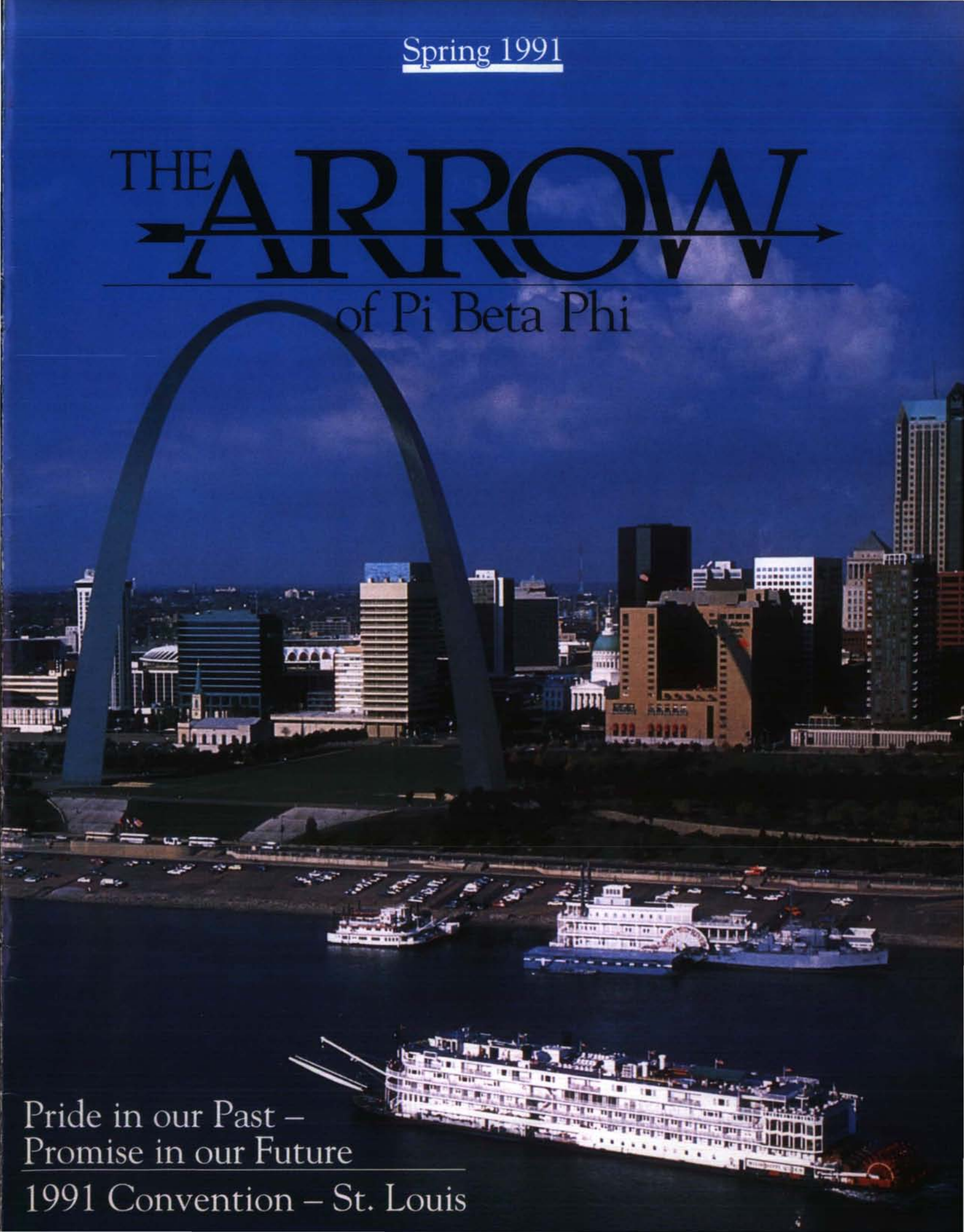


Spring 1991

THE ARROW

of Pi Beta Phi



Pride in our Past –
Promise in our Future
1991 Convention – St. Louis

Message from the Grand President



In an ever changing world, where our loftiest dreams come true, yet lingering fears become reality, isn't it comforting to know that there is an ever constant, ever supportive part of our lives - Pi Beta Phi!

Especially during the unsettling times of war and uncertainty, our minds are directed toward most important things in life - family, freedom, friendships.

How fortunate we are to live in a society where we have the freedom to associate freely, to belong to an organization which lends inspiration to our lives through our beautiful ritual, and to choose our own friends of congenial interests and aspirations!

Recently I received a note from a daughter of one of our 75-year Pi Phis who was unable to write herself. About her mother's Pi Phi affiliation she wrote, "She has, indeed, treasured her Pi Phi memories and friendships... I am very thankful that Pi Phi has been part of my mother's life."

Often in our busy lives
We somehow fail to realize
What different ways we might have gone
If Pi Phi hadn't come along.

From pledge to Golden Arrow year
Those loyal ties are always near,
So, think what your life might have been
If Pi Phi hadn't said, "Come in!"

Evelyn Peters Kyle

May cherished moments, steadfast friendships, and special ties that bind be an ever constant source of inspiration and comfort.

Let us, particularly during Pi Beta Phi's founding month, honor our Founders whose vision made our ever supportive Pi Beta Phi a reality for all of us.

Carolyn Helman Lichtenberg

Contents

Spring 1991

Volume 107 Number 3

Convention 1991-
St. Louis, Missouri is the site of the 58th Biennial Convention of Pi Beta Phi.
pg. 4



Installation-
Pi Phi welcomes Wisconsin Delta at Marquette University to the Fraternity roll.
pg. 10

Election Process-
The Fraternity's election process is explained by Nominating Committee Chairman Barbara Varner Frizell.
pg. 12



Alcohol Awareness-
Pi Beta Phi collegians participate in National Alcohol Awareness Week.
pg. 20

Award Winners-
Pi Phi highlights more of the 1989-90 award-winning chapters and clubs.
pg. 30



Profiles-
Meet Mabel Toombs Stevenson, Indiana Alpha's oldest living graduate.
pg. 44

Departments

Foundation9

Holt House14

News of Arrowmont and Arrowcraft16

Collegiate News24

Alumnae News32

In Memoriam37

Fraternity Directory39

Announcements45

Dear Editor.....47

Arrow Editor
Jennifer Moeller Barcus
Pi Beta Phi Central Office
7730 Carondelet, Suite 333
St. Louis, MO 63105
314/727-7338
FAX: 314/727-8049

Address Changes and In Memoriam
Pi Beta Phi Central Office
7730 Carondelet, Suite 333
St. Louis, MO 63105

Copy Deadlines
Spring-January 10 Fall-July 10
Summer-April 10 Winter-Oct. 10

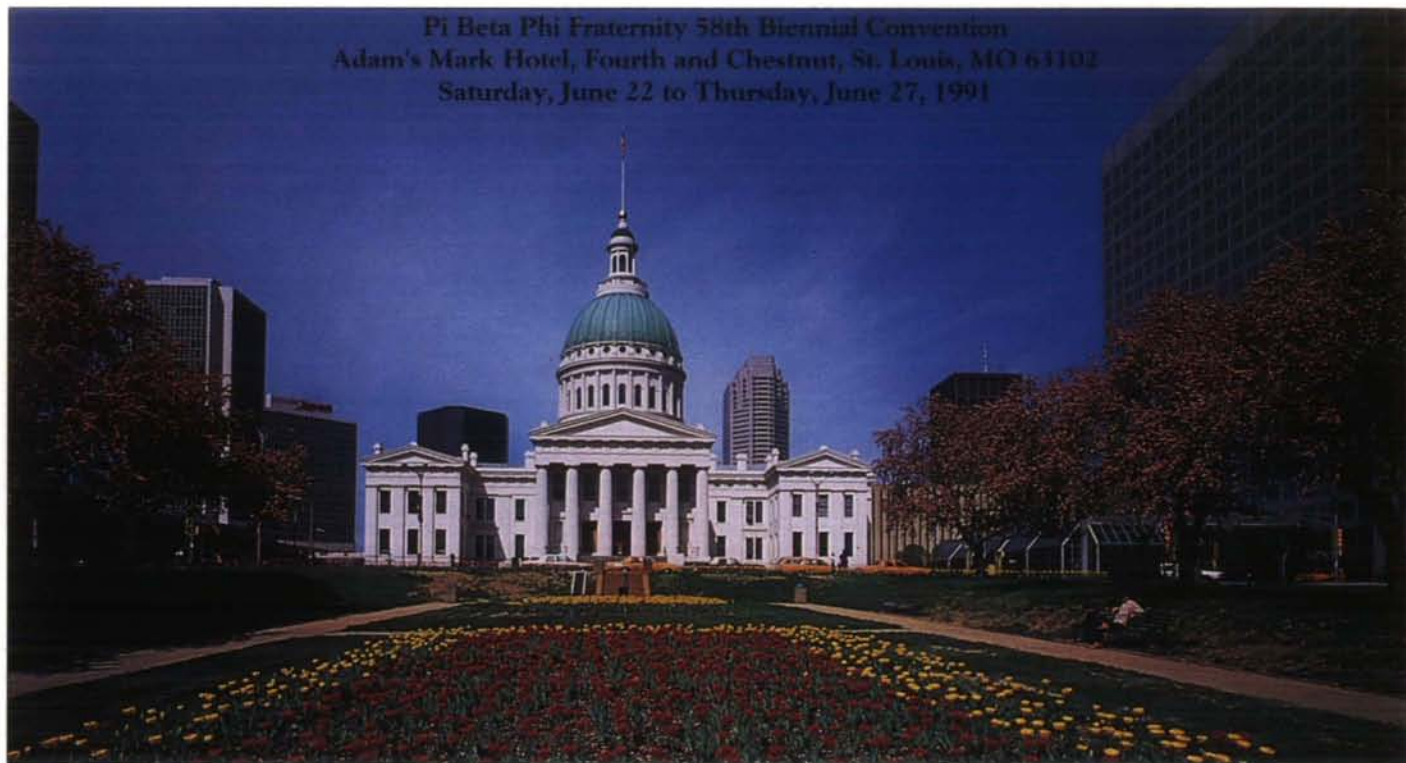
The ARROW of Pi Beta Phi (USPS 032-540) is published quarterly by Pi Beta Phi Fraternity, 7730 Carondelet, Suite 333, St. Louis, MO 63105-3328. Second class postage paid at St. Louis, MO. POSTMASTER: Send address changes to The ARROW of Pi Beta Phi, 7730 Carondelet, Suite 333, St. Louis, MO 63105-3328. Correspondence of an editorial nature is to be addressed to the editor. Correspondence of a business nature should be sent to Pi Beta Phi Central Office.

FOUNDERS OF THE FRATERNITY
Emma Brownlee Kilgore (1848-1924)
Margaret Campbell (1846-1936)
Libbie Brook Gadis (1850-1933)
Ada Bruen Grier (1848-1924)
Clara Brownlee Hutchinson (1850-1931)
Fannie Whitenack Libbey (1848-1941)
Rosa Moore (1848-1924)
Jennie Nicol, M.D. (1845-1881)
Inez Smith Soule (1846-1941)
Fannie Thompson (1848-1868)
Jennie Horne Turnhull (1846-1932)
Nancy Black Wallace (1846-1918)

Founded 1867

Convention Information

Pi Beta Phi Fraternity 58th Biennial Convention
Adam's Mark Hotel, Fourth and Chestnut, St. Louis, MO 63102
Saturday, June 22 to Thursday, June 27, 1991



Convention Registration

National and province officers and official personnel should have received registration information and forms personally in a convention mailing in February. Chapter and club voting and alternate delegates should receive their forms from their chapter or club president to whom the mailing was sent. The AAC Chairman and the House Corporation Chairman received the information and forms for their participants in the seminars. Convention **visitors must request** a Convention Registration Packet by using the form provided in this issue of *The ARROW*.

Hotel Information

Room rates are Full American Plan which includes room, room tax, meals, and 16% meal gratuity. A full day registration includes meals that begin with dinner on your arrival date and breakfast and lunch the next day. The plan does not include lunch on Tuesday, June 25, the day of Recreation Day Tours nor on Thursday, June 27,

the day following the close of convention. Room rates are:

Single-\$165.00 per day, per person
Double-\$118.00 per day, per person

For those who make reservations for the Post Convention Tour to Holt House, the Adam's Mark Hotel will honor the special **room** rates for the extra night.

Registration Fee with Hotel Accommodations

Full-time Convention
Registration Fee\$85.00
Full-time Fee
after April 15, 1991\$125.00
Part-time Convention
Registration Fee (per day)\$25.00
Part-time Fee
after April 15, 1991 (per day)\$30.00

The fees listed above apply to those who are registering in the hotel on a full-time or part-time basis.

Registration Fee without Hotel Accommodations

Daily registration fee for those attending convention on a part-time basis without hotel accommodations (per person, per day)\$25.00

No meals are included for those not registered in the hotel. The daily registration fee is required for all Pi Phis attending any portion of the convention (general sessions, workshops, etc.) A daily registration fee can be paid at the Pi Beta Phi Registration Desk during the convention week. Those attending only special events and meals are not required to pay a convention registration fee.

Individual Meal Tickets

Pi Phis who are not full-time guests at the hotel may purchase individual meal tickets at the Meal Ticket Desk in the convention registration area of the hotel. Tickets must be purchased at least **72 hours or**

3 days prior to the time of the meal. A request form for advance purchase of meal tickets will be mailed with confirmation letters to all part-time convention registrants. For those not registered in the hotel for any part of convention, meal tickets may also be purchased in advance by mail through the Registration Chairman at the Central Office address.

Breakfast: \$8.00
Lunch: \$17.00
Dinner: \$28.00
Riverboat Cruise and Dinner: \$32.00
Wine Carnation Banquet: \$36.00
Prices include tax and gratuity.

Meal times: **Breakfast**-7-8:00 a.m.
Lunch-12:00 noon
Dinner-6:30 p.m.
Banquet-8:00 p.m.

Convention Schedule of Special Events and Meals

Saturday, June 22

Opening reception, Welcome to St. Louis Dinner, Return of Awards Ceremony.

Sunday, June 23

Canadian Breakfast, Devotional and Memorial Service (White attire required), Legacy Luncheon, Model Initiation, Parade of Chapters, Dinner by Chapter.

Monday, June 24

Convention Reunion Breakfast, Panhellenic Luncheon, Convention Picture, Riverboat Cruise and Dinner.

Tuesday, June 25

Past National Officers Breakfast, Recreation Day Tours, Arrowmont and Songfest Dinner. (Pi Phi or picnic attire)

Wednesday, June 26

Honors Breakfast, Golden Arrow Luncheon, Wine Carnation Banquet (Dressy attire, long or short dress).

Transportation

Pi Beta Phi is proud to have TWA as its official carrier for the 1991 Convention. To obtain the lowest available air fare call Carlson Travel Network at the Coddington office, Santa Rosa, California. The toll free number is: **1-800-833-0834** (including California residents). Direct your call to Loretta or Coni. All Pi Beta Phi national officers and collegiate delegates who are attending convention at national fraternity expense **must** make travel arrangements through **Carlson Travel Network-Coddington**. Carlson Travel Network will confirm your reservation at the lowest available rate. If TWA does not service your city, they will confirm the best possible route and fare to St. Louis.

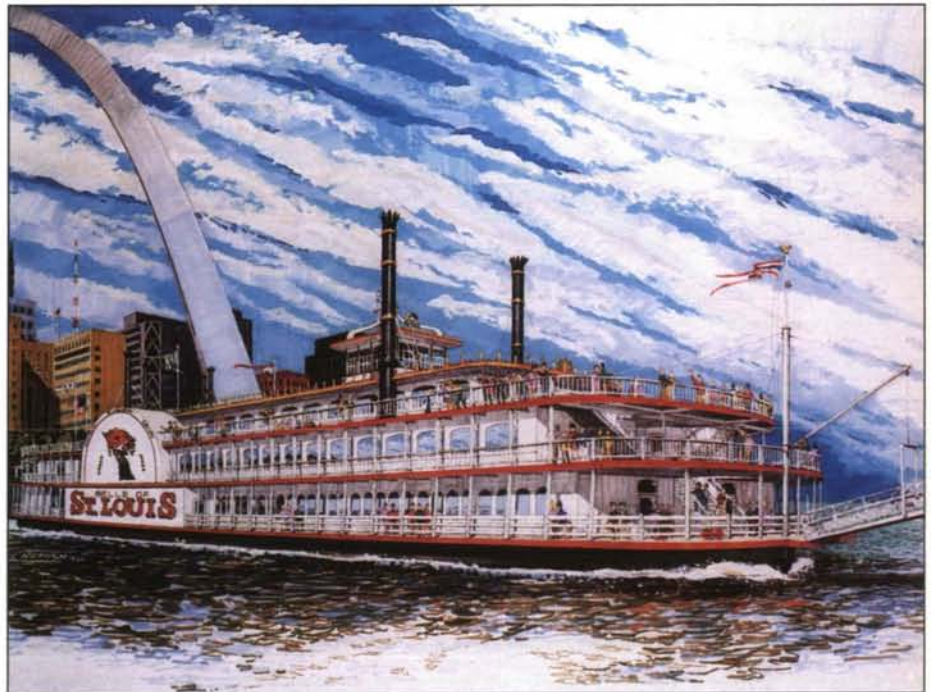
Please make your call between the hours of:

Weekdays-8:00 a.m.-6:00 p.m.
(Pacific Standard Time)

Saturdays-10:00 a.m.-5:00 p.m.
(Pacific Standard Time)

AAC/House Corporation Pre-Convention Seminar

Special registration forms and information for the seminar and convention will be mailed directly to the chairman of each Alumnae Advisory Committee and the chairman of each House Corporation. You must be an official member of an AAC or House Corporation to register. Schedule your arrival before 6:00 p.m. Friday, June 21, 1991. The seminar will conclude at 4:00 p.m. Saturday, June 22, 1991. There is a registration fee of \$30.00 for those attending the seminar.



A highlight of convention will be a Riverboat Cruise and Dinner aboard the Belle of St. Louis on Monday, June 24. Conventioneers will cruise the Mississippi River while being entertained showboat style with some special Pi Phi entertainment.

All photos courtesy of the St. Louis Convention and Visitors Commission.

Recreation Day Tours

Tuesday, June 25, 1991

Pi Beta Phi Tour

Cost \$28.00

After enjoying lunch in the cabanas of Busch's Grove, a St. Louis favorite since the 1890s, you will have the afternoon to investigate the shops of Market Place of Ladue including the Sign of the Arrow Shop, a philanthropy of Pi Beta Phi's St. Louis Alumnae Club. You will then tour Central Office and Pi Beta Phi archives. Your day will end with a tour of the History Museum and a drive through Forest Park, site of the 1904 World's Fair.



Grant's Farm Tour

Cost \$26.00

After lunch and a brief tour of one of two historic city homes, the Lemp Mansion or DeMenil House, you will spend the afternoon at Grant's Farm, the country estate of the late August A. Busch. The property was originally owned by Ulysses S. Grant, the 18th President of the United States. A trackless train will take you through the beautiful grounds and game preserve. You will see the trophy room, stables and Mr. Busch's antique carriage collection at the Bauertshof, as well as Grant's Cabin and the world famous Clydesdales.

Missouri Botanical Garden

Cost \$25.00

Relax with a picnic in the park and a walk through the gardens . . . your picnic lunch will be catered in one of the ornate gazebos of Tower Grove Park, the finest example of a

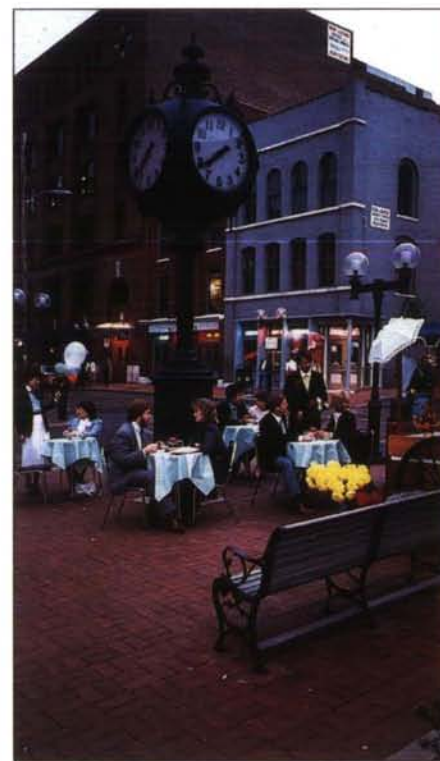
Victorian Park in the United States. You will then begin a walking tour of the Missouri Botanical Garden which was modeled after the Kew Gardens in England. The garden is known for its wide variety of floral and woodland gardens including the Climatron, a mammoth geodesic domed greenhouse and seiwa-en, the country's largest Japanese Garden.



St. Louis City —Old & New

Cost \$27.00

You will begin your delightful introduction to St. Louis on the historic riverfront where St. Louis had its beginning. After traveling the cobblestone streets of Laclede's Landing, you will see and hear how Eads Bridge, the Gateway Arch, the Old Courthouse and many other prominent St. Louis landmarks all contributed to the history of St. Louis. Following lunch at the St. Louis Woman's Club, you will tour Pi Beta Phi Central Office, and the magnificent St. Louis Cathedral with the largest collection of mosaics in the western world. Your day will end with a visit to the History Museum in Forest Park for a specially planned guided tour.



Please note—Lunch will not be served at the hotel on Recreation Day. Tours depart the hotel at 12:30 and return by 5:00 p.m. Tours are limited in the numbers they can accommodate. Casual clothing and comfortable shoes are recommended. (No shorts on the St. Louis City Tour, please)

Post-Convention Tour

Holt House

Thursday,
June 27, 1991
8:00 a.m.—
9:30 p.m.

Cost \$68.00

On the Post-Convention Tour, you will travel to Holt House in Monmouth, Illinois. You will have the opportunity to learn of your heritage while visiting the room where Pi Beta Phi Fraternity was founded. Holt House has been beautifully restored and serves as a meeting place for Pi Beta Phi and community groups, serving the dual purpose of memorial to our founders and an integral part of the college and community life.

After lunch at Monmouth College, you will have the afternoon to walk about Monmouth at leisure. In addition to a guided tour of Holt House, you can visit the Pi Beta Phi



Marshall Hall on the Monmouth College campus.

lounge dedicated to Amy Burnham Onken in Hewes Library, the chapel where the founders wore arrows in their hair, the Illinois Alpha chapter

room at Marshall Hall, and the cemetery where five of the founders are buried.

A trip to Monmouth will be by air-conditioned motorcoach by way of the Mississippi River. Tour guides will describe the history of the area and you will visit Hannibal, Missouri, the boyhood home of Mark Twain. You will then travel along the scenic Great River Road for a glimpse of an early Mormon settlement in Nauvoo, Illinois.

The Post-Convention Tour will depart from the Adam's Mark at 8:00 a.m. The hotel will be serving a continental breakfast prior to departure time. In addition to the luncheon in Monmouth, refreshments will be provided in the morning, and supper will be served en route to St. Louis. Arrangements have been made with the Adam's Mark for an additional night at the convention rate. Casual dress and comfortable shoes are recommended.

Please send me a Visitor Registration Packet

The 58th Biennial Pi Beta Phi Convention
The Adam's Mark Hotel
St. Louis, Missouri
June 22-27, 1991

Requests for registration packets cannot be honored after **April 5, 1991**. The official registration form and deposit must be returned to Pi Beta Phi Central Office by **April 15, 1991**.

Name: _____

Address: _____

City: _____ State: _____ Zip: _____

Chapter: _____

Please include your mailing label from The ARROW for identification purposes. This is not a change of address form.

Mail to: **Pi Beta Phi Convention**
Pi Beta Phi Central Office
7730 Carondelet, Suite 333
St. Louis, MO 63105

Only **visitors** need to send for registration packets.

Pi Beta Phi Foundation



Anne Travis O'Connell of the St. Louis Club presents Ann Dudgeon Phy with a check for the Pi Beta Phi Foundation.

St. Louis Alumnae Club Sets the Pace

The St. Louis Alumnae Club has distinguished itself by becoming a Leadership Club with a pledge of \$80,000 to the Pi Beta Phi Foundation. The pledge has been designated for capital improvements at Arrowmont as a part of "Blueprint for the Future," and the initial payment was presented to the Foundation in October 1990. As a significant donor, St. Louis will have the opportunity to select a facility or program to bear the club name.

It is most appropriate that the St. Louis Club has taken this leadership initiative because the club has a history of strong support for Arrowmont. In addition to this special gift made through the Foundation for capital improvements, funds from the operation of Sign of the Arrow, the alumnae club's needlepoint and gift shop, have made possible substantial donations to the school in the past. Reflecting the Fraternity's commitment to quality and excellence, Arrowmont is presently acknowledged as one of the top five arts and crafts schools in the country.

The Pi Beta Phi Foundation is deeply grateful for the example set by the St. Louis Alumnae Club through its generous leadership gift. Donations such as this one provide building blocks for the future.

A Historical Perspective on Foundations

With the establishment of the Pi Beta Phi Foundation as an official part of the Fraternity family, Pi Phi adds another chapter to the history of foundations formed by Greek-letter organizations. These charitable foundations evolved from the call to serve both fraternity members and the broader world. Service for members has been, in most instances, scholarships, leadership training, and special assistance for both collegians and alumnae. Beyond fraternity boundaries, Greek organizations have chosen to support a broad spectrum of charities. Pi Phi is unique in having established and supported its own philanthropy for over 75 years.

The foundations which now play a prominent role in fraternity life are not as old as the fraternity movement itself, but their beginnings are older than you might think. One of the men's fraternities established a private foundation in 1912, the same year that Pi Phi started the Settlement School. That private foundation matured into a full-fledged "public" foundation which now supports a variety of educational programs while the spirit of the Settlement School has evolved into the internationally acclaimed Arrowmont, a sophisticated arts and crafts school dedicated to "enriching lives through art."

There was little emphasis by fraternities and sororities on establishing foundations until after World War II when changes in tax laws became a prime motivating factor. Fraternities, prior to the time, had been viewed by the IRS as non-profit social clubs with no tax benefits available to those who made contributions to them. By the 1950s, it was recognized that all

fraternities and sororities were engaged in activities of an educational nature that could qualify for tax exempt status, if separated completely from the fraternity. An example is the Leadership School of Sigma Alpha Epsilon. Founded in 1935, and funded as a fraternity activity, this project eventually came to be supported by the SAE Foundation.

In the Greek world, the responsibility for funding educational and leadership programs has shifted from fraternities to their foundations. Traditionally, the men's fraternities pursued this method of funding for their programs more vigorously than the women's groups. While there are a number of NPC groups who have had foundations for many years, it is only in the last decade that women's fraternities have taken real advantage of this opportunity to support eligible programming with tax exempt dollars.

Financial stability has always been a strength of Pi Beta Phi. Our new Pi Beta Phi Foundation is an important milestone in the Fraternity's history, one that will make it more advantageous for Pi Phis to support the programs important to the life of our Fraternity and to the lives of our members. The Foundation will provide additional financial strength as we seek to address the needs of the future. Fundraising efforts will shift and, as the base of the Foundation is built, a shift in funding will take place as well. Our status as a "public charity" will invite broader alumnae support of our educational, leadership and charitable programs. Pi Phi is proud to be among the Greek organizations who have established charitable foundations.



Foundation Board members. Front row: Carolyn Helman Lichtenberg, Ann Dudgeon Phy, Adrienne Hiscox Mitchell. Back: Carol Inge Warren and Mary Ann Behlen Hruska.

Nevada Alpha celebrates 75 years at University of Nevada

Seventy five years ago on November 15, 1915, after a formal petition to the national organization, twenty eight young women who at that time called themselves Delta Rho, pledged themselves to the bonds of the wine and silver blue.

According to chapter records, petitioning to become the Nevada Alpha Chapter, actually began in 1900. There were 11 women, eight were students and three were graduate students. They bonded together and formed the group Delta Rho.

The group prepared formal petitions, bound in white leather and lettered in gold, consisting of all the information necessary. There were statements as to the state and condition of the University, photographs of the campus and buildings, and photographs of the petitioners. There were also letters of



Jeannine Funk, General Chairman, displaying Arrowcraft items to be sold.

endorsement from prestigious members of the community.

Finally, all of the hard work paid off. On November 12, 1915, Pi Phi's Grand Vice President announced the granting of the charter.

Installation of the chapter began immediately. Pledging took place that night and 28 women received their first Pi Phi lessons in ritual and procedure. A few days later the young women put on the golden arrow and the Nevada Alpha Chapter was a reality!

It is now November 2, 1990. As I sit in the chapter house the phone is ringing off the hook with women calling to see what time house tours begin and with actives trying to find out what time they are supposed to be ready. At 3 p.m. Nevada Alpha members of past and present soon begin to arrive with their families.

The active chapter was in awe. There were more than 400 members of Nevada Alpha gathering in Reno that day to reminisce about college days and share tales from the seventy-five years of history.

The months of planning were hectic. In the days prior to the celebration, the alumnae and actives were going crazy with cleaning, cooking, and setting up. All of the new faces and all of the new information I was learning made me feel as though I was going through rush again. I was informed by alumnae that the third floor, which now sleeps 12 members, used to be where active meetings were held. There was once a fire on the second floor and the



Nevada Alpha Chapter President Lauralyn McCarthy with Grand President Carolyn Helman Lichtenberg and Nevada Alpha alumna Jill Honson.

basement used to be a garage!

It's now Saturday, November 3. There's a picnic before the kick off of the University of Nevada Wolfpack football team. Pi Phi sweatshirts can be seen all over campus.

After the game Pi Phis were rushing around trying to get ready for the banquet and dance. The banquet was a very festive occasion. Grand President Carolyn Helman Lichtenberg gave a very touching speech. The Nevada Alpha Pi Phis devoted full attention, being careful not to miss a word. Following Mrs. Lichtenberg's speech there was a slide show. There were pictures from the 1920s through 1990. We all watched our chapter's history unfold before our eyes. So many things are different. So many things are still the same. Only the names have changed. It's a strange, but content feeling.

by Kelly Ann Riordan

Installation

128th Chapter Installed at Marquette University

They are a group of very dedicated and loyal women. And to their credit, they are also very persistent.

In early October of 1988, Kappa Xi Kappa, a local sorority at Marquette University was formed. From the beginning they sought national affiliation. The group wrote their constitution, outlining their standards and philosophies, and was officially recognized as a social sorority by Marquette on November 3, 1988.

They planned rush parties and continued to grow in number. By the fall of 1989 the group had grown to 50 members. Two NPC groups made presentations to Kappa Xi Kappa, but they wanted to be members of another women's fraternity, Pi Beta Phi.

By this time, Pi Phi's Grand Vice President of Membership Carolyn Pavletich Lesh had a growing file of

letters and information from the group at Marquette. Their persistence and perseverance was being noted by the national Fraternity. In spite of its full expansion schedule, the national Fraternity grew more curious about the group and Pi Beta Phi sent the Milwaukee Alumnae Club President and two others from the club to meet with the members of Kappa Xi Kappa. The women were very impressed with the chapter. The chapter was quite shrewd in their next step. One of the Pi Phi alumnae who met the chapter, Debbie Reitz, was teaching at Marquette. Kappa Xi Kappa asked Debbie to be their academic advisor, making the first tangible connection between the two groups.

In March of 1990, Pi Beta Phi sent a national extension team to Milwaukee to present to Kappa Xi

Kappa. At last the group's dream was a reality. Pi Beta Phi pledged the women of Kappa Xi Kappa just three weeks before the end of the academic term and the Wisconsin Delta Colony of Pi Beta Phi was formed.

Traveling Graduate Consultants were pulled from the road to assist Pi Phi's newest chapter and to prepare the group for formal rush in the fall. The Pi Phis at Marquette participated in and were quite successful with their first formal rush. The group now had a colony, or charter pledge class, and a fall '90 pledge class. Both pledge classes experienced a busy fall semester. Early in the semester a retreat was held for the groups at a local "dude ranch."

Charter members of Wisconsin Delta celebrate at the Installation Banquet.





Local Installation Committee.
Front: Mary Beth Brown Quinn, Debbie Anderson Reitz, Kate Gilbert Phifer, Lynn Hudy, Kris Karnsnicky Rozran, Virginia Wachob Shine, Eileen O-Neil Grigutis. Back: Pat Hunt James, Pat Doelle Bennett, Renee Hipp, Katie Godding Sonnenberg and Megan Murphy Shane, General Chairman.

All enjoyed horseback riding and hayrides while learning more about one another and Pi Phi. During the annual Marquette Homecoming Parade, Pi Beta Phi won the parade competition. The group also participated in philanthropic work. Members became involved in a project through the local YMCA called Tumblebugs. One volunteer a week would go to the YMCA and teach children from ages 3-7 songs, games and tumbling exercises.

But far outshining all other events of the fall was the installation weekend of Wisconsin Delta, held the weekend of November 10. After the reading of the Constitution and Preparatory Service, Pi Phi pledges, alumnae and national officers took part in a traditional Pi Phi Cookie Shine. All events were held Friday evening in the First Unitarian Church.

One could see the surprise on the faces of the charter members as they gazed at a room filled with treats and decorations and experienced their very first Cookie Shine. Several of the charter members likened the sight of this new event to that of Willie Wonka's Chocolate Factory. The Cookie Shine sheet, made by alumnae, was outlined with satin wine-colored ribbon and contained a nine foot calico arrow in the center. The sheet was decorated with sweets by Traveling Graduate Consultants Lisa Gregg and Shannon Strain and Resident Graduate Consultant Missy Smith.

Gayla Velvin Ferree, Director of Rush and Supervising Officer read the history of the Cookie Shine and the

members of Wisconsin Delta's Alumnae Advisory Committee performed the Seven Gifts Ceremony. Charter members returned their pledge pins and perused the gifts and goodies left at their place setting— an angel picture frame, angel pin, "An 'If' for Pi Phi," and the Seven Gifts card. The remainder of the night was filled with songs and laughter.

Initiation was held at the church the following day. Grand President Carolyn Helman Lichtenberg was assisted by Grand Treasurer Carol Inge Warren and Grand Vice President of Membership Carolyn Pavletich Lesh. Forty-two women were initiated.

The Installation Banquet was held in the Regency Ballroom of the Marc Plaza Hotel. The room was very elegant and formal with the tables covered with wine tablecloths. Pink and white lilies accented with roses and gold angel garland graced the tables as centerpieces. Barbara Damm of the Milwaukee Alumnae Club served as toastmistress for the evening. After dinner special guests and initiates were introduced to all in attendance. Then everyone was entertained by the Wisconsin Delta rush skit, The Big Chill. Gifts were presented and the installation ceremony was performed by Carolyn Lichtenberg. Following a candlelighting ceremony and loving cup ceremony, the evening closed with a slide presentation recapping the fall activities of Wisconsin Delta.

A reception was held at the Marc Plaza on Sunday for the charter members. Pledges from the 90 fall class

as well as many students from Marquette, faculty, and administration joined the Pi Phi alumnae and initiates of Wisconsin Delta in celebration. Alpha Phi brought the Pi Phi a dozen wine carnations and Alpha Chi Omega a silver serving tray engraved with the event and date. The local chapter of Alpha Xi Delta was being installed the same weekend. Every fraternity on campus gave wooden plaques with brass plates to the chapter.

During the installation weekend, Wisconsin Delta received many gifts. Among them were a silver tray given by Grand Council; a silver loving cup, given by Omicron collegiate province chapters; Cookie Shine sheet, made by Ruth Anne Koch Hall, Virginia Wachob Shine, Laura Deimel and Megan Shane; candelabra donated by Madison and Milwaukee Alumnae Clubs; crystal punch bowl given by the Milwaukee Alumnae Club; silver candlesticks and pitcher a gift of the Wisconsin Delta AAC, House Corporation and Milwaukee Alumnae Club Executive Board.

Marquette University, an independent institution of higher learning, opened in 1881. The university is named for Per Jacques Marquette, a renowned Jesuit explorer. Father Marquette and Louis Joliet, along with five companions, were the first Europeans to explore the Mississippi River. The approximate enrollment of undergraduate students is 8,500 and graduate level is 3,500. The percentage of Greek students is 9%. Pi Phi joined three other sororities on campus including Alpha Chi Omega, Alpha Phi and Alpha Xi Delta.

The Election Process of $\pi\beta\phi$

by Barbara Varner Frizell

Alumnae and active members of Pi Beta Phi will be meeting in St. Louis in June, 1991 for the 58th Biennial Convention. One of the most important business considerations of this convention will be the nomination and election of Grand Council and Directors for the 1991-1993 biennium. It will be the responsibility of the



**Nominating Committee
Chairman Barbara Varner Frizell**

Nominating Committee to present to the convention delegates, the names slated for nomination to Grand Council and to the elected Director positions.

In any organization, the members should be well informed about the procedures and policies followed. It is the intent of this article to review the purpose, composition and function of the Nominating Committee so the slating and election process may be better understood.

The purpose of the Nominating Committee's work is to strive to

nominate capable and dedicated Pi Phis who will best serve the interests of Pi Beta Phi now and in the future. The Committee considers the requirements of the positions and the qualifications and talents of those available to serve.

In a convention year, the Nominating Committee is composed of three alumnae members and three



Anne Chestnut Bartlett is serving her second term on the Nominating Committee.

collegiate members. Alumnae members are chosen for their experience as former national or province officers or committee chairmen with attendance at at least two conventions. They are from different geographical areas, serving staggered six year terms, one alumna member being appointed by Grand Council after each convention. The senior member in tenure is the chairman of the committee. The three active members are selected from the membership of the previous year's Balfour Cup, Stoolman Vase and Philadelphia Bowl recipient chapters

by members of those chapters.

Each one of the alumnae members of the Nominating Committee maintains files of certain provinces. These files contain information about persons recommended as potential officers. Recommendations are always welcome and can be sent to the Nominating Committee.



Jane Houchens Tuten was appointed to the Nominating Committee in 1989.

In the spring before convention, the Nominating Committee distributes officer recommendation forms to chapters, clubs, Grand Council, Directors and Province Officers asking for recommendations for Grand Council and Director positions. It is of vital importance that these Recommendation Forms be completed and be returned to the Committee, as this gives everyone a chance to be heard and the Committee valuable input. This confidential information is carefully compiled and made available to all six members of the Committee.

The Nominating Committee makes a very sincere effort to weigh all the information carefully, impartially, thoughtfully and with great deliberation in order to do the best job possible in slating national officers.

The actual slating process begins when all six members of the Nominating Committee arrive at the convention site a few days prior to the opening of the convention. At this time they are briefed by the National Parliamentarian as to proper procedures. The Committee members review in detail the information from the officers' recommendation forms and other sources. They also hold conferences with officers, committee chairmen and other convention personnel who have arrived early. Since time is limited, this pre-convention format gives the Committee the opportunity to meet with convention delegates, alternates and visitors when they arrive. The Nominating Committee encourages convention conference appointments, as visitor and delegate thoughts and comments are very important to the nominating process and are vital to the future of Pi Beta Phi. Please be assured that the Nominating Committee operates in an atmosphere of strict confidentiality.

It is important to remember that as the Pi Beta Phi Constitution and Statutes state, "Members of Grand Council, Directors and province officers shall be elected for a term of two years." For an officer to continue beyond two years, she must be recommended to the Nominating Committee, placed on the slate by that Committee and elected by ballot. There is no automatic continuation, succession or ascension regarding Pi Beta Phi elected positions.

"Pi Beta Phi has always had strong leadership from its officers and the Nominating Committee will endeavor to see that this tradition of excellence is maintained."

The Future of Our Fraternity Lies in the Wisdom of its Leaders

In the fall of 1989, Grand Council appointed a four-member committee to conduct a comprehensive and in-depth research, review and evaluation of current and previous Pi Beta Phi Fraternity national nominating and election procedures. Sheila Consaul, then Delta Collegiate Province President, now Director of Pledge Development, was selected chairman of the committee. Committee members included Adrienne Mitchell, current Grand Vice President of Philanthropies and past Grand Vice President of Collegians; Ann Phy, former Chairman of the National Nominating Committee, and past Grand Secretary; and Stacy Kamas George, former collegiate member of the National Nominating Committee and a past Traveling Graduate Consultant.

In order to collect information regarding members' opinions about the nominating and election procedures of the Fraternity, the committee elected to survey a number of different constituencies. Two surveys were developed and approved. The first survey was directed just to Pi Phis. The committee decided that the following Pi Phi should be surveyed, as it felt that these women would have the greatest knowledge of and most experience with the nominating and election process: national and province officers and nominating committee members who served the Fraternity during the past ten years; all past Grand Presidents; Alumnae Club Presidents of clubs that sent delegates to at least one of the past five Conventions; all current Chapter Presidents; and Graduate Consultants for the past five years. This totaled almost 600 survey recipients.

The second survey was sent to a variety of "other groups" to gather information on the election and nominating processes of large national organizations. In addition to sending the survey to all the National Panhellenic Conference members, the committee sent surveys to selected professional and civic associations. Approximately 40 of these surveys were mailed.

The committee was extremely pleased that 52 percent of the Pi Phi surveys were returned and that 62 percent of the "other groups" completed

surveys were received. This very high return rate also showed that there was a tremendous interest in the committee's work and that the undertaking was clearly justified.

Each of the four N.E.P. committee members read thoroughly and tabulated one quarter of the returned Pi Phi surveys. The completed "other groups" surveys were retained for interest and reference purposes. After completing the individual assessments of the surveys, the committee met in Dallas to compile the results and sketch out the report and recommendations. Committee members agreed that the overwhelming view of the Pi Phi surveyed was, "The current system works well and should not be significantly changed. Therefore, the committee did not recommend that any legislative changes to our current system of nominating and election procedures be made."

Having reached that conclusion, the committee agreed that there were some recommendations that could be made based on the survey results to fine tune our system and make it even better. These recommendations will be described more fully in the Nominating and Election Procedures Review Committee report to the Convention in St. Louis, however, below are the main areas the committee addressed:

➤ More Education — both to alumnae and collegians through Pi Phi's main communication tool, The ARROW, as well as via workshops and seminars.

➤ Greater Discussion of the Makeup of the Nominating Committee and its Function — Many of the Pi Phis surveyed were unclear as to how the members of the Nominating Committee were chosen and its exact role.

➤ Changes in the Collection of Information on Potential Candidates for Office — including a revamped Alumna Information Sheet and changes in the candidates' interview process.

➤ Revisions to the Procedure of the Announcement of Candidates at Convention — including changes in the announcement of the slate of officers and presentation of biographical information.

by Sheila Consaul

Founders' Figurines Displayed at Holt House

by Elizabeth Davenport Garrels

As a child, probably each one of our twelve Founders enjoyed playing with a doll. Perhaps the doll was made of corn husk, rags, of Grandpa's sock with yarn hair. Maybe as older girls, the Founders fancied Victorian ladies with china heads, arms, and legs. However, I'm sure none of the twelve would have envisioned themselves as doll figurines in images of wax dressed in period costumes. Yet that is exactly how our beloved Founders are immortalized in an unusual display of historical accuracy and nostalgia at Holt House.

From *A Century of Friendship of Pi Beta Phi 1867-1967*, pages 258-9: "The figurines themselves were the gift of the Jacksonville, Illinois Alumnae Club. Mimi Schultz, of Chicago, was commissioned to mold them. Each makes a Founder live again in appearance and personality. A great deal of biographical material was studied. Information was obtained as to height, stature, coloring and personal characteristics. And then, Mrs. C.B. Powell of Jacksonville dressed the figurines with faithful and loving attention to details. Mrs. Powell's daughter, Jeanette, became so interested in the project that she sent letters all over the United States, to the sons and daughters, the nieces and nephews, and the intimate friends of the Founders, in order to gain all possible information about them. She made a special trip to Monmouth where she copied collections of old letters, college records, and newspaper files. Her research added a wealth of material to the national archives of the Fraternity."

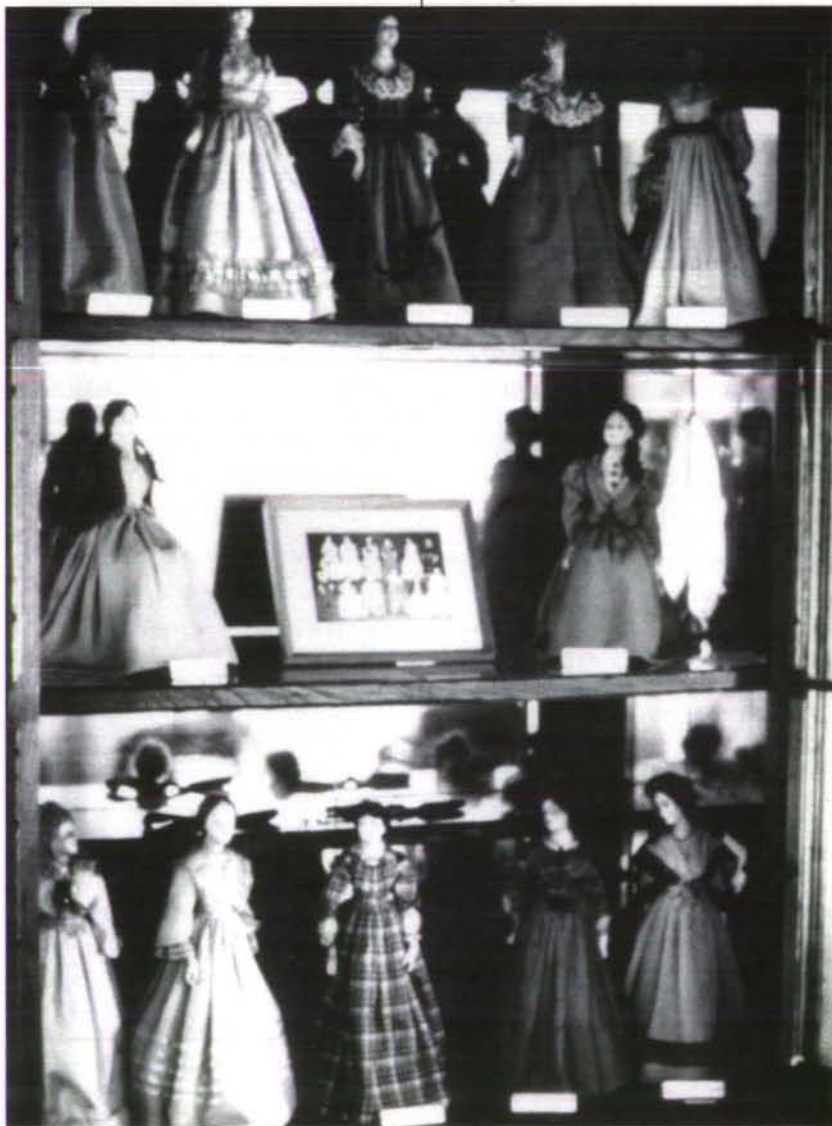
The treasured dolls, on display since the 1940s, are shown in a large walnut cupboard in the Historical Room (across the upstairs hall from Libby and Ada's southwest bedroom).

This unique cupboard was a gift from the Mt. Pleasant, Iowa Alumnae Club, which has never forgotten Iowa Wesleyan University's debt to Libby Brook Gaddis for establishing Iowa Alpha, now the oldest chapter of the Fraternity in continuous existence.

This impressive wax figurine

collection is just one of the many informative exhibits to be seen highlighting our founding at the site of our birthplace, Holt House, Monmouth, Illinois.

The Holt House Committee cordially invites you to join us there following Convention 1991.



Collegiate and Alumnae Province Presidents Not Featured in Winter AROW



Rochelle Calinson
Eta CPP



Marilyn Taylor Perry
Alpha APP



**Mary Lu Pendergrast
Meixell** Beta APP



**Susan Schlatter
Cheshire** Zeta APP



Janice Kincaid Clifford
Iota CPP



**Nancy Fawn Wilkerson
Diehl** Kappa APP



Elizabeth Davis Vance
Xi APP



Margaret Bain Northrop
Alpha-Gamma APP

Collegiate Panhellenic Presidents

1990-91

- University of Alberta (Alberta Alpha) - Terri Wynn
- University of Arkansas at Little Rock (Arkansas Beta) - Deandra Tate
- Knox College (Illinois Beta-Delta) - Rebekah Wiest
- Bradley University (Illinois Theta) - Katie Sullivan
- Simpson College (Iowa Beta) - Joey Schaefer
- Hillsdale College (Michigan Alpha) - Laura A. Stearnes
- Colgate University (New York Zeta) - Melanie Vigil
- University of Toledo (Ohio Epsilon) - Marcena Hehto
- Miami University (Ohio Zeta) - Laurie Priboth
- Bucknell University (Pennsylvania Beta) - Samantha Gladish
- Lafayette College (Pennsylvania Eta) - Jocelyn A. Davies
- University of Vermont (Vermont Beta) - Elan Chambers

ARROWCRAFT and ARROWMONT

Articles and photographs in this department by Cynthia Huff.

Pi Phi Arts Weekend to be Held in May

"I thought there would be more Pi Phis here," said one Pi Phi collegian taking an Arrowmont summer workshop for the first time. "I thought it would be more like a retreat for Pi Phis," she added. Well, why not special workshops for Pi Phis?

Arrowmont School of Arts and Crafts in Gatlinburg, Tennessee invites all Pi Phi actives and alumnae to attend an exclusive weekend art workshop May 2-4, 1991. The special weekend is open to Pi Phis only and consists of seven classes taught by some of the school's most popular visiting instructors.

If you've secretly considered taking a class at Arrowmont but put it off for lack of time or initiative, here's your chance to test the waters, to see your national philanthropy in action, and to share your experience with good friends.

Course offerings for Pi Phi Arts

Weekend are "Rib Basketry" taught by Jennifer Dyer, Knoxville, TN; "Watercolor" led by Marcia Goldenstein, Knoxville, TN; "Resist and Dyeing" taught by Ed Lambert, Athens, GA; "Jewelry" with David Logan, Johnson City, TN; "Black and White Photography" taught by John May, Sevierville, TN; "Calligraphy" led by Joyce Teta, Winston-Salem, NC; "Creative Bookbinding" taught by Chris Yarborough, Winston-Salem, NC.

Tuition for a workshop is \$100 with room and board packages starting at \$77. Tuition covers the cost of the hands-on studio experience as well as



Pi Phi Mary Kathryn Olmstead paints silk fabric in a popular class taught by Ed Lambert. Lambert will teach a similar course at Arrowmont during Pi Phi Arts Weekend May 2-4, 1991.



Texas Eta Ann Willer begins a project in a 1988 jewelry class at Arrowmont. A jewelry class taught by David Logan is one of seven workshops scheduled during the Pi Phi Arts Weekend,

the use of the basic tools and materials supplied in the studios. Room and board covers the cost of a three night stay on campus and seven meals in the Staff House dining room.

The courses are two days in length and will be supplemented by evening programs followed by independent studio time. Each course is designed primarily for students at beginning to intermediate ability levels. All classes are limited in size, therefore early registration is recommended.

To help you decide if you are really cut out for an Arrowmont workshop, the staff has compiled a list of student requirements. An Arrowmont student should be willing to:

- * Get away from it all.
- * Make new friends.
- * Try new things.
- * Give up cooking.
- * Relinquish dishwashing.
- * Converse over delicious meals.
- * Escape television and ringing phones.
- * Dress down.
- * Wear sneakers.
- * Ask directions to wildflower trails.
- * Enjoy scenic mountain views.

If you can do any of the above, you have sufficient talent to enroll and help make Pi Phi Arts Weekend a success! Pi Phis may request an informative application brochure by calling Arrowmont School at (615)436-5860. Reservations may also be made over the phone with a Visa or Mastercard.

Korean Students Spend Three Weeks at Arrowmont

In 1988 Korean ceramist Gil Hong Han came to Arrowmont with a friend for just an ordinary afternoon visit. The school so inspired Mr. Han that he hatched some ideas and started an exciting chain of events.

Mr. Han was in East Tennessee as a visiting artist in the University of Tennessee, Knoxville's ceramics department. It was former UT ceramics student, Eun Sook Kim of Oak Ridge, Tennessee who drove Mr. Han 40 miles south of Knoxville to visit Arrowmont. He was so impressed by what he saw during the high energy summer session, that he returned the following day, and then again for a third day. He conducted interviews of staff members with Eun Sook translating, and perhaps his biggest surprise came when he learned that Arrowmont was founded and is owned by a women's organization. "Smiling, he commented in English, "Women's Lib!"

Before saying goodbye to everyone at Arrowmont, Mr. Han took numerous snapshots and explained through Eun Sook that they were for an article he planned to write for a Korean magazine.

Months came and went and in 1989 a complimentary copy of Korean Craft magazine arrived with the

promised article about Arrowmont. Sprinkled throughout the Korean characters are the words TENNESSEE, SUMMER SCHOOL, ARROWMONT SCHOOL, and GREAT SMOKY.

Mr. Han continued working behind the scenes and by the spring of 1990, eight students from Seoul National Industrial University were enrolled in two summer jewelry classes at Arrowmont. Eun Sook visited the students while they were on campus, and since only one of them and their chaperone spoke English, Eun Sook cheerfully agreed to be interviewed on their behalf.

"I think they think Arrowmont is wonderful because there is nothing else except the studio work and nice surroundings." She explained that other Korean students were studying at summer schools in urban areas of the United States, but the students at Arrowmont like where they are. "They are glad they didn't go to cities," she said. The cities are full of distractions and Arrowmont's location is conducive to working. "That is why they like it very much here," she added.

Summer school courses are not available in Korea, and Eun Sook, who has lived in America for many years, compared the educational systems of both countries. "There are over 90 colleges in Seoul, alone. Once you graduate from the main schools, your future is almost guaranteed. They really over emphasize education," she said. Did the atmosphere at Arrowmont seem very relaxed in comparison? "Very much so," concluded Eun Sook, "It's a vacation for them."



Jeweler Susan Hamlet, left, in a wrap-up session on jewelry connections and mechanisms. Eight of Susan's students traveled from Seoul, Korea, where they are enrolled in Seoul National Industrial University's Department of Art Metal.



As the Arrowcraft Shop's first weaving designer, Winogene Redding will figure prominently in Philis Alvic's history of Pi Beta Phi's early cottage weaving industry in Gatlinburg.

Philis Alvic to Write History of early Weaving at Arrowcraft

In the last 65 years, Arrowcraft weavings have been exhibited in places as prestigious as Washington's Smithsonian Institute. Articles about Arrowcraft weavers have appeared in numerous magazines and newspapers, and photographs of the Shop's earliest weavers still can be found in a well-stocked bookstore.

Despite this quiet but steady stream of attention since Arrowcraft began, the history of Pi Beta Phi's cottage weaving industry has never been chronicled. It is fitting then, that Philis Alvic, a weaver and writer from Murray, Kentucky, should tackle the subject in 1991, the year marking Arrowcraft's 65th anniversary.

The idea for the project came about after Philis wrote *Mary Hambidge Weaver of Rabun*, a history of Mary Hambidge and her Hambidge Center for Creative Arts and Sciences in Rabun Gap, Georgia. Philis went on to submit a proposal to the Tennessee Humanities Council and has been awarded a grant to live on the Arrowmont campus for 4 weeks in May and June. She'll spend her time doing research by going through old records, articles, photographs, and recorded interviews. She will also spend time talking with several of Arrowcraft's older weavers who continue to work in their homes around Gatlinburg.

In a telephone conversation last January, Philis said she is excited about the project. Her history of early weaving at Arrowcraft will be available in a small, illustrated booklet and a slide or tape presentation.

American Association of Woodturners Convene at Arrowmont

Never have there been so many video and still cameras on the Arrowmont School campus as were seen recently at a national gathering of the American Association of Woodturners. The association chose Arrowmont as the nostalgic site for its 4th annual national symposium October 24-27, 1990.

Formed at Arrowmont in 1985, the AAW has attracted so many enthusiastic members that the Gatlinburg conference filled to capacity in July, long before the first of three registration deadlines. More than a year before the conference, woodturners were calling to register, explaining that they wanted to get in on the ground floor. Office Manager

Nancie Matthews handled conference registration last summer and eventually had the uncomfortable job of telling hopeful conferees that the symposium was filled. She remembers one gentleman in particular who called to register over the phone. "When I told him I'd have to put him on a waiting list, he cried, got very emotional, and couldn't speak for a few seconds. It seemed like forever," Nancie said. He eventually added that it was the biggest disappointment of his life.

The approximately 300 men and women who were able to attend the symposium were treated to dozens of demonstrations on subjects such as multiple axis turning, working with wet woods, turning natural edge bowls, bracelets, unusual materials, chatterwork vessels, and photographing one's work. The symposium attracted both amateur and professional turners from across the United States, Canada, England and New Zealand. Collectors, dealers, and other woodturning enthusiasts were on hand, as well as trade show participants selling exotic woods or demonstrating the latest in

woodturning tools and equipment.

Popular events included "Woodturning: Vision and Concept II", a national juried exhibition on view in Arrowmont's gallery. Artwork brought in by conferees was critiqued by several of America's best known turners during an entertaining discussion in an informal "instant gallery" setting.

A highlight of the symposium, and the event which most captured the attention of national magazines and local newspapers, was the installation of a double totem pole on the Arrowmont campus. Each of the AAW's 36 nationwide chapters had been asked to create one section of a totem pole and ship it to Arrowmont. Twenty-three sections arrived and were assembled during the symposium by AAW officers with assistance from Arrowmont maintenance personnel. Many of the sections exhibit creativity, humor, and remarkably fine workmanship. The project was a resounding success and both totem poles continue to delight Arrowmont School visitors and students.



Former Arrowmont studio assistant Stoney Lamar answers questions during a Multiple Axis Turning demonstration. The demonstration was one of dozens that took place during the American Association of Woodturners national symposium hosted by Arrowmont School October 24-27, 1990.

"Don't Surrender to Peer/Beer Pressure"

Pi Beta Phi collegians from across the United States and Canada unite in a campaign against alcohol abuse during National Collegiate Alcohol Awareness Week (NCAAW). These collegians are taking a stand and making alcohol awareness an everyday word in their chapters.

Washington Alpha pledges from the University of Washington invited a speaker to the chapter house for a one hour seminar about the drug alcohol and how it affects the body. The chapter also started a new program called Sober Sisters. The program provides a list of chapter members who will go to functions at which there is social drinking and remain sober to drive others to their home.

California Lambda members are known for starting the program RELY on the University of California at Riverside campus. RELY is a safe-ride program for students who drink and can't drive home or people who need a safe ride home from a party. RELY is in service Wednesday, Friday and Saturday nights from 10 p.m. to 2 a.m. The drivers include two members of each Greek organization, as well as other groups on campus. As calls come in, a female, and a male are sent to pick up the student.

Pennsylvania Zetas at Washington and Jefferson College showed their support of NCAAW by displaying a banner reading "Pi Beta Phi supports NCAAW." At the end of the week the Pennsylvania Zetas held a non-alcoholic party entitled "The Houdini Party...The Alcohol Has Escaped." Dana Icenhour, Shannon McClone and Joanna Rodgers

coordinated the event with the assistance of the entire chapter. Party invitations were extended to faculty, administration, Pi Phi alumnae and the entire student body. "Mocktails" and appetizers were prepared and served by the chapter members at the chapter dormitory. Entertainment consisted of dancing and a special guest appearance by magician Bob Fellows. At 8:00 p.m.



Collegians from California Delta, UCLA, wearing their NCAAW buttons with the Pi Phi theme, "Don't Surrender to Peer/Beer Pressure."

the party was moved to the college student center where the Pi Phis and men of Delta Tau Delta sponsored yet another alcohol awareness program, starring Bob Fellows in his "Mind over Manipulation" act. Mr. Fellows used his magic to show students the dangers of alcohol.

As part of NCAAW, **Franklin College** and Marriott food service sponsored a "mocktail" bar throughout the week. The purpose of the bar was to call attention to alternatives to alcohol. There was a different drink each night, as well as various guest bartenders. Copies of the drink recipes were available free to all interested students.

"I'm free for the weekend!" became the theme of the campaign in which **Arizona Alphas** pledged not to drink alcohol for the weekend after NCAAW. Signatures of those involved were sent to the Governor's office and the students were recognized by the Dean of Students office. On October 18, Pi Phis at the University of Arizona provided "Mocktails' on the Mall." Paired with the men of Phi Beta Sigma, the students raised money to donate to Alcoholics Anonymous.

During NCAAW, the **Arkansas Alphas** sponsored an evening speaker in the University of Arkansas ballroom. All students and faculty were invited to attend the free event. Topics such as alcohol laws and penalties, and levels of intoxication were discussed and questions from the floor were answered.

Allison Pokras, **Virginia Delta's** Panhellenic Representative headed the chapter's involvement during NCAAW at Old Dominion University. Events included demonstrations of the immediate effects of alcohol, the relation of alcohol and sex, a panel discussion with experts in all fields involving alcohol, breathalyzer demonstrations and finally a challenge to all student groups on campus to participate in the "Octo-Beer-Fast." The challenge was directed at all students of legal age and involved pledging not to drink that weekend.

At Drury College, the **Missouri Gamma** VP Moral reads the chapter



myths, tips and facts about alcohol as part of chapter programming. The chapter also devised a system in which four active members serve as designated drivers and monitors at parties, dances and exchanges. In addition, the chapter has an arrangement with another sorority at Drury College to provide taxi service for members of the sorority during a dance or party.

Texas Etas are the reigning champions of a "mocktail" contest at Texas A & M. Several guest speakers visited the campus during NCAAW to encourage responsible behavior in regard to alcohol.

Mississippi Alpha won first place for its participation during NCAAW at the University of Southern Mississippi. The chapter put on its own program, which featured three recovering alcohol and drug abusers who told their stories to the chapter. The chapter also wrote and performed two alcohol awareness skits during the program. The skits were judged by a USM Alcohol Task Force member. Finally, the chapter sponsored a "Line Up to Sign Up" booth giving students a chance to pledge to be alcohol and drug free during the week.

Alabama Gamma reports that Auburn University's Student Government Association took the lead in informing students of the risks of alcohol abuse during NCAAW. They had an information table at a popular gathering spot on campus where they handed out flyers and answered questions from students. The group also showed the danger of drinking and driving by displaying a car which had been involved in an alcohol related accident.

Kansas Betas hung a banner from the chapter house balcony telling passers-by at Kansas State University "Don't Surrender to Peer/Beer Pressure." The chapter also redesigned their chapter alcohol policy. The modifications include stiffer penalties for those underage found drinking at a party or function. The K-State Panhellenic and Interfraternity Councils have appointed a task force to investigate solutions to the alcohol problem found within the Greek



Kansas Alphas held a miniature golf tournament during NCAAW. VP Moral Amy Mills said, "It was an activity which showed us we can have fun without alcohol." From the left, Katy White, Michelle Camp, Kari Stubbs, J. D. Miller, Amy Mills, Anne Rickers and Joni Little.



Arizona Alphas and Phi Beta Sigmas hosted "Mocktails' on the Mall" during NCAAW at the University of Arizona. Pi Phis Lori Colangelo, Jennifer Keegan, Danette Marci, Ann Fallgren and Megan Cavanaugh and Phi Beta Sigmas team up with an alcohol dummy in the campaign to fight irresponsible use of alcohol.

system. Junior Amy Miller, task force member, said that their goal is to provide alternatives to drinking at parties and functions.

New York Delta and other Greek groups at Cornell University sponsored GAMMA—Greeks Advocating Mature Management of Alcohol. Events featured several lectures and social events for both Greek and non-Greek students. Events were designed to emphasize the impact of alcohol in students' lives as well as supply alternatives to alcoholic social functions.

Last fall the **Oklahoma Betas** held an alcohol awareness seminar and invited all Oklahoma State University students to attend. A speaker was invited to address the effects of alcohol abuse and how it can be prevented.

Texas Deltas had a unique seminar last semester at Texas Christian University. The first night Dr. Peggy Barr, Vice Chancellor of Student Affairs, was the guest speaker. She presented a mock trial. Using the active members, Dr. Barr showed what would happen if a case involving alcohol and negligence were taken against Pi Phi. The second night the chapter hosted a speaker from the office of Drug and Alcohol Education. She was able to give the chapter some

very surprising statistics and figures concerning the functions of the body after alcohol consumption.

Pennsylvania Eta was at the forefront of the action during Lafayette College's NCAAW activities. The chapter proudly displayed a banner with the Pi Phi theme "Don't Surrender to Peer/Beer Pressure." The

chapter also participated in the annual 1-mile Fun Run around campus, sponsored by the college's alcohol awareness group On-Taap. Pi Phis boasted the largest attendance of any organization at a student-faculty "mocktail" party.

Arizona Gamma Theresa Bruno, Panhellenic Philanthropy and



Kansas Alphas showed their support of National Collegiate Alcohol Awareness Week to the entire University of Kansas with this banner hung outside the chapter house.

Letter From a Collegian

My name is Sara Lou Hicks and I am a member of the California Theta Chapter of Pi Beta Phi (University of California at Davis). In recognition of Pi Phi's Alcohol Awareness Week I would like to comment on the strengths of my chapter's involvement toward alcohol abuse prevention. I am a recovering alcoholic and have been sober for 22 months. I went through a 28-day inpatient treatment facility for drug and alcohol abuse when I was a junior in college and an active member of our Fraternity.

My chapter has been a valuable asset towards my recovery and has since opened its doors to programs related to preventing alcohol abuse. We have initiated a safe rides program within our chapter which accommodates for drinking and driving abuse. In addition to the safe rides program, there is an enormous amount of communication about the prevalence of alcohol abuse in our society and on our campus.

Communication and acceptance of the need to be aware about alcohol related issues are the most important assets of recovery. Our chapter members have opened their minds about the nature of this disease and truly recognize the need to be aware in order to prevent future misfortunes. Alcohol Awareness Week is a strength of our Fraternity and lasts more than just a week in my chapter and my life!

Angela Burgmeier, **Ohio Theta**, is the spokeswoman for G.A.M.M.A.—Greeks Advocating Mature Management of Alcohol. This group began meeting in 1989 and now meets bi-weekly to discuss the problems of alcohol within the Greek system. Angela's position includes organizing and leading each meeting. The organization's main goal for the spring semester is to publish a notebook full of non-alcoholic ideas for each chapter's social chairman.

A speaker from the Lubbock County Alcohol Abuse Center visited the **Texas Gammas** at Texas Tech University to give information on substance abuse and how to get help when a problem occurs. Several Texas Gammas serve as volunteers at the center.

Ontario Betas were members of a panel that included police, a member of Alcoholics Anonymous, a nurse from a treatment center and other members of fraternities and sororities. The panel, in a talk show format, answered questions about alcohol use and abuse. The chapter emphasizes alcohol awareness throughout the year. Before Christmas break "Don't Drink and Drive" ribbons were handed out for members to place on their cars. The ribbons were sponsored by Students Against Drunk Driving (SADD).

Programming Chairman, got the Greek community at Northern Arizona University more involved than ever in NCAAW. The Arizona Gammas worked with the local chapters of Pi Kappa Alpha and Sigma Phi Epsilon to sponsor "Friend to Friend." In addition to the film, the program featured a panel of guest speakers ranging from local police and a judge, to recovering alcoholics from the NAU Greek system.

Pennsylvania Epsilons at Penn State University decided to invite an informed guest to talk to the chapter about alcohol awareness. An officer from the University Police Services came to the Pi Phi suite. Acting as volunteers, two Pi Phis of legal age each drank a set amount of alcohol under the supervision of the officer. He performed a series of tests on them, including a breathalyzer test. He demonstrated how body weight and size affect how quickly a person becomes impaired by alcohol. Each member drank the same amount, yet they both had different levels of blood alcohol content. Perhaps most important of all was the fact that both members were over the limit for being legally intoxicated. It proved to the chapter how most people aren't in as much control as they appear to be or

think they are after only a couple of drinks

During NCAAW, **Oregon Beta** held a non-alcoholic barbecue with the men of Beta Theta Pi at Oregon State University. The chapter also received the Kappa Alpha Theta Alcohol Awareness Award two years in a row for completing a required number of alcohol awareness programs and alcohol-free activities.

Louisiana Alpha hosted a workshop in which a counselor from Tulane University's health center spoke with members on drinking responsibly.

Iowa Beta members at Simpson College participated in the college's casino night. Many Pi Phis worked as dealers and bankers to promote fun, free of alcohol.

Ohio Theta was very involved during NCAAW at Bowling Green State University. The chapter won the outstanding attendance award at the Greek "Mocktail" Party. Five members, Lisa Arcaro, Justine Carpenter, Kathleen Crosby, Kristen Gibbons and Jenny Payne attended a training session about the planning of "Natural High" or non-alcoholic parties.



Pennsylvania Zetas Patty Papadimitrion and Julie Grebenz are mixing non-alcoholic drinks at "The Houdini Party- the Alcohol Has Escaped" at Washington and Jefferson College.

Collegiate News

Two **Illinois Epsilons** are big names in sports at **Northwestern University**. Senior Tami Neuhausel is a member of NU's field hockey team. Tami was named second team All-American and selected to the all-Midwest Collegiate Conference team. Junior Katy Marringa is president of the Equestrian Club this year. She competes in the Intercollegiate Horse Show Association against 14 other colleges in the midwest.

Jennifer Masters and Julie Livergood of **Illinois Eta** have been initiated into Alpha Kappa Psi, a business honorary at **Indiana-Purdue University at Ft. Wayne**

Ohio Iota hosted an Open House on October 28 at **University of Dayton**. The chapter wanted to thank the alumnae for their generosity and help in obtaining a new chapter house.

Last fall the **California Eta** Chapter implemented a new activity called Care Day. The chapter used Care Day to spend time together to talk and air any concerns about the chapter. It was a way to reach out to the members with the message- "I care about you and respect your feelings and concerns." The day was spent in a park near **University of California (Irvine)** where questions and concerns were addressed in an informal manner.



Alabama Gamma Kathy Agee was selected as the 1990 Ideal Sorority President by the Auburn University Panhellenic Council.



California Epsilons Carrie Van Horik and Kim Fisher deliver bags filled with snacks for troops serving in Operation Desert Storm. The chapter members took the gifts to a local Marine Corps office which then shipped them overseas.

Deupree Pickell, **Arkansas Alpha**, landed the role of Pitti Sing in the 1991 Gilbert and Sullivan opera **The Mikado** at the **University of Arkansas**. The opera will be performed this spring in the university theater.

Two **Ohio Alphas**, Alysse Hecker and Natalie Williams, hold seats on Ohio University's Student Senate. Alysse represents the college of communications and Natalie represents outside housing.

New Jersey Alpha Kristi Hakman earned the Ivy League's Most Valuable Player award for women's

varsity volleyball. Kristi helped led the Princeton University team to a second place finish in the league with a 22-6 overall record.

Three sophomores from **Missouri Gamma** were chosen by **Drury College** faculty, administration and students to attend the annual Governor's Leadership Forum. Stephanie Chapman, Sarah Gardner and Libby Miller were three of only eight students selected to attend.

Mississippi Alpha won the best overall float in the sorority division at **University of Southern Mississippi's Homecoming 1990**.



Kansas Betas Sarcy Frick, Arriane Gump and Jeanine Franklin are on **Kansas State's ICAT Advisory Board**. ICAT, which stands for **I Contributed A Twenty**, is one of **K-States** main sources for additional funding for non-revenue sports.

A **South Dakota Alpha** has taken campus safety into her own hands by helping start an escort service at the **University of South Dakota**. Amy Lorenzen serves on the committee for the **On-foot/On-campus** service. She initiated the development of a committee and did much of the research for forming the escort service. The service began operating at the beginning of the spring semester.

Illinois Iota Maggie Walton has been elected secretary of Panhellenic at **Illinois State University**.



Washington Beta Cassandra Held is the new **Panhellenic President** at **Washington State University**.

New York Zetas Lisa Thompson, Deborah Enea and Tammy Tonucci are members of the prestigious group **Konosioni** at **Colgate University**. **Pi Phi** has the largest representation of any Greek group on campus. Projects for **Konosioni** include **Freshman Field Day** during orientation, and **Senior Field Day** during senior week. Members also host a blood drive and sponsor lectures and films on campus.

Missouri Alpha Debbie Powell has been selected treasurer of the **University of Missouri FFA Alumni Association** and is a student recruitment intern for the college of agriculture.



Mississippi Alpha Chapter President Christy Sanders was chosen to be a member of the **University of Southern Mississippi's Southern Style**. Twenty-five students comprise **Southern Style** which assists with summer orientation and entertains guests of the university throughout the year.

Wendy Raymond, **Illinois Alpha**, has been elected as **Monmouth College's** Student Association Vice President. Wendy has been involved in student government for the past three years.

Every year during the holiday season, the **Butler University** Ballet performs the Christmas favorite, **The Nutcracker**. This year the

performances were accompanied by the **University Symphony**. Four **Indiana Gammas** are members of the symphony, Leigh Anne Essig, violin, Sandra Shaefer, oboe, Kathryn Kolata, violin and Angela Pullam viola.

Illinois Theta Claudine Kazanecki was selected as **Bradley University's** Greek Woman of the Year. Claudine was presented with the honor at an awards dinner.

Sarah Reed, **Alabama Gamma**, is a member of **Rho Lambda**, a Panhellenic honorary at **Auburn University**.

Noel Mann, **Ohio Eta**, was awarded an all Greek scholarship by the Panhellenic Council at **Denison University**.



Louisiana Betas from **Louisiana State University** Kathy Michels, Melanie Lanoux, Sondi Ward, Lisa Frish, Deborah Erny, Amy Crawford and Kara Kessler sell Christmas cards at a local high school fair. Proceeds went to **M.D. Anderson Cancer Hospital** in **Houston, Texas**.



Oklahoma Beta Kerrye Garrett from **Oklahoma State University** performed at the Macy's Day Parade last Thanksgiving. She was one of fifty chosen to be on the National Cheerleading Association staff to instruct six hundred cheerleaders for the event. The group practiced for eight days in New York City to prepare for the parade.

In supporting the sale of Pi Phi Express items, **Texas Deltas** at **Texas Christian University** decided to combine a sale with big sis appreciation day.



Texas Beta Amanda Mason with her English professor at a professor's dinner hosted by the Pi Phis at Southern Methodist University

Recently rewarded for her efforts, **Washington Beta** Melissa Barnet received the honor of Programmer of the Month in September by **Washington State University** Panhellenic Council.

Washington Beta Heidi Adams can be seen weekly on the nationally syndicated news network CNN. Heidi gives a five-minute broadcast of world, national and local events. Heidi is a senior at **Washington State**

University majoring in communications with an emphasis on broadcasting.

Oregon Beta Chapter placed third in grades among the fifteen sororities at **Oregon State University**.

Gentry Lane of **California Iota** hosted the premier of Inside Issue, an Associate Students talk show. Gentry is Commissioner of Communications for the student governing body of **California State University's Chico** campus. The open forum touches on controversial issues. The show's first guest was university president Robin Wilson. Gentry hopes to do the show on a regular basis featuring guests and issues that would appeal to students

Groundbreaking ceremonies for new sorority townhouses at Birmingham-Southern College were held on December 4, 1990. Present at the ceremonies were Dr. Neal R. Berte, President of Birmingham-Southern College; Amy Thraser, President of BSC Panhellenic Council; Dudley Long, BSC Vice President for Student Affairs; Gwin Dill, Sorority Townhouse Campaign Coordinator; and alumnae Frieda Roser White, Zeta Tau Alpha; Annette Mitchell Mills, Pi Beta Phi; Katherine Meadow McTyeire, Kappa Delta; Francislee Martin Boulware, Chi Omega; Sara Dominick Clark, Alpha Omicron Pi, and Dorothy Thompson Chambers, Alpha Chi Omega.

The **New York Deltas** and men of Psi Upsilon at **Cornell University** raised more than \$80,000 for the Cornell Fund during a phon-a-thon in early November.

California Theta celebrated its 10th anniversary this year. Alumnae were invited to the newly remodeled house at **University of California (Davis)** for brunch, a commemorative slide show and a ceremony. Chapter President Jennifer Walwark led a special candlelighting ceremony in which 10 alumnae representing each of California Theta's ten years stood in a semi-circle. One at a time, they shared a special Pi Phi memory from that year.



Executive Council members of **Indiana Gamma** "Aiming High" during a retreat last July. The group planned the implementation of new programs and revision of older programs for the coming school year.

Nebraska Beta Shawn Burnham from **University of Nebraska** was recently appointed by Nebraska Governor Kay Orr to the Governor's Youth Advisory Council. The council, which meets two to three times a year, spends day-long sessions with the governor to construct proposals and programs that pertain to the youth of Nebraska. Topics being discussed in the next session include drug awareness, prevention and education.

Michele Brashears of **Missouri Alpha** has been chosen as the secretary to the Greek Council at the **University of Missouri** and Michele Yansen is the 1991 Panhellenic Rush Chairman.

Pennsylvania Zeta Amy Fiore organized a program on the subject of campus rape during Sexual Awareness Week at **Washington and Jefferson College**.

Washington Beta recently joined with three other campus sororities in an exchange with Residence Life and Housing at **Washington State University**. The residence halls and sorority houses opened their living areas for views of different living environments on campus. The exchange included house tours and refreshments.

The women's acappella singing group at **Colgate University**, the Swinging Gates, includes three **New York Zetas**. Pam Douglas, Karen Eno



Maryland Betas Julie Krolicki, Cathy Zimmerman and Nancy Persh are members of the University of Maryland Marching Band.

and Cynthia Tsai perform with the Swinging Gates at concerts, tailgates and prior to athletic events. The members practice two nights each week.

Last November, **Nebraska Beta** held its third annual activities banquet. Reports were given on new organizations on the **University of Nebraska** campus, seminars, retreats and campus events. In addition, chapter members were recognized for outstanding service to the campus and community during the banquet.

Kari Porter, Leslie Stamper, Christine Stanard and Elizabeth Westling of **Missouri Alpha** are members of the award-winning **University of Missouri Golden Girls**. The Golden Girls won the Pom/Dance Division I national title at the National Cheerleaders Association Collegiate Cheerleader and Pom/Dance Championships in Dallas,

Texas. More than 1,250 cheerleader and pom girls from 60 schools in 25 states participated in the competition.

Indiana Zeta VP Moral Maravene Moudy has organized a committee for those chapter members at **Ball State University** interested in writing our troops serving in Saudi Arabia.

Ohio Iota held its first annual Parent's Weekend October 19-21, 1990. Activities included a barbecue, football game and brunch at the **University of Dayton**.

Arkansas Alphas Amy Frazier, Suzette Didier, Catherine Thomas and Noelle Tinnin helped win IBM's PS/2 computer slogan contest. The catchy phrase "PS/2 will get you through" and the backup material of the **University of Arkansas** advertising club topped entries from the other ten universities. The reward: \$200,000 worth of computer equipment for the School of Journalism's advertising department.

During the last week in October, the **Illinois Alphas** at **Monmouth College** took part in the school's annual Trio Days. Trio Days is a week-long celebration for the sororities at Monmouth. Members of Pi Beta Phi, Kappa Kappa Gamma and Kappa Delta participated in such events as a viewing of Pi Phi's "Friend to Friend" program.

The **Louisiana Alpha** soccer team won **Tulane University's** Intramural Championship with a record of four wins and one loss. Sports chairmen Kris Meyer and Maureen Nester led the Pi Phis to victory.

Alberta Alphas Carrie Causing, Susan Ghali and Shawna Donlevy participating in street painting for underprivileged children during Greek Week at **University of Alberta**.



THE SPIRIT OF PI BETA PHI

Keep It Alive With The Pi Beta Phi Classic Visa

One of the most important qualities that makes this Fraternity great is the spirit and dedication of its members. We have a long tradition of sisterhood and service to the community of which we are justifiably proud. Now, simply by taking advantage of a great credit card offer, you can help continue that tradition.

The Card For You.

Try the Pi Beta Phi Card for one full year with no annual fee. See how it feels to carry the Pi Beta Phi spirit with you wherever you go. After the first year, your annual fee is only \$18. Cards with comparable features frequently have annual fees of \$25 and more!

Our low 16.5% Annual Percentage Rate is one of the lowest available. And, if you choose to pay your balance in full each month, you can avoid interest charges altogether.

As a Pi Beta Phi cardholder, you'll be entitled to free membership in the Premier Travel Club. With Premier Travel, you can be assured that you are always getting the best travel value. Beach or business ... a trip home or a trip to the Orient ... Premier is the best connection you can have in the travel business.

You'll also qualify for a 5% cash bonus whenever you make your travel reservations through Premier Travel Club and pay for them with your Pi Beta Phi Card.

And, you'll get \$250,000 free travel accident insurance on all trips charged to your card.

And, there's more. You'll save every time you rent a car with your special member discounts from Hertz, National and Avis anywhere in the USA.

Your Premier Travel membership also means that wherever you go, you'll be able to use our 24-hour travel message service for those times when it's hard to make connections. And, if you're ever stranded away from home without your card, we can provide you with up to \$1,000 emergency cash and an airline ticket home.



The Card For Us.

We have a right to be proud of our Fraternity and every time you use your Pi Beta Phi Card you'll be showing that pride.

And, of course, every time you make a purchase with your card, First Tennessee will make a contribution to the Fraternity at no cost to you. The more we use our cards, the more our Fraternity will benefit.

The Time Is Now.

Call the toll-free number today and start putting your credit card to work for Pi Beta Phi.

Please call 1-800-669-7474, Ext. 023

Alumnae: To apply
Students: To request an application

Directions

Pi Beta Phi's Career Networking Program

Name _____
 Address _____
 City/State _____ ZIP _____
 Chapter _____ Year of Initiation _____

PLEASE CHECK THE APPROPRIATE BOX:

- I am updating my previous registration. See below.
- I am requesting to be a career source. By completing this form, I understand that the following information may be released to any Pi Phi who requests the information.

From the following chart please give: OCCUPATION _____, # _____

Name of COMPANY _____

Title _____

City location of your company _____

Closest metropolitan area _____

- I am requesting information. Enclosed is my \$3.00 check payable to Pi Beta Phi. (The \$3.00 fee covers all processing costs regardless of the number of requests.) Please send me name of Pi Phis in the following occupations::

Occupation Code # _____ # _____ # _____

Geographic preference (City) _____ (State) _____

(City) _____ (State) _____

(City) _____ (State) _____

Occupation Numbers

010 Accounting	150 Dancing	290 Industry/Manftg.	440 Printing
015 Acting	155 Data Processing	295 Insurance	445 Psychology
020 Administration	160 Dental Hygiene	310 Interior Design	450 Public Relations
025 Administrative Asst.	165 Dentistry	315 Investment Banking	455 Public Service
030 Advertising	170 Dietetics	320 Investments	460 Real Estate
035 Agriculture	175 Drafting	325 Journalism	465 Recreation \
040 Airlines	180 Economist	330 Judicial	470 Religion
045 Animal Husbandry	185 Education, Early Dev.	335 Landscaping	475 Reporter
050 Antiques	190 Education, Elementary	340 Law	480 Research
055 Architecture	195 Education, Secondary	345 Library Science	485 Restaurant Mgmt.
060 Art	210 Education, Higher	350 Management	490 Retailing
065 Attorney	215 Education, Special	355 Market Research	495 Sales Representative
070 Banking	220 Employment Service	360 Marketing	510 Science
075 Biology	225 Engineering	365 Mathematics	515 Secretarial
080 Broadcasting	230 Entertainment	370 Media, TV Radio	520 Social Work
085 Buyer	235 Environment	375 Medical Technology	525 Speech
090 Catering	240 Fashion Design	380 Medicine	530 Sports
095 Chemistry	245 Film	385 Military	535 Statistics
110 Communications	250 Finance	390 Museums	540 Stockbroker
115 Computer Science	255 Fitness	395 Music	545 Student Services
120 Construction	260 Government	410 News	550 Theater
125 Consulting	265 Graphic Design	415 Nursing	555 Travel
130 Counseling	270 Health Services	420 Personnel	560 Veterinarian
135 Court Reporting	275 Historian	425 Pharmacy	565 Writer
140 Crafts, Art	280 Horticulture	430 Photography	
145 Crafts, Trade	285-Hotel Administration	435 Physician	570 Other

**Return to: Pi Beta Phi Central Office
 7730 Carondelet, Suite 333
 St. Louis, MO 63105**

1989-90 Award Winners



Ohio Theta received the DC Alpha Panhellenic Award for panhellenic participation in a large chapter. Pi Phis from Bowling Green State are shown with the award.



Donna Durham Thomas, Pam Sanders Autrey, Betty Bergfeld Knight, Patsy Read Browning, Ann Bragg Ressmann, Aimee Kane Sheehan, Betty George Cotten are all members of the award winning Texas Alpha Alumnae Advisory Committee.



Jena Franklin, California Epsilon, was the recipient of the Adda P. Williams Award for best academic excellence chairman. Jena attends San Diego State University.



Executive Council members of Virginia Zeta proudly display their national awards for the 1989-90 year. Virginia Tech Pi Phis received the Directors' Award for the fourth best Pi Phi chapter, the Annette Mitchell Mills Award for the most outstanding chapter ten years old or less, and the Alumnae Province Presidents' Award for the best fraternity education.



Pi Beta Phi's Kansas Beta Chapter at Kansas State University was the 1989-90 recipient of the Stoolman Vase for second best collegiate chapter.



Michigan Beta Executive Council members show off the Balfour Cup. In 1989-90 the chapter at the University of Michigan was named the Fraternity's top chapter.



For the third consecutive year, Ohio Delta has won the Dr. Hazel B. McCuaig Award for the highest G.P.A., small chapter. Executive Council members from Ohio Wesleyan University display the the beautiful round silver tray.



Oregon Gamma Pi Phis from Willamette University were recognized for their outstanding community service by receiving the Lucille D. Carson Award.



The Marilyn Simpson Ford Award for best ARROW Correspondent went to Jennifer Prall of Indiana Alpha. This Pi Phi from Franklin College provided outstanding contributions to The ARROW during 1989-90.

The D.C. Alpha Panhellenic Award for panhellenic participation in a small chapter went to Missouri Beta, Washington University.



Alumnae News



Three members of the Athens, Ohio Alumnae Club provided the leadership for the 32nd annual Starlight Ball, the proceeds of which will be used to buy special equipment for the pediatrics department of O'Bleness Memorial Hospital. Pam Mitchell, RN, demonstrates a blood pressure monitor to Elsa Javert Heffelfinger, Jane Maccombs Wood and Gene Porter Wheaton.

nation's most outstanding first-year teachers. Selection was based on the nomination by the Eureka, Missouri school system and judged by a panel of experts assembled by the American Association of School Administrators. Charisse received her undergraduate degrees in journalism and Spanish from the University of Missouri. She is currently seeking a master's degree in secondary education.

The Cleveland West Alumnae Club's Arrowcraft Chairmen Marni Wilbert Peate and Sherry Rundell Hildebrandt hosted three very successful sales. The club will be hosting a fashion show with the area Delta Gamma alumnae this spring.

The Alumnae Panhellenic Association of Washington D.C. held its 58th annual scholarship luncheon and awards program on November 3, 1990. Each sorority was invited to have a booth to sell items. At the Pi Phi Arrowcraft booth were DC Club members Patricia Hatton Bellamah, Virginia Hawkins Weitzel, club president and Eldridge Loeffler Kiessel, club vice president.

A recent exhibition at the Eastern Washington State Historical Society featured the regional prints of **Jane Dunning Baldwin**, Washington Beta. In addition, a few of her pieces were selected to be in the One Hundred Years of Washington Artists exhibit for the state of Washington centennial. A graduate of Washington State College (now University), Jane has long been active in art circles in the Inland northwest. While a college student, she helped organize the Sigma chapter of Delta Phi Delta, a national art honorary and was president of the local art honorary, Tau Kappa Tau. Except for a short time in San Francisco, Jane lived all her life in Spokane. She is now retired.

Under the capable leadership of Mary Collum Buchanan, the **Olivia Smith Moore Alumnae Club** of Texarkana has fulfilled its obligation of \$4,000 to refurbish and restore to its original beauty the master bedroom and bath of the lovely "Ace of Clubs House." Miss Olivia gave the house to the Historical Society of Texarkana when she died in 1985. The rooms which were restored include displays of Pi Phi memorabilia plus more than 100 pairs of Miss Olivia's shoes.

The Golden Arrows of the **Indianapolis Alumnae Club** had their luncheon in October of 1990.

Seventy-five Pi Phis of fifty years or more were in attendance.

Abby Sargent Neese has published four books about Sargentville, the village on Eggmoggin Reach, Maine, where she was born. Abby was president of the National League of American Pen Women, Philadelphia branch during 1980-82 and Pennsylvania state president of N.L.A.P.W. from 1986-1990. An avid traveler and writer, she has recorded graphic descriptions of her Caribbean Cruises and her odysseys to Hawaii and through the U.S.. Abby is a Maine Alpha and Golden Arrow member.

The Las Vegas Alumnae Club raised funds by holding a Christmas Boutique at their December meeting. The meeting was held at Jaymie Morris Bodensteiner's home and featured several local craftswomen selling Christmas gifts and decorations.

Missouri Alpha **Charisse Edwards Litteken** was selected as a recipient of the Sallie Mae award. This national award recognizes 100 of the





The Toledo Area Alumnae Club held its second annual Lunch with Santa on December 1, 1990. Children of alumnae and their guests were greeted by Santa, enjoyed a Christmas sing-a-long and worked on craft projects. Chapter members from University of Toledo, Ohio Epsilon, assisted Santa.

The Hinsdale/Naperville Alumnae Club has been working to increase their membership. The club considered the needs of its members beyond the monthly meetings and decided to extend the club's activities to include a "Moms & Tots" group and a "Lunch Bunch." Attendance for both activities has increased each month.

Pi Phi alumnae in the Greenville, South Carolina Alumnae Club were not only angels during the Christmas



Anne Bush Hills and Roody, her dog, were the Honorary Chairmen at the Nashville Alumnae Club's Christmas Village. Anne, an Arizona Alpha, has been hearing impaired since she was eleven years of age. Roody came into her life two and one-half years ago.

Pi Phi Serves as Social Secretary to the White House



Linda Faulkner, Tennessee Beta, served as Social Secretary to the White House under President and Mrs. Reagan. In this capacity, she planned events honoring royalty as well as heads of state and worked with some of the greatest performing artists in the world. Currently, Linda is writing a book about her experiences in the White House and is also engaged in a professional speaking career.

Ms. Faulkner began her career as production assistant and assistant director for KERA TV, the Public Broadcasting station in Dallas, where she worked for three years. She later became public relations manager for Neiman-Marcus in Dallas, and in 1984, established her own public relations firm.

season, but Santa's elves as well. Each year the Children's Hospital in Greenville sets up a shop in an area mall in which children can do shopping for family and friends under the helpful guidance of volunteer elves. The selection of gifts is appropriate for the young shoppers and free wrapping is included.

Greenville, South Carolina area alumnae were enthralled by J.T. Pace who spoke at their September meeting. Mr. Pace is known across the nation for his involvement in adult literacy projects. He has spoken at the White

Her position as Social Secretary began in 1985 and involved coordinating and overseeing every event at the White House hosted by the President and/or Mrs. Reagan, from state dinners to south lawn picnics for 1,000. Linda invited and worked with a variety of performing artists for both state dinners and private dinners.

Linda also supervised "In Performance at the White House," the nationally televised PBS series showcasing popular American artists and composers of music from jazz to Broadway hits. The master of ceremonies for this series was Marvin Hamlisch and performing artists included Liza Minnelli, Mel Torme, Sarah Vaughan, Mary Martin and Bobby Short. As Social Secretary, her duties took her to the Soviet Union, where she coordinated the dinner hosted by the President and Mrs. Reagan for General Secretary and Mrs. Gorbachev in Moscow.

Linda was named Special Assistant to the President and was approved by the President to serve as a member of the Interagency Committee on Women's Business Enterprise.

In 1971, Ms. Faulkner graduated from Vanderbilt University with a degree in philosophy. While at Vanderbilt, she studied abroad at Aix-en-Provence, France. She continued graduate work in English literature at the University of Dallas. Ms. Faulkner served on the board of the Arts District Friends in Dallas from 1984 to 1985.

Ms. Faulkner has addressed such groups as AT&T, Dow Chemical U.S.A., KRAFT, the International Special Events Society

House as the invited guest of Mrs. Barbara Bush and has appeared on national television ads. Mr. Pace further emphasized the need for help in addressing illiteracy as outlined in Pi Phi's "Links to Literacy" program.

Alicia Miller, Missouri Beta and member of the **Manhattan Alumnae Club**, recently danced her way through the national tour of Nonsense. Prior to her role in Nonsense, Alicia appeared in Europe on the world tour of Evita. She has also performed in the national tours of The Music Man with John Davidson and The Sound of Music with Debbi Boone.



Hazel Chuso West is celebrating more than 80 years as a member of Pi Beta Phi. Hazel was initiated into Kansas Alpha in 1910. Hazel celebrated her 100th birthday, September 9, 1989.

Indiana Delta members from the classes of 1966, 1967 and 1968 gathered for a reunion weekend in July at Purdue University. Complete with skits, dinner at the chapter house and a Cookie Shine, the event renewed old friendships.

In December, the **San Francisco Alumnae Club** held an Arrowcraft sale at a Christmas boutique flea market. The flea market was held at the historic Presidio Army Base located near the Golden Gate Bridge in San Francisco. The club sold more than \$250.00 of merchandise.

Baylor University has named Houston City Council member **Eleanor Tinsley** one of its distinguished alumni. The university honored Eleanor and four other Baylor alumni at a banquet in Waco on January 18. "The honor is bestowed on alumni who have made a distinctive contribution to their professions, businesses or vocations and brought honor to the university in doing so," said a spokesman for the school. Eleanor is a Texas Zeta who is serving her sixth term as an at-large member of the Houston City Council. Her SPARK park project has built 42 neighborhood parks on school grounds and recently received the James C. Howland Urban Enrichment Award from the National League of Cities. Her Houston International Initiatives Program has taken 11 trade missions to Latin American countries to promote trade between Houston businesses and its neighbors south of the border.

First Woman President of United States Curling Association is a Pi Phi

It is an unusual sport in which Ann Ferguson Brown excels and certainly one in which she is making a clean sweep! This 1956 Michigan Gamma graduate and member of the Arlington Heights, Illinois Alumnae Club for thirty two years has been curling since 1969. Lest you think Ann spends more than her fair share of time in beauty parlors, a brief explanation of the sport of curling is in order. A team sport brought to this country in the middle 1800s by Scottish and Canadian immigrants, it is played on ice. The 133 curling clubs in the United States are located primarily in the northern states and Alaska.

Since 1969, this busy Pi Phi has been on teams that have won the National Bonsel (tournament) four times, the Illinois State Ladies Championship six time, and she and her husband Larry have represented Illinois in the National Mixed Championships three times. Ann

curled in Scotland for 21 days in 1986 on the U.S. Ladies Tour team. She served as President of the United States Women's Curling Association prior to serving on the United States Curling Association Board.

At the annual meeting of the United States Curling Association, Ann Brown was elected president of the 12,000 member organization. In 1986 the sport of curling joined the Olympic Committee and at that time it was mandated that women be added to the Board of Directors. Ann, elected to the board from the state of Illinois and after serving as vice president for two years and president elect for one year, becomes the first woman to serve as president of this national curling organization founded in 1958.

Ann's Pi Phi friends of the Arlington Heights Alumnae Club are not surprised at this latest honor bestowed on their energetic sister. In her thirty two years in the club, Ann Brown has served Pi Beta Phi in many capacities, among them as Alumnae Club President from 1967 to 1969. Knowing a good thing when they saw it, the Arlington Heights women honored Ann in 1987 as their Outstanding Alumna and as their Evelyn Peters Kyle Award nominee.

by Martha Kay Kelly Carter



Ann Ferguson Brown, Michigan Gamma, President of the United States Curling Association.

Pi Phi Appointed to the Order of Canada

Marjorie Montgomery Bowker, Alberta Alpha, and her husband Wilbur Fee Bowker of Edmonton, Alberta have had the distinction recently of each being appointed to the Order of Canada. This is considered the highest honor that Canada can bestow on its citizens for service to the country in a variety of fields. It was created by an act of parliament in 1967 to replace the British honors formerly received from the Queen. It is awarded strictly on merit.

Some 500 nominations are received each year from the general public, and include people from all walks of life. The final selection is made by an advisory committee of eight members with the

Chief Justice of Canada as chairman. The appointment carries no special privileges or monetary reward, yet it is regarded as the most prestigious award available to Canadian citizens.

Presentation of the Order of Canada is made at an investiture at Rideau Hall in Ottawa, the official residence of the Governor-General of Canada. It is considered a very gala occasion, with the official ceremony followed by a reception and dinner. Each recipient receives a distinctive badge bearing the crown and maple leaf, with a Latin motto inscribed with the words, "for the betterment of our country" The ceremony was held on October 24, 1990.

It is very rare for a husband and wife to be named to the Order at the same time. The awards were given for very different reasons. Mr. Bowker is known nationally as a legal scholar, academic and writer. He was for twenty years Dean of Law at the University of Alberta, and later became the first

Director of the Alberta Law Reform Institute.

Mrs. Bowker has herself had a distinguished career as lawyer, writer and jurist. After receiving university degrees in arts and law, she practiced with one of Edmonton's leading law firms. She took several years away from practice while raising their family. In 1966 she was appointed a judge of the Family and Juvenile Courts of Alberta, and served in that capacity for seventeen years. She dealt with cases involving domestic disputes, abused and neglected children, juvenile delinquents, spousal assault, disputes over custody and maintenance. She was instrumental in establishing within the court system a Marriage Conciliation Service - the first of its kind in Canada - aimed at preventing divorce, reducing divorce and conciliating differences created by divorce. It became a model for other courts in Canada, and was incorporated in the Family Court of Australia.

It was partly in recognition of her work in this field that in 1978 she was recipient of the Queen Elizabeth Silver Jubilee Medal, in 1981 the Alberta Achievement Award, and in 1983 the Award of Merit from the American Association of Family Conciliation Courts.

In 1968 she was invited to Korea to an anniversary celebration at Ewha Women's University in Seoul, one of the leading universities in Asia, to speak on "The Role of Women in the Next Half Century." There she received the honorary degree of doctor of laws. The only other speaker at this event from North America was Dr. Margaret Mead from New York, world-renowned anthropologist.

More recently she gained national recognition with the publication of two books (1988 and 1990) on public issues confronting Canada, both of which became national best sellers and on which she accepted no royalties. In

both books she was commended for making complex constitutional issues understandable to the average Canadian. Partly as a result of this, she was named "Women of the Year" in 1989 by the Business and Professional Women's Club of Edmonton and she later received the "Distinguished Canadian Award" from the Council of Canadians in Ottawa.

When asked what Pi Beta Phi was like in 1936, Majorie Bowker said, with a twinkle in her eye, that there was such a great spirit for Pi Phi and the fraternity system in general. Everybody was extremely close-knit. She added that today Pi Phi should continue to emphasize friendships and academics. Marjorie has a lifelong interest in Pi Phi and today her closest friends are her Pi Phi sisters.

The Bowkers, now both retired but active, celebrated their 50th wedding anniversary last year. They have three children, and seven grandchildren.



Alberta Alpha Marjorie Montgomery Bowker was given the highest honor Canada can bestow on a citizen.

Nearly 400 Iota Province Pi Phis, both collegians and alumnae gathered last April to celebrate their Pi Beta Phi heritage and friendships. Lucy Baker Warner, former Grand Vice Toastmistress of Alumnae, served as the toastmistress. Lucy encouraged all in attendance to "Be Proud of Pi Beta Phi

and all it represents. And represent Pi Phi well. . .work for it, and let the Pi Phi love you feel as a collegian grow into a cherished life-time experience." Iota Province collegiate chapters include Ohio Alpha, Ohio Beta, Ohio Delta, Ohio Zeta, Ohio Eta and Ohio Iota. Iota province alumnae clubs

include Akron, Athens, Canton, Cincinnati Cleveland East, Cleveland West, Columbus, Dayton, Delaware, Hudson, Portsmouth, Springfield and the South Central County Pocket Group.



Royal Cruise Line

Presents a Special Pi Beta Phi Cruise

MEDITERRANEAN

Royal Cruise Line invites you to cruise with Pi Beta Phi members on the glittering blue waters of the Mediterranean next Fall. Relax as the superb new *Crown Odyssey* takes you on an unforgettable voyage of discovery across the world's most romantic sea.

This fabulous cruise adventure begins in the beautiful city of **Lisbon**. From there you'll experience thrilling ports-of-call such as: **Tangier, Malaga, Palma de Mallorca, Nice/Monte Carlo, Florence, Rome, and historic Athens.**



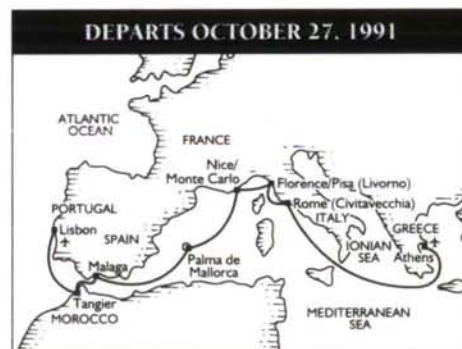
**Royal
Cruise
Line**

For reservations
and information
please contact:

The *Crown Odyssey* is quite simply the most elegant and beautiful ship ever built, filled with innovations which will set the standard for cruising luxury for decades to come. But you'll be most impressed by the uniquely warm and friendly style of life on board, a tradition with Royal Cruise Line that is maintained on this stunning new ship.

- ★ Pi Beta Phi is not responsible for any claims or damages in conjunction with the above cruise. Also, the cost of the cruise is not deductible as a charitable contribution for Federal income tax purposes.

Pi Beta Phi/Windjammer Travel
Claire R. Adams
1-800-633-1545



Special Bonus Amenities and Discount Fares!

Passengers sailing with the Pi Beta Phi group will receive the following:

- ★ 30% Discount off the regular published cruise fare if booked by April 1, 1991
 - ★ A hosted reception exclusively for Pi Beta Phi Passengers
 - ★ Pre-paid shipboard gratuities
 - ★ Souvenir Pi Beta Phi group photo
- PLUS**, passengers will enjoy **FREE AIR FARE** from RCL major gateway cities! Cruise prices for this fabulous Mediterranean cruise start at just **\$3030** per person.

IN MEMORIAM

Initiation Year and Month and Year of Death follow each member's name and chapter of initiation. When submitting death notices to Central Office, please give month and year of death. Names cannot be listed without this information.

Alberta Alpha

Marianne Pearson Linnell (Mrs. Lloyd) 1933; June, 1990

Arizona Alpha

Gladys Franklin Carroll (Mrs. J. H.) 1920; May, 1990

Margaret Neal Hale Herndon (Mrs. James P.) 1921; October, 1990

Ruth Benzie Sayre (Mrs. M. C.) 1923; October, 1990

Arkansas Alpha

Patty Joe Mahony Montgomery (Mrs. D.) 1936; October, 1990

Christine Richardson Murray 1920; December, 1990

Nancye Scott Smith (Mrs. E. B.) 1924; November, 1990

California Beta

Esther Babcock Smith (Mrs. G. A.) 1939; February, 1990

California Delta

Elburta Cole Somers (Mrs. William) 1949; September, 1990

California Zeta

Mary Oldfield Steele 1950; September 1990

Colorado Alpha

Dorothy Lavington Bennett (Mrs. E. E.) 1939; June, 1990

Louise Epperson Steinhauer (Mrs. Gurnett) 1932; December, 1990

Marian Bartram Waugh (Mrs. Richard) 1940; December, 1990

Helen Rees Whiteside (Mrs. Frederick) 1922; October, 1990

Connecticut Alpha

Margaret Shepherd Andrews (Mrs. William) 1943; April, 1990

D.C. Alpha

Constance Fryer Reese (Mrs. Robert) 1946; October, 1990

Helen Hughes Short (Mrs. Dewey) 1923; December, 1990

Florida Alpha

Willa Crosby Turner (Mrs. George H.) 1939; November, 1990

Florida Beta

Elizabeth (Ibby) Hargreaves Acree (Mrs. W. M. Jr.) 1924; September, 1990

Carolyn Jones LaMee (Mrs. Herbert) 1960; October, 1990

Margaret Painter Thale (Mrs. Jack) 1938; October, 1990

Kathryn Todd Warfield (Mrs. Donald) 1935; October, 1990

Florida Gamma

Sharon Jane Gardner Coltman (Mrs. Alan C.) 1962; December, 1990

Elizabeth Harbison Spear (Mrs. Dean) 1936; September, 1990

Georgia Alpha

Marilyn Navarre Schantini (Mrs. John) 1955; September, 1990

Idaho Alpha

Jean Irvin Campbell (Mrs. Robert D.) 1935; March, 1990

Anne Marie McMonigle Peterson (Mrs. G.) 1927; May, 1990

Illinois Beta

Catharine Crissey Probst 1915; December, 1990

Illinois Beta-Delta

Ellen Heyl Porter (Mrs. George) 1950; October, 1990

Illinois Delta

Lucile (Margaret) Barnett Hullfish (Mrs. H. G.) 1918; October, 1990

Helen Mills Hands (Mrs. Harold) 1913; September, 1990

Illinois Epsilon

Muriel Malme Cohrs (Mrs. J. C.) 1946; August, 1990

Louise Paullin Ingraham (Mrs. Samuel) 1915; October, 1990

Virginia Marshall Mdvile

(Mrs. J.G.) 1927; September, 1990

Edith Eberhart Sommer Reget

1920; November, 1990

Minerva Sands Strange (Mrs. E. H.) 1922; October, 1990

Illinois Zeta

Catherine McGorray Hadley 1935; November, 1990

Frances Keen Jeffries (Mrs. Charles H.) 1911; December, 1990

Illinois Eta

Virginia Lee Bowers Dashner 1939; October, 1990

Esther Reaich Ferrall (Mrs. George D.) 1919; December, 1990

Frances Kuny Roos (Mrs. Edmund) 1918; September, 1990

Indiana Alpha

Margaret Ruth Ritchey 1916; October, 1990

Jean Van Voorhees Sherwood (Mrs. E. Allan) 1938; December, 1990

Indiana Beta

Beulah Gibson Acre (Mrs. Robert) 1915; October, 1990

Marjorie Mangrum Lillenberg (Mrs. Vernon) 1930; December, 1990

Patricia Malone Williamson (Mrs. George E.) 1944; December, 1990

Indiana Gamma

Margaret Woodfill Morrison (Mrs. J. T.) 1928; October, 1990

Dorothy Drake Thomas (Mrs. Charles D.) 1925; January, 1990

Indiana Delta

Ellen Bassett Peterson (Mrs. H. L.) 1938; October, 1990

Jean Anderson Peterson (Mrs. J. R.) 1952; July, 1990

Sylvia Pittman Burkholder (Mrs. Howard) 1940;

Indiana Epsilon

Jean Givens Boll (Mrs. Von) 1949; November, 1990

Hazel Schultz Winsey Clark
(Mrs. Lawson) 1942; April, 1990

Iowa Beta

Dorothe Anderson Lanning
(Mrs. Wayne) 1915; October, 1990

Iowa Gamma

Alice Leefers Eichelkraut (Mrs. A.) 1929; October, 1990

Iowa Zeta

Beatrice Pentony Havens (Mrs. O. C.) 1922; September, 1990
Ruth Eikenberry Whalley (Mrs. John F.) 1928; December, 1990

Kentucky Alpha

Margaret Paine Turner (Mrs. James) 1941; April, 1990
Evelyn Ellis Watkins (Mrs. S. Rayburn) 1947; November, 1990

Louisiana Alpha

Arthemise Bouligny Baldwin Beardsley (Mrs. George) 1926; October, 1990

Louisiana Beta

Helen Hudson Radford (Mrs. Willard) 1937; December, 1989

Maine Alpha

Christine A. Northrup 1920; November, 1990

Manitoba Alpha

Shirley McDiarmid MacKay
(Mrs. Shane) 1943; October, 1990

Maryland Alpha

Miriam Connet Benson (Mrs. Carville) 1915; August, 1990

Massachusetts Alpha

Isabel McConachie Clement
(Mrs. Irving H.) 1928; November, 1990
Ruth Hollins Dresser (Mrs. William) 1928; August, 1990

Michigan Alpha

Elizabeth (Libby) Haefner Bowers (Mrs. F. M.) 1940; November, 1990

Minnesota Alpha

Myra Metcalf 1918; September, 1990
Betty Stewart Moran (Mrs. M. E.) 1942; April, 1990

Missouri Alpha

Barbara Embleton Denton (Mrs. G. W.) 1946; October, 1990
Jane Alford Wilson (Mrs. Garland) 1936; October, 1990

Missouri Beta

Adelaide Hodgson Hudnall (Mrs. J.) 1922; January, 1990
Julie Gilbert McMillan (Mrs. Sewell) 1957; November, 1990
Betty Chappel White (Mrs. Robert) 1935; December, 1990

Missouri Gamma

Vivian Grove Wrightsman (Mrs. Lawrence) 1919; September, 1990

Nebraska Beta

Pauline Killian Anderson Seccombe 1913; August, 1990
Ruth Sears Bundy (Mrs. John) 1933; September, 1990
Anne Hall Gilmer (Mrs. Robert) 1950; December, 1989

New York Alpha

Evelyn Van Alstine Boothby
(Mrs. C. R.) 1921; October, 1990

New York Delta

Dorothy Shaw Jones (Mrs. R. L.) 1934; October, 1989

North Carolina Alpha

Virginia Stevens Ziegler (Mrs. Mervin) 1932; September, 1990

North Dakota Alpha

Cosette Nelson Solis (Mrs. John) 1924; November, 1990

Ohio Alpha

Karen Jenkins King (Mrs. Rufus III) 1960; October, 1990

Ohio Epsilon

Alice S. Lee 1945; April, 1990

Ohio Zeta

Ruth Elizabeth Crabbe Voss Routh (Mrs. D. Marc) 1949; December, 1990

Oklahoma Alpha

Marguerit Spurlock Terry (Mrs. Robert) 1919; August, 1990

Oklahoma Beta

Wanda Simmons Jennings (Mrs. G. H.) 1947; June, 1990

Oregon Alpha

Jacqueline McCord Blenkinsop
(Mrs. Robert) 1936; October, 1990
Janie Filed Harris (Mrs. David) 1941; May, 1990
Mabel Madden Hasbrouck (Mrs. E.) 1923; October, 1990
Florence White Lawlor (Mrs. Richard) 1930; October, 1990

Oregon Beta

Malie Corbett Clark (Mrs. C. B. Jr.) 1940; November, 1990
Gail Sollender Sifford (Mrs. B. Jr.) 1936; July, 1990
Ruth Rendahl Welch (Mrs. W.) 1940; October, 1990

Oregon Gamma

Judith Mortz Benson (Mrs. Dean) 1953; August, 1990

Pennsylvania Alpha

Edith Cugley Huey (Mrs. W. R.) 1919; September, 1990

Pennsylvania Beta

Thelma Corman Decker (Mrs. Elmer) 1930; November, 1990
Anne Loughran Meyers (Mrs. Roy) 1939; April, 1990

Texas Zeta

Sybil Johnson Higginbotham
(Mrs. Rufus) 1977; October, 1990
Vermont Beta
Margaret Wood Averill (Mrs. L. M.) 1925; August, 1990

Virginia Gamma

Mildred Heinemann Wildnauer
(Mrs. W. R. Jr.) 1933; October, 1990
Washington Beta
Hazel Ellis Edmundson (Mrs. William Dean) 1930; December, 1990
Washington Gamma
Stephanie Ann Ausich 1988; November, 1990

West Virginia Alpha

Lois Buford Wash (Mrs. Thomas) 1949; October, 1990

Wisconsin Alpha

Florence Butler 1924; December, 1990

Barbara Mathys Wiedabach (Mrs. Jack R.) 1951; October, 1990

Wisconsin Beta

Frances Golick Castle (Mrs. A. L.) 1939; February, 1990

Fraternity Directory

Former Grand Presidents

- Alice Weber Johnson** (Mrs. Irwin T.) MO Beta, Box 337, Carmel Valley, CA 93924
- Dorothy Weaver Morgan** (Mrs. Kent R.) NE Beta, 2540 Stockwell, Lincoln, NE 68502
- Sarahjane Paulson Vanasse** (Mrs. Horace) WA Beta, 3401 25th West, #520, Seattle, WA 98199
- Elizabeth Turner Orr** (Mrs. J. Gordon) OR Alpha, 14800 SW 106th, Tigard, OR 97223
- Jean Wirths Scott** (Mrs. Jon) PA Beta, 1186 Cedarwood Drive, Moraga, CA 94556

Officers Emeriti

- Grand President Emeritus**—Marianne Reid Wild (Mrs. Robert) KS Alpha, The Westwood, 5101 Ridgefield Road, Bethesda, MD 20816
- Grand Treasurer Emeritus**—Orpha O'Rourke Coenen (Mrs. Andrew G.) IN Delta, P.O. Box 8, Little Chute, WI 54140

Grand Council

- Grand President**—Carolyn Helman Lichtenberg (Mrs. Joseph M.) NC Alpha, 6512 Anna Maria Court, McLean, VA 22101
- Grand Vice President of Collegians**—Jo Ann Minor Roderick (Mrs. M. W.) OK Beta, 701 Roderick, Stillwater, OK 74074
- Grand Vice President of Alumnae**—Sara Shipley Bowers (Mrs. Donald S.) NC Alpha, P.O. Box 10177, Fort Smith, AR 72917
- Grand Vice President of Philanthropies**—Adrienne Hiscox Mitchell (Mrs. Bruce T.) KS Alpha, 165 Redwood Drive Hillsborough, CA 94010
- Grand Vice President of Membership**—Carolyn Pavletich Lesh (Mrs. Larry M.) TX Delta, #1 Forest Park, Richardson, TX 75080
- Grand Secretary**—Beth van Maanen Beatty (Mrs. C. C.) TX Gamma, 1506 San Sebastian Lane, Nassau Bay, TX 77058
- Grand Treasurer**—Carol Inge Warren (Mrs. Richard J.) NC Beta, 5439 Cascade Drive, Lisle, IL 60532

Directors

- Director of Academic Standards**—Ann Warmack Brookshire (Mrs. Brad) TX Beta, 820 Mallory Court, Tyler, TX 75703
- Director of Alumnae Activities**—Kay Cross Baker (Mrs. Michael) IN Gamma, 27 Cedar Hill Road, Easton, CT 06612
- Director of Alumnae Advisory Committees**—Sarah Ruth Mullis (Miss) SC Alpha, 10 Kings Tavern Place, Atlanta, GA 30318
- Director of Alumnae Extension**—Janet Blume Hamilton (Mrs. A. R.) IN Zeta, 20 Heritage Lane, Stamford, CT 06903

- Director of Alumnae Records**—Sara Wareham Waggoner (Mrs. D. D.) WI Alpha, 3223 Hartford Road, Orange, CA 92669
- Director of Chapter House Corporations**—Lou Ann Montgomery Carter (Mrs. William B.) OK Alpha, Box 3925, 8 Barbary Lane, Wilmington, DE 19807
- Director of Collegiate Extension**—Carolyn Cromb Brada (Mrs. Donald R.) KS Alpha, 52 Mission Road, Wichita, KS 67207
- Director of Membership**—Betty Blades Lofton (Mrs. T. M.) IN Gamma, 9060 Pickwick Drive, Indianapolis, IN 46260
- Director of Pledge Development**—Sheila Consaul (Miss) IL Theta, P.O. Box 18003, Washington, D.C. 20036
- Director of Rush**—Gayla Velvin Ferree (Mrs. Charles) OK Alpha, 3413 Acorn Run, Fort Worth, TX 76109
- Director of Undergraduate Programming**—Sheila Graham Sherman (Mrs. Robert) IL Theta, 804 White Willow Bay, Palatine, IL 60067

Appointed National Officers

- Editor of The ARROW**—Jennifer Moeller Barcus (Mrs. C. Blaine) MO Alpha, Pi Beta Phi Central Office, 7730 Carondelet, Suite 333, St. Louis, MO 63105
- National Panhellenic Conference Delegate**—Jean Wirths Scott (Mrs. Jon) Moraga, 1186 Cedarwood Drive, Moraga, CA 94556
- National Fraternity Historian**—Barbara Sands Olsen (Mrs. James C.) IL Zeta, 30965 Clinton, Bay Village, OH 44140
- Supervisor of Chapter Histories**—Wynne Cook Klenner TN Alpha, 409 Chestnut Street, Suite 102, Chattanooga, TN 37402
- National Convention Coordinator**—Mary Kahlenberg Schroeder (Mrs. Alan) IL Epsilon, 4284 Woodland Shadows Place, Santa Rosa, CA 95404
- Assistant National Convention Coordinator**—Jerelyn Wright Biehler (Mrs. Sean) CA Delta, 1833 Tustin Street, San Diego, CA 92106
- Elections Coordinator**—Janet Goode Durham (Mrs. J. M.) WI Gamma, 10512 Cochise Avenue, Scottsdale, AZ 85258
- National Archivist**—Annette Mitchell Mills (Mrs. Jack P.) 2128 Vestridge Drive, Birmingham, AL 35216
- Parliamentarian**—Janice Shrader Mossman (Mrs. David W.) NE Beta, 1211 North 126 St., Omaha, NE 68154
- Graduate Consultant Coordinator**—Cirelda Barnard Mills (Mrs. A. J., Jr.) OK Alpha 1985 Stoney Hill Road, Boulder, CO 80303
- Supervisor of Province Coordinators**—Patricia Friend Cooke (Mrs. William W.) 23832 140th SE, Kent, WA 98042
- Assistant to the Grand Treasurer**—Maurine Hager Jones (Mrs. K. C.) 4308 Oakridge Drive, Midland, MI 48640

- Regional Chapter Support Officers**—Joanne MaGirl Arnold (Mrs. Donald R.) TX Beta, 32640 Spinnaker Drive, Avon Lake, OH 44012 AND Elizabeth Jordan Holman (Mrs. Calvin) AZ Alpha, 9225 North 53rd Place, Paradise Valley, AZ 85253 AND Linda Burrows Priest (Mrs. J.R.) OK Beta, 203 East 11th Street, Pawhuska, OK 74056

Pi Beta Phi Central Office

- 7730 Carondelet, Suite 333, St. Louis, MO 63105, 314/727-7338, FAX. 314/727-8049
- Executive Director**—Virginia Bland Fry (Mrs. Hugh L.) TN Beta
- Controller**—Lee Ulrich
- Communications Coordinator**—Jennifer Moeller Barcus (Mrs. C. Blaine) MO Alpha

Special Officers

- Traveling Graduate Consultants**—Julie Jacobson, Lisa Gregg, Noel Sparkman, Shannon Strain
- Resident Graduate Consultants**—Krista Belt, OH Iota; Kristin Browning, AZ Gamma; Wendi Littell, CT Beta, Tracy Nevill, AL Alpha; Nealie Pidcock, PA Theta; Salli Preston, NJ Alpha; Missy Smith, WI Delta

Pi Beta Phi Foundation

- President**—Ann Dudgeon Phy (Mrs. Paul W.) TX Alpha, 4408 Lorraine, Dallas TX 75205

National Board of Trustee Funds

- Chairman**—Carol Inge Warren (Mrs. Richard J.) NC Beta, 5439 Cascade Drive, Lisle IL 60532

Fraternity Insurance Representatives

- Property and Liability Insurance**—Corbin-Gillespie Agency, 1592 Conner St., P.O. Box 190, Noblesville, IN 46060
- Group Hospital Indemnity Plan Insurance**—Insurance Administrators Co., 216 N. 11th St., Lincoln, NE 68508

Arrowcraft, Inc.

- Arrowcraft Shop**—576 Parkway Gatlinburg, TN 37738 1-800-336-1096
- Board of Directors President**—Lucy Baker Warner (Mrs. John R.) 21222 Benders Avenue, Rocky River, OH 44116
- Arrowcraft Manager**—Mary Dale Swan
- Pi Phi Express Manager**—Marilyn Hover Cecil

Arrowmont

Arrowmont School of Arts & Crafts, Box 567, Gatlinburg, TN 37738, 615/436-4411

Director, Arrowmont School of Arts and Crafts— Sandra Blain, Arrowmont, Box 567, Gatlinburg, TN 37738

Pi Beta Phi Settlement School Board of Governors Chairman— Barbara Anderson Gates (Mrs. C. A.) 5233 East 70th St., Indianapolis, IN 46220

Holt House

402 East 1st Avenue, Monmouth, IL 61462

Hostess— Margaret Bowker Cooper (Mrs.)

Hours: 10:00 A.M. to 12 noon and 2:00 P.M. to 4:00 P.M. weekdays. By appointment Saturdays, Sundays and holidays.

Standing Committees

Alumnae Committee for Continuing Education Chairman— Lisa Gamel (Miss), 3025 Van Ness Ave., #9, San Francisco, CA 94109

Budget and Finance Committee

Chairman— Carol Inge Warren (Mrs. Richard J.) 5439 Cascade Dr., Lisle, IL 60532

Canadian Philanthropies Committee

Chairman— Helen Steeves Jull (Mrs.) 1318 Quebec Ave. SW, Calgary, AB T2T 1G2, CANADA

Collegiate Scholarship Committee

Chairman— Beth Van Maanen Beatty (Mrs. C.C.) 1506 San Sebastian Lane, Nassau Bay, TX 77058

Convention Committee Chairman

Martha Wohler Bickel (Mrs. F. Gilbert III) 30 Huntleigh Woods, St. Louis, MO 63131

Emma Harper Turner Memorial Fund

Committee Chairman— Evelyn Peters Kyle (Mrs. Stanley) 23 Oak Knoll Gardens, Pasadena, CA 91106

Extension Committee Chairman

Dee Dee Williams Brown (Mrs. Sidney) 9258 Lawndale, Evanston, IL 60203

Fellowship Committee Chairman

Robin Vogel (Miss) 50 Meredith Lane, Stamford, CT 06903

Holt House Committee Chairman

Anne Travis O'Connell (Mrs. Robert F.) 11 Homewood, St. Louis, MO 63122

House Director Committee Chairman

Lou Ann Montgomery Carter (Mrs. William B.) Box 3925, 8 Barberry Lane, Wilmington, DE 19807

Legislative Committee Chairman

Jan Kinnune Hillesland (Mrs. Kent L.) 882 Camino Ricardo, Moraga, CA 94556

Literacy Committee Chairman

Casey Healey Killblane, 4020 Thomas St., Oceanside, CA 92058

Literacy Committee Club/Chapter

Program Development Chairman— Jean Egmon, 17 W 718 Butterfield, Apt. #103, Oakbrook Terrace, IL 60181

Loan Fund Committee Chairman

Joan McBain Stettler (Mrs. Wayne D.) 16 Huron Dr., Chatham, NJ 07928

Music Committee Chairman

Linda Hooper Wassberg (Mrs. James) 6101 Howe Dr., Fairway, KS 66205

Nominating Committee Chairman

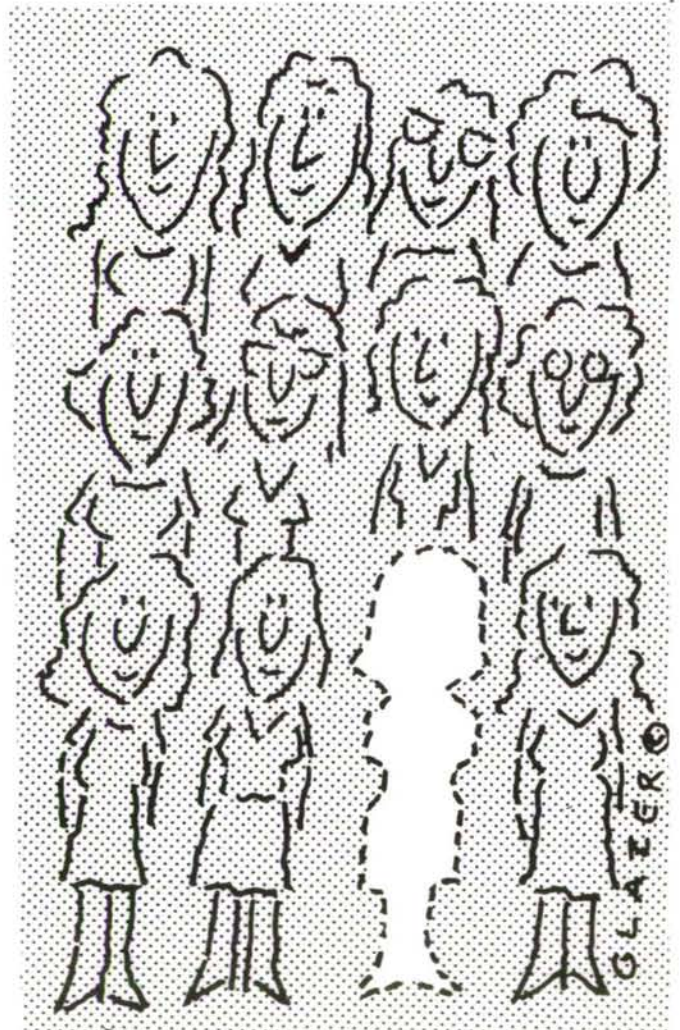
Barbara Varner Frizell (Mrs. E. E. II) 2609 Heather Parkway, Hutchinson, KS 67502

Have We Missed You?

All Pi Beta Phi Fraternity alumnae were recently notified of our upcoming new Alumnae Directory and asked for their input. If you have not already done so, please return your questionnaire today. This will ensure that your personal information will be accurately included in this great new reference book.

Within 2 to 3 months the verification phase of this project will begin. Alumnae will be receiving a telephone call from Harris Publishing Company, the official publisher of our Directory. Please give the representative who calls you a few moments of your time to verify your listing. To place a reservation for a copy of the Pi Beta Phi Fraternity Directory, please advise the Harris Representative during the conversation, since this will be the only opportunity alumnae will have to order the book.

Scheduled for release in late 1991, the Pi Beta Phi Fraternity Alumnae Directory promises to be the definitive reference to over 98,000 of our alumnae. Don't miss the opportunity to be part of it!



Pi Phi

EXPRESS SM



- L. Umbrella.** Fight April showers the Pi Phi way. N169 \$14.50
- M. Bookbag,** beige canvas with wine Pi Phi repeat pattern. N167 \$9.00
- N. Doorknob sign.** Choose studying or sleeping. N168 \$3.00
- O. Acrylic clock** with arrow and Pi Beta Phi on face. N156 \$28.00
- P. Loopy hair bow,** wine, blue and white on barett N157 \$12.00
- Q. T-Shirt ring,** wine, blue and white. N158 \$10.00
- R. New playing cards,** burgundy and white. N155 \$5.00
- S. 4" X 6" frame** with crest and Pi Beta Phi. F115 \$5.00



- T. White pullover** cotton poplin shirt with wine arrows. L, XL. T121 \$25.00
- U. "Alum" T-shirt** yoked with wine arrows. L, XL. T120 \$20.00

- A. Pink Tee** with athletic dept. design in navy. L, XL. T125 \$15.00
- B. Navy nylon running shorts** with white letters. S, M, L, XL. SH111 \$11.50
- C. Gray athletic dept. design T-shirt.** L, XL. T116 \$15.00
- D. Russell gray athletic shorts** with navy πβφ. S, M, L, XL. SH110 \$11.50
- E. Kelly Green Tee** with athletic dept. design in navy. L, XL. T124 \$15.00
- F. Navy shorts** with green πβφ letters available. S, M, L, XL. SH112 \$11.50

- G. Nylon πβφ banner.** 20" X 30" N160 \$14.00
- H. Squeeze bottle.** N171 \$3.50
- I. White plastic mug** with burgundy repeat Pi Phi. N154 \$5.50
- J. White ceramic mug** with burgundy Pi Beta Phi. N153 \$6.00
- K. Tumbler.** N170 \$2.00

Sportswear



A. Unlined navy pullover windbreaker with white $\pi\beta\phi$. L, XL. SW125 \$25.00

B. Peach T-shirt with navy and peach paisley letters. L, XL. T123 \$16.00

C. Navy T-shirt with white script Pi Phi. L, XL. T126 \$14.00

D. Mint green T-shirt with $\pi\beta\phi$ letters in purple paisley. L, XL. T122 \$16.00



J. New tennis socks, white with blue stripe and Pi Phi. SK117 \$3.50

K. Burgundy tennis socks with blue stripe and angel. SK112 \$4.75

L. White tennis socks with blue stripe and burgundy angel. SK115 \$3.50

M. White tennis socks with blue stripe and burgundy arrow. SK114 \$3.50

N. Blue tennis socks with burgundy stripe and angel. SK113 \$4.75

O. White tennis socks with blue stripe and burgundy $\pi\beta\phi$. SK116 \$3.50

P. Bucket and lid. N172 \$4.75



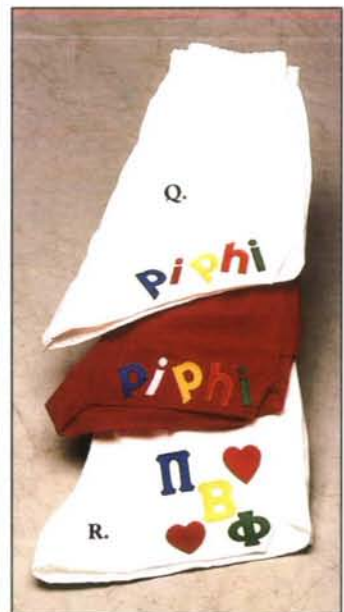
E. Show your back in our Pi Phi T-shirt in primary colors. L, XL. T118 \$12.00

F. Pi Phi facts T-shirt. Show your Pi Phi pride! L, XL. T127 \$14.00

G. Thistle arrow and angel T-shirt. L, XL. T115 \$16.00

H. Buttons and bows Pi Phi T-shirt. Buttons and bows attached with velcro. L, XL. T119 \$16.00

I. White and blue striped 100% cotton shorts by Gavin. S, M, L, XL. SH113 \$11.00

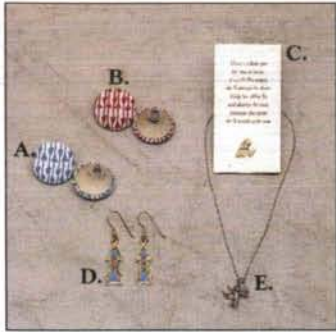


Q. Cotton gym shorts with Pi Phi. Choose red or white. S, M, L, XL. SH103 \$17.00

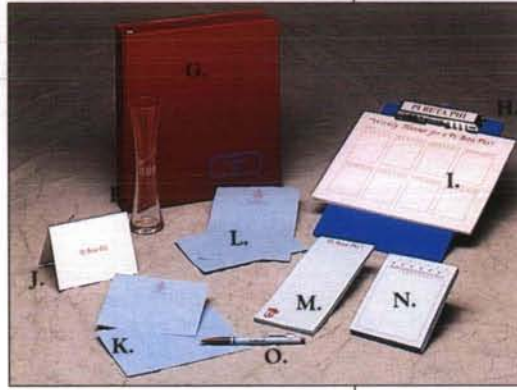
R. Tic Tac Toe look cotton gym shorts. In white only. S, M, L, XL. SH114 \$17.00

Call Pi Phi Express at 1-800 336-1096 to place your order today.

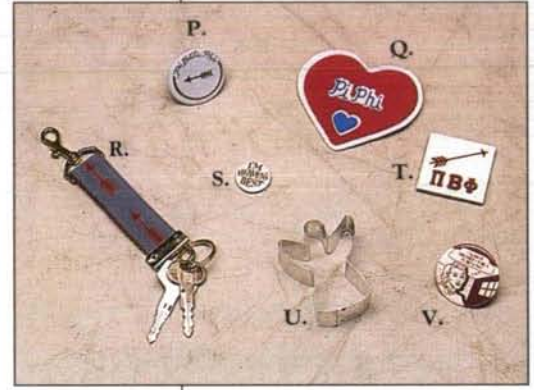
Gifts and Sundries



- A. Fabric covered earrings** with arrows in blue. J109 \$10.00
- B. Fabric covered earrings** with arrows in wine. J110 \$10.00
- C. Goldtone angel** with poem. J111 \$5.00
- D. Enamel arrow earrings** with $\pi\beta\phi$. J112 \$12.00
- E. Small angel** holding arrow charm. Chain not included. J108 \$6.50



- F. Bud vase with arrow** and $\pi\beta\phi$. Perfect for Mom! N159 \$6.50
- G. Ring binder notebook**, wine with blue Pi Beta Phi. S115 \$9.50
- H. Blue clipboard** with Pi Beta Phi on holder. S118 \$13.00
- I. Weekly planner tablet** for the busy Pi Phi. DP104 \$3.95
- J. Informal notes** of white with wine Pi Beta Phi. Includes envelopes. S122 \$4.50
- K. Crest notecards** with envelopes. S116 \$6.00
- L. Crest stationery** with envelopes. S117 \$6.00
- M. Blue slim line notepad** with carnation. S121 \$2.25



- N. Blue notepad with arrows** and Pi Beta Phi top border. S120 \$3.50
- O. Ballpoint pen** in wine and blue with Pi Beta Phi. S119 \$2.25
- P. Pi Beta Phi button** with arrow. N164 \$1.00
- Q. Large heart shaped button** with Pi Phi. N162 \$1.25
- R. Grosgrain ribbon** with arrow keychain. K106 \$6.00
- S. Mini button** "I'm heaven's best." Great pledge button! N165 3 for \$1.00
- T. Magnet**, arrow with $\pi\beta\phi$. N166 \$2.00
- U. Angel cookie cutter**. N161 \$1.00
- V. Button** "I always dreamed I'd be a Pi Beta Phi." N163 \$1.25

Name _____ Daytime Phone _____

Address* _____ City _____ State _____ Zip _____

*If different shipping address is desired, please enclose a note with that address.

	PAGE	ITEM NUMBER	DESCRIPTION	ITEM COLOR	TWILL LETTER COLOR	SIZE	QUANTITY	ITEM PRICE	TOTAL
Shipping and Handling Charges:									
\$10.00 and under	\$2.50								
\$10.01-\$25.00	\$4.00								
\$25.01-\$50.00	\$5.00								
\$50.01-\$100.00	\$6.50								
Over \$100.00	\$8.00								
Each additional \$100.00, add \$6.50 per \$100.00									
METHOD OF PAYMENT							Subtotal		
<input type="checkbox"/> CHECK <input type="checkbox"/> VISA <input type="checkbox"/> MASTERCARD Minimum charge card order \$25.00			Card Number		Expiration Date		TN Residents add 7.75% sales tax		
			Signature				Shipping & Handling		
							TOTAL AMOUNT		

Make checks payable to: Pi Phi Express. Phone orders accepted 9-5 EST, Mon-Fri 1-800-336-1096. Allow 2-3 weeks for delivery unless otherwise specified. All orders shipped UPS unless otherwise specified. Our merchandise is unconditionally guaranteed. All prices in U.S. dollars.

**Send completed form and payment to:
PI PHI EXPRESS, 576 PARKWAY, GATLINBURG, TN 37738**

Profiles

The frail elderly lady smiled as she turned the pages of her younger years. The photo album, with its leather cover crumbling onto her skirt, houses some of her memories of Franklin College and Pi Beta Phi.

From playing piano in chapel every day to digging up dandelions in the spring, Mrs. Mabel Toombs Stevenson, 100, still holds Franklin near to her heart.

The oldest living Franklin College graduate and Indiana Alpha alumna, when asked to recall her college days 76 years ago, smiled as she fondly remembered friends from the past.

Sitting in the parlor of her apartment that looks like a miniature of a rambling Victorian home, she giggled as she remembered gossip and moments long ago. But mostly she remembers her friends and family.

A member of Pi Beta Phi Fraternity, she once dated and was later engaged to Clarence Hall, a Phi Delta Theta man.

A scene of the 1910s flashed back when she saw photographs of her best friend and sorority sister, Martha Ott Pulliam, and a few other Pi Phis.

"Mattie," as Mrs. Stevenson fondly calls her best friend, later became Vice President Dan Quayle's grandmother. Quayle occasionally comes to visit his grandmother, who lives in the Methodist Home in Franklin.

Her family remained very important during her college years.

Born in Scottsburg, Ind., her family moved to Franklin when she was in the eighth grade. The family farm, long gone, sat just northeast of the college. She spoke quickly as memories of the three-acre strawberry field came to her. Every year at graduation dinner, she said, the plump berries sprinkled with powdered sugar lined desert plates.

Getting an education was not a question at the Toombs' household, neither was deciding which college to attend.

"It's the only college I'd ever known. It was small. We were more like a big family," she said. "When you leave, it becomes more precious. I still just love it."

The last time she was on campus was in 1969. She had wanted to return to Franklin in 1988 when Indiana Alpha celebrated its centennial



Mabel Toombs Stevenson, Indiana Alpha.

anniversary at Franklin, but she felt the six hour drive would be too hard for her.

Mrs. Stevenson's sorority played a big part in her undergraduate years. She wore the tiny Pi Phi pin, lined with pearls, on her blue and pink knit suit. She wasn't able to afford diamonds, she said good naturedly.

Having only sons, she wasn't able to pass along her active pin to a daughter. She waited patiently until her granddaughter Julie went away to Miami University in Oxford, Ohio. She sent a letter to the Pi Phi chapter members at Miami, telling them how much Pi Phi still means to her and how much she wanted her granddaughter to be a Pi Phi too.

It broke her heart when Julie decided not to pledge a sorority.



Mabel, back left, with friends in her college years at Franklin College. Mary McClain, in front, is also an Indiana Alpha.

"Maybe I can give it to my great-granddaughter."

Friendship crossed over sorority and fraternity lines, she said. Many of her friends were in Alpha Gamma, which later became Delta Delta Delta sorority.

"There was no sharp division that I can remember at all. We had just as close friends in the independents as perhaps in the sororities," she said.

She has kept up her friendships through the year, and was saddened to hear the news of her best friend, Mrs. Pulliam's, failing health. She and Mrs. Pulliam are among the only remaining graduates of the class of 1914 and both share the bonds of Pi Beta Phi.

Mrs. Stevenson, 100 years old, doesn't let her age stop her. She still climbs the stairs that lead to her second-floor apartment.

"I've had problems with my little old ticker, but I snap out of it. Like the old ball, I bounce back," she said.

After leaving Franklin, Mrs. Stevenson taught school for four years in Illinois. She met her husband, Gerald Stevenson, at her first school, but they didn't fall in love right away.

That took several years and a move back to Indiana. Meanwhile, she and Clarence Hall had broken up and she met another man. She was engaged to the second man when she met Gerald. "I knew I hadn't chosen the right one," she said. Sitting next to Gerald by Lake Michigan she took off her "beau's" ring. Soon she and Gerald were married.

The white-haired mother of two sons and grandmother of three, lives alone above her son's office. He, like his father, is a doctor.

Her son buys her groceries, and a grandson, who lives in the basement of the building, tends her garden. She quit gardening just three years ago when she experienced heart problems.

She attributes her long life to "good genes" and two good doctors — her husband and her son. Also, positive thinking has carried her through life.

"You can do so much for yourself by thinking positively," she said. "There's always a bright side and a dark side. Why look at the dark side? I am sure that's why I am here."

by Janet Straughn

Announcements

Scholarships

Arrowmont School of Arts and Crafts is offering summer scholarships and assistantship programs. Scholarships are available to Pi Phis for one or two week classes. Scholarships are granted on the basis of financial need.

Assistantships are available to students who can be in residence at the school for five weeks and who have a strong background in a particular medium. This is a work or class exchange program.

A work study program for five or ten weeks will allow students who have a food service interest or background to work in exchange for classes.

For more information on these programs contact Arrowmont School of Arts and Crafts, P.O. Box 567, Gatlinburg, TN 37738.

The Philadelphia Alumnae Panhellenic will award a \$500.00 scholarship to a fraternity woman doing graduate work at a college or university in the five county (Philadelphia, Delaware, Montgomery, Chester, or Bucks) Philadelphia, Pennsylvania area during the 1991-92 academic year. Those interested should request an application from Krista L. Killan, 1020 Beaumont Road, Berwyn, PA 19312. Applications must be postmarked before August 15, 1991.

Elections

At the 1991 Convention, members of Grand Council and Fraternity Directors will be elected to serve two-year terms of office.

During the spring, all chapters and alumnae clubs will receive forms to be used in making recommendations for these offices. The Nominating Committee requests that your recommendation forms be completed and returned, as directed, prior to convention.

Individuals are invited to send letters of recommendation for Fraternity officers to the Nominating Committee Chairman Mrs. E. E. Frizell, 2609 Heather Parkway, Hutchinson, KS 67502, no later than May 1, 1991.

New Club

A new alumnae club of Pi Beta Phi has been chartered. The club is named the Southern Illinois Alumnae Club and includes Carbondale, DuQuoin, Chester, Herrin and Cairo and other small towns in southern Illinois. The club is located in the Xi alumnae province.

Centennial Celebration

Louisiana Alpha will celebrate its 100th anniversary the weekend of October 12-13, 1991 in New Orleans. All alumnae of Newcomb College-Tulane University should mark their calendars for this festive event.

Rush Videos Available

Attention all Pi Phi chapters! Do you need assistance planning rush parties? Are you tired of using the same old skit and doing the same old song and dance? Pi Beta Phi's Director of Rush can solve your problems with her new rush videos. For only \$10.00 you can purchase either Rush 1990 or Rush 1990-91. Each tape contains a variety of skits and rotation exercises.

If you don't want to change your theme but want to update or add a fresh approach to an existing skit, Pi Phi can lend further assistance. We have combined several versions of our most popular rush themes and skits on one tape. Themes include:

- Pi Phi Through the Ages
- Grease
- Jungle theme
- Wizard of Oz
- Willie Wonka and the Sorority Factory

Each tape sells for \$7.50. For more information contact the Director of Rush:

Gayla Velvin Ferree
3431 Acorn Run
Fort Worth, TX 76109

Help your chapter perform polished and professional rush skits by viewing Pi Phi's rush videos



ARROWCRAFT → The Pi Beta Phi Shop ←

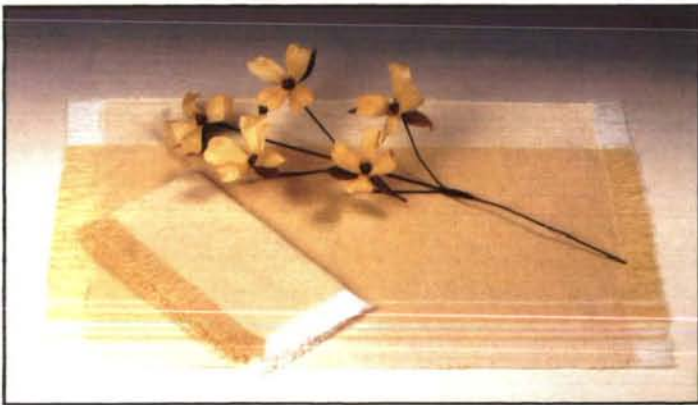
New from the Looms
of Arrowcraft Weavers.



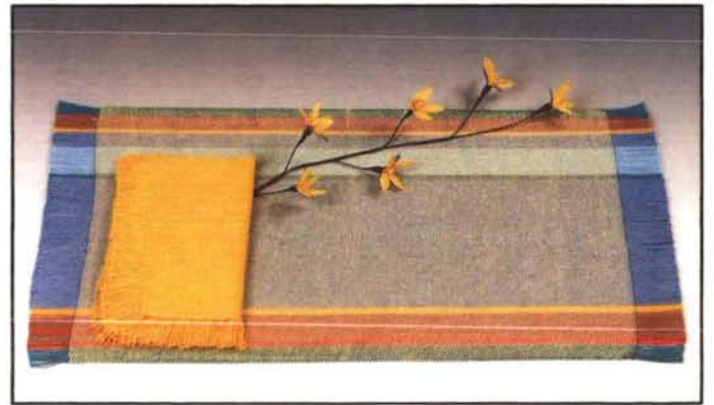
#1 Trillium Mat, #2 Napkin



#3 Stripe Tote, #4 Super Stripe Tote, #5 Daffodil



#6 Butternut Mat, #7 Napkin, #8 Dogwood Spray



#9 Strawflower Mat, #10 Napkin, #11 Forsythia



ARROWCRAFT SHOP
REGIONAL HANDICRAFTS
TRADITIONAL AND CONTEMPORARY
576 Parkway
Gatlinburg, TN 37738

Celebrating 65 Years
1991

Telephone Orders Welcomed
M-F 8:30 - 5:00 Eastern Standard Time
No Orders Saturday, Please
1-800-336-1096 or 615/436-4604

Name _____
Address _____
City/State _____
Daytime Phone _____
PAYMENT BY: (Check One, Please)
 ENCLOSED CHECK MC VISA
Expiration Date _____
Card Number _____
Signature _____
Special Instructions _____

QTY	DESCRIPTION OF ITEM	COST EACH	TOTAL
	#1 Trillium Mat Cotton/Ray Nubs of Mauve/Grey/Black on White	6.50	
	#2 Fringed Napkin Cotton	3.50	
	#3 Pastel Stripe Tote Cotton \$14 / #4 Super Tote \$24		
	#5 Daffodil of Corn Husk	4.50	
	#6 Butternut Mat Polyester Natural/White	5.50	
	#7 Polyester Napkin Fringed Natural/White	3.75	
	#8 Dogwood Spray of Corn Husk White Only	9.00	
	#9 Strawflower Mat Cotton Multi Color	6.00	
	#10 Fringed Napkin Cotton Yellow	3.50	
	#11 Forsythia Spray of Corn Husk	9.00	
	Merchandise Total		
	Shipping (See Chart)		
	TN Residents Add 7 1/2% Tax		
	TOTAL AMOUNT		

RUNNERS MAY BE ORDERED IN
PLACEMAT DESIGNS WHEN DESIGN
ON LOOM. PRICES IN AD GOOD
THROUGH MAY.

SHIPPING RATES: (All orders shipped UPS unless otherwise specified.)
Up to \$10.00, \$2.50; \$10.01 up to \$25.00, \$4.00; \$25.01 up to \$50.00, \$5.00;
\$50.01 up to \$100.00, \$6.50; Over \$100.00, \$8.00. Out of Continental United
States and Oversize Items, Actual Shipping Charges.

Dear Editor

I am writing to applaud your recent article and profile of Carrie Lane Chapman Catt in the winter issue of *The ARROW*. It is so refreshing to read about successful past endeavors which come alive through vivid accounts of history. This inspiring profile makes me more aware of the courage and determination that women used to face issues only 70 years ago. The article further emphasized the fact that one person can make a difference in society and change the course of world events.

In addition, Mrs. Bush's letter of recognition, appreciation and encouragement added a special touch to your already interesting magazine. Great job!

Theresa Lynn Baker
Virginia Gamma
Williamsburg, VA

This past year our lives have been touched by a California Delta Pi Phi. Her name is Debbie Kaste. She is a senior at UCLA studying pre-law and will be attending law school in the fall of 1991.

We were in need of child care for our two year old son Bryan this past summer. We live in the Los Angeles area and posted a notice on the job board at the Pi Phi house at UCLA. We felt very fortunate to have Debbie respond to the job notice even though she was at that time interning at the criminal courts division of the Los Angeles city attorney's office. Debbie successfully balanced her time requirements for her internship and our child care need. Thus, both Debbie and our household felt that this Pi Phi association provided an ideal situation for everyone involved.

We love her very much, and she

has become a very important part of our family. Bryan adores her, and so do my husband and myself. If it weren't for the Pi Beta Phi connection, we never would have been touched by her. I thought it would be interesting for other Pi Phis to read about how the sorority has continued to benefit and enrich my life even after all these years.

Christie Mossman Houser
Colorado Gamma
Hollywood, CA

Editor's note: This is your page made available to anyone wishing to comment on articles, the magazine or any topic of interest to our readers. Letters must be signed with full name, address and chapter. We reserve the right to edit as needed to space requirements and content.

HAVE YOU MOVED OR CHANGED YOUR NAME?

Mail this slip to Pi Beta Phi Central Office
7730 Carondelet, Suite 333
St. Louis, MO 63105

(Please leave label on reverse side when mailing this form.)

NAME IF DIFFERENT FROM ATTACHED LABEL _____

MAIDEN NAME _____

FORMER MARRIED NAME (if applicable) _____

OLD ADDRESS _____

Street

City

State

Zip

NEW ADDRESS _____

Street

City

State

Zip

CHAPTER _____ YEAR OF INITIATION _____

If you are currently an officer in the Fraternity, please check below and give title so that we may also update our officer lists.

National _____ Province _____ Alumnae Club _____

AAC _____ House Corp _____ Other _____



PI BETA PHI JEWELRY

Symbolizing Your Desire for Excellence

Pi Beta Phi Jewelry Order Form

Size	Style #	Description and Quality	Unit Price
_____	3047B	Pi Beta Phi Arrow Ring 10K Available in sizes 4-8	\$129.00
_____	3360B	Angel Band With Crest 10K Available in sizes 4-8	\$148.00
_____	3033RB	Small Oval Raised Letters Ring 10K Available in sizes 3-8	\$115.00
_____	3510B	One Piece Letter Ring 10K Available in sizes 3-7	\$ 99.00
Qty.			
_____	26047B	Large Lavalier 10K	\$ 29.00
_____	19258B	Small Lavalier 10K	\$ 22.00
_____	26063B	Large Arrow Pendant/Charm 10K	\$ 44.00
_____	26011B	Small Arrow Pendant/Charm 10K	\$ 24.00
_____	CH-93	Florentine Filigree Charm W/Crest G.F.	\$ 28.00
_____	20661	Oval Pin Box With Crest	\$ 16.00
_____	29245	Gold Cross Pen/Pencil Set W/Crest	\$ 79.00
Chains are additional:			
_____	1117C	18" Curb Link Chain G.F.	\$ 10.00

Chapter Checks or Money Orders Required For Collegiate Orders

Personal Checks or Money Orders Required For Alumnae And/Or Parent Orders

SUBTOTAL	\$
MO RESIDENTS ONLY SALES TAX 5.75 %	\$
SHIPPING AND HANDLING	\$ 3.00
TOTAL	\$

Balfour Provides a Full Lifetime Warranty On All Products Shown.

Please allow 2-4 Weeks Delivery Time From Receipt of Your Order in Central Office.

Balfour
A Town & Country Company

Send Check or Money Order Payable to Pi Beta Phi.

Mail To: Pi Beta Phi Central Office
7730 Carondelet, Suite 333
St. Louis, MO 63105

UPS SHIPPING ADDRESS:

Your Name _____

Address _____

City _____ State _____ Zip _____

Daytime Phone () _____

Chapter Name _____

Initiation Year _____

HOW TO MEASURE YOUR FINGER FOR RINGS
Wrap a piece of paper around the part of your finger where the ring is worn. Cut off paper where ends meet. Lay paper on chart at point "A". If paper ends between two sides, order the next larger size.



To Pi Phi Parents:

Your daughter's magazine is sent to her home address while she is in college and we hope that you enjoy reading it. If she is no longer in college, however, and is not living at home please send her new permanent address to Pi Beta Phi Central Office, 7730 Carondelet, Suite 333, St. Louis, Missouri 63105.

Postmaster:

Send notice of undeliverable copies on Form 3579 to Pi Beta Phi, 7730 Carondelet, Suite 333, St. Louis, MO 63105.