

The **Arrow** OF PI BETA PHI

A Trailblazing Good Time!

Convention 2009 Page 4

State of the
Fraternity Page 11



Welcome to a new Biennium

To me, there are two dimensions to leadership: “what” you do and “how” you do it. As your new grand president, I would like to share my philosophy about leadership and my role in leading our Fraternity.



MARY LOY TATUM
Grand President
Oklahoma Beta
Oklahoma State University

Here are the three areas I envision for “what” needs to be accomplished:

Communication. There is a great need for communication to and from our membership. Our Fraternity moves very quickly on many fronts, and this forward movement contributes greatly to our vision of being recognized as a premier organization for women. However, the foundation for change must meet a variety of members’ needs. To learn more about these needs, the leadership team will solicit and utilize input from you, our members. Grand Council will do their best to effectively communicate with the membership.

Seamless Membership. For too long, our Fraternity has viewed our membership as two separate segments — collegiate and alumnae. The chapter experience is a vital foundation for what we know is a lifelong experience as a member of Pi Beta Phi, but it is only four years out of that lifetime of sisterhood. We will work to find ways for collegians and alumnae to share even more experiences, such as philanthropic work and programming. The lines between the two segments will dissolve, and we will begin to function as one membership joined together in a sense of purpose. We will also look for new ways for more members to be involved and connected with the Fraternity. Those involvements and connections will look different as lives change, and the opportunities for involvement must reflect that.

Philanthropy. One of the principles upon which Pi Beta Phi was founded is working for the betterment of society. This manifested itself through our initial work to educate the

children of a small community in Appalachia. Today, that original effort has grown into a passion for literacy reaching far more than the children in that Appalachia community. We have the opportunity to make a difference in the lives of millions of children. Through our partnership with First Book®, we have been able to provide thousands of books to needy children. However, I sense many of our members want to make a more personal commitment to improve their communities. Aggressive efforts to identify recipient groups for First Book in local communities is one way to accomplish this, and we will continue to search for additional initiatives to provide ways for members to be more directly involved in our philanthropic efforts.

Now a few words about “how” I will lead. My personal leadership style is to build consensus through influence and the opinions of our members. I am aware the decisions made for Pi Beta Phi are decisions affecting sisters. I will look for ways to make our Fraternity more valuable to all members and at the same time keep us moving forward. A good balance of progress and member concern will result in a healthy, vibrant organization. I will strive to maintain that balance, so we may continue to be recognized as a premier organization for women.

In the Wine and Blue,

A handwritten signature in cursive script that reads "Mary".

MARY LOY TATUM



The OF PI BETA PHI Arrow



Features

- 4 A Trailblazing Good Time: Convention 2009
- 20 Campus Living
- 26 Collegiate Awards
- 38 Alumnae Awards

Departments

- | | |
|------------------------------|-----------------------------|
| 2 From the Editor's Desk | 34 Alumnae News |
| 3 In her Words | 41 Reunions & Anniversaries |
| 11 State of the Fraternity | 42 Arrowmont |
| 15 Are you Linked to Pi Phi? | 44 NPC News |
| 16 Literacy | 45 The "A" List |
| 18 Ask the Webmaster | 46 Fraternity Directory |
| 22 Collegiate News | 48 Pi Phi Express Ad |
| 29 Remember | 50 In Memoriam |
| 30 Foundation | 52 News & Notes |

ON THE COVER: Convention 2009 was a trailblazing good time! Read all about the fun and friendship at the 67th Biennial Convention beginning on Page 4.

The Arrow of Pi Beta Phi is published by Pi Beta Phi Fraternity, 1154 Town & Country Commons Drive, Town & Country, Missouri 63017. POSTMASTER: Send address changes to *The Arrow of Pi Beta Phi*, 1154 Town & Country Commons Drive, Town & Country, Missouri 63017.



Member Fraternity Communications Association

From the Editor's Desk



EDITOR

Jennifer Whittom
editor@pibetaphi.org

EDITORIAL STAFF

Eily Cummings
eily@pibetaphi.org

Juliette Losapio
thearrow@pibetaphi.org

DIRECTOR OF MARKETING & COMMUNICATIONS

Wendy Woolard Drochelma
wendy@pibetaphi.org

COPY DEADLINES

Winter — November 1
Spring — February 1
Summer — May 1
Fall — August 1

PI BETA PHI HEADQUARTERS

1154 Town & Country Commons Drive
Town & Country, Missouri 63017
(636) 256-0680
FAX (636) 256-8095
headquarters@pibetaphi.org
www.pibetaphi.org

PI BETA PHI FRATERNITY

ΠΒΦ

Founded 1867

FOUNDERS

Emma Brownlee Kilgore
Margaret Campbell
Libbie Brook Gaddis
Ada Bruen Grier
Clara Brownlee Hutchinson
Fannie Whitenack Libbey
Rosa Moore
Jennie Nicol, M.D.
Inez Smith Soule
Fannie Thomson
Jennie Horne Turnbull
Nancy Black Wallace

MISSION STATEMENT

The mission of Pi Beta Phi Fraternity for women is to promote friendship, develop women of intellect and integrity, cultivate leadership potential and enrich lives through community service.

Each of us learned how to communicate at a very early age. My husband and I are learning this firsthand from our 2-year-old Pi Phi legacy, Anna. While her innocent view on life makes for great office stories, she is often times brutally honest. She has no qualms telling a friend she needs to leave "right now," that she "doesn't like" a gift from a grandparent or if the dinner I prepared is "disgusting." As many of you know all too well, the terrible twos are a trying time for parents. However, as difficult as it may be to endure, our children's honesty is sometimes a refreshing break from the depersonalized, politically correct style we adults often use. You never question where you stand with a child!

The Headquarters marketing and communications department, together with Grand Council and Executive Director JULI HOLMES WILLEMANN, Iowa Beta, know communication is the key to an informed membership. As part of the Fraternity's strategic plan, communication is a major focus as we begin the 2009-2011 biennium. We are excited to announce our new and improved social media vehicles to help keep our membership informed and up-to-speed on all Fraternity initiatives. Have you checked out our new Pi Phi-only eSisters site or Facebook page? Are you following us on Twitter (read more on Page 15)? Once you connect with us, you will see updates regarding the Fraternity's direction in many areas. You can also log on to eSisters to view the new e-Council Comments and read the business discussed at Grand Council meetings.

No matter how much information is disseminated, communication remains a two-way street. As our new Grand President MARY LOY TATUM expressed in her opening perspective, we want to hear from you, the readers and members of Pi Beta Phi. What do you want to see in our printed pieces and on our Web sites? What will compel you to open your *Arrow* or regularly log on to www.pibetaphi.org? Channel your inner 2-year-old and let us know! Also, be on the lookout for *The Arrow* readership survey coming later this year. Please be sure to update your e-mail address online through eSisters or with Headquarters by December 1, 2009, to receive this important survey. We want to hear what you have to say ... because at the end of the day, maybe a 2-year-old's communication style isn't so terrible after all!

Yours in Pi Phi,

A handwritten signature in cursive script that reads "Wendy".

WENDY WOOLARD DROCHELMA

Missouri Alpha

Director of Marketing and Communications



We look forward to hearing from you. E-mail comments to the editor at editor@pibetaphi.org or mail them to the Pi Beta Phi Headquarters address listed to the left.

Timree Gold

in her words

Artist



World-renowned artist, California Iota **TIMREE GOLD**, captures people's memories and favorite things with her paintbrush.

Her distinct creative concepts and style bring life and charm to any room. Timree graduated from Chico State University with a degree in interior design. She also studied at the American Institute in Aix-en-Provence, France. In college, she painted and personalized dishes to earn additional money. While creating window displays at a local store, she decided to add a personal touch by creating her first line of dishes to display in the windows. After graduation, Timree returned home to Newport Beach, California, and began painting dishes in her neighbor's garage. Her first big break came in 2001 at the Orange County's Junior League Christmas Company, where she sold more than 300 dishes in four days.

In 2004, Timree licensed her artwork to a stationery company that was later nominated for a Louis Award, one of the highest honors in the business. She was selected to paint custom artwork for the 2004 American Music Award's celebrity gift baskets, which she personally presented to the performers, including artists Rod Stewart, Bon Jovi and Snoop Dogg.

By 2006, Timree launched her line of dishes as well as stationery in more than 100 stores nationwide. She has also been featured in *The Knot*. In 2007, she began painting and designing children's rooms. Her biggest project to date was the Venice Film Festival in Italy where she painted for celebrities including George Clooney, Charlize Theron and Richard Gere.

Q: I am most proud of ...

A: creating a business with my art and design that brings sincere joy and happiness to others.

Q: I wish I had more time to ...

A: paint for myself. I am always painting commissioned pieces and never really get a chance to paint something for me.

Q: My biggest challenge in life has been ...

A: being organized. I think it is the artist in me.

Q: The best advice I ever received was ...

A: "focus and finish!"

Q: The heroine I most admire is ...

A: My grandmother. She was an artist who brought so much inspiration, elegance and whimsy to my life.

Q: A life worth living must ...

A: have champagne bubbles and caviar dreams!

Q: My favorite vacation spot is ...

A: either the French Riviera ("ooh la la") or Hawaii.

Q: Even my best friends don't know I ...

A: sometimes eat Top Ramen for breakfast.

Q: How do you balance your work and family life?

A: My family is my "go to" when I need help with my work, which is always. I couldn't do what I do without them — especially my mother.

Pi Phi taught me ...

***"no matter where you are in this world,
you have a HUGE sisterhood of friends!"***



**A TRAILBLAZING
GOOD TIME!**



Pi Phi belt buckles and custom Pi Phi cowboy boots were all the rage when the Lone Star State angels welcomed more than 1,000 Pi Phis and special guests to the Gaylord Texan Resort and Convention Center June 26–30, 2009, for the 67th Biennial Pi Beta Phi Convention.



Washington Gamma JULIE JACOBSON GATES and her husband, Gene, emceed Friday night's dinner with a live broadcast of the "The Gene and Julie Show."

Kicking Things off in Style

The local convention committee, headed by co-chairmen California Delta JANE BONY HEISERMAN and Texas Beta TISH MAULDIN VISINSKY, hosted the opening dinner Friday night. Attendees were treated to a live broadcast of the "The Gene and Julie Show." Washington Gamma JULIE JACOBSON GATES and her husband, Gene, hosted "Texas Trailblazing Tonight" on WPBP. The radio show included call-in segments from members of the audience and live performances by Texas Delta BROOKE PEOPLES and Texas Gamma DONNA CHRISTOPHER INGHAM.

Grand President EMILY RUSSELL TARR, Texas Beta, presented the women from Massachusetts Gamma at Massachusetts Institute of Technology, New York Eta at New York University and Mississippi Gamma at Mississippi State University with their charters at Friday night's General Session.



Convention co-chairman Texas Beta TISH MAULDIN VISINSKY presents Oklahoma Alpha JESSICA FOWLER with her prize for calling into "The Gene and Julie Show" during Friday night's opening dinner.



Collegiate and alumnae attendees visited 15 booths during the Leadership Fair on Monday.

Leadership Fair

During General Session on Monday morning, convention participants were given a passport to attend the afternoon Leadership Fair. Pi Phi's Leadership Fair debuted at the 2007 Convention and was such a success, Pi Beta Phi's Headquarters' staff organized it for a second year. Booths at the Leadership Fair gave both collegians and alumnae the opportunity to learn more about Fraternity heritage, the Foundation, volunteer opportunities, various program initiatives, licensing apparel and much more. At each of the 15 booths attendees received a stamp in their passport. Members entered their stamped passport into a drawing to win a brand-new digital camera.

Sweet Treats

The Fraternity launched its newest cookbook, "Angel Sweets and Arrow Treats ... A Sweet Celebration of the Pi Beta Phi Cookie Shine" during lunch on Saturday. More than 175 tried and true recipes as well as special Cookie Shine memories, from Pi Phi members are included in the cookbook. Grand Vice President Alumnae MARY LOY TATUM, Oklahoma Beta, celebrated the cookbook launch with a custom Pi Beta Phi cupcake hat while hosting the luncheon. Mary also recognized the many legacies in attendance.



A balloon cowboy greeted Leadership Fair attendees.



Grand Vice President Alumnae MARY LOY TATUM, Oklahoma Beta, hosted Saturday's luncheon, which recognized legacies attending convention and celebrated the launch of Pi Beta Phi's newest cookbook, "Angel Sweets and Arrow Treats."





Special thanks to the 2009 Convention Executive Committee. Front row, from left: Kentucky Beta CYNTHIA ARNOLD BOWEN, Texas Beta TISH MAULDIN VISINSKY, California Delta JANE BONY HEISERMAN and California Eta MICHELLE MURRELL WILLBANKS. Back row, from left: Mississippi Beta SHELLEY CARY, Arkansas Alpha AUDREY MILLER PENNINGS, Missouri Gamma HEATHER RANKIN CURTIS, Oklahoma Beta LEIGH ANN TURVEY IHRIG, Texas Alpha LYN ARNOT CLARK and Texas Beta SAM WHITELOCK MAULDIN. Not pictured: Florida Delta KRISTINE KARPENTER MCCORVEY.

Convention Photography

All convention photography was provided by H. Dean Clark of Clark Fine Photography. To view and order your favorite convention photo memories online, visit www.digiproofs.com and enter PBP 2009 as the Guest Password.



Grand President EMILY RUSSEL TARR gave a welcome bag to students from the Irma Rangel Young Women's Leadership School during Monday's General Session.

A Texas-Size Thanks!

What do 29 committee members, seven alumnae clubs and three collegiate chapters have in common? Each and every one helped make the 2009 Convention a fun-filled success. Local committee members and volunteers hosted the opening dinner, stuffed tote bags, pressed chapter banners, greeted attendees at the airport and convention lobby and much more.

Grand Thank-You

On Monday evening, convention attendees paid tribute to four retiring members of Grand Council, past Grand President EMILY RUSSELL TARR, Texas Beta; past Grand Vice President Communications KAREN SHELTON CHEVALIER, California Delta; past Grand Vice President Finance KAREN CONSALUS PRICE, Missouri Alpha and past Grand Vice President Membership LUELLEN CLYMO SMITH, Washington Gamma. Each of these women has served the international Fraternity for many years. These women were instrumental in many Fraternity accomplishments including the creation of the Fraternity brand, development and implementation of the Fraternity's values-based programming, building of Headquarters and numerous collegiate extensions. Their hard work and dedication has proven to be invaluable for the Fraternity.

Literacy

First Book® co-founder and President Kyle Zimmer and surprise guest Kellie Cairns, founder of Book Buddies, a First Book recipient group, spoke at General Session on Monday. Kellie delighted the crowd with touching stories of children receiving brand-new books. Both the Fraternity and Foundation presented First Book with checks totaling \$250,000. Attendees also met First Book's newest recipient group, the Irma Rangel Young Women's Leadership School.

In honor of the 67th Biennial Convention, First Book donated 1,000 books to the Irma Rangel school, 1,000 books to the Child Care Group and an additional 8,000 books to the Dallas United Way.

Educational Opportunities

Convention offered many educational opportunities for attendees. Directors, specialists, international officers and Headquarters employees presented more than 30 workshops and seminars to alumnae and collegiate attendees.

Alumnae and collegiate workshops covered a variety of important topics including the debut of eSisters, leadership and strategic planning for alumnae groups, the “rite” way to perform ceremonies, and paperless collegiate reporting with eReports. Alumnae Advisory Committee members participated in workshops hosted by The Leadership Institute – Women with a Purpose, Inc., while Chapter House Corporation members attended sessions on property management.

On Saturday, Mary Madden, Ph.D., from the University of Maine presented *Hazing in View: A Closer Look at Hazing in Greek Life* to the General Session. Dr. Madden and fellow research associate, Elizabeth Allan, Ph.D., released the findings of their ground breaking study on hazing across college campuses and student groups in March 2008. During her presentation, Dr. Madden discussed the major gap in hazing knowledge that exists and opened the floor to questions from attendees regarding anti-hazing laws and programs and strategies to prevent hazing.

Other convention speakers included Brooks Powell from The Gordie Foundation, Erin Strine and Kyle Witham from The Leadership Institute – Women with Purpose, Inc., authors Mark Levin and Marti Barletta, Stephen Ratterman from Fifth Point Properties, Peggy Dale from Place Properties, Cindy Stellhorn from MJ Insurance and Colleen Coffey from the National Mental Health Awareness Campaign.

Girl Power!

The Pi Beta Phi Foundation hosted keynote speaker Roger Kemp, president of The Ali Kemp Educational Foundation (T.A.K.E.[™]) at Monday morning’s General Session. Roger founded T.A.K.E. Defense after his daughter, Kansas Beta ALI KEMP, was murdered. After Roger’s moving presentation, the Pi Beta Phi Foundation presented T.A.K.E. Defense with a \$10,000 donation. Following general session, T.A.K.E. Director of Curriculum Bob Leiker and Executive Director Jill Leiker led both alumnae and collegians through a comprehensive safety awareness program.



(Top) Dr. Mary Madden presents findings from her study on hazing during Saturday’s General Session.

(Bottom) Alumnae attendees learn more about the debut of eSisters during a workshop on Saturday.



(Top) Roger Kemp, president of The Ali Kemp Educational Foundation (T.A.K.E.[™]), spoke at Monday morning’s General Session.

(Bottom) Collegiate and alumnae convention attendees participated in a hands-on self defense course offered by T.A.K.E. Defense Training.



Pi Beta Phi's 2009–2011 Grand Council. From left, Grand Vice President Programming LINDA NOEL IBSEN, Colorado Beta; Grand Vice President Membership PAULA PACE SHEPHERD, Texas Epsilon; Grand Vice President Collegians SUE KINGSLEY ROBINSON, Missouri Alpha; Grand President MARY LOY TATUM, Oklahoma Beta; Grand Vice President Alumnae CINDY RICE SVEC, Kansas Beta; Grand Vice President Communications DIANE BIELMAN, California Eta; and Grand Vice President Finance RAE WOHLHUETER MAIER, Kentucky Beta.

Convention Business

The business of convention is always an exciting time for convention attendees. The convention body voted on 19 proposals including:

- To include carnation circles and pockets, a proposal amending the verbiage “alumnae club” to “alumnae group” was passed.
- Although the Fraternity Housing Corporation (FHC) was incorporated in 2008, changes were made throughout the statutes for inclusion of the FHC.
- Fifth-year seniors are automatically granted undergraduate alumna status but may still choose to be active members of a collegiate chapter.
- The director finance is now the director finance/housing to more accurately describe the scope of her job.
- A reorganization of the Holt House Committee was approved.
- The creation of the vice president of housing was created for the collegiate structure. This executive council position is only applicable where a residential facility exists.
- The proposed amendment to clarify the duties of Grand Council did not pass.

Elections for seven Grand Council and 18 director positions were held on Saturday. A first-ever challenger’s forum was held Friday afternoon, which offered the challenging candidates the opportunity to address the voting body. On Saturday, poster-size resumés for each candidate were displayed throughout the day. Convention attendees were also able to meet the candidates during a break prior to the elections.



(Left) Ohio Beta ALANA EBERLEIN carries her chapter banner during the banner parade on Saturday night.

(Bottom) California Eta CATHY BIRCH DANIEL picks up her Foundation Tribute Hearts.



From left, First Book co-founder and President Kyle Zimmer hosts the Speed Read championship on Monday. RACHEL HOPE, Arkansas Alpha, prepares to read as leadership development consultant MAUREEN LICURSI, Ohio Beta, keeps track of time.

Special Guests

Longtime *Arrow* Editor MARILYN SIMPSON FORD, Nebraska Beta, attended convention with her husband, Bill. Marilyn was greeted with a standing ovation and bouquet of flowers during Friday night's General Session.

Senator KAY BAILEY HUTCHISON, Texas Alpha; ELINOR TATUM, New York Gamma; and KRISTY WEBER, M.D., Missouri Alpha, were chosen as the 2008 Members of Distinction Award winners. These women were honored for their professionalism, leadership and recognition within their careers. Read more about each of these women on Page 39.

Convention attendees were treated to a special appearance Monday morning from Senator Hutchison, who accepted her Member of Distinction Award. During her acceptance speech, Senator Hutchison recounted stories of reconnecting with Pi Phis throughout her career and expressed the importance of sisterhood and friendship.

The Friends of Distinction Award honors non-members who go above and beyond to support Greek initiatives and are distinguished friends to the Fraternity and to the Greek world. This year, the Fraternity recognized four Friends of Distinction including Pi Beta Phi Elementary School Principal Glenn Bogart, Fraternity legal counsel Tim Burke, T.A.K.E Defense President Roger Kemp and First Book co-founder and President Kyle Zimmer.

The Fraternity welcomed three honor initiates at convention, Ohio Iotas PATRICIA BURKE, TARA BURKE and Texas Beta ALICE FOULTZ.



Check-out more convention highlights, videos and download handouts by visiting www.pibetaphi.org/convention.



Nebraska Beta MARILYN SIMPSON FORD (center) was recognized by the Fraternity for her 21 years of service and dedication as *The Arrow* Editor from 1968–1989.



To view Senator KAY BAILEY HUTCHISON's, Texas Alpha, address to the convention body in its entirety visit the 2009 Convention Web site, www.pibetaphi.org/convention.

Next Stop ... Orlando!

Mark your calendar now, and plan to join us in Orlando, Florida, at the Hilton located in the Walt Disney World® Resort. Let Convention Chairman CINDY STRINGFIELD PROVENCHER, Florida Beta, show you all the magical things Orlando has to offer. See you in 2011!



State of the Fraternity

The State of the Fraternity report evaluates Pi Beta Phi's fiscal year, July 1, 2008–June 30, 2009. Its purpose is to keep the membership informed on Fraternity business and to provide a brief overview of the year.

2008–2009

GRAND COUNCIL

Grand President

Emily Russell Tarr

Grand Vice President Collegians

Sue Kingsley Robinson

Grand Vice President Alumnae

Mary Loy Tatum

Grand Vice President Communications

Karen Shelton Chevalier

Grand Vice President Finance

Karen Consalus Price

Grand Vice President Membership

Luellen Clymo Smith

Grand Vice President Programming

Linda Noel Ibsen

Membership Numbers

During the 2008–2009 academic year, the Fraternity's total initiated membership reached 246,860 with 133 collegiate chapters and 327 alumnae groups. The Fraternity had 1,520 Golden Arrow members and 185 Diamond Arrow members this year.

There were 5,354 women who pledged during 2008–2009, which is 3.8 percent higher from the previous year. The number of legacies who pledged was 687. In addition, 17 alumnae were initiated; and the Fraternity reinstated 28 members.

There were 14 inquires from College Panhellenics, local groups or individuals for extension information. The University of Cincinnati invited the Fraternity to colonize in the 2009–2010 academic year.

Chapters

Alumnae Advisory Committees (AACs) continue to be the Fraternity's first line of chapter support and play an integral role in serving our collegiate chapters. The AAC development program continues in its third year with collegiate regional specialists providing educational opportunities for every AAC during chapter visits.

A micro-Web site was developed for AAC members dedicated to attracting new volunteers and providing easy access to AAC guides and links to support them as coaches, mentors and advisers.

The leadership development consultant (LDC) program continues to provide benefits to the Fraternity. Traveling LDCs are assigned



to regions and work with the regional teams when visiting each chapter during the academic year. In addition, the consultants make special visits to targeted chapters needing assistance. This year, the LDC calendar was extended past Thanksgiving, allowing them to assist with new collegiate officer training. First year resident LDCs were in place for the colonizing recruitment and first year at our new chapters, New York Eta at New York University, Massachusetts Gamma at the Massachusetts Institute of Technology and Mississippi Gamma at Mississippi State University.

The new member program was re-designed and launched in fall 2008. The Living our Values workshop was updated and is used as a values refresher in our chapters.

Beginning this year, collegiate chapters are required to complete the Philanthropy and Community Service Report. In 2008, Pi Phi collegians spent more than 225,000 hours working in their communities and raised more than \$900,000 for philanthropic causes.

Pi Phi joined other Greek organizations in the Alcohol Prevention Coalition affording the Fraternity the opportunity to dialogue with Greek organizations as well as campus administrators in efforts to address issues on alcohol abuse among our collegians. Pi Phi new members are now required to complete GreekLifeEdu™, an online course by Outside the Classroom, prior to initiation.

More chapters improved their performance on the annual chapter evaluation outlining standards in all aspects of chapter life. The

T.A.K.E. FOUNDATION™ Defense Training

You have it in you.™



chapters found new and creative ways to tailor their activities and programs to align with the Fraternity's standard of excellence.

Pi Phi continued its partnership with The Ali Kemp Educational Foundation to bring the T.A.K.E.™ Defense Program to Pi Phi chapters on 14 campuses. Chapters observed National Hazing Prevention Week with chapter and campus programs as well as observing National Collegiate Alcohol Awareness Week and National Eating Disorders Awareness Week.

The Fraternity joined the Greek Video Consortium and helped sponsor the Response Ability video and programming for collegians addressing bystander behavior. The video and program are a resource in the *Leading with Values*® program.

During October 2008, all chapters in the state of Ohio participated in the Remembering Julie Campaign, a fire safety awareness campaign in memory of Julie Turnbull, an Ohio Zeta who died in an off-campus house fire in 2005. With the cooperation of the People's Burn Foundation and Campus Firewatch, Pi Phi chapters distributed fire safety DVDs to all NPC chapters on their campuses and sold safe, flameless wax candles. Proceeds from the candle sales totaled \$6,834.50 and were contributed to the People's Burn Foundation.

The overall chapter GPA for the 2008 calendar year was 3.124. Chapters are now setting the GPA in their bylaws for initiated members to remain in good standing at the local level.

The collegiate team is strong and dedicated to the needs of today's collegiate members. The Fraternity is providing quality, values-based membership experience incorporating life skills for personal growth with sisterhood and love for Pi Beta Phi.

Alumnae Groups

The alumnae team continued to foster a greater appreciation of the role alumnae groups play in achieving the strategic objectives of the Fraternity.

The concept of alumnae group area councils in metropolitan centers continues to demonstrate the benefit of working together in a larger community. The joint efforts of all groups in an area increase the awareness of Pi Beta Phi to the public and send a strong message about our mission and vision.

Literacy initiatives are taking a greater priority in the programming of the alumnae groups. All four components of the initiative — awareness, funding, material resources and hands-on service are being used to energize alumnae organizations and benefit communities.

Regional Leadership Summits were held in all six alumnae regions. These offered opportunities to more than 200 alumnae to gather and exchange ideas about such topics as recruiting more members, fundraising successfully, programming to attract more members, working with chapters to support the concept of Pi Phi for Life, organizing service opportunities in local committees and additional ideas for just having fun.

The alumnae department welcomed Pittsburgh-South Hills, Pennsylvania, Alumnae Club to the Fraternity roster in January 2009.

Literacy

Pi Phi's partnership with First Book® was announced at the 2007 Convention. In July 2008, Pi Phi announced a multi-year \$1 million partnership with First Book, which will provide 1 million new books to children in need. Pi Phi and First Book have distributed more than 1.2 million books to children through Fraternity Day of Service, Founders' Day and The Literacy Site initiatives.

In conjunction with First Book, the Fraternity Day of Service resulted in 50,000 books being donated to children in need. “Make Your Mark for Literacy,” allowed chapters and alumnae groups to hold bookplate-signing events on campus and in communities. The personalized bookplates were placed in books donated to children in need.

Collegians and alumnae have embraced First Book locally and report raising money through First Book Speed Read™ events and starting or joining First Book Advisory Boards across the country. Pi Beta Phi is a member of the First Book board of directors.

Pi Beta Phi chapters and alumnae groups in Canada continue to support and raise funds for First Book Canada/Le Premier Livre.

The Champions are Readers® (CAR) program remains a vital tool for use by collegiate chapters and alumnae organizations. This year, 56 chapters and 28 alumnae groups administered the CAR program in schools across North America. Because of their hard work and dedication, more than 5,900 students were given the opportunity to participate.

Holt House

A mission and vision statement as well as a new logo were adopted for Holt House. Grand Council, in partnership with the Holt House Committee, is working to ensure Holt House’s historic preservation. Plans and work are in progress for updating the kitchen and other interior areas as well as landscaping improvements.

Leadership Training

“Mission 360 – Pi Phi Partnerships on a Common Path” was the theme for the 2008 Officers’ Workshop in St. Louis. Programming for the officers was provided by First Book University and the Leadership Institute – Women with Purpose, Inc.

Communications

Pi Beta Phi communication efforts focused on several goals including integration of the marketing and communications department and the information technology department at Headquarters and strengthening Pi Beta Phi’s brand through various communication vehicles.

Micro-sites were created for each of Pi Phi’s 133 chapters and alumnae groups were given the option to create sites. A micro-site was also launched for the LDC program as well as special events and workshops hosted by Headquarters.

All records from *The Arrow* dating back to 1884 have been catalogued onto a historical DVD, which is sold through Pi Phi Express®.

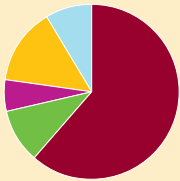
The marketing and communications department at Headquarters supported literacy initiatives including a new literacy DVD and literacy kits provided to every chapter. The department also coordinated new chapter marketing support for recruitment and installation activities for three new chapters in the 2008–2009 academic year. Additionally, all 2009 Convention materials including invitations, signage, programs, PowerPoint templates and handouts were coordinated through the Headquarters marketing and communications department.

The Fraternity Housing Corporation

The Pi Beta Phi Fraternity Housing Corporation (FHC) strives to ensure the highest level of excellence in facility operations, leadership and finance. By providing local Chapter House Corporations (CHC) with needed financial and accounting services, training and property management, the FHC eases the burden placed on our CHC volunteers and thus creates a better volunteer experience.



2009 Revenue



■ Dues and Fees	61%	\$3.17m
■ Merchandise	10%	\$520k
■ Grants and Gifts	6%	\$300k
■ Investment Revenue*	14%	\$727k
■ Miscellaneous	9%	\$440k

2009 Expenditures



■ Chapter Support	23%	\$1.44m
■ Marketing & Communication/ The Arrow	7%	\$450k
■ Convention/Seminars	23%	\$1.4m
■ Membership	6%	\$350k
■ Administration	15%	\$960k
■ National Officers	7%	\$460k
■ Cost of Merchandise	7%	\$410k
■ Club Support	7%	\$450k
■ Other	5%	\$250k

Revenue and Expenditure charts use unaudited figures for the fiscal year ending 6/30/2009.

Administrative expenses, such as salaries and depreciation, have been allocated among other categories to departmentalize the expense.

*Realized and unrealized losses on the investment portfolio are excluded above.

More than 80 CHC members, representing 71 Pi Phi chapters, gathered in October 2008, in Dallas to discuss housing issues at the Fraternity Housing Corporation Housing Symposium. The symposium provided a forum for volunteers to exchange ideas and ask questions. The Housing Symposium was sponsored by the Fraternity Housing Corporation.

Finance

Pi Beta Phi remains financially sound by operating a fiscally conservative budget. Volunteers play a very important role in balancing the budget of the Fraternity. Even in the face of great change, an important part of the overall strategic planning of the Fraternity is a strong financial future. Grand Council bears the overall fiduciary responsibility for the Fraternity, and each member of Grand Council assumes the responsibility to be a good steward of Fraternity resources.

Stone Carlie, LLP is preparing audited financial statements for the fiscal year ending June 30, 2009. These statements are prepared using generally accepted accounting principles. Once these financial statements are complete, a copy may be obtained from the Fraternity controller.

Pi Beta Phi invited 24 chapters to participate in pilot groups with the goal of identifying a financial system making the role of vice president of finance both manageable and desirable. The result of this pilot was the Fraternity partnership with GreekBill, Inc., to provide online accounting service for all Pi Beta Phi chapters effective in the 2009–2010 fiscal year. GreekBill will allow collegiate members private access to their Pi Beta Phi financial accounts and store all invoices online for the duration of collegiate membership. Collegians can also make payments directly to GreekBill either

online or through the mail. In addition, members have the option to set up a separate account for a parent so they can make payments on their daughter’s behalf.

Foundation Support

The Pi Beta Phi Foundation plays an important role in helping fund Fraternity programs. The Foundation sponsored the T.A.K.E. Defense Program at the 2009 Convention for collegians and alumnae. The T.A.K.E. Foundation was formed in memory of Kansas Beta ALI KEMP, who died tragically at age 19. T.A.K.E. is dedicated to empowering women through reality-based, hands-on training.

The Foundation Approved Fraternity Grant Requests of:

Partnership with First Book	\$125,000
LDC Program	\$50,000
Convention	\$50,000
Literacy Video & Kits	\$19,000
T.A.K.E. Sponsorship at Convention	\$10,000
Officers Workshop	\$9,712
Champions are Readers Program	\$9,000
Fraternity Day of Service	\$8,000
Other	\$6,492
UIFI Scholarships	\$4,785
Hazing Prevention	\$4,000
TOTAL	\$295,989

ARE YOU LINKED TO PI PHI?

ARE YOU STILL CONNECTED TO YOUR **PI PHI SISTERS?** NOT SURE HOW TO **RE-CONNECT?** TAKE A LOOK AT A FEW OF PI PHI'S NEW **SOCIAL MEDIA INITIATIVES ...**

eSisters

Built by Pi Phis for Pi Phis, eSisters offers social networking, a more robust Sister Search, the Pi Phi Resource Library, and more!

Finding and connecting with a Pi Phi is easy! Check your profile for pre-populated groups such as your pledge class (great for organizing reunions), your current chapter or alumnae group or create your own custom groups of Pi Phis with similar interests. Reap the benefit of the Pi Phi member database to reconnect with old friends or make new ones today!

www.pibetaphi.org/esisters

Facebook

Pi Phi now has an official presence on Facebook! Facebook is a global social networking Web site, where users can add friends and send messages, update their personal profiles and notify friends about themselves. Users can join networks organized by city, workplace, school and region!

Pi Phis can view Fraternity news and announcements, and read posts from fellow members and fans!

www.facebook.com/pibetaphi

Twitter

Want to know what's going on with Pi Phi? Follow Pi Beta Phi on Twitter! Twitter is a micro-blogging system that enables its users to send and read messages, known as "tweets." Tweets are displayed on Pi Phi's profile page and are delivered to subscribers, known as followers.

Pi Phi uses Twitter to display brief news headlines, announcements, IT alerts, and other Pi Phi-related information!

www.twitter.com/pibetaphiq

YouTube

Pi Phi is also on YouTube, a video sharing Web site!

YouTube displays a wide variety of user-generated video content, including movie clips, TV clips, music videos and other content such as video blogging.

The Fraternity will use YouTube to post convention videos, instructional videos, webinars, commercials, and more!

www.youtube.com/pibetaphiq



Pi Phi for Life:
stay linked ... no
matter where
you are!

Pi Beta Phi Fraternity Day of Service 2010

Pi Beta Phi will celebrate Fraternity Day of Service in 2010 with the Make Your Mark for Literacy bookplate campaign. All collegiate chapters and alumnae groups should plan their events on or around March 2. For every bookplate decorated, a brand-new book will be donated to a child in need. Pi Phi's goal is to donate 50,000 books again this year for underprivileged children.

Fraternity Day of Service packets will contain bookplates, a toolkit (helping you plan a successful event) and a return envelope making it easy for you to return all of your decorated bookplates. Packets will be mailed to chapters in mid-January and to alumnae groups in November. Chapters and alumnae groups can request additional bookplates from Headquarters. These requests will be handled first-come, first-served. All requests should be e-mailed to Special Events Coordinator Julie Ravensberg at julier@pibetaphi.org. The bookplates will be distributed as follows:

- All alumnae groups will receive 50 bookplates.
- Chapters with less than 50 members should expect to receive 100 bookplates.
- Chapters with 51–99 members will receive 250 bookplates.
- Chapters with more than 100 members will receive 500 bookplates.

Feel free to incorporate the bookplate project into an established event or use it to create a brand-new event. Be creative in your planning! For event ideas, check out the Fraternity Day of Service Web page at www.pibetaphi.org.



Speed Read Tourney Held at Convention

Pi Phi's 12 top First Book® fundraising chapters competed in a First Book Speed Read™ challenge throughout convention to win a \$450 Borders® gift card.

Each chapter was selected based on the amount of money raised for First Book in 2008. The first round of the tournament was held during Saturday's Dinner by Chapter. Six chapters moved to the second round, which took place Sunday during General Session. To show their school spirit, participants dressed in school colors and were cheered on by fellow Pi Phis waving Speed Read racing flags.

Representatives from Arkansas Alpha at the University of Arkansas, and California Gamma at the University of Southern California, competed on Monday in the championship round, during which Kyle Zimmer, First Book's co-founder and president, emceed.

Toronto Area Pi Phis Support First Book Canada

Pi Phi from the Toronto Alumnae Club and the Ontario Alpha Chapter at the University of Toronto lent their support at two events promoting fundraising efforts for First Book Canada. On September 15, members of the Toronto Alumnae Club volunteered at a charity golf tournament at Nobleton Lakes Golf Club in Nobleton, Ontario, to show their support of Pi Phi's partnership with First Book Canada. On September 27, Ontario Alpha and Toronto Alumnae Club members participated in Toronto's Word on the Street Festival, Canada's largest festival for books and magazines. Pi Phi gave out books, distributed information and registered potential groups. Wearing READ T-shirts, Pi Phi volunteers staffed the First Book Canada booth and enjoyed sharing the dual commitment to literacy of both Pi Phi and First Book with festival attendees.



TD Bank officers present First Book Canada a check for \$25,000. From left, TD Bank representatives Dave Baznick, Al Stoner and Brian Lee; First Book Canada Executive Director Carol Anne Ruscica; Pi Beta Phi Director Philanthropy ANN CRIGGER SHAW, Arkansas Alpha; and TD Bank representative Lou Panacci.

The women from California Gamma won the opportunity to host a reading party for a local recipient group in the Los Angeles area with the \$450 Borders' gift card. Thank you to all of the chapters who participated in the tournament!



Convention Speed Read Tournament winners from California Gamma receive their \$450 Borders gift card. From left, First Book co-founder and President Kyle Zimmer, California Gamma STEFANIE FARRIS, past Grand President EMILY RUSSELL TARR, Texas Beta, and California Gamma KELSEY CLARK.

Learn more about hosting a Speed Read event by visiting, www.firstbook.org/pibetaphi. From this link, click on the Speed Read logo for more information.

Ask the Webmaster



New to the Web

Did you know the first issue of The Arrow was printed in Lawrence, Kansas? Or the Balfour Cup was presented to the Fraternity in 1921 by Mr. Lloyd G. Balfour in memory of his wife Indiana Gamma RUTH DEHASS BALFOUR? These fun facts and more can be found in a new feature, "Pi Phi Phacts," located on the home page of eSisters! Look for a new "phact" every week!

Feeling Lost?

Having a hard time finding your way around eSisters? Can't figure out how to edit your chapter or alumnae group Web site? Are you an eReports newbie? In times of change, it's easy to feel lost.

Over the last few months, members requested additional content and new features be added to the Pi Phi network. In order to satisfy those requests, and ensure we're meeting the needs of *all* members, we relocated some site content. We realize this can be confusing and frustrating. With that in mind, the Headquarters staff created Pi Beta Phi Video Tutorials for eSisters, eReports and the Ektron content management system for chapters and alumnae groups with Pi Beta Phi hosted Web sites. The video series can be found by visiting www.pibetaphi.org/tutorials, (1) and may also be accessed from eSisters, eReports or the login page from chapter and alumnae group Web sites. (2)

- The eSisters video series offers a step-by-step overview of locating member information and resources; using Sister Search; editing personal information and linking to your Facebook page.
- The eReports video tutorials give chapters and alumnae groups instructions for completing membership updates, changing officers, publishing reports, viewing chapter statements, adding new members and submitting scholarship reports.
- Collegiate and alumnae group Webmasters will benefit from the Ektron content management system tutorials, which outline editing content; adding pictures, tables and links; and using the photo gallery and events calendar.

Each tutorial is approximately five minutes long. Please contact Director of Information Technology Tim Steele, tim@pibetaphi.org, with questions or ideas for additional video tutorials.

A screenshot of the Pi Beta Phi video tutorials website. The page has a white background with a blue header. The header includes the Pi Beta Phi logo and the text 'video tutorials'. Below the header, there is a section titled 'Pi Phi's Library of Video Training for Chapters, Clubs, Officers and Members'. This section contains three main areas: 'Ektron Training', 'eSisters Training', and 'Announcements'. The 'Ektron Training' section has a video thumbnail and text describing it for chapter or club webmasters. The 'eSisters Training' section has a video thumbnail and text describing it for members. The 'Announcements' section lists several recent events and updates. There are two red circular callouts with white numbers '1' and '2' overlaid on the page. Callout '1' is positioned over the 'eSisters Training' section. Callout '2' is positioned over a 'FEELING LOST?' banner at the bottom of the page, which features a video thumbnail and text about finding your way around eSisters.

From the Webmaster's Mailbox

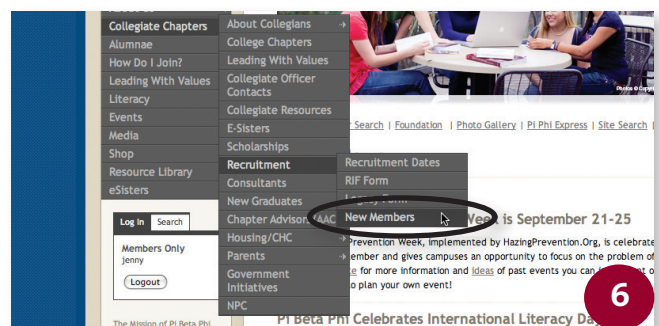
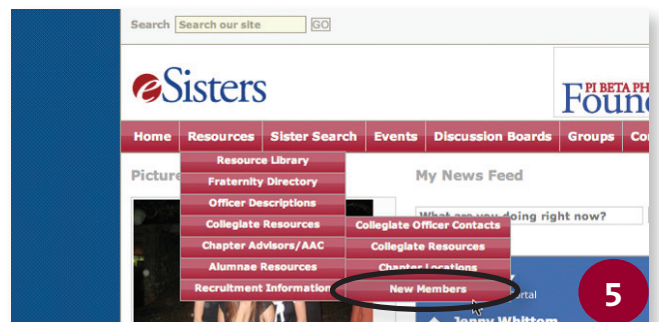
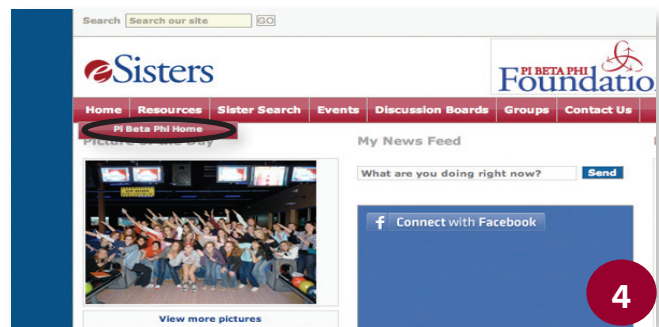
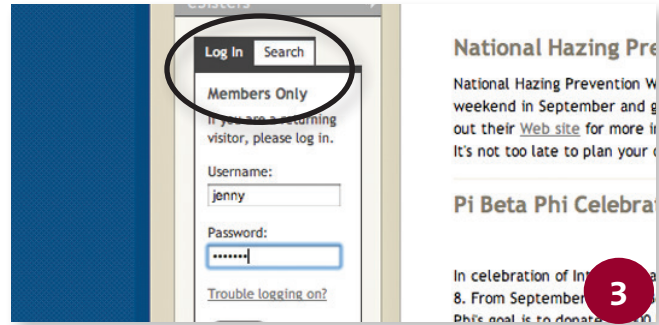
I don't have time to watch the eSisters videos, and I am still having a hard time navigating the site once I've logged in. Can I still access the Members-Only content the old way?

Yes, if you login from the Pi Beta Phi home page, (3) you will be automatically directed into eSisters. Simply place your cursor over the Home button at the top left. A Pi Beta Phi Home button will appear. (4) Click on that button, and you will be returned to the Fraternity home page. Now that you are logged in, you can access all of your Members-Only information in a familiar fashion. Although the information is stored in eSisters, you are still able to access it from the Pi Beta Phi home page.

I submitted a Recruitment Information Form (RIF) for someone. How do I know if she pledged Pi Phi?

All new member lists are located in the New Members section within eSisters. That section is located under Resources>Collegiate Resources>New Members. (5) Select the chapter you would like to view, and an Excel spreadsheet will open with a listing of the new members. If a chapter is not listed, the chapter has not uploaded its new member list yet.

If you wish to access the New Member page from the Fraternity home page, it's still there! You will need to log in before the page is displayed. Once you have logged in and been directed to eSisters, place your cursor on the Home button at the top left and select Pi Beta Phi Home from the drop down menu. You will be taken to the Fraternity home page. On the left hand side of the screen, place your cursor on Collegiate Chapters>Recruitment>New Members. (6) Select the chapter you would like to view, and an Excel spreadsheet will open with a listing of the new members. If a chapter is not listed, the chapter has not uploaded its new member list yet. Check back soon!



 For more Web site navigation tips, click on the Help link at www.pibetaphi.org.

Campus Living



1



2

Foyer



3



4

Recently updated TV lounge

The Washington Alpha Chapter house at the University of Washington

Living room

Welcome to Washington Alpha

“It’s a constant balancing act between maintaining the structure and making the interior more modern and esthetically pleasing. The donations from our alumnae and parents throughout the years have really helped our efforts.”

— Washington Alpha CHC President COREY GIBSON ROBINSON, Washington Gamma.

Located in the heart of Seattle, the Washington Alpha Chapter of Pi Beta Phi at the University of Washington lives in a 68-year-old house with a capacity of 85. A house that old and large has many surprises and bumps in the road throughout the year. The Chapter House Corporation (CHC) spent the last two years doing necessary upgrades to make the house more energy efficient. They replaced a 100-year-old boiler with a new high efficiency version that included a programmable thermostat for the heat system. They also had a complete asbestos abatement and replaced old windows with energy conserving double-pane windows. Donations from the chapter’s parents’ club updated the TV lounge with new leather couches, plantation shutters, fresh paint and flat-screen TVs.

Washington Alpha is also excited to participate in the Fraternity Housing Corporation’s property management program. Despite all of the recent improvements, there is always work to be done and not enough time for volunteers to do everything themselves. The CHC board looks forward to the property management company helping set up systems that will streamline its regular maintenance projects. Most importantly, the CHC is excited to work with the company on long-term planning and budgeting to ensure a strong future for Washington Alpha.

Meet the new Fraternity Housing Corporation Board

The 2009–2011 Grand Council began recruiting a new Fraternity Housing Corporation (FHC) board of directors following the 2009 Convention. An e-mail was sent to the entire membership, seeking individuals interested in using their professional expertise to serve in this volunteer capacity. The response exceeded our expectations! All resumé submitted were carefully reviewed and phone interviews followed for the final candidates. A board with a wide range of skill sets tailored to the specific needs of the FHC was selected. Each member of the team offers unique talents including architectural experience, interior design background, project management skills, financial and banking expertise, Chapter House Corporation (CHC) experience and Fraternity knowledge.

The FHC held its annual board meeting September 14–15, 2009, at Pi Beta Phi Headquarters. During this meeting, the board elected officers, set priorities and assigned responsibilities. This group already has a good understanding of the current needs of our chapters. They strive to remain grounded in their duties as a board and to be fiscally responsible in every action taken to meet chapter needs.

The new board of directors, FHC employees and Fraternity staff are working together to serve the chapters enrolled in the FHC as well as provide financial, property management and newsletter services to CHCs.

“Chapter life can provide a home away from home for collegiate members, said FHC Board President EILEEN O’NEIL GRIGUTIS, Kentucky Beta. “The FHC board is looking forward to facilitating positive chapter life experiences through the provision of safe and well-maintained environments for collegiate members when living or meeting in Pi Phi facilities.”

The Fraternity Executive Director JULI HOLMES WILLEMANN, Iowa Beta, is serving as the interim Fraternity Housing Corporation executive director until this position is filled. The search for a new FHC executive director is currently underway. For a full job description, please visit www.pibetaphi.org/fhc.



Pictured from front left, Secretary CINDY RICE SVEC, Kansas Beta, Treasurer RAE WOHLHUETER MAIER, Kentucky Beta and Board President EILEEN O’NEIL GRIGUTIS, Kentucky Beta. Second row left, board member MARI LOU PSIHOGIOS DIAMOND, Oregon Alpha, Vice President JULIE CAIRONE, Washington Gamma and board member KIMBERLY KLITZ MAEZ, Arizona Gamma. Back row left, board members LEAH CERO FITZGERALD, Kansas Beta and LYN ARNOT CLARK, Texas Alpha.

Welcome new FHC Members!

Chapters enrolled in all FHC Services

Massachusetts Gamma	Ohio Kappa
Mississippi Gamma	Pennsylvania Epsilon
New Mexico Beta	Pennsylvania Kappa
New York Eta	Tennessee Gamma
North Carolina Beta	

CHCs signed up for Property Management Services

California Delta	Iowa Zeta
Georgia Alpha	Washington Alpha

CHCs signed up for Financial Services

California Beta	South Dakota Alpha
Indiana Beta	Wisconsin Alpha

CHCs signed up for Newsletter Services

Indiana Delta	Oklahoma Beta
Michigan Gamma	North Carolina Delta
Ohio Alpha	



Pi Beta Phi Celebrates its Award Winners

▲ The Oklahoma Beta Chapter received five of the six awards given at the Oklahoma State University Greek awards banquet. The chapter was awarded top honors for new member programming, community service programming, scholarship programming, campus involvement programming and risk management programming. The chapter was also recognized as the Zelma Patchin Outstanding Panhellenic Chapter.



For more Collegiate News,
visit www.pibetaphi.org.



◀ **Pennsylvania Thetas at Villanova University earned the Phi level ranking for Chapters of Excellence** for the 2008–2009 academic year. The chapter also received Villanova University’s Chapter of the Year award and the Excellence in Chapter Service award.

In April 2009, the Illinois Zeta Chapter at the University of Illinois was awarded for its outstanding involvement in the Greek community. The chapter was awarded the Most Outstanding Panhellenic Chapter on campus. The chapter also won Top Service, Most Outstanding Philanthropy and Most Outstanding Scholarship Programming awards.



◀ **The Texas Delta Chapter at Texas Christian University completed more than 600 hours of community service** during the spring semester. POLLY NICCOLI, chapter president, participated in a fundraiser at the local zoo for an organization in Fort Worth, Texas, supporting grieving children.

Colorado School of Mines implemented an awards and incentive program called ALPHA, through which Greek organizations are now rated in academic achievement, leadership development and member education, philanthropy and community service, housing operations and chapter management, and activities and athletics. The women of the Colorado Delta Chapter were awarded four out of the five possible stars this semester.



◀ **Nebraska Gamma SARAH WIRTH was honored with the Greek Woman of the Year award, the highest individual honor for a Greek woman at Creighton University.** She is the former vice president of member development and president of her chapter.



▲ At the University of Michigan's Dance Marathon, 22 Michigan Betas spent 30 hours on their feet in March. The event raised more than \$385,000 to benefit the pediatric rehabilitation program at C.S. Mott Children's Hospital in Ann Arbor, Michigan. Each Pi Phi raised \$300 in order to participate.



◀ Massachusetts Gamma received two awards at the Massachusetts Institute of Technology's Fraternity, Sorority and Independent Living Groups Awards Ceremony. A member of the charter class and first president of the chapter, HILLARY BENSON (right), was named New Member of the Year, and Alumnae Advisory Committee vice president of finance adviser, Wisconsin Alpha LESLIE STACHOWIAK (left), was named Outstanding Alumna Adviser.

Missouri Alpha HILLARY MULLIN from the University of Missouri spent her summer in Los Angeles while interning for "Entertainment Tonight." Hillary helped the news director organize breaking news and was able to shadow the executive producer of the television show. She also recorded in front of the camera for the show's sister show, "The Insider."

➤ The Alabama Beta Chapter took first place in Sigma Chi fraternity's annual Derby Days this year at the University of Alabama. The chapter, along with women from other Greek organizations, raised \$32,000 for the Alabama Children's Hospital in Birmingham, Alabama. In addition, the chapter raised \$1,000 for First Book® and the Pi Beta Phi Foundation.

North Carolina Delta's successful recruitment resulted in its highest retention rate ever, which made the 4-year-old chapter become the largest chapter at North Carolina State University. The department of Greek life also awarded the chapter the Excellence in Member Development and Excellence in Scholarship Programming. Former president SARAH MITCHELL was awarded Sorority Woman of the Year and is now a leadership development consultant for the Fraternity.

➤ From left, Tennessee Deltas LEA HAY, THUYVI VO and ALICIA THREKHELD received awards at a Greek banquet at the University of Memphis this year. In total, the chapter took home 13 awards including the Panhellenic Leadership award, Greek Adviser of the Year, Best All-Around Greek Female and Most Talented Greek Female.

Louisiana Beta organized the 16th annual Doubleshot Basketball Tournament in March 2009 and raised more than \$18,000 for First Book and the Pi Beta Phi Foundation. The Greek community at Louisiana State University recognized Louisiana Beta's achievements and awarded them with Most Outstanding Chapter.

➤ There were 23 members of Mississippi Gamma inducted into Mississippi State University's Stackhous Honor College during the spring semester. Stackhous Honor College is one of the most prestigious and challenging honors to have on campus.



2008 Collegiate Awards

The Amy Burnham Onken Award honors a senior member of the Fraternity who has best lived up to Pi Beta Phi's qualities of scholarship, Fraternity service, student activity participation and personality during her college career.



CAITLIN MCLAUGHLIN
Georgia Alpha
University of Georgia

Caitlin served her chapter as vice president of membership and transition officer. She served on the Leadership and Nominating Committee and the Membership

Committee. Caitlin gave back to her community by serving on the executive board of the University of Georgia's Habitat for Humanity as the Greek relations chair. During that time, she oversaw the development of an all-Greek Habitat for Humanity homebuilding program raising \$35,000 its first year. She won prestigious academic scholarships and was a member of community and academic organizations on campus. Caitlin's dedication to Pi Beta Phi, the University of Georgia and her community have made her an outstanding member, officer and campus leader.

The Chapter Service Award honors an individual who has exhibited meritorious service to her chapter through leadership, responsibility, dependability, initiative and contribution to chapter spirit and unity.

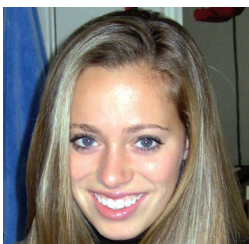


ELIZABETH WEBER
North Dakota Alpha
University of North Dakota

Elizabeth spent almost four semesters as chapter president for North Dakota Alpha. During those four semesters, she rose to every challenge and completed

each task asked of her. She accepted the position during the chapter's probationary period and made North Dakota Alpha the largest chapter at the University of North Dakota. Elizabeth motivated her chapter to work as a team toward a common goal. Her calm and encouraging leadership provided the stability the chapter needed. Her mentality of "I can do that" became "We can do that" for the chapter, showing her true servant leadership in Pi Beta Phi.

The Jean Wirths Scott Leadership Award recognizes a junior or senior who has served on executive council in an exemplary manner, and, in the performance of her duties, has implemented changes and improvements in her chapter.



ALLISON FOROOBAR
Virginia Epsilon
University of Virginia

Allison began her Pi Phi leadership as new member class president and became vice president of member development and chapter president. During her term as vice president of member development, she rebuilt and energized Virginia Epsilon's programming. She developed and implemented an educational presentation program for the chapter, which is led by chapter members based on their talents and passions. Allison also spent a summer compiling contact information from more than 200 alumnae. When she joined executive council, she worked to remodel the chapter's social events to fit the liability requirements of the Fraternity. Her strong presence as a leader transformed the chapter with programming, social events and philanthropic efforts.

Congratulations to the 2008 Collegiate Award Winners

Balfour Cup



Arkansas Alpha,
University of Arkansas

2nd Best Chapter of Excellence

Tennessee Beta,
Vanderbilt University

3rd Best Chapter of Excellence

North Carolina Alpha,
University of North Carolina

Chapters of Excellence — Phi Level

Arkansas Alpha,
University of Arkansas

Colorado Epsilon,
University of Colorado,
Colorado Springs

D.C. Alpha,
The George Washington
University

Michigan Alpha,
Hillsdale College

Nebraska Gamma,
Creighton University

North Carolina Alpha,
University of North Carolina

Oklahoma Beta,
Oklahoma State University

Oregon Alpha,
University of Oregon

Oregon Gamma,
Willamette University

Tennessee Beta,
Vanderbilt University

Beta Level Recognition

Alabama Alpha,
Birmingham-Southern College

Arizona Alpha,
University of Arizona

California Alpha,
Stanford University

Florida Alpha,
Stetson University

Florida Delta,
University of Florida

Georgia Alpha,
University of Georgia

Illinois Eta,
Millikin University

Kansas Alpha,
University of Kansas

Kansas Beta,
Kansas State University

Michigan Gamma,
Michigan State University

Pennsylvania Theta,
Villanova University

South Dakota Alpha,
University of South Dakota

Virginia Epsilon,
University of Virginia

Virginia Eta,
University of Richmond

Virginia Theta,
Washington & Lee University

Washington Gamma,
University of Puget Sound

Pi Level Recognition

Alabama Beta,
University of Alabama

Alabama Gamma,
Auburn University

Arizona Gamma,
Northern Arizona University

California Theta,
University of California, Davis

California Mu,
Pepperdine University

California Nu,
Loyola Marymount University

Colorado Gamma,
Colorado State University

Illinois Beta-Delta,
Knox College

Illinois Theta,
Bradley University

Indiana Zeta,
University of Illinois

Iowa Beta,
Simpson College

Iowa Gamma,
Iowa State University

Louisiana Alpha,
Tulane Univ.-Newcomb College

Michigan Beta,
University of Michigan

Minnesota Alpha,
University of Minnesota

Missouri Alpha,
University of Missouri

Missouri Gamma,
Drury University

Nebraska Beta,
University of Nebraska

Nevada Alpha,
University of Nevada

New York Delta,
Cornell University

North Carolina Beta,
Duke University

North Carolina Gamma,
Wake Forest University

Ohio Beta,
The Ohio State University

Pennsylvania Epsilon,
Pennsylvania State University

Tennessee Gamma,
University of Tennessee

Texas Zeta,
Baylor University

Vermont Beta,
University of Vermont

Virginia Gamma,
College of William & Mary

Virginia Zeta,
Virginia Polytechnic Institute &
State University

Pi Beta Phi Spirit Awards

Arizona Beta,
Arizona State University

Illinois Beta-Delta,
Knox College

Iowa Beta,
Simpson College

Kansas Beta,
Kansas State University

Louisiana Alpha,
Tulane University-Newcomb
College

Michigan Beta,
University of Michigan

Ohio Beta,
The Ohio State University

Pennsylvania Epsilon,
Pennsylvania State University

Virginia Gamma,
College of William & Mary

Wyoming Alpha,
University of Wyoming

Excellence in Academic Mentoring Programming

Oklahoma Beta,
Oklahoma State University

HM: Florida Alpha,
Stetson University

Excellence in Alumnae Advisory Committee Service

Alabama Alpha,
Birmingham-Southern College

California Eta,
University of California, Irvine

Kentucky Gamma,
Eastern Kentucky University

Michigan Epsilon,
Western Michigan University

Missouri Beta,
Washington University

Ohio Beta,
The Ohio State University

Oklahoma Beta,
Oklahoma State University

Oregon Gamma,
Willamette University

Pennsylvania Epsilon,
Pennsylvania State University

Washington Gamma,
University of Puget Sound



Excellence in Appreciation of Fraternity Values

Illinois Eta,
Millikin University

HM: Arkansas Alpha,
University of Arkansas

Ohio Beta,
The Ohio State University

Excellence in Communications

D.C. Alpha,
The George Washington University

HM: Arkansas Alpha,
University of Arkansas

Excellence in Community Service/Philanthropy Projects

Louisiana Alpha,
Tulane University-Newcomb College

HM: Minnesota Alpha,
University of Minnesota

Excellence in Fraternity Heritage Programming

Alabama Alpha,
Birmingham-Southern College
Nebraska Gamma,
Creighton University

HM: California Eta,
University of California, Irvine

Excellence in Literacy Activities

Connecticut Beta,
University of Connecticut

HM: Arkansas Alpha,
University of Arkansas

Excellence in Pi Phi for Life/Senior Programming

Arkansas Alpha,
University of Arkansas

HM: Virginia Gamma,
College of William & Mary

Excellence in New Member Programming

Missouri Alpha,
University of Missouri

HM: Michigan Beta,
University of Michigan

Excellence in Recruitment COB

Illinois Eta,
Millikin University

HM: Mississippi Alpha,
University of S. Mississippi

Excellence in Risk Management/Legal Programming

West Virginia Alpha,
West Virginia University

HM: Illinois Theta,
Bradley University

Excellence in Servant Leadership

Illinois Beta-Delta,
Knox College

HM: Colorado Gamma,
Colorado State University

Excellence in Scholarship Award Highest GPA

Fewer than 100 Members:
California Alpha,
Stanford University

More than 100 Members:
Connecticut Beta,
Yale University

Chapter House Corporation Excellence

Missouri Alpha,
University of Missouri
Tennessee Beta,
Vanderbilt University

Most Improved Scholarship Award

Fewer than 100 Members:
California Alpha,
Stanford University

More than 100 Members:
Pennsylvania Beta,
Bucknell University

Excellence in Panhellenic Large & Small

Small
Oregon Gamma,
Willamette University

HM: Connecticut Beta,
Yale University

Large
Kansas Beta,
Kansas State University

HM: Virginia Gamma,
College of William & Mary

Outstanding Financial Adviser, Carol Inge Warren Award

Brittany Bruns,
Kansas Beta,
Kansas State University

HM: Lauren Shephard,
Virginia Gamma,
College of William & Mary

Scholarship Award Listings

Top 10 – In alphabetical order
California Alpha,
Stanford University

California Mu,
Pepperdine University
Connecticut Beta,
Yale University

Illinois Zeta,
University of Illinois

Missouri Beta,
Washington University

Missouri Gamma,
Drury University

Nebraska Gamma,
Creighton University

New York Delta,
Cornell University

Tennessee Beta,
Vanderbilt University

Virginia Eta,
University of Richmond

#1 in GPA on Campus
California Theta,
University of California, Davis

Colorado Gamma,
Colorado State University

Florida Alpha,
Stetson University

New Mexico Alpha,
University of New Mexico

Oregon Alpha,
University of Oregon

Oregon Gamma,
Willamette University

Silver Slipper Award

Sarah Atkinson,
Illinois Eta,
Millikin University

HM: Lauren Mortara,
Virginia Gamma,
College of William & Mary

Dorothy Weaver Morgan Award

Idaho Alpha,
University of Idaho



The Pi Beta Phi Crest

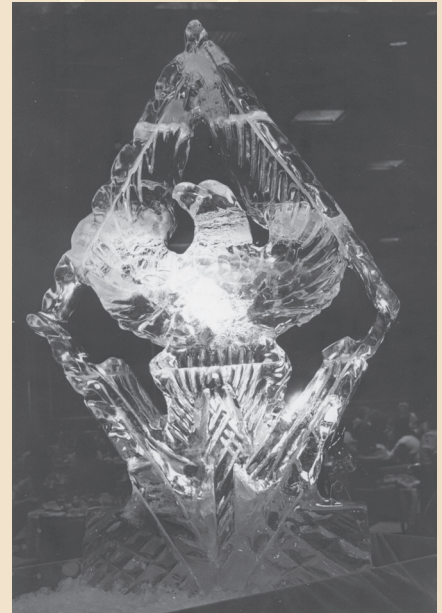
Pi Beta Phi is the only women's fraternity to use a lozenge, or diamond shaped, crest. In 1910, New York Beta ANNA PETTIT BROOMELL chaired a committee for the crest's development.



English heraldry states that unmarried women bear their heraldic devices on a lozenge rather than a shield, always omit the helmet and plumed crest and do not have mottos. Therefore, the committee, upon the advice of a heraldry expert, stated that the lozenge signified a woman's organization. The committee submitted the crest to the 1910 Swarthmore Convention, where it was adopted. Grand Council adopted the crest in February 1912, and it was copyrighted.

The crest is blazoned with the Brownlee family crest because Illinois Alpha EMMA BROWNLEE KILGORE was the first president of I.C. Sorosis. An eagle is displayed in the center of the crest, on top of which is Monmouth College's seal. The seal is a blazing sun with the Latin word "Lux" in the center. Lux, in Latin, means light. In the eagle's right talon is the monogram "I. C.," and the left talon holds an arrow. The eagle holds both the arrow and "I. C." to signify the absolute identity between I.C. Sorosis and Pi Beta Phi.

According to Anna Broomwell, "symbols of the Pi Beta Phi coat of arms should bring to the mind of every Pi Beta Phi a realization that this great Fraternity of ours is a heritage from the past, that we who are proud to use its coat of arms should be equally proud to uphold the ideals for which those noble women, our founders, established the first chapter at Monmouth College, and that our modern fraternalism should embody in the chivalry of the past."



The Pi Beta Phi crest, carved in ice, welcomed more than 900 Pi Phis to the 1981 Dallas Convention.



At the 1983 Louisville Convention, Grand Council presented the Fraternity with a large banner displaying the coat of arms, which was put up behind the podium. The banner has held that spot at every convention since.

Together to Give: The 2009 *Friendship* FUND

Built upon the traditions of philanthropy extending back to our founders, the Foundation is truly a foundation of support for a Fraternity of action.

Since 1990, the aim of Pi Beta Phi Foundation has remained clear: through education, leadership and philanthropy, we enrich lives and support Pi Phis and the community at large.

“Together to Give,” the 2009 Foundation Friendship Fund Campaign, will bring thousands of Pi Phis together to continue the legacy of sisterhood and philanthropy first demonstrated by our founders so long ago.

We’ve targeted a goal of \$800,000. It’s not just a number; it’s an opportunity for your sisters to benefit from the same Pi Phi experiences you do. Your Friendship Fund gift will make a difference — in education, leadership and philanthropy.

We invite all Pi Phis to take aim at making a difference for your Fraternity and your sisters. Together to Give. We are the Foundation of Pi Beta Phi.

Make your Friendship Fund gift today! Call us at (636) 256-0680 or visit our secure Web site at www.pibetaphifoundation.org.

Foundation FAQs

I RECEIVED A FRIENDSHIP FUND REQUEST IN THE MAIL. DO YOU MAIL TO EVERY PI PHI?

Since the cost of printing and postage is high, we mail to current and past donors and try to include the full membership when possible. If you would like to be added to the Foundation mailing list, send an e-mail to fndn@pibetaphi.org.

THE FOUNDATION SUPPORTS MANY GRANTS AND PROGRAMS — SCHOLARSHIPS, EMMA HARPER TURNER FUND, LEADERSHIP, LITERACY, HOLT HOUSE, ARROWMONT AND MUCH MORE. WHERE DOES MY GIFT TO THE FRIENDSHIP FUND GO?

A gift to the Friendship Fund benefits all of these grants and programs. Your gift is applied to the areas with the greatest need.

HOW IS THE FOUNDATION’S EMMA HARPER TURNER FUND DIFFERENT THAN THE FRATERNITY’S SISTER TO SISTER PROGRAM?

While gifts to both the Emma Harper Turner Fund and the Sister to Sister program benefit Pi Phis in financial need, only gifts to the Foundation are tax-deductible.



To learn more about
Foundation grants and programs,
visit www.pibetaphifoundation.org.



Donor Spotlight: Tina Rivard

An Unexpected Journey to Life-long Leadership

Becoming a member of Pi Beta Phi was not something Pennsylvania Theta TINA RIVARD had planned. “During recruitment at Villanova, I was positive about one thing,” she recalled. “I did not see myself in Pi Phi!”

Within a few months, Tina would completely change her way of thinking, thanks to an important Fraternity leadership program funded by Pi Beta Phi Foundation. Through the Foundation’s support of the Fraternity and its members, Tina began her journey to lifelong leadership.

It started with a visit to Villanova University’s Greek life adviser, who told Tina Pi Beta Phi was looking for future leaders who could help strengthen the current sisterhood. Two resident graduate consultants (now called leadership development consultants or LDCs) were going to live on campus to revitalize membership.

The adviser encouraged Tina to attend an informational meeting about the chapter’s development. During the meeting, Tina became excited and hopeful for the future. “I could see myself in a leadership role there,” she said. Just one week before finals began, Tina became a member of Pi Beta Phi.

With guidance from the resident graduate consultants, Tina became a leader within her chapter, including serving as chapter president. Now, as an alumna, Tina continues her leadership in Pi Beta Phi as director membership.

Tina credits Pi Beta Phi Foundation for helping her grow and succeed. “I look back and see how much my success comes from the leadership programs the Foundation supports.” She also believes the consultant program saved her chapter. “Without the Foundation’s support of the LDC program, my chapter may not still be around,” she said.

Tina is a Pi Phi Partner (P3). Designed exclusively for young Foundation donors, P3s receive quarterly e-newsletters filled with fun and informational articles for 20- and 30-some-things. “I look forward to the P3 e-newsletters every quarter,” Tina said. “I am energized by the number of young alumnae who see the value of the Foundation and support them financially. Giving back annually is the least we can do!”

Tina’s story demonstrates the opportunities for personal growth made possible through the Foundation’s support of Fraternity leadership programs. In gratitude for what she’s gained, Tina donates to the Foundation so other Pi Phis may benefit, too.

For more information on becoming a Pi Phi Partner or making a donation to the Foundation, visit us at www.pibetaphifoundation.org.



Director Membership TINA RIVARD, Pennsylvania Theta educates TRACIE NYGAARD, Oregon Gamma, about policies and procedures during leadership development consultant training at Headquarters.

Foundation Intern Connects with Generations of Pi Phis

BY: MARGARET MERLO, ILLINOIS THETA

There I was last fall, a brand-new freshman at Bradley University, standing on a chair and holding my bid card envelope up to the light. I looked silly, but I couldn't wait any longer to see where my new home would be! I saw the silhouette of our distinctive crest, and with jumps of joy and hugs with my new sisters, I began my life in Pi Beta Phi.

Last spring, I received an e-mail from our chapter president about an internship at Pi Beta Phi Foundation in which all members in the St. Louis area were invited to apply. I saw my future lying somewhere in marketing or communications, so I knew this would be a great opportunity. A week later, I was called back for an interview and finally got the job!

The moment I stepped foot into Pi Phi Headquarters, I was instantly thrown into the chaos of convention preparation. I took on a new love for assembling luggage tags and navigating the office supply room.

Still, the highlight was always calling donors and thanking them for their generosity to the Foundation. I was able to have conversations with alumnae from all over the United States. I remember exchanging stories with a woman who told me about her chapter winning a dance contest, and I shared with her that my chapter had won one, as well! I kept thinking to myself, I can't believe I was only initiated last year, yet have so much in common with someone initiated in 1949!

Without the Foundation, so many opportunities to build relationships between generations would fall to the wayside. Pi Beta Phi has given so much to so many women through the years, and we have a responsibility to share our success and help our family grow.

Interning at the Foundation has opened my eyes to a new side of Pi Beta Phi, and I am proud of my sisters and all we do for each other. It's hard to know where the future will take me, but I am certain Pi Phi will always be in my heart. I look forward to the day when I can give back and help young women build their foundation and find their home in Pi Beta Phi.



As part of her internship, Illinois Theta MARGARET MERLO helped the Foundation at the 67th Biennial Convention.

Convention Roundup!

The Foundation was truly “Deep in the Heart of Friendship” at the 67th Biennial Convention in Grapevine, Texas, June 26–30, 2009! For four exciting days, the Foundation celebrated Pi Phi sisterhood and renewed its commitment to support the Fraternity and its members. Some highlights included:

- the unveiling of the updated Pi Beta Phi Foundation brand at the Foundation dinner on Sunday;
- celebrating the completion of The Campaign for Pi Beta Phi Foundation at a breakfast for individual, chapter and club campaign donors on Saturday;
- raising more than \$29,000 for the Foundation’s Friendship Fund with the help of Clara the Cowgirl, tribute heart sales and an impromptu oral auction, which brought in a \$2,000 bid;
- donating \$125,000 to First Book® and \$10,000 to The Ali Kemp Educational Foundation (T.A.K.E™).

To read a complete account of Foundation convention coverage and view the Foundation’s brand video, visit its updated Web site at www.pibetaphifoundation.org.



Incoming Foundation Board President PEGGY WILSON LAWRENCE, Tennessee Gamma, introduces the Foundation’s updated brand.



First Book co-founder and president Kyle Zimmer accepts a \$125,000 check from Foundation President LISA GAMEL SCOTT, Colorado Alpha, and Foundation Executive Director Teri Champion.

Fond Farewells and Warm Welcomes

The Foundation extends grateful appreciation and thanks for the service of departing members of the board of trustees and Foundation committees.

Trustees: Colorado Alpha LISA GAMEL SCOTT and Texas Beta EMILY RUSSELL TARR, ex-officio.

Committee Members: Arkansas Alpha CAROLINE MALONE CRAVEN, Texas Gamma BETH VAN MAANEN BEATTY, Oklahoma Beta DEBBIE HUNT GREENWOOD and Ohio Epsilon ALLISON GONZALEZ.

A special thanks to Ohio Zeta KIM O’BRIEN for serving a second term as chairman of the Emma Harper Turner Fund Committee.

The Foundation extends a warm welcome to newly appointed trustee and committee members.

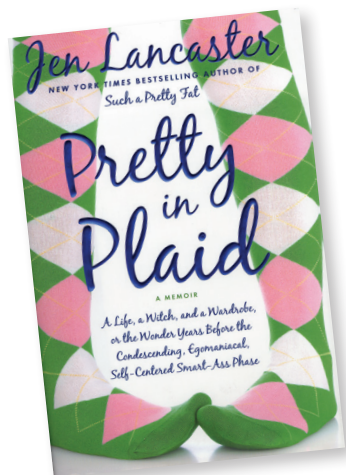
Trustees: Illinois Zeta TAMMIE BECKWITH SCHALLMO and Oklahoma Beta MARY LOY TATUM, ex-officio.

Committee Members: Oregon Alpha MARI LOU PSIHOGIOS DIAMOND, Missouri Alpha RACHEL COHEN, Texas Delta SARAH LEFFEN and Ontario Gamma ORIANA BERTUCCI.

A complete list of Foundation trustees and committees is available at www.pibetaphifoundation.org.

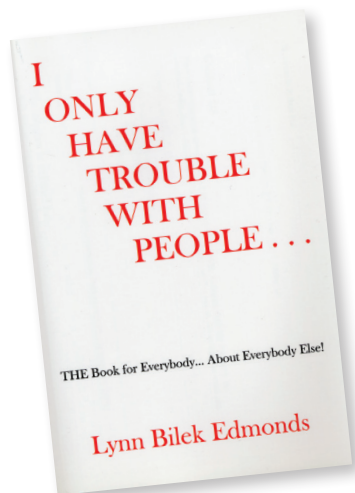


Pi Phi Pens



Jen Lancaster

New York Times bestselling author JEN LANCASTER, Indiana Eta, recently released her fourth book, “Pretty in Plaid.” Jen treats readers to a hilarious trip down memory lane including her time as a Pi Phi at the University of Indiana – Purdue University at Fort Wayne. Jen has written three additional bestselling memoirs, “Bitter is the New Black,” “Big Lights, Big Ass” and “Such a Pretty Fat.” She has appeared on National Public Radio’s “All Things Considered” and written for *Women’s Health* and *Cosmopolitan UK*. Look for her next book, “My Fair Lazy,” in stores May 2010. Visit her blog at jennsylvania.com.



Lynn Bilek Edmonds

“I Only Have Trouble with People ...” by LYNN BILEK EDMONDS, Colorado Beta, at the University of Denver, is a collection of viewpoints about life’s irritations and her philosophies. She offers wisdom and laughter about her outlook on life. Lynne, a former actress, wrote the book while working for Joey Edmonds Presents, an agency representing comedians in the college market.



For more information
about these and other Pi Phi Pens
visit, www.pibetaphi.org.



1 < Members of the Seattle Alumnae Club attended the annual Page Ahead luncheon in Seattle to fundraise for local literacy efforts. Seated from left, Washington Alphas COREY GIBSON ROBINSON, CAROLINE OLSON PETTIT and BARBARA CLANTON ACKERMAN. From back left, Washington Beta SUSIE BLAKE, Washington Gamma WHITTNEE COX CHEN, Washington Alpha KIM KIMMY TOMCZAK, Illinois Epsilon BRENDA MCCLURE MALLET, Washington Alpha MARGARET SUNDBERG, Oregon Gamma MARIAN HAUKE THOM and Washington Alpha LINDA KNUTZEN BARBO.



2 < Members of the Augusta, Georgia, Alumnae Club made a road trip on Founders' Day to visit South Carolina Alpha FRAN FELTON STEWART, who moved to Greensboro, Georgia, with her husband. Seated from left, Georgia Alpha BEVERLY BELL DUNBAR and South Carolina Alpha CAMILLA PHILSON HUMPHREY. Standing from left, Georgia Alpha JOANNE WILSON TYLER, Ohio Zeta CONNIE FORREST MINTZ, South Carolina Alpha FRAN FELTON STEWART and New Mexico Alpha MICHEL ROESSLER YOUNG.



3 < From left, Illinois Zetas CINDY HORN BURKERT, ELANA HANSON and KATHY GRAHAM GADLER from the University of Illinois visited the Great Wall of China in June 2009.

Pennsylvania Theta TRISTA FELTY was one of a team of three women who successfully swam the English Channel to raise money for Multiple Sclerosis. Trista and two of her former Villanova University swim teammates formed a team in support of another Villanova swimmer who was diagnosed with Multiple Sclerosis in 2007. Trista and her teammates swam the Channel in 11 hours and were one of two teams to successfully swim that day. The teammates took turns swimming for an hour at a time.



4 ◀ From left, Illinois Epsilon JUDITH ASHTON, Kansas Alpha NANCY NEWLIN ASHTON and Kansas Alpha SIDNEY ASHTON GARRETT celebrated with Nancy, a Diamond Arrow member of the Lawrence, Kansas, Alumnae Club, this Founders' Day. The club held the celebration at the Kansas Alpha Chapter on the University of Kansas campus.



5 ◀ In April, Louisiana Beta AMANDA STRICKLAND STOUT was honored by Louisiana State University at the fifth annual Greek Gala. Amanda, now the Louisiana Beta Alumnae Advisory Committee chair, received the award from Louisiana Secretary of State Jay Dardenne. Honorees were chosen for making an impact on Greek life, their community or in his/her profession as well as for exemplifying the ideals of their Greek organization.



6 ◀ Members from the Clearwater and St. Petersburg, Florida, Alumnae Clubs visited an Arrowmont exhibit, "Craft-ed!" at the nearby Dunedin Fine Arts Center in May. The exhibit includes various works from the Arrowmont Artists in Residence Program. From left, Indiana Epsilon NANCY COX LAHR, Pennsylvania Beta JUNE GRIM RENVILLE, Ohio Eta KATE GILBERT PHIFER, Missouri Beta RONNIE BLACKMORE OARD and Idaho Alpha RENEE SIMS HARDMAN. Back row left, Indiana Alpha JUANITA WUTHRICH WILLIAMS, Tennessee Gamma ALICE JAMMES MARTIN, Illinois Theta SANDY ERIKSON, New York Alpha PAT DUNN MORIARTY and Indiana Gamma BETTY ANN LEWIS FOXWORTHY.

7



7 ^ Kentucky Alpha EDIE SMITH (right) and Michigan Gamma ANN RUEBENSAAL MORROW, both members of the Lowcountry, South Carolina, Alumnae Club, celebrated the end of the year with the first and second-grade students of Mossy Oaks Elementary School in Beaufort, South Carolina. Edie and Ann volunteered on a weekly basis in two classes, working individually with the students on their reading and math skills. Both will return this fall to implement the Champions are Readers® program.

8



8 ^ Members of the Toronto Alumnae Club and the Ontario Alpha Chapter gathered at the chapter house on the University of Toronto's campus to celebrate the Fraternity Day of Service with an annual First Book Speed Read™. Proceeds from the day, along with the money raised by the Ontario Alpha 100th Committee were donated to First Book® Canada.

2008 Alumnae Awards



Emma Harper Turner Leadership Award

JOANNE FLOWERS DUNCAN
South Carolina Alpha
University of South Carolina
Columbia, South Carolina
Alumnae Club

South Carolina JOANNE FLOWERS DUNCAN received the Emma Harper Turner Leadership Award. After retiring from her professional career, she accepted various positions of leadership in the Columbia, South Carolina, Alumnae Club culminating with two years of service as club president. In 2006, Joanne planned an alumnae event attended by more than 40 Pi Phis from across the country. The event began to re-energize the club. During Joanne's first year as co-president, she published the first alumnae club directory since 2002. Her leadership stems from the example she sets, which has made the club successful in receiving a Clubs of Excellence award.



Evelyn Peters Kyle Angel Award for Club Service

JACQUIE TROMBLEY HARRELL
Michigan Alpha
Hillsdale College
Glen Ellyn-Wheaton, Illinois
Alumnae Club

Pi Beta Phi awarded JACQUIE TROMBLEY HARRELL with the Evelyn Peters Kyle Angel Award for Club Service. Jacquie has been an active alumna since her graduation from Hillsdale College in 1960, when she began her alumnae club affiliation with the Woodward, Michigan, Alumnae Club. She has been a member of the Glen Ellyn-Wheaton, Illinois, Alumnae Club for 43 years and served as club president from 1995–1997. She also served in every position except treasurer and now serves as the Pi Phi Perks co-chairman. Her enthusiastic attitude to be the first to volunteer has brought the club much success.



Service in Sisterhood Award

KAREN CONSALUS PRICE
Missouri Alpha
University of Missouri

Missouri Alpha KAREN CONSALUS PRICE was awarded the inaugural Service in Sisterhood Award. She has served as a role model and mentor to our chapters and Fraternity officers. She has dedicated her time to the Fraternity as grand vice president finance, grand vice president philanthropy, director finance, collegiate province president and graduate consultant coordinator. Locally, she has served as the Missouri Alpha Chapter House Corporation treasurer and the Jackson, Mississippi, Alumnae Club secretary. Karen's loyalty, intellect and success in every job have made her an invaluable asset to the Fraternity through her many years of service.



Dorothy Weaver Morgan Award

BETTY BLADES LOFTON
Indiana Gamma
Butler University

The Fraternity awarded Indiana Gamma BETTY BLADES LOFTON with the Dorothy Weaver Morgan Award. Betty served the Fraternity as grand vice president of philanthropies, director of membership and as Panhellenic delegate. She served on Grand Council for 12 years. Upon completion of her Grand Council term, she became a Pi Beta Phi Foundation trustee and eventually was elected president. Revenue growth during her nine years as trustee was among the most successful in the history of the Foundation. Betty is a Golden Arrow member of Pi Beta Phi, and her dedication and love for the Fraternity are seen through her volunteer and philanthropic efforts.

Members of Distinction

Three members were honored as the 2008 Members of Distinction. This premier award is designed to honor and recognize members of the Fraternity who have distinguished themselves and have achieved success and recognition within their profession.



SENATOR KAY BAILEY HUTCHISON
Texas Alpha
University of Texas

Senator KAY BAILEY HUTCHISON graduated from the University of Texas and University of Texas Law School. She was twice elected to the Texas House of Representatives. In 1990, she was elected Texas State treasurer. In 1993, she was elected to the United States Senate in a special election. One year later, she was re-elected to a full six-year term. In 2000, she received more votes for her re-election to a second full term than any other statewide candidate had ever received. And in 2006, she was again re-elected by an overwhelming margin. Senator Hutchison is the author of three books including, “Nine and Counting: The Women of the Senate,” “American Heroines: The Spirited Women Who Shaped our Country” and “Leading Ladies: American Trailblazers.”



ELINOR TATUM
New York Gamma
St. Lawrence University

In 1997, ELINOR TATUM became one of the youngest publishers in the history of the black press when she was appointed publisher and editor-in-chief of the New York Amsterdam News, the oldest and largest black newspaper in New York. Elinor also produces and co-hosts a weekly segment of Al Sharpton’s weekly radio show, “Keeping It Real.” She has guest hosted the WWRL radio morning and afternoon drive programs and appeared on “The O’Reilly Factor,” “20/20,” “New York 1,” “CUNY TV,” “The Today Show” and “NBC Nightly News.” She is an active member of the greater New York community where she sits on numerous boards including The New York Urban League, the Neighborhood Defender Service of Harlem and the South Street Seaport Museum.



KRISTY WEBER, M.D.
Missouri Alpha
University of Missouri

KRISTY WEBER graduated from the University of Missouri-Columbia. In 1987, she was the recipient of the international Amy Burnham Onken award. After graduating from Johns Hopkins medical school and completing her residency and fellowship she took a faculty position at the University of Texas MD Anderson Cancer Center. There she developed a clinical practice caring for children and adults with bone and soft tissue tumors as well as a laboratory program studying the molecular aspects of musculoskeletal cancers. In 2003, Kristy returned to Johns Hopkins where she is the chief of orthopaedic oncology and director of the Sarcoma Program.

Congratulations to the 2008 Alumnae Award Winners

Premier Club

Kansas City, Missouri/Shawnee Mission, Kansas

Clubs of Excellence

Region One

Bostonian, Massachusetts
Chesapeake, Maryland
Hartford, Connecticut
Nation's Capital-D.C.
New York City-Manhattan, New York
Northern Virginia
Philadelphia Mainline, Pennsylvania
Potomac Falls, Virginia
Richmond, Virginia

Region Two

Atlanta, Georgia
Birmingham, Alabama
Columbia, South Carolina
DeLand, Florida
Nashville, Tennessee

Region Three

Arlington Heights, Illinois
Bloomfield Hills, Michigan
Columbus, Ohio
Glen Ellyn-Wheaton, Illinois
Indianapolis South Suburban, Indiana
Minneapolis, Minnesota

Region Four

Dallas, Texas
Kansas City, Missouri/Shawnee Mission, Kansas
Katy-West Houston, Texas
McKinney, Texas
Oklahoma City, Oklahoma
Richardson-Plano, Texas
Southlake, Texas

Region Five

Bellevue-Eastside, Washington
Colorado Springs, Colorado
Denver, Colorado

Lake Oswego/Dunthorpe, Oregon
Portland, Oregon
Seattle, Washington

Region Six

Albuquerque, New Mexico
Central Orange County, California
La Jolla, California
Phoenix, Arizona
San Francisco, California
San Jose, California
South Orange County, California
Tucson, Arizona

Clubs of Superior Performance

Region One

Northern New Jersey
South Fairfield County, Connecticut
Tidewater, Virginia

Region Two

Greenville, South Carolina
Little Rock, Arkansas
Louisiana Northshore
Lowcountry, South Carolina
North Carolina Triangle
North Mississippi, Mississippi

Region Three

Bloomington, Indiana
Cedar Rapids, Iowa
Cleveland East, Ohio
Lake Shore, Illinois
Madison, Wisconsin
Omaha, Nebraska
Toronto, Ontario

Region Four

Fort Worth, Texas
Lawrence, Kansas
Norman, Oklahoma
Tulsa, Oklahoma

Region Five

Edmonton, Alberta

Eugene, Oregon

Highlands Ranch, Colorado

Region Six

Arrowhead-West Phoenix, Arizona
Long Beach, California
San Diego, California
South Bay, California

Excellence in Chapter Support

Phoenix, Arizona

Excellence in Communication

Overall Winner

Phoenix, Arizona

Region One

Northern Virginia
Philadelphia-Mainline, Pennsylvania

Region Two

Birmingham, Alabama
Columbia, South Carolina
Louisiana Northshore
Lowcountry, South Carolina
Nashville, Tennessee
North Carolina Triangle

Region Three

Columbus, Ohio
Des Moines, Iowa
Glen Ellyn-Wheaton, Illinois
Indianapolis South Suburban, Indiana
Madison, Wisconsin
Toronto, Ontario

Region Four

Dallas, Texas
Houston, Texas
Kansas City, Missouri-Shawnee Mission, Kansas
Katy-West Houston, Texas
McKinney, Texas
Norman, Oklahoma
Oklahoma City, Oklahoma
Southlake, Texas

Region Five

Bellevue-Eastside, Washington
Colorado Springs, Colorado
Denver, Colorado
Fort Collins, Colorado
Lake Oswego-Dunthorpe, Oregon
Seattle, Washington

Region Six

Arrowhead-West Phoenix, Arizona
Central Orange County, California
San Jose, California
South Orange County, California

Excellence in Community Service

Large Club: Nashville, Tennessee

HM: St. Louis, Missouri

Small Club: Lawrence, Kansas

Excellence in Literacy Initiatives

Large Club: Phoenix, Arizona

Small Club: Tucson, Arizona

Excellence in Membership Recruitment and Retention

Overall winner: Peoria, Illinois

Under 50: Hutchinson, Kansas

51-100: Sandhills, North Carolina

101-150: Midland, Texas

151-250: Tyler, Texas

251-600: Colorado Springs, Colorado

600+: Houston, Texas

Excellence in Programming

Nation's Capital-D.C. and Phoenix, Arizona

HM: Northern Virginia

Reunions & Anniversaries

1 > The Wisconsin Alpha graduating class of 2004 held their annual reunion in Wisconsin Dells, Wisconsin. The women from the University of Wisconsin gathered for a Cookie Shine, shared memories and sang songs. From left, LINDSEY GEORGE, CAITLYN BEAUDRY, LESLIE STACHOWIAK, ANGELA STENKLYFT, KATHRYN KULLMAN ANDREWS, JENNIFER WASLH, LINDSAY SAARI WEIGELT, JACQUELINE GALLIGAN, REBECCA PALMER and MEGAN DILLS.



2 > Ohio Deltas celebrated their 50th class reunion at Ohio Wesleyan University. Front row left, ANN REUTER DOVE, PAT NITTSKOFF NAYLOR, CAROL REES EICKHOFF, MARIAN CAKE BRINK, JANE MCCABE SCHIERLOCH and ELAINE FATELY KEENER. Second row left, CAROLYN SHARPE BATTY, HOPE HAINER METZGER, SYLVIA SANDERS STEVENS, CAROLYN MAXWELL CONTIS, SHIRLEY SHEPHERD SARGENT and JOANNE HLAVIN RITTER.



3 > Several Illinois Zetas from the classes of 1966 and 1967 gathered in Chicago to celebrate their many years of friendship and reminisce about their days in the sorority house at the University of Illinois. Seated from left, DENISE DAVLANTES JOHNSON and JANETTA MONCUR BRADLEY. Standing from left, JUNE KLASSEN LASH, GAYLE MCCULLOUGH FAZZINI, CAROL MILLER WRZESINSKI, VICTORIA LEA HANDWERK, JOAN WARBOLD BOGGS and DIANE EISELE.



4 > The 1957 Washington Alpha pledge class from the University of Washington celebrated their Golden Arrow status in La Conner, Washington. The women participated in a Cookie Shine, sang Pi Phi songs and shared memories.





Join us as Part of Arrowmont's Future

BY: KIMBERLY GEIB NEWMAN

Arrowmont shares an important and unique legacy with the Fraternity and is deeply grateful for the enthusiastic support of so many Pi Beta Phi members. We want to sustain and strengthen our relationship with all of you to honor our past and work together toward a mutually beneficial future.

Our Gatlinburg, Tennessee, campus is a link to our heritage and a dynamic resource for our future. State of the art studios, comfortable on-campus housing in a natural setting, talented instructors, visiting artists and engaged students from around the country come together in Gatlinburg to create an energetic, dynamic and creative community.

At Arrowmont, there are constant reminders of nearly 100 years of Pi Phi philanthropy. With a clear focus on enriching lives through art, we continue to provide the unique Arrowmont experience and art education the school is known for and to serve the students and the artists who come each year. So, you ask, since all this takes place in Gatlinburg, how am I supposed to be a part of it? Let us count the ways!

- **Complete a service project at Arrowmont.** For example, the Nebraska Gamma Chapter drives from Creighton University each year to do a service project at Arrowmont.
- **Have a spring new member class retreat and stay in the historic Red Barn.**
- **Plan a new member class reunion to Pi Phi & Friends Arts weekend in May.** Bring your daughter, mother, cousin or friend. Not an artist? The self-proclaimed non-artists among us are most amazed by what is accomplished in a weekend class with Pi Phi sisters.
- **Invite someone to share her Arrowmont experience with your chapter or alumnae group.** Arrowmont staff will help you locate a student or artist instructor to conduct a program.
- **Provide a local scholarship for someone to attend an Arrowmont workshop.** Give a week at Arrowmont as a special gift to a local teacher, deserving collegian or retiree.
- **Make a gift.** At Arrowmont, every gift makes a difference. Friends of Arrowmont and Signature Circle contributions help Arrowmont provide life-changing, hands-on art experiences for adults and children from all walks of life and from all over the country.
- **Consider a creative fundraiser for your alumnae group or chapter to support Arrowmont.**

Arrowmont Contact Information

Web site: www.arrowmont.org
e-mail: info@arrowmont.org
Phone: (865) 436-5860

For Pi Phi-specific information about Arrowmont visit, www.arrowmont.org/pi-beta-phi.html.

*Thank you to the generous
Pi Beta Phi alumnae who
funded these pages.*

From Tradition to Innovation: Enriching Lives Through Art

Organized by Martha Connell, Arrowmont board of governors member and nationally known curator, this exhibition showcases selections from the school's permanent collection of artwork at the Atlanta Hartsfield International Airport. If you are traveling to Atlanta, visit concourse T to view the outstanding work by artists affiliated with Arrowmont. The summer issue of *American Woodturner* featured a three-page spread about the exhibition, highlighting the outstanding examples of turned wood objects and Arrowmont's influence in the arena of woodturning.

Fiber: It's not Just for Breakfast Anymore

In celebration and commemoration of the 1912 creation of the Pi Beta Phi Settlement School, Arrowmont will curate and present an exhibition at the Knoxville Museum of Art. Offering a fresh look at fiber and textile arts, the exhibition will document the impact that craft education at Arrowmont has had on the studio craft movement. This important exhibition will highlight the pivotal role Arrowmont has played and continues to play in introducing new methods, forms and materials to an audience of national and international students. The exhibition will illustrate the collaboration between Pi Beta Phi, University of Tennessee and Arrowmont. It draws on the history of the Settlement School, the evolution to summer craft workshops and the creation of Arrowmont School of Arts and Crafts.

New Pi Beta Phi Board Members

Arrowmont welcomes the following Pi Phis to the board of governors: Grand President MARY LOY TATUM, Oklahoma Beta; Grand Vice President Alumnae CINDY RICE SVEC, Kansas Beta and Director Philanthropy ANN CRIGGER SHAW, Arkansas Alpha.

From Pi Beta Phi to Arrowmont

"Bringing Education and Economic Development to the Great Smoky Mountains: 1920–2004" is a digital collection and series of essays written about the history of Pi Beta Phi Settlement School and Arrowmont School of Arts and Crafts. This site was created through a grant received from the Institute of Museum and Library Services. Visit the site at www.lib.utk.edu/arrowmont.





“Supporting the PAC is a proactive position on ensuring a bright future for all Greek Organizations. My membership in Pi Beta Phi has encouraged me to give back, to assist others and I believe the PAC is a valuable organization striving to meet the needs of all organizations.”

— *Director Finance/Housing*
BRENDA BUTLER, *Nebraska Beta*

Brenda is Pi Beta Phi’s Finance Committee representative for the Fraternity and Sorority PAC.

How Can Pi Beta Phi Members Support FSPAC?

Register with the Capital Fraternal Caucus

Receive periodic e-mail updates about our efforts and how you can help. By registering, you help us track the success of the fraternal grassroots movement. Register today at www.fraternalcaucus.com. Please note, your e-mail address will not be sold.

Contact your Legislators Using the CFC Facebook Application

Once you enter your address, a letter-writing tool will prompt you to contact your representative and senators. It will take less than five minutes! Use the Petition Your Congressman Facebook application for your voice to be heard on Capitol Hill!

Fraternity and Sorority Political Action Committee

What is the Fraternity and Sorority Political Action Committee (FSPAC)?

It’s a group established to develop and maintain a Greek presence in Washington, D.C., which includes the North-American Interfraternity Conference (NIC) and the National Panhellenic Conference (NPC). Formed on March 1, 2005, the FSPAC is the largest Political Action Committee (PAC) focused solely on higher education issues. The PAC has made contributions to a bipartisan slate of more than 100 candidates in the first four years of operations, and more than 90 percent of those candidates won their elections. In 2006, the FSPAC helped support the election of three sorority women in their first runs for the House of Representatives and the Senate.

Why do we need a PAC?

For a number of years, fraternity and sorority leaders have been working together to build a positive presence in Washington helping improve the fraternal experience we offer to our members. A logical extension of those efforts is this PAC, which seeks to provide financial aid to campaigns of federal office candidates (House, Senate and president) who support objectives of fraternity life. The PAC supports candidates, both Greek and non-Greek, who have demonstrated a record of support for Greek policy causes or are involved with committees with jurisdiction over issues of concern to Greeks. The PAC is bipartisan and complements our lobbying efforts each April.

What is our current legislative focus in Washington?

More than 250 Greek student and alumni leaders went to Capitol Hill in April lobbying Congress to pass the Collegiate Housing and Infrastructure Act (H.R.1547/S.781). Pi Beta Phi students and alumnae leaders joined this effort in conducting more than 400 Congressional visits in a single day with a goal of reaching 218 sponsors in the House (a majority) and 40 in the Senate. As of October, there are 168 sponsors in the House and 23 in the Senate.

Contribute to the Fraternity and Sorority PAC

More than \$200,000 has been raised this year toward the \$400,000 goal, and Pi Beta Phi ranked 30 of 50 in donations. Pi Beta Phi has the opportunity to become a leader in the Greek world by supporting the efforts of the Fraternity and Sorority PAC. Visit www.fratpac.org to view the current financial support by each Greek organization or to make a donation.

The A List

PI BABY PHI

Everything for Your Little Angel

Shall We Dance?*

Because every little girl needs a wine and blue tutu!
www.claireztutus.etsy.com
CLAIRE O'CONNELL CAHILL,
Washington Alpha

Every Time a Bell Rings ...

Give your littlest angel her first pair of wings. This onsie comes with removable angel wings.
www.pibetaphi.org/store

Rub-a-Dub-Dub*

Not only are these bath products made with organic products, they smell great too!
www.favorco.com
ASHLEY HOLDEN, Texas Beta

Art from the Heart*

Hand painted plates for every occasion. Enter PIPHI in the coupon code and receive 10 percent off your entire order!
www.timree.com
TIMREE GOLD, California Iota

What's in a Name?*

Personalized onsies and burp cloths for your special arrival.
www.maureenadams.com
MAUREEN WILSON ADAMS,
Texas Delta



* The starred items were created by Pi Phis! For more information about the products featured, or to learn about more Pi Phi-made products, visit www.pibetaphi.org. *The Arrow* always welcomes Pi Phi-made products for possible inclusion in the "The A List." Please e-mail JENNY WHITTON, editor@pibetaphi.org, for more information.

Directory



The 2009–2011 Grand Council, directors and appointed officers.

Former Grand Presidents

Carolyn Helman Lichtenberg, Ohio Alpha
Jo Ann Minor Roderick, Oklahoma Beta
Beth van Maanen Beatty, Texas Gamma
Sarah Ruth Mullis, South Carolina Alpha
Emily Russell Tarr, Texas Beta

Officers Emeriti

Grand President Emeriti –
Jean Wirths Scott, Pennsylvania Beta
Grand Treasurer Emeriti –
Orpha O'Rourke Coenen, Indiana Delta

Grand Council

Grand President –
Mary Loy Tatum, Oklahoma Beta
Grand Vice President Collegians –
Susan Kingsley Robinson, Missouri Alpha
Grand Vice President Alumnae –
Cindy Rice Svec, Kansas Beta
Grand Vice President Communications –
Diane Bielman, California Eta
Grand Vice President Finance –
Rae Wohlhueter Maier, Kentucky Beta
Grand Vice President Membership –
Paula Pace Shepherd, Texas Epsilon
Grand Vice President Programming –
Linda Noel Ibsen, Colorado Beta

Directors/Specialists

Director Membership – Tina Rivard,
Pennsylvania Theta
Director Extension – Ana Mancebo Miller,
Texas Beta
Director Finance/Housing – Brenda Butler,
Nebraska Beta
Director Philanthropy – Ann Crigger Shaw,
Arkansas Alpha

Regional Directors/Specialists

Alumnae Region One

Director – Candace Turner Dressler, Alberta Alpha

Membership Specialist – Nadia Husbands Smid,
Ontario Alpha

Programming Specialist – Lisa Doll Tovar,
Connecticut Alpha

Alumnae Region Two

Director – Sande Schweier Ullmann,
Oregon Gamma

Membership Specialist – Marilyn Smith Rowell,
Alabama Alpha

Programming Specialist – Katie Schwie Perrine,
Tennessee Delta

Alumnae Region Three

Director – Julie Talley Hooton, Michigan Alpha
Membership Specialist – Kathryn Palacio,
Illinois Beta-Delta

Programming Specialist – Monica Diaz-Greco,
Ontario Alpha

Alumnae Region Four

Director – Marla Neelly Wulf, Kansas Beta
Membership Specialist – Rebecca Brannen Lasse,
Florida Epsilon

Programming Specialist – Audrey Miller
Pennings, Arkansas Alpha

Alumnae Region Five

Director – Maja Tanaka Berge, Oregon Alpha
Membership Specialist – Ashlee Christofferson,
Utah Alpha

Programming Specialist – Marnie Lee,
Alberta Alpha

Alumnae Region Six

Director – Patty Davisson Brown, Kansas Beta
Membership Specialist – Lisa Rede Roman, New
Mexico Beta

Programming Specialist – Toni Martinovich,
California Eta

Collegiate Region One

Director – Alison Veit Heafitz, Illinois Zeta
Chapter Operations/Adviser Specialist –
Catherine Roosevelt, Michigan Beta

Financial/Housing Specialist –
Allison Harvey Griffin, Virginia Theta
Membership Specialist – Colleen Briley,
Pennsylvania Epsilon

Programming Specialist – Jody Morse Al-Saigh,
New York Alpha

Risk Management/Policy Specialist –
Alexis Janda, Nebraska Gamma

Collegiate Region Two

Director – Leisa Ebeling Lowrey, Ohio Eta
Chapter Operations/Adviser Specialist –
Melissa Malone Colvin, Virginia Theta

Financial/Housing Specialist – Elizabeth
Van Buren Kiss, Iowa Gamma

Membership Specialist – Jessica Donda Ledbetter,
Michigan Alpha

Programming Specialist – Pamela Kaufmann
Adair, Ohio Alpha

Risk Management/Policy Specialist – Cathy
Hosier Palmer, Indiana Zeta

Collegiate Region Three

Director – Cara Ballard Sutcliffe,
Illinois Beta-Delta

Chapter Operations/Adviser Specialist –
Suzanne Gill Kriz, Illinois Eta

Financial/Housing Specialist – Ellen Ferringer,
Indiana Gamma

Membership Specialist – Jill Mackey Carrel,
Indiana Gamma

Programming Specialist – Caton Metzler Bredar,
Illinois Beta-Delta

Risk Management/Policy Specialist – Jessica
French, Ontario Alpha

Collegiate Region Four

Director – Julie Carney, Texas Beta

Chapter Operations /Adviser Specialist –
Peggy Malone, Georgia Alpha

Financial/Housing Specialist – Kathryn Bart
Autry, Georgia Alpha

Membership Specialist – Sommer Frazier,
Oklahoma Beta

Programming Specialist – Jennifer Cauldwell,
Virginia Delta

Risk Management/Policy Specialist – Kathy
Wager Ewing, Alabama Gamma

Collegiate Region Five

Director – Amy Strickland Dreller, Arizona Beta

Chapter Operations/Adviser Specialist –
Nancy Mossman McConnell, Nebraska Beta

Financial/Housing Specialist – Anne Jones
Wildeboor, Kansas Beta

Membership Specialist – Holly Aripoli Mosher,
Kansas Alpha

Programming Specialist – Stacey Warren,
Kansas Alpha

Risk Management/Policy Specialist – Colleen
Bolin Hochberg, Kansas Beta

Collegiate Region Six

Director – Suzanne Malone, Mississippi Beta
Chapter Operations/Adviser Specialist –

Holly Hannah Bergbower, Oklahoma Beta

Financial/Housing Specialist – Lisa Pithan
Sabatino, Oklahoma Alpha

Membership Specialist – Brenda Foster Huffman,
Texas Epsilon

Programming Specialist – Emory McGinnis
Eison, Mississippi Beta

Risk Management/Policy Specialist – Karen
Gunther, Ohio Epsilon

Collegiate Region Seven

Director – Heather Butler Skogen, Oregon Beta
Chapter Operations/Adviser Specialist – Carly Miller Giesbrecht, Alberta Alpha
Financial/Housing Specialist – Suzette Thompson Farrar, Colorado Delta
Membership Specialist – Britton Trabert, Iowa Gamma
Programming Specialist – TBD
Risk Management/Policy Specialist – Amy Hayes Knack, Wisconsin Delta

Collegiate Region Eight

Director – Karen Emberton, Kentucky Beta
Chapter Operations/Adviser Specialist – Kathleen Caldwell Kleinman, Arizona Alpha
Financial/Housing Specialist – Lauren Backhus Skinner, Arizona Alpha
Membership Specialist – Daphney Bitanga, California Eta
Programming Specialist – Felisa Matteucci, California Kappa
Risk Management/Policy Specialist – Elizabeth Carter, California Gamma

Appointed Officers

Fraternity Archivist and Historian – Frances DeSimone Becque, New York Alpha
Leadership Development Officer – Lisa Masters, Georgia Alpha
National Panhellenic Conference Delegate – Carol Inge Warren, North Carolina Beta
NPC First Alternate – Barbara McReynolds LaMaster, Kentucky Beta
NPC Second Alternate – Ashley Dye, Illinois Zeta
NPC Third Alternate – Linda Noel Ibsen, Colorado Beta
Parliamentarian – Janice Shrader Falk, Nebraska Beta
Risk Management Officer – Sarah Schoper Salazar, Texas Delta

Fraternity Committees

Canadian Philanthropies Chairman – Marilyn Clark, Ontario Beta
Carolyn Helman Lichtenberg Crest Award Chairman – Cindy Rice Svec, Kansas Beta
Convention Chairman – Cynthia Stringfield Provencher, Florida Beta
Holt House Committee Chairman – Jerilyn Price Simak, Illinois Theta
Legislative Committee Chairman – Kristin Noer Olson, Indiana Delta
Music Committee Co-Chairman – Jane Bony Heiserman, California Delta, and Marian Hauke Thom, Oregon Gamma
Nominating Committee Chairman – TBD

Pi Beta Phi Headquarters

1154 Town & Country Commons Drive
Town & Country, Missouri 63017
Phone: (636) 256-0680
FAX: (636) 256-8095
E-mail: Headquarters@pibetaphi.org
Web site: www.pibetaphi.org
Executive Director – Juli Holmes Willeman, Iowa Beta
Assistant Executive Director – Katey Newell Hobbs, Missouri Alpha
Fraternity Controller – Susan Mertz
Director of Human Resources – Margo Wilton Lesser, California Gamma
Director of Marketing & Communications – Wendy Woolard Drochelman, Missouri Alpha
Arrow Editor – Jenny Whittom, Missouri Gamma
Director of Member Services – Erika Breedlove, Missouri Alpha
Director of Programming – Shawn Eagleburger
Director of Information Technology – Tim Steele
Internal Legal Counsel – Michelle Murrell Willbanks, California Eta
Pi Phi Express – (800) 322-1867

Consultants

Leadership Development Consultants – Allison Commings, Kentucky Gamma; Natasha Larrinaga, Texas Epsilon; Sarah Mitchell, North Carolina Delta; Lara Omps, West Virginia Alpha; and Caitlin Pierce, Missouri Gamma
Resident Leadership Development Consultants – Stephanie Baysinger, California Nu; Maureen Licursi, Ohio Beta; Tracie Nygaard, Oregon Gamma; Kylie Olson, Oklahoma Beta; and Casey Pola, Maine Alpha

Holt House

402 E. First Avenue
Monmouth, Illinois 61462
Phone: (309) 734-3988
Curator – Denise Turnbull, Illinois Alpha
Hours – Wednesday and Friday, 9 a.m.–5 p.m.
Other times by appointment only.

Fraternity Insurance Representatives

Property and Liability Insurance
MJ Insurance, Inc., Sorority Division
P.O. Box 50435, Indianapolis, Indiana 46250
Phone: (888) 442-7470
Web site: www.mjinsurance.com/sorority

Interim Medical Insurance

Garity Associates Brokerage Insurance Agency, Inc.
P.O. Box 8, Accord, Massachusetts 02018
Phone: (800) 234-9488

Pi Beta Phi Fraternity Housing Corporation

FHC Board

President – Eileen O'Neil Grigutis, Kentucky Beta
Vice President – Julie Cairone, Washington Gamma
Treasurer – Rae Wohlhueter Maier, Kentucky Beta
Secretary – Cindy Rice Svec, Kansas Beta
Board Members – Lyn Arnot Clark, Texas Alpha; Leah Cero Fitzgerald, Kansas Beta; Kimberly Klitz Maez, Arizona Gamma; and Mari Lou Psihogios Diamond, Oregon Alpha

Fraternity Housing Corporation Office

1154 Town & Country Commons Drive
Town & Country, Missouri 63017
Phone: (636) 256-0680
FAX: (636) 256-8095
e-mail: fhc@pibetaphi.org
Interim Executive Director – Juli Holmes Willeman, Iowa Beta

Pi Beta Phi Foundation

Board of Trustees

President – Peggy Wilson Lawrence, Tennessee Gamma
Vice President – Karen Sulley Thorn, Nebraska Beta
Treasurer – Kathy Swinea Nevill, Tennessee Gamma
Secretary – Bimi Lane Huebner, New Mexico Beta
Trustee – Tammie Beckwith Schallmo, Illinois Zeta
Ex-Officio Members – Mary Loy Tatum, Oklahoma Beta; Linda Noel Ibsen, Colorado Beta

Pi Beta Phi Foundation Office

1154 Town & Country Commons Drive
Town & Country, Missouri 63017
Phone: (636) 256-0680
FAX: (636) 256-8095
e-mail: fndn@pibetaphi.org
Executive Director – Teri Champion, CFRE

Foundation Committees

Alumnae Continuing Education Scholarship Committee Chairman – Betsy Beese Sheridan, Texas Gamma
Emma Harper Turner Fund Committee Chairman – Kim O'Brien, Ohio Zeta
Graduate Fellowship Committee Chairman – Carole Munroe Howard, Oregon Beta
Undergraduate Scholarship Committee Chairman – Cathy Birch Daniel, California Eta

Arrowmont Schools of Arts and Crafts

P.O. Box 567, 556 Parkway
Gatlinburg, Tennessee 37738
Phone: (865) 436-5860
FAX: (865) 430-4072
Web site: www.arrowmont.org
Director – David Willard

Pi Phi Express



E



A

B



D

C



F



G



H

I



J

K

L

- | | | | |
|-------|------|--|---------|
| A. | X850 | Heart Limoges Box
<i>Hand-painted</i> | \$140 |
| B. | X860 | Ribbon Limoges Box
<i>Hand-painted</i> | \$140 |
| <hr/> | | | |
| C. | X878 | Latte Mug
<i>New!</i> | \$12 |
| D. | X879 | Travel Mug
<i>New!</i> | \$16 |
| E. | X883 | Stainless Steel Water Bottle
<i>New!</i> | \$18 |
| <hr/> | | | |
| F. | X608 | "Angel Sweets & Arrow Treats"
<i>New! A tribute to the Pi Beta Phi Cookie Shine! More than 175 sweet recipes.</i> | \$19.95 |
| G. | X866 | Greek Letter Cookie Cutters
<i>New! Gift boxed with free recipes on back cover.</i> | \$12 |
| <hr/> | | | |
| H. | X262 | White Hooded Sweatshirt
<i>New! Unisex fit. Appliquéd Greek letters with embroidery.</i> | \$45 |
| I. | X407 | Touchdown Pants
<i>Capri length. Can be scrunched or cuffed.</i> | \$34 |
| <hr/> | | | |
| J. | X303 | Black Polar Fleece Jacket
<i>A true classic</i> | \$60 |
| K. | X760 | Greek Letter Scarf
<i>Greek letter intarsia design</i> | \$35 |
| L. | X810 | Polar Fleece Throw
<i>Embroidered Greek letters</i> | \$24 |

FREE!

Gift With Purchase!

Market Tote FREE with any \$100 purchase. A \$15 value!

Hurry, while supplies last!



A.	MD311	Garnet & Aquamarine Badge <i>10K gold</i>	\$250
B.	MD203	Crown Pearl Badge, Diamond Point <i>10K gold</i>	\$250
C.	MD400	Legacy Badge <i>10K gold</i>	\$150
D.	MD134	Large Lavalier <i>Sterling silver</i>	\$15
E.	PMD165	Angel Pendant <i>Sterling silver</i>	\$25
F.	MD175	Crest on Disk Pendant <i>Sterling silver</i>	\$35
G.	MD158	Official Crest Ring <i>Sterling silver, garnet accent</i>	\$125
H.	MD141	Arrow Ring <i>Sterling silver</i>	\$100
I.	PMD198	Carnation Ring New! <i>Sterling silver, cubic zirconia accent</i>	\$35
J.	MD174	Heritage Necklace <i>Sterling silver</i>	\$400
K.	MD206	Pearl Necklace <i>Sterling silver</i>	\$85
L.	MD207	Big/Lil Sis Necklace New! <i>Sterling silver, cubic zirconia accent</i>	\$55
M.	PMD223	Hinged Arrow Wrap Bracelet <i>Sterling silver</i>	\$100
N.	MD221	Beaded Bracelet <i>Sterling silver</i>	\$60
O.	MD225	Tempo Bracelet New! <i>Sterling silver</i>	\$120



To view our
complete line visit
www.pibetaphi.org/store
or call (800) 322-1867

In Memoriam

Because of space constraints, *The Arrow* will only print the entirety of an obituary for a former grand president. If you know a sister who has died, please inform Headquarters. Only those names accompanied by a published notice will be listed in *The Arrow*. Published notices include a newspaper obituary, a funeral program/prayer card, a listing in a college/university alumnae newsletter, or obituaries from newspaper Web sites. Attach the article and e-mail to Alison Bauer, alison@pibetaphi.org, or mail to Pi Beta Phi Headquarters.

In Memoriam lists the name, initiation year, and month and year of each member who has died.

Alabama Alpha

Sue McNamee Dominick
1945; May 2009

Emily Lokey Fincannon
1948; May 2009

Elizabeth Jackson Pugh
1936; June 2009

Arizona Alpha

Carol Williams Torrey Waldrop
1958; July 2009

Arkansas Alpha

Mary Tomlinson Beard
1946; June 2009

California Gamma

Antonia Pallette Mallory
1952; April 2009

California Zeta

Mary Wheeler Rowe
1957; April 2009

Colorado Alpha

Vera Kunz Schrepferman
1946; April 2009

Colorado Gamma

Judy Cutler Stickney
1960; July 2009

Florida Beta

Margaret Baugh Beery
1943; June 2009

Florida Gamma

Barbara Brown Shea
1941; April 2009

Georgia Alpha

Melinda Bailey Morgan
1982; July 2009

Idaho Alpha

Ann Bennett DeWitt
1986; May 2009

Illinois Alpha

Constance Hutchinson Hardin
2000; July 2009

Evelyn Peters Kyle
1930; October 2009

Illinois Epsilon

Virginia Simpson Burroughs
1935; July 2009

Jane Lewis Luers
1948; May 2009

Jill Breeding Pelling
1946; May 2009

Indiana Alpha

Kathryn Murphy Wolff
1935; May 2009

Indiana Beta

Christine Bayley Bennett
1981; May 2009

Lucretia Long
1936; April 2009

Indiana Delta

Maureen Mathews Roberts
1969; July 2009

Helen Eitel Rollins
1943; June 2009

Elizabeth Stewart Smith
1935; May 2009

Gini Champine Stegeman
1951; May 2009

Indiana Gamma

Carolyn Kendall Forthofer
1939; April 2009

Iowa Alpha

Mary Reiss Cavanah
1964; June 2009

Iowa Gamma

Mary Rothacker Sheffels
1945; December 2008

Iowa Zeta

Constance Hudson Deacon
1948; May 2009

Ruth Aurner Tabb
1932; January 2009

Kentucky Beta

Catherine Chavis Pelfrey
1976; June 2009

Maryland Alpha

Mary Louise Wise Franz
1945; June 2009

Massachusetts Alpha

Joan Peiser Tomko
1942; March 2008

Michigan Alpha

Mary Hart Hallock
1936, affiliated Michigan Beta;
July 2009

Michigan Beta

Mary Helen Sherburne Gilbert
1964; May 2009

Michigan Gamma

Elizabeth Evans Benedict
1965; May 2009

Mary Watson Dixon
1957; July 2009

Sally Sharp Werner
1956; June 2009

Missouri Beta

Barbara Knodel Barrow
1942; May 2009

Montana Alpha

Jean Chestnut Armstrong
1942; December 2008

Nebraska Beta

Virginia Geister Hardgrove
1936; December 2008
Janet Spiker Spencer
1968; April 2009

Nevada Alpha

Leota Davie Fex
1940; May 2009

New York Alpha

Leatrice Haynes McClernan
1944; May 2009

New York Delta

Roxanne Tanner Bell
1944; July 2009
Betsy Small Schrader
1941; May 2009

North Carolina Beta

Lucy Dodd Eastham
1942; May 2009

Ohio Alpha

Marilyn Hummell Matheny
1945; June 2009

Ohio Beta

Jean Blake Carr
1930; January 2009
Elaine Judy Hopkins
1944; July 2009
Mary Nudd Knowlton
1942; May 2009
Janet Riley Smith
1942; January 2009

Ohio Delta

Jayne Bodenbender Dayer
1945; June 2009
Jeanine Shepherd Swaim
1959; April 2009

Oklahoma Alpha

Patty Price Castle
1943; June 2009
Sally Merrill Ervin
1960; May 2009

Oklahoma Beta

Jeanette Winkcompleck Clemons
1972; April 2009
Frances McMahan Mock
1951; May 2009

Ontario Alpha

Jane Atkey
1957; June 2009

Oregon Alpha

Betty Busch Caldwell
1945; May 2009

Pennsylvania Gamma

Joan Thatcher Tiboni
1942; June 2009

South Carolina Alpha

Berenice McBride Howard
1931; June 2009

Tennessee Alpha

Marguerite Bacon Hickey
1931; July 2009

Texas Alpha

Barbara Wheeler Cullum
1946; June 2009
Laura Ford
1965; December 2008

Texas Beta

Patsy Sweeney Krampf
1955, affiliated Oklahoma
Alpha; June 2009
Floreid Francis Stevens
1956; May 2009

Texas Delta

Emily Ann Stuller
2007, affiliated Texas Zeta;
June 2009

Vermont Beta

Patricia Page Terrill
1940; June 2009

Virginia Alpha

Betty L. Babcock
1941; May 2009
Bonnie Elledge Baxter
1934; June 2009
Kathryn Gallagher Bevington
1946; July 2009
Jane Scott Ward
1951; November 2008
Patsy McGregor Wilkerson
1937; June 2009

Washington Alpha

Lois Gunderson Elander
1949; June 2009
Jean Severyns Wall
1935; May 2009

Washington Gamma

Phyllis Anderson Card
1948; April 2009

Wisconsin Beta

Elizabeth Barber Frost
1935; June 2009
Dorothy McCullough Rodrian
1940; June 2009

Wisconsin Gamma

Marjorie Deetz Early
1944; April 2009

News & Notes

Council Comments Available Online!

Council Comments, a newsletter summarizing Fraternity news and events from the most recent Grand Council meeting, is now available to all members online. Visit www.pibetaphi.org and log in to eSisters for the latest issue.

Foundation Scholarship Applications Online!

This year, the Pi Beta Phi Foundation has made applying for scholarships and fellowships even easier and more efficient by introducing an online process. This easy-to-use format saves time and money. To learn more about the application process or to apply, visit www.pibetaphifoundation.org.

Arrow Submissions

Pi Beta Phi encourages members to submit stories, news or ideas to *The Arrow*. Submissions may be mailed to Headquarters or e-mailed to the editor, JENNY WHITTOM at editor@pibetaphi.org. When preparing your submissions, please keep in mind:

- Photos must have a resolution of at least 300 dpi or be at least three megabytes and should be sent as a separate TIFF or JPEG file. Pictures placed in Microsoft® Word documents or online albums such as Facebook, Flickr, Kodak EasyShare® Gallery, etc. are not print ready. Additionally, photos from cell phones cannot be printed in the magazine.
- Professional photos, not proofs, are accepted with permission and attribution to the photographer.
- Photos should be accompanied by a small separate description. Include the names (first, maiden and last) of all individuals in the photo, as well as chapter of initiation. Be sure to indicate the position of each person in the photo.
- We do not print photos showing members, collegiate or alumnae, with alcoholic beverages or cups/glasses of any kind. Photos showing cluttered dining tables or glassware that may be construed as containing alcohol will not be printed.

We would love to print everything we receive, but unfortunately space is limited. If your submission is not published, please try again!

Pi Phi Wants YOU!

Are you a loyal Pi Beta Phi looking to contribute to the Fraternity's ongoing success? Do you have professional experience in recruiting or training and development?

The Fraternity has a great opportunity for you. We are looking for qualified candidates to serve on the international Leadership and Nominating Committee. The committee is expanding in size and scope and we want to hear from you!

The Leadership and Nominating Committee, formerly "Nominating Committee," is a team of nine alumnae who identify and recommend other Fraternity members for appointment or election to volunteer positions within the Fraternity. The committee presents a compelling case to support members' appointments or elections and facilitates training and development of Fraternity officers. The committee also cultivates leadership as well as identifies potential volunteers to serve in appointed and elected capacities. Board qualifications include:

- Past service as international or regional officer, specialist or committee chairman
- Attendance at a minimum of two Fraternity conventions
- Broad Fraternity knowledge
- Dues-paying alumnae member
- Ability to work effectively as a team member
- Experience in human resources including talent management, training and development is desirable

Travels includes: Fraternity workshops, conventions and events as needed at the expense of the Fraternity. If you or someone you know is interested, e-mail a resumé by December 1, 2009, to GVPCOM@pibetaphi.org.

Flying South for the Winter?

Are you an alumna who winters in a warmer climate? Stay connected to Pi Phi no matter where you are! Seasonal members should identify themselves to alumnae groups in both their home and seasonal area. Contact an alumnae regional specialist for more information or visit the Pi Beta Phi Web site, www.pibetaphi.org.

Have you moved or changed your name?

Help us keep our database updated. Edit your member profile online at www.pibetaphi.org, or send this form to:
Pi Beta Phi Headquarters 1154 Town & Country Commons Drive, Town & Country, Missouri 63017.

\$25 Check, payable to Pi Beta Phi Fraternity, for Fraternity Alumna Dues enclosed.
Dues are not tax deductible for federal tax purposes.

For office use: Ref # ___ Region ___ Amount \$ ___ Check # ___ Code AID

Initiated Name (first/middle/maiden)

Name (first/maiden/last)

New Address

City/State/Zip

Phone Number

E-mail Address

Chapter and Year of Initiation

If you are an officer in the Fraternity, please give your title.



Congratulations!

Pi Beta Phi Executive Director JULI HOLMES WILLEMANN, Iowa Beta, recently was accredited as a certified association executive (CAE) by the American Society of Association Executives. The CAE is the highest professional credential in the association industry, and less than five percent of all association executives have received this honor. To obtain this title, Juli took an exam on all aspects of association management. She must renew the certification every three years through additional studies and leadership activities. CAEs must have demonstrated a high level of association knowledge, ethical fitness and leadership. The CAE is a difficult title to obtain, and Pi Beta Phi is proud to have her as executive director.



Friend of Distinction is Honored

The National Law Journal-Legal Times recently named Patton Boggs partner Kevin O'Neill one of "40 Under 40: Washington's Rising Stars." Kevin is on the Fraternity and Sorority Political Action Committee, which fundraises for Greeks in Congress, Greeks running for Congress for the first time and others in Congress who have supported issues to improve the student experience of Greek life. He was honored with this award for his impressive lobbying and his role in creating Patton Boggs' podcasts and radio show. He was one of two lawyers from the lobbying profession to be chosen for the 40 under 40, and he is the youngest member of Patton Bogg's management team. Kevin was honored at the 2007 Convention as one of Pi Beta Phi's Friends of Distinction, which is awarded to nonmembers who have gone above and beyond the expected to support Greek initiatives. He has not only been a friend to the Fraternity but a friend to the Greek world as well.





Pi Beta Phi Fraternity
1154 Town & Country Commons Drive
Town & Country, MO 63017

CHANGE SERVICE REQUESTED

NONPROFIT
ORGANIZATION
U.S.
POSTAGE PAID
DULLES, VA
PERMIT NO. 490

You weren't just a Pi Phi in college ...



you *are* a Pi Phi for life!



Stay connected with Pi Phi and continue receiving your hard copy of *The Arrow* by paying your annual Fraternity alumna dues. Your \$25 dues may be paid by contacting your local alumnae group, visiting the Pi Beta Phi Web site or filling out the form on the inside cover and mailing to Headquarters.