

SUMMER 2004

The **Arrow** *of Pi Beta Phi*

DIFFERENT
yet the same

Dear Pi Phis,

In 1867, just two years after the Civil War ended, few women attended college. The first co-educational colleges had only been open for three decades.

Being among early collegians, our founders were full of idealism and wanted to bond with other women at Monmouth. Since nothing on campus filled this need, Pi Beta Phi was born. Throughout its 137-year history, Pi Beta Phi has had many defining moments:

- The day our Founders marched into chapel with gold arrows in their hair
- The 1910 Swarthmore convention when members voted to begin a Settlement School in Gatlinburg
- The 31 years that Amy Burnham Onken served as Grand President
- The term that Jean Wirths Scott served as National Panhellenic Conference Chairman — a once-in-a-lifetime opportunity
- The building of our Headquarters building



Grand President Emily Russell Tarr

If you stop and think about it, I'll bet Pi Phi has helped define your life —

- When you pledged — WOW, what a relief that was!
- Watching soap operas, "ER" or reality TV with sisters
- As you were a bride or bridesmaid with Pi Phis in the wedding party

Friends, these are defining moments of our lives.

Pi Phis are great friends to hang out with in good times, but they also provide much more than a shoulder. Through broken relationships, losing family members, devastating personal experiences — Pi Phis are always there for you.

I hope that as you read this issue you will learn more about what Pi Beta Phi is doing to live up to our tag line "Friends and Leaders for Life." Think about calling a sister just to say "hi" or reconnect with someone you've been thinking about from your pledge class.

If we as members continue to invest in Pi Phi, then the Fraternity we are building will be as successful by today's standards as IC was in 1867. The Fraternity continues to invest in programming, technology, Headquarters staff, leadership and, most importantly, our members. Because, after all, our members really are the greatest asset of Pi Beta Phi.

Have a safe summer!

Ring ching,

A handwritten signature in cursive script that reads "Emily".

PI BETA PHI ANNOUNCES CHAPTER ON NORTH CAROLINA STATE UNIVERSITY CAMPUS

The Panhellenic Association of North Carolina State University, in Raleigh, has invited Pi Beta Phi to colonize a chapter. Registration for colonizing recruitment will begin Oct. 1 and recruitment for women of all class ranks will take place Oct. 14–17. If you know of a young woman attending NC State, please complete and send a Recruitment Information Form (RIF) to Grand Vice President of Membership Barbara McReynolds LaMaster at GVPM@pibetaphi.org

EDITOR

Diane Balogh
editor@pibetaphi.org

ASSISTANT EDITOR

Sara Bell English
thearrow@pibetaphi.org

COPY DEADLINES

Fall — July 1
Spring — November 1
Summer — April 1

PI BETA PHI HEADQUARTERS

1154 Town & Country Commons Drive
Town & Country, Missouri 63017
(636) 256-0680
FAX (636) 256-8095
centraloffice@piphico.org
www.pibetaphi.org

**ADDRESS CHANGES AND
IN MEMORIAM**

Pi Beta Phi Headquarters
1154 Town & Country Commons Drive
Town & Country, Missouri 63017

PI BETA PHI FRATERNITY

ΠΒΦ

Founded 1867

FOUNDERS

Emma Brownlee Kilgore
Margaret Campbell
Libbie Brook Gaddis
Ada Bruen Grier
Clara Brownlee Hutchinson
Fannie Whitenack Libbey
Rosa Moore
Jennie Nicol, M.D.
Inez Smith Soule
Fannie Thomson
Jennie Horne Turnbull
Nancy Black Wallace

Features

- 6 Different, Yet the Same**
Learn about some of Pi Phi's most diverse chapters
- 32 New Graduate Consultants**
Meet the 2004–2005 Graduate Consultants team

Departments

- 4 From the Reader**
- 5 Fraternity News**
- 12 Foundation News**
- 16 Arrowmont**
- 18 Alumnae News**
- 24 Reunions & Anniversaries**
- 25 Diamond Arrow Recipients**
- 26 Collegiate News**
- 34 Remember**
- 36 Recruitment Redefined**
- 38 Chapter Membership Chairmen**
- 42 Recruitment Information Form**
- 43 News and Notes**
- 45 Masters of Design Jewelry**
- 46 In Memoriam**

On the Cover:

This photo composite is made up of photographs of a variety of Pi Beta Phi members. The words woven throughout the photo are the Pi Phi founding values.



Member College Fraternity Editors Association

The Arrow of Pi Beta Phi is published by Pi Beta Phi Fraternity, 1154 Town & Country Commons Drive, Town & Country, MO 63017. POSTMASTER: Send address changes to *The Arrow of Pi Beta Phi*, 1154 Town & Country Commons Drive, Town & Country, MO 63017.

From the Reader

The Arrow invites comments about the magazine, its articles or any other topic of interest to our readers.

In order for your letter to be published, please include full name, address and chapter of initiation. Letters may be edited for style, clarity and length.

Send comments to:
1154 Town & Country Commons Drive
Town & Country, Missouri 63017
or e-mail thearrow@pibetaphi.org

FINDING TIME FOR ME

Editor's note: I received more than 40 requests for the free copies of Tracy Lyn Moland's book, "Mom Management," which were offered in last issue's cover story. The lucky winners are: Lisa Tipton McCoig, Virginia Gamma; Linda McReynolds Coffin, Missouri Alpha; Marisa Morgan Dallman, Kansas Alpha; Anna Sohn Schoenbaum, Georgia Alpha; Dawn VanRyswyk Goodale, Iowa Beta; and Erin Glynn Woods, Iowa Zeta. See the message below from Tracy Lyn.

Thank you so much for the feature! I so enjoyed reading it and have been sharing it with everyone I know! I realized now that it is unfortunate that I didn't include my Web site (www.tracylynmoland.com) or e-mail (tracy@tracylynmoland.com) so that people could get in touch.

TRACY LYN SMITH MOLAND
ALBERTA ALPHA
CALGARY, ALBERTA, CANADA

As a wife whose husband is in his third year of optometry school, a full-time worker, and a mother of a 3-year-old, I would be extremely grateful to receive a book with time-management tips. Just reading the article in *The Arrow* gave me motivation to search for "me" time.

MIRANDA BROWN HOOKER
MISSISSIPPI BETA
OXFORD, MISSISSIPPI

This was a great cover story. I read it immediately and enjoyed it thoroughly. I am a stay-at-home mom of two boys. I am very involved in our local alumnae club and have been working to get younger Pi Phis involved in the Spokane chapter for the past four years.

CARLA LILES PERCIVAL
WASHINGTON BETA
SPOKANE, WASHINGTON

My Arrow came today — and I took some "time for me" to look at it. Thanks.

JOANNE MEADE LEWIS
OKLAHOMA BETA
TULSA, OKLAHOMA

These days I'm trying to "manage" my life as wife, mother of three, high school German teacher, Sunday school teacher, chief cook and bottle washer, chauffeur, laundress, social and activities secretary, assistant Brownie leader, home financial secretary and probably a multitude of other positions I've forgotten at the moment!

I enjoy reading *The Arrow* when it arrives and staying indirectly connected with Pi Beta Phi. Thanks for all you do!

SUSAN DRESSER MARSHALL
WISCONSIN GAMMA
PHILLIPS, WISCONSIN

My issue of *The Arrow* arrived this afternoon and your cover encouraged me to open it promptly. I was not disappointed and was thrilled to hear that a Canadian Pi Phi was being featured.

JENNIFER WATSON DURHAM
ONTARIO BETA
NOBLETON, ONTARIO, CANADA

As a very busy mother, pastor's wife, daughter, sister and full-time CPA, the article, "Finding Time for Me," was extremely timely. Although I am in the midst of my busy tax season, I read the article the day *The Arrow* arrived.

The entire issue was wonderful, as always.

LISA TIPTON McCOIG
VIRGINIA GAMMA
WINCHESTER, VIRGINIA

I truly enjoy these types of pieces in the magazine, along with the historical articles. Especially enjoyed the last page about Alice (Weber Mansfield Johnson). Thanks to all who put in their hard work on *The Arrow*.

MARISA MORGAN DALLMAN
KANSAS ALPHA
SHAWNEE, KANSAS

The Augusta, Georgia Alumnae Club was so happy to see the current *Arrow* pick up on our theme for the year — "Scoop Out Some Time for ΠΒΦ." We've used ice cream invitations to events, asking for an hour here, an hour there, for gatherings and activities. We think that's "Finding Time for Me!"

CAMILLA PHILSON HUMPHREY
SOUTH CAROLINA ALPHA
AUGUSTA, GEORGIA

Pi Phi Connects with *Young Alumnae*

The Fraternity continues to seek new ways to connect with its members. One segment of membership receiving particular attention in recent months has been women who have graduated within the last 10 years.

This group consists of more than 21,000 members worldwide, and most are focused on establishing careers, balancing families and finding their place in new communities.

Pi Beta Phi recognizes that in order to be a premier organization for women, it must restructure existing programs and create new ones. That is why three young alumnae events have been held this past year in New York City, Los Angeles and Atlanta. A total of more than 150 women have attended these three events.

Young women in these cities were invited to an informal gathering where

they were able to socialize with their peers and network professionally with other Pi Phis. Information about the area clubs and updates on Fraternity programming were distributed.

These events were created as a result of Pi Beta Phi's 2002 research that showed that women up to 10 years out of college wanted events with their own age group. Realizing that membership is a lifelong commitment, Pi Beta Phi is striving to be more relevant to all age groups and specifically trying to reconnect with young alumnae.

Plans are underway for future events beginning in July. If your club would like to co-sponsor an event in your city, please contact Director of Member Relations Wendy Woolard at 636-256-0680, extension 723, or wendy@piphico.org

RESEARCH & DEVELOPMENT THE PI PHI WAY

by Karen Shelton Chevalier, Grand Vice
President of Program Development

It has been years since the Fraternity has conducted a comprehensive review of its operations. For example, the Fraternity is currently using the chapter structure developed in 1971.

For that reason, Grand Council appointed five groups, called Thought Forces, to conduct research and development in five key areas. The Thought Forces are responsible for recommending changes, not implementing them. Their charge is to identify the steps to achieve the goals in the Fraternity's strategic plan and also bring the officer structures and measurements into alignment with the member development program, "Leading with Values."

Director of Collegiate Programming Bimi Lane Huebner, New Mexico Beta, chairs the Chapter Operations Thought Force, which will provide recommendations for new chapter officer structure and chapter reporting. The International and Local Structure Thought Force, chaired by Director of Membership Kim Barger, Oregon Alpha, will build on the work of the chapter operations groups to ensure Pi Phi's volunteer officer structure supports the chapter and alumnae club officers. Director of Alumnae Advisory Committees Michael Bettin, Utah Alpha, chairs the Chapter Standards of Excellence Thought Force; they will look at ways to measure and reward chapters. The New Models of Membership Thought Force, chaired by Sigma APP Annemarie Wilson, Kentucky Alpha, will research programs and support for all alumnae. Finally, Former Grand President Carolyn Helman Lichtenberg, Ohio Alpha, chairs the Talent Development and Placement Thought Force.

The 24 volunteers serving on the Thought Forces met at Headquarters in January for a mind-expanding kick-off weekend. A full list of the participants can be found on www.pibetaphi.org. The women are continuing to work via e-mail and conference calls.

Their research will extend to other Greek groups and non-profit organizations. If adopted by Grand Council, Thought Force recommendations will become the basis for Constitution and Statutes changes at Pi Beta Phi's 2005 convention.



Pi Phis enjoyed visiting with other young alumnae in Atlanta.



Alumnae from the Los Angeles area mingle at a Pi Phi event.

DIFFERENT, YET THE SAME

Think about the membership of the traditional Greek organization. The term “diverse” doesn’t spring to mind, does it? But, take a close look and you will find that Pi Beta Phi has some chapters that have a full spectrum of members.

Following are reflections from women from a variety of backgrounds. They candidly share their thoughts about their Pi Phi experiences.

One of the most diverse chapters is also one of our oldest — Ontario Alpha — located at the University of Toronto.

VARIED BACKGROUNDS

“I wanted to be in a sorority that would allow me to meet all kinds of new people and the fact that Pi Beta Phi seemed to have such a diverse variety encouraged me to join,”

Ontario Alpha Taryn McKinlay says. “It also made me aware that this chapter definitely didn’t have any

prejudices that I would come into conflict with later.”

Ontario Alpha, dubbed a mini United Nations, has members with ancestors from all around the globe — places like Ghana, Lithuania, China, Poland, South Korea and Great Britain. Their religions are just as varied.

“We all carry a tremendous amount of history with our life stories and that of our families,” Cecilia Jy says. “We are a true representation of expanding contemporary migration.”

“What stood out immediately to me was that Pi Beta Phi was full of individuals, diverse in background, culture and personality,” Ella Gruber says. “A great deal of my decision to

pledge Pi Beta Phi was after realizing that individuality of all kinds was embraced and encouraged, and every girl, in her own different way had something unique to offer.”

“I quite often feel as though I am the spokesperson for Ghanaians and

black people in general,” Chapter President Rashida Usman says. “It’s not a bad feeling, though. In actuality, I use it as an opportunity to debunk misconceptions that may exist in the mindsets of individuals. I have been the first black (African) friend to a few of the sisters who grew up in societies dominant of one race.

“When I was in St. Louis (attending the Leadership Academy), I spent quite a lot of time educating/informing most of the Pi Beta Phi presidents in attendance about where I was from. It was wonderful.” Rashida adds, “I hope to one day become a TGC [traveling graduate consultant] and educate Pi Phis everywhere about the importance of diversity.”

SIMILAR SISTERS

“It is the most interesting thing in the world when you find similarities with another sister of another race,” Ontario Alpha Sarah Bang says. “When you compare everything there really aren’t any real differences.

“I tend to have a very serious, business side to my personality and a fun-loving, out-going side, as well,” Sarah adds. “Pi Phi is similar in the sense that when it comes to the bureaucratic aspects of the chapter, the girls become assertive and



Ontario Alphas pose for a picture.

(continued on page 8)

When I applied to [University of] Richmond, I knew of its academic reputation, the social mores of its Greek organizations and, frankly, its reputation for the homogeneity of its students. However, a friend of my best friend was a Chinese-American student there. In the sea of blonde haired men and women, she was the diverse face of Richmond. Her enthusiasm reinforced my decision to attend the university. I had no idea that in a year, she and I would be pledging Pi Phi together.

Candidly, going into the process, I didn't think pledging a sorority was for me. I dove into it head first, with the rest of my class, just to give it a try. As I met the women of the seven chapters, I realized that despite the lack of ethnic diversity on campus, there was a definite difference in the culture of each sorority. What attracted me to Pi Phi was the genuineness of the women that I met. As the parties progressed to the final "preference" party, I was struck by the bond that these women had with one another. It was real.

On the surface, I appeared different due to my brown skin, but during spring break I noticed that ALL the women had brown skin! All kidding aside, I never viewed myself as different. I tried to expose sisters where possible to Indian food and some traditions. I lovingly introduced my family to all of my Richmond friends and Pi Phi sisters, and I sought to keep the lines of communication open.

Many of the students at Richmond, it seemed, didn't have to pay for college. I had to pay for half of it. I grew up with a very strong work ethic and knew that I would have to contribute financially. I think my Pi Phi sisters may have been surprised by that, or perhaps by the fact that my parents were immigrants from India and that they had an arranged marriage. That seemed to shock a few of the women. Some had separated, single, deceased or divorced parents. My parents are still married, and have been for over 37 years.

When I was in high school and college, I did feel as if I was, just based on my appearance, a spokesperson for India. I had limited experience with racism as a child; it was certainly something I never encountered at Richmond and definitely not with my Pi Phi Chapter. However, it was something that one who is not white is keenly aware of in America.

To this day, about 12 years after I was initiated, many of my closest confidants are Pi Phis. They are lifelong friends.

SUNEELA ARAS

Virginia Eta



Suneela Aras, right, poses with Virginia Eta Jennifer Matthews, center, and Michelle Thompson. All three work at Blackboard Inc., an education technology company based in Washington, D.C.



Suneela Aras, bottom left, celebrates at a wedding with her Pi Phi sisters.

COVER STORY

professional. When it comes to sister events and hanging out, the girls let loose and have fun.”

“One-on-one interaction within such a diverse group of girls teaches you about cultures, races and creeds on a deeper level,” Paulina Jarmula says. “Just being in this chapter can make a girl feel more worldly without ever having to leave the country.”

CULTURAL PRIDE

“All the girls in the house are proud of their different cultural backgrounds,” Ramona Kaminskas states. “I personally am very proud of being a Lithuanian, and the girls supported me and my cultural difference when they attended my Lithuanian folk dance concert last year. They made it the cultural event of the year, and the whole house came; it was the best time

I have had dancing, yet.”

“One of the fundamental values of my Chinese background is loyalty to family,” Jamie Au says. “Our dedication and unfailing support for each other as sisters of Pi Phi, through thick and thin, reflects a loyalty to a family, as well. We are not tied by blood, but by the chain of sincere and whole-



Showing their team spirit are: Ontario Alphas Alison Henthorn, Crystal Pang, Rashida Usman and Mallory Lee-Gilson.

hearted friendship.

“I’ve learned so much about various cultures and traditions through my Pi Phi sisters,” Jamie adds.



Kathryn Kobbermann, right, is a member of the Missouri Gamma pledge class of 1995.

I was the first in our chapter and at our school, Drury University, to use a wheelchair. Many of the chapter members had never been around anyone with a disability and it was a great learning experience for them.

I was lucky to be part of a chapter that was not only open-minded, but did not prejudice, so therefore I don’t feel like there were any misconceptions before us meeting. I can say that going through rush [recruitment] was an exciting time for me and to be honest I was rushed by many more people than typical. Needless to say, I felt very welcome and loved getting to meet so many girls on the first night!

I would like to think that my sisters can look back on the experiences we shared and realize that although we all come in different packages, we are still similar in so many ways. We all share the same wonderful qualities and characteristics that the women of Pi Beta Phi seek out during rush and then continue to help cultivate as we evolve and mature throughout our college years and as alumnae.

KATE KOBBERMANN
Missouri Gamma

Moreover, I'm more open-minded than ever before, and have discovered that I can always learn something from people as long as I'm willing to accept them for themselves."

"I grew up in Catholic schools and the majority of my friends were all Catholic," reflects Taryn. "... I have met some girls that are Muslim and Jewish and this has opened my eyes a lot. I have never really understood these other religions and possibly never would have, if it hadn't been for the opportunity given to me by Pi Phi."

"In our chapter we had a cultural potluck dinner where everyone had to make a dish from their native country," Janina Navarro says. "We also went around the table sharing our cultural traditions. It makes me even prouder of my heritage – Filipino – when everyone else is equally proud of theirs."

"The mosaic nature of our chapter was not created synthetically; it is a natural progression," Sarah Bang says.

NOT COOKIE CUTTER

Another chapter which is noted for having an inclusive membership is Virginia Theta at Washington & Lee University.

"I pledged Pi Beta Phi knowing it was the most diverse sorority on campus," Virginia Theta President Susan Somers says. "Pi Phi is known for bringing together women from many different backgrounds, and it showed as I met Pi Phis on campus who were involved in all kinds of cultural and academic activities. Pi Phis didn't just look on the outside of a woman and rule her out as a potential new member because of some antiquated stereotype. They made an effort to get to know every potential new member in a serious way, looking at her heart.

"Women know that when we say 'we aren't cookie-cutter' during recruitment, we're the chapter that really means it."

Susan adds "I think you are better



Several alumnae chapters are making a concerted effort to appeal to women of all ages and are seeing wonderful benefits.

"The connection between the younger and older is inspirational," says Alabama Gamma Mary Beth Morris Lloyd, President of the Birmingham, Alabama Alumnae Club, which is pictured above. "The young women see that Pi Phi is truly for a lifetime. They are amazed with the accomplishments of women who have had careers and/or families. The older women see their precious 'daughters' and 'granddaughters.' They reflect on their younger days. They offer advice about careers, child-rearing and finances, while getting advice about computers and digital electronics."

Illinois Epsilon Brenda McClure Mallett, Co-president of the Seattle Washington Alumnae Club, says the ages of their board members span from 20-somethings on up to the 80s. "We've even offered an 'emeritus' position for a few older members who are now in their 80s, inviting them to our board meetings without expecting them to fulfill official responsibilities as an officer. Keeping our senior members involved has been a real plus."

Wyoming Alpha Susan Carlson Penner, President of the Denver, Colorado Alumnae Club, says "During the recent RLR [Regional Leadership Retreats] we did a brainstorming exercise based on recognizing the distinct interests and characteristics of various age groups and came up with programming ideas that would appeal to various segments of our member populations. We believe that the ongoing vitality of our club depends on the strength of our leadership and maintaining continuity from year to year." They achieve this by alternating the ages of the vice president. For example, Susan was initiated in the early '70s and Vice President Iowa Beta Melissa Morrison Farver pledged in the '90s. When Melissa is president, her Vice President will be Colorado Gamma Linda Lees Crosby, a '60s initiate.

Nebraska Beta Susan Thurmond McMannama, President of the Omaha Nebraska Alumnae Club, says "You can bet that a huge percentage of women who sit on major non-profit boards and who run huge charity events, are Pi Phis. These women, over the 90-plus years of our club's existence, have nurtured their younger club members by pulling them into their committees. We have all worked together over the years for Pi Phi, and the city of Omaha, and have taught each other how to be leaders. But, the best results of all are the mutual respect and friendship the young have for the old and the old have for the young."



Katie Compton, Mariko Ishikawa and Stephanie Dodson are Virginia Thetas.

able to empathize with different ethnic backgrounds and life experiences when you share the bonds of sisterhood with someone. People tend to think that they would be most comfortable with someone from a background similar to their own, but that's really not true at all."

"There are many different backgrounds represented in our chapter, and I know I have grown as a person being exposed to so many different opinions and ideas."

— Barrett Nixon, Virginia Theta

NC STATE EXTENSION

A chapter that has the potential to follow the examples of Ontario Alpha and Virginia Theta is our newest chapter at North Carolina State University — North Carolina Delta.

"One of the reasons we were attracted to NC State, is because of the diversity among its women," says Luellen Clymo Smith, Director of Collegiate Extension and Recruitment. "During our colonizing recruitment, we hope to attract women of many cultural and ethnic backgrounds. Our international recruitment team and assisting chapter will emphasize the many talents and interests of our Fraternity members.

"We would like to attract women who seek an association of philanthropic service to others, lifelong sisterhood, friendship, personal development and scholarship as an enhancement to their college experience," Luellen adds. "Pi Phi encourages its members to participate in a wide variety of campus activi-

ties to make new friends and encourage diversity amongst its membership. We look forward to a very diverse charter class at NC State."

Virginia Eta Lori Poveromo Haight, who is the Alumnae Advisory Committee Chairman for

North Carolina Delta, agrees. As a collegian, she experienced a diverse chapter firsthand at the University of Richmond.

"I spent the fall semester of my junior year in London, England, with six other students from the University of Richmond," Lori says. "Four of us were Pi Phis. Our joining Pi Phi seemed to be our only shared characteristic. We had grown up in Louisiana, Virginia, Maryland, and Massachusetts as only, oldest and youngest siblings. We were studying business, education, and English. We represented four different religions, seven different ethnicities, and five different career paths. We were involved in very different areas of the university. In fact, we had only gotten to know each other through our sisterhood events in our chapter. We were sure our paths would not have crossed

if we had not all joined Pi Beta Phi. Our commonality was our sisterhood, and all four of us were enjoying



Virginia Thetas, from left, Catherine Satterfield, Erin Julius, Susan Somers, Christine Sprow and Latoya Sherron attend a "family" dinner.

our Greek-life experience.

"I can clearly recall conversations where one or more of us had to defend the idea that a sisterhood was not a vacuum of difference, or only memorizing each other's hometown and major, but a welcoming acceptance where our differences added to the strength of our chapter."

COMMON VALUES

Barrett Nixon joined Virginia Theta because it was the best fit. "I knew there were many unique and amazing women, more so than any other house, and because of this diversity, I knew I would be accepted for who I was as a person," she says. "My differences and opinions would be valued and respected here more than any other house on campus, and that meant a lot to me.

"The values of our Fraternity are those I have been taught all my life and so, joining this chapter was like coming home. Pi Phi embodies all of what I believe is good and important in my life, and because of this I know I made the right decision in pledging Pi Phi.

"There are many different backgrounds represented in our chapter, and I know I have grown as a person being exposed to so many different opinions and ideas," Barrett adds.

In the words of Ontario Alpha Jamie Au, "Being a member of a diverse chapter has made my already amazing Pi Phi experience even more satisfying and rewarding. For those of you who have not had the experience of belonging to an extremely diverse chapter, we invite you to come visit us. The diversity in our chapter is one of its best attributes; I wouldn't trade it for anything."

TEST YOUR KNOWLEDGE OF PEOPLES, CUSTOMS, BELIEFS ...

1. According to the 2000 U.S. Census, what percentage of U.S. residents, age 5 years or older, speak a language other than English in the home?
a.) 3 percent b.) 7 percent c.) 10 percent d.) 20 percent
2. Name the wind instrument played by aboriginal peoples of Australia:
a.) hurdy gurdy b.) didgeridu c.) bongo d.) charango
3. Who did *Sports Illustrated for Women* name Athlete of the 20th Century?
a.) Jackie Joyner-Kersey b.) Babe Didrickson Zaharias c.) Nancy Lopez
d.) Martina Navratilova
4. In India, the caste system exists among:
a.) Hindus b.) Muslims c.) Christians d.) all of the above
5. Direct eye contact with strangers might be avoided by people who are
a.) from India b.) Vietnamese c.) Native American d.) all of the above
6. "I Know Why the Caged Bird Sings" is an autobiography of:
a.) Maya Angelou b.) Chita Rivera c.) Col. Harland Sanders d.) Robert Stroud
7. What is celebrated by Christians prior to the beginning of Lent?
a.) Fastnacht b.) Carnaval c.) Mardi Gras d.) all of the above
8. A person of Mexican heritage living in the United States prefers to be identified as:
a.) Chicano b.) Latino c.) Hispanic d.) varies by individual, ask
9. What disability or disease do Nelson Rockefeller and Cher have in common?
a.) cerebral palsy b.) diabetes c.) dyslexia d.) neurofibromatosis
10. What food cannot be eaten by a person who observes Kashrut — Jewish dietary law?
a.) pork chop b.) McDonald's Big Mac c.) monkfish d.) all of the above
11. Boxing Day, the British holiday celebrated Dec. 26, originally began as a day when:
a.) gifts were bestowed to servants b.) a pugilistic event was held c.) unwanted gifts were returned to stores d.) gift boxes were taken to the trash bin
12. According to the CIA's World Factbook, the estimated life expectancy of a female born in 2003 in the United States is 80 years. A baby girl born in Botswana has a life expectancy of:
a.) 32 years b.) 43 years c.) 51 years d.) 62 years

Answer Key: 1. d; 2. b; 3. a; 4. d; 5. d; 6. a; 7. d; 8. d; 9. c; 10. d; 11. a; 12. a

Foundation

SCHOLARSHIPS & FELLOWSHIP RECIPIENTS SELECTED

The Pi Beta Phi Foundation Trustees are proud to announce that 70 Pi Phis will receive awards for the 2004–05 academic year. These women display outstanding academic achievement and excellent service to Pi Beta Phi, their campus and their community.

More than \$80,000 in scholarships and fellowships will be awarded during the 2004–05 academic year. Thanks to the support of many members and friends of Pi Beta Phi, the Foundation will award the following:

- 28 Friendship Fund Undergraduate Scholarships and Graduate Fellowships
- 9 Holiday Undergraduate Scholarships
- 29 Named and endowed undergraduate scholarships and Graduate Fellowships
- 4 Alumnae Continuing Education Scholarships

Educational financial assistance is available to qualified collegians and alumnae. The Foundation strongly encourages members to apply. Applications for the 2005–06 academic year will be available online in July. The application deadline is January 31, 2005.

For additional information on the scholarship program or about endowing a scholarship, please contact the Foundation office or visit www.pibetaphifoundation.org



Kristen Lazzaretto

SIGN OF THE ARROW MELISSA SCHOLARSHIP

Illinois Zeta Kristen Lazzaretto is the 2004–05 Sign of the Arrow Melissa Scholarship recipient. Kristen is an English major at the University of Illinois. She is actively involved in many campus and community service programs.

Kristen's commitment to Pi Phi, her community and her campus represents the purpose of this community service scholarship created by the St. Louis Alumnae Club's Sign of the Arrow shop. The award honors the memory of Missouri Beta Melissa Gail Aptman who was killed prior to her graduation in 1995.

Kristen is the fourth recipient of the Sign of the Arrow Melissa Scholarship. Past recipients include Iowa Gamma Kelly Koeppel, Wisconsin Delta Alisa Heitz and Missouri Beta Katherine MacArthur. As the most recent recipient, Katherine expresses her gratitude for this generous scholarship.

"With the huge burden of tuition payments greatly diminished, I didn't have to work as much this year and

was able to concentrate more on my academics and service to the community. You have invested in my future and I promise that I will spend my life working to make the Foundation and the greater Fraternity proud," Katherine says.

SPECIAL THANKS

The Foundation extends a special thank you to the following selection committee volunteers:

ALUMNAE CONTINUING EDUCATION SCHOLARSHIP

Marie Gruetzemacher Whitacre, Missouri Alpha
Mary Ann Fisher Olinger, Indiana Zeta
Georgia Khym Heath, Texas Beta

GRADUATE FELLOWSHIP

Sheila Consaul, Illinois Theta
Heidi Dake Keogh, Colorado Alpha
Margy Liebers Lovelette, Pennsylvania Eta

UNDERGRADUATE SCHOLARSHIP

Robin McPherson Rohrback, Florida Beta
Sue Melberg Davis, Indiana Epsilon
Doreen Mueller, Georgia Alpha

SIGN OF THE ARROW MELISSA SCHOLARSHIP

Beth van Maanen Beatty, Texas Gamma
Libby Burns Donnell, Ohio Zeta
Mary Rogers Gordon, Missouri Alpha

FRIENDSHIP FUND SCHOLARSHIP RECIPIENTS



Stephanie Bruno
Texas Gamma
Texas Tech University
Marketing & Mgmt.



Jennifer Burns
Texas Gamma
Texas Tech University
Human Development
and Family Studies



Dana Cobb
Virginia Delta
Old Dominion Univ.
Marine Biology



**Carrie
Coykendall**
Michigan Alpha
Hillsdale College
Biology



Sarah Dreier
Illinois Epsilon
Northwestern Univ.
Legal Studies &
Philosophy



Zita Dube
Alberta Alpha
University of Alberta
Sciences Socio-Poli-
tique



Ashley Durec
Alberta Alpha
University of Alberta
Russian Language
and Literature



Amanda Elbert
North Dakota Alpha
University of North
Dakota
Biology



**Alanna
Fitzgerald-
Husek**
Ontario Alpha
University of Toronto
Psychology



**Brittany
Francescon**
Tennessee Gamma
Univ. of Tennessee
Geography/Elementary
Education



**Hayley
Houghton**
Alabama Gamma
Auburn University
Pre-Physical Therapy



**Sarah
Kleinfelder**
Ohio Iota
University of Dayton
Biology



Kyla Madsen
South Dakota Alpha
University of South
Dakota
Sociology



Katie McNeill
Texas Alpha
University of Texas
Marketing and
Spanish



**Stephanie
Mellor**
Iowa Zeta
University of Iowa
Nursing



Cassie Mergy
Florida Beta
Florida State Univ.
Nursing



**MacKenzie
Mertz**
South Dakota Alpha
Univ. of South
Dakota
Psychology



**Jennifer
Obrecht**
Indiana Theta
Valparasio University
Criminology



Eva Pierce
Michigan Alpha
Hillsdale College
Speech and History



**Elizabeth
Scanlan**
Mississippi Alpha
University of South-
ern Mississippi
Software Engineer-
ing Technology



Pauline Sein
Oklahoma Alpha
Univ. of Oklahoma
Zoology/Biomedical
Science/Pre-med



Laura Spencer
Illinois Epsilon
Northwestern Univ.
Chemical Engineer-
ing



Colleen Strauch
Arizona Alpha
University of Arizona
Journalism



Crystal Y'Barbo
Texas Eta
Texas A & M Univ.
Accounting and
Finance

FOUNDATION

SCHOLARSHIP RECIPIENTS



Holiday Scholarship
Michelle Adrian
South Dakota Alpha
University of South
Dakota
Advertising



Holiday Scholarship
Colleen Carr
Illinois Zeta
University of Illinois
Marketing



Holiday Scholarship
Treana Graham
Washington Gamma
University of Puget
Sound
Politics & Govern-
ment



Holiday Scholarship
Sarah Kudelko
Florida Delta
University of Florida
Theater and Crimi-
nology



Holiday Scholarship
Bridget Merrill
Iowa Zeta
University of Iowa
Actuary Science



Holiday Scholarship
Tamara Moyer
Nebraska Gamma
Creighton University
Biology and Spanish



Holiday Scholarship
Kasee Sparks
Virginia Theta
Washington & Lee
University
Religion and Politics



Holiday Scholarship
Carrie Ye
Alberta Alpha
University of Alberta
Honors Physiology



Adele Collins Mason
Scholarship
Rachel Hilliard
California Delta
University of Califor-
nia, Los Angeles
English



Arizona Alpha Schol-
arship
Kara Gales
Arizona Alpha
University of Arizona
Political Science



Betty Blades Lofton
Scholarship
Lindsay Martin
Indiana Gamma
Butler University
Journalism



Dallas Alumnae
Club/Ann Dudgeon
Phy Scholarship
Sarah Kahn
Texas Zeta
Baylor University
Fashion Merchan-
dising



Frances H. Hofacre
Scholarship
Susan Elling
Minnesota Alpha
University of Min-
nesota
Marketing & Chinese



Frances H. Hofacre
Scholarship
Anna Haag
Minnesota Alpha
University of Min-
nesota
Finance and Entre-
preneurial Studies



Hannah Mervine
Miles / PA Beta
House Corporation
Scholarship
Nicole Hollister
Pennsylvania Beta
Bucknell University
Business Mgmt.



Harriet Rutherford
Johnstone Scholar.
Terra Firth
Mississippi Alpha
University of South-
ern Mississippi
Speech Language
and Pathology



Jane Porter
Warmack Scholarship
Sara Kloppenburg
Texas Eta
Texas A & M Univ.
Finance



Jo Ann Minor Roder-
ick Scholarship
Jennifer Johnson
Oklahoma Beta
Oklahoma State
University
Pre-Med/Political
Science



Johanna Zournas
Scholarship
Rebecca Bartlett
Texas Gamma
Texas Tech University
Nursing



Joyce Wherritt
Bowers Scholarship
Jenna Losh
Illinois Zeta
University of Illinois
Chemistry



Kansas Alpha
Scholarship
Natalie Adams
Kansas Alpha
Kansas University
Journalism



Kansas Alpha
Scholarship
**Stephanie
Adams**
Kansas Alpha
Kansas University
Advertising



Kansas Alpha
Scholarship
Cara Milligan
Kansas Alpha
Kansas University
Broadcast Journalism



Louisiana Alpha
Triple M Scholarship
Jaime Gele
Louisiana Beta
Louisiana State
University
Landscape Archi-
tecture

FOUNDATION



Marcia Hart Foster,
D.C. Alpha Scholar.
Jennifer Kratochvil
Nebraska Gamma
Creighton University
Finance



New York Zeta
Scholarship
Megan Mukai
Pennsylvania Theta
Villanova University
Nursing



Oklahoma Alpha
Scholarship
Tara Hagan
Oklahoma Alpha
University of Okla-
homa
Accounting



Oklahoma Alpha
Scholarship
Kristen Weidner
Oklahoma Alpha
Univ. of Oklahoma
Zoology/Biomedical
Science/Pre-med



Ruth Barrett Smith
Scholarship
Brittany Lafuse
Ohio Beta
Ohio State University
Psychology



Ruth Trinkle Read
Memorial Scholar.
Melissa Conrad
Kansas Beta
Kansas State Univ.
Accounting



Sarah Ruth Mullis
Scholarship
Sara Tebbe
Indiana Delta
Purdue University
Pharmacy



Corinne Hammond
Gray Fellowship
Kara Peterson
Iowa Gamma
Iowa State University
Juris Doctorate (Law)



Joanie Arnold Gradu-
ate Fellowship
**Rebecca Schwartz
Knutson**
Minnesota Alpha
Univ. of Minnesota
MBA



Past Grand
Presidents Memorial
Graduate Fellowship
Jill Deacon
Colorado Gamma
Colorado State
University
Doctor of Medicine



Friendship Fund Fel-
lowship
Cristi Bullard
Oklahoma Alpha
University of Okla-
homa
Juris Doctorate (Law)



Friendship Fund Fel-
lowship
Lauren Russell
Ohio Epsilon
University of Toledo
Juris Doctorate (Law)



Adele Collins Mason
Alumnae Continuing
Education Scholar.
Lindsey Mercer
California Beta
University of Califor-
nia, Berkeley
Juris Doctorate (Law)



Alumnae Continuing
Education Scholar.
Andrea Hefty
Iowa Gamma
Iowa State University
MBA



Alumnae Continuing
Education Scholar.
**Kathleen Tafel
Pille**
Michigan Gamma
Michigan State
University
Elementary Educa.



Alumnae Continuing
Education Scholar.
Emily Strassner
Louisiana Alpha
Tulane University -
Newcomb College
Ph.D. School Psy-
chology

Not Pictured:

Friendship Fund
Scholarship
Brieanne Koster
Michigan Epsilon
Western Michigan
University
Occupational Therapy

Friendship Fund
Scholarship
Ashley Tremain
Wisconsin Delta
Marquette University
Psychology and Crimi-
nology

Holiday Scholarship
Jayne Lawson
Missouri Beta
Washington Univ.
History

Carol Inge Warren
Scholarship
Andrea Simon
North Dakota Alpha
University of North
Dakota
English and Second-
ary Education

Frances Hall Comly
Scholarship
Katherine Cance
Wisconsin Delta
Marquette University
Finance and Economics

Arrowmont

by Kimberly Geib

PI PHI & ARROWMONT VISIT CHANGED HER LIFE

Being a Pi Phi and getting a chance opportunity to attend Arrowmont changed Illinois Zeta Cathy Swengel Hunt's life.

She grew up in a small Illinois town and didn't have much of an early art education. But, she admits that her mother says she was always "making things."

After graduating from high school Cathy attended the University of

hand in the air and said, 'I think I'd like to go.'"

She soon realized that all of the Arrowmont students were either artists or art students so she decided to simply say that she was a student at the University of Illinois and hope that nobody would ever figure out how inexperienced she was.

She took a course in silkscreening on fabric. There she learned how to screen a motif repeatedly on a 9-foot long piece of fabric to create a single image. "As we completed these works we hung them over the studio's catwalk railing to fully dry. One day, Tennessee Gamma Marian

Heard, the Director of Arrowmont, came through the studio with a group of people that I later learned were the acquisitions committee.

"Ms. Heard came to me and told me that the committee wanted to purchase one of my pieces for the permanent collection. And, then she started talking about how I might need it for my 'one-person show' or for graduate school applications."

Realizing that she was caught, Cathy confessed that she was not an artist.

"To my amazement she said that they didn't care and still wanted the piece. Because I was a Pi Phi and there on scholarship, I decided to just donate the piece to Arrowmont."

Before leaving Arrowmont, Cathy was asked to speak with Ms. Heard in her office. "She told me that she thought I had a lot of talent and a good eye. She said she couldn't advise that I change my major since

I was so close to graduation, but she encouraged me to pursue my interests in art."

This was the nudge she needed.

Cathy graduated from college, married and worked at the Illinois State Geological Survey until late 1979. But, in the evenings, she took art classes in drawing and design and also explored fiber arts.

"After moving to Houston, I gave up my career in geology," Cathy says. "I attended a class at Arrowmont in the summer of 1980 on a scholarship from the Houston Alumnae Club and went to the Glassell School of Art to take classes in all areas of art.

"In the mid-'80s the Glassell School asked me to teach a class in papermaking. I wasn't sure I would like teaching but agreed to give it a try. I loved it." She enrolled in a graduate program in art at the University of Houston where she received an MFA in Printmaking in 1990. "I continued to teach printmaking at the University of Houston and took on the job of graduate adviser. Today, as Clinical Assistant Professor of Art at the University of Houston, I manage the printmaking facilities and program and continue to be the graduate adviser."

In the fall of 2000, Cathy learned that her name had been proposed for membership on the Arrowmont Board of Governors and in the Spring of 2001, Indiana Delta Lois Huston Ross called to inform her that she had been elected. "I was thrilled and proud to accept. It had been exactly 30 years since I had accepted a scholarship to attend Arrowmont and inadvertently began my journey into my life as an artist and educator."

Today, Cathy Hunt serves as Arrowmont's Chairman of the Board of Governors.



Cathy Hunt is Arrowmont's Chairman of the Board of Governors.

Illinois, where she pledged Pi Phi. One of the Champaign-Urbana Alumnae Club members, Illinois Zeta Beth Olwin Dawson, served on the Arrowmont Board of Governors. The club decided to offer a scholarship so a collegian in the chapter at Illinois could learn firsthand about the Arrowmont experience. "For one reason or another, not one of our art majors could go that summer," Cathy says. "So I, with all the art expertise of a geology major, put my

LA JOLLA ALUMNA MEMORIALIZES HUSBAND

The ceramics studio courtyard legacy project, led by Artist-in-Residence Jake Antonelli, evolved from a simple, thoughtful bench commission. Arrowmont Board Member Massachusetts Alpha Phyllis Fazzari Speer, of San Diego, California, commissioned Antonelli, a woodturner and furniture designer, to create a bench in memory of her late husband, Dick Speer, to be placed in the area outside the ceramics studio.

Although a comfortable bench in the space was a welcome addition, many agreed that the space was in need of some long deserved attention.

As the cypress and cedar bench began to take shape, Ian Shanklin, Landscape Architect for the National Park Service and friend of Antonelli's, also took interest in the project. With his expertise and through discussions with Jake, the two came up with ideas to transform the space from a mundane flagstone patch into an inviting courtyard with shade, native plantings, soft lighting and even a water feature.

"The best part of the project was the conception of it — working with Ian to come up with a plan," Antonelli said. Shanklin went to work creating a landscape architect's rendering of their ideas that met the administration's resounding approval. Funds for the project were allocated from the money raised through the Gatlinburg Gateway Foundation's Annual Holiday Gala.

Antonelli, Shanklin, other resident artists, spring work-study and studio assistants, along with staff members, volunteered countless hours and hard labor to complete the project.

"The decision to establish a native plant garden for the courtyard was pursued for several reasons," Shanklin said, who is concerned



Cedar bench by Artist-in-Resident Jake Antonelli will be placed in the courtyard.

with the effects exotic and non-native species impose on the balance of our bio-diverse region. He said "native plants made sense for their beauty, easy maintenance, adaptability, as well as their benefits over non-native species that can become invasive and aggressive to native plant communities.

"Our palette of very special and appropriate plants in this region is incredible and native plants foster, promote and restore our natural heritage," he continued. Trees such

as redbud, dogwood, ironwood, and the American holly along with ground cover such as ferns, bleeding heart, and other regional species were used.

Antonelli is creating two more benches that are available for possible naming opportunities. This is one project that he will never forget. "It has been a highly educational process and a welcome departure from my studio work. Being at Arrowmont as a resident artist provides an open environment and schedule that has made the project feasible," Antonelli said.

It was a combination of talents and back-breaking labor of all who helped transform this once uninspiring space, which makes it truly unique and beautiful. All involved can be proud that they helped create a comfortable place of tranquility and peaceful contemplation, as well as a welcome spot for lively conversation and inspiration for all who come to Arrowmont. The courtyard was dedicated during the Board of Governors' Spring meeting in May.



From left: Ian Shaklin, Cherine Bishara, Max Posey and Jake Antonelli plant a tree in the new courtyard.

Alumnae News

The Dallas, Texas Alumnae Club recently held its annual Pi Phi Tasting Party at the home of Texas Beta Lucile Doran McCormick. Pictured are Texas Alphas Suzanne Hebert Everbach, Lisa Bonnet Woodley, Cile, and Janet Wallace Yancy.



Members of the Indian River County, Florida Alumnae Club participated in a Monmouth Duo with Kappas in the Vero Beach, Florida area. Fifty-four women met at The Moorings Club for a luncheon and program about the founding of each organization and Monmouth College.

Austin, Texas Alumnae Club members and their children enjoyed the club's annual fund-raiser, "A Celebration of Literacy" brunch at Austin Country Club. Funds raised during the event support the libraries at a local women's shelter and a local hospital.

The Spokane, Washington Alumnae Club held a Halloween party for alumnae and their chil-

dren and grandchildren. The group of 21 alumnae and 23 children trick-or-treated at five alumnae's homes and then enjoyed refreshments. As part of an ongoing book drive, everyone brought a book to donate to literacy programs in Spokane. This year the club has collected 300 books.

"Hark! The Pi Phi angels sing, Time for holiday Ring, Ching, Ching" was this year's holiday luncheon theme for the Dayton, Ohio Alumnae Club. Pi Phi alumnae, their mothers and daughters, as well as Ohio Iota collegians, enjoyed a social hour and luncheon at the Dayton Country Club.

The Association of Fund-raising Professionals, named Ohio Delta

Betsy Baldwin Whitney and her husband Leon outstanding philanthropists of the year. The Whitneys were honored at a lunch attended by 350 community and business leaders in Dayton, Ohio. Betsy and Leon have been contributors to the YWCA for more than 40 years.

One of the Northern Virginia Alumnae Club's many activities this year included a Chapter Spirit Fest/Officer Installation where members wore Pi Phi or their university sweatshirts to a club meeting. The best represented chapter won a prize. They were also encouraged to donate 10 cents for each year since they were initiated and the donation was given to a nearby chapter.

Connecticut Alpha Harriet Morgan Wilbur was named commissioner of the year by the Connecticut Association of Conservation and Inland Wetlands Commissions. Harriet is Shelton, Connecticut's Conservation Commission co-chairman, and was recently featured in "The Connecticut Post" for her honor. She said in the article that her biggest interest is open space preservation.

The Santa Fe, New Mexico Alumnae Club held its annual children's book collection and holiday party at the home of Louisiana Beta Bette Thompson Davis. For the event, 35 alumnae members gathered more than 50 books for the children in St. Vincent Hospital.

Alberta Alphas Tracy Lyn Smith Moland and Terri Wynn Pepin celebrated their birthdays in New York together where they were guests on "Living it Up with Ali and Jack." The show aired April 16 on CBS.



The NW Harris County Panhellenic Association of Houston, Texas named Arkansas Alpha Madalyn Marchman Jones the Greek Woman of the Year. She is a past president of both the Cypress Creek-NW Houston, Alumnae Club and the local panhellenic organization. Madalyn is also a former Pi Phi Alumnae Province President and is currently a Collegiate Province President.



Arlington Heights, Illinois Alumnae Club members increased third graders' reading through the CAR program in a multicultural classroom in Des Plaines, Illinois. The children "raced" paper cars around a track — the more they read the faster they went. Parents, the mayor of Des Plaines and the school principal were asked to attend the awards ceremony where the children received medals and books for their efforts.



Alabama Gamma Cristin Gunnells, Alabama Beta Kacey Roberson Nach and Alabama Gamma Margaret Buford Mann traveled to Mexico on a missions trip where they helped more than 500 people.



The Tucson, Arizona Alumnae Club enjoyed its annual Holiday Brunch. Klaire Kaufman Pirtle and Gail Price Grossetta, friends since eighth grade and Arizona Alpha pledge sisters, hosted the celebration.



Lynn Hinkle, second from left, and Linda Strine, right, were recently initiated into Colorado Alpha as alumnae initiates. Lynn is Ohio Eta Stephanie Hinkle's mother. Stephanie, left, was a Resident Graduate Consultant (RGC) from 2002–2003 and is currently an Alumnae Advisory Committee member. Linda is the sister of South Carolina Beta Nancy Strine, second from right, who served as an RGC from 1979–1980 and is currently a Collegiate Province President. The four women are with Grand Vice President of Collegians Linda Noel Ibsen, Colorado Beta, center.

ALUMNAE NEWS

The Pi Beta Phi Children's Library at Yale New Haven Children's Hospital has been relocated to the heart of the new pediatric unit. The library is now easily accessible to 50-plus pediatric beds. Twenty Pi Phis representing the New Haven and Southern Fairfield County, Connecticut Alumnae Clubs and the Connecticut Beta Chapter met to celebrate the library's reopening.



Four Las Vegas, Nevada Alumnae Club members, Arizona Alpha Melinda McGeorge Johnson, Oklahoma Beta Jane Fitzpatrick Boudreau, Arizona Alpha Kristina Konrath Swallow and Georgia Alpha Nancy Logan Gasho, also are members of the Las Vegas Junior League. Melinda and Nancy are past presidents of the league and Kristina is the current president. All four women have served as past presidents of the Las Vegas alumnae club.

Captain Patricia Cika was recently featured in The Ohio State University student newspaper for service in the 82nd Airborne Division. Patricia, who is an Ohio Beta, interprets the "Law of Armed Conflict" regarding rules of

engagement for troops in combat and teaches criminal procedure to the Iraqi police force. After Patricia received her undergraduate degree, she attended law school at night in Washington, D.C. while working for the FBI. Patricia is not alone in her military service — her fiancé is a captain in the 82nd Airborne.

The St. Louis, Missouri Alumnae Club held its fourth annual literacy benefit in February. Texas Delta Peggy Timmons Bergmann and her husband David hosted a cocktail buffet in their home. Proceeds from the event support school libraries in the city.

The Naples, Florida Alumnae Club honored Iowa Alpha Helen Holland Maedje, a 75-year

member, at it Founders' Day meeting. Helen has been active in the Naples club since 1971.

A group of friends getting together to watch the Superbowl turned into an impromptu Pi Phi gathering since, coincidentally, all the female guests turned out to be Pi Phis. Mississippi Betas Julie Westbrook and Carrie Westbrook, Oklahoma Beta Katie Humphries, Louisiana Beta Liz Beatty, Ohio Alpha Pamela Pierce, Oklahoma Alphas Margaret Harder and Megan McFarland, and Texas Alpha Susan Vice enjoyed their unexpected time together.

The Cypress Creek – Northwest Houston, Texas Alumnae Club recently enjoyed a successful fund-and "fun-" raising evening. Each Pi Phi brought a beverage, hors d'oeuvre, spouse or friend, and a new, silent-auction item. Through the event, club members raised more than \$1,000 for several different philanthropic projects.

The Sandhills, North Carolina Carnation Circle recently celebrated its 25th anniversary. The



Arizona Alpha Alyssa Wick was recently named Rookie of the Year at Russ Lyon Realty in Scottsdale, Arizona. She also received the President Award for high volume sales. Alyssa graduated cum laude from the University of Arizona.

event was held in conjunction with a regular meeting and Founders' Day program at Hollycrest House, the home of Tennessee Alpha Ann Parks McAllister and her husband, Russell. The club has a long history of excellence.

Washington Gamma Julie Jacobson and her husband Gene Gates won the two biggest honors at the Atlanta Achievement in Radio Awards. The married morning duo took home the Best Morning Show and Best New Talent in the Market trophies. Julie has served the Fraternity as a Traveling Graduate Consultant, an Alumnae Advisory Committee member, an Alumnae Club President and a Collegiate Province President. Currently, she is a Pi Beta Phi Regional Risk Management Officer.

The Cincinnati, Ohio Alumnae Club and Ohio Zeta Chapter joined forces to implement the Champions Are Readers (CAR) program in four third-grade classrooms at a local elementary school. Volunteers went to the school each day to either read to the classes or to serve as listeners for the children who were not getting their reading time in at home. The group also donated \$400 worth of books to the school.

The Katy-West Houston, Texas Alumnae Club unveiled the sign for the new Family Reading Corner at Fairbanks Hospital. The Family Reading Corner began through a book drive held by the club. The hospital staff was so pleased with the idea that many of them donated additional books and toys, a new bookcase, and a table and chairs for the corner.



The Brazos Valley, Texas Alumnae Club hosted its sixth annual Beaux and Arrows Champagne Dessert party in February. Money raised from the event was given to a local family literacy program.



Kim Schaur Spear and Patty Hammond Reilly became friends at church in Portland, Oregon. It wasn't until they were paired in a mentoring program that they discovered they are both Oregon Betas.



Massachussetts Alpha Virginia Raycroft Wilson pledged at the age of 15, and is still active in the Sarasota-Manatee, Florida Alumnae Club 81 years later. To celebrate, Michigan Gamma Jane Woolner Stanley presented an angel to Virginia.



The Birmingham, Alabama Alumnae Club's Carnation Interest Group is made up of members who have been keeping in touch since their college days at Birmingham-Southern College. Currently, the group meets twice a month for lunch.

ALUMNAE NEWS

Oklahoma Alphas Blis Powell Freeman and E. Mallory Wightman Rogers had a booth of their designs, which include jewelry, at the Trinity District Antiques.



The Sacramento, California Advertising Club recently named California Mu Rochelle Barcellona Davis as Advertising Person of the Year. The Sacramento Public Relations Association also honored her with a Lifetime Achievement Award. These are two of Sacramento's most coveted advertising and public relations awards. Rochelle is the president and founder of Barcellona Inc., a full service integrated marketing communications firm that offers advertising, graphic design and public relations services in Folsom, California.

Knoxville, Tennessee Alumnae Club members were recognized in March for their continued support of the Center for Children's and Young Adult Literature at the University of Tennessee Library. The center often invites children's literature authors, such as E.B.

Lewis, and illustrators to speak with the community and education students at the university.

For 17 years, members of the Richmond, Virginia Alumnae Club have enjoyed a "Wild Women's Weekend" where they take time to get out of town and have fun. This year, the trip included traveling by train to Alexandria, Virginia where the members stayed and visited the Smithsonian Museums. At the American History Museum, in the First Lady exhibit, the women found a life-size photo of former First Lady and Vermont Beta Grace Goodhue Coolidge wearing her Pi Phi badge.

The Portland, Oregon Alumnae Club held a holiday luncheon and honored Oregon Beta Gail Burnett Martindale as the club's 2003 Angel Award Winner.

Texas Zeta Sunni Feather Brookshire hosted the annual Pi Phi Christmas Tea in Tyler, Texas. The tea is for area alumnae and chapter members and their mothers. More than 70 women attended this year.

Colorado Delta Roxann Mackenzie Hayes, P.E., has been elected as president of the Colorado Section of the American Society of Civil Engineers (ASCE). Founded in 1852, ASCE represents more than 133,000 members of the civil engineering profession worldwide, and is America's oldest national engineering society. More than 3,000 civil engineers are members of the Colorado section of ASCE. Roxann is a senior civil engineer for Larimer County, Colorado, specializing in transportation engineering and project management.

Evansville, Indiana Alumnae Club members participated in their annual holiday celebration. Members enjoyed an evening of food, visiting and a Fraternity Heritage trivia game.



Oklahoma Beta Angi Dover Phillips was named Mrs. Oklahoma 2004. Angi never entered pageants when she was single, but is now headed to compete in the Mrs. USA pageant in August.

Reno-Sparks Association of Realtors named Nevada Alpha Penny White Mayer Realtor of the Year. This prestigious award is given to the realtor who has best served the realtor organization and the community. Penny served as president of the Reno-Sparks Association of Realtors, as chairman of the Nevada Association of Realtors Legislative Committee, and on the board of directors for the Nevada Association of Realtors, an organization of more than 13,000 members. Penny has served the Fraternity as president of the Reno, Nevada Alumnae Club, as House Corporation Chairman and Alumnae Advisory Chairman for Nevada Alpha, and as Alumnae Province President for the Alpha-Delta province.

The Wichita and Hutchinson, Kansas Alumnae Clubs met at The Spartan restaurant in Newton, Kansas for a luncheon. "Make New Friends, But Keep the Old," was the theme of the event. Thirty women gathered to enjoy food, conversation, games and a sing-a-long.

PI PHI PENS

After three marathons, five triathlons and 10 years of ignoring her symptoms, 35-year-old California Delta Kristine Stiven Breese, a mother of two, suffered heart failure and received a pacemaker in 1999. From her experience, Kristine wrote, "Cereal for Dinner: Strategies, Shortcuts & Sanity for Moms Battling Illness." In the book, Kristine offers practical advice and support to moms who are sick and juggling motherhood's many demands with their own need to rest, to recover and to get to the doctor on time.



Theater tour chairman Arizona Alpha Cynthia England Hicks, Alumnae Club President Missouri Gamma Judi Rogers Knight and Kansas Beta Barbara Kellogg Elliott (above) planned the 47th Annual Kansas City, Missouri/Shawnee Mission, Kansas Alumnae Club New York Theater Tour. Pi Phi family and friends enjoyed staying at the Waldorf Astoria Hotel, sightseeing, dining and seeing several productions. The club also sponsored its 30th Annual Spring Tour in May with a London theater tour and optional extension stay in the Loire Valley and Paris.



Florida Beta Melissa Herrington has opened her first solo show, "Sleep Stories: with separate spheres" as part of the Atlanta Gallery Association's "ATL art [04]," a citywide arts experience that will include exhibitions at the High Museum of Art, The Atlanta Contemporary Art Center and the Museum of Contemporary Art of Georgia. Melissa is known for her inventively textured acrylic paintings.

The Washington, D.C. Alumnae Club celebrated the 110th anniversary of its founding. Emma Harper Turner, who began the club also started the national alumnae department. At the 1910 Convention, club members proposed that Pi Phi have a national philanthropy. This proposal eventually turned into the Pi Beta Phi Settlement School. Pictured: Club treasurer Illinois Epsilon Nancy Fisher Mitchell and club president Oregon Beta Martha Monroe Henderson.



Reunions & Anniversaries

Members of the 1985 Washington Beta pledge class got together in Seattle to support Kristen Brown Jaquish. Kristen was diagnosed with breast cancer in August and has been going through chemo therapy.



West Virginia Alphas Susan Sarber Emerson, Lynn Hyatt Riddick, Loren Renas Pannell and Ginny Vining Leonard reunited in Morgantown, West Virginia for West Virginia University's homecoming.



Oregon Alphas celebrated their 10th year after graduation in Lincoln City, Oregon. The group enjoyed a Cookie Shine together.



Fourteen 1963 Arizona Alphas congregated during the University of Arizona's homecoming. A few of the activities included a poolside party, themed dinners and a Cookie Shine. Pictured, back: Molly Keil Hynes, Joan Wyant Bobrink, Pam Morris Samuels, Ginny A. Wolfe; front: Margaret Greeley Kurtin and Clare Terry Hamlet.



Six Missouri Alphas from the 1980 pledge class gathered in Columbia, Missouri for a reunion and tailgate party during the University of Missouri's homecoming game. Pictured, back: Allison Felter, Lisa Matlock Roszell, Jackie Smith Woodward, and Maria Redei Tenkhoff; front: Kathy Pepple Bailey and Gina Osborn Muzzy.



A group of Texas Betas from the 1974 pledge class gathered in Colorado for a ski trip. Pictured: Marilyn Moussa Hubble, Suzanne Cross Hearn, Martha Cravens Bonilla, Leslie Landrum Kingsman and Ann Warmack Brookshire.

Diamond Arrows

The following women received certificates in honor of their 75 years of membership in Pi Beta Phi Fraternity:

Gretchen Hobbs Allen
Wisconsin Beta

Helen Hanson Arnold
Idaho Alpha

Audra Snyder Bailey
Indiana Beta

Pauline Baldwin
Missouri Gamma

Lucille Ross Benton
Nebraska Beta

Ione Strickland Blair
Kansas Beta

Marjorie Jones Blood
Idaho Alpha

Evelyn Moorman Brunkow
Wisconsin Beta

Gillian Morrell Burrell
Colorado Alpha

Muriel Lerch Cameron
California Gamma

Edith Shackman Clarke
Virginia Gamma

Jeannette Dickson Colado
Florida Gamma

Elizabeth (Betts) Hawkins Custer
California Alpha

Virginia Romberg Davis
Iowa Gamma

Marian Andrew de la Ossa
Colorado Alpha

Elizabeth Graham Demmon
Colorado Alpha

Veryl Christgau Detwiler
Minnesota Alpha

Louise Copeland Dull
Pennsylvania Delta

Elsa Barker Eskew
Indiana Alpha

Winifred Erickson Fralish
Wisconsin Beta

Anne Kelso Currie Hambricht
North Carolina Alpha

Marjorie Plew Hanck
Illinois Zeta

Vance Sullivan Harmon
New York Alpha

Jane Barmby Henry
California Beta

Virginia Hinchliff
Illinois Beta

Elizabeth Matthews Hubbard
New York Alpha

Eleanor Walkinshaw Hubly
Michigan Beta

Lady Lou Lalance Jenkins
West Virginia Alpha

Margaret Hahn Johnson
California Beta

Sallie Beeler Jones
Oklahoma Beta

Clementine Hall Kastendieck
Florida Gamma

Anna Ridgway Lang
Pennsylvania Alpha

Dorothy Laxson Loring
Illinois Alpha

Dorothy Williams Lombard
Texas Beta

Grace Keiser Mayes
Illinois Zeta

Dorothy Ormsby Millett
Oregon Alpha

Jean Walton Noyes
Pennsylvania Alpha

Eleanor Bowser Pfau
Minnesota Alpha

Betty Kimberly Reams
Nebraska Beta

Katherine Curran Reemsnyder
Ohio Beta

Helen Welch Rehwaldt
Arizona Alpha

Geraldine Conzet Ronveaux
Colorado Beta

Doris Suhrlund Sanford
New York Gamma

Jennie Delzell Savage
Oregon Alpha

Jacquelin Mallory Scott
Missouri Alpha

Marie Siegrist
D.C. Alpha

Anne Hargrove Smiley
Texas Alpha

Margaret Sanders Stallman
Ohio Beta

Marian Morris Stephan
Ohio Alpha

Evelyn McGowin Surgener
California Gamma

Betty Test
Illinois Delta

June Calhoun HesterThompson
Oklahoma Beta

Louise Kelch Vandivier
Indiana Alpha

Dorothy Dutton White
Florida Alpha

Ruth Hopkins Wilhelm
Ohio Alpha

Frances Porter Williams
Florida Gamma

Mary Farley Willis
Iowa Beta

Vivian Downey Winston
Washington Alpha

Eleanor Womer
Kansas Beta

Collegiate News

North Carolina Gammas participate in intramural volleyball, water polo, softball, flag football, soccer, bowling and basketball at Wake Forest University. The women were water polo champions consecutively for two years, and are current champions of soccer, bowling and volleyball.



Several Mississippi Betas play for the University of Mississippi's athletic teams. Micah Pioreck runs for the track team, Claire Conerly plays tennis, and Courtney Aldredge and Allison Johnson are members of the Rebelettes dance team. Recently, the dance team placed 10th out of 50 dance teams during a national competition.

Missouri Gammas were intramural softball champions last year at Drury University. This year, the team came in a close second.

Colorado Alphas raised money for the Make-A-Wish Foundation by participating in a powder puff football game at the University of Colorado.

Arizona Alpha Katie Christy, a second year member of the University of Arizona's golf team, received a chance to tour with the NCAA All-American team in Europe. Other chapter members enjoy getting together with the men of Phi Gamma Delta for themed games of intramural softball. This year, themes have included eighties night, celebrity night and mismatch night.

California Kappas at the University of California, San Diego finished their intramural soccer season with a 3-1 record.

There are Iowa Betas on Simpson College's NCAA Division III volleyball, basketball, softball and track teams. Almost 50 percent of the

college's dance team are chapter members, as well.

Illinois Alphas are involved in basketball, tennis, softball, track, soccer, dance and cheerleading at Monmouth College. Two of the chapter's athletes also hold chapter officer positions. Kristy Hass is chapter president and Amanda Havens is panhellenic delegate.

During the winter, Illinois Iotas are volunteers for the Illinois State University's women's gymnastics team.

Two Indiana Alphas, Stacey Fehr and Meghann Disch, play on Franklin College's women's basketball team, which made it to the NCAA Division III tournament this

year. Other varsity athletes include: Rorie Black, Rebekah Blend and Meghann Disch, soccer; Amber Hicks and Stacey Fehr, golf; Holly Essex, cross country and track; and Erika Hanaway and Abby Legge, softball.

Ontario Alphas at the University of Toronto don Pi Phi gear and turn fitness classes into sisterhood events. The most popular workout class is a high-energy, hip-hop/jazz class where members learn complex routines to the latest top-40 hits. Every Wednesday, members look forward to learning funky dance moves and laughing out loud together while they perfect dance steps.

Arkansas Alphas took home first place in intramural sand volleyball and came in second during an intense intramural indoor volleyball match against the women of Kappa Kappa Gamma at the University of Arkansas.

More than 60 members of Indiana Epsilon helped raise more than \$15,000 to help fight pediatric AIDS while dancing at DePauw University's Dance Marathon.

Louisiana Betas at Louisiana State University won the intramural basketball championship and made it to the finals in flag football.

California Thetas at the University of California, Davis were named champions of the annual intramural powder puff football game.

Kentucky Gammas hosted their first Frats at Bat tournament at Eastern Kentucky University. For the event, all 11 fraternities at the university competed in a softball tournament. The teams also earned extra "runs" by bringing children's books, which members donated to local libraries, to the tournament.



Pennsylvania Etas Dyan Argento and her Little Sis Jenna Cellini entered and won this year's Bocce ball tournament at Lafayette College. Bocce is a game during which players throw balls to try and land closest to a small ball already in the field.



California Delta House Manager Rebecca Steinberg balances her officer duties, earning a degree in world arts and culture and participating on the University of California, Los Angeles dance team.



South Dakota Alpha members play for Lambda Chi Alpha and Pi Kappa Alpha softball teams, as well as their own winning intramural volleyball team at the University of South Dakota.



Virginia Epsilon Kitty Gainer recently returned from training for the Olympic modern pentathlon, a one-day event of running, riding, shooting, fencing and swimming. Kitty missed the Olympic team by a few spots, but was happy to be back at the University of Virginia. Above: Virginia Epsilons Arielle Bertman and Cleo Pahlmeyer cheer for Elizabeth Cornelison at her first varsity field hockey game of the season.

COLLEGIATE NEWS

North Carolina Alpha Brittany Biddy is a member of the equestrian club at the University of North Carolina. The team competes against eight other schools.



Georgia Alphas from the University of Georgia and Alabama Gammas from Auburn University met in Atlanta to watch the Atlanta Braves play baseball.

The California Beta Chapter has members who play varsity sports at the University of California, Berkeley. Molly Brady, Erin Hafkenschiel and Brooke Toeller play lacrosse; Jillian Davis plays volleyball; Daniela DiGiacomo, Mary Anderson, and Lauren Calnero play water polo; and Shelby Kraushaar is on the dance team.

More than 40 percent of the Ohio Eta chapter participates in Denison University varsity or club sports. In 80 percent of these sports, Pi Phis hold positions as captains. The soccer and track and field teams won conference championships with Pi Phis as team captains. Members on the swimming and diving team

helped the team place first in its conference and third at nationals.

At Oklahoma State University, Oklahoma Betas placed first in women's and co-rec intramural sports for the 11th consecutive year.

As part of their work-study program, Illinois Epsilons Amanda Balen and Emily Mraz work for the Northwestern University football team as managers, which entails going to every practice, setting up equipment, throwing balls and keeping statistics. Both members also accompanied the team to the Motor City Bowl over the winter break.

At Bucknell University, Pennsylvania Betas Jamie Finkelman and Melissa Capparell are varsity swimmers. Emma Schachner, Vanessa Bendetti, Tracy Ryan and Sarah Saunders play on the varsity lacrosse team. Rachel Adika is a member of the varsity golf team.

Illinois Eta Stacey Conrad is a member of the Millikin University women's basketball team, which made it into the top 32 teams in the NCAA.

Tennessee Gammas raised more than \$500 for Arrowmont during their Pi Fly softball tournament at the University of Tennessee. Fifteen fraternities and the university football team formed softball teams to play in the all-day event.

Florida Deltas enjoy watching the University of Florida Gator's football games. The chapter buys season tickets in a block and enjoys a barbecue after each game.

A record amount of snow fell at Pennsylvania State University this year and Pennsylvania Epsilons made the most of it. Chapter members loaded up busses and headed to Tussey Mountain, a local ski area, for the annual sledding sisterhood event, Snow Angels Tubing Trip.

New Mexico Alphas Shay Lorentzen, Jordyn Whisenant and Samantha Wiley are three members of the cheerleading team at the University of New Mexico. The team recently placed sixth in its division at the Universal Cheerleading Association National Cheerleading Competition.

Michigan Epsilons at Western Michigan University enjoy playing intramural flag football and intramural indoor soccer.

Nebraska Gamma Lindsay Royer completed 18 hours of pre-med study last semester at Creighton University while being a member of the university dance team. As a Jays Dancer, Lindsay attended practice Monday–Thursday at 5:30 a.m. and attended the majority of men's and women's basketball games.

Indiana Eta Melissa Byers attends every sporting event at Indiana-Purdue University-Fort Wayne to play her clarinet in the Pep Band.

At the University of Washington, three Washington Alphas play on the women's soccer team, two are cheerleaders, one is a gymnast and another member is a lacrosse player.

Louisiana Alphas enjoy participating in Tulane University's intramural sports. "Sports teach us the value of sportsmanship along with healthy competition and gives us a unified coordination, which can help us both on the courts and off," Sarah Olim says.

At Michigan State University, Michigan Gammas organized their first Arrow Open golf tournament. Members invited friends and family to the event, through which \$1,000 was raised for Arrowmont.

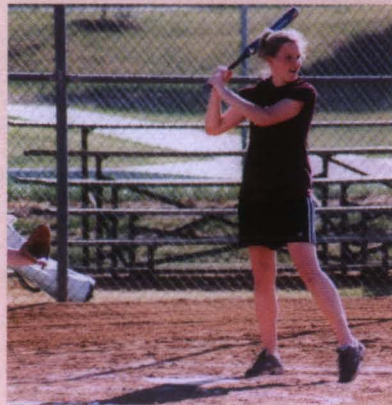
Oregon Gammas held Bowl O' Rama, a bowling event to raise money for Doerenbeckers Children's Hospital. At the end of the competition, one participating group went home with a first place trophy and Pi Phis took \$800 to the hospital.

Pennsylvania Theta Trista Felty is a strong component on Villanova University's swim team and took part in the Big East tournament this year. Emily Beck is on the women's crew team where she is the coxswain of the boat.

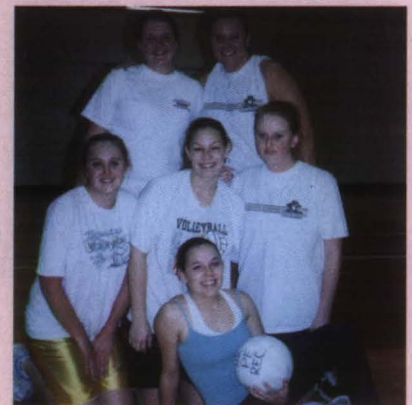
At the Virginia Polytechnic Institute and State University Greek Awards, Virginia Zeta was given the sportsmanship award for their positive attitude during intramural sports. The award is voted on by all the other sororities and fraternities on campus.



Rain or shine, Florida Betas always support the Seminoles. Members braved stormy conditions to watch one of the football season's most exciting games against the University of Miami.



Texas Zetas are members of Baylor University sports teams including soccer, club soccer, water skiing and cheerleading. Above: Jennifer Dempsey is ready for the pitch during an intramural softball game.



Wyoming Alphas decided to create an intramural volleyball team, which finished a successful season by making it to quarterfinals at the University of Wyoming's intramural, season-end tournament.



Tennessee Deltas posed for a quick shot after they cheered their football team to win the New Orleans' Bowl. This was a landmark experience for the University of Memphis. The squad later competed in and won UCA nationals in the Division 1A all-girl championship.

COLLEGIATE NEWS

At the University of Missouri, 20 out of 50 Tiger Hostesses are Missouri Alphas. Recently they met former Tiger Hostess and university alumna, Sheryl Crow.



Oregon Alphas and the men of Sigma Chi and Pi Kappa Alpha participated in co-ed, intramural volleyball at the University of Oregon. The Pi Phi/Sigma Chi team made it to the playoffs.

Minnesota Alphas formed two teams of women for an annual game of powder puff football against other sororities at the University of Minnesota. Team members made shirts and chanted Pi Phi cheers to show team unity.

As a chapter, California Mus participated in Gamma Phi Beta's Boot Camp, a day of various field events, to raise money to help children with AIDS. Pi Phis won the overall competition. Member Ashleigh Powalski is a member of Pepperdine University's cheer squad, which placed fourth at a national competition.

NCAA March Madness brought just that to the University of Nevada, and Nevada Alphas enjoyed making school history with the rest of the Wolf Pack. The men's basketball team was in the Sweet 16 for the first time ever, and to show their support Pi Phis decked out their chapter house in school colors and sent a care package with each of the players and coaches for the trip to St. Louis, Missouri for the game.

Several Tennessee Betas from Vanderbilt University ran in the Nashville Country Music marathon. The members said that training together brought them closer as friends.

Kentucky Alphas brought home first place in intramural floor hockey at the University of Louisville. Leigh Anne Davis also won the one-on-one intramural basketball tournament.

Ohio Zetas have started their own Sunday night bowling league at Miami of Ohio University. The women have had fun getting to know each other better during this sisterhood event.

Kansas Alphas Katie Knighton, Kelly Meyer and Emily Rusch are members of the University of Kansas swimming and diving team. Their hard work and dedication contributed to the team's third place finish in the Big 12 Championship. Additionally, both Kelly and Emily were named to the Swimming and Diving Academic All-Big 12 Team. The team itself was named an Academic All-American team.

California Delta Irana Gomez, is one of the University of California, Los Angeles' most spirited mascots, "Josephine Bruin." This year, with Irana's help, UCLA placed second in the National Mascot Championships.

Ohio Alphas participated in Beta Theta Pi's volleyball tournament at The Ohio University to raise money for the American Red Cross.

A group of Utah Alphas from the University of Utah participated in the annual Bowl for Kids' Sake, which raised money and awareness for Big Brothers, Big Sisters of Utah. Members were given an award for the best and most evident team spirit.

Florida Alphas won the coveted C-Cup at Stetson University. The cup is given to the organization who receives the most points throughout the year for intramural participation and wins.

Illinois Zeta Melinda McIntire is president-elect of the University of Illinois panhellenic system.

Pennsylvania Zetas at Washington and Jefferson College helped Special Olympic participants sharpen their skills during an annual practice prior to the actual competition.

California Zeta Kelly Regan is a member of the University of California, Santa Barbara's highly ranked lacrosse team. Kelly practices five days a week for two hours each day and then competes in tournaments on the weekends.

Each year, Washington Betas adopt one player on the Washington State University's baseball team, and support him throughout the season by making signs for each home game, inviting him to dinner and making goodie bags with good luck notes.

Indiana Theta Maggie English, Illinois Zeta Kara Dollaske and Wisconsin Delta Jillian Hayes joined forces to organize and help run the Park Ridge Memorial Day Soccer Tournament in Park Ridge, Illinois.

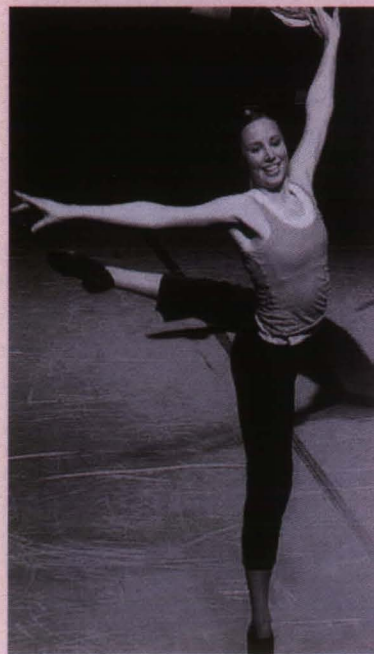
Two Kentucky Betas, Meridith Long and Stacey Ginter, are members of the University of Kentucky Wildcat Danzers. Mallory Gantz is a sideline pom squad member, and Jennifer Goin plays varsity women's basketball.

In February, Wyoming Alpha Michelle Hartwell was the National Society of Collegiate Scholars' Scholar of the Day. Michelle is an astrophysics major and plays the violin in the University of Wyoming's symphony. Michelle plans to pursue a career with NASA after college.

At the University of North Carolina, North Carolina Alpha philanthropy chairman Lisa Tufano was recently featured in "The Chapel Hill News" for organizing a community golf tournament to raise money for Project ALS.



At Iowa Wesleyan College, Iowa Alphas Rachel Gardner, LaSharon Duckett and Brooke Preisman support Stephanie Duckett (third from left above) who coaches ninth grade girls basketball.



Washington Gamma Annie Terry was named president of the University of Puget Sound's reperatory dance group. Numerous Pi Phis, including Anna Hansen (above), are featured in the biannual performances each year.



Florida Epsilons enjoy intramural soccer at the University of Central Florida. Falyn Greenberg and Jennifer Rauscher share a laugh between kick-offs at a soccer game.



Maine Alphas (right) are on their way to being the University of Maine's sorority all points intramural champions, which would be their second year to win this title. The chapter has already won field hockey, swimming, track and field, basketball and floor hockey.

Graduate Consultants

STRONG LEADERSHIP SKILLS AND POSITIVE ATTITUDES...

These eight women fit the bill as Pi Beta Phi Graduate Consultants. For the next year they will serve as ambassadors for the Fraternity. Seven women will be Traveling Graduate Consultants (TGCs), visiting chapters coast to coast. One consultant will be based with the new chapter at North Carolina State University as a Resident Graduate Consultant (RGC).



ORIANA BERTUCCI TGC
Ontario Gamma, University of Guelph

Oriana has an honors degree in international development and French studies. She has held the following positions at her chapter: President, Vice President of Social Advancement, Treasurer and Arrow Correspondent. Her other campus activities include varsity rowing team member, French Club, LINK partner for international students, and an orientation volunteer.

I believe that in upholding the values which our Founders set out 136 years ago, we will continue to develop leaders of tomorrow. It is in the support

networks that exist that will allow us to remain a premier organization for women.



LAUREN DUTTON
RGC — North Carolina Delta
Arkansas Alpha, University of Arkansas

Lauren holds a bachelor of arts degree in Spanish and pre-med. She served her chapter as President, Vice President of Moral Advancement and Rick Management Educator. Lauren also volunteered in her community with the Links to Literacy program, Reader's Theatre Project, Race for the Cure, English as a Second Language and at the Northwest Arkansas Free Health Clinic.

While at convention, I was encouraged to attend the meeting about applying to be a TGC. I walked away being excited at the thought of being able to give back to Pi Phi in this way.



JOAN HESS TGC
Oklahoma Alpha, Univ. of Oklahoma

Joan earned her degree in public relations, with a minor in sociology. She was her chapter's President and Vice President of Social Advancement. Other campus activities included Order of Omega, Public Relations Student Society of America and Alpha Kappa Delta Sociology Honors Society. She was also a Read Across America tutor and an American Heart Walk and Children's Miracle Network volunteer.

The gift of Pi Phi will follow me throughout my life. I want to show the same gift to all its members nationwide.



ERIN LEWIS TGC
Virginia Zeta, Virginia Polytechnic Institute & State University

Erin earned a Bachelor of Science degree in human nutrition, foods and exercise. Her chapter leadership roles included President, Efficiency Chair and Standards Board Member. She also volunteered as a wellness peer educator, an office of health education intern, Panhellenic judicial board member, and as a volunteer at the New River Valley Free Clinic.

Serving as a Graduate Consultant for a year is a commitment that only the most passionate people can obtain. They must be passionate about the Fraternity, but also be passionate and driven enough to make a difference at any chapter they visit.



MEGAN McHUGH TGC

Ohio Eta, Denison University

Megan graduated with a bachelor of science degree in psychology and a minor in educational studies. At her chapter, she served as President and Social Chairman. Her community activities included tutoring, volunteering for Relay for Life, and participating in the Homeless and Hunger Awareness Week and the IMPACT Leadership Seminar.

I became interested in serving as a Graduate Consultant after I attended the 2003 Convention in Anaheim. It was there that I first recognized the breadth of opportunities my membership in Pi Beta Phi affords, and saw real-life examples of the longevity of Pi Phi sisterhood.



ERIN O'CONNOR TGC

California Mu, Pepperdine University

Erin majored in organizational communication with an area of emphasis in business administration. She was her chapter's Membership Chairman and Public Relations Chairman. Her

campus and community activities included Malibu Presbyterian Small Group Leader, volunteer at Brentwood Rehabilitation Center, Women's Identity Seminar Chairperson and a New Student Orientation Counselor.

Through my experiences in this organization, I have come to wholeheartedly believe in the values and mission of this Fraternity, and its profound impact on the character of all members.



KATHRYN O'NEAL TGC

Virginia Gamma, College of William & Mary

Kathryn holds a bachelor of arts degree in government and psychology. She served her chapter as the Vice President of Moral Advancement, Efficiency Chair, and Nominating Committee Chairman. Her other activities included Inter-Sorority Council Vice President of Programming, Greek Leadership Institute Committee member, Chairman of the Student Alumni Council, and Freshman Orientation Aide.

I want to be a Traveling Consultant so other Pi Phis throughout the country will learn of all the opportunities and experiences that can come from their Fraternity experience. I want to help continue the traditions that have been passed down to me and to help chapters develop their own traditions.



REBECCA TABB TGC

California Alpha, Stanford University

Rebecca earned a bachelor of arts degree in economics with honors and has a minor in mathematics. She has held the following positions at her chapter: Transition Officer, Historian, Vice President of Moral Advancement and Social Chairman. Her other activities included volunteering as the treasurer and co-founder of the Stanford Figure Skating Club, serving as Inter-Sorority Council Recruitment Chair, tutoring underprivileged students and participating in the Stanford Leaders for Public Service Leadership Development Program.

Through my experiences in chapter leadership and last summer's convention, I am convinced that I want to be deeply involved in the Fraternity throughout my life and dedicate my skills to help the organization reach its goal of being a premier organization for women.

Remember

As your club or chapter celebrated Founders' Day, did anyone wonder if there are any Pi Phi relatives of Founders out there? Are there those wearing the badge today who are directly related to those who wore the badge in their hair to chapel so long ago? Yes, there are! The following women are Pi Phis who call several of the Founders family.



INEZ SMITH SOULE

- Greatest happiness was to help her friends and neighbors



COURTNEY SOULE MITCHELL

- Great granddaughter

Courtney pledged Washington Alpha in the 1960s. Both she and her sister, Washington Gamma Virginia Soule Hietpas, were initiated with Inez's badge, which they then donated to the Washington Gamma chapter. Other Pi Phis in her family include Eleanor Soule Crosby and Ruth Henry who are both Inez's granddaughters. Although Courtney works part time researching and writing exploration safety manuals for mining companies, she enjoys volunteering. She volunteers at the WISH (Women's Information Safe House) Foundation, with other members from the Vancouver, Canada Alumnae Club. "Work hard to achieve the best education you can from your school and give generously of your time and efforts to your philanthropic programs," Courtney writes. "We are very privileged women who have a lot to give back to society and make the world a better place."



JENNIE NICOL

- A pioneer in medicine
- Received her medical degree



LINDSAY AND COREY McCANN

- Great, great, great nieces

Lindsay and Corey heard about Pi Phi and Jennie from their aunt. Both are Illinois Alphas — Lindsay is currently an admission representative for Monmouth College and Corey is a recent graduate. The only actual relic either have from Jennie is a watch, which is Lindsay's. Lindsay's middle name is Nicol, but pronounced "Nicole." Lindsay

writes that it was special being at Monmouth, and especially Holt House, where they know Jennie actually was. One time while at Holt House Lindsay writes that she heard someone call out to her when no one was around. "I know it wasn't my imagination, but I don't know if it was the wind or ... something else!" she writes. The sisters have both savored the rich sisterhood, friendships and traditions they have experienced through Pi Phi with each other, partly due to their founding connection. "Make the best of Pi Phi and remember the values of true sisterhood bonding," Corey writes.



JENNIE HORNE TURNBULL

- A devoted undergraduate and alumna member

REBECCA GRANT

- Great, great, granddaughter

Rebecca, who pledged at Tennessee Beta this fall, shares her Pi Phi heritage with her aunt, Maryland Beta Patricia Sassano van der Heijden, and her grandmother, Illinois Alpha Eleanor Turnbull

Sassano. Rebecca's great aunt and great-grandmother were also Pi Phis. "The Pi Phis in my family were all so excited about my participation in recruitment," she says. "Even my mother, who's a Kappa, couldn't wait for me to meet the Pi Phis!" And Rebecca hasn't been disappointed. "I am so happy," she says.

CLARA BROWNLEE HUTCHINSON



- Great supporter of Settlement School
- Emma's sister

EMMA BROWNLEE KILGORE



- First chapter president
- Clara's sister

JILL RANDOLPH

- Great, great granddaughter of Clara; great, great niece of Emma
- Jean's daughter

Jill is currently a junior at Monmouth College and the fifth generation to attend the school — Clara and her husband were the first. Jill writes, "I've asked my grandpa, Clara's grandson, a lot about what she and Emma were like. Having always been interested in my family history, I loved to listen to his stories about my ancestors, but especially about Clara and Emma. From what he says, it seems to me that Clara was a very patient and understanding person. The way he described her really reminded me exactly of how my mom is — just the kind of person who makes you not want to do wrong. He made her (Clara) sound stern, but gentle. Emma, on the other hand, sounded like a real spitfire. When I asked about her, he would always say, 'Oh, Aunt Em, you don't want to mess with her.'" Jill has always been proud to be related to the Founders and has found it an honor. She says she has always loved how Clara and Emma, as sisters, did something so incredible. As someone who has always wanted a sister, Jill says now she has "too many sisters to count!"

CONNIE HUTCHINSON HARDIN



- Great granddaughter of Clara; great niece of Emma
- Jean's first cousin

Although Connie attended Monmouth College, she didn't pledge a sorority. Not only is she a descendent of a Pi Phi Founder, but her other great grandmother was the first initiate of Kappa Kappa Gamma. When Pi Phi approached her as an alumna and asked if she would like to join, she said yes. And now as she enjoys her Pi Phi membership she finds being related to a Founder has increased in meaning to her.

JEAN HUTCHINSON RANDOLPH

- Great granddaughter of Clara; great niece of Emma
- Connie's first cousin

Jean attended Monmouth in the mid-1960s, where she pledged Pi Phi. She writes, "After she (Clara) married, she and her husband eventually lived in the house just west of Holt House. My father, (her grandson), told me how he stayed with her when he attended Monmouth College and how she began and ended her day by reading the Bible. Dad also related how excited she was when Pi Phi was reinstated at Monmouth and she received an arrow pin with her name engraved on the back of the shaft. Both Jill [Jean's daughter] and I were initiated with this pin." Jean and her father were both excited when Jill became her family's fifth generation to attend Monmouth, and decided to become a Pi Phi.

FANNIE WHITENACK LIBBEY



- A member of Pi Phi for more than 50 years

MICHELLE LIBBEY



- Great, great granddaughter

Michelle, who is currently the financial analysis flight commander for Andrews Air Force Base in

Maryland, graduated from Park University, which doesn't have a Pi Phi Chapter, and decided to join the Air Force. Michelle had been told of her relationship to Fannie, A Pi Phi Founder. Curiosity took her to Pi Phi's Web site. Shortly after contacting the Grand Vice President of Membership, Michelle was on her way to becoming an Illinois Alpha

alumna initiate. Before she was initiated at the 2003 Convention, she was unaware of the support Pi Phis offer each other. "Pi Phi ladies possess the same dignity and poise I imagine Fannie displayed," she writes. "Although Pi Phi transformed, I believe the Founders' spirit still remains."

Recruitment Redefined ... *Redesigned*

Editor's note: The following article, written by Chi Omega Editor Christine Barnicki, has been distributed to all members of the National Panhellenic Conference (NPC).

Today, rush is called recruitment, rush-ees are potential new members, and the decades-old model of the campus collegian is no longer typical of contemporary college students: Only 16 percent of today's college students attend full time, are 18–22 years of age, and live on campus (Arthur Levine, "The Remaking of the American University" Innovative Higher Education, Summer, 2001); about 75 percent of all four-year college students now earn a paycheck, and about 25 percent of them work full time.

Contemporary students are ethnically, religiously and racially diverse, and come from a wider range of socio-economic backgrounds than ever before: Thirty percent are minorities, 20 percent were born outside the United States or have a foreign-born parent, and 11 percent spoke a language other than English while growing up. Many are also first-generation college students. All face more life

pressures and bring with them a greater array of experiences than students in earlier decades (Mary B. Marcy, "Diversity, Demographics, and Dollars: Challenges for Higher Education," July 2002).

It became clear to NPC that, to maintain a stable or growing membership and offer relevant experiences for an increasingly diverse population, new systems must be developed.

In 2001 the NPC Recruitment Processes Committee began a two-year study to gather data from many and varied constituents. The majority felt there should **not** be just one system of

CAMPUSES ARE DIFFERENT:

63% have four NPC groups or less
28% have 5–9 NPC groups
9% have 10–21 NPC groups

QUOTAS VARY:

17% have Quotas less than 10
24% have Quotas of 11–19
18% have Quotas of 20–29
19% have Quotas over 30
22% have unknown Quotas

recruitment; each campus is unique and therefore requires a unique approach. A menu of four recruitment styles models has been adopted:

Continuous Open Recruitment

On-going, informal events of all sizes organized by chapters and their alumnae. Bids offered directly to potential new members.

Minimally Structured Recruitment

Members and potential members get to know one another in a relaxed, informal atmosphere without structured events. Each chapter determines the times and types of social occasions they will have, and may include a Preference event. The campus Panhellenic organization determines the date for issuing bids.

Partially Structured Recruitment

Events established within a more loosely defined time frame provide potential members the flexibility to attend events according to their own schedules and interests. Potential members are required to visit each sorority at least once; a Preference event and Bid Day conclude recruitment.

Fully Structured Recruitment

This traditional recruitment has structured rounds and events highlighting positive aspects of sorority life and responsible membership.

In consultation with the campus Greek adviser and with the approval of their NPC area adviser, college Panhellenics will determine which recruitment style best fits their campus. Implementation will begin in January, after the college Panhellenics on each campus have assessed their needs using material provided by NPC. No-Frills Recruitment will remain a goal on every Panhellenic campus.

NPC also established a recruitment committee to monitor trends and recommend and implement recruitment strategies. A new recruitment handbook will also be developed.

A marketing plan will be developed to assist all NPC member groups, College Panhellenics and Alumnae Panhellenics with marketing programs that will focus on a variety of publics.

Quota will be set as late as possible in the recruitment process to place the greatest number of women. How the expectations of potential members are managed plays a large role in whether or not they will complete the recruitment process and be satisfied with the outcome.

COMPARISON OF TRADITIONAL AND CONTEMPORARY STUDENT

TRADITIONAL STUDENT	CONTEMPORARY STUDENT
Student studies full time; 0% work	Over 70% of students work
18–22 years old, no family responsibilities	41% over 25 years old, many with family responsibilities
Lives on campus	Commutes to campus
Ethnically and socio-economically homogeneous student body	Ethnically and socio-economically diverse student body
Graduated in top 10–25% of high school class	Graduated in top 50% of high school class
Completes BA degree in four years	Completes BA degree in five–six years
Students spend all four years at the college they enter	Many transfer students

(Sources: National Center for Education Statistics, 2000; S. Choy, Access and Persistence: Findings from 10 Years of Longitudinal Research on Students, American Council on Education, 2002)

Recruitment & Legacies



Texas Epsilon Courtney Bullen keeps Pi Phi in the family. Also pictured are her grandmother, California Beta Claire Stoffel Killeen, and mother, Oregon Alpha Katherin McClelland Bullen.

WHO IS A LEGACY?

A legacy is a daughter, sister or granddaughter of a member. Some chapters also consider step-daughters, step-sisters and great-granddaughters as legacies. A legacy often brings a rich heritage to our Fraternity through a supportive family and a lifelong understanding of Fraternity values.

Grand Council encourages chapters to give special attention to legacies whose academics, activities, community service and leadership skills are comparable to those of other potential members. Legacies are given special consideration in the membership selection process.

It is important to understand that membership is by mutual selection. It is the responsibility of chapters to select the members who they determine will enhance their chapter.

PREPARING LEGACIES

Alumnae have a responsibility to educate legacies about the recruitment experience and the Greek system. A potential member should feel free to pledge the Greek group where she is most comfortable. She should enter recruitment with an open mind, look

at a variety of Greek groups and select the one that is best for her. Hopefully family members understand

the emotional issues faced during the recruitment process and do not place undue expectations on the legacy or the chapter. Knowing a legacy has made the decision that best suits her will bring joy to all on Bid Day.

CHAPTER RESPONSIBILITY

Chapters have the responsibility of following Pi Beta Phi policies on legacies, which include:

- The Chapter Membership Chairman shall inform the chapter of all potential new members known to be Pi Beta Phi legacies.
- A legacy shall be invited to at least one invitational round of recruitment.
- A legacy who attends a preference party shall be placed on the first bid list.



Arizona Beta Jeanne Schroeder O'Connell and daughter California Epsilon Megan O'Connell are legacies of Illinois Epsilon Mary Kahlenberg Schroeder.

HOW YOU CAN HELP

- Fill out a Recruitment Information Form (RIF) on any prospective member you wish to sponsor. The form on page 42 may be copied. You also can find the RIF, as well as a legacy form, at www.pibetaphi.org.
- Return the completed form to the respective Chapter Membership Chairman. Collegiate chapters and Chapter Membership Chairmen are listed beginning on page 38.
- Send the RIF early. Complete information about the potential member's qualifications is essential. If possible, include a picture of the potential member.
- Although only one RIF is necessary, letters are welcome from all alumnae who may wish to write and



Illinois Eta Barbara Hall Heely stands next to her legacies Missouri Alpha Catherine Nester and Illinois Zeta Cass Heely Nester.

Chapter Membership Chairmen

CHAPTER ADDRESSES, RECRUITMENT DATES AND CHAPTER MEMBERSHIP CHAIRMEN FOR 2004-05

RECRUITMENT DATES: EARLY = 1-15 OF THE MONTH LATE = 16-31 OF THE MONTH

ALABAMA

Alabama Alpha, Birmingham-Southern College
Laurne Mallory
BSC Box 549110
Birmingham, AL 35254
Early September

Alabama Beta, University of Alabama
Pammy Kaye
847 Magnolia Drive
PO Box 11067
Tuscaloosa, AL 35486
Late August

Alabama Gamma, Auburn University
Lauren Wiggins
Boyd Hall — Dorm J
Auburn, AL 36849
Early August

ARIZONA

Arizona Alpha, University of Arizona
Tiare Toulon
c/o Kathi Kleinman
1930 East Missouri
Phoenix, AZ 85016
Late August

Arizona Beta, Arizona State University
Nicole Zukowski
739 East Apache
Tempe, AZ 85281
Early September

Arizona Gamma, Northern Arizona University
Kerry Quarry
PO Box 6036
Flagstaff, AZ 86011
Late August

ARKANSAS

Arkansas Alpha, University of Arkansas
Amy Johnson
502 West Maple
Fayetteville, AR 72701
Late August

Arkansas Beta, University of Arkansas, Little Rock
Nikki Lester
3117 South Taylor Street
Little Rock, AR 72204
Late September

CALIFORNIA

California Alpha, Stanford University
Dyani Jones
517 Cowell Lane
Stanford, CA 94305
Late March 2005

California Beta, University of California, Berkeley
Sara Lopus
2325 Piedmont
Berkeley, CA 94704
Late August

California Gamma, University of Southern California
Shannon Quinn
667 West 28th Street
Los Angeles, CA 90007
Late August

California Delta, University of California, Los Angeles
Megan Schlatter
700 Hilgard
Los Angeles, CA 90024
Late September

California Epsilon, San Diego State University
Lindsey Rogalla
5080 College Place
San Diego, CA 92115
Early September

California Zeta, University of California, Santa Barbara
Karen Phinney
763 Camino Pescadero
Goleta, CA 93117
Early September

California Eta, University of California, Irvine
Taryn Hanano
218 Arroyo Drive
University of California, Irvine
Irvine, CA 92612
Late September

California Theta, University of California, Davis
Corrie Allen
445 Russell Boulevard
Davis, CA 95616
Late September

California Iota, California State University, Chico
Jennifer Beyer
413 West Fourth Street
Chico, CA 95926
Early September

California Kappa, University of California, San Diego
Jennifer White
7770 Regents Road #238
San Diego, CA 92122
Early October

California Lambda, University of California, Riverside
Kelly Yoder
1020 Linden Street #12
Riverside, CA 92507
Early October

California Mu, Pepperdine University
Janelle Schroeder
24255 Pacific Coast Highway
c/o Campus Life, Pi Beta Phi
Malibu, CA 90263
Late September

California Nu, Loyola Marymount University
Katy Bradford
1 LMU Drive, MS.2659
Los Angeles, CA 90045
Early January 2005

COLORADO

Colorado Alpha, University of Colorado
Lauren Brown
890 11th Street
Boulder, CO 80302
Early September

Colorado Gamma, Colorado State University
Hillary Moore
625 West Lake Street
Fort Collins, CO 80521
Late August

Colorado Delta, Colorado School of Mines
Elizabeth Kennedy
910 13th Street
Golden, CO 80401
Late August

Colorado Epsilon, Univ. of Colorado, Colorado Springs
Renee Mudd
1420 Austin Bluffs Parkway
Colorado Springs, CO 80918
Early September

CONNECTICUT

Connecticut Alpha, University of Connecticut
Rebecca Henderson
10 Whitney Road
Storrs, CT 06268
Early September

Connecticut Beta, Yale University
CMC
PO Box 202319
New Haven, CT 06520
Late September

FLORIDA

Florida Alpha, Stetson University
MaryAnne Schwind
421 Woodland Ave., Box 8237
DeLand, FL 32720
Early October

Florida Beta, Florida State University
Jennifer Grubbs
519 West Jefferson Street
Tallahassee, FL 32301
Late August

Florida Delta, University of Florida
Sarah Bruno
37 West Fraternity Row
Gainesville, FL 32603
Late August

Florida Epsilon, University of Central Florida
Jenna Miller
4304 Greek Park Drive
Orlando, FL 32816
Late August

GEORGIA

Georgia Alpha, University of Georgia
Courtney Hudson
886 South Milledge Avenue
Athens, GA 30605
Early August

IDAHO

Idaho Alpha, University of Idaho
Andrea Bicek
Pi Beta Phi
PO Box 3028
Moscow, ID 83843
Early August

CHAPTER MEMBERSHIP CHAIRMEN

ILLINOIS

Illinois Alpha, Monmouth College
Katie Brown
318 North 9th Street
Monmouth, IL 61462
Late August

Illinois Beta-Delta, Knox College
Jessica Van Dyke
Knox College Box 1737
396 South Academy Street
Galesburg, IL 61401
Late January 2005

Illinois Epsilon, Northwestern University
Amanda Balen
636 Emerson Street
Evanston, IL 60201
Early January 2005

Illinois Zeta, University of Illinois
Renee Reilly
1005 South Wright Street
Champaign, IL 61820
Early September

Illinois Eta, Millikin University
Sarah Cholke
235 North Fairview
Decatur, IL 62522
Late January 2005

Illinois Theta, Bradley University
Amanda Allison
1004 North Institute Place
Peoria, IL 61606
Late August

Illinois Iota, Illinois State University
Elizabeth Robbins
709 West College Avenue
Normal, IL 61761
Early September

INDIANA

Indiana Alpha, Franklin College
Nicole Bean
501 East Monroe Street
Eley Hall, Box C
Franklin, IN 46131
Late September

Indiana Beta, Indiana University
Laura Kowalczyk
928 East 3rd Street
Bloomington, IN 47406
Early October

Indiana Gamma, Butler University
Molly Gesenhues
831 West Hampton Drive
Indianapolis, IN 46208
Early January 2005

Indiana Delta, Purdue University
Megan Wallace
1012 W. State Street
West Lafayette, IN 47906
Early September

Indiana Epsilon, DePauw University
Kristin Emerson
303 South Locust Street
Greencastle, IN 46135
Early February 2005

Indiana Zeta, Ball State University
Meghan McCorkle
Ball State Student Center L-1, Box 39
Muncie, IN 47306
Early September

Indiana Theta, Valparaiso University
Jennifer Obrecht
324 Scheele Hall
Valparaiso, IN 46383
Early January 2005

IOWA

Iowa Alpha, Iowa Wesleyan University
Bridget Jones
607 North Broadway, S-T Hall
Mount Pleasant, IA 52641
Late September

Iowa Beta, Simpson College
Abbey Crall
406 North Buxton
Indianola, IA 50125
Late September

Iowa Gamma, Iowa State University
Lauren Knoche
208 Ash Avenue
Ames, IA 50014
Early August

Iowa Zeta, University of Iowa
Erin Pipkin
815 East Washington Street
Iowa City, IA 52240
Late August

Iowa Eta, Drake University
Sarah Clark
1219 34th Street
Des Moines, IA 50311
Early September

KANSAS

Kansas Alpha, University of Kansas
Stephanie Adams & Lindsey Nordmeyer
1612 West 15th Street
Lawrence, KS 66044
Late August

Kansas Beta, Kansas State University
Shannon Starkey
1819 Todd Road
Manhattan, KS 66502
Early August

KENTUCKY

Kentucky Alpha, University of Louisville
Jennifer Cornell
2030 Unity Place
Louisville, KY 40208
Early August

Kentucky Beta, University of Kentucky
Shannon Voss
409 Columbia Avenue
Lexington, KY 40508
Late August

Kentucky Gamma, Eastern Kentucky University
Danielle Nimer
128 Powell Building
Eastern Kentucky University
Richmond, KY 40475
Late August

LOUISIANA

Louisiana Alpha, Tulane University/ Newcomb College
Lindsey Waddell
7014 Zimple Street
New Orleans, LA 70118
Early January 2005

Louisiana Beta, Louisiana State University
Robin Penzato
4040 West Lakeshore Drive
Baton Rouge, LA 70808
Early August

MAINE

Maine Alpha, University of Maine
Elizabeth Jarrell
111 College Avenue
Orono, ME 04473
Early September

MICHIGAN

Michigan Alpha, Hillsdale College
Corrine Streck
304 Hillsdale Street
Hillsdale, MI 49242
Late January 2005

Michigan Beta, University of Michigan
Kelli Klumpp
836 Tappan
Ann Arbor, MI 48104
Early September

Michigan Gamma, Michigan State University
Cristin Bay
343 North Harrison Road
East Lansing, MI 48823
Late September

Michigan Epsilon, Western Michigan University
Lacey Wylie
1400 Fraternity Village Drive
Kalamazoo, MI 49006
Late September

MINNESOTA

Minnesota Alpha, University of Minnesota
Lindsay Garber
1109 5th Street SE
Minneapolis, MN 55414
Early September

CHAPTER MEMBERSHIP CHAIRMEN

MISSISSIPPI

Mississippi Alpha, Univ. of Southern Mississippi
Terra-Rae Firth
USM Southern Station Box 8376
Hattiesburg, MS 39406
Early August

Mississippi Beta, University of Mississippi
Megan Wantland
PO Box 8347
University, MS 38677
Late September

MISSOURI

Missouri Alpha, University of Missouri
Sara Tegeler
511 East Rollins
Columbia, MO 65201
Late August

Missouri Beta, Washington University
Samantha Spicer
1 Brookings Drive, Box 1182
St. Louis, MO 63130
Early January 2005

Missouri Gamma, Drury University
CMC
Pi Beta Phi Suite
900 North Benton Avenue
Springfield, MO 65802
Late August

MONTANA

Montana Alpha, Montana State University
Megan Anderson
1304 South 5th Avenue
Bozeman, MT 59715
Late August

NEBRASKA

Nebraska Beta, University of Nebraska
Mindy Maxson
426 North 16th Street
Lincoln, NE 68508
Late August

Nebraska Gamma, Creighton University
Katherine Howard & Lindsey Koester
Student Center SC-110
2500 California Plaza
Omaha, NE 68178
Early January 2005

NEVADA

Nevada Alpha, University of Nevada
Kara Iannone
869 North Sierra Street
Reno, NV 89503
Late August

NEW JERSEY

New Jersey Alpha, Princeton University
Jessie Nagin
20 Nassau Street, Room 408
Princeton, NJ 08540
Early September

NEW MEXICO

New Mexico Alpha, University of New Mexico
Sara Davis
1701 Mesa Vista NE
Albuquerque, NM 87106
Late August

New Mexico Beta, New Mexico State University
Heather Parker
300 Greek Complex
Las Cruces, NM 88001
Early September

NEW YORK

New York Alpha, Syracuse University
Darlene Dolhun
210 Walnut Place
Syracuse, NY 13210
Early January 2005

New York Delta, Cornell University
Lauren Martinez & Kathryn Conrad
330 Triphammer Road
Ithaca, NY 14850
Early January 2005

New York Epsilon, Rensselaer Polytechnic Institute
Michelle Delarm
8 Sherry Road
Troy, NY 12180
Early September

NORTH CAROLINA

North Carolina Alpha, Univ. of North Carolina
Amy Armstrong
109 Hillsborough Street
Chapel Hill, NC 27514
Late August

North Carolina Beta, Duke University
Suzanne Roberts
Box 99315
Durham, NC 27708
Early January 2005

North Carolina Gamma, Wake Forest University
Ashley Pruitt
PO Box 8745
Winston-Salem, NC 27109
Early January 2005

North Carolina Delta, NC State University
Barbara LaMaster
GVPM@pibetaphi.org
Early October

NORTH DAKOTA

North Dakota Alpha, University of North Dakota
Sara Lasham
409 Cambridge Street
Grand Forks, ND 58203
Late August

OHIO

Ohio Alpha, Ohio University
Katie Cervenak
6 South College Street
Athens, OH 45701
Late September

Ohio Beta, Ohio State University
Anna Massenelli
1845 Indianola Avenue
Columbus, OH 43201
Early January 2005

Ohio Epsilon, University of Toledo
Andrea Mason
2999 West Bancroft, Unit C-1
Toledo, OH 43606
Early September

Ohio Zeta, Miami University
Margaret Freeman
PO Box 793
Oxford, OH 45056
Early January 2005

Ohio Eta, Denison University
Katy Gray
425 West College Street
Granville, OH 43023
Late January 2005

Ohio Theta, Bowling Green State University
Mary Shaw
1317 East Wooster Street
Bowling Green, OH 43402
Early September

Ohio Iota, University of Dayton
Dustie Smith
421 College Park
Dayton, OH 45409
Early September

OKLAHOMA

Oklahoma Alpha, University of Oklahoma
Katie Griffin
1701 Elm Avenue
Norman, OK 73072
Early August

Oklahoma Beta, Oklahoma State University
Casey Marsico
324 South Cleveland Street
Stillwater, OK 74074
Early August

OREGON

Oregon Alpha, University of Oregon
Julie Omiecinski
1518 Kincaid Street
Eugene, OR 97401
Early October

Oregon Beta, Oregon State University
Jennifer Paddock
2685 NW Taylor
Corvallis, OR 97330
Late September

Oregon Gamma, Willamette University
Emily Conway
900 State Street, H-230
Salem, OR 97301
Late January 2005

PENNSYLVANIA

Pennsylvania Beta, Bucknell University
Amy Chung
Box-C 3948, Bucknell University
Lewisburg, PA 17837
Late August

Pennsylvania Gamma, Dickinson College
Margaret Smith
College and Louther Streets
PO Box 4888
Carlisle, PA 17013
Early September

Pennsylvania Epsilon, Pennsylvania State University
Elizabeth Riva
5 Hiester Hall
University Park, PA 16802
Late September

CHAPTER MEMBERSHIP CHAIRMEN

Pennsylvania Zeta, Washington & Jefferson College
Keyanna Standard
50 South Lincoln Street, Box 181
Washington, PA 15301
Early February 2005

Pennsylvania Eta, Lafayette College
Daniela DiSandro
Farinon Center, Box 9485
Easton, PA 18042
Early September

Pennsylvania Theta, Villanova University
Emily Beck
800 Lancaster Avenue
Villanova, PA 19085
Early January 2005

Pennsylvania Kappa, Lehigh University
Kristina Nied
Emery Building — University Drive
Bethlehem, PA 18015
Early January 2005

SOUTH DAKOTA

South Dakota Alpha, University of South Dakota
Courtney Mydland
118 North Plum Street
Vermillion, SD 57069
Early September

TENNESSEE

Tennessee Beta, Vanderbilt University
Caroline Reynolds
118 24th Avenue South
Nashville, TN 37212
Early January 2005

Tennessee Gamma, University of Tennessee
Christina Flores
1531 Cumberland Avenue, Suite 202
Knoxville, TN 37916
Early August

Tennessee Delta, University of Memphis
Kathryn Smith
University of Memphis
3131 Campus Postal Station
Memphis, TN 38152
Early September

TEXAS

Texas Alpha, University of Texas
Aly Ehlinger
2300 San Antonio
Austin, TX 78705
Late August

Texas Beta, Southern Methodist University
Ashley Bonilla
3101 Daniel Avenue
Dallas, TX 75205
Early January 2005

Texas Gamma, Texas Tech University
Megan Pappas
#17 Greek Circle
Lubbock, TX 79416
Late August

Texas Delta, Texas Christian University
Kristy Cubstead
PO Box 296883
Fort Worth, TX 76129
Late August

Texas Epsilon, University of North Texas
Natalie Wise
PO Box 310668
Denton, TX 76203
Late August

Texas Zeta, Baylor University
Allison Lillard
PO Box 85618
Waco, TX 76798
Early January 2005

Texas Eta, Texas A & M University
Anne Castleberry
1601 Munson Avenue
College Station, TX 77840
Late August

UTAH

Utah Alpha, University of Utah
Ashley Williams
1443 East 100 South
Salt Lake City, UT 84102
Early September

VERMONT

Vermont Beta, University of Vermont
Lauren Costello
369 South Prospect Street
Burlington, VT 05401
Early September

VIRGINIA

Virginia Gamma, College of William & Mary
Allison Lynch
CSU 4232
PO Box 8795
Williamsburg, VA 23186
Early September

Virginia Delta, Old Dominion University
Laura Kallick
2122 Webb Center
Norfolk, VA 23529
Early September

Virginia Epsilon, University of Virginia
Carey Hogg
1509 Grady Avenue
Charlottesville, VA 22903
Early January 2005

Virginia Zeta, Virginia Polytechnic & State University
Stephanie Woodburn
100 SPH-E
Blacksburg, VA 24060
Early January 2005

Virginia Eta, University of Richmond
Kathryn Penza
RC 55, 28 Westhampton Way
Univ. of Richmond, VA 23173
Early January 2005

Virginia Theta, Washington & Lee University
Elizabeth Little
6 Frank Parsons Way
Lexington, VA 24450
Early January 2005

WASHINGTON

Washington Alpha, Univ. of Washington
Katie McConnell
4548 17th NE
Seattle, WA 98105
Early September

Washington Beta, Washington State University
Paige Commerce
NE 825 Linden Street
Pullman, WA 99163
Late August

Washington Gamma, Univ. of Puget Sound
Madeline Halmo
1059 Wheelock Student Center
Tacoma, WA 98416
Late January 2005

WEST VIRGINIA

West Virginia Alpha, West Virginia University
Rebecca Rehe
1493 University Avenue
Morgantown, WV 26505
Late September

WISCONSIN

Wisconsin Alpha, University of Wisconsin
Hollie Wingate
130 Langdon Street
Madison, WI 53703
Late August

Wisconsin Delta, Marquette University
Elizabeth Challice
911 North 14th Street
Milwaukee, WI 53233
Late January 2005

WYOMING

Wyoming Alpha, University of Wyoming
Sarah Shellhart
1502 East Sorority Row
Laramie, WY 82070
Late August

CANADA

Alberta Alpha, University of Alberta
Roan Corbett
11019-88 Avenue
Edmonton, AB T6G 0Z3 CANADA
Early September

Ontario Alpha, University of Toronto
Paulina Jarmula
220 Beverley Street
Toronto, ON M5T 1Z3 CANADA
Early September

Ontario Beta, University of Western Ontario
Fern Goldstein
293 Central Avenue
London, ON N6B 2L9 CANADA
Early September

Ontario Gamma, University of Guelph
Robin Steylen
PO Box 30008, Park Mall Postal Outlet
2 Quebec Street
Guelph, ON N1H 8J5 CANADA
Early September

Recruitment Information Form (RIF)

To be used by Pi Beta Phi alumnae only

- This form may be copied.
- Include a picture of potential new member if possible.
- Send this form directly to the Chapter Membership Chairman (CMC) or process through your Alumnae Club Recruitment Information Chairman (ACRIC) if potential member is from the same area. For addresses of CMCs, consult pages 38–41 in this issue of *The Arrow*. Do not send this form to Headquarters.

Name of Potential Member _____ Attending _____ College _____

Home Address _____
Street _____ City _____ State _____ Zip _____

Year in College: Freshman Sophomore Junior Senior

If transfer student: College attended _____ College GPA _____

High School attended _____
Name _____ City _____ State _____ Zip _____

Class Size _____ Rank _____ GPA _____ SAT/ACT (if known) _____

Parent or Guardian _____

Pi Beta Phi Relatives _____
(sister, mother, grandmother)

Other Greek Affiliated Relatives _____

Please check ONE of the following:

- Wish to highly recommend Wish to recommend

Please check ONE of the following:

- Known personally by an alumna (if so, how long?) _____
- Only factual information included. Source of information _____
- Other _____

Signed _____
Individual Pi Beta Phi Alumna

Address _____
Street _____ City _____ State _____ Zip _____

Telephone _____ Date _____
Area Code Number

LIST SCHOOL AND COMMUNITY ACTIVITIES AND HONORS: (Attach another sheet if needed.) _____
Comment on special interests, talents, leadership qualities, personality. _____

News & Notes

MEMBER RELATIONS



WENDY WOOLARD DROCHELMAN, a MISSOURI ALPHA and graduate of the University of Missouri-Columbia, has recently joined

the Pi Beta Phi Headquarter's staff in the newly created position of Director of Member Relations. In this role, Wendy will develop and execute marketing and outreach strategies to improve lifelong commitment and satisfaction of all members.

Prior to joining the Headquarters staff, Wendy was the client services supervisor for Shook, Hardy & Bacon L.L.P. in Kansas City, Missouri for more than three years. In this role, she directed programs and proposals for several Fortune 500 companies, while working with more than 500 attorneys worldwide. Wendy was also a marketing communications specialist for Watlow Electric Manufacturing Company, where she handled all public relations and marketing for three of their five key markets.

Wendy is currently pursuing a master of arts degree in media communications with an emphasis in public relations from Webster University in St. Louis. This past Memorial holiday weekend, she married Brian Drochelmann in St. Louis.

PI FOR PI PHI

The Fraternity's GPA for Spring '03 was 3.141 — pi! Congratulations to all collegians for this great score.

ARROW EDITOR

Diane Balogh is Pi Beta Phi's new Director of Communications and Editor of *The Arrow*. She graduated from the University of Missouri-Columbia's school of journalism with a bachelor of journalism degree in the news/editorial sequence.

"I love having this opportunity to spread the word about all of the exciting things that are going on with Pi Phis and the Fraternity," she says.

Before joining Pi Beta Phi, Diane held a variety of positions, including editor of a suburban weekly newspaper; media relations assistant for a children's hospital; and communications manager for both a grocery chain and a social services agency. In the late '80s she started a communications consulting business, which allowed her to spend more time with her two sons and her husband, Jim.



Diane has been very active with the International Association of Business Communicators and this July she will become president of the St. Louis chapter.

AIMING HIGH AT 75!

UTAH ALPHA is celebrating its 75th year. Please save the weekend of Oct. 8-10 to join your sisters in the festivities. The weekend is sure to be fun-filled with laughter and memories. For information, visit www.angelfire.com/home/saltlakepiphis/

If you have questions, or would like to serve on the committee, e-mail aiminghighat75@hotmail.com

MANITOBA ALPHA

Oct. 1 - 2, the Winnipeg Alumnae Club will celebrate the 75th anniversary of the founding of the Manitoba Alpha chapter. Several get-togethers are planned. For information, contact Margaret Semple by e-mail at daberry@mts.net or phone toll free at 1-866-410-5666.

The theme for the celebration is "Forever Friends — 75 Years of Manitoba Alpha."

COLORADO GAMMA

Colorado Gamma will celebrate its 50th anniversary at Colorado State University in Fort Collins. The celebration will begin on Aug. 13 with an evening barbecue at the chapter house, followed by a Cookie Shine. On Aug. 14, there will be a birthday luncheon at the Holiday Inn. Contact Judy Cutler Stickney at judystick@aol.com or 480-964-3870 for registration information.

ADVISER OF THE YEAR

New Mexico Alpha Alex Doyle Beach, AAC Chairman at the University of New Mexico, was recently named chapter adviser of the year for the university. Alex has served as an adviser to this chapter for more than 25 years. According to Debbie Morris, Greek Life Adviser, "Alex is extremely deserving of this award."



Debbie Morris, presents the award to Alex Doyle Beach, right.

HAZING HOTLINE

Do you think hazing is taking place in a chapter? Concerned collegians, alumnae, parents and administrators please call to report any suspected hazing activities. The Pi Beta Phi Hazing Hotline is 800-320-1867.

PI PHI EXPRESS

Check out great Pi Phi merchandise at www.pibetaphi.org



PI PHI'S BRIGHTEST STARS!

The 2003–04 award winners will be announced in an exciting new way on Pi Beta Phi's Web site. These chapter, alumnae club and individual awards are normally announced during Leadership Seminars or Conventions. So this

summer, log on to www.pibetaphi.org July 15 to see if you, your club or your chapter is a star!

CITIZEN OF THE YEAR

The *Arizona Daily Sun* named Marjorie Thorpe McClanahan, Tennessee Beta, as one of its 2003 Citizens of the Year. She received this honor for her commitment to making Flagstaff a better place to live. In addition to her Pi Phi work as a member of the Arizona Gamma AAC, Marj also has volunteered with the Northern Arizona Healthcare Board and the Flagstaff Community Foundation.

INDIANA ETA CLOSES

Grand Council regretfully announces the closing of Indiana Eta at Indiana–Purdue University–Ft. Wayne.

At a chapter meeting in April, with Grand Council members present, chapter members voted to relinquish the charter. The chapter closed at the end of the 2004 Spring semester, due

to changing campus conditions, not as a result of risk management problems. The Fraternity welcomes the new Indiana Eta alumnae into our alumnae organizations.



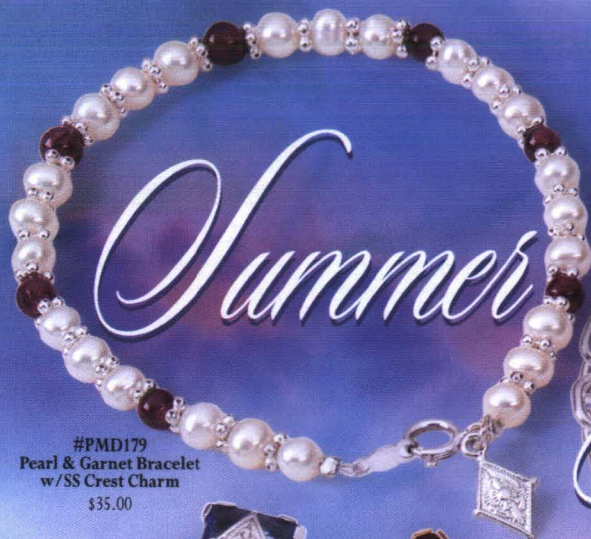
Photo by Steve Balogh

The Indiana Epsilon pledge class of 1954 wanted to do something special to celebrate 50 years of Pi Phi friendship. So, 10 members of the graduating class of 1957 met in St. Louis to celebrate Founders' Day and visit some favorite attractions, like the Missouri Botanical Garden, above. Seated in the front row, from the left, are: Virginia Armstrong Weise, Judie Roser Smith, Peg Steffen Sant'Ambrogio, Loretta Lewis Pedott, Nancy Ford Charles and Suzanne Decosted Breckenridge. Standing in the back are: Carol Rudolph Stoddard, Anne Jaudon Campbell, Marilee Lidikay McCallister and Rosanne Miller Jacks.

PANHELLENIC PRESIDENTS 2004

Congratulations to the 34 Pi Phis who serve as the Panhellenic President on their respective campuses:

Birmingham-Southern College	Jessica Vincent
University of Arizona	Brook Camerer
University of Northern Arizona	BreeAnn Hillman
University of Arkansas	Leslie Mooney
University of AR, Little Rock	Marjorie Fisher
Pepperdine University	Lauren Haveman
Stanford University	Alex Davies
University of Idaho	Kerri Keeney
University of Illinois	Melinda McIntire
Knox College	Sarah Lull
Monmouth College	Lindsay Blohm
Iowa Wesleyan College	Christena Miller
Iowa State University	Leigh Thiedeman
University of Iowa	Jen Ringgenberg
University of Minnesota	Christina Magnuson
Princeton University	Kerry Willoughby
University of New Mexico	Cari Crappell
Rensselaer Polytechnic Institute	Anne Marinaro
University of North Carolina	Leah Suddreth
Miami University	Emily Semans
University of Toledo	Allison Gonzalez
University of Oregon	Jessica Miller
Willamette University	Jennifer Schoap
Lafayette College	Dyan Argento
University of Tennessee	Kelley Golden
Texas A & M University	Katie Cleveland
Texas Tech University	Emily Curtis
Southern Methodist University	Ellen Kline
Old Dominion University	Shari Slovikosky
University of Richmond	Blair Falck
Virginia Tech	Jennifer Allison
University of Puget Sound	Kasey Stanislav
University of West Virginia	Rina Shah
University of Alberta	Bethan Franklyn



#PMD179
Pearl & Garnet Bracelet
w/SS Crest Charm
\$35.00



#PMD185
Aquamarine
Crest Ring
SS \$150.00



#PMD186
Garnet
Crest Ring
10K \$225.00



#PMD124
Swirl Ring w/Garnets
SS \$85.00



#PMD180
Bracelet
w/Heart Charm
SS \$65.00



#MD311
Aquamarine & Garnet Badge
w/Diamond Point
10K \$180.00



#PMD181
Garnet Slider
Necklace
SS \$99.00

#PMD182 Aquamarine Slider Necklace
SS \$99.00

#PMD183 CZ Slider Necklace
SS \$99.00
(not shown)

Summer Jewels

To Order Call:
1.800.322.1867

Hours: Monday–Friday: 8:00am–5:00pm CST

www.pibetaphi.org

Pi Beta Phi Fraternity

1154 Town and Country Commons Drive • Town and Country, MO 63017

Not all ring sizes are stocked.

Masters
OF DESIGN

Official Jeweler to Pi Beta Phi

MY 50-YEAR PIN!???

Today my husband handed me a package containing my 50-year pin from Pi Beta Phi. There must be some mistake. When I was president and handed out this pin, it only happened to old ladies. Why am I getting one?

Thinking back on rush with a mix of giggly girls from a cross section of lifestyles who became a pledge class, I am amazed at the cohesive group we became. Back then, many of us began working after two years of college, so we had little time to tie our hearts together, but tied they are even after all this time.

No matter where I lived, *The Arrow* found me.

I enjoyed reading about how the Pi Phi

angels began to organize and stretch their wings to reach beyond themselves. Settlement School and Arrow in the Arctic were the first steps. Now, the arrow is piercing problems across the world. This loving diversity is also showing in the mixture of races we now include.

Marriage and a more permanent location put me into a delightful alumnae group. What wonderful opportunities I had to tie my heart to more lifetime friends. We worked with nearby campus chapters, planned our alumnae meetings, attended conventions, played bridge and generally had a wonderful time.

Meanwhile, all of us were living our lives, raising our families and pursuing our careers or other interests while sharing our time and talents in the community.

Then one day, we retired, but we never stopped to think about it. We moved to a new location and again I sought out Pi Phis, but not much happened until this year when a new friend and I found enough Pi Phis to form a pocket. Already, this tiny

group is showing signs of developing into a loving and supportive gathering.

Now that I think it over and look backward, 50 years is hardly enough time to embrace all the joy Pi Phis have added to my life.

Thanks for it all.

Roene Burghardt Cammack
Iowa Alpha
Sedona, Arizona

BULLETIN BOARD

When Alabama Beta Susan Gogel Parris moved to Las Vegas, she didn't know a soul. So, she logged onto the Pi Phi Web site, www.pibetaphi.org, to search for alumnae clubs. She posted a message stating that she was looking for a job. Checking back, she was surprised to find a response from her big sister, whom she'd lost track of seven years before.

"I'm so thankful to the Pi Phi Web site, because without it I would have never found my Big Sis again," Susan says.



In Memoriam

Due to space constraints, *The Arrow* will only print the obituary of a former Grand President. *In Memoriam* lists the names of all other members who have died. Initiation year, and month and year of death follow each member's name. If you know that a sister has died, please inform Headquarters. However, only those names accompanied by an official notice will be listed in *The Arrow*. Official notices include a newspaper obituary, a funeral program/prayer card, or a listing in a college/university alumnae newsletter. Also acceptable are obituaries from newspaper Web sites — attach the article and e-mail it to Pat Hook at pat@piphico.org

ALABAMA BETA

Jessie Anna Stange Katz, 1955; January 2004

ALBERTA ALPHA

Edna Redfern Baxter, 1939; January 2004
Margaret Blundell Price, 1947; January 2004

ARIZONA ALPHA

Barbara Best Connor, 1946; March 2004
Joella Coffin Miller, 1927; December 2003
Shelley Musser Sauerzopf, 1962; February 2004

ARKANSAS ALPHA

Linda Cooper, 1976; October 2003
Jo Ann Wester Sandlin, 1958; September 2003

CALIFORNIA EPSILON

Jeanne Kloss Blair, 1952; January 2004
Mary Hathaway Moon, 1949; March 2004
Kellee Murchison-Bennett, 1988; January 2004

COLORADO ALPHA

Betty Ann Mollin Bower, 1937; November 2003
Josephine (Dodie) Spindler Loche Ladner, 1925; February 2004
Shirley Cunningham Luthy, 1940; January 2004
Helen Houston Myers, 1934; March 2003
Virginia Grant Phipps, 1931; December 2003
Helen Goudelock Taylor, 1927; October 2003

COLORADO BETA

Barbara Beeler Brennan Benson, 1949; March 2004
Betty Forney Mitchell, 1938; September 2003

CONNECTICUT ALPHA

Priscilla Merchant Mueller, 1943; March 2004

D.C. ALPHA

Margaret Lavender Betzel, 1937; November 2003
Josie E. Keebler, 1951; January 2004

FLORIDA ALPHA

Dorothy Douglass Dickey, 1921; October 2003
Elizabeth (Bette) Stover Keith, 1933; January 2004
Dorothy M. Mosiman, 1924; December 2003
Damaris Hague Rutledge, 1946; March 2004

FLORIDA BETA

Jane Moore Howe Brown, 1932 affiliated
Indiana Gamma; March 2004

GEORGIA ALPHA

Pat Ridgway McCurdy, 1952; January 2004

ILLINOIS ALPHA

Constance Chatten Graham, 1939; November 2003
Alice McDougall Jensen, 1930; September 2003

ILLINOIS EPSILON

Mary Buckley Coughlin, 1936; February 2004
Betty Jones Downey, 1942; March 2004

ILLINOIS ZETA

Ruth Touzalin Busch, 1927; February 2004
Caryl Cavanaugh Lewis, 1942; January 2004
Jeanne Fairbairn Marriott, 1934; December 2003

ILLINOIS ETA

Katherine Alsip Moore, 1927; January 2004

ILLINOIS THETA

Carol Velde Meythaler, 1947; February 2004
Harriet Cook Ringel, 1947; October 2003
Sybil Stevens, 1950; February 2004

INDIANA ALPHA

Martha Herring Snyder, 1940; December 2003

INDIANA GAMMA

Helen Barton DeVan, 1936; January 2004
Margaret Kapp Duff, 1934; April 2003
Mary Sumner Tichenor, 1929; August 2003
Sue Canny Wagner, 1943; February 2004

INDIANA DELTA

Marjorie Blocker Honeck, 1936; November 2003
Dorothy Smiley Stagg, 1939; March 2004
Nan Zachary Strickling, 1940; November 2003

INDIANA EPSILON

Dorothy Brown Life, 1942; January 2004
Sharon Farkas Williamson, 1961; November 2003

IOWA ALPHA

Dorothy Venell Gleason, 1943; December 2003
Nyta Latimer Harwood, 1941; February 2004
Harriett Grant McKibben, 1930; October 2003
Frances White Moore, 1927; February 2004
Helen M. Weibley, 1934; December 2003

IOWA GAMMA

Martha Owen Arends, 1949; February 2004
Annabelle Havens Mahlmann, 1935; February 2004

IOWA ZETA

Martha Jilly Kimbell, 1932; March 2004

KANSAS ALPHA

Anne Stodder McEwen, 1948; November 2003

KANSAS BETA

Jackie Christie Davison, 1950; February 2004
Laura Hart Lancaster, 1927; December 2003
Frances Allison Weaver, 1943; January 2004

KENTUCKY ALPHA

Mary Frances (Frankie) Beattie Hendershot, 1945; November 2003

LOUISIANA ALPHA

Barbara Bizzell Barry, 1948; February 2004
Rebecca MaryEllen Glahn, 1999; April 2004
Martha McDonough Matthews, 1943; December 2003

MAINE ALPHA

Ruby Carlson Williams, 1926; September 2003

MARYLAND ALPHA

Carrie-Mae MacNair Blount, 1947; March 2004

MICHIGAN ALPHA

Margaret Schowe Franckle, 1928; December 2003

MICHIGAN BETA

Marjorie Ashley Dewey, 1940; March 2004
Elise Ely Upham, 1929; December 2003

MICHIGAN GAMMA

Nancy Lumsden Sullivan, 1970; January 2004

MINNESOTA ALPHA

Marlyn Dysthe Hadfield, 1949; June 2003
Nina Hill Parker, 1928; February 2004

MISSISSIPPI ALPHA

Kimlyn Elder Orgeron, 1971; February 2004

MISSOURI ALPHA

Virginia Nystrom Durham, 1937; February 2004
Nancy Higgins Gale, 1942; May 2003
Marjorie (Marty) Woolley Senter, 1943; May 2003

MISSOURI BETA

Dorothy Gaskill Barnard, 1944; February 2004
Beulah (Boots) Tucker Hughes, 1932; February 2004
Madeleine Closs Lafon, 1924; November 2003
Carol Crowe Metcalfe, 1924; January 2004

MISSOURI GAMMA

Suzanne Schellhardt George, 1944; October 2003

NEBRASKA BETA

Marjorie (Midge) Johnson Bender, 1947; November 2003
Catharine Weller Guthrie, 1930; January 2004
Vernelle Henninger Horn, 1945; December 2003
Rosemary Reynolds Miller, 1947; February 2004

NEVADA ALPHA

Mary Alice Bradley Erickson, 1947; January 2004

NEW YORK ALPHA

Irene Burrell Fleming, 1931; February 2004

NEW YORK GAMMA

Beverly Georg Chamberlain, 1943; January 2004

NEW YORK DELTA

Mary Case Adams, 1946; November 2003
Ainslee Haffner Johnson, 1988; February 2004
Marcia Brown Kowen, 1934; January 2004

NORTH CAROLINA BETA

Barbara DeLapp Booth, 1951; December 2003
Mary Stanter Kepler, 1933; November 2003

NORTH DAKOTA ALPHA

Donna Jaeger Staedler, 1955; February 2004

OHIO ALPHA

Carol Lloyd Allshouse, 1958; December 2003
Mildred Ellison Bean, 1931; December 2003
Lenny Knabb Riney, 1976; March 2004
Marjorie Wheaton Walker, 1937; December 2003
Nancy Nellis Wilson, 1960; March 2004

OHIO BETA

Jane Bangert Bosart, 1935; January 2004
Mary Cook Morris, 1928; March 2003
Carol Annis Sims, 1944; December 2003

OHIO DELTA

Marjorie Forth Dornbirer, 1947; February 2004
Ruth Williams Wunderlich, 1937; December 2003

OHIO EPSILON

Theresa Blazic Semel, 1961; October 2003
Ellen Gibson Sanders Tufts, 1962; January 2004

OHIO ZETA

Mary Ann Williamson Huggins, 1950; February 2004
Barbara Nussbaum King, 1946; January 2004

OKLAHOMA ALPHA

Eloise Cherryhomes Boyum, 1933; December 2003
Beverly Diggs Buxton, 1966; November 2003
Lisa Kimrey Smith, 1969; November 2003

OKLAHOMA BETA

Gloria Berry Langdon, 1946; November 2003
Mary Lou Shannon Pruett, 1949; December 2003

ONTARIO ALPHA

Clayton Callaway Burton, 1926; November 2003
Mary Jane (M.J.) Gilmore Perry, 1946; December 2003

OREGON ALPHA

Maureen (Maurie) Cotta Estey, 1950; February 2004
Barbara Byers Hume, 1946; December 2003
Dolores Tobler Walling, 1940; November 2003

OREGON BETA

Lucille Alphonse, 1938; January 2004
Marilyn Duke-Woodside, 1962; March 2004
Elizabeth Clark Gibson, 1927; May 2003

PENNSYLVANIA BETA

Janet Blair Bogar, 1930; February 2004
Dorothy Druckemiller Gass, 1931; September 2003

SOUTH CAROLINA ALPHA

Sandy Deacon Whitcomb, 1964; October 2003

SOUTH DAKOTA ALPHA

Katherine Colvin Dougherty, 1933; November 2003

TENNESSEE ALPHA

Jane Fergus Palmer, 1935; September 2003
Mae Johnson Glenn Scott, 1941; December 2003

TENNESSEE BETA

Anne Blair Bond, 1940; November 2003

TENNESSEE DELTA

Teresa Beckham Bell, 1976; March 2004

TEXAS ALPHA

Laura Grogan Crane, 1981; January 2004
Betty Munson Donaldson, 1939; December 2003
Kay Abernathy Everett, 1941; April 2003
Frances Flaig Norsworthy Neale, 1947; December 2003

TEXAS BETA

Betty Hipp DeMontrond, 1947; December 2003
Sally Sutton Henry, 1963; December 2003
Phoebe Hipp Leigh, 1945; November 2003
Margaret Ward Miller, 1938; July 2003
Katharine Sistrunk Roberts, 1937; April 2003
Patsy Lake Vandermeer, 1953; December 2003
Phyllis Murphey Wilkin, 1949; October 2003

UTAH ALPHA

Elizabeth Adele Mays Edens, 1947; February 2004
Mary Creer Shaver, 1933; November 2003
Georgiana Burton Wunderli, 1960; January 2004

VERMONT ALPHA

Nancy Finley Garrett, 1944; March 2004
Mary Duryee Weeks, 1930; February 2004

VIRGINIA ALPHA

Glennes Teter Clifford, 1935; October 2003
Nancy Hughston Sloan, 1958; February 2004
Audrey Bolinger Westbrook, 1926; November 2003
Margaret Lowe Wilbourn, 1923; March 2004

WASHINGTON ALPHA

Madeleine Donohoe Anderson, 1944; March 2004
Catherine Rein Engle, 1963; January 2004
Catherine (Kit) Feuille Furber, 1946; February 2004
Neva Fuller Green, 1956; February 2004
Donna Thompson Mann, 1947; December 2003

WASHINGTON BETA

Mary Hungate Buckley, 1926; January 2004
Dorothy Wiscombe Busch, 1939; November 2003
Claribel Raasch Forrest, 1934; November 2003
Betty Bement Pence, 1929; March 2004

WEST VIRGINIA ALPHA

Genevieve Brown Gist, 1927; October 2003

WISCONSIN ALPHA

Jane Trowbridge Roth, 1939; December 2003

WISCONSIN BETA

Harriet Frazier Beaubien, 1939; January 2004
Joanne Solomon Gyure, 1948; October 2003

WYOMING ALPHA

Eloise Steavenson Sullivan, 1934; June 2003

DO YOU KNOW?

Total number of Pi Phis ever initiated —	223,969
Total number of mailable alumnae —	118,990
Number of collegians in '03/'04 year —	11,796
Current number of chapters —	134
Number of alumnae groups —	351

Number of dues-paying alumnae members — **18,659**

**Are you one of the 18,659? If not, please
consider sending \$20 to Headquarters today,
or
pay your dues online at www.pibetaphi.org**

HAVE YOU MOVED OR CHANGED YOUR NAME?

Help us keep our database updated. Edit your member profile online at www.pibetaphi.org, or clip this form, place in a stamped envelope and send to: Pi Beta Phi Headquarters, 1154 Town & Country Commons Drive, Town & Country, MO 63017.

Please print changes:

Initiated Name (first/middle/maiden)

Name (first/maiden/last)

New Address

City/State/Zip

Phone Number

E-mail

Chapter and Year of Initiation

If you are an officer in the Fraternity, please give title so that we may update officer lists.

PI BETA PHI FRATERNITY
1154 TOWN & COUNTRY COMMONS DRIVE
TOWN & COUNTRY, MO 63017

CHANGE SERVICE REQUESTED

NONPROFIT
ORGANIZATION
U.S.
POSTAGE PAID
Dulles, VA
PERMIT NO. 490