

# *The Arrow* OF PI BETA PHI



**No Matter the Letter,  
We're all Greek Together**

Page 4



PI BETA PHI FRATERNITY  
ΠΒΦ  
Founded 1867

#### FOUNDERS

Emma Brownlee Kilgore  
Margaret Campbell  
Libbie Brook Gaddis  
Ada Bruen Grier  
Clara Brownlee Hutchinson  
Fannie Whitenack Libbey  
Rosa Moore  
Jennie Nicol, M.D.  
Inez Smith Soule  
Fannie Thomson  
Jennie Horne Turnbull  
Nancy Black Wallace

#### MISSION STATEMENT

The mission of Pi Beta Phi Fraternity for Women is to promote friendship, develop women of intellect and integrity, cultivate leadership potential and enrich lives through community service.

#### VISION STATEMENT

Pi Beta Phi Fraternity is committed to being recognized as a premier organization for women by providing lifelong enrichment to its members and contributing to the betterment of society.

#### CORE VALUES

Integrity  
Honor and Respect  
Lifelong Commitment  
Personal and Intellectual Growth  
Philanthropic Service to Others  
Sincere Friendship

# *The* **Arrow** OF PI BETA PHI



## Features

- 4** No Matter the Letter, We're all Greek Together
- 12** How Will You Make Your Mark for Literacy?
- 22** Kisses for the Troops
- 24** Get LinkedIn® to Pi Phi

### Follow us online:



Facebook®  
[www.facebook.com/pibetaphi](http://www.facebook.com/pibetaphi)



Pinterest®  
[www.pinterest.com/pibetaphi](http://www.pinterest.com/pibetaphi)



LinkedIn  
[www.linkedin.com](http://www.linkedin.com)



Twitter®  
[www.twitter.com/pibetaphihq](http://www.twitter.com/pibetaphihq)



Pi Beta Phi Blog  
[www.pibetaphiblog.org](http://www.pibetaphiblog.org)



YouTube®  
[www.youtube.com/pibetaphihq](http://www.youtube.com/pibetaphihq)

*The Arrow of Pi Beta Phi* is published by Pi Beta Phi Fraternity, 1154 Town & Country Commons Drive, Town & Country, Missouri 63017. POSTMASTER: Send address changes to *The Arrow of Pi Beta Phi*, 1154 Town & Country Commons Drive, Town & Country, Missouri 63017.

LinkedIn® is a registered trademark of LinkedIn Corporation.

Facebook® is a registered trademark of Facebook, Inc.

WordPress® is a registered trademark of Automattic Inc.

Pinterest® is a registered trademark of Cold Brew Labs, Inc.

Twitter® is a registered trademark of Twitter, Inc.

YouTube® is a registered trademark of Google, Inc.





View  
*The Arrow*<sup>®</sup>  
 online at  
[www.pibetaphi.org](http://www.pibetaphi.org)

**ARROW EDITOR**

Constance Dillon  
 editor@pibetaphi.org

**MARKETING & COMMUNICATIONS  
 DIRECTOR, HEADQUARTERS**

Eily Cummings

**CREATIVE DIRECTOR**

Tim Steele

**EDITORIAL STAFF**

Kelly O'Neill  
 Jennifer Whitom Schmidt

**GRAND COUNCIL**

Mary Loy Tatum  
 Grand President

Cara Ballard Sutcliffe  
 Grand Vice President Collegians

Cindy Rice Svec  
 Grand Vice President Alumnae

Diane Bielman  
 Grand Vice President Communications

Rae Wohlhueter Maier  
 Grand Vice President Finance

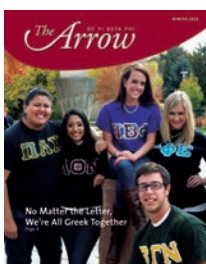
Paula Pace Shepherd  
 Grand Vice President Membership

Julie Carney  
 Grand Vice President Programming

**PI BETA PHI HEADQUARTERS**  
 1154 Town & Country Commons Drive  
 Town & Country, Missouri 63017  
 (636) 256-0680 • FAX (636) 256-8095  
[headquarters@pibetaphi.org](mailto:headquarters@pibetaphi.org)  
[www.pibetaphi.org](http://www.pibetaphi.org)

# Departments

- 2 Perspective
- 3 From our Readers
- 10 Literacy
- 14 Extension
- 16 Campus Living
- 18 Collegiate News
- 23 In Her Words
- 26 Foundation
- 28 Volunteers
- 30 National Panhellenic Conference
- 32 Alumnae News
- 37 Pi Phi Pens
- 39 Remember
- 40 Reunions & Anniversaries
- 43 In Memoriam
- 46 Pi Phi Express<sup>®</sup>
- 48 News & Notes



ON THE COVER: Fraternities and sororities have different rituals and express themselves in different ways, but no matter the letter, we're all Greek together. Read about strong Greek communities beginning on Page 4. Photo by Clark Erwin-Billones.



Member Fraternity Communications Association

## I am a Pi Phi!

Throughout the last 30 years, I have been an active Pi Phi volunteer and officer. Each new role I took on gave me a different perspective on our Fraternity and our place in the Greek world.



LINDA NOEL IBSEN  
National Panhellenic Conference Delegate  
Colorado Beta  
University of Denver

Serving with different Pi Phis helped me create strong friendships and develop a deeper love for our sisterhood. Working through challenges to reach our goals has been rewarding. I am extremely proud of our organization and what we stand for, and I feel blessed for all Pi Phi has given me.

However, much like a collegian who partners with members of her Greek community and realizes being a sorority woman is more than just being a Pi Phi, the Fraternity belongs to a “bigger picture,” as well: the National Panhellenic Conference (NPC).

NPC gives its 26 member groups the opportunity and platform to work together for the common goals of our organizations, to collaborate on issues facing our members and to share the good we are doing for the Greek women of today. After all, we are “All Greek Together,” and it is energizing to be part of this.

When I served on Arizona Beta’s Alumnae Advisory Committee and as Grand Vice President Collegians, I often shared ideas and programs with collegiate counterparts in other NPC groups. We truly are so much alike. A few years ago, I attended a Panhellenic luncheon at Delta Gamma’s convention. I was delighted to see a member of every single NPC group in attendance. When the parade of NPC group banners came through the room, I felt a sense of pride in Pi Phi’s banner and a sense of awe as I viewed all 26 banners standing together. It was a powerful display!

Yes, I am a Pi Phi, but I am also a Greek woman who is part of a much bigger entity. Being part of NPC makes Pi Beta Phi stronger. Working together as Greek women secures the future of our individual organizations.

I am honored to hold the position of Pi Beta Phi’s NPC Delegate and to carry on the strong tradition Pi Phi has in the National Panhellenic Conference.

In the wine and blue,

A handwritten signature in black ink that reads "Linda Noel Ibsen". The signature is written in a cursive, flowing style.

Linda Noel Ibsen



# From our Readers



## The Magic of Sisterhood

Best *Arrow* cover! Beautiful and brilliant North Carolina Beta CAROL INGE WARREN, my angel sister and friend of many years. Thanks, Carol; you have made such a difference in Pi Phi, as well as served all Greeks through the National Panhellenic Conference.

ANNA MOSELEY OSBORN  
Louisiana Beta — Kerville, Texas

Each time I open an issue of *The Arrow*, I am reminded of the tremendous impact Pi Phi has on the women in my family. Since GRACE HILL MILAM was the first young woman pledged to Texas Alpha at the University of Texas in 1902, another has been initiated into North Carolina Gamma, one into Missouri Alpha and 19 of her relatives have been initiated into Texas Alpha. Among them — through the years — have been a Grand Secretary and two Presidents of the Texas Alpha Chapter. The love my family has for Pi Beta Phi is immeasurable.

BETTY HILL COOK  
Texas Alpha — Dallas, Texas

How exciting it was to see a photo of old friends in the Fall *Arrow*! The New York gathering in honor of Illinois Alpha ELEANOR TURNBULL SASSANO pictured six ladies from the area where I used to live. They all look wonderful, and I wish to send them Pi Phi love! I often think of the lovely gatherings we had in Westchester and want my Pi Phi sisters to know they are remembered with much joy and appreciation.

BEVERLY HUME SELMESKI  
Vermont Beta — Afton, Tennessee

## Off the Editor's Hook

It seems like yesterday letters addressed to *The Arrow* Editor were filling the mailbox at Underwood Drive in Atlanta. That Editor was my mother, Nebraska Beta MARILYN SIMPSON FORD (also known as “Simp” to her Nebraska Beta sisters or “msf” to her “Off the Editor's Hook” followers.)

Mom's true passion was her term as *The Arrow* Editor for more than 20 years, volunteering her time and resources to her second love, Pi Beta Phi. (Only dad, my three brothers and I ranked slightly higher.) Articles, pictures and letters poured in and she read every one, editing as she read and sorting into piles that we, the Ford four, had better not touch. The clicking of her fingernails on the typewriter keys was a familiar sound as every article had to be re-typed, re-edited and painstakingly cut and glued in place — all by hand.

I tell you this because mother has Alzheimer's and, even though she may occasionally forget friends and family, she never forgets her beloved Pi Beta Phi or her time as Editor. She reminds me daily she has a deadline to meet and wonders where all the stories are.

I would like to ask a favor of you, her Pi Phi sisters. Will you please take a moment to write a note to my mother? If you know her, maybe tell her of a time you shared in Pi Phi. If your paths have never crossed, perhaps you could tell her what Pi Phi means to you. Please include your chapter information and a picture, if you can.

It would bring such joy to have the mailbox overflowing once more and give mom something to look forward to each day. Please send letters to:

Marilyn S. Ford  
268 Underwood Dr NW  
Sandy Springs, Georgia 30328

Elizabeth “Missy” Gobler  
Sandy Springs, Georgia



We look forward to hearing from you. Email comments to the Editor at [editor@pibetaphi.org](mailto:editor@pibetaphi.org) or mail them to Pi Beta Phi Headquarters, 1154 Town & Country Commons Drive, Town & Country, Missouri 63017.

# NO MATTER THE *Letter*

WE'RE ALL  
**GREEK**  
TOGETHER

*Fraternities and sororities may have different letters, wear different badges and participate in different rituals, but we all share one common trait: a commitment to living our values. A member of Pi Beta Phi is not just a Pi Phi woman — she is a Greek woman.*

The 12 Pi Beta Phi founders started I.C. Sorosis at a time when men's Greek-letter fraternities and student secret societies were gaining popularity. EMMA BROWNLEE KILGORE wrote, "The Beta Theta Pis and Delta Tau Deltas had chapters at Monmouth, and the question was suddenly asked: 'Why cannot college girls have a fraternity?' We thought if young men gained help in this way, young women surely might also."

Today, more than 100 different fraternities and sororities exist on college and university campuses across the United States and Canada. Though each group is unique, men and women overwhelmingly "Go Greek" because they seek friendship and life enrichment. It's no wonder fraternities and sororities are referred to as the "Greek community," because members discover unity, shared interests and common goals.



## *Strength in Attitude, Not Merely Numbers*

The University of Illinois at Urbana-Champaign boasts one of the largest Greek communities in the United States. Its Greek-affiliated students represent 93 chapters spanning four leadership councils: Panhellenic Council, Interfraternity Council, Black Greek Council and United Greek Council. On campus, and in the surrounding town, Illinois Greeks are known for their collaboration and strong support of each other.

“We have lots of different types of sorority and fraternity chapters: some small, some big, some cultural, some religious-based and some related to a particular major or field of study,” says Illinois Zeta ASHLEY DYE, Assistant Dean of Students for Fraternity & Sorority Affairs at the University of Illinois. “But they all have the same core values — and that’s why they come together.”

The University calls upon Greek leadership councils to share opinions on behalf of the students they represent. Panhellenic officers, who represent more than 3,000 women, serve on University-wide task forces and committees. This past fall, several Panhellenic officers participated in an Illinois campus safety walk to identify areas of campus needing nighttime lights installed or replaced.

Illinois Greeks also successfully support each other in community service projects. Ashley describes the Greek students as “cooperative, not competitive” because every chapter hosts a unique philanthropy event to support their specific cause. From fashion shows, to themed-dinners to sports games, students can attend several events in one week.

“A couple sororities have raised more than \$30,000 dollars a year through philanthropy events,” Ashley says. “Our Greek community really embraces service, and all the groups have a commitment to their causes.”

Illinois Greek students even partner with Greek groups at other universities. For the past four years, Illinois Greeks have joined students from surrounding Big Ten universities to volunteer in Chicago elementary schools. The students spend three days during their winter break completing hands-on projects in classrooms, including small group lessons, on-one-one tutoring and presentations about college.

“While there’s always room for improvement, I believe the Illinois Greek community is strong because they are doing good things,” Ashley says. “I love working with student leaders who are passionate about their organizations and also understand the value of working together.”

## *Making an Impact Through Community Partnerships*

Greek students at the College of William & Mary make an impact on their community through a strong partnership with a local service organization: The Arc of Greater Williamsburg (ARC). In fact, the Greek community at William & Mary is synonymous with ARC, which provides support services and education to adults with intellectual and developmental disabilities.

For the past 10 years, William & Mary fraternity men and sorority women have hosted campus-wide ARC events that bring together hundreds of student volunteers and local city residents. Their annual ARC carnival is held each fall and includes carnival games, a petting zoo, bounce houses and a live disc jockey. Other events, like arts and crafts parties and bingo nights, are held several times a year.

“Our partnership with ARC is a great way for our Greek organizations to come together as individual groups, who have the same core values, and make a difference in people’s lives,” says Virginia Gamma JENNIFER WALKER, William & Mary Panhellenic Council President.

More than 300 William & Mary Greek students volunteered at the ARC carnival this year. During the event, volunteers help run games or are “buddies” to the ARC clients to ensure attendees are safe and having a good time.

In honor of the Greek students’ dedication to service and to ARC, the College of William & Mary received the 2009–2011 National Panhellenic Conference Make a Difference Award. The award is given biennially to a select number of Panhellenic Councils from across the United States and Canada. For Jennifer, who became a Panhellenic leader “to get involved with something big picture,” the award is a successful ending to two years of hard work. For the William & Mary Greek community, the award honors the time and service selflessly given by each Greek student.

“Across campus there’s this drive to do a lot of community service — it’s astonishing,” Jennifer says. “Truly, our Greek members just want to help.”

## *By Supporting Each Other, Small Greek Communities Grow*

The Colorado School of Mines, a university with an engineering and applied science focus, has a Greek system made up of seven fraternities and three sororities.



Bucknell University



DePaul University



Colorado State University

In recent years, the Greek community has faced issues with recruitment and housing. To remedy the problems, the Colorado School of Mines Greek community made changes to recruitment rules and started inter-chapter programming. Now, the men and women realize they are strongest when they support each other.

In particular, the Colorado School of Mines sorority women have created new opportunities to interact with each other and develop inter-chapter unity. The women collectively work together to publicize recruitment as Panhellenic, not just individual chapter recruitment. Also, women now serve as recruitment counselors. Even Bid Day, traditionally celebrated by each chapter individually, concludes as a Panhellenic-wide pool party.

“We want to encourage from day one that just because two women aren’t in the same chapter, doesn’t mean they cannot be great friends,” says Travis Smith, Colorado School of Mines Associate Director of Student Activities.

The Colorado School of Mines Greek women also come together for events throughout the year to show support for each other. Last year, women from each chapter formed a Panhellenic team for the Denver area Susan G. Komen 3-Day for the Cure®. The women also have held several

progressive dinners, stopping at each of the three chapter houses for food and activities.

“Greek-wide events are great for developing friendships between chapters because students can discuss their challenges,” Travis says. “It’s great for Greek students to understand they have more in common than in difference.”

### *Passionate Advisors Help Greeks Achieve Success*

As a collegian, New Mexico Beta ANN COOMBES GOODMAN always wanted to hold a leadership role for her chapter. Because she played varsity golf for New Mexico State University, Ann never had time to serve on her chapter’s Executive Council. However, she was thrilled to volunteer as Panhellenic Recruitment Chair her senior year.

One night, while getting to know the other recruitment counselors, Ann discovered how similar she was to the other sorority women. “I realized even if we have different colors and mottos, we all loved and cherished our sororities,” Ann says. “That night, I understood clearly it was the sorority experience I enjoyed, not just the Pi Phi experience.”

Later that school year, a mere four weeks before





*University of Illinois*



*College of William & Mary*



*College of William & Mary*

graduation, Ann visited her campus' Greek advisor to chat about her future career plans. "My advisor asked me what I wanted to do, and I told her I wanted to do what she does," Ann says.

Ten years later, Ann is the Director for the Department of Greek Life at Texas A&M University. She spends each day trying to achieve one goal: helping Greek students recognize they are part of a bigger picture.

"I can help students understand they have an impact on how their chapter unfolds," she says. "I want students to come back next week, next year or after ten years and know they made a difference, and it was because someone gave them the encouragement to do something, and recognize their fraternity or sorority experience is important."

With a Greek population of more than 3,500 students at Texas A&M, Ann finds unique ways to show her students they are united both as Aggies and as Greeks. She teaches an undergraduate class designed specifically for Greek leaders. She hires student interns in the Texas A&M Department of Greek Life, helping them create social media projects or newsletters for their chapters. And under Ann's guidance, a group of Texas A&M Panhellenic women travel to major cities in Texas to speak with high school students about

sorority life, sharing their personal experiences about recruitment and chapter leadership.

"We're only as strong as our weakest chapter," Ann says. "Events like our 'Panhellenic Roadshow' really motivate students to get out and advocate for their Greek system."

### *No Matter The Letter, We're all Greek Together*

Fraternities and sororities have different rituals and express themselves in different ways, but they all hold the same core values. Strong Greek communities are made up of collegians and alumnae who live those values every day. They are leaders on a college campus. They serve their local community. They are supporters of their friends and colleagues. They don't let the negative stereotypes of Greek life become a barrier to their success.

As a member of the Greek community, Pi Beta Phi supports all Greek organizations and is dedicated to promoting and advancing the sorority experience for all members. New Mexico Beta ANN COOMBES GOODMAN sums up the sentiment best: "The more, the merrier. It's the experience of being Greek that's the important part."



*While Pi Phi women make a name for the Greek community on their college campuses, Pi Beta Phi members, Headquarters staff and volunteers build relationships on a national level.*

### *Pi Phis Working 9-5 at Greek HQs*

Every day in Town and Country, Missouri, the Pi Beta Phi Headquarters staff comes together to promote the Fraternity's values and vision. From creating *Leading with Values*® programming or promoting literacy service events, like First Book® distributions, the staff is committed to making Pi Phi a premier Greek organization.

But did you know only one-third of Headquarters' staff are Pi Phis? In fact, members from more than five different fraternities and sororities work at Headquarters, giving their time to a cause close to their hearts: the Greek community. And, Pi Phi Headquarters staff is not the exception. Many other fraternity and sorority staffs are made up of diverse Greek men and women.

As Editor of Zeta Tau Alpha's magazine, *Themis*, Indiana Gamma ASHLEY MARTIN promotes the sorority experience on a daily basis. From writing and editing, to coordinating *Themis* staff and other communication projects, Ashley says she only notices the similarities between Zeta and Pi Phi, not the differences.

"When I tell people I work for another group, they ask if I'm allowed to do that," Ashley says. "But my job makes sense as every Greek organization shares a common mission and values: to create men and women who are socially conscious and will help their communities grow."

She also works closely with other Greek organizations

through Zeta's close geographical proximity to several Greek headquarters in Indianapolis. Staff members meet for lunch and organize philanthropy events, such as a recent yogurt-eating contest to support breast cancer awareness.

Indiana Alpha JENNY MILLER PRATT never dreamed she would work for a Greek organization. Now, as Director of Education and Leadership Initiatives for Alpha Chi Omega, Jenny is passionate about Greek life and its many benefits for collegians and alumnae.

"I love working in the fraternity and sorority movement because as long as we're doing creative and innovative things, I think we're doing great things," Jenny says.

On any given day, Jenny is rolling out an education program for chapters or mentoring women one-on-one. She also collaborates with counterparts at other Greek organizations to create the best and most relevant programming for sorority women — no matter the letter.

"All Greek groups want each other to get better," Jenny says. "We share resources and ideas because we're all working to grow a strong fraternity and sorority community, regardless of the letters on our chest."

### *Stop, Collaborate and Listen*

panhellenic associations were first discussed by women's organizations in an effort to regulate the recruitment, pledging and initiation of university women. In 1891, Kappa





Fraternity Communications Association



Alpha Chi Omega Headquarters

Kappa Gamma invited six groups, including Pi Beta Phi, to attend a convention “called for the purpose of discussing methods for the betterment of fraternity conditions in the different colleges.” The first meeting discussed fraternity jewelry, stationery and inter-chapter cooperation.

A permanent organization, now the National Panhellenic Conference (NPC), was created in 1902. Since then, Greek women’s groups come together as NPC to collectively adopt legislation and standards of conduct. Each group appoints four women to their NPC Delegation: one NPC Delegate and three Alternate Delegates. These women are liaisons between NPC and their respective groups, conveying important news or policies to their members.

Today, NPC is made up of 26 women’s fraternities and sororities and is represented on more than 620 college and university campuses. Each member group operates independently with its own volunteers, staff and programming initiatives, with NPC further supporting all groups to promote women’s fraternity membership.

NPC is not the only organization through which Pi Beta Phi builds relationships. Pi Phi staff and volunteers hold membership in several associations and groups that bring together collegians and alumnae to discuss issues relevant to the Greek community.

Pi Phis have played an important role in the Association of Fraternity Advisors (AFA) since its founding in 1976. AFA was started with the intent to bring together college and university staff members who advised fraternities. In 2009, AFA changed its official name to the Association of Fraternity/Sorority Advisors to better represent its membership (the acronym AFA was retained).

Over the years, AFA has been a critical partner of major fraternity organizations, including NPC. Today, AFA’s membership has increased to 1,441 and the association

engages more than 1,107 in its Annual Meeting.

At the 2011 AFA Annual Meeting in December, Pi Beta Phi’s member development program *Leading with Values* received the AFA Excellence in Educational Programming Award. Pi Beta Phi also hosted a celebratory breakfast at the meeting to recognize Pi Phis who make a career of advising fraternities and sororities.

Additionally, Pi Beta Phi hosted nearly 60 staff members from other fraternities and sororities at Pi Phi Headquarters in the days leading up to the AFA Annual Meeting. The Fraternity/Sorority Staff Educational Programming Roundtable offered an opportunity for participants to exchange ideas, network with colleagues and address common challenges.

Pi Beta Phi staff members also hold membership in the Fraternity Communications Association (FCA), which is made up of editors, writers and communications professionals from fraternities and sororities. Pi Phi’s Marketing and Communications team, including *The Arrow* Editor, attend FCA conferences to help improve the Fraternity’s public relations, social media sites, magazine and the website.

Each year, FCA honors its member organizations with awards, given in a variety of writing, design and communication categories. Pi Beta Phi’s past awards include recognition of our 2009 Convention materials, the Fraternity’s video production and story design and layout in *The Arrow*. The trophies are proudly displayed at Pi Phi Headquarters, including the Marilyn Simpson Ford Award. This award was established in 1989 by Pi Beta Phi to honor longtime *Arrow* Editor MARILYN SIMPSON FORD, Nebraska Beta. It is given to an individual who represents an FCA member organization and has distinguished himself or herself through outstanding service to FCA. ↪

## Literacy Historical Spotlight

### *The* GRACE COOLIDGE LIBRARY



Shortly after the founding of the Settlement School in Gatlinburg, Tennessee, Pi Phi created a library for the students. The library grew over the years, especially with the help of First Lady GRACE GOODHUE COOLIDGE, Vermont Beta. To honor the First Lady and the Fraternity's great pride in her, the school's library became known as the Grace Coolidge Library.

The first Pi Phi teacher at the Settlement School DELLA "DELL" GILLETTE MORGAN, Illinois Zeta, studied the relatively new field of library science in college. When she moved to Gatlinburg, Tennessee, in 1912, she had already spent several years as a librarian in Traverse City, Michigan. Dell wanted to pass on her love of reading to the Settlement school students, so she started a library.

To help gather books for the library, Dell told her chapter she felt Gatlinburg's students needed structured activities, like reading. Dell's chapter sent books on baseball, basketball and football.

The Philadelphia, Baltimore and Denver Alumnae Clubs, to note a few, began collecting books as soon as they heard of the Gatlinburg students' need. In 1914, the Cleveland, Ohio, Alumnae Club sent a box of books to the Settlement School teacher at that time, Vermont Alpha MARY POLLARD, who responded all the books "could be put to use immediately." Her thank-you note inspired the club to gather even more books. Additionally, in 1918, the Monmouth, Illinois, Alumnae Club donated Charles Dickens' books, a set of encyclopedias, poems, fairy tales and novels to the library.

Upon the death of President Warren G. Harding in 1923, Vermont Beta GRACE GOODHUE COOLIDGE became First Lady. In April of 1924, as part of Pi Beta Phi's Eastern Conference, the Fraternity raised \$3,000 to



Pi Beta Phi High School was built in 1928, which housed the Grace Coolidge Library. The library contained books from the original Settlement School, many of which were gathered by Pi Phi.





First Lady GRACE GOODHUE COOLIDGE, Vermont Beta, signed copies of her portrait to raise funds for the Settlement School library. The portrait was commissioned by Pi Beta Phi and now hangs in the White House.

commission a Howard Chandler Christy portrait of Grace, which was presented to the White House. Grand Vice President ANNA ROBINSON NICKERSON, Massachusetts Alpha, spearheaded the sale of photographs of the portrait to raise money to update the Settlement School library.

A table was set up at the Willard Hotel in Washington, D.C., to sell black and white photos of the portrait. Unsigned copies were sold for \$2 each and autographed copies were sold for \$3 each. The First Lady said if she could make a dollar for the Settlement School by simply signing her name, she would work overtime. These signed photos can still be found hanging in Pi Phi chapter houses across the country. By May 1924, almost 350 signed and 50 unsigned copies had been sold. The proceeds of

the photograph's sale were named the Grace Coolidge Library Fund, which was donated to the Gatlinburg community.

In 1928, Pi Beta Phi High School was built. It was important to the Gatlinburg community to use the Grace Coolidge Library Fund to create a new, much larger library as part of the new high school, just as the Pi Phis had intended.

Before transferring the Settlement School books to the new building, a "library work day" took place so the books could be cataloged. Old books were given to five other schools; some books were discarded due to age and wear. By 1930, 3,500 "well selected and readable books" from the original Settlement School library had been cataloged for use in the new high school.

A few years later, Pi Beta Phi High School English teacher MARION RYAN, New York Gamma, took charge of the library. In 1940, the books were completely re-classified and re-cataloged. A copper plate engraved with "Grace Coolidge Library" was placed on the door of the library.

The Grace Coolidge Library is now but a memory — it no longer exists. The engraved copper plate is in the archives at Pi Beta Phi Headquarters. However, the library lives on for the students and Gatlinburg residents whose love of reading was honed in that very special place.



A copper plate engraved with "Grace Coolidge Library" was placed on the library door at Pi Beta Phi High School in 1940. The plate is now part of the archives at Pi Beta Phi Headquarters.

## How Will You Make Your Mark for Literacy?

For Pi Phis, March 2 has become a very special day. On this day, Pi Phis around the world celebrate Fraternity Day of Service in honor of Dr. Seuss® birthday.



In 2012, as part of Pi Beta Phi's newly announced 100-year literacy platform, Read. Lead. Achieve., the Fraternity asks you to focus March 2 efforts specifically on service in your community. Alumnae organizations and

chapters will no longer be asked to decorate bookplates, but you are asked to make your mark on literacy, make your mark in the community and make your mark online.

"There is no one model for what your local literacy service story might look like," said Director Philanthropy ANN CRIGGER SHAW, Arkansas Alpha. "Think of the Fraternity's Read. Lead. Achieve. initiatives, like the Champions are Readers® program, as a starting point from which to develop something special in your area for your local literacy partner."

### Make Your Mark on Literacy

In order to encourage participation in Fraternity Day of Service, Pi Beta Phi will mail promotional bookmarks to all alumnae organizations and chapters in late January. These bookmarks will feature information about the Fraternity's literacy initiatives as well as provide space for members and friends to create a special literacy message. Pi Phis may hand these bookmarks out at their event to increase their local community's awareness of Pi Phi's literacy efforts.

### Make Your Mark on Your Community

Chapters and alumnae organizations should organize Fraternity Day of Service events to encourage reading and improve literacy. These events provide a great opportunity for Pi Phis to collaborate and serve their communities. For example, you could hold a "One Pi Phi, Two Pi Phi, Seuss" reading celebration, during which Pi Phis go to community libraries or after-school programs to help children write and create their own books.

"Pi Phi's literacy efforts have always been focused on service," said Grand Vice President Programming JULIE CARNEY, Texas Beta. "Sometimes, however, we forget what service in its purest form looks like. It's taking the time to really make a difference in the life of someone else."

In addition, to honor Fraternity Day of Service, the Fraternity and Pi Beta Phi Foundation have partnered with First Book to grant \$100 in First Book Marketplace credits to one registered First Book recipient group of your chapter's or alumnae organization's choice. The recipient group will be able to hand-select books for the children in their after-school program or classroom. If you need assistance choosing, identifying or registering a First Book recipient group in your area, please email Collegiate Services and Literacy Initiatives Coordinator Ashley Fiene at [ashley@pibetaphi.org](mailto:ashley@pibetaphi.org).

### Make Your Mark Online

To help inspire your organization with planning during the month of January, the Fraternity will share stories of past literacy service events completed by alumnae organizations and chapters. The stories will be shared through social media, email and at [www.pibetaphi.org/fraternitydayofservice](http://www.pibetaphi.org/fraternitydayofservice). In addition to providing these stories, the Fraternity will provide downloadable resources for those planning a similar service event in their community.

Pi Phi also wants to hear all about your chapter and alumnae organization's literacy story. The Fraternity has developed a brand-new, fully-interactive Facebook page dedicated to telling Pi Phi's literacy story. The Facebook page will launch in honor of Fraternity Day of Service, but chapters and alumnae organizations will be able to share their stories online all year round. More details on this new and exciting initiative will be sent to chapters and alumnae organizations in January.

"Pi Phi has a special story to tell," Julie said. "It's the story of how a group of dedicated women have an impact on their communities through literacy service, a story which began more than 100 years ago at the Pi Beta Phi Settlement School." How will you tell your story?

# Support Read. Lead. Achieve. Through The Literacy Fund

With the launch of Read. Lead. Achieve., the Fraternity and Pi Beta Phi Foundation made an obvious decision to partner. Prior to Read. Lead. Achieve., alumnae organizations, chapters and members were asked to support Pi Beta Phi literacy initiatives by sending their dollars in multiple directions. Now, your financial support of Pi Phi literacy initiatives has one home: The Literacy Fund.

This new partnership between the Fraternity and the Foundation harnesses the combined power of thousands of Pi Phis all across North America. The partnership will support long-standing programs like Champions are Readers and our First Book partnership, and it will also allow Pi Beta Phi to support new literacy efforts in the future.

Chapters and alumnae organizations are asked to make all future literacy donations (including First Book donations) to The Literacy Fund. Fundraising guidelines will be adapted to reflect this expectation beginning January 1, 2012, for chapters, and July 1, 2012, for alumnae organizations.

Updated Pi Beta Phi Foundation Chapter Gift Forms (FT-1) can now be found on both the Foundation's website as well as in the Resource Library on the members-only side of the Pi Beta Phi website.

No more figuring out how to split your support or where to send your contribution — it's all been made simpler. Send your gift to the Foundation, and together we will see the positive impact Pi Phi can have on literacy when we're united. ↪

The *Literacy* Fund  
PI BETA PHI FOUNDATION



## ***CAR Connect to launch in January 2012, will enhance the Fraternity's Champions are Readers Program***

Grant \$200 in free books! CAR Connect is set to launch in January 2012 and will enable you to provide brand-new, free books to children in your community year-round, through the First Book Marketplace.

Register your Champions are Readers (CAR) site as a First Book recipient group, and your CAR site will automatically receive \$200 in Marketplace credits. When the site you registered shares First Book with a peer program, both your site and the peer program

receive additional credits ... that translates to free books. It's really that easy!

To register your CAR site as a First Book recipient group, please see the new CAR order form now available at [www.pibetaphi.org/CAR](http://www.pibetaphi.org/CAR).

There you can find updated CAR resources, including more information on CAR Connect. All alumnae organizations and chapters should place CAR orders using the new online form.



## Pi Beta Phi Welcomes Connecticut Gamma



Top: Connecticut Gamma charter members gathered for a group photo at the Installation Banquet on Saturday, November 5, 2011.

Bottom: From left, Connecticut Gammas RACHEL SHUTE, KALI RYAN, ANDREA REHR and NICOLE SIBERRY celebrated their new sisterhood with a Bid Day brunch.

“I am so glad to be a founding member of the Connecticut Gamma Chapter at Quinnipiac University,” said Connecticut Gamma charter member RACHEL SHUTE. “Being a part of such a large organization and having so many Pi Phis surrounding us with love and support is indescribable.”

On September 9, Pi Beta Phi welcomed 100 new members to its charter colony at Quinnipiac University during colonizing recruitment. In keeping with Pi Beta Phi’s focus on literacy service, the weekend kicked off with a literacy-themed open house. The New York Eta Chapter from New York University assisted a team of Fraternity officers with Preference Parties Saturday afternoon. The new member class was pledged on Sunday morning, and a Bid Day celebration brunch was held immediately following the pledging ceremony.

The women quickly immersed themselves into the Greek community at Quinnipiac University by participating in Greek Week, which is a week of friendly competition between the 10 Greek organizations on campus. Pi Phi wasn’t even expected to participate in Greek Week, but they took the campus by surprise and won third place in the competition. “Not only are the women of Connecticut Gamma a great addition to our Pi Phi sisterhood, they are also a great addition to an already thriving Greek community at Quinnipiac University,” said Director Extension ANA MANCEBO MILLER, Texas Beta. “These women have a deep commitment to Pi Beta Phi, and I’m excited to see they are extending that commitment to the Greek community.”

Throughout the semester, chapter members also supported the Greek community during various philanthropy events including Phi Sigma Sigma's Rock-A-Thon, Alpha Chi Omega's Frisbee Fest and Sigma Phi Epsilon's charity dinner. The women attended a hockey game with the men of Pi Kappa Phi Fraternity and went pumpkin picking with the women of Alpha Delta Pi.

"Every member of Connecticut Gamma is a leader," said Resident Leadership Development Consultant EMILY JONES, Virginia Delta. "I am confident they are going to make Pi Beta Phi proud. I feel so lucky to be part of their Pi Phi experience."

Through Emily's guidance, the colonizing members completed Pi Beta Phi's eight-week New Member Education Program. This program, which is administered through the Fraternity's values-based programming, *Leading with Values*, prepared the women for a fabulous installation weekend.

"As Connecticut Gamma's National Chapter Assistance Officer, I know having a strong Resident Leadership Development Consultant on-campus and readily available to the new members is critical," said Grand Vice President Alumnae CINDY RICE SVEC, Kansas Beta. "I am so proud of Emily's efforts and how successfully she has guided this group of women from the start."

With the help of many dedicated local alumnae volunteers, current and past Grand Council members and Collegiate and Alumnae Regional Team Officers, the installation celebration began on Friday, November 4, with a Cookie Shine for the new members, alumnae and campus friends.

"Local volunteers and the Connecticut Gamma Alumnae Advisory Committee have been vital to the success of the chapter," said Grand Vice President Membership PAULA PACE SHEPHERD, Texas Epsilon. "Their support and dedication to the chapter is overwhelming."

On Saturday morning, Grand President MARY LOY TATUM, Oklahoma Beta, initiated 101 women, including one alumna initiate, MARIA MONIELLO. "Initiation was probably the most memorable moment I've had during my time in college," said Connecticut Gamma charter member KALI RYAN. "It far exceeded my expectations. I don't think anything can compare to the flood of emotions I felt that day. It is a day that will stay with me forever."

Later that evening, more than 240 guests, including the new initiates, their families, university officials and Pi Beta Phi alumnae, attended the installation banquet. During the banquet, Grand President MARY LOY TATUM officially installed Connecticut Gamma as the 135th chapter of Pi Beta Phi. ↪

### ***"Finally Greek, Thanks to Pi Beta Phi"***

Installation weekend at Quinnipiac University was even more special because Pi Beta Phi welcomed a wonderful alumna initiate into its sisterhood, MARIA MONIELLO. Maria works in Quinnipiac University's Greek Life office as the Office Manager/Administrative Assistant. She has always been very fond of what sorority life brings to today's collegiate woman. Maria is supportive of all Greek women on and off Quinnipiac's campus, so she did not hesitate to say yes to becoming an alumna initiate. In fact, during installation weekend, Maria's Facebook status read, "Finally Greek, thanks to Pi Beta Phi."

When Pi Beta Phi initially visited the Quinnipiac University campus for its extension exploratory visit, Maria was overjoyed at the possibility of Pi Beta Phi coming to campus because her niece, New York Eta

KATHLEEN MERIANO, joined Pi Beta Phi at New York University in the fall of 2010. From the moment Pi Beta Phi was invited to colonize, Maria has ensured Pi Beta Phi was welcomed on the Quinnipiac University campus.



Alumna Initiate MARIA MONIELLO, Connecticut Gamma (right) and her niece, New York Eta KATHLEEN MERIANO (left), celebrated Maria's initiation into Pi Beta Phi during the Connecticut Gamma installation banquet.



## Welcome to Texas Alpha

As you open the front doors of the Texas Alpha Chapter house, you immediately feel the women's warm Texan hospitality and tradition. Built by renowned Texas architect John Staub, the Pi Beta Phi chapter house made its mark on the University of Texas campus in 1937.

There is no doubt the beauty of this long-lived and beloved chapter house is because of the teamwork of many Texas Alpha alumnae. In 2010, the Texas Alpha Chapter House Corporation (CHC) decided the interior of the house needed updating. Under the leadership of CHC Chairmen and Texas Alphas KELLY COX FERGUSON and KRISTIN TERHUNE SJOBERG, the CHC raised funds to redecorate the interior of the house, restoring its timeless style and original grandeur.

Alumnae and parents made online gifts to the Texas Alpha

Chapter House Beautification project. Any individual, group or pledge class who made a donation was designated as an "Angel." Plaques engraved with names and the gift dates are displayed in the chapter house.

The Texas Alpha teamwork did not stop after raising funds for the project. Interior decorators and Texas Alphas SHANNON DYER DOWELL and CATHERINE MOORE WENSKE collaborated to redesign and redecorate the house. Many of the rooms on the first floor were updated with new furniture and artwork, including the formal and informal living rooms, the library and the entry hall.

Gifts are still being accepted in order to update other areas of the Texas Alpha Chapter house. For more information, visit [www.texasalphahouseproject.tumblr.com](http://www.texasalphahouseproject.tumblr.com).

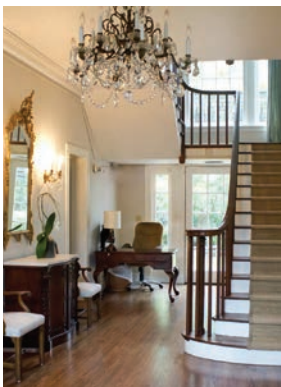
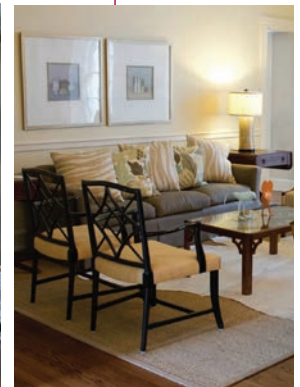
The Texas Alpha Chapter house



Blue room



Sitting room



Entryway



Meeting room for guests



Library

## *Pi Phi Housing: Myth Versus Reality*

The Fraternity Housing Corporation (FHC) assists with all Pi Phi facilities. But what exactly does FHC do to help? We're debunking myths about Pi Phi housing and answering some of the most commonly asked FHC questions.

**MYTH: "The Fraternity Housing Corporation (FHC) is a department of Pi Beta Phi and has been around since Pi Phi chapter houses were first built."**

**REALITY:** FHC was established in 2008 as a 501(c)(7) nonprofit corporation and has its own Board of Directors. While FHC works closely with the Fraternity, it is its own separate entity — just like Pi Beta Phi Foundation.

**MYTH: "All 135 Pi Beta Phi chapters have chapter houses that collegiate members live in."**

**REALITY:** Only 65 Pi Beta Phi chapters have a Chapter House Corporation (CHC) owned chapter house for members to live in. The remaining chapters live in either university-owned housing, such as houses or dormitories, or have meeting spaces, such as a suite. FHC assists with all Pi Phi facilities, regardless if the chapter has a house.

**MYTH: "FHC manages the property and employees for all Pi Phi chapter houses."**

**REALITY:** FHC directly manages and acts as the CHC for 12 Pi Phi chapters. Managing these chapters includes hiring staff, purchasing furniture and maintaining facility finances. All other chapter houses are owned and managed by individual CHCs.

**MYTH: "FHC only interacts with some CHCs, not all."**

**REALITY:** FHC assists and supports all CHCs, including more than 500 Pi Phi volunteers. FHC conducts volunteer training, provides online resources, conducts background checks for chapter employees, helps recruit CHC volunteers and approves all CHC fundraising efforts, when needed.

**MYTH: "All newly installed chapters vote to become an FHC managed chapter, instead of having their own CHC."**

**REALITY:** Following the formation of FHC in 2008, each new Pi Beta Phi chapter shall automatically be managed by FHC, according to Pi Beta Phi Constitution & Statutes.



**MYTH: "A CHC must perform a Housing Assessment once each year."**

**REALITY:** CHCs who own a chapter house are encouraged to perform a Housing Assessment every five years. The Housing Assessments identify potential property and liability issues and help CHCs plan for the future.

**MYTH: "The Fraternity collects and reviews all CHC Annual Reports."**

**REALITY:** CHC Annual Reports are collected by FHC and are due on February 1 each year. For more details, contact FHC Housing Manager Jen Fetter at [jen@pibetaphi.org](mailto:jen@pibetaphi.org).

**MYTH: "CHC programming and training only occurs at Pi Phi's biennial convention."**

**REALITY:** Beginning in Summer 2012, FHC will conduct CHC Summits to coincide with Pi Beta Phi's Alumnae Leadership Summits. They will be held this year in Atlanta, Kansas City, Missouri, and Los Angeles. These events will include helpful workshops, speakers and networking opportunities with other CHC volunteers and local alumnae. Additionally, FHC will continue to host a housing symposium at each biennial convention.



## Collegiate Spotlight

Preventing premature birth, a cornerstone of the March of Dimes® mission, is a cause close to Wisconsin Delta TAYLOR TROVILLION'S heart. Both Taylor and her sister were born prematurely — Taylor weighing in at only three pounds. Now a senior at Marquette University, Taylor chairs the March of Dimes National Youth Council and works with hundreds of volunteers to educate youth about premature birth.

Taylor was already promoting the March of Dimes mission before beginning her leadership service six years ago. Even as an elementary school child, Taylor used show-and-tell to share interesting facts about being a preemie baby.

While in high school, a family friend encouraged Taylor to join the local March of Dimes student leadership group, the San Diego County Chain Reaction Council. She eagerly joined and worked with other teenagers to fundraise for March for Babies®, formerly WalkAmerica, which supports March of Dimes programs and funds research. Taylor also served as chairman of the group during her senior year of high school.

Before leaving for college, Taylor's advisors invited her to apply for the March of Dimes National Youth Council, and she was thrilled to be accepted. The prestigious council, made up of only 19 college students, assists in the design and implementation of all March of Dimes programs targeted to young people. Applications are only reviewed for students personally invited to apply, followed by a rigorous interview process.

Taylor began her fourth year on the Youth Council this summer as the newly appointed chair of the group, a role selected by her peers. She will spend the next year traveling across the United States to plan big-ticket fundraisers, advise local March of Dimes Board of Trustees and lobby on behalf of the organization in Washington, D.C.

"It's been such an amazing experience," Taylor said. "Working with March of Dimes volunteers taught me the



Wisconsin Delta TAYLOR TROVILLION (left), chair of the March of Dimes Youth Council, and Iowa Gamma AMY WEGENER RICHARDSON (right), Director of Volunteer Leadership Development for March of Dimes, work together to educate youth about premature birth.

importance of saying 'yes' and introduced me to diverse people all over the U.S."

Being a member of Pi Beta Phi has given Taylor unique opportunities to share her passion for March of Dimes. The Wisconsin Delta Chapter hosted two events to fundraise for March of Dimes: "Bagels for Babies" and "Bowling for Babies." The Pi Phi women also share health facts with the Marquette University campus each November, which is March of Dimes' Prematurity Awareness month.

Through her work, Taylor has had chance encounters with Pi Phi alumnae who volunteer for March of Dimes, including Youth Council advisor, Iowa Gamma AMY WEGENER RICHARDSON, who is the Director of Volunteer Leadership Development for March of Dimes.

As a Youth Council advisor, Amy experiences first-hand the creative ways Taylor encourages her fellow council members. "Taylor makes the Youth Council an excellent volunteer leadership experience for her peers," Amy said. "As chair, Taylor exchanges supportive emails with the 19 collegians every day and asks council members to share 'mission stories,' personal stories about how March of Dimes touches their lives, to kickoff each conference call."

"It's such an honor as a Pi Phi alumna to see Taylor's commitment to helping others," Amy said. "She embodies the leadership, vision and drive you want in a leader — those are the ideals Pi Phi teaches you."

To help support Taylor's commitment to March of Dimes, visit [www.marchofdimes.com](http://www.marchofdimes.com).

## DISTRICT OF COLUMBIA

In October, the D.C. Alpha Chapter hosted a “Literacy Week” at The George Washington University to increase awareness of literacy-based issues in the Washington, D.C., area. The chapter partnered with Teach for America® and the Northern Virginia Alumnae Club to present seven days of literacy events, including a Teach for America panel discussion, a bake sale, a harvest festival and the third annual “Pi Beta 5K.” More than 400 students and volunteers participated throughout the week.



## FLORIDA

Being a strong member of the Greek community at Stetson University is important to the women of Florida Alpha. To show their support of several Stetson fraternity men who have served in the U.S. military or are currently in the Reserve Officer Training Corps (ROTC), the women wrote thank-you cards and letters to the troops. From left, Florida Alphas ASHLEY PRICE-DYMENT, CARLY LEES, KATI DAGGE and EMILY PERRYMAN.



## ILLINOIS

After Greek chapter houses were vandalized at Knox College, Illinois Beta-Deltas banded together with other Greek groups to show their support for the Knox Greek community. During Greek Week festivities, the chapter participated in games, purchased official T-shirts and applied for awards. The women, along with many other Greek groups, also wore their badges to class on the same day. The chapter was proud to use their positive energy to help unite the Knox College Greek community.





IOWA

Iowa Gammas paired with FarmHouse, Acacia and Phi Gamma Delta fraternities to create an original mini-musical for Iowa State University's annual campus-wide Varieties competition. The performance, entitled "Sunnyville's Shining," received the "Overall Champion of Varieties" award as well as awards for best plot, set, music and ensemble. The event has brought Iowa student groups and Greek organizations together since the 1930s.



NEW YORK

The women of New York Epsilon are always looking for ways to get more involved in Greek life on campus at Rensselaer Polytechnic Institute. A popular way to promote Greek life is by playing on intramural sports teams, like soccer and volleyball. The Pi Phis play other Greek teams, including members of Sigma Alpha Epsilon.



MISSOURI

While members of Missouri Beta love wearing their letters and showing Pi Phi pride, they also love showing pride for the Washington University Greek community. Throughout the year, Pi Phis participate in other Greek philanthropy events. This fall, the chapter's Executive Council attended Alpha Phi's Red Dress Gala to raise money for cardiac research. From left, Missouri Betas NICKY FERGUSON, ANNIE MARTIN, JEN SPIELMAN, BRITTANY KATZ, JESSICA OYNICK, BRITTANY MARCUS-BLANK, AUDREY YOUNG and MORGAN MANCALL.



OHIO

At Ohio University, members of the Ohio Alpha Chapter love being Greek because of the friendships they make. The chapter women have benefitted from networking with Pi Phi alumnae, being involved on campus with other student groups and meeting Greek and non-Greek students. From left, OLIVIA VAN DER ZEE, ALEX BITTLE, RACHELLE ROBERTS, GRACE MAXTON and TIFFANY ELUM.



## ONTARIO

Because the University of Guelph has a small number of Greek organizations, the women of Ontario Gamma work hard to promote Greek life in the local community. Each Halloween, Pi Phi's participate in a philanthropy event, "Trick-or-Eat." The students dress up and go door to door collecting non-perishable food items, which are then donated to a food bank. Pictured with the Ontario Gammas are members of Delta Upsilon and Alpha Epsilon Pi fraternities.



## VERMONT

Vermont Beta Chapter members love promoting the University of Vermont's Greek life while helping first-year students during campus move-in day. The day is filled with high spirits while the women move luggage and answer questions about sorority life. From left, Vermont Betas LEAH DELANEY, MOLLY KADISH, LINDSAY SANDERSON, SAMI SHEPPARD and AVERY MACKENZIE.



## TEXAS

Texas Etas show their campus spirit by supporting a variety of activities at Texas A&M University. Following the devastating wildfires in Texas this past summer, the Texas Eta Chapter worked with student organizations including Pi Kappa Alpha fraternity and the Student Government Association to sell maroon-colored towels to wave at Aggie football games. The proceeds, totaling more than \$25,000, were contributed to the Texas Wildfire Relief Fund. From left, KATIE HEINS, ABBY WHITE, LESLIE BERGAMO, HANNAH GENTRY, ALLI SHERRILL, SARAH STIMSON, AMANDA WEISSLER and KATIE WRIGHT.





## Kisses for the Troops

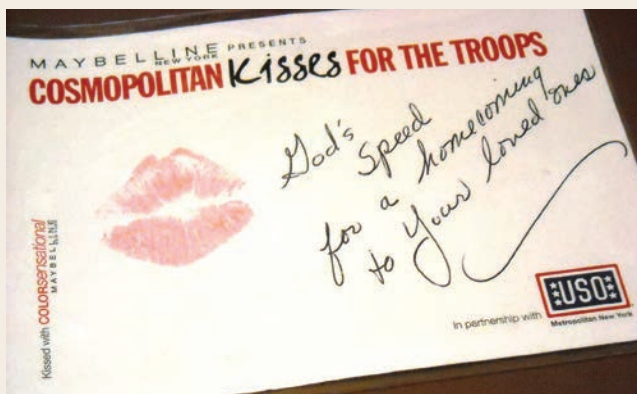
In honor of Veterans Day, 12 Pi Phi chapters partnered with *Cosmopolitan*® magazine and Maybelline New York® to collect handwritten messages of support for American troops overseas.

Pi Phi women and other university students wrote messages on postcards, then sealed each card with a lipstick kiss. For every postcard created by the Pi Phi women, *Cosmopolitan* magazine donated \$1 to the United Service Organizations (USO). The USO will send the cards to soldiers later this year in care packages.

The postcard collection is a part of the third-annual *Cosmopolitan* Kisses for the Troops campaign. *Cosmopolitan* has donated more than \$40,000 to the USO and collected tens of thousands of “kisses” for the troops in the last two years. This year, the campaign extended to sorority women.

“Our chapter had so much fun listening to music, eating yummy treats and bringing both Greek and non-Greek students together to help us with this cause,” said Ohio Iota AMY RUEHL. “We are so thankful for the chance to make a big impact. These small cards of love will mean tremendous amounts to soldiers overseas.”

The Indiana Beta Chapter at Indiana University collected the most postcards of any group this year at their Kisses for the Troops event. For their hard work, the chapter received \$1,000 from *Cosmopolitan* magazine, which will be donated to a Pi Beta Phi philanthropy. ↪



Members of Colorado Gamma at Colorado State University pose at the chapter's Kisses for the Troops event. From left, Colorado Gammas ALANA CALHOUN, KIANA YUTRZENKA, TORI DUDLEY and STEPHANIE WHITE.



Top: Texas Etas from Texas A&M University sign postcards at their Kisses for the Troops event. From left, Texas Etas KARA FLYNN, STEPHANIE METZGER, PAIGE ALLEN and NANCY MCGEE.

Middle: Pi Phis wrote messages and gave a lipstick kiss on thousands of Kisses for the Troops postcards. *Cosmopolitan* magazine donated \$1 to the USO for every signed postcard.

Bottom: Indiana Beta OLIVIA PASQUINELLI writes postcards to the troops.

# IN HER WORDS



**KAY BAILEY HUTCHISON**  
TEXAS ALPHA

## IN A NUTSHELL ... TELL US ABOUT YOU

On the weekdays, I am a United States Senator representing the state of Texas. I am currently serving my third term and am the first — and to date, only — woman elected to represent the state in the Senate.

On the weekends, I'm a mom.

## FAVORITE PI PHI MEMORY ...

*"My mom's face when I told her I pledged Pi Phi. She was a Pi Phi, too."*

ADVICE FOR UP-AND-COMING PROFESSIONAL WOMEN ▶

## GIVE US A PEEK INSIDE YOUR TYPICAL DAY

Up at 5:30 a.m. to walk two to three miles with friends, breakfast, meetings, speeches, interviews, lunch with Senate colleagues, committee hearings, receptions or dinners.

## FAVORITE WORD

Perseverance.

## WHO INSPIRES YOU?

The men and women of the U.S. Military.

## FAVORITE QUOTE

"Never give in. Never give in. Never, never, never, never — in nothing, great or small, large or petty — never give in except to convictions of honor and good sense." — Winston Churchill

## LOOKING AT ME, NO ONE WOULD EVER GUESS ...

I call Texas college sports coaches to offer advice.

## FAVORITE WORKPLACE EXPRESSION

"We can do that!"

## BEST DAY EVER

When my two children came into our world.

Left Brained  Right Brained

Heels  Flats

iPhone  Blackberry

a.m. coffee  a.m. soda

Hours a week 40+  50+  60+

**BE PREPARED BEFORE YOU SPEAK.**



# Get **Linked in** to Pi Phi

Looking to network with Pi Phi alumnae? Want to find volunteer opportunities with your local collegiate chapter? It's easy to connect to Pi Beta Phi via your LinkedIn profile.

LinkedIn is an online professional social networking site connecting you to colleagues, businesses and even potential employers. Most importantly, LinkedIn connects you to Pi Beta Phi and your Pi Phi sisters. Your LinkedIn profile acts like an online resume detailing your work history, business skills and interests.

"Social media sites are all the rage, but LinkedIn has the most professionalism and esteem," said Illinois Theta NICHOLE SCHAU SANTORO, client services manager for Desert Rose Design marketing firm. "You don't talk about your kids or where you went to lunch on LinkedIn."

More than 135 million people use LinkedIn to network. As a member of Pi Beta Phi, you can join a LinkedIn network that already exists: your Pi Phi sisters. Collegians, alumnae and Fraternity officers network with one another on the website, including posting jobs, volunteer positions and events.

With a complete profile, meaning you have added comprehensive professional information, a user is 40 times more likely to receive opportunities through LinkedIn. What makes your profile complete? Follow these seven steps to connect to the Fraternity and Pi Phi in your area.

1

## Work History

Enter your past positions, dates worked and describe your duties and major projects you completed. This is a great area to include any Pi Phi volunteer positions. Did you serve on your chapter's Executive Council while in college? Did you mentor collegians as an Alumnae Advisory Committee (AAC) member? Did you help plan a fundraiser for your alumnae organization? If you're not sure what to write, check out the officer descriptions in the Resource Library on the members-only side of the Pi Beta Phi website.

2

## Education

Include high school, college and any undergraduate or graduate school completed. Always include the degree received and any special areas of study. You can also enter certificate programs, for example, a certified public accountant certificate, a teaching certificate or even computer training classes and leadership or management training.

3

## Summary — About Me

The summary is the about me section of the profile. It should be approximately a paragraph summing up what you do and explaining you are on LinkedIn to network. For example, it can include if you are a recent graduate, if you are searching for career advancement or if you're an individual with 15 years of experience looking to spend extra time volunteering. "People want to get a sense of what you're doing, not become your new best friend," Nichole said. "Keep it short and sweet."

4

### Photo

Adding your photo personalizes your profile and helps someone connect to you. Photos should be close-up of your face and not include other individuals. Your photo does not have to be a professional headshot, but should be appropriate for work: save your glamour shots for other social media outlets. "If someone met you at a networking event, you want them to instantly remember you from your photo," Nichole said.



5

### Specialties — Skills

Your LinkedIn specialties are your business skills. Are you a photographer and often work with Adobe Photoshop®? Are you a writer with strong editing skills? Are you a great leader in team projects? When entering your specialties, LinkedIn automatically recognizes key words and commonly used phrases. Other users can easily find your profile by searching LinkedIn with these key words. For example, an AAC Chairman searching for an alumna to serve as a Vice President of Finance counterpart may search for accounting skills or finance skills.

6

### Recommendations (at least 3)

Past colleagues, fellow volunteers or friends can write recommendations to highlight your experience and skills. "It speaks volumes when other people say great things about you," Nichole said. If you are already connected to a colleague or Pi Phi sister on LinkedIn, you can request a recommendation in one click via the site. And, once someone has written a recommendation for you, you can reciprocate and write something nice about them.



7

### Groups and Associations

Many businesses and organizations have LinkedIn groups. After joining a group, that business or organization appears on your profile so that others can see your interests. Also, you can post links or discussions to your group. For example, all Pi Phis can join the "Pi Beta Phi Fraternity" group to share news about volunteer opportunities, job openings or meeting alumnae in a new city. You can also join your university or college group or other professional organizations specific to your career field. "LinkedIn groups are the place to ask for help or celebrate success," Nichole said.





## Pi Phis Support a Sister in Need

Kentucky Alpha MAGGIE ISING found strength and support from her Pi Phi sisters after both her parents passed away.

“Pi Phi has been a positive influence and kept me going through difficult times,” Maggie said. “I love these women and this Fraternity more than words can describe.”

During Maggie’s graduation week from high school, her father passed away from cancer. A week later, her mother was diagnosed with cancer. “I knew I couldn’t get myself through college without a support system,” she said. “During recruitment, I fell in love with Pi Phi. My aunt and cousin are Pi Phis, and I knew it was the place for me.”

While living at home with her mother, the Kentucky Alpha Chapter gave Maggie a support system and strong connection to campus life. Maggie bonded with her Pi Phi sisters during chapter events, especially recruitment activities. “Recruitment week was incredibly memorable,” she said. “I spent hours on end with my sisters. I truly value the times I have spent with them.”

Maggie recalls how her sisters rallied around her when her mother passed away in February, and how grateful she was for their love and support. Many of the Pi Phi women coordinated their class schedule so Maggie did not have to attend her mother’s funeral alone. “I felt a real sense of love through Pi Phi when my mom passed away,” Maggie said. “When the girls stopped what they were doing to be there for me, including an alumna I had never met, I was in awe.”

With a Pi Beta Phi Foundation Friendship Fund scholarship, Maggie will continue her education at the University of Louisville without financial worry. She is also happy to continue participating in recruitment and chapter events with her Pi Phi sisters. Gifts given to the Foundation’s Friendship Fund provide support for members like Maggie and also fund other educational, leadership and philanthropic initiatives.

“Knowing I am not alone in this difficult period in my life is so amazing,” Maggie said. “Being a member of Pi Beta Phi has given me the support and everlasting friendships I need and truly cherish.”



Kentucky Alpha MAGGIE ISING (right) received incredible support from her Pi Phi sisters, including Maggie’s big sis COURTNEY FLETCHER (left), after both her parents passed away. Pi Beta Phi Foundation awarded Maggie a Friendship Fund scholarship to help with tuition and academic expenses.

# The Foundation has Gone Social and Mobile

Pi Beta Phi Foundation is pleased to announce our new Facebook page and new mobile Application for your smartphone. Connect with the Foundation on Facebook or via the App to share stories and to stay informed about Foundation news.

## Have you “liked” the Foundation’s Facebook page?

We invite you to “like” our Facebook page to share stories, fundraising events, photos and questions — or even to say a simple hello. Our goal is to create a dialogue with our exceptional donors and friends. By listening to you, we can build a stronger Pi Beta Phi Foundation and ensure a strong future for Pi Beta Phi.

The Foundation will also continue to post news on the Fraternity’s Facebook page to reach the larger member audience about scholarships, Emma Harper Turner Fund grants and our support of Fraternity literacy initiatives, including Read.Lead.Achieve. events and programming.

As we grow on Facebook, we are increasing our support of the Fraternity and all members of Pi Beta Phi. And, as we expand our presence through other social networks, we are continuing to develop and enhance your Pi Beta Phi Foundation experience.

We look forward to connecting with you online!

Scan this QR code with your smartphone to download Pi Beta Phi Foundation’s mobile App or visit [www.mycrubsheet.com/pibetaphi](http://www.mycrubsheet.com/pibetaphi).



Share your stories, fundraising events and photos on the Foundation’s new Facebook page. Visit [www.facebook.com/pibetaphifoundation](http://www.facebook.com/pibetaphifoundation).

## Pi Beta Phi Foundation in the Palm of Your Hand with our Mobile App

Our new mobile App was created for recent graduates and young alumnae. The App features fun “life tips” on everything from engagement rings to retirement and car insurance.

The news tab features Facebook posts and Twitter feeds from the Fraternity and Pi Beta Phi Foundation. It also includes posts from Pi Phi chapters, alumnae organizations and Pi Phi partners. ↪



## Friends and Leaders for Life

By: ORIANA BERTUCCI, Ontario Gamma

When I first heard the phrase “Friends and Leaders for Life” as a senior at the University of Guelph in Ontario, Canada, I knew some of my collegiate sisters would be lifelong friends, but I did not fully understand the scope of lifelong leadership.

Following graduation, I, along with seven other women, had the privilege of serving the Fraternity as a Leadership Development Consultant (LDC). As we embarked on a new chapter of service and leadership for the Fraternity, we met countless alumnae volunteers who gave selflessly of their time, their talents and their treasures.

Whether it was an Alumnae Advisory Committee (AAC) member giving up her weekend to help a chapter prepare for recruitment, a Chapter House Corporation member finding the perfect arrow shaped door handles for the chapter house or an alumnae organization’s annual Christmas bazaar, Pi Phi women were giving of themselves in every corner of the continent! These Fraternity volunteers not only gave their time to Pi Beta Phi, but they also were outstanding leaders in their communities and professional fields.

When our year as LDCs came to an end, we had seen first-hand the impact Pi Phis could have on a community. We made a commitment to each other to always remain friends and leaders for life: a message we have taken to heart and lived each day.

Serving our Fraternity comes in many shapes and sizes. Following my year as an LDC, I worked at Pi Phi Headquarters and served on the Executive Council for the St. Louis Alumnae Club. Currently, I live in Canada and serve as a member of Ontario Beta’s AAC. I also serve as Pi Beta Phi’s National Panhellenic Council Third Alternate Delegate, as Panhellenic Delegate for the Toronto Alumnae Club and as Pi Beta Phi Foundation’s Alumnae Continuing Education (ACE) Scholarship Committee Chairman.



After serving as a Leadership Development Consultant, Ontario Gamma ORIANA BERTUCCI (left) made a commitment to be a friend and leader for life — a message she lives every day as a Pi Phi volunteer. From left, Oriana is pictured with Nebraska Gamma MARGIE BORGES.

(The ACE committee awarded more than \$229,000 in scholarships last year).

In the “History of Pi Beta Phi” (1915) it states, “If a sister imagines that upon graduation, she has discharged the last duty she owes to Pi Beta Phi and her sisters, she has failed to understand the true meaning of friendship and fraternity. The promises we made were not for a day nor a year, but for all time, and we are just as much Pi Phis today as we were when we were collegians. Our work is different; we served an apprenticeship, now we have in life’s great work to live the principles we have sworn to uphold and defend.”

My commitment to our Fraternity is rooted in the belief that our arrow badge calls us to always aim higher. The leadership skills and life experience I have gained through Pi Phi have been instrumental in my professional success (parliamentary procedure actually comes in handy), but more importantly it has been the Pi Phis who modeled the way who have inspired me to constantly aim higher. Whether it was through their participation on a mission trip in Africa, their organization of a city-wide event raising \$30,000 for literacy or the quiet way their actions spoke louder than their words, the servant leader heart of our members is what keeps me committed to the mission and vision of our 12 founders.

## *Pi Phi Wants You!*

In 1867, 12 young women modeled the way for sisterhood, friendship and leadership. You can help model the way today by serving as a Pi Beta Phi volunteer.

### **Alumnae Advisory Committees**

Alumnae Advisory Committee (AAC) members work as a team with chapters to guide, support and advise on matters from programming to membership to recruitment. Your personal and professional experiences can help make a difference in a collegian's life and help build strong chapters. As a mentor, you will have opportunities to share your knowledge with collegians and other chapter advisors.

Previous experience on your chapter's Executive Council is not required to hold an AAC role. AAC members work as a committee, so it is important to have members with many different leadership qualities and skills. Some of the valuable traits sought in volunteers come from training or experience outside of Pi Beta Phi. The Fraternity also creates online tools and resources to ensure volunteers have the training and information they need to be successful advisors.


Pi Phi volunteers develop relationships with other volunteers while working toward a common purpose. Many women also reconnect with sisters at regional workshops, leadership academies and conventions.

### **Chapter House Corporations**

Chapter House Corporation (CHC) members oversee the maintenance of a chapter house and handle financial and legal matters with respect to the property, including hiring of housing staff. CHC members ensure the safety and well-being of Pi Phi collegians by maintaining housing facilities. Additionally, many Pi Phis say their fondest memories are from living in a chapter house.

Training is provided, though alumnae with skills in the areas of property management, employee relations, real estate and/or finance are excellent additions to any CHC.

The Fraternity Housing Corporation (FHC) assists CHC members through webinars, workshops and meetings, including housing symposiums held at each convention. CHC members build rewarding relationships with other volunteers and gain experience applicable to other community and professional roles.

For more information about Pi Phi volunteer opportunities, email [volunteer@pibetaphi.org](mailto:volunteer@pibetaphi.org) or visit [www.pibetaphi.org/volunteernow](http://www.pibetaphi.org/volunteernow). 



The Fraternity is proud to announce the release of a new video about Pi Beta Phi volunteers. Watch testimonials from volunteer officers and learn how you can give back to Pi Beta Phi.

Visit the Fraternity's YouTube channel at [www.youtube.com/pibetaphihq](http://www.youtube.com/pibetaphihq).





## Advancing Sorority Together: The 2011 NPC Annual Meeting

By: Jennifer M. Siler, Alpha Delta Pi



Pi Beta Phi representatives at the 2011 National Panhellenic Conference Annual Meeting in Austin, Texas. From back left, NPC Second Alternate Delegate ASHLEY DYE, Illinois Zeta; *The Arrow* Editor CONSTANCE DILLON, California Delta; NPC First Alternate Delegate ANA MANCEBO MILLER, Texas Beta; Executive Director JULI HOLMES WILLEMANN, Iowa Beta; and NPC Third Alternate Delegate ORIANA BERTUCCI, Ontario Gamma. From front left, Grand President MARY LOY TATUM, Oklahoma Beta; NPC Delegate LINDA NOEL IBSEN, Colorado Beta; and past NPC Delegate CAROL INGE WARREN, North Carolina Beta.

“Advancing Sorority Together” was the theme of the 2011 National Panhellenic Conference (NPC) Annual Meeting October 14–16, in Austin, Texas. Delegates, Executive Directors, Inter/national Presidents and Editors from the 26 member organizations gathered for the three-day event to discuss the business of the Conference, learn from guest speakers and plan for the future.

“The Conference is doing very well in our vision, mission and value statements and in our organizational effectiveness,” said outgoing NPC Chairman Eve Riley, Delta Delta Delta. She explained sorority women are telling their stories effectively, which is measured by the increased number of collegiate women participating in formal recruitment — a figure that is up by 8 percent this year over last year. NPC organizations are also doing a better job of retaining their members.

Important accomplishments during the meeting include review of the NPC bylaws, review of the Unanimous Agreements and a report on the results of the Measurable Outcomes Committee.

Friday evening, Dr. Lori S. White, Sigma Kappa and Vice President for Student Affairs at Southern Methodist University, discussed the future of higher education in the 21st century and the impact of NPC. Reports in higher education project growth primarily in the number of Hispanic, African American, Asian and international students and less growth among Caucasian students.

“Students will be more diverse with different aspirations and expectations,” Lori said. “It will be important to ensure Greek life is a value-added experience by offering a greater focus and positive impact on a person’s career goals.”

Saturday morning featured a town hall meeting with presentations by Kyle Niederpruem, Kappa Delta; Erin Nemenoff, Theta Phi Alpha; and Anne Emmerth, Chi Omega. Niederpruem, owner of Kyle Communications, a public relations and social media strategy firm in Indianapolis, addressed branding. “A brand is a promise to your audience, constituents, customers or members,” Kyle said. “It is who you are and what you hope to deliver to the world.”

Erin Nemenoff, Chairman of the Measurable Outcomes Committee, reported on the 2010–2011 NPC survey compiled by that committee. Survey results show organizational, operational and programming information for all 26 member groups.

Highlights include:

- 26 NPC member groups reported a total of 4,292,824 initiated women.
- 26 NPC member groups reported 3,031 collegiate chapters.
- NPC member groups’ national philanthropic activities raised \$16,659,749.

Nicki Meneley, Alpha Chi Omega and NPC Executive Director, showcased the Recruitment PREP toolkit, which will prepare women for the recruitment process.



international badge day

Celebrate International Badge Day on Monday, March 5! Wear your badge or Pi Beta Phi letters to show your love for Pi Phi and the Greek community.

The website offers campus-specific information and creates a personalized handbook for the potential new member. Recruitment PREP will launch in spring 2012.

Saturday's Alumnae Awards Luncheon featured guest speaker Jan Langbein, Chi Omega, Executive Director of Genesis Women's Shelter in Dallas. She encouraged everyone to make the world a better place. "Sorority is the idea of excellence for women," Jan said. "We should never think we are immune to domestic violence, alcoholism and abuse. We need to make a difference to guarantee the excellence of women is never tarnished or given away."

During Saturday's closing banquet, Pete Smithhisler, President and CEO of the North-American Interfraternity Conference, received the Executive Committee Interfraternal Service Award. Lissa Bradford, Kappa Alpha Theta, received the Executive Committee Distinguished Service Award.

At the conclusion of the meeting, a new Executive Committee was installed for the 2011–2013 biennium:

**Chairman:** Jane Sutton, Alpha Xi Delta

**Vice chairman:** Jean Mrasek, Chi Omega

**Alumnae Panhellenics Committee chairman:**  
Mary Jane Beach, Kappa Alpha Theta

**Budget and Finance Committee chairman:**  
Josette Kaufman, Phi Sigma Sigma

**College Panhellenics Committee chairman:**  
Julie Johnson, Kappa Delta

"We can reflect on the past, but we must realize the world is moving faster than ever," said incoming NPC Chairman Jane Sutton, Alpha Xi Delta. "We must adapt to changing times, but hold fast to the principles that have gotten us this far. When it comes down to it, look to the sister on your left and right and ask how they will strengthen your potential." ↪

### ***Past NPC Delegate Carol Inge Warren Honored by NPC Groups***

At the close of the 2011 National Panhellenic Conference Annual Meeting, CAROL INGE WARREN, North Carolina Beta, retired from serving as Pi Beta Phi's NPC Delegate.

In honor of Carol's 14 years of service to the Conference, Pi Beta Phi presented a \$10,000 donation to NPC. The donation was made to further the work of the Long Range Planning Committee, which ensures the Conference remains a vital force in the Greek community. Carol's true passion and commitment to NPC was shown in her work on this committee.

Additionally, both Alpha Xi Delta and Kappa Delta honored Carol at the meeting for her service to the Greek community. Given only twice before, Carol was awarded Alpha Xi Delta's Mary Burt Nash Distinguished Service Award. The award is given to an individual from another NPC group who has served all groups through NPC. Carol also received Kappa Delta's Order of the Diamond Award, which is given to individuals who have made extraordinary contributions to the women's fraternal movement.

"Carol is known by all as a loyal friend, a determined

believer in values and ethics and a gentle and wise woman," said Julie Johnson, NPC Delegate for Kappa Delta. "When Carol talked, people listened and valued her opinion — whether they agreed with her or not. She has inspired many through the years with her wisdom, leadership and candor."



Past NPC Delegate CAROL INGE WARREN, North Carolina Beta (left), was the recipient of the Kappa Delta Order of the Diamond Award at the 2011 NPC Annual Meeting. Julie Johnson, NPC Delegate for Kappa Delta (right), presented the award. Carol also received Alpha Xi Delta's Mary Burt Nash Distinguished Service Award in honor of her 14 years of service to NPC.



## Alumnae Spotlight

California Theta **DANIELLE MCLAUGHLIN** is a world champion triathlete. She finishes a half-mile swim, 14-mile bike ride and 5K run in just one hour and 35 minutes. But what makes this 25-year-old athlete unique is that she races with a prosthetic leg because her foot was amputated to save her life.

Danielle grew up playing soccer but remembers always having a strange pain in her left foot. “I went to doctor after doctor, but they thought it was just growing pains,” Danielle said.

By coincidence, Danielle accompanied her parents to the hospital after her sister broke her leg. The orthopedist noticed Danielle’s unusual limp, conducted an MRI and discovered a spot. Danielle was only 16 years old when she was diagnosed with Synovial Sarcoma, a rare form of soft-tissue cancer.

After rounds of radiation, Danielle was declared cancer-free, but the tumor aggressively returned only six months later. Doctors decided to amputate her left foot. “I thought, there goes my life,” she said. “I didn’t want to be different.” Determined to attend her first day of senior classes, she went to school on crutches — less than three weeks after surgery.

When Danielle arrived at the University of California, Davis, she attended Panhellenic recruitment and fell in love with Pi Phi. “Preference Night was the second time I had worn a dress other than prom,” Danielle said. “I was worried about people judging me, but none of the Pi Phis questioned me about my leg because they knew it was my story to tell.”

After college graduation, Danielle started taking indoor



California Theta **DANIELLE MCLAUGHLIN** (center) lost her foot to cancer, but the Pi Phi women at the University of California, Davis, never made her feel different.



California Theta **DANIELLE MCLAUGHLIN** placed first in her category at the 2011 Paratriathlon World Championships in Beijing, China.

cycling classes. “It was the first time my prosthetic leg wasn’t hindering me from being active,” she said. Danielle’s New Year’s Eve resolution that year was to finish a triathlon. Four months later, she completed her first race — and was hooked.

She started training to improve her race time and applied to the Challenged Athletes Foundation for a running prosthetic grant. A running prosthetic costs more than \$10,000 and is not covered by health insurance. “When my grant was approved, I started hysterically crying,” Danielle said. “I knew 100 percent it was a turning point in my life.”

In August, Danielle traveled to New York City to compete in the USA Paratriathlon National Championship. She placed first in her category and qualified for the Paratriathlon World Championships in Beijing, China. One month later, Danielle raced with 72 athletes from 18 different countries on courses built for the 2008 Olympic Games. Once again, she placed first in her category and received a gold medal.

Danielle’s Pi Phi sisters are a source of encouragement during her training. Whether cheering at a finish line or sending daily messages of support, Danielle said the women help her get through the hard days. Many were instrumental in raising funds allowing Danielle to travel to China.

This year, Danielle spoke publically for the first time about her cancer survivorship to an audience of University of Southern California medical students. The experience helped her decide to pursue a career promoting pediatric cancer survivorship and also her newfound passion for the challenged athletes community. She also plans to continue racing.

## ARIZONA

In September, the Phoenix Alumnae Club hosted their annual membership brunch. At the event, the club was presented with a certificate of appreciation from Habitat for Humanity®. The club worked with the Arizona Gamma Chapter at Northern Arizona University to gather books and bookcases for each of the 40 homes built last year. From left, Ohio Zeta KIM O'BRIEN, Washington Gamma SUZI MORRIS KUENSTER, Texas Gamma KYLEIGH MERRITT, Karen Cordy, Chief Development Officer for Central Arizona Habitat for Humanity and Nebraska Beta KAREN SULLEY THORN.



## CALIFORNIA

In honor of the San Jose, California, Alumnae Club's 80th anniversary, members gathered for a birthday celebration. The women reacquainted themselves with new and familiar faces, ate birthday cake, played Pi Phi trivia and shared heartfelt sentiments with each other during a club tradition, the passing of the halo basket.



## CALIFORNIA

Five Piedmont, California, next-door neighbors learned they are all Pi Phis. The women learned of their Pi Phi connection by chance. From left, Colorado Alpha ELIZABETH ANDREW DIGAETANO, California Beta SHARON WELLS BANKER, California Beta JANE MILLS LEE, California Beta PAULA ROBERTS HESS and California Theta DANA HESS LOW.



## COLORADO

Members of the Aurora, Colorado, Alumnae Club delivered food, books and toys to the Aurora Ronald McDonald House®. The club will host additional events this year to benefit the Aurora Ronald McDonald House, including a birthday party for Dr. Seuss® on March 2, which is Pi Beta Phi's Fraternity Day of Service. From left, Colorado Alpha BARBARA BROWN NOEL, Texas Delta SUSAN LANDRETH FRY, Indiana Epsilons CAROLYN SCHRANK MUGGE and MOLLY MUGGE-COZZA and Illinois Zeta PAULETTE NOFFKE BRUNDAGE.





## ILLINOIS

The Chicago-Windy City Alumnae Club hosted a kick-off meeting for the 2011–2012 year. During the event, the club's executive board wore wine-colored Windy City T-shirts. From left, Iowa Zeta AMY HEMMINGSEN, Indiana Gamma JACKIE JASEK, Illinois Epsilon KATIE BRAUN, Indiana Theta TONYA ROMIN, Michigan Beta DANIELLE GANTOS and Illinois Epsilon JENNY FUKUMOTO.



## ILLINOIS

In October, four Indiana Epsilons completed the 2011 Bank of America® Chicago Marathon. The Pi Phi women trained together and supported each other through injuries and soreness. From left, Indiana Epsilons AMY KOSTRZEWA BRACKEN, CHRISTI SOULE THOMPSON, SARAH SMITH MOORE and MEGGIE HUELS DIALS.



## INDIANA

Members of the Indianapolis Alumnae Club and Bloomington-Normal, Illinois, Alumnae Club attended an afternoon luncheon at the L.S. Ayres Tea Room, located in the Indiana State Museum. The women enjoyed recipes from the historical menu and received dark chocolate peppermint angels made by a local chocolatier.



## INDIANA

This fall, several Pi Phis — and former Purdue University cheerleaders — attended Purdue’s homecoming game and cheered on the Boilermakers from the football field. The women enjoyed celebrating their Pi Phi spirit and hearing stories from Indiana Delta DEE CARBONARGI HAPE, who pledged Pi Phi and cheered on the Boilermakers during World War II. From left, Indiana Deltas RITA CRAIN KLEINSCHMIDT, CINDY FREYN LONG, DEE CABONARGI HAPE, VICKIE PRIEST SHAFER, ANNIE BAKER WELLS and CHERIE ALTHERR PLANALP.



## KANSAS

In October, the Kansas City, Missouri-Shawnee Mission, Kansas, Alumnae Club held a special initiation ceremony on the Kansas State University campus for its first alumna initiate, Kansas Beta MARION WELTSCH. Marion’s two daughters, granddaughter and grandson’s fiancée, all Pi Phis, attended the initiation ceremony. From back left, Kansas Betas SUZIE WELTSCH CORDES and JUDY WELTSCH KLOTE. From front left, Kansas Betas SARAH TEEFEY, MARION WELTSCH and DIANA KLOTE.





## OHIO

The Cleveland East, Ohio, and Cleveland West, Ohio, Alumnae Clubs hosted local author Paula McLain at a joint book club gathering. Paula spoke about her book, “The Paris Wife,” based on Ernest Hemingway’s first wife. From left, Illinois Zeta MARY JO FLORIO GARRISON, Virginia Theta AMANDA MCCONNELL PENITZ, Paula McLain and Ohio Beta DEANNA SMITH VOSMIK.



## OREGON

Pi Phis from the Portland, Oregon, area participated in the 22nd annual Portland to Coast Relay Walk to raise money for the American Cancer Society®. Pictured are members of the Pi Phi “Sole Sister” team at the finish line. From left, Oregon Beta LAURA KEEFER GERTZ, California Nus LAUREN CARRIER and MAREN JONES, Oregon Beta THERESA RICTOR BEISSE, Oregon Alpha CLARISSA BENFIELD and Oregon Beta MELISSA CORNISH STRICKLAND.



## TURKEY

In October, Pi Beta Phi’s partner, Jade Travel, sponsored an Arrow Adventures tour to Turkey. The group toured the country’s Mediterranean coast and visited cities dating back to 9,000 B.C., including a stop in Istanbul. Jade Travel is owned and operated by Kansas Alpha JANET DUNCAN NELSON. Arrow Adventures was created to offer Pi Phis, their friends and families the opportunity to take guided tours across the world with a Pi Phi tour guide. The group is pictured in front of the library at the ruins of Ephesus.



PENNY NAUGHTON BEAUMONT

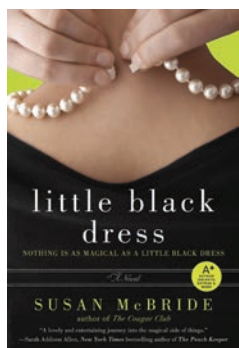
## IMPERIAL DIVAS

“Imperial Divas: The Vicereines of India” tells the story of 19 aristocratic British women who accompanied their husbands to India and sat atop the social ladder of imperial power. While abroad from 1857–1947, the women attempted to improve medical care, especially prenatal care, and increase literacy among local women and children. The book has been published in the United States, United Kingdom and India. Author PENNY NAUGHTON BEAUMONT, New Mexico Alpha, was the first Vice Chancellor of the Texas A&M University system and current President of the Board of Directors for The Foundation for Women.



## LITTLE BLACK DRESS

SUSAN MCBRIDE

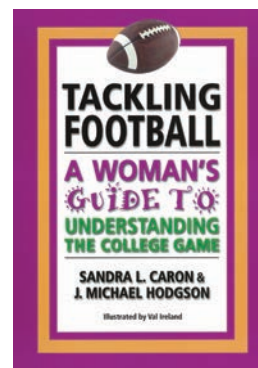


“Little Black Dress,” the newest novel by Kansas Alpha SUSAN MCBRIDE, weaves together the lives of three women as they search for love and struggle against fate. After discovering a little black dress in her family’s attic, Antonia Ashton learns wearing the dress allows a glimpse into her future. Through the dress, Antonia also reconnects with her mother and discovers her long-lost aunt, a reckless woman who disappeared 50 years ago on the eve of her wedding. Susan is also the author of “The Cougar Club” and the “Debutante Dropout Mystery Series.”

SANDY L. CARON

## TACKLING FOOTBALL

Maine Alpha and University of Maine professor of family relations SANDY CARON recently published her first book, “Tackling Football: A Woman’s Guide to Understanding the College Game.” The easy-to-read guide explains the field, players and common penalties. It also includes an extensive dictionary of football terminology. Readers can even purchase a special edition spiral-bound book with laminated pages to use in inclement weather during games. The guide is co-authored by former University of Maine tight end and placekicker J. Michael Hodgson, who recently retired from a 30-year college coaching career.

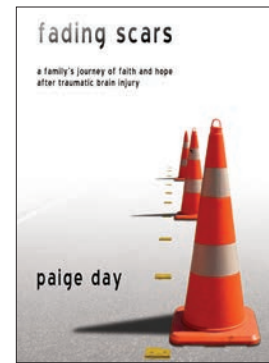




PAIGE DEIHL DAY

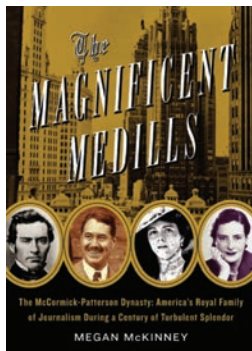
**FADING SCARS**

“Fading Scars” is the true story of one family’s journey through traumatic brain injury. Arizona Alpha PAIGE DEIHL DAY and her husband Mark, both previously divorced, brought their two families together when they married. After a tragic motorcycle accident places Mark in the ICU — and their family in turmoil — Paige recounts learning her husband’s prognosis and the support she received from her friends and family. In addition to being an author, wife and mother, Paige is Assistant Fire Chief with the Missouri City Fire and Rescue Services in Missouri City, Texas.



**THE MAGNIFICENT MEDILLS**

MEGAN MCKINNEY



Missouri Alpha MEGAN MCKINNEY chronicles the 100-year Medill family media dynasty, which headed The Chicago Tribune, The New York Daily News, The Washington Times-Herald and Newsday, in her new book, “The Magnificent Medills: The McCormick-Patterson Dynasty: America’s Royal Family of Journalism During a Century of Turbulent Splendor.” The book narrates the unparalleled influence of the family in the American newspaper industry, beginning with patriarch Joseph Medill in 1855 through the untimely death of his granddaughter Alicia Patterson in 1963. It also includes the family’s personal battles against alcoholism, drug abuse and mental illness.

SANDRA DALLAS

**THE BRIDE’S HOUSE**

Inspired by an actual Victorian house she renovated, Colorado Beta SANDRA DALLAS has written her tenth novel, “The Bride’s House,” about the secrets and passions of three generations of women who lived in the same elegant Victorian home. Though the women span different generations, they all have one thing in common: a tenacity of heart. Set amidst the boom and eventual downfall of a Colorado mining town, “The Bride’s House” is a story of the strength and courage of women who believe in their dreams.



# Remember

By: FRAN DESIMONE BECQUE, New York Alpha  
Fraternity Archivist and Historian

## The Pierce-Arrow Car

Pierce-Arrows were luxury cars manufactured between 1901–1938. Many politicians, businessmen and actors owned the glamorous car. Because of their popularity and prestige, Pierce-Arrows became part of a beloved Pi Phi song.

California Beta PORTIA HUME BELL was a student at the University of California, Berkeley, in the late 1910s. Her well-to-do father did not drive and hired chauffeurs, but he told Portia he would buy her any car she wanted if she would take a year-long course in automotive engineering. Portia complied and chose a Pierce-Arrow open touring car. She took her California Beta sisters on outings in it — imagine those Pi Phis in a Pierce-Arrow!

The first known mention of a Pierce-Arrow in a song was Pennsylvania Beta's "I Met a Man So Charming" in a songbook for the 1918 Charlevoix Convention. It was sung to the tune of "Wearing o' the Green," a traditional 1800s Irish street ballad.

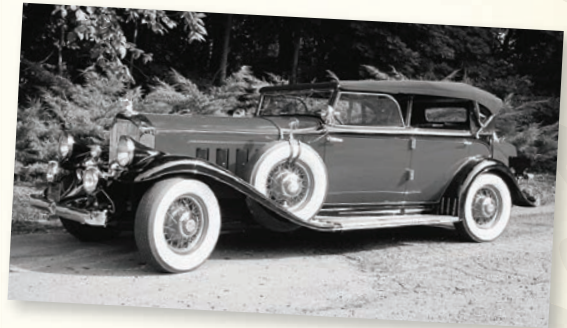
The song became a stalwart in Pi Beta Phi songbooks, although its title alternated between "Pierce-Arrow Car" and "Arrow Man." In 1921, the words were:

*I met a man so charming as all Pi Phi men are;  
And he was out a-riding in a big Pierce-Arrow car;  
He wore an Arrow collar, and he wore an Arrow shirt,  
And if he'd been a lady he'd have worn a narrow skirt.*

*Now one day this man so charming went riding out so far;  
Of course he was out riding in his big Pierce-Arrow car;  
And while he was out riding there came an awful rain;  
Says he, "I'm glad I always have my arrow and my chain."*

*Now, Pi Phi men so charming, take heed where're you are,  
Whene'er you go out riding in your big Pierce-Arrow car;  
Be sure to seek the arrow which always points "Detour,"  
Until you reach the Pi Phi house and find your true amour.*

Ohio Delta JUDITH DAVIS WHITACRE recalled her chapter of initiation, Ohio Zeta, used the song during recruitment in the 1950s. When Judith transferred schools, she taught the song to Ohio Delta. She described hand motions which accompany the lyrics as they appear in the 1955 Song Supplement:



*I met a man so handsome as all Pi Phi men are.  
He calls for me each evening in his big Pierce-Arrow Car.  
(hands like on a steering wheel)*

*He wears an Arrow collar, (pull on collar) he wears an Arrow  
shirt. (pull at shirt)  
And if he'd been a Pi Phi, he'd have worn an Arrow skirt.  
(pull at skirt)*

*One day we went a riding, and it began to rain,  
(hands dribbling rain)  
Said he, "I'm glad I brought along my arrow and my chain."  
(point to badge)*

*Now let me tell you something of a very famous boy;  
The hero of his country and his nation's pride and joy.  
When "Lindy" made his solo flight of everlasting fame,  
It's really not surprising that he used an arrow plane.*

*Now you've heard of Casanova, Don Juan and Antony,  
But the lover of the century was the Sheik of Arrow-by.  
(hands held together over head and moving side to side)*

*So if you want to have a friend to last you 'til you die,  
Just take the arrow and the chain of our Pi Beta Phi.*

Though Pierce-Arrow cars are no longer commercially manufactured, sold or driven, they live on in the memories of generations of Pi Phis. ↷



# Reunions & Anniversaries

## INDIANA

In July, the Indiana Delta pledge class of 1978 traveled to Chicago for a fun-filled weekend of friendship. The women went shopping, visited city landmarks and held a Cookie Shine. Pictured with the Indiana Deltas is Craig Mundell, who worked at the Indiana Delta Chapter house while the women attended Purdue University.



## KENTUCKY

Kentucky Betas from 1983–1985 pledge classes gathered in July for a reunion in Louisville, Kentucky. The women stayed at the home of ROBERTA CHEATHAM ETHINGTON. Pi Phis traveled from Texas, Tennessee, Ohio and Kentucky to share in a weekend of memories.



## KANSAS

Members of the Kansas Beta pledge class of 1997 gathered for a 10-year reunion during Kansas University's homecoming weekend. The Pi Phis had a wonderful time seeing the chapter house and spending time with House Director Sunny Walsh. From left, JENNIFER WILLIAMS ECKERT, HEATHER PRICE NANA, ALLISON BAILIFF DANIELSON, ROBIN REAMES BOND, KATIE RODGERS MCCUNE, SHELLY BAKER MALONEY, ASHLEY MAURIN and CARRIE WOOTEN MCLINEY.



## LOUISIANA

In October, the Louisiana Beta Chapter celebrated its 75th anniversary on the Louisiana State University campus. Louisiana Beta RAYE PIERCE NELSON, a charter member of the chapter, shared her fond memories of Pi Beta Phi, including her 1936 initiation. From left, Texas Delta JANE ZACHARY WOODS, Louisiana Betas MARTHA RANDALL SINGER, BARBARA SPERRY BEARDEN, BARBARA DENHAM GUGLIELMO, Texas Delta MARGARET LAWHON SCHOTT and Louisiana Beta MEG CONERLY CASPER. Seated, Louisiana Beta RAYE PIERCE NELSON.



## NEW YORK

Several New York Gammas celebrated their 40th reunion at Paradox Lake in the Adirondack Mountains. During their visit, the women held a Cookie Shine and gave each other halos, angel charms and arrow magnets. The sign, reading “Ye Olde Arrow Inn,” was made for the occasion. The women are pledge class members from 1968–1970.



## OHIO

In September, the Ohio Beta pledge class of 1957 gathered on campus at The Ohio State University for a week of reconnecting and remembering. The women stayed in their old rooms in the Ohio Beta Chapter house, toured campus and cheered the Buckeyes to victory. Attendees agreed it was an event they will always remember.



## OHIO

Members of Ohio Zeta pledge classes 1957–1959 celebrated 50 years of friendship on Emerald Isle, North Carolina. From left, MARY LYNN MILLER PREGLER, NANCY WEBSTER DUTRO, SALLY BENDER FOSTER, MERRY GORE VALENTIN, DIANE WETHERILL SCHOOLS, JO ANN SMITH KELLY, JUDY NIEHOUS SWAYNE and BARBARA KLEIN LINDENBERG.



## OREGON

The Oregon Alpha pledge class of 1953 enjoyed a five-day reunion at Sunriver Resort in Bend, Oregon. From back left, SHIRLEY MCCOY MCINTYRE, JACKIE ROBERTSON DEKONING, NANCY LEAVERTON CAUGHLAN, PAT CASE OWEN and PAT SOUTHWORTH DICKOVER. From front left, LEILA LEMMON JOSSY, NITA HAMILTON THOMSON and BEV JONES RUGGLES.





## UTAH

**Utah Alphas from 1961–1965 pledge classes gathered for a summer reunion on the University of Utah campus.**

As part of a fundraiser for the Utah Alpha Chapter House Corporation, the women stayed at the Utah Alpha Chapter house. The women enjoyed spending quality time with their Pi Phi sisters and participating in activities on campus and in downtown Salt Lake City. The Pi Phis traveled from 13 different states and Canada to attend the reunion weekend.



## WASHINGTON

**Several Washington Alphas gathered to celebrate their 50th birthdays in Park City, Utah.** The women enjoyed yoga, hiking, shopping and lots of laughter. From back left, KRISS HOSSFELD HODGE, SHEILA MCKAY RYAN and CLAIRE BETHKE WILLEY. From front left, MARY CATHERINE SETO GERLACH, BARB HAPEDIS HERR, ELIZABETH JARMUTH SUHRBIER and KELLY COMSA EGECK.



## WYOMING

**Wyoming Alphas from 1953–1955 pledge classes went on an Alaskan cruise in September.** The women enjoyed catching up with one another and seeing the Alaskan sights, including glaciers and wildlife. The cruise also featured history talks of Alaska. From left, JANET ROYER SMITH, BETH GARBUTT BRIEDEHOEFT, JANE RENKEL, EMILY SUMMERS DOHERTY, ANN GARBUTT RYAN and MARGE CLARE SWEENEY.



# In Memoriam

Because of space constraints, *The Arrow* will only print the entirety of an obituary for a past Grand President. If you know a sister who has died within the last year, please inform Pi Beta Phi Headquarters. Names will only be listed in *The Arrow* if accompanied by a published notice, including those names entered electronically via eReports, Pi Phi's online reporting system. Published notices include a newspaper or newspaper website obituary, a funeral program/prayer card or a listing in a college/university alumni newsletter. Email Alison Bauer at [alison@pibetaphi.org](mailto:alison@pibetaphi.org) or mail to Headquarters.

*From the Editor:*

*In Memoriam will be noticeably longer than in the past due to efforts to maintain a more accurate database by utilizing new Internet search methods. The Arrow would like to thank Oregon Alpha MAJA TANAKA BERGE for her help updating the Pi Beta Phi database.*

## **Alabama Alpha**

Charlotte Tate Jackson  
1962; August 2011  
Mary Price McCord  
1937; September 2011

## **Arizona Alpha**

Adrienne Zimmerman Adam  
1932; September 2011

## **Arkansas Alpha**

Susannah Handy Porter  
1953; August 2011  
Jean Ahlemeyer Tuttle  
1945; October 2011

## **Arkansas Beta**

April Phillips Rush  
1965, affiliated Arkansas Alpha;  
September 2011

## **California Alpha**

Martha Austin Mist  
1943; July 2011

## **California Beta**

Carolyn Huber Quinn  
1948; June 2011  
June Christensen Tutton  
1942; October 2010

## **California Gamma**

Pat Tinkham Sparkuhl  
1950; October 2011

## **California Lambda**

Polly Young Russell  
1995; November 2011

## **Colorado Alpha**

Marcia McGillan Cummings  
Hulick  
1958; September 2011  
Sandra Wilcox McDougal  
1960; September 2011  
Mildred Heath Paxton  
1954; July 2011

## **Colorado Beta**

Ruth Stuver Murtaugh  
1943; August 2011

## **Connecticut Alpha**

Kathleen Bassett Hansen  
1951; August 2011  
Barbara Draper Johnson  
1943; May 2011  
Barbara Olsson McNamara  
1944; August 2011

## **D.C. Alpha**

Bernadine P. Healy  
2007; August 2011  
Margaret Nicol Morgan  
1939; September 2011

## **Florida Alpha**

Olive Smith Greenlund  
1951; September 2011  
Karen Kane Turk  
1962; April 2011

## **Florida Beta**

Judy Milton Johnston  
1958; October 2011

## **Florida Gamma**

Emilie Gautier Gordon  
1941; July 2011

## **Idaho Alpha**

Phyllis Buroker Reynolds  
1942; September 2011

*In Memoriam lists the name, initiation year, and month and year of each member who has died.*

## **Illinois Alpha**

Alison Chisholm Hanham  
1969; August 2011  
Helen Hicks  
1940; September 2011

## **Illinois Beta-Delta**

Jane Webster Battersby  
1947; July 2011  
Nancy Roman Cunningham  
1949; August 2011  
Janet Rogers Doyle  
1942; July 2011

## **Illinois Eta**

Jeanne Hanson Eberly  
1940; September 2011  
Melanie Ruth Gaden  
1973; September 2011  
Nancy Freischlag Keith  
1965; September 2011  
Joanne Patterson Leonard  
1942, affiliated Illinois Zeta;  
August 2011

## **Illinois Theta**

Emily Blair Beck  
1947; July 2011  
Barbara Blair Bergin  
1947; June 2011  
Doris Lundberg Chronic  
1947; April 2011  
Ruth Belsterling Miller  
1947; May 2011

## **Illinois Zeta**

Nancy Jones Burke  
1943; August 2011  
Josephine Hemmingson  
Marwick  
1940; September 2011



**Indiana Alpha**

Norma Warrick Schaumburg  
1948; affiliated Illinois Theta;  
August 2011

**Indiana Beta**

Patricia Alsop Bell  
1958; September 2011  
Elinor Beecher Eastman  
1943; September 2011  
Dyane Marie Luker  
1983; October 2011  
Jane Scudder Turnley  
1951; July 2011

**Indiana Delta**

Orpha O'Rourke Coenen  
1935; October 2011  
Susan Carlson Harbridge  
1961; June 2011  
Marilyn Ruth Kelsey  
1953; August 2011  
Catherine Schroeder Wiley  
1936; August 2011

**Indiana Epsilon**

Mary Card Harbaugh  
1986; October 2011  
Janet Murphy Heyer  
1974; October 2011

**Indiana Eta**

Phyllis Minnich Florea  
1974; September 2011

**Indiana Gamma**

Doris Griffith Huesing Barrett  
1939; August 2011  
Helen Arzet Lewis  
1930; August 2011

**Indiana Zeta**

Rose Hartman Russell  
1952; August 2011

**Iowa Alpha**

Elna Stewart Huffman  
1933; August 2011  
Imogene Bates Latka  
1939; August 2011

**Iowa Gamma**

Martha Jane Huntington  
1980; July 2011

**Iowa Zeta**

Judith Webber Ohl  
1958; March 2011  
Helen Judt Parsons  
1943; October 2011

**Kansas Alpha**

Frances Grey Armstrong  
1933; August 2011  
Carolyn Bailey Berneking  
1935; August 2011  
Sidney Ashton Garrett  
1966; August 2011  
Betty Rowton Holt  
1942; September 2011  
Julie Mercer Lee  
1977; September 2011  
Karen McCarthy  
1966; October 2010  
Rita Evans Stark  
1973; October 2011  
Ann Bramley Wynne  
1969; August 2011

**Kansas Beta**

Joan Peters Leonard  
1957; September 2011  
Nancy Diggle Root  
1946; August 2011

**Kentucky Alpha**

Eugenia Stuart Barnes  
1939; September 2011

**Louisiana Alpha**

Karen Akard Deal  
1957, affiliated Texas Gamma;  
September 2011

**Louisiana Beta**

Raye Nelson Pierce  
1936; November 2011  
Lois Leche Windle  
1954; October 2011

**Maine Alpha**

Judith Newton Crompton  
1948; July 2011

**Massachusetts Alpha**

Dorothy I. Warner  
1926; September 2011

**Massachusetts Beta**

Lois Ann Banister  
1944; September 2011

**Michigan Alpha**

LaMoine Grove McMurray  
1946; October 2011

**Michigan Beta**

Margaret Dodds Forbes  
1935; August 2011  
Eileen Hickey King  
1947; October 2011

**Minnesota Alpha**

Janet Carlson Bonnell  
1944; October 2010  
Juliana Haas Dacy  
1943; September 2011  
Catherine Gavin Woolley  
1935; August 2011

**Missouri Beta**

Helen Close McCann  
1935; May 2011  
Gloria Elsner Mills  
1942; October 2011  
Virginia Reddish Workman  
1948, affiliated Missouri Alpha;  
September 2011

**Missouri Gamma**

Ann Angle Booth Wilson  
1948; August 2011

**Montana Alpha**

Peggy Cole Hollier  
1943; July 2011

**Nebraska Beta**

Sue Cochran Haythorn  
1945; December 2010  
Elizabeth Stanton Searle  
1943; September 2011  
Kathryn Legge Tegt  
1944; September 2011

**Nevada Alpha**

Eleanor Sweatt Buck  
1947; May 2011  
Nadine Gibson Mahoney  
1942; September 2011

**New Mexico Alpha**

Nadeanne Neff Calhoun  
1948; October 2011

**New Mexico Beta**

Pamela Sue Creek  
1972; July 2011

**New York Delta**

Nancy Ladd Leet  
1949; October 2011  
Theodora Uelzmann  
Longenecker  
1942; August 2011

**New York Gamma**

Mary Gavin Brenneman  
1946; May 2011  
Hulda Knapp Pfeiffer  
1934; October 2011

**North Carolina Alpha**

Jill Beth Hickey  
1967; May 2011  
Eunice Patten Jones  
1940; September 2011  
Mollie Spruill Thompson  
1957; May 2011

**North Dakota Alpha**

Beverly Brynjolfson Hart  
1946; October 2011  
Hazel Ellsworth Sands  
1939; March 2011

**Ohio Beta**

Martha Gittins Bricker  
1940; August 2011  
Jean Crayton Collinson  
1935; September 2011  
Alberta McGee King  
1934; September 2011  
Nanci Campbell Quillin  
1951; May 2011  
Marjorie Edmonds Rankin  
1939; August 2011  
Margaret Pride Wickersham  
LaRowe, 1959; March 2011  
Martha Adams Wood  
1941; September 2011

### Ohio Delta

Lois Johnston Walpole James  
1938, affiliated Ohio Alpha;  
August 2011

Sue Preece Poll  
1945; October 2011

### Oklahoma Alpha

Marian Brown  
1941; August 2011

Sue Dalby Casebeer  
1974; October 2011

Ethel Clark Saunders  
1938; August 2011

Nancy Baker Windt  
1959; August 2011

Betty Baublits Yarberry  
1943; October 2011

### Oklahoma Beta

Louemma Breckenridge Brookey  
1949; August 2011

Dorothy Lewis Crudup  
1944; October 2011

Conlee Caldwell Jewett  
1949; August 2011

Sancha Griffith Lance  
1957; October 2011

### Oregon Beta

Thelma Cole Knox  
1925; August 2011

Marylou McEachron Lord  
1939; September 2011

Lois Balzer Tupling  
1930; July 2011

Ann Williams  
1950; July 2011

### Oregon Gamma

Beverly Briggs Cross  
1945; August 2011

### Pennsylvania Beta

Betty McCormick Ackley  
1938; October 2011

Helen Simpson Brembeck  
1941; August 2010

### South Carolina Alpha

Minerva Wilson Andrews  
1942; September 2011

### South Dakota Alpha

Sylvia Benson Phillips  
1959; September 2011

### Tennessee Alpha

Virginia Winger McAllester  
1950; August 2011

Marjorie Parks Valentine  
1946; March 2011

### Tennessee Beta

Lelia Sargent Johnson  
1944; September 2011

Barbara Southgate Mahoney  
1948; April 2011

Carolyn Southgate Sartor  
1945; March 2011

### Tennessee Delta

Sue Bray Jennings  
1962; September 2011

### Texas Alpha

Suzanne Thomason Atkinson  
1943; October 2011

Clemmie Cummings Barclay  
1934; October 2011

Clarita Fonville Buie  
1946; July 2011

Marilyn Sadler Duncan  
1951; August 2011

Lucyle Glover Hargis-Strange  
1933; March 2011

Patricia Brinsmade Turner  
1963; August 2011

### Texas Beta

Betty Lowell Phillips  
1954; October 2011

Patricia Anne Smith  
1976; May 2011

### Texas Gamma

Bette Deal Matson  
1953; June 2011

### Utah Alpha

Janice Burdette Affleck  
1948; September 2011

Jane Wright Bauter  
1934; March 2011

### Vermont Alpha

Louise Roberts Avery  
1936; July 2011

Shirley Whitney Juneo  
1954; August 2011

### Vermont Beta

Sally Hallagan Ashnault  
1949; March 2011

Helen Calleja Bird  
1933; September 2011

Joan Manley Laclair  
1960; August 2011

Barbara Farnham Spalding  
1953; October 2011

### Virginia Alpha

Nancy Wood Fair  
1942; October 2011

Dorothy Blair Chapman Goodloe  
1938; October 2011

Kitty Black Rinehart  
1940; June 2011

Lorene Robertson Zonne  
1951, affiliated Texas Alpha;  
September 2011

### Virginia Delta

Jane Hudson Farleigh  
1965; August 2011

### Virginia Epsilon

Susan Nelson Fleiss  
1995; April 2011

### Virginia Gamma

Marian Hough Gibbs  
1948; September 2011

Shirley Green May  
1949; October 2011

### Washington Alpha

Melanie Crosseit Duyungan  
1975; October 2011

Elizabeth Smith Rourke  
1941; September 2011

Mildred Jean Stiles  
1943; August 2011

### Washington Beta

Eleanor Sprague Chester  
1933; August 2011

Janet McBride Fanning  
1956; September 2011

Marian Folger Salt  
1939; August 2011

Doris Haight Shelly  
1943; September 2011

### West Virginia Alpha

Betty Lawson Allman  
1940; September 2011

### West Virginia Beta

Lorrayne Marquette McGee  
1950; September 2011

### Wisconsin Alpha

Beatrice Tiefenthaler Hoekstra  
1942; September 2011

Dorothy Jambor Pellegrin  
1937; October 2011

### Wisconsin Beta

Mary Taggart Timmcke  
1945; September 2011

### Wyoming Alpha

Laurel Carmin Constantinides  
1992; July 2011

Margaret Lynch Macaluso  
1949; May 2011





# VALENTINE SWEETHEART LOVE

A	X139	<b>GRAFFITI T-SHIRT</b> Our Graffiti design is printed on an American Apparel® T-shirt. Front and back screen print design. <i>Unisex fit, cotton.</i>	\$26	F	X501	<b>CRYSTAL BRACELET</b> In the spirit of "the wine and silver blue," this piece is made of genuine Swarovski® crystals. 7.5" long. <i>Sterling silver.</i>	\$45
B	X133	<b>LOVE T-SHIRT</b> This fun, trendy design is printed on an American Apparel T-shirt. Front and back screen print design. <i>Unisex fit, cotton.</i>	\$30	G	X503	<b>HEART CHARM BRACELET</b> 7.5" long. <i>Silver-plated.</i>	\$25
C	X508	<b>SCRIPT HEART PENDANT</b> 1/2" in diameter. <i>Sterling silver.</i>	\$21.50	H	X520	<b>HEART LIMOGES BOX</b> <i>Authentic Limoges box. Hand-painted.</i>	\$140
D	X512	<b>HEART LARIAT NECKLACE</b> Blue-quartz bead. Adjustable chain, 16-18". <i>Silver-plated.</i>	\$28	<i>(Opposite page)</i>			
E	X506	<b>HEART TAG PENDANT</b> 1/2" in diameter. <i>Sterling silver.</i>	\$21.50	I	MD219	<b>PINK SAPPHIRE AND PEARL BADGE</b> 10k gold.	\$225
				J	MD220	<b>PINK SAPPHIRE BADGE</b> 10k gold.	\$225

To view our complete line, visit [www.pibetaphi.org/store](http://www.pibetaphi.org/store).

# Pi Phi Express



"Like" us on Facebook!



**FREE "LOVE" TOTE** WITH ANY MERCHANDISE PURCHASE OF \$75 OR MORE!\*

\*Offer ends February 14, 2012

K	MD203	<b>PEARL BADGE WITH DIAMOND POINT</b> 10k gold.	\$250	R	PMD200	<b>BARREL CHARM BRACELET</b> Clasp can be removed to slide charm on. Silver-plated.	\$6
L	MD176	<b>FLOATING HEART NECKLACE</b> 18" chain. Sterling silver.	\$45	S	MD216	<b>OPEN HEART RING</b> This fun and trendy ring is sure to steal her heart! The band is engraved with the Fraternity's Greek letters. Whole sizes only. Sterling silver.	\$50
M	MD190	<b>HEART NECKLACE</b> Approximately 5/8". Sterling silver.	\$60	T	MD141	<b>ARROW RING</b> Classic! The arrow ... the symbol of the Fraternity. Sterling silver.	\$100
N	MD108	<b>HEART AND ARROW PENDANT</b> Approximately 1/2". Sterling silver.	\$25	U	MD127	<b>CUSHION RING</b> Beautiful and classic. Pink sapphire. Sterling silver.	\$175
O	MD138	<b>HEART DROP PENDANT</b> Approximately 1". Sterling silver.	\$32				
P	MD141	<b>CREST PENDANT</b> Approximately 1". Sterling silver.	\$38				
Q	MD136	<b>GREEK LETTER BARREL CHARM</b> The hottest trend in jewelry! Fits Pandora® and Trollbeads® bracelets. Sterling silver.	\$35				

(800) 322-1867

## T.A.K.E. Founder Honored by President Obama

Roger Kemp, founder of The Ali Kemp Educational (T.A.K.E.™) Foundation, received the Presidential Citizens Medal from President Barack Obama this past October. The award is given to Americans who have “performed exemplary deeds of service for their country or their fellow citizens” and is the second highest honor a civilian can receive.

The 13 award recipients were chosen from nearly 6,000 nominations. Obama said the honorees “were chosen not just for the work they do, but for the example that they set.”

Roger founded T.A.K.E. in 2002 after his 19-year-old daughter, Kansas Beta ALI KEMP, was murdered. The program teaches young women self-defense skills to help fight off potential attackers.

More than 46,000 women have participated in T.A.K.E. workshops over the last 10 years in cities and university campuses across the United States. Many Pi Beta Phi chapters host T.A.K.E. workshops for their Panhellenic community as part of Pi Phi’s member development program, *Leading with Values*.

“I received this award for all Pi Phis and for everyone who has helped us support T.A.K.E.,” Roger said. “Pi Beta Phi meant so much to Ali and for Pi Phi to



Roger Kemp, founder of The Ali Kemp Educational (T.A.K.E.) Foundation, received the Presidential Citizens Medal from President Obama during a ceremony at the White House. Because of Roger’s work, more than 46,000 women have learned self-defense skills through T.A.K.E. workshops.

support us and partner with us means a great deal.”

Roger said while he didn’t start T.A.K.E. in order to win awards, he appreciates the recognition and was especially honored that President Obama knew intimate details about the foundation.

“This award isn’t the culmination of anything, it’s just the beginning,” Roger said. “We’re just getting going.”

## First Book Canada Opens New Facility

In September, First Book Canada hosted an open house at their new office and distribution center. The facility is located in Mississauga, Canada, near the city of Toronto. Previously, First Book Canada relied on donors for office, warehouse and shipping space.

Local dignitaries, partners, volunteers and donors were present for the open house, including Mississauga City Councillor Bonnie Crumbie. Canadian Philanthropies Committee Chairman MARILYN CLARK, Ontario Beta, attended the event on behalf of Pi Beta Phi.

“We congratulate First Book Canada on this wonderful milestone and wish them great success in helping to improve literacy across Canada,” Marilyn said.



First Book Canada celebrated the opening of its new office and distribution center in Mississauga, Canada. From left, First Book Canada Executive Director Tom Best; Canadian Philanthropies Committee Chairman MARILYN CLARK, Ontario Beta; City Councillor Bonnie Crumbie; and First Book Canada Director of Operations Wayne Cochrane.



## The Arrow Reader's Guide

*The Arrow*<sup>®</sup> of Pi Beta Phi is the official quarterly publication of Pi Beta Phi Fraternity. The purpose of *The Arrow* is to present matters of value to Pi Beta Phi; furnish a means of communication among collegiate chapters, alumnae organizations and officers; and represent the worthiest interest of Fraternity women.

### CONTACT THE ARROW:

*The Arrow* of Pi Beta Phi Fraternity  
1154 Town & Country Commons Drive  
Town & Country, Missouri 63017  
TheArrow@pibetaphi.org  
Phone: (636) 256-0680 Fax: (636) 256-8095

### HOW TO RECEIVE THE ARROW

Collegians receive quarterly issues of *The Arrow* each year with payment of collegiate dues through their chapter. Individual copies are mailed to each undergraduate member's permanent address, and each Pi Beta Phi chapter receives six copies.

The Fall *Arrow* is mailed to all alumnae. Dues paying alumnae are mailed the winter, spring and summer issues. *The Arrow* is posted online, and non-dues paying alumnae who have a good email address listed with Headquarters (HQ) receive an email notification. Messages are also posted on the Fraternity's official Facebook page and Twitter when the magazine is available online.

To receive four hard copy issues of *The Arrow*, pay your \$25 annual Fraternity alumna dues to your local alumnae organization or directly to HQ by mailing a check to Pi Beta Phi Fraternity, Alumna Dues, 1154 Town & Country Commons Drive, Town & Country, Missouri 63017. You can also click on the Pay Dues button on the home page of [www.pibetaphi.org](http://www.pibetaphi.org).

### HOW TO MAKE AN ADDRESS CHANGE OR NAME UPDATE

Visit the profile section of eSisters, or email your name and/or address changes to [headquarters@pibetaphi.org](mailto:headquarters@pibetaphi.org). You may also call Pi Beta Phi HQ at (636) 256-0680 or mail a written notice to Pi Beta Phi Headquarters.

### LETTERS TO THE EDITOR

Email your letter to the Editor at [editor@pibetaphi.org](mailto:editor@pibetaphi.org). Please include your full name and chapter of initiation. *The Arrow* reserves the right to publish any letter received. Letters may be edited for space and clarity.

### HOW TO GET PUBLISHED

All Pi Phis are encouraged to submit news and stories to *The Arrow*. All submissions are subject to editing for content, grammar and space constraints. When submitting a story, be sure to include a member's preferred chapter, first, maiden and last names. As a general rule, *The Arrow* does not print stories about weddings, engagements, pinnings or birth announcements. Visit *The Arrow* webpage for more information and to download Pi Beta Phi's Photography Guidelines. We cannot guarantee the publication of any submission. We receive so many and space is limited.

### ARROW SUBMISSION DEADLINES

Spring Issue: February 1      Summer Issue: May 1  
Fall Issue: August 1      Winter Issue: November 1

## Foundation Scholarship Applications Online

Attention collegians and alumnae! Pi Beta Phi Foundation undergraduate, graduate fellowship and Alumnae Continuing Education (ACE) scholarship applications for the 2012–2013 academic year are now available.

To view a listing of available scholarships, visit [www.pibetaphifoundation.org/scholarship-program](http://www.pibetaphifoundation.org/scholarship-program). Applications are due by February 15, 2012.

## Children with Special Needs

*The Arrow* is still looking for stories about children with special needs. Are you a parent of a child with special needs or a professional who works with children with special needs? What challenges have you faced while teaching and raising these children? What rewarding experiences have you had with these children?

Please email your story and high-resolution photos to *The Arrow* Editor CONSTANCE DILLON, California Delta, at [editor@pibetaphi.org](mailto:editor@pibetaphi.org).

## Extension Alert

Pi Beta Phi is excited to announce it has been invited to colonize at the University of San Diego (USD). Pi Phi submitted extension materials to the University's expansion committee for review in September with the intent of being one of the groups chosen to join the Greek community. Pi Phi was one of two groups chosen to make a presentation to the University's Panhellenic community. The Fraternity was notified at the end of November it was chosen to colonize in fall of 2014. Our friends at Kappa Delta will join the USD Greek community in the fall of 2012.

**CORRECTIONS:** In the Fall 2011 issue of *The Arrow*, Kansas Beta was mistakenly omitted from the list of Balfour Cup winners on Page 25. In 2001, Kansas Beta became the sixth chapter to retire the Balfour Cup. On page 16, it was stated the Utah Alpha Chapter house was purchased in 1961. The house was purchased in 1926 by Gamma Phi women — that group joined Pi Beta Phi in 1929. In 1961, Utah Alpha purchased the house next door, joined the two homes and the house took on the appearance it still has today. The photo printed on Page 32 of Ohio Alpha LEANNE FORD was taken by photographer Joshua Black Wilkins. It was reported on Page 36 that Mississippi Alphas TORI CARTER CRUM and CRISTINE BREERWOOD RAINES donated more than 900 shoes to a Hattiesburg, Mississippi, elementary school. The shoes were collected in Hattiesburg and donated to a school in Aiken, South Carolina. *The Arrow* apologizes for these errors and regrets any confusion they may have caused.



Pi Beta Phi Fraternity  
1154 Town & Country Commons Drive  
Town & Country, MO 63017

CHANGE SERVICE REQUESTED

NONPROFIT ORGANIZATION  
U.S. POSTAGE PAID  
HANOVER, NH 03755  
PERMIT NO. 104

*If I could*

**GIVE**

A PI BETA PHI FOUNDATION  
TRIBUTE GIFT TO HONOR A PI PHI,  
IT WOULD BE FOR



Remember someone special or celebrate a milestone by making a gift to **Pi Beta Phi Foundation**. Honorees receive a card from the Foundation announcing the gift, and both the honoree and donor will be recognized in the Foundation's biannual newsletter, *The Bow*.

To make a gift today, visit [www.pibetaphifoundation.org](http://www.pibetaphifoundation.org) and click **Donate Now**.

