

The Arrow OF PI BETA PHI



All Hands In

Page 4

ALSO INSIDE:

**\$10,000 Grants Given to
Two Tuscaloosa Schools**

Page 18



PI BETA PHI FRATERNITY

ΠΒΦ

Founded 1867

FOUNDERS

Emma Brownlee Kilgore

Margaret Campbell

Libbie Brook Gaddis

Ada Bruen Grier

Clara Brownlee Hutchinson

Fannie Whitenack Libbey

Rosa Moore

Jennie Nicol, M.D.

Inez Smith Soule

Fannie Thomson

Jennie Horne Turnbull

Nancy Black Wallace

MISSION STATEMENT

The mission of Pi Beta Phi Fraternity for Women is to promote friendship, develop women of intellect and integrity, cultivate leadership potential and enrich lives through community service.

VISION STATEMENT

Pi Beta Phi Fraternity is committed to being recognized as a premier organization for women by providing lifelong enrichment to its members and contributing to the betterment of society.

CORE VALUES

Integrity

Honor and Respect

Lifelong Commitment

Personal and Intellectual Growth

Philanthropic Service to Others

Sincere Friendship

The OF PI BETA PHI
Arrow



Features

- 4 All Hands In
- 12 Make Your Mark for Literacy — Online
- 14 Meet the 2011 Carolyn Helman Lichtenberg Crest Award Winners
- 18 \$10,000 Grants Given to Two Tuscaloosa Schools
- 28 Collegians Make Coast-to-Coast Connections

Follow us online:



Facebook®
www.facebook.com/pibetaphi



Pinterest®
www.pinterest.com/pibetaphi



LinkedIn®
www.linkedin.com



Twitter®
www.twitter.com/pibetaphihq



Pi Beta Phi Blog
www.pibetaphiblog.org



YouTube®
www.youtube.com/pibetaphihq

The Arrow of Pi Beta Phi is published by Pi Beta Phi Fraternity, 1154 Town & Country Commons Drive, Town & Country, Missouri 63017. POSTMASTER: Send address changes to *The Arrow of Pi Beta Phi*, 1154 Town & Country Commons Drive, Town & Country, Missouri 63017.

LinkedIn® is a registered trademark of LinkedIn Corporation.
Facebook® is a registered trademark of Facebook, Inc.
Wordpress® is a registered trademark of Automattic Inc.

Pinterest® is a registered trademark of Cold Brew Labs, Inc.
Twitter® is a registered trademark of Twitter, Inc.
YouTube® is a registered trademark of Google, Inc.



View
The Arrow[®]
 online at
www.pibetaphi.org

ARROW EDITOR

Constance Dillon
 editor@pibetaphi.org

**MARKETING & COMMUNICATIONS
 DIRECTOR, HEADQUARTERS**

Eily Cummings

CREATIVE DIRECTOR

Tim Steele

EDITORIAL STAFF

Kelly O'Neill
 Jennifer Whitom Schmidt

GRAND COUNCIL

Mary Loy Tatum
 Grand President

Cara Ballard Sutcliffe
 Grand Vice President Collegians

Cindy Rice Svec
 Grand Vice President Alumnae

Diane Bielman
 Grand Vice President Communications

Rae Wohlhueter Maier
 Grand Vice President Finance

Paula Pace Shepherd
 Grand Vice President Membership

Julie Carney
 Grand Vice President Programming

PI BETA PHI HEADQUARTERS
 1154 Town & Country Commons Drive
 Town & Country, Missouri 63017
 (636) 256-0680 • FAX (636) 256-8095
headquarters@pibetaphi.org
www.pibetaphi.org

Departments

- 2 Perspective
- 3 From our Readers
- 10 Literacy
- 20 Campus Living
- 22 Collegiate News
- 27 In Her Words
- 30 Foundation
- 32 Alumnae News
- 37 Remember
- 38 Volunteers
- 40 Reunions & Anniversaries
- 42 In Memoriam
- 46 Pi Phi Express[®]
- 48 News & Notes



ON THE COVER: Virginia Eta ELIZABETH BOSCHINI traveled to the Dominican Republic to train teachers of the deaf, including modeling hands-on learning exercises with students. Five Pi Phis, including Elizabeth, share their experiences with special needs children, beginning on Page 4.



Member Fraternity Communications Association

What Does Service Mean to You?

With the introduction of the Fraternity's new literacy platform, Read. Lead. Achieve., we are learning about the tremendous service completed by so many Pi Phi women. We are also learning how Pi Phis have individually defined what service means to them. Our members, both young and old, believe Pi Phi's philanthropic work should make its impact locally.



JULIE CARNEY
Grand Vice President Programming
Texas Beta
Southern Methodist University

In the dictionary, the word service has more than five possible definitions. It can mean many things — and it should. In my opinion, that is the unique aspect of service. While it can be many people doing completely different things, at the end of the day, the purpose is always the same: the desire to give to others, to share with others and to love with others.

To a young girl, service could be babysitting a neighbor's child with no compensation, in order to give the mother a "day off." To a collegian, service can mean the number of hours she logs completing volunteer projects on campus. To the recent graduate in a new city, service can be working in a local food bank. To a caretaker, it could be reading to the elderly at a local nursing home. To a parent, service could be chaperoning a field trip or assisting a teacher with a class event. The possibilities — and the benefits — for service are endless.

However, service doesn't have to be an action or a one-time effort. To some, service is their career and their life: mothers, members of our Armed Forces and teachers, to name a few. These people have chosen their profession out of a desire to serve others. They never turn off their service "switch," because service is inherent in them. The same is true for a Pi Phi. I truly believe a member never stops being a Pi Phi. Everything she does — whether in class, at an event, at home or at the office — she keeps our core values, including philanthropic service to others, in her back pocket.

Recently, as I was returning home from the Leadership Academy in Atlanta, I arranged to meet with a dear friend and Pi Phi sister prior to my flight back to Washington, D.C. We agreed to meet in the Atlanta airport for lunch. When we finished, she went to track down our waitress for the check. On the way to find her, she stopped by the table of a soldier who was returning home from a tour of duty and so was dining alone. She placed her hand on his shoulder, and they talked for a minute. At the end of their conversation, my friend reached down, picked up his check and walked off.

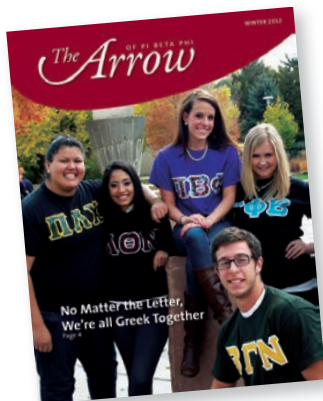
At its heart, service is an indefinable action that produces indescribable feelings. Though we are all different and our strengths are all diverse, together we can make a difference.

Ring Ching,

A handwritten signature in black ink that reads "Julie Carney".

Julie Carney

From our Readers



I recall singing the Pierce-Arrow song when I was initiated at Ohio Wesleyan University in 1980. I remember (most of) the words printed in *The Arrow*. My chapter sang a lot and when my sons were babies, I sang many Pi Phi songs to them. The words are stored in my head for eternity!

MARYJANE MILLER HOTALING
Ohio Delta — St. Louis

I enjoyed the article about The Grace Coolidge Library and was intrigued to learn Howard Chandler Christy painted First Lady GRACE GOODHUE COOLIDGE's portrait, as she looks a good deal like his favorite model, who appeared in many of his paintings. I am also curious when the library closed and where the books were dispersed.

LUCY HUNTER WASHBURNE
Tennessee Beta — Dallas

From the Editor: In 1968, oversight of Pi Beta Phi High School was transferred to Sevier County, Tennessee. At that time, the school moved to a new building, and The Grace Coolidge Library was dismantled. The books in the best condition were transferred to the new school, and the books in poor condition were discarded or moved to the nearby Arrowmont® staff house library, where some still remain on bookshelves today.

Marilyn Simpson Ford

I am sure you are aware of the passing of longtime *Arrow* Editor MARILYN SIMPSON FORD, Nebraska Beta, this past January. I wanted you to know, at the celebration of her life, every Pi Phi had on her arrow badge and her family and other friends all had on some kind of arrow emblem.

Marilyn was the first Pi Phi I met when I arrived in Atlanta in 1968, and she got me off to a good start while she was president of the Atlanta Alumnae Club.

SUSAN BOODIN PLAYER
Illinois Zeta — Atlanta

Finally Greek, Thanks to Pi Beta Phi

I have always had a strong connection to Quinnipiac University. My parents are alumni and work for the University, so as a child I spent many days on campus. These included visits to my aunt, a staff member of the university's Student Center and Campus Life office.

I was thrilled to hear of Pi Beta Phi's extension to Quinnipiac, especially after my initiation into New York Eta in 2010. My excitement as a new initiate was mutually met by my aunt's excitement for Pi Phi to join the Quinnipiac Greek community. Not a single conversation passed without the mention of Pi Phi. Imagine my shock and tears of happiness when my aunt told me she would become an alumna initiate at Connecticut Gamma's Installation.

An education from New York University is far from conventional. In a city of millions, it's easy to experience an overwhelming feeling of loneliness, which is why I sought out a sisterhood. During recruitment, I entered the Pi Phi room amidst an assembly of singing women. They stepped forward, took my hand and have never let go. The women are outstanding in their accomplishments, diversity and sincerity. I am honored to be part of a family of exemplary women.

With the utmost sincerity, I thank the Fraternity for allowing me to share my Pi Phi sisterhood with my aunt, Connecticut Gamma MARIA MONIELLO, a person so endlessly important to me. After attending my aunt's initiation ceremony, I realize I am just one member of an interconnected community of exceptional women. My journey as a Pi Phi will span much farther than my undergraduate education, and I look forward to my lifelong opportunities for growth and accomplishment.

KATHLEEN MERIANO
New York Eta — New York

CORRECTIONS: On page 28 of the Winter 2012 issue of *The Arrow*, it was incorrectly stated Pi Beta Phi Foundation's Alumnae Continuing Education (ACE) Committee awarded more than \$229,000 in scholarships last year. Pi Beta Phi Foundation, not the ACE Committee, awarded more than \$229,000 in scholarships and fellowships this year. The error was corrected in the online edition of *The Arrow*. On page 34, it was reported members of the Indianapolis Alumnae Club and Bloomington-Normal, Illinois, Alumnae Club attended a luncheon at the L.S. Ayres Tea Room. It was members of the Bloomington, Indiana, Alumnae Club which attended the event with members of the Indianapolis Alumnae Club. *The Arrow* apologizes for these errors and regrets any confusion they may have caused.



ALL

FIVE PI PHIS REFLECT ON HOW A CHILD WITH SPECIAL NEEDS

HANDS

BROUGHT TOGETHER THEIR FAMILIES AND PI PHI SISTERS.

IN

Larsen had a gift: she truly and deeply touched people.

TAMARA GREMILLION, *Mississippi Alpha*

I always knew I wanted to be a mother — it was the one thing I had wanted my whole life. My husband and I had gone through in vitro fertilization to get pregnant, and I was able to get pregnant on the first attempt. At 39 weeks, I had to undergo an emergency C-section because our baby was in fetal distress.

Later, in recovery, my husband told me we needed to decide on a name because the doctors weren't sure our daughter was going to survive. I was devastated. In the days that followed, our daughter, Larsen Grace, underwent open-heart surgery and numerous tests, until the doctors determined she had Alagille Syndrome, a rare genetic disorder affecting her heart, liver and pulmonary arteries. We were told she might survive a year, two if we were lucky.

Feeding tubes, multiple medications, prescription vitamins and high-calorie formula became the daily routine. Multiple trips to Vanderbilt Children's Hospital became the norm for ultrasounds of her heart, monthly blood draws to check her liver and treatment for any minor illness she encountered, such as a cold. It was the most frustrating disease, because remedies that help a healthy person would end up damaging her liver further.

When we were in public, people would stare,

and many stopped to comment on Larsen's beauty. However, I began to realize some people were staring because of her jaundice. I tried to explain her disease, but eventually stopped because the questions from strangers became too intrusive and painful.

I was most surprised by the comments from doctors, including one who said he was "coming to see the yellow baby." I hurt for my daughter. As Larsen got older, how would she understand people would potentially exclude her based on her appearance?

Larsen had a gift: she truly and deeply touched people. Around her second birthday, Larsen fell out of her bed and underwent emergency brain surgery. Shortly after, as several nurses were transporting her, she suddenly thanked them and told them she loved them. How is it possible for a 2-year-old to have that much grace and love?

My Pi Phi sisters from college and the Nashville, Tennessee, Alumnae Club provided amazing support, from organizing prayer chains to bringing us dinner — even when there wasn't some kind of crisis. I am eternally grateful to my Pi Phi sisters. The bonds really do last a lifetime and through all different seasons of life.

Sadly, Larsen passed away in January 2011 at age 3. Having a special needs child is emotionally, physically and financially draining, but it is also the most rewarding experience. We drew strength and courage from Larsen, we learned from her and we developed lasting friendships with her physicians, nurses and speech and physical therapists. Every day we try to embrace life and "live like Larsen."



Ellis is like any other child. We just have to add a few extra steps into our daily routine to make sure she stays healthy.

KRISTINA CALLAN QUESADA, Arizona Alpha

My husband and I were blessed with our beautiful daughter, Ellis Rose, on October 25, 2010. It has now become common practice for babies to go through a newborn screening to test for genetic illnesses. To our surprise, at 10 days old, Ellis was diagnosed with Cystic Fibrosis.

In the United States, approximately 30,000 people are affected by Cystic Fibrosis (also known as CF) — and Ellis happens to be one of them. In people with CF, the body produces unusually thick, sticky mucus clogging the lungs and may cause digestive problems. Today, the average age expectancy is 37 years old.

There are many challenges when it comes to raising an infant with CF. In order to prevent buildup in Ellis' lungs, she goes through 20 minutes of physical therapy twice a day

to “pound” the mucus out of her system. Also, every time Ellis eats, we break up pills into her food to help her pancreas absorb the nutrients of what she is eating. Ellis takes around 15 to 20 pills every day. At first, it was a struggle to get used to this new way of life, but after a couple of months, it became our norm. To us, Ellis is like any other child. We just have to add a few extra steps into our daily routine to make sure she stays healthy.

My Pi Phi sisters have been overwhelmingly supportive since Ellis was diagnosed. These amazing women reached out to me with phone calls, hand-written letters, emails and Facebook messages with encouraging words for my family and me. They also expressed how they want to be involved in raising funds for the Cystic Fibrosis Foundation. Although many of us no longer live in the same city, my sisters donated their time and energy to help my family raise funds for the foundation's annual walk, Great Strides. Last year, Team Ellis Rose brought in more than \$13,000!

My Pi Phi sisters have also been there to celebrate the good times, whether it is a sweet gift in the mail for Ellis' first birthday or celebrating CF research advancements with phone calls cheering on Team Ellis Rose. It is so wonderful to know my sisters are always thinking about Ellis. Having them show their support during the good times and bad is truly irreplaceable.

Raising a child with special needs reminds me to always count my blessings and appreciate what I have in life. Every day is a gift, and it is important to be thankful for the time we all have together. Ellis has opened my eyes to a world where giving, caring and enjoying every moment are all that really matter.



LESLIE DUVALL KANTOR, Washington Gamma

When our daughter, Taylor, was born, the pediatrician told us there might be something wrong, as it appeared she had low muscle tone. After exhaustive tests, we discovered Taylor had a rare chromosome disorder — only 60 known cases in the world — and no one knew her future.

How could that be? My husband, David, and I were both only 24 years old. David was a health nut who did not eat sugar, drink caffeine or alcohol and went to the gym five days a week. I followed every step of the doctor's advice, and I ate what I was recommended. Two happy-go-lucky college sweethearts who never faced a serious challenge were now forced to be ferocious advocates for their daughter.

After many years of struggling with Taylor's health, we were introduced to a new physician. Upon examining Taylor, he explained she would continue to get pneumonia while living in the Pacific Northwest and build up scar tissue until nothing could be done. The solution? He told us to move to the desert. I called the realtor on the car ride home. We moved our family to California and found dry air and sunshine were the best things for Taylor's health — and weren't too bad for the rest of us, either.

Through the trials, tears and frustrations, we learned a lot about life. When Taylor was 4 years old, we started a charity called "Bids for Kids" to benefit the children's therapy department at the Mary Bridge Children's Hospital in Tacoma, Washington. "Bids for Kids" has raised more than \$1 million dollars and is now led by an amazing group of women, The Jean Cunningham Orthopedic Guild.

Over the years, many friends and family have supported us. My best friend from college and Pi Phi sister, Washington Gamma MARYLOU HILL FERRY, has been with us every step of the journey. Many of my other Pi Phi sisters live in different states, but I continue to keep in touch and inform them of Taylor's health.



This winter, our family — my husband and our three other daughters, California Epsilon TATUM KANTOR, Jayda and Tiffany — and many of our friends celebrated Taylor's 24th birthday. It's amazing to discover the things you learn from a child who cannot walk or speak. Taylor has been our teacher, our comfort, our joy and our sorrow. And, most of all, we have learned to trust our instincts when it comes to raising a daughter with special needs. There is no handbook, and each parent must forge his or her own path. To every parent who is given one of these very special people, you do have the strength and the knowledge to do what's right. People often say we're amazing for what we do with Taylor. We simply do what needs to be done, and if faced with a similar situation, you could too.

It's amazing to discover the things you learn from a child who cannot walk or speak.

ELIZABETH BOSCHINI, Virginia Eta

I am a speech-language pathologist, and I am passionate about giving children with hearing loss the chance to listen and talk. I have written two children's books featuring children with hearing loss who listen and talk with the help of cochlear implants.

My experiences as a Pi Phi play a huge part of what I do today. The Fraternity's commitment to literacy is one of the reasons I decided to pledge Pi Phi, and every day I have the privilege of helping children with hearing loss experience the world through books. I am on a mission to show the world anything is possible for children who are deaf or hard of hearing.

When my books were published, my Virginia Eta sisters were among the first to support me, sending words of love from across the country — and even across the globe! The books, "Ellie's Ears" and "Happy Birthday to My Ears," help give children with hearing loss positive role models in



literature, something that is sorely lacking in mainstream children's books. The book's illustrator, Rachel Chaikof (herself a bilateral cochlear implant user), and I have committed to donating all proceeds from the books to nonprofits supporting children with disabilities.

My work with children with hearing loss has also taken me around the world, helping to lobby for universal newborn hearing screening in Costa Rica and train teachers of the deaf in the Dominican Republic. Most recently, I have been involved in lobbying efforts in Indiana leading to the creation of an unbiased resource center for children with hearing loss and their parents.

Pi Beta Phi gave me friendship, self-confidence and leadership opportunities at a crucial point in my life. Through my website, www.cochlearimplantonline.com, and my books, I reach people from around the world each month with a message of hope, support and possibilities for children with hearing loss.



I am on a mission to show the world anything is possible for children who are deaf or hard of hearing.

“We focus on his quality of life and what he can achieve: Kent has an amazing memory, incredible organizational skills and a wonderful sense of humor.”

BETH ALDERTON ERNSBERGER, *Indiana Gamma*

Within minutes of the birth of my brother, Robert Kent Alderton, the doctors announced to my parents he had been born with Down syndrome: a congenital condition, caused by the presence of an extra chromosome in his DNA, characterized by moderate to severe mental retardation, upward slanting eyes, a broad short skull and broad hands with short fingers.

I remember my dad waking me up to tell me Kent had been born, and he had Down syndrome. At 5 years old, I had no idea what that meant. I just remember thinking what a beautiful baby my brother was. He was absolutely adorable in my eyes. The impact of his diagnosis wouldn't come until a few years later when I volunteered at a Special Olympics track meet. That day, I came to realize the extra chromosome Kent had would impact his entire life.

My mother enrolled Kent in educational and therapeutic sessions from the time he was 8 weeks old. Because he started therapy at such a young age, Kent became the first child with Down syndrome mainstreamed into a kindergarten class in South Bend, Indiana, when he was just 5 years old.

For me, the heart-wrenching part of Kent's disability is that he is keenly aware of it. He is too bright to push a broom all day, but using a calculator or a keyboard, or reading a book, are above his ability level. That's what I call being stuck between a rock and a hard place.

We focus on his quality of life and what he can achieve: Kent has an amazing memory, incredible organizational skills and a wonderful sense of humor. He does a great Michael Jackson impersonation and is always the first on the dance floor and the last one to leave. He's given our family

opportunities we otherwise would not have had, and we've met so many amazing people.

In college, all my Pi Phi sisters knew Kent and loved him. Some women even joined me at Special Olympics events. And now, though we don't see each other frequently, my Pi Phi sisters still play a significant role in my life. When we are together, time melts away. There is a love, admiration and bond that come from membership in Pi Phi, which is unlike any other experience.

My mother died a few years ago, and Kent has since come to live with my husband, our three children and me. There are learning curves and territory wars we have to get through, like any family. But despite the full house, I am thankful for Kent's presence in my children's lives. It's my hope he will help teach them the importance of acceptance. ↪



Literacy Historical Spotlight

ARROW IN THE ARCTIC A PI PHI FIRST

by Director Philanthropy ANN CRIGGER SHAW, Arkansas Alpha

Pi Beta Phi has had a significant presence in Canada since 1908, when Ontario Alpha was installed as the first Canadian chapter. Since then, Canadian Pi Phis have shared the Fraternity's philanthropic endeavors and sincere friendship with their countrymen. Today, Pi Phi has four collegiate chapters and five alumnae organizations across Canada, and also boasts its own Canadian philanthropy, Arrow in the Arctic.

At the 1967 Chicago Convention, Pi Phi Canadian delegates voted unanimously to adopt the Northern Libraries Project to commemorate the 100th anniversary of both the Fraternity and the Canadian Confederations. Pi Beta Phi is the first —



Since 1967, Arrow in the Arctic has provided new books for libraries in the Yukon, Northwest and Nunavut territories in Canada.

and to date, only — National Panhellenic Conference organization to create a Canadian philanthropy project.

In the Winter 1967 *Arrow*, the Ontario Beta Chapter at the University of Western Ontario reported the project, “had as its goal the betterment of the Canadian nation as a whole, for Pi Phi recognizes it is through such altruistic programs that standards of living can be heightened.” By the time convention had convened, the initial donations totaled \$2,200 and were used to purchase reference books for a library in Inuvik, located in the Northwest Territories.

Manitoba Alpha RUBY WHITE TRAILL was called to serve as the first chairman of the Northern Libraries Project. The project became known as “Arrow in the Arctic” in 1969.

Through the combined efforts of Canadian Pi Phis, monies were raised each year to provide new books for libraries located in the Yukon Territories and the Northwest Territories. Librarians used the funds to choose books according to the need in their area. Each book also contained a bookplate acknowledging the Pi Phi donors.

A Yukon newspaper, *The Whitehorse Star*, reported on the project's first anniversary in 1968: "A review of the year's activities gives ample proof of the popularity of the library and of the valuable service it is giving to Yukoners of all ages. With a stock of approximately 85,000 books, the library is now able to ship books to 55 outlets throughout the territory. This includes community libraries, school libraries, kindergartens and mining camps."

As Arrow in the Arctic donated to an increasing number of libraries, the Canadian Philanthropies Committee (CPC) — which the Fraternity had commissioned in 1957 — began managing the distribution of funds. Additionally, during 1977, CPC Chairman SUSAN REHSCHUH HAYES, Kansas Beta, supervised the development of an Arrow in the Arctic slide program. She traveled to several remote library locations to shoot photography, with assistance from the Pacific Western and Canadian Pacific Airlines. Susan was warmly received by library and government personnel familiar with Pi Beta Phi's assistance to the region. While photographing the far North, Susan was the first to record Arrow in the Arctic's impact in-person.

Because of its continued success, an Arrow in the Arctic logo design contest was held among chapters in 1978. Illinois Zeta PAT DUNN won the contest. She received an Inuit soapstone carving from the Canadian Government for her winning entry. In 1979, Arrow in the Arctic monies were used to purchase video equipment in the Yukon and to initiate a reading stimulation program using audiovisual materials in the Northwest Territories. In 1981, the reading stimulation program was expanded to 22 of the Northwest Territories' branch libraries.

From 2006–2007, Arrow in the Arctic funds were used to replace and upgrade books on native culture, history and languages in Atlin, British Columbia; purchase books and hand puppets of Arctic animals and birds for use in storytelling sessions for Northwest Territory libraries; and purchase books on Inuit culture and native traditions for Nunavut.

The CPC began its support of and collaboration with First Book® Canada in 2007. Today, the committee's efforts for First Book Canada continue under the leadership

of CPC Chairman MARILYN CLARK, Ontario Beta. All literacy initiatives in partnership with First Book Canada and all Arrow in the Arctic fundraising fall under the Fraternity's literacy platform, Read. Lead. Achieve.

By 2008, Arrow in the Arctic was serving 24 community libraries in or near the Arctic Circle. This year was also a milestone in the history of Pi Beta Phi, as it was the 40th anniversary of Arrow in the Arctic. To commemorate this occasion, a new Arrow in the Arctic logo was unveiled at the Vancouver, British Columbia, Alumnae Leadership Summit that year.

In 2010, the Canadian Philanthropies funds for Arrow in the Arctic were transferred from the stewardship of the Fraternity to Pi Beta Phi Foundation. With this change, the Foundation is better able to share the story of our Canadian philanthropic efforts, the need in the Arctic region and the impact Pi Phis have when they support this tradition.

All totaled, more than \$88,000 has been donated to 27 community libraries in the Yukon, Northwest Territories and Nunavut, the newest of the three territories added in 1999, since Arrow in the Arctic began. Pi Phi's contributions have enabled families to record their native histories as well as increase literacy.

Past Canadian Philanthropies Committee Chairman HELEN STEEVES JULL, Alberta Alpha, said, "We have no idea of how the ripples on the water widen the positive impact Arrow in the Arctic has had on so many people across the Northern Continent. Thank you Pi Phis for your support across the decades." ↪



All totaled, more than \$88,000 has been donated to 27 community libraries throughout Canada through Arrow in the Arctic fundraising.

Make Your Mark for Literacy – Online

Pi Beta Phi is excited to launch its new, interactive Read. Lead. Achieve. Facebook page. Share your literacy story by posting pictures, videos and starting discussions. You don't need a Facebook account to use the page; everyone can participate! Ready to post about your literacy event? Learn about the features of the site below.

1 How do I access the website?

Visit www.pibetaphiliteracystory.org to access the Facebook page. Or, visit www.facebook.com/pibetaphi and click the "Read. Lead. Achieve." icon at the top of the page.

2 What is Read. Lead. Achieve.?

Under the platform Read. Lead. Achieve., Pi Beta Phi will accomplish its 100-year literacy vision: Pi Beta Phi leads the way to a more literate society. Through Read. Lead. Achieve., Pi Beta Phi's philanthropic work will be rooted in friendship; be uniquely Pi Phi; make its impact locally; encourage reading; and allow members to give of time, talents and treasures.

3 How do I share my story?

Have you, your chapter or your alumnae organization recently participated in literacy service, such as Champions are Readers® (CAR) or Fraternity Day of Service? Are you planning an event and looking to recruit volunteers? Sharing your literacy story is easy!

Click "Share Yours" and create a title, write a paragraph describing the literacy service and upload a photo and/or video. Then, click "Submit" and your posting will be available for others to see after it has been approved.

2



Share Your Story



BOOKS DELIVERED TO FAMILY SHELTER

by Allpibetaphi21

20 comments

[read >](#)



ALUMNAE CLUB CELEBRATES FDS

by PibetaPhi4life

11 comments

[read >](#)



CHAPTER READS TO 1ST GRADERS

by lampiphi

7 comments

[read >](#)

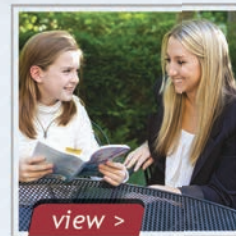
4

[MORE >](#)

3

[SHARE YOURS >](#)

Read. Lead. Achieve.



[view >](#)



[view >](#)

7

The *Literacy* Fund
PI BETA PHI FOUNDATION

This page is funded
Pi Beta Phi Founda

Champions are Readers® is a registered trademark of Pi Beta Phi Fraternity for Women.



5

Pi Phis in Action

the latest news from Pi Beta Phi

ONE HUNDRED YEARS OF LITERARY SERVICE: PI BETA PHI SETTLEMENT SCHOOL

As we celebrate 100 years of literacy service, Pi Beta Phi Historian ...

NYU PI PHI'S PASSION FOR SERVICE INSPIRES TRIP TO GHANA

I have been passionate about community service since elementary school ...

[SHARE >](#)

6

Read. Lead. Achieve. Scrapbook



[play >](#)

[MORE >](#)

in part by The Literacy Fund at Pi Beta Phi Foundation. Support [The Literacy Fund](#) today.



4

How do I read others' literacy stories?

Click "More" to read about what other chapters and alumnae organizations are doing for their literacy service. You can leave a comment to give positive feedback or ask questions. The page is a great way to get ideas for your literacy service and learn about what others are doing in their communities.

5

What is Pi Phis in action?

Pi Phis in Action displays the latest posts from the Pi Beta Phi blog. Click "Learn More" to access www.pibetaphiblog.org, and read about what Pi Phis are doing.

Do you have a story you want to share on the Pi Phi blog? Are you interested in writing a guest post? Email your story and photos to socialmedia@pibetaphi.org.

6

What is the Read. Lead. Achieve. scrapbook?

Click on the photo thumbnails or click "More" to view photos and videos uploaded by chapters, alumnae organizations and Headquarters staff. Click "Share Yours" to upload a photo or video to the Scrapbook — no writing required.

The Fraternity's new Read. Lead. Achieve. video, the fifth and final in our Legacy of Literacy video series, is available here. You can also view the video via the Fraternity's YouTube channel at www.youtube.com/pibetaphihq.

7

What is The Literacy Fund?

All financial support for Pi Phi literacy efforts come together under The Literacy Fund at Pi Beta Phi Foundation. The Literacy Fund enables our membership of more than 140,000 women to come together to promote literacy in a strategic, cohesive way. Click "Support The Literacy Fund today" to make a gift and help support Read. Lead. Achieve. initiatives, including First Book, Champions are Readers, Arrow in the Arctic and more.

Meet the Carolyn Helman Lichtenberg Crest Award Winners



First presented in 1991, this award honors Ohio Alpha CAROLYN HELMAN LICHTENBERG, who served the Fraternity as Grand President from 1985 to 1991. Recipients are distinguished alumnae who exhibit excellence and outstanding leadership in their career or volunteer service to their communities.

Carolyn Helman Lichtenberg Crest Award for Community Service



HILARIE HEFTON BLANEY
Oklahoma City
Oklahoma Alpha
University of Oklahoma

HILARIE HEFTON BLANEY's volunteer and professional endeavors are motivated by her passion to educate others. Calling upon 33 years of experience in banking, Hilarie teaches professional etiquette to individuals and businesses, including speaking engagements with the Oklahoma City Chamber of Commerce and U.S. Congressman Dan Boren. Hilarie is a founding member of Impact Oklahoma, Inc., which raises awareness for Oklahoma nonprofit organizations and funds those groups in the areas of family, culture, health and education. In the last eight years, Impact Oklahoma has raised more than \$1.7 million to support philanthropic efforts. Closest to Hilarie's heart is her lifelong commitment to literacy. She has spent eight years as an Advisory Board member for the Community Literacy Center, which helps adults learn to read. To honor her positive change in the Oklahoma City community, Hilarie won a prestigious Paragon Award from Leadership Oklahoma City in 2005. She also serves as a board member for Integris Baptist Medical Center Foundation, a trustee for the Family Health Foundation of Oklahoma and a trustee for the Oklahoma Student Loan Authority.



CLARE BUIE CHANEY
Dallas
Texas Alpha
University of Texas

CLARE BUIE CHANEY has positively impacted thousands of people through her personal story of cancer survival. Overcoming her battle with cancer led to a professional career counseling cancer patients and their families. Clare has served in leadership roles for Camp Esperanza, a summer camp for children who currently have, or have been treated for cancer, the American Cancer Society and the Leukemia and Lymphoma Society of North Texas. She is the co-founder of Link to Life, which recruits unrelated bone marrow donors, and Circle of Life, which builds donor awareness for Dallas hospitals. Clare is also a member of the Texas Cancer Council, a role appointed by then-Governor George W. Bush. Clare has also donated countless hours and fundraising efforts to enhance the arts in Dallas. She has served as President of The 500, Inc. and Shakespeare Dallas. She is a founding member of the former Dallas Arts District Friends and the City of Dallas Cultural Affairs Commission citizen board. In addition, Clare has served on boards for Dallas Theater Center and Dallas Summer Musicals. In partnership with the League of Women Voters, Clare helped raise money for two historical markers honoring the roles of Dallas women in securing the right to vote and the right to serve on juries.



MARY THORSON GULLIKSON
Loveland, Colorado
Wyoming Alpha
University of Wyoming

MARY THORSON GULLIKSON alleviates nutritional and health problems in her community through her leadership and fundraising efforts. Mary has served on several health care boards, including the McKee Medical Center Foundation and Advisory Boards, the American Hospital Association Governing Council and the Colorado Hospital Association Board of Trustees. In 1988, Mary became the first female board member in 50 years for the Lutheran Health System Corporate Board in Fargo, North Dakota (now Banner Health System, a nonprofit health care provider). In these roles, Mary has raised funds for new equipment and offices, in particular raising more than \$18,000 for the first dedicated mammography unit at McKee Medical Center. Mary has worked extensively with the Larimer County, Colorado, Chapter of the American Cancer Society, including serving as Chair of the organization's Residential Crusade campaigns in the mid-1990s. Mary has volunteered as campaign worker and organizer for numerous Colorado state senators, representatives and governors and as Republican delegate to County and State assemblies, which make party recommendations to candidates. She has also served her alma mater as a member of the University of Wyoming Alumni Association Board of Directors, including co-chairing a \$15 million College of Health Sciences building campaign.

Carolyn Helman Lichtenberg Crest Award for Professional Achievement



LESLIE ARMSTRONG ANIDO
San Jose, California
California Epsilon
San Diego State University

LESLIE ARMSTRONG ANIDO has provided special needs students with extraordinary and life-changing educational experiences for more than 30 years. She successfully integrates students with severe physical and medical needs into mainstream classes through team teaching and adapting curriculum to meet diverse physical, visual and hearing needs. Leslie's classroom incorporates assistive technologies, like computer programs or "talkers" (machines that vocalize typed words) to help students with academic studies. Additionally, Leslie organizes field trips for her students, even though many are dependent on wheelchairs or walkers, throughout San Jose. Field trips include visits to museums, hiking trails and even the San Francisco Zoo and the California State Capitol in Sacramento. In honor of her pioneering teaching methods and sheer determination, Leslie received the Santa Clara County Office of Education Teacher of the Year award in 2005. She has been a guest lecturer at numerous universities, presented at paraeducator workshops and mentored new and struggling teachers. After applying for, and receiving, many educational grants over the years, Leslie founded the Active Participation in Learning Experiences (APLE) Foundation. APLE provides students with orthopedic impairments the opportunity to expand their learning outside the classroom. This includes funding specialized transportation, recruiting volunteers to assist with logistics and more.



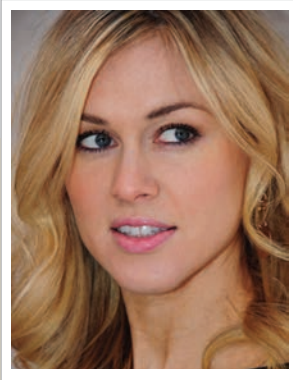
FRAN WATSON BIGELOW
Seattle
Washington Alpha
University of Washington

FRAN WATSON BIGELOW is the founder and owner of Fran's Chocolates, a premier chocolate boutique. Fran's handcrafted chocolates have been praised by the Food Network, *Saveur* magazine, *Food & Wine* magazine and are rumored to be a favorite treat of President Barack Obama. Food critics have swooned over her signature Smoked Salt Caramels, made with soft, buttery caramel and Belgian milk chocolate. Fran enrolled in the California Culinary Academy in San Francisco after deciding a career as an accountant wasn't for her. She opened her first pastry shop in 1982, which has since grown into a multi-million dollar business with three Seattle locations, an online business and elite retail partners. In 2004, Fran published her first cookbook, "Pure Chocolate: Divine Desserts and Sweets from the Creator of Fran's Chocolates." Today, Fran's Chocolates makes more than 30,000 pieces of chocolate in one day and every chocolate is made in small batches with organic, locally grown ingredients. Because of her use of high-quality ingredients and her artistic touch, Fran has been called an artisanal-chocolate pioneer and is credited for sparking the artisanal chocolate renaissance in the United States.



MARTHA KAISER JUSTICE
Houston
Texas Gamma
Texas Tech University

MARTHA KAISER JUSTICE used her sales, public relations and marketing expertise to manage her family-owned printing business for nearly 20 years. Established in 1925 by her parents, Martha grew The Premier Company, now PremierIMS, Inc., into an award-winning direct mailing and printing firm. The company won the Houston Better Business Bureau Award for Quality, Award for Excellence and the Spirit of Texas Award. The Baylor University Hankamer School of Business named the company a Texas Family Business of the Year in the areas of community commitment and management. Martha also edited, wrote and designed the company's newsletter, *New Momentum*, to provide tips for marketing professionals seeking to expand their businesses. The newsletter received recognition from the Houston chapters of the American Marketing Association and the Business Marketing Association. Martha has served on the Board of Directors for Goodwill Industries of Houston and DePelchin Children's Center, which provides mental health care, foster care and adoption services. Martha also has served as an officer for the Houston Alumnae Club, including Communications Chair, Vice President and President. The year of her presidency, the club sponsored a fashion show and luncheon that raised \$75,000 for Texas Children's Hospital Pi Beta Phi Library.



DEIRDRE ROBERTS LORENZ
New York
Oregon Alpha
University of Oregon

DEIRDRE ROBERTS LORENZ is an actress, producer and writer who has appeared on award-winning shows like “The Sopranos” and “Law and Order: SVU,” and in print and runway work for designers like Calvin Klein, Ralph Lauren and Victoria’s Secret. Deirdre started the independent film company Thira Films, LLC., and co-wrote, produced and starred in the feature film “Santorini Blue.” The film has been an official selection at film festivals across the United States, including the Hoboken International Film Festival, Breckenridge Festival of Film and the Downtown Boca Film Festival. “Santorini Blue” has won several audience choice awards, and Deirdre received the Best New Producer of a Feature Film Award for her work. As part of the Screen Actors Guild BookPALS (Performing Artists for Literacy in Schools) program, Deirdre reads to children in New York City public schools and hospitals. She also works with Scenarios USA, a nonprofit that uses writing and filmmaking to foster youth leadership, advocacy and self-expression in under-served teens. Deirdre is an active member of the New York City–Manhattan Alumnae Club and has built a network of trusted and loyal professionals in the acting and filmmaking industries.



LINDA MURPHY MARSHALL
Columbia, Maryland
Colorado Beta
University of Denver

LINDA MURPHY MARSHALL’s language career spans the fields of translation, interpretation and government language analysis. Linda has formally studied 14 languages and worked with more than 20, including Spanish, Portuguese, French, Russian, German and the African languages of Swahili, Sotho, Amharic, Xhosa and Shona. Her career is inspired by her experiences at the University of Madrid, where she studied her junior year of college. She earned her master’s degree in Spanish and her doctorate in Hispanic languages and literature, and was elected to Phi Beta Kappa, the nation’s oldest academic honor society. In addition, she completed half of a second Ph.D. in comparative literature (working with French, German and Russian). As a multi-lingual language analyst with the Department of Defense, Linda was on a team accompanying former President and Mrs. George W. Bush and former Secretary of State Condoleezza Rice during their 2008 trip to Tanzania. She also worked extensively supporting the State Department in Africa during multiple crises, including the 1994 repeal of Apartheid in South Africa, the 1998 bombing of the U.S. Embassy in Kenya, and the Democratic Republic of the Congo civil war in 1999. She also directly supported the U.S. Ambassador during the 1990 coup attempt in Zambia. Her work with the Department of Defense also included creating intelligence reports for use by national policymakers, briefing senior officials and creating and teaching foreign language courses at the National Cryptologic School. Today, Linda is a Senior Research Scientist at the University of Maryland Center for Advanced Study of Language/CASL, where she works with government and academic clientele. ↪

\$10,000 Grants Given to Two Tuscaloosa Schools

It's been nearly one year since the April 27 tornado tore through Tuscaloosa, Alabama, but its scars on the town remain visible. Holt Elementary School, where members of the Alabama Beta Chapter read with third-graders each year, is operating out of a previously unoccupied school property across town, as many of its buildings are still undergoing repairs.



The damage, and resulting move, didn't deter the Alabama Beta Chapter from continuing their literary service at Holt Elementary this school year. After all, the women have built a strong relationship with the school over the past three years by hosting an annual Champions are Readers® (CAR) program with Holt third-graders. So when the Pi Phi women heard the school had been affected by the tornado, they quickly put together a plan to help bring brand-new books to the school.

Alabama Beta TATUM DENSON, past Vice President of Philanthropy, joined many University of Alabama students in cleaning up Tuscaloosa homes and

businesses in the weeks after the tornado, even after the University canceled finals and ended the school year early. After driving past the damage at Holt Elementary, which had been converted into a base for local National Guard relief efforts, she became keenly aware of the school's need. "We wanted to do something great for them," Tatum said.

With the support of the Alabama Beta Alumnae Advisory Committee, Tatum worked with Pi Beta Phi Headquarters to secure a \$10,000 grant from First Book to purchase new books for Holt Elementary. A second \$10,000 grant was presented to nearby University Place Elementary School, which also experienced extensive tornado damage.

"We were amazed and so thankful when Pi Beta Phi and First Book told us they could give grants to the schools," Tatum said.

Over the summer, Pi Beta Phi Headquarters worked behind the scenes with First Book to set up each of the \$10,000 grants. The funds were administered through The Literacy Fund at Pi Beta Phi Foundation, which were then translated into First Book Marketplace credits for the schools to access online. Through the Marketplace, Holt and University Place Elementary schools could purchase brand-new, high-quality children's books and educational materials at deeply reduced prices.

"The children were so excited to receive the new books and could hardly wait to look through them," said Holt Elementary Librarian Carole Huffman. "It's very kind of Pi Phi to give us a grant, and we are very grateful to you all."

Much of the grant was used to purchase books for classrooms at Holt, either for in-classroom libraries or for students to take home. Carole said the teachers were "glad and surprised" to receive the books, and even more surprised at the sheer number of books Holt



Top: From left, Alabama Betas TATUM DENSON, MADISON LEE, RACHEL DRUMRIGHT and MARY HERNDON presented a check to Holt Elementary students and teachers.

Bottom: Alabama Beta RACHEL ISOM dressed up as "Thing 1" for the chapter's CAR pep rally at Holt Elementary School.

was able to secure through the First Book Marketplace. In fact, it took nearly six months for the school to use the \$10,000 allowance.

“We were blown away,” said Holt Elementary Principal Debbie Crawford. “We have been so blessed by the amount of outpouring and caring we’ve received since the tornado.”

The Alabama Beta Chapter celebrated the grant at its CAR pep rally this past fall by presenting a large check — printed with the Holt mascot and Pi Beta Phi’s Greek letters — to the teachers and students. Also at the pep rally, students received CAR recognition medals, pink lemonade and pink frosted arrow-shaped cookies, and cheered on their teachers during a First Book Speed Read™.

“It’s an awesome thing to be a part of, because the grant is not just a one time thing, but affects future Holt students,” said Alabama Beta Chapter President RACHEL DRUMRIGHT. “All the students are energetic about reading and learning, which I can see just from going to the classrooms and reading with them once a week.”

Though the tornado caused extensive damage to Tuscaloosa, the community has since become stronger through its support of each other. For the women of the Alabama Beta Chapter,



Members of the Alabama Beta Chapter at the University of Alabama hosted a Champions are Readers pep rally at Holt Elementary.

their relationship with the students of Holt Elementary now has a deeper meaning because they can see firsthand the impact of their literacy service.

“It’s pretty hard to walk into the school and not be excited about what we’re doing because the students are so excited,” Rachel said. “Their hands shoot up, and they jump up and down to be the first to read with the Pi Phis. It makes you feel like a million bucks.” ↩

Missouri Alpha Pi Phis Bring 1,600 Books to Joplin, Missouri, Elementary Schools

In March, members of the Missouri Alpha Chapter at the University of Missouri traveled to Joplin, Missouri, to donate more than 1,600 children’s books to three elementary schools. During their visit, the women toured classrooms and spent time reading, talking and playing with students.

“It was refreshing to see how happy the children were, especially after all they’ve been through,” said Missouri Alpha Vice President of Philanthropy JORDAN DENKER. “We take getting a new book for granted, but they were so excited to get such a small thing.”

The Pi Phis also received a warm welcome from staff. “The teachers were surprised, even nine months after the tornado, people who don’t know them are still thinking of them,” Jordan said. “They were so thankful.”



The Missouri Alpha Chapter collected and donated more than 1,600 books for three Joplin elementary schools. The EF-5 tornado that ripped through the town last May is one of the deadliest storms in history.

Welcome to Georgia Alpha

Any visitor to the Georgia Alpha Chapter house at the University of Georgia is drawn to the historic nature of the building. The house was built in 1878 and was originally owned by a prominent Georgian family. The chapter purchased the house in 1939, and it has since been called “home” by generations of Pi Phis. Many of the women currently living in the house are in the same rooms their mothers once occupied when they were in college.

Though the house has had two major renovations — two wings were added in 1968, and several rooms were updated this past summer — the architecture and design have stayed true to the original style. Today, the house is approximately 18,000 square feet and houses 58 women.

The exterior features four large pillars, an inviting front porch with white rocking chairs and a swing in the side yard. The first floor includes a dining room, living room, full

kitchen, TV room and card room. The welcoming main foyer displays an arrow chandelier.

Upstairs are bedrooms housing two, three, four or five women. Several members of the chapter’s Executive Council live in lofted bedrooms. The women spend time in the common areas throughout the house studying, watching movies and socializing.

The Georgia Alpha Chapter House Corporation oversaw recent renovations to the laundry room and bathrooms, including making the public guest bathroom wheelchair accessible. A suite was also built for the House Director, complete with a personal entrance.

This past spring, the women welcomed a newly founded parents’ club, which decorates the house for holidays. The women love living in the house and are grateful for the volunteers and alumnae who help make it a beautiful home.

○ The Georgia Alpha Chapter house



○ Entryway



○ Living Room



○ TV Room

Congratulations FHC Photo Contest Winners

The Fraternity Housing Corporation (FHC) recently searched for the best-decorated Pi Phi collegiate bedrooms. Any woman living in a Pi Phi designated chapter house, lodge or residence hall could submit a photo of her room. The first-place winner and runner-up received gift certificates to Pi Phi Express. Thank you to all who entered — the decision was certainly a difficult one, but we think our winners are very deserving.



First-place: TAYLOR VASSIOS and CHESA TREVINO
Georgia Alpha, University of Georgia



When FHC saw the bedroom of Georgia Alphas CHESA TREVINO and TAYLOR VASSIOS at the University of Georgia, they knew it was an instant winner. This cozy and chic room features chandelier lighting, hand-painted wall murals, loads of color and tons of personal touches, which transform this typical bedroom into a fabulous home away from home.

“Chesa and I have thoroughly enjoyed our shabby-chic inspired room décor,” Taylor said. “And, more importantly, we have enjoyed our great in-house experience with our sisters this year. I personally can say 886 South Milledge Avenue is ‘Heaven on Earth.’”



Runner-up: KAITLIN KIRBY and TAYLOR WOODLEY
Oklahoma Alpha, University of Oklahoma



FHC loved how Oklahoma Alphas KAITLIN KIRBY and TAYLOR WOODLEY at the University of Oklahoma, opted for an antique atmosphere in their bedroom. Their room is the perfect place to either kick back and relax or burn the midnight oil studying.

“We designed our room to feel as much like home as possible,” Kaitlin said. “Our room is described as ‘cozy,’ thanks to our homemade wall decorations and our hand-me-down accents, such as birdcages and old frames. We’ve also added gifts given to each of us by our big sis, such as angel wings, to make our room more personalized.” ↪

Collegiate Spotlight

Growing up in a Phoenix suburb, California Alpha KAITLIN LANG never saw poverty with her own eyes. But during a trip to India, 14-year-old Kaitlin's perspective changed after she spent 10 days volunteering at an orphanage. When she returned home, Kaitlin assembled her friends and started a nonprofit organization to instill a philanthropic spirit among her school-age peers.



California Alpha KAITLIN LANG

"It was the first time I'd seen anything outside of a white picket fence and green grass way of life," Kaitlin remembers. "Though the children in India were raised differently than me, I saw we're all very similar and have the same basic needs."

Compassionate Kids Helping Kids was officially founded as a 501(c)(3) by Kaitlin and 10 other elementary and middle school students in January 2008. The organization has one simple goal: caring for the world, one kid at a time.

Under Kaitlin's guidance, the students began meeting each month to learn about children in countries around the world. From watching videos to presentations led by members, the students were excited to get involved. Other meetings were spent making bookmarks for the Phoenix Children's Hospital or participating in service events, like putting on a water and sport field day at a local children's shelter.

"Since many of our members were younger — fourth, fifth and sixth-grade — Compassionate Kids was their first philanthropy-related experience," Kaitlin said. "It was great to see them get really enthusiastic about our organization."

Following several successful events, the group discussed finding one project on which to focus their efforts. They



Compassionate Kids Helping Kids, a nonprofit organization started by California Alpha KAITLIN LANG, holds an annual children's shoe drive.

decided to host an athletic shoe drive; they would collect new or gently used sneakers at their schools and at local Phoenix businesses. The first drive lasted two weeks and collected a couple hundred pairs of shoes, which were then shipped to the orphanage in India where Kaitlin had volunteered.

Four years later, Compassionate Kids has collected more than 3,600 pairs of shoes through their annual drives. The shoes are now sent abroad to orphanages in India, Uganda and Mexico City. And each pair of shoes — tagged with a Compassionate Kids sticker and placed in its own box — is shipped for free, via a FedEx® international sponsorship.

Though Kaitlin is currently finishing her sophomore year at Stanford University, she still helps lead the Phoenix-based nonprofit. An executive board, made up of many of the students who helped Kaitlin start Compassionate Kids, and who are now high schoolers, oversee the day-to-day leadership responsibilities. Kaitlin attends meetings when she's home, including always attending the shoe drive kickoff event.

"What keeps me involved is seeing how my friends have become leaders in the past few years," Kaitlin said. "They've developed from elementary school children who didn't know about leadership into articulate, compassionate individuals."

In the future, Kaitlin hopes to merge her two passions: Compassionate Kids and Pi Phi. She would like to bring awareness to the group, through potential co-sponsorships of a California Alpha philanthropy event or recruiting her Pi Phi sisters to help start a Compassionate Kids chapter at Stanford or at a local Palo Alto, California, school.

"There are a lot of amazing organizations out there, but Compassionate Kids is so nice because we've become a family," Kaitlin said. "I never thought in my wildest dreams we could come together and make an impact."

CALIFORNIA

Four California Deltas from the University of California, Los Angeles, spent their winter break volunteering with a medical program in Costa Rica. The women helped set up clinics in two underprivileged communities, helping diagnose and prescribe medicines to villagers. Their dedication to service has inspired their chapter to find new and creative ways to volunteer. From left, ELIZABETH BRANCO, SABRINA DOMICOLI, KAITLIN MCCLURE and KAITLIN O'ROURKE received drawings from their patients.



California Gamma LOGAN LACHMAN serves as the University of Southern California's (USC) Undergraduate Student Government Vice President. During her term, Logan has been an advocate for the Greek community, including helping pass an initiative to repave the roads along the campus' Greek row. From left, USC President C.L. Max Nikias, Logan and Undergraduate Student Government President Monish Tyagi.



CONNECTICUT

Members of the Connecticut Gamma Chapter, which colonized this past fall at Quinnipiac University, enjoy the leadership opportunities available through Pi Phi. The chapter's first Executive Council, pictured, draws upon their skills learned from other student organizations to lead the new chapter. The women recently updated their chapter website and completed spring recruitment.



IOWA

In January, Iowa Gammas participated in Iowa State University's Dance Marathon. Pi Phis stayed on their feet for 15 hours and were named the top fundraising sorority for raising more than \$17,000. This year's Dance Marathon co-director Iowa Gamma SZUYIN LEOW followed the leadership of her Pi Phi sisters; several Iowa Gammas helped start the event in 1998. From left, TAMARA DUNHAM, SZUYIN LEOW and AMY PEYTON.



MAINE

Maine Alpha MARLENE THONGSAVATH serves others through the University of Maine Black Bear Mentoring Program. The University established the program to enrich the lives of children from disadvantaged households. Marlene loves being a mentor, because she can be a positive role model for children in her community.



MISSISSIPPI

This past fall, the Mississippi Alpha Chapter at the University of Southern Mississippi collected and donated more than 1,000 children's books to four local elementary schools. The books were collected during the chapter's first dance-a-thon philanthropy event. From left, CANDACE LEWIS, ZOIE ARNOLD and CHELSEA BARNETT distributed the books to each school and were honored to promote literacy within their community.



MINNESOTA

Many Minnesota Alphas hold prominent leadership roles within the Greek community at the University of Minnesota. Last year, Pi Phis represented half of the campus' Panhellenic Council. The women also made up one-quarter of the recruitment counselors. From left, ANGIE BEAUCHAMP, KATHERINE LAES, CAITLIN DAVISSON and EMILY SHOWERS helped guide and mentor Potential New Members during recruitment.



NORTH CAROLINA

Members of the North Carolina Beta Chapter are student leaders across Duke University's campus, from academic societies to sports captains to community service enthusiasts. North Carolina Beta ELLEN MOELLER serves as president of The Girls Club, which connects Duke women with Durham, North Carolina, middle schools girls to teach them the importance of education, healthy lifestyle choices and self-respect. Ellen is pictured with her mentee.



NEW YORK

New York Alpha COLLEEN BIDWELL witnesses personal and intellectual growth daily at Syracuse University.

Colleen works as Assistant Feature Editor for the Syracuse student newspaper, *The Daily Orange*. Her Pi Phi sisters support her passion, which include long nights editing, and inspire Colleen's work through their participation in campus philanthropies and fundraisers.



OHIO

Several Ohio Alphas from Ohio University attended a special ceremony honoring one of the chapter's distinguished alumna. The collegians were proud to help honor PATRICIA CONNOR STUDY with The Women in Philanthropy of Ohio University Leona Hughes Inspiration Award, given for lifelong dedication to service. From left, Ohio Alphas CASSIE RAGLAND, KAITLIN MCCANN, PATRICIA CONNOR STUDY and ANNIE RAYBURN.



OHIO

Members of the Ohio Zeta Chapter at Miami University worked together to recognize how the chapter best operates and share its visions for the future. The chapter's Executive Council, pictured, bonded during officer training through exercises, games and interactive activities. The women were inspired by their training and are excited to make a difference in their chapter, their campus and in their community.



TENNESSEE

Tennessee Deltas are leaders within their chapter, but also give their time to other University of Memphis organizations, including the University's philanthropy, "Up 'Til Dawn." Throughout the year, Pi Phis participate in car washes, dinners, silent auctions and a Grand Finale event to raise money for St. Jude Children's Research Hospital. From left, LIZ HARMEIER, AMANDA COLTER, HALIE STEPHENS and NATALIE THURMOND.



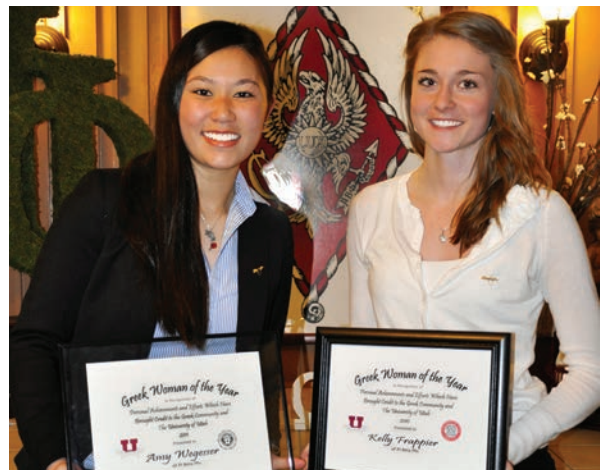
TEXAS

Several Texas Gammas are involved in President's Select, a prestigious group of student ambassadors at Texas Tech University. The women help foster relationships with special guests and university alumni. From back left, KAYLA PIERS, KAITLYN VINSON, LANEY CHRISTIAN, MINDY WILSON and BRITTANY JOHNSON. From front left, CHLO INMAN and KELSEY EUBANKS.



UTAH

Utah Alphas and best friends AMY WEGESSER (left) and KELLY FRAPPIER (right) share many things in common, including both winning the University of Utah's Outstanding Greek Woman of the Year award. The women maintain high grades, have served on Utah Alpha's Executive Council and are active volunteers in the Salt Lake City community, including positions with the Primary Children's Medical Center.



VIRGINIA

From left, Virginia Deltas RACHAEL ROUND, SARAH WELCH, MELISSA WOOD and MARIAH PABST attended a leadership institute sponsored by Old Dominion University. The women were nominated by their chapter to attend the event, which brought Greek leaders together to discuss challenges and successes and plan for the future.



IN HER WORDS



CHERYL CASONE
ARIZONA GAMMA

IN A NUTSHELL ... TELL US ABOUT YOU

I am an anchor for Fox Business Network and Host on the Fox News Channel. I love breaking down the complexity of financial news for our viewers. I currently live in Manhattan, and I am gearing up for my third triathlon.

PI PHI TAUGHT ME ...

"The value of friendship. I still see many of my Pi Phi sisters — and am lucky to have them in my life."

ADVICE FOR UP-AND-COMING PROFESSIONAL WOMEN ▶

LOOKING AT ME, NO ONE WOULD EVER GUESS ...

I am incredibly shy, and it takes me awhile to warm up to new people. Considering what I do for a living, no one believes me.

WHAT IS YOUR FAVORITE RAINY DAY ACTIVITY?

House cleaning — I am very organized.

BEST ADVICE YOU'VE EVER RECEIVED

Apply for jobs in places you want to live. Work will consume you, but you need to enjoy a small semblance of your life.

FAVORITE QUOTE

My friend Ellen always says, "Take care of you." But it's not in a selfish way. If you practice self-compassion and care, you will be a better friend, daughter, sister and employee.

WHAT PERSON DO YOU ADMIRE THE MOST?

Anyone who overcomes incredible adversity in their life and is able to call themselves a survivor.

FAVORITE WORD

Believe

Left Brained Right Brained

Heels Flats

iPhone Blackberry

a.m. coffee a.m. soda

Hours a week 40+ 50+ 60+

NEVER COMPROMISE
YOUR BELIEFS.

Collegians Make Coast-to-Coast Connections

The Fraternity put a new spin on Collegiate Leadership Academy this year by offering attendees the option to participate in one of three cities: Kansas City, Missouri; Atlanta; or Los Angeles.



From left, Kansas Beta ALLIE NIEDEREE, Texas Beta CHARLOTTE COOPER, Arkansas Alphas ALEX BODISHBAUGH and CULVER RANDOLPH, Texas Beta MORGAN RIKLIN and Kansas Beta ANNIE CLARK attended the emerging leaders track in Kansas City.

All 135 collegiate chapters were encouraged to send their Vice President of Membership, Vice President of Event Planning, emerging chapter leaders and Alumnae Advisory Committee (AAC) membership counterparts to a weekend-long seminar to gain a greater understanding of their roles as chapter leaders.

“We couldn’t be happier with the positive response from Leadership Academy participants,” said Shawn Eagleburger, Member Services and Programming Director, Headquarters. “More than 500 Pi Phis attended this year’s Leadership Academies. By offering these events three different weekends, in three different locations, we were able to reach more than twice as many collegians than in years past.”

A longtime wish of Pi Beta Phi’s membership team was to have a membership track included in Leadership Academy programming. This year, they got their wish. Vice Presidents of Membership and their AAC Advisors were coached through their role, from spirit week to membership selection to member satisfaction and retention. Participants were presented with tips and tricks as well as a few new processes and resources the Fraternity has developed to aid in the membership selection process.

“One concept I can’t wait to share with my chapter is restructuring recruitment conversations,” said Vice President of Membership BREEGAN O’CONNOR, Utah Alpha. “Instead of asking the basic questions, such as ‘Where did you go to high school?’ or ‘How’s recruitment going?’, I will encourage my chapter to ask questions that truly evaluate a Potential New Member’s values and how well they would abide by Pi Phi’s core values. I can’t wait to get an amazing group of women to carry on the legacy!”

PI BETA PHI
COAST TO
COAST
CONNECTIONS
2011-2013

The Event Planning track was an assortment of risk management tips, event planning best practices and bystander prevention education all rolled into one weekend. Participants were guided through two of the Fraternity's newest resources, the Event Planning and Management Guide and the "Is It a Pi Phi Party?" program, which help Vice Presidents of Event Planning educate their peers on how to host fun and safe social events. Throughout the program, facilitators took Q&A to ensure lingering questions were addressed.

"I didn't just learn one thing at Leadership Academy," said Vice President of Event Planning EMMA LANHAM, Colorado Gamma. "I learned so many helpful tips to better plan events for my chapter."

The Emerging Leaders track, lead by Pi Beta Phi's friends from The Leadership Institute – Women with Purpose, Inc., provided up-and-coming Pi Phi leaders with the tips and tools to lead authentically and confidently. By learning more about themselves through interactive workshops, each member defined leadership through practice and application. The 2012 Leadership Academies mark the first time Pi Phi has offered a program designed specifically for emerging collegiate leaders.

"I liked how they used different techniques to get information across," said Emerging Leader attendee RIANNAH HOLMBERG, Wyoming Alpha. "They kept the sessions active by playing games and showing videos, which really helped me stay focused and absorb more information."

Other weekend highlights included an in-depth look at the Fraternity's new literacy platform, Read. Lead. Achieve., during lunch on Saturday. The fifth and final Legacy of Literacy video, "The Legacy Continues," premiered. The video was followed by small group discussions of how chapters can incorporate literacy service activities into Read. Lead. Achieve.

"My chapter is trying to implement an annual philanthropy event," said Vice President of Event Planning KRISTYNA SMITH, Montana Alpha. "It was great to talk with other women about what they do with the Champions are Readers program and what other kind of service they do in their community."

During dinner Saturday evening, the Headquarters Marketing and Communications team hosted a session about the importance of protecting the Pi Phi brand through appropriate event T-shirts, social media, chapter websites and even member behavior.

Throughout the weekend, Pi Beta Phi Foundation Trustees, Foundation Ambassadors and staff were on hand to explain The Literacy Fund and its role in Read. Lead. Achieve., share information about the Foundation and sell tribute halos. Thanks to the generosity of Leadership Academy participants, the Foundation raised \$7,760 for undergraduate scholarships.

"The success of the 2012 Leadership Academies shows Pi Beta Phi's commitment to providing quality programming and leadership development for our collegiate women and their advisors," said Grand Vice President Programming JULIE CARNEY, Texas Beta. "We are excited the Foundation representatives could attend and are thrilled with the launch of the Emerging Leaders track for our new collegiate leaders." ↪



To view the fifth and final Legacy of Literacy video, "The Legacy Continues," visit www.youtube.com/pibetaphihq.

Paying it Forward

Oklahoma Beta HAYLEY ZIMMERMAN will bring energy and enthusiasm to her role as the new Pi Beta Phi Foundation Ambassador for Collegiate Region Six.



Oklahoma Beta HAYLEY ZIMMERMAN (left) is excited to serve as Foundation Ambassador for Collegiate Region Six. Hayley comes from a long line of Pi Phis, including her mother Oklahoma Beta MEGAN BLACK ZIMMERMAN (right).

As a freshman at Oklahoma State University, Hayley knew she wanted to become a member of the fraternity and sorority community. After all, Hayley comes from a long line of Pi Phis. Her mom, MEGAN BLACK ZIMMERMAN; aunt, CYNTHIA BLACK BRYANT; and grandmother, MARY LOU ARMSTRONG BLACK, are all Oklahoma Betas.

“Growing up, I learned how special Pi Phi was to my family,” Hayley said. “Pi Phi was a great way for them to meet people and be involved on campus, and it provided them with a support system of sisters all over the country.”

Though Hayley was a legacy, her mom assured her she didn’t need to feel pressure to join Pi Phi. She went into recruitment with an open mind, but felt drawn to the Pi Phi women.

“After that first day, I left the Pi Phi house eager to return the following day,” Hayley said. “The women in the chapter had a special bond, and I very much wanted to be a part of it.”

Hayley quickly became involved in her chapter. She served as a Censor and as Vice President of Communications before stepping into the role of Chapter President, a position her grandmother held almost 60 years before. As Chapter President, Hayley represented Oklahoma Beta at the 2009 Convention and helped the chapter celebrate its 90th anniversary. Hayley credits Pi Phi for helping her become the woman she is today.

“In my leadership roles, I took away valuable skills such as time management, delegation and public speaking,” Hayley said. “Pi Phi gave me confidence in myself and taught me how to be an effective leader.”

Now living in Dallas and working as a pricing analyst for a prominent airline, Hayley continues to give back to Pi Phi as a member of the Dallas Alumnae Club and as the newly appointed Foundation Ambassador for Collegiate Region Six. As a Foundation Ambassador, Hayley will facilitate Foundation communication and understanding with the chapters in her region.

“I love being able to interact with collegians and share with them everything the Foundation does for members, from scholarships to Emma Harper Turner grants to funding the leadership programming that I benefited from as an undergraduate,” said Hayley. “Pi Phi has given so much to me and my family, and serving as a Foundation Ambassador is my opportunity to pay it forward.”

To find the Foundation Ambassador for your region, visit www.pibetaphifoundation.org.

Ensuring the Future of Pi Beta Phi

Chapters show their support for Pi Beta Phi Foundation

Chapters are critically important to Pi Beta Phi Foundation, helping to ensure a stronger Pi Beta Phi for today and tomorrow. Chapters did an outstanding job in 2011, raising a total of \$472,761 in gifts — an average of \$29.36 per member.

The Foundation's Top 10 for 2011 is determined by total giving and includes Friendship Fund gifts along with gifts for scholarships, Emma Harper Turner Fund, The Literacy Fund and more. The Top 10 chapters receive a special celebration kit for their fundraising efforts.

Thank you collegians for your support of the Foundation, and congratulations to the Top 10 — you are leaders in Pi Phi!

PI BETA PHI FOUNDATION TOP 10 CHAPTERS

- | | |
|----------------------|------------------|
| 1. New York Delta* | \$360 per member |
| 2. Missouri Alpha* | \$229.92 |
| 3. Arkansas Alpha | \$106.67 |
| 4. Florida Delta | \$89.39 |
| 5. California Gamma | \$89.04 |
| 6. Mississippi Alpha | \$84.83 |
| 7. Tennessee Delta | \$78.04 |
| 8. Louisiana Beta | \$67.42 |
| 9. California Theta | \$58.39 |
| 10. Colorado Delta | \$51.59 |

*Indicates chapter established a new endowed scholarship.



Collegiate chapters raised \$472,761 for Pi Beta Phi Foundation in 2011. Chapter giving supports undergraduate scholarships, Emma Harper Turner Fund grants, The Literacy Fund and more.

Special Reception Welcomes Trustees to Dallas

In February, Pi Beta Phi Foundation hosted a reception in Dallas at the home of Texas Alpha JOAN FRENSLEY SMITH. The Board of Trustees mingled with Pi Phis of all ages, answering questions and discussing current initiatives of the Foundation. The growth in recent years of scholarships and Emma Harper Turner Fund grants, as well as the Foundation's rank as 9th among NPC Foundations, was a frequent topic of discussion for attendees. The reception was a great start to a two-day meeting, where Trustees evaluated strategic objectives and conducted an annual investment review.

The Foundation would like to thank Kansas Alpha SALLY RONEY HOGLUND and Oklahoma Alpha SALLY SEWELL WIGHTMAN for their assistance in planning the event. ↪



From left, Texas Beta collegians LEXI TOCCI and KIMBRELL HUGHES enjoyed spending time at the reception with Texas Epsilon PAULA MCPHERSON DAVIS and Foundation Trustee KAREN SULLEY THORN, Nebraska Beta.

Alumnae Spotlight

As a member of the class of 2009, which graduated into the worst economic climate in decades, Oklahoma Alpha LINDSAY VAN METER was thrilled to land a nursing job. Not just any job, but her dream job. Lindsay worked 9–5 Monday through Friday at a successful plastic surgery practice. She even had paid holidays and benefits.

However, after several months of working in the plastic surgery office, Lindsay began to feel conflicted in her day-to-day responsibilities.

“I realized we were altering women’s bodies every single day,” Lindsay said. “I needed some healthy conversation with empowered women to balance the extreme nature of my work.”

Lindsay gathered a few close friends and her mother for an evening of dinner and discussion focusing on women’s issues. After that first night, several women continued to meet and before long, the Denton Women’s Collective was born.

The women come together once a month to discuss their passions and ideas on a wide range of topics. The group is dedicated to uniting women through the shared hope of creating a more tolerant world, one offering equal opportunities, kindness, acceptance and love for all.

“Anyone can come to a meeting and discuss something that is important to them,” Lindsay said. During a meeting this past summer, the group shared stories about unhealthy female relationships, from interactions with popular girls in high school to conflicts with office co-workers. The women expressed their desire to deal with female issues, like bullying, and make a positive impact in the Denton, Texas, community.

One member suggested watching the documentary “Finding Kind,” which follows two Pepperdine University women as they travel cross-country to interview young girls about bullying. The film also introduces the “Kind Campaign,” which encourages young girls to talk openly about bullying and pledge to be kind to one another.

While chatting about the film, the Denton women decided to host a screening and discussion at the local high school in



The Denton Women’s Collective, started by Oklahoma Alpha LINDSAY VAN METER (second from left) received a Certificate of Appreciation from the Flower Mound Town Council for bringing an anti-bullying program to more than 600 female students.

Flower Mound, Texas. In fact, a couple women in the group are local teachers and PTA members and knew a program was launched for the Flower Mound boys, but not yet for the girls.

The group hosted the anti-bullying program, which involved two screenings of the film in the school gym. One screening drew a crowd of more than 600 female students and their mothers. After the movie, Lindsay shared her personal story onstage and posed questions to the crowd, while her friends walked around with microphones to help facilitate conversation among the women. The response was “fantastic,” Lindsay said.

Because of the events’ success, the Flower Mound Town Council and mayor honored the Denton Women’s Collective with a Certificate of Appreciation. The women are working in collaboration with the local school district to bring the “Finding Kind” program to more than 20 area schools.

“Our message is so simple: be kind,” Lindsay said. “It’s straightforward, universal and powerful.”

Lindsay’s work with the Denton Women’s Collective has also introduced her to Pi Phi in her community. Lindsay looks forward to growing the program and sharing its message of kindness and tolerance through the network of Pi Phi women. For now, Lindsay is excited to work with young girls to end bullying behavior before it starts.

“I am so grateful for my friends in the Denton Women’s Collective, because they’ve made it a wonderful experience,” Lindsay said. “This is by far the most rewarding thing I’ve ever done.”

To encourage kindness among women in your community, visit www.kindcampaign.com.

ARIZONA

Iowa Gamma ROBERTA “BOBBIE” SMITH BROWN, a charter member of the Arrowhead-West Phoenix, Arizona, Alumnae Club, celebrated her 100th birthday this April. Roberta was initiated in 1932 at Iowa State College (now Iowa State University) during the Great Depression, and celebrated her Diamond Arrow 75-year membership in 2007. Bobbie has six Pi Phi legacies, including her sister, two daughters and three granddaughters. From left, Iowa Gammas ROBERTA “BOBBIE” SMITH BROWN and her daughter LINDA TAYLOR MENTH.



Several Arizona Alphas attended a special ceremony at the University of Arizona Women’s Plaza to honor their relative Frances Pilling Warren, a pioneer educator in the Tucson, Arizona, area. The women unveiled a memorial plaque and lamppost dedicated to Frances, who was appointed Superintendent of Tucson schools in 1895. From left, Arizona Alphas KLAIRE KAUFMAN PIRTLE, GAIL PRICE GROSETTA, GAEEL MORRISON BEAHAM, CHRISTIE ALLEN JONES and PAMELA MORRIS SAMUELS.



CALIFORNIA

In November, the San Diego Alumnae Club held a “Drive for Literacy” book drive and fundraiser, in partnership with Frank Motors Group. The evening featured a reception with food by six local celebrity chefs and raised more than \$1,300 for First Book. The club also gathered more than 700 children’s books, which were collected at the event and at other Frank Motors locations. Pictured are members of the San Diego Alumnae Club and members of the California Epsilon Chapter at San Diego State University.



California Nus STEPHANIE TALLEY (left) and MARLA JENSEN (right) have made a commitment to help end breast cancer by participating in Susan G. Komen 3-Day for the Cure® walks. The Pi Phi sisters began walking after each had a family member or friend diagnosed with breast cancer. Together, the two women have completed a combined number of seven races and raised more than \$20,000 for Susan G. Komen for the Cure.



DISTRICT OF COLUMBIA

This spring, members of the Nation's Capital–D.C. Alumnae Club and Baltimore, Maryland, Alumnae Club helped the Maryland Gamma Chapter at Johns Hopkins University prepare for recruitment. The women practiced conversation starters, recruitment rotation and brainstormed how to showcase Pi Beta Phi to Potential New Members. Club members are looking forward to also helping the D.C. Alpha Chapter at The George Washington University and the Virginia Theta Chapter at Washington & Lee University prepare for recruitment.



ILLINOIS

The Arlington Heights, Illinois, Alumnae Club purchased and wrapped Christmas gifts for women and children at Home of the Sparrow, a transitional shelter for homeless women and their children. Club members donated pajamas, toys, warm clothing and outerwear for the shelter's clients. The wrapped gifts were distributed at the shelter's annual holiday party.



NEBRASKA

The Omaha, Nebraska, Alumnae Club invited Nebraska Gamma collegians from Creighton University to their February meeting in order to meet the next generation of club members. From left, Nebraska Gamma alumna BRITTANY MASCIO and Nebraska Gamma collegians MEGAN BOSCH and MELANIE KIM participated in a First Book Speed Read competition at the event.



NEW JERSEY

The Northern New Jersey Alumnae Club is enjoying a successful year of philanthropic and social events.

Members gathered for the club's annual craft night this past November in Summit, New Jersey. The women are pictured holding their handmade peppermint candles.



SIERRA LEONE

Texas Alpha SUSAN EARL HIGHTOWER (pictured) and Director Finance/Housing ANN WARMACK BROOKSHIRE, Texas Beta, promoted literacy while traveling abroad in Freetown, Sierra Leone. The women volunteered through Mercy Ships®, which provides health care services onboard hospital ships, and delivered books to children waiting for surgery or recovering from surgery.



OKLAHOMA

This fall, three generations of Oklahoma Alphas celebrated Bid Day at the University of Oklahoma.

From left, KATIE O'CONNOR helped welcome her little sister, ERIN O'CONNOR to Pi Beta Phi, alongside their grandmother FRANCIE MORAN DAY and mother DEBBIE DAY O'CONNOR.



SOUTH CAROLINA

Members of the Lowcountry, South Carolina, Alumnae Club presented a \$1,075 check to Hope Haven of the Lowcountry, a children's advocacy and rape crisis center. The donation was raised at the club's annual holiday dinner and will be used for items on Hope Haven's wish list. From left, South Carolina Alpha CHARLOTTE AYRES BOYNE, Hope Haven Executive Director Shaww Chin Capps, Tennessee Beta NINA BRAZELL BASS and Kentucky Beta EDIE SMITH.



TENNESSEE

The Nashville, Tennessee, Alumnae Club received the 2011 Distinguished Service Award from the American Speech-Language-Hearing Association. Since 1961, the club has operated its annual “Christmas Village” fundraiser, which has raised more than \$5 million for the Bill Wilkerson Hearing and Speech Center at Vanderbilt University. From left, Illinois Alpha GAIL HARTONG ZIKA, Tennessee Betas SUZANNE SMITH ALLEN, PATSY ALLEN and JANE WILKERSON YOUNT accepted the award.



TEXAS

Members of the Houston Alumnae Club gathered for an evening of friendship and fun this past fall. Pi Phis were asked to invite a friend from another fraternity or sorority organization to join them for dinner. More than 50 women attended the evening festivities.



TEXAS

Every December, the San Antonio, Texas, Alumnae Club hosts a Christmas tea to honor local Pi Phi mothers and daughters. Several generations of Pi Phi women attended this year’s event. From left, Texas Beta LESLIE LANDRUM KINGMAN, Texas Gamma MARKIE STARK and Leslie’s daughter, Virginia Epsilon BERKLEY KINGMAN.



VIRGINIA

Virginia Delta STEPHANIE TUCKER (left) keeps Pi Phi’s value of philanthropic service to others close to her heart. Stephanie works at The Dwelling Place, a family shelter in Norfolk, Virginia. She provides stability and guidance to children and their parents by coordinating events, including dressing up at a recent celebration.



Remember

By: FRAN DESIMONE BECQUE, New York Alpha
Fraternity Archivist and Historian

The Clarke School

Pi Beta Phi and the Clarke School for the Deaf have something in common: one special woman who was a fervent supporter and lifelong volunteer for both organizations.

The Clarke School for the Deaf was founded in 1867 in Northampton, Massachusetts, by Gardiner Green Hubbard. Though his four-year-old daughter, Mabel, had lost her hearing because of scarlet fever, Mr. Hubbard firmly believed she could learn the same as her peers. Mabel made great strides working with a language and speech teacher and by age 10, she was on par with other students her age.

With the financial help of philanthropist John Clarke, Mr. Hubbard started the Clarke School for the Deaf. The school was the first in the country to use the oral method to teach deaf students and the first to train teachers in auditory and oral education. Today, there are five campuses of the Clarke Schools for Hearing and Speech located in four different states.

In the late 1800s in Burlington, Vermont, a young woman visited frequently with her neighbors, the Yale Family. During these visits, the woman learned about deaf education from the Yale's oldest daughter, June, who was a teacher at the Clarke School. June's aunt, Dr. Caroline Yale, was the school's second principal.

When the young woman graduated from the University of Vermont in 1902, she wrote Dr. Yale asking to enroll in the Clarke School teacher-training program. She was accepted and moved to Northampton, even though the woman's mother wanted her to stay in Burlington and marry. To go against her mother's wishes and embark on a career at that time must have taken courage.

While in Northampton, the woman met a Vermont-born lawyer, and they married. The woman remained a Northampton



First Lady GRACE GOODHUE COOLIDGE, Vermont Beta, worked as a teacher at the Clarke School for the Deaf in Northampton, Massachusetts. She was a lifelong supporter of the school, including serving as trustee and benefactor.

resident her entire life, save for a few years when she lived in Washington, D.C. The woman was First Lady GRACE GOODHUE COOLIDGE, Vermont Beta.

Near the end of his term, President Calvin Coolidge's supporters raised \$2 million to build a library in his honor. A modest New Englander, the President insisted the funds be given to the Clarke School. In June 1928, the First Lady visited Dr. Yale. We do not know the details of that meeting, but several months later, on November 16, 1929, a tea was held for representatives of the Clarke School and President Coolidge's supporters who had pledged contributions. The Coolidges hoped the fund would "arouse a greater interest in the problems of the deaf and in this humanitarian work, which has so seemingly failed to keep pace with progress in other fields."

The Clarke School always remained a part of the Coolidges' lives. The President joined the Clarke School's Board in 1920 and served until his death in 1933. Shortly thereafter, his wife joined the Board. She was elected Chairman in 1935 and served for 17 years. She then became a Trustee and chaired the Centennial Fund until her death on July 8, 1957.

After Grace's death, fellow Trustee Senator John F. Kennedy said, "I have a strong personal recollection of her untiring devotion and labors throughout her life to this most worthy cause." ↪

Pi Phi Volunteers are Leaders, not Laborers

By: CHRISTINE TRAVERS MOLLENKOPF, Texas Beta

I am the Chapter House Corporation (CHC) President for Colorado Alpha at the University of Colorado. The chapter house is a 27,000-square-foot Tudor-style home and sleeps 78 women. A staff of six supports the women living in and out of the house, for a total of approximately 200 collegians. With all that humanity in one place, sometimes things get “sticky.” And let me tell you — I love it.

I love the energetic collegians, the dedicated staff, the beautiful property and (sometimes) I even love the sticky.

In the past few years, our CHC has faced a great deal of obstacles: staff changes, workers’ compensation claims, a flooded basement, a broken sewer pipe, major bathroom remodeling and construction defect litigation, just to name a few. It’s enough to scare most out of volunteering.

But it’s actually not scary once you dig into the problems as a team, with support from professionals. That’s right — you need professional help.

Pi Phis are a smart, capable, driven group of women. We literally can do anything and everything. However, I am going to put forth the idea that we shouldn’t all the time. When volunteers take on the burden of all the work, it’s easy to see how we can burn out. That’s where turning to the professionals can change the role of a Pi Phi volunteer from laborer to leader.

Instead of debating for two hours over wine versus silver blue cushions for dining room chairs, we can spend our time discussing the strategic goals for the chapter house, with plans for capital improvements. We hired a Greek alumnae relations company to reconnect Colorado Alphas through a bi-annual newsletter. We’re just two years in, and we’ve already seen the benefits of keeping our alumnae informed: their generous support has more than covered the cost of the newsletter.

Our CHC has also hired attorneys, engineers, architects, contractors and fundraising professionals. These professionals have saved us from making costly mistakes and elevated us into leaders making bigger decisions as a group.



Texas Beta CHRISTINE TRAVERS MOLLENKOPF (right) and fellow Chapter House Corporation volunteer Colorado Gamma SUSIE GROTLUSCHEN DONAHUE (left) fix Pi Phi housing issues by soliciting help from professionals, like contractors and architects.

I’ll be the first to admit Colorado Alpha has an amazing team of women serving as CHC volunteers. As CHC President, these women keep me motivated and help me coordinate the time and talent of each volunteer to the best possible use. California Zeta PATTI MCKEEVER GUILFORD handles all employee issues; Indiana Delta SUSAN YOUNG SCHEFFLER tackles functional projects; Missouri Gamma KATHY WINGO DANIEL handles design projects; and Colorado Gamma SUSIE GROTLUSCHEN DONAHUE writes the checks. Colorado Alphas RUTH ERK and NATASHA GULLIFER and Idaho Alpha MARGIE WERNER EPKE provide additional support. These dedicated women have other important commitments outside of Pi Phi, but they still create time to give back to our Fraternity.

As a mother to 3-year-old twins, a wife and an entrepreneur, life is busy. I often feel it’s hard to find the time to volunteer. However, my life wouldn’t be as fulfilling without my time with the women of Colorado Alpha’s CHC and the Colorado Alpha collegians. There is a special satisfaction that comes from watching our group achieve strategic goals, while providing safe housing to the collegians, our Pi Phi sisters. If you have a place in your heart for Pi Phi, I know there is a place for you to give of your talents as a Pi Phi volunteer. Go for it — you won’t regret it!

To become a volunteer, email volunteer@pibetaphi.org or visit www.pibetaphi.org/volunteernow. ↪

Is your CHC interested in sending a newsletter to alumnae? Contact Pi Phi Headquarters to help with your communications!

M
S
T
E
R
D
A
M

H
A
P
I

COMING SOON!

NEW! IMPROVED!

pibetaphi.org



THIS IS A GREAT SHOW!

"MAGICAL!"

HIGH-FLYING EXTRAVAGANZA!

EPHORA

"YOU'LL HAVE THE TIME OF YOUR LIFE!"

214-216

Reunions & Anniversaries

COLORADO

Colorado Betas from 1966–1970 pledge classes attended a weekend reunion celebration in Boston. Though some of the women had not seen each other since graduating from college, the Pi Phi sisters enjoyed conversation and laughter as if no time had passed. The women enjoyed a walk along the Charles River, a visit to the Glass Flowers exhibit at the Harvard Museum of Natural History and sightseeing in the historic Beacon Hill neighborhood.



FLORIDA

Members of the Florida Beta pledge class of 1956 celebrated their Pi Phi sisterhood during a weekend in Ponte Vedra, Florida. In addition to walks on the beach, a visit to The Fountain of Youth and carriage rides, the women enjoyed laughter and memories. A highlight was a dinner party with the Florida Beta pledge class of 1958, which was holding a reunion a few houses down. From back left, MONTY GILLHAM CALDWELL, TINE PHILLIPS LIEGEROT and LIZ WOODRUFF GRIZZARD. From front left, ANNE EASTERDAY VINSON, MARGIE WILLIAMS SMITH, LINDA HANSHAW STONE, CAROL COLE TRAVIS and DOTTIE HATTON MARDEN.



FLORIDA

The Florida Beta pledge class of 1958 held a “Golden Arrow” reunion in Ponte Vedra, Florida. The Florida State University Pi Phis enjoyed three days of sightseeing in nearby St. Augustine, Florida. Other weekend activities included cooking together, beachcombing and catching up. The group reminisced about their past reunions — 17 total — which started in 1982. The women also shared a dinner with members of the Florida Beta pledge class of 1956, who were attending a reunion celebration just down the beach.



LOUISIANA

Three generations of the Satterlee family proudly share the bonds of wine and silver blue.

The matriarch of the family, Texas Alpha ELIZABETH SMITH SATTERLEE, is mother to three Pi Phis and grandmother to five Pi Phis. From back left, Texas Zetas KATE HARLAN, BRITTANY HARLAN and SARAH SATTERLEE. From middle left, Louisiana Beta MARY SATTERLEE ANDREEFF, Texas Alphas CINDY SATERLEE HARLAN and ELIZABETH SMITH SATTERLEE and Florida Beta ALLISON SATTERLEE GOUGH. From front left, Louisiana Betas JANE SATTERLEE and ELIZABETH GOUGH — who were both initiated this past fall.



OKLAHOMA

In August, Oklahoma Beta RISA PARKER ALEXANDER hosted the annual reunion of the Oklahoma Beta pledge class of 1972 at her ranch in the beautiful Texas Hill Country. The Pi Phi sisters celebrated birthdays, rode horses, held a Cookie Shine, visited an exotic wildlife preserve and cherished each other's company. Next year, the women will reunite in Minnesota.



In Memoriam

Because of space constraints, *The Arrow*[®] will only print the entirety of an obituary for a past Grand President. If you know a sister who has died, please inform Pi Beta Phi Headquarters. Names will only be listed in *The Arrow* if accompanied by a published notice, including those names entered electronically via eReports, Pi Phi's online reporting system. Published notices include a newspaper or newspaper website obituary, a funeral program/prayer card or a listing in a college/university alumni newsletter. Email Alison Bauer at alison@pibetaphi.org or mail to Headquarters.

From the Editor:

In Memoriam will be noticeably longer than in the past due to efforts to maintain a more accurate database by utilizing new Internet search methods. The Arrow would like to thank Oregon Alpha MAJA TANAKA BERGE for her help updating the Pi Beta Phi database.

In Memoriam lists the name, initiation year, and month and year of each member who has died.

Alabama Alpha

Mary Gallagher Henning
1942; December 2011

Evelyn Meadow Laban
1929, affiliated Florida Beta;
October 2011

Alabama Beta

Nancy Perry Abernathy
1950; January 2012

Alberta Alpha

Dorothy Wilton-Clark Graham
1947; December 2011

Arizona Alpha

Susan Salant Burdick
1963; November 2011

Marilyn Mugge McGeorge
1943; December 2011

Arkansas Alpha

Patty Green Butler
1943; December 2011

Ruth McWilliams Carson
1937; October 2011

Lois Foutz Colbert
1939; July 2011

Pat Nelson Dyniewicz
1933; October 2011

Joyce Hathcoat Green
1942; November 2011

Carl McDowell Matkin
1948; December 2010

Kelle Phillips Ray
1984; January 2012

Betty Thompson Reed
1940; November 2011

Elizabeth Thomas
1937; April 2011

Arkansas Beta

Amy Laffoon Jackson
1998; January 2012

California Alpha

Katharine Moran Cashman
1934; November 2010

Phyllis Swing Hind
1941; March 2011

Helen Campbell Killefer
1943; January 2012

California Beta

Mavis Mahan Cain
1941; October 2011

California Delta

Doreen Demond Marshall
1941; November 2011

Mary Mayfield Rogers
1949; January 2012

Barbara Tremayne Sheller
1940, affiliated California Alpha;
June 2011

Diane Talmage Van Iden
1974; November 2010

California Epsilon

Virginia Buchanan Hammer
1950; December 2010

California Gamma

Eloise Bixler Kline
1978; November 2011

Edith Hall Maxwell
1957; November 2011

Marilyn Dunton Simpson
1942; January 2012

Colorado Alpha

Mary Ackley Carlson
1944; April 2011

Martha Woodbury Needham
1944; January 2012

Susan Larwill Pease
1944; November 2010

Joan Curtis Sims
1949; October 2011

Colorado Beta

Bettye Mitchell Fitch
1945; October 2011

Jacqueline Shadford Tempest
1945; December 2011

Connecticut Alpha

Grace Webster Adams
1943; December 2011

Emily Jennings Hollman
1946; January 2012

D.C. Alpha

Anne David Wilson
1937; January 2011

Florida Alpha

Mary Foard Casey
1932; October 2011

Lucille Clark Johnson
1943; January 2012

Florida Beta

Mildred Wright Charles
1932; November 2011

Cynthia Cline Chase
1961; October 2011

Charlotte Rider McWhorter
1942; December 2010

Lois Adkins Pope
1935; December 2010

Sue Fain Vondracek
1954; January 2012

Florida Delta

Nancee L. Gell
1975; January 2012

Florida Epsilon

Jennifer Mahar Jenkins
1997; December 2011

Jeanne Viggiano Watson
1990; January 2012

Florida Gamma

Mary Gessford Boone
1945; December 2010

Nancy Corbett Robertson
1946; November 2011

Eleanor Ham Roessler
1938, affiliated North Carolina
Alpha; November 2010

Georgia Alpha

Dottie Addison Daley
1949; December 2010

Idaho Alpha

Marguerite Sater Cameron
1948; November 2011

Geraldine Shepherd Curtis
Lederer 1947; November 2011

Mary Braxtan Robinson
1935; December 2010

Illinois Beta-Delta

Betty Warwick Norton
1940; October 2011

Illinois Eta

Mary Dwyer Abbott
1947; November 2011

Janice Stocks Duff
1952; December 2011

Mildred Smith Erdman
1944; December 2011

Betty Bold Kenney
1939; November 2010

Mary Lloyd Noel
1937; January 2012

Dorothy Dayvault Powell
1950; December 2011

Illinois Theta

Catherine Logan Parsons
1955; November 2011

Miriam Backes Roszell
1947; January 2012

Illinois Zeta

Mary Peterson Bruning
1944; October 2011

Dorothy Kennedy Oldfield
1944; October 2011

Barbara Littleton Parshall
1937; November 2010

Indiana Alpha

Pat Andrews Cole
1957; December 2011

Jane Stainbrook Maloney
1940; January 2012

Judy Babcock Roland
1954; October 2011

Indiana Beta

Barbara Lowe Lentz
1952; December 2010

Virginia "Gingie" Reed Noe
1956; November 2011

Indiana Delta

Connie Henschen Bland
1949; October 2011

Mary Grande Boarini
1948; December 2011

Martha Wood Hardin
1936; November 2010

Indiana Epsilon

Winifred Ruedemann Meyer
1942; November 2011

Indiana Gamma

Betty Emmett Gery
1929; November 2011

Mary Grady Hawkins
1951; January 2012

Peggy Underwood Ricky
1936; November 2010

Carolyn Pinkerton Wenz
1956; November 2011

Indiana Zeta

Jo Ellen Livezey Kress
1953; December 2010

Barbara Buckels Silverburg
1953; January 2012

Iowa Alpha

Margaret Smith Boyle
1939; November 2011

Vivian Holland Brown
1937; January 2011

Virginia Hawkins Paramore
1939; January 2012

Shirley Scott Rayner
1954; January 2011

Iowa Beta

Lois "Gwen" Dimick Jensen
1942; January 2011

Betty Finch Krane
1952; November 2011

Jeanne Trimble Lindskog
1942; November 2011

Iowa Gamma

Virginia Alexander
1925; January 2012

Doris Denman Crittenden
1940; October 2011

Dorothy Root Metzler
1938; December 2011

Kansas Alpha

Jean Saffell Allen
1944; November 2010

Teresa Comley Hamilton
1941; December 2011

Ann Horton Jeter
1934, affiliated California Delta;
October 2011

Marjorie Woolwine Knightly
1954; October 2011

Shirley Jones Mann
1933; November 2011

Nancy Haskin Olson
1959; December 2011

Kansas Beta

Sue Hughes Collins
1953; November 2011

Kay Ingersoll Duncan
1962; December 2010

Kentucky Alpha

Ruth Dentinger Baird
1952; August 2011

Louisiana Alpha

Judith Sharp Cobb
1959; December 2011

Mary Hackett Cummins
1939; January 2012

Louisiana Beta

Julianna Lang Bowers
1966; November 2010

Maine Alpha

Nellie Whitney Brown
1940; November 2011

Manitoba Alpha

Donalda Long Phillips
1941; January 2012

Maryland Beta

Amelia Fisher Carroll
1944; November 2011

Michigan Alpha

Margaret Lee Durnell
1963; November 2011

Jacque Trombley Harrell
1958; November 2011

Joyce Prange Oppel
1959; April 2011

Beth Daugherty Robb
1981; December 2010

Michigan Beta

Betty Scherling Love
1933; November 2011

Barbara Miller
1970; March 2011

Michigan Epsilon

Rachel Worthington
2001; January 2012

Michigan Gamma

Audra Stark Chevalier
1955; December 2011

Minnesota Alpha

Jane Arveson Hassenstein
1935; January 2011

Kathleen Gramling McCarthy
1953; July 2011

Ruth Garrett McDonald
1940; November 2010

Ann Louise Jacobson Sorenson
1936; November 2011

Mississippi Alpha

Caroline Roberts Bass
1961; January 2012

Barbara Bilbo Rossetto
1963; January 2011

Mississippi Gamma

Teresa "Tess" Veal
2009; February 2012

Missouri Alpha

Doris Merrill Laatsch
1944; November 2011

Karen Owens Pletz
1966; November 2011

Missouri Beta

Maxine Kruth Elkington
1944; October 2011

Manon Cleary Kijek
1961; November 2011

Missouri Gamma

Virginia Feist Witte
1944; December 2011

Montana Alpha

Kay G. McConnell
1947; November 2011

Phyllis Davis Wolcott
1936; January 2011

Nebraska Beta

Mary Anderson Davis
1951; November 2010

Marilyn Simpson Ford
1943; January 2012

Barbara Colwell Martens
1951; December 2010

Mary Sherwood Moranville
1944; December 2010

Nevada Alpha

Jill Brouner Dempsey
1969; January 2011

New York Alpha

Margaret Harris Ewing
1939; September 2011

Pat Kempf Lamb
1940; August 2011

Lucile Spencer Sotherden
1935; December 2010

New York Delta

Martha Atwood Cheney
1937; January 2011

Helen Cole Field
1951; March 2011

Lenore Breyette Roche
1940; January 2011

Jane Shanklin Warter
1951; August 2011

Mary O'Connell Willis
1943; April 2011

New York Gamma

Doris Suhrlund Sanford
1929; January 2011

Ann Kirkham Woodbury
1939; December 2011

North Carolina Alpha

Nancy Davis Altizer
1953; September 2011

Mary Chambers Collier
1962; September 2011

Ann Osborne Corriher
1952; December 2010

Courtney Crocker Parkin
1994; September 2011

North Carolina Beta

Ann Smoot Cowin
1944; January 2012

Barbara Boyer Murphy
1948; January 2011

Margaret Wischmeyer Taylor
1939; November 2011

Elizabeth Antrim Thrower
1958; December 2011

North Dakota Alpha

Sharon Poole Jaeger
1961; December 2011

Ohio Alpha

Patsy McGraner Barrington
1976; December 2011

Ruth Story Frederick
1939; September 2011

Marian Morris Stephan
1929; March 2011

Mary Carolyn Miller Wiley
1957; November 2011

Ohio Beta

Barbara Bernheisel Conn
1949; October 2011

Mary Thompson Staadt
1940; January 2012

Jean Allen Stine
1936; January 2012

Ohio Delta

Charlotte Snyder Baltzly
1932; November 2011

Ruth Spurrier Gallinger
1955; November 2011

Betty Gast Grogan
1957; November 2011

Ohio Epsilon

Marian Beroset Faber
1945; January 2012

Joanne Saxer Loss
1952; November 2010

Ohio Zeta

Margaret Woodruff Furry
1952; December 2011

Linda Linscott Robert
1957; January 2012

Oklahoma Alpha

Polly Pollock Holway
1941; January 2012

Patty Jayne Johnston
1946; January 2012

Adele Perkins Slagle
1937; October 2011

Oklahoma Beta

Phyllis Barnes Buttram
1937; November 2011

Nell Cleveland Danner
1943; November 2010

Ontario Alpha

Gwendolyn Husband Stockwell
1936; December 2011

Ontario Beta

Geraldene Mackinnon
Dixon-Robinson
1938; December 2011

Joyce Kemp McMeekin
1939; December 2011

Oregon Alpha

Helen Dorles Kludt
1943; November 2011

Dawn Whitehead Lawrence
1969; November 2011

Mary Moore Macartney
1934; December 2010

Nancy McLaughlin
1969; November 2011

Oregon Beta

Shirley Wheeler Ditewig
1934; January 2012

Barbara Arnold Polachek
1945; November 2011

Sybil Kennedy Specht
1940; October 2011

Oregon Delta

Kyra Donelson McFerran
1970; October 2011

Pennsylvania Gamma

Helen Minnick Hartzell
1950; October 2011

South Carolina Alpha

Josephine Philson Capers
1934; October 2011

Eris Ringham Jordan
1940; December 2011

South Carolina Beta

Amy Wyndia Frye
1983; October 2011

South Dakota Alpha

Ruthalma Turner Rise
1942; September 2011

Tennessee Alpha

Jessie Walker Ayers
1940; November 2011

Edna Jacoway Gill
1945; November 2011

Martha Green Russell
1943; December 2010

Tennessee Beta

Jane Haswell Swiggart
1943; January 2012

Tennessee Gamma

Carolyn Edmundson
1950; September 2011

Linda Wilson Porter
1960; January 2012

Texas Alpha

Mary Armstrong Berryman
1950; November 2011

Mildred Norwood Daugherty
1942; November 2011

Emily Kennard Derounian
1942; December 2010

Editha Williams Dudley
1933; December 2011

Patricia Morrison Fleming
1966; January 2012

Elaine Richardson Maloney
1946; January 2012

Carrie Budd Naas
1985; November 2011

Bette Blanchette Schleier
1942; October 2011

Carol Holmes Wolf
1967; December 2011

Texas Beta

Virginia Touchstone Akridge
1937; January 2011

Kathryn Ramsey Blackwell
1927; January 2011

Florene Wilson Reed
1942, affiliated Texas Alpha;
November 2011

Texas Zeta

Charlotte Johnson Bowie
1977; January 2012

Kathleen Seale Lohmeyer
1978; November 2011

Joy Ray Macanliss
1978; January 2012

Leah Middlebrook Tucker
1977; January 2012

Utah Alpha

Asha Davenport
2011; January 2012

Katherine Shill Kelly
1941; January 2012

Janet Moyle Nielson
1948; December 2011

Janet McLeese Smith
1950; December 2011

Vermont Alpha

Phyllis Burke Cunningham
1944; October 2011

Vermont Beta

Agnes Conley Dowling
1938; January 2012

Virginia Alpha

Nan Black Ulle
1939; November 2011

Virginia Gamma

Joann Mitchell Holmes
1951; November 2011

Margaret Mitchell Mollenkopf
1938; December 2011

Virginia Doepke Myers
1940; December 2010

Washington Alpha

Julie Scott Levan
1943; November 2010

Naomi Edwards Randall
1937; January 2011

Washington Beta

Michele Ouellette Heneghan
1970; January 2012

Meredith Boyle McClendon
1965; November 2011

Jean Howard Smith
1938; January 2012

Washington Gamma

Georgimay Gerhard Weick
1948; December 2010

West Virginia Alpha

Mary Fiedler Hardman
1941; November 2011

Mildred Moon Pugh
1939; November 2011

Ann Hunnicutt Stafford
1951; October 2011

West Virginia Beta

Martha Clark Donley
1950; December 2011

Wisconsin Alpha

Nancy Graves Mead
1948; November 2011

Jean Sorum Mills
1957; December 2011

Ruth Roberts Salter
1945; January 2012

Wisconsin Beta

Helen Skinner Androne
1937; January 2012

Helen Swanson Hamilton
1955, affiliated Minnesota
Alpha; November 2011

Wisconsin Gamma

Joan Pomainville Laughran
1952; November 2010

Edith O'Meara Mitchell
1945; December 2011

Anne Snyder Peper
1940; November 2011

Wyoming Alpha

Eleanor Corbett Bishop
1933; December 2010

Torrey Amundson Carls
1990; August 2011

Dorothy Holmes Cleveland
1940; October 2011

Adele Heink Roblee
1962; January 2012

Priscilla Lynch Roedel
1954; November 2011



SPRING FOUNDERS' DAY MOTHER'S DAY GRADUATION

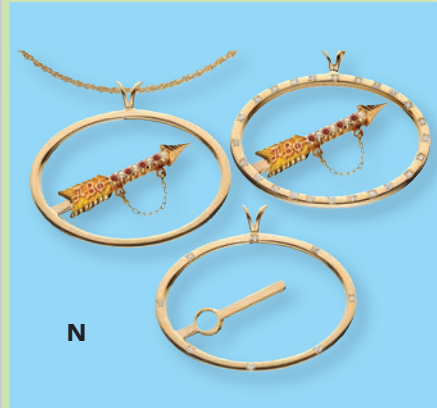
A	X916	Graduation Sash Embroidered.	\$30
B	PX914	Graduation Cords	\$12.50
C	X107	Vertical Appliqued T-shirt American Apparel®, unisex fit. Cotton.	\$28
D	X105	Paisley Appliqued T-shirt Unisex fit. Cotton.	\$25
E	X452	Damask Tote Embroidered design. Canvas, fully-lined.	\$38
F	X856	Crest Frame Holds a 6x4" photo. Silver-plated.	\$24

Tumblers
These thermal insulated tumblers are made of a high-grade polycarbonate material. Microwave and dishwasher safe. 16 ounces.

G	X615	Zebra Tumbler	\$16
H	X616	Mom Tumbler	\$16
I	X617	Alumna Tumbler	\$16

To view our complete line, visit www.pibetaphi.org/store.

Pi Phi Express



Our Carnation Collection

The flower of the Fraternity. *Cubic zirconias set in sterling silver.*

- J PMD195 **Carnation Pin** \$40
- K PMD198 **Carnation Ring** \$40
- L PMD199 **Carnation Earrings** \$35
- M PMD225 **Carnation Necklace** \$40

N Badge Holders
Create a unique piece of jewelry especially for your badge. Each badge holder is custom-made to fit your badge. Call Pi Phi Express for details. Prices will vary depending on design.

- O MD901 **Silver Arrow Society Pin** \$40
25-year recognition pin. *Sterling silver.*

- P MD850 **Order of the Golden Arrow Pendant** \$20
50-year recognition pendant. *Gold-filled.*
- MD851 **Order of the Golden Arrow Pendant** \$175
50-year recognition pendant. *10k gold.*
- Q MD861 **Order of the Golden Arrow Pin** \$20
50-year recognition pendant. *Gold-filled.*
- MD862 **Order of the Golden Arrow Pin** \$175
50-year recognition pendant. *10k gold.*
- R MD852 **Diamond Anniversary Pin** \$30
75-year recognition pin. *Cubic zirconia, gold-filled.*
- S MD801 **Mother's Pin** \$40
Pearl, gold-filled.

News & Notes

Illinois Zeta ASHLEY DYE Honored by the Association of Fraternal Leadership and Values

Pi Beta Phi congratulates Illinois Zeta ASHLEY DYE, Assistant Dean for Fraternity and Sorority Affairs at the University of Illinois, Urbana-Champaign, winner of the 2012 Association of Fraternal Leadership and Values Steven B. Dealph Outstanding Greek Professional Award.

The Dealph Award recognizes a campus-based fraternity or sorority professional advisor who exemplifies not only the ideals of the profession, but also the core fraternal values of the organizations with which the advisor works. Ashley was nominated by her students and colleagues because of her ability to challenge others in a thoughtful and positive way while supporting their growth and development.

Ashley has served the Fraternity in a variety of leadership roles, including bringing her knowledge and passion for Greek Life to Pi Beta Phi's National Panhellenic Conference delegation.



Illinois Zeta ASHLEY DYE, Assistant Dean for Fraternity and Sorority Affairs at the University of Illinois, is presented with the Steven B. Dealph Outstanding Greek Professional Award by Mark Koepsell, Association of Fraternal Leadership and Values Executive Director.



MARK YOUR CALENDAR ...

JUNE 28–JULY 1, 2013

SHERATON SAN DIEGO HOTEL & MARINA

SAN DIEGO, CALIFORNIA



PI BETA PHI CONVENTION 2013

The Arrow Reader's Guide

The Arrow® of Pi Beta Phi is the official quarterly publication of Pi Beta Phi Fraternity. The purpose of *The Arrow* is to present matters of value to Pi Beta Phi; furnish a means of communication among collegiate chapters, alumnae organizations and officers; and represent the worthiest interest of Fraternity women.

CONTACT THE ARROW:

The Arrow of Pi Beta Phi Fraternity
1154 Town & Country Commons Drive
Town & Country, Missouri 63017
TheArrow@pibetaphi.org
Phone: (636) 256-0680 Fax: (636) 256-8095

HOW TO RECEIVE THE ARROW

Collegians receive quarterly issues of *The Arrow* each year with payment of collegiate dues through their chapter. Individual copies are mailed to each undergraduate member's permanent address, and each Pi Beta Phi chapter receives six copies.

The Fall *Arrow* is mailed to all alumnae. Dues paying alumnae are mailed the winter, spring and summer issues. *The Arrow* is posted online, and non-dues paying alumnae who have a good email address listed with Headquarters (HQ) receive an email notification. Messages are also posted on the Fraternity's official Facebook page and Twitter when the magazine is available online.

To receive four hard copy issues of *The Arrow*, pay your \$25 annual Fraternity alumna dues to your local alumnae organization or directly to HQ by mailing a check to Pi Beta Phi Fraternity, Alumna Dues, 1154 Town & Country Commons Drive, Town & Country, Missouri 63017. You can also click on the Pay Dues button on the home page of www.pibetaphi.org.

HOW TO MAKE AN ADDRESS CHANGE OR NAME UPDATE

Visit the profile section of the website, or email your name and/or address changes to headquarters@pibetaphi.org. You may also call Pi Beta Phi HQ at (636) 256-0680 or mail a written notice to Pi Beta Phi Headquarters.

LETTERS TO THE EDITOR

Email your letter to the Editor at editor@pibetaphi.org. Please include your full name and chapter of initiation. *The Arrow* reserves the right to publish any letter received. Letters may be edited for space and clarity.

HOW TO GET PUBLISHED

All Pi Phis are encouraged to submit news and stories to *The Arrow*. All submissions are subject to editing for content, grammar and space constraints. When submitting a story, be sure to include a member's preferred chapter, first, maiden and last names. As a general rule, *The Arrow* does not print stories about weddings, engagements, pinnings or birth announcements. Visit *The Arrow* webpage for more information and to download Pi Beta Phi's Photography Guidelines. We cannot guarantee the publication of any submission. We receive so many and space is limited.

ARROW SUBMISSION DEADLINES

Summer Issue: May 1	Winter Issue: November 1
Fall Issue: August 1	Spring Issue: February 1

Pi Beta Phi Centennial Celebration Save-the-Date

2012 marks the 100-year anniversary of the establishment of the Pi Beta Phi Settlement School in Gatlinburg, Tennessee. The Settlement School became not only Pi Phi's philanthropic first, but a first for any National Panhellenic Conference group.



In celebration of this great accomplishment, Pi Beta Phi will be hosting a Centennial Celebration in Gatlinburg November 2-3. Events will begin Friday evening and will run through Saturday afternoon. The Fraternity's website will have more information as it becomes available, along with travel information for those members who would like to celebrate with us.

As part of the celebration to commemorate 100 years of literacy service, Pi Beta Phi Foundation will be raising funds for a special Centennial statue. The statue, along with a historical marker, will be placed on property steeped in Pi Phi heritage, adjacent to the site of the Arrowcraft shop, and will be dedicated during the Centennial Celebration in November.

Want to Learn About Pi Phi's Legacy Policy?

Pi Beta Phi is excited to announce a new educational opportunity for family and friends who have a legacy participating in recruitment. This late-summer webinar will discuss Pi Phi's legacy policy, and feature a question-and-answer session with the Director Membership. Look for more information in the Summer *Arrow*.

Pi Beta Phi Welcomes New Alumnae Organization

The Alumnae Region Five team announces the chartering of a new alumnae club, Red River Valley, North Dakota, located in the Grand Forks area. Grand Forks is also home to the North Dakota Alpha Chapter at the University of North Dakota, which offers the opportunity for alumnae to support collegiate members and build lifelong connections.

Upcoming Maryland Beta Reunion

The Maryland Beta Chapter from the University of Maryland will gather for a reunion on June 23, 2012, at 11:30 a.m. at Matthew's 1600 Restaurant & Bar in Catonsville, Maryland. To RSVP, email Maryland Beta BETTY SCHAFF DEGRAFFT at bettyandhart@verizon.net.



Pi Beta Phi Fraternity
1154 Town & Country Commons Drive
Town & Country, MO 63017

CHANGE SERVICE REQUESTED

NONPROFIT
ORGANIZATION
US POSTAGE
PAID
PERMIT NO 4416
COLUMBUS, OH

THREE GREAT REASONS TO CONNECT WITH PI BETA PHI THIS SUMMER



Alumnae Leadership Summits
Alumnae Advisory Committee (AAC) Train-the-Trainer Program
Chapter House Corporation (CHC) Summit by FHC*

Why attend?

- Participate in workshops designed specifically for alumnae leaders
- Network with other alumnae, AAC and CHC volunteers and Headquarters staff
- Receive hands-on training: *Leading with Values*, Alumnae eReports and Read. Lead. Achieve.

JOIN US! CHOOSE FROM ONE OF THREE LOCATIONS. REGISTRATION OPENS IN APRIL!

ATLANTA: JUNE 1-2 | KANSAS CITY: JUNE 8-9 | LOS ANGELES: JUNE 22-23

*CHC SUMMIT OFFERED EXCLUSIVELY IN KANSAS CITY, JUNE 8-9