



The Arrow

OF PI BETA PHI • SPRING 2019

UNTANGLING A VUCA WORLD

How Pi Phis are
surviving and
thriving in
a **V**olatile,
Uncertain,
Complex and
Ambiguous
landscape

ALSO INSIDE

How You Can “Virtually”
Attend Convention 2019

Fraternity Day of
Service Highlights



OF PI BETA PHI • SPRING 2019

FEATURES

8 PREPARING PI PHI LEADERS FOR STEADY LEADERSHIP

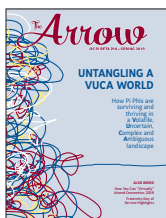
In this VUCA era, leaders need to be confident, comfortable and agile.

28 UNTANGLING A VUCA WORLD

Welcome to life in a VUCA world, where conditions are Volatile, Uncertain, Complex and Ambiguous. This way of life impacts each of us — be it personally, professionally or as a member of Pi Beta Phi.

36 LOBBYING FOR OUR FUTURE

Since 2013, SHEILA CONSAUL, Illinois Theta, has been navigating the VUCA waters of Capitol Hill while lobbying for the fraternity and sorority experience.



ON THE COVER

We all have days when we feel like we're unraveling and being pulled in a dozen different directions or days when nothing goes according to plan. Welcome to life in a VUCA world, where conditions are Volatile, Uncertain, Complex and Ambiguous. Find out more about what VUCA means and how Pi Phis are overcoming it every day.

IN EVERY ISSUE

2 PERSPECTIVE

40 EVENTS

3 ONE, TWO, THREE WORDS

41 ENDLESS IMPACT

6 BUILT FOR SISTERHOOD

42 LIVING OUR VALUES

10 COLLEGIATE NEWS

44 READ > LEAD > ACHIEVE®

20 ALUMNAE NEWS

46 IN MEMORIAM

26 IN HER WORDS

48 PI PHI EXPRESS®

27 REMEMBER

2018 CAROLYN HELMAN LICHTENBERG CREST AWARD WINNERS ARE LEADERS FOR LIFE

We are excited to announce our 2018 Carolyn Helman
Lichtenberg Crest Award winners!

16



THE ARROW® OF PI BETA PHI

Spring 2019 • Vol. 135 No. 3

GRAND COUNCIL

Paula Pace Shepherd Emory McGinnis Eison
Alison Veit Heafitz Rae Wohlhueter Maier
Amy Lorenzen Southerland Marla Neelly Wulf
Jenn Plagman-Galvin

EXECUTIVE DIRECTOR

Juli Holmes Willeman

EDITORIAL STAFF

Leslie Palmer Breimeier Emily Kuryla
Shawn Eagleburger TG Livak
Katey Newell Hobbs

PI BETA PHI FRATERNITY FOR WOMEN

1154 Town & Country Commons Drive
Town & Country, Missouri 63017
(636) 256-0680 | FAX (636) 256-8095
headquarters@pibetaphi.org
www.pibetaphi.org

CONNECT WITH US!

f /pibetaphi
f /pibetaphifoundation
t /pibetaphihq
t /pibetaphifndn
p /pibetaphi
e /pibetaphihq
in Pi Beta Phi Fraternity
v /pibetaphihq
www.piphiblog.org

SUBMISSIONS

All Pi Phis are encouraged to submit news and stories to *The Arrow*. Articles may be sent by email to thearrow@pibetaphi.org or by mail to *The Arrow*, 1154 Town & Country Commons Dr., Town & Country, Missouri 63017. Visit www.pibetaphi.org/thearrow for submission and photography guidelines.

All photos and written submissions become the property of Pi Beta Phi, and are subject to editing for content, grammar and space constraints, and may be used for other educational or marketing purposes by the Fraternity. We cannot guarantee the publication of any submission.

SUBMISSION DEADLINES

Fall — August 1 Spring — February 1
Winter — November 1 Summer — May 1

ADDRESS/NAME CHANGES

Please direct any address or name changes by email to thearrow@pibetaphi.org or by mail to *The Arrow*, 1154 Town & Country Commons Dr., Town & Country, Missouri 63017. You may also call Pi Beta Phi Headquarters at (636) 256-0680 or update your profile at www.pibetaphi.org/updatedmyprofile.

HOW TO RECEIVE *THE ARROW*

To receive four hard copies of *The Arrow*, pay your \$35 annual alumna dues to your local alumnae club or directly to Headquarters. Visit www.pibetaphi.org/dues or mail a check to Pi Beta Phi Fraternity, 1154 Town & Country Commons Dr., Town & Country, Missouri 63017.



FRATERNITY
COMMUNICATIONS
ASSOCIATION

Advocating for Pi Phi in a VUCA World



PAULA PACE SHEPHERD
 Grand President
 Texas Epsilon
 University of North Texas

On July 1, 2013, I was installed as Pi Beta Phi’s 23rd Grand President. I pledged myself to lead intentionally and purposefully. I felt we would find our greatest success if we could keep sisterhood our main priority and not be distracted by the non-essential matters that would compete for the Fraternity’s attention. As someone who is not overly political myself, I felt Pi Phi had no business engaging in politics.

Nearly six years later, I am still committed to leading with intention and purpose. I still believe a deliberate focus on fun and friendship is what will make us most successful. However, I now know Pi Phi must be involved in advocating for the sorority experience — even when that takes us to our capitol building and into the offices of our lawmakers. Simply put, Pi Phi cannot be part of the conversations that threaten our ability to exist if we don’t enter the political arena.

For many years, fraternities and sororities have faced significant challenges, such as the fight to remain single-sex organizations. Throughout my presidency, I have seen these challenges become more frequent. With the tragic deaths experienced by men’s fraternities in 2017, hazing laws have become more specific and unforgiving — and rightfully so. At the same time, university demands of fraternities and sororities have increased and, in my opinion, become overreaching. On public and private college campuses across North America, we can point to very real instances in which the ability of undergraduates to assemble as sorority women, united in friendship and common values, has been taken away.

I will be the first to admit that we can sometimes be our own worst enemy. If our members contribute to instances of hazing or any action that does not align with our values, we fuel the fire working against us. All the good we do can be overshadowed by poor behavior and bad decisions. We must be an organization committed to integrity. By modeling friendship, leadership, philanthropic service and lifelong commitment for 152 years, we’ve demonstrated that there is a relevant place for women’s fraternities in today’s world.

To protect our right to assemble as fraternity women, we must advocate for ourselves and support legislators who understand the valuable role fraternities and sororities play on college campuses and within communities. We must be engaged in the conversation, or there will be no more conversation to be had. Very literally, we are in a fight for our existence.

This issue of *The Arrow* focuses on a term introduced to Grand Council and senior Headquarters staff by Leadership Development Officer **LISA MASTERS**, Georgia Alpha, during our 2017 strategic planning efforts. VUCA — an acronym for volatile, uncertain, complex and ambiguous — describes the various dimensions of an uncontrollable environment. Frankly, there is no better term to describe our world today. We cannot sit idly. We cannot rely on our past successes. We cannot let someone else fight our fight. If we believe in the experience Pi Beta Phi has afforded us — and I know we all do — then we must do everything we can to survive and thrive in our VUCA world. Our beloved Fraternity deserves our care. ◀

Paula Pace Shepherd



Above: Volunteers at the 2019 Fraternity Day of Service Signature Event in Omaha unload and sort books.

Your City Could Host a 2020 Fraternity Day of Service Signature Event

Can you think of organizations in your area that could use 20,000 new books? Does your chapter or alumnae club already have great relationships with schools or after-school programs in your city? Are you passionate about the Read > Lead > Achieve® mission and want to know how you can do even more? Do you want to get more involved with Pi Phi and your alumnae club?

If you answered "yes" to any of these questions, your city could be the next to host a Fraternity Day of Service Signature Event! Your chapter or alumnae club could make a huge impact on the lives of underserved children in your area by bringing a Signature Event to your city. Complete the online application at www.pibetaphi.org/fraternitydayofservice by May 15, 2019. If you have questions, please email literacy@pibetaphi.org.

COALITION FOR COLLEGIATE WOMEN'S LEADERSHIP

The Coalition for Collegiate Women's Leadership, formerly the Southeastern Panhellenic Association, continues to bring collegiate women together with the goal of education, support and connection. Thousands have taken part in its annual conference, a three-day event including education on leadership and pressing topics in the collegiate and fraternal community. Several Pi Phis were in attendance at the February 2019 conference, which provided educational sessions on development in leadership skills, character, management, diversity, health and wellness, service and important women's issues. Thank you to our members who continue to keep Pi Beta Phi a leader in the fraternal community.

Right: Pi Phis attend the Coalition for Collegiate Women's Leadership in Atlanta.



Get Involved — Volunteer Today!

One of the greatest gifts you can give is the gift of your time. Pi Phi is always looking to fill leadership positions to support our collegiate chapters and alumnae clubs. The Fraternity provides training through webinars, workshops and meetings, including officer training at Headquarters, at each convention and through our Online Learning Center. Volunteer officers build rewarding relationships with many Pi Phis and gain valuable experience applicable to other community and professional roles.

There are many ways you can get involved. To view open volunteer opportunities, please visit www.pibetaphi.org/volunteernow.

New York Eta Chapter Celebrates 10 Years of Sincere Friendship

Sisters of the New York Eta Chapter held a weekend of events to commemorate the chapter's 10-year anniversary at New York University. The festivities were held February 2-3 with events organized by pledge class, an event for all alumnae and a Cookie Shine to top off the celebration. New York Eta **GRACE HOUGHTON-LARSEN**, former Chapter President, discussed the inception of this event: "When I started planning this reunion nearly nine months ago with **CASEY TALBOT**, a New York Eta and former Chapter President, I was so pleasantly surprised at the unspoken sisterhood that

connects all Pi Phis. Our conversations would quickly turn from talking logistics to reminiscing about our college years and giggling about how little things have changed. With these conversations in mind, we knew that planning this weekend would be an opportunity for so many alumnae and collegians to celebrate shared experiences and the incredible sisterhood of New York Eta and Pi Phi as a whole. Connecting with sisters across the country and planning a very special Cookie Shine has been truly an honor. New York Eta is so proud to celebrate 10 years, and we can't wait to celebrate many more!"



From left: New York Eta members **HEATHER KUEBEL**, **KATIE O'NEIL**, **KATHLEEN MERIANO**, **CAITLIN LINK** and **CASEY TALBOT** were thrilled to celebrate the chapter's 10-year anniversary. Each woman served a term as Chapter President.

North Carolina Delta



Even when something feels permanent — such as a chapter house — circumstances can change quickly and unexpectedly. In these situations, thinking creatively, working collaboratively and acting purposefully can transform unforeseen challenges into beneficial solutions. The North Carolina Delta Chapter at North Carolina State University (NC State) knows this firsthand.

In November 2017, then Chapter House Corporation (CHC) President **ELIZABETH JACKSON CHACON**, Georgia Alpha, reached out to Pi Beta Phi Fraternity Housing Corporation (FHC) for support regarding a major decision the CHC faced. At the time, the North Carolina Delta members were housed in a duplex located near the campus' Greek Village, sharing a wall with Kappa Alpha Theta. The university, owner and operator of most fraternity and sorority housing at NC State, acknowledged that this type of housing was unconventional and lacked competitive edge. When the Theta chapter relocated, the university proposed North Carolina Delta also uproot from its duplex and move into a stand-alone house recently vacated by another organization.



Recognizing the logistical challenges but knowing the move would present significant benefits to the chapter, FHC partnered with members of the CHC, Alumnae Advisory Committee (AAC) and Executive Council to facilitate a major renovation of the vacant house. The ambitious plan was to complete the renovation and move the chapter into the space, all within nine months. Thanks to the leadership of the CHC and AAC volunteers and the flexibility of the change-ready chapter members, the goal was achieved. North Carolina Delta moved into its new and improved home just before the start of the 2018-2019 academic year, ready to create memories together and further strengthen their bonds of friendship and sisterhood.



Preparing Pi Phi Leaders for Steady Leadership In an Unsteady World

Leaders need to be confident, comfortable and agile. Earlier this year, nearly 800 Pi Phi collegiate officers and Alumnae Advisory Committee members gathered at College Weekend to cultivate and hone their leadership skills and left armed with the right tools to be effective.



"It was phenomenal to see the amazing things Pi Phi is doing and what a first-class organization looks like."





"It's easy to get overwhelmed being in a position of leadership, but this weekend showed me exactly why it is worth it. Being a Pi Phi is being a part of something so much greater than yourself and College Weekend was the perfect example of that."



"I came back from this weekend with so many new contacts. Now, I have people to turn to in a stressful situation. I'm forever grateful for this opportunity to grow closer to my chapter, AAC and the Fraternity at large."



"I really enjoyed getting to see the big picture. I loved meeting many of the Regional Team members, Directors and Grand Council members in person. I thought it was overall a very inspiring weekend and renewed my excitement in Pi Phi and volunteering."



"For the first time, I realized the scope of impact Pi Phi has by seeing Pi Phis from all over the country and seeing the magnitude of what 12 women did over 150 years ago."



"My biggest take away was that many chapters face the same issues ours does, and I have such a huge set of resources and a support system available to me."



"I feel much more confident in my role in chapter leadership, and I now have the tools to implement programs that will improve the overall morale of the chapter."

ARIZONA

Arizona Alpha, University of Arizona

What a difference a year makes! In the Spring 2018 issue, *The Arrow* shared a story about Arizona Alpha **ASHLEY MURRAY**, who had been seriously injured in a car accident. One year later, Ashley has returned to her “home away from home,” Pi Beta Phi. Here is an update on her courageous journey, as submitted by her Arizona Alpha sister, **TATE JAMESON**.

“This semester we were so blessed and fortunate to welcome back our sister, Ashley Murray. In December of 2017, Ashley was hit by a drunk driver in her hometown of Redondo Beach, California. Ashley sustained head injuries and was in a coma for 23 days. After multiple surgeries, she eventually woke up and was able to return home after five months in the hospital.

In January of 2018, the chapter house felt empty without Ashley’s bubbly personality. During the last two semesters, our fraternity and sorority community supported Ashley and our sisterhood by sending flowers, donating to her personal GoFundMe campaign and attending a prayer service at our chapter house. Other Pi Phi chapters such as California Omicron at Chapman University, California Kappa at the University of San Diego and Tennessee Gamma at the University of Tennessee used social media to write heartfelt posts of prayers and love for Ashley’s recovery. Many of these supporters did not know Ashley personally, so it was amazing to see their kindness.

Ashley has returned to the University of Arizona to complete her final semester. In May, she will graduate and receive her degree in Public Health. After



Arizona Alpha welcomes **ASHLEY MURRAY** back to campus.

graduation, Ashley will continue to receive physical therapy but still hopes to fulfill her childhood dream of becoming a registered nurse. When asked about her return to school this semester, Ashley smiled and said, 'It feels really good to be back and be able to finish school.' Our chapter could not be happier to have had our prayers answered and our angel, Ashley home.”



CALIFORNIA

California Theta, University of California - Davis

One way California Theta Chapter members connect with each other is by participating in various social causes. They particularly recognize the importance of the Women’s March. **MIKA BEKKERMAN** attended the Sacramento Women’s March for the first time in 2019 and noted, “To be able to stand among strong, independent, determined women is already powerful in itself; however, to be able to stand and march among women who you not only consider role models and powerful leaders in your community, but also friends, is indescribable.”

From left: California Thetas **EMMA HOFFMAN-DAVIES**, **MYLER LEACHMAN**, **MARINA SLOAN**, **RILEY PROHASKA** and **EMILIA BEKKERMAN**.

COLORADO*Colorado Alpha, University of Colorado - Boulder*

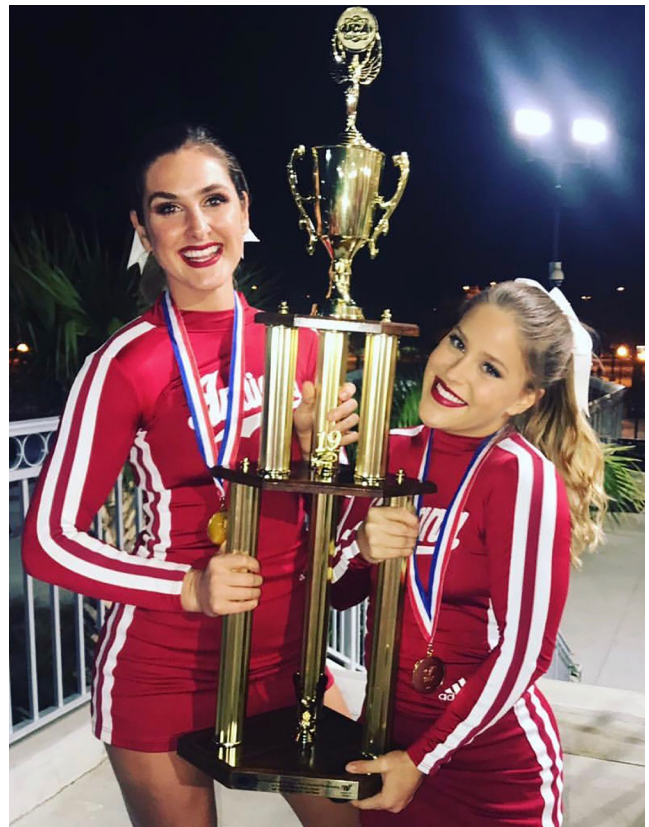
Last November, the University of Colorado's Student Government held an important election to elect new legislative representatives at large, an esteemed office representing student voices in various decisions. Among the many candidates was sophomore **MADDIE GILE**, who is also Colorado Alpha's Vice President of Philanthropy. Her campaign was based on three pillars: Sexual Assault Prevention, Safety and Transportation and Student Experience. An overwhelming volunteer base of Maddie's Pi Phi sisters supported her by tabling on campus, reposting her campaign media and spreading the word to vote for her. Maddie won with the highest number of votes recorded, and the chapter can't wait to see what she does next.

**ILLINOIS***Illinois Beta-Delta, Knox College*

Several members of Illinois Beta-Delta had the opportunity to study abroad over the fall and spring terms. **BAILEY MORSE** and **MELISSA DE LA RIVA** explored Barcelona, and **NATALIE HADDAD** took on an amazing Australian experience. **CASSIE STEAR** traveled to Sweden and **LEAH RYMER** journeyed to Morocco; currently, **HANNAH NELSON** is studying in Japan and **SYDNEY BIEBER** is visiting London. The chapter is thankful that each of these women have been able to see different parts of the world, and they enjoy the stories, education and memories the women bring back to share.

INDIANA*Indiana Beta, Indiana University*

In January, the Indiana University Crimson All-Girl Cheerleading squad won its sixth Division I-A Universal Cheerleaders Association (UCA) College National Cheerleading Championship. This competition is known to be the most prestigious college cheerleading competition in the country. Two members of the Indiana Beta Chapter, **MCKENNA RENIER** and **AVA DICKMANN**, were part of this year's winning squad. Having a strong support system in Pi Phi is something they both appreciate. "From the very beginning when my sisters learned I was a cheerleader, they immediately supported me in any way they could," said McKenna. "The support from everyone was amazing, especially when life got very busy with games and school — they were always there to help." Ava added.



Top: Colorado Alpha **MADDIE GILE** was recently elected to the university's student government.

Below, from left: Indiana Betas **AVA DICKMANN** and **MCKENNA RENIER** with the College National Cheerleading Championship trophy.



From left: Missouri Beta Pi Beta Phi and Greenleaves members **STEPHANIE LUSHNIAK, YIFEI LI, SEMHAR MEKONNEN** and **SHAYNA BOMFIN**.

Indiana Epsilon, DePauw University

The Indiana Epsilon Chapter is full of unique women who pursue their many interests passionately. One notable member is senior **SUZANNE “SUZ” PETERS**, who finished her last collegiate volleyball season as North Coast Athletic Conference Player of the Year and was selected to the Google Cloud Academic All-America® Division III Volleyball Team. She made DePauw University’s Dean’s list every semester and was recently awarded the DePauw Order of Omega Scholarship for her display of leadership, scholarship, service and character. Also noteworthy are juniors **KATE YANCY** and **KASSIDY MATTSON**, who spent last summer on campus as members of the Science Research Fellows Program. Kassidy worked alongside the director of the program in his study of rare genetic diseases, and Kate worked with the head of the neuroscience department

in his study of moral decision making in information security. All three members serve as strong role models for the chapter.

KENTUCKY

Kentucky Alpha, University of Louisville

Kentucky Alpha is proud of senior **MEAGAN GAMBREL** and sophomore **ELENA BERKENBOSCH** for the work they are doing as interns at the state capitol in Frankfort. When asked what they typically do in a day, Meagan stated, “We go to session and watch legislation get passed, help the senators on the floor if they need it and go into committee meetings during recess.” When asked about her favorite part of the internship, Elena said, “It’s incredibly cool when we get to go to sessions and watch legislation get voted on.”

Both Meagan and Elena have been active in campus, state and national politics, and they made a strong effort to get students out to vote this past November. The chapter can't wait to see their future achievements.

MICHIGAN

Michigan Gamma, Michigan State University

The Michigan Gamma Chapter is excited to host a new philanthropy event called The Halo Games. It will consist of an assortment of relay games, and the teams will be large groups from different organizations. The events are multiple relays where teams will compete up until the final four dodgeball tournament. This new event is designed to be more inclusive of both female and male organizations. Michigan Gamma's Vice President of Philanthropy **JULIA SHINE** said she is looking forward to the event because she is excited to see the fraternity and sorority community come together. Money raised will benefit Read > Lead > Achieve®.

MISSISSIPPI

Mississippi Alpha, University of Southern Mississippi

The University of Southern Mississippi recently offered a retreat for members of the fraternity and sorority community, with the objective to build better relations among the College Panhellenic Council, the Interfraternity Council and the National Panhellenic Council. Many members of the Mississippi Alpha Executive Council attended, as well as the Social Media Chair. Leaders from the organizations talked about how to become more involved with each other. The Mississippi Alpha Chapter looks forward to making real strides toward collaboration.

Mississippi Beta, University of Mississippi

Mississippi Beta senior **KAYLA VONBURG** exemplifies Philanthropic Service to Others by running a campus organization called "English Clusters." Part of the International American Student Alliance (IASA) student organization, the clusters are free, non-credit volunteer-based English classes for students who speak English as a second language. Several members from each member class in the chapter volunteered to teach. The women were excited to help the community, and each brought unique and creative ideas to the table. Kayla is thankful for the support of her sisters.

MISSOURI

Missouri Beta, Washington University in Saint Louis

Sophomore **STEPHANIE LUSHNIAK** has been elected Group Coordinator and President of the Greenleaves, Washington University's premiere, all-female a cappella group, and the second oldest a cappella group on campus. She coordinated the Fall Showcase, Green Eggs & Jam. Missouri Beta is proud to have four members in the Greenleaves alongside Stephanie.

MONTANA

Montana Alpha, Montana State University

Montana Alpha recently held its annual philanthropy event, Literacy Love. Chapter members sell roses across campus for Valentine's Day. Each rose has a fact about literacy attached, and proceeds are donated to Pi Beta Phi Foundation to support Read > Lead > Achieve.

NEW YORK

New York Delta, Cornell University

New York Delta recently welcomed 39 wonderful New Members to their chapter, despite having recruitment delayed by a week due to a fierce blizzard. New Members braved the cold and snow to attend a fabulous Candyland-themed Bid Day celebration, which included a homemade donut wall to serve as the photo background. In addition to endless sweet treats, the women celebrated with a cotton candy machine, piñata games and candy-themed competitions. They want their New Members to know what a treat their membership experience will be!

New York Deltas **KAYLA DELEUZE** and **CHASE KAUDER** celebrate Bid Day.





Above: North Carolina Delta **AVA RITTER** serves the broader Panhellenic community.

NORTH CAROLINA

North Carolina Delta, North Carolina State University
 Maintaining close relationships and creating friendships with other members of the Panhellenic Executive Council is something the North Carolina Delta Chapter prides itself on. The chapter's previous Vice President of Administration, **AVA RITTER**, recently began her role on the Panhellenic Executive Council as Vice President of Programming. She will oversee all Panhellenic programming, including planning the Outstanding Women's Awards, an awards ceremony that honors female leaders from across campus. The chapter is proud to see her represent Pi Phi's core values to the community.

SOUTH CAROLINA

South Carolina Alpha, University of South Carolina
 The women of South Carolina Alpha had a great time at their "Snow Place like Pi Phi" Bid Day! Welcoming eight New Members to the sisterhood, they made Bid Day memorable by offering winter-themed cookie decorating and a pool filled with faux snow for photo ops.

TENNESSEE

Tennessee Gamma, University of Tennessee - Knoxville
 This past fall, Tennessee Gamma **HEATHER MCDONNELL** learned she would have the opportunity to study abroad in Great Britain, as well as be a member of the Parliamentary Internship Programme for the spring semester of 2019. The chapter was excited to see her constant hard work and determination pay off. Although she is deeply missed, the chapter is thrilled for her. When asked about her time abroad, Heather said, "I've been living in London for almost three weeks, and I already love it! It's such an interesting and dynamic place, filled with so many cultures and people to experience and learn from. I'm also taking classes right now, but I am mostly excited for Parliament!"



Tennessee Gamma **HEATHER MCDONNELL** enjoys her experience studying abroad.

TEXAS*Texas Beta, Southern Methodist University*

Not only are the members of Texas Beta involved within the chapter itself, they have devoted their time to serving other campus organizations. Two members, **CASEY ADAMS** and **AVA LAMOUREUX**, were recently elected to offices on Panhellenic Council. Another member, **ABBY JOHNSON**, serves on SMU's Student Foundation and is in charge of organizing all of the school's homecoming events in the fall.

Texas Epsilon, University of North Texas

The Texas Epsilon Chapter is proud of ranking second in grades out of the eight sororities on campus for the Fall 2018 semester. The chapter has worked for several semesters to improve its academic standing and surpassed its targeted GPA goal. The women give partial credit to the facility's newly-renovated study room, which provides a space conducive to learning. The chapter is especially pleased that eight women achieved a 4.0 GPA last semester, and 15 achieved the Pi Society level of a 3.14 GPA or higher.

VIRGINIA*Virginia Zeta, Virginia Polytechnic & State University*

Virginia Zeta **JESSIE PIERCE** recently participated in the Disney College Program based in Orlando, Florida, where she learned about merchandising and guest services. Because of her initiative to gain experience in every

aspect of the program, Jessie worked at 14 merchandising locations throughout the park during the seven-month program and gained valuable experience in guest courtesy skills. Through additional co-op classes and on site seminars, she was able to hone in on her customer service and leadership skills. Previously, other Virginia Zeta members participated in the program. Recent Virginia Zeta graduate **DANI BEGGAN** was a leading example for Jessie during her application process. She provided insight on how to go about the application and what Disney looked for in the interviews. "Without her, I don't think I would have gotten the internship," Jessie said.

WASHINGTON*Washington Alpha, University of Washington*

Washington Alpha **ASHLEY TSAI** recently received the University of Washington's Barbara Probst Humanitarian Award, which recognizes a Panhellenic member who is involved in philanthropic services both within and outside the university. For many years, Ashley has interned for the non-profit organization Nuestros Pequeños Hermanos (NPH) and traveled with them to Guatemala last year to show their sponsors the work their money does. She also volunteered at a homeless shelter last year and worked with World Vision to sponsor two children in need.



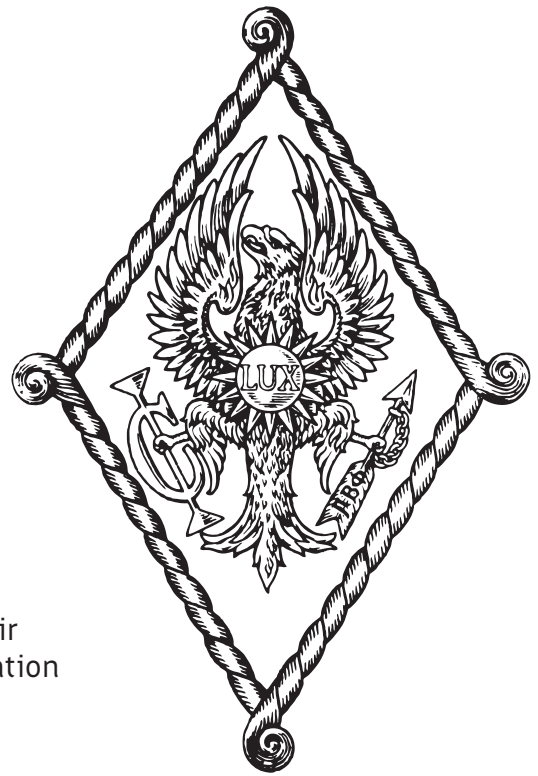
Virginia Zeta **JESSIE PIERCE** was mentored and encouraged by sisters to participate in the Disney College Program.



Washington Alpha **ASHLEY TSAI** helped at an orphanage during her internship in Guatemala.

2018 Carolyn Helman Lichtenberg Crest Award Winners are Leaders for Life

We are excited to announce our 2018 Carolyn Helman Lichtenberg Crest Award winners! The Crest Award honors Ohio Alpha **CAROLYN HELMAN LICHTENBERG**, who served Pi Beta Phi as Grand President from 1985 to 1991. These distinguished alumnae have positively impacted their communities through their professional success and dedication to community service. Congratulations, sisters!



CAROLYN HELMAN LICHTENBERG CREST AWARD FOR COMMUNITY SERVICE

CONNELL SULLIVAN BRANAN CALIFORNIA GAMMA

Connell was named National Young Mother of the Year in 2006 by American Mothers, Inc., an organization dedicated to improving the lives of mothers and children around the world. Currently, she serves as president of their board of directors and is their representative to the United Nations. Additionally, Connell has served and continues to serve the state of Oklahoma and Oklahoma City, chairing several fundraising events and serving on various boards.

"I believe it is much better to give than to receive, and that everyone has something to contribute to their community no matter how big or small," says Connell. "I have been surrounded by lifelong friends who wear the arrow and who embody the Pi Phi values. They have significantly enriched my life and made a positive difference in the lives of others, and for all of that, I am eternally grateful."



SHEILA CONSAUL, ILLINOIS THETA

Sheila makes the world a better place through her dedication to community service. She volunteers with her golden retriever, Lucy, at Walter Reed National Military Medical Center and travels to locations devastated by disasters to provide comfort to the people impacted. Sheila also volunteers with literacy projects and international sporting events, such as the Olympics and Major League Baseball All-Star Games.

“It is incredibly special to me to win this award as I knew Carolyn personally,” says Sheila. “Even from my early days as a New Member, Pi Phi emphasized community service as part of the foundation of the organization, and I took that to heart. Giving back is the most rewarding thing I do, and I encourage every sister to participate in community service activities that mean something to her.”

NICOLE KHOURY, MICHIGAN ALPHA

In 2008, Nicole created Project iAm, a not-for-profit corporation that provides financial assistance to families living with autism in the Toledo, Ohio, area. The assistance goes toward their educational and therapeutic needs, and Project iAm has distributed more than \$200,000 in the form of grants and scholarships. Nicole helped organize and continues to support the Carly Cares Foundation, an organization which provides care packages to pediatric cancer patients. She is also a cofounder and board member of the Pride of Toledo Foundation, and a volunteer mentor to single mothers trying to complete their education.

“It’s hard to describe what it feels like when you see the joy you bring to others through community service,” explains Nicole. “Knowing you have changed even one person’s life will stay with you forever. So, I’m absolutely flattered to receive this award and humbled that my community service work would be recognized by anyone, let alone by those who I hold in such high regard.”

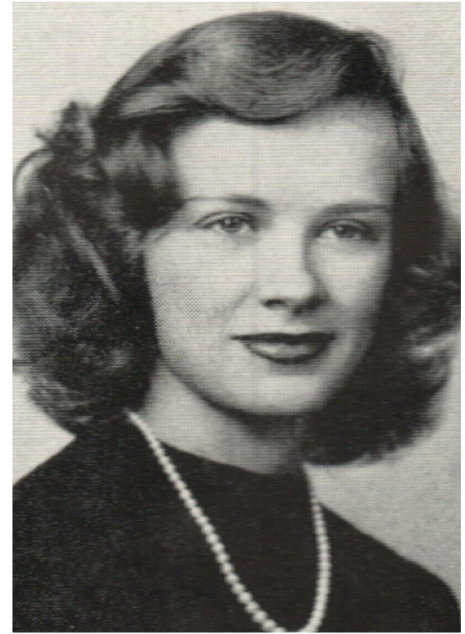


CAROLYN HELMAN LICHTENBERG CREST AWARD FOR PROFESSIONAL ACHIEVEMENT

JOSEPHINE “JO” BOWERS THOMS, MICHIGAN ALPHA

Jo’s paintings, illustrations and sculptures have been professionally recognized throughout the decades since 1945 when she was awarded the National Academy of Design Suydam Medal for Sculpture just after her college graduation. Most recently, she was added to the list of Who’s Who in Lifetime Achievement in 2017, recognizing her for nearly 75 years of artistic pursuit.

“The Michigan Alpha Virtual Alumnae Group is excited to nominate one of our oldest-living alumnae in recognition of her lifetime of professional achievements as an artist. Jo’s a remarkably creative person and has been distinguished by her peers for her work throughout her entire life.”



JULIA BUCKINGHAM EDELMANN, ARIZONA ALPHA

After establishing herself in the interior design and décor industry, Julia started her own company, Buckingham Interiors + Design LLC, in 2007. She’s garnered national recognition as a trendsetter and color expert, serving as contributor to *Traditional Home* magazine’s Color Master Classes and has partnered with The Kohler Company, Cosentino and Benjamin Moore to create a designer kitchen and a vignette in New York City for DIFFA Dining by Design. She’s also authored *Modernique*, a guide for all who crave the elegance and ease of modern style combined with the warmth of tradition.

“To be awarded from the Fraternity that launched my goals and dreams to become an entrepreneur and “girl boss” is one of the most profound and meaningful honors in my career,” says Julia. “My experience in Pi Phi led me to be the best mother I could be and helped me transition from raising children to becoming a business leader without worrying that I may fail.”



ANN WEILER RHOADES NEW MEXICO ALPHA

Ann has more than 40 years of leadership experience, having served as an executive for several large organizations. She is the founder and president of People Ink, and is also a widely-respected speaker and the author of *Built on Values; Creating an Enviably Culture that Outperforms the Competition*.

“There are so many talented sisters that just to be nominated for this award is such an incredible compliment,” says Ann. “Sisterhood in Pi Phi is one of life’s greatest blessings. It means assisting when we need help, celebrating when we achieve greatness and caring about each other throughout our lifetimes. I met my best friend during recruitment, and she’s been by my side throughout the past 50-plus years!”



PAMELA HATFIELD GEMMER, COLORADO BETA (awarded posthumously)

Pam’s expertise and passion for bilingual literacy work was extensive. In addition to teaching Spanish and English as a Second Language for 42 years, Pam volunteered in various capacities for many community service organizations throughout her life. At the time of her death, she was involved with more than 10 organizations that she had either founded or to which she was making significant leadership contributions. Her work and advocacy were recognized by many, and she was named Champion in Diversity by the Indianapolis Mexican Consulate in 2017. At a memorial service, Pam’s impact on others was undeniable as many people delivered eulogies describing how she had personally helped them and/or positively influenced their careers.

According to the Pi Beta Phi Alumnae Club of Indianapolis, “Pam was always a most loyal, dependable volunteer year in and year out. She took on many leadership roles in education locally and nationally and in various immigrant welcome and Spanish language and culture organizations. It turns out that most of those activities were connected to literacy and bilingual literacy.”

ALBERTA

Calgary Pi Beta Phi Alumnae Club

Alberta Alpha **IONA SHAW** was recently honored when she was named the Pioneer Lady of the Year for 2019 by the Southern Alberta Pioneers and Descendants (SAPD). She became their goodwill ambassador and chief hostess. Membership in the organization is open to descendants of courageous pioneers who arrived in Alberta before December 31, 1890.

ARIZONA

Phoenix, Arizona, Alumnae Club

The Phoenix club filled 100 shifts with area Pi Phis and their friends and family to support Phoenix Panhellenic's annual involvement with the Waste Management Phoenix Open featuring golfers from the PGA Tour. Pi Phi volunteered to help serve concessions, check in volunteers and escort people between the

volunteer compound and the concession tents. Each shift earned about \$70 in scholarship donations for Phoenix Panhellenic, which they use each year to give scholarships to undergraduate and alumnae women attending Arizona universities.

CALIFORNIA

South Coast, California, Alumnae Club

Members of the South Coast Alumnae Club met for dinner in January to unwind after a long day of work. The women welcomed a few new sisters into the club and enjoyed the atmosphere of Italian restaurant Il Fornaio in Irvine, California.

North San Diego County, California, Alumnae Club

Pi Beta Phi North San Diego County Alumnae Club members enjoyed wrapping Christmas gifts at Vista Hill for the Parent Care program in San Diego. The clients are mothers with substance abuse and mental health issues. For several years, the club has wrapped gifts that Santa distributes at Vista Hill's annual Children's Christmas Party.

FLORIDA

Naples, Florida, Alumnae Club

For its annual Monmouth Duo luncheon, the Naples club was extremely fortunate to have **MARGARET "PEGGY" HRBERSTROH CIFRINO**, West Virginia Alpha, as the guest speaker. Peggy flew in from Washington, D.C., at the request of her friend, **JOANN SPENCER SIEGRIST**, West Virginia Alpha. Peggy has worked for General Colin L. Powell since 1993, serving as his executive assistant, traveling with him both abroad and domestically, and assisting him as he wrote his two best-selling books. She currently is his principal assistant. To read more about Peggy and her fascinating life, visit www.piphiblog.org.

GEORGIA

Atlanta, Georgia, Alumnae Club

The Atlanta Alumnae Club's winter fundraiser with Reach Out and Read - Georgia (ROR-GA) was extremely successful. ROR-GA, a small but mighty organization, raised \$24,228 and was crowned the winner of the 2018 Atlanta Festival of Holiday Trees. Indiana Gamma **CAMI SLABY NAIL**, a ROR-GA board member, led the project from start to finish, and many club members helped make ornaments, decorated the holiday tree and donated time and money.



From left, Phoenix club members Nebraska Beta **GINA GARRISON JONES**, New Mexico Beta **HEATHER WILSON MILLER**, Arizona Alpha **HEATHER BROOKHART PEEVYHOUSE**, Washington Alpha **SUZANNE MILLER** and Ohio Zeta **KIM O'BRIEN**.



Above, from left: South Coast, California, Alumnae Club members Wyoming Alpha **LAURA FITZGERALD**, Virginia Zeta **ANNIE SKORALSKI**, California Gamma **ANNE HOOVER**, Colorado Alpha **DAWNIELLE KELLEY**, Arizona Beta **MARJORIE MANNING**, Indiana Gamma **KATHERINE SHANNON**, California Gamma **DANA MEDLOFF** and California Eta **DONNA ROMERO**.

ILLINOIS

Chicago-Windy City Alumnae Club

The Windy City Pi Beta Phi Alumnae Club recently teamed up with the Justinian Society of Lawyers to host a Casino Night gala with proceeds benefitting the Justinian Children's Endowment Fund. Funds also went toward funding the Windy City's Pi Phi literacy initiatives as part of the club's milestone celebration of 30 years in Chicago.

INDIANA

Indianapolis, Indiana, Alumnae Club

MARIBETH ZAY FISCHER, Indiana Gamma, was the Chairman for the Indianapolis Alumnae Club's annual holiday luncheon. The event was held at the James Whitcomb Riley House in the historic Lockerbie Square neighborhood of Indianapolis. The Riley House is a National Historic Landmark, offering a glimpse into the life of the great Hoosier poet. The fun and educational lunch concluded after the group sang "Ring, Ching, Ching."



Above: Four West Virginia Alpha alumnae were in attendance at the Naples, Florida, Monmouth Duo luncheon. From left, **JAN MAIOCCO**, **MO SCHWENDENER**, luncheon keynote speaker **PEGGY CIFRINO** and **JOANN SIEGRIST**. Peggy will be honored as a Member of Distinction this summer at Convention 2019.

KANSAS

Greater Kansas City Alumnae Club

The Greater Kansas City Alumnae Club (GKCAC) recently collaborated with the local Kappa Kappa Gamma Alumnae Club's 67th Annual Holiday Homes Tour. The tour is a well-known and highly-attended event in the area, and this was the first year of Pi Phi's involvement. GKCAC volunteers helped staff the homes as tour hostesses, promoted literacy and collected books for distribution to children in need. The club plans to continue this event after finding it to be a wonderful way to support literacy causes and promote Panhellenic sisterhood.

LOUISIANA

Baton Rouge, Louisiana, Alumnae Club

Baton Rouge club members celebrated the holidays at the Louisiana Beta Chapter house on the campus of Louisiana State University. In addition to sharing delicious food, wonderful stories and a spirited angel exchange game, alumnae also wrote notes to the Louisiana Beta Chapter members. The notes were presented to the chapter in January, and the chapter chose to post the notes for all to read!

MICHIGAN

Bloomfield Hills, Michigan, Alumnae Club

The Bloomfield Hills Alumnae Club enjoyed a holiday luncheon with its members. Stories were told, Pi Phi songs were sung and great food was enjoyed. A collection of books was gathered to benefit Children's Hospital of Michigan.

MISSISSIPPI

Jackson, Mississippi, Metro Alumnae Club

For the 2018 holiday season, the Jackson Metro Alumnae Club (JMAC) collected over 1,000 toiletry items from its members and friends to donate to Catholic Charities of Jackson, Mississippi. Spearheaded by JMAC's philanthropy chair, **CARRIE TILLEY SNYDER**, Mississippi Alpha, the club started collecting items in Fall 2018 at their meetings and socials. Carrie personally delivered the items to Catholic Charities, and they were thrilled to receive the donation.

Mississippi Gulf Coast Alumnae Club

The Mississippi Gulf Coast Club is partnering with the Moore Community House Early Head Start Program in Biloxi, Mississippi, to provide books, promote



Mississippi Gulf Coast alumnae donated books and read to children. From left, Josephine Bradley and Mary Harrington from Moore Community House Early Head State Program with Mississippi Alphas **DAISHA WALKER**, **BETSY DRURY KOURKOUNIS**, Club President **CATHY BREAUX PATTON** and **KATHRYN SCHLEDWITZ LEWIS**.

literacy, volunteer to read and promote storytelling. The program provides early-childhood education, and health and family support services, to low-income families and recently received an FDS500 grant from Pi Beta Phi.

OKLAHOMA

Tulsa, Oklahoma, Alumnae Club

The Tulsa Alumnae Club raised over \$1,000 for Women in Recovery. The money was used to purchase books and games to give to 22 children at the Women in Recovery Christmas Party. Women in Recovery is an intensive outpatient alternative for eligible women facing long prison sentences for drug-related offenses.

SOUTH CAROLINA

Columbia, South Carolina, Alumnae Club

Columbia, South Carolina, alumnae and friends enjoyed a colorful fall walking and tasting tour in the city's historic Vista District. The tour was hosted by Two Gals and a Fork, a women-owned business featuring a trained and certified tour guide plus tasting stops at six restaurants in the district. The guide shared often-overlooked colorful tidbits about Columbia's rich

history, linking historical information to each food stop. Two Gals and a Fork food stops provided tastings of everything from shrimp and grits to barbecue to profiteroles. Club members agreed that they left stuffed with delicious food and full of fun, historical facts.

TENNESSEE

Chattanooga, Tennessee, Alumnae Club

The Chattanooga Club is proud to support its philanthropy, Room in the Inn — a facility that gives refuge to homeless women and children. Each February, the club collects and donates books to the shelter. However, this year the collection of donations started a little early and was of a different kind! After learning that the shelter was in dire need of basic items, Pi Phis brought essentials such as toilet paper, paper towels, diapers and cleaning products to the club's January luncheon.

Knoxville, Tennessee, Alumnae Club

During the recent government shutdown, Knoxville-area food banks were running low on donations. Florida Alpha **RHONI MIDDEN BASDEN**, Executive Director of Girls Inc of Tennessee Valley, received many calls from families distressed over how to feed their children. Rhoni



Baton Rouge Alumnae Christmas Party and Angel Ornament Exchange.



Lindsay Crawford from Women in Recovery (second from left) receives donations from Oklahoma Betas **KRISTYIE GARRETT MCKINNEY, BEVERLY CREGG SCHAFER** and **LYNN RIDGE PEACHER**.



Members of the Cypress Creek-Northwest Houston, Texas, Alumnae Club gather for their holiday party.

and some other board members who are Pi Phis spread the word to the Knoxville club and the local Tennessee Gamma Chapter, resulting in a donation of more than 200 cans of non-perishable food items.

Nashville, Tennessee, Alumnae Club

Christmas Village is one of the oldest charitable events in Nashville, supported and run entirely by volunteers from the Nashville Pi Beta Phi Alumnae Club. The 58th annual Christmas Village was wildly successful and raised a record-breaking \$683,000 for beneficiaries, including Pi Beta Phi Foundation, contributing to over \$12 million donated to date!

TEXAS

Cypress Creek-Northwest Houston, Texas, Alumnae Club

The club held its Christmas party on the evening former President George H.W. Bush's funeral train passed through town on its way to the Presidential Library at Texas A&M University. Many club members went to the tracks to pay their respects. They each wore "Barbara Bush pearls" in honor of former First Lady **BARBARA BUSH**, Texas Eta.



From left, Laura Womack, Executive Director of the Fairgrounds Nashville, Michael de Riesthal, Director, Pi Beta Phi Rehabilitation Center, Mississippi Alpha **KELLY BAKER STANFORD**, Mississippi Beta **KLAIRE FITZGERALD POWERS**, Bill May, Executive Director of Arrowmont School of Arts and Crafts and Mississippi Beta **KENDRA GODDARD MELNYK**.



Members of the Seattle, Washington Alumnae Club at their annual Discovery Gala.

Dallas, Texas, Alumnae Club

Pi Phi sponsored a Holiday Food Drive honoring the late revered philanthropist and beloved sister **RUTH COLLINS ALTSHULER**, Texas Beta. Items collected included canned goods, non-perishables and special holiday items benefiting local agencies serving families in need. Ruth — winner of the Pi Beta Phi Member of Distinction Award in 2015 — passed away in 2017, but her philanthropic legacy continues.

McKinney Area, Texas, Alumnae Club

In December, members of the McKinney, Texas Area Alumnae Club gathered at the home of **TRACY NEVILL LINCK**, Texas Epsilon, and her daughter, **ABIGAIL LINCK**, Arkansas Alpha, to celebrate area undergraduates and their mothers with a cookie exchange. Over 30 alumnae, collegians and their mothers gathered for friendship and merriment.

TORONTO

Toronto Area Alumnae Club

The Toronto Area Alumnae Club recently teamed up with CycleBar to host its annual fundraiser for Arrow in the Arctic. Participants were able to partake in an energizing spin class, as well as support Canada's northern library system. A portion of every ticket went directly to Arrow in the Arctic. Members who were unable to attend were able to donate to the fundraiser online. The event was very successful and a lot of fun!

VIRGINIA

Northern Virginia Alumnae Club

To celebrate the winter holidays, the Northern Virginia Alumnae Club gathered donations that went to So Others Might Eat, a nonprofit organization in Washington, D.C. that exists to help those in need in the United States capital. Donations provided groceries so families could make a Thanksgiving meal. Several club members also volunteered the week before Thanksgiving to distribute groceries to families needing a little extra help during the holiday season.

WASHINGTON

Seattle, Washington, Alumnae Club

California Theta **AMANDA GOLL** joined President and CEO of Northwest Kidney Centers, **JOYCE JACKSON**, Pennsylvania Epsilon, at the 2018 Discovery Gala. Amanda, President of the Seattle Alumnae Club, has volunteered with Northwest Kidney Centers since 2001 and has been involved in many aspects of the organization. Joyce has been President and CEO of the organization since 1998. In Fall 2018, the Gala successfully raised over \$759,000 which will be used specifically toward kidney research.



LEFT BRAIN OR **RIGHT BRAIN**
HEELS OR FLATS
iPHONE OR ANDROID
 INTROVERT OR **EXTRAVERT**

Joann Spencer Siegrist

WEST VIRGINIA ALPHA

HOW DID YOU BUILD SUCH AN INTERESTING CAREER?

I earned a Bachelor of Fine Arts degree from the West Virginia University (WVU) and a Master of Fine Arts degree from the University of Georgia. Shortly after graduation, I took a position as coordinator of the Puppet Mobile, a special project funded by WVU, where I would travel with WVU students and visited all 55 West Virginia counties to perform puppetry shows. Intrigued by the work, I attended a workshop led by Jim Henson and was inspired. This directed me to a faculty position at the WVU in the College of Creative Arts. I first taught a puppetry class, but that soon grew into a full curriculum allowing a WVU student to major in puppetry — one of the three degree programs in the United States. After nearly 40 years of teaching, I retired — but still perform with my puppets around the United States and abroad.

WHAT'S THE BEST PLACE YOUR PUPPETS HAVE TAKEN YOU?

I was honored to join Pi Phi sister and First Lady Barbara Bush to promote the READ America campaign. Rex and Rita Saurus (two of my puppets) and I performed on “Good Morning America” and at the Smithsonian Institute in Washington, D.C., to support the First Lady’s literacy efforts.

HOW DO YOU STAY INVOLVED WITH PI PHI?

I’m proud of my membership and proudly tell others I’m a Pi Beta Phi. I am a member of the Naples, Florida, Pi Beta Phi Alumnae Club and Naples Alumnae Panhellenic and previously served as the Chairman of the West Virginia Alpha Alumnae Advisory Committee.

BEST ADVICE YOU’VE EVER RECEIVED?

Never give up and point your arrow high!

WHAT IS YOUR FAVORITE QUOTE?

My mother wrote me when I was in middle school advice I still treasure today: “Use your heart to help others. Use your head for happiness.” ←

JOANN AND HER PUPPETS WILL PERFORM AT PI BETA PHI’S 72ND BIENNIAL CONVENTION THIS SUMMER! TURN TO PAGE 40 TO READ MORE ABOUT CONVENTION.

Overcoming Challenges of the Past, Present and Future

By **FRAN DESIMONE BECQUE**, New York Alpha

While the acronym VUCA is new to some, Pi Beta Phi has faced volatility, uncertainty, complexity and ambiguity throughout its history. Pi Beta Phi and Kappa Kappa Gamma, the “Monmouth Duo,” were founded at Monmouth College in Monmouth, Illinois. The institution was established in 1853 by the Second Presbytery of Illinois, a part of the Associate Reformed Presbyterian Church. Pi Beta Phi came to life on April 28, 1867, and Kappa Kappa Gamma followed on October 13, 1870.

It’s amazing that Pi Phi and Kappa exist today. In June of 1874, the Monmouth College Senate, under pressure from some sections of the United Presbyterian Church, upon whose members the institution relied for funding, passed a resolution banning fraternities. It had little impact at first, but pressure from devout Presbyterians grew, and the loss of their donations threatened Monmouth College’s existence. In the late 1870s, the fraternities bowed to pressure and disbanded, although Pi Phi continued to exist secretly for a time.

Luckily, Pi Phi and Kappa had grown enough to withstand the loss of their Alpha chapters, in which power was typically vested. At Convention 1884, the Alpha chapter was asked to surrender its charter, and a Grand Council was established to govern the organization.

Anti-fraternity sentiment like that encountered at Monmouth College has been a reality since our founding. It has claimed a number of thriving chapters including Pennsylvania Alpha at Swarthmore College, Ohio Gamma at Wooster College, New York Beta at Barnard College and Maryland Alpha at Goucher College, to name a few.

The two World Wars and the restrictions imposed by these national emergencies affected our organization, too. Convention 1917, which was planned to celebrate our first 50 years, was abruptly cancelled due to the country’s involvement in World War I. The celebration took place a year later in 1918. World War II restrictions caused a gap in our biennial meeting, and the 1942 and 1944 Conventions did not take place. Chapters that were installed during the war years, notably Connecticut Alpha, had to contend with gas, sugar and meat rationing during their installation festivities.

The campus turmoil of the late 1960s and early 1970s presented challenges for which Pi Phi had to adapt. Title IX of the Education Amendments of 1972 was originally interpreted by the federal administration in a way which could have threatened the existence of single-sex fraternities and sororities. In 1974, before that interpretation could be put into effect, responding to the concerted effort by many in the fraternity and sorority world, Congress made it clear that the Title IX prohibition against sex discrimination in education was not intended to interfere in the membership practices of social fraternities and sororities, preserving sorority life for future generations of women. And yet, our right to exist as a single sex organization has been challenged most recently at Harvard University. The four NPC groups were given a choice to become coeducational or have chapter members excluded from certain college honors and fellowship opportunities.

Kappa Alpha Theta, Kappa Kappa Gamma, Delta Gamma and Alpha Phi are no longer active on the campus. Pi Phi stands with our NPC sisters in objecting to Harvard’s treatment of these chapters.

Perhaps there is some relief in knowing that Pi Phi has navigated volatility in the past. Perhaps there is angst in understanding that Pi Phi, like our interfraternal friends, continues to address complexity. Regardless, as we celebrate Founders’ Day, know that Pi Beta Phi exists today due to our sisterhood’s ability to overcome obstacles. May we call upon the strength of our sisters who have come before us as we face today’s uncertainty and ambiguity. Just as those sisters did, may we emerge stronger, and even more committed to our values, for having faced the challenges. ◀



NELL CUSTER (SWISHER), Iowa Zeta, was a collegian when she presided at the 1884 Convention and asked for the charter from the Alpha chapter. She was the first to hold the title of Grand President.



UNTAN



WIGGLING

A **VUCA** WORLD

How Pi Phis are surviving and thriving in a **volatile, uncertain, complex and ambiguous** landscape

WHAT IS VUCA?

VOLATILITY:

A state of instability characterized by unexpected, rapid, drastic shifts; massive change at a frenetic pace.

UNCERTAINTY:

The confidence with which we can predict the outcomes of the decisions we make.

COMPLEXITY:

The variety of factors we need to consider and how interconnected they are; the more factors and the greater their interconnectedness, the more complex the environment is.

AMBIGUITY:

The ability to interpret a situation; incomplete or contradictory information may cause us to misread the situation.

We all have days when we feel like we're unraveling and being pulled in a dozen different directions or days when nothing goes according to plan. We may even feel like those days have become the norm more than the exception. That's because they probably have. Welcome to life in a VUCA world, where conditions are Volatile, Uncertain, Complex and Ambiguous. This way of life impacts each of us — be it personally, professionally or as a member of Pi Beta Phi.

The notion of VUCA originated within the U.S. Army War College to describe the changing nature of warfare due to globalization and the Information Age, with mentions as far back as 1987. Since then, VUCA has been applied to the business world — and even life in general — to describe the unpredictable, fast-paced, ever-changing world in which we live. So, while the VUCA concept is not new, its impact is being felt more prevalently than ever. Organizations such as Pi Phi need to plan for and react to external factors differently than in the past.

According to Georgia Alpha **LISA MASTERS**, the global head of learning and development at a large financial services institution and Pi Phi's Leadership Development Officer, VUCA is here to stay. "Globalization, rapid technology advancements, using social media to discuss



Georgia Alpha **LISA MASTERS** provides Pi Phi with expertise in navigating VUCA by serving as the Fraternity's Leadership Development Officer.

VUCA SURVIVAL TIPS FOR PI PHIS

VUCA impacts each of us every day — whether we recognize it or not. Lisa offers some tips to help us survive and thrive in a VUCA world.

TAKE CARE OF YOURSELF TO MAINTAIN YOUR RESILIENCE

Deliberately create time and space to think, relieve stress and relax — and do it routinely. Whether through exercise, reading or whatever works for you, it's often in these moments that you'll break through a problem.

BE INCLUSIVE

Surround yourself with different perspectives and divergent views. Seek contrary evidence for your opinions and force yourself to argue the other side of a situation before you make an important decision.

PLAN BUT BE FLEXIBLE

Things beyond our individual control impact us every day. Striking the balance between having a plan and being able to adjust in the moment is key. Plan some “white space” in your calendar each day to give yourself more flexibility to deal with the unexpected.

world issues, and the massive amount of information available at our fingertips every day have permanently changed the landscape and are just some of the reasons why VUCA is the new norm,” she says.

Lisa leads biennial strategic planning conversations for Pi Phi. She introduced the VUCA concept to Grand Council and senior Headquarters staff in 2017 to help guide decisions and make sure the strategic plan was developed with VUCA in mind. “It's critically important to understand the external environment in which we're operating to make the best decisions and plan the best strategies for achieving our goals,” explains Lisa. “In a VUCA environment, problems that appear familiar on the surface may require very different solutions than those that worked in the past.”

With that in mind, Pi Phi is working to understand and address some of the current external factors contributing to the VUCA environment within our industry — some of which are:

- an overall decline in sorority memberships due to decreasing college enrollment numbers;
- an increase in students who don't have financial

means to join a sorority and more students who don't feel they have time to dedicate to a sorority, primarily due to work commitments;

- lawsuits against single-sex organizations threatening our right to assemble as sorority women and university-imposed sanctions punishing students who are members of single-sex organizations;
- competitive housing opportunities on, or near, today's college campuses that compete with the value of living in a chapter home; and
- busy and working alumnae who have limited time to volunteer for Pi Phi or engage in club activities.

“To thrive as individuals and as an organization, it's important to understand the forces shaping the environment around us,” said Lisa. “These forces have important implications for us, both in terms of challenges and opportunities.” Success in a VUCA world requires very clear purpose, direction and values to guide decision-making in complex and uncertain situations. Although the conditions are complicated, Pi Phi's core values, mission and strategic plan enable us to be well-positioned to successfully sort through the new normal that is our VUCA world. ◀

GOING THE DISTANCE IN MORE WAYS THAN ONE



Above: Members of the Washington Beta Chapter's AAC and the Chapter House Corporation President gathered to celebrate Founders' Day. Front, from left: **KATHY JOHNSON HULBERT**, **STEPHANIE SWANLUND COCHRANE**, **JENNIFER LAMOTTE GERETY**, **KYM HERSHEY DAVID**, and **KRIS STOCKER BROWN**. Back, from left: **JESSICA MANNING HOOPER**, **SUSIE BLAKE LANE** and **CARLA LILES PERCIVAL**.

One of the keys to navigating a VUCA world is understanding how the forces shaping our environment present opportunities as well as challenges. Another key is understanding that familiar problems may require new and innovative solutions versus what has worked in the past. In 2014, the Washington Beta Chapter recolonized at Washington State University, which is located in the remote city of Pullman. Knowing that solid support from an Alumnae Advisory Committee (AAC) is key to a chapter's success, some alumnae were thrilled at the chance to serve on the chapter's AAC. And for the past several years, they've overcome an external force that could have hindered their efforts — none of them live in or near Pullman.

JESSICA MANNING HOOPER, Washington Beta, has been part of the AAC since recolonization and currently serves as the advisor to both the Vice President of Membership and the New Member Coordinator. "The closest AAC members are more than an hour away while others of us live anywhere from three to seven hours away," said Jessica. "We even have one member in California," she added.

The physical distance between the AAC members and Pullman — as well as among the AAC members themselves — requires a creative and innovative approach. To keep connected to each other and to the undergraduate members, they use a variety of technology tools and platforms. "We're mindful of using applications that resonate with the collegians," said Jessica.

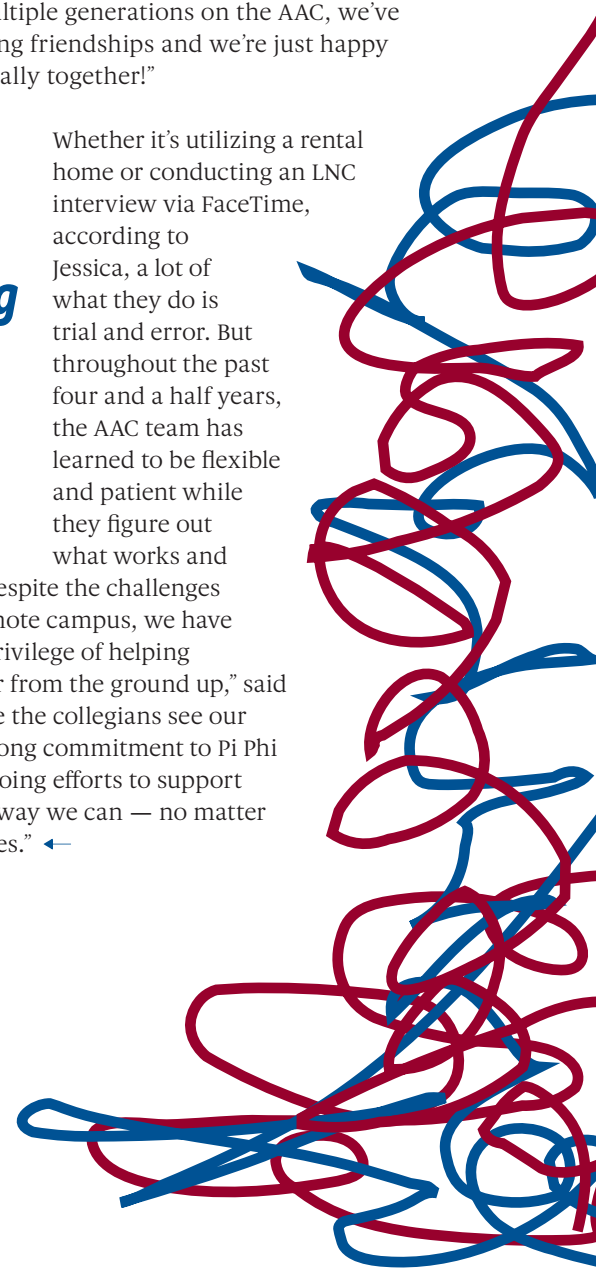
The AAC members have weekly one-on-one meetings with their Executive Council counterparts, and they primarily utilize Apple's FaceTime for their meetings. For their monthly AAC/Executive Council meetings, they use Zoom, a remote conferencing communications software that combines video conferencing, online meetings, chat and mobile collaboration technology. They also use Skype or FaceTime to participate in Leadership and Nominating

Committee (LNC) interviews, New Member interviews and any other meetings where multiple AAC members need to be present.

Despite the distance, the AAC members do their best to be present at chapter meetings and events such as initiation in the fall and Founders' Day in the spring, and they make the most out of their time together. "We are purposeful about having face-to-face time with the chapter members when we're in Pullman. We sleep on air mattresses in the guest room of the chapter house, or we rent a home through VRBO nearby and use it as a base to regroup and recharge," said Jessica. "Regardless, it's an awesome experience because we have sisters representing multiple generations on the AAC, we've developed lifelong friendships and we're just happy when we're actually together!"

"We hope the collegians see our passion and lifelong commitment to Pi Phi through our ongoing efforts..."

Whether it's utilizing a rental home or conducting an LNC interview via FaceTime, according to Jessica, a lot of what they do is trial and error. But throughout the past four and a half years, the AAC team has learned to be flexible and patient while they figure out what works and what doesn't. "Despite the challenges of advising a remote campus, we have the honor and privilege of helping rebuild a chapter from the ground up," said Jessica. "We hope the collegians see our passion and lifelong commitment to Pi Phi through our ongoing efforts to support the chapter any way we can — no matter the circumstances." ◀



STAYING OPEN TO POSSIBILITY IN A VUCA WORLD

Strong leadership qualities are essential for survival in a VUCA environment. Building "softer" leadership skills — agility, flexibility, positivity and personal resilience — can ensure we thrive in an uncertain world. Tennessee Gamma **KELLEY GOLDEN**'s ability to adapt and reframe challenges as opportunities has helped her turn life's twists and turns into incredible impact. It's also helped her discover her passion for empowering other Pi Phi leaders.

As a college freshman, Kelley found herself at the University of Tennessee in unfamiliar surroundings — knowing nobody on campus and separated from her Boston home by hundreds of miles and distinct cultural differences. Although she knew little about fraternity and sorority life, Kelley's roommate convinced her to participate in recruitment. Kelley joined the Tennessee Gamma Chapter after connecting with a fellow Massachusetts native in Pi Phi. When chapter elections didn't go the way she planned, Kelley acted on the advice of Pi Phi's Panhellenic delegate and opened the door to a new opportunity.

"Everyone has a path, and Panhellenic was mine," she says. "I was the only freshman involved in fraternity and sorority governing bodies on our campus. My sophomore year, I was director of Greek Week, and I went on to serve as Panhellenic President my senior year." At the same time, Tennessee Gamma was receiving chapter support, and Kelley knew she could contribute to the chapter's success by promoting Pi Phi on campus. "In an uncertain environment like chapter probation, you need to strengthen your relationships internally and externally," she says. "I connected Pi Phi to the campus community in a bigger-picture role. I had a big voice, so I knew I could bring a lot of people along and create new avenues for women in our chapter to get involved."

Because her collegiate involvement was mostly outside of her chapter, Kelley saw the Leadership Development Consultant (LDC) program as a special opportunity to engage with Pi Phi after graduation. "I felt I could make an impact using my campus leadership skills and what I'd learned as a member of a chapter on probation," she recalls. Kelley was selected as the second-year Resident LDC for the North Carolina Delta Chapter at North Carolina State University and put her experience to work strengthening the chapter's presence on campus. Despite her expertise in leadership and relationship building, Kelley felt a sharp learning curve when it came to chapter operations. "I'd never held a position within a chapter, and realized I was pretty naive in the area of chapter management," she said. "I didn't know what I didn't know."

Fortunately, South Carolina Alpha **SARAH RUTH "SIS" MULLIS** was our Chapter Assistance Officer, and she created a 'safe zone' for me to learn."

"We need to give these women the tools they need to succeed."

The connections Kelley established during her LDC year later helped her career gain momentum. Introductions and recommendations from alumnae, such as Texas Beta **ANA MANCEBO MILLER**, helped open doors to jobs in the healthcare and financial services and tech sectors. Along the way, she served Pi Phi in numerous roles, including extension and recruitment

assistance, Chapter Support Officer, Alumnae Advisory Committee (AAC) member and Collegiate Regional Operations/Advisor Specialist for Region 9. "Staying connected with Pi Phi as an alumna has given me constant opportunity for learning and growth as a volunteer," she says. "I've learned to lead a team, make mistakes and hold people accountable — all valuable lessons that apply in different areas."

Her volunteer service helped Kelley discover and nurture her personal Pi Phi passion: ensuring more



Pi Phi members have access to leadership development opportunities. When the **SHINE THROUGH** campaign launched, Kelley felt the time was right to make an impact. "The campaign is a major investment in our members," she says. "It's the right time to think about Pi Phi's future, and the right time for me to give back." After learning that her own chapter already had several funds established, Kelley steered her gift in a creative direction — and one that would make a difference for Pi Phi overall. "Our newer and smaller chapters often don't have the financial resources to send women to Pi Phi leadership development training, or at best, can afford to send only a few elected leaders," she points out. "In those chapters, there are women like me, who don't hold a traditional elected office but who would benefit tremendously from Pi Phi's training experiences. Those chapters need to grow their leaders to grow their membership and grow their campus presence. I found myself wondering what more I could have accomplished as a collegian if I'd had the opportunity. Then I started thinking about the women of North Carolina Delta."

For Kelley, the connection just made sense. She helped establish the chapter and knew a dedicated fund could help the chapter's financial ability to grow more leaders. Kelley created the North Carolina Delta Chapter Leadership Education Expendable (CLEE) fund to open more doors for emerging Pi Phi leaders. CLEE funds provide financial support for chapter members to attend Pi Phi leadership training opportunities like Pi Beta Phi Leadership Institute, College Weekend and convention and also can be used to provide leadership education for the entire chapter. To date, the CLEE fund established by Kelley is North Carolina Delta's only dedicated fund — and it's available for anyone who wishes to donate.

"More exposure to leadership training — and more opportunities for leadership development — creates better women, leaders and mentors," Kelley says. "To me, leadership is needed in all facets of organizations, and that includes Pi Phi. You don't need an officer's title to lead others. You just need to articulate the values and purpose of our sisterhood and rally people to join you. It's important that we invest in our elected leaders, but I believe we have a true untapped resource in our unelected,



Above, from left: Michigan Gammas **REBECCA RUHLMAN** and Pi Beta Phi Foundation Executive Director, **HALLEE WINNIE**, Tennessee Gamma **KELLEY GOLDEN** and Oklahoma Alpha **JESSICA MARIE FREEMAN** at a Halo Happenings event. All served Pi Beta Phi as Leadership Development Consultants.

untitled leaders. We need to give these women the tools they need to succeed, especially at chapters without deep resources. We're doing our entire sisterhood a disservice if our leadership development opportunities only reach women from our oldest and largest chapters."

By strengthening North Carolina Delta's financial resources, Kelley appreciates that she will help the women in the chapter navigate the challenges of an uncertain, rapidly changing world so they will emerge as strong leaders. "Lifelong Commitment means staying open to new possibilities and new ways to make an impact," she says. "When I'm asked to give my support — financial, volunteer or leadership — I look at everything Pi Phi has given me. Whether I've been connected with a career, found friendship in a new city, developed a relationship with a mentor or had a vehicle to accomplish amazing things, Pi Phi brought me to each of those opportunities. So I ask my sisters: What has Pi Phi added to your life? What opportunities has it given you, and how will you help ensure those opportunities for the next generation of women?" ◀

LOBBYING FOR OUR FUTURE

If there's one place that exemplifies the VUCA world, it's Washington, D.C. — in particular, Capitol Hill. Every four years there's a U.S. presidential election that often brings a new administration, and every two years, the entire House of Representatives and one third of the Senate are up for re-election. An election brings changes in staff, leadership personalities, political parties,

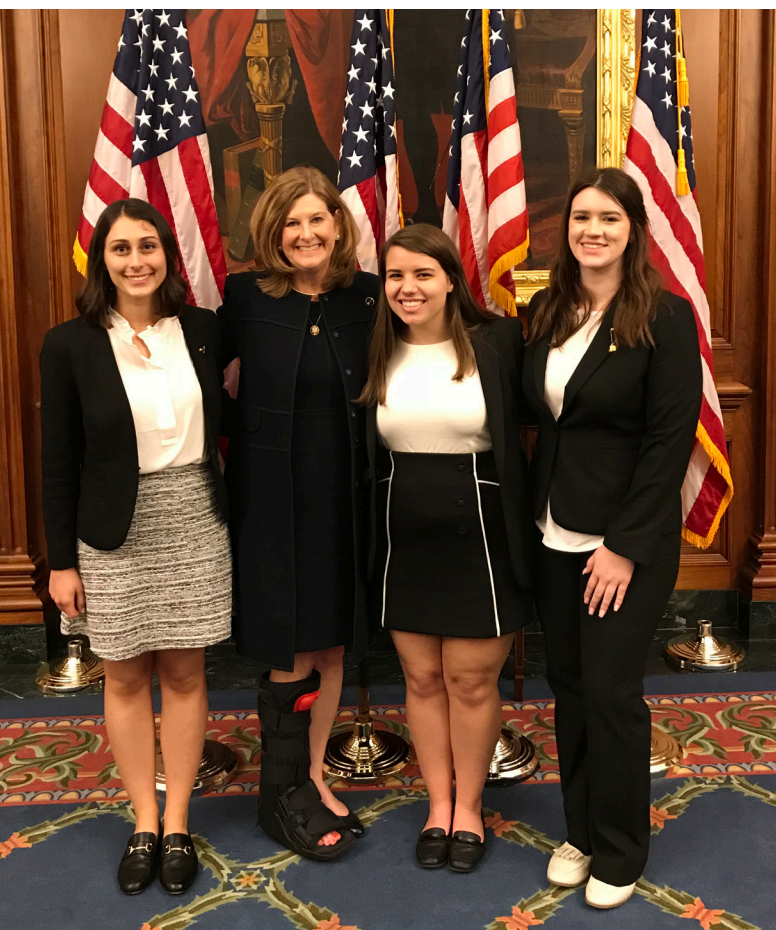
agendas and legislative priorities. A volatile, uncertain atmosphere is the rule rather than the exception. Since 2013, Illinois Theta **SHEILA CONSAUL** has been a member of the Fraternal Government Relations Coalition (FGRC), representing Pi Beta Phi, and has navigated the VUCA waters of Capitol Hill while lobbying for the fraternity and sorority experience.

"VUCA is pretty much standard operating procedure on Capitol Hill," said Sheila. As a past Hill staffer and a former professional lobbyist, she has experience on both sides of the legislative process and has learned to adapt to the environment. "I've spent my entire professional life living and working in Washington and have navigated many years of VUCA. Being flexible and open-minded has helped me, and I depend upon my Pi Phi sisters in the area to keep me grounded by discussing the changes as they happen and the specific impact they have on us as professionals, moms, volunteers and community leaders."

Sheila's Pi Phi volunteer work with the FGRC allows her to communicate issues and concerns important to fraternity and sorority organizations to members of Congress. FGRC works to establish relationships in Washington and has been instrumental in building awareness around issues impacting fraternities and sororities, including:

- Preserving freedom of association;
- Upholding Title IX rights to protect from discrimination based on sex and maintaining single-sex status;
- Ensuring charitable deductibility; and
- Supporting essentials of student success and safety.

Sheila's passion for making a difference and leading the way on Capitol Hill is clear. Every April, she works directly with selected Pi Phi collegians and alumnae who participate in a fraternity and sorority lobbying day organized by the FGRC. In total, more than 200 sorority and fraternity members of all ages descend upon Capitol Hill and visit congressional members' offices to talk about issues important to their organizations. "I love to educate Pi Phis on how the Hill works and how we can influence specific pieces of legislation," says Sheila. "I particularly



Above, from left, California Beta **JULIA LEWIS**, Texas Alpha **MARTHA MCKENZIE HILL**, North Carolina Alpha **KATHARINE SHRIVER** and Illinois Iota **BRIGITTE DIETZ** were part of the Pi Beta Phi lobbying team in 2018.

HOW IS PI BETA PHI NAVIGATING VUCA?

Pi Beta Phi's ability to thrive for more than 150 years is the result of purposeful reflection, passionate action and intentional stewardship. We all share the responsibility of caring for the sisterhood we inherited, but we look to our leaders to set vision and direction. Our strategic plan outlines that vision and direction, setting a clear path for the work ahead. As a values-driven organization, we know how we do the work will best defend us against volatility, uncertainty, complexity and ambiguity. Pi Phi has approached the work of our last biennium with a focus on friendship, a commitment to relevancy and a desire for simplification. If we're attentive to these operating principles, we're sure to chart a path forward as straight as an arrow.

Focusing on friendship reconnects us with the reason Pi Phi was founded. We've prioritized investment of resources to ensure our chapter facilities support collegians living, learning and growing together. We've redesigned alumnae club programming to promote fun and friendship rather than cumbersome expectations. Pi Phis have shown the value of their friendships, their belief in the member experience and their loyalty to our sisterhood by their commitments to our **SHINE THROUGH** campaign.

A **commitment to relevancy** has pushed us to make decisions honoring our past while focusing on our future. Through Pi Beta Phi Leadership Institute, we're building confident women leaders who will make the impossible the inevitable. With the launch of programs like the Literacy Advocacy Project, we're giving our members more opportunities to make an impact in their communities. Relevancy also means looking within for ways to change, grow and improve. Our proposed officer structure seeks to better support and empower Pi Phi leaders, encouraging them to practice skills needed to succeed in today's world.

With a **desire for simplification**, Pi Phi continues to streamline the expectations we place on our members. Both the Alumnae Club Review and Chapter Evaluation have been condensed to focus on clear organizational priorities. We've even changed the way we communicate with our sisters, refocusing our efforts to achieve a more unified Pi Beta Phi voice and brand. ◀



Above: A group of Pi Phis gather on Capitol Hill during Lobbying Day 2018. From left, Illinois Iota **BRIGITTE DIETZ**, Texas Beta **ANA MANCEBO MILLER**, California Beta **JULIA LEWIS**, Louisiana Beta **MARY SATTERLEE ANDREEFF**, North Carolina Alpha **KATHARINE SHRIVER**, Texas Alpha **MARTHA MCKENZIE HILL**, Illinois Theta **SHEILA CONSAUL** and D.C. Alpha **KATRINA VALDES BISHOP**.

enjoy working with the collegians as they train for the lobbying experience. Hearing their passion when they share their personal stories makes an incredible impact and helps us accomplish our legislative goals.”

Even though she knows the environment of Capitol Hill isn't likely to change, Sheila continues to lobby for specific pieces of legislation to support the fraternity and sorority experience. Her work is important and helps our government officials understand how Pi Phi (and other sorority and fraternity organizations) contributes to the betterment of society, and prepares its members to thrive despite a VUCA environment. ◀

Proposed Organizational Structure Positions Pi Phi for the Future

Convention 2019 delegates will consider important legislation that aims to help Pi Beta Phi successfully navigate the volatile, uncertain, complex and ambiguous (VUCA) environment: a new officer structure for the Fraternity. For more than a year, a tactical team comprised of Pi Phi volunteers and Headquarters staff has worked to create the proposed organizational structure. The proposed structure has been developed with the goal of better positioning Pi Phi for current and long-term needs, and takes into account feedback gathered through discussions with peer fraternities/sororities and interviews, surveys and focus groups of Pi Phi collegians and alumnae.

With a goal of each member having a seamless, positive member experience throughout her life — the proposed structure blends the separate collegiate and alumnae regional model from our past into a unified model for our future. Title changes will begin at the Chapter Executive level and extend throughout the organization. Roles have been redefined to simplify and clarify duties, as well as reflect the needs of the organization and our members in today’s landscape.

“The structure changes being proposed allow for more relevant leadership opportunities in our collegiate chapters,” said Grand Vice President Collegians **ALISON VEIT HEAFITZ**, Illinois Zeta. “As part of the Chapter Leadership Team, these members will receive training and experience that will develop their leadership skills, preparing them to be leaders for life.”

With the creation of the Alumnae Engagement Director positions and the Director Alumnae position, the proposed structure will encourage increased engagement for all alumnae, whether they live in a club area or not. Tactical support for alumnae clubs will be provided through the creation of Alumnae Club Support Officer roles. These will be appointed roles (not shown on the proposed organizational chart), filled on an as-needed basis and will not be standard for all clubs — providing support to the right club at the right time, regardless of geographic region.

“We want all Pi Phis to experience Sincere Friendship as part of their lifelong commitment to Pi Beta Phi,” said Grand Vice President Alumnae **AMY LORENZEN SOUTHERLAND**, South Dakota Alpha. “We believe the proposed structure will promote alumnae engagement, enhance collaboration between collegians and alumnae and help transition our collegians into life as Pi Phi alumnae following graduation.”

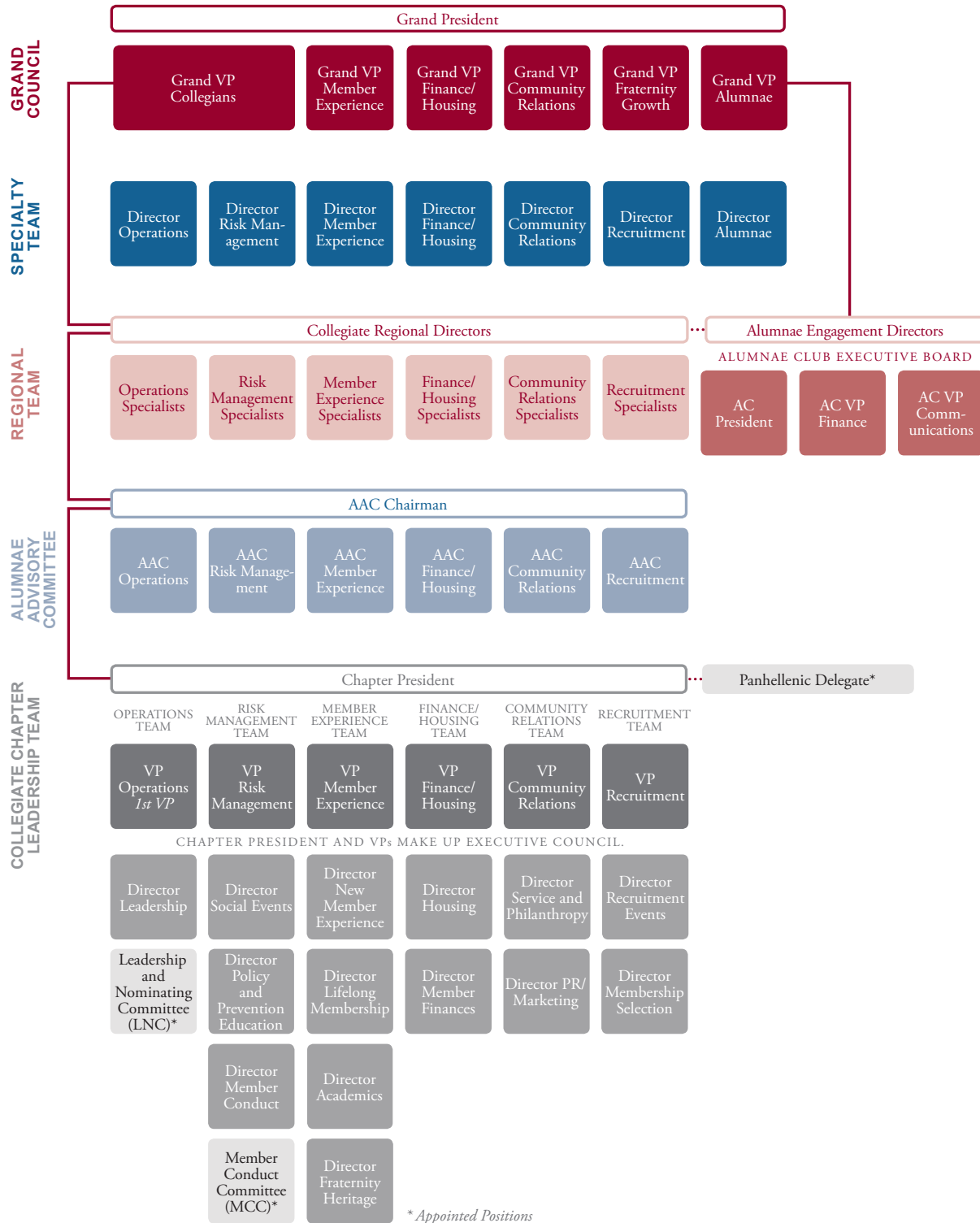
To view frequently asked questions, additional benefits of the proposed structure, job descriptions and more, visit www.pibetaphi.org/proposedstructure. ←



More than a year of research and discussions went into a proposal to revise the Pi Beta Phi officer organizational structure. Delegates will consider whether the Fraternity will move forward with the plan at Convention 2019.

Proposed Pi Beta Phi Officer Organizational Chart

Upon legislative approval, international officer structure would be effective immediately and collegiate officer structure would go into effect at each chapter's next election cycle.



ΠΒΦ

MONUMENTAL *Sisterhood*

72ND BIENNIAL CONVENTION

JUNE 28 - JULY 2, 2019 | WASHINGTON, D.C.

YOU CAN BE WITH US, EVEN IF YOU'RE NOT WITH US!

If you're not planning to attend Convention 2019, there are ways for you to participate virtually in this monumental celebration of sisterhood, heritage and Pi Phi pride!

1. JOIN US FOR FACEBOOK LIVE EVENTS

Several Facebook Live events will be available, so you can be part of convention right where you are! Check out www.pibetaphi.org/convention and click the "Join us Virtually" link under the "Agenda" tab for dates and times of the Facebook Live events.

Follow #MonumentalSisterhood on Facebook, Instagram and Twitter for pictures, memories and more.

2. HONOR A SISTER AT HALO HEAVEN

For just \$5 each, you can send halos to thank, recognize, remember or simply say hello to a sister. Halo Heaven (www.haloheaven.org) will be open June 1 through July 1 to help you honor all the angels in your life while supporting the future of our sisterhood!

3. SHARE YOUR SISTERHOOD STORY

Send us your favorite Pi Phi stories about sisterhood, and they may be shared throughout convention. Your sisterhood story may relate to any Pi Phi occasion, or it may be a story about how a sister was there for you when you needed a friend. Please email your sisterhood story to sisterhoodstories@pibetaphi.org by June 1.

4. SHINE THROUGH FOR PI BETA PHI

There's still time for you to participate in Pi Phi's monumental **SHINE THROUGH** campaign that ends at the conclusion of Convention 2019. To shine your light and make your campaign gift, please visit www.pibetaphifoundation.org/givenow.

5. GET THE SCOOP IN *THE DAILY DART*

Stay in the loop on convention happenings by reading *The Daily Dart* — the convention newsletter published Friday through Tuesday of convention. Issues will be posted on the Pi Phi website at www.pibetaphi.org/convention. ←



SHINE THROUGH

UNENDING LOYALTY. ENDLESS IMPACT.

There's Still Time to SHINE THROUGH for Pi Phi

The **SHINE THROUGH** campaign is set to conclude at Convention 2019 with a monumental celebration! We're excited to share the success of this historic \$28 million campaign to sustain our sisterhood. Only a few months remain to be part of Pi Phi's largest-ever philanthropic endeavor. **Now** is the time to show your unending loyalty and create endless impact for Pi Beta Phi.

We're inspired by the strong support our sisterhood has shown for our campaign aspirations: leadership, scholarships, literacy, housing and operational resources. The campaign offers a place for every Pi Phi passion, and we celebrate gifts supporting any aspiration to help reach or surpass our goals. In the final months of the campaign, we're focused on building the operational resources Pi Phi needs now.



OPERATIONAL RESOURCES

Your gifts ensure Pi Beta Phi has the resources to leverage growth and sustainability.



LEADERSHIP

Your gifts prepare members to lead in collaborative and innovative ways.

WILL YOU JOIN US AND SHINE THROUGH?

Learn more about the campaign at pibetaphifoundation.org/campaign.
Speak with a member of the Foundation team by calling (636) 256-1357.
We'd love to schedule a visit!

Make your gift today at pibetaphifoundation.org/givenow.

TEXT **SHINE** TO **51-555** TO RECEIVE CAMPAIGN TEXT UPDATES.

Navigating VUCA Takes Teamwork

Since the earliest days of our philanthropic work in Gatlinburg, Tennessee, members across Pi Beta Phi have dedicated themselves to the cause of literacy service. We often refer to the “Fraternity of volunteers” who respond to our call to participate, donate and advocate for literacy — and bring our Read > Lead > Achieve® efforts to life. Whether members are working with school-age children through the Champions are Readers® program, hosting a book fair in honor of Fraternity Day of Service or coordinating a fundraiser to benefit The Literacy Fund at Pi Beta Phi Foundation, the success of Pi Phi’s literacy initiatives relies on a far-reaching network of committed volunteers.

Because our work positively impacts children and communities across North America, our programs and events are championed by local volunteers who share our deeply-rooted passion for literacy service and bettering the lives of others. To execute community-wide efforts such as our Fraternity Day of Service Signature Events — where, in one day, volunteers in each host city distribute 20,000 new books to children in need — co-chairs must engage broad support inside and outside Pi Phi.

The co-chairs of this year’s Indianapolis Signature Event — **JILL MACKEY CARREL**, Indiana Gamma, and **GRETCHEN STAHL FORAN**, Indiana Theta — knew the need that existed within their community and felt a personal call to make a difference. “Both my children go to magnet

Below: Members of Sigma Tau Gamma Fraternity's three national boards and staff leadership team partnered with Pi Beta Phi volunteers at the Fraternity Day of Service Signature Event in Indianapolis.





Above, from left: **JILL MACKEY CARREL**, Indiana Gamma, and **GRETCHEN STAHL FORAN**, Indiana Theta, served as co-chairs of the Fraternity Day of Service Signature Event in Indianapolis. Both women work for men's fraternities headquartered in the Indianapolis area.

schools within the Indianapolis Public School district, and their schools are socioeconomically diverse," Jill says. "Getting to know my children's classmates over the years, I've realized some don't come from the best of circumstances. I knew Pi Phi could make an impact by putting books in the hands of these children and by helping teachers struggling with limited resources."

Jill and Gretchen also knew they had an advantage when it came to recruiting volunteers for the Signature Event: the fraternity and sorority community, many of which have headquarters or national offices in Indianapolis. Both co-chairs work for Greek organizations; Jill is Director of Foundation Fraternity Operations for Sigma Tau Gamma Fraternity, and Gretchen is Director for Member Education for Delta Tau Delta Fraternity. "As we promoted the event through our personal and professional networks, our friends who represent various fraternities and sororities signed up to volunteer together," Jill says. "It's a true testament to the commitment our organizations have made to give back, and it's awesome that we were able to give our friends and coworkers this opportunity to contribute to the Indianapolis community in such a special way."



Above: Volunteers from Sigma Tau Gamma helped to distribute books to organizations serving children in need at the Fraternity Day of Service Signature Event in Indianapolis.

In particular, Sigma Tau Gamma's leadership joined Pi Phi volunteers in making a substantial impact on literacy in Indianapolis. The members of the fraternity's three national boards recently made a commitment to incorporate service into their meetings. The boards met in Indianapolis February 28 through March 3, and Jill knew she could make an important connection between her professional and personal worlds. At the Indianapolis Signature Event, all Sigma Tau Gamma board members and staff leadership team members served two-hour shifts distributing books to children in need.

"I love that through this celebration of Pi Phi's literacy service, we created an opportunity for other leaders in the fraternity and sorority community to fulfill their principles and values," Jill said. "It was amazing to see that intersection happen at Fraternity Day of Service." ←

Making a difference, one child, one moment at a time.

One book makes a big difference. Can you even start to imagine the difference made with the 130,000 books donated through Pi Beta Phi's 2019 Signature Fraternity Day of Service Events, FDS500 book grants and alumnae club and chapter literacy celebrations? Enjoy our favorite pictures of the hundreds of Pi Phis and friends in action March 1-2 distributing books in Indianapolis, Omaha, Phoenix and Tucson. Good work, sisters! ◀





In Memoriam

We honor our Pi Phi sisters who have passed away and celebrate their part in our sisterhood.

In Memoriam lists the name and initiation year of each member who has died. The list below reflects notification by public obituary received at Pi Beta Phi Headquarters between November 1, 2018 and January 31, 2019.

Obituaries may be sent by email to Engagement Coordinator **CAROLYN BANKS LOPER**, Illinois Eta, at cloper@pibetaphi.org or by mailed Headquarters.

Memorial gifts made to Pi Beta Phi Foundation are a loving and lasting way to honor the memory of a beloved Pi Phi sister. To make a memorial gift, please call our Foundation at (636) 256-1357 or visit www.pibetaphifoundation.org.

ALABAMA BETA

Jean Fargason Gordon, 1965
Beverley Latimer King, 1949

ALBERTA ALPHA

Norah Day Wilton, 1950

ARKANSAS ALPHA

Joy Kirkpatrick Sly, 1946

CALIFORNIA BETA

Barbara Hand Blakeslee, 1952

CALIFORNIA DELTA

Natalie Puente, 2016

CALIFORNIA EPSILON

Johanna Billings Seignious, 1953

CALIFORNIA ZETA

Roni Cotton White, 1961

COLORADO ALPHA

Nancy Dickinson McComb, 1955

COLORADO BETA

Pamela Hatfield Gemmer, 1963

COLORADO GAMMA

Joanne Brafford Silkensen, 1955,
affiliated Colorado Alpha

CONNECTICUT ALPHA

Marie Clark Combs, 1949
Adelle Wadhams Wright, 1947

FLORIDA BETA

Martha Perkins Jones, 1945,
affiliated Florida Alpha

FLORIDA DELTA

Nina Karlinsky, 2016

GEORGIA ALPHA

Carolyn Harris Costa, 1942
Betty George Perry, 1951

IDAHO ALPHA

Jean Cummings Rudolph, 1939

ILLINOIS BETA-DELTA

Helen Verner, 1957

ILLINOIS EPSILON

Helen Winter Clobridge, 1940
Gail Ann Miyoko Honda, 1976

ILLINOIS ETA

Martha Robinson Grohne, 1951

ILLINOIS THETA

Jean Newcomer Jorgensen, 1976
Mari Pfeffinger McGinnis, 1957

ILLINOIS ZETA

Charlotte Jones Falkenstein, 1953

INDIANA ALPHA

Michelle Renee Hoover, 1993

INDIANA BETA

Jean Bielby Bash, 1936
Betty Higbee Cruickshank, 1937
Jo A. Thomas Eckelman, 1953

INDIANA DELTA

Georgene Schmal Cronin, 1953
Dayna Less, 2012
Lucy Broeking Reed, 1945
Margie Leonard Rider, 1942
Dorothy Hirschman Smeck, 1941

INDIANA GAMMA

Nancy Hastings Engledow, 1950
Phyllis Carter Stucker, 1943
Valera Hume Wolf, 1950

INDIANA ZETA

Judy Merrill Thornburg, 1963

IOWA ALPHA

Ruth Edwards Bentzinger, 1951
Patricia Barrett Martin, 1947
Joyce Keefer Murdock, 1946

IOWA GAMMA

Martha LeBuhn Allen, 1949
Dolores Carlson Owen, 1938

IOWA ZETA

Barbara Parker Durey, 1953

KANSAS ALPHA

Frances Grimes Alt, 1953

KANSAS BETA

Barbara King Hageman, 1946
Patty Templer Hart, 1962
Carol Noble Massieon, 1965
Cecile Cary Morse, 1948

LOUISIANA ALPHA

Ruth Knighton Atkins, 1955
Ann Hutchinson Green, 1950,
affiliated Texas Beta
Virginia Day Huff, 1948
Mary Norman Longenecker, 1954
Ann S. Wisdom Stolley, 1961

LOUISIANA BETA

Annie Hollingsworth Evans Haile, 1949
Cammie Lapenas, 1968

MAINE ALPHA

Lee Blumenstock Leroy, 1979

MANITOBA ALPHA

Bertha Andreassen Eggertson, 1949
Sharon Campbell Naimish, 1950

MASSACHUSETTS ALPHA

Rachel Pease Howard, 1947

MICHIGAN ALPHA

Martha Baynham Beaber, 1957
Judith Webber Conlon, 1954
Jane Henderson Haynes, 1959
Ann Davis Hentz, 1948
Kyle Chambers Maystead, 1975

MICHIGAN BETA

Barbara Heath Killins, 1936

MICHIGAN GAMMA

Judith Haack Ryan, 1959

MINNESOTA ALPHA

Nancy Hyde Stehr, 1957

MISSISSIPPI ALPHA

Mary "Lonnye" Hunt Norman, 1961

MISSISSIPPI BETA

Hazel Branch Latture, 1977

MISSOURI GAMMA

Nancy Anderson Papanek, 1950

MONTANA ALPHA

Joan Welch Young, 1957

NEBRASKA BETA

Janice Blakeslee Lindberg, 1944
Dorris Eberly Stead, 1944

NEBRASKA GAMMA

Joy Hancock Moeller, 1994

NEVADA ALPHA

Nancy Nurre Callaghan, 1970
Susan Scudder Francis, 1958

NEW JERSEY ALPHA

Alexandra Coulter Manfull, 2009

NEW YORK DELTA

Jacqueline Horn Knapp, 1952

NEW YORK GAMMA

Peggy LaRock Blanchard, 1960

NORTH CAROLINA ALPHA

Mary McCaskill Mehaffey, 1942
Anne Johnson Skelley, 1945

NORTH CAROLINA BETA

Margaret Taylor Smith, 1944
Mimi Leffler Warren, 1949

OHIO ALPHA

Patty Locke Zellers, 1949

OHIO BETA

Katherine Montgomery MacEwan, 1950

OHIO DELTA

Peggy Shaffer Schwoegler, 1941

OHIO ETA

Susan Colwell Link, 1958,
affiliated Illinois Zeta
Sue Siebenthaler Scott, 1956

OHIO ZETA

Nancy Reese Ware, 1948

OKLAHOMA ALPHA

Lyn Pebbles Fene, 1953
Betty Bailey Hall, 1940
Jenise Hyde Hurlley, 1968
Anna Clabaugh Walker, 1956

OKLAHOMA BETA

Jane Coffee Armstrong, 1944
Barbara Crutchfield Higgins, 1950
Marilyn Middleton, 1956
Mary Jane Gerhards Sloan, 1957
Sandra Sparks Wilson, 1953

ONTARIO BETA

Marion Webster Morgan, 1940

OREGON ALPHA

Marilynn Reaney Adams, 1958
Wallis Brissenden Nosler, 1957
Susie Kinser Verdurmen, 1956

OREGON BETA

Vivian van Hoevenberg Allen, 1936
Pamela Clayton Toelle, 1957

PENNSYLVANIA BETA

Marion McConnell McCormick, 1939

PENNSYLVANIA EPSILON

Carol Resch Hillegas, 1969

PENNSYLVANIA GAMMA

Ethel Peterson Feinour, 1947
Margery Porch Hollinshead, 1965

SOUTH DAKOTA ALPHA

Lois Harvey Gatchell, 1939,
affiliated Arizona Alpha
Shirley Johnson Hess, 1948

TENNESSEE ALPHA

Katie Brown, 1970

TENNESSEE GAMMA

Barbara Huff Beville, 1949
Sharon McCullough Tucker, 1970

TEXAS ALPHA

Joanne Harrell Arnold, 1954
Sally Witt Duncan, 1945
Glenda Hairston Ledford, 1957
The Rev. Elizabeth Masquelette, 1946
Kate Elledge Turley, 1956

TEXAS BETA

Molly Porter Burke, 1962
Doris Padgitt Crockett, 1937
Joan Whitten Lynch, 1950
Marilyn Souder Perry, 1946

TEXAS ETA

Courtney Cristine Cook, 2004

VIRGINIA ALPHA

Polly Ishmael Sandlin, 1957,
affiliated Oklahoma Alpha
Myra Parkes Winder, 1950

WASHINGTON ALPHA

Barbara Crawford Loveless, 1947
Ann Humes Sankey, 1948

WISCONSIN ALPHA

Dorothy Higson Gates, 1943
Sharon Bell Klanderan, 1955

pi phi express



OLD SCHOOL T-SHIRT
\$18



CROSSED ARROWS TANK
\$24



BLOCKED RINGER T-SHIRT
\$25

**ARROW
FESTOON
NECKLACE**
10k gold \$125
Sterling silver \$30



**GREEK LETTER
FESTOON
NECKLACE**
10k gold \$150
Sterling silver \$50



BRIDAL PIN
Gold-plated
\$40

PETITE BAR BRACELET \$45
Sterling silver
or gold-plated.



**RAISED PEARL
AND DIAMOND
BADGE \$300**



**CROWN PEARL
BADGE WITH
GARNET \$300**



**DIAMOND
POINT BADGE
\$225**



**GARNET AND
PEARL BADGE
\$275**



**GARNET AND
AQUAMARINE
BADGE WITH
DIAMOND
POINT \$325**



**LETTER
GUARD \$65**

RECOGNITION JEWELRY

*Silver Arrow Society jewelry recognizes 25-year members.
Order of the Golden Arrow jewelry recognizes 50-year members.
Diamond Anniversary jewelry recognizes 75-year members.*



**DIAMOND
ANNIVERSARY
PENDANT**
Gold gloss, cubic
zirconia \$35
Also available
in a pin.

**ORDER OF
THE GOLDEN
ARROW PIN**
10k gold \$200
Gold gloss \$30
Also available
in a pendant.



SILVER ARROW SOCIETY PIN
Silver-plated \$25

HERFF **H** JONES.

*All jewelry is sterling silver or 10k gold
unless otherwise noted.
Jewelry may be enlarged to show details.*



Friends & Leaders for Life

Pi Beta Phi Fraternity
1154 Town & Country Commons Drive
Town & Country, MO 63017
www.pibetaphi.org

NONPROFIT
ORGANIZATION
US POSTAGE
PAID
PERMIT NO 1828
ST. LOUIS, MO

SHINE THROUGH

UNENDING LOYALTY. ENDLESS IMPACT.

Will you **SHINE THROUGH** for Pi Beta Phi?

We're excited to share the success of the \$28 million **SHINE THROUGH** campaign to sustain our sisterhood! Only a few months remain to be part of Pi Phi's largest-ever philanthropic endeavor. Now is the time to show your unending loyalty and create endless impact for Pi Beta Phi.

Please turn to page 41 to learn more!

