

The Arrow OF PI BETA PHI

WINTER 1983



Colorado Alpha's Pi Phi Van



Dear Editor ...

Editor's Note: *This is your page—made available to anyone wishing to comment on articles, the magazine, or any topic of interest to our readers. Letters must be signed with full name, address, and chapter. We reserve the right to edit as needed to space requirements and content.* msf

A Family Affair

I am writing to you now as I do enjoy our ARROW. Not only that but I appreciate an aspect of it that you might possibly not know about: it helps unite families!

This is, in fact, an "old" piece of news, but it has been brought up-to-date, so to speak, which is why I am writing you now.

In 1958 (!) I attended a Mortar Board Convention as the representative of Middlebury College, Vt. While there, we Pi Phis got together for a picture which appeared in *The ARROW* and, lo and behold, several months later I received a note from a lovely lady asking me if I happened to be the daughter of the flower girl at her wedding (who was a very young cousin). I was and we started to correspond, always hoping to meet one day. But years bring different adventures: I studied and married in Europe, lived 11 years in Japan, and returned again to France. Marion Evans and I have been tenacious however, writing at Christmas each year and every letter has been special.

It was this past March when I had the opportunity to visit my eldest son in Texas that Marion and I had the chance to talk (twice!) over the phone. And what did we talk about? Pi Phi, of course, and how it brought us together in spite of many odds.

We now hope and plan to meet in 1984 if I am able to return for my 25th reunion at college. And meeting this Pi Phi sister will surely be the highlight of my trip. Marion is now in her late eighties and last year she fell and was quite injured, although she has recovered very well.

Could you possibly run a little THANK YOU from me to her for that letter 25 years ago? Thank you very much for this—and for your (our!) ARROW.

Nancy Smoller LeFloch
Vermont Alpha
Chatel Guyon, France

➔ Central Office doesn't have a listing for Mrs. Evans, but we will send her a copy of this issue with the above charming letter.

Interest in Clothes

Your selection of articles, news of Pi Phis, both alums and actives, around the United States is excellent. The magazine has brought back memories for me from college days, plus made me aware of where Pi Phis are in sports, academics, service to local communities, and campus awards today. Thank you for your work and dedication to the Pi Phi ARROW.

My request is for all pictures to show how clothes add to the beauty of Pi Phis rather than detract from them. I appreciated reading one mother's letter to you saying her daughter gets the current popular hairstyle for her own hair from reading *The ARROW*. I too have a daughter and would want her to find hairstyles, clothes, and interests or activities she could copy and grow into the woman God wants her to become.

Thank you again for an excellent coverage of Pi Phi happenings.

Janice Duke Pindell
Oregon Beta (Oregon State)
Idleld Park, Oregon

➔ We wish we had room to show more full-length pictures, but lack of

space means photos often must be cropped to the limit. And sometimes it would be better NOT to see what is being worn!

Is Policy Outdated?

I believe that our policy of wearing the Pi Phi badge only as a badge is outdated and should be reevaluated.

After leaving college, the pin gets put in the jewelry box and only worn in the presence of other Pi Phis at an alumnae meeting—if you remember to wear it then.

This seems such a waste to me. The badge represents ideals, standards, and accomplishments that we are all proud of. In addition, it is a lovely piece of jewelry. Wouldn't it be much better to allow alumnae to mount the badge to wear as a necklace, brooch, or bracelet for all the world to see?

Being a Pi Phi is a bond to be proud of. Let's come out of the closet and identify ourselves as alumnae too.

Ruth Austin Lane
Florida Alpha (Stetson)
Orlando, Fla.

Article Will Help

Last year, or so, there was an article concerning the "heartbreak" of a Pi Phi whose daughters chose to pledge other sororities. I wonder if there is any way I could get a copy of this article. My niece just pledged Pi Phi and is thrilled to death! Her mother is a Kappa and was crushed at Julie's decision—even though she knows and really wanted her to choose the sorority she wanted. I mentioned this article to her and think it would help her get over her disappointment.

Geraldine Herbst Winegardner
Colorado Beta
Sacramento, Calif.

➔ We sent Geri a copy of the article by Kate Gilbert Phifer "To My Pi Phi Sisters, With Love . . ." with the hope that the pain will be eased.

Opportunity Knocks

Enclosed is an update of my current address. Kindly forward all Pi Phi alumnae information and ARROW magazines directly to me at the address listed.

Just for your information, as well as for other Pi Phis who may find it interesting . . . I am currently working with ICM Artists, Ltd., in the classical music division. We handle such artists as Isaac Stern, Itzhak Perlman, Mikhail Baryshnikov, and the Vienna Choir Boys, and look after their touring schedules in the United States and Europe. Soon I will be moving on to the commercial entertainment division at ICM. My new responsibilities will include casting for major national network commercials and the main clients I will work with are Stiller and Mera, Dinah Shore, Tony Randall, and Sir Lawrence Olivier.

Any Pi Phis who may be interested in the commercial entertainment business, or who are actresses themselves, should feel free to contact me at my home address.

Suzin Grosse
Ohio Alpha (Ohio University)
New York, N.Y.

➔ Suzin's address is on file in Central Office.

FRONT COVER—The Pi Phi Van, owned by Colorado Alpha Valie Lowrie, is wine with silver blue arrows running the length of either side. The plush interior is silver blue, and the finishing touch—license plates that say Pi Phi. The University of Colorado Pi Phis pictured are (l-r): Peggy Frasca, Lauren Clary, Lynn Foster, Julie Scharff, Monique Ducote, Valie, Lisa Yates, Nancy Ullemeyer, Cammy Duckett, Lisa Gamel, and Nancy VonLaven.

THE **Arrow** OF PI BETA PHI

VOLUME 100

WINTER, 1983

NUMBER 2

OFFICIAL ORGAN OF THE

Founded



PI BETA PHI FRATERNITY

1867

FOUNDERS OF THE FRATERNITY

Emma Brownlee Kilgore (1848-1924)
Margaret Campbell (1846-1936)
Libbie Brook Gaddis (1850-1933)
Ada Bruen Grier (1848-1924)
Clara Brownlee Hutchinson (1850-1931)
Fannie Whitenack Libbey (1848-1941)

Rosa Moore (1848-1924)
Jennie Nicol, M. D. (1845-1881)
Inez Smith Soule (1846-1941)
Fannie Thomson (1848-1868)
Jennie Horne Turnbull (1846-1932)
Nancy Black Wallace (1846-1918)

Office of Publication:
7730 Carondelet, Suite 333,
St. Louis, Mo. 63105



Staff

ARROW Editor

Marilyn Simpson Ford (Mrs. William W., Jr.), 268 Underwood Dr., N.W., Atlanta, Ga. 30328

Alumnae Club Forum Editor

Carol Busch Marlowe (Mrs. Britton L.), 2860 Mirage Drive, Colorado Springs, Colo. 80918

From Pi Phi Pens (Book Reviews)

Clare Harding Sanford (Mrs. Frank W.), Little Professor Book Center, Hilltown Village Center, Chesterfield, Mo. 63017

Arrow File and In Memoriam

Pi Beta Phi Central Office, 7730 Carondelet, Suite 333, St. Louis, Mo. 63105

Features

Dear Editor.....	Inside front cover
Off the ARROW Hook.....	4
News of Arrowcraft & Arrowmont.....	14
Short Stories of Sagacious Sisters.....	19
Pi Phis Abroad.....	26
Kyle Angel Award Province Winners.....	32
Doing Unto Others Through Chapter Service Projects..	34
Province ABO Winners.....	38
Province Chapter Service Winners.....	39
Pi Phi Pacemakers—Mortar Board.....	42
Athletic Angels.....	44
In Memoriam.....	55
Fraternity Directory.....	56
Official Calendars.....	57
Campus Sights & Sounds.....	Inside back cover

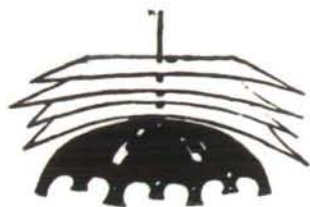
¶THE ARROW (USPS 032-540) is printed Fall, Winter, Spring and Summer by Pi Beta Phi Fraternity at the press of George Banta Company, Curtis Reed Plaza, Menasha, Wis.

¶Send change of address notice and correspondence of a business nature to Pi Beta Phi Central Office, 7730 Carondelet, Suite 333, St. Louis, Mo. 63105.

¶Correspondence of an editorial nature is to be addressed to the editor, Mrs. W. W. Ford, Jr., 268 Underwood Dr., NW, Atlanta, Ga. 30328.

¶Second class postage paid at St. Louis, Missouri, and at additional mailing office.

Printed in the United States of America



off the *Arrow hook*

WELCOME IOWA ETA at Drake University in Des Moines. By the time this is read, Pi Phi will have added, officially, another chapter to the roll. The big weekend was October 7-9, and we'll tell you all about it in the spring ARROW. In the meantime, WELCOME IOWA ETA!

Our face is red! We are embarrassed! We have pulled a true boner! One of the thrills of Convention '83 came when Atlantan Teri Morris Wheatley won the award for the best song in the alumnae category, and our own Atlanta Alumnae Club president, DOREEN Mueller, accepted the award for Teri. We have known DOREEN since she was an active Georgia Alpha at the University of Georgia, and she has been a member of our local club since her graduation. Why we identified her as Darleen Mueller in the Convention picture, as she accepted the award, we'll never know. We could insist it was just a typo, but we know we wrote the caption and also read proof on it, so that excuse won't hold water. So we are the laughing stock of our alumnae club, wear sack cloth and ashes, and extend our humble apologies to our good friend DOREEN!

Another name needs to be added to the list of Pi Phi presidents of Alumnae Panhellenics. Doris Brown Fawcett, former Grand Secretary, is the 1983-84 Alumnae Panhellenic President in Clearwater, Florida.

In this page in the spring 1983 issue, we congratulated Nancy Knorr Polk, Michigan Alpha, for being elected mayor pro tem of Bloomfield Hills, Mich. Now we congratulate her again, since she has become the first woman mayor of that city. She was the first woman elected to the city commission, served as mayor pro tem last year, and as is tradition in that city, moved up to the top office in April.

A letter from Carol White Poore, Arizona Beta, updates her listing in Central Office and passes on this bit of news. For the past four years, since graduating from Arizona State, she's been a journalist and advertising manager for the Lake Powell *Chronicle* in Page, Arizona. She also notes that she was selected as an Outstanding Young Woman of America for 1982.

"I was informed of this last March, and hope I didn't wait too long before telling you," she writes. We say it's never too late to find out about good things happening to Pi Phis!

Vanderbilt Today, the alumni publication of Vanderbilt University, congratulates Maryly VanLeer Peck, Tennessee Beta, the first woman to be named president of a community college in Florida. Last September she became

president of Polk Community College in Winter Haven. Formerly, she was dean of undergraduate studies at the University of Maryland and had served as president of Cochise College in Arizona. Maryly's father was president of Georgia Tech at one time so she is a former Atlantan. We add our Pi Phi and personal best wishes for success in her new position.

Still more interesting information about involved Pi Phis comes from Pat Campbell Dyess in Phoenix. The Women's Golf Association of Arizona Country Club in Phoenix involves several Pi Phi alums as leaders. This year the president's gavel passes from Jan Weiser Toth, Illinois Zeta (U.I.), to Janna Oppegaard Borg, Minnesota Alpha (Univ. Minn.).

Pat Dyess, Arkansas Alpha (Univ. Ark.) is treasurer for the second year and Joan Reyburn Buchanan, Illinois Theta (Bradley), has served as team captain.

Other board members have been Kay Carter Bush, California Gamma (USC), and Jeanne Lusby Garland, Arizona Alpha (Univ. Ariz.).

The Arizona Country Club Women's Golf Team has been Inter-Club Champion for the last four years.

Is it any wonder, with such outstanding leadership?

We were delighted to receive the following note from Lynn Mitchell at Ohio Wesleyan. "ΠΒΦ or HBO? To a five-year-old, they are one and the same. When passing by the Ohio Delta house, a youngster was excited to have found the Home Box Office television headquarters when he saw our Greek letters."

Of interest to Pi Phis everywhere are some tidbits of information from Grand President Jean Scott's letter to Fraternity officers. The total number of Pi Beta Phi initiates to date (August, 1983) is 136,776. 87 percent of all initiates are still living and in good standing. 18,535 alumnae paid dues to alumnae clubs for 1982-83, the highest number in several years. Congratulations are due the alumnae province presidents for their efforts in achieving the latter.

We hope everyone has returned the questionnaire from Harris Publishing Company updating personal information so that the new Pi Beta Phi Directory, to be issued sometime in the spring, is as accurate as possible. It's been too long since we've had such a directory available.

Now, as 1983 draws to a close, we'd like to remind you that the top is reached by topping yesterdays' accomplishments. We wish you a happy holiday season, with all the best to come in the new year.

marilynsford

Alcohol awareness is goal of Texas Gamma

The Texas Gamma chapter at Texas Tech University had one of its proudest moments last March.

The chapter sponsored an Alcohol Awareness Day. The event was planned to occur just prior to the university's spring break in order to make alcohol awareness and alcohol abuse uppermost in the minds of the students.

Texas Gammas worked hard for several days preparing for the "Think Before You Drink" alcohol campaign. Pi Phi decorated a car that had been involved in an alcohol-related accident which took the lives of several in the Lubbock area, and placed it in front of the University Center at Texas Tech. The condition of the car and the posters on the car attracted many questions from students and passers-by.

In the lobby of the Center, a table was set up with alcohol information available for the student body and faculty. Texas Gammas worked in shifts and encouraged students to sign pledges that they would watch their drinking during the month of March. The pledge read: "I _____ pledge to drink no more than two alcoholic beverages per drinking session during the month of March."

Approximately 500 students signed this pledge, promising to be aware of the alcohol they consumed and were in turn given a bright green sticker, which read: "Hug Me I'm Sober."

Keynote speaker for the alcohol awareness week was Reverend Robert (Father Bob) Hedges. A member of Sigma Alpha Epsilon fraternity, Father Bob works for the fraternity speaking on alcoholism. Early in the afternoon, Pi Phi escorted Father Bob on a tour of the Tech campus and to meetings with members of the Dean of Student's office. Father Bob also met with the members of Sigma Alpha Epsilon at their lodge.



Pleased with the results of their hard work were (back, l-r) Lori Cheadle, Karen Clifton, Susan Broom. Seated: Laurie Owen, Keynote Speaker Father Bob Hedges, and Melanie Bassett.



From the SAE lodge to the Pi Phi lodge, Father Bob was greeted by members and local alumnae of Texas Gamma. Dessert was served, followed by a Cooky-Shine.

The evening's program was held at the University Center theater. President of the Texas Tech Student Association read a proclamation, declaring Alcohol Awareness Day. Reverend Hedges addressed the group and answered questions for one and a half hours. Following his talk, as an added bonus, members of the audience listened to a performance by a local jazz band.

Father Bob encouraged the Pi Phi to continue efforts in alcohol awareness. The Texas Gamma Pi Phi were pleased to be able to communicate such an important message to the university.



Father Bob Hedges of San Angelo, Texas, was the popular, personable speaker at the evening program. He did not advocate abstinence from alcohol, but talked on the effects of alcohol on the body and mind, and suggested ways to be more aware of the effects.

Canadians plan for new project

by LOIS BADGLEY LAYCRAFT,
*Canadian Philanthropies
Chairman*

An exciting and unique new project for Canadian Pi Phis was created at the Convention in Louisville . . . the "Canadian Arrowmont Awareness Scholarship!" While Arrow in the Arctic will not lose its importance, it was decided to do something to increase our appreciation of our Fraternity's heritage, accomplishments, and goals.

Northern Pi Phis have often felt far removed from Settlement School and, unfortunately, only remotely connected with Arrowmont. Gatlinburg and those famous Great Smoky Mountains have been but names on the map to many of us. But in the wide world of Pi Beta Phi, no boundaries should exist to divide our fraternal pride and loyalty.

Internationally recognized, Arrowmont belongs to all of us and the new scholarship will help make Canadian Pi Phi more aware of the scope of this ambitious endeavour. One obligation of the award will be to share the Arrowmont experience, as much as possible, with other actives and alumnae in clubs and chapters at home.

Each year a committee of three will select an active or alumna to receive the scholarship which will provide a week's tuition, room, and board at Arrowmont for a summer course of choice. Economy airfare will be paid also. Points for consideration in selecting the winner will include: genuine interest in arts and crafts, enthusiasm for attending Arrowmont, and financial need. An essay must accompany each application to explain the reasons for wishing to attend the school. Application forms will be sent to each club and chapter in Canada early in February and will be available also from the Canadian Philanthropy chairman.

Judging by the excitement which greeted the announcement of the scholarship following the Canadian meetings at Convention, and the tears of joy shared with the Board of Governors of Arrowmont and other officers, it is quite certain that Canadian Pi Phis will be welcomed with open arms.



Lucy Jenkins with Porter Fortune, Chancellor of the University of Mississippi.

Jenkins represents state's hospitality

by MISSY PARRISH

Last summer Mississippi Beta Lucy Jenkins received an honor that few girls ever attain. Lucy was selected from 69 contestants to represent the State of Mississippi as Miss Hospitality.

The pageant, held in July on the Mississippi Gulf Coast, was sponsored by the Mississippi Department of Economic Development. As Miss Hospitality Lucy will travel throughout the nation representing the tourism, industrial, and marketing divisions of Mississippi.

The contestants were judged on the criteria of poise, personality and intelligence. "They judged us for eye contact and vocabulary, too," Lucy said. "As Miss Hospitality you have to be adaptive to any social setting—from talking to a group of girls to the lieutenant governor."

As winner, Lucy receives travel expenses, a complete wardrobe, a full scholarship, and can design her own antebellum dress for public appearances.

"This is an opportunity of a lifetime since it opens so many doors. The title means so much to me because I didn't have to put on any airs—I won just because of me. I went into it paranoid about my southern accent, but then I decided to just be myself," Lucy said.

"During the pageant all I could think about was how much the girl who wins is going to do. I knew winning could be the biggest open door to her future," Lucy continued.

A portrait of Lucy will hang in each of Mississippi's seven welcome centers, greeting Pi Phi sisters and others from across the nation.



Marcy Trieb, California Beta, spent last year traveling with an "Up With People" cast in Mexico and the U.S. The group performed in everything from bull rings, hospitals, and schools to performance halls.



1983-'84 FELLOWSHIP WINNERS—Three outstanding young women have received the Pi Beta Phi Fellowship for study during the current year. Left: Carla Swanson, 1983 graduate from the University of Washington, is now attending law school, pursuing her J.D. degree. Center: Catherine Fedako earned an A.B. in Engineering, with emphasis in pre-medical courses. A 1983 graduate of Lafayette,

Catherine is currently enrolled in Johns Hopkins School of Medicine. Right: Susan Ash Williams earned a B.S. degree in History/Business from Bradley in 1978, and is studying at Indiana University for her MBA in Human Resource Management/Finance. Susan was Pi Phi's national ABO winner in 1978.

Jean West receives Panhel award

by KATHY WELCH HALL

Jean Dayton West, portraitist, community leader, and a Golden Arrow member of the South Bay Alumnae Club, received a South Bay Panhellenic Community Achievement Award at its spring luncheon in Palos Verdes Estates, California.

Jean's family spans four generations of Pi Phis. In addition to her mother, Jean's three daughters and a granddaughter are sisters in the Wine and Blue.

She graduated from the University of Iowa in 1916, with a degree in art. Her first award came when she entered a self-portrait contest and received second prize—losing only to Grant Wood.

Jean married her childhood sweetheart, the late Dr. Leonard West, while he was still in medical school. When Dr. West was sent to China as an Army Air Force surgeon, Jean was not permitted to accompany him, so she returned to the University of Iowa for her Master of Arts Degree. She later studied at the National Academy of Design in New York, under Charles Hawthorne and Frances Jones.

Jean believes that the eyes are the most important part of the face. Her portraits are done in oils or pastels, and she has painted many residents of the Palos Verdes area, a suburb of Los Angeles. When she was commissioned to paint Father Geiger of the Franciscan Order in Santa Barbara, she was the only woman ever to stay in the monastery itself.

She has won gold and bronze medals at the Iowa State Fair. Her portraits have been widely exhibited throughout the Los Angeles area, and she was honored with an exhibition of her work at the 1936 Pi Phi Convention in Chicago.

As well as being a past president and founding member of the Palos Verdes Community Arts Association, Jean belongs to The Paletteers, the Laguna Art Association, and Women Painters West. She is listed in "Who's Who in Art in America" and "Who's Who Among American Women." This gracious and talented lady is indeed a jewel in the shaft of the Pi Beta Phi Arrow.



Cynthia King, Indiana Gamma, is a journalism major at Butler University. She began modeling last winter, and has done photography work and television, and has appeared on Indianapolis Afternoon and the Jim Genard Show.



The Pi Phi-Phi Delt team burned down the fieldhouse during Campus Carnival last spring with their hot theme, "Old Fashioned Pumphouse."

Campus Carni nets thousands

by SUSAN KJOS

Energy, excitement, blaring bands, great food, and fun for all ages abounded in the fieldhouse at the University of Minnesota during their annual Campus Carnival last spring. During "Carni," a sorority pairs with a fraternity to work together to create a winning band, skit, set and danceline. Each team has a central theme to work around.

Minnesota Pi Phis teamed with Phi Delta Theta taking on the theme of "Pumphouse." After months of laying bricks, memorizing lines and music, and getting those last tricky dance steps down, the Pi Phi-Phi Delt combo was ready for that opening night. In the end, they were awarded a second place overall after the judging of five categories.

Carni remains the largest collegiate fund raiser in the United States. For the second consecutive year, the proceeds went to the Children's Heart Fund—over fifty thousand dollars!

Israel experiences are rewarding

by LISA AZENBERG

Shalom! Mashlom'ech? (Hello! How are you?) is the greeting I received on my arrival at David Ben Gurion Airport in Tel-Aviv, Israel.

Studying, and living in a youth hostel in Jerusalem for six weeks is not what one might expect it to be. It is exciting, educational, adventurous, challenging, and rewarding.

Our studies, though not tremendously demanding, allowed us to travel and sight-see throughout the country. Friends and I were able to do many things. We visited the Golon Heights, the Garden of Gethsemane, Nazareth, Caesarea, Egypt, and Eilat (often known to have temperatures as high as 140°). We swam in the Sea of Galilee, floated on the Dead Sea, climbed Masada, and camped in the same oasis where King David had his "summer home."

Our classes also helped us experience what it is like to live on a kibbutz, a type of communal living developed by the first men and women to settle in Israel in 1910. Though I am not very good at waking at 4:00 a.m. to go to work in the

fields, I will admit that the work they do and their existence as communities in Israel are essential to the development and well-being of the State of Israel.

We also were able to experience what life in Jerusalem was like, both past and present. The Old City allowed us to try out our bartering talents with the Arabs. Even though we were not the most skilled, it was still fun. Within the Old City is where the heart of Israel lies, for there stands the Temple Mount, which is one of the most holy places in all the world to the three major religions of the world. This mount is what draws many people to Jerusalem for here are the Dome of the Rock Mosque, the Rock where Abraham was to sacrifice Isaac, and the Wailing Wall, which served as a buttress to the first temple. Outside the Old City's walls lies a modern city complete with hotels, supermarkets, restaurants, discos, and nightclubs.

Israel is a country of men and women who have come to a common place to strive for something they believe in and are willing to fight for.

Dorothy Truex retires amid state-wide accolades

April 8, 1983, was Dr. Dorothy Truex Day in the state of Arkansas, so proclaimed by Gov. Bill Clinton. Following a number of "whereases," such as "Whereas, Dr. Dorothy Truex is the highest ranking female college administrator in Arkansas;" "Whereas, [she] has served as Vice Chancellor of the University of Arkansas at Little Rock for nine years;" and "Whereas, [she] is retiring as Vice Chancellor . . .;" the day was set aside to honor a special Pi Phi.

Dorothy Truex, Oklahoma Alpha, was the honor initiate at the Vancouver Convention in 1964, and she has been an active alumna ever since. A current member of the Little Rock Alumnae Club, she affiliated with the group when she first went to that city nine years ago.

The reason she was honored by the governor goes far beyond her Pi Phi affiliation, however. She has been a Dean of Women at three institutions, the Director of a Graduate program in Student Personnel Services, and, at retirement time, was Vice Chancellor for Student Affairs at UALR. She was known for her humor, charm, wit, persuasive power, and her dedication and commitment to help students and new professionals develop their full potential.

"When I was 12 years old, I decided that I wanted to be a dean of women," Dorothy said recently. "It was after a visit to the campus of William Jewell College. I watched the dean of women at work. She seemed to be a lady who was always well dressed. She served cookies and looked after people and never had to do any housework."

She enrolled at William Jewell and took her bachelor degree in English. She earned a master's degree in educational guidance and counseling at the University of Missouri, and a doctorate at Columbia in 1954. Her first job was as assistant dean of women at Northwest Missouri State Teachers College. She went on to be dean of women at Mercer University in Macon, Ga., and then to the University of Oklahoma, where she stayed for 27 years. She went to UALR in 1974 as the highest ranked woman in education in Arkansas.

Her walls and shelves are lined with awards and certificates. Her aggressive policy-making manner was the target of most of the jokes told when she was roasted by her colleagues at a recent tribute held in her honor.

Reading from a list she called "Truex's Truisms," Dean Mary Jean Thomas cited the first truism, "It is foolish to keep silent when a few words will cause all hell to break loose."

But, in addition to being known as a tough administrator, Dorothy was known as a soft touch where students were concerned. Since she went all the way through school on scholarships, she felt that everyone who needed financial help should be able to get it. So she admits to being pretty free-handed, lending money to students when she wasn't supposed to. Those same students are quick to express their thanks to Dr. T.

"I knew my duty when I came to UALR," she says. "Be an advocate for students, cut through the baloney, and enable students to move toward their goals. I enjoy recognizing students who do well."

At Arkansas her accomplishments include establishing a

system of grade appeals, having a student bill of rights drawn up, pushing for the 1977 enlargement of the Student Union, and seeing to that an information center was established in the Union to tell students where to go for help.

She also recognized outstanding students by establishing the Chancellor's Leadership Class, the University Scholars, and Alpha Epsilon, a freshman honor society.

Dr. Truex has been known to admonish professional women seeking success to learn to "play the game like the boys do." What this means is:

"Don't let them dump on you."

"Never go to a meeting unprepared—know your topic and what you're going to say."

"Don't ever put yourself in the position of having to say, 'I can't do something because I have a hair appointment.' Find out what 'tea time' is for the boys and have your hair done then."

"Work at the same pace as 'the boys' because to work harder will create jealousy."

"Learn to know when to fight and when to run; don't build up ill will over little bitty things. I think women tend to focus too much on minutiae."

One good friend says of Dorothy, "She will be an example for us even in retirement, because she will have new ideas, projects, and causes. I think of Dorothy Truex as the antithesis of burnout."

Dr. T. herself says that she's not really retiring. She will be working part-time in alumni and development promoting the university and helping to raise some funds. She intends to mesh her life-long interest and her intense energy into getting the loyalty of UALR's alumni to blossom.



Mississippi Beta Patti McDaniel spent her summer months in Washington, D.C., as an intern to Representative Trent Lott of Mississippi. Patti spent two months on Capitol Hill and felt it was a wonderful experience.

Four earn scholarships for continuing education

by JANIE PURLEE SHIRLEY

The Alumnae Committee for Continuing Education is pleased to announce the four recipients of this year's awards.

Virginia Stewart Wall, Ohio Epsilon, is a law student at the University of Toledo. She is married with three small children, and works part-time as an on-call staffing coordinator for a health care service. She has seven years service to Pi Phi alum clubs and significant community involvement. She probably would have been unable to return to school this fall without the scholarship.

Joyce Wherritt Bowers, Utah Alpha, is a Phi Beta Kappa who lives in Orinda, Calif. She is married with three small children and has served as her alumnae club's rush chairman since 1975. Joyce has been an active community volunteer. She will use her scholarship to work on her M.A. in Art and Classical Archeology at San Francisco State University. There are eleven Pi Phis in her family!

Susan Coon Johnston, Oregon Alpha, is a single parent with four small children. She is a Ph.D. student in psychology at the Oregon Graduate School of Professional Psychology and has maintained a 4.0 grade point average. The scholarship will enable her to attend school full time and complete the requirements for her degree by December, 1984. Susan has been active in her alum club. A former school teacher, she also has been an active community volunteer for the past ten years.

Mary Ann Bagley McCollum, Alabama Alpha, has been a math teacher since 1970. She currently teaches gifted students in Birmingham. A Phi Beta Kappa, Mary Ann is working on an AA teacher's certificate and a Ph.D. in Instructional Leadership at the University of Alabama. Her scholarship enabled her to attend school full time in the summer (with a 120 mile per day drive). Her husband is a professor and they have three children, two of whom are college students. Mary Ann has been active in several Alabama alumnae clubs.

Continuing Education Scholarships are available in two categories: to those Pi Phi alumnae who have been out of school at least five years and who will be full time students, and to those who have been out of school at least two years who will be pursuing career qualifying goals. Scholarships are granted for one year and recipients may reapply. The committee considers service to Pi Phi through alumnae club activities, as well as career goals and financial need.

Interested alumnae are encouraged to write Janie Shirley, 9444 Highedge, Dallas, Texas, 75238, for further details. Applications for the 1984 awards must be returned by January 15, 1984.



Pi Phi Peg Parsons Gobar, left, is president-elect of the California Medical Association Auxiliary, the largest state medical auxiliary. Presenting her with a token of esteem from her local San Francisco Auxiliary is its president, Sallie Peele Allen. Peg is a member of the San Francisco Alumnae Club and Sallie belongs to the Marin County Alumnae Club. (Photo—Ed Lawless)

Haines spends summer on Alaskan pipeline job

Last summer Vermont Beta Betsy Haines had an opportunity to work in Alaska on the Trans Alaskan Pipeline. As a mechanical engineering student at the University of Vermont, Betsy thought it would be beneficial to find an engineering related job for the summer months. Since her home is in Anchorage, she had a prime opportunity to work as an engineering intern for a pipeline service company.

In addition to meeting many interesting characters and gaining invaluable supervisory experience, she met a Pi Phi alumna at Pump Station 1, one of the northern most points in the state, right on the Arctic Ocean.

If staying one step ahead of the work crews on the pipeline wasn't enough, outrunning those large Alaskan mosquitos was a real job! A special thrill was to see a grizzly bear for the first time at a scary 30 feet. Another not uncommon sight was a herd of caribou wandering around the living quarters. The only problem she had all summer was trying to sleep at 11:00 p.m. with the sun shining in her eyes!

It was an experience Betsy will never forget and one she enjoys sharing with others.

Iota Province State Day
April 7, 1984
Columbus, Ohio

For more information and reservations please contact:

Mrs. Delos Palmer
220 W. Harrison
Maumee, Ohio 43537



Phyllis Hayden is installed as Directress, National Association of Diocesan Altar Guilds by the Rt. Rev. John M. Allin, Presiding Bishop.



Nancy Kemp

Churchwomen discover Pi Phi bond

Three outstanding Episcopal churchwomen have discovered the tie that binds in Pi Beta Phi also. All three are members of the Board of the National Association of Diocesan Altar Guilds (NADAG).

Phyllis Briddell Hayden, LaCrosse, Wisconsin, is the current president of NADAG. Nancy Haycock Kemp, Woodland Hills, Calif., is one of two Members-at-Large. Mary Moore, Scottsdale, Ariz., and Davenport, Ia., is an honorary member of the Board.

The Pi Phi bond was discovered during the Triennial convention of the Episcopal Church in New Orleans a year ago. The three serve along with nine other women.

Phyllis Hayden is a graduate of Syracuse University where she was an initiate of New York Alpha. She holds a Master of Music degree and is a pianist. She has been active in church work for many years, and held the offices of secretary and first vice president of NADAG, prior to her election as president.

Nancy Kemp, Nebraska Beta (UNeb), has been Directress of the Diocesan Altar Guild in the Diocese of Los Angeles for almost the same length of time she has served at Phi West Alumnae Province President in Pi Phi.

"I meet lots of Pi Phis at Altar Guild meetings, and lots of Episcopalians as I visit the Phi West clubs," writes Nancy.

Nancy was chairman of her own church Altar Guild three times and director of the church needlepoint project. She also volunteers at the Motion Picture and Television Hospital.

Miss Mary Moore is an Illinois Beta-Delta initiate. She conducts an importing business of Irish linens, woven to her specifications, for the altars and communion tables of churches of many denominations in every state and many countries of the world. She and her employees also ship hundreds of yards of Irish linen to altar societies and sisters who wish to make their own goods.

Mary is one of four honorary members on the board.



Mary Moore

Stanford honors Megan Chestnut

Megan Ann Chestnut, California Alpha, was named the fifth recipient of the J. E. Wallace Sterling Award, given annually to a Stanford University senior who has displayed outstanding leadership potential.

The award is the Stanford Alumni Association's highest honor for a student.

Megan was staff coordinator at Roble Hall during her senior year and was president of California Alpha.

A psychology major, Megan has a wide background of experience with the developmentally impaired, much of it

as a volunteer. She also directed and choreographed, danced, and acted in campus dramatic and musical productions.

The citation mentions the "whole-heartedness of her commitment to others and the energy and infectious enthusiasm that are the trademarks of her life and work" as well as "the unwavering quality and substance of her contributions to the residence program, to music and drama at Stanford, to departmental research, to counseling and tutoring, to physical therapy and human services."

Sally Smith is manager of Scottish craft agency

by MARILYN S. FORD

A soft voice with an unmistakable Scottish accent came on the phone line. Slightly taken aback, we questioned if we were talking to Sally Johnson Smith, Iowa Gamma Pi Phi.

"Yes," said the musical, smiling voice. "I've been in Edinburgh for twenty-five years, so perhaps that's why I have a bit of accent!"

Sally was graduated from Iowa State in 1958, with a Bachelor of Science degree in Applied Art. It was in Ames where she met her former husband, a Scotsman, and they returned to his country after their marriage. During those college years, Sally spent a summer at Arrowmont. Now she is Crafts Manager of the Scottish Development Agency, with a staff of ten.

In her position she is responsible for providing government-funded assistance to craftsmen in Scotland. Since she became Crafts Manager in 1978, the agency has undertaken several new activities. A Scottish Crafts Collection was begun in 1979 and now has 158 objects, a full time curator, and an active touring program in the United Kingdom and abroad. It was just such an exhibit that Sally took to Houston, Texas, a year ago during that city's British Festival.

Under Sally's direction, "Scottish Crafts Now," a glossy publication showing the work of 80 craftsmen in Scotland, was designed and produced. It is a major publication which is a definitive book on contemporary crafts in Scotland. The agency publishes and distributes a bi-monthly publication with a circulation of 14,000. New projects, such as mid-career training courses for professional craftsmen, have been developed in association with Scottish Colleges of Art, with some 70 craftsmen taking part each year. Craftsmen in residence schemes at secondary schools and museums have been established and slide lecture packs for schools have been developed.



Sally Smith, against a background of oversize pots in natural clay by a Scottish potter, as she was hostess at the British Isles Craft Exhibit in Houston.

Sally's position involves a great deal of traveling. When we talked with her in August, she had just returned from a business trip to Australia where she represented the United Kingdom and Europe at a conference on Apprenticeships in the Crafts. This was an international event sponsored by the Australian Crafts Council and the Council's recommendations will be directed to UNESCO via the World Crafts Council.

"Fortunately, the British Council and my employers sponsored my trip and enabled me to visit crafts administrators in Sydney, Adelaide, Melbourne, and Perth," wrote Sally later.

Scottish Beginnings

"When I first came to Scotland," said Sally, "I spent twelve years as a mother while doing free lance design work—interior design, kitchen design, and exhibition design."

Her son is now in the Doctorate program at Cambridge. Daughter Maggie is taking post-graduate work at the Royal College of Art in London. At the time of our visit, during the Edinburgh Festival, Maggie was holding an exhibit of her paintings in the Watchtower in St. Cuthbert's churchyard. The Watchtower is Sally's studio where she sculpts in wood, bronze, and clay in her free time. Because she did restoration work on the Tower, Sally is able to rent it for one penny a year. The narrow, circular, stone steps to the second floor were worn from the many footsteps of guards who watched over the graveyard below to discourage grave robbers.

Sally has exhibited her sculpture at the Royal Scottish Academy. She is interested also in landscape and architectural photography.

"Arrowmont was very influential in my life," said Sally. "I studied jewelry and weaving and took a general design course. My interest in crafts was confirmed at Arrowmont."

The influence of Pi Beta Phi's school in the mountains of Tennessee continues to expand—as ripples on the water.

The Watchtower in Edinburgh which is Sally's sculpting studio.



Jan is mover & shaker



Jan Faiks has "grabbed Alaska's capital city by the throat," and intends to straighten out some things in the state senate.

Most elected officials take an aide or secretary to the legislative session, but Anchorage, Alaska, Senator Jan Ogozalek Faiks, Florida Beta, may have set a new precedent with her two llamas. Jan has raised and trained llamas since 1978, and sells them to other Alaskans. (See *The ARROW*, Fall, 1979) The two now sharing a fenced acre in Juneau are Frodo, the male, and Penelope, the female. They are housebroken, and wander in and out of Jan's house.

Jan is known not only for her animals, however. She was elected to the Alaska Senate in November, 1982, after a hard fought, close, Republican primary victory. By mid-May, 1983, she had been selected by her peers as the most promising freshman lawmaker. She represents South Anchorage.

She always has respected achievement and people who do their homework. From ten years preparing Anchorage high school seniors for college mathematics, Jan said she learned if she didn't know what she was doing she'd be eaten alive.

Being a legislator is much more of a challenge and much harder than she expected because of the range of statewide problems that have to be solved. She has two immediate interests. As chairman of the Senate Rules Committee, Jan is determined that order be established. Calling the capital press corps grubby, she called for a dress code for reporters on the Senate floor, and got her way without objection, except from the press corps.

Following that, she made another rule: no more free food in the legislative lounge. She complained that nothing was written down in the legislature, and plans to leave a manual for the next Rules chairman.

The Rules committee approves most Senate hiring, and, according to a listing of staff compiled by one of Faiks' aides, several senators have broken a staffing policy outlined in a December memo from Faiks and the Senate president. Jan is

on record as opposing large legislative staffs. Therefore, she called a meeting to look at overstaffing, with the possibility of ordering some staff laid off or their pay cut.

Jan is a petite, fashionable, 37-year-old with the unmistakable characteristics of a cheerleader, according to one news writer. She is an avid tennis player in Anchorage, but she says she hasn't had the time or the energy to play since going to Juneau. She used to have lots of hobbies and outside interests, but has abandoned all of them except hiking with her llamas at least twice a week.

Linda Ohling Bell, Washington Beta, writes, "Jan is one of the people who make Anchorage a terrific place in which to live. Along with many commitments and a deep involvement in Alaska state government, she wears her Arrow proudly and has a real commitment to the sisterhood of Pi Beta Phi."

Jan is a past president of the Anchorage Alumnae Club and has been Convention delegate four times. She was the first Alaskan alumna to attend a national Pi Phi Convention. She is the one whom the club has relied upon for yearbooks, entertaining visiting alumnae province presidents, and providing a place for the yearly Arrowcraft sale.

Jan Faiks is a business woman, a teacher, an author, an award winner, a civic worker, a public servant, and a dedicated Pi Phi. Who could ask for more?



Although Sandra Barnett, a junior at San Diego State and a California Epsilon, has been modeling off and on since she was a little girl, she doesn't plan to make it her career. Her major is child development and she hopes to start her own pre-school in the future. Those children will love their pretty teacher!

NEWS OF **ARROWCRAFT** and **ARROWMONT**



Arrowmont promotes arts and crafts across the country and in the town of Gatlinburg in a variety of ways. One of the best ways in which tourists and local residents become involved is through demonstrations on the mall.

Talented student assistants, as Amy McDonald, above, representing various media, set up their equipment in front of the Arrowmont display cases between Arrowcraft and the Administration building. This fronts on the heavily traveled main street of Gatlinburg, thus attracting the curiosity and

interest of passers-by. Demonstrations include ceramic wheel throwing and handbuilding, stained glass construction, spinning, weaving, fabric, screening and resist, blacksmithing, and painting.

The demonstrations are interesting and fun but, most importantly, serve to educate and inform the public of the importance of the visual arts in everyday life and the varied technical aspects of a medium which can be learned at Arrowmont.

Sandy exhibits sculptural forms

Sandy Blain, Director of Arrowmont/Arrowcraft and Associate Professor of Ceramics at the University of Tennessee, utilized her spring leave quarter to produce a body of work for two fall exhibitions. The Clay Workplace, Nashville, Tenn., and the Woodstock Gallery, Kansas City, Mo., exhibited several of Sandy's new sculptural forms.

The pieces document a vital force within contemporary ceramic art: the use of the traditional vessel form as a vehicle for personal aesthetic statements. Through history the vessel has acquired a capacity to symbolize accrued human experiences, and, for Sandy, the three dimensional form offers the opportunity for the exploration of inside and outside surfaces and space. Imagery is related to the circus—that ponderous spectacular event which allows the artist to forget her daily cares and enter a world of wonders.

Using a low fire red or white clay body, intense coloring, surface impressions, and asymmetrical patterning are characteristic of the thrown and/or handbuilt pieces. Drawing, stamping, stenciling, and airbrushing techniques are used with slips, underglazes, and overglazes to achieve the organic/inorganic bold pattern areas. The pieces undergo multiple firings to achieve a dramatic sense of depth and visual complexity.

The footed vessel form provides for dynamic imagery related to the circus—the arena, an in-the-round production filled with action and movement and enhancing many lives.



"Improvisation #6" of Sandy Blain's Circus Basket series, stands 20 inches high, and is 9½ inches deep, and consists of thrown and extruded forms.



Student assistants Amy McDonald, Pat Lynch, Toni Price, and Mercedes Saldariaga (l-r) cook hamburgers as part of the weekly Arrowmont picnic in the summer.

Food at its best for picnic

Summertime means picnic time and Arrowmont is no exception. Everyone looks forward to the weekly barbecues held for students and staff. Staff assistants work with Sandy Blain and Clare Verstegen to barbecue ribs, chicken, and hamburgers over a large grill, with several other good ol' home cooked foods also provided—"Bessie's Brownies," salads, and more.

The groups have a lot of fun gathered in the picnic area located behind the big Red Barn dormitory on campus. After dinner there is usually singing and volleyball.

A piano was wheeled outside for the Fourth of July picnic. Staff assistant Pamela Wiley, dressed in red, white, and blue, entertained the group, with Caryn Kreitzer, store clerk, joining in on guitar.

It was a glorious Fourth!



Pi Beta Phi Elementary School classes regularly visit the Arrowmont Gallery with their teachers to see the changing exhibition. Here they contemplate whether or not that realistic looking slice of watermelon would really be very tasty.



Victoria Van Marren, Citrus Heights, Calif., Cramer Management Scholarship recipient, cleans a leaded glass panel she made during a two week stained glass class.

Apprentice sings praise

by VICTORIA VAN MAREN

Unique, outstanding, and thriving are just a few of the words frequently used to describe the Arrowmont School of Arts and Crafts and the Arrowcraft Shop. While these superlatives fail to describe the specific functions and activities of the philanthropy in Gatlinburg, they are certainly truthful and well merited.

I spent last summer in Gatlinburg, Tennessee as the Isabel M. Cramer Apprentice in Business at Arrowmont. Even after three months living and working on campus, I find it difficult to describe in just a few paragraphs the many accomplishments and activities of the philanthropy. But I do know what I feel after a closer look, and that's great pride. This feeling was reinforced over and over again by students, teachers, and visitors to the school who expressed their good feelings.

The Isabel M. Cramer scholarship is a wonderful opportunity for Pi Phi to learn more about the total philanthropy in Gatlinburg. Intended for business majors, it exposes the management trainee to the operations of both the school and the craft shop. I learned a great deal working in the school's book and supply store and the Arrowcraft Shop. Other activities included assisting with registration, collection of bills, and working as a receptionist.

One of the highlights was enrolling in a two week stained glass class. While giving me a different perspective on the philanthropy, being in class also helped me identify with students and teachers at the school and understand their needs. The stained glass course, instructed by Charles Devillier, was a great introduction to the medium and I hope to continue with it.

Many Pi Phi attend classes at Arrowmont. I wish it were possible for every Pi Phi to see the school in action. It is everything we think it is and more. We can all show our pride through continued financial support. I encourage all active chapters to renew the energies they direct toward fund raising activities for the philanthropy and I also hope that alumnae clubs everywhere participate in local Arrowcraft sales. Both are essential to the continued success of the Arrowmont School and the Arrowcraft Shop.

Arrowmont atrium glows with beauty of new window

As if by magic, a brilliant rainbow of colors now dances off the floors and walls of the gallery atrium area of Arrowmont. The added dimension and depth to the area is the result of a recent five-panel stained glass installation.

The large window panels were designed and constructed by Charles Devillier, stained glass artist and instructor at Arrowmont last summer. Devillier, a popular instructor, has taught at Arrowmont many times. He wanted to create a piece to leave as part of the architectural structure.

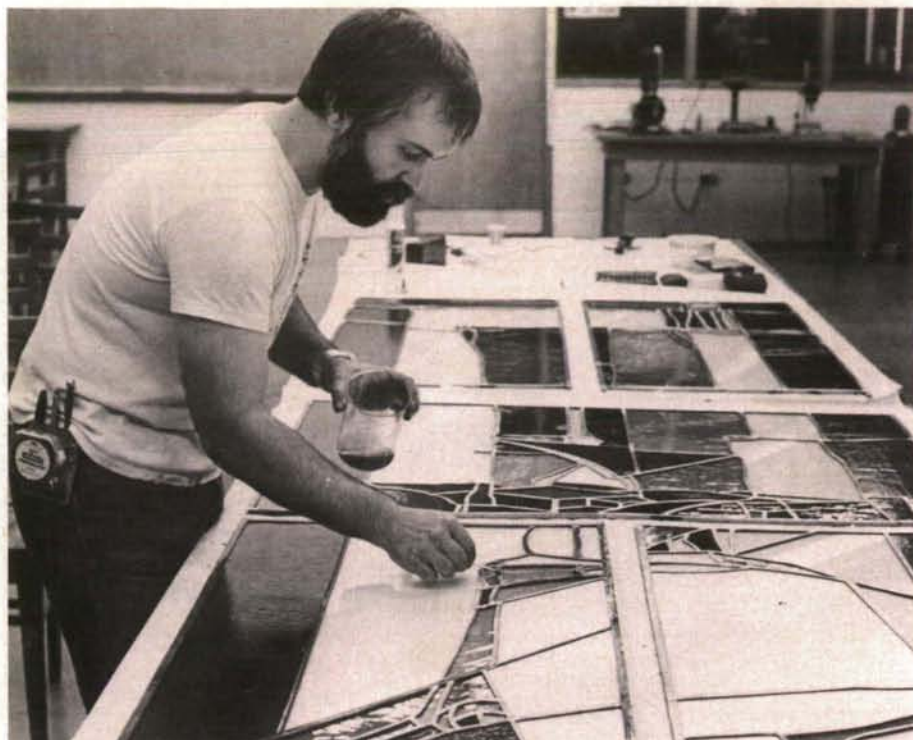
This summer Devillier found the time and assistance to complete the atrium window. Students in the stained glass class assisted with the installation and closely followed the exciting design and construction by Devillier.

Pi Phi will delight in the design that includes a large arrow. With the help of a little sunlight, the arrow almost bursts into the room. The window is exciting to look at at different times of the day. A rainbow of colors light up the atrium area during the day and at night the panels light up the outside of the building with a glow of brilliant colors.

Arrowmont's director Sandy Blain noted that the piece is more than merely artwork on the wall. "It softens the architectural structure," noted Blain. It is hoped that more stained glass windows will be constructed in the future.



Stained glass panels are installed by artist Devillier.



Charles Devillier, stained glass artist and instructor, cleans lead prior to installation of the stained glass window in Arrowmont's atrium gallery area.



The first indication that the holidays are approaching comes with the cutting of the Christmas tree at Arrowmont.



Donna Burns, Bryan, Ohio, a member of the Arrowmont Board of Governors and a summer photography student, analyzes flower composition prior to shooting.



Potter instructor Susan Benzle demonstrates how to apply colored slip to Gary Bullard's pot while he, Audry Heatwole, and Barbara Bullard (right) look on. The Bullards attended Arrowmont on Nashville Alumnae Club scholarships.



Houston Pi Phi Ann Wollam, left, applies dye to a fabric wall hanging in a textile resist class.

Judge Bowker retires from Canadian bench

After seventeen years on Alberta's family and juvenile court bench, Judge Marjorie Montgomery Bowker has stepped down. The court rigor has been absorbing and demanding and Judge Bowker says she's worn out.

Initiated into Pi Phi at the University of Alberta in 1936, Marjorie graduated in law in 1939, was admitted to the Alberta bar in 1940 and practiced for several years with a leading Edmonton law firm. In 1966 she became Alberta's first woman family and juvenile court judge.

Three years into her judgeship, Marjorie concluded the law was leaving a lot of family problems unsolved.

"I was firmly convinced the law did not have all the answers," she said.

Experiments began with a court-centered, extra-legal counseling service for separated couples. In 1972 the federal government funded the first conciliation service in Canada. It's now a permanent appendage of Alberta's family courts.

"It was only [Judge Bowker's] personal drive and commitment to the concept of the conciliation service that got it moving," says Anne Russell, a legislative planner with the Department of Social Services and Community Health.

It was largely for her work in this field that, in 1978, she was awarded the Queen Elizabeth Silver Jubilee Medal, and, in 1981, the Alberta Achievement Award. Last June she received the Award of Merit from the American-based Association of Family Conciliation Courts, on the board of which she served for ten years.

In 1968 she was invited to Ewha Women's University in Seoul, Korea, as one of three international guest speakers. On



Canada's Judge Bowker

that occasion she was awarded an honorary degree of Doctor of Laws.

Her husband, Wilbur, to whom Marjorie has been married for 42 years, is well-known in Canadian legal circles, having been Dean of Law at the University of Alberta for 20 years, and later, Alberta Director of Legal Research. The Bowkers have three children.

Judge Bowker retired last June. Shortly before her retirement she delivered a 64-page judgment which has been hailed as a landmark decision in Canada on the issue of parental rights in respect to corporal punishment of children.

Although Marjorie has retired from the court, she continues to be concerned about "a moral hunger among young people," and she wants to help start new United Church congregations for '60s youth who are now reaching out for faith.

Marjorie is a member of the Edmonton Alumnae Club and has served as its president twice.



On a trip to California over Labor Day weekend, three University of Arizona Pi Phis dropped in on the UCLA Pi Phi for a reunion with friends met at the Louisville Convention. Front: Joanna Farrington, Cal Delta, and the three Arizona Alphas, Daria Hunchar, Kelly Butler, Carole Banen. Middle: Cal Deltas Sue Long, Lisa Ellman, Charlotte Macleod, Elizabeth Cameron. Top: Robin Assaff, Jill Jones, Nancy Furlong, Cal Deltas.

POEM

Pi Phi is a chain of gold
Shaped in God's all perfect mold
Each link—a smile, a laugh, a tear,
A grip of the hand, a word of cheer.
No matter how far or heavy the load
Sweet is the journey on Pi Phi's friendship road.

LINDA ROBERTS, *Texas Epsilon*
North Texas State University

short stories of sagacious sisters

Illinois Iota, Illinois State

Long tedious practices paid off when the chapter placed third in the Chi Omega talent show last spring. All fraternities and sororities on campus performed musical acts or skits, and Pi Phi performed various songs from "Grease."

Pennsylvania Beta, Bucknell

Friendships were celebrated this fall by designating one week as "Appreciate Your Big Sister Week." Included were such activities as taking one's big sister to dinner, a "Come Dressed as Your Big" party, and writing poems about fun times had with big sisters.

Florida Epsilon, Central Florida

Two members were selected to participate in the 1983 Pi Phi Convention. President Heide Lancaster was appointed to the Tellers Committee for the election of Grand Council and Directors, and the chapter was honored by NPC Delegate, Annette Mills, when Julie Hayes was selected as a Page for one of the general sessions.

Missouri Alpha, University of Missouri While fulfilling the duties of chapter secretary, Paige Martin participates in several campus organizations. She is president of Student Foundation, works as a career information and placement specialist, participates in the International Studies and Program Student Faculty Committee, and is involved in the Docent Training Program for the university's Museum of Art History and Archaeology.

Utah Alpha, University of Utah

A special thanks is extended to the chapter's super alums for all the time, money, and effort that went into making the house the most beautiful on campus. Because of their outstanding support and dedication, according to Monica Bettin, the house is beautifully decorated in wine and silver blue, and this was a big reason for the successful rush week.

Louisiana Alpha, Sophie Newcomb

Leigh Ann Blackwell, chapter president, was the first recipient of the Raymond A. Esthus Award, as the outstanding student in the junior class. The chapter won the Greek Award for 1982-83, having the most points for providing service to the community.

Texas Delta, T.C.U.

Teresa Davis, a spring graduate, is an anchorwoman on the Channel 11 news in Fort Worth. Teresa earned her degree in broadcast journalism.

Iowa Beta, Simpson College

The chapter received the Intra-Sorority Grade Cup for maintaining the highest GPA for two semesters. If they earn it a third time, they will retire the cup to their trophy case. The chapter had a 3.0 or better GPA for the 1982 calendar year.

Indiana Eta,

Indiana Purdue at Ft. Wayne

Norma Knoop spent the first week of August as a counselor in a camp for the deaf. Norma has taken sign language classes at IPFW, but this was her first experience working with the deaf in a summer camp atmosphere. She found it a very rewarding experience.

Arkansas Beta, U.A./Little Rock

The school year began with a gigantic picnic at Pinnacle Mountain State Park. All fraternities were invited and the picnic was a huge success. There were volleyball games, touch football, watermelon eating, and lots of good Pi Phi fellowship.

Ohio Alpha, Ohio University

Terri McFillen and Cathy Herendeen had summer internships in Washington, D.C. Terri worked for Congressman Wolf from Virginia during the summer, and had another internship last winter when she worked for the

State Department of Public Affairs. Cathy interned for WJLA, an ABC affiliate. She covered a lot of ground for consumer reports and helped with some production for the station.

Missouri Beta, Washington University Michelle Middendorf, a graphics design student, was awarded a \$200 scholarship this fall, selected for the quality of work done in her studio art classes last year.

Six Pi Phis were Rho Chis (rush counselors) for fall rush this year. Jenny Becker-Brydges, Meg Roman, Kim Schmuck, and Panhellenic officers Debbie Berman, Oleta Lane, and Lisa Marcus took training for Rho Chi at the end of spring semester last year.

Colorado Gamma, Colorado State

Lisa Knipp and Stacey Doan are members of Golden Rams, an organization formed to provide support and assistance to the CSU football team.

New York Delta, Cornell

Judy Marlinski participated in a summer internship as a graphic artist for Studio Arena Theatre in Buffalo. Her experience in graphics layout and design confirmed her interest in an advertising career.

Louisiana Beta, Louisiana State

Mitzi Galloway, a theater major, has held leading roles in two major LSU productions and next summer will participate in the Miss Louisiana Pageant in Monroe. Her talent is singing.

Florida Alpha, Stetson

Julie Korfage was elected last spring to edit Stetson's 1984 yearbook, *The Hatter*. Julie recruited a number of Pi Phis to work on the staff with her, including Panhellenic's official photographer, Jennifer Lloyd, who will be the *Hatter's* photographer.

Idaho Alpha, University of Idaho

There are some super Idaho Vandal supporters in the Pi Phi house. Ruth Eccles is a cheerleader; Chris Brutsche, Cathy Holmes, Jessica Wingard, and Teresa Logosz are members of the pep squad; and Lonna Laude and Patty Neberker are members of Golden Girls, a halftime performance dance squad.

Arizona Beta, Arizona State

Debbie Henscheid has received much

deserved recognition for her scholastic achievements. She holds membership in Blue Key, junior honorary, and Tau Beta Pi, engineering honorary, and just recently was honored with a certificate of scholastic excellence in the college of her major, Bio-Engineering.

Colorado Alpha, University of Colorado
Nine Pi Phis were rush counselors for the 1983 fall rush, chosen by Panhellenic. Beth Baker, Lynn Foster, Jodi Hindsley, Lauri McLaughlin, Lisa Riley, Julie Smith, Nancy Ullemeyer, and Lisa Yates all helped take over 1,000 girls through rush.

Illinois Eta, Millikin

Eight freshmen camp counselors welcomed incoming freshmen this year. They were Teri Periman, Julie Bowen, Cathy O'Dea, Jill Newman, Diane Attig, Jennifer Johnson, Tara Harvel, and Michelle Twitchell.

Illinois Alpha, Monmouth

During Honors Convocation last May, Panhellenic council presented the Most Outstanding Pledge Class Award to the '82-83 Pi Phi pledge class. The award is based on unity, community service, campus service, academics, and sisterhood.

Kansas Alpha, Kansas University

There are five straight-A students in the chapter. The super-smarties are Laura Burns, Marilyn McBride, Ann Powell, Sarah Rossi, and Katy Stutz.

Mississippi Beta, Ole Miss

The chapter competed against ten other sororities and captured the spirit award for the first football rally.

Susan Garraway was one of ten women elected a Campus Favorite by the entire student body. 25 girls vied for the honor.

Colonel Rebelette for the 1983-84 Rebelette Drill Team is Kim Walker. Her duties include choreographing dance routines, arranging practice schedules, and working with the band director on routines. Kim has been a Rebelette for four years.

Oklahoma Beta, Oklahoma State

Mary Revell is vice president of the Student Union Activities Board this year. SUAB is responsible for the programs on campus, ranging from arts, films, recreation, and entertainment to

career development. Mary's responsibility is budgeting money for all SUAB programs.

Texas Gamma, Texas Tech

The scholarship committee of the College of Engineering chose Sylynda Gurley to receive the A.G. Oberg Scholarship, given by the department of chemical engineering. Sylynda received the \$300 award because of her achievement record as a freshman engineer.

New Mexico Beta, New Mexico State

There are five pairs of family sisters in the chapter. Jill and Mary Jo Archibeck, Laura and Julie Barr, Mary Cay and Rachel Boatright, Jill and Joyce Domina, and Jackie and Sheila Jones. Jill, Rachel, and Sheila were new pledges this fall.

Pennsylvania Gamma, Dickinson

Sue Leaycraft and Rena Ronson are new members of Phi Beta Kappa, and Omicron Delta Kappa recently initiated Karen Procopio, Rose Belza, and Rena Ronson. Lauren Roberts became a member of ODK last year.

Texas Zeta, Baylor

Two Pi Phis have received recognition for outstanding academic achievement. Luellen Jones was graduated magna cum laude in December, 1982, and Margaret Wilson, a November '83 graduate of the Baylor Law School, ranked #1 in her class.

Florida Beta, Florida State

Pi Phis and KAs celebrated the opening of the year with a "Champagne Jam." This is the annual social when Pi Phis are decked out in their most eye-catching "step'n out" costumes, while the KAs were handsomely arrayed in their ties and tails. There was dancing under the strobe lights to the music of the big bands, and the evening ended with the KA's sweetheart song, sung to Pam Worden, Kappa Alpha Rose.

Ohio Beta, Ohio State

Sororities returned to campus earlier this fall. Panhellenic Council moved rush back a week, before the start of classes, to overcome the conflict between the two. This was the first year that Ohio State has had rush before fall quarter began.

Indiana Epsilon, DePauw

Three peppy Pi Phis are on the football field supporting the Tigers this fall. Kim Whetzle and Susan Risk are cheerleaders and Paige Pace is on the Pompon squad.

Missouri Alpha, University of Missouri
Barb Morris is the epitome of campus involvement. She is one of the seven top activity leaders at this school of 25,000, having served as Alumni Association Student School Board president and Panhellenic external vice president and being initiated into academic and service honoraries Kappa Epsilon Alpha, Sigma Rho Sigma, and ODK. She is also Lambda Chi Alpha's 1983 Crescent Girl.

Indiana Epsilon, DePauw

At her initiation last February, Jennifer Vaughn was chosen not only the most outstanding pledge, but also earned the scholarship ring for having the highest GPA in her pledge class. Having one person receive both awards is quite unusual.

Texas Delta, T.C.U.

Last summer Lisa Mason, president, worked for Drug Recovery Adolescent Program in Arcadia, Okla. Lisa's days consisted of group and individual sessions and just hanging out with the kids.

Lisa is on Student Foundation at T.C.U., having been selected by the students and the administration.

North Carolina Beta, Duke

Several industries are interested in the research being done by Val Crofton. She's doing a series of taste and smell tests on a variety of products, to discover their effects on consumer taste. Val became involved with the experiment through the research she did for her honors thesis. She spent last spring semester studying brain characteristics of animals to help determine the evolution of the human mind. This led her to an offer for her current project.

Nevada Alpha, Univ. of Nevada

A Cooky-Shine, given by alumnae following a chapter meeting, was a special experience. It was an opportunity for everyone to get to know one another, and the new pledges received "alum mums" at that time.

California Eta, U.C. Irvine
The mother-daughter team Melanie Cahill and Patrice Whitten have brightened up the campus with their musical and acting capabilities. Melanie, a senior music major, has appeared in several productions for Sebastian's Dinner Playhouse. She has participated also in Songfest for two years and is Cal Eta's song chairman this year. Patrice keeps herself busy in the many productions presented by the UCI drama department.

Michelle Murrell, Joni Depew, and Jean Batman all appear in the Phi Delta Theta's "Women at UCI" calendar for the 1983-84 year.

Texas Epsilon, North Texas State
Cindy Winkler and Julie Woolems were Panhellenic rush counselors for the fall '83 rush. They were responsible for informing rushees on all sororities, as well as providing moral support during difficult times.

Alabama Gamma, Auburn
Margaret Wright won the design for the Panhellenic full rush handbook, and Martha Davies was in the top twenty for Miss Auburn.

West Virginia Alpha,
Univ. of W. Virginia
Pam Turner, a public relations major, worked for the Department of Defense in Washington, D.C. last summer.

Maryland Beta, Univ. of Maryland
Alison Crichton was a member of the cast in the campus musical production of *Hello Dolly*. Alison is a junior theatre major.

Kentucky Beta, University of Kentucky
Deanna Rankin has recently finished a photo session with *Modern Bride* magazine and will appear in the February/March issue of the national publication.

Texas Gamma, Texas Tech
Kris Dallas was awarded a \$200 scholarship by the Texas Tech art department for outstanding work entered in an art festival.

Iowa Beta, Simpson College
Marie Anderson, Deandrea Katko, Cindi Smithhart, and Dawn Weaver are five of the ten-member cheerleading squad. All are sophomores except Marie, a senior, who has been on the squad for three years.

Missouri Alpha, Univ. of Missouri
Elizabeth Tyndall not only exceeds academically, but in leadership as well. She is a Curator's Scholar, selected for a Chancellor's Leadership Class Scholarship, and a member of Phi Eta Sigma and Kappa Epsilon Alpha honoraries. In her spare time she helps others as a career instruction and placement specialist.

Texas Epsilon, North Texas State
Four angels are members of North Texas 40, a group chosen to assist the university in student relations, recruitment, university projects, and much more. Paula Pace, Nancy Thompson, Kristi VanKirk, and Kathy Kontor are the new members. All NT 40 activities are coordinated with the president and the Board of Regents.

California Gamma, U.S.C.
Six enthusiastic Pi Phis were Rush Counselors this year. Laurie Churchman, Aileen Hampton, Sally Jacobs, Kristin Josi, Stephanie Ranger, and Jenny Svet, Rush Counselor Coordinator, helped eager rushees through the long week of rush.

Drake dedicates archives

The Drake Archives for Greek Achievement (DAGA) was formally dedicated at a reception held in the Olmsted Center, Drake University, on July 9, 1983.

The archives, which centers around a nearly-complete collection of badges from Drake's fraternities and sororities dating back to 1891, took over two years to assemble. One thousand five hundred alumni were contacted in order to obtain contributions for the archives.

Special guest at the dedication ceremony was Maurice Littlefield, executive director of Sigma Nu Fraternity, Lexington, Virginia. Littlefield, whose fraternity was the first to be organized at Drake University, delivered a dedication address to the 100 alumni, faculty, administrators, and undergraduates in attendance.

The archives was the joint undertaking of Coordinator of Greek Life Sheree L. Clark and Drake alumnus Lynden Lyman. Campus fraternities and sororities contributed the proceeds of the 1982 Sweetheart Sing for the purchase of a display case to house the collection, which was designed by Doug Byers (Drake '81). Included in the display is a Pi Beta Phi badge in recognition of Drake's newest colony, organized last spring.

The archives is on permanent display in the Student Activities Office, Olmsted Center.



Lynden Lyman and Sheree Clark with the Drake Archives of Greek Achievement, the only university owned collection of its kind.

Campus congress is good law training

by KIM LOUTZENHISER

Ellen Levy, Missouri Beta, is Speaker of the Congress of the South Forty Washington University Residence Halls for the current school year. This legislative body works to enhance the social environment of the dorms. It also encourages academic excellence by providing a number of diverse services. Funds are derived from an activity fee included in each resident's housing charge.

This year the operational budget is \$106,000 and it is Ellen's goal to maximize the student's investment by maintaining an open door policy. Her position demands responsibility, leadership, experience, and efficiency.

The speaker is an elected member working closely with the vice speaker and treasurer. There are seven standing bilateral committees who work in conjunction with the Congress. Ellen is ex-officio on three, with each committee

consisting of half students and half administrators. She is one of eight students on student activities committee, working with members of the Board of Trustees. Debbie Berman, Panhellenic president and a Pi Phi, also serves on this committee. Ellen is a liaison to the Administration, Student Union, the media, and each resident.

Ellen transferred to Washington University her sophomore year and immediately became involved as a Congress delegate, a member of the public relations and constitution committees.

She also contributes to her Pi Phi chapter as suite manager and chairman of the alumnae relations committee. Her outstanding leadership and involvement should make her a prime candidate for law school, which is where she plans to go after graduation in 1985.

Nebraska celebrates "Fabulous Forties"

by MARY LOUISE GOODWIN
BOOKSTROM

Class reunions are always nostalgic, usually fun, and sometimes fabulous. When an entire decade of classes gathered in early June on the University of Nebraska, Lincoln, campus it was fabulous—"The Fabulous Forties Reunion."

Among the almost 2,000 returning to the campus for the festivities were 36 Nebraska Betas who had attended the university during the 1940s. It was four days crammed with activity as well as festivity. We lunched en masse on the astroturf football field at Memorial Stadium; dined with fellow classmates at the Student Union; toured town and campus; the jocks among us took part in the tennis or golf tournaments; we danced to the music of Jay McShane and to the big band sound of Woody Herman; some of us even managed to attend a lecture or two especially arranged for the occasion.

Before, after, and around all of this were cocktail parties, brunches, and mini-reunions which many of the Greek groups planned for their returning members.

The Pi Phi mini-reunion began with a luncheon and ended with a tour of the chapter house. A special guest at the luncheon was Dorothy Weaver Morgan, past Grand President of Pi Beta Phi, always a welcome addition to Nebraska Beta events. Another Pi Phi VIP on hand for the reunion was Marilyn Simpson Ford, Arrow editor, whom Nebraska Beta proudly claims.

After an afternoon (and several late night gab sessions) of "remember when" and "whatever happened to," it was unanimous that the 40s were indeed fabulous, as was the reunion.

Repertory theatre is summer love

Last summer Carla Capps, Idaho Alpha, was part of the Bigfork Summer Playhouse, a repertory theatre located on Flathead Lake in Big Fork, Montana. The company of twenty actors was chosen from 900 who auditioned last spring.

Four musical shows were performed during the summer. Carla played Charity Hope Valentine in "Sweet Charity," and was a member of the chorus for the other three shows, "Side by Side by Sondheim," "All-American," and "How Now Dow Jones."

The company was very busy preparing the four shows. They worked an eight hour day, performed in the evening, and presented each show each week on an alternating basis, Monday through Saturday. The first show opened June 18.

"I know now that theatre (acting) is what I need to do," said Carla. "My goal is to develop my talents to their full potential and be able to make a living doing what I love to do."



Carla Capps looked this way most of last summer—studying scripts and songs while wearing curlers.

CORRECTION

On page 15 of the Fall 1983 issue of The ARROW, captions on two pictures of award winners were inadvertently switched. The lower left hand picture is of Trish Peterson, North Dakota Alpha, accepting the award for best serious parody by a chapter. The bottom middle picture is Melanie Stevens, Pennsylvania Zeta, receiving the award for the winning entry in the original song category by chapters.



With campaign help from all the Pi Phis, two Mississippi Alphas were elected senators in the spring government elections at the University of Southern Mississippi. Amy Firmin, left, is a Business Administration Senator, and Jean Collette was elected an Education/Psychology Senator.

Pi Phi chairs S.M.U. activities for weekend

by AMY PIERCE

Dedication should be Mary Beth Flahavin's middle name. This Texas Beta is not only Pi Phi rush chairman, but was chairman of Parent's Weekend in October, sponsored by SMU Student Foundation.

Mary Beth was selected to be one of the 100 members of SMU Student Foundation from 350 applicants.

"SMU Student Foundation is the most prestigious organization on campus in that they sponsor popular, highly attended, school supported activities such as Parent's Weekend, Homecoming, Celebration of Lights (at Christmas), and Peruna's (SMU's mascot) Birthday," said Mary Beth.

She was honored to have been chosen one of the ten members on the Student Foundation Advisory to chair one of the events.

"Parent's Weekend is a chance for parents of SMU students to come and visit their children in their natural setting. It is an opportunity for us to provide for them various activities that are indicative of our fine university," she said.

This year's theme for Parent's Weekend was "SMU—Thanks for the Memories." Events included three talent shows, several dinners, and a brunch. Following the Dad's Club barbecue, buses were provided to the SMU—Baylor game. There was also a Mom's Club style show and reception.

Mary Beth says she has had her hands full spending two hours a day as both rush chairman for Texas Beta and Parent's Weekend chairman while she is carrying a full school load. But she says the support from her Pi Phi sisters and the enthusiasm from her Parent's Weekend committee gives her the strength to keep going.

HOLT HOUSE

Contributors' Honor Roll

The Holt House Committee wishes to thank all of the chapters, alumnae clubs and individuals for their support during the year ending May 31, 1983. In recognition of those who have contributed \$50.00 or more we honor the following:

\$2,500 and over: Champaign-Urbana, IL in honor of Beth Olwin Dawson, Charlotte Keck Johnson and Ruth Breen McBride.

\$250-\$600: Mississippi Alpha; St. Louis, Mo.

\$150-\$249: Alabama Gamma; Arizona Beta; Colorado Alpha; Georgia Alpha; Dallas, TX; Kansas City, MO-Shawnee Mission, KS; Oklahoma City, OK; San Antonio, TX.

\$100-\$149: California Epsilon; California Gamma; Indiana Gamma; Indiana Zeta; Michigan Alpha; Michigan Beta; Nebraska Beta in honor of Jean Nelson; Oklahoma Beta; Vermont Beta; Ft. Worth, TX; Hampton Roads, VA; Nashville, TN; North Shore, IL; San Jose, CA; Shreveport, LA; Wichita, KS; Pat and Bill James in memory of Barbara Hunt Moulton; Mr. and Mrs. Harold S. Hook in memory of Evelyn Holmes Salerno.

\$75-\$99: Texas Epsilon; Alton-Edwardsville, IL; Houston, TX; Indianapolis, IN; Santa Barbara, CA.

\$50-\$74: Alberta Alpha; California Beta; California Eta; Indiana Epsilon; Indiana Eta; New York Gamma; North Carolina Beta; Oregon Beta; South Carolina Alpha; South Carolina Beta; South Dakota Alpha; Texas Alpha; Texas Beta; Texas Delta; Washington Alpha; Ann Arbor, MI; Bloomington, IN; Cedar Rapids, IA; Charleston, WV; Cincinnati, OH; Columbus, OH; Contra Costa, CA; Dayton, OH; Denver, CO; Ft. Wayne, IN; Hinsdale, IL; Jefferson County, CO; Los Angeles, CA; Memphis, TN; Muncie, IN; North Shore Junior, IL; Oak Park-River Forest, IL; Omaha, NE; Peoria, IL; Quincy, IL; Richardson, TX; San Diego, CA; Toledo, OH; Tyler, TX; Washington, DC; Westchester County, NY; Yakima, WA.

O'Donnell is Truman scholar

The Harry S. Truman Scholarship is awarded annually to one college student in each state, and provides for the last two years of undergraduate work and the first two years of graduate study.

Kitty O'Donnell, Kentucky Alpha, was selected to apply, along with about fifty other students, at the University of Louisville. Initial requirements included a resumé and an essay on a public policy. Following an interview, Kitty was chosen to be one of two U. of L. semi-finalists for the scholarship. All nominees then were sent to Nashville, Tenn., for another interview.

The chapter and the Fraternity are proud to note that Kitty was selected the Truman Scholar for Kentucky. All Scholars were honored this fall during an awards banquet in Missouri.

Swimmer sets sights on 1984 Olympic team

by CAROLYN REEVES

Nancy Hogshead, North Carolina Beta, left Duke in the middle of her junior year to pursue what she had always done best, swimming. The time had come for her to make a decision—either she was going to train for the 1984 Olympics or she wasn't.

Nancy began swimming when she was seven years old. Her father had bought a boat and for safety purposes made sure she could swim a mile and a half to shore. He probably had no idea then that her swimming would become what it has today. At nine years old, Nancy had begun swimming year round. When she was eleven she began coaching with Randy Reese who set her thinking seriously about her goals, specifically, the Nationals. Nancy, indeed, made the Nationals when she was only twelve, the second youngest swimmer ever. The following year she made the 1976 Olympic trials and a year later made her first international trip to swim in Egypt and Greece. By the age of fourteen, in 1977, Nancy broke her first American record in butterfly. She was runner-up for the Highpoint Trophy. She also broke the long course two hundred meter record. Nancy had become the only American swimmer to be ranked number one in the world at that time.

The honor that has been most special to Nancy was the Nathan Mallison Award, received in 1978, which recognizes the all-round best athlete in Florida. This award, instituted eighteen years ago, has been awarded only three times.

Nancy's training was interrupted in 1979, when in a bicycling accident, she tore the tendons in her shoulder. She was only in the water about three weeks of the entire year, but that did not stop her. In 1980 she had her best year yet. That summer was her "most positive," she says. She enjoyed workouts. Everything was going right and she was swimming extremely well. She made the 1980 Olympic team in three events: the 200 m. IM (Individual Medley), 400 m. IM and the 200 m. butterfly. The excitement of making the Olympic team included getting to talk to President Reagan and former President Carter, who gave a speech to the athletes. The disappointment came, however, when the decision was announced for the American teams not to attend the 1980 Olympics in Russia.

Nancy went to Duke but did not continue swimming as seriously. She, for the first time, focused more of her energy and attention around her academic and social life. She said, "I needed the break from swimming. The thought never crossed my mind that in 1982 I'd make a comeback."

Nancy's swimming has obviously made her life out of the ordinary. She was only fifteen when she moved from her home in Jacksonville, Fla., to Gainesville, where she attended school while training. A recent trip home for six days was the longest stay she has had there since. Since 1976 her swimming has given her the opportunity to travel around the world to countries including Egypt, Greece, East and West Germany, Russia, Canada, Mexico, Taiwan, Israel, China, Hong Kong, France, and Holland.

Now, concentrating solely on swimming, her day is quite



Nancy Hogshead is headed towards 1984 Olympics.

unlike those as a student at Duke. She is up at six in the morning and runs 2.2 miles to the pool to work out for two hours. After a mid-day break to eat and sleep, she continues in the afternoon working with weights for an hour, then two more hours in the water. Her diet is a healthy one. She avoids sugar and white flour, eats lots of fresh fruit and vegetables, and drinks lots of milk.

Most recently, Nancy missed participating in the Pan Am games by just four tenths of a second in the 200 m. butterfly. But she felt positive about her performance, nonetheless. She said, "I feel that I swam up to my potential. I swam good, smart, strong races."

Nancy has now moved to Concord, Calif., to continue training for the 1984 Olympics. She will be swimming with a small club on a small team coached by Mitch Ivey, who has produced numerous world champions. With a record as impressive as Nancy's, she appears to be well on her way as one more of those world champions. The Pi Phis at Duke send her off with best wishes for luck and success.

Scholarships honor two

At Knox College's opening convocation, Illinois Beta-Delta Claire Baily was awarded the Faculty Scholarship Prize, given to a senior who has shown outstanding achievement in scholastic pursuits and in at least one extra-curricular activity during her junior year. Claire is a Bio-Chem major and maintains a 3.93 grade point average.

Also recognized at the convocation was Louise Brackman, honored with the Elbridge Pierce Prize. This award is given to a senior who has made the greatest scholastic improvement since the end of freshman year.

Both Claire and Louise were chosen from their class of 220 students.

Campus building named for famed photographer

by BARBARA NELLEN

Washington Alpha founder, Imogen Cunningham, was immortalized last May after a building on the University of Washington campus officially became Cunningham Hall.

A distinguished modern photographer, artist, and scientist, Imogen graduated from the university in 1907 with a B.S. in chemistry; her thesis dealt with the history and technical development of photography. She worked in a Seattle studio for two years, then received a scholarship for a year of study in Germany, where she did innovative research on the chemistry of printing papers.

Because her talents changed and developed parallel with technological improvements in the medium, her work is considered a record of the art of photography since the beginning of the 20th Century.

Cunningham was described as "birdlike" and was remembered for her "flaming red hair." She has been called "one of the saltiest, smartest, sagest characters in photography."

Cunningham remained active to the end, doing pushups in her 80s, and photographing and teaching until her death at 93 in 1976.

Cunningham's specialty was the portrait. She has been labeled "the mother of the realistic portrait that seeks not to flatter the face but to peer into the soul."

Ron Partridge, Imogen's son, said her major contribution was to free photography from imitating paintings. "She took photographs that were straight, non-pictorial. She was photographing tree roots and rocks without attempting to make them look like Turner or Rembrandt," Partridge said. Her favorite subjects have been people, and they have included leading artists, writers, dancers, actors, and political figures.

Forty-one of her prints are in the Library of Congress and one, "Marsh at Dawn," hangs in the International Museum of Photography, Rochester, N.Y. Her first one-woman show was at the Brooklyn Institute of Arts and Sciences in 1912. Seattle's Henry Art Gallery exhibited 100 prints by the celebrated Pi Phi this fall for the centennial of her birth.

Denied a Guggenheim fellowship at 81, she received one at 86. She was honored as a University of Washington Alumna Summa Laude Dignatus in 1974. This is the highest award bestowed upon an alumnus.

Cunningham Hall will house the Women's Information Center and the Northwest Center for Research on Women. Originally the historic building was built for the 1909 Alaska-Yukon Pacific Exposition.

As a farewell gift the Washington Alpha Class of 1983, presented the chapter with a framed Imogen Cunningham print last spring, which now graces the solarium walls.



Four Colorado Alphas appeared on the 1983 C.U. Gold Calendar. Erin MacArthur (top left) was the first, with skateboard in hand, in March. Mid-summer turned up Lisa Strieter (right) in her bare bikini, and the September return to school featured Lynn Foster (bottom left). Tammy Posner (above) was featured for the month of November.

Pi Phis Abroad . . .

. . . from DePauw

Five Indiana Epsilons are back in the fold after studying off campus last spring. Kristen Peregrine returned from Wroxton College, England; Laura Cochran and Erin Buck were at the University of Barcelona; Mary Hammond and Stacey Whittier spent a semester in Freiburg, Germany.

This semester Mary Lee Geoghegan, Sibley Smith, and Wendy Lund are studying in France; Melissa Hermann is spending the year in England; Margie Amoroso is at the University of Florence for her junior year; and Becky Ruhel is traveling throughout Europe on a DePauw program.

. . . from Duke

Three members of North Carolina Beta studied in England last spring. Cristy McClintock, Amy Hurite, and Jenny Kempe all agree that it was one of the best experiences of their lives.

. . . from Hillsdale College

Jolene Curreri spent the summer visiting and studying in Spain, her favorite foreign country. Beth Daugherty also spent time in Spain—her entire junior year. Judy Kleinschmidt, also Michigan Alpha, spent six weeks traveling through Europe on a planned tour with 42 other students from across the country. Crossing over the wall into East Berlin gave her a first look at communism and made her very proud and happy to be an American.

. . . from Kansas University

Betsy Stauffer is studying in Bordeaux, France, and Leslie Stevens is in Exeter, England, this year. Ann Lowry, studying at the Sorbonne last summer, intended to look for Amy Hollowell, a 1981 K.U. graduate who has a job with the International Herald Tribune in Paris. Imagine her surprise when Ann found herself living on the same floor of the same building—by chance—as Amy. Dru Meyers, on the same program as Ann, was also in the threesome.

. . . from Willamette University

Oregon Gammas Christine Miller and Suzanne Sanetel are spending 3½ months in Paris where they are living in the homes of local families. Both young women have French minors.

. . . from University of Colorado

Five Colorado Alphas spent their fall semester and/or spring semester in England and France. Cathy Brewer, Wendy Crist, Sue Lagasse, and Julie Smith lived with families in France, participating in everyday household activities as well as attending school. Laura Bergman was at Lancaster University where she spent time studying and exploring the English Lake District—and drinking tea!

. . . from University of Arizona

Arizona Beta Maryann Dawson and her mother, Cynthia Bumb, tripped to Europe in style last summer. They donned backpacks and spent a month traveling through France, Italy, and down through Yugoslavia. It was Cynthia's first trip to



Five Kansas Alphas are happy to be back home at K.U. after studying last summer in Europe. From left in front are Dru Myers, Lisa Monasee, and Angela Young. Back: Cece Winter, Ann Lowry.

Europe and she loved it. She also thinks that backpacking is the only way to go!

. . . from Michigan State

Michigan Gammas were a worldly bunch during their summer break. Karen Carboni studied in Spain and Kathy Daley studied in London. Sarah Smith explored England and France, while Mary Sofy, Patty Hart and Susie Sofy traveled throughout the Greek Isles.

. . . from Sophie Newcomb

Louisiana Alpha President Leigh Ann Blackwell, VP Moral Reece George, and Claudia Morozas are back in school after studying in Paris during the summer.



Oregon Gammas Brenda Phillips, left, and Beth Russi will be spending spring semester overseas. Brenda will spend two terms in Italy and Beth will be studying at the University of London.

. . . from Vanderbilt

Tennessee Betas were excited to see Stephanie and Frances Currey, Ellen Bair, and Elizabeth Traylor after they spent the summer studying in France and Spain. Betsy Dittman, Susan Agardy, Krista Halling, and Celia Irvine headed across the water and are spending the entire semester studying in France.

. . . from Syracuse University

New York Alphas Cynthia Casey and Ila Cooper studied in London last semester. Cindi is a Policy Studies major and traveled throughout Great Britain during her stay. Ila, a fashion design major, traveled to the fashion capitals of the world during her stay.

. . . from Ohio State

Susan Sugar is back home from a study tour in France. The tour included a seven-week study of art history. She received a 3.3 GPA and 15 hours credit for her experience.

. . . U.C. Irvine

Jill Stockstill and Juliet Codd enjoyed a little taste of Europe last summer. Jill attended summer school in France while Juliet enjoyed visiting relatives and friends. Nancy Fisher is attending school in Italy this year. She spent the summer in Switzerland working in a bank and brushing up on her Italian.



Afraid of falling? Perhaps not! Ann Christian, Florida Epsilon, takes no chances as she's 17,000 feet up in the Alps, one of her favorite spots. Ann visited 17 countries last summer and counted the Greek Islands and Austria as favorites also.

A scholarship established for Fairfield County, Conn., residents will make available a \$600 grant in 1984. The scholarship is being offered by the Panhellenic Association of Fairfield County. Applicants must be in their sophomore or junior year and be active members of a National Panhellenic Conference sorority.

For application forms and additional information, write: Mrs. Elizabeth Schaps, 65 Glenbrook Road, Stamford, Conn. 06902. Forms and information must be returned by March 15, 1984.



SMU Pi Phis who traveled abroad last school year and last summer are (l-r), Mary Landrum, Nancy Holland, Carolyn Ellison, Marsha Dea Davis, Lucy Morrison, Michelle Casselli, Kathy Gerritzen, Alice Phillips, and Kathy Moussa.



Iowa Beta's adventurous sister, Lynda Kate, spent an exciting summer of studying at the Goethe Institute in Prien, Germany. Lynda Kate is an art and German major at Simpson College.

Suckers sold for spirit

In anticipation of another victorious season, the California Thetas participated in the Davis Community Family Frolic.

The occasion was designed to raise morale and spirit in the town and team, as they kicked off the UCD Aggie football season.

Pi Phis sold suckers decorated with ribbons representing the school colors, and stamped with the motto, "stick it to 'em Ags." The Davis team is ranked #1 in Division II football and the Pi Phis are hoping to inspire the team to a national championship victory!

Convention is urged to follow founding principles

by TIMOTHY BURKE, *Pi Beta Phi Legal Counsel*

(The following speech, edited to space requirements, was presented during the national Convention in June.)

In April of 1867 when the Founders gathered in the Whitenack home near Monmouth College, we know they had as a goal the development of a national fraternity for women. It is difficult to imagine, however, that they envisioned a fraternity spread across the North American Continent with 115 chapters and 133,000 members.

When Clara and Emma Brownlee, Libby Brooke, Ada Bruen, Fannie Whitenack and the others gathered to create what became Pi Beta Phi I do not believe that they recognized that someday the Fraternity they began would own property worth tens of millions of dollars and have an annual cost for insurance of over \$100,000.

In 1910, when Emma Harper Turner convinced the national Convention of this body to launch a major philanthropy in what was then nothing at all of a town known as Gatlinburg, Tenn., I doubt that she could have envisioned that Arrowcraft would, in 1983, be one of the largest cottage industries in the country. She could not have imagined the development of Arrowmont and the creativity and wonderful artwork that goes on there.

Certainly in 116 years, Pi Beta Phi has grown incredibly. With it, the entire Greek system has grown healthy, wealthy, but unfortunately, not always wise.

Pi Beta Phi exists today as a private social organization. It also exists as a corporation. A legal entity that is in the eyes of the law a separate person. In fact, we are a conglomeration of corporations. Pi Beta Phi also exists in a larger society that is heavily regulated by government. Our chapters must respond to local zoning authorities and fire and health department inspectors. We are regulated by state law particularly in the area of workers' compensation, and of course, we are regulated by numerous federal entities not the least of which is the Internal Revenue Service.

As importantly, we must recognize that we live in an increasingly litigious society. Today, those who feel, rightly or wrongly, that their rights have been trampled on, do not hesitate to go to court.

Unfortunately, there are those units of Greek organizations which have refused to recognize the realities and obligations of the society in which they exist. There are those fraternities and chapters which have failed to live up to the obligations of law and their responsibilities to their own members.

Frequently these failures have resulted from innocent foolishness which brought only discredit, ridicule, embarrassment, or at the most some type of university sanction, to the organization. However, all too frequently what began as innocent foolishness has ended in tragedy, serious injury, and death.

In Columbus, Ohio, one local chapter of a national fraternity had a dance at a major downtown hotel. The chapter arranged in advance for an open bar and advised the hotel management that the bar was to be free until they had used up

\$1,000 worth of alcohol. An hour and half into the dance that amount was gone and the chapter advised the hotel to run up another tab of \$500. The drinks flowed all too freely to minors and adults alike and at the end of the evening, when one young man attempted to drive his date home, he was blind drunk. The accident that resulted badly injured the young lady costing her her voice and leaving her sadly disabled. The resulting lawsuit ended in a settlement divided equally between the hotel and the national fraternity which cost each of them an amount estimated to be in excess of \$100,000.

In the state of New York, a local fraternity with no national affiliation, called Clan Alpine, conducted an initiation ceremony that involved what must have been an incredible amount of alcohol. One prospective initiate died as a result of blood alcohol poisoning. The result was a \$64 million lawsuit brought against that fraternity.

Last year a fraternity had a party at a country club in Oklahoma. At that time the swimming area at the club was still under construction and there were signs posted prohibiting swimming. Yet after the party when most of the fraternity chaperones had left, one young man climbed onto the slide leading to the swimming area. Unbeknownst to him

"There is a growing recognition in the larger society that the abuse of alcohol has become all too frequent."

the swimming area contained only a few inches of water. The damages he received are summed up in the lawsuit filed on his behalf as follows:

"the muscles, ligaments, tendons, soft tissue, boney structures, nerve centers and blood vessels in Plaintiff's head, neck, back, shoulders, arms, hands, feet and legs were pulled, torn, strained, traumatized, lacerated, and their functions impaired and Plaintiff suffered a C-5 compression fracture and a C-6 tear drop fracture with resulting quadriplegia. As a result of said injuries, Plaintiff has and will lose income of up to \$2 million; has and will incur medical expense of up to \$5 million; has and will suffer pain of mind and body; will be permanently disabled, disfigured and his earning capacity reduced and has been damaged in the aggregate sum of \$15 million.

While we know not who, if anyone, the courts will ultimately hold liable for these injuries, the lawsuit is yet another example of the kinds of lawsuits which fraternities can face in conducting their social affairs, particularly where alcohol is involved.

As realistic individuals we all recognize that nothing we can do can guarantee that we will never be sued, for in today's society anyone can sue anyone else at any time for anything. We can, however, identify certain areas which have consistently caused serious problems for fraternal organizations.

Hazing is a ridiculous and unnecessary part of Greek life. The tragedies that have been caused by hazing are too numerous to mention. Suffice it to say that those individuals who engage in hazing which leads to physical or mental injuries can be held liable, for the harm they do.

While Pi Beta Phi carries an excellent package of insurance coverage, no insurance policy can protect an individual member from the harm she causes when she engages in illegal

acts. In addition, many states, and the number is growing every day, now consider hazing to be a criminal act. Thus the individual who engages in it may be liable not only at civil law for the damages he or she causes, but may be hauled into a criminal court, fined, even jailed, and left with a criminal record. In some states, as in Ohio, not only is physical hazing a crime, but mental hazing is equally illegal.

Frequently the problems of hazing have been compounded by the problems of alcohol.

Again, as realistic individuals, I think we recognize that alcohol is going to exist. Alcohol in itself is not a problem. It is the abuse of alcohol which is a problem.

There is a growing recognition in the larger society that the abuse of alcohol has become all too frequent. Equally, it is now recognized by most state laws and to a large extent by the general public, that our court systems have been far too lenient in dealing with the illegal and improper use of alcohol. As a result, many states are rapidly restricting the ability of young people to legally purchase, obtain and/or consume alcoholic beverages.

Our chapters and alumnae clubs should recognize that to serve alcoholic beverages to a minor is a criminal act. Again, those members who choose to ignore age laws regarding the consumption of alcoholic beverages run the risk of finding themselves in criminal court, and obviously there is no insurance coverage for that.

Additionally, in many states, dram shop laws continue to exist. These laws provide that the individual who knowingly chooses to serve liquor to an individual who is already intoxicated may be held liable for the injuries later received by that individual or for any injuries he or she may cause to others.

Our members should also keep in mind that in many states the penalties for driving under the influence, or driving while intoxicated, have been stiffened enormously in recent years. Now, it is frequently the case that a court has no choice but to sentence the convicted drunken driver to a jail term of some sort. In Ohio it is now virtually automatic that an individual convicted of drunk driving will receive a 3-day jail sentence.

A word to our actives. The crimes of hazing, serving liquor to a minor, or drunk driving, may not seem all that serious to you. But consider the impact that it may have on your future. Should you desire to become a lawyer, for example, when you are in your third year of law school and the local bar association is making a decision on whether or not you qualify for entrance into the legal profession, even if it is "only" hazing or serving a minor which is on your record, you may find your entry into the legal profession barred for reasons of moral turpitude. When it comes to regulating the internal affairs of our organization, or disciplining, as our Grand President put it, "the angel who flies too close to the ground," you must first understand and follow your own rules. Normally, the courts will not interfere in the internal affairs of a private organization. However, should a chapter violate its own procedure or the procedures mandated by the constitution and statutes and policies and standing rules of the Fraternity, a court is very likely to step in.

When it comes to establishing rules, it is important for each of the rule making bodies to keep in mind three basic points. First, whatever rules you adopt must be clear and unambiguous. They must say what you mean them to say so that the directives can be adequately and clearly understood by those to whom they apply. Second, the rules must be communicated to

the members. It is not enough simply for one of our executive bodies to adopt a rule and then allow it to remain only in the secretary's notes. Thirdly, for our rules to be proper they must be related to the purpose for which we exist.

Should it become necessary to institute disciplinary proceedings against one of our members, whether it is suspension, dismissal or expulsion, there are three additional items to keep in mind. First of all, the individual against whom the disciplinary proceedings have been brought is entitled to notice of those proceedings. She should be notified in advance, and in writing, of the date and time on which the disciplinary proceeding is to take place and of the charges which are being brought against her. Secondly, she must be given the opportunity for a hearing, must be permitted to attend the

"Hazing is a ridiculous and unnecessary part of Greek life."

hearing, to hear the witnesses against her, and to present her own evidence and witnesses. Lastly and perhaps most importantly, she must receive fair consideration. Whether it is the chapter as a whole which is conducting the disciplinary proceedings, or a hearing officer or a hearing panel, the consideration received by the individual subject to a disciplinary proceeding must be fair. If it is the chapter president, for example, who has initiated charges against the members, that chapter president has no business sitting as the judge. She has already made up her mind and cannot fairly consider evidence to the contrary.

We should recognize too that in disciplining our members, or in regulating our relationships with our members, they have a right to privacy. In virtually every state, the vast majority of our members are legal adults for all purposes, except perhaps for drinking. As a result, they have the same rights of privacy as any other adult. When it becomes necessary to conduct disciplinary proceedings, we must remember that those proceedings are a private matter. The contents of those proceedings should not be discussed outside the confines of the proceedings. They are no one else's business but the individual involved and the Fraternity. In the vast majority of instances that means that it is not even the business of the parents of the member against whom disciplinary charges are brought.

Even in dealing with the difficult problem of in-house chapter theft the right to privacy must be respected. The fact that a member of AAC or a house corporation, or a chapter officer believes that a particular individual may be involved in theft, or even believes that she has the stolen property in her room, does not give any of our officers the right to search that individual's belongings. It is true that a landlord has the right to inspect, at reasonable times, the premises, to insure that it is safe and properly maintained. However, that right does not carry with it the ability to open an individual's drawers, to empty out her purse, or to inspect her diary.

We must also recognize that we exist in a society subject to governmental regulations. Obviously, the governmental agency with whom we deal most frequently is the Internal Revenue Service. The responsibility of the Fraternity as a whole, our chapters, house corporations, and alumnae clubs, to satisfy the requirements of the Internal Revenue Code is a

responsibility which we owe to ourselves and to society at large. The failure to comply properly with IRS law may jeopardize both the wealth and health of our Fraternity.

For many years the Internal Revenue almost totally ignored fraternities and other non-profit organizations. Such is not the case today. The IRS is closely regulating fraternities. It is not unusual for them to audit a national organization or its chapters or house corporations.

When a problem develops in one of these areas, before it reaches crisis proportions it is important that you seek timely help. Most often these are local problems which should be handled at a local level. It may mean that a chapter, a house corporation, or an alumnae club will have to retain local counsel to assist them. You should not be afraid to do that.

In certain instances we do request that national be advised. If one of our chapters, house corporations or alumnae clubs is audited by the IRS we need to know about it at a national level. So too, if one of our units is investigated by the Wage and Hour Division of the United States Department of Labor we need to know about it at a national level. If a civil rights investigation is being conducted, be it by the Equal Employment Opportunity Commission, the United States Department of Education, a state agency, or just the college administration, national needs to be advised. If a major police contact or investigation involves one of our houses or local units, national needs to know about it. And if the worst happens and tragedy does strike at one of our houses and serious injury or death results, again national must be notified immediately. Under normal circumstances, contact with national legal counsel should come through Grand Council.

It is not my intention to frighten our members by emphasizing the negative aspects of the responsibility imposed

"Our chapters and alumnae clubs should recognize that to serve alcoholic beverages to a minor is a criminal act."

upon you. Rather, I simply want you to understand the reality in which we exist. Many of these responsibilities may be imposed upon us by law and society, but all of them are wholly consistent with the purposes for which Pi Beta Phi was formed.

If you remember the purpose and heritage of Pi Beta Phi and are guided by that in the conduct of your affairs you will be far better off. The Founders wrote in the original constitution of I.C. Sorosis:

"The object . . . shall be the advancement in the most delicate but strong friendship; . . . mental assistance in all matters, . . . to enable any member to follow the dictates of her own conscience knowing that she will be upheld and encouraged in independence."

Those same motives should guide us now. Keeping that in mind, it is far easier to put in proper perspective our obligations to our members, and the Fraternity.

Keep in mind the principles upon which Pi Beta Phi was founded, exercise common sense, be guided by the highest traditions of Judeo-Christian ethics, and seek, when necessary, timely professional advice. If you do that, in the long run you will be all right and Pi Beta Phi will continue to soar like an arrow to heights of glory not even yet envisioned.

Jan is honored in Phoenix

by PAT RAILEY

Jan Threlkeld Moore, Arizona Alpha, featured in the Summer 1983 ARROW, has been chosen by Phoenix, Ariz., City Panhellenic for their Woman of the Year Award. Nominated by both the Phoenix Alumnae Club of Pi Beta Phi, of which she is a member, and the Camelback Alumnae Club, Jan was given this award in competition with 1,575 other active alumnae members of Phoenix Panhellenic.

Although Jan has supported Panhellenic by working at their local fund raiser for many years and has served as a club representative to Panhellenic, the award is based primarily on her dedication and service to Pi Phi at the national, local, and collegiate levels and her service to her community and church.

Jan has just completed serving as chairman of the annual Pi Phi Benefit Fashion Show, held in early November.



Pat Ward Vranicar, California Zeta, left, is proud of having four Pi Phis in one family. Tracy, next to her mother, is the newest Pi Phi, joining her sisters Jill and Sally. Tracy attends U.C. Santa Barbara and her two sisters are San Diego graduates.

Trustees choose Carla

In September Carla Panzitta, Pennsylvania Eta, was appointed to serve on the Board of Trustees of Lafayette College. Carla, along with several other qualified students, was recommended to the Board by Lafayette's Student Government and was chosen to be a full voting member.

Carla is on the Financial Policy Committee, the first student to hold such an important position.

Gail Karn is Fulbright recipient

Gail Whitney Karn, Ohio Zeta, has been named recipient of a Fulbright Scholarship for the study term September to June. The grant is being used to do a study of Italian market places, and the purpose will be to document and observe with the hope of gathering information that is applicable in this country.

Gail was graduated from Miami University in 1974 and earned the Pi Beta Phi Fellowship in 1977. She was graduated from Harvard in 1978, and has since done commercial retail

architecture in Boston, and has worked for the city of Boston on storefront design.

Both Gail and her husband are architects now practicing in San Francisco. She has done design work for a commercial center in Saudi Arabia and has been employed by MBT Associates in San Francisco. She has been active in the San Francisco Alumnae Club, most recently serving as corresponding secretary.

Gail is based in Rome and affiliated with the University of Rome.



Gail Whitney Karn



"Spring Sweep" committee members are ready for customers in front of the Juliette Fowler Homes, Inc., the day of the sale. L-r: Patty Kier, Alice Fant, Becky Harmon, Syndi Johnston, Laura Doramus, and Laura Lyon.

Dallas Juniors find rummage sells!

The Dallas Junior Night Alumnae Groups' first fund raising endeavor was a big success! What started out as an idea to have an average garage sale in a member's garage turned into the "Spring Sweep" Rummage Sale which was held at the Juliette Fowler Homes, Inc., a beneficiary of the proceeds from the sale.

The fund raising committee began meeting in October to lay their plans for the sale. The committee members were Laura Laker Doramus and Alice Waggoner Fant, co-chairmen, Becky Harmon, Syndi Johnston, Patty Kier, and Laura Graves Lyon. These six committee members solicited members of their own alumnae group as well as members of the Dallas Junior Day Alumnae Group and Dallas Senior Day Alumnae Group for any items that they were planning to throw away during "spring cleaning." When this project

started, the committee members didn't know whether to expect to gather \$100 worth of goods or \$1,000 worth of goods. Much to their pleasant surprise, by the date of the sale *many* members had contributed *many* items!

On Saturday, April 30, shoppers started lining up outside of the Juliette Fowler Homes, Inc. as early as 8:30 a.m.! The doors opened at 10:00 a.m. and closed at a little before 6:00 p.m. After selling items from a "letter licker" to a rhinoceros plant stand to hiking boots to designer dresses, the group had raised \$1,032.96!

Half of the proceeds from the "Spring Sweep" went to the Children, Youth and Family Services program of the Juliette Fowler Homes, Inc. The other half of the money went to the Pi Beta Phi Junior Night Scholarship Fund.

Jackie stays here; loves those Pi Phis

Jacqueline Rinas, an Indiana Gamma pledge and a Butler freshman from Stade, West Germany, exemplifies the diversity and varying backgrounds of Pi Beta Phi.

A journalism major, Jacqueline visited colleges last fall while living in the United States as part of an exchange program called Youth for Understanding. After enjoying her year in Montezuma, Ind., with host parents, and seeing how much Butler University could offer, she made the decision to stay in the United States for college instead of returning to her home near Hamburg.

Jackie speaks English fluently after taking it in high school for four years. She enjoys the United States, and finds the people open and easy to talk with. Although college in Germany is free to qualified students, Jackie considers the higher education system here better because "there are no extracurricular activities in Germany; it is strictly academic."

Social and emotional development is stressed less in Germany than here in America, and Jackie feels that college and sorority life here benefits her to the fullest. Her parents and younger brother have never visited the United States, and had no idea of what a sorority was, or what it represented. Jackie happily feels that Pi Phi represents what she likes most of the United States, emotional, social and academic enrichment.

Kyle Angel Award Province Winners

NOT PICTURED
Mildred Moyer O'Donnell
Buffalo, NY A.C.
Beta Province

NOT PICTURED
Edith Stanley Marshall
Ann Arbor, MI A.C.
Eta Province



Sheila Pearson Luddy
Hartford, CT A.C.
Alpha Province



Betty McCormick Ackley
Central Pennsylvania A.C.
Gamma Province



Barbara Borrer Warden
Northern Virginia A.C.
Delta Province



Marion Newell Dassie
Greenville, SC A.C.
Epsilon Province



Jean Fargason Gordon
Tuscaloosa, AL A.C.
Zeta North Province



Dorothy Wilbur Duncan
Brevard Co., FL A.C.
Zeta South Province



Patricia Andrews Cole
Indianapolis S. Suburban
Theta Province



Martha L. Nelson
Akron, OH A.C.
Iota Province



Nancy Wilkerson Diehl
Nashville, TN A.C.
Kappa Province



Sarah Cook Green
Memphis, TN A.C.
Lambda Province



Janet Mardaga Higgins
Milton Twp., IL A.C.
Mu North Province



Beth Olwin Dawson
Champaign-Urbana, IL
Mu South Province



Matilda Maris Severson
Grand Forks, ND A.C.
Nu Province



Pearl Fitzgerald Sears
Omaha, NE A.C.
Xi Province



Terease Edwards Hampton
Ponca City, OK A.C.
Omicron Province



Gail Elliot Anderson
Houston, TX A.C.
Pi East Province



Marilyn Hammer Meechan
Yakima, WA A.C.
Sigma Province



Wardine Jesseph Fenton
Wenatchee, WA A.C.
Tau Province



Geraldine DeBenedetti
Honolulu, HI A.C.
Upsilon Province



Louise Durgan Hammons
Whittier Area, CA A.C.
Phi West Province



Sayre Webster Lawrence
Tucson, AZ A.C.
Phi East Province

Oklahoma Beta documents chapter's 70-year history

Nearly 300 Pi Beta Phi collegians and alumnae were treated last spring to a film documenting the 70-year history of their Oklahoma State University chapter.

"Pi-Phidelity" was created by Annette Soloman, an Oklahoma Beta English major. Annette spent a year researching chapter history and a second year interviewing and producing the still picture documentary.

Idea for the film was prompted by Soloman's attendance at a Universal Studios summer cinema workshop in 1981. "I learned how to make a still-picture film, and I thought it might be a nice way to preserve chapter history," Soloman said.

Soloman contacted Judi Donaldson Baker, Stillwater Pi Phi alumna, and asked if the alumnae club would fund "a little project like that."

"I told her it would probably take about two weeks," Soloman said. "She thought it was a great idea, so I started going through our chapter archives, and was overwhelmed. I called back and told her it might take more like a month."

Annette spent the next year at video-technical school in Dallas, researching chapter archives and histories. She and Judi also publicized the project, soliciting funds from seven different alumnae clubs and several private donors.

In April, 1982 Soloman returned to Oklahoma and set her completion deadline for the chapter's 1983 Founders' Day.

By then she had an outline and a title. She came up with the name while wiring an amplifier in electronics class. "The film was on my mind all that time. I was sitting there doodling 'fidelity' with a 'ph' and it hit me.

"The name 'Pi-Phidelity' was really popular with the alums who helped keep me excited about the project."

That summer Annette began producing the film and interviewing former members. She interviewed 50 alumnae from Oklahoma and Texas and edited hundreds of pictures she had collected or received from alumnae.

The result is a 40-minute, \$2,000-budget film detailing the history of Pi Phi's Oklahoma Beta Chapter.

The film begins in 1912, before greek letter societies were allowed on campus, and women's clubs were named the Night Owls, the Afternoon Teas, and the Kat Klub. It documents the lifting of the greek letter ban in 1915, and the rivalry to see which society could gain national affiliation first. The film gives equal attention to every era up to the present, and is narrated by taped interviews with alumnae.

"It really is a historical documentary," Soloman said. "It covers four wars and a depression. It gives history on local chapters, campus history, greek system history, and social and economic changes over the past 70 years. There are lots of surprises.

"For one thing, it's amazing how little some things have changed. It's really interesting to hear ladies from the class of 1923 talking about sneaking out to fraternity houses at 3 a.m. after 10 p.m. curfew.

"Another fascinating thing is the cycles the film goes through. The early '20s were very strict. The late '20s had the Charleston, golden girls, and lots of girls smoking for the first time.

"The '40s were straight again, with sweaters, pearls, midi-skirts, then the post-war era was like a big playground that turned into the radical '60s. When we finally got out of that era alive, we went conservative again in the '70s."

Soloman said OSU's early greek houses are ideal subjects for historical production.

"We're old enough to have a history but young enough that it's timely and relevant," she said. "For example, I could actually interview seven of our charter members."

One of those members and two from the first Pi Phi pledge class were among the 170 alumnae who saw the film at the Founders' Day banquet. "It was the biggest get together we've had in the past 20 years—possibly ever," Soloman said. "Every era in the film was represented."

Gail Echols Monnot, a 1963 graduate and Stillwater resident, said the first guests she met at the banquet were two friends from California and one from Chicago.

"It was amazing to see people who had come so far for the event," Gail said. "I was seeing people I hadn't talked to since graduation. After 20 years you just don't expect that.

"When I heard about the film I expected a little slide show. But when Annette interviewed me I realized that it was really something professional."

Monnot said she thought the film was "beautifully done."

"It made you want to see more," she said. "Of course it brought back memories, but it also showed how important alumnae strength is to the house and how that strength has carried through the years."

Active Stacy Kamas said, "A film like that makes you appreciate the hard work that went into building the sorority. It was a real renewal for the whole house."

"The subject matter is most relevant just to our chapter," Soloman said. "It's a film to praise our accomplishments. But the concept is one that could be used by other chapters.

"It would be difficult to find someone else with the interest and the technical know-how and the time. In our case all the elements happened to be in the right place."

Soloman said the film has been personally rewarding in several ways.

"I learned more technically from producing this than I could have in any class. It was also an experience interviewing the older alums, giving them a chance to relive their college days."

Annette will use the information next year in greek history lectures to fraternities and sororities. After graduation she plans to work with films for children. She currently has no plans to produce another historical documentary.

"I'm just relieved to complete this one," she said. "It was a one-time project.

"But then again, who knows?"



Through Chapter Service Projects

PI BETA PHI PHILANTHROPIES benefited from a number of special money raising projects last spring and fall. INDIANA ETAS earned \$260 by assisting a local clothing store in Ft. Wayne take inventory.

MISSOURI ALPHA held a "Real Man" contest at the University of Missouri and contributed over \$1,600 to Arrowmont.

MICHIGAN ALPHA held a dance marathon to raise money for Pi Phi philanthropies. The Hillsdale chapter danced from 7:00 p.m. on a Saturday night till 7:00 a.m. the next day—and then fell into bed!

ONTARIO ALPHA organized a Cookie-Gram Service. They baked, decorated, and delivered special cookies for fraternities and residences on the University of Toronto campus, sharing something "lovin' from the oven."

NEW YORK DELTAS had a spring Carnation Sale in April, delivering individual carnations, with a personal message, for \$1.00 each. They earned \$800, with \$400 going to

Arrowmont, and \$400 to Hospiscare, an organization which assists terminally ill patients and their families.

Jan Wysocki and her Alpha Gamma Rho partner, Don Alexander, danced 32 hours in Cornell's Dance-A-Thon for Muscular Dystrophy.

The chapter also assisted ATO in their annual fall Daffodil sale benefiting the American Cancer Association.

During Greek Week at the University of Maryland, MARYLAND BETA teamed with SAE to sponsor a "Pie in the Eye" service. For \$1.00, a buyer obtained a whipped cream pie and someone to deliver it to the victim. All profits went to charity.

MICHIGAN GAMMA initiated a new fund raiser for the Easter Seals Foundation last spring. The Michigan State Pi Phis teamed with Phi Delta Theta to collect returnable cans and bottles from fraternities, dorms, sororities, and local neighborhoods.

Last Easter the patients at Conva-Rest Nursing Home, MISSISSIPPI ALPHA'S local philanthropy, were in for a treat when Pi Phi angels brightened their day with an Easter parade. Each Pi Phi, along with a patient, made an Easter hat to wear. The afternoon was filled with laughter and fun when the patients had a parade, marching around the home to show off their hats. 1st, 2nd, and 3rd prizes were given.

\$6,238 was raised during the 1983 Dance-A-Thon for Muscular Dystrophy at Clemson. SOUTH CAROLINA BETA Kathleen McGee and David Lockwood represented Pi Phi and danced for 20 hours.

IOWA GAMMA and Iowa State's Phi Kappa Theta fraternity held a highly successful fund raiser this fall. The Blitz raised over \$3,000, with 75 percent going to the Variety Club of Iowa.

INDIANA ETAS drove carts, kept score, and generally helped out during the third annual golf tournament for the Society for Crippled Children and Adults. After the tourney was over, the IPUFW Pi Phis sold raffle tickets to raise more money.

ARKANSAS ALPHA received an award from the Panhellenic Council at the University of Arkansas last spring for its community service involvement. They are working this year to keep up that involvement and are active in the Red

Arizona Betas, their coaches, and "teammates" from the Boys Ranch just wait for their turn during the Arizona State Phi Psi 500.



Kris Druding, Indiana Zeta, is the 1983 Bike-A-Thon Queen at Ball State. The Bike-A-Thon is Lambda Chi's philanthropic project. Kris is a senior majoring in audiology and is chapter V.P. Social.





New York Alphas Wendy Levine, Kim Creason, and Mona Lopez participated in the balloon sale with Lambda Chi Alpha for the Muscular Dystrophy Association during the dance marathon held at Syracuse University.

Cross Blood Drive and the March of Dimes telethon, continued working with the Children's Home and are planning a big supper to continue support for Arrowmont.

Last March MICHIGAN ALPHA held a fair in the Hillsdale area and raised over \$900 for the second graders at Gier Elementary School.

ALABAMA GAMMA and Auburn's Kappa Alpha Order jointly hosted an ice cream party for Project Uplift children.

KENTUCKY BETA periodically collects door-to-door for its local philanthropy, the Citizens Child Abuse Center. On the last outing, over \$1,000 was raised in two hours, enabling the Center to keep its doors open. The chapter also participated with the University of Kentucky's Kappa Sig chapter to sponsor their annual Road Rally, also benefiting the center.

Pi Phis at North Texas State took 20 small children on a tour of the NTSU museum and other fun sites around campus and ended with ice cream treats for everyone. This was part of TEXAS EPSILON'S work with the Big Brothers and Sisters of Denton.

TENNESSEE ALPHA held its fifth annual All Swing Tournament last spring as a fund raiser for the American Cancer Society. Teams, using the oversize pumpkin ball, represented the majority of fraternities at the University of Tennessee/Chattanooga, as well as independents on campus.

KENTUCKY GAMMA participated in the Eastern Kentucky Panhellenic Leukemia Drive and received an extra reward. They went out on a chilly day and cleaned up the Richmond area, as well as soliciting donations from local people, and won first place for having the most volunteers and more sponsors than any other Greeks on campus.

Three PENNSYLVANIA BETAS, Linda Davidson, Judy Olson, and Sandy Poindexter, participated in this year's Swim For Cancer at Bucknell.

ARIZONA BETA helped the Arizona State Phi Psis raise \$2,100 for the Arizona Boys Ranch and Sunshine Acres, two local homes for underprivileged boys. The event was the Phi Psi 500.

Five PENNSYLVANIA EPSILONS participated in Sigma Delta Tau's annual Fraternity Feud at Penn State, to raise money for the Heart Association.

At Illinois State, ILLINOIS IOTA held their first Pi Phi Plunge and raised over \$500 for the Heart Association.

Oklahoma City club honors Patti Leeman



A very special Pi Phi, Patti Patton Leeman, was honored last May by the Oklahoma City Senior Alumnae Club with a \$500 donation in her name to OMNIPLEX, the Arts and Science Museum of Oklahoma City.

Patti's service to OMNIPLEX began ten years ago as a volunteer. She also served as the first president of Omniplex, the museum's volunteer organization and the vice president and president of the OMNIPLEX Board of Trustees. She now edits the museum's newsletter, *OMNIGRAM*. In March, Patti was the recipient of the Museum's Trustees' Award, given for outstanding service.

Patti has served the community through the years in a variety of ways ranging from active involvement with Oklahoma City University, Junior League, Westminster Presbyterian Church, United Appeal, and the Oklahoma City Symphony. She is a free lance writer, editor, and researcher, has taught in the public school system, and is a Phi Beta Kappa.

As an active Oklahoma Alpha Pi Phi, Patti served the chapter as president, and also served in that capacity for the Oklahoma City Senior Club. Patti's daughter, Valerie Brett, was named Upsilon Province ABO winner while at California Alpha last year.

Volunteering leads way into business opportunities

To Ellen Robinson Rolfes, Tennessee Delta (Memphis State), volunteer work is serious business—serious enough to lead her and her partner, Helen Hays, into joint ventures in three separate but related companies. They were merely acquaintances in 1976 when the volunteer system in the Junior League of Memphis placed them together as consecutive chairmen of the organization's nationally marketed cookbooks. Little did they know at that time that fate would take a hand and lead them into a venture which has placed them in all parts of the United States. The two women had a lot in common. Through volunteer work they discovered a love of business, a love of finding a void then filling it, and a love of people—people from everywhere.

Together they began a partnership called Hays, Rolfes & Associates, the only consulting firm in the country that specializes in community cookbooks published by non-profit organizations. Their Community Cookbook Seminars have enjoyed participants from all parts of the country and they have a national reputation within the cookbook world, having provided training in such places as Boston, Atlanta, New Orleans, New York City, and Dallas.

Recently they discovered another void—a need for their workshops to be tailored for individuals interested in self-publishing a cookbook for the national market. That was the birth of



Ellen Rolfes, cookbook expert

the Cookbook Seminar for Self-Publishers, successfully held in Memphis and San Francisco thus far.

"My first real volunteer work was probably through Pi Phi," writes Ellen. "My first exposure to a national organization was when I was Tennessee Delta's delegate to the centennial Convention when we went to Monmouth from Chicago. Pi Phi gave me very much, and now my real business is dealing with volunteer groups. What great training during the college years!"

In the last year, the two women have gone into another venture to fill another

national void they discovered. With a third partner, they created *THE COLLECTION: Classic Community Cookbooks*, a distributorship wholesaling self-published cookbooks to bookstores and gift shops across the country. They warehouse 135 titles and ship to all points in the United States. They also have acquired ownership in a printing company called Kansas City Press, created by them and two brothers to provide quality cookbook production. The women sit on the board of directors and monitor company policy and customer relations.

"I am the mother of two daughters, with a wonderfully supportive husband who makes it all possible," says Helen. "My life is truly filled with carpools, etc., but I feel so blessed to have the cookbook world that I can slip away into whenever the wind calls."

Republicans name Kettlewell to post

A former executive director of the Texas Republican County Chairman's Association has been named the director of political operations for the Republican National Committee.

Linden Heck Kettlewell, Texas Gamma, was the Texas association's executive director in 1978, and has been counselor to the RNC since last February. She now serves as supervisor of all political activities conducted by the RNC.

Linden's grassroots experience, in addition to the above, includes: executive director, Nevada State Republican Central Committee (1979-1980); special projects director, Republican Party of Texas (1977); and state advocate scheduler for the President Ford Committee in Texas (1976).

Linden is eligible to practice law in both Texas and Nevada; holds a Doctor of Jurisprudence degree from the University of Texas School of Law; and is a member of the American Bar Association. She lives in McLean, Va., with her husband, Larry.



Need a recipe? These are just a few of the cookbooks that have the Rolfes touch in one way or another. The concept of a cookbook now can be taken through its various stages of development, then to manufacturing, and the final stage of national distribution.

Six Cal Alphas summer in D.C.

by MADELINE KIRBACH



Thirteen members of the 1943 pledge class of Ohio Beta held a 40th reunion of their pledging last July in Columbus. Enjoying the weekend were (back, l-r): Marcia Coney Hosier, Elaine Judy Hopkins, Normecutt Miller. Middle: Ann Williams Brown, Martha Moore Kohr, Betty Bull Wiseman, Patsy Conaway Ruddell. Front: Jane Guthrie Grant, Ruth Gladden Brown, Gloria Fuller Walker, Patti Bazler Fowler, Carol Annis Sims. Not pictured: Nancy Thruston Putnam.

UNICEF intern a first in Chicago

Christine Corrigan, New York Alpha, recently completed an internship at the Midwest Regional Office of UNICEF (the United Nations Children's Fund) in Chicago. The Syracuse University senior, who is a dual major in international relations and broadcast journalism, created the internship position herself and is the first to do so in the Chicago office. Her duties included coordinating UNICEF's Campus Action Program in midwestern colleges and universities, as well as volunteer development work.

While working there, Christine met UNICEF's Special Envoy, Prince Talal bin Abdul Aziz of Saudi Arabia. She

also helped plan a benefit which headlined internationally known entertainer Victor Borge.

During the school year Christine works with the Central New York Committee for UNICEF in Syracuse as an honorary member of the Board of the United Nations Association of Central New York. A past philanthropies chairman and secretary at New York Alpha, Christine says her Pi Phi experience has certainly benefited her work at UNICEF. Christine, who speaks both German and Mandarin Chinese, hopes to work for the United Nations or the U. S. State Department upon graduation.

Despite what they say about politics being dirty business, Washington, D.C., was full of angels last summer, including six California Alphas from Stanford serving as interns.

All working up on Capitol Hill, Sheri Gould, Sheila Hennessey, and Leslie Hecht lived together at Georgetown University with Karen Kochevar in an apartment nearby. Sheri worked in the office of Congressman Ed Tschau. Sheila, an earth sciences major, followed those issues for her senator from Idaho. Leslie, whose father is a senator from Nevada, worked with her sister in the White House public affairs office. As an intern for Minnesota Senator Ernie Boshwitz, Karen also rubbed elbows with Washington's big-wigs.

Senior Madeline Kirbach interned at *Foreign Policy* magazine. She worked in the editorial department, fact-checking articles for the fall issue.

Hillary Earnest is still in Washington. After graduation in June, Hillary started her year-long term working as a legislative correspondent for Senator Armstrong of Colorado. Hillary plans to serve in the capital until next summer when she will begin preparations for law school in the fall of '84.

All six California Alphas agree that a summer in Washington, D.C., is not only a terrific learning experience, but a whole lot of fun, too! Quite a capital idea!



Four Illinois Alpha Pi Phis were nominated to be Winbigler Calendar Girls at Monmouth. From left: Paige Pangborn, Kim Walters, Laura Martin, and Lisa Freiden.

Province ABO Winners



Pam Stevens
University Vermont
Alpha Province



Lynn Paul
St. Lawrence
Beta Province



Diane Tangalos
Washington & Jefferson
Gamma Province



Kelly Bail
West Virginia Univ.
Delta Province



Leigh Ann Skelton
Clemson
Epsilon Province



Patty Kinch
Florida State
Zeta Province



Karen Boll
Hillsdale College
Eta Province



Anna Marie Jain
Purdue
Theta Province



Patsy Hewes
Ohio State
Iota Province



Susan Droppleman
University Tennessee
Kappa Province



Shawne Lucius
Louisiana State
Lambda Province



Laurie DiGirolamo
Bradley
Mu Province



Bridget O'Keefe
University Minnesota
Nu Province



Martha Hughey
University Nebraska
Xi Province



Susan Lane
University Oklahoma
Omicron Province



Lanette Kelly
University Wyoming
Rho Province



Mona Heupel
Montana State
Sigma Province



Carla Swanson
University Washington
Tau Province



Victoria Van Maren
U.C. Davis
Upsilon Province

NOT PICTURED
Karen Derr
UCLA
Phi Province

Province Chapter Service Winners



Janet Gershen
Boston University
Alpha Province



Christina Adams
U. Western Ontario
Beta Province



Katie Hale
Bucknell
Gamma Province



Gina Tesoriero
University Maryland
Delta Province



Lori Klein
University S. Carolina
Epsilon Province



Vicki Harkrider
U. Central Florida
Zeta Province



Mary Sofy
Michigan State
Eta Province



Betsy Baker
DePauw
Theta Province



Gina Broccolo
Miami University
Iota Province



Becky Youngs
Eastern Kentucky
Kappa Province



Beth Perkins
Southern Mississippi
Lambda Province



Jeanie Egmon
Monmouth
Mu Province



Jane Kelsey
Iowa State
Nu Province



Becky Floyd
Kansas State
Xi Province



Melanie Garner
University Oklahoma
Omicron Province



Katie Branch
University Colorado
Rho Province



Lisa Cole
Washington State
Sigma Province



Carol Bigelow
University Oregon
Tau Province



Catherine Hawley
University of Utah
Upsilon Province



Nancy Cox
UCLA
Phi Province



Illinois Alpha Pi Phis joined with Sig Eps for Scot Sing, annual song and dance competition sponsored by Blue Key at Monmouth. They performed a medley of songs from the '20s through the '80s, and were overjoyed to win first place in the large group competition.

Chapter works hard toward successful rush

by LISA CURTIS

With the onset of August came the realization that not only were fall classes at the University of Tennessee at Chattanooga to begin in less than a month but also that the time had come to begin serious practicing and planning for formal fall rush. The first thing to do was to raise some money to help defer the ever increasing cost of rush. So on the first Saturday in August with temperatures pushing into the high nineties, the sisters of Tennessee Alpha manned their hoses at a local bank for a car wash. Things began rather slowly—washing only our own cars and joking that we might not make any money but at least we would have the cleanest cars in town.

It wasn't long, however, before we had to divide into two groups to keep up with all the cars. One elderly gentleman brought in his two cars to be washed. He told us that his wife had been in a sorority at UTC, and he hoped she had been a Pi Phi or he might be in trouble when he got home. Fortunately for him his wife turned out to be a forty year alumna of Pi Phi!

After our success with the car wash, it was time to hit the road for our annual rush retreat. This year we went to Watt's Bar, a resort about an hour and a half from Chattanooga, where we rented three cottages for the weekend. Although we worked hard learning or relearning the routine of rush parties, new skits, and new songs brought back from Convention, we still found time to enjoy the swimming pool. By Sunday, everyone was tired but confident about rush.

Rush began September 6. This year we used a new skit for first round entitled Arrowport, with sisters dressed as Pi Phis from all over the country. TGC Leslie Zeller even got into the act by wearing a luau shirt and carrying a styrofoam surfboard when one of the sisters, who played a California girl in the skit, had to miss a party. We used a revamped 50's skit for the second round of parties. Everyone wore ponytails and bright red lipstick except the girls who slicked back their hair and dressed as boys. President Pattye Cook was the hit of the party with her imitation of Bowzer from the singing group Sha Na Na.

After the fun of the first two rounds, it was time for the seriousness of preferentials. The house was beautifully decorated with ivy, and everyone looked lovely in their long white dresses with wine and silver blue sashes. Everything seemed too good to be true but not for long!

Before the first party, we found out that our piano player was not going to be able to make it. Luckily, we were able to get a tape of the music. It worked fine for the first party. We weren't so fortunate at the second. When the recorder refused to play, we were forced to sing a cappella. There must have been some Pi Phi magic in the air because our harmony sounded even better without the music!

The next afternoon we gathered with the other two sororities outside the campus chapel. The rushees would soon be running through the doors to their new sisters. Tough economic times had dramatically decreased the number of girls that went through rush this year. It was Pi Phi, however, who lost the least number of girls compared to last year.

Internat'l camp promotes peace thru understanding

Melissa Schloegel, Mississippi Alpha (University of Southern Mississippi), participated in an international camp last summer. The organization is known as the Children's International Summer Villages (CISV). It involved twelve countries with four eleven-year-old children from each country. There were two boys, two girls, and one adult leader from each country. The purpose of the village is to promote peace through understanding between the children. The camp lasts for one month, and everyone develops close relationships and lifelong friendships.

Every country has its own culture, customs, songs, and dances. During the camp each delegation had what was known as National Day. On this day everyone in the camp participated in activities which were typical of one particular country. These included eating their type of food, playing games, and dressing in national costumes with the entire camp singing songs and learning dances of that country. This was a very simple way for everyone to learn about the other countries and realize that the differences between the countries are less important than the likenesses which bind them together.

Melissa was the assistant director of the camp which was held in Biloxi, Miss., one of twenty-six camps being held all over the world last summer. CISV is not new to Melissa. She was one of the eleven-year-old children who represented the United States at a village in Manchester, England, in 1974. She then participated in a village in Detroit, Mich., as a 17-year-old junior counselor. Having participated in three camps has allowed Melissa to develop some wonderful friends from all over the world.

Actress wears arrow with pride



Katherine Brewster

Kathi Brewster is an actress on her way up!

A California Gamma Pi Phi, Kathi says that it was through the University of Southern California that her interest in the field of acting was stimulated. Being in the Los Angeles/Hollywood area helped her pursue her interests and she has done a number of commercials so far—Suzuki, Redken, Kay Jewelers, several designer shoe companies, and different lines of jewelry and makeup.

"Cal Gamma was a ball!" said Kathi. "I was song chairman for my pledge class and a vocal performance major in school. Inter-acting with the students on campus and all my Pi Phi friends helped me a great deal to communicate better, and it was an excellent stepping stone to the 'real world.'"

In addition to her modeling work, Kathi has done some commercial vocal recording and appeared in several musical comedies in the L.A. area. She carried the lead in "Grease" on stage in Hollywood. She guest-starred recently on the "Fall Guy," and other recent TV credits include "Fantasy Island," "No Soap, Radio," "Romeo and Juliet" for PBS, and "Days of Our Lives."

"I wear my arrow all the time and love to boast of my Pi Phi S.C. days," wrote Kathi. "A stop in at the house or a good Southern Cal football game makes me smile and cherish all I've gained from my experiences as a Pi Phi."

Park Gate home is historical site

by LAURA G. NIDERNHOFER

Going through sorority rush at Duke University presented me with an unusual challenge. Most girls were able to use their hometown as an ice-breaking topic of conversation. But when asked where I was from, Nokesville, Virginia sparked no fond memories of travel or old acquaintances among the sisters of North Carolina Beta Pi Phi. Two hundred and fifty years ago the response would have been quite different, for in 1735, Nokesville was the site of the Park Gate estate.

Eight years ago I moved to my present home, Park Gate, with my family of five, each with our own visions of how the house would look once restored. None of us had any idea that the project would last for more than eight years. The contract entitled us to forty acres of land (a modest portion of the original 10,000 acre tract), a slave quarters, two chicken houses, and a graveyard hosting Mildred Washington (our first President's niece) and her husband, Thomas Lee (uncle of Robert E. Lee).

We began by taking a vote and deciding that the house was unfit for our carefully collected antiques. So all of the furniture was moved to the barn for a year and we quickly learned to make do with a hibachi grill and a dishpan for clothes, cutlery, and bathing alike.

After the essentials were completed (installing a well, plumbing, electricity, and shoring up the house with railroad

jacks), the restoration began, based on research as well as trial and error. The old horsehair and mud walls were torn down and replaced by drywall covered with fresh plaster to give it the rough "home-made" look. The hand-hewn woodwork was carefully sanded and varnished to accentuate the wide-board pine floors. The glass was removed from the windows and reglazed, respecting the fact that this was probably the first owner's prized possession, as it had to be imported from Europe in the early 1700's. We began on the exterior of the house in our second winter. I remember waking to find snowdrifts in my bedroom that had not melted! The only consolation was the five fireplaces in the house.

We have had a dozen visitors to Park Gate who had relatives either born in the house or treated for battle wounds during the Civil War. Interesting finds have included pennies from the 1700's, cast iron children's toys, marbles, the original front door key, and a portion of a jawbone in the dining room wall!

Today the house is a registered historical site and welcomes antique buffs. Every article in the house is antique and is displayed in its most likely original condition. What was anticipated as a weekend project turned out to be a lifetime commitment to learning the truth about, and respecting the traditions of the past.



Kansas Alpha's social chairman, Lisa Monasee, smiles and waves, happy about all the money the K.U. chapter was making for the social fund! The all-house effort gave members a chance to work together and to get re-acquainted after the summer.

Pi Phi Pacemakers

Mortar Board



Kathy Larkey
Albion College
ODK, Who's Who



Stephanie Phillips
Montana State



Kristen Koch
Montana State



Ellen Mathias
University Texas



Mary Rogers
University Missouri



Elizabeth Tyndall
University Missouri



Nancy Houghton
University Missouri



Carol McGowan
Willamette



Karen Karterman
Willamette



Deborah Leamon
Willamette



Claire Bailey
Knox College
Phi Beta Kappa



Carolyn Balster
Knox College



Robin Randolph
University Oklahoma



Deanna Mcimore
University Oklahoma
ODK



Lisa Hughes
University Oklahoma
ODK



Janet Whalen
University Oklahoma



Kim Ervin
Bradley



Patsy Hewes
Ohio State



Jean Bajusz
Iowa State

Pi Phi Pacemakers



Judy Reishus
University N. Dakota



Katy Ottensmeyer
Arizona State
ODK

Mortar Board



Jennifer Hinkebein
University Louisville
ODK, Who's Who



Lauri McLaughlin
University Colorado



Kelly Watson
University Colorado



Suzanne Hebert
Southern Methodist



Barbara Nellen
University Washington



Lori Jane Guritz
University S. Dakota



Cathy Neff
Florida State



Thea Nuis
UC/Berkeley



Debra Ann Blatzer
Monmouth



Mary Hammond
DePauw



Stacie McHan
University Arkansas
ODK



Barbara Panzel
Albion



Lisa Taylor
University Toledo



Kimberly Blazek
Illinois State



Cheryl Walton
W. Virginia Univ.

Athletic Angels

Intramurals

Kansas Alphas continued showing their enthusiasm for participating in campus events by placing third in the annual Delta Gamma Anchor Splash swim meet.

At Ole Miss, the Mississippi Beta swim team set a new record in the medley relay at a recent all-university meet. The team of Karen Gore, Sheri Parker, Eva Ann Shepard, and Lynda Yates had a time of 2:26.55 to give the Pi Phis a first place finish. For their efforts, the girls each received an Intramurals Champion T-shirt. Overall the team came in third.

The athletic angels of Arizona Beta had a super year in 1982-83. They started off by taking the All-Sorority intramurals banner for the year at Arizona State and finished by winning the All-Campus banner!

After defeating the Tri-Deltas and trampling the Thetas, the Arkansas Alphas are once again a threat on the University of Arkansas football intramural scene.

Maryland Beta was ranked in the top ten overall in the University of Maryland women's sports program for the 1983 season.

Missouri Alpha has proven itself to be a dominant force in intramural action at the University of Missouri. With first place finishes in flag football, track and field, basketball free throw, and soccer competition, they captured second place finishes in softball and volleyball. This put them at an overall second place finish after placing first the two previous years.

The Intramural Trophy at the University of Louisville was retired last spring after Kentucky Alpha won the all campus intramural championship for the third year in a row.

The University of Kentucky athletic department holds a women's intramural tug-of-war annually, and Kentucky Betas have won the event for eight consecutive years!

Massachusetts Alpha Susan Gellerman led her intramural bowling team into their second first place showing in two years. She also represented Boston University in a competition for Massachusetts colleges, and helped the team to second place.

Marlene Igel and Lisa Rosenzweig, Illinois Epsilons, placed first in the women's doubles division of the Northwestern University Theta Tennis Classic, an annual spring competition sponsored by Kappa Alpha Theta.

Texas Epsilon did very well in North Texas State intramurals

last April. The Pi Phi Packers won first place in the Greek Division of softball.

Varsity

Oregon Gamma sophomore Darci Piper is a member of the Willamette University swim team as a diver. She spent the summer coaching a group of six to fifteen years old youngsters in diving skills and form.

Annette Orthober, Kentucky Alpha, is in her second year of swimming at the University of Louisville. She is on a swim scholarship after receiving five gold and two silver medals at the Kentucky State Championships last spring. She holds a record in breaststroke and butterfly at UofL and was one of the few members to letter her freshman year.

Tiffany Hill, Colorado Alpha, holds a four year scholarship to the University of Colorado and plays basketball on the Lady Buffs team.

At Monmouth, two Illinois Alphas are creating athletic waves. Merry Davinroy was voted Outstanding Freshman Woman Athlete after excelling in volleyball and softball. Ann Jamieson was voted Outstanding Sophomore Woman Athlete, competing in volleyball, basketball, and softball. Ann was sixth in the nation in her division in basketball.

Jiji Wade, Oklahoma Beta, is on the 1983-84 Oklahoma State tennis team. She placed first in the Tulsa Women's Single Division tournament.

California Beta Michelle Abbot has been very busy pursuing her tennis career. She spent last summer playing on a tennis tour in Canada and the Northwest. She is a representative for the Women's Athletic Association at UC/Berkeley.

Also at Berkeley, the soccer team has struggled for respect and intercollegiate status for years. Last year with the help of some California Betas, Berkeley had both, making the step up the intercollegiate level and compiling an impressive 25-1 record that included three tournament championships and garnered the team a #12 ranking in the nation. Six Pi Phis are on the team: Leslie Gallimore, All-American; Katherine Gustafson, All-Western; Jenny Thomas, Jamie Vidal, Lynn Bayer, Jenny Caselle, and Christina Misen.

Iowa Betas Kristie and Paula Kehoe are members of the Simpson College volleyball team. Paula is a two-time letter winner.

Kansas Betas are two time champions in sorority volleyball competition. They received 1st in four other events during Sigma Chi Derby Day at KSU, and two 2nds, to place 2nd overall.

Kansas Alpha senior Susan Oswald takes off for a gain in yardage, eluding the grasp of a chagrined Kappa, during a fierce intramural football match at K.U.



Tracy Ralph, **Kentucky Beta**, is captain of the award-winning University of Kentucky gymnastic team. She has been a member of the squad for the last three years and has won many awards in competition throughout the region.

Oregon Gammas were ever present as the Willamette athletic teams returned to train for the fall season. Debbie Leamon, Margaret Dancan, and Beth Russi are on the athletic trainers staff and can be found overseeing football and baseball practices every afternoon. They are expected to provide on-the-spot first aid and to direct major injuries to a local doctor or hospital.

Dianne Cullen, **Ontario Alpha's** V.P. Moral, rowed for the University of Toronto's Junior Varsity crew last fall. She valiantly made it through six weeks of gruelling early dawn practices, displaying undying spirit, determination, and dedication.

Michigan Gamma Karen Carboni was a member of Michigan State's Women's Swim Team for four years, received the team spirit award as well as a senior "S" ring for her active membership in MSU's Varsity Club.

Tri-Athalon

Colorado Alpha Peggy Brewer took off last spring to train for and participate in the annual tri-athalon held in Hawaii. The race entailed a two mile swim, 26 mile run, and a 100 mile bicycle ride. Peggy finished the whole course!



These **Tennessee Delta** officers work together as well on the court as they do off. President Julie Thompson and V.P. Moral Amy George won 1st place in Panhellenic racquetball doubles at Memphis State.

Amy Priest, **Oklahoma Alpha**, is a member of the Oklahoma University gymnastics team and hopes to compete in the Olympics. She is a freshman and has competed in the Elite Category in four national meets and the USA championship.



Biking

Norma Knoop, **Indiana Eta**, was in a 21 mile bike race in the Mentone, Ind., Egg Festival last June. After 80 minutes of pedaling, Norma was the second place finisher in the woman's overall. The only preparation that Norma had for the race was riding her bike to and from work every day.



New Mexico Betas Janice Littlefield, Ann Coombes, and Becky Christiansen are the top women golfers at NMSU. They are founding members of the women's golf team, with the sport now receiving university funding and the right to play in the High Country Athletic Conference.



Demea Caporal, **Oklahoma Alpha**, is an OU golf scholarship recipient and is one of the top five players on the team. She has won numerous local tournaments and has competed at the national level.



Sarah Burdsall, New York Gamma, left, was one of seven Pi Phis on the St. Lawrence women's basketball team which finished the season with a #2 ranking in Division III N.Y. State Women's Basketball. ABOVE: Dana Starr, left, and Linda Young, right, are members of the Simpson College girls tennis team. This is their fourth year on the team and they are three-time letter winners.

Directory phone phase to begin

This month, the Harris Publishing Company is conducting telephone follow-ups to alumnae for verification of the information to be printed in the directory. At the same time, the telephone representatives are inviting alumnae to order personal copies of the volume. These requests are made by the Harris company with complete approval of Grand Council.

The telephone call is a follow-up to the two questionnaire card mailings sent to all alumnae with verified addresses. If you have not received your questionnaire, please contact Central Office immediately.

The directory will provide a complete listing of all living alumnae with current addresses, including a biographical sketch on each alumna with name, initiation date, chapter, residence address and phone number, and business or professional information where available. Directories will be available to alumnae in the spring at no cost or obligation to the Fraternity, and, as a by-product, the Harris Publishing Company will provide the Fraternity with completely updated alumnae records.



Ardyce Reisner Asire, Ohio Delta, right, was recipient of Ohio Wesleyan University's Alumni Award during Alumni Weekend last spring. Presenting the award was Lolly Newman, left, Director of Alumni Relations. (Photo—Mohsen Shirzadian)

First Friday float wins second place honors

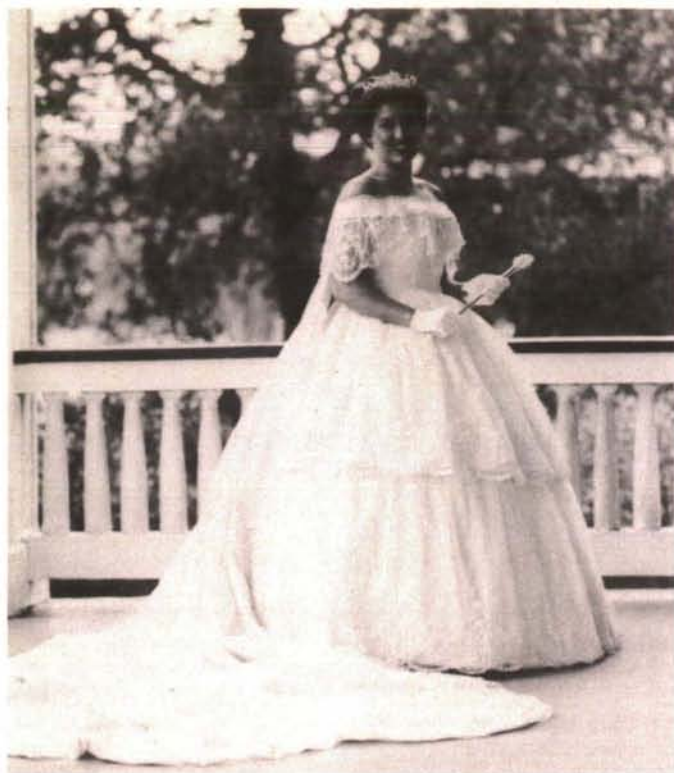
by DIANA PHILLIPS

Rain, rain . . . what a pain! A fancy float made of wood, chicken wire, and pomp sure can get soggy when one of Nature's elements gets a hold of it! Clemson Pi Phi did not let the early morning and past evening's showers dampen their spirits that Friday, September 2nd. By midafternoon, the majority of happy helpers were out finishing the masterpiece—the Pi Beta Phi float. A few touch-ups took care of the wet places and "all-hands-on-deck" made the finishing tasks a breeze. The South Carolina Beta tiger rode Georgia Tech's yellow-jacket proudly down famous Death Valley Hill. The chapter admired their work of art knowing the First Friday parade float judges would like it too.

At 5:30, all the towering giants of paper and wood could be seen lining up for the day's activities. The festive parade was soon to begin. Getting organized was tough, but the chapter managed to line up in a military fashion. The march was on and they began their cheerful chants and "Pi-Pi-Beta-Phi . . ." rang throughout the Clemson campus. The parade ended at the Clemson amphitheater for a pep rally. At the end of the pep rally, it was announced that our float came in second place.

They all knew it was a winner—Pi Phi do everything well!

Katrina Fair, Indiana Zeta, Miss Ball State for 1983, competed in the Miss Indiana pageant in June, and was chosen 2nd runner-up. Katrina performed an acrobatic-jazz routine for the talent competition.



Dawn Eidt, Natchez Pilgrimage Queen

Dawn Eidt reigns over 52nd Natchez Pilgrimage

"Since the origin of the Natchez Pilgrimage in 1932, the Confederate Pageant has been the highlight of the gala month of March. For a brief period it seeks to turn back the clock a century or more to those far-away, courtly days—days of stately bows, of rustling silks, of fluttering fans, of 'Swords and Roses' to present in a bright fleeting moment the charm of a gracious past."

Reigning over the 52nd Pilgrimage was Mississippi Alpha Phi Alisa Dawn Eidt. Dawn was selected Queen in June, 1982, with festivities beginning in November and continuing through the end of March, 1983. During the month of March she reigned as Queen of the Confederate Pageant four nights a week.

Her elegant antebellum ball gown and train were designed and created by her mother and friends. Its 1860 design was of embroidered English netting encrusted with pearls, crystals, and aurora borealis.

A gala ball was given in her honor with her chapter sisters and dates as guests for the ball and the Confederate Pageant.

Dawn is a junior accounting major and has served as chapter house chairman and treasurer, and participates in all intramural sports at Southern Mississippi.

Angels are a tradition at Dawn's house as her mother (the former Prissy Baker) was a charter member of Mississippi Alpha chapter.



French family life is wonderful experience

Last summer Cornell Pi Phi Judy Argentieri decided it was time to put her knowledge and understanding of French to the test. On June 26, she and 25 other students set out for six weeks of study and fun in France. The program sponsored by Hofstra University, is based in the Mediterranean city of Nice and includes four weeks of study and two weeks of travel. The courses are offered for students at different levels of French.

Although the courses were well-organized and very informative, Judy believes that the best feature of the program was living with a French family. "My French family was wonderful!" Judy enthused. "They showed me around, took me to family picnics, taught me a lot about their culture, and were great when it came to helping me with my speaking."

Her French parents spoke very little English, although her sister was almost fluent. In any case, they refused to speak English with Judy unless it was absolutely necessary. They even had her playing "Scrabble" in French.

"The summer was an unforgettable one, which contained several funny incidents that pop into my head from time to time," said Judy. "First, while on an excursion to Monaco, I ran into Cornell Pi Phi Karen Parfitt. That was a shocker for both of us! But the story that I tell most often when I'm asked about my summer is an anecdote which clearly illustrates some of the societal misconceptions that develop across cultures.

"Upon arriving in Nice I was suffering from a severe case of jet lag. In fact, I was so tired that I remember very little of that first day, save a lot of sleeping. However, my family indicated several points of interest during the drive to their mountainside home overlooking the Mediterranean. After showing me around the



Judy Argentieri, left, with her French sister, Sandrine, in the mountain village of Falicon, France, just outside Nice. They are standing in front of a Veterans' Memorial following ceremonies on Bastille Day.

house, they led me straight to the refrigerator. Sporting huge smiles, they opened the door to reveal a refrigerator stocked with beer and Coke! Talk about stereotyped Americans! It was amusing happenings and mutual learning experiences like this that really made the summer for me!"



Sara, left, and Mary Weaver have their Pi Phi arrows pointed in the right direction on the Missouri campus.

Sisters serve Panhellenic in important positions

by MARY VANDELICHT

Pi Phi sisters Sara and Mary Weaver, Missouri Alpha, are two of a kind. Their enthusiasm for campus involvement is unmatched.

Both women have served the sorority system at the University of Missouri in a big way through Panhellenic. This fall Sara was Panhellenic rush chairman, after serving as public relations chairman last year. Mary was Pledge Panhellenic president in the fall of 1982 and last spring was named outstanding pledge for the entire campus.

While Sara has been active in the academic and service honoraries Omega Delta Kappa, Kappa Epsilon Alpha, and Sigma Rho Sigma, Mary has participated in Kappa Epsilon Alpha and Phi Eta Sigma. Both sisters spend time on the Alumni Association Student Board and are journalism majors at the university.

Reunion brings memories of good Ann Arbor days

by GRETA LEE BANZHAF

What a wonderful idea Pat Arnall Lynch had to invite Michigan Beta Pi Phis of the 1940s to return to Ann Arbor for a weekend of just being together again after 35 (and more) years!

Gathered from all parts of the country for a warm and rejuvenating reunion, came Betty Whiteley Johnson, Marge Mahon Bradt, Betty Asselin Munro, Mary McAndrew Harper, '39ers; Nancy Hattersley Connell, Jane Pritchard Harker, Mimsi Wendell Ryan, Lois Fromm Breitmeyer, Sue Tuck Fromm, Pat Arnall Lynch, Shirley Hassard Van Der Kar, init. '41; Bev Gottschall Haven, Helen Miller Waldron, Ann Cook, Fran Tripp Pettapiece, init. '42; Barb Fairman Jickling, Paula Broward Coppedge, Carol Watt Traugott, Ruth Ann Strack, Marge Siebert Branaka, Carol Anderson Spreen, Ginny Bishop Brown, Ruth Whittlesey Joyce, Pat Gehlert, Rosamond Mayo Lloyd, Greta Lee Banzhaf, init. '43; Ann Robinson, Phyl Chapel May, '44; Marge Sadler Robinson, '43, Gwen Switzer Groves, '44. The latter two live in Ann Arbor and took on the responsibility of opening the chapter house and providing food for breakfasts, as well as helping with transportation.

Armed with our pillows, sheets, and suitcases, we arrived late Friday afternoon and swarmed all over the enlarged house, joyously greeting each new arrival. Remarkably, we all looked just the same except for a little graying. Marge Robinson finally coralled us for dinner at the Barton Hills Country Club where the beautiful centerpiece was wine and silver blue. Some of our number stayed up until the wee hours after we returned to the house, put on our robes, took out our pictures, and started "catching up" with each other.

Between discovering that several of our group had large families and finding out so many other things about each others lives, our two days together were too short. We took pictures, roamed over the old campus, explored the new north campus (Barbara Jicklings' husband designed the Gerald Ford library there), hardly recognized Ann Arbor, and dined at the Pretzel Bell—that now sophisticated restaurant bearing small resemblance to the old P. Bell that we once knew. So it went. . . .

Each of us has her own particular memories of that weekend but to all of us it was a very special time in our lives—a wonderful once-in-a-lifetime occasion where we shared old memories, created new ones, and thoroughly enjoyed every minute of renewing our bonds of friendship and love in our particular part of Pi Beta Phi.



Laura Fields and Bubbles in fierce competition.

Laura and Bubbles are winning pair on circuit

by BECKY ORGAN

Laura Fields, a Texas Gamma junior at Texas Tech, spent most of last summer competing in Appaloosa horse shows, and, in addition to shows in Texas, she traveled to Nebraska, Oklahoma, Kansas, and Missouri.

Laura and her horse, Willies T-Bone, nicknamed Bubbles, appear in many shows during the school year. The pair won the stake race for the Dal-Worth club and the 1983 high point games events and high point performance horse for the Texas Appaloosa horse club. They are currently tied for first in the national standings, which are shows held through December.

In October Laura and Bubbles went to Oklahoma City for the World Championship Appaloosa Horse Show, for which they had qualified in two events.

Wins Fulbright to Colombia

Stephanie Hedstrom, Missouri Beta, has been awarded a Fulbright grant to Colombia, South America, for a year of study. Stephanie is a spring graduate of Washington University, where she was initiated into Phi Beta Kappa in May. She is enrolled in the Medical School of the University at Bogota, studying in the area of public health.

The award was announced by the Board of Foreign Scholarships and the United States Information Agency.

*Make
ARROWMONT
One Of Your
Favorite Philanthropies*

Collegian is named to Norman parks committee

Lynn Smith, Oklahoma Alpha, is a new member of the Norman City Parks and Recreational Committee as a result of a proposal she wrote.

Lynn is a member of the University of Oklahoma Student Association. The increased number of bicyclists around campus had produced a conflict with pedestrians in the city. Lynn conducted a survey on campus and found that residents favored installing a bikeway and sidewalk. She wrote a resolution noting that it was the responsibility of the community to provide a safe environment for its residents. The resolution was presented to the Student Congress and the Norman City Council.

After much consideration, City Council adopted 70 percent of Lynn's proposal, costing approximately \$130,000. As a result of her efforts, she is now a functioning member of the Parks and Recreational Committee.

Fund appeal needs YOU!

Appeals for the 1983-84 Friendship Fund are now in the hands of Pi Beta Phi alumnae. Have you responded with your contribution? Support for the Fund allows Pi Beta Phi to maintain her quality of excellence in many categories.

Workshops, scholarships, grants, and fellowships continue to help both collegians and alumnae. The Fraternity continues to seek opportunities for expansion, both on campuses where chapters once have been active, and on qualified new campuses.

Alumnae support has made it possible to place more emphasis on publications and to aid in chapter and club development.

New gallery exhibits and expanded facilities at Arrowmont are a direct result of Friendship Fund dollars. Remember, 50 percent of your gift is tax deductible because it is allocated to the support of Settlement School (Arrowmont).

Won't you respond to the Friendship Fund appeal today?

Can there be any doubt that Tennessee Betas have a blast at the annual Graduation Brunch? Rossi Stanton and Jane Hines McGown, AAC Chairman, indicate their pleasure at being a part of the tradition. Actives prepare lunch while the new Vanderbilt grads spend time with family and friends.



New York Gamma's houseparents, Aileen and Emmett Davis.

Wedding brings new housemom

by SANDY MCPHERSON

New York Gamma is one big happy family, complete with a set of house parents! When Emmett Davis, house father of two years, married Aileen Shapiro last July, the St. Lawrence chapter was thrilled to welcome a new head of the household.

Aileen, a graduate of Canton ATC, met Emmett at a 1980 mixer between his fraternity, Beta Theta Pi, and her sorority, Pi Nu Epsilon. Following graduation, Aileen became the house director at Pi Nu and Emmett was chosen as Pi Phi's house father. Aileen has long been a smiling, familiar face at the house, as she was initiated as a social sister in 1981.

The New York Gammas love their new house parents; not only are they figures of authority, but friends who are willing to lend a helping hand or a listening ear.

The new "Mom and Dad" also enjoy their new role, bringing a wealth of knowledge to the sisters that is helpful in any situation.

Both have high hopes for the sorority. "I'd like to see this house continue growing at the rate it has been over the past few years," beams Aileen, who enthusiastically assisted the sisters with all the rush functions. "I love being a Pi Phi, and being a house mother here."

Aileen is currently working in the university Theatre Arts Department as a costumer. Emmett is the assistant basketball coach at St. Lawrence, and teaches 7th grade social studies in the nearby village of Massena.



Last June, 30 members of Iowa Gamma pledge classes 1968 thru 1971 gathered at Iowa State to reminisce and catch up on lives of friends. Michelle Morris Leeper, Bonnie Voelker Jackson, Becky Raun Westberg, Jane Zabel Paul, and Theresa Sexton Sampson were organizers of the memorable weekend.

Songstress-composer sets sights on record business

Mississippi Alpha's Linda Bishop is an angel in pursuit of stardom. Linda, who won the Junior Panhellenic Talent Show at Southern Mississippi, has been pursuing a career in music for many years. Now she's getting her big break. In the spring, Linda met song-writer Mark Grey. Grey has written songs for Alabama, Melissa Manchester, and many other popular stars. After hearing Linda sing and liking her "feel" for music, Grey booked her a recording session in Jackson, Miss. At the studio, Linda sang a song Grey had written for her and cut a demo-tape. Grey then took the tape to Nashville, and played it for fellow songwriters, CBS records, and Warner Brothers. These people felt she had potential.

When asked about her ultimate goal,

Linda replied, "I want to be able to make hit records, but I don't want them to be commercial for the sake of being commercial." She says she wants her own style and to be able to express herself. Eventually she would like to go on the road.

At the suggestion of Grey, Linda moved to Nashville to cut a record. Her scheduled date to go to the studio was the second week in June.

This summer Linda took piano and guitar lessons and worked in the studio recording demo-tapes for other artists.

Now that Linda has this opportunity, she has started to set goals. She is eager to write her own songs and possibly having her name on an album as a co-songwriter with Grey.

First Duo is success at Illinois State

The first Monmouth Duo between Illinois Iota and the Illinois State Kappa Kappa Gammas was a huge success. With an idea borrowed from *The Arrow*, the two houses started festivities with a dinner exchange. Each Pi Phi was set up with a Kappa so that everyone was able to meet a special new friend.

T-shirts were exchanged and worn to

classes the next day. Illinois Iotas wore their arrows pointed straight on the Kappa shirts, while Kappas wore their keys pointed upward on the Pi Phi shirts. A dance with dates followed later in the evening.

Many new friends were made and the chapter is looking forward to the next Monmouth Duo.

Alums thanked for new look

by JULIE LORDAHL

The chapter house at Washington Alpha has been given a beautiful new look thanks to many generous 75th Anniversary fund donations from the alumnae. 1982 marked the 75th year of Pi Phi on the University of Washington campus, and in recognition of this milestone, a fund was established to be used for decorating the main floor of the chapter house.

The colors chosen, salmon, plum, grey, and wine, were incorporated throughout, and gave the main floor a bright, contemporary appearance.

House Corporation chairman Karin Estey Williams and an interior decorator supervised the project and spent countless hours choosing new paint, fabrics, and carpeting. Karin William's primary concern was that the house be functional for the members' needs and that there was a consistent color theme throughout the rooms on the lower floor.

Washington Alpha actives were excited by the changes they found when returning for school, and were very proud to show off the house during rush.

The actives wish to express a deep thank you to those alumnae who made contributions in time and money, thus making it possible for Pi Phi to be one of the most beautiful of the 20 sorority houses on campus.

Albion first lady is a Pi Phi—again

Albion College has a new president and a new Pi Phi on campus.

On September 30, Albion inaugurated its thirteenth president, Dr. Melvin Vulgamore. Dr. Vulgamore replaced Dr. Bernard Lomas who is now serving as chancellor. Dr. Lomas' wife, Barbara (West), is a Pi Phi.

So why is Michigan Delta so happy about the new president? They have discovered that the new first lady of Albion, Nan Oyer Vulgamore, is a Pi Phi also! An Ohio Eta to be exact.

All of the Michigan Deltas are happy to welcome the Vulgamores to Albion and they are looking forward to a great future with a new alum-sister in town.

Missouri Betas have Panhel tradition

by JANICE MACAVOY

The Missouri Beta Pi Phis at Washington University have started a Panhellenic tradition in their chapter. They're keeping it in the family. Three generations of pledge mothers and daughters have served as chapter Panhellenic representatives.

Peggy Klein, the Pi Phi who began the tradition, served as Panhel rep her sophomore year. She later told her pledge daughter, Meg Roman, of the rewarding experiences. Meg was convinced, and she too, served as Panhel rep her sophomore year. Meg then convinced her pledge daughter, Janice MacAvoy, not to let the tradition die. Janice also served (and still is) as Panhel rep.

As each generation participated in Panhellenic, they watched it grow. Washington University experienced somewhat of a depression in Greek life during the years preceding Peggy's term. Panhellenic had lost much of its effectiveness in organizing the sororities and in programming activities. During Peggy's term of office, Panhellenic struggled to become more than just a rush organizer. The organization tried to

regain its strength of previous years, but with only four sororities and no advisor, it was difficult to get back on its feet.

Panhel had made great progress by the time Meg had come to the office. An administrative advisor for Greek affairs was appointed, and Panhellenic began to get stronger and stronger. Traditions such as Greek Week and the Panhel Formal became more popular as they were given increased support. As Panhellenic grew stronger through the hard work of the Greek advisor, Panhellenic president and Pi Phi Leslie Davis, and the sorority women, it became evident what Panhellenic could do with a little support.

By the time Janice began her term, the organization had grown even stronger. The colonization of a new sorority brought a great deal of enthusiasm and support for and from Panhellenic.

This year Panhellenic is involved in more activities than ever before. A Panhellenic philanthropy has been established for Greek Week, women from all of the sororities have joined together to serve on interest groups, and Washington University Panhellenic will serve as this year's host for the first annual MIFCA/MAPCA Missouri Regional Conference.

Each generation of pledge mothers has passed on to her daughters the awareness of Panhellenic's potential for growth. We know that Washington University Panhellenic Association will continue to grow with the aid and support of the Pi Beta Phis.



Heather Krاندell, Indiana Eta, spends much of her free time cheering for the Tuskers at Indiana-Purdue at Ft. Wayne. This is Heather's second year on the cheerleading squad at IPFW.



Godsisters Holly Hart, left, and Ashley Symmes, right, are also Pi Phi sisters. Ashley, Washington Beta, recently traveled across country to visit Holly, New York Delta, whom she hadn't seen in ten years, and, in addition to personal remembrances, exchanged Pi Phi stories and shared their pride in the wine and silver blue.



At the University of Maryland, Dotty Steele is news director of WMUC, the campus radio station, with a staff of 75 people, and is the only woman on the governing body of the station. Dotty also was awarded a \$500 scholarship from the Scripps-Howard Foundation, to be used toward senior tuition.

Memphis Club award goes to Joy Hilliard

by KELLY WARD

The Memphis Alumnae Club in Tennessee issues an award each year to the outstanding sophomore in Lambda Province who best represents the ideals of Pi Beta Phi. Louisiana Beta is very proud that their president, Joy Hilliard, was chosen as recipient of this award. The selection is based upon academic honors, service to the chapter, and service to the university.

Joy has maintained a 3.9 cumulative average for four semesters. She is the recipient of two four-year scholarships and received the LSU Chancellor's Freshman Award in 1981. She was an Outstanding Mortar Board nominee for two years and has been on the Dean's List every semester.

As for service to the chapter, Joy was chairman of different projects before being elected chapter president. On the LSU campus, Joy is a member of the freshman honorary society, the pre-medical honorary society, the honorary Latin society, the pre-veterinary club, and the LSU Panhellenic Presidential Council.



Susan Akin, Mississippi Beta, was named 2nd alternate to Miss Mississippi last summer, after winning the swimsuit preliminary and receiving a \$2,850 scholarship. Susan is Miss Scott County and 3rd alternate in the Miss University Pageant.



Georgia Alpha won the first place trophy for overall intramurals for the second year in a row at the University of Georgia, thanks to the hard work of chairmen Carol Mammoser and Libby Yates. They made sure Pi Phi had girls participating in every event.

Cruise ship is summer home

Laura Blakeley, Texas Alpha, landed an exciting job last summer, working with Carnival Cruise Lines on the T.S.S. *Festivale*. Her duties included public relations and entertainment.

The crew consisted of 21 girls and 650 men, from all over the world. Laura, the only one from Texas, represented the university, her chapter, and the state in rare form. She became close friends with girls from such places as Egypt, Peru, England, and Venezuela. Since the line is based in Italy, most of the men on the crew were Italian. With odds like those, she had an interesting and exciting summer.

The ship traveled to the Virgin Islands, Bahamas, and Puerto Rico. Each cruise lasted eight days. With 1,500 new passengers each week, Laura was exposed to many different people. Her daily interactions with those she met led to friendships that will last a lifetime.

Hancock digs old things!

A senior anthropology major, Priscilla Hancock, Virginia Gamma, spent last summer in the Caribbean on a school program. It was an archaeological field school based in the island of St. Eustatius in the Dutch Antilles. Priscilla and 29 other students from William and Mary and other college campuses participated in excavations on the island.

In the 17th century, St. Eustatius had been a major trading port and exporter of sugar as well as cattle. The remains of three sites were excavated: the slave quarters on a sugar plantation; a synagogue, the second oldest in the New World; and one of six hundred warehouses located along the Caribbean shore. The work was very difficult but worthwhile for the educational value and the opportunities it provided to become acquainted with a different culture.

Presently St. Eustatius is inhabited by approximately 1,500 people, most of whom are descendants of the slaves who remained after the prosperity of island trading dwindled. Crystal blue waters, palm trees, fresh mangoes, and an ancient volcano provided a beautiful backdrop from which to enjoy the kindnesses and contented attitudes of a culture unhindered by the complications of commercialization.

Blackwood earns officer's award

Carolyn C. Blackwood, McLean, Va., chief of Food Production Service in the Warren Grant Magnuson Clinical Center of the National Institutes of Health, has received a United States Public Health Service Commissioned Officer's Award.

The Clinical Center is the research hospital of the National Institutes of Health, the Federal government's primary facility for biomedical investigation.

Dr. Jay R. Shapiro, acting director of the center, presented the award to Carolyn during a ceremony last April. She was recognized for major contributions to the nutrition department.

Carolyn is a Connecticut Alpha (U. of Conn.) Pi Phi, a member of the American Dietetic Association, and the Public Health Association.



California Gamma alums at their big reunion last spring.

"Ring Ching" rings as alums gather

"Ring Ching Ching!" The California Gamma Pi Phis from 1964-1969 had a very special reunion luncheon last May, at the beautiful Corona del Mar home of Leslie Barnett Cies. Nearly eighty U.S.C. Pi Phis wearing arrows and smiles arrived in Orange County from all over the West to renew old friendships.

Wine and blue balloons decorated the pale blue tables and a delicious luncheon of chicken and salad assortment was served. The Pasadena Pi Phis brought the "Pi Phi Delight," a treasured house dessert recipe traditionally served on preference night during rush. After the

Cooky-Shine and pictures of individual pledge classes, they settled into reminiscent conversation. Some ladies brought old party pictures including some with Pi Phi "date" Tom Selleck!

Many Pi Phis went on to achieve graduate degrees. There were attorneys, dentists, artists, teachers, and homemakers raising families. This is a diversified group of women, but bound together by college experience and by the sisterhood of Pi Beta Phi. The day was a treasure that long will be remembered in the hearts of these old friends! Ring Ching!!



Three Pi Phis met and became fast friends during the summer when they were camp counselors in Michigan. From left, Jannifer Eichhorn, U. of Michigan, taught tennis; Erin Simpson, U. of Illinois, taught horseback riding; and Nancy Rehm, DePauw, was instructor in dance and arts and crafts.

Movie of week filmed in Boulder

Pi Phis at the University of Colorado at Boulder had first view of an ABC Movie of the Week that was filmed on campus and around Boulder. It was surprising to be hurrying to class and be held up by a production crew until a scene was finished.

The Los Angeles based crew was in town for twenty days, until Sept. 23, filming "Implied Force," starring Kathleen Quinlan. The subject matter involved Quinlan as a university professor coming to terms with sexual politics within the university. "Implied Force" was scheduled to be aired in November, after smooth filming around town.

Many extras were recruited for scenes at the campus recreation center, classroom buildings, and various Boulder homes.

Volunteer earns Hourglass Award

Barbara Knoll Wenzel, Northridge, Calif., California Delta, is one of three who earned Hourglass Awards at the 27th benefit of the Hilltoppers Auxiliary of Assistance League of Southern California last January.

Her sponsor for the philanthropic award was the National Charity League of San Fernando Valley, of which she is a former president.

Barbara originated the Ticktocker Convention for all chapters of National Charity League to discuss the value of volunteers in society. Two thousand Ticktockers attended the most recent convention at USC.

The mother of nine children and grandmother of six, Barbara has been women's council president of Our Lady of Lourdes Catholic Church in Northridge. She also is an active member of Gold Shield and Las Donas, support and honorary organizations of her alma mater UCLA.

New scholarship given

The first Loretta Snyder Legge Scholarship, presented by Indiana Gamma, was awarded to Kim Bryant for the 1982-83 school year.

The scholarship was made possible through the generosity of Ohio Beta alumna, Mrs. Snyder, who left the chapter \$10,000 to be used any way they desired.

She was a 1908 initiate and was a president of the Indianapolis Alumnae Club. The \$500 scholarship is awarded to an active member of the Butler chapter who has contributed good grades, good attitude, and service to the chapter.

Pi Phis take honors

Last semester at the Illinois State Panhellenic scholarship dessert, Pi Phi took top honors. Illinois Iota accepted awards for highest junior and senior class GPAs, and the highest house overall GPA.

In addition, Jackie Gustofson received a scholarship given to the pledge who was most outstanding for the semester.

In Memoriam

The following are given in sequence: Name, Chapter, Initiation Year, Month and Year of Death.

When submitting death notices to Central Office, please give month and year of death. Names cannot be listed without this information.

- Janet Van Nuys Abbett (Mrs. M. J.)
Indiana Alpha, 1911; September, 1983
- Jeannette M. Aitken
Pennsylvania Delta, 1925; March, 1983
- Dorothy Shoaf Bailey (Mrs. T. L.)
Colorado Alpha, 1918; July, 1983
- Florence Schwake Bates
Nebraska Beta, 1910; July, 1983
- Mary S. Bingham
Maryland Alpha, 1946; August, 1983
- Mary Redford Bircher (Mrs. John R.)
Missouri Alpha, 1922; August, 1983
- Dorothy Elberfeld Blevins (Mrs. B.)
Tennessee Alpha, 1928; April, 1982
- Elosia Coffin Bourke (Mrs. L. K.)
Iowa Gamma, 1921; July, 1983
- Helen Weinberg Browning (Mrs. F. E.)
Illinois Delta, 1912; June, 1983
- Irene Mars Buckalew (Mrs. Alman L.)
South Carolina Alpha, 1938; June, 1983
- Emily Sherwood Buckley (Mrs. John J.)
New York Alpha, 1925; January, 1982
- Theodora N. Bunce
New York Gamma, 1921; August, 1983
- Louise Shaff Carter (Mrs. I. N.)
Washington Alpha, 1911; July, 1983
- Elizabeth Smart Center (Mrs. C. C.)
Illinois Beta-Delta, 1931; June, 1983
- Hallie Barlow Olcott Chase (Mrs. W. C.)
Texas Alpha, 1921; May, 1983
- Margaret Daggett Clark (Mrs. R.)
Arkansas Alpha, 1928; July, 1983
- Helen Levegood Clarke (Mrs. Roy C.)
Pennsylvania Beta, 1909; June, 1983
- Lorraine Jenson Crane (Mrs. Rolland P.)
Utah Alpha, 1943; May, 1982
- Frances Cheshire Cole Daugherty (Mrs. J. E.)
Iowa Beta, 1924; August, 1983
- Carolyn Delaney
Michigan Alpha, 1931; August, 1983
- Vivian Beer Roberts deNeuf
Utah Alpha, 1934; March, 1983
- Joann Poos Dreyer (Mrs. Fred M.)
Indiana Delta, 1946; August, 1983
- Harriet Keen Dunlap (Mrs. A. Lee)
Pennsylvania Alpha, 1913; June, 1983
- Elsie Bender Edel
Maryland Alpha, 1913; July, 1983
- Frances Hawkins Estabrooks (Mrs. Roland)
Nebraska Beta, 1925; June, 1983
- Elizabeth Boyd Flanders (Mrs. Roger Lee)
Oklahoma Beta, 1923; March, 1983
- Cleo Millikan Hall (Mrs. Ellis B.)
Indiana Gamma, 1911; May, 1983
- Gloria Huffer Harrison (Mrs. J. I.)
Indiana Beta, 1943; May, 1983
- Thelma Scott Hartman (Mrs. Tom H.)
Illinois Eta, 1921; September, 1983
- Virginia Romney Hawkes (Mrs. Thomas F.)
Utah Alpha, 1921; July, 1983
- Jeannette Sheeche Helms (Mrs. Joseph O.)
Indiana Gamma, 1925; June, 1983
- Mary Randolph Hickam (Mrs. Hubert)
Wisconsin Alpha, 1921; June, 1983
- Beth R. Hoffman
Massachusetts Alpha, 1931; July, 1983
- Marjorie Myers Howard (Mrs. William L., Jr.)
Oklahoma Alpha, 1945; May, 1983
- Helen S. Illman
California Beta, 1918; May, 1983
- Claire Beckham John (Mrs. Robert P.)
D.C. Alpha, 1929; August, 1983
- Kathryn Pratt Johnston (Mrs. W. Ross)
Oklahoma Alpha, 1918; April, 1983
- Muriel Nickerson Jones (Mrs. Richard E.)
Wisconsin Beta, 1921; May, 1983
- Vivian E. Kelly
Illinois Delta, 1918; September, 1983
- Eleanor Handy Kenmore (Mrs. G. L.)
Colorado Alpha, 1918; May, 1982
- Mary Kennedy
Texas Alpha, 1930; September, 1983
- Julia Morse Kochitzky (Mrs. Otto, Jr.)
Missouri Beta, 1912; September, 1983
- Bess McMillan Kolb (Mrs. S. I.)
Oklahoma Alpha, 1910; August, 1981
- Mary Konkle Koopman (Mrs. J. J.)
Pennsylvania Beta, 1924; May, 1983
- Janet Johnson Lee (Mrs. Robert J.)
Michigan Gamma, 1948; July, 1983
- Lorna Josephson Lillis (Mrs. Dean F.)
Iowa Zeta, 1938; May, 1982
- Edna Hefner Limpus (Mrs. C. E.)
Florida Alpha, 1916; September, 1981
- Josephine Hamilton Lindley (Mrs. Emil S.)
Washington Beta, 1921; August, 1983
- Edna Jean Clark Lunney (Mrs. John H.)
Alberta Alpha, 1939; June, 1983
- Myra Egger McClanahan (Mrs. Alva)
Iowa Gamma, 1914; June, 1983
- Peggy Jones McClung (Mrs. Larry A.)
Oregon Beta, 1934; October, 1982
- Daisy Cuisinot McInnis (Mrs. Mac)
California Beta, 1973; June, 1983
- Frances Graham McMillan (Mrs. W. G., Sr.)
Texas Gamma, 1958; September, 1982
- Marjorie Daily Merritt
Indiana Alpha, 1942; April, 1983
- Char-Lou Howard Morgan (Mrs. G.)
Illinois Theta, 1947; August, 1983
- Mildred M. Moss
Arkansas Alpha, 1912; August, 1983
- Mary Elizabeth Milne Neighbors (Mrs. C. B.)
Wisconsin Alpha, 1924; October, 1982
- Martha Dewey Olinger (Mrs. Roy H.)
Illinois Eta, 1924; August, 1983
- Charlotte Maer Patton (Mrs. Adrian I.)
Texas Alpha, 1936; September, 1983
- Marion Campbell Pollard (Mrs. R. F.)
Illinois Delta, 1919; July, 1983
- Genevieve Thomas Porter (Mrs. W. S.)
Illinois Beta, 1925; July, 1983
- Carolyn Enos Potts
Maryland Alpha, 1914; September, 1983
- Blanche Day Richardson (Mrs. Harry)
Iowa Zeta, 1932; September, 1982
- Jane Demaree Richardson (Mrs. John M.)
Indiana Alpha, 1959; May, 1983
- Gabrielle Royal Robertson (Mrs. T. A.)
Iowa Zeta, 1931; August, 1983
- Margaret Wallace Ryan
Pennsylvania Beta, 1915; September, 1982
- Joan Armitage Sanders (Mrs. Robert)
Kansas Beta, 1947; June, 1983
- Ruth Haynes Sanderson (Mrs. Herb)
Florida Alpha, 1916; September, 1983
- Wilma Keel Saterstrom (Mrs. Palmer J.)
Idaho Alpha, 1925; August, 1983
- Dr. Maridel Saunders
Louisiana Alpha, 1925; June, 1983
- Alice Rock Smith (Mrs. David G.)
Illinois Zeta, 1923; March, 1983
- Althea Annett Maris Spidel (Mrs. Edward A.)
Montana Alpha, 1943; November, 1982
- Mildred Burnham Spottswood (Mrs. A. D.)
D.C. Alpha, 1929; August, 1983
- Esther Lippincott Stewart (Mrs. S.)
Pennsylvania Alpha, 1913; December, 1982
- Mary Off Stokes (Mrs. Harry)
Virginia Alpha, 1929; February, 1983
- Frances Mims Stratton
Florida Beta, 1925; June, 1982
- Grace Spain Sullivan (Mrs. L. D.)
Missouri Alpha, 1939; June, 1983
- Agnes Medsker Thompson (Mrs. C. K.)
Indiana Alpha, 1929; April, 1983
- Ruth Moore Truesdell (Mrs. H. A.)
Kansas Beta, 1918; September, 1983
- Dorothy Townes Van Zandt (Mrs. H.)
Texas Alpha, 1939; September, 1983
- Katherine Goodson Weakley (Mrs. Boyce W.)
Nebraska Beta, 1924; June, 1983
- Frances Newell Webb (Mrs. Harry J.)
Massachusetts Alpha, 1918; July, 1983
- Helen Westervelt Wheeler (Mrs. R. M.)
Illinois Eta, 1913; July, 1982
- Dorothy Rogers Williams (Mrs. Whiting)
Illinois Epsilon, 1915; March, 1983
- Lowene Barger Williams (Mrs. Newell F.)
Iowa Zeta, 1928; July, 1983
- Mary Virginia Quinn Williams (Mrs. Jack W.)
Colorado Beta, 1936; February, 1982
- Reeve Phares Williams (Mrs. George M.)
Colorado Alpha, 1925; July, 1983
- Geraldine Henning Willis (Mrs. John Howard)
Minnesota Alpha, 1924; December, 1982
- Kate Smith Wiseman
Arkansas Alpha, 1932; December, 1981
- Florence Scott Wood (Mrs. Richard L.)
Illinois Eta, 1929; June, 1983
- Nora Stabler Worth (Mrs. G. S.)
Pennsylvania Alpha, 1899; August, 1983
- Jane Sharp Yackee (Mrs. Robert L.)
Ohio Alpha, 1951; August, 1983
- Mathilde Villere Young (Mrs. Robert E.)
Louisiana Alpha, 1956; September, 1983
- Margaret Lanam Yount (Mrs. Russell)
Indiana Alpha, 1928; June, 1983

FRATERNITY DIRECTORY

WINTER, 1983

FORMER GRAND PRESIDENTS

Alice Weber Johnson (Mrs. Irwin T.) Box 337, Carmel Valley, CA 93924
Dorothy Weaver Morgan (Mrs. Kent R.) Box 186, Peru, NE 68421
Sarahjane Paulson Vanasse (Mrs. Horace) 3401 25th West, Apt. 520, Seattle, WA 98199
Elizabeth Turner Orr (Mrs. J. Gordon) 14800 SW 106th, Tigard, OR 97223

OFFICERS EMERITUS

Grand President Emeritus—Marianne Reid Wild (Mrs. Robert) 2021 Belmont Rd., NW, Washington, DC 20009
Grand Treasurer Emeritus—Olivia Smith Moore (Mrs. Henry, Jr.) 420 Pine St., P.O. Box 313, Texarkana, TX 75501

GRAND COUNCIL

Grand President—Jean Wirths Scott (Mrs. Jon) 1186 Cedarwood Dr., Moraga, CA 94556
Grand Vice President of Collegians—Adrienne Hiscox Mitchell (Mrs. Bruce T.) 165 Redwood Dr., Hillsborough, CA 94010
Grand Vice President of Alumnae—Lucy Baker Warner (Mrs. John R.) 21222 Endsley Ave., Rocky River, OH 44116
Grand Vice President of Philanthropies—Jane Houchens Tuten (Mrs. R. K.) 10561 Adventure Lane, Cincinnati, OH 45242
Grand Secretary—Carolyn Helman Lichtenberg (Mrs. Joseph M.) 6512 Anna Maria Ct., McLean, VA 22101
Grand Treasurer—Orpha O'Rourke Coenen (Mrs. Andrew G.) P.O. Box 8, Little Chute, WI 54140
National Panhellenic Delegate—Annette Mitchell Mills (Mrs. Jack P.) 2128 Vestridge Dr., Birmingham, AL 35216

DIRECTORS

Director of Academic Standards—Charleen Meyer Dobson (Mrs. Bob L.) 2212 Indian Trail, Jonesboro, AR 72401
Director of Alumnae Activities—Marion Swanson Oster (Mrs. R. J.) 38 Flood Circle Atherton, CA 94025
Director of Alumnae Advisory Committees—Jeanie Hester Hillis (Mrs. Richard) 50 Berkeley Ave., Orinda, CA 94563
Director of Alumnae Records—Carol Inge Warren (Mrs. Richard J.) 5439 Cascade Dr., Lisle, IL 60532
Director of Chapter House Corporations—Barbara Varner Frizell (Mrs. E. E. II) 2609 Heather Parkway, Hutchinson, KS 67501
Director of Extension—Maralou Juday Crane (Mrs. E. Clifford) 625 Marview Terrace, Cincinnati, OH 45231
Director of Membership & Rush—Judith Davis Whitacre (Mrs. H. M., Jr.) 455 S. Beverly Ln., Arlington Heights, IL 60005

Director of Pledge Development—Kate Gilbert Phifer (Mrs. Arden) 1910 W. Woodbury Lane, Milwaukee, WI 53209
Director of Undergraduate Activities—Robin Long Jensen (Mrs. Ron R.) 1415 CTH-A, Rt. 1, Edgerton, WI 53534

APPOINTED NATIONAL OFFICERS

Editor of The ARROW—Marilyn Simpson Ford (Mrs. William W., Jr.) 268 Underwood Dr., NW, Atlanta, GA 30328
National Fraternity Historian—Barbara Sands Olsen (Mrs. James C.) 30965 Clinton, Bay Village, OH 44140
Supervisor of Chapter Histories—Karen Schwab, 2 Brannen St., #3, McDonough, GA 30253
National Convention Guide—Mary Kahlenberg Schroeder (Mrs. Alan) 4284 Woodland Shadows Place, Santa Rosa, CA 95404

SPECIAL OFFICERS

Traveling Graduate Counselors—Carol Biglow, Katie Hale, Martha Hughey, Leslie Zeller, Pi Beta Phi Central Office, 7730 Carondelet, Suite 333, St. Louis, MO 63105
Parliamentarian—Carrie-Mae MacNair Blount (Mrs. R. J.) 7712 Pickard NE, Albuquerque, NM 87110
Elections Coordinator—Jan Threlkeld Moore (Mrs. Thomas W.) 3101 E. Coolidge, Phoenix, AZ 85016

PI BETA PHI CENTRAL OFFICE

Director—Virginia Bland Fry (Mrs. Hugh L.) Pi Beta Phi Central Office, 7730 Carondelet, #333, St. Louis, MO 63105
Assistant to the Grand Treasurer—Bonnie Estabrook (Mrs. William J.) Pi Beta Phi Central Office, 7730 Carondelet, #333, St. Louis, MO 63105
Chapter Finance Director—Ann Templeman Felsted (Mrs. Robert) Pi Beta Phi Central Office, 7730 Carondelet, #333, St. Louis, MO 63105

FRATERNITY INSURANCE REPRESENTATIVE

Alexander & Alexander, 130 East Randolph Drive, Chicago, Illinois 60601

NATIONAL BOARD OF TRUSTEE FUNDS

Chairman—Orpha O'Rourke Coenen (Mrs. Andrew G.) P.O. Box 8, Little Chute, WI 54140
Jean Wirths Scott (Mrs. Jon) 1186 Cedarwood Dr., Moraga, CA 94556
Elizabeth Turner Orr (Mrs. J. Gordon) 14800 SW 106th, Tigard, OR 97223
Esther Barrager Douglass (Mrs.) 4881 Old Post Circle, Boulder, CO 80301
Jean Lewis McReynolds (Mrs. Lewis) 3801 Austin Ave., Waco, TX 76710

Chairmen of Standing Committees

Budget and Finance Committee—Orpha O'Rourke Coenen (Mrs. Andrew G.) P.O. Box 8, Little Chute, WI 54140
Canadian Philanthropies Committee—Lois Badgley Laycraft (Mrs.) Box 89, Paddockwood, SK S0J 1Z0, Canada
The Chain—Director of Alumnae Activities—Marion Swanson Oster (Mrs. R. J.) 38 Flood Circle, Atherton, CA 94025
Alumnae Committee for Continuing Education—Jane Purlee Shirley (Mrs. Jack E.) 9444 Highedge Dr., Dallas, TX 75238
Convention Committee—Athelia Sweet Clingan (Mrs. M. H.) 5345 Mission Woods., Shawnee Mission, KS 66205
Emma Harper Turner Memorial Funds Committee—Madeleine Closs Lafon (Mrs. Thomas H.) 7045 Maryland, St. Louis, MO 63130
Holt House Committee—Anne Travis O'Connell (Mrs. Robert F.) 354 E. Bodley St., St. Louis, MO 63122
Holt House, 402 E. 1st Ave., Monmouth, IL 61462
House Director Committee—Director of Chapter House Corporations—Barbara Varner Frizell (Mrs. E. E. II) 2609 Heather Parkway, Hutchinson, KS 67501
Idea Bank Committee—
Academic Programming—Director of Academic Standards, Charleen Meyer Dobson (Mrs. Bob L.) 2212 Indian Trail, Jonesboro, AR 72401
Membership and Rush Programming—Director of Membership and Rush, Judith Davis Whitacre (Mrs. H. M., Jr.) 455 S. Beverly Ln., Arlington Heights, IL 60005

Pledge Programming—Director of Pledge Development, Kate Gilbert Phifer (Mrs. Arden) 1910 W. Woodbury Lane, Milwaukee, WI 53209
Active Chapter Programming—Director of Undergraduate Activities, Robin Long Jensen (Mrs. Ron R.) 1415 CTH-A, Rt. 1, Edgerton, WI 53534
Legislative Committee—Joyce Teir Hosford (Mrs. C. S.) 3604 Main St., P.O. Box 223, Barnstable, MA 02630
Loan Fund Committee—Joan MacBain Stettler (Mrs. Wayne D.) 16 Huron Dr., Chatham, NJ 07928
Music Committee—Marilyn Marrs Fallin (Mrs. Jerry W.) 12416 Balwyck Ln., St. Louis, MO 63131
Nominating Committee—Lucille McCrillis Ryland (Mrs. John) 3470 E. Kentucky Ave., Denver, CO 80209
Settlement School Committee—Jane Roth Faust (Mrs. Norman) 16 Normandy, Little Rock, AR 72207
Director, Arrowmont School of Arts and Crafts—Sandra Blain, Arrowmont, Box 567, Gatlinburg, TN 37738
Administrator, Business/Property—Mr. Robert Skinner, Box 567, Gatlinburg, TN 37738
Program Coordinator for Arrowmont—Miss Clare Versteegen, Box 567, Gatlinburg, TN 37738
Arrowcraft Coordinator—Janet Skidmore Skinner (Mrs. Robert), Box 567, Gatlinburg, TN 37738

Official CALENDARS

WINTER, 1983

COLLEGIATE CHAPTERS

Consult Fraternity Directory in the fall issue for addresses of National Officers
Central Office address is: 7730 Carondelet, Suite 333, St. Louis, Missouri 63105

All due dates are to be postmarked dates.

PRESIDENT:

- Within one month of installation date, write Province President of goals and plans for the year. (Copy to AAC Chairman)
- Send a copy of the Chapter Statistical Report to your Province President as soon as possible after school begins.
- Before September 1, send copy of summer letter to chapter members to Province President. (Copy to AAC Chairman)
- September 25—Arrange for fire inspection of premises by local authorities.
- Send monthly letter to Province President postmarked not later than the 10th of each month, October through May. (Copies to AAC Chairman, any scheduled visiting national officer.)
- November 1—Beginning of Chapter Officer Election Period. Elect three alumnae members to AAC at the same time chapter officers are elected.
- November 1—Send Fire Protection Affidavit or explanation of unavoidable delay in sending it to Director of Chapter House Corporations.
- November 15—Send annual Alcohol Questionnaire to Director of Alumnae Advisory Committees.
- February 15—Final date for chapter nomination for Amy Burnham Onken Award; send letter of nomination to Province President.
- February 15—AAC of each chapter in province send in its nomination for the Chapter Service Award to the Province President.
- April 20—Final date for election of chapter officers.

SECRETARY:

- Send active IBM Membership List back to Central Office as soon as possible after receipt.
- Notify Province President and Central Office *immediately* when changes in chapter officers are made.
- Send initiation certificates to Central Office within three days after initiation. Coordinate with chapter treasurer who must send GT-1 form with the initiation fees.
- October 15—Send House Director data blank to Chairman of Committee on House Directors.
- November 15—Send a copy of the chapter bylaws to the Province President and a copy to the Alumnae Advisory Committee Chairman.
- November 15—Send name and address of president of Mother's Club to Central Office.

TREASURER:

- Send Financial Statements to Parents of Pledges who have been approved for initiation two weeks before the proposed initiation date.
- Send to Central Office:
 - Annual Budget Form BC-1 just as soon as it is prepared at the beginning of the fall school term. Do not wait until you send your first report.
 - Pledge and/or repledge fees with GT-1 form within two weeks after any pledging or repledging ceremony. If possible coordinate with the Vice President of Social Advancement who must send the pledge list.
 - Initiation fees with GT-1 form within three days after each initiation ceremony. Coordinate with the Secretary who must send the initiation certificates.
 - Copy of Form 941—Employer's Quarterly Federal Tax Return (chapters having employees).
 - Copy of Workman's Compensation Certificate of Insurance by November 1st.
- July through April—Monthly financial report on due dates in accordance with Treasurer's Manual to Central Office.
- September 10—Send Annual Balance Sheet to Central Office.
- September—Send letter from Grand Treasurer and local letter on chapter finance (previously approved by Province President) to parents of actives and pledges as soon as school opens. Not necessary for parents of pledges if final page of the booklet sent to them is filled in.
- October 20—Send national dues of \$10.00 per active member to Central Office on GT-1 form listing members' names and initiation numbers. If initiated after due date member should pay national dues with initiation fees.
- January 15—Senior Application Blanks and Senior Dues for midyear graduates to Central Office.
- January 20—Send national dues of \$10.00 per active member to Central Office on GT-1 form listing members' names and initiation numbers.
- April 15—Send Senior Blanks and Senior Dues for spring or summer graduates to Central Office.
- By May 20—Contributions made payable to Pi Beta Phi Central Office for Harriet Rutherford Johnstone Scholarship Fund, Convention Hospitality Fund, Settlement School (Arrowmont), Holt House, and Arrow in the Arctic.

MEMBERSHIP CHAIRMAN:

- Send to Central Office within ten days after *any* pledging Rush Information Forms with proper signatures for each girl pledged.
- Send Chapter Report of Pledges form to the Rush Information Chairman of the alumnae club concerned within ten days after any pledging.
- Send to Central Office the name and address of newly elected Chapter Membership Chairman on postcard provided in spring.
- Send the Membership/Panhellenic Rush Report, prepared jointly with the Panhellenic Delegate, to the Director of Membership and Rush and the NPC Delegate within ten days of each formal rush. Copy to Province President.

PANHELLENIC DELEGATE:

- As available—send copy of Panhellenic Rush Booklet to NPC Delegate.
- Send the Membership/Panhellenic Rush Report, prepared jointly with the Membership Chairman, to the Director of Membership and Rush and the NPC Delegate within ten days of each formal rush. Copy to Province President.
- April 15—Final date for Spring Panhellenic Report to NPC Delegate.

VICE PRESIDENT OF MORAL ADVANCEMENT:

- Within one month after installation (deadline: May 1), send a report listing and explaining chapter goals in all areas of Moral Advancement (including philanthropies) for the coming year to the Director of Undergraduate Activities. Also send written program for Fraternity heritage. Copies to Province President and AAC Chairman.

One month before term of office expires, send overall evaluation of achievements in all areas of Moral Advancement (including philanthropies) to Director of Undergraduate Activities. Copies to Province President and AAC Chairman.

Within first 2 weeks of each term—Conduct Member Interest Survey of *personal* and *chapter* needs and goals. (Will determine special interest groups and activities for each term.) Send to Executive Council for chapter action and for inclusion in monthly letter to Province President.

February 15—Final date for Active Evaluation. Whenever total number for active chapter is complete send to Province Coordinator for Fraternity Excellence with Form 305 and list of signatures. Evaluations must be received by the Province Coordinator by the February 15 deadline.

NOTE: Fraternity Heritage Interest Group should first review each essay for ideas of immediate value and use to chapter and submit a written summary to Executive Council and AAC *before* sending all evaluations on to Province Coordinator. A copy of the summary is to be included with the active evaluations to be sent to the Province Coordinator.

April 1—Music Report, send to National Music Chairman.

April 30—Send entry for May L. Keller Award to Chairman, Arrowmont Board of Governors.

VICE PRESIDENT OF SOCIAL ADVANCEMENT:

Within one month after installation (deadline: May 1), send a report listing and explaining chapter goals in all areas of Social Advancement for the coming year to the Director of Pledge Development. Copies to Province President and AAC Chairman.

One month before term of office expires, send overall evaluation of achievements in areas of Social Advancement to Director of Pledge Development. Copies to Province President and AAC Chairman.

Send Evaluation of Rush Report within 2 weeks of close of rush to Director of Membership and Rush. Copy to Province President.

Send List of Pledges with parents' names & addresses within ten days of pledging to Central Office, Province President, and Province Coordinator.

Send letter to parents of pledges, *after* it has been approved by Province President within 2 weeks of pledging.

Send Pledge Evaluations 3 weeks before initiation to Province Coordinator for Fraternity Excellence with Form #205.

NOTE: The Fraternity Orientation Interest Group, *meeting with the AAC*, is to review each pledge's written evaluation and compile pertinent information *before* sending all evaluations on to the Province Coordinator.

Send Fraternity Orientation Questionnaire to Director of Pledge Development 10 days prior to initiation. Copy to Province President.

VICE PRESIDENT OF MENTAL ADVANCEMENT:

1. *Goals and Evaluation*

Within one month after installation (deadline: May 1), send a report listing and explaining chapter goals in all areas of Mental Advancement for the coming year to the Director of Academic Standards. Copies to Province President and AAC Chairman.

One month before term of office expires, send overall evaluation of achievements in all areas of Mental Advancement to Director of Academic Standards. Copies to Province President and AAC Chairman.

2. *Academic Excellence*

Chapter Scholarship Blank, October 1—spring semester or quarter, annual; March 1—fall semester or quarter; May 1—winter quarter; send to Director of Academic Standards. Copies to Province President, AAC Chairman.

Individual Scholarship Blank—before March 15 to Central Office.

Individual Academic Goal Cards stay within the chapter, but serve as the basis for Chapter Scholarship Blank and for the term evaluation of the vice president. Their use is strongly urged for all members, and especially for pledges.

3. *Publications*

Idea Bank Contributions—send to those national Directors listed under Idea Bank, fall issue of *ARROW*.

July 1—for fall *ARROW*: Chapter Annual Report. News, features, pictures. Send to Editor of *The ARROW*.

September 16—for winter *ARROW*: Pictures of Mortar Boards, Phi Beta Kappas, *Who's Who*, ODKs, honor graduates. News, features, pictures.

January 4—for spring *ARROW*: News, features, pictures. Pictures of Campus Queens. Send to Editor of *The ARROW*.

February 1—carbon of first half of Chapter History to Supervisor of Chapter Histories.

March 23—for summer *ARROW*: List of initiates for the year. News, features, pictures. Pictures of Fraternity Sweethearts.

May 15—Carbon of second half of Chapter History to Supervisor of Chapter Histories.

PLEDGE SPONSOR:

October—Send Grand Treasurer letter and chapter letter (previously approved by Province President) to parents of pledges as soon after pledging as possible.

January 15—Those with deferred pledging send Grand Treasurer letter and chapter letter to parents of pledges.

APPLICATION FOR FELLOWSHIP, SCHOLARSHIPS, AND LOANS:

Blanks and information on how to make application may be obtained from Central Office.

January 15—Letter of Application for Pi Beta Phi Fellowship due to Grand President.

January 15—Application for Harriet Rutherford Johnstone Scholarship, Ruth Barrett Smith Scholarship, Junior Alumnae Group Scholarship, Frances Hall Comly Scholarship, Louisiana Alpha Triple M Scholarship due to Grand Secretary.

January 1 to March 15—Scholarships and Assistantships to Arrowmont. Write to Arrowmont, Box 567, Gatlinburg, Tennessee 37738.

Virginia Alpha Scholarship and Brendel Scholarship write to: Arrowmont, Box 567, Gatlinburg, Tennessee 37738.

ALUMNAE

Due dates for reports are to be postmarked dates. Consult Fraternity Directory Fall Issue for names and addresses of National Officers.

PRESIDENT:

October 5—Copy due to Editor of *The Chain*.

November but not later than March 15—Elect Alumnae Club Rush Information Committee Chairman and appoint at least 2 other members to serve from March 15 to March 15 of following year.

November 1 to April 20—Elect two members of the AAC to coordinate with the election of chapter officers. AAC members are to be installed when elected.

January 4—for spring *ARROW*: News, features, pictures. Send to Editor of *The ARROW*.

January 5—Copy due to Editor of *The Chain*.

February 1—Election of club officers to be held no later than March 31, said officers to take office at the close of the fiscal year.

February 1—Evelyn Peters Kyle Angel Award Committee deadline date for sending its nomination to its Alumnae Province President. (Convention year only.)

March 23—for summer ARROW: News, features, pictures. Send to Editor of The ARROW.
March 31—Send name and address of Rush Information Chairman to Central Office on postcard provided so that it will appear in Rushing Directory of summer ARROW. If not received name of Club President will be listed.
April 5—Copy due to Editor of *The Chain*.
April 15—Send two copies of Annual Report Evaluation to the Alumnae Province President.
May—Installation of new officers at regular club meeting.
July 1—for fall ARROW: News, features, pictures. Send to Editor of The ARROW.
September 16—for winter ARROW: News, features, pictures. Send to Editor of The ARROW.

CORRESPONDING SECRETARY:

Must be recipient of The ARROW.
September 25—Send In Memoriam notices to Central Office for Winter ARROW.
November 10—Mail 2 copies of club year book or program roster with program plans (page 23 of club President's Notebook) to the Alumnae Province President.
January 15—Send In Memoriam notices to Central Office for Spring ARROW.
March 30—Send new officer list to Alumnae Province President and Central Office.
April 1—Send In Memoriam notices to Central Office for Summer ARROW.
April 12—Send letter with club news to Alumnae Club Forum Editor.
July 10—Send In Memoriam notices to Central Office for Fall ARROW.

TREASURER:

Send national dues and receipts to *Central Office* as collected throughout the year.
May 20—*All*—dues and donations of funds should be mailed to Central Office by this date in order to count for current year.
Pi Beta Phi Settlement School (Arrowmont)
Holt House
Convention Hospitality
Harriet Rutherford Johnstone Scholarship Fund
Junior Group Scholarship
Emma Harper Turner Memorial Fund
Arrow in the Arctic
Make club check covering total contributions payable to Pi Beta Phi Central Office. Check must be accompanied by GT-2 Form showing club's apportionment to desired funds.
June 30—Send review cards as directed.

RUSH INFORMATION CHAIRMAN:

Winter—Review with Rush Information Committee areas to be listed in Summer ARROW. Send any changes in club area listings to Central Office no later than March 31st.
March 15—Send report to Alumnae Province President.

HOUSE CORPORATION TREASURERS:

September—Send annual reports to Director of Chapter House Corporations. Copy to Province President.

ALUMNAE ADVISORY COMMITTEES

November 15—In areas with a chartered Alumnae Club, Chapter Advisory members must be paid members of that club by this date.
In areas with no chartered Alumnae Club, the Chapter Advisory members must pay National alumnae dues to Central Office by this date.
November 1—April 20—Time period for election of Chapter Advisory members, with election to correspond with that of chapter officers.
Following election of Chapter Advisory members, send current list of Advisory members to Central Office on form provided, even if there are no changes.



Indiana University Pi Phis held their first annual retreat on a beautiful end-of-the-summer Saturday in September and nearly 70 Indiana Betas gathered at Brown County State Park. The day included officer presentations, small group discussions, and an opportunity for pledges and actives to get to know one another. (Photo: Roxanne Butler)



Pi Phi collegians aren't the only ones who travel the world these days. Midland, Texas, alumnae Nancy Steadman Hill, Linda George, and Katie Atkinson Heck (l-r) are pictured at the Manor House Hotel in Moreton-in-Marsh, England, after a fascinating evening with "Julius Caesar" at Stratford.



Texas Beta Pi Phis Laurie Harjo and Suzanne Hebert are sitting pretty as they prepare to ride in style to the pep rally. Laurie is a pom pon girl and Suzanne is a cheerleader for the SMU Mustangs.



Louisiana Beta angels Jayne Laird, left, and Michelle LeBlanc model their hairstyles for a local hair salon in Baton Rouge. Their pictures have appeared on several billboards for the promotion of the salon.



Cornell Pi Phi Laura Armstrong, with her "boss" Smokey Bear, spent her summer as a Forest Service naturalist at Lake Tahoe, Calif. Her activities included staffing a visitor center, leading boat tours and children's nature activities, and presenting evening campfire programs.



The first sorority house on the LSU campus was built in 1965 for Louisiana Beta. In 1983, thanks to the efforts of chapter, house corporation, and other alumnae, the house has a new front porch, walkway, and landscaping. The new facade was an exciting addition to rush this fall.



Taking a break from the legislation and workshops which made their trip to the Pi Phi Convention so memorable, eight California Deltas boarded the Belle of Louisville for a slow journey down the Ohio River. All eight demonstrated their pride in the Pi Beta Phi Circle of Friendship.



What a coincidence! These two Arkansas Alpha pledges, Laura Huffman and Molly Jones, discovered during rush that their mothers had been in the 1957 Pi Phi pledge class together at the University of Arkansas.



Erin Bell and Carol Ann Williamson, Florida Alphas, enjoy themselves while working on plans for their fall rush at Stetson. Erin is chapter membership chairman.



Maeve Vissar, Oregon Gamma junior, takes the Pi Phi spirit to the dorms at Willamette University as a residence assistant. The selection process for residence staff takes well over six months and includes a week of training.



Robin Stephens, Mississippi Alpha, was named Greek Goddess after the chapter, teamed with Alpha Phi Alpha, became Greek Games champions.



Colorado Gamma's friendly bears made their appearance during the Safari rush party at Colorado State. Sara Jones, Karen Spicer, Krista Tushar, Stacey Doan, Shelly Clough, and Anne Hart helped show rushees that Pi Phis are "friends you need."



Karen Osowski, Indiana Zeta, has received a number of special awards during her collegiate career, including the Mabel Dooks Hurst Award for chapter service/scholarship; Ball State Palmer Music Scholarship; Judith F. Rice Memorial Award from Indiana Zeta; Outstanding Sophomore Award, Theta Province, 1982; and is a member of Order of Omega, Greek honorary.



Connecticut Alphas, University of Connecticut, display a framed banner presented at Founders' Day by the New Haven Alumnae Club. The banner originally belonged to Esther Stanley Humphrey, Vermont Beta, mother of New Haven alum Sally Humphrey Jaynes. Holding the banner are Suzanne Sutton and Debbie Grosskopf. Middle: Janice Morrison, Elise Gelfand, Barb Dowbekin, Susan Hagerty. Seated: Tamara Cohen, Jamie Sabia, Bari-Sue Glaser.



Pi Phi Robin Johnston, University of Virginia, and Christi Gleason, Colorado State, met while being camp counselors last summer. They both agreed it was great fun to meet a sister from across the U.S.A.



Maryellen Farmer, left, and Demetra Yeapanis, Virginia Gammas, have been appointed President's Aides for the school year 1983-'84 at William and Mary. 19 students, including another Pi Phi, Mary Kosko, are chosen annually to serve as an advisory group to discuss campus issues. They are also official hosts for the college.



Louisiana Alphas Ann Sellman and Renee George cheer for Pi Phi at the annual Sigma Chi Derby Week games at Newcomb. The chapter placed second this year.

Two New Mexico Betas, Rae Ann McMahon and Julie Steputis, have been capped and received their LPNs after completing their first year in Nursing School at NMSU.



HAVE YOU MOVED OR CHANGED YOUR NAME?

Mail this slip to the PI BETA PHI CENTRAL OFFICE,
(Please leave label on reverse side when mailing this form.)
7730 Carondelet, Suite 333, St. Louis, Missouri 63105

MARRIED NAME
(Print Husband's Full Name, Please)

MAIDEN NAME

FORMER MARRIED NAME (if applicable)

OLD ADDRESS

Street

City

State (Include Zip Code)

NEW ADDRESS

Street

City

State (Include Zip Code)

Chapter Date of Initiation

campus



sights and sounds

A SPORTS psychologist has been named at the University of Illinois. He is believed to be the first full-time psychological counselor hired by a major university.

GAMMA PHI BETA and Pi Kappa Alpha at Purdue held a 24 hour "jumpathon" which raised \$1,750 to help finance a new cancer ward at a local hospital.

SUMMER STUDENTS at the University of South Carolina attended two-hour classes four days a week instead of the usual 90-minute classes on five days. By shutting off air conditioning in classrooms and offices from Thursday afternoon until Monday morning, the university expected to save \$150,000. The students liked the long weekends at home, at the beach, or time for doing research.

DELTA TAU DELTA at Bethany College (W. Va.) raised more than \$2,000 for the Crippled Children's Society through a 24 hour relay, logging 214 miles around the track.

IBM will give \$40 million worth of computers to 20 universities in an effort to insure that graduate students in engineering are familiar with the latest technology in manufacturing and design. Another \$10 million for planning new engineering curricula will be awarded to five universities. (*Chronicle of Higher Education*)

PERHAPS the largest literary prize, \$35,000, was awarded by Washington College (Md.) to a graduating senior "having the best ability and promise for future fulfillment in the field of literary endeavor." The funds derive from a \$506,000 bequest

from the late author Sophie Kerr Underwood who stipulated that half of the annual interest should go to the award.

THETA CHI and Zeta Psi members at Worcester Polytechnic (Mass.) patrol the neighborhood nightly from 11 p.m. to 6 a.m. as a crime watch service. Break-ins and vandalism had been frequent in the area which includes many elderly residents of apartment houses. Since the program began, there hasn't been a break-in, theft, or vandalism. Goodwill has greatly increased with neighbors sending cooked "goodies" to the fraternities. (*Chronicle*)

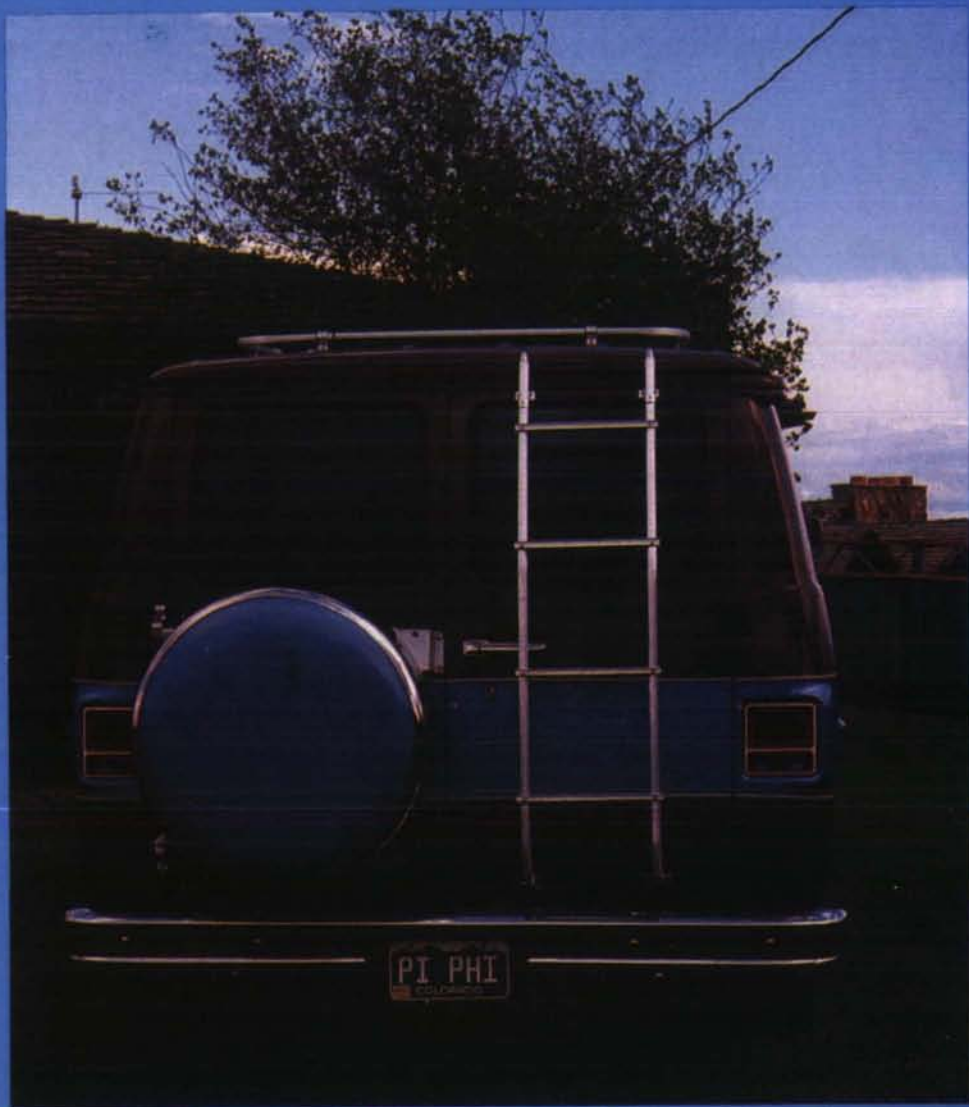
A NEW GRADUATE program at Emory University will grant joint degrees in business administration and theology. The idea is to get some market economics into church administration. (*Wall Street Journal*)

CHARLTON HESTON has donated his collection of memorabilia to the UCLA Theater Arts Library. Included are scripts, scrapbooks, posters, awards, and autographed photos from Cecil B. DeMille. (*UPI*)

PLAY DAY. Sigma Phi Epsilon members at the University of Missouri/Rolla spent an afternoon playing with children at the Rolla Cerebral Palsy School. The school was one of the recipients of proceeds from the Greek Week Carnival which raised money through booths, games, and races.

—Compiled by Mrs. George Rudolph,
editor of The Trident of Delta Delta Delta,
for the National Panhellenic Editors Conference

Postmaster: Please send notice of Undeliverable copies on Form 3579 to Pi Beta Phi, 7730 Carondelet, Suite 333, St. Louis, Missouri 63105.



Everyone on the University of Colorado campus should know by now that this van belongs to a Pi Phi (see front cover). But just in case it slips by without anyone noticing, it's all spelled out on the rear license plate.

To Pi Phi Parents:

Your daughter's magazine is sent to her home address while she is in college and we hope that you enjoy reading it. If she is no longer in college, however, and is not living at home, please send her new permanent address to Pi Beta Phi Central Office, 7730 Carondelet, Suite 333, St. Louis, Missouri 63105.