

The **Arrow**  
of Pi Beta Phi

Spring • 1998

**A B C's**  
&

**1 2 3's**

of Risk Management

# Perspective



## Straight Talk About Risk Management

After trying for several hours to write this "perspective," I realized that the root of my writer's block was that I wanted to say different things to different groups in our audience. So ...

### **Dear Parents,**

First of all, I want you to know that as the vice president who has the responsibility for our collegians, I care about your daughter with every fiber of my being. Furthermore, I can assure you that other Pi Phi alumnae who join me in our volunteer jobs share my feelings. Very honestly, working with college students is more challenging today than when I started years ago as a chapter adviser. You could stay up all night every night worrying about our young people—however, you could also become an insomniac if you let the 6 o'clock nightly news "get to you." As you read this issue on risk management, I hope you realize Pi Phi is making every effort to ensure that your daughter has a wonderful, rewarding, meaningful and safe sorority experience. We appreciate your support of her sorority membership.

### **Dear University Administrators,**

I hope that as you read the enclosed articles you are assured that we join you in your concern about risk management issues. We have tried to bring together an effective program, which includes a comprehensive Risk Management Educator Manual (compiled by Michelle Goseco, our Risk Management Officer). If you do not have a copy and would like one, please call our Central Office at (314) 727-7338. We realize that many of your jobs continue 24 hours a day, and we appreciate all you are doing on your campus to promote the safest environment possible for your students.

### **Dear Pi Phi Alumnae,**

Yes, you need to read the following articles. Yes, the campus environment has changed—so too has the world that surrounds the campus. Yes, our chapter members do have issues to deal with that we never imagined, e.g. date rape drugs. Yes, it is "hazing" to require pledges to get paddles signed. Yes, the support of Pi Phi sisters is just as relevant today, if not more so, as it was when you were in school. Thank you for your life-long involvement as is evident by your reading this magazine.

### **Dear Pi Phi Collegians,**

I realize you do not need any other "outside reading," but please read pages 4 through 8. One of the most wonderful and rewarding aspects of working with you is that young people have such a positive outlook—you are inspiring, challenging and fun. You think "it will never happen to me." When my phone rings with the terrible news that there has been a death of one of our chapter members, I ask myself

how can we convince our collegians that it can happen to them. I am going to thank you in advance for doing two things:

- Practice what our ritual, ceremonies and ideals are founded upon—take responsibility for each other.
- Care enough to confront each other. A sister will not change her behavior if she does not think it needs to be changed.

### **Dear Readers,**

The authors of the risk management articles are special friends whose professional and volunteer experiences keep them current with risk management issues (see below). I hope you will take time to read their wise words.

—**SARAH RUTH "SIS" MULLIS,**  
GRAND VICE PRESIDENT OF COLLEGIANS

### **About the Authors**

**CALIFORNIA ETA MICHELLE MURRELL GOSECO** is the Fraternity's Risk Management Officer. She has been a Traveling Graduate Consultant and a Collegiate Province President. She is the Deputy District Attorney for Orange County, California.

**PENNSYLVANIA BETA JEAN WIRTHS SCOTT** served the Fraternity on Grand Council for 12 years, six as Grand President. Jean has been a delegate to the National Panhellenic Conference since 1985 and served as chairman from 1995 to 1997.

**TIMOTHY M. BURKE** is a partner in the Cincinnati, Ohio, law firm of Manley, Burke, Lipton & Cook. Tim has served as general counsel to Pi Beta Phi for more than 15 years.



# Contents

Volume 114 • Number 3

## Features

- 4** Reviewing the basic rules, policies and procedures of risk management is as easy as ABC.
- 13** Pennsylvania Kappa's installation brings the Fraternity's Roll Call to 132 collegiate chapters.
- 24** Rush information includes chapter addresses and Rush Information Form.

# ABC'S

## of Risk Management

4

## Departments

From the Reader	9
News from Arrowmont	10
Pi Beta Phi Foundation	12
Links to Literacy	14
Collegiate News	16
NPC Update	22
Directions	30
Fraternity Directory	32
Alumnae News	34
In Memoriam	39
Internet	42
Fraternity News & Notes	43
Burr, Patterson & Auld	45
Pi Phi Express	46



16



42

[www.pibetaphi.org](http://www.pibetaphi.org)

3



“Fraternities and sororities are ranked just below asbestos contractors and hazardous waste disposal companies as the highest liability risks ...”

## ABC's & 123's of Risk Management

A child's education begins with basics—building blocks for future accomplishments. She must learn her ABC's before composing poetic stanzas and her 123's before studying quantum physics.

Similarly Pi Phi collegians must learn the basic rules, policies and procedures of risk management before our chapters can become havens for the moral, mental and social advancement on which Pi Beta Phi was founded.

### The Basics

*Risk Management Insight*  
by Michelle Murrell Goseco

Risk management has become a major concern and focus on virtually every college and university campus. Many campuses have their own set of risk management rules, policies, programs and officers. Risk management has been a major emphasis of chapter programming for all National Panhellenic Conference and National Interfraternity Conference groups. Pi Beta Phi is no exception. We have taken an active role in risk management programming and education of our collegiate and alumnae members. Hopefully, the following information will give you an insight into this area called “risk management.”

### What is Risk Management?

Risk management is just what it implies—management of risks. It involves legal liability issues. Under the large umbrella of risk management, there are many different areas including: alcohol awareness and abuse, haz-

ing, sexual abuse and assault, substance abuse, house maintenance and safety, health issues such as eating disorders and AIDS, and personal safety and security issues. It includes responsible social event planning to ensure that chapter social events follow all risk management procedures and all applicable laws.

Risk management is not a new concept. For years we have learned about and followed risk management policies and procedures—we just didn't have the all-encompassing label of “risk management.” Underage drinking, alcohol abuse and hazing—the most common issues—have been around for a long time. Eating disorders and the new date rape drugs are current issues that many of our alumnae did not encounter during their college years.

### Why is it Important?

The focus and emphasis on risk management in recent years has come out of necessity. Many activities that used to be accepted as a part of the normal fraternity/college experience are no longer acceptable, because they are illegal or entail too great a risk. The high cost of liability insurance is a major reason for the prevalence of risk management. Fraternities and sororities are ranked just below asbestos contractors and hazardous waste disposal companies as the highest liability risks—an amazing and sad statistic. Many insurance companies are imposing strict guidelines on fraternities or are refusing coverage altogether. If our risk management policies and procedures are not followed exactly, we may be jeopardizing our insurance coverage. And, of course, there are the legal consequences.

Civil suits seek monetary damages and may implicate individual chapter

members, the chapter, alumnae advisors, house corporation, and even the international Fraternity. Criminal charges and penalties may also apply.

Education is the key to managing our risks and making the fraternity experience memorable and safe for our collegians. Education is important because individuals need to know not only what the rules are but also the potential consequences for not following the rules.

Not following risk management policies and procedures can have serious and far-reaching implications not just to the individuals involved, but the chapter and the international Fraternity. It also has an impact on the entire Greek system. Collegians need our guidance and support now more than ever. They are facing incredible challenges and having to deal with these serious issues.

### How is Pi Beta Phi Managing Risk?

- Pi Beta Phi's risk management policies are included in the Policy and Position Statements and the Constitution and Statutes.
- After the 1995 Palm Desert Convention, Grand Council created the Fraternity Risk Management Officer to oversee risk management programming, education and special assistance to chapters. As the Fraternity's Risk Management Officer, I have attended convention, leadership seminars, and officer training workshops presenting various programs on risk management. This summer's collegiate leadership seminars will once again highlight risk management. I have presented risk management workshops to individual chapters and assisted them in creating and developing risk management programs. I have also worked with NPC on their risk management program



"Something of Value," which brings an intensive two-day risk management seminar to college campuses and includes a mock trial in which students observe and participate.

- Each Pi Beta Phi chapter has a risk management officer—the Risk Management Educator. The RME falls under the Vice President of Mental Advancement (who is responsible for chapter programming). The RME's duties overlap with other officers such as the Social Chairman and House Manager, and she works closely with the Chapter President. The RME is responsible for creating and developing her chapter's risk management program, educating the chapter on all applicable policies, procedures and laws, coordinating and assisting with programming in the area of risk management, and addressing campus needs. The Risk Management Educator manual covers general risk management information, duties of the office and legal liability issues. Specific risk management issues such as alcohol awareness, responsible event planning, eating disorders, substance abuse and acquaintance rape are included. A revised Social Chairman manual has also been introduced to outline how to plan successful, safe social events while following all applicable laws and university and Fraternity policies.

- Each chapter participates in a yearly risk audit to assess areas of potential risk and to educate and increase awareness of risk avoidance.

- Risk management information is included in each chapter mailing. The Fall Mailing included a challenge to all Pi Phi chapters to hold a minimum of two non-alcoholic social events per school term. (For results of the Pi Phi Challenge, see page 44.)

- Numerous videos and programs are available through Central Office on risk management related issues. Many of the programs are sponsored by other

NPC or NIC groups. Chapters are encouraged to participate in campus risk management programs and to sponsor programs for their Panhellenic or university, including the National Collegiate Alcohol Awareness Week. One such program is "Taking it Personally," an interactive program with workbooks and videos. The program was originally presented by Chi Omega. It has been revised and personalized for Pi Beta Phi chapters. It covers respect for property, hazing, social event planning, acquaintance rape and substance abuse. All Pi Beta Phi chapters participate in this program.

Risk management covers serious issues with potentially far-reaching consequences. Pi Beta Phi has taken an active role in educating our chapters through a variety of programs and resources that begin during college and continue after graduation. Most importantly, Pi Beta Phi provides encouragement and support to our chapters. Our focus on risk management education is designed to help our members have a safe and memorable college experience and to provide them with valuable tools and information for the future.

Pi Beta Phi strives to promote responsible behavior by all members at all times. We want to educate our members and encourage them to make intelligent and informed decisions. While personal responsibility is a cornerstone of Pi Beta Phi's risk management program, we belong to a fraternal organization where we share common goals, ideas and values. It is not enough to be personally responsible. As Pi Phi, we support, assist, guide and work together to make decisions and choices—much like Guardian Angels.

## Drugs and Substance Abuse

Not only is the use, possession or sale of drugs illegal but also contrary to the purpose and ideals of Pi Beta Phi. There has been a resurgence of illicit drug use on college campuses. After nearly two decades of decreased use, the past five years has seen a rise in the number of students using marijuana, heroin, speed, cocaine, LSD and a wide variety of "exotic designer" drugs. These drugs carry with them serious implications with long lasting effects, both physically and legally.

Each chapter of Pi Beta Phi has a copy of "Friend to Friend" a program designed to increase awareness of alcohol and other drugs. Also available to chapters are videos about recognizing and confronting alcohol and drug abuse.

## Eating Disorders

Eating disorders are a problem on most college campuses and are pervasive in our culture. Being thin has become a virtue—just look through any fashion magazine. The rock star status of fashion models has not helped.

Medical problems caused by eating disorders can be serious and life threatening. Professional medical help is necessary along with support and encouragement from family and friends.

Most campuses have resources and counseling services available regarding eating disorders.

Pi Beta Phi offers material devoted to increasing knowledge and awareness of eating disorders. This material includes the "Images" program and a Time/Life Medical video "Anorexia and Bulimia."



“Sorority hazing has been more psychological than physical, more secretive than societal, more chapter tradition than impulsive behavior.”

## Some Traditions are Better Broken

Thoughts on Hazing by Jean Wirths Scott

- Pledges are taken to a member's apartment where bottles of liquor are strapped to their arms, and they are forced to "drink 'til it's gone."
- Pledges are visited at 2 a.m. in their dorm rooms to be certain they are wearing pledge pins. They are asked questions and given shots to drink if they do not respond correctly.
- Blindfolded pledges are driven to the beach late at night where fraternity men, bonfires and alcohol are present.
- Pledges wearing white T-shirts are taken to a fraternity house and thrown into showers. Then they are tied up and made to read from a pornographic magazine to members of the fraternity.
- Pledges are brought into the sorority house living room and made to face a panel of actives. Each pledge is interrogated about her personal life and sexual activity.
- At midnight, the last clue in a scavenger hunt leads pledges to the men's bathroom at the dark and empty football stadium.
- Pledges gather for a "wet bid day party" and feel pressured to drink in order to gain acceptance and to prove their worthiness.

Tradition? Volunteer participants? Exaggerations? Perhaps, by some misguided definition, these are examples of "tradition." Perhaps, by some perceptions, participants have volunteered. Exaggerations? No, these are real activities. Though they do not all include Pi Phi chapters, they all constitute hazing. In each one, there is potential for injury, whether it be physical or injury to self-esteem and human dignity. Each activity constitutes hazing, whether the danger is brought about intentionally or unintentionally, whether pledges are pressured to participate or they do so voluntarily, whether the activity is an age-old chapter tradition or a first-time innovation. These are planned, premeditated activities. Tragic consequences are not part of the blueprint, but the potential for tragedy is there.

Hazing among sorority women is not new. Until recently, it received far less media attention than that given to male fraternity hazing. Ours has been more psychological than physical, more secretive than societal, more chapter tradition than impulsive behavior. University administrators report that parents are shocked to learn about physical or psychological abuse among sorority women. As one administrator says, "The mindset is that fraternity men engage in things that are unacceptable ... people have not taken note of hazing in sororities." That is changing. Media coverage has brought a heightened awareness of women's hazing activities and has led us to take a closer look at the definition.

From the NBC Monday Night Movie "Dying to Belong," to the Montel Williams, Oprah Winfrey, and Geraldo television talk shows, to the movie "Scream 2," to the HBO documentary "Frat House," to an article in the new *Teen People* magazine, to newspaper headlines from coast to coast—the list is endless—an unfavorable light

is being cast on Greek membership. While hazing is not something found in all chapters on all campuses, women's groups now do share the spotlight with the men. Unfortunately, we are not without guilt.

We've all heard statistics that attribute the death of more than 75 collegians in the past 20 years to incidents of hazing. An effort has been made to find a single female member of an National Panhellenic Conference group in that statistic, and not one has been documented. More than 75 male fraternity pledges or members have died as a result of hazing. The inability to identify a sorority woman in the statistics should not bring comfort, and it does not excuse female hazing in any way. It simply means we are sitting on a time bomb, a powder keg, waiting for the inevitable.

Being a member of a sorority should be an integral part of a college student's life. Every year, thousands of college women decide to rush and more than 4,500 choose to become members of Pi Beta Phi. The decision to join should not have potential for becoming a deadly one, as it has in the lives of several male fraternity pledges this past fall. As a chapter officer or the big sister of a potential new member, as an alumna adviser or international officer, as a university administrator, I would not want to share responsibility for the loss of a life—or death to an individual's self esteem. I certainly would not want to be the parent involved.

In comparative reports from 1990 and 1997, research shows that the most frequently engaged in types of female hazing activity (a Top 10 List, so to speak) did not change. The list includes scavenger hunts, consumption of alcohol, signature lists, blindfolding, singing to fraternities, wearing ridiculous clothing, interrogations, yelling at



pledges, running errands for actives and intimidation about initiation. While the activities remain constant, a significant increase was found in the reported frequency of required or encouraged use of alcohol. We cannot deny that the hazing/alcohol combination opens the door to a large number of additional problems.

Forty states now have anti-hazing laws. Few universities are without anti-hazing policies. The National Panhellenic Conference recently updated its definition of hazing and adopted a new anti-hazing position statement. Every one of the 26 NPC member groups clearly forbids hazing. Yet research indicates that state statutes have not been a deterrent to sorority hazing. And, in spite of university, NPC and member group intolerance, hazing still does exist. A chapter of one NPC member group has been banned from a campus by the administration for two years. Another has lost its right to recruit members for two years. Several others are on university and member group probation. Individual members are being dismissed. A look at hospital emergency room records all across the country would show treatment of sorority women who are victims of hazing/alcohol activity.

Pi Beta Phi shares the concern of many that the definition of hazing has become clouded. What is considered voluntary participation by some, is considered peer pressure by others. What some chapters define as hazing, others define as tradition. Activities often are planned under the guise of expectation or necessity—to build unity, foster teamwork, form a common bond among new members, prove loyalty, build character, test endurance, and serve as a rite of passage. A brochure published by the University of Oregon states, "... the truth is, hazing doesn't build bonds, it breaks spirits; it creates

cliques, not sisterhood; it destroys organizations that were founded on personal integrity and respect for fellow humans."

The NPC Statement of Position On Hazing appears in this issue (see page 23). If all aspects of a planned activity are measured against that statement, there will be little room for misunderstanding. If every member, collegiate or alumna, takes advantage of the Hazing Hotline, we will have taken a giant step toward living up to the founding principles for which Pi Beta Phi stands—and, perhaps, we will have saved a life.

An article in the Spring 1980 issue of *The ARROW* cited Pi Phi's proud tradition of many firsts, and it said, "... why not be the first to abolish all forms of hazing!" The article went on to say, "A challenge for the decade of the '80s: to abolish hazing—even in its mildest form. With Pi Phi leading the way, it should not take a full decade."

The decade of the '80s has come and gone. The decade of the '90s has less than two years left. The year 2000 fast approaches. The time is past due for members of Pi Beta Phi to take a leadership role in abolishing hazing. Anyone who cares about the Greek system and human dignity must step forward and take responsibility.

As the University of Florida's statement on hazing says, "... hundreds of new member classes have endured physical and mental abuse in the name of sisterhood and unity. It's time to break with tradition ... some traditions are better broken."

*Appreciation to the following for their research, articles and thoughts on this subject: D. Shaw, T. Morgan, J. Evans, E. Stevens, L. Mercer, the Chronicle of Higher Education, University of Oregon, University of Florida.*

## Hazing Hotline

Pi Beta Phi has developed a new Hazing Hotline. Concerned collegians, alumnae, parents or administrators can call to report any hazing activities. The Hotline is (800) 320-1867.

## Date Rape Drugs

The drugs Rohypnol, commonly known as "roofie," and gamma hydroxybutyrate (GHB), commonly known as "liquid ecstasy," "liquid X" or "cherry meth," have been showing up on college campuses. They are known as "date rape drugs." According to the Drug Enforcement Administration, these drugs have been implicated in college rape cases.

Rohypnol is similar to Valium, but 10 times more potent. When combined with alcohol, common effects are blackouts lasting 8-24 hours. Overdoses can result in confusion, memory loss, respiratory depression, impaired coordination and seizures. Prolonged use can result in addiction.

GHB was originally used as an anesthetic until the side effects were discovered. The drug may cause seizures or coma. GHB is inexpensive, at \$10 a vial, and is made from chemicals that are easily obtained. The most common form is an odorless, colorless liquid, but may be found in powder or capsules.

Rohypnol and GHB are known as "date rape" drugs because they decrease inhibitions, motor control and they cause "blackouts." Most victims have no memory of what has occurred when they wake up. These drugs are usually slipped into drinks without any knowledge or detection of potential victims.

Collegians can protect themselves from these drugs by not leaving their drinks unattended.



“ It would be a mistake of major proportions if the trend toward alcohol-free housing served only to increase pre- and post-party parties ... ”

## Advice from Counsel

By Timothy M. Burke

Three fraternity alcohol-related deaths began the 1997–98 academic year underscoring with tragic emphasis the continuing need for managing the risks related to alcohol consumption. Those deaths gave added impetus to the alcohol-free housing movement that is now seeing rapid expansion among men’s groups. (Women’s housing has long been alcohol free.) The men’s groups’ actions have been heartily endorsed by both the National Panhellenic Conference and the National Interfraternity Conference.

Alcohol-free housing is a major step forward in risk management, but as with so many other risk management tools, it is only a part of what must be a complete risk management package. It would be a mistake of major proportions if the trend toward alcohol-free housing served only to increase pre- and post-party parties at private homes or apartments. Chapters, their officers and members, should be extraordinarily careful with regard to such activities. Too frequently private pre-party parties may simply be a vehicle through which some members of Greek organizations skirt the law and risk management practices regarding the use of alcohol at fraternity and sorority parties. Whenever in a house or apartment occupied by a number of chapter members, there is a pre-party party, that event should never be allowed to become a “chapter” event.

The chapter has hopefully planned its event, whether a party or a formal dance, with proper risk management practices in place, including prohibiting the consumption of alcohol by those who are not of legal age. Those plans can be torn asunder when significant groups of chapter members join together in consuming alcoholic beverages at a private location prior to attending a

chapter event. At such private gatherings, it is likely that little thought is given to obeying the law prohibiting consumption of alcohol by minors and some pre-party goers may be most intent on downing several drinks in quick succession knowing that because of their age they won’t even be permitted to consume alcohol when they arrive at the fraternity party.

Individuals sponsoring such events or allowing them to take place in their apartments or homes expose themselves to significant risk of both personal criminal and civil liability. Providing alcohol to minors is, in most states, a crime. Encouraging the consumption of alcohol to excess, particularly to minors, where it leads to injury, is also likely to create civil liability (laws vary from state to state).

### Alcohol and Rape

Numerous studies and reports show the connection between alcohol and rape. The statistics show that 50–90% of campus rapes involve alcohol.

Alcohol increases the risk of rape for many reasons. Alcohol in any amount impairs the thinking process and can impair a person’s physical actions in defending against attack. Alcohol impairs a person’s ability to recognize a warning. A woman may be too drunk to clearly say and mean “No,” and a man may be too drunk to hear or listen to what the woman is telling him, no matter how clearly. Alcohol may make a woman less able to react quickly to unwanted sexual contact and less able to defend herself.

Chapters should take several specific steps to ensure that Pi Beta Phi does not become caught up in the web of liability created by the hosts and organizers of such pre-party:

- Pre- and post-event parties should be officially discouraged.
- As part of educational programming regarding risk management and alcohol, the dangers of such pre-party events should be emphasized. It should be made clear that the larger the pre-party, the greater the risk is to the hosts of something going wrong and the greater the danger that liability would be spread to the Fraternity.
- Pre- or post-parties should never be discussed or planned at chapter meetings or by chapter committees.
- No invitations to such events should be posted in the chapter house, suite or room. Chapter officers should do nothing to aid in the organization of such events including providing chapter rosters or address lists for invitations.
- Pi Beta Phi members who insist on conducting such private events ought to recognize that in order to protect themselves from liability, they ought to follow the same kinds of risk management practices the Fraternity has in place for its event.
- The bottom line is that the law regarding alcohol consumption by minors or consumption to excess applies both in the private setting and at a formal chapter event.



The ARROW invites comments about the magazine, its articles or any other topic of interest to our readers. In order for your letter to be published, please include full name, address and chapter of initiation. Letters may be edited for style, clarity and length. The address is 7730 Carondelet, Suite 333, St. Louis, MO, 63105 or e-mail at [thearrow@primary.net](mailto:thearrow@primary.net).

# From the Reader

## Caring Enough to Confront

My mother was a member of Delta Delta Delta Fraternity. She passed away five years ago. From her death, I have learned a difficult lesson that I try to share with all collegians and alumnae I meet.

My mother died of chronic ethanolism. In laymen's terms, it is called alcoholism. Alcoholism is such a terrible disease, and it affects every level of society. Education is so important in our fight against it. My mother's descent into alcoholism probably started innocently enough during her college days at socials with fraternities. I urge collegians to challenge their sisters who could be drinking too much and too often. But of even greater importance, once we leave the closeness of college situations, I urge alumnae to talk to and encourage other alumnae to get help for a drinking problem. I think the alumnae club with which my mother was involved knew of her drinking problem, because she was often inebriated at social events. I hope that we, as adults, will be responsible for not condoning this behavior with silence. I personally challenge all women to evaluate their lives and notice where they let drinking and drugs control their lives. I do not think we should stop educating ourselves when we graduate, but continue to talk about this throughout our lives. No one is immune to this disease. My mother was not and neither am I.

**KRISTINE KARPENTER MCCORVEY**  
FLORIDA DELTA  
DULUTH, GEORGIA

Reprinted with permission from The Trident of Delta Delta Delta.

## Winter ARROW

I wanted to express my thanks to you as editor and to the author of "The Real Road to Wellville," and "Clare Buie Chaney's How-to Guide on Blooming Where You're Planted" in the Winter 1997 issue of *The ARROW*.

I'm a breast cancer survivor of 14 years and a volunteer with the American Cancer Society's Reach to Recovery program. This is a program in which breast cancer survivors like me call on patients who are newly diagnosed or are being treated for breast cancer. Further, I train other breast cancer survivors to be volunteers in this program.

It's in the latter role that I found these articles so useful. I have referenced Norman Cousins' autobiographical experiences with laughter, but not many women under 50 know who Norman Cousins is. Clare Chaney's 12 steps will be a grand addition to my literature references.

I was glad to see the emphasis on early detection in the article about Dr. Chace Lottich's team in Indianapolis, Indiana. Over and over, I hear women talk about finding their own lumps or being suspicious when they were not feeling "just right." Certainly a vigilant awareness of one's health together with monthly self examinations, a yearly physical and a yearly mammogram (if possible) are the best defenses we have against the disease.

Again my thanks for these articles. They may help some woman somewhere save her life.

**DODIE RAMSEY MATTHEWS**  
KANSAS ALPHA  
SEATTLE, WASHINGTON

**Editor—Elizabeth Gillison Cannon**  
**Assistant Editor—Sara Loraine Grier**

Pi Beta Phi Central Office  
7730 Carondelet, Suite 333  
St. Louis, MO 63105  
(314) 727-7338  
FAX: (314) 727-8049  
E-mail: [thearrow@primary.net](mailto:thearrow@primary.net)

Address correspondence of an editorial nature to the editor.

### Copy Deadlines

Spring—Dec. 1      Fall—June 1  
Summer—April 1      Winter—Oct. 1

### Address Changes and In Memoriam

Pi Beta Phi Central Office  
7730 Carondelet, Suite 333  
St. Louis, MO 63105

*The ARROW of Pi Beta Phi* (USPS 032-540) is published quarterly by Pi Beta Phi Fraternity, 7730 Carondelet, Suite 333, St. Louis, MO 63105-3328. Second class postage paid at St. Louis, MO. POSTMASTER: Send address changes to *The ARROW of Pi Beta Phi*, 7730 Carondelet, Suite 333, St. Louis, MO 63105-3328.

### Pi Beta Phi Fraternity, ΠΒΦ Founded 1867

Emma Brownlee Kilgore  
Margaret Campbell  
Libbie Brook Gaddis  
Ada Bruen Grier  
Clara Brownlee Hutchinson  
Fannie Whitenack Libbey  
Rosa Moore  
Jennie Nicol, M.D.  
Inez Smith Soule  
Fannie Thomson  
Jennie Horne Turnbull  
Nancy Black Wallace



Member College Fraternity Editors Association



# News from Arrowmont

by Gretchen Church



**Sandra Blain, Director of Arrowmont, is a member of the College of Fellows of the American Craft Council. The council is a national, nonprofit educational organization and was founded in 1943.**

## Arrowmont Director Honored

Arizona Beta Sandra Blain, Arrowmont Director and professor of art at the University of Tennessee, received two awards this year. She was named an Honorary Fellow of the American Craft Council. The council's College of Fellows was established in 1975 and currently includes 174 people, who are elected based on outstanding ability, leadership in their field and professional involvement for at least 25 years. Sandra was elected to this prestigious circle because of her significant contributions to the field of crafts.

Sandra also received the 1997 Kurka Faculty Award from the University of Tennessee in recognition of her overall achievements, community participation and leadership positions.

A native of Chicago, Illinois, Sandra received her bachelor's degree in education at Northern Illinois University and her master's degree in art and her master's of fine art degree from the University of Wisconsin. She has been an administrator at Arrowmont School of Arts and Crafts since the late 1960s, serving as director since 1980. Sandra has been a professor at the University of Tennessee since 1984 and is a lifetime member of the Southern Highland Craft Guild.

"I am grateful to be honored," Sandra says. "But the pleasure of these awards is knowing that through my work, many individual lives are culturally enriched. I recognize the importance of teamwork in accomplishing goals, and I appreciate the strong support I have enjoyed from the board and staff members at both institutions with which I am associated."

## Arrowmont Employees Recognized

At the Fall Board of Governors Meeting, five Arrowmont employees were honored for their years of service to the school. The dedicated five have served a combined 142 years at Arrowmont. Those honored included: Bill Griffith, Assistant Director, 10 years of service; Sandra Blain, Director, 30 years of service; Nadine Whitted, Business Manager, 42 years of service; Zanley Watson, Maintenance Worker, 33 years of service; and Ernie Shultz, Maintenance Supervisor, 27 years of service.

## Volunteers Provide Invaluable Assistance

Arrowmont relies upon its volunteers to keep the school running smoothly. Volunteers are instrumental in sending out the spring and summer workshop brochures and in assisting with the set up and removal of gallery exhibitions, packing and shipping of art work and various school mailings. The time and effort volunteers put forth is generous and is part of what makes Arrowmont such a special place.



**Kentucky Alpha Helen Anderson Lewis and Doris Koechert, two area residents, prepare mailers for Arrowmont's Spring 1998 Workshops. Helen, who worked at Arrowmont from 1971 to 1973, is a dedicated volunteer. "I love to be at Arrowmont, and I enjoy working with the nice group of volunteers we have," she says. "I don't think Arrowmont could get along without its volunteers."**



# News from Arrowmont



Jan Harrell of Houston, Texas, at work in one of the enameling conference workshops.

## Conference News

Arrowmont hosted two highly successful specific medium conferences in the fall. In September, "Making History: Pushing the Craft of Polymer Clay" was the premier national conference for the media of polymer clay. Sponsored by the National Polymer Clay Guild, the conference featured an exciting array of new techniques. Highlights of the conference included demonstrations and hands-on sessions, slide talks, a conference store, a gallery exhibition and classes taught by nationally recognized artists.

October brought the Sixth Biennial Conference of the Enamelists Society titled "Tradition and Transformation: International Enamels '97." The international conference focused on both the traditions of the past and the transformations evolving in contemporary enameling. Activities included pre- and post-conference workshops, juried, student and invitational exhibitions, an instant gallery, an auction and a pin swap. The conference will be covered in-depth in *American Craft* magazine this spring.

Arrowmont will host several conferences beginning in August with the "Tennessee Association of Woodturners Conference." Other conferences include: "American Craft Council Southeast Conference" in September, the "Tennessee Art Educators Conference" in October, and the "National Wood Conference and Workshops" in late October and early November.

## Pi Phi Arts Weekend

On April 30–May 3, Pi Phis from across the country have the opportunity to get a taste of Arrowmont. Participants may choose from a wide-range of classes, which are designed for students at every level of expertise. The two-day courses allow Pi Phis to experience Arrowmont School of Arts and Crafts, one of the nation's most highly ranked arts and crafts complexes. Pi Phis will also tour the facilities at Arrowmont to see how studios are constantly being updated and expanded to provide students with high-quality training.

Register now for the Eighth Annual Pi Phi Arts Weekend April 30–May 3. Workshops and instructors are:

- Basketry—Kim Keats
  - Polymer Clay—Tamela Wells Laity
  - Woodturning—Rodger Jacobs
  - Watercolor—Betsy Worden
  - Stained Glass—Bill May
  - Calligraphy/Book Arts—Billy McClain
  - History of American Folk Art and Crafts—Barbara Crawford
- Call (423)436-5860 to register.

## Calendar of Events

### Conference/Workshop Schedule

#### Spring Classes

March 2–6, 9–13, 16–20, 23–27

#### Spring Elderhostel

March 29–April 4, April 5–11

#### Tennessee Watercolor Society Workshops

April 21–26

#### Pi Phi Arts Weekend

April 30–May 3

#### Summer Classes

June 1–5, 8–12, 15–19, June 22–July 3,

July 6–10, 13–24, 27–31, August 3–7

#### Tennessee Association of Woodturners

Conference

August 22–23

### Gallery Exhibitions

50th Anniversary Traveling Collection at the Walter J. Anderson Museum in

Ocean Springs, Mississippi

February 15–April 15

New Form/New Function: Surface

February 26–April 11

National Spring Faculty Invitational

February 26–April 11

27th Annual Exhibition: Tennessee

Watercolor Society

April 15–May 16

Artists-in-Residence Exhibition

April 15–May 16

National Summer Faculty Invitational

Exhibition

May 22–August 7

American Craft Council Southeast:

Spotlight Exhibition

August 13–October 24

Arrowmont galleries are open year round to the public, Monday–Saturday from 8:30 a.m. to 4:30 p.m. For more information call Arrowmont at (423) 436-5860.



# Pi Beta Phi Foundation

## Planned Giving



The term "planned giving" has become more common in the last decade. Universities, churches and other nonprofit organizations use it frequently to describe particular giving options for their supporters. Planned giving refers to making a commitment to a charity for a future gift. Did you know you may make a planned gift to the Pi Beta Phi Foundation as well?

There are many ways in which a person may include the Foundation as a beneficiary of a planned gift. Options include, but are not limited to, a bequest in a will, a life insurance policy or a charitable trust.

A member who wishes to support Pi Beta Phi through a planned gift is encouraged to make the gift to the Pi Beta Phi Foundation. The 501(c)(3) status of the Foundation offers tax benefits to donors which do not occur when the donation is made directly to the Fraternity. For further information on making a gift to the Pi Beta Phi Foundation, please contact Lynn Raney, Director of the Pi Beta Phi Foundation.

## The Marianne Reid Wild Society

Membership in the Marianne Reid Wild Society recognizes donors who have informed us of their planned gift commitment to the Pi Beta Phi Foundation. Charter members are noted with an asterisk\*.

If you have made a provision for the Pi Beta Phi Foundation and have not yet informed us, please contact the Foundation Office.

Anonymous\*  
Anonymous\*  
Patricia Emens Anderson,  
South Carolina Alpha\*  
Patsy Cox Barab, Indiana Gamma\*  
Anne Chestnut Bartlett,  
Michigan Gamma\*

Marian Spearman Bengel,  
Tennessee Alpha\*  
Rick & Roberta Boyd Bragan,  
West Virginia Gamma  
Elizabeth Bietsch Brizendine,  
Pennsylvania Gamma\*  
Robert & Barbara Schwartz  
Bromberg\*  
Margaret Heller Church,  
Kansas Alpha\*  
Joan Robinson Clark, Indiana Beta\*  
Betty Stauffer Collinson, Kansas Alpha  
Sheila A. Consaul, Illinois Theta  
Margaret Sullivan Davies,  
Indiana Gamma  
Jean Orr Donaldson, Oklahoma Beta  
Maurine Stuart Dulin,  
Virginia Gamma\*  
Janet Goode Durham,  
Wisconsin Gamma  
Marjorie Deetz Early,  
Wisconsin Gamma

Maxine Kruth Elkington,  
Missouri Beta\*  
Marilyn Simpson Ford,  
Nebraska Beta\*  
Mary Quigley George, Oregon Delta  
Betty Bailey Hall, Oklahoma Alpha\*  
Anne Busch Hills, Arizona Alpha  
Elizabeth Staggs Huckabay,  
Oklahoma Alpha  
Dorothy Nelsen Hunter,  
Nebraska Beta\*  
Mary Lou Harris Johnson,  
California Gamma  
Fay J. Joseph, Michigan Alpha\*  
Carolyn Ottinger Kovener,  
Iowa Alpha\*  
Dorothy Krug, Maryland Alpha  
Stanley & Evelyn Peters Kyle,  
Illinois Alpha\*  
Adrienne Hiscox Mitchell,  
Kansas Alpha\*  
Frances Bruning Murney,  
Washington Beta\*  
Ann Dudgeon Phy, Texas Alpha\*  
Emilie Pope Plake, Missouri Beta\*  
Karma Stephens Roberts,  
Oregon Alpha  
Lucille McCrillis Ryland,  
Colorado Beta\*  
Jerry Solomon\*  
Evelyn Petersen Stevens,  
Indiana Gamma  
Sally Seabright Strang, Ohio Delta\*  
Phyllis Carter Stucker,  
Indiana Gamma\*  
Lucinda Thornton Trabue,  
Tennessee Beta\*  
Jane Houchens Tuten, Tennessee Beta  
Carol Inge Warren,  
North Carolina Beta\*  
Aileen Aylsworth Welgan,  
Alberta Alpha\*



# New Chapter Installation

## Pennsylvania Kappa Installation

In October, Pennsylvania Kappa was installed at Lehigh University in Bethlehem, Pennsylvania. This new chapter, which was colonized during September 1997, brings the Fraternity's Roll Call to 132 collegiate chapters.

Pennsylvania Kappa is situated on the 1,600 acre campus of Lehigh University. Founded in 1865 by industrialist and philanthropist Asa Packer, Lehigh University offers students an integrated education that is both liberal and technical. Lehigh enrolls about 4,500 undergraduate students, 37 percent of whom are women. The new Pi Beta Phi chapter brings Lehigh's total number of sororities to eight.

The colonization of the Pennsylvania Kappa Chapter began in August with a two-week registration period prior to rush. From August 26 to September 4, Pi Beta Phi graduate consultants recruited potential members. More than 90 women registered for the colonizing rush, which began on September 8 and culminated with bid day on September 11. The new colony began with 58 members.

Installation activities for Pennsylvania Kappa were held October 24-26, 1997. The local installation was coordinated by Pennsylvania Kappa Resident Graduate Consultant Amy Dailey and Traveling Graduate Consultant Katrina Kuehn.

Events began on Friday evening as Gamma Collegiate Province President Lori Poveromo Haight read the Constitution & Statutes. After the formal pledging ceremony for alumna initiate Mary Ann Malsbary Rowe, collegians and alumnae joined other



**Charter members of the Pennsylvania Kappa Chapter with Resident Graduate Consultant Amy Dailey and alumna initiate Mary Ann Malsbary Rowe.**

guests for a Cookie Shine. The Eight Pearls Ceremony, return of the pledge pin and History of the Cookie Shine followed. Participants ended the evening by watching Pi Beta Phi's extension slide presentation.

The Initiation Ceremony was held in the University Center. Grand President Beth van Maanen Beatty conducted the initiation ceremony for the undergraduate women and the alumna initiate. She was assisted by Grand Vice President of Collegians Sarah Ruth "Sis" Mullis, Grand Vice President of Alumnae Carolyn Pavletich Lesh and Grand Vice President of Finance Lou Ann Montgomery Carter.

Other international officers in attendance included: Grand Vice President of Membership Kay Knittle Brock, former Grand Vice President of Membership and New Chapter Assistance Officer Carol Inge Warren, Director of Chapter Support Region II Melissa Dates Schmidt, Director of Collegiate Extension and Rush Julie Geiger Shannon, Director of House Corporations East Patricia Emens Anderson and Installation Coordinator Jennifer Plagman.

Saturday evening's banquet was held in the Allentown Room of the Comfort Suites of Bethlehem. Toastmistress Nancy Mawhinney introduced the evening's program. The

chapter received many gifts and generous donations from chapters and alumnae clubs from across the nation and Canada. The gifts presented included: a silver tray from Grand Council, a President's pin from the Fraternity, a silver-plated punch bowl from the Philadelphia-Main Line, Pennsylvania Alumnae Club, two crystal candle sticks from the Vermont Beta Chapter, and two white candelabras from the Gamma Collegiate Province.

Chapter members provided entertainment by singing, "Sister, Sister Hello," "Remember" and "Speed Thee My Arrow." Participants also enjoyed a candle-lighting ceremony.

On Sunday a model chapter meeting was held on campus. The meeting was conducted by Grand Vice President of Alumnae Carolyn Pavletich Lesh. She was assisted by other international Fraternity officers. Chapter officers were installed by Grand President Beth van Maanen Beatty.

Following the model chapter meeting, members and guests attended a reception in the University Center. Many friends and family members of the Pennsylvania Kappa Chapter attended, in addition to guests from Lehigh University. All guests enjoyed the wonderful closing to a beautiful and special weekend for Pi Beta Phi.



# Links to Literacy



## Links to Literacy Writing Contest

This fall Pi Beta Phi sponsored the Second Annual Links to Literacy Writing Contest. The contest posed the question: Describe how Links to Literacy aids in the moral, mental and social advancement for ourselves and those we serve? Fraternity members, collegiate and alumnae, were asked to submit poems, essays, short stories or any other genre of their choosing. Works were judged on originality, creativity, writing style and response to the question.

The winning entry was submitted by Washington Beta Patricia Hill Helton of Winter Park, Florida.

### "Leaning Forward While Standing Pat"

*Reading, learning  
intertwine  
Move us forward  
in our time*

*From history's path  
to what will be  
In dreams  
that set our spirit free*

*To find ideas  
fun and pleasure  
Expand horizons  
seek out treasure*

*Scour the rubble  
for one thought  
Ignite our brain  
haunt our heart*

*So none can silence  
the searching voice  
That is our future  
and our choice*

The **BELLEVUE-EASTSIDE, WASHINGTON ALUMNAE CLUB** sponsored a "Links to Literacy Book Drive" in October. Throughout the day, alumnae and collegians volunteered at the local Barnes & Noble bookstore, collecting donated children's books and answering questions about Links to Literacy. The book drive continued at the Washington Alpha chapter house with a spaghetti dinner. Speakers from two local literacy organizations spoke to attendees about the need for literacy programs and strategies for improving literacy.

In November, alumnae club members read stories to pre-school children at Bellevue Community College. Members also helped with the annual Microsoft Book Sale on the Redmond Microsoft campus. Bellevue-Eastside Alumnae Club members helped Microsoft Press employees set up the books and worked as cashiers during the sale. All proceeds from the sale benefit the Eastside Literacy Council, which promotes reading for residents of the community.

Members of the **OHIO THETA CHAPTER** were busy this fall with a major focus on Links to Literacy. Members became pen pals to a class of first-grade students. The chapter also worked on an Adopt-A-Classroom project, which involved working with first- and second-grade students. Once a week, chapter members helped out in the classroom, assisting in reading and writing activities. Each child received a bookmark and letters of encouragement throughout the semester.

Through their Links to Literacy service, chapter members had the opportunity to meet and speak with Tara Dawn Holland, Miss America 1997. Her platform was literacy, and she is a National Spokesperson for the Library of Congress and the Institute for Literacy. Pi Beta Phi presented her with a guardian angel pin to show their appreciation for her efforts toward literacy.



**Helping anyway they can, Montana Alpha Pi Phis learned about Links to Literacy while making bookmarks for the children at a local day-care center.**



## Think About Links

### 12 Keys to Successful Links to Literacy Programming

*If you can answer the following questions with concrete examples, you are making Links to Literacy a success. If you need assistance with any of these areas, or if you have any other Links to Literacy questions, contact the Links to Literacy committee member who lives nearest you.*

1. How do our programs emphasize service, not fund-raising, in keeping with the purpose of Links to Literacy?
2. Who is our club or chapter's Links to Literacy chairman?
3. What do we do to recognize Links to Literacy Week in October?
4. When we publicize our Links to Literacy programs locally and in *The ARROW*, how do we cover the who, what, where, when, how and why of the program?
5. When we publicize our Links to Literacy programs, how do we use exciting photographs that truly capture the essence of our project?
6. How do we use "Links to Literacy: A Pi Beta Phi Programming Guide" that was sent to all clubs and chapters in 1994?
7. What do we include with our annual program evaluation forms that we send to the Links to Literacy Chairman each spring that really convey the nature of our programs, how we planned them and the results?
8. Do we apply for the international Links to Literacy award for clubs and chapters given each year?
9. How do we encourage member participation in the annual Pi Beta Phi Links to Literacy Writing Contest?
10. How do we utilize members who have affiliations with literacy-minded organizations (i.e. schools, libraries, literacy coalitions) for partnering with these organizations to provide literacy service?
11. How do we make Links to Literacy fun for Pi Phis and for recipients of our service?
12. How do we talk about the difference we are making through Links to Literacy and share these experiences and results within our own clubs and chapters as well as in the Fraternity and local media?

## Links to Literacy Committee 1997-99

### Northern Region

#### COLLEGIAN

Lisa Schechtman, Illinois Epsilon  
Northwestern University  
School Address:

636 Emerson Avenue  
Evanston, IL 60201

lschecht@nwu.edu

Permanent Address:

448 Oakley, Clayton, MO 63105

#### ALUMNA

Joan Scholes Hill, Kansas Alpha  
3772 Wonderland Hill  
Boulder, CO 80304

### Middle Region

#### COLLEGIAN

Mandy McKnight, Tennessee Beta  
Vanderbilt University

School Address:

Pi Beta Phi, Fraternity Row  
Nashville, TN 37235

amanda.e.mcknight@vanderbilt.edu

Permanent Address:

5 Country Club Place  
Bloomington, IL 61701

#### ALUMNA

Jean Egmon, Illinois Alpha  
1625 Sheridan Road #212  
Wilmette, IL 60091  
egmon@nwu.edu

### Southern Region

#### COLLEGIAN

Stacy Amiss, Alabama Beta  
University of Alabama

School Address:

PO Box 11067  
Tuscaloosa, AL 35406

samiss1@bcc.cba.ua.edu

Permanent Address:

1427 Pier Avenue  
Metairie, LA 70005

#### ALUMNA

Barbara Roe Luhrs, Kansas Beta  
14067 Mastin  
Overland Park, KS 66221  
luhrs@kcnet.com



# Collegiate News

## “What makes your chapter strong?”

That's the question we posed to Pi Beta Phi's collegiate chapters for this issue of *The ARROW*. Community service, academic achievements, social endeavors and athletic accomplishments are just a few of the areas covered on these pages. Through photographs and stories, our chapters prove that they are flexing their muscles and building strong chapters.

Robynn Stokes and Joanie Powell, members of the **VIRGINIA DELTA** Chapter at Old Dominion University, are both majoring in dance. This winter, they performed in the Nutcracker ballet to benefit the Children's Hospital of the Kings' Daughters.

Members of the **INDIANA BETA** Chapter at Indiana University hosted a holiday decorating party with area alumnae. The Bloomington, Indiana Alumnae Club donated a large tree, which attendees decorated with angels, ribbons and hand-painted gold and silver balls. To top off the evening, collegians and alumnae watched the "Arrowmont: 50 Year History" video.

Members of the **WYOMING ALPHA** Chapter at the University of Wyoming donated blood during a campus-wide blood drive. Each spring and fall, they also volunteer to clean up a stretch of highway.

During a Roaring '20s party, members of the **NORTH CAROLINA BETA** Chapter at Duke University dressed up in flapper dresses and boas.

The **MICHIGAN ALPHA** flag football team won the 1997 intramural championship at Hillsdale College.

Each semester, the **CONNECTICUT ALPHA** Chapter at the University of Connecticut sponsors a dinner during which members help prepare the meal and then share an evening of sisterhood.

In October, members of the **TEXAS ALPHA** Chapter at the University of Texas participated in the Austin AIDS Walk, raising more than \$1,500 for AIDS research. To celebrate a successful academic semester, the chapter hosted a Scholarship Dinner. At the dinner, Texas Alpha Julie Harris Kocurek, a district attorney in Austin, discussed the importance of good study skills.

During the week before Thanksgiving, members of the **CALIFORNIA ALPHA** Chapter at Stanford University volunteered at a local shelter and soup kitchen, preparing and distributing Thanksgiving meals. During the holiday season, members who are fluent in Spanish helped low-income Spanish-speaking families create Christmas wish lists.

At Northern Arizona University, **ARIZONA GAMMAS** hold the majority of positions on the Panhellenic Council. The president, secretary, public relations officer, residence hall liaison and student association liaison are all Pi Phis.

Members of the **WEST VIRGINIA ALPHA** Chapter at West Virginia University kept busy this semester with intramural sports. Members played volleyball and softball and bowled.

The **CALIFORNIA ZETA** Chapter received the most athletic house award at the University of California, Santa Barbara for a second year in a row. The chapter won the Intersorority Volleyball Tournament, an annual event in which more than a hundred teams compete. They also won several smaller Greek community tournaments, including basketball, volleyball and soccer.



Members of the **ILLINOIS IOTA** Chapter at Illinois State University traveled to Gatlinburg, Tennessee to visit Arrowmont School of Arts and Crafts.





Last Spring, the **NORTH DAKOTA ALPHA** Chapter at the University of North Dakota was devastated by the flood that hit the Greater Grand Forks area. Water filled the basement of the chapter house and the contaminated water crept into the carpet on the main floor of the house. The kitchen, too, was destroyed, so chapter members shared meals at the Alpha Chi Omega house.

Now, the basement is remodeled and the house is back to normal. During the tribulations of the past semester, chapter members remained strong and supportive of each other. They celebrated their unity with a successful bid day and a chapter-wide house retreat.

To celebrate Big Sis revealing, members of the **ILLINOIS THETA** Chapter at Bradley University participated in a pumpkin-carving night and a roller-skating party.

The **OHIO EPSILON** Chapter at the University of Toledo performs a "Coast to Coast" skit during rush, portraying a diverse group of Pi Phis. The skit features Broadway Pi Phis, Harley Davidson Pi Phis, spirited Pi Phis and sun-loving Pi Phis. This skit is one of the tools the chapter uses for a successful rush.

Members of the **VIRGINIA ETA** Chapter sponsored the 11th Annual Lip Sync, an event that raises money to bring speakers to the University of Richmond to discuss women's issues.

To celebrate Halloween, the **OHIO IOTA** Chapter at the University of Dayton carved pumpkins for all of the other fraternities and sororities on campus. Members carved the letters of other groups in pumpkins and delivered the pumpkins to the various houses.

**KENTUCKY GAMMAS** helped build a float for the Homecoming Parade at Eastern Kentucky University. The chapter also participated in the Beta Theta Pi annual flag football tournament.

The **TEXAS GAMMA** Chapter at Texas Tech University is active in several events on campus. The Pi Phi football team competes against various sororities during Greek intramurals. During Homecoming, chapter members built a float in the shape of an arrow, decorated in wine and blue, for the Homecoming Parade. The chapter also participated in Fiji Olympics in which members competed in swimming, volleyball and a relay race.

Members of the **MISSISSIPPI ALPHA** Chapter have been involved in helping the Pi Kappa Phi Fraternity expand to the University of Southern Mississippi. Jamie Tregre, Julie Scott, Jean Anne James and Nicole Judice were members of the recruitment team who attended meetings, worked at the information tables and encouraged potential members to join.

**ABOVE LEFT:** Members of the Oklahoma Beta Chapter at Oklahoma State University traveled to Gatlinburg, Tennessee to visit Arrowmont School of Arts and Crafts. They toured the school, learning first-hand how Pi Beta Phi's national philanthropy helps artists in the area, and around the country. Chapter members are applying what they learned to their new philanthropy Arrowmont Day. Young children will visit the chapter house to attend classes and activities similar to those offered at Arrowmont.

**ABOVE CENTER:** Texas Zetas Leigh Goforth, Amy Bourque and Lee Ann Finest were members of the 1997 Homecoming Court at Baylor University.

**ABOVE:** The Arkansas Beta Chapter at the University of Arkansas at Little Rock are the 1997 State Flag Football Champions. The team won all five games of the state championship tournament.



Members of the **MONTANA ALPHA** Chapter at Montana State University participated in a 10k walk benefitting diabetes research. In another community service project, chapter members judged the annual Halloween pageant at the Bozeman, Montana mall.



# Collegiate News



The **MINNESOTA ALPHA** Chapter at the University of Minnesota has a lot to cheer about. Members are involved in campus activities including New Student Weekend, Campus Admissions Ambassadors, Greek Life Bible Study, Hockey Cheerleaders, Project Motivation and Dance Marathon Steering Committee. In addition to these activities, the chapter ranks No. 1 in grades and placed first in three of four categories during Homecoming. Above, Sarah Schauer, a member of the Homecoming Royal Court, and Kalynn Nuorala, a cheerleader for the Golden Gophers hockey team, celebrate Homecoming.

The **TENNESSEE GAMMA** Chapter at the University of Tennessee participated in Greek Week, winning third place in the volleyball competition. During Homecoming the chapter placed second in the "Anything Goes" event and first in the large banner competition.

Members of the **WASHINGTON GAMMA** Chapter at the University of Puget Sound participated in a "Richard Simmons Sweat in' to the Oldies" theme party with Sigma Nu Fraternity. The activity included aerobic workouts and dancing.

The **ALABAMA BETAS** at the University of Alabama won second place overall in Homecoming. Some chapter members traveled to Atlantic City to support Miss Alabama Elizabeth Stomps in the Miss America Pageant.

In support of National Collegiate Alcohol Awareness Week, **INDIANA DELTAS** attended several alcohol-free activities, including a mocktails party, a bowling exchange and a presentation by local police officers about alcohol laws.

**CALIFORNIA EPSILON** Erin Sechler was crowned Homecoming queen at San Diego State University. Erin is Vice President of Social Advancement, President of Order of Omega and involved in many other leadership organizations.

The **FLORIDA BETA** Chapter won first place overall in Homecoming at Florida State University. The chapter also received top honors for their intramural performance, attending the final rounds of football, tennis, volleyball and soccer competitions.

The **CALIFORNIA MU** Chapter at Pepperdine University participated in the first Anchor Splash philanthropy hosted by Delta Gamma to benefit the blind. The chapter's team of eight women competed in the 50-yard freestyle, the medley relay, a rubber ducky relay and a water bucket pass.

The **COLORADO ALPHA** Chapter at the University of Colorado volunteered for Habitat for Humanity and co-hosted a safe trick-or-treating party for community children. Chapter members decorated the Alpha Tau Omega Fraternity house for the holiday and handed out candy to children and parents.

The **FLORIDA ALPHA** Chapter at Stetson University is in first place contention for the Christianson Cup, which is given annually to the most athletic sorority. This year, the chapter has placed first in intramural basketball and second in volleyball. They suspect that their success may be due to their new intramural T-shirts which read "I play because I want to, I win because I can."

The **IDAHO ALPHA** Chapter at the University of Idaho had a great intramural season. The chapter won the flag football championship, women's doubles and singles tennis tournaments and had a successful volleyball season. Intramural sports help chapter members stay active, while building a sense of unity and teamwork.

Members of the **ILLINOIS ETA** Chapter at Millikin University sponsored the second annual 30-hour fast to benefit World Vision, a famine relief organization. Chapter members fasted for 30 hours and received pledges for each hour of fasting. Pi Phi also created a "money wall" for faculty, staff and students to tape dollar bills onto. A local television station broadcast the conclusion of the philanthropy, which raised nearly \$3,000.





Senior members of the **TEXAS ETA** Chapter at Texas A & M University participate in the Elephant Walk, an annual tradition in which seniors walk around campus remembering shared times. This tradition occurs during the last football weekend of the year.

In November, the **CALIFORNIA IOTA** Chapter at California State University at Chico sponsored a fun-filled day for an area Brownie troop. The day included a picnic lunch, song time and making book marks. Chapter members also participated in a Thanksgiving canned food drive for a local food bank.

**COLORADO GAMMAS** held their annual philanthropy Pi Phi Plunge. Students at Colorado State University compete in the swim meet, which includes events such as synchronized swimming, relay races and belly flop contests. Money raised is donated to Arrowmont.

**ILLINOIS ZETAS** cleaned up the University of Illinois campus during "Greeks Make a Difference" week. The chapter won an award for completing the most philanthropic hours of all sororities on campus.

The **TENNESSEE BETA** Chapter at Vanderbilt University hosted its second annual Toy for Tots Christmas Party. Various members of the campus community, including professors and deans, gathered at the chapter house for dessert and coffee. Each person donated a toy for children in need.

The **INDIANA GAMMA** Chapter at Butler University sponsored the "Swing into Spring" fund-raiser for the American Cancer Society. Chapter members collected donations and took pledges for hours of swinging on a community swing set.

During Homecoming at Iowa State University, members of the **IOWA GAMMA** Chapter engaged in several community service projects. Members volunteered at the Ames, Iowa, Boys and Girls Club and constructed houses for Habitat for Humanity. The chapter received second prize for their service efforts.

Following Big Sis revealing night, members of **NEBRASKA GAMMA** celebrated with ice cream sundaes at a shop on the Creighton University campus.

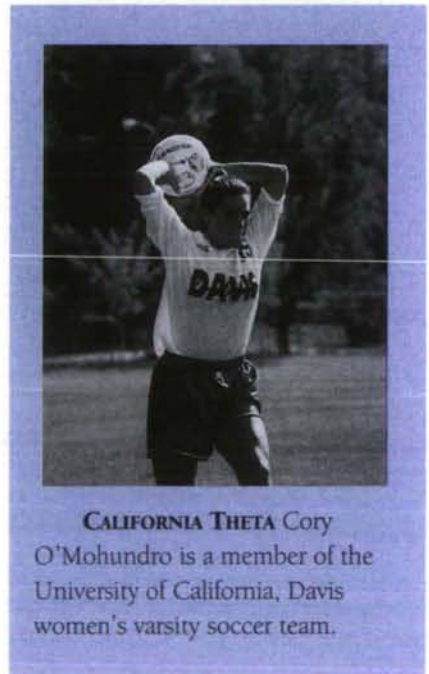
During Homecoming at Ball State University, members of **INDIANA ZETA** participated in the annual bed race, in which teams raced on beds down the campus' main drag.

Members of **IOWA ZETA** stay active in a variety of ways. Some enjoy a brisk walk around the University of Iowa campus, while others belong to campus athletic teams. Philanthropies, such as mud volleyball tournaments, also keep chapter members active.

**ABOVE LEFT:** The Iowa Beta Chapter at Simpson College held initiation at Holt House in Monmouth, Illinois. The trip allowed new members to learn about Pi Phi's founding first-hand.

**ABOVE CENTER:** South Dakota Alphas Rebecca Rieker, Jennifer Crane and Holly Hathaway present a pumpkin to the men of Phi Delta Theta during the Annual Pumpkin Serenade at the University of South Dakota.

**ABOVE:** The Kansas Beta senior class from Kansas State University journeyed to San Francisco where they took a bike trip through the city and across the Golden Gate Bridge.



**CALIFORNIA THETA** Cory O'Mohundro is a member of the University of California, Davis women's varsity soccer team.



# Collegiate News



**WASHINGTON BETAS** from left: Karen Vaux, Shannon Orser, Kristi Desrochers and April Rogalski pose with "Butch" the Washington State University mascot before a home football game. Chapter members participate in intramural sports such as softball and flag football. Members also volunteer their time at Women's Transit, a service for community women.

**IOWA ETAS** participated in Anchor Splash, Delta Gamma's national philanthropy. Pi Phis took first place among all of Drake University's sororities for the belly flop competition.

The **KANSAS ALPHA** Chapter at the University of Kansas hosted its annual Alumnae Halloween Party. Area alumnae brought their children to trick-or-treat and decorate cookies at the chapter house.

Members of **MICHIGAN GAMMA** at Michigan State University hosted a broomball tournament to raise money for Arrowmont. Several other Greek groups participated in this contest, which was held at a local ice rink.

Members of the **KENTUCKY ALPHA** Chapter at the University of Louisville volunteered at a local dental fair sponsored by Colgate Palmolive. Chapter members painted children's faces and dressed in costumes to entertain the children.

In celebration of **LOUISIANA BETA'S** anniversary at Louisiana State University, chapter members donated toys, crayons, coloring books and stuffed animals to the MD Anderson Hospital in Houston. Chapter members also volunteer at a local elementary school, tutoring and reading to children. To raise money for Arrowmont, the chapter hosts a doubleshot basketball tournament.

The **OHIO ALPHA** Chapter carried on a long-standing Ohio University tradition by painting the campus "Wall" with Pi Phi colors and letters. School groups are allowed to personalize the wall throughout the year.

Members of the **MISSOURI BETA** Chapter at Washington University participated in a car wash fund-raiser to benefit local charities. The chapter sponsors this event each year, in conjunction with Sigma Phi Epsilon Fraternity.

**OKLAHOMA ALPHA** Teressa Sorenson was crowned Miss University of Oklahoma, based on her contributions to the campus and her sorority.

The **NORTH CAROLINA GAMMA** Chapter at Wake Forest University participated in the Second Annual Panhellenic Fashion Show to raise breast cancer awareness. The show featured a speaker on breast cancer from a local hospital, and all proceeds went to breast cancer research.

Members of **NEW YORK ALPHA** at Syracuse University participated in many events this year. During Homecoming, members built a float for the campus parade. To celebrate Halloween, the chapter hosted a community Halloween party, where they handed out bags of candy and painted children's faces.

**MISSOURI GAMMAS** participated in a city-wide AIDS Walk for Life to raise money for a local branch of the AIDS Foundation. Chapter members help keep the Drury College community clean by adopting a street. Each semester, members pick up trash on their section of the street.



**ILLINOIS BETA-DELTA** Sarah Atkinson helped lead the Knox College women's tennis team to a third place finish at the Midwestern Conference Championships.





Members of the **ILLINOIS ALPHA** Chapter at Monmouth College are a force to be reckoned with on the powder puff football field.

**OHIO ZETAS** at Miami University placed fourth in the Greek Week championships, winning tennis, soccer and track tournaments. Chapter members joined with Delta Gammas in a fund-raising car wash to support a local tutoring program.

During Sigma Chi Derby Days, members of the **KENTUCKY BETA** Chapter at the University of Kentucky participated in a tug-of-war contest to help raise money for a local charity. In another community service effort, chapter members worked at an area McDonald's to earn a percentage of the profits for charity.

Members of the **VIRGINIA EPSILON** Chapter at the University of Virginia work to beautify their chapter house by planting flowers and landscaping the front lawn. The house beautification interest group spearheaded the project.

**KENTUCKY BETA** Cynthia Duckro was one of 13 candidates in the 48th annual Christmas Seal Contest. Funds raised by the contest support programs and services of the American Lung Association.

The **TEXAS EPSILON** Chapter at the University of North Texas won second place in Greek Week. One event of the week was a pyramid-building competition. The chapter was paired with the men of Kappa Sigma, Sigma Nu and Sigma Phi Epsilon fraternities to build the quickest pyramid.

In the spirit of sisterhood, members of the **ILLINOIS EPSILON** Chapter at Northwestern University traveled to Purdue University to visit the Indiana Delta Chapter. Upon arrival, Illinois Epsilons were greeted with a Cookie Shine. The group of Pi Phis enjoyed a tailgate party and a football game together.

The **TENNESSEE DELTA** Chapter at the University of Memphis sponsored a pie sale to benefit Arrowmont. Chapter members volunteered at a local school on Halloween, passing out candy in full costume. The chapter also won the intramural football championship.

**FLORIDA DELTAS** received the Frances Reitz Service Award from the University of Florida. The chapter was rewarded for having the most successful philanthropy and community service efforts. This Halloween, chapter members painted children's faces at an annual panhellenic service project.

**INDIANA EPSILONS** enjoyed a movie and pizza party with Special Olympic house guests. During DePauw University's Annual State-wide Special Olympics Basketball Tournament, each sorority hosts a team in its house and cheers the athletes on during the games.

**ABOVE LEFT:** To celebrate their initiation, new members of the **Virginia Theta Chapter** at Washington and Lee University, participated in a chapter-wide sisterhood hike on the Appalachian trail.

**ABOVE CENTER:** **Washington Alphas** Jocelyn Swinhoe, Karissa Rose, Bridget Aaby and Pam Bunger prepare for the "Seattle Rain" themed rush party at the University of Washington.

**ABOVE:** During Homecoming at the University of Wisconsin, the **Wisconsin Alpha Chapter** received top honors for their participation in the Red Cross Blood Drive, Badger Games, Homecoming sales and the spirit parade.

## Coming Soon ...

Future issues of *The ARROW* will feature the following Collegiate News topics:

Summer 1998—  
Community Service

Fall 1998—  
Accomplishments  
of chapters and  
individual members.



# Panhellenic

## Update

## A Shared Commitment

by Beth Mannle, Alpha Delta Pi  
Third Alternate NPC Delegate

The 55th Biennial Session of the National Panhellenic Conference convened at the Norfolk Waterside Marriott in a rain-drenched Norfolk, Virginia October 16-19. In conjunction with the theme, "NPC is a Shared Commitment," delegates and representatives from the 26 member groups met in committees, general sessions and specialized workshops to further the stated aims and ideals of the Conference.

Pennsylvania Beta Jean Wirths Scott, Chairman of NPC, spoke of the incredible journey of the past biennium. She highlighted many accomplishments, which include the following:

- Developmental stages of a new values-based drug program focusing on risk management with assistance from the Higher Education Center for Alcohol and other Drug Prevention.
- "Something of Value," the values-based risk management program, has been presented on six campuses, at three regional conferences and recently received a grant of \$35,000 to fund future programs.
- Results of the study commissioned by NPC and National Interfraternity Conference announced in 1996 revealed that Greek members donate more money to charitable, religious and educational organizations in their respective communities, and



Representing Pi Beta Phi at NPC were, back row: Risk Management Officer Michelle Murrell Goseco, Grand Vice President of Finance Lou Ann Montgomery Carter, Director of Chapter House Corporations West Ivonna Peterson McCabe, Grand Vice President of Collegians Sarah Ruth Mullis, Director of Chapter House Corporations East Patricia Emens Anderson, Executive Director Renée Ross Mercer, NPC Coordinator of Educational Programs Merrit Olsen, Assistant Executive Director Maureen Wilson Adams, Director of Finance Karen Consalus Price. Front row: Second Alternate Delegate Ellie Moore Merrick, First Alternate Delegate Carol Inge Warren, Grand President Beth van Maanen Beatty, NPC Chairman Jean Wirths Scott and Conference Parliamentarian Janice Shrader Falk.

Greek member participation in community organizations is greater than among non-Greeks. The study will continue for another two years.

- Support implementation of substance-free housing at colleges and universities through participation in an NPC/NIC Joint Commission.
- NPC alumnae panhellenics provide scholarship aid in excess of \$340,000.
- Membership in the 26 NPC groups increased by nearly 2,000 during the preceding year.

During each scheduled session, delegates voted on resolutions and heard reports from standing committees. Resolutions passed during the session included: support of men's fraternities who have implemented the substance-free housing policy; incorporation of the "Year of the Scholar" programming; authorization of financial support to the Research Initiative 1997; and a resolution reaffirming the NPC's position against hazing. A special resolution, expressing thanks and gratitude to the National Panhellenic Editors from the Conference, was passed. The editors serve an important role in the publication of numerous printed projects of NPC.



Concurrent meetings of international presidents, editors of fraternity magazines and executive directors were held. Collegiate vice presidents and housing/financial officers attended workshops to share ideas and resources.

Other highlights of the Biennial Session included: a luncheon celebrating the centennial anniversaries of Alpha Omicron Pi and Kappa Delta; a luncheon honoring the outstanding alumnae panhellenic club in Clear Lake, Texas; an address by Dr. Robert Delonian, National President of Phi Delta Theta, about his fraternity's initiative of implementing substance free houses by the year 2000; and "In the Company of Women: Risk and Responsibility," part of the NPC "Something of Value" program, which featured an enactment of a national organization on trial in a civil suit resulting from hazing. Guest attorneys for the presentation were California Eta Michelle Murrell Goseco and Jean Schmidt of Kappa Kappa Gamma.

The formal session concluded with an awards banquet and the installation of the 1997-99 executive officers. Officers installed for the biennium are Lissa Bradford of Kappa Alpha Theta as Chairman, Marian Williams of Kappa Kappa Gamma as Secretary and Sally Grant of Alpha Phi as Treasurer. Incoming Chairman Lissa Bradford challenged attendees to remember that "we are in the women's fraternity business and we do it best. NPC is a shared commitment to raise Greek life to a higher plane."

## NPC Statement of Position on Hazing

### *Why?*

Hazing has been a continuing concern of the National Panhellenic Conference and its member fraternities, and numerous resolutions have been adopted through the years.

The practice of hazing has not been eliminated from all member group chapters and colonies. Hazing remains a detriment to the well-being of the college fraternity system.

### *What?*

Hazing, in any of its forms or definitions, is contrary to the founding principles of the member fraternities of the National Panhellenic Conference.

Hazing is defined as any action or situation with or without consent, which recklessly, intentionally or unintentionally endangers the mental or physical health or safety of a student, or creates risk of injury, or causes discomfort, embarrassment, harassment or ridicule, or which willfully destroys or removes public or private property for the purpose of initiation or admission into or affiliation with, or as a condition for continued membership in a chapter or colony of an NPC member fraternity.

Hazing activities and situations include, but are not limited to, creation of excessive fatigue; physical and psychological shocks; wearing publicly apparel which is conspicuous and not normally in good taste; engaging in public stunts and jokes; participating in treasure or scavenger hunts, morally degrading or humiliating games and activities, late night sessions which interfere with scholastic activities or normal sleep patterns, and any other activities which are not consistent with fraternal law, ritual or the regulations and policies of the member fraternity or the educational institution.

### *How?*

All member groups of the National Panhellenic Conference continue to affirm their policies and/or statutes on hazing and inform their membership of this NPC position on hazing through contact to all local, regional and international officers, mailings from headquarters to each chapter and chapter alumnae advisers, and through international magazines.

The National Panhellenic Conference immediately distributes this statement to all college and alumnae Panhellenics and to appropriate media sources, and include this resolution in the manual of information and in appropriate conference publications when they are printed.



# Rush

Someone provided a recommendation for you. Now is the time for you to return that favor to Pi Beta Phi.

## How You Can Help

### What to send

➤ Fill out a Rush Information Form (RIF) on any prospective rushee you wish to sponsor for membership in Pi Beta Phi. See form on page 25 in this issue of *The ARROW*. The form may be copied or additional forms are available from Central Office, 7730 Carondelet, Suite 333, St. Louis, MO 63105, (314) 727-7338.

➤ Return the completed form to the Chapter Membership Chairman of the appropriate chapter. Collegiate chapters are listed in this issue of *The ARROW* beginning on page 26.

➤ Please send the RIF early. Complete information about the rushee's qualifications is essential. If possible, send a picture of the rushee.

➤ Although only one RIF is needed for each rushee, letters are welcome from all alumnae who may wish to write and offer their comments.

➤ If you know of a legacy going through rush, please fill out a Legacy Introduction Form found on the bottom of this page. The Legacy Introduction Form **does not** take the place of a RIF.

➤ Save the Spring issue of *The ARROW* with all 1998-99 rush information. This information **will not** be repeated in the Summer issue of the magazine.

### Remember Panhellenic Rules

➤ Do not call the family or the young woman (rushee) for information.

➤ Do use the information gathered by the alumnae panhellenic group in your city, if available. If the rushee has not filled out a panhellenic information form, please encourage her to do so.

➤ Alumnae are prohibited from sending food or gifts of any kind to a chapter on behalf of a rushee. Breaking Panhellenic rules may cause the collegiate chapter to be penalized.

➤ Do not contact the collegiate members during rush.

## Legacy Introduction Form

This form is provided as a convenience for Pi Phi alumnae to introduce legacies to collegiate chapters. Please complete the following to ensure that the chapter is aware of your legacy. Return this form to the Chapter Membership Chairman of the appropriate chapter. Please remember this introduction **does not** take the place of a Rush Information Form.

Date: \_\_\_\_\_ Chapter: \_\_\_\_\_

College or University: \_\_\_\_\_

This is to inform you that my:  granddaughter  daughter  sister

Name: \_\_\_\_\_

From: \_\_\_\_\_

Will be/is a student on your campus as a:  Freshman  Sophomore  Junior  Senior

Her school address (if known) will be/is: \_\_\_\_\_

City State Zip

Signed: \_\_\_\_\_

Name (First, Maiden, Last)

Year & Chapter of Initiation



# Rush Information Form (RIF)

(To be used by alumnae members only)

Name of Rushee \_\_\_\_\_ Attending \_\_\_\_\_ College \_\_\_\_\_

Home Address \_\_\_\_\_  
Street City State Zip

Year in College:  Freshman  Sophomore  Junior  Senior

If transfer student: College attended \_\_\_\_\_ College GPA \_\_\_\_\_

High School attended \_\_\_\_\_  
Name City State Zip

Class Size \_\_\_\_\_ Rank \_\_\_\_\_ GPA \_\_\_\_\_ SAT/ACT (if known) \_\_\_\_\_

Parent or Guardian \_\_\_\_\_

Pi Beta Phi Relatives \_\_\_\_\_  
(sister, mother, grandmother)

Other Greek Affiliated Relatives \_\_\_\_\_

Please check ONE of the following:

Wish to highly recommend  Wish to recommend

Please check ONE of the following:

Known personally by an alumna (if so, how long?) \_\_\_\_\_

Only factual information included. Source of information \_\_\_\_\_

Other \_\_\_\_\_

Signed \_\_\_\_\_  
Individual Pi Beta Phi Alumna

Address \_\_\_\_\_  
Street City State Zip

Telephone \_\_\_\_\_ Date \_\_\_\_\_  
Area Code Number

LIST SCHOOL AND COMMUNITY ACTIVITIES AND HONORS: (Attach another sheet if needed.)  
Comment on special interests, talents, leadership qualities, personality.



# Chapter Addresses and Rush Dates

## 1998-99 Rushing Season

### Alabama

**ALABAMA ALPHA**  
**BIRMINGHAM-SOUTHERN COLLEGE**  
Box 549059  
Birmingham, AL 35254  
*Late August*

**ALABAMA BETA**  
**UNIVERSITY OF ALABAMA**  
PO Box 11067  
Tuscaloosa, AL 35486  
*Mid-August*

**ALABAMA GAMMA**  
**AUBURN UNIVERSITY**  
Boyd Hall (Dorm J)  
Auburn, AL 36830  
*Mid-September*

### Arizona

**ARIZONA ALPHA**  
**UNIVERSITY OF ARIZONA**  
1035 North Mountain Avenue  
Tucson, AZ 85719  
*Mid-August*

**ARIZONA BETA**  
**ARIZONA STATE UNIVERSITY**  
340 East University #171  
Tempe, AZ 85281  
*Late August*

**ARIZONA GAMMA**  
**NORTHERN ARIZONA UNIVERSITY**  
PO Box 23590  
Flagstaff, AZ 86011  
*Mid-August*

### Arkansas

**ARKANSAS ALPHA**  
**UNIVERSITY OF ARKANSAS**  
502 West Maple  
Fayetteville, AR 72701  
*Mid-August*

**ARKANSAS BETA**  
**UNIVERSITY OF ARKANSAS-LITTLE ROCK**  
3117 South Taylor  
Little Rock, AR 72204  
*Mid-September*

### California

**CALIFORNIA ALPHA**  
**STANFORD UNIVERSITY**  
PO Box 4342  
Stanford, CA 94309  
*Early April 1998*

**CALIFORNIA BETA**  
**UNIVERSITY OF CALIFORNIA, BERKELEY**  
2325 Piedmont  
Berkeley, CA 94704  
*Early September*

**CALIFORNIA GAMMA**  
**UNIVERSITY OF SOUTHERN CALIFORNIA**  
667 West 28th Street  
Los Angeles, CA 90007  
*Late August*

**CALIFORNIA DELTA**  
**UNIVERSITY OF CALIFORNIA, LOS ANGELES**  
700 Hilgard  
Los Angeles, CA 90024  
*Late September*

**CALIFORNIA EPSILON**  
**SAN DIEGO STATE UNIVERSITY**  
5080 College Place  
San Diego, CA 92115  
*Early September*

**CALIFORNIA ZETA**  
**UNIVERSITY OF CALIFORNIA, SANTA BARBARA**  
763 Camino Pescadero  
Goleta, CA 93117  
*Late September*

**CALIFORNIA ETA**  
**UNIVERSITY OF CALIFORNIA, IRVINE**  
Box 46-Arroyo  
Irvine, CA 92612  
*Late September*

**CALIFORNIA THETA**  
**UNIVERSITY OF CALIFORNIA, DAVIS**  
445 Russell Boulevard  
Davis, CA 95616  
*Early September*

**CALIFORNIA IOTA**  
**CALIFORNIA STATE UNIVERSITY, CHICO**  
413 West Fourth Street  
Chico, CA 95928  
*Early September*

**CALIFORNIA KAPPA**  
**UNIVERSITY OF CALIFORNIA, SAN DIEGO**  
7770 Regents Road #113-238  
San Diego, CA 92122-1937  
*Late September*

**CALIFORNIA LAMBDA**  
**UNIVERSITY OF CALIFORNIA, RIVERSIDE**  
1020 Linden Street #12  
Riverside, CA 92507  
*Late September*

**CALIFORNIA MU**  
**PEPPERDINE UNIVERSITY**  
24255 Pacific Coast Highway  
Malibu, CA 90263  
*Late September*

### Colorado

**COLORADO ALPHA**  
**UNIVERSITY OF COLORADO**  
890 11th Street  
Boulder, CO 80302  
*Late August*

**COLORADO GAMMA**  
**COLORADO STATE UNIVERSITY**  
625 West Lake Street  
Fort Collins, CO 80521  
*Late August*

**COLORADO DELTA**  
**COLORADO SCHOOL OF MINES**  
910 13th Street  
Golden, CO 80401  
*Mid-August*

### Connecticut

**CONNECTICUT ALPHA**  
**UNIVERSITY OF CONNECTICUT**  
10 Whitney Road  
Storrs, CT 06268  
*Late January 1999*

**CONNECTICUT BETA**  
**YALE UNIVERSITY**  
PO Box 202319  
New Haven, CT 06520  
*Mid-September*

### Florida

**FLORIDA ALPHA**  
**STETSON UNIVERSITY**  
Box 8237 Stetson University  
DeLand, FL 32720  
*Mid-October*

**FLORIDA BETA**  
**FLORIDA STATE UNIVERSITY**  
519 West Jefferson Street  
Tallahassee, FL 32301  
*Mid-August*

**FLORIDA DELTA**  
**UNIVERSITY OF FLORIDA**  
37 West Fraternity Row  
Gainesville, FL 32603  
*Mid-August*

**FLORIDA EPSILON**  
**UNIVERSITY OF CENTRAL FLORIDA**  
4304 Greek Park Drive  
Orlando, FL 32816  
*Mid-August*

### Georgia

**GEORGIA ALPHA**  
**UNIVERSITY OF GEORGIA**  
886 South Milledge Avenue  
Athens, GA 30605  
*Mid-August*

### Idaho

**IDAHO ALPHA**  
**UNIVERSITY OF IDAHO**  
507 Idaho Avenue  
Moscow, ID 83843-1902  
*Mid-August*

### Illinois

**ILLINOIS ALPHA**  
**MONMOUTH COLLEGE**  
318 North 9th Street  
Monmouth, IL 61462  
*Late August*

**ILLINOIS BETA-DELTA**  
**KNOX COLLEGE**  
Box 1737, Knox College  
Galesburg, IL 61401  
*January 1999*



**PENNSYLVANIA ETA**  
**LAFAYETTE COLLEGE**  
Farinon Center, Box 9485  
Easton, PA 18042-1783  
*Early September*

**PENNSYLVANIA THETA**  
**VILLANOVA UNIVERSITY**  
Connelly Center, 800 Lancaster Avenue  
Villanova, PA 19085  
*January 1999*

**PENNSYLVANIA IOTA**  
**UNIVERSITY OF PENNSYLVANIA**  
4027 Walnut Street  
Philadelphia, PA 19104  
*January 1999*

**PENNSYLVANIA KAPPA**  
**LEHIGH UNIVERSITY**  
8 Duh Drive #224  
Bethlehem, PA 18015  
*January 1999*

## South Dakota

**SOUTH DAKOTA ALPHA**  
**UNIVERSITY OF SOUTH DAKOTA**  
118 North Plum  
Vermillion, SD 57069  
*Mid-September*

## Tennessee

**TENNESSEE BETA**  
**VANDERBILT UNIVERSITY**  
118 24th Avenue South  
Nashville, TN 37212  
*Early January 1999*

**TENNESSEE GAMMA**  
**UNIVERSITY OF TENNESSEE**  
1531 Cumberland Avenue, Suite 301  
Knoxville, TN 37916  
*Mid-August*

**TENNESSEE DELTA**  
**UNIVERSITY OF MEMPHIS**  
PO Box 528035, Panhellenic Building  
Memphis, TN 38152  
*Mid-August*

## Texas

**TEXAS ALPHA**  
**UNIVERSITY OF TEXAS**  
2300 San Antonio  
Austin, TX 78705  
*Late August*

**TEXAS BETA**  
**SOUTHERN METHODIST UNIVERSITY**  
3101 Daniel  
Dallas, TX 75205  
*Early January 1999*

**TEXAS GAMMA**  
**TEXAS TECH UNIVERSITY**  
#17 Greek Circle  
Lubbock, TX 79424  
*Mid-August*

**TEXAS DELTA**  
**TEXAS CHRISTIAN UNIVERSITY**  
PO Box 290943  
Fort Worth, TX 76129  
*Late August*

**TEXAS EPSILON**  
**UNIVERSITY OF NORTH TEXAS**  
PO Box 13187  
Denton, TX 76203  
*Mid-August*

**TEXAS ZETA**  
**BAYLOR UNIVERSITY**  
PO Box 85618  
Waco, TX 76798  
*Early January 1999*

**TEXAS ETA**  
**TEXAS A & M**  
1601 Munson Avenue  
College Station, TX 77840  
*Late August*

## Utah

**UTAH ALPHA**  
**UNIVERSITY OF UTAH**  
1443 East 100 South  
Salt Lake City, UT 84102  
*Late August*

## Vermont

**VERMONT BETA**  
**UNIVERSITY OF VERMONT**  
369 South Prospect Street  
Burlington, VT 05401  
*Mid-September*

## Virginia

**VIRGINIA GAMMA**  
**COLLEGE OF WILLIAM & MARY**  
C.S. Box 4232, PO Box 8793  
Williamsburg, VA 23186  
*Early September*

**VIRGINIA DELTA**  
**OLD DOMINION UNIVERSITY**  
Office of Student Act. Webb 200  
Norfolk, VA 23508-0519  
*Early September*

**VIRGINIA EPSILON**  
**UNIVERSITY OF VIRGINIA**  
1509 Grady Avenue  
Charlottesville, VA 22903  
*January 1999*

**VIRGINIA ZETA**  
**VIRGINIA POLYTECHNIC & STATE UNIVERSITY**  
301 SPH-E  
Blacksburg, VA 24060  
*Mid-January 1999*

**VIRGINIA ETA**  
**UNIVERSITY OF RICHMOND**  
PO Box 55  
Richmond, VA 23173  
*Mid-January 1999*

**VIRGINIA THETA**  
**WASHINGTON & LEE UNIVERSITY**  
PO Box 1559  
Lexington, VA 24450  
*Early January 1999*

## Washington

**WASHINGTON ALPHA**  
**UNIVERSITY OF WASHINGTON**  
4548 17th NE  
Seattle, WA 98105  
*Mid-September*

**WASHINGTON BETA**  
**WASHINGTON STATE UNIVERSITY**  
NE 825 Linden  
Pullman, WA 99163  
*Mid-August*

**WASHINGTON GAMMA**  
**UNIVERSITY OF PUGET SOUND**  
1500 North Warner  
Tacoma, WA 98416  
*Mid-January 1999*

## West Virginia

**WEST VIRGINIA ALPHA**  
**WEST VIRGINIA UNIVERSITY**  
1493 University Avenue  
Morgantown, WV 26505  
*Mid-September*

## Wisconsin

**WISCONSIN ALPHA**  
**UNIVERSITY OF WISCONSIN**  
130 Langdon Street  
Madison, WI 53703  
*Early September*

**WISCONSIN DELTA**  
**MARQUETTE UNIVERSITY**  
Box 139 ORC, AMU 140, PO Box 1881  
Milwaukee, WI 53201  
*Mid-January 1999*

## Wyoming

**WYOMING ALPHA**  
**UNIVERSITY OF WYOMING**  
1502 East Sorority Row  
Laramie, WY 82070-3418  
*Mid-August*

## Canada

**ALBERTA ALPHA**  
**UNIVERSITY OF ALBERTA**  
11019-88 Avenue  
Edmonton, AB T6G 0Z3 CANADA  
*Early September*

**ONTARIO ALPHA**  
**UNIVERSITY OF TORONTO**  
220 Beverley Street  
Toronto, ON M5T 1Z3 CANADA  
*Late September*

**ONTARIO BETA**  
**UNIVERSITY OF WESTERN ONTARIO**  
293 Central Avenue  
London, ON N6B 2L9 CANADA  
*Late September*

**ONTARIO GAMMA**  
**UNIVERSITY OF GUELPH**  
Box 3008 Park Mall Postal Outlet  
2 Quebec Street  
Guelph, ON N1H 8J5 CANADA  
*Late September*





# Directions

Where friendships grow  
*Pi Beta Phi's Mentoring & Networking Program*

## What is Directions?

Directions is Pi Phi's Mentoring and Networking Program, a nation-wide network of alumnae who are willing to help other Pi Phis with information, contacts and referrals. More than 3,500 Pi Phi mentors are now registered in the Directions database. In the last six months alone, 343 Pi Phis have requested help from mentors participating in the Directions Program.

## What can Directions do for me?

Directions can:

- Provide networking and mentoring services.
- Help alumnae and graduating seniors connect with other Pi Phis.
- Supply mentors who are willing to pass along knowledge, experience and friendship.
- Support those seeking career connections, contacts and referrals.
- Connect members to other Pi Phis and alumnae clubs.
- Spread information about school systems, churches, physicians and volunteer and cultural opportunities to relocating Pi Phis.

Directions cannot:

- Serve as a job placement service.
- Find employment for alumnae.

## Are you a part of Directions?

To get involved in the Directions Program complete the Directions form and send it to Central Office.



# Directions

Where friendships grow

*Pi Beta Phi's Mentoring & Networking Program*

Name: \_\_\_\_\_ Maiden Name: \_\_\_\_\_

Home Address: \_\_\_\_\_

City/State/Zip: \_\_\_\_\_

Phone: (home) \_\_\_\_\_ (work) \_\_\_\_\_

Fax: \_\_\_\_\_ e-mail: \_\_\_\_\_

Chapter: \_\_\_\_\_ Year of Initiation: \_\_\_\_\_

Check One and complete information below:

\_\_\_\_\_ I would like to help other Pi Phis. Please add my name, mentoring information and career cluster (if appropriate) to the program. I understand that this information may be released to any Pi Phi who requests the information.

\_\_\_\_\_ Help! I am entering or re-entering the job market, and/or moving to a new community. I would like some mentoring information from Pi Phi alumnae. Enclosed is my **\$5.00 check payable to Pi Beta Phi** for which I may request up to three locations.

CHECK APPROPRIATE MENTORING CATEGORY:

Career

City/Community Information

*(If career, complete occupational cluster information below.)*

City: \_\_\_\_\_ Closest metropolitan area: \_\_\_\_\_

Occupation Cluster(s): \_\_\_\_\_ (See listing below)

Occupation Title/Description: \_\_\_\_\_

OCCUPATION CLUSTERS

- |   |   |
|---|---|
| <b>A. Agriculture &amp; Environment</b><br>Conservation, Forestry, Horticulture, Landscaping, Recycling, Wildlife   | <b>J. Health &amp; Medicine</b><br>Dentistry, Nursing, Pharmacy, Physician, Psychology, Therapists, Veterinary, Dietitian, Optometry, Pathology, Dermatology, Sales, Consultant |
| <b>B. Architecture, Engineering &amp; Design</b><br>Drafting, Graphic and Interior Design, Surveyor, All Engineers, Architect                               | <b>K. Home Economics &amp; Family Consumer Science</b><br>Child and Daycare Service, Family Counseling, Food Marketing and Development, Homemaker                               |
| <b>C. Communications</b><br>Advertising, Broadcasting, Journalism, Media, Public Relations, Publishing, Reporting, Writing                                  | <b>L. Hospitality</b><br>Catering, Chef, Conventions, Food Services, Hotel, Restaurant  |
| <b>D. Computer &amp; Science</b><br>All Computer/Technical Support, Data Processing, All Scientists   | <b>M. Legal &amp; Law Enforcement</b><br>Attorney, Court Reporting, Judicial, Paralegal, Police   |
| <b>E. Construction &amp; Trades</b><br>Automotive, Electrical, Mechanical, Painting, Plumbing, Textile  | <b>N. Management &amp; Administration</b><br>Administrative Support, Clerical, Human Resources, Personnel, Public Relations, Company President                                  |
| <b>F. Cultural &amp; Arts</b><br>Crafts, Entertainment, Film, Museums, Music, Performing, Photography, Theater, Actress                                     | <b>O. Manufacturing</b><br>Equipment Maintenance, Factory Operation, Plant Management   |
| <b>G. Education &amp; Counseling</b><br>All Levels of Education, Employment Services, Librarian, Social Work, Administration, Counselor                     | <b>P. Recreation, Leisure &amp; Travel</b><br>Airlines, Fitness Sports, Tourism, Public Relations   |
| <b>H. Finance</b><br>Accounting, Banking, Consulting, Economist, Investments, Math, Statistics, Auditor   | <b>Q. Retail</b><br>Consumer, Design, Fashion, Merchandising, Manager   |
| <b>I. Government, Non-profit &amp; Religion</b><br>Military, Ministry, Public & Social Services, Volunteer, FBI, Legislative Aide, Fund-Raising, Translator | <b>R. Sales &amp; Marketing</b><br>Buyer, Import/Export, Insurance, Real Estate, Representative, Research, Wholesale, Telemarketing, Marketing, Manager, Sales                  |
|   | <b>S. Transportation &amp; Moving</b><br>Shipping & Freight, Trucking   |

Return to: Directions Program

Pi Beta Phi Central Office, 7730 Carondelet, Suite 333, St. Louis, MO 63105



# Fraternity Directory

## Former Grand Presidents

- ELIZABETH TURNER ORR** - Oregon Alpha, 9450 SW Brentwood Place, Tigard, OR 97224  
**JEAN WIRTHS SCOTT** - Pennsylvania Beta, 1186 Cedarwood Drive, Moraga, CA 94556  
**CAROLYN HELMAN LICHTENBERG** - Ohio Alpha, 1064 Westbrooke Way, Atlanta, GA 30319  
**JO ANN MINOR RODERICK** - Oklahoma Beta, 701 Greystone, Stillwater, OK 74074

## Officer Emerita

- GRAND TREASURER EMERITA** - Orpha O'Rourke Coenen, Indiana Delta, PO Box 8, Little Chute, WI 54140

## Grand Council

- GRAND PRESIDENT** - Beth van Maanen Beatty, Texas Gamma, 1506 San Sebastian Lane, Nassau Bay, TX 77058  
**GRAND VICE PRESIDENT OF COLLEGIANS** - Sarah Ruth Mullis, South Carolina Alpha, 10 Kings Tavern Place, Atlanta, GA 30318  
**GRAND VICE PRESIDENT OF ALUMNAE** - Carolyn Pavletich Lesh, Texas Delta, #1 Forest Park, Richardson, TX 75080  
**GRAND VICE PRESIDENT OF FINANCE** - Lou Ann Montgomery Carter, Oklahoma Alpha, Box 3925, 8 Barberry Lane, Wilmington, DE 19807  
**GRAND VICE PRESIDENT OF MEMBERSHIP** - Kay Knittle Brock, Colorado Alpha, 5459 West 85th Terrace, Shawnee Mission, KS 66207  
**GRAND VICE PRESIDENT OF PHILANTHROPIES** - Lois Huston Ross, Indiana Delta, 4531 Royal Ridge Way, Dayton, OH 45429  
**GRAND VICE PRESIDENT OF PROGRAM DEVELOPMENT** - Maurine Hager Jones, Montana Alpha, 14 Dogwood Court, Walnut Creek, CA 94598

## Directors

- DIRECTOR OF ACADEMICS** - Fran DeSimone Becque, New York Alpha, 2608 Kent Drive, Carbondale, IL 62901  
**DIRECTOR OF ALUMNAE ADVISORY COMMITTEES** - Linda Noel Ibsen, Colorado Beta, 5241 Lichen Place, Boulder, CO 80301  
**DIRECTOR OF ALUMNAE COMMUNICATIONS** - Emily Russell Tarr, Texas Beta, 1439 Sugar Creek Boulevard, Sugar Land, TX 77478  
**DIRECTOR OF ALUMNAE EXTENSION** - Mary Lu Pendergrast Meixell, Tennessee Delta, 4926 Wheatstone Drive, Fairfax, VA 22032

**DIRECTOR OF ALUMNAE PROGRAMMING** - Susan Landreth Fry, Texas Delta, PO Box 1266, Edwards, CO 81632

### DIRECTOR OF CHAPTER HOUSE

**CORPORATIONS EAST** - Patricia Emens Anderson, South Carolina Alpha, 1903 Petit Bois Street N, Jackson, MS 39211

### DIRECTOR OF CHAPTER HOUSE CORPORATIONS

**WEST** - Ivonna Peterson McCabe, Washington Gamma, 1328 North Jackson, Tacoma, WA 98406

### DIRECTOR OF CHAPTER SUPPORT, REGION I -

Kristin Noer Olson, Indiana Delta, 2250 Wessman Parkway, Cherry Valley, IL 61016

### DIRECTOR OF CHAPTER SUPPORT, REGION II -

Melissa Dates Schmidt, Ohio Alpha, 12533 Philmont Drive, Herndon, VA 20170

### DIRECTOR OF CHAPTER SUPPORT, REGION III -

Jane Landreth Russell, Arizona Alpha, 5711 N 73rd Place, Scottsdale, AZ 85250

### DIRECTOR OF COLLEGIATE EXTENSION AND

**RUSH** - Julie Geiger Shannon, Kentucky Beta, 29 Lenape Trail, Chatham, NJ 07928

### DIRECTOR OF COLLEGIATE PROGRAMMING -

Joanne MaGill Arnold, Texas Beta, 3264 Spinnaker Drive, Avon Lake, OH 44012

### DIRECTOR OF FINANCE -

Karen Consalus Price, Missouri Alpha, 1504 Kingstream Circle, Herndon, VA 20170

### DIRECTOR OF FRATERNITY EDUCATION -

Ruth Neel Noble, California Delta, 2564 Via Carrillo, Palos Verdes Estates, CA 90274

### DIRECTOR OF MEMBERSHIP -

Ann Johnson Gunn, Louisiana Beta, 2207 Salisbury Lane, Houston, TX 77019

## Appointed Officers

### NATIONAL PANHELLENIC CONFERENCE

**DELEGATE** - Jean Wirths Scott, Pennsylvania Beta, 1186 Cedarwood Drive, Moraga, CA 94556

### ANNIVERSARY CELEBRATION COORDINATOR -

Alison Hennig Moore, Florida Gamma, 2525 Sycamore, Colorado Springs, CO 80906

### CONVENTION COORDINATOR -

Barbara Ehni Van Luven, Indiana Epsilon, 2 Portland Court, St. Louis, MO 63108

### CONVENTION SITE COORDINATOR -

Martha Sherman Malsbary, Indiana Delta, 10014 Craig Drive, Overland Park, KS 66212

### DIRECTIONS PROGRAM CHAIRMAN -

Ann Johnson Gunn, Louisiana Beta, 2207 Salisbury Lane, Houston, TX 77019

**ELECTIONS COORDINATOR** - Jo Ann Minor Roderick, 701 Greystone, Stillwater, OK 74074

**FRATERNITY HISTORIAN** - Marilyn Simpson Ford, Nebraska Beta, 268 Underwood Drive NW, Atlanta, GA 30328

### GRADUATE CONSULTANT COORDINATOR -

Jennifer Plagman, Iowa Gamma, 7730 Carondelet, Suite 333, St. Louis, MO 63105

### MUSIC CHAIRMAN -

Suzanne Chapman Lawson, Oklahoma Beta, 44 Rockinghorse Road, Rancho Palos Verde, CA 90275

### ASSISTANT MUSIC CHAIRMAN -

Jan Kinnune Hillesland, Washington Alpha, PO Box 627, Grapeview, WA 98546

### PARLIAMENTARIAN -

Janice Shrader Falk, Nebraska Beta, RR 1, Box 10, Fort Calhoun, NE 68023

### RISK MANAGEMENT OFFICER -

Michelle Murrell Goseco, California Eta, 8 Sepulveda, Rancho Santa Margarita, CA 92688

### SUPERVISOR OF CHAPTER HISTORIES -

Penny Heyl Moss, Kansas Beta, 14024 Pinnacle Drive, Wichita, KS 67230

## Special Officers

### TRAVELING GRADUATE CONSULTANTS -

Barbra Boyen, Oregon Gamma; Tillie Galan, Florida Delta; Annie Jones, Nebraska Beta; Katrina Kuehn, California Beta; Kristin Loupee, Iowa Zeta; Erica Wood, California Zeta

### RESIDENT GRADUATE CONSULTANTS -

Amy Dailey, Virginia Zeta; Katie Matson, Oregon Alpha; Sheila McKenna, Virginia Eta; Erin Walter, Iowa Gamma

## Pi Beta Phi Central Office

7730 Carondelet, Suite 333, St. Louis, MO 63105 (314) 727-7338;

FAX: (314) 727-8049

E-mail: [pibetaphi@compuserve.com](mailto:pibetaphi@compuserve.com)

Web site: [www.pibetaphi.org](http://www.pibetaphi.org)

**EXECUTIVE DIRECTOR** - Renée Ross Mercer, Iowa Zeta

**CONTROLLER** - Mary Mitch Mullendore, Illinois Zeta

### ARROW EDITOR/COMMUNICATIONS

**COORDINATOR** - Elizabeth Gilkison Cannon, Missouri Alpha

**PI PHI EXPRESS** - (800) 322-1867



# Fraternity Directory

## Fraternity Insurance Representatives

**PROPERTY AND LIABILITY INSURANCE** - Conseco Risk Management, Inc., PO Box 1910, Carmel, IN 46032

**MEDICAL INSURANCE** - Coverdell & Company, 2622 Piedmont Road NE, Atlanta, GA 30324

## Board of Trustee Funds

**CHAIRMAN** - Lou Ann Montgomery Carter, Oklahoma Alpha, Box 3925, 8 Barberry Lane, Wilmington, DE 19807

## Arrowmont

**Arrowmont School of Arts and Crafts** - Box 567, Gatlinburg, TN 37738 (423) 436-5860

**DIRECTOR, ARROWMONT SCHOOL OF ARTS AND CRAFTS** - Sandra Blain, Arizona Beta

## Holt House

402 East 1st Avenue, Monmouth, IL 61462

**HOSTESS**—Jane Mears Warfield, Illinois Alpha  
**HOURS:** By appointment only.

## Pi Beta Phi Foundation

**Office** - 7730 Carondelet, Suite 333, St. Louis, MO 63105 (314) 727-7338; **FAX:** (314) 727-1255

### BOARD OF TRUSTEES

**PRESIDENT** - Betty Blades Lofton, Indiana Gamma, 9060 Pickwick Drive, Indianapolis, IN 46260

**DIRECTOR** - Lynn M. Raney, Pi Beta Phi Foundation, 7730 Carondelet, Suite 333, St. Louis, MO 63105

## Foundation Committees

### ALUMNAE SCHOLARSHIP COMMITTEE

**CHAIRMAN** - Anne Easterling Cain, 5820 Brighton Place, New Orleans, LA 70131

### EMMA HARPER TURNER FUND COMMITTEE

**CHAIRMAN** - Anne Busch Hills, 440 Meadowview Drive, La Canada, CA 91011

### GRADUATE FELLOWSHIP COMMITTEE

**CHAIRMAN** - Marjorie Young Wittich, 256 East Main Street, Mount Sterling, OH 43143

### UNDERGRADUATE SCHOLARSHIP COMMITTEE

**CHAIRMAN** - Mary Anne Riddick Cesario, 8850 Oakmont Drive, Santa Rosa, CA 95409

## Fraternity Committees

### CANADIAN PHILANTHROPIES COMMITTEE

**CHAIRMAN** - Helen Steeves Jull, 1318 Quebec Avenue SW, Calgary AB T2T 1G2 CANADA

### CAROLYN HELMAN LICHTENBERG CREST AWARD COMMITTEE

**CHAIRMAN** - Carolyn Pavletich Lesh, #1 Forest Park, Richardson, TX 75080

### CONVENTION COMMITTEE

**CHAIRMAN** - Donna Coffman Dawson, 11635 Greenbay Drive, Houston, TX 77024

### HOLT HOUSE COMMITTEE

**CHAIRMAN** - Alice Gill Goshorn, 4921 East State Road 252, Franklin, IN 46131

### LEGISLATIVE COMMITTEE

**CHAIRMAN** - Dee Rippetoe Richardson, 2801 Camelot Drive, Oklahoma City, OK 73120

### LINKS TO LITERACY COMMITTEE

**CHAIRMAN** - Jean Egmon, 1625 Sheridan Road, #212, Wilmette, IL 60091

### NOMINATING COMMITTEE

**CHAIRMAN** - Robin McPherson Rohrback, 2300 Riviera Drive, Vienna, VA 22181

### STUDENT LOANS COMMITTEE

**CHAIRMAN** - Nancy Fogle Pollard, 120 Hume Lane, Bakersfield, CA 93309

## Pi Beta Phi Foundation Recognition and Memorial Gifts

*Gifts may be made to the Pi Beta Phi Foundation in honor or remembrance of any individual or group. Recognition and memorial gifts are published twice a year in The ARROW. If an alumnae club or collegiate chapter is making the gift, please indicate as such and include the president's name and address.*

Enclosed is my/our gift of \$ \_\_\_\_\_



### In recognition/memory of (circle one):

Name (first, maiden, last): \_\_\_\_\_

Chapter/year of initiation: \_\_\_\_\_

If recognition, occasion if appropriate (birthday, anniversary, special achievement, etc.): \_\_\_\_\_

If memorial, date of death: \_\_\_\_\_

### Please notify:

Name: \_\_\_\_\_

Address: \_\_\_\_\_

City/State/Zip: \_\_\_\_\_

### Donor:

Name: \_\_\_\_\_

Address: \_\_\_\_\_

City/State/Zip: \_\_\_\_\_

*Please make checks payable to the Pi Beta Phi Foundation. Gifts to the Foundation are tax-deductible to the full extent of the law. Please mail this form with your gift to: Pi Beta Phi Foundation, 7730 Carondelet, Suite 333, St. Louis, MO 63105*



# Alumnae News



**MISSOURI BETA SALLY ALEXANDER HIGGINBOTHAM** met **KANSAS ALPHA ADRIENNE HISCOX MITCHELL** on a journey to the "most isolated inhabited place on Earth," Easter Island during a recent trip. From left: Sally's friend Betty Garrett, Adrienne and Sally.

For the past 18 years, **TENNESSEE GAMMA SARA OLIVER MILLENER** has suffered from chronic fatigue and immune dysfunction syndrome, a debilitating, chronic, viral condition with no known treatment. The disease, also known as CFIDS, causes sleep disturbances, musculoskeletal pain and impairment in short-term memory and concentration. But Sara's suffering may soon end thanks to Ampligen, an experimental drug. Sara is just one of 20 people in the U.S. who will be testing this drug, and for good reason. Sara mobilized elected officials, health-care providers and patient advocacy groups across the nation to investigate the new drug and make it available to patients. She hopes that by serving as a test case, she will help bring relief to the half million Americans with CFIDS.

**NORTH DAKOTA ALPHA DOROTHY TOMPKINS REVELL** is included in the 52nd Edition of "Who's Who in America."

**TEXAS BETA ANN L. TURNER COOK** is the original Gerber Baby. Ann's face has graced Gerber baby food jars since 1928 when Dorothy Hope Smith submitted a sketch of 2-year-old Ann to the company. When Ann was identified as the Gerber Baby in 1950, she was compensated with enough money to buy a car, pay off her college loans and make a down payment on a new house.

**WASHINGTON ALPHAS MARILI HUFFMAN LIBKE** and **BETTIE TYRRELL KOLB** have been almost inseparable since high school. They attended the University of Washington together, pledged Pi Phi together and returned to Wenatchee, Washington to raise their families together. This year, they attended Pi Beta Phi's 61st Biennial Convention together.

**MONTANA ALPHA HELEN OLIVER GJULLIN** celebrated her 87th birthday with a ride in a glider plane. Helen has never been one to sit around. After her retirement at age 65, she traveled to Europe where she backpacked around the countryside, brushed up on her French and hitched a ride with a group of college students.

**COLORADO ALPHA MARIANNA MAHLERES RAFTOPOULOUS** was elected County Commissioner for Moffat County, Colorado. She is the first woman to ever be elected to this position. Before taking this position, Marianna worked as the community relations director for the Memorial Hospital in Craig, Colorado.

Arrowmont Ambassador **JENNIFER CHAMBLIN** arranged a tour through the Business of Art Center in Manitou Springs, Colorado for the Colorado Springs Alumnae Club. Alumnae visited a fiber exhibition and toured studios where local artists were working on pottery wheels, fabric painting and sculpture. Jeanne Gumper, a watercolor artist and director of the Business of Art complex, has taught two sessions at Arrowmont. She shared her memories of Arrowmont School of Arts and Crafts. Other alumnae clubs can arrange similar programs by contacting their regional Arrowmont Ambassador.

**ILLINOIS ZETAS DENISE PECINA KARRIA** and **JUNE CARLSON PARRILLI** still keep in touch, although Denise lives in Littleton, Colorado and June lives in Hobe Sound, Florida. Denise made a Pi Phi outfit for June's daughter Natalie. The front says "Future Pi Beta Phi" and the Greek letters are painted on the back.



**TEXAS ALPHA GAY WARREN GADDIS'** company T3, The Think Tank, was named the 13th largest woman-owned business in Texas by *Women's Enterprise* magazine.





**ABOVE LEFT:** On December 16, the Louisiana Alpha Alumnae Advisory Committee celebrated the end of the fall semester with a dinner at the Sazerac Restaurant in the Fairmont Hotel. The group included, back row: Louisiana Alpha Dunbar Smith Amoss, Louisiana Beta Elizabeth Libiez, Louisiana Beta Stephanie Sutton, Alabama Gamma Stephanie Haughwout Sherling, Louisiana Alpha Karen Cochran Bloomfield; front row: Louisiana Alphas Elizabeth Elias Valldejuli, Martha Faurot and Elizabeth Williams.



Holt House Monmouth, Il. Birthplace of Pi Beta Phi 1867

Morton Hotchkiss, husband of **ILLINOIS BETA-DELTA JOAN FELTER HOTCHKISS**, created a pen and ink drawing of Holt House after he and his wife visited Pi Beta Phi's birthplace in Monmouth, Illinois. Mort is a graduate of the American Academy of Art in Chicago and a former commercial artist. His work includes illustrations of George Washington's Mount Vernon and Thomas Jefferson's Monticello.

**MISSOURI ALPHA KAREN OWENS PLETZ** is the president and chief executive officer of the University of Health Sciences College of Osteopathic Medicine, Missouri's largest medical school. Karen's career started in 1969 when she began teaching English. After two years, she took time off to raise her two daughters. In 1975, Karen enrolled in the University of Missouri Law School. She was a partner in a Jefferson City, Missouri law firm for two years before joining Central Banccompany as an assistant trust officer. After 18 years at the bank, Karen oversaw the organization's regional banking division, the financial management and trust services division, marketing, training and business development. She started her current position in Kansas City, Missouri in 1995.

**OHIO ZETA PATRICIA JONES NOLAN** creates woven, braided and hooked rugs for fun and fortune. She has sold her rugs to clients in the United States, Europe and Africa. She's made rugs for Disney World shops and braided pillow covers for Ralph Lauren's Polo collection. Her typical designs include 12 to 15 different colors and she works with wool, cotton, silk or any fabric a client requests. Pat's rugs are in high demand, and because they take up to 15 hours per square foot to create, they are not inexpensive. Rates range from \$15 to \$20 per square foot for basic woven rugs and can run as high as \$125 per square foot for hooked rugs.

**ABOVE CENTER:** The Virginia Eta Chapter celebrated its 10th Anniversary in early October. Alumnae from several classes attended a brunch and Cookie Shine on Homecoming Weekend at the University of Richmond.

**ABOVE:** On November 7, the 1957 pledge class of Washington Alpha celebrated its 40th Anniversary with a luncheon at the Women's University Club.

The **SACRAMENTO, CALIFORNIA ALUMNAE CLUB** hosted a Golden Arrow Tea this fall.

**PENNSYLVANIA GAMMA DOROTHY LINE SWARTZ** was honored as a 75-year member of the Harrisburg-Carlisle (Renee Conrad Morton) Alumnae Club. During the luncheon at the Bethany Village Retirement Center where Dorothy lives, alumnae attendees looked through photographs of Dorothy as a young woman and shared Pi Phi memories with this honored member.



## Evalyn Prouty Hickman Honored



The Fort Collins, Colorado Alumnae Club is honoring one of its favorite Golden Arrows by establishing a scholarship in her name at Colorado State University. The Evalyn Prouty Hickman Pi Beta Phi Scholarship will be awarded annually to an art student.

Evalyn is a third generation Colorado Alpha Pi Phi. Her grandmother, Evalyn Barney Snell was one

of the founding members of the Colorado Alpha Chapter at the University of Colorado. Evalyn's mother, Lolita Snell Prouty was Grand Treasurer from 1946 to 1952 and held several offices in the Fraternity.

Evalyn received her fine arts degree from the University of Colorado, and later received her master's degree in fine arts from the University of Northern Colorado. She taught at Colorado State University for 35 years, retiring as professor emerita. She now works as an artist in her home studio, creating hand-made paper embossings, embossed porcelain, etched sculptural glass disks and paintings done with natural desert sands.

It is because of her Pi Phi heritage, her support of the Fraternity and her generous ways that the Fort Collins Alumnae Club has created the scholarship.

**NEW YORK ALPHA ISABEL TOLMAN** has had an exciting career as a puppeteer. Her career began at a boarding school in Massachusetts where Isabel taught all aspects of puppetry, from carving and assembling the bodies to painting and clothing the finished puppets. She also taught lighting, stage construction and puppetry. After teaching, Isabel spent five years performing in children's hospitals as part of a traveling puppet show. In 1962, she met Jim Henson, creator of the Muppets, and became friends with him, some-

times filling in for him during shows. She later taught at Syracuse University before moving to Florida where she performed in various shows. Isabel is now retired and living in John Knox Village near Orange City, Florida.

The **ST. JOSEPH, MISSOURI ALUMNAE CLUB** sponsored a holiday brunch on January 3 at Missouri Alpha Laura Thomas Nelson's home. Alumnae enjoyed sharing college memories with collegians from the University of Missouri.

Members of the 1963 **INDIANA BETA** pledge class gathered for a reunion at the chapter house in Bloomington, Indiana. Attendees included, Kathleen Shelton Craig, Janice Stauffer Schulhof, Virginia Wynn Dever, Marcia Robbins Bonk, Marilyn Burdette Vaughn, Sue Huffman Bond, Connie Henderson Parker, Diane Fredrick McArdle, Kathy Lybrook Durkott, Sarah Bash Mayoras and Janet Meschberger Egolf.

In honor of her life-long career in visual arts, **IOWA ZETA BETTY STYER CALKINS** received an Arts Achievement Circle Award from residents of Central Illinois. The award recognizes artists who have made significant, enduring and high-quality artistic contributions to the community. Betty primarily paints landscapes using watercolors.

In October, the **BELLEVUE-EASTSIDE, WASHINGTON ALUMNAE CLUB** sponsored a "Slightly Older Sisters" program, in which alumnae members "adopted" new members from the Washington Alpha Chapter at the University of Washington. Alumnae and collegiate members gathered for a spaghetti dinner to celebrate their new relationships. Alumnae members will attend initiation ceremonies and a potluck dinner in the spring. At another gathering, club members learned to paint on plaster plates at the Paint Bar in Bellevue Square. The instructor shared the skills she had learned on a recent trip to Arrowmont School of Arts and Crafts.





**MISSOURI ALPHA JACQUELINE SMITH WOODWARD** and her husband, Steve, adopted a daughter from Russia last year. Jackie says that she and her husband were "overwhelmed by the desperate situations that we saw, yet even more affected by the generosity, spirit and tenacity of the Russians we met and worked with. While our lives were certainly altered forever with the addition of our wonderful daughter, our hearts will never be the same for many of our other experiences." Jackie is interested in hearing from other Pi Phi families who have had or are interested in similar experiences.

The **BEAUMONT, TEXAS ALUMNAE CLUB** sold Miss Minnie's Sweet Sourdough Bread at St. Mark's Episcopal Church annual chili supper and bazaar.



The **MARYLAND-D.C. SUBURBAN ALUMNAE CLUB** celebrated Halloween at a Harvest Party for 44 single-parent families at Crossway Community, the club's local philanthropy. Pi Phis painted faces, supplied and painted pumpkins, served snacks and assisted with games for the children.



**TEXAS DELTA JULIE PETERSON** is the director of marketing for the Texas Historical Commission in Austin, Texas. In this position, Julie will oversee development and implementation of marketing for programs including archeology, architecture, historical markers, heritage tourism and education, and downtown revitalization.

A group of **IOWA GAMMAS** meet each summer at Lake Okoboji, Iowa. The group includes Lenore Evans Henry, Elinor Healy Bedell, Peggy Schenk Smith, Jean Yappen Leuthauser, Marney Scott Beemer, and Helen Rude Waters.

Six **OHIO ALPHAS** celebrated Mom's Weekend at Ohio University. The group included, Susan Hines McDonald and daughter Laurel Brown, Mitzi Brown Chapman and daughter Amy Rosel and Jane Sawyer Raszka and daughter Sarah Raszka.

A group of **MISSOURI ALPHAS** reunited in Phoenix, Arizona to celebrate becoming Golden Arrows. The group included, Martha Storts Amster, Janet Feist LeLacheur, Sue Smith Holsman, Joan Bradley, Jane Turner Campbell and Hally Bell Rubsamen.

**MASSACHUSETTS ALPHA PHYLLIS FAZZARI SPEER**, the president of the La Jolla, California Alumnae Club and a museum docent, took members of the club and their husbands and friends on a tour of the "Old Masters" collection at the San Diego Museum of Art.



**ABOVE LEFT: Suzanne Wells** pledged Pi Phi during her freshman year at DePauw University. When she transferred to another non-Greek university before being initiated, she felt that her dream of becoming a Pi Phi would never become a reality. Yet, 25 years after she pledged, Suzanne was initiated at the University of Dayton in a ceremony performed by her daughter, Ohio Iota Chapter President Becky Wells.

**ABOVE CENTER: Louisiana Beta Sue Pierson Welch** is proud of the fact that both of her daughters are Texas Alphas. In fact, Joslyn, the oldest sister, initiated her younger sister Sydney into the Texas Alpha Chapter of Pi Beta Phi.

**ABOVE: Laurel Ricketts Klinge** was an honor initiate into Missouri Gamma on November 21. She is the 14th woman in her family to become a member of Pi Beta Phi. A graduate of West Point Academy, Laurel was invited by the Philadelphia-Main Line, Pennsylvania Alumnae Club and by Grand Council to become a Pi Phi. Attending her initiation were, from left: her grandmother, Missouri Gamma Margaret Payntar Curtis, her mother, Missouri Gamma Camille Curtis Ricketts, Laurel Ricketts Klinge, and her sister, California Epsilon Elizabeth Ricketts Childs.



# Alumnæ News



## From Pi Phi Pens ...

In her new book, "Equal to the Challenge: Pioneering Women of Horse Sports," **ALABAMA ALPHA JACLYN CURRY BURKE** chronicles the trials of the brave women who bucked tradition and the rules that barred their way to the winner's circle. In the book, Jackie recalls tales from her days as a newspaper sports reporter and her life as an equestrienne.

**INDIANA BETA HELEN MORACCO RODGERS NASH** is the editor and publisher of *Watergardening Magazine*, a bi-monthly, 96-page full-color magazine. Helen is the author of six other watergardening publications. "The Pond Doctor," "The Complete Pond Builder," "Low Maintenance Water Gardens," "Container Water Gardens," "Waterfalls, Fountains, Pools and Streams" and "Aquatic Plants and Their Cultivation" were all published by Sterling Publishing Company in New York.

**ARKANSAS ALPHA MARGARET JEWELL MULLEN** of Menlo Park, California published "One Woman's Journey from 8 to 88," a story of her life. This book is a follow-up to "Arkansas Childhood."

For 30 years, **OHIO DELTA MARTHA HIBBERT BOICE** has studied the Shaker community on Watervliet Avenue in the Belmont neighborhood and Shakertown Road in Beavercreek in Dayton, Ohio. She, and two co-authors, wrote "Maps of the Shaker West, A Journey of Discovery," a book to help readers track down the places where Shakers once lived and worked.



**TEXAS DELTA CAROL MORRIS LITTLE'S** new book, "A Comprehensive Guide to Outdoor Sculpture in Texas," received the Ottis Lock Award from the East Texas Historical Association. The award, named in honor of an outstanding Texas historian and civic leader, is given annually for the best book published on East Texas history. Carol's book includes a historical overview of public art in Texas as well as an account of the events that inspired the placement of many of the state's monuments and memorials. For more information about the book, call (800) 252-3206.



**ABOVE:** The Houston, Texas Alumnae Club hosted its annual fund-raiser, "A Tablescape Adventure" on March 3 and 4. The event featured 57 elaborate table designs displayed in the ballroom of the Houston Country Club. The event benefited the Pi Beta Phi Children's Library at Texas Children's Hospital and the Pi Beta Phi Children's Enrichment Program at the University of Texas M.D. Anderson Cancer Center.



**LOWER:** Seven Ohio Zetas reunited for a fun-filled weekend in Las Vegas. The Pi Phis had such a great time seeing the many sites, they had little time for gambling. The group included, back row: Jane Mullin Schmidt, Megan Murphy Murphy, Jennifer Green Buckman, Amy Alexander Rogers; front row: Susan Gavin Altenburg, Laura Eckman Atwell and Pam Perry Buchheit.



# In Memoriam

## Arizona Alpha

VIRGINIA ROBINSON FIELDER, 1933;  
November 1997  
ANNA MACLACHLAN MATHESON, 1926;  
November 1997  
ALICE HANSON THOMAS, 1930; October 1997  
ROBERTA TIDMORE WILCOX, 1933; April 1997

## Arkansas Alpha

ELEANOR WOOD TEAGUE, 1950;  
November 1997

## California Alpha

MARJORIE TIGHT LEWIS, 1938; April 1997  
LOUISE BUXTON WOOLF, 1927; March 1997

## California Gamma

DORIS HUCK SESSIONS, 1939; January 1997

## Colorado Beta

BETTY POLLARD BIRNEY, 1931; August 1997  
MARJORIE MATHERS ILIFF, 1918;  
October 1997  
MAXINE GOLDSMITH ULLEMAYER, 1926;  
August 1997

## Connecticut Alpha

PATRICIA DEWEES CREED, 1945;  
September 1997

## Florida Alpha

CATHARINE MARTIN HONEYWELL, 1927;  
November 1997

## Florida Beta

MADALYN TRULUCK SCOTT, 1941;  
November 1997

## Florida Gamma

SARA BELL FOLGER, 1930; June 1997  
JOSEPHINE QUINN GUENTHER, 1933;  
March 1997

## Illinois Alpha

MARY BOYD BLOSSER, 1954; September 1997  
HARRIETTE JEWELL MICKY, 1928;  
October 1997

## Illinois Beta

ELLEN OLSON LAYTON, 1919; October 1997

## Illinois Beta-Delta

MARGARET HANDKE ARIANO, 1938;  
October 1997

## Illinois Epsilon

BETTY JOHNSON DANIELSON BOWEN, 1933;  
October 1997

## Illinois Zeta

JESALYN JONES GALE, 1956; September 1997  
BETTY LOVEGREN LAYMAN, 1938;  
November 1997

## Illinois Eta

ELIZABETH THALMAN KINNAMON, 1937;  
October 1997  
EMILY JOHNSON METZLER, 1928;  
October 1997

## Indiana Beta

MARCIA GARRETT, 1956; October 1997  
ELIZABETH DECKER HATTENDORF, 1925;  
May 1997  
DOLORAS ELSNER MONTGOMERY, 1928;  
October 1997

## Indiana Gamma

DORIS BROWN FAWCETT, 1937;  
November 1997  
FRANCES STRONG JORDAN, 1932;  
October 1997

## Indiana Delta

RUTH CARNEY DELONG, 1933; October 1997

## Iowa Alpha

ELIZABETH WRIGHT RANDALL, 1929;  
October 1997

## Iowa Beta

HELEN WRIGHT GRANT, 1915; July 1997  
MARJORIE McCAMMOND VAUGHN, 1928;  
September 1997

## Iowa Gamma

JOSEPHINE MACRAE BOSWELL, 1938; May 1997  
HELEN WALSH, 1926; June 1997

## Iowa Zeta

CONSTANCE LEONARD FISHER, 1941;  
October 1997  
MARGARET JONES WILSON KLEIN, 1932;  
October 1997  
EVELYN MITCHELL SMITH, 1938; October 1997  
DOROTHY WILSON WARE, 1924;  
October 1997

## Kansas Alpha

BETTY BURCH DREHER, 1938; November 1997  
JUANITA YOUMANS JACKMAN, 1925;  
October 1997  
KATHRYN PICKENS TATUM, 1947;  
October 1997

## Louisiana Beta

BETTY OXFORD MILFORD, 1949; August 1997  
BONNIE REDFIELD SWAN, 1940;  
November 1997  
TERI LYNNE TERRELL, 1971; February 1997

## Maine Alpha

LOUISE DURGAN HAMMONS, 1929;  
November 1997

## Maryland Alpha

JOSEPHINE FLEMING THOMAS, 1932;  
April 1997



# In Memoriam

Initiation year and month and year of death follow each member's name. When submitting death notices to Central Office, please give month and year of death. Names cannot be listed without this information.

## Massachusetts Alpha

RUTH L. MELLIN, 1941; June 1997  
HELEN WIGGLESWORTH WESCOTT, 1926;  
September 1997

## Minnesota Alpha

ELIZABETH BRANTON MILLER, 1929;  
October 1996

## Missouri Alpha

MARTHA WOODFILL BRUCE, 1936;  
March 1997  
DOROTHY MONIER ELLET, 1929;  
November 1997  
INDIA WEBB MCCANSE, 1938;  
November 1997

## Missouri Beta

ALICE WEBER JOHNSON, 1925;  
December 1997

## Missouri Gamma

MARY BELLE EDMONDSON ROBBINS, 1941;  
August 1997

## Nevada Alpha

ETHEL PETTIS KAUL, 1945; October 1997  
JEANNETTE BROWN WICKLUND, 1926;  
October 1997

## New York Delta

ROSALIE McDERMOTT CALLAHAN, 1949;  
February 1997

## North Carolina Alpha

ANNE WELLS BRANSCOMB, 1948;  
October 1997

## North Dakota Alpha

CATHERINE BAKER TIMBOE, 1932; July 1997

## Nova Scotia Alpha

JEANNE GEDDES MACKEIGAN, 1936;  
August 1997

## Ohio Alpha

DOROTHY ROE KENNARD, 1931; October 1997

## Ohio Beta

CAROL SIEVERS CROCKETT, 1959;  
November 1997  
LUCILLE MOATS ELDER, 1928;  
September 1997

## Ohio Delta

DODDIE LAMPMAN TRUAX, 1938;  
November 1997

## Oklahoma Alpha

LOUISE DODSON HOUGHIN, 1928;  
November 1997  
MARJORY GRIFFIN LEAKE, 1938; October 1997  
JANE SCOTT SISK, 1957; October 1997  
JOSEPHINE SULLIVAN STAYTON, 1937;  
October 1997

## Oklahoma Beta

PAULINE DARK HASSLER, 1923; February 1997  
ELLEN WOODS WESTHEIMER, 1931;  
February 1997

## Ontario Beta

CARLA GAY MICHELI, 1964; January 1997

## Oregon Alpha

JANE MABIE VAUGHN, 1937; June 1997

## Oregon Beta

JEAN MANAGHAN DAVIS, 1936; October 1997  
LUCY ELDEN DICKINSON, 1928; October 1997  
MARY KAY REEVES SCHWARZ, 1949;  
March 1997

## South Carolina Beta

MICHELLE LOUISE RADFORD, 1983;  
January 1997

## South Dakota Alpha

MARIAN BAINBRIDGE ELMSLIES, 1937;  
October 1997  
MARILYN GEORGE MABEE, 1953; June 1997  
MARY GRIFFIN ROBINSON, 1935; August 1997

## Texas Alpha

MARY ANN SCHNEIDER, 1936; October 1997

## Utah Alpha

THERESA HAGAN HALL, 1935; September 1997  
LAURA YOUNG WELLS, 1931; September 1997

## Virginia Gamma

MARJORIE LANSTON FITZGERALD, 1929;  
September 1997  
FLORENCE FISHER ROBINSON, 1935;  
October 1996

## Washington Alpha

JULIA SMITH NEWELL SODERBERG, 1928;  
October 1997

## West Virginia Alpha

JEAN HALLER GUSTKEY, 1925; September 1997  
DOROTHY BARNARD WEEKS, 1945;  
September 1997

## Wisconsin Alpha

MARJORIE ATWELL CARY, 1938;  
September 1997

## Wyoming Alpha

HELEN L. HASBROUCK, 1932; October 1997  
LOIS DOWNING REED, 1937; July 1997



# Alice Weber Johnson 1908–1997

In "The ARROW of Pi Beta Phi (History 1867–1936)," published in February 1936, there are biographical sketches of our Founders. Beneath Jennie Home Turnbull's name is the following quotation: "To live in hearts we leave behind is not to die." To those who were fortunate enough to have known her well, this will be true of Alice Weber Johnson.

From February 18, 1925, the day of her initiation into the Missouri Beta Chapter, Pi Beta Phi became an important part of Alice's life. She was fortunate in living not too far from Chapin, Illinois, and thus to have close contact with Amy Burnham Onken (former Grand President) who provided Alice with love and respect for the Fraternity. In 1949, Alice was elected Alumnae Province President, and in 1951 she became Director of Extension on Grand Council. At the Houston Convention in 1952, Alice succeeded Marianne Reid Wild as Grand Vice President. At the Swampscott Convention in 1958, Alice was elected Grand President. She served during some of the most difficult years for Pi Beta Phi and the entire fraternity system. Through anti-fraternity sentiments and anti-discrimination statements demanded by colleges and universities, Alice presided with calm grace and dignity. For her determination to keep the fraternity system vital and acceptable to members and administrations, Pi Phi will be ever in her debt.

During her days in office, Alice visited many chapters and alumnae clubs. It was one of her favorite duties. Her visits brought special friendship to Pennsylvania Beta, South Carolina Alpha and Texas Gamma where she met Jean Wirths Scott, Sis Mullis and Beth van Maanen Beatty.

Because she began attending convention early, she was privileged to

know some of the Founders. On her Pi Phi visits, Alice always loved to tell the story of the 1927 convention—Pi Phi's 60th Anniversary—at Breezy Point, Minnesota, where Inez Smith Soule, Clara Brownlee Hutchinson and Fannie Whitenack Libbey were in attendance. She was asked to take them for a short automobile tour of the area. Alice was so excited, and she said entranced, at the honor that she was temporarily distracted and drove off the side of the road. Unable to return she became very nervous. There came a voice from the back seat, "Dear, just a minute. I'll get out and then you try again." It was Fannie Whitenack Libbey who was on the plump side. She did get out, and Alice successfully returned to the road.

This was one highlight of her life. Alice attended 30 conventions and at the 1993 convention was named Grand President Emerita. The convention attendees will always remember the surprised look on her face and the tearful, gracious thank you.

It was during Alice's years as Grand President that Central Office moved to St. Louis, Missouri. As Pi Phi approached its centennial, the "Centennial Project" began to develop into Arrowmont School of Arts and Crafts. Alice's own chapter honored her in 1962 in its first presentation of the Alice Weber Johnson Bowl, which is now presented each year to the chapter which has ranked most often among the top 10 in S&S scores for the past 10 years.

Through all the years, thousands of Pi Phis have had the privilege and pleasure of knowing this lovely lady. Three



During their final visit together, from left: Grand Vice President of Collegians Sis Mullis, former Grand President Jean Wirths Scott, Alice and Grand President Beth van Maanen Beatty shared many special Pi Phi memories.

special ones Jean, Sis and Beth shared a day with her they will always remember. The following night Alice slipped away.

Of all the Pi Phi songs she loved best "Pi Phi Lights Anew." "Pi Phi lights anew, the flame of friendship true. The joy of having known you will last my whole life through."

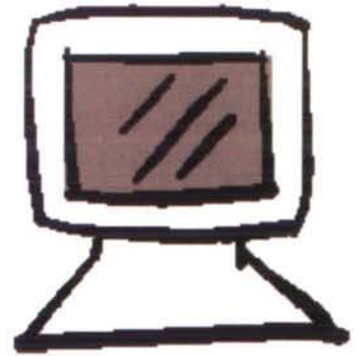
All of us can echo those words. For the joy of having known Alice will last our whole life through.

—EVELYN PETERS KYLE  
PI BETA PHI POET LAUREATE, FORMER  
GRAND COUNCIL MEMBER AND DEAR  
FRIEND

*Evelyn and Alice met at the 1952 Convention in Houston, Texas. They remained close friends through the years, speaking at least once a week.*

Donations in memory of  
Alice Weber Johnson may be made to  
Pi Beta Phi Foundation  
7730 Carondelet, Suite 333,  
St. Louis, MO 63105. These gifts are  
tax deductible to the full extent  
of the law.





## Pi Beta Phi Web Site Guidelines

In this "Information Age," Pi Beta Phi Fraternity realizes that some collegiate chapters and alumnae clubs may wish to establish sites on the World Wide Web. A web site can become a great tool for informing high-school students and their parents about Pi Beta Phi, for sharing news with long-distance alumnae or for describing the work of the Fraternity to non-Greek viewers. The Fraternity supports the efforts of its members, but remains aware of the potential risks inherent in publishing electronic information that could possibly invade members' and Fraternity privacy. With this in mind, Pi Beta Phi has established guidelines that must be followed by all collegiate chapters and alumnae clubs wishing to establish their own web sites.

### General Rules

- Any actions or words on a Pi Beta Phi web site reflect directly upon the Fraternity and its members. Please use discretion when creating web pages, bearing in mind that any information is a reflection upon Pi Beta Phi and when posted on the World Wide Web is accessible to people all over the world. All postings should reflect positively on the Fraternity.
- Pi Beta Phi web site may not be used for commercial, political or religious purposes. Appropriateness of content is the responsibility of each chapter or alumnae club, but will be monitored by the Fraternity's Web Watch Committee on a regular basis and is subject to approval of the Fraternity.
- The name "Pi Beta Phi," the Greek letters "ΠΒΦ," all stylized versions of these, the crest, the pledge pin, the badge and other symbols are registered trademarks of the Fraternity. Use of these symbols is restricted to members, alumnae clubs and collegiate chapters. Preserving and enhancing Pi Beta Phi's rights in its valuable trademarks serves to benefit all of the Fraternity's chapters and clubs.
- Using profanity and/or degrading language is prohibited and is cause for disciplinary actions. Public criticism of Pi Beta Phi, its officers, graduate consultants, Central Office staff or members is prohibited.
- Please obtain approval from Central Office to post any Pi Beta Phi publications, official correspondence or sections of *The ARROW of Pi Beta Phi*. Also obtain permission to use any artwork or other materials from the Pi Beta Phi official web site.
- All photographs should represent the chapter or club in a positive light. Secure permission from all individuals in the photograph and the photographer before publication on the Internet.

### Each web site must comply with the following:

- Fraternity standards and policies, including the Pi Beta Phi Constitution & Statutes
- Campus Panhellenic rules and university policies
- All applicable federal, state, provincial and local laws regulating computer and telecommunications use, privacy and publicity rights and defamation.

### A Few Important Reminders ...

- Information published on the Internet is not confidential.
- Your web site can be accessed by anyone in the world. Keep material in good taste and make sure it represents your chapter or club and Pi Beta Phi well. The future of the Fraternity is in your hands.

*Pi Beta Phi Fraternity reserves the right to modify the above guidelines at any time.*



# Fraternity

## News & Notes



### New Holt House Hostess

Illinois Alpha Jane Mears Warfield is the new Holt House Hostess. Since attending Monmouth College in the mid-1950s, Jane has called Monmouth, Illinois, her home. She has served as president of the Monmouth, Illinois Alumnae Club and as a member of the Holt House Committee. As the new Holt House Hostess, Jane is responsible for maintaining daily hours, presenting guided tours, arranging special

events and rentals and general upkeep of the site of Pi Beta Phi's founding. Jane has implemented many new practices for the smooth running of Holt House. She has increased the visibility and usage of Holt House through her relationship with the Chamber of Commerce.

In addition to being Holt House Hostess, Jane works part-time in an administrative position for a Monmouth dentist.

### Anniversary Celebrations

**VERMONT BETA** will celebrate its 100th Anniversary October 3, to coincide with Homecoming weekend at the University of Vermont. For more information about the weekend, call Beth Nutter, Vermont Alumnae Club President at (802) 878-9854.

**WASHINGTON GAMMA** will celebrate its 50th Anniversary. Call Katie Parr, Chapter President, at (253) 756-4448 for more information.

The **KANSAS ALPHA** Chapter will celebrate its 125th Anniversary April 4 at the Holidome hotel in Lawrence, Kansas. Festivities will include a dinner, a Cookie Shine, house tours and a guided campus bus tour.

The **SOUTH DAKOTA ALPHA** Chapter will celebrate its 75th Anniversary September 30.

### Attention: Alumnae Abroad

- **Problem:** Curious about how to locate other Pi Phis who live in your same area?
- **Solution:** E-mail an inquiry to Central Office at [pibetaphi@compuserve.com](mailto:pibetaphi@compuserve.com) or to Emily Tarr, Director of Alumnae Communications at [mail40900@pop.net](mailto:mail40900@pop.net).
- **Problem:** The Fraternity is looking for interested alumnae who are living abroad to act as a contact for collegians who are studying and traveling abroad.
- **Solution:** If you are interested in more information about this program, contact Mary Lu Meixell, Director of Alumnae Extension at [sfng97b@prodigy.com](mailto:sfng97b@prodigy.com) or at 4926 Wheatstone Drive, Fairfax, Virginia 22032.
- **Problem:** Do you want more news about the Fraternity?
- **Solution:** Sign up for *Pi Phi Printings*, the quarterly on-line newsletter produced by Emily Tarr. To sign up, e-mail Emily at [mail40900@pop.net](mailto:mail40900@pop.net).

### No Stamp? No Problem

Get in touch with Pi Phi on-line.  
**Pi Beta Phi web site**  
[www.pibetaphi.org](http://www.pibetaphi.org)  
**Central Office e-mail**  
[pibetaphi@compuserve.com](mailto:pibetaphi@compuserve.com)  
**The ARROW e-mail**  
[thearrow@primary.net](mailto:thearrow@primary.net)



# Fraternity

News & Notes

## Collegiate Leadership Seminars

### “Leadership ... Toward 2000 Together”

Here comes the sun ... and the 1998 Collegiate Leadership Seminars. These three-day mini-conventions provide one-on-one interaction with Grand Council, Collegiate Province Presidents and other fraternity officers. Collegians will learn about risk management and various leadership hot topics, hear keynote speakers, and attend an awards banquet and a Cookie Shine. These seminars are a great opportunity for collegians to share the enthusiasm, friendship and spirit of Pi Beta Phi.

#### June 26–28

University of Duquesne,  
Pittsburgh, Pennsylvania

##### Provinces:

Alpha, Beta, Gamma, Delta, Kappa, Lambda I, Lambda II, Nu, Xi and Omicron

#### July 10–12

University of Utah,  
Salt Lake City, Utah

##### Provinces:

Rho, Sigma, Psi, Omega, Alpha-Beta, Alpha-Gamma, Alpha-Delta, Alpha-Epsilon, Alpha-Zeta and Alpha-Eta

#### July 17–19

University of Memphis,  
Memphis, Tennessee

##### Provinces:

Epsilon, Zeta, Eta, Theta, Iota, Mu, Pi, Tau, Upsilon, Phi and Chi

## Alumnae Panhellenics

During the 55th Biennial Session of the National Panhellenic Conference in Norfolk, Virginia, in October, participants discussed the importance of official NPC Alumnae Panhellenic organizations in local communities of Greek women. Made up of alumnae representing any of the 26 member women's fraternities, Alumnae Panhellenic organizations inform members of current trends, promote the fraternity system, improve the panhellenic image and stimulate continued interest.

The purposes of an Alumnae Panhellenic are publicizing the high ideals, purposes and accomplishments of the women's fraternity system and maintaining files on prospective collegiate members for the reference of member groups.

Alumnae Panhellenics provide guidelines and support to alumnae interested in establishing an Alumnae Panhellenic anywhere in the world. For more information, contact Mary Lu Meixell, Director of Alumnae Extension, at [sfng97b@prodigy.com](mailto:sfng97b@prodigy.com) or (703) 425-6360.

## Pi Phi Challenge

This fall, California Eta Michelle Murrell Goseco, the Fraternity's Risk Management Officer, challenged all collegiate chapters to hold a minimum of two non-alcoholic social events for the first semester. As mentioned on page 5, the Pi Phi Challenge was part of the Fraternity's risk management education and awareness program for chapters, which includes a Guardian Angel program customized by each chapter to meet their interests and campus situation and a new chapter Risk Management Educator. This new officer's duties include educating the chapter on risk management issues, working with the Vice President of Mental Advancement on risk management programming and working with the Social Chairman to plan safe social events according to risk management policies.

Congratulations to the following chapters who took the Pi Phi Challenge:

California Eta  
California Theta  
California Mu  
Florida Alpha  
Idaho Alpha  
Illinois Alpha  
Illinois Theta  
Indiana Delta  
Indiana Epsilon  
Iowa Gamma  
Iowa Eta  
Louisiana Beta  
Michigan Alpha  
Mississippi Beta  
Nebraska Beta  
Ohio Zeta  
Ohio Eta  
Oklahoma Alpha  
Pennsylvania Epsilon  
Texas Epsilon  
Texas Eta  
Virginia Eta  
Washington Alpha  
Washington Beta





- A. Plain bar pin.  
BP139 (GK) \$28.00
- B. Pearl bar pin.  
BP138 (GK) \$50.00
- C. Florentine filigree ΠΒΦ charm.  
BP127 (GK) \$39.50
- D. Filigree oval crest charm.  
BP128 (GK) \$38.50
- E. Large arrow charm.  
BP102 (10K) \$46.00
- F. Large arrow charm.  
BP135 (Sterling) \$17.50
- G. Small arrow charm.  
BP103 (10K) \$33.00
- H. Large lavalier.  
BP134 (Sterling) \$17.50  
BP107 (10K) \$31.00
- I. Small lavalier.  
BP108 (10K) \$21.00
- J. Crest charm.  
BP104 (10K) \$44.00
- K. Pearl lavalier.  
BP100 (10K) \$99.00
- L. Monogram recognition pin.  
BP109 (GK) \$15.00
- M. Lavalier bracelet.  
BP115 (10K) \$165.00  
BP145 (Sterling) \$101.00
- N. Arrow bracelet.  
BP118 (10K) \$195.00  
BP119 (Sterling) \$99.00
- O. Angel band.  
BP120 (10K) \$210.00  
BP121 (Sterling) \$99.00
- P. Oval incised letter ring.  
BP140 (10K) \$147.00  
BP144 (Sterling) \$75.00
- Q. Oval raised letter ring.  
BP122 (10K) \$147.00  
BP143 (Sterling) \$75.00
- R. Arrow ring with ΠΒΦ.  
BP123 (10K) \$147.00  
BP141 (Sterling) \$75.00

- S. Crest signet ring.  
BP130 (10K) \$185.00  
BP137 (Sterling) \$75.00
- T. Mini monogram ring.  
BP133 (10K) \$95.00  
BP132 (Sterling) \$48.00

Rings available in whole or half sizes 4-8. If ring size is not in stock, please allow 6-8 weeks for delivery.

Officer Dangles

- D100 (GK) \$10.50
  - DK100 (10K) \$19.50
- Specify dangle.
- 1. President
  - 21. AAC (Alumnae Advisory Committee)
  - 4. Treasurer
  - 5. Corresponding Secretary
  - 8. Recording Secretary
  - 9. Membership/Rush Chairman
  - 11. V.P. Moral
  - 12. Historian
  - 13. Social Chairman
  - 19. House Manager
  - 3. Secretary
  - 22. V.P. Mental
  - 27. V.P. Social
  - 29. Parliamentarian
  - 32. Chapter Nominee—Jean Wirths Scott Award
  - 35. Member-at-Large
  - 36. House Corporation
  - 40. Graduate Consultant
  - 55. Balfour Cup
  - 39. Scholarship
  - 45. Panhellenic

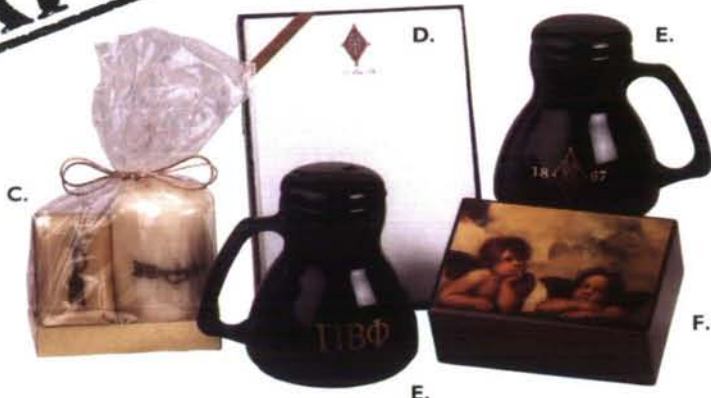
Please call Pi Beta Phi Central Office (314)727-7338 for a brochure featuring Pi Beta Phi badges and crest guards.



# Pi Phi EXPRESS



A. Alumna T-shirt. L, XL  
B. Pi Beta Phi mom T-shirt. S, M, L



C. Soap and candle gift set. (Gift boxed.)  
D. Crest stationery. 30/pkg.  
E. Travel mug. Two-sided design.  
F. Wooden angel box.

A. Alumna T-shirt. L, XL  
T194 \$12.95  
B. Pi Beta Phi mom T-shirt. S, M, L  
T237 \$25.00  
Pi Beta Phi dad T-shirt (not shown). L, XL  
T238 \$25.00  
C. Soap and candle gift set. (Gift boxed.)  
N341 \$12.00  
\$10.50 Sale  
D. Crest stationery. 30/pkg.  
S153 \$5.00

E. Travel mug. Two-sided design.  
N256 \$8.50  
F. Wooden angel box.  
N323 \$28.00  
\$21.00 Sale  
G. Ash-gray jersey shorts.  
M, L, XL  
SH138 \$22.50  
H. Arched Pi Beta Phi hat with ΠΒΦ on the back.  
N361 White \$18.00  
N362 Navy \$18.00  
I. ΠΒΦ bar design hat. Specify color: white or red.  
N363 \$18.00

J. Two-tone navy and hunter hat.  
N121 \$18.00  
Two-tone hunter and khaki hat.  
N122 \$18.00  
K. Brushed khaki hat.  
N120 \$16.00  
L. Athletic design T-shirt. Specify color: navy, burgundy or hunter. L, XL  
T193 \$12.95  
M. History T-shirt. "We are not good because we are old, we are old because we are good." M, L  
T239 \$12.00



G.



H. Arched Pi Beta Phi hat with ΠΒΦ on the back.  
I. ΠΒΦ bar design hat. Specify color: white or red.  
J. Two-tone navy and hunter hat.  
K. Brushed khaki hat.



L. Athletic design T-shirt. Specify color: navy, burgundy or hunter. L, XL  
M. History T-shirt. "We are not good because we are old, we are old because we are good." M, L









Forty-four percent of U.S. college students engaged in binge drinking during the two weeks prior to a survey conducted by the Higher Education Center for Alcohol and Other Drug Prevention



Between 75 and 90 percent of all campus violence is alcohol related.



One in four women on college campuses were victims of rape or attempted rape. Eighty-four percent of those were acquaintance rapes; 57 percent of the rapes happened on dates.

Shocking? Yes, but true.

Pi Beta Phi realizes that our members face many challenges on today's campus. The articles inside this issue of *The ARROW* address these challenges and explain what Pi Beta Phi is doing to ensure that our members have a safe college experience.

*Statistics provided by the BACCHUS and GAMMA Peer Education Network, Summer 1997.*

## HAVE YOU MOVED OR CHANGED YOUR NAME?

\_\_\_\_\_  
Initiated Name

\_\_\_\_\_  
New Name (last/first/middle)

\_\_\_\_\_  
New Address

\_\_\_\_\_  
City/State/Zip

\_\_\_\_\_  
Phone Number

\_\_\_\_\_  
Chapter and Year of Initiation

Clip this form, place in a stamped envelope and send to:  
Pi Beta Phi Central Office  
7730 Carondelet, Suite 333  
St. Louis, MO 63105

Pi Beta Phi Central Office,  
7730 Carondelet, Suite 333,  
St. Louis, MO 63105

**Address Service Requested**

\_\_\_\_\_  
If you are an officer in the Fraternity, please give title so that we may update officer lists.