

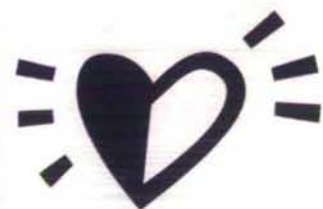
# The Arrow

of Pi Beta Phi

Fall • 1999



The Stars  
at Night  
Were Big  
and Bright





# Perspective

**Pi Beta Phi's 1999–2001 Grand Council, front: Emily Russell Tarr, Beth van Maanen Beatty and Sis Mullis; back: Linda Noel Ibsen, Lois Huston Ross, Maurine Hager Jones and Kay Knittle Brock.**



## Pi Beta Phi's 1999–2001 Grand Council

This summer, the stars shone brightly in Houston, Texas home to Pi Beta Phi's 62nd Biennial Convention. During this event, the 1999–2001 Grand Council was installed. As two former Grand Council members retired, two new members were welcomed to Grand Council. Five members continued on Grand Council, with one member assuming a new position.

New to Grand Council are Emily Russell Tarr, Grand Vice President of Alumnae and Linda Noel Ibsen, Grand Vice President of Program Development. Carolyn Pavletich Lesh and Lou Ann Montgomery Carter retired from Grand Council.

Texas Beta Emily Russell Tarr graduated from Southern Methodist University with a bachelor's degree in elementary education and a minor in German. Throughout her years of service to Pi Phi, Emily has held every alumnae club position except ACRIC, was an Alumnae Province President and the Director of Alumnae Communications. Emily also was a charter member of the East Fort Bend County, Texas Alumnae Club in suburban Houston.

When she is not working on Pi Phi business, Emily manages residential and commercial rental property and enjoys participating in her local garden club. In addition to

gardening both flowers and organic vegetables, water aerobics and Bible study are included in her hobbies. She and her husband also have fun visiting their two sons and traveling in Europe.

As a collegian, Linda Noel Ibsen served her chapter as pledge educator, corresponding secretary and convention delegate. Currently, Linda is a member of the Boulder, Colorado Alumnae Club. Linda has served on Arizona Beta's Alumnae Advisory Committee, and also has been a Province Coordinator, a Collegiate Province President and the Director of Alumnae Advisory Committees.

Professionally, Linda was a junior high school teacher for 10 years. Linda's community activities include high school parent council, youth soccer board and Eagle Scout counselor. She and her husband have two children, and she enjoys traveling, reading, needlepointing and playing golf.

Beth van Maanen Beatty will continue as the Fraternity's Grand President. Also continuing in their positions are Grand Vice President of Collegians Sarah Ruth "Sis" Mullis, Grand Vice President of Membership Kay Knittle Brock and Grand Vice President of Philanthropies Lois Huston Ross. Maurine Hager Jones, previously the Grand Vice President of Program Development, is the new Grand Vice President of Finance.

The new Grand Council held its fall strategic planning meeting at Central Office this August, where Council members discussed the Fraternity's future growth and development.

# Volume 116 • Number 1

# Contents

## Editor

Elizabeth Gilkison Cannon

## Assistant Editor

Sara Ellen Bell

## Copy Deadlines

Spring–December 1      Fall–June 1  
Summer–April 1      Winter–October 1

Address correspondence of an editorial nature to the editor.

## Pi Beta Phi Central Office

7730 Carondelet, Suite 333  
St. Louis, MO 63105  
(314) 727-7338  
FAX: (314) 727-8049  
E-mail: centraloffice@piphico.org  
www.pibetaphi.org

## Address Changes and In Memoriam

Pi Beta Phi Central Office  
7730 Carondelet, Suite 333  
St. Louis, MO 63105

## Pi Beta Phi Fraternity, ΠΒΦ Founded 1867

### Founders

Emma Brownlee Kilgore  
Margaret E. Campbell  
Libbie Brook Gaddis  
Ada Bruen Grier  
Clara Brownlee Hutchinson  
Fannie Whitenack Libbey  
Rosa Moore  
Jennie Nicol, M.D.  
Inez Smith Soule  
Fannie Ann Thomson  
Jennie Horne Turnbull  
Nancy Black Wallace

## Features

### 4 Convention

The stars at night were big and bright deep in the heart of Pi Phi's 62nd Biennial Convention in Houston, Texas.

### 12 Award Winners

Pi Phi's finest: 1998–99 collegiate and alumnae award winners.

### 19 Evelyn Peters Kyle & Emma Harper Turner Province Winners

Alumnae province winners of two Fraternity service awards.

### 35 Amy Burnham Onken & Chapter Service Award Province Winners

Province winners of two prestigious collegiate awards.

## Departments

- |                          |                              |
|--------------------------|------------------------------|
| 10 From the Editor       | 32 Collegiate News           |
| 11 From the Reader       | 38 Fraternity News & Notes   |
| 16 Alumnae News          | 40 In Memoriam               |
| 22 Fraternity Directory  | 41 Links to Literacy         |
| 28 Arrowmont             | 42 Directions                |
| 30 Foundation            | 44 Pi Phi Express            |
| 31 Rush Information Form | 47 Masters of Design Jewelry |

3



Member College Fraternity Editors Association

The ARROW of Pi Beta Phi (USPS 032-540) is published quarterly by Pi Beta Phi Fraternity, 7730 Carondelet, Suite 333, St. Louis, MO 63105-3328. Second class postage paid at St. Louis, MO. POSTMASTER: Send address changes to *The ARROW of Pi Beta Phi*, 7730 Carondelet, Suite 333, St. Louis, MO 63105-3328.





Greeting attendees—the "Ask Me Angels."



Convention Coordinator, Convention Site Coordinator and Houston Executive Committee.



Legacies at the Yellow Rose of Texas dinner.



Alumnae from Hutchinson, Kansas.



Parade of Banners at Dinner by Chapter.



An award-winning hug.



Grand President Beth van Maanen Beatty and her legacy daughters.



Pennsylvania Kappa receives its charter.



Indiana Theta receives its charter.

# Deep in the Heart

## Message from the Grand President

The "stars at night were big and bright" at our 62nd Biennial Convention in Houston. More than 1,300 Pi Phis participated in some phase of convention either as full-time registrants or as attendees at special programs and meal events. Alumnae and collegians shared that special Pi Phi excitement so evident at convention. Guest speakers including Pennsylvania Beta Jean Wirths Scott, Maryland Beta Dawn Sheeler Ford, Ohio Beta Barbie Oliver Tootle, Nebraska Beta Marilyn Simpson Ford and Tim Burke taught us, entertained us and inspired us. The Foundation's Rhinestone Roundup dinner, songs, awards, Pi Phi Express, old friends, new friends—all expressed the magnitude of our wonderful Fraternity.

We are both excited and challenged by change as we begin a new biennium and move into a new century. Convention was a reminder that the very key to our success as a women's fraternity has been our ability to preserve our lasting values by making change work for us rather than against us. As Pi Phi adapts to changes in our society, there is a two-step commitment—first on behalf of the Fraternity to adjust, and second on the part of the members to participate. It is my wish that your chapters, clubs, pockets and carnation circles discover a way to meet the needs of our membership as you share the one constant that is always there no matter the change—friendship!

—Beth van Maanen Beatty, Grand President





Rebecca Kirkland laughs with Helen Lewis. It was Rebecca's first convention and Helen's 32nd.



Picking up notes at the message board.



The collegiate Nominating Committee members.

## The 1999 Convention Committee

During convention, it was rumored that Houston Pi Phis had wine and blue blood flowing through their veins. Their hearts were in every single detail in a sincere effort to give a huge Texas-sized welcome to Pi Beta Phi members. Under the leadership of former Houston, Texas Alumnae Club President and Emma Harper Turner Award winner Oklahoma Beta Donna Coffman Dawson, the executive committee and more than 400 local Pi Phis put in hours of planning to make convention fun and memorable.

Assistant Chairman Virginia Alpha Lynne Tyrrell Campbell said talent, time and service were generously given by committee members. "Many talented Pi Phis have spent hours and hours clipping and cutting, laughing and formulating the smallest of details," Lynne said. From sewing chair covers to getting Pi Phi flags flowing on Uptown's Post Oak Boulevard and decorating signs with the Texas state flower—it was done with Texas flair and style.

"It is true I've been living and breathing convention for more than two years, but the real praise has to go to the time, dedication and heart that our Houston Pi Phis have given to serve our sisters," Donna said.

## A Bubbly Announcement

After more than 30 years on Carondelet in St. Louis, Missouri, the Fraternity is planning for a future move of Central Office. Although Pi Phi's headquarters will still be in St. Louis, it will be located in a different area of the city in its own building.

Grand President Beth van Maanen Beatty made the announcement, after which alumnae and collegians celebrated by blowing bubbles. Former Grand Vice President of Finance Lou Ann Montgomery Carter said reasons for building a new headquarters building range from out-growing the current office space to reallocating investments.

For more information about the new headquarters, look in future issues of *The ARROW*.

# of Pi Phi



Alumnae find time to take a quick pic together.



Two Kansas Alpha stars.



Texas alumnae at the Wine Carnation banquet.



CPPs exchange ideas and a few laughs.



Alumnae at the Foundation's Rhinestone Roundup dinner.



Three Golden Arrow Iowa Gamma pledge sisters and friends since childhood.





Texas Gammas from Texas Tech University.



Legacies together at the Legacy Luncheon.



California collegians round up for a group shot.



Alumnae are all smiles.

# Laughter

## Honor Initiate

"It was like a renewal, I was thinking, 'that is what I believe, those are my values,'" said honor initiate Rebecca Kirkland, M.D., M.P.H. when thinking about convention's Preparatory Service. She said she enjoyed becoming part of a group whose members have common goals not only within the organization, but also within the community.

While serving on the boards of several organizations, including the Advisory Board of Nonfinancial Barriers to Health Care Access in Texas, University of Houston Health Law and Policy Institute and the Community Advisory Board for the Junior League of Houston, Rebecca has interacted with several area Pi Phis. She is delighted when she learns that a community or a city leader is a Pi Phi.

Rebecca is currently chief of the Academic General Pediatrics Section in the Department of Pediatrics at Baylor University as well as the associate dean for curriculum and chairman of the curriculum committee. For five years, she served as the coordinator for Community Access To Child Health (CATCH), a program to improve access to health care for all children. Now, she is a district director for the national CATCH program.

During convention, Rebecca says she felt completely welcomed, and she thanked Grand Council for their warmth and hospitality. She also greatly appreciated her sponsor, Texas Beta Virginia Holt McFarland, whom she described as a genuine friend, and a person you look at and say, "that's who I want to be like."

Rebecca's quick smile and gracious personality are a genuine reflection of a woman who is and will continue to be a woman of distinction in her profession, in her community, and now, in Pi Beta Phi. Rebecca said there is "nothing greater than working with a group of women," and she believes that Pi Phi is a capstone to much of what she has already done. "It's a good fit," she said.



Minnesota Alphas from the University of Minnesota.



Donna Dawson and the mayor's Pi Beta Phi Week proclamation.



Grand Council with honor initiate Rebecca Kirkland, M.D., M.P.H.



Alumnae singing some favorite Pi Phi tunes at a General Session.



1999-2000 Graduate Consultants.





Two past Grand Presidents and the Grand Vice President of Finance during a General Session.



Alumnae after a special convention event.



Foundation Board of Trustees and Director with Foundation speaker Kathleen Passanisi.

## Convention Programming

Collegiate and alumnae delegates, Alumnae Advisory Committee members and Chapter House Corporation delegates had the opportunity to learn up-to-date and important information, share ideas, laugh and reminisce during more than 20 general sessions, workshops, angel exchanges and guest speaker presentations. Topics ranged from fire safety to Fraternity Orientation to creative problem solving. Below you can find just a taste of the programming that was available to convention attendees.

- Pennsylvania Beta and Pi Beta Phi National Panhellenic Delegate Jean Wirths Scott spoke to collegians and alumnae on "How Forever Feels" at the luncheon honoring Pi Phi legacies.
- Among the multiple workshops Pi Phi's legal council Tim Burke facilitated, was a collegiate workshop titled "Staying Out of Legal Trouble—An Interactive Working Session." Chapter presidents were able to respond to different risk management scenarios and then receive expert legal advice based on their responses.
- Barbie Oliver Tootle, an Ohio Beta and the former Director of Special Projects and Special Assistant to the President at The Ohio State University spoke to collegians about "Life-long Leaders: Using an Arrow to Hit the Target of Life." She also advised alumnae on leading a cohesive team and still taking time for themselves during a presentation titled "I'm Too Busy to be Doing This! The Joys of Volunteer Leadership in Pi Beta Phi."
- The Foundation's guest speaker Kathleen Passanisi, a nationally-recognized motivator and humorist, spoke during a general session on "Managing Change by Changing Your Tune." Kathleen challenged attendees to see change as a positive step in a growing process.
- Nebraska Beta, former ARROW editor and the Fraternity's Historian Marilyn Simpson Ford kept attendees chuckling during the Fraternity Heritage Luncheon with her speech "Has it Been THAT Long?" a retrospective of Pi Phi's growth through the decades.



2001 Convention Chairman and her legacy daughter.



Parade of Banners at Dinner by Chapter.



Virginia Epsilon delegates.

# Encouragement



Illinois Alphas from Monmouth College.



Facilitators at an Alumnae Angel Exchange.



Alumnae at the Wine Carnation banquet.





1999-2001 Directors.



Graduate Consultants are also convention song leaders.



Three generations of legacies.



Former Grand Vice President of Finance.



Former Grand Vice President of Alumnae.



An Angel with a Heart Giving Tree.



Texas Eta delegates from Texas A & M University.



Past Grand Council members.



Collegians with an AAC member.

# Recognition

## Two of Pi Phi's Brightest Stars Honored

Monday evening, convention attendees paid tribute to two outstanding Pi Phi stars, former Grand Vice President of Finance Lou Ann Montgomery Carter and former Grand Vice President of Alumnae Carolyn Pavletich Lesh. Both officers retired after years of dedicated service.

As a collegian, Oklahoma Alpha Lou Ann Montgomery Carter received the Chapter Service Award and served as Pledge Class President, Chapter Vice President and Panhellenic Delegate. As an alumna, she served as president of two alumnae clubs, Alumnae Province President, Collegiate Province President, Director of Chapter House Corporations and Grand Vice President of Finance.

While serving as a Pi Beta Phi officer, Lou Ann brought every Chapter House Corporation into compliance with IRS rules and proper tax exempt certification. Most recently, Lou Ann introduced in-depth chapter accounting training through the 1998 Financial Forums for chapter treasurers, assistant treasurers and financial advisers; she turned the dream of breaking ground for a new headquarters into a reality; and she played a key role in Arrowmont's Red Barn renovation.

Throughout her alumna years, Texas Delta Carolyn Pavletich Lesh has served the Fraternity as Richardson-Plano, Texas Alumnae Club President, President of the Richardson Alumnae Panhellenic, Alumnae Province President, Director of Alumnae Records, National Panhellenic Conference Alternate Delegate, Grand Vice President of Membership and Grand Vice President of Alumnae.

In her different officer positions, Carolyn has implemented several important projects including an extension presentation, an alumnae dues direct-billing process and a ten-year membership recognition program. Under her direction, procedures and programs such as the *Focus on Alumnae* newsletter and alumnae Regional Leadership Retreats have flourished.





Foundation speaker Kathleen Passanisi.



Alumnae and collegians at the closing event.



Omega Province CPP and collegiate, Omega Province delegates.

## Directors for the Next Biennium

Directors for the 1999–2001 biennium are: Director of Chapter House Corporations West Ivonna Peterson McCabe, Director of Chapter Support Region II Ruth Neel Noble, Director of Chapter House Corporations East Patricia Emens Anderson, Director of Alumnae Extension Jill Jensen Meynen, Director of Membership Ann Johnson Gunn, Director of Collegiate Programming Joanne MaGirl Arnold, Director of Chapter Support Region I Karen Shelton Chevalier, Director of Alumnae Communications Betsy Harris Cantlie, Director of Finance Karen Consalus Price, Director of Chapter Support Region III Jane Landreth Russell, Director of Alumnae Advisory Committees Kristin Noer Olson, Director of Fraternity Education Fran DeSimone Becque, Director of Collegiate Extension and Rush Julie Geiger Shannon, Director of Alumnae Programming Susan Landreth Fry and Director of Academics MaryMargaret McDonough.

## Special Guests

Several former Grand Council members attended convention in Houston, Texas. These honored guests included Adrienne Hiscox Mitchell, Evelyn Peters Kyle, Helen Anderson Lewis, Carolyn Helman Lichtenberg, Jo Ann Minor Roderick, Jean Wirths Scott, Janet Goode Durham, Carol Inge Warren, Lucy Baker Warner, Betty Blades Lofton and Ann Dudgeon Phy.

## Mountains, Mines and Memories

During the closing General Session, members of the Denver, Colorado Alumnae Club, Province Officers and collegians made their big announcement—Denver, Colorado is the site for Pi Beta Phi's 63rd Biennial Convention, June 29–July 3, 2001.

Serving as General Chairman of the convention will be Colorado Alpha Heidi Dake Keogh. Other members of the Executive Committee are Hospitality Chairman Oklahoma Alpha Paige Phelps and Volunteers Chairman Oklahoma Alpha Cirelda Barnard Mills. Also instrumental in the planning will be Denver, Colorado Alumnae Club President Colorado Delta Amy Doran Inkell.

Committee members from the Mile-High City promise you'll feel like "you're on top of the world."

# Sisterhood



A collegian voting at the polls.



Legacies together at the closing event.



Delegates pose for a snapshot.



The Grand Vice President of Philanthropies proofreads convention information.



Former Graduate Consultants.



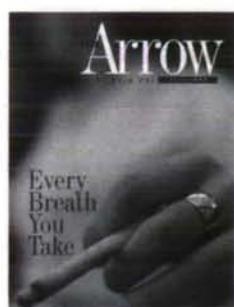
Collegians with the Rho Province CPP.



# From the Editor

## Achieving & Maintaining Excellence ... with your help

During the annual College Fraternity Editors Association conference in Saddlebrook, Florida, The ARROW and Pi Beta Phi were recognized with five awards. The Fall 1998 issue won the



Critics' Choice Award for best cover, and the article "Every Breath You Take," of the same issue, received third place for news article content. The video Pi Phi Firsts, which is now available for loan from Central Office, won first place in a new category, Multimedia Presentation. The ARROW Guide newsletter for chapter ARROW correspondents received a certificate of merit for general excellence in fraternity newsletters, and the Foundation's 1998 Annual Report received a certificate of merit for general excellence in the annual reports division.

The primary goal of the magazine is not to win awards but to serve as a means of communication between the Fraternity and its members, both collegiate and alumnae. The ARROW is Pi Phi's most effective public relations tool. Currently, the circulation of The ARROW is approximately 124,000. In addition to collegians and alumnae, Greek advisers and university administrators as well as other NPC and IFC groups also receive the magazine.

10

As Editor of The ARROW it is my responsibility to ensure that the integrity of our publication is maintained. Several guidelines have been developed to achieve this goal. Here are a few of our policies regarding inclusion of information, whether contributed by a collegian or alumna, in The ARROW. Policies of the magazine include:

### Letters to the Editor

You are invited to share your thoughts and comments on the Letters to the Editor page. In order for your letter to be published it must be signed with full name, address and chapter if applicable.

### Alumnae and Collegiate News

All names included in the magazine must be verified with our member database. Individuals listed in The ARROW must be initiated members in good standing. Chapter of initiation and maiden name will be included where applicable. As a general rule, we do not include bylines with contributed materials. Due to space limitations, wedding and birth announcements are not included in The ARROW.

### In Memoriam

Due to space limitations, it is a policy of The ARROW to not print obituaries in the magazine, with one exception, upon the death of a former Grand President. We wish we could print small obituaries about each of our members, but unfortunately, there isn't space. The one section in each ARROW devoted to those who have passed away, is our In Memoriam section. Initiation year and month and year of death follow each member's name. When submitting death notices to Central Office, please give month and year of death. Names cannot be listed without this information.

### Photographs

We accept black and white and color photographs. We cannot reproduce polaroid photographs, faxed photographs or color copies of photographs. Photographs will be returned if a self-addressed, stamped envelope is included. Only photographs of high quality and good taste are printed in the magazine.

The ARROW is a publication of, about and for members of Pi Beta Phi. We welcome any feedback from our readers. We have a publication to be proud of because of the support and interest of our audience. A special thanks to those individuals who have contributed materials to The ARROW—you make my job easy!

—Libby Gilkison Cannon



The ARROW invites comments about the magazine, its articles or any other topic of interest to our readers. In order for your letter to be published, please include full name, address and chapter of initiation. Letters may be edited for style, clarity and length. Send comments to 7730 Carondelet, Suite 333, St. Louis, MO, 63105 or e-mail [thearrow@primary.net](mailto:thearrow@primary.net).

# From the Reader

## Special Thanks

What a convention that was! The stars at night are big and bright ...

As many of you know, I was unable to be with you on the last day of convention, the day following my initiation. The sad news is that I missed being there in Houston with you, but the glad news is that I was able to have more time to reflect on the wonderful events of my initiation and the 62nd Biennial Pi Beta Phi Convention.

Before and during convention, I was impressed by the amazing attention to detail that was orchestrated by General Chairman Donna Dawson and Assistant General Chairman Lynne Campbell. The angels at strategic spots and the decorations and favors were only a few examples. The high quality of the arrangements including the notebook materials, lunches and dinners, and decorations made it so special. The willingness to change plans to accommodate as many as possible as on that first night when inclement weather caused airline delays and altered the start time of the opening dinner, showed the spirit of friendship and strength of the bond. The joy of being with old friends and meeting new ones, the genuine spirit of fellowship, and true interest of each other in common goals were so strong they were palpable.

The enthusiasm with which I, as the honor initiate, was received and cared for at every step of the way before and following initiation, I will always remember thanks to Ann Phy and Virginia McFarland. Grand President Beth Beatty and the Grand Council were warm and gracious and

welcoming, showing the Pi Beta Phi bond and spirit in action. They made the ceremony beautiful, meaningful and very special—it was all the more so because of the support and kindness of my dear friend and sponsor, Virginia McFarland. She introduced me to as many of her friends as she could see—and that was no small number!

I feel blessed to have been selected and initiated into a Fraternity with so many extraordinary women who have similar goals: to maintain strong friendships and to serve others. The true impact of the bond will take time to unfold, but I am looking forward to knowing each of you.

I am anticipating continuing to enjoy the bonds of the wine and blue.

**REBECCA T. KIRKLAND, M.D., M.P.H.**  
**TEXAS ALPHA**  
**HOUSTON, TEXAS**

Thank you so much for the article on the Red Barn. When I pledged Pi Phi, I was a little unsure of what I was getting into. It wasn't until our pledge retreat at the Red Barn that I began to feel that Pi Phi connection. At the time, I didn't realize how special the Red Barn was to Pi Phi or how special it would be to me. Thanks for bringing back sweet memories of my first taste of Pi Phi. Pi Phi continues to bring me in contact with beautiful angels.

**LURIE RAMSEY WALKER**  
**TENNESSEE GAMMA**  
**CARY, NORTH CAROLINA**

We are very excited to report the tremendous success of the first Dr. Jean Jones Memorial Walk for Cancer on the Ole Miss campus. More than 300 individuals gave their time, energy and financial support to benefit the Baptist Memorial Cancer Institute Patient Assistance Fund of Oxford and the Dr. Jean Jones Scholarship Fund.

We would like to recognize the outstanding collegians of the Mississippi Beta Chapter of Pi Beta Phi for their participation in the race. More than 10 women showed up at 7 a.m. in their letters with smiles on their faces.

It is a pleasure to work with women with such dedication to philanthropic events. We appreciate that Pi Beta Phi helped to make a difference in the fight against cancer!

**JENNIFER C. MCINTOSH**  
**ASSISTANT DIRECTOR OF HEALTH AND WELLNESS PROGRAMS**  
**THE UNIVERSITY OF MISSISSIPPI**

The Pennsylvania Theta Chapter at Villanova University would like to thank the Pennsylvania Iota Chapter at the University of Pennsylvania for graciously letting us have use of their house for our initiation. It was a huge success, and we hope to continue to plan events with them. They exemplified the true meaning of sisterhood through their kindness and warm hospitality to our sisters. We hope to return the favor to them in the future.

**MEREDITH CRONIN**  
**PENNSYLVANIA THETA**  
**CHAPTER SECRETARY**



# Award Winners



## Collegiate Awards

**BALFOUR CUP** (*Top Chapter*)—Kansas Beta (Kansas State University)

**STOOLMAN VASE** (*2nd*)—Texas Eta (Texas A & M University)

**PHILADELPHIA BOWL** (*3rd*)—Oklahoma Beta (Oklahoma State University)

**DIRECTORS' AWARD** (*4th*)—Texas Beta (Southern Methodist University)

**JO ANN MINOR RODERICK CHAPTERS OF EXCELLENCE** (*excluding top four, in alphabetical order*)—Arizona Alpha (University of Arizona), Iowa Beta (Simpson College), Iowa Gamma (Iowa State University), Michigan Alpha (Hillsdale College), Tennessee Beta (Vanderbilt University) and Virginia Eta (University of Richmond)

**ANNETTE MITCHELL MILLS AWARD** (*New Chapter Achievement*)—Connecticut Beta (Yale University)

### APP AWARD FOR SENIOR

**PROGRAMMING**—Michigan Alpha (Hillsdale College) HM: Ontario Alpha (University of Toronto) and Tennessee Delta (University of Memphis)

**NITA HILL STARK AWARD** (*Best Chapter History*)—Idaho Alpha (University of Idaho)

**HISTORIAN'S VASE** (*2nd Best History*)—Oklahoma Beta (Oklahoma State University) HM: Illinois Epsilon (Northwestern University), Missouri Gamma (Drury College), Oklahoma Alpha (University of Oklahoma) and West Virginia Alpha (West Virginia University)

**CENTENNIAL AWARD** (*Best Fraternity Orientation*)—Tennessee Delta (University of Memphis)

HM: Arizona Alpha (University of Arizona) and Texas Alpha (University of Texas)

**PI PHI SPIRIT AWARD**—California Iota (California State University, Chico), Georgia Alpha (University of Georgia), Iowa Zeta (University of Iowa), Kentucky Gamma (Eastern Kentucky University), Mississippi

Alpha (University of Southern Mississippi), Montana Alpha (Montana State University), Nebraska Gamma (Creighton University), Ohio Eta (Denison University), Texas Epsilon (University of North Texas) and Virginia Gamma (College of William & Mary)

**LINKS TO LITERACY AWARD**—Illinois Zeta (University of Illinois) HM: Virginia Zeta (Virginia Polytechnic Institute & State University)

**HELEN ANDERSON LEWIS AWARD** (*Community Service*)—New Mexico Alpha (University of New Mexico) HM: Oklahoma Beta (Oklahoma State University)

**LUCILE D. CARSON AWARD** (*Community Service*)—Florida Alpha (Stetson University) HM: New York Alpha (Syracuse University)

**D.C. ALPHA PANHELLENIC AWARD** (*Large*)—Missouri Alpha (University of Missouri) HM: Arizona Alpha (University of Arizona) and Iowa Gamma (Iowa State University) (*Small*)—Arkansas Alpha (University of Arkansas) HM: Montana Alpha (Montana State University)

**ELIZABETH S. KOZA AWARD** (*1st Standards*)—Arizona Alpha (University of Arizona)

**HARRIETTE W. EVANS AWARD** (*2nd Standards*)—Missouri Alpha (University of Missouri) HM: Florida Alpha (Stetson University) and Oklahoma Beta (Oklahoma State University)

**FRANCES ROSSER BROWN AWARD** (*Fraternity Heritage*)—Arizona Alpha (University of Arizona) HM: Alabama Gamma (Auburn University) and Michigan Alpha (Hillsdale College)

**LILLIAN BECK HOLTON AWARD** (*Best House Manager*)—Amanda Meecham, Florida Delta (University of Florida) HM: Mollie Appel, New Mexico Alpha (University of New Mexico)

**MARILYN SIMPSON FORD** (*Best ARROW Correspondent*)—Amy Gladstone, Missouri Gamma (Drury College) HM: Heather Rath, Wyoming Alpha (University of Wyoming)

**MAY L. KELLER AWARD** (*Best Arrowmont Programming*)—Georgia Alpha (University of Georgia) HM: Florida Alpha (Stetson University) and New York Epsilon (Rensselaer Polytechnic Institute)

**OLIVIA SMITH MOORE SILVER SLIPPER** (*Best Chapter Treasurer*)—Hilary Danlek, Virginia Gamma (College of William & Mary) HM: Jennifer Puppione, California Iota (California State University, Chico) and Alice Sloan, Texas Beta (Southern Methodist University)

**VERA MOSS BOWL** (*Most Improved S & S*)—Wisconsin Delta (Marquette University)

**SARAHJANE PAULSON VANASSE PITCHER** (*2nd Improved S & S*)—Ohio Eta (Denison University)

**ALICE WEBER JOHNSON BOWL** (*Top 10, Last 10 Years*)—Texas Eta (Texas A & M University)

**WESTCHESTER CLUB AWARD** (*Most Academically Improved Large Chapter*)—Kentucky Gamma (Eastern Kentucky University) HM: California Epsilon (San Diego State University) and Ohio Beta (Ohio State University)

**PI BETA PHI SCHOLARSHIP PLAQUE** (*Highest GPA, Large Chapter*)—California Alpha (Stanford University) HM: New Jersey Alpha (Princeton University), Pennsylvania Epsilon (Pennsylvania State University) and Virginia Epsilon (University of Virginia)

**GRAND COUNCIL SCHOLARSHIP INCENTIVE**—Connecticut Alpha (University of Connecticut) HM: Arkansas Beta (University of Arkansas-Little Rock) and Wyoming Alpha (University of Wyoming)





**DR. HAZEL R. McCUAIG AWARD**

(Highest GPA, Small Chapter)—  
Connecticut Beta (Yale University)  
HM: Florida Alpha (Stetson University)  
and Iowa Beta (Simpson College)

**MCCUAIG CANADIAN AWARD** (Highest  
GPA, Canadian Chapter)—Ontario  
Gamma (University of Guelph)

**ADDA P. WILLIAMS AWARD** (Best  
Academic Excellence Chairman)—  
Stacey Wheeler, Kentucky Gamma  
(Eastern Kentucky University)  
HM: Shannon Ritter, South Dakota  
Alpha (University of South Dakota)  
and Cheri Thurlow, Montana Alpha  
(Montana State University)

**BEST PROCEDURE NOTEBOOK**—  
Colorado Delta, Vice President of  
Social Advancement (Colorado  
School of Mines) HM: Tennessee  
Delta, Vice President of Mental  
Advancement (University of Memphis)

**COLLEGIATE ORIGINAL MELODY**—  
Heather Shearer, California Eta  
(University of California, Irvine)

**COLLEGIATE SERIOUS PARODY**—  
Pennsylvania Zeta Chapter  
(Washington & Jefferson College)

**COLLEGIATE LIGHT PARODY**—Emily  
Dowdy, Margaret Pollock and Peggy  
Wright, Texas Alpha (University of  
Texas)

**Alumnae Awards**

**IDEAL ALUMNAE CLUB**—Northern Virginia

**TOP 10 ALUMNAE CLUBS** (in alphabetical  
order)—Colorado Springs, Colorado;  
Dallas, Texas; Houston, Texas;  
Kansas City, Missouri-Shawnee  
Mission, Kansas; La Jolla, California;  
Manchester Area, Connecticut;  
Northern Virginia; Oklahoma City,  
Oklahoma; Seattle, Washington; and  
Tulsa, Oklahoma

**EMERGING EXCELLENCE AWARD**—  
Metrocrest, Texas HM: Boise, Idaho

**BEST ALUMNAE CLUB /CHAPTER  
RELATIONS**—Tucson, Arizona  
HM: Manchester Area, Connecticut  
and Stillwater, Oklahoma

**NASHVILLE ALUMNAE CLUB AWARD**—

Houston, Texas HM: Dallas, Texas  
and Northern Virginia

**JESSIE MOEUR FRENCH AWARD**  
(Alumnae Education)—Whittier Area,  
California

**NORTHERN VIRGINIA COMMUNITY SERVICE  
AWARD**—Western Reserve, Ohio

**ADRIENNE HISCOX MITCHELL AWARD**  
(Promotion of Arrowmont)—  
Mississippi Gulf Coast and Nashville,  
Tennessee HM: Kansas City,  
Missouri-Shawnee Mission, Kansas

**HOUSTON ALUMNAE CLUB LINKS TO  
LITERACY AWARD**—Hutchinson,  
Kansas HM: Casper, Wyoming

**EXCELLENCE IN COMMUNICATION  
AWARD** (in alphabetical order)—  
Chicago Windy City, Illinois;  
Cleveland East, Ohio; Del Sol North,  
California; Detroit West Suburban,  
Michigan; Highland Ranch, Colorado;  
Houston, Texas; Jefferson County,  
Colorado; Kansas City, Missouri-  
Shawnee Mission, Kansas; Katy, Texas;  
Lake Oswego-Dunthorpe, Oregon;  
Louisville, Kentucky; Manchester  
Area, Connecticut; Maryland-D.C.  
Suburban; New Orleans, Louisiana;  
Northern Virginia; Omaha, Nebraska;  
San Mateo County, California;  
Southwest Florida; and Tulsa, Oklahoma

**MARIANNE REID WILD AWARD** (Greatest  
Increase in Membership)—Dallas,  
Texas and St. Louis, Missouri

**Membership Highest Percent of Potential:**  
Under 50—Indianola, Iowa  
51 to 100—Hutchinson, Kansas  
101 to 150—Tyler, Texas  
151 to 250—Waco, Texas  
251 to 600—Fort Worth, Texas  
More than 600—Houston, Texas

**D.C. ALPHA FOR AAC** (Outstanding  
Service of an AAC)—Louisiana Alpha  
(Tulane University-Newcomb College)  
HM: Nevada Alpha (University of  
Nevada) and Tennessee Beta  
(Vanderbilt University).

**LEFT TO RIGHT:**

**AMY BURNHAM ONKEN AWARD**  
(Outstanding Individual Participation and  
Leadership)—Christy Andrews, Texas  
Gamma (Texas Tech University)

**CHAPTER SERVICE AWARD**—Sarah  
Yoselevsky, Virginia Gamma (College of  
William & Mary)

**JEAN WIRTHS SCOTT AWARD**  
(Individual Leadership)—Sarah Barnes,  
Virginia Eta (University of Richmond)

**EVELYN PETERS KYLE AWARD**  
(Alumnae Club Service)—Thelma  
Knebelkamp Long, Louisville, Kentucky

**EMMA HARPER TURNER AWARD**  
(Alumnae Club Leadership)—Marie  
Gruetzemacher Whitacre, Kansas City,  
Missouri-Shawnee Mission, Kansas

**CAROL INGE WARREN AWARD** (AAC  
Financial Adviser)—Lucy Palmer  
DiLeo, Florida Delta (University of  
Florida) HM: Brandi Davis Ewoldt,  
Texas Epsilon (University of North  
Texas) and Jeannine Van Wagenen  
Funk, Nevada Alpha (University of  
Nevada)

**SARA SHIPLEY BOWERS AWARD** (House  
Corporation)—Iowa Beta (Simpson  
College) HM: Georgia Alpha  
(University of Georgia)

**DOROTHY WEAVER MORGAN AWARD  
FOR FRATERNITY LOYALTY**—Adrienne  
Hiscox Mitchell, Kansas Alpha

**ALUMNAE ORIGINAL MELODY**—Luella  
Barr Dick, Del Sol North, California  
**ALUMNAE PARODY**—Nancy Hale Cobb,  
Houston, Texas



# Award Winners



**Director's Award**—Texas Beta (Susan Turner), **Philadelphia Bowl**—Oklahoma Beta (Julianna Peters), **Stoolman Vase**—Texas Eta (Shanna Standley), **Balfour Cup**—Kansas Beta (Colleen Bolin)



**Jo Ann Minor Roderick Chapters of Excellence** (excluding top four)—back: Iowa Gamma (Terri Naber), Michigan Alpha (Jennifer Fassett), Tennessee Beta (Anne Corona), Virginia Eta (Amanda Coyle); front: Arizona Alpha (Keralyn Dobson), Iowa Beta (Meredith Jennings)



**Jean Wirths Scott Award**—Sarah Barnes, **Virginia Eta** (Amanda Coyle), **Chapter Service Award**—Sarah Yoselevsky, **Virginia Gamma** (Amanda Engstrom), **Amy Burnham Onken Award**—Christy Andrews, **Texas Gamma**



**Top 10 Alumnae Clubs**—back: La Jolla, California (Phyllis Fazzari Speer), Oklahoma City, Oklahoma (Colette Denney Buxton), Tulsa, Oklahoma (Mary Snider Whitney), Manchester Area, Connecticut (Elizabeth McAvoy Stewart), Houston, Texas (Linda Walker Ligon), Kansas City, Missouri—Shawnee Mission, Kansas (Jennifer Johnson Wenzel); front: Dallas, Texas (Nancy Ragsdale Jones), Northern Virginia (Helen Ingham Pixton), Seattle, Washington (Nancy Johnson Anklam); not pictured: Colorado Springs, Colorado



**Grand Council Scholarship Incentive**—Connecticut Alpha (Emily Mannhaupt), **Pi Beta Phi Scholarship Plaque**—California Alpha (Tara Hale), **Adda P. Williams Award**—Stacey Wheeler, **Kentucky Gamma** (Denise Johnson) and **Westchester Club Award**—Kentucky Gamma (Denise Johnson), **Dr. Hazel R. McCuaig Award**—Connecticut Beta (Tiffany Wohlfeil), **McCuaig Canadian Award**—Ontario Gamma (Katie Butler)



**Evelyn Peters Kyle Award**—Thelma Knebelkamp Long, Louisville, Kentucky (Elisabeth Long Young), **Emma Harper Turner Award**—Marie Gruetzemacher Whitacre, Kansas City, Missouri—Shawnee Mission, Kansas (Barbara Lee Fay)

14



**Dorothy Weaver Morgan Award for Fraternity Loyalty**—Adrienne Hiscox Mitchell, Kansas Alpha



**Best Chapter/Club Relations**—Tucson, Arizona (Jennifer Mahon Harris), **D.C. Alpha for AAC**—Louisiana Alpha (Stephanie Haughwout Sherling), **D.C. Alpha for Small Panhellenic**—Arkansas Alpha (Casey Mote), **D.C. Alpha for Large Panhellenic**—Missouri Alpha (Mikaela Hunt)



**APP Award for Senior Programming**—Michigan Alpha (Jennifer Fassett), **Centennial Award**—Tennessee Delta (Corinne Murray), **Lillian Beck Holton Award**—Amanda Meecham, Florida Delta (Nicole Douglas), **Elizabeth S. Koza Award**—Arizona Alpha (Keralyn Dobson), **Harriette W. Evans Award**—Missouri Alpha (Mikaela Hunt), **Marilyn Simpson Ford**—Amy Gladstone, **Missouri Gamma** (Kathy Blumfelder)





**Pi Phi Spirit Award**—back: California Iota (Jozelle Zook), Georgia Alpha (Erin Wilson), Iowa Zeta (Kristine Althoff), Kentucky Gamma (Denise Johnson), Mississippi Alpha (Barat Schexnaildre); front: Montana Alpha (Hillary Haren), Nebraska Gamma (Peggy Cheng), Ohio Eta (Krista Smith), Texas Epsilon (Michelle Corbitt), Virginia Gamma (Amanda Engstrom)



**Vera Moss Bowl**—Wisconsin Delta (Katie Frazier), Sarahjane P. Vanasse Pitcher—Ohio Eta (Krista Smith), Alice Weber Johnson Bowl—Texas Eta (Shanna Standley), Annette Michell Mills Award—Connecticut Beta (Tiffany Wohlfeil)



**Nashville Alumnae Club**—Houston, Texas (Linda Walker Ligon), Emerging Excellence—Metrocrest, Texas (Brandi Davis Ewoldt), Houston Alumnae Club Links to Literacy Award—Hutchinson, Kansas (Carol Stockham Murray)



**Marianne Reid Wild Award**—Dallas, Texas (Nancy Ragsdale Jones) and St. Louis, Missouri (Nancy Steiner Sheridan)



**Best Procedure Notebook**—Colorado Delta (Leah Hooten), Olivia Smith Moore Silver Slipper—Hilary Darilek, Virginia Gamma (Amanda Engstrom), Sara Shipley Bowers Award—Iowa Beta (Meredith Jennings), Carol Inge Warren Award—Lucy Palmer DiLeo and Carol Inge Warren



**Links to Literacy Award**—Illinois Zeta (Kimberly Kluck), Lucile Douglas Carson Award—Florida Alpha (Susan Germer), Helen Anderson Lewis Award—New Mexico Alpha (Mollie Appel)



**Jessie Moeur French Award**—Whittier Area, California (Anne Nate Walker), Northern Virginia Award for Community Service—Western Reserve, Ohio (Saundra Frazier Luedecke)



**May L. Keller Award**—Georgia Alpha (Erin Wilson), Adrienne Hiscox Mitchell Award—Mississippi Gulf Coast (Lucia Fishel) and Nashville, Tennessee (Kendra Goddard Melnyk)



**Frances Rosser Brown Award**—Arizona Alpha (Keralyn Dobson), Nita Hill Stark—Idaho Alpha (Jessaka Montez), Historian's Vase—Oklahoma Beta (Julianna Peters)



**Alumnae Parody**—Nancy Hale Cobb, Houston, Texas



**Alumnae Original Melody**—Luella Barr Dick, Del Sol North, California (Diane Buehrig Schnoebelen)



**Collegiate Light Parody**—Texas Alpha (Allison Hazlewood), Collegiate Serious Parody—Pennsylvania Zeta (Jamey Schroll)



# Alumnae News



**INDIANA ZETA ANN WANTZ KING** has been named interim president of Brebeuf Jesuit Preparatory School in Indianapolis, Indiana. Ann has served on the school's Board of Trustees and has chaired its Development Committee for three years. She is also a member of the Board's Executive and Jesuit Identity Committees. Ann graduated with a bachelor's degree in business administration and has received several community service awards including: the Mayor's Volunteer Partnership Award, the Kate Milner Rabb Award given by the Women's Press Club of Indiana, the Outstanding Service Award given by the Family Support Center and the Service to Mankind Award. Ann and her husband, J.B., have three children.

**COLORADO ALPHA SISTERS HELEN INGHAM PIXTON AND ELIZABETH INGHAM** enjoyed taking a recent cruise together to New Zealand and Australia.

**INDIANAPOLIS, INDIANA ALUMNAE CLUB** members honored Indiana Beta Audra Snyder Bailey at the club's June meeting. Audra recently published a book about her 60-year teaching career titled "Hold Fast to Dreams: The Sixty Year Career of an Indiana Teacher." During her career, Audra pioneered the American Field Service Student Exchange Program, which helps students visit schools and homes abroad and in the United States.

On April 24, the **LINCOLN, NEBRASKA AND OMAHA, NEBRASKA ALUMNAE CLUBS** celebrated Founders' Day. Nebraska Beta Mary Hall Robinson received recognition for her 75 years in Pi Beta Phi. Early in the year, the Omaha, Nebraska Alumnae Club celebrated Colorado Alpha Mary Ann Kester Borchers' 50th year in Pi Phi. Nebraska Beta Betty Kimberly Reams' 70th year and another Nebraska Beta Margaret Robinson Thompson's 75th year in the Fraternity.

For the past 30 years, the **SAN MATEO COUNTY, CALIFORNIA ALUMNAE CLUB** has awarded scholarships to collegians attending one of the four schools in the Northern California Province. This year, California Beta Molly Fifer, and California Thetas Megan Collins and Anika Ix were recipients.

**OKLAHOMA ALPHA PHYLLIS BLANCHARD WRIGHT** starred in the Ann Arbor Civic Playhouse's adaptation of Horton Foote's "The Trip to Bountiful." Phyllis, who plays Carrie Watts, has appeared in other plays in the area.

This year, **TEXAS BETA LOUINE MCLARTY BARNES** celebrated her 80th year in Pi Beta Phi. She received a certificate from Grand President Beth van Maanen Beatty commemorating the event.

**GEORGIA ALPHA PAULA ROYDHOUSE** joined the architectural and interior design staff at Culpepper, McAuliffe and Meaders Inc. The firm is the ninth largest commercial interior design firm in Atlanta, providing architecture, interior architecture and interior design services to a broad range of clients throughout the United States, Canada and resort areas in the Caribbean. Paula graduated with a bachelor's of science degree from the University of Georgia in 1997.

**THE BELLEVUE-EASTSIDE, WASHINGTON ALUMNAE CLUB** hosted the Seattle, Washington Alumnae Club for its annual Founders' Day celebration. Club members enjoyed brunch and perspectives of where Pi Phi has been and where it is going as a Fraternity.

**TEXAS ALPHA GAY WARREN GADDIS'** advertising, marketing and public relations firm, T3, celebrated April Fool's Day with 500 clients, vendors and friends. The festivities included tasty treats from T3's client Taco Cabana.

After working for the Fulbright Commission in Egypt for three years, and serving as superintendent of schools in the Bahamas, **CALIFORNIA EPSILON GERI BERG WILLIS** is the house mother for a fraternity at Michigan State University. Geri is the first female house mother for a male fraternity at Michigan State in more than 20 years.





**TEXAS DELTA ANNE GOLDING STELLE** was chairman of the American Association of Singapore George Washington Ball. Arkansas Alpha Lori Campbell Rose was the committee chairman of artwork and printing for the ball. Eight hundred people attended this event, which is the premier American community formal social event in Singapore.

The Seven Lake Kiwanis Club recently recognized **VIRGINIA GAMMA KATHERINE RHODES HODGE**, a member of the Sandhills of North Carolina Carnation Circle, with its 1999 Human and Spiritual Values Award. Kay has been involved for more than 12 years in the Guardian ad litem program, which helps recommend the best environment for neglected or abused children. She also provides mentoring for Work First clients—those who have recently moved from welfare to the workplace. Kay also is involved in the League of Women Voters of Moore County and was its former president. She continues to be active in the American Association of University Women (AAUW) and the Ruth Pauley lecture series.

**MISSOURI BETA PATRICIA MEISEL MCBRIDE** cut the ribbon at the opening ceremony for a new exhibit at the historic DeMenil Mansion in downtown St. Louis. The restored third floor is the new permanent home to a World's Fair memorabilia display, the largest public display of exposition souvenirs in the world. The collection is named after its owner, and Pat's father, Joe A. Meisel Jr.



**THE SEATTLE, WASHINGTON ALUMNAE CLUB** welcomed Arrowmont Ambassador Illinois Zeta Joann Weibel Moe to their recent philanthropy meeting. Members enjoyed learning more about Arrowmont, and watching Bonnie Klein, an Arrowmont instructor, give a live wood-turning demonstration on a mini lathe.

**COLORADO DELTA KRISTIN WESTWATER McDONALD** cofounded T2 Technologies in Englewood, Colorado, which provides business telecommunications services and smart cards. Smart cards are much like a credit card, only with a chip in them instead of the normal magnetic strip. The chip holds information that could help people quickly make monetary and technological transactions.

Five **NEW YORK DELTAS** of the 1949 class had a reunion in Virginia this past spring to celebrate their Golden Arrow year. Eight members of this class have been circulating a round robin letter since graduation.

**OKLAHOMA ALPHA CHIKAGE WINDLER TURNER** recently moved to Dallas, Texas to be meteorologist for Texas Cable News, a TV station owned by Belo Corp. Chikage previously worked as a meteorologist and reporter for WVEC-TV, the ABC affiliate in Norfolk, Virginia.

**THE KNOXVILLE, TENNESSEE ALUMNAE CLUB** hosted its annual senior dinner honoring graduating seniors from the University of Tennessee. The alumnae shared information with the collegians to help them easily make the transition from collegiate life to alumnae life.



**ABOVE LEFT:** Five women are now, not only real-life sisters and Pi Phi sisters, but they are Golden Arrows, too. Alabama Alphas Mary Price McCord, Florence Price Nix, Pauline Price Owen, Betty Price Hughes and Katherine Price Garmon all graduated from Birmingham-Southern College between 1937 and 1948. All five sisters have celebrated, or will shortly celebrate, their 50th wedding anniversaries.

**ABOVE CENTER:** After moving to Japan with her husband, Ohio Alpha Vinita Koshal Kennedy joined a book club where she met three other Pi Phis. This meeting heightened her curiosity to know just how many Pi Phis were living in Tokyo and surrounding areas. Vinita found no Pi Phi alumnae clubs currently in existence in Japan, and consequently formed the Tokyo, Japan Alumnae Pocket, which has seven members.

**ABOVE:** During its Founders' Day Dinner, the Mt. Pleasant, Iowa Alumnae Club helped club member Iowa Alpha Edith Whiting celebrate her 80th year in Pi Beta Phi. Edith's mother, Anna Crane Whiting began the Pi Phi tradition when she became an Iowa Iota I.C. in 1882. Edith's great uncle owned the jewelry store where the first Arrow badges were made for Iowa Alpha, the oldest chapter in continuous existence. While teaching school, Edith helped charter the Rockford, Illinois Alumnae Club and was named the 1977 Panhellenic Woman of the Year during her term as club president.





**NEBRASKA BETA GLENNA BERRY-HORTON** (pen name Glenna Luschei) recently published "A Near Country—Poems of Loss," a book of Glenna's and two other contemporary authors' work. Glenna is the founding editor and publisher of Solo Press in Carpinteria, California. She has published several volumes of

collected poems written by such authors as Ron Koertge, whose poem 1989 was included in "The Best Poems of 1998," and Sherman Alexie the screenwriter of "Smoke Signals," which won the 1998 Sundance Film Festival's Filmmaker's and Audience Award. Since her college graduation, Glenna has received two master's degrees and has earned three scholarships in Portuguese from the University of California at Santa Barbara. She has also earned a Fellowship for creative work in Taos, New Mexico, a Centrum Fellowship, a D.H. Lawrence Fellowship and three Regents Fellowships from the University of Nebraska. "A Near Country—Poems of Loss" is Glenna's 19th book of poetry.

As a result of her work with the Hurricane Creek Program, **SOUTH CAROLINA ALPHA ANNE LEVERETTE SANDERLIN** won the 1999 Pee Dee Region J.C. Penney Golden Rule Award for outstanding volunteerism. The Hurricane Creek Program is for boys ages 13 to 17, who are considered at risk. Each boy is paired with a wild horse, which, with the help of experts, they tame and befriend. The group then takes a trip from Darlington, South Carolina to the Dixie Stampede in Myrtle Beach, South Carolina with the program director and trail boss. Last year, regional and local media covered this event, and it appeared on NBC Nightly News.

In April, **KANSAS ALPHA JANETTE MONSEES COLUMBIA** displayed her work at the School of Art and Design Gallery on Georgia State University's campus.

**FORT WAYNE, INDIANA ALUMNAE CLUB** members participated in the American Cancer Society's Making Strides Against Breast Cancer. During the event, several members walked to raise money while other members helped with registration, information and parking.

**THE POTOMAC FALLS, VIRGINIA ALUMNAE CLUB** held a meeting where they reflected on the club's growth and participated in a Cookie Shine. New club officers also were inducted.

#### **THE CLEARWATER, FLORIDA**

**ALUMNAE CLUB** celebrated its 40th Anniversary with a potluck dinner. Two charter members and five past club presidents were among those who attended the event. The club was chartered in May 1959.

#### **ILLINOIS ALPHA MARLENE PIERCE**

**GREGOR** received the Bloomington-Normal YWCA Women of Distinction Award. Marlene was selected in the arts and entertainment category based on her advocacy, teaching and skills in creative and performing arts. Marlene is a member of the Bloomington-Normal, Illinois Alumnae Club.

Illinois State University gave **VERMONT BETA JANE COMPAGNA REGGIO** the Esprit de Corps award for outstanding and dedicated work while she was the President of the Administrative Professional Council. Jane also received the Distinguished University Service Award for her outstanding contribution to the university. Jane is the Director of Student Life at Illinois State University.

Seven members of the **NEW YORK-MANHATTAN AREA ALUMNAE CLUB** spoke with Connecticut Beta members at Yale University about careers ranging from pharmaceutical sales to law. Designed to be a panel discussion, topics included which industries are most supportive of women and which graduate programs are most useful in everyday life. The alumnae hope that the collegians who participated in the workshop will utilize the network of Pi Phi working in New York City and will join the alumnae club following graduation.





**BERNICE VANOVERSTRAETEN  
MILLER**  
Connecticut Alpha  
Manchester Area, Connecticut  
Alpha Province

***Evelyn Peters Kyle Award***

Originally presented in 1971 by the Alumnae Directors and the Alumnae Province Presidents, this annual award is for club service. The intent of this award is to honor an alumna for exceptional service to an alumnae club by performing those duties often unrecognized; for example, service on telephone committees, arrangements, hospitality, etc. Judging criteria include promoting the ideals of Pi Beta Phi, reliability, initiative, consistent contribution to the well-being of the club and unstinting loyalty.



**MIRIAM DAVIS SPENCER**  
Ohio Epsilon  
Philadelphia-Main Line,  
Pennsylvania  
Gamma Province



**ELIZABETH CHAMBERS  
GEORGE**  
Virginia Gamma  
Richmond, Virginia  
Delta Province



**JUDY LACKEY BOWDISH**  
New Mexico Alpha  
Greater Raleigh, North  
Carolina  
Epsilon Province



**CAROLYN CREWS-WHITBY**  
Florida Beta  
Orlando-Winter Park,  
Florida  
Zeta Province



**ELIZABETH JACOBS ALEXANDER**  
Oklahoma Beta  
Stuart Area, Florida  
Eta Province



**NORMA THOMPSON RERUCHA**  
Michigan Alpha  
Toledo, Ohio  
Theta Province



**SAUNDRA FRAZIER LUEDECKE**  
Indiana Delta  
Western Reserve, Ohio  
Iota Province



**THELMA KNEBELKAMP LONG**  
Kentucky Alpha  
Louisville, Kentucky  
Kappa Province



**MAVILLA RAINEY RICHTER**  
Indiana Gamma  
Indianapolis, Indiana  
Lambda Province



**LAURIE MITCHELL GORNIK**  
Illinois Zeta  
Glen Ellyn-Wheaton,  
Illinois  
Mu Province



**CAROL DAUGHERTY EGAN**  
Illinois Beta-Delta  
Galesburg, Illinois  
Nu Province



**NANCY EARLE ERICKSON**  
California Zeta  
St. Paul, Minnesota  
Omicron Province



**MARILYN DAVIS STROTHMAN**  
Iowa Alpha  
Mt. Pleasant, Iowa  
Pi Province



**MARGARET MITCHELL  
PLUNKETT**  
Missouri Alpha  
Kansas City, Missouri-  
Shawnee Mission, Kansas  
Rho Province



**HELEN SCOTT BUXTON**  
Oklahoma Alpha  
Oklahoma City, Oklahoma  
Tau Province



**SHARON WILLIAMS ZODA**  
Texas Zeta  
Metrocrest, Texas  
Upsilon Province





**JOAN VALAER SCHELL**  
Washington Beta  
Bay Area, Texas  
Phi Province



**KARIN GUSTAFSON DAVIDSON**  
New Mexico Beta  
Las Cruces, New Mexico  
Chi Province



**MARGARET HUBBARD SCHILUP**  
Illinois Epsilon  
Denver, Colorado  
Psi Province



**MARILI HUFFMAN LIBKE**  
Washington Alpha  
Wenatchee, Washington  
Omega Province



**ALEXANDRA SCHWEIER ULLMAN**  
Oregon Gamma  
Portland, Oregon  
Alpha-Beta Province



**BETTY REED PACKARD-VORIS**  
Indiana Alpha  
San Francisco, California  
Alpha-Gamma Province



**VIRGINIA GIBSON CLAY**  
Illinois Beta-Delta  
South Bay, California  
Alpha-Delta Province



**ELIZABETH BOGUE OBERTREIS**  
Indiana Epsilon  
Del Sol North, California  
Alpha-Epsilon Province



**MARILYN TAYLOR PERRY**  
New York Alpha  
Southern Fairfield County,  
Connecticut  
Alpha Province

### *Emma Harper Turner Award*

Announced at the 1993 Convention in recognition of the establishment of the Alumnae Department in 1893, this award honors an alumna for exceptional leadership at the local club level. Serving as an effective alumnae club officer, aiding in recruiting and maintaining dues-paying members, acting as a role model in promoting Pi Phi loyalty, displaying creativity and flexibility in programming, encouraging long-range planning in her club, and broadening the scope of local alumnae by promoting the international aspects of the Fraternity are criteria for the award.



**DEBORAH GENDREAU**  
Connecticut Alpha  
New York City-Manhattan,  
New York  
Beta Province



**PHYLLIS BROWNLEE BLAIR**  
Kentucky Beta  
Pittsburgh-South Hills,  
Pennsylvania  
Gamma Province



**MARY PETTICREW ONKEN**  
Indiana Epsilon  
Richmond, Virginia  
Delta Province



**ANNE ANDERSON MCKNIGHT**  
Tennessee Gamma  
Charlotte, North Carolina  
Epsilon Province



**DEBORAH HEINA LEIDER**  
Florida Beta  
Orlando-Winter Park,  
Florida  
Zeta Province



**DONNA WATEROUS FLECK**  
Iowa Gamma  
Boca Raton, Florida  
Eta Province





**JOANNE FRENCH TAYLOR**  
Ohio Beta  
Columbus, Ohio  
Iota Province



**LINDA KOVICH KENNEY**  
Indiana Gamma  
Indianapolis, Indiana  
Lambda Province



**JUDITH DAVIS WHITACRE**  
Ohio Zeta  
Arlington Heights, Illinois  
Mu Province



**SARAH HEAD STAMBAUGH**  
Illinois Alpha  
Springfield, Illinois  
Nu Province



**NANCY BLUM HADDEN**  
Louisiana Alpha  
New Orleans, Louisiana  
Xi Province



**MARY LYNN MEYER ELVER**  
Iowa Gamma  
Milwaukee, Wisconsin  
Omicron Province



**TERESA HAFNER TEUTSCH**  
South Dakota Alpha  
Omaha, Nebraska  
Pi Province



**MARIE GRUETZEMACHER**  
**WHITACRE**  
Missouri Alpha  
Kansas City, Missouri-  
Shawnee Mission, Kansas  
Rho Province



**LYNDA SELMAN SWENTON**  
Oklahoma Alpha  
Tulsa, Oklahoma  
Tau Province



**KAREN MOORE SHUTTEE**  
Texas Alpha  
Dallas, Texas  
Upsilon Province



**PAM SPROWL DIEHL**  
Indiana Delta  
Katy, Texas  
Phi Province



**JOAN PRATT SNODGRASS**  
Texas Delta  
Austin, Texas  
Chi Province



**BETH BEAMER DEAKINS**  
Kansas Alpha  
Fort Collins, Colorado  
Psi Province



**LINDA KNUTZEN BARBO**  
Washington Alpha  
Seattle, Washington  
Omega Province



**KIM YOST THEIM**  
Oregon Alpha  
Lake Oswego-Dunthorpe,  
Oregon  
Alpha-Beta Province



**NANCY TROGMAN**  
Illinois Theta  
San Francisco, California  
Alpha-Gamma Province



**KATHLEEN ERICKSON BRIDGES**  
Utah Alpha  
Central Orange County,  
California  
Alpha-Delta Province



**PHYLLIS FAZZARI SPEER**  
Massachusetts Alpha  
La Jolla, California  
Alpha-Epsilon Province

**NOT PICTURED:**

**COLLEEN CARROLL DOYLE**  
Ohio Beta  
Detroit West Suburban,  
Michigan  
Theta Province

**SUSAN WALKER HEESCHEN**  
Alabama Alpha  
Birmingham, Alabama  
Kappa Province



## Directory

The following pages include the complete Fraternity Directory. Collegiate chapters and alumnae clubs are listed alphabetically by state. Contact Central Office for directory information for chapter presidents and alumnae club presidents. The complete Fraternity Directory appears in the Fall issue of The ARROW only. The listing is published for the private use of our members. Unauthorized use is prohibited.

### Former Grand Presidents

- ELIZABETH TURNER ORR**—Oregon Alpha, 9450 SW Brentwood Place, Tigard, OR 97224  
**JEAN WIRTHS SCOTT**—Pennsylvania Beta, 1186 Cedarwood Drive, Moraga, CA 94556  
**CAROLYN HELMAN LICHTENBERG**—Ohio Alpha, 1064 Westbrooke Way, Atlanta, GA 30319  
**JO ANN MINOR RODERICK**—Oklahoma Beta, 701 Greystone, Stillwater, OK 74074

### Officer Emerita

- GRAND TREASURER EMERITA**—Orpha O'Rourke Coenen, Indiana Delta, PO Box 8, Little Chute, WI 54140

### Grand Council

- GRAND PRESIDENT**—Beth van Maanen Beatty, Texas Gamma, 1506 San Sebastian Lane, Nassau Bay, TX 77058  
**GRAND VICE PRESIDENT OF COLLEGIANS**—Sarah Ruth Mullis, South Carolina Alpha, 10 Kings Tavern Place, Atlanta, GA 30318  
**GRAND VICE PRESIDENT OF ALUMNAE**—Emily Russell Tarr, Texas Beta, Rt 2 Box 477-B, New Boston, TX 75570  
**GRAND VICE PRESIDENT OF FINANCE**—Maurine Hager Jones, Montana Alpha, 14 Dogwood Court, Walnut Creek, CA 94598  
**GRAND VICE PRESIDENT OF MEMBERSHIP**—Kay Knittle Brock, Colorado Alpha, 5459 West 85th Terrace, Shawnee Mission, KS 66207  
**GRAND VICE PRESIDENT OF PHILANTHROPIES**—Lois Huston Ross, Indiana Delta, 322 Spirea Drive, Dayton, OH 45419  
**GRAND VICE PRESIDENT OF PROGRAM DEVELOPMENT**—Linda Noel Ibsen, Colorado Beta, 5241 Lichen Place, Boulder, CO 80301

### Directors

- DIRECTOR OF ACADEMICS**—MaryMargaret McDonough, Maryland Beta, 217 Prospect Avenue #12A-2C, Cranford, NJ 07016  
**DIRECTOR OF ALUMNAE ADVISORY COMMITTEES**—Kristin Noer Olson, Indiana Delta, 2250 Wessman Parkway, Cherry Valley, IL 61016  
**DIRECTOR OF ALUMNAE COMMUNICATIONS**—Betsy Harris Cantile, New York Gamma, 805 Hanover Road, Gates Mills, OH 44040  
**DIRECTOR OF ALUMNAE EXTENSION**—Jill Jensen Meynen, Illinois Iota, 3564 Del Amo Boulevard #A, Torrance, CA 90503  
**DIRECTOR OF ALUMNAE PROGRAMMING**—Susan Landreth Fry, Texas Delta, 2660 South University Boulevard #1, Denver, CO 80210  
**DIRECTOR OF CHAPTER HOUSE CORPORATIONS (EAST)**—Patricia Emens Anderson, South Carolina Alpha, 1903 Petit Bots Street North, Jackson, MS 39211  
**DIRECTOR OF CHAPTER HOUSE CORPORATIONS (WEST)**—Ivonna Peterson McCabe, Washington Gamma, 1328 North Jackson Avenue, Tacoma, WA 98406  
**DIRECTOR OF CHAPTER SUPPORT, REGION I**—Karen Shelton Chevalier, California Delta, 8509 Browning Court, Annandale, VA 22003

- DIRECTOR OF CHAPTER SUPPORT, REGION II**—Ruth Neel Noble, California Delta, 2564 Via Carrillo, Palos Verdes Estates, CA 90274  
**DIRECTOR OF CHAPTER SUPPORT, REGION III**—Jane Landreth Russell, Arizona Alpha, 5711 North 73rd Place, Scottsdale, AZ 85250  
**DIRECTOR OF COLLEGIATE EXTENSION & RUSH**—Julie Geiger Shannon, Kentucky Beta, 29 Lenape Trail, Chatham, NJ 07928  
**DIRECTOR OF COLLEGIATE PROGRAMMING**—Joanne MaGirl Arnold, Texas Beta, 32640 Spinnaker Drive, Avon Lake, OH 44012  
**DIRECTOR OF FINANCE**—Karen Consalus Price, Missouri Alpha, 1504 Kingstream Circle, Herndon, VA 20170  
**DIRECTOR OF FRATERNITY EDUCATION**—Frances DeSimone Becque, New York Alpha, 2608 Kent Drive, Carbondale, IL 62901  
**DIRECTOR OF MEMBERSHIP**—Ann Johnson Gunn, Louisiana Beta, 2207 Salisbury Lane, Houston, TX 77019

### Appointed Officers

- ANNIVERSARY CELEBRATIONS COORDINATOR**—Joy Vanasse Goodenough, Washington Beta, 3932 West Barrett Street, Seattle, WA 98199  
**CONVENTION COORDINATOR**—Carolyn Pavletich Lesh, Texas Delta, #1 Forest Park, Richardson, TX 75080  
**CONVENTION SITE COORDINATOR**—Martha Sherman Malsbary, Indiana Delta, 10014 Craig Drive, Overland Park, KS 66212  
**ELECTIONS COORDINATOR**—Jo Ann Minor Roderick, Oklahoma Beta, 701 Greystone, Stillwater, OK 74074  
**FRATERNITY ARCHIVIST**—Frances DeSimone Becque, New York Alpha, 2608 Kent Drive, Carbondale, IL 62901  
**FRATERNITY HISTORIAN**—Marilyn Simpson Ford, Nebraska Beta, 268 Underwood Drive NW, Atlanta, GA 30328  
**MUSIC CHAIRMAN**—Jeannine Van Wagenen Funk, Nevada Alpha, 3290 Piazza Circle, Reno, NV 89502  
**ASSISTANT MUSIC CHAIRMAN**—Jan Kinnure Hillesland, Washington Alpha, PO Box 627, Grapeview, WA 98546  
**NATIONAL PANHELLENIC CONFERENCE DELEGATE**—Jean Wirths Scott, Pennsylvania Beta, 1186 Cedarwood Drive, Moraga, CA 94556  
**NPC FIRST ALTERNATE**—Carol Inge Warren, North Carolina Beta, 5439 Cascade Drive, Lisle, IL 60532  
**NPC SECOND ALTERNATE**—Ellie Moore Merrick, Illinois Beta-Delta, 3200 Poinsettia Avenue, Manhattan Beach, CA 90266  
**NPC THIRD ALTERNATE**—Jill Tucker Read, Tennessee Beta, 1005 Temple Grove, Winter Park, FL 32789  
**PARLIAMENTARIAN**—Janice Shrader Falk, Nebraska Beta, 3970 Trails End Lane, Fort Calhoun, NE 68023  
**RISK MANAGEMENT OFFICER**—Michelle Murrell Goseco, California Eta, 8 Sepulveda, Rancho Santa Margarita, CA 92688  
**SUPERVISOR OF CHAPTER HISTORIES**—Penelope Heyl Moss, Kansas Beta, 14024 Pinnacle Drive, Wichita, KS 67230

### Fraternity Committees

- CANADIAN PHILANTHROPIES COMMITTEE**  
**CHAIRMAN**—Helen Steeves Jull, Alberta Alpha, 1502 330 26th Avenue SW, Calgary AB T2S 2T3 CANADA  
**CAROLYN HELMAN LICHTENBERG CREST AWARD COMMITTEE**  
**CHAIRMAN**—Emily Russell Tarr, Texas Beta, Rt 2 Box 477-B, New Boston, TX 75570  
 Mary Loy Tatum, Oklahoma Beta, 2201 Burgee Court, Reston, VA 20191  
 Patricia Root Bash, Indiana Beta, 6161 Trails End, Peoria, IL 61614  
**CONVENTION COMMITTEE**  
**CHAIRMAN**—Heidi Dake Keogh, Colorado Alpha, 63 Fairway Lane, Columbine Valley, CO 80123  
 Cirrelda Barnard Mills, Oklahoma Alpha, 1985 Stony Hill Road, Boulder, CO 80303  
 Paige Phelps, Oklahoma Alpha, 628 South Vine Street, Denver, CO 80209

### HOLT HOUSE COMMITTEE

- CHAIRMAN**—Leisa Ebeling Lowrey, Ohio Eta, 735 East Timberlin Lane, Jasper, IN 47546  
**SECRETARY**—Kathleen June Hanson, South Dakota Alpha, 2010 Douglas Street, Sioux City, IA 51104  
**FINANCIAL SECRETARY**—Patricia Baird Link, Illinois Alpha, 11915 Bardmont, St. Louis, MO 63126  
**PUBLICITY**—Mary Kay Bauman Larson, Wisconsin Alpha, 313 Everglade Drive, Madison, WI 53717  
**MONMOUTH REPRESENTATIVE**—Jeanne Gittings Robeson, Illinois Alpha, 2290 55th Street, Monmouth, IL 61462

### LEGISLATIVE COMMITTEE

- CHAIRMAN**—Lynn Partleton Hudy, Wisconsin Alpha, 4454 North Maryland Avenue, Milwaukee, WI 53211  
 Peggy Wilson Lawrence, Tennessee Gamma, 411 Ellendale Avenue, Nashville, TN 37205  
 Jan Chandler Randle, Kansas Beta, 9120 Lake Point, Wichita, KS 67226

### LINKS TO LITERACY COMMITTEE

- CHAIRMAN**—Camilla Philon Humphrey, South Carolina Alpha, 16 Conifer Square, Augusta, GA 30909  
 Bobbi Boyd Bragen, West Virginia Gamma, 5 Harding Circle, Enfield, CT 06082  
 Joan Scholes Hill, Kansas Alpha, 3772 Wonderland Hill Avenue, Boulder, CO 80304

### NOMINATING COMMITTEE

- CHAIRMAN**—Lisa Masters, Georgia Alpha, PO Box 214, Fayetteville, GA 30214  
 Alison Hennig Moore, Florida Gamma, 2525 Sycamore, Colorado Springs, CO 80906  
 Mary Lu Pendergrast Meixell, Tennessee Delta, 4926 Wheatstone Drive, Fairfax, VA 22032



# Fraternity Directory

## SETTLEMENT SCHOOL BOARD OF GOVERNORS

- CHAIRMAN**—Dawn Sheeler Ford, Maryland Beta, 1936 Stonebrook Drive, Knoxville, TN 37923  
**VICE CHAIRMAN**—Barbara Blanks Bullard, Tennessee Gamma, 1118 Blue Springs Road, Franklin, TN 37069  
**SECRETARY**—Phyllis Fazzari Speer, Massachusetts Alpha, 5978 Karesue Lane, San Diego, CA 92122  
**TREASURER**—Carolyn Brown Ferebee, Tennessee Beta, 419 Forest Grove Drive, Richardson, TX 75080

## MEMBERS OF THE BOARD

- Martha Wohler Bickel, Missouri Beta, 30 Huntleigh Woods, St. Louis, MO 63131  
Sandra Blain, Arizona Beta, Arrowmont, 567 Parkway, Gatlinburg, TN 37738  
Anne Ward Burton, Iowa Gamma, 1989 Siringo Road, Santa Fe, NM 87505  
Catherine Nelson Evans, Texas Gamma, 2217 Patterson Place, Arlington, TX 76012  
Mary Ann Behlen Hruska, Nebraska Beta, 133 Springside Road, Walnut Creek, CA 94596  
Kilmeny Dunne Jackson, Kansas Alpha, 4047 West 124th Terrace, Leawood, KS 66209  
Sammye Johnston, Arkansas Alpha, 4723 Crestwood Drive, Little Rock, AR 72207  
Carolyn Helman Lichtenberg, Ohio Alpha, 1064 Westbrooke Way, Atlanta, GA 30319  
Margaret Ann Struble Norris, Iowa Gamma, 1302 Wickford Place, Huron, OH 44839  
Jill Lanman Schneider, Alabama Gamma, 21 Augusta Court, Greenville, SC 29605  
Suchitramba Urs, Iowa Gamma, Apartment 10114, 500 110th Avenue North, St. Petersburg, FL 33716  
Beth van Maanen Beatty, Texas Gamma, 1506 San Sebastian Lane, Houston, TX 77058  
Sarah Ruth Mullis, South Carolina Alpha, 10 Kings Tavern Place, Atlanta, GA 30318  
Emily Russell Tarr, Texas Beta, Rt 2 Box 477-B, New Boston, TX 75570  
Maurine Hager Jones, Montana Alpha, 14 Dogwood Court, Walnut Creek, CA 94598  
Kay Knittle Brock, Colorado Alpha, 5459 West 85th Terrace, Shawnee Mission, KS 66207  
Lois Huston Ross, Indiana Delta, 4531 Royal Ridge Way, Dayton, OH 45429  
Linda Noel Ibsen, Colorado Beta, 5241 Lichen Place, Boulder, CO 80301

## STUDENT LOANS COMMITTEE

- CHAIRMAN**—Nancy Fogle Pollard, Arkansas Beta, 120 Hume Lane, Bakersfield, CA 93309  
Marisa Morgan Dallman, Kansas Alpha, PO Box 860077, Shawnee Mission, KS 66286  
Sally Hanson Flaherty, Washington Gamma, 13311 Bracken Fern Drive NW, Gig Harbor, WA 98332

## Consultants

### CHAPTER SERVICES COORDINATOR/GRADUATE

- CONSULTANT COORDINATOR**—Jessica Lyn Manning, Washington Beta, 7730 Carondelet, Suite 333, St. Louis, MO 63105

- TRAVELING GRADUATE CONSULTANTS**—Anne-Marie Anderson, New York Alpha; Christy Andrews, Texas Gamma; Stephanie Hardie, Nevada Alpha; Dena Long, Texas Epsilon; Lauren Mengel, Georgia Alpha; Sarah Orr, Illinois Epsilon; Kelley Teague, Florida Delta

- RESIDENT GRADUATE CONSULTANT**—Jennifer Bills, California Zeta

## Pi Beta Phi Central Office

- 7730 Carondelet, Suite 333, St. Louis, MO 63105  
Phone: (314) 727-7338  
FAX: (314) 727-8049  
E-mail: [centraloffice@piphico.org](mailto:centraloffice@piphico.org)  
Web site: [www.pibetaphi.org](http://www.pibetaphi.org)  
**EXECUTIVE DIRECTOR**—Renée Ross Mercer, Iowa Zeta  
**CONTROLLER**—Tisha Hamasaki  
**ARROW EDITOR/COMMUNICATIONS COORDINATOR**—Elizabeth Gilkison Cannon, Missouri Alpha  
**Pi Phi Express**—(800) 322-1867  
Web site: [www.pibetaphi.org/purch.htm](http://www.pibetaphi.org/purch.htm)

## Arrowmont School of Arts and Crafts

- Box 567, Gatlinburg, TN 37738  
Phone: (423) 436-5860  
E-mail: [www.arrowmnt@aol.com](mailto:www.arrowmnt@aol.com)  
Web site: [www.arrowmont.org](http://www.arrowmont.org)  
**DIRECTOR**—Sandra Blain, Arizona Beta

## Holt House

- 402 East 1st Avenue, Monmouth, IL 61462  
(309) 734-3988  
**HOSSTESS**—Jane Mears Warfield, Illinois Alpha  
**HOURS**—By appointment only.

## Fraternity Insurance Representatives

- PROPERTY AND LIABILITY INSURANCE**—M-J Insurance, Inc., Sorority Department, PO Box 50435, Indianapolis, IN 46250  
**MEDICAL INSURANCE**—Coverdell & Company, 2622 Piedmont Road NE, Atlanta, GA 30324  
(800) 787-8711

## Pi Beta Phi Foundation Board of Trustees

- PRESIDENT**—Betty Blades Lofron, Indiana Gamma, 9060 Pickwick Drive, Indianapolis, IN 46260  
**VICE PRESIDENT**—Elizabeth Davenport Garels, Iowa Alpha, 2257 235th Street, Mount Pleasant, IA 52641  
**SECRETARY**—Carol Inge Warren, North Carolina Beta, 5439 Cascade Drive, Lisle, IL 60532  
**TREASURER**—Ann Warmack Brookshire, Texas Beta, 508 Woodland Hills Drive, Tyler, TX 75701  
Beth van Maanen Beatty, Texas Gamma, 1506 San Sebastian Lane, Nassau Bay, TX 77058  
Lois Huston Ross, Indiana Delta, 322 Spirea Drive, Dayton, OH 45419

## Foundation Committees

### ALUMNAE CONTINUING EDUCATION SCHOLARSHIP COMMITTEE

- CHAIRMAN**—Marion Swanson Oster, California Zeta, 38 Flood Circle, Atherton, CA 94027  
Carrie-Mae MacNair Blount, Maryland Alpha, 7712 Pickard NE, Albuquerque, NM 87110  
Patricia Wolfe Davis, Wisconsin Alpha, 6947 North Gleneagles Place, Tucson, AZ 85718

### EMMA HARPER TURNER FUND COMMITTEE

- CHAIRMAN**—Marga Larson Bales, Virginia Gamma, 60 Island Bay Court, Penhook, VA 24137  
Barbara Varner Frizzell, Kansas Alpha, 2609 Heather Parkway, Hutchinson, KS 67502  
Sally Sewell Wightman, Oklahoma Alpha, 524 N. Longford Lane, Wichita, KS 67206

### GRADUATE FELLOWSHIP COMMITTEE

- CHAIRMAN**—Elizabeth Jordan Holman, Arizona Alpha, 9225 North 53 Place, Paradise Valley, AZ 85253  
Kristy Lynn Weber, Missouri Alpha, 4819 Saxon, Bellaire, TX 77401  
Wendy Chioji, Indiana Beta, 1021 Lincoln Circle, Winter Park, FL 32789

### UNDERGRADUATE SCHOLARSHIP COMMITTEE

- CHAIRMAN**—Sally Roney Hoglund, Kansas Alpha, 3729 Normandy, Dallas, TX 75205  
Marcella Murray Derrick, Oklahoma Beta, 4123 Christacy Way, Marietta, GA 30066  
Marion Dobbins Griscom, Tennessee Alpha, 6609 Weatherford Court, McLean, VA 22101

## Pi Beta Phi Foundation Office

- 7730 Carondelet, Suite 333, St. Louis, MO 63105  
Phone: (314) 727-7338  
FAX: (314) 727-1255  
E-mail: [fnfn@piphico.org](mailto:fnfn@piphico.org)  
Web site: [pibetaphi.org/foundation.htm](http://pibetaphi.org/foundation.htm)  
**DIRECTOR**—Lynn M. Raney, CFRE, Pi Beta Phi Foundation, 7730 Carondelet, Suite 333, St. Louis, MO 63105

For additional information visit Pi Phi's Web site:  
[www.pibetaphi.org](http://www.pibetaphi.org).



**Collegiate Province Presidents**

- ALPHA**—Margaret E. Mulkern, Massachusetts Beta, 11A Ambassador Drive, Manchester, CT 06040
- BETA**—MaryMargaret McDonough, Maryland Beta, 217 Prospect Avenue #12A-2C, Cranford, NJ 07016
- GAMMA**—Lori Poveromo Haight, Virginia Eta, 12 Longstreet Road, Weldon, NC 27890
- DELTA**—Karen Neely Faryniak, Pennsylvania Gamma, 12 Joseph Drive, Boiling Springs, PA 17007
- EPSILON**—Dorothy Helfenstein, Virginia Zeta, 4428 North 17th Street, Arlington, VA 22207
- ZETA**—Karen Shelton Chevalier, California Delta, 8509 Browning Court, Annandale, VA 22003
- ETA**—Jennifer Plagman-Galvin, Iowa Gamma, 9511-2B Willow Ridge Road, Charlotte, NC 28210
- THETA**—Carey Kimball David, Louisiana Beta, 165 22nd Street North, Tuscaloosa, AL 35406
- IOTA**—Renee McDonald Hill, Arkansas Alpha, 4535 Nancy Ward Lane, Niceville, FL 32578
- KAPPA**—Karen Anne Gunther, Ohio Epsilon, 4318 Grantley Road, Toledo, OH 43613
- LAMBDA I**—Katherine Handel Harris, Ohio Alpha, 94 Chadbourne Drive, Hudson, OH 44236
- LAMBDA II**—Rae Wohlhueter Maier, Kentucky Beta, 1840 Beacon Hill, Ft Wright, KY 41011
- MU**—Barbara McReynolds LaMaster, Kentucky Beta, 3602 Locust Circle West, Prospect, KY 40059
- NU**—Eileen O'Neil Grigutis, Kentucky Beta, N77-W7089 Oak Street, Cedarburg, WI 53012
- XI**—Judith Pigg Mullinix, Kentucky Beta, 4876 Brentridge Court, Greenwood, IN 46143
- OMICRON**—Laura Judd Fulton, Illinois Theta, 31 Walnut Circle, Aurora, IL 60506
- PI**—Heather Keele Hicks, Alabama Beta, 318 Marlboro Avenue, Chattanooga, TN 37411
- RHO**—Stephanie Johnson Pither, California Gamma, 4122 North Ashland Avenue #2, Chicago, IL 60613
- SIGMA**—Kimberly Ann Barger, Oregon Alpha, 2100 Heatherwood Drive #B2, Lawrence, KS 66047
- TAU**—Pamela Keefe Langseth, Minnesota Alpha, 2094 NW 137th Street, Clive, IA 50325
- UPSILON**—Barbara Bittner Hakkio, Tennessee Alpha, 3700 Madison Avenue, Kansas City, MO 64111
- PHI**—Sarah Ware Hoch, Oklahoma Alpha, 1708 Drakestone, Oklahoma City, OK 73120
- CHI**—Lyn Arnot Clark, Texas Alpha, 3 Chaparral, Breckenridge, TX 76424
- PSI**—Cheryl Ruvolo Orr, Colorado Gamma, 10667 Goosehaven Drive, Lafayette, CO 80026
- OMEGA**—Jimmie Lane Huebner, New Mexico Beta, 7605 East Sabino Vista Drive, Tucson, AZ 85750
- ALPHA-BETA**—Michael Marie Bettin, Utah Alpha, 630 South Elizabeth Street, Salt Lake City, UT 84102
- ALPHA-GAMMA**—Vicki Sinkunas Mendenhall, Washington Alpha, 15920 41st Avenue NE, Seattle, WA 98155
- ALPHA-DELTA**—Julie Ann Jacobson, Washington Gamma, 3936 Granbury Drive, Dallas, TX 75287
- ALPHA-EPSILON**—Darlene Daum-Papano, Ohio Beta, 11 E Altarinda Drive, Orinda, CA 94563
- ALPHA-ZETA**—Jennifer Gapsin Yguico, Texas Beta, 3823 Royal Woods Drive, Sherman Oaks, CA 91403
- ALPHA-ETA**—Diane M. Bielman, California Eta, 623 Terrace Circle, Huntington Beach, CA 92648

**Collegiate Chapters by State**

*Each chapter is followed by the name of the university and the Pi Phi province in which the chapter is located. Chapter addresses are listed in the Summer ARROW. Contact Central Office for additional information.*

**ALABAMA**

Alabama Alpha, Birmingham-Southern College, Theta  
Alabama Beta, University of Alabama, Theta  
Alabama Gamma, Auburn University, Theta

**ARIZONA**

Arizona Alpha, University of Arizona, Omega  
Arizona Beta, Arizona State University, Omega  
Arizona Gamma, Northern Arizona University, Omega

**ARKANSAS**

Arkansas Alpha, University of Arkansas, Upsilon  
Arkansas Beta, University of Arkansas-Little Rock, Upsilon

**CALIFORNIA**

California Alpha, Stanford University, Alpha-Epsilon  
California Beta, University of California, Berkeley,  
Alpha-Epsilon  
California Gamma, University of Southern California,  
Alpha-Zeta  
California Delta, University of California, Los Angeles,  
Alpha-Zeta  
California Epsilon, San Diego State University,  
Alpha-Eta  
California Zeta, University of California, Santa Barbara,  
Alpha-Zeta  
California Eta, University of California, Irvine,  
Alpha-Eta  
California Theta, University of California, Davis,  
Alpha-Epsilon  
California Iota, California State University, Chico,  
Alpha-Epsilon  
California Kappa, University of California, San Diego,  
Alpha-Eta  
California Lambda, University of California, Riverside,  
Alpha-Eta  
California Mu, Pepperdine University, Alpha-Zeta

**COLORADO**

Colorado Alpha, University of Colorado, Psi  
Colorado Gamma, Colorado State University, Psi  
Colorado Delta, Colorado School of Mines, Psi

**CONNECTICUT**

Connecticut Alpha, University of Connecticut, Alpha  
Connecticut Beta, Yale University, Alpha

**FLORIDA**

Florida Alpha, Stetson University, Iota  
Florida Beta, Florida State University, Iota  
Florida Delta, University of Florida, Iota  
Florida Epsilon, University of Central Florida, Iota

**GEORGIA**

Georgia Alpha, University of Georgia, Theta

**IDAHO**

Idaho Alpha, University of Idaho, Alpha-Gamma

**ILLINOIS**

Illinois Alpha, Monmouth College, Omicron  
Illinois Beta-Delta, Knox College, Omicron  
Illinois Epsilon, Northwestern University, Nu  
Illinois Zeta, University of Illinois, Nu  
Illinois Eta, Millikin University, Omicron  
Illinois Theta, Bradley University, Omicron  
Illinois Iota, Illinois State University, Omicron

**INDIANA**

Indiana Alpha, Franklin College, Xi  
Indiana Beta, Indiana University, Xi  
Indiana Gamma, Butler University, Xi  
Indiana Delta, Purdue University, Nu  
Indiana Epsilon, DePauw University, Xi  
Indiana Zeta, Ball State University, Xi  
Indiana Eta, Indiana/Purdue University-Fort Wayne, Nu  
Indiana Theta, Valparaiso University, Nu

**IOWA**

Iowa Alpha, Iowa Wesleyan University, Tau  
Iowa Beta, Simpson College, Tau  
Iowa Gamma, Iowa State University, Tau  
Iowa Zeta, University of Iowa, Tau  
Iowa Eta, Drake University, Tau

**KANSAS**

Kansas Alpha, University of Kansas, Sigma  
Kansas Beta, Kansas State University, Sigma

**KENTUCKY**

Kentucky Alpha, University of Louisville, Mu  
Kentucky Beta, University of Kentucky, Mu  
Kentucky Gamma, Eastern Kentucky University, Mu

**LOUISIANA**

Louisiana Alpha, Tulane University-Newcomb College, Pi  
Louisiana Beta, Louisiana State University, Pi

**MAINE**

Maine Alpha, University of Maine, Alpha

**MICHIGAN**

Michigan Alpha, Hillsdale College, Kappa  
Michigan Beta, University of Michigan, Kappa  
Michigan Gamma, Michigan State University, Kappa  
Michigan Epsilon, Western Michigan University, Kappa

**MINNESOTA**

Minnesota Alpha, University of Minnesota, Rho

**MISSISSIPPI**

Mississippi Alpha, University of Southern Mississippi, Pi  
Mississippi Beta, University of Mississippi, Pi

**MISSOURI**

Missouri Alpha, University of Missouri, Upsilon  
Missouri Beta, Washington University, Upsilon  
Missouri Gamma, Drury College, Upsilon

**MONTANA**

Montana Alpha, Montana State University, Alpha-Beta

**NEBRASKA**

Nebraska Beta, University of Nebraska, Sigma  
Nebraska Gamma, Creighton University, Sigma

**NEVADA**

Nevada Alpha, University of Nevada, Alpha-Delta



# Fraternity Directory

## NEW JERSEY

New Jersey Alpha, Princeton University, Gamma

## NEW MEXICO

New Mexico Alpha, University of New Mexico, Omega  
New Mexico Beta, New Mexico State University, Omega

## NEW YORK

New York Alpha, Syracuse University, Beta  
New York Delta, Cornell University, Beta  
New York Epsilon, Rensselaer Polytechnic Institute, Alpha

## NORTH CAROLINA

North Carolina Alpha, University of North Carolina, Eta  
North Carolina Beta, Duke University, Eta  
North Carolina Gamma, Wake Forest, Eta

## NORTH DAKOTA

North Dakota Alpha, University of North Dakota, Rho

## OHIO

Ohio Alpha, Ohio University, Lambda I  
Ohio Beta, Ohio State University, Lambda I  
Ohio Epsilon, University of Toledo, Lambda II  
Ohio Zeta, Miami University, Lambda II  
Ohio Eta, Denison University, Lambda I  
Ohio Theta, Bowling Green State University, Lambda II  
Ohio Iota, University of Dayton, Lambda II

## OKLAHOMA

Oklahoma Alpha, University of Oklahoma, Phi  
Oklahoma Beta, Oklahoma State University, Phi

## OREGON

Oregon Alpha, University of Oregon, Alpha-Delta  
Oregon Beta, Oregon State University, Alpha-Delta  
Oregon Gamma, Willamette University, Alpha-Delta

## PENNSYLVANIA

Pennsylvania Beta, Bucknell University, Delta  
Pennsylvania Gamma, Dickinson College, Delta  
Pennsylvania Epsilon, Pennsylvania State University, Delta  
Pennsylvania Zeta, Washington & Jefferson College, Delta  
Pennsylvania Eta, Lafayette College, Gamma  
Pennsylvania Theta, Villanova University, Gamma  
Pennsylvania Iota, University of Pennsylvania, Gamma  
Pennsylvania Kappa, Lehigh University, Gamma

## SOUTH DAKOTA

South Dakota Alpha, University of South Dakota, Sigma

## TENNESSEE

Tennessee Beta, Vanderbilt University, Mu  
Tennessee Gamma, University of Tennessee, Mu  
Tennessee Delta, University of Memphis, Pi

## TEXAS

Texas Alpha, University of Texas, Chi  
Texas Beta, Southern Methodist University, Chi  
Texas Gamma, Texas Tech University, Phi  
Texas Delta, Texas Christian University, Chi  
Texas Epsilon, University of North Texas, Phi  
Texas Zeta, Baylor University, Chi  
Texas Eta, Texas A & M University, Chi

## UTAH

Utah Alpha, University of Utah, Alpha-Beta

## VERMONT

Vermont Beta, University of Vermont, Alpha

## VIRGINIA

Virginia Gamma, College of William & Mary, Zeta  
Virginia Delta, Old Dominion University, Zeta  
Virginia Epsilon, University of Virginia, Epsilon  
Virginia Zeta, Virginia Polytechnic Institute and State University, Epsilon  
Virginia Eta, University of Richmond, Zeta  
Virginia Theta, Washington & Lee University, Epsilon

## WASHINGTON

Washington Alpha, University of Washington, Alpha-Gamma  
Washington Beta, Washington State University, Alpha-Gamma  
Washington Gamma, University of Puget Sound, Alpha-Gamma

## WEST VIRGINIA

West Virginia Alpha, West Virginia University, Epsilon

## WISCONSIN

Wisconsin Alpha, University of Wisconsin, Rho  
Wisconsin Delta, Marquette University, Rho

## WYOMING

Wyoming Alpha, University of Wyoming, Psi

## CANADA

Alberta Alpha, University of Alberta, Alpha-Beta  
Ontario Alpha, University of Toronto, Beta  
Ontario Beta, University of Western Ontario, Beta  
Ontario Gamma, University of Guelph, Beta

## Alumnae Province Presidents

**ALPHA**—Hannah Fallon Burke, Connecticut Alpha, 12 Whispering Rod Road, Farmington, CT 06032  
**BETA**—Nancy Ellen Ashbrooke, Minnesota Alpha, 117 Beekman Street #6D, New York, NY 10038  
**GAMMA**—Catherine Scanga Ribaud, Pennsylvania Zeta, 11800 Dewey Road, Silver Spring, MD 20906  
**DELTA**—Mary Stuart Smith, Pennsylvania Gamma, 5004 Oakcrest Drive, Fairfax, VA 22030  
**EPSILON**—Caroline Crowley Wilkerson, Virginia Zeta, 7029 Spandril Lane, Charlotte, NC 28215  
**ZETA**—Cynthia Stringfield Provencher, Florida Beta, 2900 North Westmoreland Drive, Orlando, FL 32804  
**ETA**—Charlene Foster Copeland, Virginia Gamma, 561 Sterling Street NE, Palm Bay, FL 32907  
**THETA**—Julie Talley Hooton, Michigan Alpha, 2383 Bevington Road, Rochester Hills, MI 48309  
**IOTA**—Nancy Crull, Michigan Alpha, 4037 White Chapel Lane, Loveland, OH 45140  
**KAPPA**—Lora Ruble Bohannon, Georgia Alpha, 4920 Oakmont Bend Drive, Alpharetta, GA 30004  
**LAMBDA**—Lisa Lahman Carmin, Indiana Gamma, 100 Hampton Court, Bloomington, IN 47408  
**MU**—Glenda Mika Dailey, Illinois Iota, 135 Arlington Avenue, Elmhurst, IL 60126  
**NU**—Cheryl Raber Patterson, Illinois Theta, 501 South Main Street, Morton, IL 61550  
**XI**—Elizabeth Ann Ellison, Louisiana Beta, 451 Rena Drive, Lafayette, LA 70503  
**OMICRON**—Patricia Rudy Fleet, Indiana Delta, 6419 Timber Ridge, Edina, MN 55439  
**PI**—Mary Kiewer Hughey, Oklahoma Beta, 404 Martin Drive North, Bellevue, NE 68005

**RHO**—Barbara Lee Fay, Illinois Beta-Delta, 5500 West 85th Terrace, Overland Park, KS 66207

**SIGMA**—Jane Porter Warmack, Iowa Gamma, #8 Northern Hills Place, Texarkana, AR 71854

**TAU**—Colette Denney Buxton, Oklahoma Beta, 1442 NW 36th Street, Oklahoma City, OK 73118

**UPSILON**—Margaret Wright Laidlaw, California Gamma, 5708 Archer Court, Dallas, TX 75252

**PHI**—Madalyn Marchman Jones, Arkansas Alpha, 16622 Manningtree Lane, Spring, TX 77379

**CHI**—Maria Alberico Morgan, Utah Alpha, 32 Silverhorn Drive, San Antonio, TX 78216

**PSI**—Sidney Cottle Nelson, Colorado Gamma, 2369 South Holland Court, Lakewood, CO 80227

**OMEGA**—Luellen Clymo Smith, Washington Gamma, 12917 205th Court SE, Issaquah, WA 98027

**ALPHA-BETA**—Mari Lou Psihogios Diamond, Oregon Alpha, 17821 Marylcreek Drive, Lake Oswego, OR 97034

**ALPHA-GAMMA**—Patricia Getto Plumlee, Kansas Alpha, 10384 Melissa Court, Cupertino, CA 95014

**ALPHA-DELTA**—Catherine Birch Daniel, California Eta, 811 Orange Grove Avenue, South Pasadena, CA 91030

**ALPHA-EPSILON**—Celaine Bartow Derickson, Arizona Alpha, 7156 North Lemmon Rock Place, Tucson, AZ 85718

## Alumnae Groups by State

Each alumnae group is followed by the Pi Phi province in which the alumnae group is located. Contact Central Office for additional information.

### ALABAMA

Birmingham, Kappa  
Birmingham Night Group, Kappa  
Eastern Shore Alabama, Xi  
Huntsville, Kappa  
Mobile, Xi  
Montgomery, Kappa  
Thomasville Pocket, Kappa  
Tuscaloosa, Kappa

### ALASKA

Anchorage, Omega

### ARIZONA

Catalina Mountain Pocket, Alpha-Epsilon  
Green Valley Carnation Circle, Alpha-Epsilon  
Phoenix, Alpha-Epsilon  
Prescott Pocket, Alpha-Epsilon  
Sun Lakes Carnation Circle, Alpha-Epsilon  
Tucson, Alpha-Epsilon

### ARKANSAS

Conway, Sigma  
Eastern Arkansas Pocket, Sigma  
Forrest City, Sigma  
Fort Smith, Sigma  
Hot Springs, Sigma  
Little Rock, Sigma  
Northwest Arkansas, Sigma  
Texarkana, Sigma



# Fraternity Directory

## CALIFORNIA

Bakersfield, Alpha-Delta  
 Central Orange County, Alpha-Delta  
 Central San Joaquin Valley, Alpha-Gamma  
 Conejo Valley, Alpha-Delta  
 Contra Costa, Alpha-Gamma  
 Del Sol North, Alpha-Epsilon  
 Glendale, Alpha-Delta  
 La Canada, Alpha-Delta  
 La Jolla, Alpha-Epsilon  
 Long Beach, Alpha-Delta  
 Los Angeles-Santa Monica, Alpha-Delta  
 Marin County, Alpha-Gamma  
 Monterey Peninsula, Alpha-Gamma  
 North San Diego, Alpha-Epsilon  
 Palm Springs-Desert Cities, Alpha-Epsilon  
 Palo Alto, Alpha-Gamma  
 Pasadena, Alpha-Delta  
 Pasadena Evening, Alpha-Delta  
 Riverside, Alpha-Epsilon  
 Sacramento, Alpha-Gamma  
 San Diego, Alpha-Epsilon  
 San Fernando Valley, Alpha-Delta  
 San Francisco, Alpha-Gamma  
 San Jose, Alpha-Gamma  
 San Mateo County, Alpha-Gamma  
 South Bay, Alpha-Delta  
 South Coast, Alpha-Delta  
 South Coast Evening Group, Alpha-Delta  
 South Orange County, Alpha-Delta  
 Stanislaus County, Alpha-Gamma  
 Valley of the Moon, Alpha-Gamma  
 Ventura County, Alpha-Delta  
 Whittier Area, Alpha-Delta

## COLORADO

Aurora, Psi  
 Boulder, Psi  
 Colorado Rocky Mountain, Psi  
 Colorado Springs, Psi  
 Denver, Psi  
 Estes Park Pocket, Psi  
 Evergreen, Psi  
 Fort Collins, Psi  
 Grand Junction Pocket, Psi  
 Highlands Ranch, Psi  
 Jefferson County, Psi  
 Loveland Pocket, Psi  
 Northern Colorado, Psi  
 Pueblo, Psi  
 Southern Douglas County, Psi

## CONNECTICUT

Hartford, Alpha  
 Manchester Area, Alpha  
 New Haven, Alpha  
 Southern Fairfield County, Alpha

## D.C.

Nation's Capitol-D.C., Delta  
 Washington, D.C., Delta

## FLORIDA

Boca Raton, Eta  
 Brevard County, Zeta  
 Charlotte County Pocket, Eta  
 Clearwater, Eta  
 Daytona Area, Zeta  
 DeLand, Zeta  
 Imperial Polk County, Zeta  
 Jacksonville, Zeta  
 Naples, Eta  
 Ocala, Zeta

Orlando-Winter Park, Zeta  
 Palm Beach County, Eta  
 Pensacola, Xi  
 Sarasota-Manatee, Eta  
 Southwest Florida, Eta  
 St. Petersburg, Eta  
 Stuart Area, Eta  
 Tallahassee, Zeta  
 Tampa, Eta

## GEORGIA

Atlanta, Epsilon  
 Augusta, Epsilon

## HAWAII

Honolulu, Alpha-Epsilon

## IDAHO

Boise, Alpha-Beta  
 Idaho Falls Pocket, Alpha-Beta  
 Moscow, Alpha-Beta

## ILLINOIS

Alton-Edwardsville, Nu  
 Arlington Heights, Mu  
 Avon-Bushnell-Macomb, Nu  
 Belleville Area, Nu  
 Bloomington-Normal, Nu  
 Champaign-Urbana, Nu  
 Chicago South Suburban, Mu  
 Chicago West Suburban, Mu  
 Chicago Windy City, Mu  
 Decatur, Nu  
 DuPage County, Mu  
 Fox River Valley, Mu  
 Galesburg, Nu  
 Glen Ellyn-Wheaton, Mu  
 Hinsdale, Mu  
 Lake County, Mu  
 Lake Shore, Mu  
 Monmouth, Nu  
 Naperville Area, Mu  
 North Shore Camarion Circle, Mu  
 Oak Park-River Forest, Mu  
 Peoria, Nu  
 Quad Cities, Pi  
 Rockford, Omicron  
 Southern Illinois, Nu  
 Springfield, Nu

## INDIANA

Bloomington, Lambda  
 Fort Wayne, Lambda  
 Franklin, Lambda  
 Indianapolis, Lambda  
 Indianapolis-South Suburban, Lambda  
 Lafayette, Lambda  
 Michiana, Lambda  
 Muncie, Lambda  
 Richmond, Lambda  
 Southeastern Indiana, Lambda  
 Southlake, Lambda  
 Valparaiso, Lambda

## IOWA

Ames, Pi  
 Cedar Rapids, Pi  
 Des Moines, Pi  
 Indianola, Pi  
 Iowa City, Pi  
 Mt. Pleasant, Pi  
 Quad Cities, Pi

## KANSAS

Hays Pocket, Rho  
 Hutchinson, Rho  
 Kansas City, Rho  
 Kansas City-Shawnee Mission, Rho  
 Kansas City-Shawnee Mission, Evening, Rho  
 Lawrence, Rho  
 Manhattan, Rho  
 Topeka, Rho  
 Wichita, Rho

## KENTUCKY

Lexington, Kappa  
 Louisville, Kappa  
 Owensboro Pocket, Kappa

## LOUISIANA

Alexandria, Xi  
 Baton Rouge, Xi  
 Lafayette, Xi  
 Lake Charles, Xi  
 Louisiana Northshore, Xi  
 Monroe, Xi  
 New Orleans, Xi  
 Shreveport, Xi  
 Slidell, Xi

## MAINE

Eastern Maine, Alpha

## MARYLAND

Baltimore, Delta  
 Central Maryland, Delta  
 Chesapeake, Delta  
 Maryland-D.C. Suburban, Delta

## MASSACHUSETTS

Berkshire County, Alpha  
 Boston City, Alpha  
 Bostonian, Alpha  
 Cape Cod Camarion Circle, Alpha  
 Greater Springfield, Alpha

## MICHIGAN

Ann Arbor, Theta  
 Bloomfield Hills, Theta  
 Detroit West Suburban, Theta  
 Grand Rapids, Theta  
 Michiana, Lambda  
 North Woodward, Theta  
 Southwest Michigan, Theta  
 Traverse Bay Area, Theta

## MINNESOTA

Minneapolis, Omicron  
 South Suburban Minneapolis/St. Paul, Omicron  
 St. Paul, Omicron

## MISSISSIPPI

Hattiesburg, Xi  
 Jackson, Xi  
 Meridian, Xi  
 Mississippi Gulf Coast, Xi  
 Tupelo Pocket, Sigma

## MISSOURI

Columbia, Rho  
 Jefferson City Pocket, Rho  
 Kansas City-Shawnee Mission, Rho  
 Kansas City-Shawnee Mission, Evening, Rho  
 St. Joseph, Rho  
 St. Louis, Rho  
 Springfield, Rho



# Fraternity Directory

## MONTANA

Bozeman, Alpha-Beta

## NEBRASKA

Hastings Pocket, Pi  
Lincoln, Pi  
Omaha, Pi

## NEVADA

Las Vegas, Alpha-Epsilon  
Reno, Alpha-Gamma

## NEW JERSEY

Bergen County, Beta  
Greater Princeton Area, Beta  
Hoboken Area, Beta  
Jersey Shore, Beta  
Northern New Jersey, Beta  
Southern New Jersey, Beta

## NEW MEXICO

Albuquerque, Chi  
Las Cruces, Chi  
Roswell, Chi  
Santa Fe, Chi

## NEW YORK

Buffalo, Beta  
Long Island-North Shore, Beta  
New York City-Manhattan, Beta  
Rochester, Beta  
Schenectady, Alpha  
Syracuse, Beta  
Westchester County, Beta

## NORTH CAROLINA

Charlotte, Epsilon  
Durham-Orange County, Epsilon  
Greater Raleigh, Epsilon  
Lake Norman, Epsilon  
Sandhills of North Carolina Carnation Circle,  
Epsilon  
Western North Carolina Pocket, Epsilon  
Winston Salem, Epsilon

## OHIO

Akron, Iota  
Athens, Iota  
Canton, Iota  
Cincinnati, Iota  
Cleveland East, Iota  
Cleveland West, Iota  
Columbus, Iota  
Dayton, Iota  
Toledo, Theta  
Western Reserve, Iota  
Wheeling, Gamma

## OKLAHOMA

Ada Pocket, Tau  
Ardmore, Tau  
Bartlesville, Tau  
Duncan, Tau  
Edmond, Tau  
Enid, Tau  
Kay County-Ponca City, Tau  
Lawton-Fort Sill, Tau  
Midwest City Pocket, Tau  
Muskogee, Tau  
Norman, Tau  
Oklahoma City, Tau  
Pauls Valley Pocket, Tau  
Sapulpa Pocket, Tau  
Stillwater, Tau  
Tulsa, Tau

## OREGON

Corvallis, Alpha-Beta  
Eugene, Alpha-Beta  
Lake Oswego-Dunthorpe, Alpha-Beta  
Portland, Alpha-Beta  
Salem, Alpha-Beta

## PENNSYLVANIA

Central Pennsylvania Pocket, Gamma  
Harrisburg-Carlisle, Gamma  
Philadelphia-Main Line, Gamma  
Pittsburgh-North, Gamma  
Pittsburgh-South Hills, Gamma

## RHODE ISLAND

Rhode Island, Alpha

## SOUTH CAROLINA

Columbia, Epsilon  
Greater Charleston Area, Epsilon  
Greenville, Epsilon  
Hilton Head Island, Epsilon

## TENNESSEE

Chattanooga, Kappa  
Knoxville, Kappa  
Memphis, Sigma  
Nashville, Kappa

## TEXAS

Abilene, Chi  
Amarillo, Chi  
Arlington, Upsilon  
Austin, Chi  
Bay Area, Phi  
Beaumont, Phi  
Brazos Valley, Phi  
Breckenridge Pocket, Chi  
Conroe-The Woodlands, Phi  
Corpus Christi, Phi  
Cypress Creek-Northwest Houston, Phi  
Dallas, Upsilon  
Dallas Junior Day Group, Upsilon  
Dallas Junior Night Group, Upsilon  
Denton, Upsilon  
East Fort Bend County, Phi  
East Texas Pocket, Upsilon  
El Paso, Chi  
Fort Worth, Upsilon  
Graham Pocket, Chi  
Harlingen-Brownsville, Phi  
Hidalgo County Pocket, Phi  
Hill Country, Chi  
Houston, Phi  
Houston Junior Night Group, Phi  
Katy, Phi  
Kingwood Area Pocket, Phi  
Lubbock, Chi  
Lufkin Pocket, Upsilon  
Marshall Pocket, Upsilon  
Metrocrest, Upsilon  
Mid-Cities, Upsilon  
Midland, Chi  
Northeast Texas Pocket, Upsilon  
Pampa Pocket, Chi  
Richardson-Plano, Upsilon  
San Angelo, Chi  
San Antonio, Chi  
Sherman-Denison Pocket, Upsilon  
Southwest Dallas County Pocket, Upsilon  
Temple Pocket, Upsilon  
Texarkana, Sigma  
Tyler, Upsilon

Victoria, Phi  
Waco, Upsilon  
Wichita Falls, Chi

## UTAH

Salt Lake City, Alpha-Beta

## VERMONT

Vermont, Alpha

## VIRGINIA

Charlottesville, Delta  
Fredericksburg Area Pocket, Delta  
Northern Virginia, Delta  
Potomac Falls, Delta  
Richmond, Delta  
Roanoke Valley, Delta  
Tidewater of Virginia, Delta

## WASHINGTON

Bellevue-Eastside, Omega  
Olympia, Omega  
Seattle, Omega  
Skagit-Camano Pocket, Omega  
Southwest Washington Pocket, Omega  
Spokane, Omega  
Tacoma, Omega  
Upper Olympic Peninsula Pocket, Omega  
Wenatchee, Omega  
Yakima, Omega

## WEST VIRGINIA

Charleston, Gamma  
Clarksburg, Gamma  
Morgantown, Gamma  
Wheeling, Gamma

## WISCONSIN

Beloit Pocket, Omicron  
Madison, Omicron  
Milwaukee, Omicron

## WYOMING

Casper, Psi  
Cheyenne, Psi  
Laramie, Psi

## FOREIGN

London, England Pocket, Alpha  
Mexico City, Mexico Pocket, Chi  
Paris, France Pocket, Alpha  
Tokyo, Japan Pocket, Alpha-Gamma

## CANADA

Calgary, Alberta, Alpha-Beta  
Edmonton, Alberta, Alpha-Beta  
Vancouver, British Columbia, Omega  
Winnipeg Area, Manitoba, Omicron  
Toronto, Ontario, Beta



# News from Arrowmont

by Caroline Malone



The fifth-grade class from Pi Beta Phi Elementary School stand in front of the finished Intervale Tile Mural Project—a gift presented to the Fraternity in appreciation for the recent renovation of the Red Barn Dormitory.

## Children's Mural Preserves Red Barn Memories

Recently, fifth graders from Pi Phi Elementary School gathered to learn the history of Arrowmont and work on a collaborative project. The Intervale Tile Mural Project was created as a thank you to the Fraternity for funding the renovation of the Red Barn.

A Pi Beta Phi art teacher, Donna Walker, joined Arrowmont Bookstore manager and artist Karen Byars to develop and manage the project. The children watched a video

**Fifth grade students at Pi Beta Phi Elementary School work diligently to produce their designs onto tiles for the mural project.**



about Arrowmont's rich history and from this information, designed the colorful and whimsical tile mural collage, which depicts scenes from Arrowmont's past. Students transferred the designs onto tiles and painted and fired them in a kiln. The project was assembled and was unveiled in the newly restored barn during Pi Phi Arts Weekend.

The mural was inspired by the value of the role the Settlement School played in forming the educational development of the area.

## Contributions Received

June 1, 1998 to May 31, 1999

### Top Ten Clubs

|  |          |
|--|----------|
| 1. Nashville, Tennessee                              | \$50,900 |
| 2. Kansas City, Missouri-<br>Shawnee Mission, Kansas | \$5,000  |
| 3. St. Louis, Missouri                               | \$5,000  |
| 4. Houston, Texas                                    | \$3,520  |
| 5. Dallas, Texas                                     | \$2,425  |
| 6. Wichita, Kansas                                   | \$2,000  |
| 7. Pasadena, California                              | \$1,400  |
| 8. Philadelphia-Main Line,<br>Pennsylvania           | \$1,000  |
| 9. South Bay, California                             | \$1,000  |
| 10. Oklahoma City, Oklahoma                          | \$750    |

### Top Ten Chapters

|                   |         |
|-------------------|---------|
| 1. Georgia Alpha  | \$4,500 |
| 2. Florida Beta   | \$4,403 |
| 3. Texas Alpha    | \$4,000 |
| 4. Illinois Theta | \$3,500 |
| 5. Alabama Gamma  | \$3,300 |
| 6. Illinois Zeta  | \$3,250 |
| 7. Indiana Delta  | \$3,228 |
| 8. Texas Delta    | \$3,000 |
| 9. Indiana Zeta   | \$2,600 |
| 10. Texas Zeta    | \$2,500 |

## Your Link to Arrowmont

Want to know more about Arrowmont? Just surf over to our Web site at [www.arrowmont.org](http://www.arrowmont.org). Keep watching for new and exciting Web site changes. Our new Web site coordinator will showcase Arrowmont in creative ways and will offer extensive information about the school. Click on the site and take a grand tour of the campus. You can also e-mail us at [www.arrowmnt@aol.com](mailto:www.arrowmnt@aol.com).



Find out about Arrowmont events and class schedules at [www.arrowmont.org](http://www.arrowmont.org). Keep in touch via e-mail at [arrowmnt@aol.com](mailto:arrowmnt@aol.com).

# News from Arrowmont

[www.arrowmont.org](http://www.arrowmont.org)



Pi Phi members learn the art of basket weaving during a course at Pi Phi Arts Weekend.

## Pi Phi Arts Weekend

If you have ever wanted to expand your horizons and try a new craft or explore an art form, then make the new millennium the year to do something fun and exciting for yourself by attending Pi Phi Arts Weekend.

Join fellow Pi Phi members who gather at Arrowmont School in Gatlinburg each May. The dates for Pi Phi Arts Weekend 2000 are May 4–7. This past May, more than 70 Pi Phi were reunited for the weekend including several mothers and daughters who used this opportunity to learn together at this creative retreat.

"I thoroughly enjoyed the experience—wondered why I had not learned of it or participated in it sooner. What a great place for a chapter reunion to meet old and new Pi Phi sisters," says Ohio Alpha Bonnie Trinka Dimsdale.

You do not have to be an accomplished artist to attend. Many beginners are joined by accomplished artists and work side by side, learning from each other. The exchange among students is vast, and all students are guaranteed to

leave Arrowmont with a powerful feeling of accomplishment.

"To leave televisions and telephones behind, to abandon the day-timer, to arrive at the filling station with an empty tank and depart full of super premium; that's Pi Phi Arts Weekend," says South Carolina Alpha Brenda Williams Hellams. "Thanks for the opportunity to listen to my soul and to feed my spirit. I am returning home full of energy and optimism."

Sign up today for one of the following classes taught by these women who are experts in their field. Class size is limited so register early to guarantee your spot.

- Quilted Wearables—Jimmie Benedict
- Wood turning—Carol Brt
- Craft History—Barbara Crawford
- Watercolor—Lynn Sanders
- Marbling—Laura Sims
- Calligraphy—Joyce Teta
- Baskets—Lee Zimmerman

For registration information and a brochure call Arrowmont at (423) 436-5860 or e-mail your request to [www.arrowmnt@aol.com](mailto:www.arrowmnt@aol.com).

## Calendar of Events September–November

• **Elderhostel Classes**  
*Craft workshops especially for those individuals 55 and over. For more information please contact: Elderhostel, 75 Federal Street, Boston, MA 02110-1941, or e-mail at [www.elderhostel.org](http://www.elderhostel.org).*

September 6–11, 13–18, 20–24 and  
October 17–23, 24–30, 1999

• **All Things Considered Basketry Exhibition**

*Shown in conjunction with the Tradition & Innovation: Basketry Today Conference in October. Co-sponsored by Arrowmont and the Handweaver's Guild of America.*

August 20–October 10, 1999

• **National Basketry Conference**  
October 6–10, 1999

• **Arrowmont Permanent Collection**  
*A mixed-media exhibition of Arrowmont's vast permanent collection.*

October 15–November 27, 1999

Arrowmont galleries are open year-round to the public, Monday–Saturday, 8:30 a.m.–4:30 p.m. For more information contact Arrowmont at (423) 436-5860 or visit the Web site at [www.arrowmont.org](http://www.arrowmont.org).





# Foundation

## St. Louis Alumnae Establish Largest Scholarship in Pi Phi History

Several years ago, the St. Louis, Missouri Alumnae Club and its philanthropic project, the Sign of the Arrow shop, made a generous commitment to the Pi Beta Phi Foundation by establishing a permanently endowed scholarship. The club and the shop have continued to make additional gifts that have increased the permanent endowment principal.

The alumnae were inspired to create this scholarship to honor the memory of Missouri Beta Melissa Gail Aptman, a collegian at Washington University, who was tragically killed just weeks before her graduation in 1995. Melissa aspired to help people and was a committed community volunteer. With this in mind, the donors requested that the scholarship criteria include community service.

Since 1997, the Foundation has awarded Melissa Gail Aptman Undergraduate Scholarships of \$1,000 each to deserving collegians who have demonstrated a commitment to community service. Beginning in 2001, this scholarship, as it is currently established, will cease to exist.

The St. Louis Alumnae Club and Sign of the Arrow have made a commitment to increase the principal of this endowment so that an undergraduate scholarship of up to \$10,000 may be awarded to one outstanding collegian every academic year. This is the largest such award known among any of the



**Sign of the Arrow Philanthropy Chairman Virginia Epsilon Eleanor Danforth Ivie, former Philanthropy Chairman Missouri Alpha Sarah Murray Capiello, Chairman of the Sign of the Arrow Missouri Alpha Mary Rogers Gordon and former Chairman of the Sign of the Arrow Indiana Epsilon Susan Melberg Davis in front of the Sign of the Arrow shop in St. Louis, Missouri.**

Greek organizations. This commitment will put Pi Phi at the "top of the list" among its Greek counterparts—both men's and women's organizations.

The exceptional generosity of the St. Louis alumnae in establishing this new scholarship is unprecedented in Pi Beta Phi history. The scholarship, titled the Sign of the Arrow Melissa Scholarship, will be awarded for the 2001–2002 academic year. The application deadline for the first Sign of the Arrow Melissa Scholarship will be January 31, 2001, and the recipient will be presented with her award at the 2001 Convention in Denver.

Qualifications include being a senior in college and having an outstanding record of community service as well as a minimum 3.1 GPA. Collegians are encouraged to begin reviewing their resumes now and considering what they can do to volunteer in their local communities.

Missouri Alpha Mary Rogers Gordon, Chairman of the Sign of the Arrow, expressed the local alumnae's interest in encouraging community service among students. "It is our hope that this scholarship will recognize, encourage and reward community service," she says. This is in line with the general mission of the shop, which is staffed primarily by volunteers. Every year, the shop's proceeds are donated to local St. Louis agencies as well as to the Pi Beta Phi Foundation.

Through the Sign of the Arrow Melissa Scholarship, the St. Louis Alumnae Club can now have an impact on community service in the 133 communities in which Pi Phi has chapters.

The Pi Beta Phi Foundation is grateful to the women of St. Louis for this commitment to the Foundation and for the commitment to encourage community service. This gift will benefit Pi Phi collegians, but, in the end, it will have a very positive impact on our society as a whole.



# Rush Information Form (RIF)

To be used by Pi Beta Phi alumnae only

- This form may be copied.
- Include a picture of prospective rushee if possible.
- Send this form directly to the Chapter Membership Chairman (CMC) or process through your Alumnae Club Rush Information Chairman, if rushee is from the same area. For addresses of CMCs, consult the 1999 Summer issue of The ARROW, or contact Central Office. **Do not** send this form to Central Office.
- RIF forms can be printed from Pi Beta Phi's Web site at [www.pibetaphi.org/rif.htm](http://www.pibetaphi.org/rif.htm).

Name of Rushee \_\_\_\_\_ Attending \_\_\_\_\_ College \_\_\_\_\_

Home Address \_\_\_\_\_  
Street City State Zip

Year in College:  Freshman  Sophomore  Junior  Senior

If transfer student: College attended \_\_\_\_\_ College GPA \_\_\_\_\_

High School attended \_\_\_\_\_  
Name City State Zip

Class Size \_\_\_\_\_ Rank \_\_\_\_\_ GPA \_\_\_\_\_ SAT/ACT (if known) \_\_\_\_\_

Parent or Guardian \_\_\_\_\_

Pi Beta Phi Relatives \_\_\_\_\_  
(sister, mother, grandmother)

Other Greek Affiliated Relatives \_\_\_\_\_

Please check ONE of the following:

- Wish to highly recommend  Wish to recommend

Please check ONE of the following:

- Known personally by an alumna (if so, how long?) \_\_\_\_\_
- Only factual information included. Source of information \_\_\_\_\_
- Other \_\_\_\_\_

Signed \_\_\_\_\_  
Individual Pi Beta Phi Alumna

Address \_\_\_\_\_  
Street City State Zip

Telephone \_\_\_\_\_ Date \_\_\_\_\_  
Area Code Number

LIST SCHOOL AND COMMUNITY ACTIVITIES AND HONORS: (Attach another sheet if needed.)  
Comment on special interests, talents, leadership qualities, personality.



# Collegiate News

At the University of California Santa Barbara's Greek awards night, **CALIFORNIA ZETAS** received an award for outstanding community involvement as well as an award for most improved GPA. Chapter President Jennifer Bills received the president of the year award.

For their outstanding participation during Greek Week, **NEW MEXICO ALPHAS** at the University of New Mexico received first-place awards for Greek games, Greek unity, campus involvement and participation, and the Greek Week basket contest, for which members filled a basket with toiletries for a local domestic violence shelter. Meredith Ford was chosen as the Greek woman of the year.

During the University of California, Berkeley's Chancellors' Committee on University Greek Relations banquet, **CALIFORNIA BETAS** received the award for excellence in alumnae relations programming. Anna Paine, Taylor Gibson and Kari Williams were selected to serve as 1999-2000 BEARS (Berkeley Educates on Alcohol Responsibility Seminars) educators. The university selected Kirsten Jensen as a Phi Beta Kappa member.

**TENNESSEE GAMMAS** at the University of Tennessee, Knoxville won first place in the race for the Volunteer Challenge Cup and placed first in Alpha Gamma Rho's tag-football tournament.

**KENTUCKY ALPHAS** at the University of Louisville helped Phi Kappa Tau raise \$5,000 during its philanthropy week. Angela Massey was named Greek goddess 1999 during the university's Greek Week.

At Texas Tech University, **TEXAS GAMMA** Jamie Johnston was named outstanding sophomore, ReBecca Wright received the Callie Chalk Award for her outstanding service and activities and Christy Andrews was named the 1999 Greek woman of the year and received the Dr. Michael Shonrock Visionary Leader Scholarship.

**NEW MEXICO BETAS** placed second overall in the 1999 New Mexico State University Greek Week activities. The all-Greek council gave an award for the highest new-member class GPA to the chapter's fall 1998 new-member class. A member of this class, Amy Barnhart, received the award for the highest individual new-member GPA.

At Texas Christian University's annual Greek Order of Omega awards banquet, **TEXAS DELTA** Elizabeth Gipson was named the outstanding Greek sophomore woman of the year and the chapter's alumna adviser, Oklahoma Alpha Carol Clark Hove, was named the outstanding alumni of the year.

**VIRGINIA ZETA** Clara Abraham was crowned homecoming queen at Virginia Polytechnic Institute and State University. Abbie Connoy and Erin Giebel were appointed to the campus panhellenic, and Bonnie Williams was selected as an orientation leader for the incoming campus freshman.

Teamed with Alpha Kappa Lambda, **IDAHO ALPHAS** won the University of Idaho's Greek Week competition. Kacie Baldwin was selected as one of the university's outstanding seniors, and Monica Murgoitio was selected as one of the university's outstanding juniors.

For her dedication to **NORTH CAROLINA BETA**, Duke University's panhellenic council named Erin Stege an outstanding sister. Sandra Johnston, captain of the Duke women's lacrosse team, led the team to the Final Four in the NCAA Tournament. Thirteen North Carolina Betas are lacrosse team members.

**CALIFORNIA THETA** at the University of California, Davis was the women's chapter with the highest GPA on campus. Members also won first place in the intersorority flag football tournament. Amber Southern received the 1999 Panhellenic sister of the year award for her hard work and dedication as the 1998 Vice President of Panhellenic and Greek Conduct Board co-chairman. Tiffany Bunney founded an agricultural economics club, and Erin Dial served as Greek Week co-chairman.

At Montana State University's annual Greek banquet, **MONTANA ALPHAS** received the 1998 international spirit award and the historian award. New members achieved the best GPA for a new-member class. The chapter was also recognized for outstanding community service, campus involvement, social programming, and excellence in university and interfraternal relations.

**TEXAS ALPHAS**, along with Sigma Alpha Mu members, raised \$18,000 to benefit the American Cancer Society. The Texas Alphas also won first place in the Greek Week olympics and third place in the Greek Week canned-food drive, in which members helped collect more than 400 pounds of food for the Austin Capitol Area food bank.





**OREGON ALPHAS** were awarded the University of Oregon's Brown Barden Cup for best overall GPA for the 1998-99 academic year. The chapter also received the Laurel Award for best financial programming. Julie Coombe was named the outstanding junior woman of the year. Amanda Connor was elected special accounts chairman for the Associated Students of the University of Oregon, and Jennifer Raven is Order of Omega's new president.

**CONNECTICUT BETA** Kimberly Sargent is a member of Yale University's elite senior women's singing group, Whim 'n Rhythm. This group performs at university functions and off-campus events, will record a CD, and will end the year with a summer world tour.

**OHIO BETAS** took first place in Ohio State University's Greek Week variety show. During the university's Greek awards night, Jaime Zarlenga was named outstanding new member, Reena Oza received the Conaway-Chase Outstanding Senior award, and the chapter received the award for most improved GPA.

**CALIFORNIA DELTA** Annie Baghrumian was named captain of the University of California, Los Angeles women's swim team and the team's most valuable diver. Joelle Cosentino was selected to be part of UCLA's dance team, and Melanie Pearl was named Greek woman of the year.

**KENTUCKY GAMMAS** achieved the highest women's GPA on Eastern Kentucky University's campus. They received awards for their community service and overall scholarship during Greek Weekend. Leslie Covington was named Greek woman of the year.



**TEXAS EPSILONS** at the University of North Texas won best song show and best community service during Greek Week. During the annual Greek awards banquet, Michelle Corbitt was named outstanding Greek woman and Dena Long was named president of the year.

Five **SOUTH DAKOTA ALPHAS** were tapped into Mortar Board at the University of South Dakota. Jaime Kuper was one of only 12 members tapped into Omicron Delta Kappa. Lori Malde competed in the Miss USD Scholarship Pageant, where she placed first in congeniality and talent, and then won the overall title of Miss USD.

When Sarah Bradshaw won the outstanding Greek woman of the year, she became the third, consecutive **ARKANSAS ALPHA** to win this award at the University of Arkansas. Four chapter members were tapped into Mortar Board, and Rebecca Brooksher played the lead role in the university's musical production "The Mystery of Edwin Drood."

**KANSAS ALPHAS** Kati Crouse, Katherine Wells, Allison Early, Denise Bollier and Elizabeth Stinson received the Emily Nelson Award for Natural Ties. This award is given each year at the University of Kansas for outstanding community service.

**NEBRASKA GAMMA** Dawn Imada was presented the Spirit of Creighton award, considered the highest award a graduate can receive at Creighton University. The award is given to one man and one woman who lead lives in support of both Creighton's mission and motto.



**ABOVE LEFT: During their annual Pie Social, California Lambdas at the University of California, Riverside raised more than \$900, which they donated to Arrowmont.**

**ABOVE CENTER: At the University of Memphis' all-Greek awards ceremony, Tennessee Deltas received the intramural champions of the year award based on their winning performance in flag football, soccer, basketball and softball. The chapter also won the Sigma Kappa Sisterhood award. Penny Weldon was named the intramural woman of the year.**

**ABOVE: The Zanta Women's Club of Laramie, Wyoming awarded its literacy award to the Wyoming Alphas at the University of Wyoming. During the university's Greek achievement awards presentation, Heather Rath received the individual community service award and Theresa Nakao was named the Greek female athlete of the year. Ashley Sprecher, Erin Arnold, Amanda Penner and Kyla Carmin each won outstanding academic achievement awards.**

The **CALIFORNIA MU** Chapter achieved the highest cumulative GPA of all Pepperdine University's sororities and fraternities. Kathy Hua-Di was crowned homecoming queen. At the university's annual Greek awards night, Corey Gustelius won rush chairman of the year, California Mu alumna Lisa LaFrenz was named the adviser of the year, and Sandi Aston Colner was named Greek woman of the year.



# Collegiate News

**WEST VIRGINIA ALPHA** Wendy Ridenour was selected as the student chairman for the university's new student orientation program. Also working on the program are Charlene Lett and Jessikah Wiese.

**MISSOURI GAMMAS** at Drury College received several awards including: Kelly Richardson, the Breech School of Business Administration Management Award; Jonna Dyer, the Outstanding Freshman in Chemistry; Emily Albrecht, the Outstanding Student in Public Relations; and Kara Short, the Frank W. Clippenger Award for the outstanding student in English. Emily Albrecht, Kara Short and Shelly Stulce, were Leadership Drury award recipients.

**COLORADO GAMMAS** at Colorado State University won 10 awards during Greek Night Out, including the highest GPA on campus for women's Greek organizations, three intramural championships and first place in Panhellenic participation.

**FLORIDA EPSILON** Cara Cernick was named Order of Omega's secretary. The University of Central Florida's Panhellenic named Stefani Nelson Greek Week chairman.

At Stanford University, **CALIFORNIA ALPHA** Katrina Abuabara was accepted into Phi Beta Kappa, and Jenny Abramson was named a 1999 Rhodes Scholar. Taira Hall was chosen for a Stanford in Government Summer Fellowship in Washington D.C., where she worked in Congress on health-care reform.



During her softball career at Simpson College, **IOWA BETA** Kelly Schade set or tied seven NCAA Division III records including career wins, career strikeouts, career shutouts, career games, most wins in a season, most strikeouts in a season and most shutouts in a season. In May, Kelly won the 1998-99 Honda Awards Program Division III Athlete of the Year award. Honda will give \$5,000 in Kelly's honor to the women's athletics program at Simpson.

Kelly led the Simpson Storm to the 1997 and 1999 NCAA Division III national titles, and she was named to the national championship all-tournament team four years in a row. For three years in a row, Kelly was named National Fast-pitch Coaches Association (NFCA) first team all-American, Iowa Conference MVP and NFCA first team all-region. Kelly currently holds every Simpson season and career pitching record.

While she was busy with softball, Kelly served Iowa Beta as Chapter Treasurer and held a high GPA in economics. She has recently signed with the Virginia Roadsters, a team in the Women's Pro Softball League.

At the University of Mississippi, **MISSISSIPPI BETA** Laura Hargraves received the campus Who's Who award; Abigail Bowen was chosen as an orientation leader; Beth Davenport and Amanda Brister were chosen as rush counselors; and Lisa Compton, Ashley McClinton and Allison Neubauer were chosen for GEARs (Greeks Educating About Responsibility).

At the University of Richmond, **VIRGINIA ETA** was awarded the outstanding community service award. Sarah Barnes was named the outstanding Greek chapter officer and Cindy Venturini was given the Unsung Hero award, an award given to a Greek woman who is not on an executive council, but is active in her chapter, school and community.

**OKLAHOMA BETA** Misty Ambrose was named one of the top ten seniors at Oklahoma State University, and was also named the university's top senior woman. The chapter placed first in softball and football intramurals. Both of these wins led them to be named second in overall intramurals at Oklahoma State.

**OHIO ZETA** Elizabeth Kirsch was named Miami University's outstanding chapter president. The chapter received the Warren Nelson Memorial Community Service Award and several academic achievement certificates.



**Amy Burnham Onken**

Originally presented in 1935, this award is named for Amy Burnham Onken, Grand President from 1921 to 1952. The award recognizes outstanding participation and leadership by a senior. Winners are selected based on scholarship, service to the Fraternity and participation in student activities.



**KATHERINE IVERS**  
Connecticut Beta  
Yale University  
Alpha Province



**ANNE-MARIE ANDERSON**  
New York Alpha  
Syracuse University  
Beta Province



**ANGELA SCHENCK**  
Pennsylvania Epsilon  
Pennsylvania State University  
Delta Province



**HILARY DARILEK**  
Virginia Gamma  
College of William & Mary  
Zeta Province



**REBECCA HARBOUR  
PARTESOTTI**  
Alabama Beta  
University of Alabama  
Theta Province



**MICHELLE ANDERSON**  
Michigan Alpha  
Hillsdale College  
Kappa Province



**REENA OZA**  
Ohio Beta  
Ohio State University  
Lambda I Province



**JESSICA POPIEL**  
Ohio Epsilon  
University of Toledo  
Lambda II Province



**JENNIFER MENDILLO**  
Tennessee Beta  
Vanderbilt University  
Mu Province



**CARRIE KLOCKOW**  
Indiana Delta  
Purdue University  
Nu Province



**CHRISTINE WILSON**  
Indiana Zeta  
Ball State University  
Xi Province



**JILL JOZWIAK**  
Illinois Iota  
Illinois State University  
Omicron Province



**KATHRYN HICKS**  
Tennessee Delta  
University of Memphis  
Pi Province



**CYNTHI PARKER**  
Minnesota Alpha  
University of Minnesota  
Rho Province



**KARA SLAUGHTER**  
Nebraska Beta  
University of Nebraska  
Sigma Province



**AMY ROBERTSON**  
Iowa Gamma  
Iowa State University  
Tau Province



**SARAH JANE BRADSHAW**  
Arkansas Alpha  
University of Arkansas  
Upsilon Province



**CHRISTY ANDREWS**  
Texas Gamma  
Texas Tech University  
Phi Province





**SUSAN TURNER**  
Texas Beta  
Southern Methodist  
University  
Chi Province



**MELISSA YOUNG**  
Colorado Gamma  
Colorado State University  
Psi Province



**KELLY GRAHAM**  
New Mexico Beta  
New Mexico State  
University  
Omega Province



**ANN VARANAKIS**  
Utah Alpha  
University of Utah  
Alpha-Beta Province



**KACIE BALDWIN**  
Idaho Alpha  
University of Idaho  
Alpha-Gamma Province



**JENNIFER ISLEY**  
Oregon Gamma  
Willamette University  
Alpha-Delta Province



**LINDSEY MERCER**  
California Beta  
University of California,  
Berkeley  
Alpha-Epsilon Province



**HEATHER PUTNAM**  
California Gamma  
University of Southern  
California  
Alpha-Zeta Province



**JILL WAGONER**  
California Lambda  
University of California,  
Riverside  
Alpha-Eta Province

**NOT PICTURED:**

**ALICIA MIDDLETON**  
North Carolina Alpha  
University of North Carolina  
Eta Province

**VERONICA VUCHO EVANS**  
Florida Alpha  
Stetson University  
Iota Province

**Chapter Service**

*The Chapter Service Award recognizes individuals for outstanding leadership in the chapter, responsibility, dependability, initiative, and contribution to the chapter's spirit and chapter unity. The award has been given since 1956.*



**STACIA FJELLMAN**  
New York Epsilon  
Rensselaer Polytechnic  
Institute  
Alpha Province



**MONICA DIAZ**  
Ontario Alpha  
University of Toronto  
Beta Province



**JILL ZURAMSKI**  
Pennsylvania Epsilon  
Pennsylvania State  
University  
Delta Province



**SARAH YOSELEVSKY**  
Virginia Gamma  
College of William & Mary  
Zeta Province



**MICHELLE MCBREARITY**  
North Carolina Gamma  
Wake Forest University  
Eta Province



**LAUREN MENGEL**  
Georgia Alpha  
University of Georgia  
Theta Province



**TABITHA LETOURNEAU**  
Florida Delta  
University of Florida  
Iota Province



**TANYA SZYMLIC**  
Ohio Alpha  
Ohio University  
Lambda I Province





**ELIZABETH KIRSCH**  
Ohio Zeta  
Miami University  
Lambda II Province



**RENEE NEACE**  
Kentucky Gamma  
Eastern Kentucky University  
Mu Province



**JENNIFER GIBSON-DECKARD**  
Indiana Eta  
Indiana-Purdue University,  
Fort Wayne  
Nu Province



**LISA MORRIS**  
Indiana Gamma  
Butler University  
Xi Province



**KRISTIN EBERS WOLTER**  
Illinois Eta  
Millikin University  
Omicron Province



**JENNIFER WILSON**  
Tennessee Delta  
University of Memphis  
Pi Province



**MEGAN STROH**  
North Dakota Alpha  
University of North Dakota  
Rho Province



**LINZI OLIVER**  
Kansas Alpha  
University of Kansas  
Sigma Province



**STEPHANIE BEANE**  
Iowa Gamma  
Iowa State University  
Tau Province



**STEPHANIE PETTIT**  
Missouri Alpha  
University of Missouri  
Upsilon Province



**EMILY HEWITT**  
Oklahoma Alpha  
University of Oklahoma  
Phi Province



**BRENNA BOYD**  
Texas Alpha  
University of Texas  
Chi Province



**MARTHA TEDROW**  
New Mexico Alpha  
University of New Mexico  
Omega Province



**MILA GAUB**  
Montana Alpha  
Montana State University  
Alpha-Beta Province



**JAIME CREA**  
Idaho Alpha  
University of Idaho  
Alpha-Gamma Province



**TIFFANY McMACKEN**  
Nevada Alpha  
University of Nevada  
Alpha-Delta Province



**HEATHER PATTERSON**  
California Theta  
University of California,  
Davis  
Alpha-Epsilon Province



**KRISTI DETLEFSEN**  
California Mu  
Pepperdine University  
Alpha-Zeta Province



**ANNE MARIE HENDRICKSON**  
California Kappa  
University of California,  
San Diego  
Alpha-Eta Province

**NOT PICTURED:**

**DIANA GRAVEL**  
Michigan Gamma  
Michigan State University  
Kappa Province

**LISA BROWN**  
Colorado Delta  
Colorado School of Mines  
Psi Province



# Fraternity

## News & Notes

### Collegiate Connection

#### The Benefits of AAC Membership

"These women serve to remind us that Pi Beta Phi is something greater than our little chapter, for their friendship, compassion, dedication and pure love of Pi Phi are obvious to us always," wrote Chapter President Jenny Mendillo, in the Tennessee Beta nomination for the D.C. Alpha Award for Outstanding Alumnae Advisory Committee.

Pi Beta Phi membership affords us a wide spectrum of opportunities from our collegiate years through our alumnae years. One such opportunity is to serve as an AAC member. In this role, you give guidance and assistance to the chapter, the officers in particular. AACs provide the continuity that will send our chapters into the next century, stronger than ever. As an AAC member, you are a role model, a mentor and most of all a friend. You are a cheerleader for all the chapter members do well and you challenge them where they need to improve.

Giving back to Pi Phi as an alumna reinforces to today's college women the real meaning of membership as a lifetime commitment.

Choosing to make a difference within a collegiate chapter could also make a difference within your life. Be a part of the collegiate connection and find out why we are so "Pi Phi proud" of our collegians. Contact me at (815) 332-4496 and I will be delighted to put you in touch with one of our 133 chapters.

—Kristin Noer Olson  
Director of Alumnae Advisory Committees

### 1999 Fraternity Ornament



Christmas is just around the corner and the 1999 Fraternity Christmas ornament is available in Pi Phi Express.

This year's ornament commemorates Holt House where Pi Beta Phi was founded on April 28, 1867. In 1939 the Fraternity purchased and restored the structure to its original splendor. In 1941, Holt House opened for visitors. Now, the home is used for meetings and social events, and holds an extensive collection of books by Pi Phi authors.

This ornament is the sixth in a series of limited edition collectable ornaments. For more information or to place an order contact Pi Phi Express at (800) 322-1867.

38

### Northern Virginia Scholarship Offered

The Northern Virginia Alumnae Club is offering a \$1,000 scholarship to a dues-paying alumna for continuing education. The application deadline is February 1, 2000 and the recipient will be notified in April 2000. Contact Kim Perret at (703) 255-6447 for application information or check the club's Web site at [www.pibetaphi-nvac.org](http://www.pibetaphi-nvac.org).

### Chapter Anniversaries

**CONNECTICUT BETA** will be celebrating its 10th Anniversary at Yale University, October 15-17, 1999. If you have any questions, please contact Tiffany Wohlfeil at (203) 764-7290 [tiffany.wohlfeil@yale.edu](mailto:tiffany.wohlfeil@yale.edu).

**CALIFORNIA ZETA** will be celebrating its 50th Anniversary at the University of California, Santa Barbara, February 6-7, 2000. The theme for the event is "50 Years and Rising to the Top." For questions, please contact VP Moral Jillian Jacobs at (805) 968-0768 after October 1, 1999.

### No Stamp? No Problem

Get in touch with Pi Phi online.

**Pi Beta Phi Web site**

[www.pibetaphi.org](http://www.pibetaphi.org)

**Central Office e-mail**

[centraloffice@piphico.org](mailto:centraloffice@piphico.org)

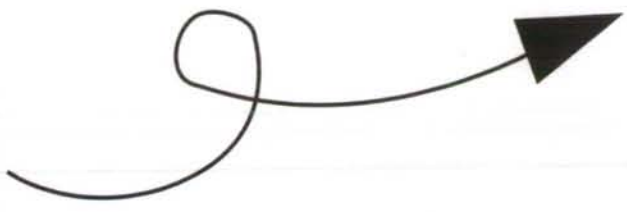
**The ARROW e-mail**

[thearrow@primary.net](mailto:thearrow@primary.net)

**Pi Beta Phi Foundation e-mail**

[fdn@piphico.org](mailto:fdn@piphico.org)





# Alumnae Dues

## Are you a Loyal Link?

Recently, more than 1,000 collegians and alumnae gathered in Houston, Texas for Pi Beta Phi's 62nd Biennial Convention. Thousands more logged on the official Fraternity Web site [www.pibetaphi.org](http://www.pibetaphi.org); sent e-mail to [centraloffice@piphico.org](mailto:centraloffice@piphico.org) in St. Louis; called Pi Phi Express (800) 322-1867 to order Fraternity merchandise; or signed up to receive the quarterly online newsletter Pi Phi Printings at [rbcantlie@aol.com](mailto:rbcantlie@aol.com). These are some of the many links to the future that our Fraternity provides. But the most important link is the involvement and financial support of alumnae like you. When you pay Fraternity alumnae dues, you become a Loyal Link and help ensure the continuation of benefits such as alumnae programming, the Directions program and new technology that keeps Pi Beta Phi competitive with its peers and accessible to its members.

Pi Beta Phi alumnae in a club area are given the opportunity to pay alumnae dues through their alumnae club. Alumnae who live in an area without an alumnae club were sent a dues notice inviting them to become a Loyal Link member. If you have already paid your alumnae dues for 1999-2000, thank you. If you have not yet taken the opportunity to send in your alumnae dues, you may do so by filling out the form below.

Become a Loyal Link and you will be supporting not only the fundamental objects of the Fraternity, but also the Fraternity's future.

As a Loyal Link you will receive:

- ◆ **PI BETA PHI ALUMNAE MEMBERSHIP CARD**
- ◆ **DIRECT LINK, ALUMNAE NEWSLETTER**
- ◆ **PI BETA PHI TIP CARD**

Name (first, maiden, last): \_\_\_\_\_

Address: \_\_\_\_\_

City: \_\_\_\_\_ State: \_\_\_\_\_ Zip: \_\_\_\_\_

Chapter & date of initiation: \_\_\_\_\_

Enclosed is my check for \$15 payable to Pi Beta Phi Fraternity, for alumnae dues.  
(Dues are not deductible for federal tax purposes.)

Send check, along with the completed form to:  
Pi Beta Phi Central Office,  
7730 Carondelet, Suite 333  
St. Louis, MO 63105

|                            |                 |
|----------------------------|-----------------|
| <b>For Office Use Only</b> | Ref No. _____   |
| Sales Code _____           | Check No. _____ |
| Province No. _____         | Amount _____    |



# Memoriam

Initiation year and month and year of death follow each member's name. When submitting death notices to Central Office, please give month and year of death.

Names cannot be listed without this information.

## Alabama Alpha

RUTH (DOLLY) WEISS NELSON, 1932; April 1999

## California Beta

JESSIE MCCLURE BORCHERT, 1935; March 1999  
NANCY CLAPHAM NOYES, 1945; May 1999

## D.C. Alpha

EDITH (DRUCIE) SNYDER HORTON, 1946;  
April 1999

## Florida Alpha

ELEANOR DOOLEY FRYE, 1946; April 1999  
JANE POWELL HILLS, 1939; April 1999  
HELEN BASS JUDGE, 1937; May 1999  
ELIZABETH SCARLETT ROGERS, 1931; April 1999

## Florida Beta

HILAH HINES COCHRANE, 1926; April 1999  
PAULINE PRENTISS HASS, 1929; April 1999  
PHYLLIS KOUWENHOVEN HOSKINS, 1929;  
April 1999

## Florida Gamma

JANE BARRY SCHUMACHER, 1942; April 1999

## Illinois Beta-Delta

GERIE KEATING NEELD, 1945; March 1999

## Illinois Epsilon

HAZEL DREISKE PAIDAR, 1923; May 1999

## Illinois Zeta

LOIS FULLER FOREMAN, 1940; May 1999  
MARGARET BARBER HIPPI, 1936; April 1999

## Illinois Theta

GENEVIEVE NEWLIN, 1948, affiliated Illinois Zeta;  
April 1999

## Indiana Beta

JUANITA SPORS VARNER, 1934; April 1999

## Indiana Gamma

MARY KIBLER LEAHY, 1937; August 1998

## Indiana Delta

SALLY CONNELL LOVE, 1949; April 1999

## Indiana Epsilon

ENID WOLF WHITE, 1947; April 1999

## Kansas Alpha

MARY GARDNER BAKER, 1927; December 1998  
SUZANNE HASKINS THOLEN, 1940; June 1998  
MARY BITZER WEEKES, 1940; May 1999

## Kentucky Alpha

BETTY ALLIO WIEDEBURG, 1949; April 1999

## Louisiana Beta

MARILYNN BORDELON GILLY, 1966; June 1998

## Manitoba Alpha

BARBARA DAY BOULT, 1941; July 1998  
AGNES MACDONALD, 1929; February 1999

## Maryland Alpha

JANET VOGEL PEARSON, 1947; April 1999

## Michigan Gamma

NICHOLE JAMIE DEHMEI, 1997; April 1999

## Michigan Delta

MARGARET YOUNG-CUYLER, 1959; April 1999

## Missouri Beta

ISABELLE ANDREWS HIGGINBOTHAM, 1938;  
May 1999  
ELIZABETH MORTON STEHLIN, 1924; March 1999

## Montana Alpha

CAROL NYLANDER SORENSON, 1935;  
December 1998

## Nebraska Beta

MARY MICKEY EDWARDS, 1933; February 1999

## New York Alpha

JO SULLIVAN CHAMBERLAIN, 1936; April 1999

## New York Gamma

SHIRLEY TAYLOR SCHWARZ, 1944; September 1998

## Ohio Alpha

ELEANOR JANE ABE BOWSHER, 1935; May 1999  
ALBERTA V. FRANKE, 1922; March 1999  
RUBY MERCER POR, 1941; January 1999

## Ohio Beta

FRANCES HAMILTON KABEL, 1933;  
November 1998

## Oklahoma Beta

MARY MCCOLLUM TOP CONYERS, 1932;  
April 1999

## Ontario Alpha

HELEN RUTHERFORD BUNTING, 1920; March 1999

## Pennsylvania Alpha

MARY E. BROSIUS, 1924; May 1999

## Pennsylvania Gamma

EMMATINE SHERK STAFFORD, 1933; February 1999

## South Dakota Alpha

PHYLLIS WELLS SMITH, 1947; May 1999

## Texas Alpha

EMILY MILLER WELLS, 1938; March 1999

## Texas Beta

DOROTHY WYATT STEPHENSON, 1933; April 1999

## Utah Alpha

JEANNETTE BERRETT DAVIS, 1930; May 1999

## Vermont Beta

FRANCES MCKEAN PIKE, 1929; March 1999

## Virginia Alpha

MARIAN TIMMINS KERR, 1931, affiliated  
Arkansas Alpha; March 1999

## Virginia Beta

ANNE F. JONES, 1929; March 1999

## West Virginia Alpha

ELIZABETH HOWARD DALE, 1933; April 1999

## Wisconsin Beta

CATHERINE YARNELLE MAXWELL, 1938; May 1999



# Links to Literacy



## Pi Phi and Literacy

Web surfing, cellular, snail mail, digital sound, laser surgery, online, literacy. In a 20th century communication catch phrase lineup, literacy doesn't seem to fit. However, without it, advanced communication is impossible. As technological growth continually broadens the definition of communication, our definition of literacy is broadened, as well. We, as Pi Phi, are not only teaching those around us to read words on a page, but we are helping individuals read the fast-changing environment around them. With this skill, those individuals can then impact their community through effective communication.

In the upcoming century, you can be an individual who promotes literacy in your community, in your home or on your campus. There are a variety of ways to teach others about literacy. Camilla Humphrey, Pi Beta Phi's Links to Literacy Committee Chairman hopes "all chapters and clubs have a literacy chairman who is already at work on her group's contribution in this field for the coming year." She encourages all Pi Beta Phi members to not "let the year slip by without addressing this important aspect of Pi Phi and being of service to improve literacy in each community."

Celebrate  
Pi Beta Phi's  
International  
Links to Literacy Week  
October 10-16, 1999.

## Be a Link to Literacy

*The following are just a few of the countless ways you and your alumnae club or chapter can be a link to literacy.*

- Write a poem, essay or short story for the annual Links to Literacy Writing Contest. The Links to Literacy Committee encourages those who are artists to also illustrate their work. This year's subject is "Literacy's Place in the New Millennium." The winner will be announced and her work published in the Spring 2000 *ARROW*. Entries should be sent to the Links to Literacy Chairman Camilla Humphrey by November 30, 1999.
- Celebrate Pi Beta Phi's International Links to Literacy Week. As a club or chapter officer, let this be a time to thoroughly inform and remind your alumnae club and chapter about the importance of literacy, and help begin a new literacy program for children or adults in your community.
- Donate books to a classroom of children. Personalize the books with a bookplate or note for each child. For the past two years, the Wichita, Kansas Alumnae Club has collaborated with Southwestern Bell to provide personalized books for the kindergarten classes at Stanley Elementary School in Wichita. The book titled "I Like Me," is written using each child as the main character, and his family, friends, principal and school in the plot. This year, alumnae club members read each child's book to him. One club member reports that "the delight in their faces as they read their names and those of their friends was more than enough reward."
- Use your teaching ability to implement new literacy programs in your community. Indiana Delta Jane Fell Greene is the Academic Dean at the National Institute for Continuing Education. She wrote "LANGUAGE!," a comprehensive literacy intervention curriculum used by teachers in all 50 states and in eight countries. Jane currently is the chairman of the National Council of "LANGUAGE!" trainers and oversees professional development courses across the nation. During the curriculum's pilot study, middle and high school students with reading delays averaged gains of more than three years during an average 22-week enrollment period. An article Jane wrote about this new curriculum was published in the Spring/Summer 1998 issue of *American Educator*.



# Directions



## Success Stories

The mentoring and networking program has been a blessing to me as I have recently relocated to San Diego from Chicago upon graduation. All I had was a college degree and not a whole lot of direction as to where to go for a job or even something as simple as a dentist.

Never before have I met such an inspiring group of Pi Phis as the alumnae that have submitted their names to

the Directions program. Immediately, the California Kappa Alumnae Advisory Committee Chairman, Kathleen Yetter, got me involved in working with the other alumnae on the committee. Within my first month in California, I was greeted by more than two dozen alumnae who were willing to help me find a job, even where to shop.

My smooth transition to living in Southern California is due completely to Pi Phi's mentoring and networking program and all the wonderful alumnae that have gone the extra mile to help another sister. Thank you for developing something as great as the Directions program. I hope that I can be as much help for another sister!

**ANGELA TOMASSETTI**  
**ILLINOIS IOTA**

I got involved in the Pi Beta Phi Directions Program because I was anticipating a move across the country from Jackson, Mississippi to Fort Collins, Colorado. I wanted to find information about many areas of Colorado and the job market. The Directions program helped me meet people.

Now, I live in Windsor, Colorado with my husband, Brad. I love the area and have met many Pi Phis who have helped me get involved in the community. I hope all Pi Phis will include their names in the Directions program and help new people in their area. I loved Pi Phi in college and I am glad I am still involved in my college sorority through an alumnae club.

**CANDACE MCKEY STRONG**  
**MISSISSIPPI BETA**

42

## Going Globe Trotting?

Did you know that Directions, Pi Phi's mentoring and networking program, is a GLOBAL program? More than 200 members outside the United States are ready to be mentors to Pi Phis traveling abroad. Wherever you're going in their country, these mentors are prepared to help you, as a visiting Pi Phi, acclimate to your new environment.

Where are you planning to study abroad? Where are you planning to move now that you've graduated? Are you relocating due to a new job? Pi Phi mentors are in countries such as Australia, Switzerland, Spain, France, England, Israel, Germany, Mexico, The Netherlands, Taiwan, Japan and the Republic of South Africa. They are ready and willing to answer any questions you have about your adventure. What are the most important items to bring? Where are the best places to stay while traveling around the coun-

try? Where do you get groceries? Where are the best sight-seeing spots that are off the beaten path? What is considered culturally polite when meeting new people? These are just a few of the questions you may have that a mentor can easily answer.

Remember! Overseas mentors will not provide long-term housing, food or transportation during your trip, but they are there to help you become accustomed to your new surroundings.

For more information about Pi Phi's overseas mentors, contact the Directions program at Central Office: (314) 727-7338 or [centraloffice@piphico.org](mailto:centraloffice@piphico.org).

Send us your story! If Directions helped you connect with a mentor in a foreign country, please let us know. Send your story to *The ARROW*, 7730 Carondelet, Suite 333, St. Louis, MO 63105, [thearrow@primary.net](mailto:thearrow@primary.net).



# Directions

Where friendships grow

*Pi Beta Phi's Mentoring & Networking Program*

Name: \_\_\_\_\_ Maiden Name: \_\_\_\_\_

Home Address: \_\_\_\_\_

City/State/Zip: \_\_\_\_\_

Phone: (home) \_\_\_\_\_ (work) \_\_\_\_\_

Fax: \_\_\_\_\_ e-mail: \_\_\_\_\_

Chapter: \_\_\_\_\_ Year of Initiation: \_\_\_\_\_

Check One and complete information below:

\_\_\_\_\_ I would like to help other Pi Phis. Please add my name, mentoring information and career cluster (if appropriate) to the program. I understand that this information may be released to any Pi Phi who requests the information.

\_\_\_\_\_ Help! I am entering or re-entering the job market, and/or moving to a new community. I would like some mentoring information from Pi Phi alumnae. Enclosed is my **\$5.00 check payable to Pi Beta Phi** for which I may request up to three locations.

CHECK APPROPRIATE MENTORING CATEGORY:

Career

City/Community Information

*(If career, complete occupational cluster information below.)*

City: \_\_\_\_\_ Closest metropolitan area: \_\_\_\_\_

Occupation Cluster(s): \_\_\_\_\_ (See listing below)

Occupation Title/Description: \_\_\_\_\_

OCCUPATION CLUSTERS

- |   |   |
|---|---|
| <b>A. Agriculture &amp; Environment</b><br>Conservation, Forestry, Horticulture, Landscaping, Recycling, Wildlife   | <b>J. Health &amp; Medicine</b><br>Dentistry, Nursing, Pharmacy, Physician, Psychology, Therapists, Veterinary, Dietitian, Optometry, Pathology, Dermatology, Sales, Consultant |
| <b>B. Architecture, Engineering &amp; Design</b><br>Drafting, Graphic and Interior Design, Surveyor, All Engineers, Architect                               | <b>K. Home Economics &amp; Family Consumer Science</b><br>Child and Daycare Service, Family Counseling, Food Marketing and Development, Homemaker                               |
| <b>C. Communications</b><br>Advertising, Broadcasting, Journalism, Media, Public Relations, Publishing, Reporting, Writing                                  | <b>L. Hospitality</b><br>Catering, Chef, Conventions, Food Services, Hotel, Restaurant  |
| <b>D. Computer &amp; Science</b><br>All Computer/Technical Support, Data Processing, All Scientists   | <b>M. Legal &amp; Law Enforcement</b><br>Attorney, Court Reporting, Judicial, Paralegal, Police   |
| <b>E. Construction &amp; Trades</b><br>Automotive, Electrical, Mechanical, Painting, Plumbing, Textile  | <b>N. Management &amp; Administration</b><br>Administrative Support, Clerical, Human Resources, Personnel, Public Relations, Company President                                  |
| <b>F. Cultural &amp; Arts</b><br>Crafts, Entertainment, Film, Museums, Music, Performing, Photography, Theater, Actress                                     | <b>O. Manufacturing</b><br>Equipment Maintenance, Factory Operation, Plant Management   |
| <b>G. Education &amp; Counseling</b><br>All Levels of Education, Employment Services, Librarian, Social Work, Administration, Counselor                     | <b>P. Recreation, Leisure &amp; Travel</b><br>Airlines, Fitness Sports, Tourism, Public Relations   |
| <b>H. Finance</b><br>Accounting, Banking, Consulting, Economist, Investments, Math, Statistics, Auditor   | <b>Q. Retail</b><br>Consumer, Design, Fashion, Merchandising, Manager   |
| <b>I. Government, Non-profit &amp; Religion</b><br>Military, Ministry, Public & Social Services, Volunteer, FBI, Legislative Aide, Fund-Raising, Translator | <b>R. Sales &amp; Marketing</b><br>Buyer, Import/Export, Insurance, Real Estate, Representative, Research, Wholesale, Telemarketing, Marketing, Manager, Sales                  |
|   | <b>S. Transportation &amp; Moving</b><br>Shipping & Freight, Trucking   |

Return to: Directions Program

Pi Beta Phi Central Office, 7730 Carondelet, Suite 333, St. Louis, MO 63105



Pi Phi EXPRESS



**A.** Polar fleece pullover. Charcoal, khaki, forest green. S, M, L  
**SW209 \$65.00**

**B.** Lightweight fleece pullover. Black, gray, red: M, L. Limited quantity available.  
**SW213 \$42.50**

**C.** Purple stow-away jacket with pouch. M, L, XL  
**SW214 \$29.00**

**D.** Black nylon anorak jacket. M, L, XL  
**SW215 \$35.00**

**E.** Striped nylon anorak jacket. Specify color. Hunter with navy: M, L, XL Navy with hunter: XL only. Limited quantity available.  
**SW156 \$40.00**

**F.** Navy nylon varsity jacket. M, L  
**SW212 \$40.00**

**G.** Arched hat, Greek back.  
**N362 Navy \$18.00**  
**N361 White \$18.00**

**H.** Khaki Greek hat.  
**N120 \$16.00**

**I.** Navy and hunter hat.  
**N121 \$18.00**

**J.** Khaki and thyme oval-design hat.  
**N110 \$16.00**

**K.** Hunter and khaki hat.  
**N122 \$18.00**

**L.** White bar-design hat.  
**N363 \$18.00**

**M.** Khaki and black oval-design hat.  
**N111 \$16.00**

**N.** Khaki fun-letter hat.  
**N114 \$16.00**

**O.** Chandler bear wearing sweater.  
**N101 \$39.50**

**P.** Ash gray jersey shorts. S, M, L, XL  
**SH138 \$25.00**

**Q.** Gray long-sleeve, star T-shirt. M, L, XL  
**T260 \$15.00**

**R.** White long-sleeve, star T-shirt. M, L, XL  
**T259 \$15.00**

**S.** 30 oz. arrow tumbler.  
**N324 \$2.50**

**T.** 16 oz. blue tumbler.  
**N416 \$1.00**

**U.** Flower pot.  
**N320 \$10.00**

**V.** Cappuccino mug.  
**N112 \$10.00**

**W.** 20 oz. bike bottle.  
**N412 \$3.50**

**X.** Burgundy alumna mug.  
**N347 \$4.00**

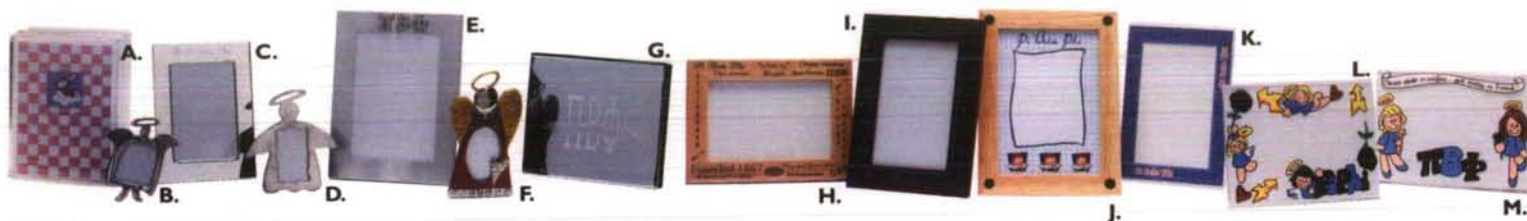
**Y.** Cobalt blue Greek mug.  
**N348 \$4.00**

**Z.** Stoneware angel mug.  
**N331 \$7.50**

**AA.** Wine insulated mug.  
**N123 \$6.50**



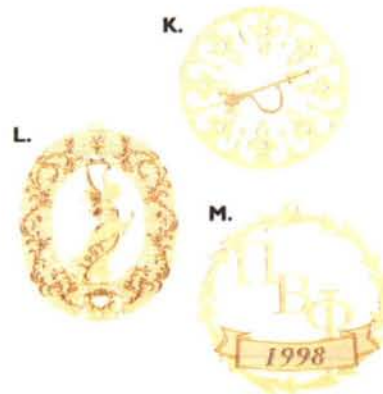




- A. Acrylic angel photo book.  
F111 \$14.00
- B. Flying angel frame. 2x2  
F136 \$14.00
- C. Silver engraved crest frame. 3x5  
F128 \$19.00
- D. Pewter angel frame. 2x3  
F127 \$19.00
- E. Silver satin Greek frame. 4x6  
F138 \$14.00
- F. Enamel angel frame. 2x3  
F135 \$14.00
- G. Silver photo album. 4x6  
F129 \$22.00
- H. Wooden collage frame. 4x6  
F133 \$27.50
- I. Burgundy wooden frame. 4x6  
F115 \$12.00
- J. Plaid wooden frame. 3x5  
F137 \$16.00
- K. Lucite squiggle mat frame. 4x6  
F110 \$5.50
- L. Lucite Pi Phi frame. 5x7  
F123 \$16.00
- M. Lucite sisters frame. 5x7  
F119 \$16.00
- N. Bookmark with arrow pin.  
J114 \$7.00
- O. Bookmark with angel pin.  
J121 \$7.00
- P. Arrow frame with poem.  
F113 \$14.00
- Q. Hand-painted ring holder  
(assorted shapes).  
N103 \$5.00
- R. Hand-painted trinket box  
(assorted shapes).  
N104 \$5.00
- S. Carnation notecards and pin. 4/pkg.  
S113 \$12.50
- T. Sisterhood poem with heart pin.  
J113 \$6.00
- U. Pi Phi poem with arrow pin.  
J112 \$6.00
- V. Pi Baby Phi toddler T-shirt. 2T  
T262 \$6.50
- W. Pi Baby Phi onesie. 6 mo.  
T261 \$11.00
- X. Pi Baby Phi bib.  
N368 \$5.00
- Y. Mom johnny-collar shirt. M, L  
T258 \$28.00
- Z. Dad polo-style shirt. L, XL  
T255 \$35.00
- AA. Husband polo-style shirt. L, XL  
T256 \$35.00
- BB. Charcoal oval-design sweatshirt.  
M, L  
SW266 \$42.50
- CC. Khaki Greek-embroidered  
sweatshirt. M, L  
SW217 \$42.50
- DD. Navy athletic crew sweatshirt.  
L, XL  
SW265 \$34.00
- EE. Ash gray oval-design sweatshirt.  
L, XL  
SW152 \$29.50







- A. Pewter Greek push-pin set. 6/pkg.  
N422 \$7.00
- B. Pewter Greek hair pins. 2/pkg.  
N424 \$5.00
- C. White baby-doll T-shirt. S, M, L.  
Limited quantity available.  
T128 \$14.00
- D. Ash-gray long-sleeve crest  
T-shirt. S, M, L. Limited quantity  
available.  
T250 \$20.00
- E. Navy ringer T-shirt. S, M, L  
T240 \$12.50
- F. Maroon ringer T-shirt. S, M, L  
T241 \$12.50
- G. Colorful collage tote.  
N414 \$18.00
- H. 1999 Convention denim tote.  
N423 \$18.00
- I. Golf towel.  
N116 \$16.00
- J. 1999 Holt House ornament.  
N411 \$12.00
- K. 1996 original badge ornament.  
N233 \$12.00
- L. 1997 angel ornament.  
N345 \$12.00
- M. 1998 Greek-letter ornament.  
N400 \$12.00

Name \_\_\_\_\_  
 Undergraduate     Alumna     Nonmember  
 Billing Address \* \_\_\_\_\_ Daytime Phone (\_\_\_\_) \_\_\_\_\_  
 City \_\_\_\_\_ State \_\_\_\_\_ Zip \_\_\_\_\_  
 Visa     MC # \_\_\_\_\_ Exp. date \_\_\_\_\_

| Item # | Description/Color | Size | Qty | Price | Total |
|--------|-------------------|------|-----|-------|-------|
|        |                   |      |     |       |       |
|        |                   |      |     |       |       |
|        |                   |      |     |       |       |
|        |                   |      |     |       |       |
|        |                   |      |     |       |       |
|        |                   |      |     |       |       |

|  |  |  |
|--|--|--|
| Postage & Handling Charges:<br>\$10.00 and under . . . \$3.50<br>\$10.01-\$25.00 . . . . \$5.50<br>\$25.01-\$50.00 . . . . \$6.50<br>\$50.01-\$75.00 . . . . \$7.50<br>\$75.01-\$100.00 . . . . \$8.50<br>\$100.01-\$150.00 . . . \$10.00<br>\$150.01-\$200.00 . . . \$11.50 | • Each additional \$100.00<br>add \$6.50.<br>• Canadian Orders<br>add an additional \$5.00.<br>• Call to ask about<br>special delivery pricing.<br>• Prices subject to change. | Subtotal<br>MO Residents<br>Add 7.225%<br>Postage & Handling<br>(see chart at left)<br>Total |
|--|--|--|

Make checks payable to: Pi Beta Phi. Canadian checks should be made payable in U.S. funds. Phone orders accepted 8 a.m.-5 p.m. CST, Monday-Friday. \*Billing address is required for all orders including credit card orders. If different shipping address is desired, please enclose a note. Send completed form and payment to: Pi Phi Express, 7730 Carondelet, Suite 333, St. Louis, MO 63105 or call (800) 322-1867. Profits from Pi Phi Express help support Fraternity programming.



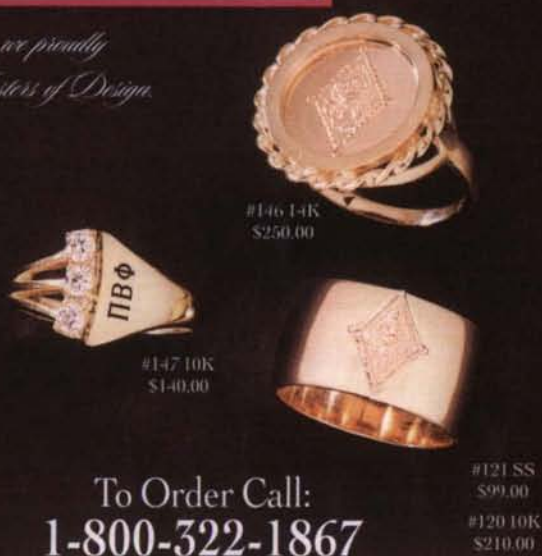


# Pi Beta Phi Jewelry

*Continuing our tradition of excellence, we proudly introduce our new line of jewelry from Masters of Design.*



**LEGACY**  
A Masters of Design Division  
Official Jeweler to Pi Beta Phi



To Order Call:  
**1-800-322-1867**

**PI BETA PHI JEWELRY**  
7730 Carondelet, Suite 333  
St. Louis, MO 63105  
(800) 322-1867  
[www.pibetaphi.org/purch.htm](http://www.pibetaphi.org/purch.htm)  
8:00-5:00 Central Standard Time, Monday-Friday

|   |  |  |           |
|---|--|--|-----------|
| NAME  |  |  |           |
| ADDRESS   |  |  |           |
| CITY/STATE  |  |  | ZIP       |
| DAYTIME PHONE   |  |  |           |
| SIGNATURE   |  |  |           |
| VISA <input type="checkbox"/> MC <input type="checkbox"/> # |  |  | Exp. Date |

| Qty | Description of Item | Size | Cost/Each | Total |
|-----|---------------------|------|-----------|-------|
|     |                     |      |           |       |
|     |                     |      |           |       |
|     |                     |      |           |       |
|     |                     |      |           |       |
|     |                     |      |           |       |
|     |                     |      |           |       |
|     |                     |      |           |       |
|     |                     |      |           |       |
|     |                     |      |           |       |
|     |                     |      |           |       |

Postage & Handling Charges:

|                   |         |
|-------------------|---------|
| \$10.00 and under | \$3.50  |
| \$10.01-\$25.00   | \$5.50  |
| \$25.01-\$50.00   | \$6.50  |
| \$50.01-\$75.00   | \$7.50  |
| \$75.01-\$100.00  | \$8.50  |
| \$100.01-\$150.00 | \$10.00 |
| \$150.01-\$200.00 | \$11.50 |

|                                    |  |
|------------------------------------|--|
| <b>Merchandise Total</b>           |  |
| <b>MO Residents Add 7.225% Tax</b> |  |
| <b>Shipping (See chart)</b>        |  |
| <b>TOTAL AMOUNT</b>                |  |



## Alumnae are you ready?

It's time to start thinking about Regional Leadership Retreats. This year's theme is "Links for a Lifetime." Join other alumnae in your province to share ideas, network and work on officer training in a relaxed, small group environment. There will be 12 retreats held throughout the United States. For more information, contact your Alumnae Province President or Central Office.

### Spring 2000 Regional Leadership Retreat Locations by Province

Alpha, Beta, Gamma—Southern Fairfield County, Connecticut  
Delta, Epsilon—Raleigh, North Carolina  
Zeta, Eta—Orlando, Florida (Florida Epsilon)  
Theta, Iota, Lambda—Muncie, Indiana  
Kappa—Gatlinburg, Tennessee (Arrowmont)  
Mu, Nu, Omicron—Normal, Illinois (Illinois Iota)  
Pi, Rho—Columbia, Missouri (Missouri Alpha)  
Tau, Sigma—Fort Smith, Arkansas  
Upsilon, Phi, Chi, Xi—Austin, Texas (Texas Alpha)  
Psi—Boulder, Colorado (Colorado Alpha)  
Omega, Alpha-Beta—Seattle, Washington (Washington Alpha)  
Alpha-Gamma, Alpha-Delta, Alpha-Epsilon—Los Angeles, California (California Delta)



### HAVE YOU MOVED OR CHANGED YOUR NAME?

\_\_\_\_\_  
Initiated Name (first/middle/maiden)

\_\_\_\_\_  
Name (first/maiden/last)

\_\_\_\_\_  
New Address

\_\_\_\_\_  
City/State/Zip

\_\_\_\_\_  
Phone Number

\_\_\_\_\_  
Chapter and Year of Initiation

\_\_\_\_\_  
If you are an officer in the Fraternity, please give title so that we may update officer lists.

Clip this form, place in a stamped envelope and send to:  
Pi Beta Phi Central Office  
7730 Carondelet, Suite 333  
St. Louis, MO 63105

Pi Beta Phi Central Office,  
7730 Carondelet, Suite 333  
St. Louis, MO 63105