

The Arrow OF PI BETA PHI

**WAIT! ARE
YOU BY CHANCE
A PI PHI?**

**YES, I'M
A PI PHI!**





PI BETA PHI FRATERNITY
ΠΒΦ
 Founded 1867

FOUNDERS

Emma Brownlee Kilgore
 Margaret Campbell
 Libbie Brook Gaddis
 Ada Bruen Grier
 Clara Brownlee Hutchinson
 Fannie Whitenack Libbey
 Rosa Moore
 Jennie Nicol, M.D.
 Inez Smith Soule
 Fannie Thomson
 Jennie Horne Turnbull
 Nancy Black Wallace

MISSION STATEMENT

The mission of Pi Beta Phi Fraternity for Women is to promote friendship, develop women of intellect and integrity, cultivate leadership potential and enrich lives through community service.

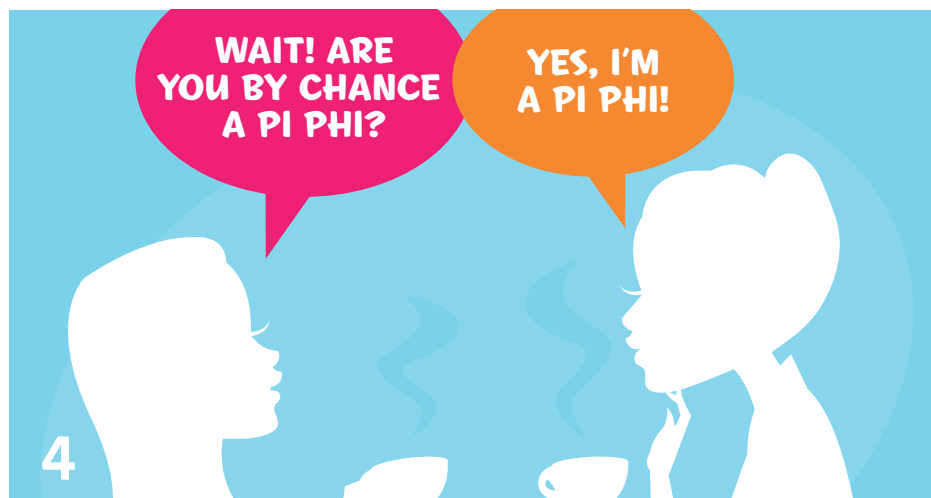
VISION STATEMENT

Pi Beta Phi Fraternity is committed to being recognized as a premier organization for women by providing lifelong enrichment to its members and contributing to the betterment of society.

CORE VALUES

Integrity
 Honor and Respect
 Lifelong Commitment
 Personal and Intellectual Growth
 Philanthropic Service to Others
 Sincere Friendship

The **Arrow** OF PI BETA PHI



Features

- 3** Extension News: Welcome Connecticut Gamma
- 4** Pi Phi Chance Encounters
- 13** Meet the 2010 Carolyn Helman Lichtenberg Crest Award Winners
- 18** Join us for the Magic of Sisterhood at the 2011 Convention
- 29** Safety Concerns in a Social World

Follow us online:



eSisters
www.pibetaphi.org/esisters



Twitter®
www.twitter.com/pibetaphihq



Facebook®
www.facebook.com/pibetaphi



YouTube®
www.youtube.com/pibetaphihq

The Arrow of Pi Beta Phi is published by Pi Beta Phi Fraternity, 1154 Town & Country Commons Drive, Town & Country, Missouri 63017. POSTMASTER: Send address changes to *The Arrow of Pi Beta Phi*, 1154 Town & Country Commons Drive, Town & Country, Missouri 63017.

Facebook® is a registered trademark of Facebook, Inc.
 Twitter® is a registered trademark of Twitter, Inc.
 YouTube® is a registered trademark of Google, Inc.



View
The Arrow[®]
 online at
www.pibetaphi.org

ARROW EDITOR

Jennifer Whittom Schmidt
 editor@pibetaphi.org

EDITORIAL STAFF

Wendy Woolard Drochelmann
 Caitlin Simpson

**MARKETING & COMMUNICATIONS
 DIRECTOR, HEADQUARTERS**

Eily Cummings

CREATIVE DIRECTOR

Tim Steele

GRAND COUNCIL

Mary Loy Tatum
 Grand President

Sue Kingsley Robinson
 Grand Vice President Collegians

Cindy Rice Svec
 Grand Vice President Alumnae

Linda Noel Ibsen
 Grand Vice President Programming

Rae Wohlhueter Maier
 Grand Vice President Finance

Diane Bielman
 Grand Vice President Communications

Paula Pace Shepherd
 Grand Vice President Membership

Departments

- 2 Perspective
- 10 Literacy
- 20 Campus Living
- 22 Collegiate News
- 28 In Her Words
- 32 Foundation
- 34 Alumnae News
- 39 Holt House
- 41 Reunions & Anniversaries
- 43 Remember
- 44 Pi Phi Express[®]
- 46 In Memoriam
- 48 News & Notes



10



20



28



34



ON THE COVER: Whether it's someone you've known for years or someone you bumped into on the street, there's nothing quite like meeting another Pi Phi. Read about some amazing Pi Phi Chance Encounters beginning on Page 4.



Member Fraternity Communications Association

PI BETA PHI HEADQUARTERS
 1154 Town & Country Commons Drive
 Town & Country, Missouri 63017
 (636) 256-0680 • FAX (636) 256-8095
headquarters@pibetaphi.org
www.pibetaphi.org

Cherishing the Bonds of Sisterhood

As we approach Founders' Day, I have to wonder if our 12 founders could ever have imagined how many lives Pi Beta Phi would touch. Sure, each of us has our pledge sisters, our college friends and our alumnae connections. But what about those women who walk into our lives, often times when we need it the most, only to find out later they are Pi Phis too.



MARY LOY TATUM
Grand President
Oklahoma Beta
Oklahoma State University

I have had many Pi Phi chance encounters throughout my life. Years ago, on a hot July afternoon, I attended an outdoor concert with my family. I decided to take a walk around the crowd seated on the grass, and I passed a group of young women wearing Pi Phi shirts. Of course, I had to stop to say hello. I asked what chapters they were from and to my surprise they were Oklahoma Betas — my own chapter. Further conversation led to an even greater coincidence — they were the daughters of two of my pledge sisters.

As Grand President, I am privileged to meet Pi Phis from many chapters and have even more chance encounters. I learn about the varied experiences they have had as both collegians and alumnae. Some lived in chapter houses; some lived as a group in dormitory suites; some were a part of award-winning chapters; others were a part of chapters with challenges. Some moved often after graduation and lived in both large cities and small towns, while others stayed in one place. Some joined large alumnae organizations, and others belong to a small lunch bunch or book club. Regardless, the common theme in all the conversations I've had is the value they place on the sisterhood shared in college and continue to share as alumnae.

In the Fraternity's infancy, our founders dreamed their beloved Pi Beta Phi would grow so other women could share in the sisterhood they established. Just one year after our founding at Monmouth College, a second chapter was established at Iowa Wesleyan University in Mount Pleasant, Iowa. For 144 years, we have continued to expand and grow. Today, we stand strong with 134 collegiate chapters and more than 180,000 alumnae. After reading this issue's feature, I think you'll find you just never know where you'll run into a Pi Phi, but when you do, you will once again experience the "Magic of Sisterhood."

Ring Ching,

A handwritten signature in cursive script that reads "Mary".

MARY LOY TATUM

Extension

Coming Soon ... Connecticut Gamma

Pi Beta Phi is proud to announce it has been invited to colonize at Quinnipiac University. Colonizing recruitment for the Connecticut Gamma Chapter will take place in fall 2011.

Quinnipiac University is located in the heart of New England, about 90 minutes from New York City and two hours from Boston. Quinnipiac, consistently ranked among the best universities by *U.S. News & World Report*, is a private, coeducational university with 5,900 undergraduate and 2,000 graduate students. Fraternities and sororities have existed at this university for 50 years; approximately 50 percent of students on campus are Greek.

Pi Beta Phi submitted materials to Quinnipiac's Expansion Committee in August 2010 for review and was one of five groups invited to make a presentation to the University's Panhellenic community. In December 2010, Pi Phi learned it was chosen as one of two groups who will colonize — Pi Phi in the fall of 2011 and Kappa Delta in 2012/2013. Pi Beta Phi will join four National Panhellenic Conference groups currently on campus: Alpha Chi Omega, Alpha Delta Pi, Kappa Alpha Theta and Phi Sigma Sigma.

"Pi Beta Phi is honored to have been chosen to colonize at Quinnipiac University," said Grand Vice President Membership PAULA PACE SHEPHERD, Texas Epsilon. "Quinnipiac consistently ranks among the best universities in the U.S., and Pi Phi is proud to partner with the university to offer more leadership and philanthropic opportunities for the women on this campus."

Information about Pi Phi's newest chapter, Connecticut Gamma, is available at www.pibetaphi.org/quinnipiac.



CHANCE ENCOUNTERS

You just never know where you'll meet another Pi Phi. She could be someone you've known for years, but then you hear her humming "Ring Ching Ching." Maybe she's someone standing in front of you in the grocery store, and you notice her Pi Phi keychain. Your heart skips a beat as you utter those five little words making an instant connection ... "Are you a *Pi Phi*?"

These moments are what we call Pi Phi Chance Encounters.



Pennsylvania Gamma ANNIE CARUTHERS (left) and Indiana Beta WANDA ZELLER CLEGG (right).

A TOAST TO PI PHI

ANNIE CARUTHERS, Pennsylvania Gamma

During my winter break junior year, I went to Italy with my family, on a large group trip. The first night in Italy we went out to a restaurant to get to know the rest of the group. Our waiter was teaching us how to do a proper Italian toast and told us to say "Cin Cin" (pronounced Chin Chin) and clink our glasses. The woman sitting across from me said, "In my sorority, we say Ring Ching Ching!" I looked at her in disbelief and asked if she was a Pi Phi. She introduced herself as WANDA ZELLER CLEGG, an Indiana Beta, who was initiated in 1945.

We did the handshake and began discussing our involvement in Pi Phi. Wanda is still heavily involved in Pi Phi through her alumnae club. It was great to find such a close connection with someone so far away from home. She inspired me, because even though she had long left her college days, her love and involvement with Pi Phi was something she never gave up. I was worried after graduation my connection with Pi Phi would fade, but Wanda made me realize you aren't just a Pi Phi in college, but a Pi Phi for life.

FRIENDS AND LEADERS FOR LIFE

LAUREN O'DONOGHUE, D.C. Alpha

I was asked to facilitate a group at the annual Greek Leadership Retreat at James Madison University. When I met my co-facilitator at the retreat, I discovered she was also a Pi Phi. Although we belonged to two different chapters from different parts of the country, Illinois Zeta KRISTI HANLON MARSH and I clicked like we were from the same chapter. We even learned we are both pursuing our master's degree in college student personnel administration. We led a successful group at the retreat, and we were glad to share our experiences and values as Pi Beta Phi sisters with our students.



Illinois Zeta KRISTI HANLON MARSH (left) and D.C. Alpha LAUREN O'DONOGHUE (right).



North Carolina Alpha SARAH HOLBROOKS (left) and Tennessee Gamma MARY OVEREND (right).

SISTERS WORKING SIDE-BY-SIDE

MARY OVEREND, Tennessee Gamma

After graduating from the University of Tennessee, I moved home to Atlanta and was interning at various non-profit organizations. About a week after starting an internship with the Children's Healthcare of Atlanta Foundation, I discovered two other interns, SARAH HOLBROOKS and AMANDA JOHNSON, were North Carolina Alphas from the University of North Carolina. We have since become great friends. What's even more amazing is that Amanda and I are now employed full-time by Children's Healthcare of Atlanta, and we work with another Pi Phi, Mississippi Beta CALLIE LITTLE.

SAILING SISTERS

JANE FITZPATRICK BOUDREAU, Oklahoma Beta

Once again, there is proof of the ever-reaching bonds of Pi Phi sisterhood, and I have my Mother's Day present of sailing lessons to thank for it. In July 2010, I arrived at sailing lessons in Oyster Bay, New York, and met my sailing instructor, NICOLE HERING. You can imagine my surprise to learn she was a recent Syracuse University graduate and a New York Alpha alumna. Nicole grew up sailing and racing sailboats and teaches lessons on the weekend as a retreat from her marketing job in New York City. Sailing lessons were a "breeze" as Nicole and I enjoyed being with Mother Nature and talking non-stop of the bonds of friendship "chartered" by Pi Phi.



Oklahoma Beta JANE FITZPATRICK BOUDREAU (left) and New York Alpha NICOLE HERING (right).

DECAL DAY

PAT STEPHENSON CAVALIER, Tennessee Alpha

In 2003, I began to volunteer in an upscale resale-clothing store in Capitola, California, for an auxiliary organization called The Daisy, which benefits the Family Service Agency of the Central Coast. The following year, I was assigned to work my three-hour monthly shift with CAROL VOWELS HENRY, another volunteer. We felt instant camaraderie and thoroughly enjoyed working together. Weeks later, after closing the shop one day, Carol noticed the Pi Phi decal on the back bumper of my car and exclaimed, “Are you a Pi Phi?” I told her I am a Tennessee Alpha alumna, and she revealed she is an Oregon Alpha alumna. So every shift since, between sales, we talk about our Pi Phi experiences and our lives as alumnae for more than 50 years. We have become extremely close — we’ve even attended Pi Phi alumnae functions together! We sincerely enjoy each other’s friendship, especially since our “decal day.” One customer asked if we were sisters because she thought we looked so much alike. Now we can answer, “Absolutely, yes. We are sisters!”



Tennessee Alpha PAT STEPHENSON CAVALIER (left) and Oregon Alpha CAROL VOWELS HENRY (right).

PI PHI PRINCESSES

STEFANIE FUJINAMI, California Nu

In 2006, I decided to participate in Nisei Week, a Japanese festival celebrating the Japanese and Japanese American community in Los Angeles. Each year, Nisei Week selects a new queen and a court to serve as public relations ambassadors for its community. Members of the court are sponsored by community organizations. One evening while we were waiting for our weekly meeting to start, I noticed another member, LISA SHIMABUKURO, had the Pi Beta Phi Greek letters on her tote bag. I asked her if she is a Pi Phi, and she said she is a California Eta alumna. We were so excited to make this connection and we knew it was the beginning of a great friendship. Lisa was crowned First Princess, and I was crowned Princess. We had the opportunity to volunteer together throughout the year, travel to Los Angeles’ sister city in Nagoya, Japan, and pave the way for the incoming 2007 court.



California Nu STEFANIE FUJINAMI (left) and California Eta LISA SHIMABUKURO (right).

Our Pi Beta Phi sisterhood makes our friendship extra special. We talk to each other almost every day, and we see each other at least once a week. Lisa is currently on the Alumnae Advisory Committee (AAC) at Loyola Marymount University, and I have served on AAC at University of California, Los Angeles. Our goal is to eventually be neighbors so our kids can play together.



From left, California Betas JENNA ESSAKOW, LIZA COLOMBATTO DYER and KATE KENNEDY.

COFFEE SHOP ENCOUNTER

LIZA COLOMBATTO DYER, California Beta

For the last two years, I've participated in the Susan G. Komen 3-Day for the Cure® breast cancer walk in San Francisco in memory and in honor of my mother DEE DOWNS COLOMBATTO, California Beta, who died of breast cancer in 2002. The walk includes 60 miles in three days and each host city raises millions of dollars for breast cancer research. This year at the end of the walk I ducked into a coffee shop to use the restroom. At the front of the line was a young woman also wearing the 3-Day for the Cure T-shirt. As we exchanged small talk, she mentioned she is a Pi Phi. I was so surprised to find out she is a California Beta. JENNA ESSAKOW and her Pi Phi sister KATE KENNEDY had walked together as their own team. What a chance encounter of Pi Phi love!

TOUCHED BY AN ANGEL

HANNAH LOBDELL, Kentucky Beta

Unbeknownst to me, the weekend my family moved into our new home in Louisville, Kentucky, I would be touched by an angel. Our next-door neighbor, KAREN EMBERTON, immediately introduced herself as a University of Kentucky alumna after noticing my University of Kentucky sweatshirt. We began to share stories about our love for the university. She asked if I would be going through recruitment, which I had planned to do.

After becoming a Pi Beta Phi, I quickly learned not only was Karen a Kentucky Beta alumna, but she also has served the Fraternity for more than 35 years. She is currently the Collegiate Region Eight Director. I find Karen's most touching attribute is that she not only dedicates her time to the Fraternity, but she helps Pi Phi collegians understand how fulfilling alumnae involvement can be. Pi Beta Phi doesn't have to end after four years of college, and she is a testament to this. If you ask her 6-year-old daughter what she is going to be for Halloween this year, she'll tell you she'll be a Pi Beta Phi angel. It's evident Karen's legacy will last more than a lifetime!



Kentucky Betas KAREN EMBERTON (left) and HANNAH LOBDELL (right).

Susan G. Komen 3-Day for the Cure® is a registered trademark of The Susan G. Koman Breast Cancer Foundation, Inc.



Indiana Delta MARIAN KIDD CUNNINGHAM (left) and Minnesota Alpha MARGARET PATERSON BECKER (right).

DIVINE INTERVENTION

MARGARET PATERSON BECKER, Minnesota Alpha

Marian and I belong to the same church in Fox Chapel, Pennsylvania. My husband and I joined a few years ago and were trained as Stephen Ministers. In 2008, following the training, I was assigned to MARIAN KIDD CUNNINGHAM, Indiana Delta, who lived alone at age 90. I was 78. From the beginning of our relationship, we both were happy to know each other. We meet about one hour per week and the coincidences in our background continually amaze us. Her father taught at Purdue University; my father taught at the University of Minnesota, and two of our three grandchildren graduated from Purdue. Over the months, we continued to talk and laugh about many subjects. After about five months, Marian asked me, “We enjoy each other so much, by any chance could you be a Pi Phi?” and I said, “YES!”

IN A NEW YORK MINUTE

JENNIFER MCCRACKEN NEW,
North Carolina Beta

One Wednesday morning in New York City, I joined three other mothers in the lobby of the Nightingale-Bamford School, where our daughters are in second grade. We had been asked to accompany the class on a field trip. I had known these women from our daughters’ school activities for the past three years, but the subject of Pi Phi had never come up. Ironically, it was on April 28, 2010, Pi Phi’s Founders’ Day, we uncovered a common thread in our pasts; we are all Pi Phis! As we enjoyed a blustery April outing with our daughters’ class, we celebrated our newfound sisterhood and were reminded of the lifelong enrichment of Pi Phi.



Pictured from left, North Carolina Beta JENNIFER MCCRACKEN NEW, North Carolina Alpha MOLLY FARRELL STOCKLEY and Illinois Epsilon JULIE SCHONBERGER WHITE. Not pictured, New York Zeta DAWN GOLDSTEIN COLGATE.

CIAO SORELLA

BRENNA TUDOR, Pennsylvania Kappa

Last summer, I decided to study abroad in Florence, Italy. When I met my traveling group at John F. Kennedy International Airport, I was extremely disheartened to see no one else was traveling alone. I made a few friends on the flight and spent my first night in Florence with them. The next morning, I received my roommate assignment, and to my dismay, I would not be living with any of the girls I had met the previous day. My new roommate, KELLY HEDMAN, seemed just as nervous to meet me. We met our host family and then shared an awkward drive to the home where we would be living together for the next six weeks.

When we arrived at our host family's villa, we were shown our room. As Kelly and I began to unpack our bags in silence, I thought to myself, "This is going to be a long summer." Then, out of the corner of my eye, I saw Kelly pull out a wine and blue Pi Beta Phi T-shirt. I quickly pulled out my favorite Pi Phi T-shirt and exclaimed, "I'm a Pi Phi too!"

Pennsylvania Kappa
BRENNA TUDOR (left)
and New York Alpha
KELLY HEDMAN.



In the flash of that wine and blue second, my whole summer turned around. Pi Phi gave Kelly and me something to instantly connect over, and any lingering awkwardness had vanished. Living with Kelly made me realize how real the bonds of sisterhood are between Pi Phis. We helped each other get through bouts of homesickness, and we also explored Florence, Sicily and Milan together. I would never have had such an amazing summer if Kelly hadn't been my roommate. ↪



In May 2010, six teachers at Pembroke Hill School in Kansas City, Missouri, discovered their Pi Phi connection. From front left, Kansas Beta KATHERINE HARDIN FLANIGAN, Missouri Alpha CHRISTY RODES and Ohio Zeta MARY ANN RUDYK JERMANN. From back left, Kansas Alpha CAROL HOLLIDAY DALLAM, North Dakota Alpha AMY WALKER LYSNE and Kansas Alpha BETH ROUSH ZOBRIST.



Eight women traveling on a recent Alaskan cruise discovered their shared sisterhood in Pi Phi. Some were traveling together, while others met for the first time. From left, Ohio Eta TERRY KIRKWOOD, California Gamma LINDA JOSI BALL, North Carolina Alpha JOYCE DICKMAN KELLER, California Gamma DIANE FRAME CALLEE, California Delta JANET DAGGETT BUESE, California Gamma DEBORAH FRAME COVEY, California Gamma MARILYN DUNTUN SIMPSON and California Gamma DONNA FRAME TUTTLE.

Don't Be Left Off the Map

In the 2009–2010 partnership year, Pi Beta Phi and First Book® put more than 720,000 brand-new books in the hands of children in need. These books were distributed to qualified recipient groups in North America. Several of these recipient groups are programs Pi Phi has identified and assisted in the registration process with First Book. The map highlights several recipient groups who received books as part of the Pi Beta Phi and First Book partnership.

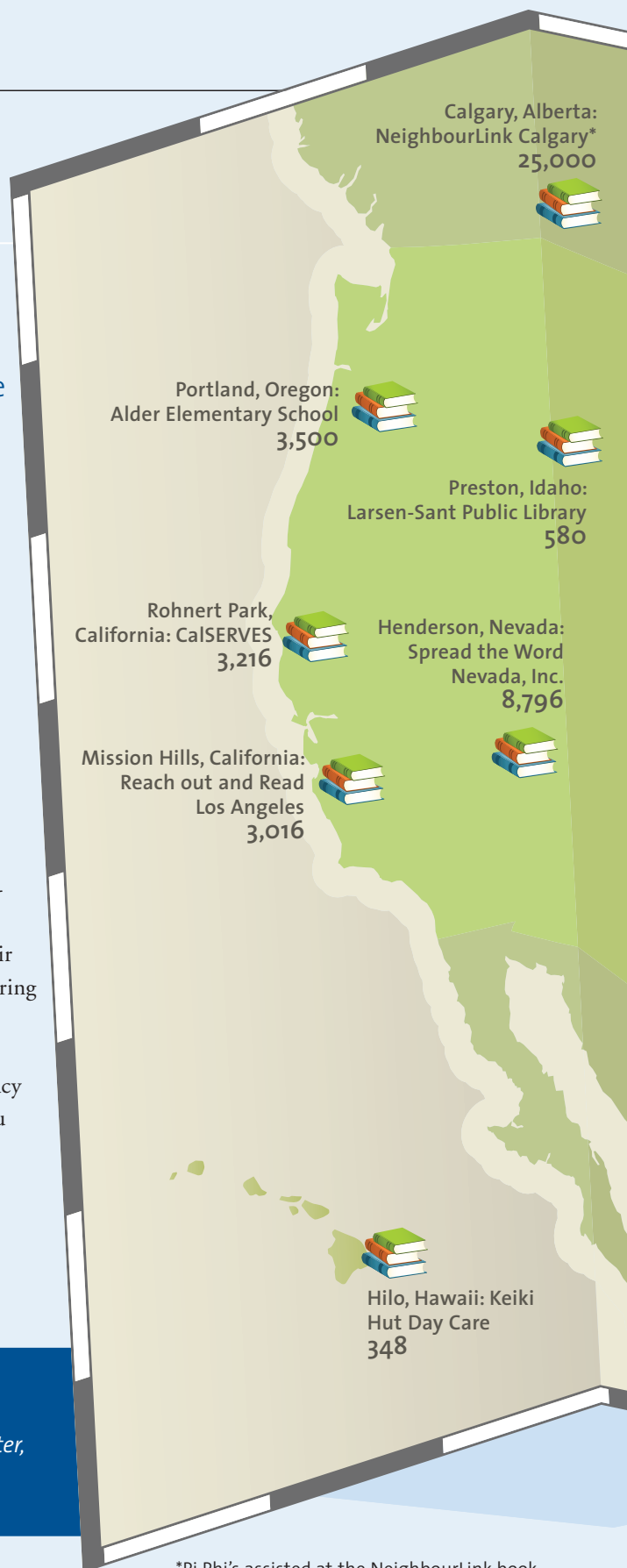
Make Sure Your Community is Represented

Through Pi Beta Phi's Local Literacy Initiative, alumnae organizations have the opportunity to fundraise in their community and place brand-new books in hands of children. Alumnae organizations are urged to identify local, community-based groups serving children in need in their areas and encourage these groups to register with First Book. By registering with First Book, qualifying groups gain access to free and deeply discounted brand-new books and educational materials.

To learn more about this program, simply download the Local Literacy Initiative Program Toolkit from the Pi Beta Phi website (from the menu choose Literacy>First Book>Alumnae Support). This toolkit and the outreach tools were created to assist members as they reach out to their local communities and introduce groups to First Book.

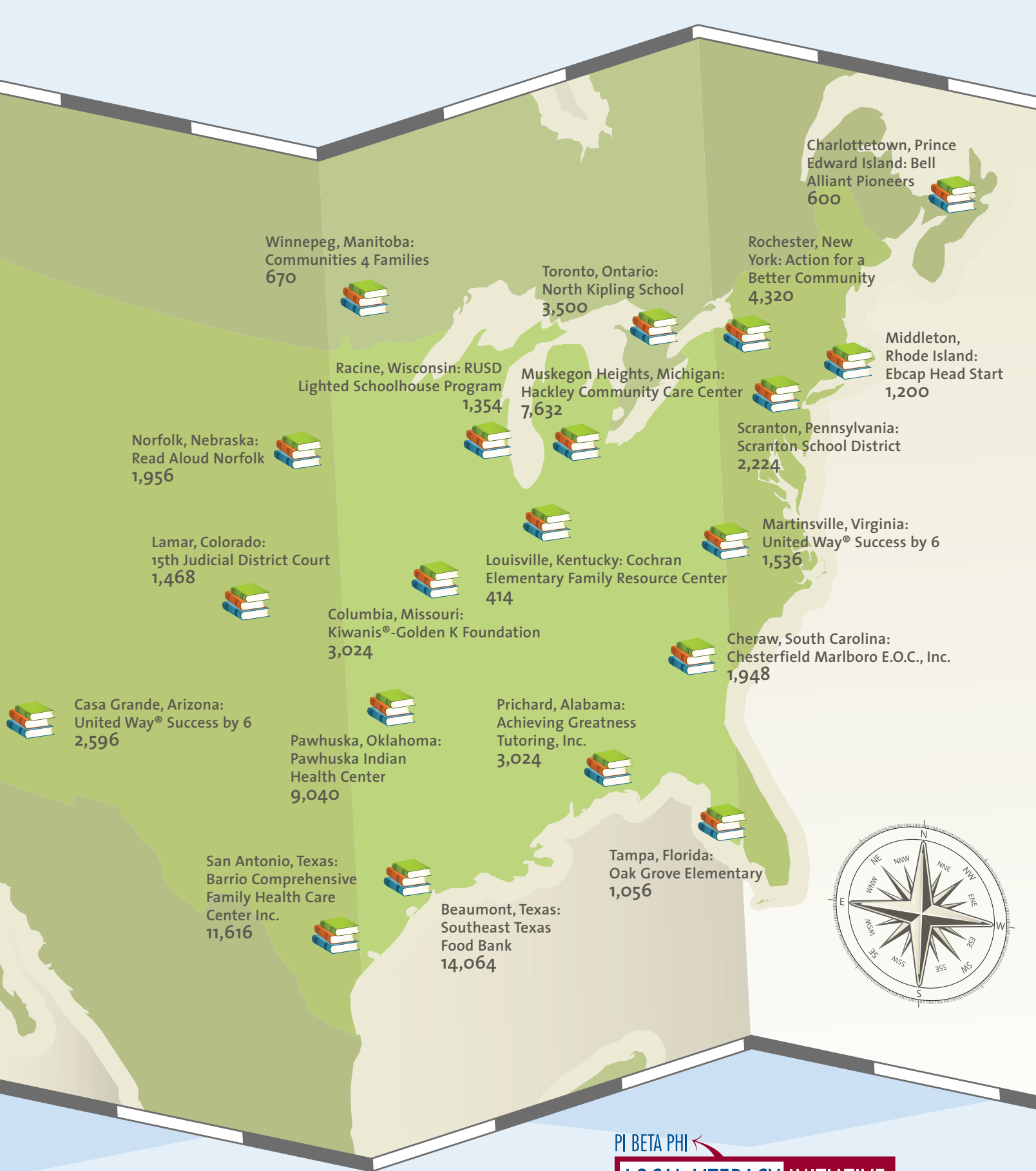
Don't forget to check out information about Pi Phi and First Book outreach efforts in Canada too.

Is your group registered? Individual collegians and alumnae members can register First Book recipient groups. The more recipient groups Pi Phis register, the more books donated to children in need.



First Book® is a registered trademark of First Book Corporation.
United Way® is a registered trademark of United Way Worldwide Non-Profit Corporation.
Kiwanis® is a registered trademark of Kiwanis International Corporation.

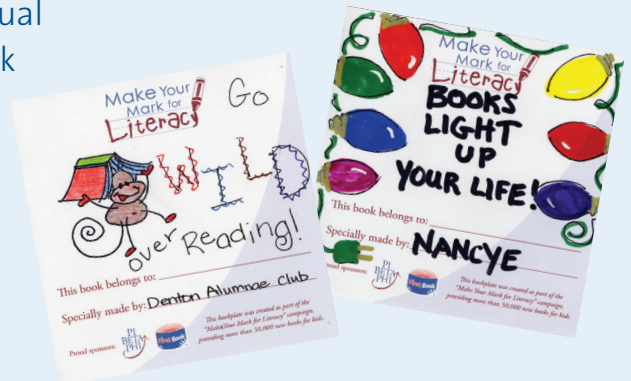
*Pi Phi's assisted at the NeighbourLink book distribution, assisting in distributing 25,000 books to recipient groups in the Calgary area.



PI BETA PHI
LOCAL LITERACY INITIATIVE

Making a Difference: 2011 Fraternity Day of Service

On March 2, Pi Beta Phi celebrated its fourth annual Fraternity Day of Service with its “Make Your Mark for Literacy” campaign. Alumnae organizations and collegiate chapters around the world decorated bookplates to be placed in brand-new books for children from low-income families. Because of their efforts, a total of 50,000 books will be distributed through Pi Phi’s literacy partner, First Book.



Bostonian Alumnae Club

One of the goals of the Bostonian Alumnae Club’s Fraternity Day of Service event is to make the children and families realize reading is fun. The club hosts a literacy event benefiting four local agencies at the Lynn, Massachusetts, Public Library. The children participating made Cat in the Hat® hats, ate green eggs and ham, decorated bookplates and made bookmarks. Many of the children the club serves come from homes where English is a second language. The children learn English through reading at school and many times are helping their parents and family members learn English at home. The Bostonian Alumnae Club encourages these children and families to continue learning; and an excellent way of doing this is by reading.

Nation’s Capital Alumnae Club



Washington D.C. has one of the worst illiteracy rates in the country so Fraternity Day of Service is greatly impactful in the community. Nation’s Capital Alumnae Club members visited a Barnes and Noble® bookstore, read with families and set up a bookplate coloring station to increase literacy awareness.

Mississippi Beta, University of Mississippi

Fraternity Day of Service at Mississippi Beta means a day of fun with the local elementary school children who have participated in Pi Phi’s Champions are Readers® (CAR) program. It is the chapter’s way to celebrate Pi Phi’s philanthropy and make a difference in the life of a child. In previous years, Mississippi Beta has created a tradition of holding a children’s reading festival and First Book Speed Read™ at the chapter house for many local elementary schools participating in the CAR program as part of Fraternity Day of Service. Free kid-friendly dinners, reading games, Speed Reads, bookplate decorating and, most excitedly, pictures with The Cat in the Hat are all part of the night.

Arizona Chapters and Alumnae Organizations

Alumnae organizations and chapters in Arizona are working together to celebrate Fraternity Day of Service. The women partnered with local Barnes and Noble retailers and encouraged children and adults to design bookplates, while explaining each bookplate provides a brand-new book for a child from a low-income family. Pi Phis make the community aware of the need, and members are rewarded by the outcome. One mother explained to her school-aged son, as he was coloring a bookplate, “This will go into a book for a little boy or girl to read; one who can’t go to the bookstore like we do.” ↪

Cat in the Hat® is a registered trademark of Dr. Seuss Enterprises, L.P.
 Barnes and Noble® is a registered trademark of Barnes and Noble College Booksellers, LLC.
 Champions are Readers® is a registered trademark of Pi Beta Phi.
 First Book Speed Read™ is a registered trademark of First Book Corporation.

Meet the Carolyn Helman Lichtenberg Crest Award Winners

The Carolyn Helman Lichtenberg Crest Award was established in 1991 to honor distinguished individual alumnae for outstanding personal achievement in the areas of volunteer service or professional accomplishments. This award is named in honor of the Fraternity's Grand President from 1985 to 1991, CAROLYN HELMAN LICHTENBERG, Ohio Alpha. Since its inception, 119 extraordinary Pi Phis have received this prestigious award. *The Arrow* is pleased to introduce the 2010 recipients.



MARTHA KING BAIRD, Nashville, Tennessee
Tennessee Beta, Vanderbilt University

MARTHA KING BAIRD spent more than 1,200 hours in 2009 working on housing projects for Habitat for Humanity®. She has been a volunteer with the Nashville Area Habitat for Humanity for 11 years, serving as on-site supervisor for 187 homes and creating the agency's Faith Relations Committee. Her work also includes housing projects in Ireland, Hawaii and several Gulf Coast cities devastated by Hurricane Katrina. Her additional volunteer activities include Loaves and Fishes, a feeding program for the poor and homeless; Community Care Fellowship, a program providing shelter and meals for those in need; Meals on Wheels for Fifty Forward; and mission trips to Honduras and Guatemala with Belle Meade United Methodist Church. Martha is also an active Pi Phi volunteer and has served on the Tennessee Beta Alumnae Advisory Committee, as President of the Nashville Alumnae Club and as a member of the Fraternity's Gatlinburg Study Committee. Martha was recently selected as a recipient of the 2010 Direct Service Volunteer Award and was chosen as one of six Mary Catherine Strobel Volunteer Award winners in Middle Tennessee. Pi Beta Phi is also proud to honor her dedication to service with the Carolyn Helman Lichtenberg Crest Award for Community Service this year.



JUDITH STRANG CURRAN, Seattle, Washington
Washington Alpha, University of Washington

JUDY STRANG CURRAN has chaired the Fred Hutchinson Cancer Research Center's annual fundraising event, the Shore Run/Walk, in Seattle for the last four years. Under Judy's leadership, the Center has seen an increase in donations and participation. More than \$600,000 has been raised in four years for bone marrow transplant research. Her involvement does not stop there. She plays a role in Ronald McDonald House's annual three-on-three basketball tournament, named in memory of her youngest daughter, Jill. She and her husband also continued the legacy of their daughter's caring and generous spirit by establishing four scholarships in her name at Seattle Preparatory School, Santa Clara University, Syracuse University and Seattle University. Judy served as the Seattle Alumnae Club President for two years, chaired the Pi Phi Personality Luncheon and hosts events such as the Angel Brunch and Washington Alpha's Senior Farewell. Judy's spirit of service is the reason she was chosen as one of this year's recipients of the Carolyn Helman Lichtenberg Crest Award for Community Service.



JANICE SHRADER FALK, Fort Calhoun, Nebraska
Nebraska Beta, University of Nebraska

JAN SHRADER FALK, a recipient of the Carolyn Helman Lichtenberg Crest Award for Community Service, serves on the Board of Directors and various committees for a variety of organizations throughout the Omaha, Nebraska, metropolitan area. She currently sits on the Board of Directors for the Clarkson Service League for Nebraska Health System and the Junior League of Omaha Foundation as well as an Ambassador for Ak-sar-ben Friends. Professionally, Jan serves as Parliamentarian for national, state and local organizations and remains a member of the National Association of Parliamentarians and the Nebraska State Association of Parliamentarians. In 2010, Jan received the Leah Koester Achievement Award from the Nebraska State Association of Parliamentarians. Additionally, Jan has remained committed to Pi Beta Phi, serving as International Fraternity Parliamentarian since 1986, as well as President of the Omaha, Nebraska, Alumnae Club and President of the Pi Beta Phi Omaha Mothers' Club. Now a Golden Arrow, Jan's work in Pi Phi over the years has earned her honors such as the Omaha Alumnae Club Founders' Day Award and Omaha Panhellenic Woman of the Year Award.



**JENNY BILEK KLEIN, Laguna Hills, California
California Eta, University of California, Irvine**

JENNY BILEK KLEIN's 30-year career as a Human Resources Executive contributes to her community involvement today and is why she was awarded the Carolyn Helman Lichtenberg Crest Award for Community Service. She is a board member of the Professionals in Human Resources Association (PIHRA) Foundation, where she shares her professional knowledge by assisting high school and junior college students in landing their first jobs, conducting mock interviews and building a track to help achieve their career goals. This dedication earned her the Outstanding Volunteer Award from the PIHRA Foundation. Additionally, Jenny serves on the Executive Board of the J.F. Shea Therapeutic Riding Center, assisting with human resources operations and strategic plans for the Center's future growth. The Center honored Jenny and her husband, Bill, in 2010 as co-recipients of the 2010 Michael Lewis Friends of the Disabled Award, named after the center's first client, for their generous giving and dedicated support. Jenny and Bill also received the 2010 Breath of Life Award from the Cystic Fibrosis Foundation for their generous gifts as advocates for Cystic Fibrosis research. The South Orange County, California, Alumnae Club is also thankful to have her support and dedication of time with the club's annual literacy initiative event and other philanthropic endeavors.



**KASEY LOWE MCCALL-SMITH, Edinburgh, United Kingdom
Arkansas Alpha, University of Arkansas**

KASEY LOWE MCCALL-SMITH is being honored as a recipient of the Carolyn Helman Lichtenberg Crest Award for Professional Achievement for her dedication to human rights law. In addition to a law degree from the University of Arkansas, Kasey has earned a Masters of Laws in international economic law, and she is currently a Ph.D. candidate in international law at the University of Edinburgh. Her professional life has been dedicated to serving as a legal practitioner as well as striving to be an ethical researcher and educator of international law. Kasey was in private legal practice in Nashville, Tennessee, before moving to Edinburgh in 2008. She has had numerous publications, book reviews, research assistantships and conference invitations for her work in human rights. She has also been an active lecturer and a coordinator of a peer-assisted program for first year law students while in Edinburgh. Despite her international residency, Kasey remains involved in Pi Beta Phi through the London Alumnae Pocket. While in Nashville, Kasey served on the Christmas Village Board for two years and was the Corresponding Secretary and Young Alumnae Social Development Chair. In spirit with Pi Phi's literacy efforts, Kasey is a volunteer and founding member of the Edinburgh chapter of Room to Read.



TRINA GORDON MCCALLISTER, Chicago, Illinois
Alabama Gamma, Auburn University

TRINA GORDON MCCALLISTER, the first woman to lead a global executive search firm, has been chosen as a recipient of the Carolyn Helman Lichtenberg Crest Award for Professional Achievement. She is a two-term Chairman of Boyden World Corporation, which has 79 offices in more than 40 countries, is a member of its Board of Directors and also acts as the Managing Director of Boyden Chicago. With more than 25 years of industry experience, Trina has successfully placed Presidents and Chief Executive Officers, Chief Operating Officers and other top business leaders. She also assists global and multinational companies in selecting key leadership. In 2008, Trina was named one of the “50 Most Influential Headhunters in the World” by *BusinessWorld*. She has been featured in *FORTUNE* magazine, The Wall Street Journal, WallStreetJournal.com and *Directors Monthly*. Trina was the keynote speaker for the Executive Search Summit and was also a participant in *FORTUNE*'s Most Powerful Women Summit. Despite her demanding professional role, Trina has served as President of Friends of Prentice for Prentice Women's Hospital of Northwestern Memorial Hospital and has been a member of Northwestern Memorial Foundation's Board of Directors. She also serves on the Board of Governors of the Chicago Zoological Society, the Chicago Network, The Economic Club of Chicago and serves on the Advisory Council for the College of Liberal Arts at Auburn University.



TERESA KIRK ROLPH, Houston, Texas
Ohio Eta, Denison University

TERI KIRK ROLPH has been a successful educator for the past 31 years serving populations with autism, attention deficit hyperactivity disorder, learning disabilities, cerebral palsy, hearing impairments and various neurological impairments. She has been chosen as a Carolyn Helman Lichtenberg Crest Award Winner for Professional Achievement. Teri's unique gift for working and communicating with children allowed her to develop a fulfilling and successful career as a speech/language pathologist, eventually presenting seminars and workshops on a local, state and national level. Teri has presented at the Texas Speech-Language Hearing Association, Houston Area Association for Communication Disorders, Ohio Speech-Language Hearing Association and American Speech-Language Hearing Association. Her career also has branched into teaching and training animals. She volunteers with her dog to provide therapy at a local hospital and for a local elementary school's autism program. Teri has attended workshops and trained dogs for the American Kennel Club Canine Good Citizen® Program in addition to teaching classes in animal nutrition, communication and homeopathic remedies using the Lightfoot Way. Most recently, Teri has been developing a therapeutic horse program for children with disabilities in the Greater Houston Area.

Canine Good Citizen® Program is a registered trademark of the American Kennel Club, Inc.




KATHRYN LOUISE TAYLOR, Tulsa, Oklahoma
Oklahoma Alpha, University of Oklahoma

KATHRYN LOUISE TAYLOR has been chosen as a recipient of the Carolyn Helman Lichtenberg Crest Award for Community Service. Kathy, a successful attorney in Tulsa, Oklahoma, was appointed by Oklahoma's Governor as the Secretary of Commerce, Tourism and Workforce Development in 2003. From there, Kathy was elected as the second-ever female Mayor of Tulsa, serving from 2006–2009. Following her mayoral term, Kathy chose to return to the Governor's cabinet as Chief of Education Strategy and Innovation and chaired Oklahoma's Race to the Top, promoting education and literacy throughout the state. In 2010, Kathy returned to private law practice. She has served on numerous boards over the years, including the Board of Bank of Oklahoma, N.A., and currently serves on the Board of Sonic Industries, Inc. Kathy has earned honors such as the Oklahoma Bar Association's Mona Lambird Spotlight Award, the Pinnacle Award from the Mayor's Commission on the Status of Women and the Tulsa Press Club's Headliner Award. Additionally, in 2010, she was inducted into the Tulsa Hall of Fame and named "Tulsan of the Year" by *Tulsa People*. Despite her busy professional life, this former Pi Phi Chapter President and Traveling Graduate Consultant has shown consistent support for the Tulsa Alumnae Club. Kathy has served as Mom's Day Skit Chairman, regularly offers her home for alumnae events and consistently donates time and money to the Fraternity's philanthropic causes.



DR. CHRISTINE KAJIKAWA WILKINSON, Tempe, Arizona
Arizona Beta, Arizona State University

DR. CHRISTINE KAJIKAWA WILKINSON's successful career in academia has earned her the Carolyn Helman Lichtenberg Crest Award for Professional Achievement. At Arizona State University (ASU), Christine was Vice President of Student Affairs for 12 years before being named Senior Vice President and Secretary of the University in 2002. She also acts as the President of the ASU Alumni Association and serves on numerous University committees and councils. Additionally, Christine applies her knowledge in enrollment management and in administration as a professional consultant. Volunteering also plays a key role in her life as she has served on the Board of her local American Red Cross chapter and on the National Board of Governors for the American Red Cross®. With great interest in health care, she served as President of St. Joseph's Hospital Foundation Board for two years; assisted with St. Luke's Health Initiatives as an Executive Committee and Board of Trustees Member; and served on the Arizona Hospital and Healthcare Association Executive Board as well as the Southwest Autism Research and Resource Center. Dr. Wilkinson has earned such honors as the Outstanding Contribution Award from the ASU Commission on the Status of Women, the Woman of Distinction Award: World of Learning from the Girl Scout 2003 World Awards, Clara Barton Volunteer Leadership Honor Award from the American Red Cross and, most recently, the Woman of the Year Award from Valley Leadership. 

American Red Cross® is a registered trademark of the American National Red Cross.

CONVENTION 2011

Don't miss out on all the fun!
Register today to celebrate
The Magic of Sisterhood
June 24–28, 2011, in beautiful
Orlando, Florida. For more
information, visit the 2011
Convention website,
www.pibetaphi.org/convention.



WHY SHOULD YOU ATTEND CONVENTION?

Convention brings opportunities for members to experience magic that is inspirational, educational and operational. A wide range of breakout sessions and enrichment meetings will cover topics in each of these areas. Each attendee can choose what is most relevant for her and her chapter, Alumnae Advisory Committee (AAC), Chapter House Corporation (CHC) or alumnae organization.

For example, collegiate attendees may choose to attend a seminar led by members of PHI level chapters, sharing their tips and advice for helping other chapters achieve that status. They may also attend a session on the membership selection process. Alumnae attendees may choose to attend sessions about the benefits of serving on an AAC or CHC. They can also attend a session hosted by Premier Club and Clubs of Excellence to learn their best practices.

In addition, there will also be a special display of historical items and photographs honoring our past 100 years of literacy service. And our new Friends and Leaders for Life Resource Series promises to bring some terrific content to attendees.

Pi Beta Phi Foundation will be there with important information at their Foundation Information Center on scholarships, fundraising for housing, Emma Harper Turner Assistance, the new Foundation Ambassador program and much more. Various convention speakers sponsored by the Foundation promise to elevate, challenge and inspire you to new levels of personal and Pi Phi accomplishment.

The Fraternity Housing Corporation has a complete housing symposium planned with thought provoking and informative breakout sessions, such as:

- “Are You Prepared for the Future?” — Teaching you how to financially prepare your house for the next five years and beyond.
- “Bridging the Gap Between AAC/CHCs” — Discussing how two vital and valuable groups can and need to work hand in hand for the betterment of the chapter.
- “Fundraising 101” — The various ways to fundraise for your CHC (offered in partnership with Pi Beta Phi Foundation).

Of course, no one will want to miss an opportunity to shop for clothing, accessories and other branded merchandise at Pi Phi Express®!

No matter where your interests lie, 2011 Convention attendees are sure to learn new things, meet new friends and experience the Magic of Sisterhood!

SLATE OF OFFICERS NOW AVAILABLE ON WEBSITE

Candidate photos, resumes and vision statements as well as election rules are available now on the convention website, www.pibetaphi.org/convention.

ACCOMMODATIONS

The Hilton® in the *Walt Disney World*® Resort is located directly across from *Downtown Disney*®. This official *Walt Disney World*® Resort hotel is only steps away from some of the area's most popular amenities and attractions and includes complimentary shuttle service to *Disney*® Theme Parks.

GETTING TO CONVENTION

Pi Phi will have special fares to the 2011 Convention. To obtain these rates, please contact Debbie or Pat at Jade Travel (800) 627-9258. Please call Monday through Friday between 8 a.m. and 5 p.m. Central Standard Time.

REGISTRATION

Online registration is available at www.pibetaphi.org/convention. Choose from full-time, part-time, daily registration and individual meal options. If you are unable to register online, request a packet by e-mailing events@pibetaphi.org or calling Headquarters at (636) 256-0680.

SEE THE SITES!

Arrive a day early and join us on Friday, June 24, as we visit Downtown Winter Park, Florida. Tour attendees will enjoy a scenic boat tour through the beautiful lakes and canals of historic Winter Park. You'll spend the afternoon shopping in the many one-of-a-kind boutiques and well-known shops. Please contact Florida Beta DEBORAH ADAMSON COOK, headquarters@pibetaphi.org, for additional information. Early registration is encouraged.

DISNEY® THEME PARK TICKETS

We want you to enjoy the magic of *Disney*®! Pi Beta Phi convention attendees may extend their stay and purchase special priced *Disney*® Theme Park tickets. Choose from one of four Theme Parks: *Magic Kingdom*® Park, *Epcot*®, *Disney's Hollywood Studios*™ and *Disney's Animal Kingdom*® Theme Park. Advance purchase is required to take advantage of these discount prices. For more information or to purchase tickets online, visit the Pi Beta Phi convention website, www.pibetaphi.org/convention, and click on Registration, then Disney Add-On Packages. You may also call (407) 566-5600.



"I will never forget my initiation. I was so shocked to see my mom was the one who pinned me. I had no idea she would be there. I turned around to see her with a big smile on her face, and I can only imagine the look on my face. It was very special to have her at my ceremony and celebration. Furthermore, the overwhelming support of her Pi Phi friends was fantastic. It finally clicked when I realized many of the ladies I knew as my mom's good friends were Pi Phis."

— LAUREN TATUM, *Texas Delta*

We want to hear from you! Headquarters is still in need of more of your favorite Pi Phi memories — or "magic moments" — to be shared throughout convention. These moments can relate to any special Pi Phi occasion, including philanthropy, literacy, Cookie Shines, initiation, Bid Day, big sister/little sister, alumnae organization events, reunions, travel adventures with Pi Phi sisters, time spent at Holt House and new chapter installations. Your magic moment may be used on the convention website, in The Daily Dart or during a meal or general session during convention. We will use as many submissions as possible, but cannot guarantee all will be used. Submit your "magic moment" memory today at www.pibetaphi.org/convention.

Welcome to Mississippi Beta

Just three years after receiving their charter in 1962, a small group of Mississippi Beta women moved into their new home on the University of Mississippi, or “Ole Miss,” campus. The Chapter House Corporation (CHC) chose to build the ranch style split-level house. The house quickly and affectionately became known around campus as “the ski lodge.”

By 1991, the chapter had grown to almost 150 women. To accommodate the growing chapter, the CHC built an addition to the house, doubling the size of the living room, dining room, chapter room and downstairs lounges. The kitchen was updated, and back porches were added off the dining room. The addition provided the chapter women with much needed space to accommodate their events and involvement in many projects.

In 2006, with the help of William Mills of Mills and Mills Architects PC of Greenville, Mississippi, the CHC decided to transform the split-level ranch style house into a stately Louisiana Acadian, two-story home. This remodel



The Mississippi Beta Chapter house, circa 1972.

also doubled the size of the kitchen and added walk-in refrigerators, freezers and extra food storage areas. Complete with new tables and chairs, this functional change made serving the chapter of 250 women much easier.

From the rocking chairs on the double front porches to the long spacious entry hall welcoming hundreds of women during recruitment, this newly renovated exterior and beautiful interior makes Mississippi Beta proud of their presence on the Ole Miss campus.

The Mississippi Beta Chapter house, circa 2011



TV Room



Formal sitting room



Entryway



Living room

It's not Just a House, it's a Home:

Living in a Chapter House Adds its Fair Share to the Pi Phi Experience

By AARYN WOOLDRIDGE, Arkansas Alpha

The day a young woman receives a bid card reading “Pi Beta Phi,” her life is changed forever. However, many people overlook the amazing impact brought to a young woman the day she calls the Pi Phi chapter house her home.

Chapter houses come in many forms; some a three-story, mansion-like estate, while others are a few suites on a dormitory floor. Size or capacity isn't the key ingredient in enhancing the Pi Phi collegiate experience. Rather, it is the indescribable bond a member gains living together with women who share a common interest.

“It wasn't until my junior year, when I moved into the Pi Phi house, that I made those lifelong friends I'd been searching for,” Texas Alpha JACKIE RAPP said. “The warm meals, constant sharing of clothes and convenience to campus are all wonderful perks. However, the best part of living at the Pi Phi house is spending endless hours bouncing between all of your best friends' rooms, watching movies until 3 a.m. and sharing major life moments with women you will keep in touch with the rest of your life.”

Chapter houses are places that bring feelings of safety, empathy, encouragement and sustainability; places where ears are always ready to listen and mouths are overflowing with advice and support.

“I love being able to walk across the hall or down the stairs knowing there is always someone awake and someone to talk to,” Arkansas Alpha BROOKS LOONEY said. “There is always someone who can relate to what is going on in your life.”

Living in a chapter house is an experience that changes you forever and gives you lessons, wisdom and relationships you will carry with you for the rest of your life. “My appreciation of my years living at Oklahoma Beta has only grown since becoming a responsible adult and living on my own,” Oklahoma Beta Alumnae Advisory Committee Chairman, LESLIE ANNE BUFORD said. “For me, living in the house was not only a bonding experience then, but continues to be one now.”

To some, a house with the letters “Pi Beta Phi” nailed above the front door is just a house. However, there are thousands of women who know that it is not that simple. A Pi Phi house is a home that has comforted the many tears hitting its floor and has been abounded by the many bursts of laughter bouncing from its ceiling. For some, it is the first place in college that felt like a home; and, for many, it was the last place they wanted to swing by before leaving college and starting a new chapter in life. ↪



For more information about collegiate housing, visit the Fraternity Housing Corporation website, www.pibetaphi.org/fhc.

Collegiate Spotlight

“I had to do something,” recounts Washington Alpha senior JEN FOX. “I hated to see such an amazing person pass away at such a young age.” In November 2008, Jen’s sister and friend, Washington Alpha CAITLIN OLSON-JOHNSON, passed away from an epileptic seizure. The tragic event occurred in the Washington Alpha Chapter house. Jen, a sophomore at the time, was heartbroken by the sudden loss of her friend, but she felt something could be done to prevent this from happening to another young person.



Washington Alpha JEN FOX

In Caitlin’s memory, Jen began a Cardiopulmonary Resuscitation (CPR) club with the University of Washington, and six Pi Phi sisters were by her side to help. Jen turned to the Seattle chapter of the American Red Cross® for proper training and the resources they would need to educate others. The Red Cross willingly offered one of its free, one-hour classes in CPR and First Aid education to Jen and worked with her to tailor the class to the specific needs of the Greek community, incorporating alcohol education and other risk-management material. Jen and her six sisters were certified in CPR in no time and ready to co-teach classes alongside the instructors.

Chapter Presidents of fellow Greek organizations were Jen’s first point of contact, and they were so receptive, she began scheduling classes at their organization’s houses. Each class started with Jen telling the story of her inspiration for starting

this initiative and the importance of being CPR-educated wherever one goes in life.

In the past year, the seven Pi Phis and the American Red Cross have educated 270 people at the University of Washington through on-campus classes and Greek community training. Jen is currently working with the Greek Life Advisors at the University of Washington to make the CPR and First Aid education class part of the mandatory training that all new members in the Greek community complete.

Jen’s dedication and drive to make a difference has not gone unnoticed. At the Seattle chapter of the American Red Cross’s annual Heros Breakfast in March, Jen received one of the Local Heroes of the Year Awards. A three-minute film was shown during the banquet about each recipient and his or her work in the community. Appropriately, Jen’s story was filmed at the Washington Alpha Chapter house, where the story began.

Jen will graduate from the University of Washington in June 2011 and plans to attend medical school, but her work with the CPR certification classes is not finished. She will continue working with the Greek community and Greek Advisors to make sure this program is sustainable, which will include regular meetings and teaching classes as necessary.

“The reason I set out to make this hope a reality is because it could have saved the life of one of my sisters,” Jen said. “You have your friends and then you have your sisters, this was something I had to do in memory and honor of one of my sisters.”



The Washington Alpha Chapter hosted a campus-wide CPR event at the chapter house last spring.

Pi Phis Supporting Their Greek Communities

CALIFORNIA

In February, California Beta members joined other campus National Panhellenic Conference (NPC) organizations on the University of California, Berkeley campus for a 5K fundraiser. The “Jog for Jill” event was held in memory of Kappa Kappa Gamma Jill Costello and raised more than \$37,000 for cancer research.



California Mu Chapter members make it a point to give their all when supporting the Greek community at Pepperdine University. This fall chapter members participated in Sigma Chi’s Derby Days, which benefited the City of Hope, a cancer research center. The women collected gently used toys and books to create gift baskets for the children at the hospital. Pictured are chapter members participating in the Derby Day’s powder puff football game. From left, VALERIE KIRK, ELIZABETH REIM, IVY VAUGHN, LUCY RYAN, JULIA CAPPER, HANNAH BERRYMAN, CHANDIS WELTON, KATHARINE WRIGHT and MACEY ISAACS.



FLORIDA

Florida Alpha’s Vice President of Communications ELIZABETH LUKAS, Vice President of Philanthropy JENNIFER SEATER-WRIGHT and NPC President MARIAMNE HARRINGTON hosted a philanthropy round table discussion for the Panhellenic community at Stetson University. Invitations were sent to each NPC group, inviting their chapter’s philanthropy officer to a discussion of how to make philanthropy events more successful and effective.



In December, the Florida Delta Chapter celebrated the holidays by teaming up with the women of Kappa Delta for a night of cookie decorating and Panhellenic bonding on the University of Florida campus. The Kappa Delta chapter hosted the party, which included decorating cookies, listening to holiday music and sharing holiday plans. More than 60 women attended the event including, from left, STEPHANIE DONOVAN, JENNIFER CALDWELL, GIA CAMPANA and MAGGIE NEILSON.



NEW MEXICO

Because of its agricultural background, New Mexico State University is focused on sustainability. This semester, the Greek community was asked to participate in the agricultural department's recycling competition. Each sorority has been paired with a sister sorority to collect the most recyclables. By working together, the NPC groups are not only getting to know each other, but they are also making connections with other parts of the university and community, which helps spread a positive outlook on Greek life. New Mexico Betas STEPHANIE CHAVEZ (left) and CATHERINE ZELKOWSKI (right) gather a batch of recyclables.



NORTH CAROLINA

The North Carolina Alpha Chapter loves the support shown between NPC groups at the University of North Carolina, Chapel Hill. A popular means of raising money for their respective philanthropies is by hosting benefit dinners. North Carolina Alpha members, BETSY PIERCE, ABBY ANDREWS, ASHLEY MCCLELLAND, NICOLE FRIES, KRISTINE LEARY and KELLY OLESIUUK braved the snow to attend a benefit dinner hosted by Alpha Delta Pi benefiting the Ronald McDonald House.



OHIO

The Ohio Eta Chapter knows sisterhood doesn't stop at their front door. The chapter women love supporting the other NPC groups as well as hosting events together on the Denison University campus. Each year, the chapter participates in various NPC-sponsored fundraisers including Kappa Alpha Theta's Cupcakes for CASA and Kappa Kappa Gamma's wiffle ball tournament, KATs with Bats. The chapter supported Delta Gamma's Anchor Splash fundraiser and chose a jungle theme for their team.



OKLAHOMA

Every year, the University of Oklahoma Panhellenic hosts a “Girls Night Out” during Recruitment work week. Oklahoma Alphas, along with the other 10 NPC sororities, enjoy desserts, music, a photo booth and a hypnotist. Oklahoma Alpha members look forward to spending time with all of the NPC groups. Pi Phi members in pink from left, JENNA SMITH, PAIGE WIEDERKEHR and CASSIE TYLER.



PENNSYLVANIA

At Lehigh University, there is a strong connection between all of the Greek groups on campus. At the end of December, the Pennsylvania Kappa Chapter partnered with Sigma Phi Epsilon Fraternity to adopt a local family for the holiday season. The group collected toys, appliances and linens for the family. The chapter also participated in a Greek community-sponsored food drive.



TEXAS

The members of Texas Alpha strive to fulfill the six core values of Pi Beta Phi in their everyday lives. Particularly important to the women of Texas Alpha, is philanthropic service to others. In support of the Zeta Tau Alpha chapter at the University of Texas, LILA JENEVEIN and LIZA YATES were two of the many chapter members who participated in the Austin, Texas, Susan G. Komen Race for the Cure®.



Race for the Cure® is a registered trademark of The Susan G. Komen Breast Cancer Foundation, Inc.

More Collegiate News

ARIZONA

The Arizona Beta Chapter at Arizona State University began working with Habitat for Humanity® to promote literacy to underprivileged children. In December, the chapter delivered its first bookcase filled with books from First Book® to a home with three young children. Arizona Betas, from left, KIRSTEN ADAMS, HAILEY ALCARAZ and Alumnae Advisory Committee member KYLEIGH MERRITT, Texas Gamma, are pictured delivering the books.



CALIFORNIA

Members of California Delta at the University of California, Los Angeles spent a December afternoon showing the men and women of the United States Armed Forces just how much they appreciate their service. The women created more than 50 cards and included a chapter photo to help spread holiday cheer.



TEXAS

Texas Delta Chapter members from Texas Christian University organized a book drive for the United Service Organizations' (USO) United Through Reading Room at the Dallas/Fort Worth International Airport. The United Through Reading Rooms offer deploying soldiers the opportunity to pick out a new children's book and video record themselves reading it as well as a special message to their children/siblings/nieces/nephews, etc. Then, the USO packages the DVD, book and toy and sends it home to that soldier's family so the children can have the deployed parent read to them whenever they want. The women visited the USO for a tour of the facility and to meet soldiers passing through.



VIRGINIA

During their winter break, five Virginia Gammas made an unforgettable service trip to Honduras. Participating in Students Helping Honduras (SHH) organization, the women worked alongside other students to improve the impoverished living conditions in Honduras; specifically, they tackled the issue of education. During their week-long visit, the girls visited four schools in need of attention. The Virginia Gamma sisters worked to improve the schoolhouse infrastructures and found it satisfying to see the physical benefits of their work. But, perhaps even more satisfying were their interactions with the children who are now enjoying these improved schools everyday. Pictured from left are Virginia Gammas KELSEY TAYLOR and ANNE DUTILH.



WASHINGTON

The women of Washington Gamma took a break from preparing for spring recruitment by participating in the National Martin Luther King Jr. Day of Service. The day of service is a campus-wide event for students at the University of Puget Sound. Chapter members spent their “day on, not their day off,” cleaning up Wapato Park in Tacoma, Washington.





PI PHI TAUGHT ME ...
"the chance to know people whose lives were very different than my own."

IN HER WORDS

MARY MCCLEARY TEXAS DELTA

IN A NUTSHELL ... TELL US ABOUT YOU AND WHAT YOU DO.

I am married to architect Jerry Sutton. We have a grown son, Stephen, who lives in Nashville, Tennessee. I am Regents Professor Emeritus at Stephen F. Austin State University in Nacogdoches, Texas, where I taught studio art classes for 30 years. I am fortunate to now be a full-time artist and have recently been named Texas Artist of the Year by the Art League of Houston. You can see my work at www.marymccleary.com.

Left Brained Right Brained

Heels Flats

iPhone Blackberry

a.m. coffee a.m. soda

Hours a week 40+ 50+ 60+

FAVORITE QUOTE

"While we do not look at the things which are seen but at the things which are not seen. For the things which are seen are temporary but the things that are not seen are eternal."
 — 2 Corinthians 4:18

▶ WHAT IS YOUR FAVORITE PI PHI MEMORY?

Recruitment — costumes, show tunes, new friends — what more could you ask?

▶ LOOKING AT ME, NO ONE WOULD GUESS ...

I was once in a conga line in Ford's Theatre under the balcony where Lincoln was shot.

▶ WHAT IS YOUR FAVORITE RAINY DAY ACTIVITY?

Reading.

▶ BEST DAY EVER

When I am with my Pi Phi friends.

▶ BEST ADVICE YOU'VE EVER RECEIVED

Strive to make ambitious work.

▶ WHY I LOVE MY JOB

I can read about and explore any subject, knowing there's a chance it might become the subject of one of my collages.

▶ WHAT PERSON DO YOU ADMIRE THE MOST?

The artists and craftsmen, some well-known and many anonymous, who made the work we see in museums.

ADVICE FOR UP-AND-COMING PROFESSIONAL WOMEN

WORK HARD BUT KEEP YOUR PRIORITIES STRAIGHT.

SAFETY CONCERNS IN A SOCIAL WORLD



Social media has become a vital source of relationship building and networking. People, including Pi Phis, are connecting instantly in amazing ways. But how does a young woman not allow this “sign of the times” to influence her basic principles of forming or maintaining relationships? How do members make the most of their online experiences while protecting what is important to us as an organization, as members and even as women?

For many years, Pi Beta Phi has prided itself on its dedication and commitment to values. Through the framework of its member education program, *Leading with Values*[®], Pi Phi sets the stage for understanding and living the values of the organization. This values system, set forth with a rich history are meant to provide all members meaningful opportunities and support. This seems simple enough, but how do these experiences translate to a new world of technological times where messages are instant and news is constant.

Currently, more than 81 million females in America use Facebook[®], outnumbering male users by nearly 16 million.

As a relationship-based organization, this speaks volumes about the female desire for communication and personal connection. However, with that openness, females must play it safe when it comes to social media.

California Eta MICHELLE MURRELL WILLBANKS, Pi Beta Phi Fraternity Internal Legal Counsel, reminds members it is important online media receive special consideration.

“Be smart and use sound judgment and common sense in what you post, where and to whom,” Michelle said. “You may think you are sending to family or friends, but it can spread virally without your knowledge.”

Leading with Values[®] is a registered trademark of Pi Beta Phi Fraternity.



PI PHI'S SOCIAL MEDIA POLICY

In September, the Fraternity published its social media policy for all collegiate chapters, alumnae organizations and members. These guidelines were created to encourage members to help the Fraternity uphold its mission and realize its vision. It is intended to outline how members should adhere to the organization's values when engaging in social media as well as helping members' personal pages align with Pi Phi's media standards.

“Both Pi Phi values and your personal values should be demonstrated in any online social media space,” Michelle said. “Pi Beta Phi expects its members to be responsible, be respectful and reflect our values when utilizing all forms of social media. When you publish online, you are responsible for your actions. In addition, you can potentially impact your chapter, the Fraternity and others.”



SAFETY FIRST

The January 2011 issue of *Fraternal Law*, a fraternity law periodical, discussed the social media challenges faced by fraternal organizations. This issue included the MSNBC coverage of a rash of cyber stalking cases affecting numerous sororities and campuses. In these instances, contact is made using fake Facebook accounts and over a series of attempts to contact, more personal information is requested under the guise of the recruitment process. Eventually, the requests turn explicit, and the stalker threatens to blackmail the subject to seek even more explicit material from them. Organizations, like Pi Phi, can help ensure members are not victimized by this behavior.

“By implementing the Fraternity’s social media policy you are providing an important tool in fighting these attacks and also gaining an opportunity to avoid legal exposure in a wide range of areas,” Michelle said.

MANAGING THE SHADY SIDE OF SOCIAL MEDIA

When visiting a social media site, it is important to read the website’s policies. They can be in the form of: Privacy Policies, Terms of Use, Terms of Service or User Agreements. These policies not only set forth what your obligations are, but also tell how the user’s information may be used going forward. For example, one popular site states by using the site, you make your posts available to the rest of the world and allow others to do so. This means they can make your content available to other individuals, organizations or corporations for publication or distribution to other media services. They may also modify or make changes to the user’s content.


Many sites also use your actions to research you (i.e. if you send gifts, contact other users, your ‘likes’ and what events you attend.) Various stories and articles may be found online reporting how companies are recognizing the treasure trove

of data sitting on social networks and how they are beginning to experiment with it. A few examples include how some credit card companies and financial service companies are developing algorithms based on an account applicant's online friends, the theory being that deadbeats tend to associate with one another. Other stories focus on shady affiliate marketers weaseling their way onto a member's account and then sending sales pitches and product recommendations to their networks, supposedly from them.

And now companies and "friends" will not only be able to know where you go on the web, they are able to know literally where you are! "Geolocation" sites allow people to report on their physical location. The purpose of these sites was originally to allow users to connect with others in their area, but one can easily see how this information may be used in harmful or negative ways if in the wrong hands.

Yet another security concern with social media is the fact that you can be tracked by GPS on your mobile phone. This becomes a safety concern when users upload photos from their phones to sites like Facebook. These photos use geotagging, which is the process of adding geographical identification to various media. Certain image formats allow for geographical information to be embedded within the photo and then read by picture viewing software, showing the exact location of where the picture was taken. Tagging photos with the exact location over the web could allow random people to track an individual's physical location and correlate it with other information. There are of course advantages to this data should you find yourself in trouble, rescuers would be able to locate you. At the same time, criminals could target you, your house and the company you are keeping at any given time. Since most smartphones automatically display this data, it takes a little more effort on the user's part to protect their privacy, but simply disabling the geotagging feature would prevent this from happening.

THE BOTTOM LINE

Once information is published online, it is permanent, and your content may be used for other purposes than you had originally intended. "When it comes to participation in the online social media world, the best rule of thumb is if you have any doubt, don't type it," Michelle concluded. 

Tips from Pi Phi's Social Media Policy

- As a member of Pi Beta Phi, what you post directly reflects the Fraternity.
- Be respectful of members, parents and other chapters or alumnae organizations when you post.
- Regardless of how carefully you set your privacy settings, your posts can still be accessible to those who you thought could not.
- Keep Pi Phi sacred. Don't post any details you wouldn't want anyone else but Pi Phis knowing.
- Evaluate the goals of your posts prior to posting. What are you hoping to achieve by your statement or photos?
- Remember the values of the organization as well as your own, and use them to guide your online media space.
- Have fun, but be smart.

For more information, check out Pi Beta Phi's social media policy, located in the Resource Library.

Educating at Work, Educating in Pi Phi

Indiana Gamma HANNAH MUEHLBAUER is a dedicated and enthusiastic teacher; she brings those same qualities to her role as Foundation Ambassador for Collegiate Region Four.

After her initiation in 2006, Hannah was ready and willing to step forward and be a leader in her chapter at Butler University. But, finances were a challenge. She was already working four part-time jobs to fund her education, but Pi Beta Phi Foundation was there to help. During the 2007–2008 academic year, Hannah was awarded the Betty Blades Lofton Scholarship.

“Receiving this scholarship let me quit two of my jobs, which allowed me the time to serve my chapter as Chapter President,” Hannah said. Following her term as Chapter President, Hannah also served as the Policy and Standards Board Chairman.

Now a teacher in Charlotte, North Carolina, with Teach for America®, Hannah continues to give back to Pi Beta Phi: first as a member of her local alumnae club, then as Alumnae Advisory Committee (AAC) member for North Carolina Gamma and now, North Carolina Delta.

It was during her role as AAC Advisor for North Carolina Gamma when Hannah attended the Pi Beta Phi Leadership Academy in St. Louis during spring 2010. There, the Foundation announced it was forming a Foundation Ambassadors Council. Once again, Hannah stepped forward to volunteer.

“The Foundation Ambassadors Council is a great position for me,” Hannah said. “I believe it’s important for all Pi Phis to know and understand the Foundation. It’s because of my undergraduate experience I can share directly just how important the Foundation is to collegians.”

Hannah credits both her scholarship and the leadership programming the Foundation supported as important components of her development as a Pi Phi leader and as a teacher with Teach for America. “My goal is for every collegian to know all the great things Pi Phi can do for them in and after college.” Hannah said. “It’s why I support the Fraternity by paying my dues and volunteering on AAC, and it’s why I support the Foundation with my donations and volunteering as a Foundation Ambassador.”

To find the Foundation Ambassador in your region (collegiate or alumnae), visit www.pibetaphifoundation.org.



Indiana Gamma HANNAH MUEHLBAUER is the Foundation Ambassador for Collegiate Region Four.

Thank you Collegians

Chapter support reaches an all-time record in 2010

Collegiate chapters stepped forward in a huge way with the 2008 Campaign for Pi Beta Phi Foundation, when they raised \$682,000, some with outright gifts and some with pledges they are still completing today. They did it again in 2009 with a grand total of \$230,598 in gifts to the Foundation. We were expecting great things from Pi Phi chapters in 2010, and they came through again: \$434,579 in gifts — an average of \$30.06 per member!

The Foundation's Top Ten for 2010 is determined by total giving and includes Friendship Fund gifts along with gifts for scholarships, Emma Harper Turner Fund, Literacy Fund and more. We will be celebrating with these chapters and their AAC representative at a special reception at the 2011 Convention in Orlando, Florida. Congratulations on being leaders in Pi Beta Phi and thank you!

PI BETA PHI FOUNDATION TOP TEN OVERALL COLLEGIATE SUPPORTERS

1. California Beta	\$507.46 per member
2. Arkansas Alpha	\$259.73
3. Texas Delta	\$75.29
4. Florida Delta	\$74.99
5. Massachusetts Gamma	\$73.45
6. Arizona Beta	\$60.91
7. California Kappa	\$56.70
8. Alabama Alpha	\$56.21
9. Mississippi Alpha	\$52.69
10. California Gamma	\$52.08

FRIENDSHIP FUND SUPPORT

A big part of the reason why chapter support was so incredible in 2010 was Friendship Fund gifts: a grand total of \$301,772 — a 66 percent increase over 2009 Friendship Fund gifts. Friendship Fund gifts allow the Foundation to meet every need — from scholarships to financial assistance to leadership programming to literacy efforts to Holt House, Friendship Fund dollars are at work in Pi Phi.

PI BETA PHI FOUNDATION TOP TEN COLLEGIATE FRIENDSHIP FUND SUPPORTERS

1. Massachusetts Gamma	\$73.45 per member
2. Florida Delta	\$65.13
3. Arizona Beta	\$58.64
4. California Kappa	\$56.70
5. Alabama Alpha	\$56.21
6. Mississippi Alpha	\$52.69
7. California Gamma	\$52.08
8. Louisiana Beta	\$45.24
9. Oregon Alpha	\$43.53
10. California Theta	\$42.33



Arkansas Alphas working on their Family Weekend 5K Run fundraiser banner. Proceeds benefit Pi Beta Phi Foundation, First Book and local philanthropic efforts.

*SHARE THE MAGIC OF
SISTERHOOD AND MAKE
YOUR CONVENTION TRIBUTE
GIFTS EARLY!*

Visit the Foundation website, www.pibetaphifoundation.org, and download the Convention Giving Form from the News page or request the form by e-mailing Donna Toms, donna@pibetaphi.org.

Alumnae Spotlight

Arkansas Alpha PAT ROSE CARLTON remembers the day she had to take her mother's high heels away. Pat's mother, Louise Rose, was suffering from Alzheimer's Disease and was moving into an assisted living facility.

It was while caring for her ailing mother Pat received a call asking her to be the Chairman of the 2009 Bolo Bash Luncheon for Baptist Hospital in Little Rock, Arkansas. The luncheon was being held to raise funds for the new Ginny and Bob Shell Alzheimer's Center, the only free-standing center in Arkansas devoted to people with Alzheimer's disease. Pat had seen the effects of this horrible disease firsthand and knew a place focused on the needs of Alzheimer's patients would make a huge difference in the lives of many Arkansans.

As the Bolo Bash Luncheon Committee began discussing ways to raise awareness for their cause, Pat's story of taking her mother's high heels sent a clear message representing what these people had to give up.

"My mother had to give up her high heels," Pat said. "But for others, it's giving up their car keys, briefcase or computers." In honor of Louise Rose, the committee chose high heels as the theme of the luncheon, symbolizing what patients have to give up when they move into an assisted living facility.

In April 2009, the luncheon was held and \$1 million dollars was raised. "When we started raising money for the Center, people were ready for it because there was a need for this sort of facility in Arkansas," Pat said.

After the success of the luncheon, Pat decided to take part in the fundraising committee for the Center. Fundraising efforts were in full swing when the economy was at its worst, but that did not stop people from supporting it. With Pat on board, the committee made great strides in raising the necessary funds.



Arkansas Alpha PAT ROSE CARLTON

Construction began late in the summer of 2009, and the Center opened in the fall of 2010. Pat attended the opening of the Center, where the enclosed center courtyard, The Rose Garden, was named for her mother. As Pat sat in her chair waiting for the ceremony to start, she saw a line of women coming toward her, the first of which was her pledge sister and close friend who lives in Dallas. Pat began to wonder what was happening, but as the group moved closer, she realized eight of her pledge sisters had come to support her. "When I saw them, I broke down, because I knew they were there just for me," Pat said. "It meant so much because they knew and loved my mother, too."

It is that Pi Phi bond, the invaluable sisterhood and character building, that gave Pat the confidence to take on a project like this for the Alzheimer's Center. "Pi Phi gave me confidence in myself," Pat said. "I learned so much in those years living and working with this group of women."

With her Chairman and fundraising roles behind her, Pat continues to support Alzheimer's any way she can to honor her mother. She participates in the annual Arkansas Alzheimer's Walk with her mother's caregivers, a team which was organized by one of the caregivers who grew especially close with her mother. Although Pat's once "vibrant and beautiful" mother did not live to benefit from the Center, she must be proud of what her angel daughter has done to improve the care of Alzheimer's patients who came after her.

Photo courtesy of Karen Seagrave, Arkansas Democrat Gazette.

ALABAMA

In December, the Birmingham, Alabama, Alumnae Club held its annual Christmas party. The women enjoyed breakfast, which was prepared by club officers, and a gift exchange. From left, Mississippi Alpha YVETTE ABADIE, Alabama Alphas MARY ANN BAGLEY MCCOLLUM and CATHY SCHAUER, Alabama Betas JAMIE HATCHETT COLVIN and KAREN DOTY FAIRFAX, Arkansas Beta ANGELA ALEXANDER LUMPKIN, Kentucky Alpha ANNEMARIE LONG WILSON, Alabama Beta STEPHANIE REDMON BRUNO and Alumnae Region Two Membership Specialist MARILYN SMITH ROWELL, Alabama Alpha.



ALBERTA

In 2010, the Calgary, Alberta, Alumnae Club honored Diamond Arrow MARGARET FREEMAN MITCHELTREE, Alberta Alpha, by donating a bench in her name at Holt House. In December, club members arranged a special presentation frame, which included a photograph of the bench. From left, Alberta Alphas HELEN STEEVES JULL, Margaret and ELAINE KING MONTGOMERY.



CALIFORNIA

Members of the San Francisco Alumnae Club served on the 2010 Gala for the historic Conservatory of Flowers in Golden Gate Park planning committee. The evening raised more than \$50,000 for the Conservatory's Youth Education Program. From left, Event Planning/Program Coordinator MORGAN DAVIS, Missouri Beta; Whistlestop Coordinator BETTY REED PACKARD VORIS, Indiana Alpha; Development Director JANE KIRKMAN SCURICH, Tennessee Alpha; and Honorary Gala Chair ANN LITTLE SIMON, Indiana Delta.



COLORADO

Members of the Aurora, Colorado, Alumnae Club hosted a Golden Arrow Tea to honor seven of its members. From left, Colorado Alpha GINGER ROE ANDERSON, North Carolina Beta ANNE SWANY HARRITY, Massachusetts Beta JANE DAVENPORT WETMORE, Colorado Gamma JOAN BALLA WEAVER, Kansas Betas MARY ALICE HUMES JACKSON and MARY BLISS CELLA and Montana Alpha MARGIE DAVIS BARNES.



COLORADO

The Colorado Springs, Colorado, Alumnae Club was invited by the Colorado Epsilon Chapter to help welcome its new members at an afternoon tea. The chapter took the opportunity to thank the alumnae for their support. From back left, Colorado Epsilon NATALIE ORTIZ, Florida Gamma ALISON HENNIG MOORE, Colorado Epsilon KASIA DABROWSKI and Oklahoma Beta BARBARA HOPKINS LITCHFIELD. Front left, Colorado Epsilon RACHEL WALTERS, Alabama Alpha BETTY DAVIS FREUDENBURG and Colorado Epsilon DANIELLE GAFFNEY.



Members of the San Juan, Colorado, Pocket gathered in December for a luncheon and an angel gift exchange. The women also collected food and household items for a women's sober living facility. Back left, Oregon Beta CAROLE MUNROE HOWARD, Colorado Alpha MARCIA FARLEY THOMAS, Oklahoma Beta MARIBETH GARNETT HILL, Colorado Beta MARY BUCKLEY BAILLY and Illinois Alpha MELISSA MELVIN MCDONALD. Front left, Colorado Alpha LISA GAMEL SCOTT, Pennsylvania Beta LYNN DEVAUL CONSTAN, Missouri Alpha MARILYN KELSO CHIPPS and Colorado Gamma DONNA KRUEGER GREGORY.



CONNECTICUT

In December, the Manchester Area, Connecticut, Alumnae Club held its annual angel exchange. Each year, club members look forward to receiving new angels for their collections and celebrating being Pi Phis.



FLORIDA

For the seventh year in a row, the St. Petersburg, Florida, Alumnae Club participated in the Susan G. Komen Race for the Cure®. Through the club's Pi Pink Party pep rally and support from Pi Phi friends, the women raised almost \$400 to help find a cure for breast cancer.



ILLINOIS

Illinois Eta CHARLOTTE BEESLEY MOOREHEAD (back row, third from left) hosted the Chicago South Suburban Pocket year-end holiday brunch in December.

Charlotte was a founding member of the Chicago South Suburban Alumnae Club in 1954.



KANSAS

Lawrence, Kansas, Alumnae Club members celebrated the dedication of the Jean Shepherd room at Court Appointed Special Advocates (CASA) in Douglas County. Judge JEAN SHEPHERD, Kansas Alpha, helped found CASA, which provides children with volunteer advocates for them in court. From left, Kansas Beta JESSIE DAVIS, Jean and Kansas Alphas AMANDA CLARK and KATY IBSEN.



NEW YORK

Members of the New York City Alumnae Club are proving the connection to Pi Beta Phi doesn't end with graduation ... it only begins. More than 40 women attended the club's September kickoff meeting. Members have targeted their efforts on philanthropy, sisterhood and mentoring the women of the New York Eta Chapter at New York University. Many club members also serve on the New York Eta Alumnae Advisory Committee. The club hosts a variety of events throughout the year including apple picking, participating in New York Cares Day and organizing a book club. New York City Alumnae Club Executive Board, from left, Ohio Etas STEPHANIE HARGIS and BETHANY CLEVENSTINE, Indiana Beta ALYSSA MURPHY, Maine Alpha KYUNHEA KWON, Virginia Zeta RACHEL FOSTER, Illinois Epsilon BRIANNA KAUFFMAN-EPSTEIN and California Mu MONIKA MARTINEZ.



OKLAHOMA

In November, Tulsa, Stillwater, Bartlesville and Sapulpa, Oklahoma, Alumnae Club members were treated to an evening book signing event with California Gamma REE SMITH DRUMMOND, aka *The Pioneer Woman*. Ree is well known for her popular blog about life as a rancher's wife and the joys of preparing meals and raising a family of four children. Her popular cookbook, "The Pioneer Woman Cooks," is a best-seller and the movie rights to her recently released new book, "Black Heels To Wagon Wheels," has been optioned. Former Tulsa Mayor KATHY TAYLOR, Oklahoma Alpha, and her daughter, Oklahoma Alpha ELIZABETH FRAME ELLISON, hosted the event in Kathy's home along with Tulsa Alumnae Club President CATHRYN BRUNS RENDER, Oklahoma Beta and Alumnae Region Four Director MARLA NEELLY WULF, Kansas Beta.



WASHINGTON DC

This December, Nation's Capital Alumnae Club couldn't resist visiting the National Christmas Tree. The tradition of the National Tree dates back to 1923. The women enjoyed the fabulous fir and then found each of their states' trees. These state trees are decorated with unique ornaments symbolizing the history of their home state. After being swept up with holiday spirit, the ladies treated themselves to hot chocolate at the historic Old Ebbitt Grill. Back left, Virginia Zeta JESSICA OPALSKI, Florida Beta LAURI TAMNEY, Virginia Zeta AMY SHUART, Pennsylvania Theta and Director Membership TINA RIVARD and New Mexico Alpha AMANDA SIMS. Front left, Kentucky Beta SUZANNE TUPPER and Wisconsin Alpha MELISSA LEMBKE.



Preserving our History: Holt House Library Project

In recent years, much needed updates and improvements have been made to Holt House. In 2008, funding for new landscaping, creation of a parking lot and a complete renovation of the kitchen and first floor powder room was approved by Grand Council. Later that year, Pi Beta Phi Foundation approved grants to fund lighting for the new parking lot, a new furnace and new air conditioning units.

During the 2009 Holt House Committee annual meeting, it was determined the next area in need of a facelift was the library. The library, which houses more than 200 books written by or about Pi Phis, was once part of the curator's living quarters. After it was determined the Holt House Curator would no longer live in the home, the room was converted into a library but was noticeably different than the rest of the home.

"Throughout the years, the Holt House Committee has worked tirelessly to keep Holt House as true to the time period of our founding as possible," said Holt House Committee Chairman JERI PRICE SIMAK, Illinois Theta. "The library is one of the last areas of the home in need of a facelift to make it both period compliant and functional for use today."

The committee turned to the Fraternity and the Foundation for help. In response, a joint plea from Grand President MARY LOY TATUM, Oklahoma Beta, and Foundation Trustee President PEGGY WILSON LAWRENCE, Tennessee Gamma, will be sent to all alumnae organizations. The goal of the project is to secure \$10,000 in donations from alumnae organizations across the country in support of the Holt House Library Project.

Alumnae organizations will be offered two incentives for participating in the project and for their annual contribution.

- Alumnae organizations renewing their past year's required Fraternity gift to Holt House and also making a voluntary gift of any amount to the Library Project will be listed in a donation book to be displayed at the library.
- Alumnae organizations renewing their past year's Fraternity gift to Holt House and making a gift of \$100 or more (for large clubs) or \$50 or more (for small clubs, circles and pockets) to the special Library Project will be listed on a plaque to be displayed at Holt House and will receive special recognition at convention and in an upcoming issue of *The Arrow*.

The Library Project campaign is not limited to alumnae organizations. Individuals and chapters who wish to make a donation should contact Pi Beta Phi Foundation Executive Director Teri Chadwick, teri@pibetaphi.org.



The current library at Holt House.

Why Your Gift to Holt House is Important

More than 140 years ago, a dozen women gathered in the upstairs bedroom of Jacob Holt's home and started the women's fraternity movement. Since acquiring Holt House in 1940, the preservation of our founding home, Holt House, has been a priority to the Fraternity.

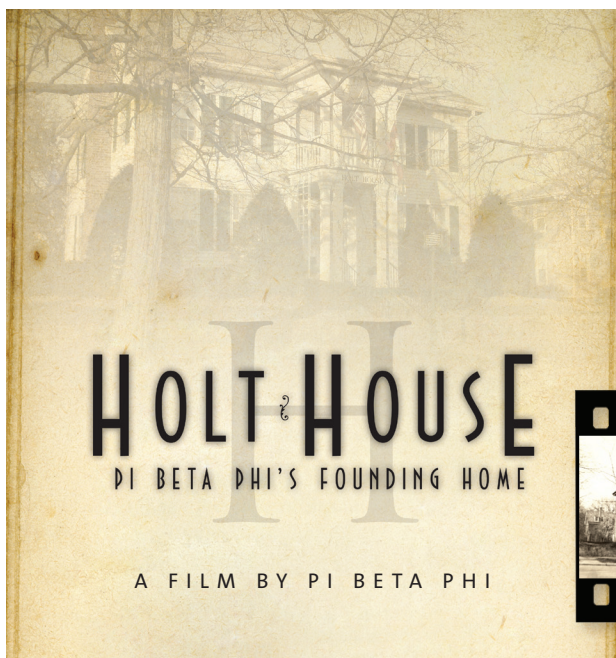
Not only is Holt House visited and utilized by Pi Phis for meetings, initiations and ceremonies, but it also has great significance to the greater Monmouth community. Residents often rent Holt House for small weddings, receptions, bridal and baby showers, meetings and social gatherings. Monmouth College Open Houses are also held at Holt House.

How to Give to Holt House

Contributions to Holt House from chapters, alumnae organizations and individual members are essential for the maintenance and operating costs associated with Holt House. Individual Fraternity members and chapters are encouraged to make yearly donations to Holt House. Alumnae organizations are required to make donations to Holt House to be considered for alumnae awards.

Beginning July 1, collegiate chapters, alumnae organizations and individuals should make all Holt House contributions and donations through the Foundation. An FT-1 form should accompany chapter contributions. An FT-2 form should accompany alumnae organization contributions. Both forms are available by logging into eSisters and visiting the Resource Library. Donations marked "Wish List" will be used to acquire items listed on the Holt House Wish List. Contributions "In Honor" or "In Memory" of a loved one should also be sent to the Foundation accompanied with a Remembering Holt House form. This form is also available in the Resource Library, by clicking on Alumnae Organizations and then Alumnae Organization Treasurer. ↪

Please note: Contributions made to Holt House through Pi Beta Phi Foundation are tax deductible.



The Holt House Committee and Headquarters are proud to announce the release of a new Holt House DVD just in time for your Founders' Day celebration.

Chapters and alumnae organizations received DVDs in early April. The video is also available for download by visiting the Fraternity's YouTube page, www.youtube.com/pibetaphihq.



Reunions & Anniversaries



Top: Oklahoma Alpha Centennial Steering Committee Members RAEGAN ROGERS, BETTE BURKE MACKELLAR, LAURA BUCKLEY HOOD, KRIS REEVES FRANKFURT, CLAIRE PETERSON and LINDA RAY RODGERS at the Centennial Luncheon.

Middle: Oklahoma Alpha Centennial Ball attendees from left, SARA SCARBROUGH, KRISTEN WEIDNER and MARY ANN JOHNSON OSKO.

Bottom: From left, Collegiate Region Six Financial/Housing Specialist LISA PITHAN SABATINO, Oklahoma Alpha; Alumnae Region Four Programming Specialist AUDREY MILLER PENNING, Arkansas Alpha; Centennial Chair LINDA RAY RODGERS, Oklahoma Alpha; and Grand President MARY LOY TATUM, Oklahoma Beta, at the Centennial Luncheon.

“The Girls are Back in Town”

More than 750 Pi Phis from 30 states and one European country, gathered at the University of Oklahoma in Norman, Oklahoma, for Oklahoma Alpha’s Centennial celebration.

“The celebration gave Oklahoma Alphas of all ages a chance to reconnect with one another and to celebrate their sisterhood,” Centennial Chairman LINDA RAY RODGERS said. “Alumnae had the opportunity to step back in time, remembering Pi Phi songs, friends, experiences and college days; it gave the collegians an opportunity to showcase the current sisterhood and their accomplishments.”

Special guest, Grand President MARY LOY TATUM, Oklahoma Beta, addressed the group during the luncheon. “Everyone is here for three words — Pi Beta Phi,” Mary said. “It has brought us friendship in all phases of our lives. It has provided leadership opportunities and allowed us to go beyond our own concerns and serve others. It has helped our daughters to become our sisters, too. The benefits of being a Pi Phi continue throughout our lives.”

In addition to celebrating the centennial, the committee wanted to bring awareness to Pi Phi’s philanthropic efforts to promote literacy. Centennial participants decorated bookplates and donated more than 1,400 new children’s books, which will be distributed to children in need across Oklahoma through First Book®. The committee also hosted a centennial donor campaign for alumnae, which raised \$50,000 for the Oklahoma Alpha Chapter House Corporation.

The celebration continued into Saturday evening with the Centennial Ball with more than 925 attendees. Guests enjoyed dinner and dancing to local band Dave and The Wavetones.

“Our goals were to recognize Oklahoma Alpha’s incredible history and place on the University of Oklahoma campus,” said Centennial Committee Co-Chairman LAURA BUCKLEY HOOD. “We wanted to give both the alumnae and collegians a chance to celebrate together and to build excitement and interest in what lies ahead for Oklahoma Alpha.”

OHIO

Several Ohio Zetas gathered to celebrate their 50th birthdays in Key Largo, Florida.

The women, who hadn't seen each other for more than 10 years, easily picked up where they left off and enjoyed a weekend celebration together. From left, TRACY FLANIGAN MCVEY, LAUREN LOFLIN BUXTON, SUE SUELTER KILEY, KIM O'BRIEN, ABBY TURNER HOBBS, MARY DALTON MANCHESTER and SUSAN OTTO BAUMGARDNER.



OREGON

In October, the Oregon Alpha pledge class of 1955–1956 held their first, long overdue and greatly anticipated reunion. The women filled three days together with great food, many laughs and numerous assurances they hadn't changed a bit. From left, MARY HELEN WILLIAMS SOCOLOFSKY, MARILYN LURSEN POWERS, DARLENE, LELAND LARSON, MERIDE BROLLIAR HUTCHINSON and PAT WHITE ROBINSON.



OREGON

While attending their 50-year class reunion, three Oregon Alphas attended the University of Oregon's homecoming football game against the University of Washington. The women also enjoyed visiting the Oregon Alpha Chapter house and renewing their Pi Phi bonds. From left, ARDYS URBIGKEIT REVERMAN, J'ANNY THACKER NELSON and LINDA PETERSON STEEN.



Remember

By: FRAN DESIMONE BECQUE, New York Alpha
Fraternity Archivist and Historian

Pi Phi Conventions

The “Magic of Sisterhood” that started in the southwest bedroom of Major Holt’s House on April 28, 1867, will continue this summer at the 68th Biennial Convention in Orlando, Florida. Though times have changed, Pi Beta Phi conventions have always been a time for fun and sisterhood.

Conventions have been a part of Pi Phi since August 1867, when most of the founders gathered at Fannie Thomson’s home in Oquawka, Illinois, and made plans for their women’s fraternity.

Until the 1890s, conventions took place whenever it was possible, usually in the fall. Since about 1900, they have taken place in June and/or July. The biggest exception to this was the New Orleans Convention, which began on December 30, 1907, and ended on January 3, 1908.

Early conventions took place on or near college campuses. In the early 1900s, hotels became the preferred locales. Pasadena’s Huntington Hotel hosted three conventions — 1929, 1940 and 1956. The 1936 Chicago Convention took place at the Edgewater Beach Hotel. It was also the site of the 1967 Centennial Convention and included a trip to Holt House.

Until 1940, one or more of the founders tried to attend conventions. In 1897, EMMA BROWNLEE KILGORE was a special convention guest. She delighted in telling about the Fraternity’s early days. Delegates at the 1931 Asbury Park Convention received a note when they checked in:

“No convention would be complete
Were there no Founders for us to greet
But there would be too great a fuss
If they tried to meet each one of us
This little note will tell you when
You are to be hostess to one of them
To each is assigned a part of a day
We hope this schedule suits you O.K.”

D.C. Alpha was assigned Wednesday lunch with FANNIE WHITENACK LIBBEY, according to the note found in a scrapbook donated to the archives.

The meeting room at the 1925 Lake of Bays Convention overlooked the lake and a convention rule stated, “No

motor boating during sessions.” Those who wanted to canoe had to present a certificate of ability or take a paddling test to determine skill. The 1927 Breezy Point Convention included a bridge tournament. A Swimming Day with competitive activities was once a convention mainstay. The prize for the 50-yard freestyle at the 1929 Pasadena Convention was a “gorgeous Perfection knit, one-piece bathing suit.”

For many years, chapters and clubs gave favors to attendees. These included Sunkist® oranges from California Gamma, cactus candy from Arizona Alpha and maple sugar tidbits from Vermont Alpha.

In 1925, Grand Council member ANNE STUART, Nebraska Beta, was awarded the prize for attending more conventions than anyone present. Although a prize is no longer given, opening night includes a convention count off. In the 1980s, past Grand Council members Illinois Alpha EVELYN PETERS KYLE, Kansas Alpha MARIANNE REID WILD and Kentucky Alpha HELEN ANDERSON LEWIS would keep standing until Helen, who attended her first convention in 1927, was standing alone. Today, it is past Grand President SARAH RUTH “SIS” MULLIS, South Carolina Alpha, who stands the longest. She has attended every convention since 1962, shortly after her initiation.

At the 1892 Lawrence Convention, 130 guests attended the final banquet. It began at 11 p.m. and included smelt and veal croquettes. The 1895 Lawrence Convention featured escalloped oysters and cold boiled tongue. Breakfast choices at the 1936 Chicago Convention were boiled salt mackerel and calf’s liver with bacon as well as stewed prunes; dinner included broiled calf sweetbreads with mushrooms.

Be a part of Pi Phi’s history. Join in the “Magic of Sisterhood” and make your convention reservations today. ↪



A



Like us on Facebook!



B



C



D

E



F



G

SPRING FOUNDERS' DAY MOTHER'S DAY GRADUATION

A	X137	Greek Letter Motif T-shirt Appliquéd letters on a Gildan® cotton T-shirt.	\$25	G	PX751	Multi-Charm Necklace Silver tone.	\$15
B	X916	Graduation Sash Embroidered.	\$30	<i>(Opposite page)</i>			
C	PX914	Graduation Cords	\$12.50	H	MD400	Legacy Badge Pearl, 10k gold.	\$150
D	X606	"Ring Ching ... Dinner is Served" Cookbook Originally \$24.95, on special through Mother's Day.	\$19.95	I	MD201	Crown Pearl Badge 10k gold.	\$200
E	X608	"Angel Sweets and Arrow Treats" Dessert Cookbook Originally \$19.95, on special through Mother's Day.	\$14.95	J	MD910	Crest Guard 10k gold.	\$50
F	X778	Vinyard Vines® Tote	\$ 95	K	MD304	Pearl and Sapphire Badge 10k gold.	\$200

To view our complete line, visit www.pibetaphi.org/store.

Pi Phi Express



L	Badge Holders Create a unique piece of jewelry especially for your badge. Each badge holder is custom-made to fit your badge. Call Pi Phi Express for details. Prices will vary depending on design.			
M	MD202 Pearl Bracelet with Charm 8mm simulated pearls, sterling silver.	\$70	Q	MD861 Golden Arrow Pin 50-year recognition pin, gold gloss. \$20
N	PMD198 Carnation Ring Whole sizes only. Cubic zirconias, set in sterling silver.	\$35	R	MD862 Golden Arrow Pin 50-year recognition pin, 10k gold. \$175
O	PMD199 Carnation Earrings Post Studs. Cubic zirconias set in sterling silver.	\$35	S	MD850 Golden Arrow Pendant 50-year recognition pendant, gold gloss. \$20
P	PMD225 Carnation Necklace Cubic zirconias set in sterling silver.	\$30	T	MD851 Golden Arrow Pendant 50-year recognition pendant, 10k gold. \$175
			U	MD852 Diamond Anniversary Pin 75-year recognition pin, cubic zirconia, gold gloss. \$30
			V	MD901 Silver Arrow Society Pin 25-year recognition pin, sterling silver. \$35
			W	MD801 Mother's Pin Pearl, gold gloss. \$40

In Memoriam

Because of space constraints, *The Arrow* will only print the entirety of an obituary for a former Grand President. If you know a sister who has died, please inform Headquarters. Only those names accompanied by a published notice will be listed in *The Arrow*. Published notices include a newspaper obituary, a funeral program/prayer card, a listing in a college/university alumnae newsletter or obituaries from newspaper websites. Attach the article and e-mail to Alison Bauer, alison@pibetaphi.org, or mail to Pi Beta Phi Headquarters.

In Memoriam lists the name, initiation year, and month and year of each member who has died.

Alabama Alpha

Jean Keller Heard
1943; January 2011

Arizona Alpha

Eleanor Walker Fowble
1954; August 2010
Patricia Newmeyer Kelly
1959; November 2010

Arkansas Alpha

Dorothy Bassett Edwards
1940; December 2010
Mary Ann Davenport Ford
1958; June 2010

California Beta

Janet Curran Dittoe
1939; December 2010
Carol Christensen Platt
1942; February 2010

California Delta

Ruth "Kim" Murray Backer
1948; October 2010
Shirley Sibley Pumphrey
1942; October 2010

California Gamma

Mary Jo Darcey Chambers
1954; September 2010
Paula Hinckley Ettinger
1948; December 2010
Diane Kilian Toland
1968; December 2010

California Zeta

Susan Ames O'Leary
1960; November 2010

Colorado Alpha

Virginia Bradt Fullerton
1940; November 2010

Barbara Salfisberg
1957; November 2010

Colorado Beta

Joyce Dexter Tieman
1954; December 2009

Colorado Gamma

Nancy Kanies Golbeck
1971; July 2010

Connecticut Alpha

Marjorie Fields Bruno
1948; January 2011
Grace Fyler Farnsworth
1948; August 2010

D.C. Alpha

Tahmineh Irani Parsons
1937; September 2010

Florida Alpha

Joy St. Onge King Gartland
1941; September 2010
Janet Williamson Johnson
1953; July 2010
Mary Mobley Mixner
1941; January 2011

Idaho Alpha

Barbara Collins Rosenberry
1945; December 2010

Illinois Alpha

Rebecca Jesukaitis Kalinka
1997; April 2010

Illinois Beta

Elva Tucker Miller
1927; January 2010

Illinois Epsilon

Daisy "Judy" Hughes D'Ambrosio
1940; January 2011

Illinois Eta

Margaret Hall Beaumont
1937; November 2010

Illinois Theta

Marion Putnam Bohner
1951; October 2010

Illinois Zeta

Phyllis Hansen Kellogg
1952; January 2011

Indiana Alpha

Tamara Hickson Bardos
1962; September 2010
Hester Phelan Moulding
1942; May 2010

Indiana Beta

Dorothy Thompson Letsinger
1940; December 2010
June Brown Miller
1942; November 2010
Josephine Miller Rudicel
1936; October 2010
Mary Keyes Temple
1956; October 2010

Indiana Delta

Mary Crane Swarts
1939; November 2010

Indiana Epsilon

Debra Markstone Castino
1980; December 2010
Sally Organ Pierce Geitz
1952; October 2010

Joyce Southard Brecht Harlow
1951; October 2010

Indiana Gamma

Edelle Smith Flynn
1940; October 2010

Betty Johnson Stone
1945; January 2011

Iowa Alpha

Betty Preuss Wettach
1946; December 2010

Iowa Beta

Edith Pemble McInnis
1938; January 2011

Iowa Gamma

Katherine Graves Osterhout
1956; December 2010

Iowa Zeta

Sue Stevens Bawden
1949; September 2010
Nora "Teeny" Duffy Gibbons
1940; October 2010
Marie McCalley Rice
1945; October 2010

Kansas Alpha

Jo Ann Teed Hudlow
1942; January 2011

Kansas Beta

Charlotte Lander Guerrant
1940; December 2010
Sarah Jolley Martin
1955; November 2010

Joan Young Meyer
1944, affiliated Kansas Alpha;
January 2011

Louisiana Alpha

Sally Evans Hodges
1955; June 2010

Louisiana Beta

JanEtte McKeithen Meredith
1947; January 2011

Michigan Alpha

Gretchen Schatz Andrews
1939; December 2010

Michigan Beta

Frances Capps Robinson
1942; May 2010
Marjorie Sadler Robinson
1943; December 2010
Greta Lee Kranz Banzhaf Vestal
1943; October 2010

Minnesota Alpha

Joyce Byers Reed
1944; October 2010

Missouri Alpha

Elizabeth McReynolds Rozier
1928; December 2010

Missouri Beta

Page Lloyd Beckemeier
1940; December 2010

Missouri Gamma

Jan Rose Cromwell
1969, affiliated Arkansas Alpha;
December 2010
Jean Slaymaker Dennis
1941; October 2010

Montana Alpha

Pat Rafferty Stewart
1947; January 2011

Nevada Alpha

Helene Fulton Belz
1935; November 2010
Evelyn Semenza English
1933; November 2010
Barbara Burhans Harbit
1946; October 2010
Hellen Meaker Mapes
1941; April 2010
Alayne Oppio-Walters
1986; March 2010
Virginia Hill Plath
1933; July 2010
Dana Rose Richardson
1975; March 2010
Andree Walker
1962; July 2010

Shirley Heany Wilson
1938; June 2010

New York Delta

Eileen Hoffman King
1954; January 2011

North Carolina Alpha

Tempie Kitchin Kerr
1994; December 2010

Nova Scotia Alpha

Sheila Mason Parker
1960; December 2010

Ohio Alpha

Virginia Coe Briggs
1931; October 2010

Ohio Beta

Priscilla Elliott Ebinger
1955; January 2011
Anne Cartwright Van Vleet
1943; February 2010

Ohio Zeta

Marilyn Hoyer Cottey
1952; November 2010

Oklahoma Alpha

Mary Ellis Tack Carrere
1937, affiliated Louisiana Alpha;
October 2010
Virginia Berry Johnson
1941; October 2010
Sara Jean Morrow
1945; December 2010

Oklahoma Beta

Caroline Elizabeth Buerger
2000; May 2010
Jennifer Goodpasture Stiegler
1996; December 2010

Ontario Beta

Joan Adams Avison
1948; October 2010

Oregon Alpha

Kim Kay Coleman
1981; December 2010
Jane Deardorff Wynn
1969; January 2011

Oregon Beta

Pauline McGill Armstrong
1939; December 2010
Jackie Dashney Morton
1953; December 2010
Marian Thomas Sand
1938; October 2010

Pennsylvania Beta

Marilyn Holme Weissman
1945; January 2010

Pennsylvania Gamma

Jean Black Lange
1934; November 2010

South Dakota Alpha

Mary Keown Dineen
1962; August 2010
Helen Jorgenson Fowler
1940; December 2010
Muriel Townsend Smith
1948; October 2010

Tennessee Alpha

Louise Sutton Rothe
1936; January 2011

Texas Alpha

Martha Tubb Aldred
1942; November 2010
Betty Park Carter
1939; May 2010
Jessica Fertitta
2003; February 2011
Jacqueline Ehlers Goss
1950; August 2010

Texas Beta

Helen McKemie Riddle
1947; September 2010

Texas Gamma

Beverly Montague Cowden
1954; August 2010
Georgia Burrell Terrell
1963; January 2011
Jene Glazner Waite
1957; November 2010

Texas Zeta

Ann Byargeon Davis
1977; January 2011

Utah Alpha

Gloria Stevenson Mathews
1942; September 2010

Virginia Alpha

Julia Edwards Sawyers
1949; January 2011

Virginia Gamma

Beverly Barnes Sherman
1952; October 2010

Washington Alpha

Nita Peterson Foster
1948; December 2010
Greta Pearce Noffsinger
1947; January 2011
Elizabeth Bovee Patterson
1945; December 2010
Annette Olsen Seaman
1944; August 2010

Washington Beta

Dottie Damon Hagner
1935; October 2010

West Virginia Alpha

Mary Ann Freeman White
1950; November 2010

Wisconsin Alpha

Mary Bogumill Callahan
1947; November 2010
Verone Hetland Cook
1948; October 2010

Wyoming Alpha

Helen Christensen Gnam
1936; December 2010
Olive Williams Thomas
1937; January 2011

Gatlinburg Study Committee Releases Report

Grand Council would like to thank the Gatlinburg Study Committee for their hard work and thorough research for their comprehensive report.

The 10 members serving on the committee range in age and represent all regions of the United States. They have expertise in law, marketing, finance, education, management, art and fundraising. The committee also includes an Arrowmont Board of Governors' member and an Arrowmont student.

The report includes a summary, the committee findings and initial recommendations. Grand Council is in the process of reviewing and considering the recommendations of the committee. To download a copy of the report, visit www.pibetaphi.org. Go to the Literacy section and then select Arrowmont.



The Gatlinburg Study Committee from front left, New York Alpha FRAN DESIMONE BECQUE, Tennessee Beta MARTHA KING BAIRD and Illinois Zeta CATHY SWENGL HUNT. Back row left, California Delta TRACY BEAUFORT WHITEHEAD, California Theta KRISTIE CALLAHAN GILL, South Carolina Alpha JOANNE FLOWERS DUNCAN, Maryland Beta MARY RAKOW TANNER, Chairman and Colorado Alpha LISA GAMEL SCOTT, Facilitator and Georgia Alpha LISA MASTERS and Washington Alpha MARGARET SUNDBERG.

Fraternity Partnerships and Member Privacy

Through the Affinity Marketing program, Pi Beta Phi is partnered with several companies including Geico®, Bank of America® and 1-800-Flowers®, to bring convenience and savings to our members. Also, the income generated from these partnerships helps supplement Fraternity operating expenses. This allows us to avoid raising member dues.

From time to time, these partners are permitted to disseminate marketing and promotional materials to our membership regarding these partnerships. Either Pi Beta Phi sends information out on behalf of the third party, or they are given limited member contact information to use for specific promotions. They are never given access to our member database and are not permitted to use member information for any other purpose. The Fraternity never sells member information to any company and has very strict guidelines for how our partners may communicate with members.

To learn more about the many services available to you through the Fraternity's Affinity Partnerships, visit www.pibetaphi.org and click Shop.

Headquarters Staff Participate in RESPONSE ABILITY Training

On Thursday, February 10, 2011, six Pi Beta Phi Headquarters staff members were certified as RESPONSE ABILITY™ Level I facilitators during the Association of Fraternal Leadership and Values' (AFLV) Central Fraternal Leadership Conference in St. Louis. Pi Beta Phi sponsored the pre-conference workshop, which was hosted by Mike Dilbeck, co-founder of The RESPONSE ABILITY Project. Registrants for this year's pre-conference workshops hit record levels. "The RESPONSE ABILITY Project plays an integral role in our *Leading with Values*® programming," said Grand Vice President Programming LINDA NOEL IBSEN, Colorado Beta. "It assists Pi Phi in teaching our members how to be true to themselves and their personal and moral obligations to others. Pi Phi is elated we were able to sponsor the certification training so that others, including our own staff, would have the opportunity to benefit in the same way."

Geico® is a registered trademark of Government Employees Insurance Company Corporation.
Bank of America® is a registered trademark of Bank of America Corporation.
1-800-Flowers.com® is a registered trademark of Fresh Intellectual Properties, Inc.
Response Ability™ is a trademark of Beck & Co.

The Arrow Reader's Guide

The Arrow of Pi Beta Phi is the official quarterly publication of Pi Beta Phi Fraternity. The purpose of *The Arrow* is to present matters of value to Pi Beta Phi; furnish a means of communication among collegiate chapters, alumnae organizations and officers; and represent the worthiest interest of Fraternity women.

CONTACT THE ARROW:

The Arrow of Pi Beta Phi Fraternity
1154 Town & Country Commons Drive
Town & Country, Missouri 63017
TheArrow@pibetaphi.org
Phone: (636) 256-0680 Fax: (636) 256-8095

HOW TO RECEIVE THE ARROW

Collegians receive quarterly issues of *The Arrow* each year with payment of collegiate dues through their chapter. Individual copies are mailed to each undergraduate member's permanent address, and each Pi Beta Phi chapter receives six copies.

The Fall *Arrow* is mailed to all alumnae. Dues paying alumnae are mailed the winter, spring and summer issues. *The Arrow* is posted online, and non-dues paying alumnae who have a good e-mail address listed with Headquarters (HQ) receive an e-mail notification. Messages are also posted on the Fraternity's official Facebook® page and Twitter® when the magazine is available online.

To receive four hard copy issues of *The Arrow*, pay your \$25 annual Fraternity alumna dues to your local alumnae organization or directly to HQ by mailing a check to Pi Beta Phi Fraternity, Alumna Dues, 1154 Town & Country Commons Drive, Town & Country, Missouri 63017. You can also click on the Pay Dues button on the home page of www.pibetaphi.org.

HOW TO MAKE AN ADDRESS CHANGE OR NAME UPDATE

Visit the profile section of eSisters, or e-mail your name and/or address changes to headquarters@pibetaphi.org. You may also call Pi Beta Phi HQ at (636) 256-0680 or mail a written notice to Pi Beta Phi Headquarters.

LETTERS TO THE EDITOR

E-mail your letter to the Editor at editor@pibetaphi.org. Please include your full name and chapter of initiation. *The Arrow* reserves the right to publish any letter received. Letters may be edited for space and clarity.

HOW TO GET PUBLISHED

All Pi Phis are encouraged to submit news and stories to *The Arrow*. All submissions are subject to editing for content, grammar and space constraints. When submitting a story, be sure to include a member's preferred chapter, first, maiden and last names. As a general rule, *The Arrow* does not print stories about weddings, engagements, pinnings or birth announcements. Visit *The Arrow* webpage for more information and to download Pi Beta Phi's Photography Guidelines. We cannot guarantee the publication of any submission. We receive so many and space is limited.

ARROW SUBMISSION DEADLINES

Summer Issue: May 1	Winter Issue: November 1
Fall Issue: August 1	Spring Issue: February 1

Anti-Hazing Hotline

See hazing? Report it. Pi Beta Phi is proud of its partnership with the Greek Anti-Hazing Hotline. Report hazing 24 hours a day to (888) 688-4293. Callers may remain anonymous, or they can provide personal information so their concerns can be responded to directly. The hotline connects to a dedicated voice mailbox at the Cincinnati law firm of Manley Burke, the publisher of *Fraternal Law*. Manley Burke monitors the hotline on a daily basis and forwards all messages to the appropriate fraternal organization, along with the hazing laws from the relevant jurisdictions.



April is Advisor Appreciation Month

The National Panhellenic Conference (NPC) has designated April to be Advisor Appreciation Month. Every April, the NPC sororities in the United States and Canada recognize the women and men who often don't get thanked enough — our Advisors. NPC and Pi Beta Phi salute the hardworking and numerous Advisors during National Advisor Appreciation Month.

Visit the Events/Meeting section of the NPC website, www.npcwomen.org, for more ideas and information.

Check out the New Online Edition of *The Arrow*

The new online version of *The Arrow* is now available. The new digital platform offers interactive functions including Table of Contents article links, embedded video and audio capabilities, iPhone compatibility, search engine optimization and detailed analytics to help us better serve you. Check it out today by visiting www.pibetaphi.org and click on About Us > *The Arrow* Magazine.

CORRECTION: In the Winter 2011 *Arrow*, it was mistakenly reported the Bostonian Alumnae Club made pin cushions for the Maryland Gamma Chapter. The pin cushions were made for the Massachusetts Gamma Chapter. *The Arrow* apologizes for the error and regrets any confusion it may have caused.



Pi Beta Phi Fraternity
 1154 Town & Country Commons Drive
 Town & Country, MO 63017

CHANGE SERVICE REQUESTED

NONPROFIT
 ORGANIZATION
 U.S.
 POSTAGE PAID
 DULLES, VA
 PERMIT NO. 490



*Protecting Our Values.
 Supporting Our Programming.
 Providing Quality Products.*

When you purchase from a licensed vendor, you are supporting efforts in protecting the values and identity of Pi Beta Phi.

Licensed vendors assure a quality product at a competitive price — with a portion of the proceeds directly benefitting the programming and guidance offered by Pi Beta Phi.

Look for the Official Licensed Product Logo and feel confident that your chapter, sister and legacy will be receiving the best of the best.

Visit GreekLicensing.com to find Greek Licensed Vendors.