

The Arrow OF PI BETA PHI

The Magic of Sisterhood Convention 2011

Page 4





The OF PI BETA PHI Arrow

PI BETA PHI FRATERNITY

ΠΒΦ

Founded 1867

FOUNDERS

Emma Brownlee Kilgore

Margaret Campbell

Libbie Brook Gaddis

Ada Bruen Grier

Clara Brownlee Hutchinson

Fannie Whitenack Libbey

Rosa Moore

Jennie Nicol, M.D.

Inez Smith Soule

Fannie Thomson

Jennie Horne Turnbull

Nancy Black Wallace

MISSION STATEMENT

The mission of Pi Beta Phi Fraternity for Women is to promote friendship, develop women of intellect and integrity, cultivate leadership potential and enrich lives through community service.

VISION STATEMENT

Pi Beta Phi Fraternity is committed to being recognized as a premier organization for women by providing lifelong enrichment to its members and contributing to the betterment of society.

CORE VALUES

Integrity

Honor and Respect

Lifelong Commitment

Personal and Intellectual Growth

Philanthropic Service to Others

Sincere Friendship



4

Features

- 4 The Magic of Sisterhood: Convention 2011
- 14 State of the Fraternity
- 30 Good Government Needs Greeks
- 33 Membership Satisfaction Survey Results

Follow us online:



eSisters®
www.pibetaphi.org/esisters



Twitter®
www.twitter.com/pibetaphihq



Facebook®
www.facebook.com/pibetaphi



YouTube®
www.youtube.com/pibetaphihq

The Arrow of Pi Beta Phi is published by Pi Beta Phi Fraternity, 1154 Town & Country Commons Drive, Town & Country, Missouri 63017. POSTMASTER: Send address changes to *The Arrow of Pi Beta Phi*, 1154 Town & Country Commons Drive, Town & Country, Missouri 63017.

eSisters® is a registered trademark of Pi Beta Phi Fraternity for Women.

Facebook® is a registered trademark of Facebook, Inc.

Twitter® is a registered trademark of Twitter, Inc.

YouTube® is a registered trademark of Google, Inc.



16



22



26



34

Departments

- 2 Perspective
- 3 From our Readers
- 11 Literacy
- 16 Campus Living
- 18 Collegiate News
- 22 Collegiate Awards
- 25 Remember
- 26 Foundation
- 32 In Her Words
- 34 Alumnae News
- 38 Alumnae Awards
- 43 Reunions & Anniversaries
- 45 Fraternity Directory
- 48 Pi Phi Express®
- 50 In Memoriam
- 52 News & Notes



View
The Arrow®
 online at
www.pibetaphi.org

ARROW EDITOR

Constance Dillon
 editor@pibetaphi.org

MARKETING & COMMUNICATIONS DIRECTOR, HEADQUARTERS

Eily Cummings

CREATIVE DIRECTOR

Tim Steele

ARROW STAFF

Kelly O'Neill
 Jennifer Whittom Schmidt

GRAND COUNCIL

Mary Loy Tatum
 Grand President

Cara Ballard Sutcliffe
 Grand Vice President Collegians

Cindy Rice Svec
 Grand Vice President Alumnae

Diane Bielman
 Grand Vice President Communications

Rae Wohlhueter Maier
 Grand Vice President Finance

Paula Pace Shepherd
 Grand Vice President Membership

Julie Carney
 Grand Vice President Programming



ON THE COVER: Pi Phis experienced the Magic of Sisterhood at Pi Beta Phi's 68th Biennial Convention. Honorees included retiring National Panhellenic Conference Delegate CAROL INGE WARREN, North Carolina Beta (pictured). Join the celebration, beginning on Page 4. Wand provided by Maggie Ford of Puttin' on the Glitz.



Member Fraternity Communications Association

PI BETA PHI HEADQUARTERS
 1154 Town & Country Commons Drive
 Town & Country, Missouri 63017
 (636) 256-0680 • FAX (636) 256-8095
headquarters@pibetaphi.org
www.pibetaphi.org

Magic That Lasts

For those who attended convention, you may remember in my opening remarks I referenced companies and organizations that are “built to last.” The two characteristics those organizations have in common are being visionary and being dedicated to a core set of values.



MARY LOY TATUM
Grand President
Oklahoma Beta
Oklahoma State University

The “Magic of Sisterhood” during convention confirmed to me our Fraternity is indeed built to last. The visions and values shared by those who have gone before us and those who lead us today were clearly represented at this convention.

In July, all convention attendees were invited to submit feedback via an online survey. You told us that Mickey, Minnie and Pi Phi’s Fairy Godmother Ivana certainly added magic to our time in Orlando, Florida, but it was the unique Pi Phi elements you found most inspiring, including:

- Seeing your chapter banner cross the stage and proudly cheering with your sisters at Dinner by Chapter.
- Experiencing initiation with more than 900 women, pledging their support to our newest members and renewing their commitment to our Fraternity.
- Remembering your deepest ties as the convention body participated in opening and closing ritual.
- Hearing the magic moments shared, which inspired many of you to remember your own special sisterhood memories.
- Feeling great pride in what Pi Phi has accomplished in our 100 years of philanthropic work, and being inspired by the possibilities of bettering society over the next 100 years through Read. Lead. Achieve.
- Giving Pi Beta Phi Foundation tribute halo charms to your sisters to recognize and honor them.
- Congratulating the accomplishments of individuals, alumnae organizations and chapters through awards and ceremonies made you feel Pi Phi proud.

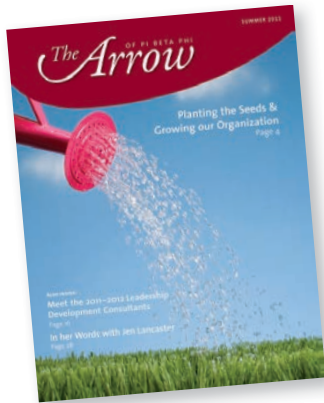
An astounding 92 percent of you said this convention met or surpassed your expectations. One attendee wrote, “It was a wonderful, celebratory and values-based atmosphere. The true feeling of friendship and sisterhood was evident everywhere.” If our Fairy Godmother Ivana could wave her magic wand one more time, I would wish for all of our members to feel the same sisterhood, friendship and celebration shared by convention attendees in your experiences as a Pi Phi for life.

Ring Ching,

A handwritten signature in cursive script that reads "Mary".

Mary Loy Tatum

From our Readers



Volunteers

Thank you for the article on Michigan Gamma CLAIRE BRADY in the Summer *Arrow*. I had the privilege of meeting Claire at convention and our lengthy conversation was one of the highlights. Her positive spirit, feedback and commitment to Pi Phi re-sparked my long-standing thought that Pi Phi is much more than one's chapter of initiation.

JENNIE BLANTON PELUSO
Florida Epsilon — Austin, Texas

Literacy Efforts

It is always with great interest I read articles in *The Arrow* about our national philanthropy: literacy. As a primary teacher, I have always felt the focus Pi Phi took in the direction of literacy was such a perfect one.

Our alumnae group in Wenatchee, Washington, partnered with our library district to always keep two bookshelves full of children's books at our local hospitals. We pick up the brand-new books, donated by the library, and keep the shelves stocked up. This has been a wonderful ongoing project for our club for some years and very easy to complete. We are proud of what we do and appreciate so much the wonderful support we get from the North Central Washington Regional Library.

CONNIE BUSIGIN BEAN
Washington Alpha —
Wenatchee, Washington



We look forward to hearing from you. Email comments to the Editor at editor@pibetaphi.org or mail them to Pi Beta Phi Headquarters, 1154 Town & Country Commons Drive, Town & Country, Missouri 63017.

The Magic of Sisterhood Convention

The 2011 Convention was indeed magical and a very special convention for my daughter Simone, who was an alumna initiate. She loves the long-standing traditions of her alma mater, Mount Holyoke College, but she knew she was missing out by not having had the opportunity to be a fraternity woman. She was initiated with the badge Michigan Beta gave to me after I served as a member of their Alumnae Advisory Committee (AAC). I thank Grand Council for providing her with the opportunity to be a Pi Phi. Having her as a sister is a delight!

FRAN DESIMONE BECQUE
New York Alpha — Carbondale, Illinois

Where Can I Find RIF Forms?

Please tell me how I missed *The Arrow* with all the recruitment information. I never received this information — and I am not the only one. The magazine needs to get to us in late June or early July.

TRUDE STEELE NORMAN
Oklahoma Alpha — Muskogee, Oklahoma

From the Editor:

Recruitment Information Forms (RIFs) and instructions are available online year-round, as many college campuses hold recruitment throughout the school year. These forms can be found on the public side of the Pi Beta Phi website, www.pibetaphi.org. For the safety of our collegiate members, Vice President of Membership contact information is available through the members-only section of the website, which requires a login, and is not published in The Arrow.

LET THE *Magic* OF SISTERHOOD CONTINUE

Magic and sisterhood were on display at Pi Beta Phi's 68th Biennial Convention in Orlando, Florida. The Local Convention Committee, aka Sunshine Sisters, welcomed members to their home state with sincere friendship and a dose of vitamin C from an orange juice stand.



The Magic Began with Sunshine Sisters

Convention began with Friday's opening dinner celebration. Members had the opportunity to connect with old friends and make new ones. Illinois Eta KATELYN EPPERLY, "American Idol" Season Nine Finalist, performed a few of her original songs along with a Pi Phi favorite, "Ocean to Ocean."

The first General Session took place Friday after dinner and was the first time convention attendees were introduced to "magic moments." Throughout convention, officers, alumnae and collegians shared some of their most precious Pi Beta Phi memories with the convention body. These magic moments were also shared during business sessions and meals, and even more were posted on Pi Phi's social media sites and in *The Daily Dart*. It was heartwarming to hear and read such touching stories.

The magic continued with the appearance of Pi Phi's very own Fairy Godmother Ivana Dream. Ivana spread her magic over the membership and managed to save the day as her magical talents "fixed" the broken projector, just in time for Pi Beta Phi to welcome two new chapters to the roll call. The pride and accomplishment of the women from Ohio Kappa at the University of Cincinnati and Maryland Gamma at Johns Hopkins University was inspiring, as they walked on stage to receive their charters.

The evening ended with keynote speaker Mari Ann Callais using her storytelling and musical talents to inspire members to be the best they can be. "Being a Pi Phi, it's not just something you go and do," Mari Ann said. "It's who you are; it's who you were meant to be. You are a family of women who, even if you don't know each other, have something in common. The one thing you share in common is your ritual."



Keynote speaker Mari Ann Callais (center) delighted convention attendees with her storytelling and musical talents.

After singing aloud with Mari Ann, members left Friday evening's session energized and with a new perspective, ready to share ritual through their actions and words.

Friends and Leaders for Life

The surprises kept coming on Saturday with a special appearance from Mickey and Minnie Mouse. Afterward, Grand President MARY LOY TATUM, Oklahoma Beta; Foundation President KATHY SWINEA NEVILL, Tennessee Gamma; and Fraternity Housing Corporation President EILEEN O'NEIL GRIGUTIS, Kentucky Beta; delivered the State of the Entities addresses.

Grand Council and Director elections were held Saturday morning. For the first time, Pi Beta Phi offered delegate voting via Scantron®. "The addition of the Scantron process went very well and expedited our process considerably," said Elections Coordinator CAROL INGE WARREN, North Carolina Beta. For a complete listing of all Fraternity officers, please refer to the Fraternity Directory on Page 45.

One of the intentions of the 2011 Convention was to provide inspirational, educational and operational programming and entertainment with breakout sessions, Ask the Expert opportunities, a Fraternity Housing Corporation Symposium and the debut of the Friends and Leaders for Life Resource Series.

Ohio Kappa Chapter President MACKENZIE AUSTIN (left) and Maryland Gamma Chapter President ELIZABETH DUVAL (right) accepted their chapter charters from Grand President MARY LOY TATUM, Oklahoma Beta, during Friday night's General Session.



Scantron® is a registered trademark of Scantron Corporation.



Fraternity Archivist and Historian FRAN DESIMONE BECQUE, New York Alpha, shared her favorite Pi Phi magic moment of meeting her friend, Indiana Gamma LISA CARMIN, at the 1987 Convention. Immediately following Fran's magic moment, Lisa presented the crowd with her own magic moment ... meeting Fran at the 1987 Convention.

This allowed each attendee to choose what was most relevant for her and her chapter, Alumnae Advisory Committee (AAC), Chapter House Corporation (CHC) or alumnae organization.

The Friends and Leaders for Life Resource Series sessions began on Saturday. These 50-minute sessions, offered each morning of convention, allowed participants to join a more intimate group to discuss specific topics of interest and learn about new and updated Fraternity resources. The most popular sessions included chapter and alumnae organization leadership panels, a fundraising tips



The convention body was surprised by special guests Mickey Mouse and Minnie Mouse, as they helped Grand President MARY LOY TATUM, Oklahoma Beta, begin Saturday morning's General Session.

program, a program on Pi Beta Phi Foundation, opportunities to learn more about our legacy of literacy service and membership selection. The series was so successful that many sessions were standing room only.

Legacies were honored during Saturday's Cookie Shine luncheon. Ivana Dream appeared and shared a lovely recipe for Pi Phi Friendship. During the afternoon's legislation sessions, attendees got a little workout when everyone joined in to do the Pi Phi hustle.

Saturday concluded with Pi Phi's beloved Dinner by Chapter, which included the Chapter Banner Parade. Members of all ages were seated with sisters from their chapter and relished the opportunity to meet new sisters and share memories.

Chapter awards were distributed to celebrate the many amazing accomplishments of our collegiate women. The night ended with a show-stopping performance by the convention chorus.

The Local Convention Committee worked tirelessly to bring you an unforgettable convention experience. The Fraternity extends a special thank you to all who served on the committee, as well as all of the local volunteers who helped bring the Magic of Sisterhood to convention.



Convention volunteers and Florida Betas JOANIE BRIDGES HARRELL and SUSIE MCKELLAR BRYANT manned the Local Convention Committee's orange juice stand to welcome convention attendees to Orlando.

A Celebration of Tradition

Members who passed away during the 2009–2011 biennium were honored Sunday morning during the Memorial Service. Shortly after the Memorial Service, the Magic of Sisterhood was extended to four fabulous women, Connecticut Alpha DR. LINDA LANGFORD, Florida Beta ELLEN DEMETREE, Illinois Theta BETTIE CRAWFORD and Michigan Beta SIMONE BECQUE, who were initiated by Grand President MARY LOY TATUM, Oklahoma Beta, during the convention Initiation Ceremony.

“Alumnae initiation invites incredible women to participate in Fraternity life and share a lifetime of sincere friendship with Pi Beta Phi,” said Grand Vice President Membership PAULA PACE SHEPHERD, Texas Epsilon. “There are opportunities abound for Pi Beta Phi to recruit alumna women into our membership who will help lead and guide the Fraternity into the future.”

The celebration continued at Sunday’s Recognition Luncheon, which included a tribute to retiring National Panhellenic Conference (NPC) Delegate CAROL INGE WARREN, North Carolina Beta. Carol has dedicated much of her life to Pi Beta Phi and to the Greek community as a whole. She is well respected by Pi Phis of all ages and by fraternity men and sorority women in other organizations across North America. She is a true servant leader and model example of a Pi Phi woman. There were many tears of joy shed for Carol as her beautiful tribute video played.

“Carol is a testament to Pi Phi values in action,” said NPC Alternate Delegate ASHLEY DYE, Illinois Zeta. “She has represented our Fraternity with grace, distinction and integrity. We should all be ‘Pi Phi Proud’ of Carol’s numerous contributions and accomplishments.”

In honor of Carol’s retirement, and to thank Carol for her service to the Greek community, 23 NPC Delegates joined Pi Phi for lunch. To further honor Carol, Grand President MARY LOY TATUM, Oklahoma Beta,



Pi Beta Phi’s Fairy Godmother Ivana Dream bestowed retiring NPC Delegate CAROL INGE WARREN, North Carolina Beta, with the title of “Honorary Fairy Godmother,” complete with her very own wine and silver blue magic wand.

awarded each of the other 25 NPC member organizations the Friend of Distinction Award. To top off the luncheon, Ivana Dream bestowed Carol with the title of “Honorary Fairy Godmother,” complete with her very own wine and silver blue magic wand.

Sunday’s only General Session featured Mike Dilbeck, co-founder of the RESPONSE ABILITY™ project. Mike inspired women to be sisters by not allowing bystander behavior to happen. “You cannot be a leader and be a bystander at the same time,” Mike said.

Sunday afternoon also featured small-group programming geared toward supporting and training chapter and alumnae organization leaders. “The operational breakout sessions provided excellent information, resources and tools for Fraternity and chapter leaders,” said Collegiate Region Six Risk Management/Policy Specialist STEPHANIE COOMES ZUNIGA, Indiana Zeta. “The ‘Is it a Pi Phi Party?’ session

For additional information regarding legislation, view the full convention minutes this November on the members-only side of the Pi Beta Phi website.



Grand President Mary Loy Tatum, Oklahoma Beta (center), initiated the 2011 Convention alumnae initiates on Sunday morning. From left, Illinois Theta BETTIE CRAWFORD, Florida Beta ELLEN DEMETREE, Connecticut Alpha DR. LINDA LANGFORD and Michigan Beta SIMONE BECQUE.

A Dedication to Philanthropic Work and to Pi Beta Phi



Pi Beta Phi's 2011-2013 Grand Council. From left, Grand Vice President Alumnae CINDY RICE SVEC, Kansas Beta; Grand Vice President Finance RAE WOHLHUETER MAIER, Kentucky Beta; Grand Vice President Collegians CARA BALLARD SUTCLIFFE, Illinois Beta-Delta; Grand President MARY LOY TATUM, Oklahoma Beta; Grand Vice President Communications DIANE BIELMAN, California Eta; Grand Vice President Membership PAULA PACE SHEPHERD, Texas Epsilon; and Grand Vice President Programming JULIE CARNEY, Texas Beta.

was especially beneficial in demonstrating how a seemingly non-Pi Phi gathering could be misconstrued or have the potential for major consequences.”

“My favorite part of the convention this year was when we had the opportunity to ask PHI Level Chapter Presidents about the success of their chapter,” said Texas Zeta Chapter President JULIE HENNIGHAUSEN. “They offered helpful suggestions — I can’t wait to go back and share with my chapter at Baylor. It is exciting to find ways to make my chapter the best that it can be.”

Pi Beta Phi Foundation hosted dinner Sunday evening with guest speaker Pete Smithhisler, President and CEO of the North-American Interfraternity Conference. Pete brought a new appreciation for fraternity membership through his presentation, “Celebrating Who We Are: Reflections of Pi Beta Phi,” which challenged members to look deep, think bigger and put a little more feeling into their experience.

With the Fraternity celebrating its 100 years of literacy service in 2012, Pi Phi leadership wanted the Fraternity’s literacy story to be told throughout convention. Fraternity Archivist and Historian FRAN DESIMONE BECQUE, New York Alpha, developed the Legacy of Literacy room. The room gave convention attendees the opportunity to travel back in time to the very start of Pi Beta Phi Settlement School. The historical room was open Friday through Monday and was full of photographs, scrapbooks, a video viewing area and mountains of Pi Phi memorabilia. Little did attendees know, but the Legacy of Literacy room was just the beginning. The membership was treated to an emotional Legacy of Literacy production during Monday morning’s first General Session. Pi Beta Phi’s 100 years of literacy service was told through a series of engaging letters and videos, depicting critical time periods throughout the Fraternity’s history.

Pi Phi also announced it reached its goal of raising \$1 million for First Book®, nearly a year and a half early of its 2012 deadline, during Monday’s General Session. A check for the total raised this past biennium was presented to

Stay Connected

With the addition of a special Twitter hashtag, #piphimagic, and the addition of the new Pi Beta Phi blog, <http://pibetaphiblog.org>, members unable to attend convention still experienced the Magic of Sisterhood.

Guest bloggers Illinois Theta MARGARET MERLO, Iowa Gamma LEIGH THIEDEMAN and Colorado Alpha LISA GAMEL SCOTT delighted Pi Phis everywhere with their entertaining summaries of convention events.

Check out Pi Phi’s blog, Twitter, Facebook page and YouTube channel for additional behind-the-scenes convention details.



Legislative Committee Chairman KRIS NOER OLSON, Indiana Delta (left), and Fraternity Parliamentarian JAN SHRADER FALK, Nebraska Beta (right), browse through the Legacy of Literacy room during convention.

First Book President and CEO Kyle Zimmer, who passionately spoke about Pi Phi's literacy work. She shared how moved she was to be a part of the centennial celebration. The session ended with a video message from former First Lady BARBARA BUSH, Texas Eta, congratulating Pi Beta Phi on its work to eliminate illiteracy.

During Monday's second General Session, Pi Phi announced its new literacy platform: Read. Lead. Achieve. and its new literacy vision: Pi Beta Phi leads the way to a more literate society. Through storytelling, volunteers communicated how Pi Beta Phi's philanthropic work will be rooted in friendship; be uniquely Pi Phi; make its impact locally; allow members to give time, talents and treasures; and encourage reading.

Current Pi Phi initiatives such as the Champions are Readers® program, Arrow in the Arctic and First Book projects will continue to be part of Read. Lead. Achieve. Each of these initiatives will evolve over time to help our members better serve their communities. Also during this session, Pi Phi was excited to announce all literacy fundraising dollars will be sent to Pi Beta Phi Foundation beginning in January 2012 for chapters and July 2012 for alumnae organizations.

Alumnae and collegians channeled their inner creative side during Monday's literacy boxed lunch. Each lunch included bookplates, which were collected and placed into 3,000 books for Feeding America Tampa Bay. In honor of convention, Pi Beta Phi and First Book distributed 100,000 brand-new books throughout North America (25,000 in Florida) to children in need.

CAMPUSPEAK co-founder David Stollman gave a thought-provoking presentation "Buy In or Get Out" during the first afternoon General Session. The presentation prompted members to think about what it really means to own your letters — not just rent them.

Champions are Readers® is a registered trademark of Pi Beta Phi Fraternity for Women.

The Magic Moments Continue

by Florida Delta Chapter President
EDEN JOYNER

I was that girl. Of the hundreds of Pi Phis filling the convention hall, I was the girl who was chosen to lead "Ring, Ching, Ching" for hundreds of sisters from across the country. Though told later it was a completely random selection process, I felt like it was fate.

Being Chapter President runs in the family. My grandmother, DOROTHY GREULACH HERBERT, was Chapter President of North Carolina Alpha at the University of North Carolina. About 50 years later, I was elected Chapter President of Florida Delta at the University of Florida. During breaks, I'll visit my grandma and exchange notes and tips. Though plenty has changed since her presidency, the same dilemmas and joys exist.

One thing she found particularly alarming was that my chapter did not know "Ring, Ching, Ching." After listening to my grandma sing it many a time, I introduced "Ring, Ching, Ching" to my chapter, and we've been using our spoons ever since. It certainly was fate that of all the women at convention, I was chosen to lead the song my grandma introduced to me.

She was elated to learn I was selected to lead "Ring, Ching, Ching" at convention and asked me to record it. It's now available on YouTube for the world to see my lack of singing talent and southern "y'all" introduction. It's something special my grandma and I share, and I wouldn't give up those two minutes for the world. Ring Ching!



Florida Delta Chapter President EDEN JOYNER shows off her invitation to lead the convention body in singing "Ring, Ching, Ching."



Grand Vice President Membership PAULA PACE SHEPHERD, Texas Epsilon, was one of five presenters who introduced Pi Beta Phi's new Read. Lead. Achieve. literacy platform on Monday.

Other afternoon activities included award presentations and the Member of Distinction award was presented to Ohio Beta BARBIE OLIVER TOOTLE.

“The Member of Distinction Award was created to recognize members who have distinguished themselves — that sounds pretty simple, but when you describe this year’s recipient, you find that distinguishing herself involves a list of achievements and accolades well over two pages, single-spaced,” said Grand President MARY LOY TATUM, Oklahoma Beta. “To say Barbie touches the lives of those with whom she comes in contact is an understatement. Pi Beta Phi is proud to call her a friend and leader in our sisterhood.”

Convention concluded with the Grand March and Wine Carnation Banquet. During the banquet, retiring Grand Council members LINDA NOEL IBSEN, Colorado Beta, and SUE KINGSLEY ROBINSON, Missouri Alpha, were honored for their years of service to Pi Beta Phi.

Lastly, Grand President MARY LOY TATUM, Oklahoma Beta, presented two of the highest awards presented at convention: the Balfour Cup to the Missouri Alpha Chapter at the University of Missouri and the Premier Club Award to the Oklahoma City Alumnae Club.

“The end of convention is bittersweet,” wrote convention guest blogger MARGARET MERLO, Illinois Theta. “Although we are sad to leave the new friends we’ve made, we are leaving with new Pi Phi memories and new ideas that keep the Fraternity growing.” ↪



Convention 2013

Join us Friday, June 28–Tuesday, July 2, 2013, for the 69th Biennial Convention in sunny San Diego, California, at the Sheraton San Diego Hotel and Marina. We can't wait to see you there!

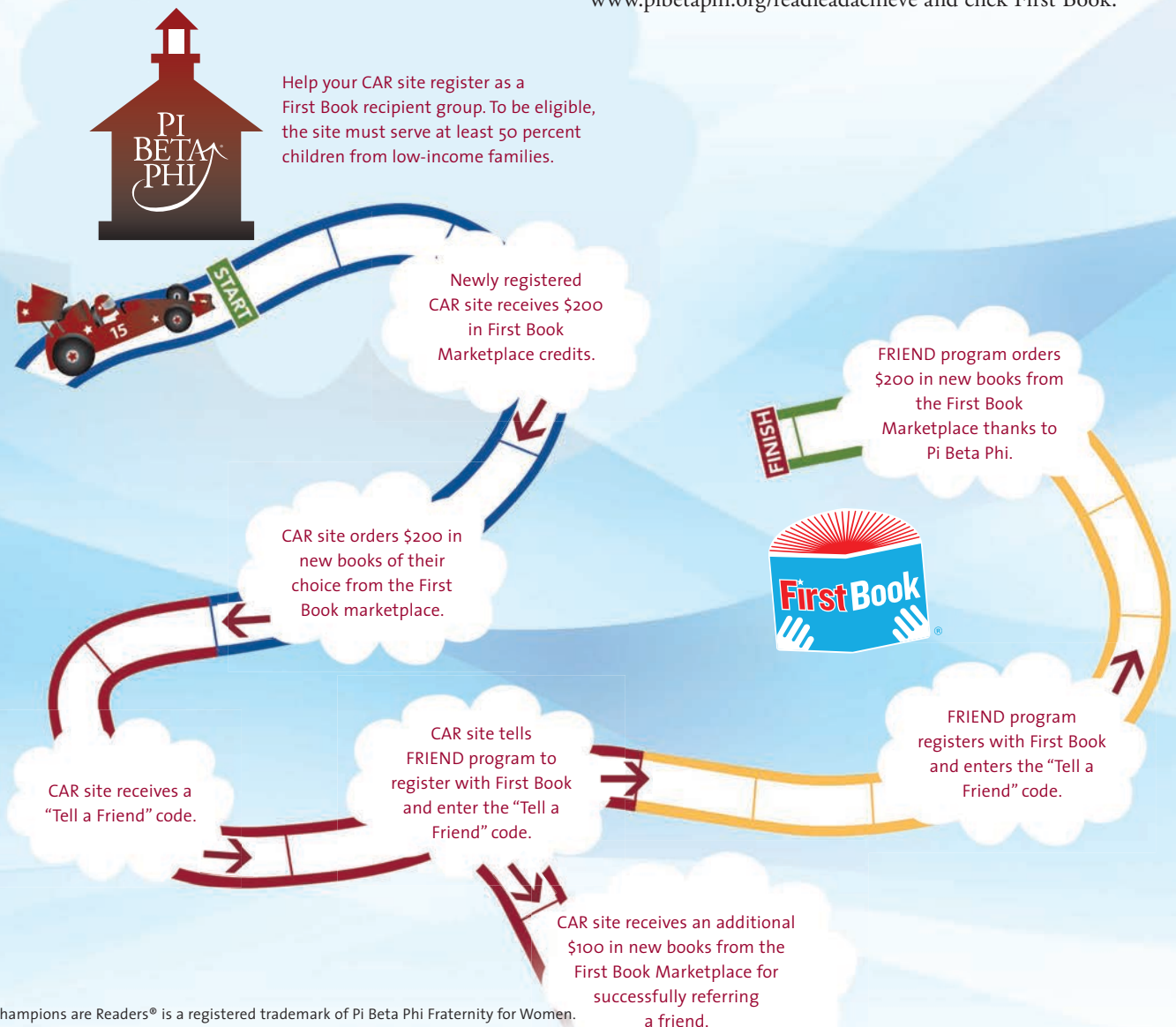


CAR Connect

Pi Beta Phi is excited to announce a new Read. Lead. Achieve. literacy initiative connecting a Pi Phi favorite, Champions are Readers®, with another, First Book®.

For years, Pi Phi's Champions are Readers (CAR) program has been sending Pi Phis into third-grade classrooms and after-school programs across North America for a monthlong reading enrichment program. Together, Pi Beta Phi and First Book have created an opportunity for an even greater impact on these schools and sites using CAR Connect. The new program helps you link the sites serving a low-income population with First Book's resources ... like free books.

All you have to do is register your CAR site with First Book, and then it's off to the races. When your CAR school or site registers with First Book, they receive a \$200 First Book Marketplace credit. But that's not all! If your CAR site refers a peer program, they will earn even more in First Book Marketplace credits. Follow the track below to learn exactly how this new initiative, set to launch January 2012, will work. To register a CAR school or site with First Book, visit www.pibetaphi.org/readleadachieve and click First Book.



Champions are Readers® is a registered trademark of Pi Beta Phi Fraternity for Women.
First Book® is a registered trademark of First Book Corporation.

Literacy Historical Spotlight

Illinois Zeta DELLA “Dell” GILLETTE MORGAN was the first Pi Phi alumna hired to teach at the Settlement School in Gatlinburg, Tennessee. Fraternity Historian FRAN DESIMONE BECQUE, New York Alpha, wrote this letter from Dell’s perspective, using Dell’s many letters, *Arrow* excerpts, scrapbooks and material from the Settlement School collection in the Pi Beta Phi archives.



Dear Pi Phis,

It seems like only yesterday the Illinois Zeta Chapter Delegate to the 1910 Convention told us about the plan to establish a Settlement School in the Appalachian Mountains in honor of the founders and founding of Pi Beta Phi. It took a year to decide on the site for the school and another nine months to work out the logistics. When Michigan Alpha ELIZABETH CLARKE HELMICK, the Settlement School Committee Chairman, told me about the opportunity to teach in Gatlinburg, I was ecstatic to be a part of it.

After being chosen as the first Pi Phi alumna teacher, I traveled to Chicago to visit Mrs. Helmick. There I met founder EMMA BROWNLEE KILGORE, members of the Chicago Alumnae Club and the Illinois Epsilon Chapter at a reception in my honor. Imagine that!

On my way to Gatlinburg, I also stopped in Champaign, Illinois, for the University of Illinois Homecoming, and I told my chapter about the Settlement School. How kind and thoughtful they were to send me books I could use to help start a library. From the day I arrived in December of 1912, I began making so many wonderful memories. I will never forget my first Christmas celebration in Gatlinburg. The Philadelphia Alumnae Club sent 25 hand-dressed dolls. The small girls were joyful! I know that sounds strange, but my storytelling and the doll babies were the only things that moved them; they are the most stolid small things that I have ever seen — often times showing no emotion at all. There were almost 300 people at the Christmas celebration. So you can imagine how little they have to do here. They never have family dinners. They don’t even have Christmas trees at home.



My usual good nature ebbed that Christmas Day, too. The mud and mess of the walk from the school to our house was atrocious. By the time we had made the crest of the hill, and I got my breath, I made a regular suffragette speech. I announced I had made my last trip though that mud, and if the men of the community found it necessary to let their wives and children wear themselves out, all right, but there was to be no more school until some kind of a walk was built. There were at least 75 men present at that time. Of course, I didn't proclaim it from the housetop; just said it to the big boys who were helping me decorate the tree. It didn't take but 10 minutes for everyone in the "burg" to be discussing it. When people asked us when school would open, Miss Hill (the other mountain teacher) and I promptly told them 'when the walk was built.' It really was funny to see the old heads talking it over. I suppose they enjoyed our frantic efforts to be superhuman, but the next morning work on the walk began.

At the end of January that year, we raised Gatlinburg's first American flag on a pole in front of the Settlement School building while the students sang the "Star Spangled Banner." Over the next few months, I organized the older girls into a weekly sewing club and formed two boys' baseball teams. When school ended in late March, it was the first time the children had gone to school for eight months in one year. I worked diligently to gain the trust and respect of Gatlinburg residents. Mrs. Helmick told Grand President MAY LANSFIELD KELLER, Maryland Alpha, the people of Gatlinburg have taken me into their hearts and homes, and suffice to say, they into mine.

Pi Beta Phi chapters and clubs were generous, especially with my plan to start a library. Louisiana Alpha sent some books from their childhood homes, the Baltimore, Maryland, Alumnae Club sent books and games and the Cleveland,

Ohio, Alumnae Club sent more books. The library is growing by the day, and I know the teachers who follow me will keep the library going. Clubs also sent household items the school could use. The Philadelphia Alumnae club sent bedspreads, towels and a radioptican projector for postcards.

I left Gatlinburg after a most wondrous time as the first Pi Phi teacher. I know many more Pi Phi teachers will follow me. The Settlement School, I am certain, will continue to give the children of Gatlinburg a first-rate education. This experience meant everything to me. My journey to the Settlement School and with the Gatlinburg community was chartered by the support of every Pi Phi, including you.

Yours in Pi Beta Phi,

Dell



STATE OF THE FRATERNITY

The leadership of Pi Beta Phi uses the Fraternity's strategic plan to grow the organization, lead the team and model the way. The State of the Fraternity Report provides a brief overview of Fraternity business throughout the fiscal year 2010–2011.

258,334

Total Number
of Pi Phis
Ever Initiated



134 Collegiate Chapters

12,447 Undergraduates

5,718 Women Pledged



320 Alumnae Organizations

23,925 Dues-Paying Alumnae

1,544 Golden Arrows



206 Diamond Arrows



\$308,083

Raised for First Book®

293,407

Hours for Collegiate &
Alumnae Community Service



BOOKS DISTRIBUTED
THROUGH FIRST
BOOK SINCE 2007

2,7

First Book® is a registered trademark of First Book Corporation.

\$213,350 GRANTS



Pi Beta Phi Foundation Grants funded the Leadership Development Consultant program, Leadership Academy and *Leading with Values*® programming

INSTALLED

MARYLAND GAMMA at
JOHNS HOPKINS UNIVERSITY

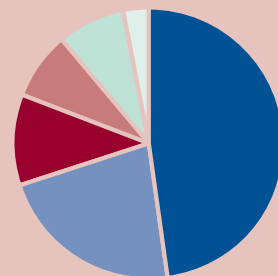


INVITED TO COLONIZE

CONNECTICUT GAMMA at
QUINNIPIAC UNIVERSITY

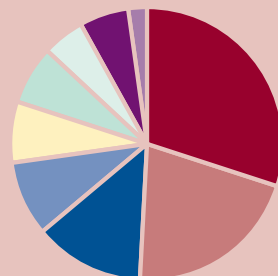


2010 Revenue



Dues and Fees	48%	\$3.52m
Investment Revenue	22%	\$1.6m
Convention and Educational Events	11%	\$773k
Miscellaneous	8%	\$561k
Pi Phi Express® Revenue	8%	\$555k
Grants and Gifts	3%	\$215k

2010 Expenditures



Chapter Support	30%	\$1.82m
Convention and Educational Events	21%	\$1.28m
Administrative	13%	\$811k
Marketing & Communication/ <i>The Arrow</i>	9%	\$586k
Pi Phi Express Merchandise	7%	\$455k
Alumnae Support	7%	\$444k
Membership	5%	\$259k
National Officers	6%	\$376k
Other	2%	\$145k

Revenue and Expenditure charts use unaudited figures for the fiscal year ending June 30, 2011.

Administrative expenses such as salaries and depreciation have been allocated among other categories to departmentalize the expense.

00,000

Welcome to Utah Alpha

In 1961, the Utah Alpha Chapter House Corporation (CHC) purchased a house adjacent to the University of Utah. With approximately 9,200 square feet on just over a quarter of an acre, the building currently houses 21 members. The large great room is comfortable for the daily activities of live-in members while also providing the space necessary for more than 90 members to enjoy weekly chapter meetings.

One of the chapter members' favorite gathering spaces is the dining room. The picturesque window overlooks "Greek Row," and the large dining table provides for an ideal, collegiate social atmosphere.

The Utah Alpha CHC works hard to update the house each summer. This fall, the Pi Phi women were greeted by new furniture for the "T-Room," a TV room named after a beloved house director, Mrs. T. The room is decorated with many awards Utah Alpha has acquired over the years and pays tribute to the University of Utah's colors: red, black and white.

Utah Alpha's CHC was awarded the 2010 Excellence in Chapter House Corporation Service Award at the 68th Biennial Convention because of their alumnae outreach. The CHC realized one of the key reasons they were struggling with their finances was the lack of alumnae support, so they put together a plan to get the Utah Alpha alumnae more engaged. They launched a website where alumnae can view photos of the house, read a blog for current happenings, view the chapter's "Wish List" and donate online.

The Utah Alpha CHC also created a newsletter dedicated to alumnae updates. Featured articles include "Today's Greek Row" at the University of Utah and "A Walk Down Memory Lane" about alumnae's favorite stories of living at the chapter house. They went from almost no support to a steady stream of donations. With such wonderful collegians, volunteers and alumnae, there is no doubt the Utah Alpha Chapter will celebrate many more accomplishments in future years.

○ The Utah Alpha Chapter House



○ The Great Room



○ TV Room



○ Dining Room

Top Five Reasons to Join a Chapter House Corporation

The Fraternity Housing Corporation (FHC) recently surveyed its Chapter House Corporation (CHC) volunteers, who overwhelmingly said their time as CHC members was rewarding to both themselves and to the collegiate chapters they supported. By giving their time, CHC volunteers said they are proud to accomplish these five goals:

1 Provide a Home Preserving the integrity, grace and dignity of the house is very important. But what is even more important to me is that the collegians need to live in a “home,” not just a dorm or institution.



2 Impact Collegiate Life I love knowing I am making a direct impact on the collegians’ daily lives, their food, their rooms and their employees. I want their time in the house to be easy, comfortable, peaceful, beautiful and happy.

3 Be a Role Model It is fulfilling to have a working relationship with other women, and also be a role model of Pi Phi alumnae volunteerism to the collegians.

4 Build Sisterhood It gives you the opportunity to renew friendships from your collegiate years, make friendships with sisters from other years and other chapters and allows you the opportunity to work with the collegians of today.

5 Support Future Generations It’s seeing results and knowing you are caring for a facility that not only holds memories for yourself but for future generations.



For more information on how you can give back to your local CHC, contact FHC Housing Coordinator AARYN WOOLDRIDGE, Arkansas Alpha, at aaryn@pibetaphi.org.

Collegiate Spotlight

Pi Beta Phi honors the Greek community at the University of Alabama, whose members fed the citizens of Tuscaloosa, Alabama, following the deadly tornados this past spring.

On April 27, 2011, a category EF4 tornado struck Tuscaloosa, leveling more than 7,000 homes and killing 47 people. Amidst the devastation and shock, members of the University of Alabama (UA) Greek community led a grassroots relief effort responsible for preparing more than 52,000 hot meals and raising more than \$150,000 in donations in a single week.

UA Greek Relief was founded only hours after the storm hit during a late-night conversation between fraternity men and sorority women at the Delta Kappa Epsilon house. The University had just canceled finals and ended the school year early, which left uncooked food in the Greek houses' kitchens and freezers.

"We realized we could use the food for good because it would just go bad if it sat in the freezers," said James Fowler, Co-Chairman of the UA Greek Relief Board of Trustees. "We contacted all the sororities and fraternities and said 'Drop it by and we'll get it cooked.' The food started coming in by the truckload."

The group started cooking meals in the Delta Kappa Epsilon and Beta Theta Pi kitchens, packing the food into trays and distributing the meals to tornado victims and relief volunteers. The small operation quickly grew to four kitchens, with several additional houses storing food, including Pi Beta Phi's Alabama Beta Chapter house.

"A lot of Pi Phis were there day in and day out, making sure meals got out," James said. "The ladies of the Alabama Beta Chapter were a crucial part of ensuring our success."

Meals were delivered to specific areas based on messages sent via social media, like Facebook and Twitter. "Someone on Twitter would tell us an area was in need of hot meals," said Alabama Beta MALLORY MEISSNER, member of the UA Greek Relief leadership team.

"A lot of people give social media a bad rap, but for us in that week it was how we functioned and why we did so well," Mallory said. "If we were running out of bread to make sandwiches, we would put it out on Twitter, and then we would have 50 loaves in an hour."

The UA Greek Relief accounted for 36 percent of the meals



Alabama Beta Chapter members were proud to prepare meals and clean up tornado damage in Tuscaloosa. From left, Alabama Beta LINDSAY PRUETT, Shayna Bourassa, Alabama Betas RACHEL DOWNING and ELLE BECERRA.

cooked in Tuscaloosa the week following the storm, including more than 10,000 meals in a single day. After food from the Greek houses was exhausted, the group used donations to purchase cooking supplies, which were delivered each day by a semi-truck. The group also started receiving donations of hygiene products, clothes and canned goods, which were distributed with the hot meals.

"We knew we were helping because drivers would load their cars with food, and they would come back and say 'I took the food here, they were so thankful and they could use more,'" Mallory said. "And we would load them back up and say 'go back.'"

While the UA Greek Relief started in the Greek community, the group grew to include non-Greek students, parents, alumni and local volunteers. James credits the group's success to the established communication between Greek chapters, but also to the sense of community between the University of Alabama and the city of Tuscaloosa.

"That's kind of how it is in Alabama and at UA," James said. "We are one family and when something like this happens we all work together."

The UA Greek Relief continues to work with the City of Tuscaloosa to allocate donations to areas of need. To make a donation, visit www.uagreekrelief.com.

ALABAMA

Members of the Alabama Gamma Chapter host “Pi Phiesta” each spring for the Auburn University community. Guests donate used books in exchange for a Mexican food dinner and entertainment performed by a live band. Last spring, the chapter raised more than \$7,000 and collected more than 1,500 books. From left, Alabama Gammas KATIE DAVIS, SOPHIE LEDMAN and LESLIE FRANKLIN collect donations at the event.



CALIFORNIA

The women of California Zeta at the University of California, Santa Barbara served the Isla Vista community through “Adopt-A-Block.” The members kept the city looking its best by picking up litter and monitoring for graffiti. From left, California Zetas LAUREN WESLEY, HANNAH SMITH, ANNA SHANGRAW, KRISTIN PALMER, JULIANNA ROTE and KRISTEN GUTTAS.



CALIFORNIA

The California Mu Chapter from Pepperdine University helped build a new home for a local family. The women spent a day with Habitat for Humanity® carrying planks, putting up walls and painting. From left, California Mus KELLY LARSON, JULIE MORRISON, MACEY ISAACS and ALANA GRAMBUSH.



COLORADO

During her summer break, Colorado Gamma HEATHER HEALY traveled to Kenya to teach English. Many students in the village walked more than three miles each day to attend class. After her eye-opening experience, she decided to pursue a master’s degree in public health. She also plans to work internationally, including a return trip to Kenya this winter. Pictured with Heather is her host family.



ILLINOIS

The Illinois Iota Chapter proudly hosted its first 5K run “Pi Phive K” at Illinois State University. The women received cheers and support from members of the Illinois Eta Chapter who traveled from Millikin University to attend the event.



INDIANA

The women of Indiana Beta sold midnight snacks to Indiana University students at their annual “Pi Burger Phi” event. Between the hours of 10 p.m. to 2 a.m., chapter members, including CARA BUSHEMI, JESSICA BURGET and MEG HAMILL, served hamburgers, soft drinks and chips. The women raised more than \$5,000 for First Book®.



LOUISIANA

The Louisiana Beta Chapter enjoyed volunteering at the Special Olympics on the Louisiana State University campus. The women helped players warm up before events and were cheerleaders during basketball games. Pictured with participants, from left, are Louisiana Betas KATIE PEASLEE, CAROLINE RUIZ, MOLLY MARQUES and GABRIELLE BRAUD.



MICHIGAN

This summer, Michigan Alphas EMILY JOHNSTON (left) and SOPHIA CARR (right) took their Pi Phi values to the nation’s capitol and spread the cause of literacy on the National Mall. The women helped assemble 50,000 summer reading backpacks, each containing three books, for underprivileged children in the Washington, D.C. area. The United Way®, Target® and First Book hosted the event. The women are pictured with a member of the First Book staff.



First Book® is a registered trademark of First Book Corporation.
 United Way® is a registered trademark of United Way Worldwide.
 Target® is a registered trademark of Target Brands, Inc.

MISSOURI

Each year, the Missouri Alpha Chapter at the University of Missouri participates in Relay for Life®. The women spend a 12-hour night walking around Stankowski Field to raise awareness for cancer. Throughout the night, various activities are planned for participants to keep them energized and awake. This year, the chapter was recognized as a 5-Star Team after they raised more than \$1,500 through donations and proceeds of a bake sale.



NEVADA

Each fall, the Nevada Alpha Chapter at the University of Nevada, Reno assembles Thanksgiving dinner baskets for local families who cannot afford to celebrate. Every year the women make 50 baskets complete with all the trimmings including turkeys, vegetables, pies and winter items like blankets, hats and gloves. All the chapter members enjoy making the baskets together and knowing they are helping families during the holidays.



TENNESSEE

The Tennessee Beta Chapter at Vanderbilt University hosted a "Play Day" at their chapter house for children from the Nashville, Tennessee, Boys & Girls Club.

The children participated in games and activities with the Pi Phi women. The chapter partners with the Boys & Girls Club to give young people a safe place to learn and grow. From left, Tennessee Betas LISA GANZ and JESSICA CHAMISH helped with the face-painting booth.



TEXAS

The Pi Beta Phi value of philanthropic service to others is important to members of Texas Alpha. The women from the University of Texas partnered with Zavala Elementary School and its literacy program, Helping One Student to Succeed (H.O.S.T.S.). Each week, dozens of Texas Alphas visited the school for one-on-one tutoring sessions with the children. Pictured with their students, from left, are Texas Alphas EMILIE BIECHLIN, VIRGINIA ENGLISH and KATIE KIRKPATRICK.



2010 Collegiate Awards

The Amy Burnham Onken Award honors a senior member of the Fraternity who has best lived up to Pi Beta Phi's qualities of scholarship, Fraternity service, student activity participation and personality during her college career. The award honors past Grand President **AMY BURNHAM ONKEN**, Illinois Epsilon.



LAURA NELSON
Virginia Epsilon
University of Virginia

Laura was an academic leader for Virginia Epsilon and was chosen as a 2011 Rhodes Scholar. As one of 32 students nationwide, Laura received a scholarship to pursue

post-graduate studies at Oxford University in Oxford, England. She is the founder of University of Virginia's (UVA) acclaimed "Flash Seminars," which organize students and faculty for single-event discussions outside the standard curriculum. Laura also created the weekly "EngageUVA" e-newsletter to share seminars, groups and academic opportunities with her peers. When she was not mentoring her Pi Phi sisters, Laura volunteered for the Center for Nonprofit Excellence in Charlottesville, Virginia, and for the University of Virginia Sexual Assault Board. Laura has instilled a sense of excitement in her chapter and in the student body about learning outside the classroom.

The Chapter Service Award honors an individual who has exhibited meritorious service to her chapter through leadership, responsibility, dependability, initiative and contribution to chapter spirit and unity.

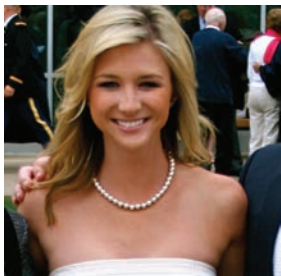


CHRISTINE HUGHEY
Kentucky Gamma
Eastern Kentucky University

Christine served her chapter as an example of servant leadership and as the true embodiment of Pi Phi values. She was unanimously slated

and elected as Chapter President just weeks before recruitment after another member resigned from the position. Because there was no time to fill Christine's Vice President of Membership role before recruitment began, she held both positions until another member was elected. That year, under Christine's upbeat and dedicated guidance, Kentucky Gamma met Panhellenic quota for the first time in many years. After being re-elected for a second term, she was named "Outstanding 2010 Greek President" during her university's annual Greek Week. As a leader, Christine inspired other chapter members and ensured each woman's contributions were recognized and valued.

The Jean Wirths Scott Leadership Award recognizes a junior or senior who has served on Executive Council in an exemplary manner, and, in the performance of her duties, has implemented changes and improvements in her chapter or local Panhellenic community. The award honors past Grand President **JEAN WIRTHS SCOTT**, Pennsylvania Beta.



SARA LINKOSKY
Pennsylvania Epsilon
Pennsylvania State University

Sara is an instrumental leader in the Pennsylvania Epsilon Chapter, as well as the Panhellenic Community at Pennsylvania State University. While serving as Chapter President, Pennsylvania Epsilon was recognized by the University as a Chapter of Excellence and awarded the National Spirit Award. Sara was then elected Panhellenic Council President and led 22 sorority chapters. After an undergraduate male student died on campus because of an alcohol related incident, Sara instituted a program requiring all sororities to have written, detailed risk management procedures. She also introduced two new Panhellenic Executive Board positions to oversee the successful implementation of this program. Additionally, Sara facilitated inter-chapter activities to develop well-rounded sorority women and a unified Panhellenic community.

Congratulations to the 2010 Collegiate Award Winners



The Missouri Alpha Chapter at the University of Missouri was honored with the Balfour Cup, the Fraternity's highest honor for a collegiate chapter. From left, Missouri Alphas JULIE VOSSBRINK and KYLE SCHEITTLER with Grand President MARY LOY TATUM, Oklahoma Beta.

Balfour Cup

Missouri Alpha
University of Missouri

Balfour Cup 1st Runner Up

Florida Alpha
Stetson University

Balfour Cup 2nd Runner Up

Arkansas Alpha
University of Arkansas

Chapters of Excellence — Phi Level

Arkansas Alpha
University of Arkansas
California Mu
Pepperdine University
Colorado Epsilon
University of Colorado,
Colorado Springs
Florida Alpha
Stetson University
Indiana Beta
Indiana University
Kansas Beta
Kansas State University

Missouri Alpha
University of Missouri
Oklahoma Alpha
University of Oklahoma
Oklahoma Beta
Oklahoma State University
Tennessee Beta
Vanderbilt University
Texas Delta
Texas Christian University
Virginia Epsilon
University of Virginia

Beta Level Recognition

California Theta
University of California, Davis
Oregon Alpha
University of Oregon
Pennsylvania Gamma
Dickinson College
Texas Beta
Southern Methodist University
Texas Eta
Texas A&M University
Washington Gamma
University of Puget Sound

Pi Level Recognition

Alabama Alpha
Birmingham-Southern College
Alabama Beta
University of Alabama
Alberta Alpha
University of Alberta
Arizona Gamma
Northern Arizona University
California Alpha
Stanford University
California Beta
University of California,
Berkeley
California Delta
University of California,
Los Angeles
California Gamma
University of Southern California
California Nu
Loyola Marymount University
Colorado Delta
Colorado School of Mines
Colorado Gamma
Colorado State University
D.C. Alpha
The George Washington
University
Illinois Epsilon
Northwestern University
Illinois Zeta
University of Illinois
Indiana Alpha
Franklin College
Indiana Delta
Purdue University
Indiana Gamma
Butler University
Indiana Zeta
Ball State University
Iowa Beta
Simpson College
Iowa Gamma
Iowa State University
Kansas Alpha
University of Kansas
Kentucky Alpha
University of Louisville
Louisiana Beta
Louisiana State University
Michigan Beta
University of Michigan
Mississippi Beta
University of Mississippi
Missouri Beta
Washington University
Missouri Gamma
Drury University
North Carolina Alpha
University of North Carolina
Nebraska Beta
University of Nebraska
Nebraska Gamma
Creighton University
New York Delta
Cornell University
New York Epsilon
Rensselaer Polytechnic Institute
Oregon Gamma
Willamette University
Pennsylvania Theta
Villanova University
Pennsylvania Zeta
Washington & Jefferson College
South Dakota Alpha
University of South Dakota
Tennessee Gamma
University of Tennessee
Texas Alpha
University of Texas
Texas Zeta
Baylor University
Utah Alpha
University of Utah
Virginia Theta
Washington & Lee University
Washington Alpha
University of Washington
Washington Beta
Washington State University
Wisconsin Alpha
University of Wisconsin
Wisconsin Delta
Marquette University
Wyoming Alpha
University of Wyoming

Pi Beta Phi Spirit Awards

California Epsilon
San Diego State University
Indiana Gamma
Butler University
Kansas Alpha
University of Kansas
Louisiana Beta
Louisiana State University
Maine Alpha
University of Maine
New York Eta
New York University
North Carolina Delta
North Carolina State University
Ohio Beta
The Ohio State University
Ohio Iota
University of Dayton
Utah Alpha
University of Utah

Excellence in Academic Mentoring Programming

Kentucky Gamma
Eastern Kentucky University
HM: Alabama Alpha
Birmingham-Southern College

Excellence in Alumnae Advisory Committee Service

Colorado Epsilon
University of Colorado,
Colorado Springs
Indiana Beta
Indiana University
Iowa Gamma
Iowa State University
Kansas Beta
Kansas State University
Kentucky Gamma
Eastern Kentucky University
Nebraska Beta
University of Nebraska
New Mexico Beta
New Mexico State University
Pennsylvania Epsilon
Pennsylvania State University
Texas Beta
Southern Methodist University

Virginia Delta
Old Dominion University
Virginia Epsilon
University of Virginia

Excellence in Appreciation of Fraternity Values

California Mu
Pepperdine University

Excellence in Chapter House Corporation Service

Utah Alpha
University of Utah
HM: Missouri Alpha
University of Missouri

Excellence in Communications

Arizona Gamma
Northern Arizona University
HM: D.C. Alpha
The George Washington
University

Excellence in Community Service/Philanthropy Projects

Illinois Zeta
University of Illinois
HM: D.C. Alpha
The George Washington
University

Excellence in Fraternity Heritage Programming

Michigan Gamma
Michigan State University
HM: Washington Alpha
University of Washington

Excellence in Literacy Activities

Illinois Eta
Millikin University
HM: Alabama Beta
University of Alabama

Excellence in New Member Programming

Indiana Alpha
Franklin College

Excellence in Panhellenic Small & Large

Small: Indiana Alpha
Franklin College
HM: Arizona Gamma
Northern Arizona University
Large: Arkansas Alpha
University of Arkansas
HM: D.C. Alpha
The George Washington
University

Excellence in Pi Phi for Life/Senior Programming

Arizona Beta
Arizona State University
HM: Colorado Epsilon
University of Colorado,
Colorado Springs

Excellence in Recruitment COB

Ontario Gamma
University of Guelph

Excellence in Servant Leadership

Illinois Zeta
University of Illinois

Most Improved Scholarship Award

Fewer than 100 Members:
Colorado Epsilon
University of Colorado,
Colorado Springs

More than 100 Members:
Ohio Iota
University of Dayton

Outstanding Financial Advisor

Kelly Gaulke
California Delta
University of California,
Los Angeles

Scholarship Award Listings

Top 10
California Alpha
Stanford University (3.621)

Virginia Theta
Washington & Lee University (3.570)
Tennessee Beta
Vanderbilt University (3.545)
Virginia Epsilon
University of Virginia (3.500)
North Carolina Beta
Duke University (3.495)
California Mu
Pepperdine University (3.490)
Illinois Zeta
University of Illinois (3.480)
Nebraska Gamma
Creighton University (3.475)
Oklahoma Beta
Oklahoma State University (3.470)
New York Eta
New York University (3.460)

#1 in GPA on Campus

Florida Alpha
Stetson University (3.187)
Michigan Alpha
Hillsdale College (3.310)
Oklahoma Beta
Oklahoma State University (3.470)

Silver Slipper Award — Excellence of a Chapter Vice President of Finance

Monica Ittes
Washington Alpha
University of Washington

Remember

By: FRAN DESIMONE BECQUE, New York Alpha
Fraternity Archivist and Historian

The Balfour Cup

The Fraternity's highest and most prestigious honor, the Balfour Cup, is awarded annually to one chapter.

Both Pi Beta Phi and Sigma Chi have Balfour Awards. Sigma Chi's International Balfour Award, established in 1929, is presented to an outstanding graduating senior member who has given of himself to Sigma Chi Fraternity, his campus and his community. The common thread between the two awards is Lloyd Garfield Balfour.

Lloyd G. "Bally" Balfour was initiated into Sigma Chi's Lambda Chapter at Indiana University in 1904. In 1913, he married Indiana Gamma RUTH DEHASS and chose to start a fraternity jewelry business, L.G. Balfour Company, in Attleboro, Massachusetts. That year, Pi Beta Phi became his first account when his company became the Fraternity's official jeweler.

Ruth, a talented violinist, was an enthusiastic Pi Phi. She and her husband visited many chapters. The Balfours also routinely attended conventions and often provided limited edition convention favors. At the 1918 Charlevoix Convention, Ruth spoke about her musical talents. Sadly, she died the following year after a brief bout of pneumonia brought on by influenza. In 1921, her husband donated the Balfour Memorial Cup, in her memory.

The first winner of the Balfour Cup was the Virginia Alpha Chapter at Randolph-Macon Woman's College in 1921. The chapter was originally the Iota Chapter of Alpha Sigma Alpha, but was released when Alpha Sigma Alpha and Sigma Sigma Sigma formed the Association of Education Sororities, thus restricting their membership to teachers' colleges. The group became the Virginia Alpha Chapter of Pi Beta Phi on May 10, 1913.

The Kansas Beta Delegate at the 1921 Convention noted, "The awarding of the Balfour Cup was the thing that impressed me most at convention. I do not know of any greater honor that could be bestowed upon a chapter than the receiving of this cup. It is not so much the value of the cup itself as the meaning for which it stands and the standards which the chapter would have obtained before receiving it.

I hope my chapter will realize this and strive to win it in the near future."

Until 2005, the Balfour Cup was a traveling award. The traveling cup was replaced periodically if it was damaged in shipping, was lost or started to look shopworn. If a chapter won the cup three years in a

row, the chapter retained permanent possession. Five chapters have accomplished this feat: Michigan Beta 1929–31; Texas Alpha 1942–44; Arkansas Alpha 1945–47 and 2007–09; Kansas Alpha 1954–56; and Oklahoma Beta 1983–85. Kansas Alpha also took top honors in 1957, making it the only chapter to have won four years in a row. Now, a new cup is made each year.

Mr. Balfour re-married in 1921 to Mildred McCann. She had studied at the University of Illinois. They lived in a log cabin on a working farm in Norton, Massachusetts. On November 22, 1933, Mildred became an alumna initiate of Illinois Zeta. Grand President AMY BURNHAM ONKEN, Illinois Epsilon, conducted the ceremony along with chapter officers.

Mr. Balfour served as Sigma Chi's Grand Consul from 1937–39 and helped start its foundation. He served as National Interfraternity Conference Chairman from 1940–41. He won numerous fraternal honors, including a Pi Beta Phi Distinguished Service Award. He died in 1973, and his wife a decade later. A childless couple, they were generous, low-key philanthropists. ↪



Grand President ANNA LYTLE TANNAHILL, Nebraska Beta, with Virginia Alpha MARY MABEL RICHARDSON holding the Balfour Cup at the 1921 Charlevoix Convention.

Angelica, the Foundation Angel, Glows with Gratitude

Angelica came to convention ready to light up with magic — literally, adorned with lights! With her bow and sparkling arrows, she spread the “Magic of Angels” and inspired convention attendees to give to Pi Beta Phi Foundation through tribute halo charms and monthly giving.

Throughout convention, Angelica’s dress, wings and halo would light up on her way to her goal of \$25,000. Angelica’s skirt was already glowing on the first day because of pre-convention giving. On the second day, Angelica’s dress and wings were aglow. As she entered General Session on the third day, she announced Pi Phi had reached \$27,500, surpassing her goal, and lit her halo.

Angelica again challenged attendees to reach a new goal of \$30,000 by the closing session. She tossed in a bit of heartfelt competition when she shared that Pete Smithhisler, President and CEO of the North-American Interfraternity Conference and Foundation Dinner guest speaker, had just attended a women’s convention where they raised \$50,000. Pi Phi responded with enthusiasm and support as members crowded the giving booth to purchase tribute halo charms and sign up for monthly giving.

The closing session began with a sea of bright halos in a dimly lit room and a feeling of anticipation as Angelica stepped on stage. “Pi Phi, let your halos glow!” she said. “We have made our goal!”

The applause and cheering from the audience nearly drowned out Angelica as she announced that the total raised amount was an unprecedented \$55,000 — almost twice the amount raised at Convention 2009. The “Magic of Angels” created convention history for the Foundation. As Angelica thanked the attendees for their generosity and overwhelming support, she asked Pi Phi to continue the magic by giving to the Foundation throughout the year.

Pi Beta Phi Foundation would like to thank Foundation President KATHY SWINEA NEVILL, Tennessee Gamma, for her amazing energy and incredible performance as Angelica, the Foundation Angel.



From left, Foundation Intern AMELIA WENZEL, Texas Delta, poses with Angelica the Foundation Angel KATHY SWINEA NEVILL, Tennessee Gamma, at Pi Beta Phi’s 68th Biennial Convention.

The Magic of Angels

The Foundation experienced the “Magic of Angels” at the 68th Biennial Convention in Orlando, Florida, June 24–28, 2011. With a few surprises and many successes, the Foundation celebrated Pi Phi sisterhood and conveyed its continued commitment to support the Fraternity through the new Foundation Information Center, informative seminars and inspirational speakers.

Foundation Breakfast Honors Philanthropic Leaders

On Saturday, June 25, 2011, Pi Beta Phi Foundation honored their philanthropic leaders at the May Lansfield Keller Breakfast. This special event paid tribute to the service and leadership of Maryland Alpha MAY LANSFIELD KELLER, a pioneer in Pi Beta Phi philanthropy. The event also recognized the dedication and spirit of those leading the Foundation through their personal giving. Foundation President KATHY SWINEA NEVILL, Tennessee Gamma, honored the Evelyn Peters Kyle and Marianne Reid Wild Society members for their philanthropic passion and dedicated service. The Foundation Board of Trustees personally delivered the honorees corsages and recognition pins.



Top: Foundation Ambassador MARY ALICE CLASSEN TINARI, North Carolina Beta, volunteered at the Foundation Giving Booth.

Middle: Convention attendees sent tribute halo charms to honor their special Pi Phi angels.

Bottom: Evelyn Peters Kyle Society and Marianne Reid Wild Society members were honored with corsages and pins at the Foundation's May Lansfield Keller Breakfast.



Foundation Trustee honored with the May Lansfield Keller Award for Philanthropic Leadership

New Mexico Beta BIMI LANE HUEBNER received the inaugural Pi Beta Phi Foundation May Lansfield Keller Award for Philanthropic Leadership at the Wine Carnation Banquet. Foundation President KATHY SWINEA NEVILL, Tennessee Gamma, thanked Bimi for her six years of service as a Board of Trustees member. Kathy spoke eloquently about the impact Bimi has had through her philanthropic service, at both the national and the local level.

Bimi's service to the Foundation began in 2005 as an Ex-Officio Trustee during her term as Grand Vice President Programming for the Fraternity. Bimi was instrumental in creating the Fraternity's literacy vision and partnership with First Book®, and she was a leader in bringing the Foundation to the table to support this new partnership. In 2007, she was appointed to the Foundation Board of Trustees to complete an interim term and in 2008 she was elected to a three-year term on the Board. As both an ex-officio and an elected member of the Board, Bimi has never failed to step forward, advocate for important issues and meet the needs of Pi Beta Phi. Her Board service includes four years as Secretary as well as Chair of the scholarship program.

A key criteria when selecting the May Lansfield Keller Award for Philanthropic Leadership is volunteer service with organizations beyond Pi Beta Phi. Bimi shines in this arena, as well. She has worked with her local Susan G. Komen Race for the Cure® affiliate as both Board member and advisor for the past 10 years, including serving as Race for the Cure Chair, Outreach and Development Chair, Nominating Committee member and Governance Chair. She begins a two-year term as President of the affiliate this November.

Bimi also served on the Steering Committee and as Volunteer Co-Chair for the Tucson Festival of Books. In just its third year, the festival attracted an estimated 100,000 attendees. It is the fourth largest book festival in the country.

"Bimi truly exemplifies the spirit of May Keller, who forged Pi Beta Phi's philanthropic vision nearly 100 years ago, while also being an accomplished philanthropic leader outside of Pi Beta Phi," Kathy said. "As a Board, we couldn't think of a more fitting inaugural recipient for this award than Bimi."



Foundation Trustee BIMI LANE HUEBNER, New Mexico Beta, recipient of the Foundation's May Lansfield Keller Award for Philanthropic Leadership.

Foundation Sends Well Wishes

The Foundation sends well wishes for the continued recovery of Tennessee Gamma PEGGY WILSON LAWRENCE, Foundation President from 2009–2011, who was unable to attend convention because of emergency surgery. Her vision and leadership helped make this convention a success. We missed having her in person, but her presence was felt throughout the weekend. We look forward to having her back around the Trustee table soon.



Tennessee Gamma PEGGY WILSON LAWRENCE

Foundation Reception Honors the Top 10 Chapters and Alumnae Organizations

The Foundation honored the top 10 chapters and alumnae organizations with a reception Sunday night, June 26, 2011. The evening began in celebratory fashion as leaders of chapters and alumnae organizations filled the room. Foundation President KATHY SWINEA NEVILL, Tennessee Gamma, and Foundation Executive Director Teri Chadwick thanked the chapters and alumnae organizations for their generosity and service to the Foundation. Certificates were presented to each alumnae organization and chapters were honored with plaques. To view the list of top 10 chapters and alumnae organizations, visit www.pibetaphifoundation.org.



The top 10 chapters were honored at the Foundation's Top 10 Reception during convention.

Distinguished Foundation Partner Award Announced

The Foundation honored Michael A. Ferris with the inaugural Distinguished Foundation Partner Award at the Wine Carnation Banquet on June 27, 2011. An investment advisor to the Foundation Board of Trustees for 20 years, Michael was recognized for his dedication, counsel and valued partnership. ↪

The Foundation's 20th Anniversary Year in Review

Pi Beta Phi Foundation's 20th anniversary year ended on a celebratory note. The Foundation's State of the Entity report, highlighted during convention, addressed the many successes over the past two years, including:

- Pi Beta Phi Foundation is ranked ninth among National Panhellenic Conference member foundations. According to the report "State of Our Industry," presented by Pennington and Company at the 2011 Institute for Greek Advancement, the Foundation continues to progress up the ranks in asset size, fundraising efficiency ratio and program services by chapter. These key benchmarks show the Foundation is successfully establishing itself as a premier nonprofit among Greek foundations.
- Texas Alpha ANN DUDGEON PHY accepted a permanent designation as Foundation President Emerita in June 2010.
- Pi Beta Phi Foundation awarded 108 Pi Phi women with scholarships and fellowship awards for the 2011–2012 academic year. A total of \$229,100 in scholarships and fellowships was awarded, the largest amount in Foundation history.
- The Foundation exceeded \$1 million in programs and services during fiscal year 2010–2011, a real accomplishment for a Foundation so young. In just 20 years, the Foundation has provided more than \$9.3 million in programs and services through funding for education, leadership, philanthropy and heritage.

Good Government Needs Greeks

Pi Beta Phi is working hard with other Greek organizations to build strong and secure relationships with our United States legislators.

Building a Greek Presence in Washington D.C.

The Capital Fraternal Caucus (CFC) includes the 75 member fraternities of the North-American Interfraternity Conference (NIC) and the 26 member sororities of the National Panhellenic Conference (NPC). The CFC works to educate members about legislative initiatives in the U.S. Congress that sustain and grow Greek life, while also advocating for those issues in Washington, D.C.

Each year, members of the Greek community gather in Washington to meet with members of Congress, both Republicans and Democrats. Through discussions with policymakers about the following initiatives, the CFC and Pi Beta Phi are ensuring Greeks have a prominent voice when legislation impacts the fraternity world.

Collegiate Housing and Infrastructure Act

Fraternities and sororities are the largest providers of not-for-profit student housing outside of universities and colleges.

The Collegiate Housing and Infrastructure Act (CHIA) would allow tax-deductible charitable contributions to fully fund maintenance, improvements and new building projects for fraternity and sorority housing. Currently, Greek organizations can only partially fund housing projects using tax-deductible donations. To qualify for this funding, the housing projects must be purely educational, such as for libraries, computer wiring or study facilities. However, colleges and universities are allowed to fund 100 percent of their student housing projects with tax-deductible donations. Passing CHIA would erase this disparity.

If CHIA is passed, our members could make tax-deductible contributions to Pi Beta Phi Foundation designated for a specific Chapter House Corporation (CHC). These funds could then be used to fund infrastructure upgrades and safety improvements to existing chapter houses. Many Pi Phi housing facilities are in need of major improvements.

As of September 1, 2011, in the 112th Congress, we have 75 co-sponsors in the House and 19 co-sponsors in the Senate. CHIA needs a majority sponsorship in both the House and the Senate to become law.

The Fraternity and Sorority Political Action Committee

The Fraternity and Sorority Political Action Committee (FSPAC) gives Greek organizations a year-round presence in Washington. The bi-partisan organization provides financial aid to the campaigns of federal office candidates who support the objectives of fraternity life. By supporting these political leaders, Greek organizations are advocating policies that improve the experiences offered to collegiate and alumnae leaders.

Throughout the year, the FSPAC holds fundraising events to connect with donors and members. Pi Beta Phi members rank 13th among NPC groups in total contributions to the organization. Since 2005, the FSPAC has made contributions to a bi-partisan slate of more than 100 candidates, and more than 90 percent of those candidates won their elections.

Freedom of Association

Freedom of association has long been recognized by federal courts as being rooted in the constitution's First Amendment, protecting freedom of speech and assembly.

In particular, the United States Supreme Court has recognized freedom of association as implying the right not to associate with those who do not share a group's ideals. As a result, courts recognize two types of groups that may enforce their freedom of association rights: intimate associations and expressive associations.

Intimate associations are generally small, have a high degree of selectivity regarding decisions to begin and maintain their affiliation and exclude non-members from critical aspects of their relationship. A well-run Pi Beta Phi chapter qualifies as an intimate association.

Courts have also recognized expressive associations as those engaging in other activities protected by the First Amendment, such as speech, assembly, the exercise of religion and the petitioning for the redress of grievances. Fraternity chapters may qualify as expressive associations based on advocacy of philanthropic activity or student organizational rights.

As a private organization, Pi Beta Phi, along with other fraternal groups from the NPC, NIC and

the National Pan-Hellenic Council (NPHC), have a common interest in advocating for their members' rights to free speech and members' rights to determine membership based on mutual agreement between an individual candidate and collegiate chapter.

Single-Sex Status

While federal law specifically recognizes the rights of fraternities and sororities to discriminate in their membership policies on the basis of sex (20 USC 1681 (a) (6)), some recent court decisions have upheld regulations by state universities that denied recognition to student organizations because the organizations discriminated in their membership policies.

Pi Beta Phi continues to maintain that its single-sex status is defensible based on the constitutional right of freedom of association. Since Pi Beta Phi membership is restricted to females, chapters may not have a category of association for men, such as "Arrowmen," "brothers" or "sweethearts." These relationships can be inherently sexist in nature, creating environments of sexual harassment that can detract and conflict with member obligations in Pi Beta Phi.

Pi Beta Phi supports the NPC Resolution and NIC Statement of Position regarding single-sex status, and has recently revised the Pi Beta Phi Policy and Position Statement on Associate Membership Relationships with Men or Men's Fraternities. These resolutions reaffirm our constitutional rights. Pi Beta Phi also supports the NPC resolution that sorority women are to refrain from participating in any recruitment events for men's organizations, as well as prohibiting men from participating in sorority recruitment, so as not to compromise the single-sex status of membership.

Make Your Voice Heard

- Ask your local legislators to support CHIA. To learn how, visit www.fraternalcaucus.com.
- Donate to the FSPAC to help elect Greek-minded legislators at www.fspac.org.
- View the latest updates on CHIA's congressional support and other details on the "Government Initiatives" website at www.pibetaphi.org. ↪

Pi Phi Lobby on Capitol Hill

Each spring, Pi Phi sends a delegation of National Officers and collegiate representatives to Capitol Hill. The Pi Phi women — part of more than 200 collegiate and alumni members from other NPC, NIC and NPHC groups — meet with Representatives, Senators and congressional staff members to lobby for the passage of CHIA.

After arriving in Washington, D.C., the Greek men and women spend several days training with professional lobbyists to practice conversation talking points and learn in-depth details about CHIA. The team then spreads out on the Hill for one day to meet with legislators. The Greek members visited more than 415 offices this past April.

"The meetings focused on the benefits of passing CHIA, but also touched on the ways Greek life benefits universities and their students," said Mississippi Alpha KASEY MITCHELL, a Pi Phi collegiate delegate in 2011 and current Leadership Development Consultant.

"I saw the big picture and what an influence, in a positive way, Greeks have," Kasey said. "We can overcome stereotypes and perceptions to work together on awesome causes that really can make a difference."

Interested in joining Pi Phi's lobbying team in Washington, D.C.? Submit your resume to Pi Phi's NPC Delegate at npcd@pibetaphi.org by November 15, 2011.



Pi Phis traveled to Washington, D.C., in April to lobby for the passage of CHIA. From left, Mississippi Alpha KASEY MITCHELL, Nebraska Beta BRENDA BUTLER, Illinois Epsilon LEAH PATTERSON and Maryland Gamma ELIZABETH DUVAL at the 2011 Congressional visit.

IN HER WORDS



LEANNE FORD
OHIO ALPHA

PI PHI TAUGHT ME ...

"After living with my Pi Phi sisters in the house ... I learned to always be patient."

IN A NUTSHELL ... TELL US ABOUT YOU

I'm a fashion stylist. I pick out clothes and dress people for photo shoots. I work on magazine editorials, ad campaigns, album covers, music videos and award shows. My work has been featured in publications like Rolling Stone, InStyle and Seventeen Magazine. You can see my portfolio at www.leanneford.com.

ADVICE FOR UP-AND-COMING PROFESSIONAL WOMEN

GIVE US A PEEK INSIDE YOUR TYPICAL DAY

Up before sunrise, toting bags and boxes of clothing into a wardrobe trailer, dressing models and making them feel beautiful, happy and comfortable. This day could be on a glacier in Alaska or in a jungle in Costa Rica.

FAVORITE WORKPLACE EXPRESSION

"Love it!" It's always great to hear onset while working as a team to make a beautiful picture.

MOST TREASURED POSSESSION

A framed Post-it note from my dad saying he loves me.

WHO INSPIRES YOU?

My friends! I love to powwow and think of new ideas with creative souls.

BEST ADVICE YOU'VE EVER RECEIVED:

My dad always said, "Don't major in the minors." Concentrate on the big dreams and goals — don't get caught up in all the little problems.

FAVORITE QUOTE

"So you wanna be a rock'n'roll star? Well listen now to what I say, just get an electric guitar, take some time and learn how to play." — The Byrds

Left Brained Right Brained

Heels Flats

iPhone Blackberry

a.m. coffee a.m. tea

Hours a week 40+ 50+ 60+

PICK A GOAL, WRITE IT DOWN AND MAKE A GAME PLAN.

Friendship and Philanthropy Drive Pi Phi Satisfaction

Pi Beta Phi is equipped with a tool to ensure we are meeting the needs of members: your opinion. In early 2011, the Fraternity distributed a Membership Satisfaction Survey to all members. More than 2,300 Pi Phis from 19 to 95 years of age responded to the survey.

The survey questions touched on key Fraternity values and programming, with specific questions for collegians and specific questions for alumnae. Survey results overwhelmingly showed Pi Phis are most satisfied with two aspects of the Fraternity: friendship and philanthropy.

Relationships with other sisters are important to Pi Phis. Collegians are most satisfied with their big sis relationships, as well as relationships with other chapter members. Alumnae reported two different motivations for engaging with Pi Phi sisters: fun and fellowship for older alumnae and networking for younger alumnae. Furthermore, the greater the role of friendship plays in engaging an alumna, the greater her overall satisfaction with the Fraternity.

“To summarize the results of the survey regarding philanthropy, we might simply say: Pi Phis think philanthropy is awesome,” said Dr. Andrew Ledbetter, Assistant Professor of Communication Studies at Texas Christian University, who helped Grand Council dissect and understand survey data. In fact, Pi Phis are more satisfied with the Fraternity’s philanthropy efforts than any other Fraternity effort. The survey also indicated a desire to closely align Fraternity literacy initiatives and local literacy service, with support for both through Pi Beta Phi Foundation.

The survey also identified areas of potential growth for the Fraternity. In particular, collegians living in Pi Phi housing are less satisfied than collegians living elsewhere. Survey results clearly showed collegians are satisfied with housing in the areas of privacy, safety, cost and food, whereas satisfaction was less in the areas of available technology, cleanliness and décor. However, alumnae who lived in Pi Phi housing are more satisfied with their collegiate experience. Dr. Ledbetter suggested this disparity may be because older alumnae look back fondly on their collegiate experience. The Fraternity will look closely at this trend to determine the root of the collegiate housing challenge.

Collegiate programming is another area returning significant results. “The more a collegian is involved, the more she is satisfied,” Dr. Ledbetter said. Survey data showed Pi Phi collegians are most satisfied when involved in nine hours of programming per week. More than nine hours of programming leads to dissatisfaction. However, it is important to note there is no point at which philanthropic involvement leads to a feeling of being over programmed.

Grand Council strongly considered the findings of the survey while updating the Fraternity’s Strategic Plan this past August. Pi Beta Phi values the input of its members and encourages all Pi Phis to respond to future surveys. The next Membership Satisfaction Survey will be offered in the spring of 2015. ↪



Alumnae engage with Pi Phi sisters for fun and fellowship.



Pi Phis are more satisfied with the Fraternity’s philanthropy efforts than any other Fraternity effort.



To view the results of the Membership Satisfaction Survey, visit www.pibetaphi.org.

Alumnae Spotlight

Kansas Beta LINDSAY SLAVENS RUSSO is giving homeless children from India a place to call home. Since founding the Angel House Rescue Orphanage with her husband in 2010, Lindsay has helped feed, clothe and school 176 children.

Lindsay felt a deep connection to the diverse country from her first humanitarian trip to India. Though her group had finished their projects, Lindsay wished to visit an orphanage before returning to the United States. She was taken to the back room of a local couple's house, the "orphanage," where meals were served each day to 80 children — all under the age of 12.

As Lindsay watched the children eat, she learned many walk several miles from the ghetto for this one meal. No one knew if the children returned to family at the end of the day or wandered the streets without shelter or supervision.

"My heart immediately broke for those kids, and I knew we had to do something about it," Lindsay said. "In that moment, I knew I was supposed to build them a house."

While at Kansas State University, Lindsay learned to not only be thankful for what she has but to give back selflessly to those in need. During college, Lindsay and her Pi Phi sisters participated in philanthropic events like 5K runs and dance-a-thons. "I had never felt so fulfilled in all my life," Lindsay said. "Knowing that I was part of an organization like Pi Beta Phi, which was giving back in a massive way, felt great."

Inspired by her Pi Phi experiences, Lindsay named her new organization Angel House. "Equipping these kids with education, leadership and vocational training and a loving family is aligned exactly with the core values of Pi Beta Phi," Lindsay said.

The first Angel House opened in December 2010 to an eager group of 50 children. In just nine months, Lindsay and her husband — with the help of family and friends, including the Kansas Beta Chapter — raised more than \$35,000 to build the first home.

Lindsay remembers the ribbon-cutting ceremony on that December morning as one of the best days of her life. "My heart was beating a thousand miles a minute," Lindsay said. "I couldn't believe I was going to see with my eyes what I had seen in my heart the whole time." Lindsay and her husband



Kansas Beta LINDSAY SLAVENS RUSSO founded the Angel House Rescue Orphanage. Since 2010, the organization has built six homes in India.

were greeted by smiling children who immediately ran to the couple to give them flowers and hugs.

Throughout the day the children were showered with gifts like shoes and pillows, both considered luxury items for the local town. Many of these gifts came from the Kansas Beta Chapter, which adopted the children for their Christmas fundraiser.

With a new goal to build 100 Angel Houses in India, Lindsay appeared on the NBC game show "Minute to Win It" with a childhood friend in January 2011. The women not only won \$250,000, but also shared the mission and goals of Angel House on national television.

There are now six operating Angel Houses throughout India, with another five groundbreaking ceremonies planned for this year. Seeing the joy the children have in their new homes helped Lindsay realize she wants to grow the organization for the rest of her life.

"Angel House is the happiest experience of my entire life," Lindsay said. "I am very determined to keep it going and see how many kids we can save from the streets."

To learn more about Angel House, please visit www.angelhouse.me.

CALIFORNIA

California Eta TONI MARTINOVICH joined First Book® staff for a pirate-themed book party, held at a Los Angeles school. The children received pirate books and CDs, played games, listened to stories and had their pictures taken dressed up as pirates. Students also participated in a drawing contest and essay contest with the winners receiving extra prizes.



Members of the Conejo Valley, California, Alumnae Club were thrilled with the success of their first Champions are Readers® (CAR) program in a local third-grade classroom. The students enjoyed tracking their reading progress and receiving medals on the final day. Indiana Delta JANE LEE BEAMS (left), Nebraska Beta SKIP HARRIS SHAVER (right) and Ohio Zeta NANCY ARMSTRONG GRAVES (back) are pictured with their students. The club plans to hold a second CAR program this year.



First Book® is a registered trademark of First Book Corporation.
Champions are Readers® is a registered trademark of Pi Beta Phi Fraternity for Women.

COLORADO

Members of the San Juan, Colorado, Pocket gathered in Durango, Colorado, for a luncheon in tribute of their Golden Arrows. Each Golden Arrow was presented with a hand-painted nail file featuring an angel.



FLORIDA

Florida Alphas KATELYN WHITNEY (left) and EMILY SAWYER (right) received their One-Year Service Award from Jaime Estremera-Fitzgerald, CEO at the Area Agency on Aging in West Palm Beach, Florida. Katelyn coordinates the recruitment, placement and training of volunteers aged 55 and over in local nonprofit groups. Emily recruits and trains volunteer tutors for special needs elementary school children. Both women credit Pi Beta Phi for their interest in community service and philanthropic service to others.



ILLINOIS

Members of the Chicago South Suburban Pocket, dressed in wine and silver blue, celebrated Founders' Day at Olympia Fields Country Club. From back left, Indiana Epsilon JOAN ZACHARIAS SCHEEL, Illinois Eta CHARLOTTE BEESLEY MOOREHEAD, Kansas Alpha KIMBERLY PAYNE, Illinois Beta-Delta PATRICIA MARTIN JOHNSTON and Illinois Zeta GAYLE MCCULLOUGH FAZZINI. From front left, Illinois Zeta CAROL MANGIERI EKDAHL and Virginia Gamma LUCILLE HAYNES WAGENER, a Diamond Arrow 75-year member.



MISSISSIPPI

Mississippi Alphas TORI CARTER CRUM (left) and CRISTINE BREERWOOD RAINES (right) helped organize the donation of more than 900 pairs of shoes to a Hattiesburg, Mississippi, elementary school. Local residents gathered both new and used shoes and a local furniture store provided plastic containers for each pair. Letters of encouragement, written by donating children and families, accompanied many of the shoes. The shoes will be distributed to low-income families throughout the school year.



NEW YORK

Pi Phis gathered to celebrate the goth birthday of Illinois Alpha ELEANOR TURNBULL SASSANO, granddaughter of founder JENNIE HORN TURNBULL. From back left, Eleanor's daughter and Maryland Beta PATRICIA SASSANO VANDERHEIJDEN, Washington Beta SUZANNE BURCHARD HEWITT, Iowa Gamma JUDITH FRIEND STROHM and Michigan Gamma GAYLE BADLEY MIMNAUGH. Seated from left are New York Gamma MARIAN FINCK MOORE and Illinois Alpha ELEANOR TURNBULL SASSANO.



OHIO

Members of the Cincinnati, Ohio, Alumnae Club gathered to celebrate the retirement of Ohio Zeta SANDRA WISWELL HARTE. Many of the women have been members of the club since the 1970s. From left, Illinois Alpha BARBARA SPRAGUE ABERLIN, Virginia Gamma BARBARA SMITH MACTAGGART, Ohio Epsilon ANNE SEUFERT FEUER, Tennessee Gamma RACHEL JINKS FOSTER, Ohio Delta NANCY WHITE WHITE, Ohio Zeta SANDRA WISWELL HARTE, Indiana Delta MARY ANNE BATES KINGERY, Illinois Epsilon CAROLYN HUWE LUDWIG, Indiana Gamma MAUREEN PLEAK BREEN, Ohio Epsilon JUDY DOUGLAS OVERSTREET and Indiana Delta CAROLINE HUNTER ECKLER.



PENNSYLVANIA

In April, the Philadelphia-Main Line Alumnae Club hosted its 36th annual “Phillies Fun Night” at Citizens Bank Park, raising more than \$5,000 for the Epilepsy Foundation of Eastern Pennsylvania.

Proceeds fund scholarships to Camp Achieve, a weeklong camp for children and young adults afflicted with epilepsy. Pictured with the Phillie Phanatic, from left, Virginia Eta DONNA BUTTERWORTH, Iowa Zeta JEANNE NIEMEIER LEBUHN, Colorado Alpha SALLY BROWN ROBIE and Arizona Alpha TONY SONKA KASZNEL. The club fundraises for the Epilepsy Foundation in honor of Peter LeBuhn, son of Jeanne, who has suffered from epilepsy since childhood.



2010 Alumnae Awards



GINA GARRISON WHITESIDE
Nebraska Gamma
University of Nebraska
Phoenix Alumnae Club

The Emma Harper Turner Leadership Award honors a member of the Fraternity whose exceptional leadership contributed to the success of her alumnae club. The award honors D.C. Alpha EMMA HARPER TURNER who established the Alumnae Department in 1893.

Gina revamped the Phoenix Alumnae Club communication and marketing pieces while serving as Vice President of Membership for three years. The club grew by 40 percent in a single year as a result of Gina's outreach, which included an updated membership form and a brand-new membership survey. She also rejuvenated the club's programming by creating two tiers of events: signature events such as themed socials and monthly events such as Fraternity Day of Service. Under Gina's leadership, including serving as Co-President for two years, the club was named a Club of Excellence and received the Premier Club Award in 2007.



DONNA ZAY BURGARD
Indiana Gamma
Butler University
Indianapolis Alumnae Club

The Evelyn Peters Kyle Angel Award for Club Service is presented to an alumna who has performed duties that often go unrecognized but which enhance the success of an alumnae organization. The award honors Illinois Alpha EVELYN PETERS KYLE who gave more than 75 years of service and leadership to the Fraternity.

Donna has been the heart and soul of the Indianapolis Alumnae Club while serving in a variety of positions for more than 30 years. She played an integral role in the maintaining and redecorating of the Butler University Chapter house while serving as Chapter House Corporation President in the early 1980s. Donna also helped organize the club's kick-off meeting held at the Indiana Governor's Mansion in 2000. Recently, Donna headed the club's successful Champions are Readers® program and helped raise \$1,500 worth of free books by organizing Pi Phi volunteers at local Scholastic Books® warehouse sales.



JOAN HESS ANDERSON
Oklahoma Alpha
University of Oklahoma
Oklahoma City Alumnae Club

The Young Alumna Achievement Award honors an alumna who graduated college within the last 15 years and has demonstrated a lifelong commitment through her involvement as an alumnae club member, Alumnae Advisory Committee member or Chapter House Corporation member or other community leadership.

Joan cares deeply for Pi Beta Phi and has high expectations for herself and for the Oklahoma City Alumnae Club. Joan worked as a Leadership Development Consultant after graduating from the University of Oklahoma in 2004, where she served as Chapter President. She has since demonstrated exemplary club leadership, including serving as President. Under her leadership, the club received the Premier Club distinction. She is also a committee member for the club's annual fundraising event, "The Gathering of Angels," which had more than 550 attendees this year. Concurrently, Joan has worked for several professional events including Oklahoma's centennial celebration, the U.S. Open Golf Championship and the Super Bowl.



FRAN DESIMONE BECQUE
New York Alpha
Syracuse University

The Dorothy Weaver Morgan Award for Fraternity Loyalty is presented to a collegian, chapter, alumnae club or alumna who is loyal to the Fraternity above and beyond even the highest expectation. The award honors past Grand President **DOROTHY WEAVER MORGAN**, Nebraska Beta.

Fran, Pi Beta Phi's Historian and Archivist, exemplifies Fraternity loyalty. Fran's commitment to Pi Phi is seen in the attention and detail with which she protects our precious archival items, her vast knowledge of our history and her ability, at a moment's notice, to recall wonderful facts about any subject concerning the Fraternity. She is the author of Pi Beta Phi's coffee table book, "Hearts That Are Bound by the Wine and Silver Blue." She was also the winner of the 1979 Chapter Service Award. During the past 30 years, Fran has served in many Fraternity roles including Director of Undergraduate Programming, Director of Academics and Director of Fraternity Education, and as a member of the Gatlinburg Study Committee, the Legacy of Literacy Committee and the Holt House Committee. This year, she spent nearly a week in the archives at Arrowmont sorting through the records and items uniquely belonging to the Fraternity's early Settlement School period. Fran is involved in many current Fraternity projects, including maintaining our archives and contributing to each issue of *The Arrow*®.



BARBIE OLIVER TOOTLE
Ohio Beta
The Ohio State University

The Member of Distinction Award honors and recognizes a member of the Fraternity who has distinguished herself and who has achieved success and recognition within her profession.

As President of Left Field Consulting, Barbie provides training in creativity and organizational development, consultation in communication strategies and speech writing services. For 14 years, she was Special Assistant to the President of The Ohio State University (OSU). Earlier, she spent 11 years as OSU's Coordinator for Greek Affairs, working with 63 fraternities and sororities. An OSU graduate, Barbie holds a bachelor's degree in business administration and a master's degree in sociology. Along with past Grand President SARAH RUTH "SIS" MULLIS, South Carolina Alpha, she was co-winner of the 1965 Amy Burnham Onken Award. Barbie is a founding member and past national President of the Association of Fraternity Advisors and a member of the Board of Directors of Order of Omega honor society. She has received many national awards for her service to Greek organizations. In 2000, the OSU Varsity Women's Alumnae Society established the Barbie Tootle Buckeye Spirit Award, given annually to honor individuals who have demonstrated unconditional loyalty and support of women's athletics at OSU. In July 2007, former students surprised Barbie by raising funds to name a room in her honor in the new Ohio Union. She received OSU's Distinguished Service Award in 2008.



CAROL INGE WARREN
 North Carolina Beta
 Duke University

The Service in Sisterhood Award is given to an alumna member of Pi Beta Phi who puts the needs and goals of the Fraternity first and above all, has served above the local level with loyalty and effectiveness, and is an advocate, role model and mentor to chapter and Fraternity officers. The award honors past Grand President **SARAH RUTH “SIS” MULLIS**, South Carolina Alpha.

Carol is a leader who is dedicated to high standards, service and a strong sense of social responsibility. In her 29 years of service to Pi Beta Phi, Carol has served as Alumnae Province President, Director of Alumnae Records, Grand Secretary, Grand Vice President of Finance, Grand Vice President of Membership and National Panhellenic Conference (NPC) Delegate. Carol is also a charter trustee of Pi Beta Phi Foundation and served as the Foundation’s Secretary and Treasurer. She is best known for her knowledge and understanding of all aspects of finance. Each year an award named in Carol’s honor is presented to the most outstanding Alumnae Advisory Committee Financial Advisor. Carol has also guided and inspired collegians, alumnae and the NPC community during her 14 years of service to NPC. She played an instrumental role in the colonization and installation of eight collegiate chapters. Commitment, dedication, dependability, leadership, service, responsibility, loyalty and devotion ... all words used by those who know Carol when asked to describe her.



The Friend of Distinction Award recognizes non-members who support Greek initiatives and are distinguished friends to the Fraternity or the Greek world.

In honor of retiring National Panhellenic Conference Delegate **CAROL INGE WARREN**, North Carolina Beta, Pi Beta Phi awarded the 2011 Friend of Distinction Award to our 25 National Panhellenic Conference sister organizations.

- | | | | |
|-------------------|-------------------|-------------------|-------------------|
| Alpha Chi Omega | Alpha Sigma Tau | Gamma Phi Beta | Sigma Kappa |
| Alpha Delta Pi | Alpha Xi Delta | Kappa Alpha Theta | Sigma Sigma Sigma |
| Alpha Epsilon Phi | Chi Omega | Kappa Delta | Theta Phi Alpha |
| Alpha Gamma Delta | Delta Delta Delta | Kappa Kappa Gamma | Zeta Tau Alpha |
| Alpha Omicron Pi | Delta Gamma | Phi Mu | |
| Alpha Phi | Delta Phi Epsilon | Phi Sigma Sigma | |
| Alpha Sigma Alpha | Delta Zeta | Sigma Delta Tau | |

Congratulations to the 2010 Alumnae Award Winners



The Oklahoma City, Oklahoma, Alumnae Club was honored with the Premier Club Award, the Fraternity's highest honor for an alumnae organization. From left, Missouri Gamma MILLONN WILSON LILLY, Oklahoma Alpha BETTY STAGGS HUCKABAY, Oklahoma Beta HANNAH GEIS and Texas Gamma CHRIS MILLS VERITY.

Premier Club

Oklahoma City, Oklahoma

Premier Club 1st Runner Up

Phoenix, Arizona

Premier Club 2nd Runner Up

Denver, Colorado

Clubs of Excellence

Region One

Bostonian, Massachusetts

Chesapeake, Maryland

Nation's Capital-D.C.

Northern New Jersey

Northern Virginia

Philadelphia-Mainline, Pennsylvania

Richmond, Virginia

Southern Fairfield County, Connecticut

Region Two

Alpharetta, Georgia

Atlanta, Georgia

Brevard County, Florida

Columbia, South Carolina

Deland, Florida

Hattiesburg, Mississippi

Nashville, Tennessee

North Carolina Triangle

Sandhills, North Carolina

Region Three

Arlington Heights, Illinois

Chicago-Windy City, Illinois

Glen Ellyn-Wheaton, Illinois

Indianapolis, Indiana

Minneapolis, Minnesota

Region Four

Dallas, Texas

Fort Worth, Texas

Houston, Texas

Kansas City, Missouri-Shawnee

Mission, Kansas

Katy-West Houston, Texas

Lawrence, Kansas

Oklahoma City, Oklahoma

Richardson-Plano, Texas

Southlake Area, Texas

St. Louis, Missouri

Tulsa, Oklahoma

Region Five

Aurora, Colorado

Bellevue-Eastside, Washington

Colorado Springs, Colorado

Denver, Colorado

Evergreen, Colorado

Lake Oswego-Dunthorpe, Oregon

Portland, Oregon

Seattle, Washington

Region Six

Albuquerque, New Mexico

Central Orange County, California

La Jolla, California

Long Beach, California

Palo Alto, California

Pasadena, California

Phoenix, Arizona

San Jose, California

South Bay, California

South Orange County, California

Tucson, Arizona

Clubs of Superior Performance

Region One

Tidewater, Virginia

Region Two

Lowcountry, South Carolina

Orlando-Winter Park, Florida

Region Three

Champaign-Urbana, Illinois

Des Moines, Iowa

Region Four

Arlington, Texas

Austin, Texas

Cypress Creek-Northwest

Houston, Texas

Denton, Texas

East Fort Bend County, Texas

McKinney Area, Texas

Springfield, Missouri

Stillwater, Oklahoma

Tyler, Texas

Wichita, Kansas

Region Five

Boise, Idaho

Edmonton, Alberta

Highlands Ranch, Colorado

Salt Lake City, Utah

Region Six

Arrowhead-West Phoenix, Arizona

Conejo Valley, California

Contra Costa, California

North San Diego, California

Palm Springs-Desert Cities, California

San Diego, California

San Francisco, California

San Mateo County, California

South Coast, California

Valley of the Moon, California

Clubs of Traditional Performance

Region One

Baltimore, Maryland

Buffalo, New York

Harrisburg-Carlisle, Pennsylvania

Hartford, Connecticut

Manchester Area, Connecticut

New York City-Manhattan, New York

Pittsburgh-South Hills, Pennsylvania

Potomac Falls, Virginia

Rochester, New York

Southern Maine

Region Two

Augusta, Georgia

Birmingham, Alabama
 Charlotte, North Carolina
 Chattanooga, Tennessee
 Clearwater, Florida
 Forrest City, Arkansas
 Greater Charleston, South Carolina
 Indian River County, Florida
 Lexington, Kentucky
 Little Rock, Arkansas
 Louisiana Northshore
 Memphis, Tennessee
 Montgomery, Alabama
 Naples, Florida
 Pensacola, Florida
 Richmond Area, Kentucky
 Sarasota-Manatee, Florida
 Southwest Florida
 St. Petersburg, Florida
 Stuart Area, Florida
 Texarkana, Arkansas-Texas

Region Three

Bloomfield Hills, Michigan
 Cleveland East, Ohio
 Lafayette, Indiana
 Omaha, Nebraska

Region Four

Abilene, Texas
 Bartlesville, Oklahoma
 Bay Area, Texas
 Conroe-The Woodlands, Texas
 Corpus Christi, Texas
 Duncan, Oklahoma
 El Paso, Texas
 Hutchinson, Kansas
 Midland, Texas

Region Five

Anchorage, Alaska
 Bozeman, Montana
 Calgary, Alberta
 Cascade, Oregon
 Cheyenne, Wyoming
 Colorado Rocky Mountain

Corvallis, Oregon
 Eugene, Oregon
 Jefferson County, Colorado
 Laramie, Wyoming
 Las Vegas, Nevada
 Olympia, Washington
 Reno, Nevada
 Spokane, Washington
 Tacoma, Washington
 Vancouver, British Columbia
 Wenatchee, Washington
 Yakima, Washington

Region Six

Bakersfield, California
 Honolulu, Hawaii
 Marin County, California
 Sacramento, California
 Ventura County, California

Pi Beta Phi Spirit Awards

Anchorage, Alaska
 Catalina Mountain, Arizona
 Conway, Arkansas
 Des Moines, Iowa
 Indian River County, Florida
 Manchester Area, Connecticut
 Palm Springs-Desert Cities, California
 San Antonio, Texas
 San Juan, Colorado
 Springfield, Missouri
 Tidewater of Virginia
 Quincy Area, Illinois

Excellence in Chapter Support

Large Club: Phoenix, Arizona
Small Club: Nation's Capital-D.C.

Excellence in Communication

Overall Winner
 Indianapolis, Indiana
Region One
 Nation's Capital-D.C.

Philadelphia-Main Line, Pennsylvania
 Richmond, Virginia

Region Two

Alpharetta, Georgia
 Atlanta, Georgia
 Birmingham, Alabama
 Brevard County, Florida
 Columbia, South Carolina
 Louisville, Kentucky
 Lowcountry, South Carolina
 Nashville, Tennessee

Region Three

Arlington Heights, Illinois
 Bloomfield Hills, Michigan
 Chicago-Windy City, Illinois
 Glen Ellyn-Wheaton, Illinois
 Indianapolis, Indiana

Region Four

Bartlesville, Oklahoma
 Dallas, Texas
 Houston, Texas
 Kansas City, Missouri-Shawnee
 Mission, Kansas
 Katy-West Houston, Texas
 Oklahoma City, Oklahoma
 Richardson-Plano, Texas
 Southlake Area, Texas
 St. Louis, Missouri

Region Five

Aurora, Colorado
 Bellevue-Eastside, Washington
 Colorado Springs, Colorado
 Denver, Colorado
 Lake Oswego-Dunthorpe, Oregon
 Portland, Oregon
 San Juan, Colorado

Region Six

Albuquerque, New Mexico
 Palm Springs-Desert Cities, California
 Phoenix, Arizona
 San Diego, California

South Bay, California
 South Orange County, California

Excellence in Community Service

Large Club: Nashville, Tennessee
Small Club: Arlington Heights, Illinois

Excellence in Literacy Initiatives

Large Club: Indianapolis, Indiana
Small Club: Oklahoma City, Oklahoma

Excellence in Membership

Overall Winner: Tulsa, Oklahoma
Under 50: Duncan, Oklahoma
51-100: Hutchinson, Kansas
101-150: Lawrence, Kansas
151-250: Tyler, Texas
251-600: Colorado Springs, Colorado
600+: Houston, Texas

Excellence in Programming

Large Club: Phoenix, Arizona
Small Club: Nation's Capital-D.C.

Reunions & Anniversaries

CALIFORNIA

The California Delta pledge class of 1951 celebrated its 60th anniversary reunion in Ojai, California. The women played games, sang Pi Phi songs and toured a local art museum, which displays the work of their pledge sister KAREN KERNS LEWIS. The group also held a special ceremony in remembrance of their departed Pi Phi sisters.



KANSAS

The Kansas Beta pledge class of 1974 gathered in San Diego, California, this past July for their biennial reunion. The women reminisced about their college days and sang Pi Phi songs while also taking time to shop, see the sights of San Diego and enjoy the cool weather. The next reunion is planned for the summer of 2013 in Naples, Florida.



INDIANA

Several Indiana Gammas gathered for a “30 Something” reunion at the Butler University Chapter house in July 2011. The women are pledge class members from 1979–1983.



OREGON

On a recent trip to Italy, sponsored by Willamette University, four Oregon Gammas met during the opening night festivities. The women are members of the pledge classes of 1964, 1970 and 1973. The trip was a wonderful way to develop new friendships with Pi Phi sisters. From left, JUDY LANG, SARA BELL SCHROEDER, JULIE BRANFORD and ALLYN SHELLENBERGER IRVING. The women are pictured in Cortona, Italy.



The Oregon Alpha pledge class of 1961 held its 50th anniversary reunion in May. BARBI RAY HUTCHISON hosted the event at her home on the Oregon coast. The day was a wonderful way to share stories about the University of Oregon and to reaffirm the friendships made as collegiate members of Pi Beta Phi.



TENNESSEE

In July, three generations of the Kendall Family attended their family reunion in Gatlinburg, Tennessee. The Pi Phi sisters visited Arrowmont and are pictured in front of the paper gown exhibit. From left, Ohio Etas MEREDITH ZINSSER CONTI and KATHERINE KENDALL, Wisconsin Beta MARY KENDALL GINN and Alabama Beta KENDRA GINN. The matriarch of the family, 93-year-old Mary, was joined by her granddaughter Kendra, her niece Katherine and her great-niece Meredith.



Upcoming Events

MICHIGAN ALPHA

The Michigan Alpha Chapter at Hillsdale College will host its 125th anniversary celebration April 21, 2012. For event details, visit www.michiganalpha125.com. Be sure to sign up for email updates while you are there. Anyone interested in helping to plan this event or learning more should email info@michiganalpha125.com.

MISSISSIPPI BETA

The Mississippi Beta Chapter at the University of Mississippi will celebrate its 50th anniversary April 13–15, 2012. Please mark your calendars and plan to attend this special event. Email questions to Mississippi Beta SUSAN MCDAVITT at smcdavitt@hotmail.com or search Facebook for "Mississippi Beta 50th Anniversary Reunion – April 13–15, 2012" and request to "Join" the group.

2011–2012 Directory

Past Grand Presidents

Carolyn Helman Lichtenberg, Ohio Alpha
Jo Ann Minor Roderick, Oklahoma Beta
Beth van Maanen Beatty, Texas Gamma
Sarah Ruth Mullis, South Carolina Alpha
Emily Russell Tarr, Texas Beta

Officers Emeriti

Grand President Emerita –
 Jean Wirths Scott, Pennsylvania Beta
Grand Treasurer Emerita –
 Orpha O'Rourke Coenen, Indiana Delta

Grand Council

Grand President –
 Mary Loy Tatum, Oklahoma Beta
Grand Vice President Collegians –
 Cara Ballard Sutcliffe, Illinois Beta-Delta
Grand Vice President Alumnae –
 Cindy Rice Svec, Kansas Beta
Grand Vice President Communications –
 Diane Bielman, California Eta
Grand Vice President Finance –
 Rae Wohlhueter Maier, Kentucky Beta
Grand Vice President Membership –
 Paula Pace Shepherd, Texas Epsilon
Grand Vice President Programming –
 Julie Carney, Texas Beta

Directors

Director Membership – Tina Rivard,
 Pennsylvania Theta
Director Extension – Ana Mancebo Miller,
 Texas Beta
Director Finance/Housing – Ann Warmack
 Brookshire, Texas Beta
Director Philanthropy – Ann Crigger Shaw,
 Arkansas Alpha
Director Communications (Pilot) –
 Rebecca Brannen Lasse, Florida Epsilon
Director Chapter Operations (Pilot) –
 Melissa Malone Colvin, Virginia Theta
Director Risk Management – Alexis Janda,
 Nebraska Gamma

Appointed Officers

Fraternity Archivist and Historian –
 Frances DeSimone Becque, New York Alpha
Leadership Development Officer – Lisa Masters,
 Georgia Alpha
National Panhellenic Conference Delegate –
 Linda Noel Ibsen, Colorado Beta
NPC First Alternate – Ana Mancebo Miller,
 Texas Beta
NPC Second Alternate – Ashley Dye, Illinois Zeta
NPC Third Alternate – Oriana Bertucci,
 Ontario Gamma

Parliamentarian – Janice Shrader Falk,
 Nebraska Beta

Alumnae Directors/Specialists

Alumnae Region One

Director – Lisa Doll Tovar, Connecticut Alpha
Membership Specialist – TBD
Programming Specialist – Rachel Torres,
 California Eta

Alumnae Region Two

Director – Sande Schweier Ullmann,
 Oregon Gamma
Membership Specialist – Marilyn Smith Rowell,
 Alabama Alpha
Programming Specialist – Amy Dailey,
 Virginia Zeta

Alumnae Region Three

Director – Suzanne Gill Kriz, Illinois Eta
Membership Specialist –
 Elizabeth Van Buren Kiss, Iowa Gamma

Programming Specialist – Monica Diaz-Greco,
 Ontario Alpha

Alumnae Region Four

Director – Marla Neelly Wulf, Kansas Beta
Membership Specialist – Teri Kirk Rolph,
 Ohio Eta
Programming Specialist –
 Audrey Miller Pennings, Arkansas Alpha

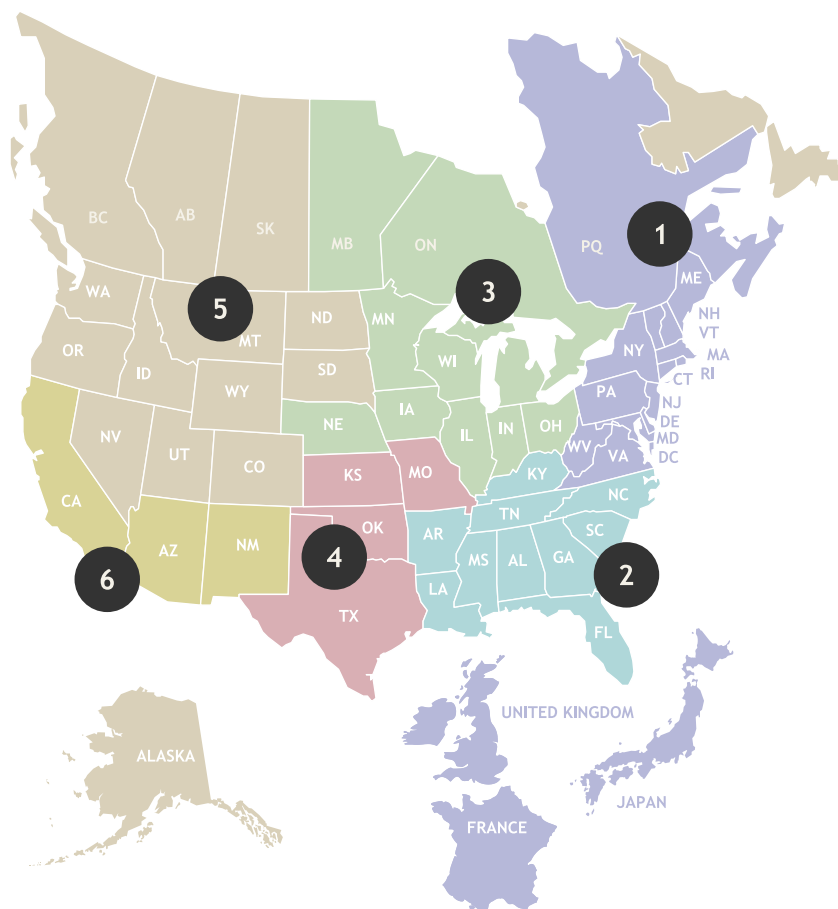
Alumnae Region Five

Director – Lisa Rede Roman, New Mexico Beta
Membership Specialist – Chanel LaChappa,
 California Iota
Programming Specialist – Hillary Moore,
 Colorado Gamma

Alumnae Region Six

Director – Patty Davisson Brown, Kansas Beta
Membership Specialist –
 Tracy Beaufort Whitehead, California Delta
Programming Specialist – Veronica Zukowski,
 California Iota

Alumnae Regions



Collegiate Directors/Specialists

Collegiate Region One

Director – Alison Veit Heafitz, Illinois Zeta
Chapter Operations/Advisor Specialist – Elizabeth Grazioli, Pennsylvania Gamma
Financial/Housing Specialist – Donna Butterworth, Virginia Eta
Membership Specialist – Amy Lorenzen Southerland, South Dakota Alpha
Programming Specialist – Missy Hatteyer Korduner, Connecticut Alpha
Risk Management/Policy Specialist – Katie Walter Devlin, Colorado Delta
Coordinating Specialist – Colleen Briley, Pennsylvania Epsilon

Collegiate Region Two

Director – Leisa Ebeling Lowrey, Ohio Eta
Chapter Operations/Advisor Specialist – Nadia Husbands Smid, Ontario Alpha
Financial/Housing Specialist – Lynda Breyer Miller, Michigan Alpha
Membership Specialist – Jen Bailey, Michigan Epsilon
Programming Specialist – Pamela Kaufmann Adair, Ohio Alpha
Risk Management/Policy Specialist – Cathy Hosier Palmer, Indiana Zeta

Coordinating Specialist – Jessica Donda Ledbetter, Michigan Alpha

Collegiate Region Three

Director – Jill Mackey Carrel, Indiana Gamma
Chapter Operations/Advisor Specialist – Kristi Hanlon Marsh, Illinois Zeta
Financial/Housing Specialist – Kathryn Palacio, Illinois Beta-Delta
Membership Specialist – Patricia Berryhill, Illinois Iota
Programming Specialist – Kimberly Sisk Crowe, Kentucky Beta
Risk Management/Policy Specialist – Jessica French Steed, Ontario Alpha

Collegiate Region Four

Director – Kathy Wager Ewing, Alabama Gamma
Chapter Operations/Advisor Specialist – Peggy Malone, Georgia Alpha
Financial/Housing Specialist – Kathryn Bart Autry, Georgia Alpha
Membership Specialist – Greer Horne, Virginia Zeta
Programming Specialist – Mary Beth Rhyne Dykes, Alabama Gamma
Risk Management/Policy Specialist – Melissa Kish, Indiana Zeta

Coordinating Specialist – Chantel Hagner, Florida Epsilon

Collegiate Region Five

Director – Amy Strickland Dreller, Arizona Beta
Chapter Operations/Advisor Specialist – Nancy Mossman McConnell, Nebraska Beta
Financial/Housing Specialist – Alisa Brooks Rudlang, Minnesota Alpha
Membership Specialist – Colleen Bolin Hochberg, Kansas Beta
Programming Specialist – Anne Jones Wildeboor, Kansas Beta
Risk Management/Policy Specialist – Kate Blatherwick Pickert, Kansas Alpha

Collegiate Region Six

Director – Emory McGinnis Eison, Mississippi Beta
Chapter Operations/Advisor Specialist – Elizabeth Gipson Henry, Texas Delta
Financial/Housing Specialist – Lisa Pithan Sabatino, Oklahoma Alpha
Membership Specialist – Brenda Foster Huffman, Texas Epsilon
Programming Specialist – Susan McDavitt, Mississippi Beta
Risk Management/Policy Specialist – Stephanie Coomes Zuniga, Indiana Zeta

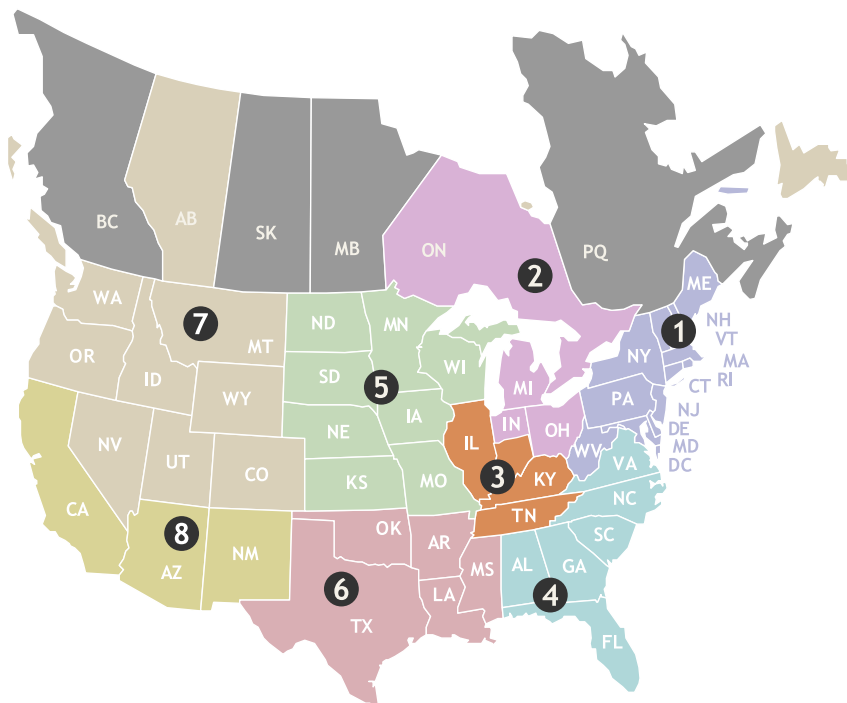
Collegiate Region Seven

Director – Schabahn Straughan Day, Oregon Beta
Chapter Operations/Advisor Specialist – Jamie Feist Daniels, Montana Alpha
Financial/Housing Specialist – Suzette Thompson Farrar, Colorado Delta
Membership Specialist – Britton Trabert, Iowa Gamma
Programming Specialist – Marie Metke Westom, Oregon Gamma
Risk Management/Policy Specialist – Lauren Carrier, California Nu

Collegiate Region Eight

Director – Karen Emberton, Kentucky Beta
Chapter Operations/Advisor Specialist – Kathleen Caldwell Kleinman, Arizona Alpha
Financial/Housing Specialist – Sharon Abeyta-Levey, New Mexico Beta
Membership Specialist – Daphney Bitanga, California Eta
Programming Specialist – Michele Looman Benedict, Arizona Gamma
Risk Management/Policy Specialist – Tara Abbott Davis, Arizona Alpha

Collegiate Regions



Fraternity Committees

Canadian Philanthropies Chairman – Marilyn Clark, Ontario Beta
Carolyn Helman Lichtenberg Crest Award Chairman – Cindy Rice Svec, Kansas Beta
Local Convention Committee Chairman – Jerelyn Wright Biehl, California Delta
Holt House Committee Chairman – Cheri Raber Patterson, Illinois Theta
Legislative Committee Chairman – Kristin Noer Olson, Indiana Delta
Music Committee Chairman – Jane Bony Heiserman, California Delta
Leadership and Nominating Committee Chairman – Katie Schwie Perrine, Tennessee Delta

Pi Beta Phi Headquarters

1154 Town & Country Commons Drive
Town & Country, Missouri 63017
Phone: (636) 256-0680
FAX: (636) 256-8095
email: Headquarters@pibetaphi.org
website: www.pibetaphi.org
Executive Director – Juli Holmes Willeman, Iowa Beta
Assistant Executive Director – Katey Newell Hobbs, Missouri Alpha
Fraternity Controller – Susan Mertz
Human Resources Director, Headquarters – Margo Wilton Lesser, California Gamma
Marketing & Communications Director, Headquarters – Eily Cummings
The Arrow Editor – Constance Dillon, California Delta
Member Services and Programming Director – Shawn Eagleburger
Creative Director – Tim Steele
Internal Legal Counsel – Michelle Murrell Willbanks, California Eta
Pi Phi Express – (800) 322-1867

Consultants

Leadership Development Consultants – Lauren Eliopoulos, Florida Alpha; Ashley Hallowell, Illinois Eta; Vivian Long, New York Eta; Kasey Mitchell, Mississippi Alpha; and Polly Niccoli, Texas Delta
Resident Leadership Development Consultants – Katie Bosworth, Kentucky Beta; Emily Jones, Virginia Delta; and Alex Roark, New Mexico Alpha

Holt House

402 E. First Avenue
Monmouth, Illinois 61462
Phone: (309) 734-3988
Curator – Denise Turnbull, Illinois Alpha
Hours – Wednesday and Friday, 9 a.m.–5 p.m.
Other times by appointment only.

Fraternity Insurance Representatives

Property and Liability Insurance
MJ Insurance, Inc., Sorority Division
P.O. Box 50435, Indianapolis, Indiana 46250
Phone: (888) 442-7470
website: www.mjinsurance.com/sorority

Interim Medical Insurance

Garity Associates Brokerage Insurance Agency, Inc.
P.O. Box 8, Accord, Massachusetts 02018
Phone: (800) 234-9488

Pi Beta Phi Fraternity Housing Corporation

FHC Board of Directors

President – Lyn Arnot Clark, Texas Alpha
Vice President – Eileen O'Neil Grigutis, Kentucky Beta
Secretary – Kathy Wasiele Bach, Connecticut Alpha
Treasurer – Lisa Gamel Scott, Colorado Alpha
Board Member – Rae Wohlhueter Maier, Kentucky Beta
FHC Advisory Committee – Leah Cero Fitzgerald, Kansas Beta

Fraternity Housing Corporation Office

1154 Town & Country Commons Drive
Town & Country, Missouri 63017
Phone: (636) 256-0680
FAX: (636) 256-8095
email: fhc@pibetaphi.org
Executive Director – Rebecca Culver Randolph, Oklahoma Alpha

Pi Beta Phi Foundation

Board of Trustees

Foundation President Emerita – Ann Dudgeon Phy, Texas Alpha
President – Kathy Swinea Nevill, Tennessee Gamma
Vice President – Jan Kincaid Clifford, Indiana Delta
Treasurer – Karen Consalus Price, Missouri Alpha
Secretary – Karen Sulley Thorn, Nebraska Beta
Trustees – Peggy Wilson Lawrence, Tennessee Gamma and Mary Rakow Tanner, Maryland Beta
Ex-Officio Members – Mary Loy Tatum, Oklahoma Beta and Lyn Arnot Clark, Texas Alpha

Pi Beta Phi Foundation Office

1154 Town & Country Commons Drive
Town & Country, Missouri 63017
Phone: (636) 256-1357
FAX: (636) 256-8124
email: fndn@pibetaphi.org
Executive Director – Teri Chadwick, CFRE

Foundation Ambassadors Council

Alumnae Regions

Alumnae Region One – Betsy Beese Sheridan, Texas Gamma
Alumnae Region Two – Holly Jordan Battle, Florida Delta
Alumnae Region Three – Laurie Hoskins, Iowa Alpha
Alumnae Region Four – Leigh Mossman Pauling, Texas Delta
Alumnae Region Five – Ruth Walsh McIntyre, South Carolina Alpha
Alumnae Region Six (FAAR Chairman) – Kim O'Brien, Ohio Zeta

Collegiate Regions

Collegiate Region One (FACR Chairman) – Mary Alice Classen Tinari, North Carolina Beta
Collegiate Region Two – Betsy Harris Cantlie, New York Gamma
Collegiate Region Three – Emily Nicholson Richmeier, Tennessee Delta
Collegiate Region Four – Hannah Muehlbauer, Indiana Gamma
Collegiate Region Five – Julie Wightman Taylor, Texas Beta
Collegiate Region Six – Victoria Miller Kasper, Texas Eta
Collegiate Region Seven – Sherrie Pendley Liebsack, Idaho Alpha
Collegiate Region Eight – Kathi Hobbs Chulick, Missouri Alpha

Foundation Committees

Alumnae Continuing Education Scholarship Committee Chairman – Oriana Bertucci, Ontario Gamma
Emma Harper Turner Fund Committee Chairman – Mari Lou Psihogios Diamond, Oregon Alpha
Graduate Fellowship Committee Chairman – Sarah Leffen, Texas Delta
Undergraduate Scholarship Committee Chairman – Rachel Cohen Stephens, Missouri Alpha

Arrowmont® School of Arts and Crafts

P.O. Box 567, 556 Parkway
Gatlinburg, Tennessee 37738
Phone: (865) 436-5860
FAX: (865) 430-4072
website: www.arrowmont.org
Director – Bill May



FALL CRISP COOL HOLIDAYS

A	X158	NEON HOODIE FUN! FUN! FUN! Says it all with this hoodie! Satin-stitching. <i>Unisex fit, cotton/poly blend.</i>	\$40	F	X415	OILCLOTH COSMETIC BAG This fun cosmetic bag features a coordinating wine zebra lining. 12x5.5".	\$21.50
B	X253	NEON FLANNEL PANTS Cute and comfortable. Drawstring has screened Greek letters. <i>Unisex fit, cotton.</i>	\$36	G	X802	OILCLOTH JOTTER This fun jotter is perfect for the girl on the go! <i>Legal size.</i>	\$25
C	X203	CREST CARDIGAN Embroidered crest on an American Apparel® cardigan. <i>Unisex fit, cotton.</i>	\$30	H	X710	CRYSTAL CREST ORNAMENT This beautiful ornament is etched with the Fraternity's crest.	\$25
D	X201	BOYFRIEND CARDIGAN Felt appliquéd letters with a screened crest on an American Apparel cardigan. <i>Unisex fit, cotton.</i>	\$45	I	X708	CHRISTOPHER RADKO® GREEK LETTERS ORNAMENT Custom-designed, handmade in Poland, great for collectors. <i>Glass, 5" long.</i>	\$48
E	X451	OILCLOTH TOTE Oversize tote features a coordinating blue dot lining with interior pockets. 16x20x7".	\$36	J	X709	CLOISONNE BALL ORNAMENT Created with the ancient, labor intensive cloisonne process. Gift boxed. <i>Hand painted, 24k gold plated.</i>	\$38

To view our complete line, visit www.pibetaphi.org/store.

Pi Phi Express



"Like" us on Facebook!



K	MD138	LARGE CREST PENDANT Approximately 1". Sterling silver.	\$40	S	MD311	GARNET AND AQUAMARINE BADGE Diamond Point. 10k gold.	\$275
L	MD165	ANGEL PENDANT Approximately 1". Sterling silver.	\$30	T	MD126	EMMA RING Named for the founder EMMA BROWNLEE KILGORE. Sterling silver.	\$100
M	MD175	CREST DISK PENDANT Approximately 5/8". Sterling silver.	\$42	U	MD125	STACK RING Three rings in one. Wear them together or separately. Whole sizes only. Stainless steel.	\$70
N	MD187	FESTOON NECKLACE 20" chain. Sterling silver.	\$32	V	MD158	OFFICIAL CREST RING Garnet accent. Sterling silver.	\$125
O	MD188	OVAL DISK NECKLACE 18" chain. Sterling silver.	\$40	W	PMD225	CARNATION NECKLACE Cubic zirconias and sterling silver.	\$40
P	MD201	CROWN PEARL BADGE 10k gold.	\$200	X	PMD198	CARNATION RING Cubic zirconias and sterling silver.	\$40
Q	MD910	CREST GUARD 10k gold.	\$50	Y	PMD199	CARNATION EARRINGS Cubic zirconias and sterling silver.	\$35
R	MD218	AQUAMARINE AND PEARL BADGE 10k gold.	\$225				

In Memoriam

Because of space constraints, *The Arrow*[®] will only print the entirety of an obituary for a past Grand President. If you know a sister who has died, please inform Pi Beta Phi Headquarters. Names will only be listed in *The Arrow* if accompanied by a published notice, including those names entered electronically via eReports, Pi Phi's online reporting system. Published notices include a newspaper or newspaper website obituary, a funeral program/prayer card or a listing in a college/university alumni newsletter. Email Alison Bauer at alison@pibetaphi.org or mail to Headquarters.

In Memoriam lists the name, initiation year, and month and year of each member who has died.

Arizona Alpha

Marty Ellen Nowels
1946; February 2011

Arkansas Alpha

Mary Molloy Schlecht
1937; May 2011

California Delta

Charlyn Johnston Dean
1957; June 2011
Melissa Janet Del Aguila
2010; June 2011
Marianne Johnson Eichholtz
1943; March 2011
Barbara Mitchell Kroener
1941; June 2011

Colorado Alpha

Joyce Littell Hamilton
1935; May 2011
Betty Howard Van Bergen
1931; April 2011

Colorado Beta

Alberta Iliff Shattuck
1930; June 2011

Colorado Gamma

Teresa Marie Heyer
1990, affiliated Colorado Alpha;
March 2011

Connecticut Alpha

Veronica Clapp Irvine
1943; June 2011

Florida Alpha

Barbara White Sheehe
1940; April 2011

Georgia Alpha

Jane Johnson Walker
1939; January 2011

Idaho Alpha

Billie Kunter Pierce
1941; July 2011

Illinois Epsilon

Alene Wilkening Peter
1947; June 2011

Illinois Theta

Nancy McCool
1951; August 2010
Patricia Stewart Reynolds
1947; February 2011

Indiana Alpha

Gladys J. Lewis
1942; June 2011

Indiana Beta

Audra Snyder Bailey
1929; May 2011
Charlotte Kupferer Ford
1943; May 2011
Ruth Prickett Houghton
1938; May 2011
Roberta Swan McAdams
1942; July 2011

Indiana Delta

Jane Grimmer Baker
1942; July 2011
Virginia Heckart Henriksen Gage
1943; July 2011
Beeba Holden Karpick
1945; July 2011

Iowa Alpha

Dorothy Shaw Caris
1945; June 2011
DaLoris Nihart Reynolds
1941; March 2011

Iowa Beta

Mary Evans Vanderford
1926; June 2011

Iowa Gamma

Nancy Voggenthaler Brown
1949; April 2011

Iowa Zeta

Kathryn Jasmann Thomas
1934; March 2011

Kansas Alpha

Marjorie Darby Alford
1946; March 2011
Nancy Newlin Ashton
1934; May 2011
Emily Stewart Mowry
1949; June 2011

Kansas Beta

Mildred Houseworth Crawford
1943; June 2011
Carol Stevenson Eddleman
1940; June 2011
Jamie Michelle Barkes Pursley
1995; March 2011
Lynn Moxley Shepard
1957; May 2011

Kentucky Alpha

Dolores Blair Dahlem
1950; March 2011

Louisiana Alpha

Caroline Coates Spiller
1937; June 2011

Maryland Alpha

Helen Grant Barker
1934; June 2011

Michigan Alpha

Shirlee Nash Zopf
1947; April 2011

Michigan Beta

Patricia Earhart
1954; March 2011
Ruth Mayer Strack
1943; April 2011

Minnesota Alpha

Myreen Gavle Wedge
1962; April 2011

Missouri Alpha

Clara Groves Anderson
1935; January 2011

Missouri Beta

Jane Morris Whisnand
1940; April 2011

Nebraska Beta

Ann Andreasen Kratt
1953; April 2011

New York Alpha

Susan Mitchell Crowell
1941; May 2011

New York Gamma

Lois Jaeger Helmus
1947; April 2011

North Carolina Alpha

Mary Goodrich Baskin
1945; July 2011
Anne Llewellyn Towe
1957; June 2011

North Carolina Beta

Ruth Reade Kelley
1948; March 2011

Ohio Alpha

Olive Bradford Brubaker
1952; May 2011
Patricia Duggan Kleindienst
1952; April 2011
Jane Maccombs Wood
1943; May 2011

Ohio Delta

Millicent Wille Johnston
1960; March 2011
Sherry Davis Wheale
1966; March 2011

Ohio Epsilon

Mildred Gogel Wynn
1945; March 2011

Ohio Zeta

Retta Smith Schumacher
1954, affiliated Pennsylvania
Epsilon; June 2011

Oklahoma Alpha

Justine McDonald Gillick
1948; July 2011
LaVon Witham Neal
1951; June 2011
Elizabeth Fell Oven
1947; February 2011

Ontario Alpha

Zoe Christie Fleming
1940; May 2011
Mary Burton Stuart
1946; May 2011

Oregon Alpha

Dorisee Riley Hoffpauer
1943; November 2010
Jane Carlisle Moshofsky
1948; June 2011
Phyllis Atwater Volkstorf
1937; May 2011

Oregon Beta

Shirley Attridge Cole
1946; May 2011

South Dakota Alpha

Mary Heles Puffer Salo
1941; May 2011

Tennessee Alpha

Willodene Nichols McCall Millard
1943; June 2011

Tennessee Beta

Charlene Foster Hutcherson
1943; July 2011

Tennessee Delta

Rosa Graham Grisham
1962; May 2011

Texas Alpha

Barbara Jones Bell
1948; April 2011
Rollin Guess Bevill
1961; July 2011
Nancy Duncan Rice
1956; July 2011
Barbara Esgen Stieren
1951; April 2011

Texas Gamma

Sarah Catherine Cross
1988; April 2011

Texas Zeta

Jane Brazelton Dudgeon
1977; June 2011

Virginia Gamma

Betsy Swaine Thune
1953; July 2011

Washington Alpha

Barbara Butler Baschen
1941; May 2011
Margaretta Smith Boucher
1940; April 2011
Anne Macleish Foss
1936; May 2011
Bette Jo Lockwood MacLellan
1955; May 2011
Lenore Noonan Ryan
1940; July 2011

Audrey Hinkle Seefeldt
1936; May 2011

Wyoming Alpha

Maryan Forbes Hurtt
1951; May 2011

Don't be Left Out of the Fraternity Directory

This fall, Pi Beta Phi is working with Publishing Concepts (PCI) to create our official Fraternity Directory. PCI is a company that creates and publishes alumni directories for educational institutions. The Pi Beta Phi Directory, published every five years, is for member-to-member use and helps Headquarters maintain its database.

PCI will contact all Pi Phi members, both collegians and alumnae, to gather information for the directory. Members will be contacted first through email and postcards, then through follow-up phone calls, if necessary.

Once the directory is complete, members can purchase a printed or electronic copy. The directory can help you search for sisters or help an alumnae organization contact members. Thank you for your participation and for supporting this important Fraternity initiative.

Foundation Scholarship Applications Online

Attention collegians and alumnae! Pi Beta Phi Foundation undergraduate, graduate fellowship and Alumnae Continuing Education (ACE) scholarship applications for the 2012–2013 academic year will soon be available. To view a listing of available Foundation scholarships, including those designated for specific chapters, visit www.pibetaphifoundation.org/scholarship-program. Remember to visit the site again in November for a link to the online applications.

Children with Special Needs

The Arrow wants to know if you are a parent or caregiver of a child with special needs or a professional who works with children with special needs. What are the challenges you have faced while teaching and raising these children? What rewarding experiences have you had with these children?

The Arrow wants to hear how your Pi Phi sisters have been a part of your special needs child's life. Please email your story and high-resolution photos to *The Arrow* Editor CONSTANCE DILLON, California Delta, at editor@pibetaphi.org.

Barbara Bush Sends Signed Book to Holt House

Former First Lady BARBARA BUSH, Texas Eta, sent a signed copy of her book, "A Memoir: Barbara Bush," to the Holt House library in Monmouth, Illinois. Her inscription reads, "To: Holt House library with Pi Phi love — Barbara Bush." Mrs. Bush also sent three signed bookplates to be placed in her other written works.

The Holt House library contains books written by Pi Beta Phi authors. Over the next year, the library will undergo renovations and redecorating, thanks to contributions made to Pi Beta Phi Foundation's Holt House Special Library Project.

You told us. We Listened.



Pi Beta Phi has launched a website redesign project, which will affect both the members-only side and the public side of the website.

We heard you visit the site for forms and manuals. You love to search for your Pi Phi sisters! And, you want a faster site with streamlined navigation.

Pi Beta Phi will be conducting further research to ensure we create an easy-to-use website. To share additional feedback now, contact Marketing and Communications Director Eily Cummings at eily@pibetaphi.org.

For the rest of 2011, you can still sign in to the members-only side of the website with your Pi Phi login to:

- Search for Sisters
- Update Personal Information
- Access the Resource Library
- Pay Annual Alumna Dues

www.pibetaphi.org/esisters

The Arrow Reader's Guide

The Arrow® of Pi Beta Phi is the official quarterly publication of Pi Beta Phi Fraternity. The purpose of *The Arrow* is to present matters of value to Pi Beta Phi; furnish a means of communication among collegiate chapters, alumnae organizations and officers; and represent the worthiest interest of Fraternity women.

CONTACT THE ARROW:

The Arrow of Pi Beta Phi Fraternity
1154 Town & Country Commons Drive
Town & Country, Missouri 63017
TheArrow@pibetaphi.org
Phone: (636) 256-0680 Fax: (636) 256-8095

HOW TO RECEIVE THE ARROW

Collegians receive quarterly issues of *The Arrow* each year with payment of collegiate dues through their chapter. Individual copies are mailed to each undergraduate member's permanent address, and each Pi Beta Phi chapter receives six copies.

The Fall *Arrow* is mailed to all alumnae. Dues paying alumnae are mailed the winter, spring and summer issues. *The Arrow* is posted online, and non-dues paying alumnae who have a good email address listed with Headquarters (HQ) receive an email notification. Messages are also posted on the Fraternity's official Facebook® page and Twitter® when the magazine is available online.

To receive four hard copy issues of *The Arrow*, pay your \$25 annual Fraternity alumna dues to your local alumnae organization or directly to HQ by mailing a check to Pi Beta Phi Fraternity, Alumna Dues, 1154 Town & Country Commons Drive, Town & Country, Missouri 63017. You can also click on the Pay Dues button on the home page of www.pibetaphi.org.

HOW TO MAKE AN ADDRESS CHANGE OR NAME UPDATE

Visit the profile section of eSisters, or email your name and/or address changes to headquarters@pibetaphi.org. You may also call Pi Beta Phi HQ at (636) 256-0680 or mail a written notice to Pi Beta Phi Headquarters.

LETTERS TO THE EDITOR

Email your letter to the Editor at editor@pibetaphi.org. Please include your full name and chapter of initiation. *The Arrow* reserves the right to publish any letter received. Letters may be edited for space and clarity.

HOW TO GET PUBLISHED

All Pi Phis are encouraged to submit news and stories to *The Arrow*. All submissions are subject to editing for content, grammar and space constraints. When submitting a story, be sure to include a member's preferred chapter, first, maiden and last names. As a general rule, *The Arrow* does not print stories about weddings, engagements, pinnings or birth announcements. Visit *The Arrow* webpage for more information and to download Pi Beta Phi's Photography Guidelines. We cannot guarantee the publication of any submission. We receive so many and space is limited.

ARROW SUBMISSION DEADLINES

Winter Issue: November 1 Summer Issue: May 1
Spring Issue: February 1 Fall Issue: August 1

Meet the new Arrow Editor

California Delta CONSTANCE DILLON is Pi Beta Phi's new Editor of *The Arrow*. Constance earned her bachelor of arts in English from the University of California, Los Angeles.

While at UCLA, she wrote for The Daily Bruin. A San Diego native, Constance joins Headquarters after working for The KTLA Morning Show in Los Angeles and writing for her hometown newspaper.



News from Arrowmont School of Arts and Crafts

Recently, Arrowmont® School of Arts and Crafts and Pi Beta Phi have been working closely to develop a new relationship honoring our shared history and supporting an independent future for the School. An email discussing some exciting changes was sent to the membership at the beginning of September. In case you missed it, a summary has been provided below:

A new era began earlier this year when Arrowmont's Board of Governors voted to change its legal name from Pi Beta Phi Settlement School doing business as Arrowmont School of Arts and Crafts to simply, Arrowmont School of Arts and Crafts. A previous decision by the Board to change the School's bylaws included a transition of Pi Beta Phi's ex-officio members off the Arrowmont Board of Governors and the addition of several newly elected community members. While several Pi Phi members presently serve as Arrowmont board members, the Arrowmont bylaws now no longer require the board to have Fraternity representation. Each of these actions aligns with recommendations made by the Fraternity's Gatlinburg Study Committee.

These changes confirm Arrowmont's independence while preserving the historical association that enriches both our organizations. We encourage Pi Phis who support Arrowmont to visit www.arrowmont.org/pi-beta-phi to stay informed and involved in the future of the school, or to make a contribution directly to Arrowmont or to Pi Beta Phi Foundation's Arrowmont Fund.



Pi Beta Phi Fraternity
1154 Town & Country Commons Drive
Town & Country, MO 63017

CHANGE SERVICE REQUESTED

NONPROFIT
ORGANIZATION
U.S.
POSTAGE PAID
HANOVER, NH 03755
PERMIT NO. 104

GET YOUR COPY OF *The Arrow* ALL YEAR LONG



Pay your \$25 annual Fraternity alumna dues to receive your hard copies of the magazine.
Contact your local alumnae organization or visit www.pibetaphi.org.