

The OF PI BETA PHI *Arrow*



Headquarters 10 Years Later

Page 4

ALSO INSIDE:
State of the Fraternity

Page 13



Friends & Leaders for Life

PI BETA PHI FRATERNITY

ΠΒΦ

Founded 1867

FOUNDERS

Emma Brownlee Kilgore

Margaret Campbell

Libbie Brook Gaddis

Ada Bruen Grier

Clara Brownlee Hutchinson

Fannie Whitenack Libbey

Rosa Moore

Jennie Nicol, M.D.

Inez Smith Soule

Fannie Thomson

Jennie Horne Turnbull

Nancy Black Wallace

MISSION STATEMENT

The mission of Pi Beta Phi Fraternity for Women is to promote friendship, develop women of intellect and integrity, cultivate leadership potential and enrich lives through community service.

VISION STATEMENT

Pi Beta Phi Fraternity is committed to being recognized as a premier organization for women by providing lifelong enrichment to its members and contributing to the betterment of society.

CORE VALUES

Integrity

Honor and Respect

Lifelong Commitment

Personal and Intellectual Growth

Philanthropic Service to Others

Sincere Friendship

The **Arrow** OF PI BETA PHI



Features

- 4 Headquarters 10 Years Later
- 12 Help Celebrate Pi Beta Phi's 100 Years of Literacy Service
- 13 State of the Fraternity
- 27 Celebrate with Sisters from Ocean to Ocean at the 2013 Convention
- 34 All Aboard ... Next Stop Alumnae Leadership Summits

Follow us online:



Facebook®
www.facebook.com/pibetaphi



Pinterest®
www.pinterest.com/pibetaphi



LinkedIn®
www.linkedin.com



Twitter®
www.twitter.com/pibetaphihq



Pi Beta Phi Blog
www.piphiblog.org



YouTube®
www.youtube.com/pibetaphihq

The Arrow of Pi Beta Phi is published by Pi Beta Phi Fraternity, 1154 Town & Country Commons Drive, Town & Country, Missouri 63017. POSTMASTER: Send address changes to The Arrow of Pi Beta Phi, 1154 Town & Country Commons Drive, Town & Country, Missouri 63017.



View
The Arrow[®]
 online at
www.pibetaphi.org

ARROW EDITOR

Constance Dillon
 editor@pibetaphi.org

**MARKETING & COMMUNICATIONS
 DIRECTOR, HEADQUARTERS**

Eily Cummings

CREATIVE DIRECTOR

Tim Steele

EDITORIAL STAFF

Jennifer Whittom Schmidt
 Janelle Schroeder

GRAND COUNCIL

Mary Loy Tatum
 Grand President

Cara Ballard Sutcliffe
 Grand Vice President Collegians

Cindy Rice Svec
 Grand Vice President Alumnae

Diane Bielman
 Grand Vice President Communications

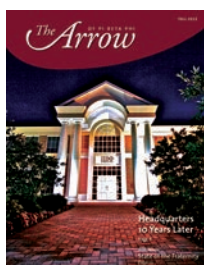
Rae Wohlhueter Maier
 Grand Vice President Finance

Paula Pace Shepherd
 Grand Vice President Membership

Julie Carney
 Grand Vice President Programming

Departments

- 2 Perspective
- 3 From our Readers
- 10 Literacy
- 16 Remember
- 17 Volunteers
- 18 Campus Living
- 20 Collegiate News
- 24 Collegiate Awards
- 28 Foundation
- 32 In Her Words
- 33 Pi Phi Pens
- 36 Alumnae News
- 39 Alumnae Awards
- 42 Reunions & Anniversaries
- 43 2012–2013 Directory
- 46 In Memoriam
- 50 Pi Phi Express[®]
- 52 News & Notes



ON THE COVER: The beautiful brick and white-columned Pi Beta Phi Headquarters building turns 10 years old this fall. But Headquarters is much more than a building — it's the people inside who strive to create a valuable member experience for each and every Pi Phi. Learn more about Headquarters beginning on Page 4.



Member Fraternity Communications Association

Working for Pi Phi is Never ‘Just a Job’

The day we dedicated our beautiful new Headquarters building was a “memory day.” We had a great crowd of current and past officers and staff, friends and family. To say we were “Pi Phi Proud” is putting it mildly. The ribbon-cutting scissors were truly almost as tall as I am (though admittedly, I am not very tall). I have always felt most fortunate to have served as Grand President during this historic event because, as is true of most — if not all — of our Pi Phi successes, great things are only accomplished through our combined efforts and the commitment of many dedicated members.



SARAH RUTH “SIS” MULLIS
Past Grand President
South Carolina Alpha
University of South Carolina

In the case of our Headquarters building, the project started under the leadership of past Grand President BETH VAN MAANEN BEATTY, Texas Gamma, and with the financial acumen of past Grand Vice President Finance LOU ANN MONTGOMERY CARTER, Oklahoma Alpha. Lou Ann then went the extra mile by chairing our very dedicated Headquarters Task Force. I remember with gratitude how our National Panhellenic Conference friends opened their Headquarters buildings and assisted us by sharing what they had learned in building and operating their Headquarters.

The last decade has certainly brought many changes and much growth to our Fraternity. Where do I think we have had the most change? Once again, I go back to our beautiful Headquarters building. For inside the walls our staff has grown to parallel our needs and to make it possible for Pi Beta Phi to continue our success.

Perhaps I am more appreciative than most. Without Iowa Zeta RENEE ROSS MERCER, who served as Executive Director when I was Grand President, and her dedicated staff, I truly could not have said “yes” to such a huge volunteer position while I worked simultaneously as full-time Director of Pharmacy at a 500-bed hospital. I realized how fortunate we were then, and I feel just as strongly now. Pi Beta Phi has been blessed over the years with outstanding Executive Directors, and I can assure you the leadership of current Executive Director JULI HOLMES WILLEMAN, Iowa Beta, is second to none.

Our Headquarters staff members have taken more and more of the workload off of our volunteers. Although I do not know our present staff as well as I did when I served on Grand Council, I have had firsthand experiences with many of them and worked from a distance with many others. I am pleased to say we have Headquarters leaders and employees who give their all to their jobs and do not consider being on our staff “just a job.” Although they are not all Pi Phis, you will not find individuals more dedicated to achieving Pi Beta Phi’s mission, vision and goals.

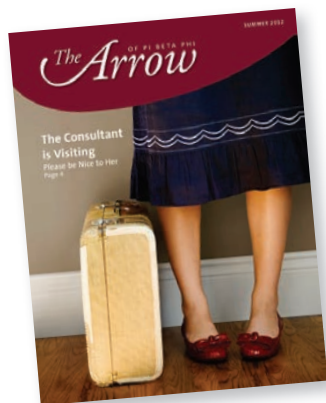
I encourage you to visit our Headquarters building and meet our staff. I am certain you will feel the pride I do in both!

Yours in Pi Phi,

A handwritten signature in cursive that reads "Sis Mullis".

Sis Mullis

From our Readers



The Consultant is Visiting, Please be Nice to Her

While I always enjoy reading *The Arrow*, the summer issue was particularly engaging! Maybe it's just because I miss working with the Fraternity as I recently wrapped up my volunteer role, but the magazine sure made me want to accelerate my volunteer hiatus. I

especially loved the consultant article. It was fun to see the faces and names of the wonderful women I worked with as an officer who make such a tremendous impact on our chapters. I also liked seeing the photo of the consultant who visited my chapter while I was serving as Chapter President.

SCHABAHN STRAUGHAN DAY

Oregon Beta — Mill Creek, Washington

During my years at Central Office, I always looked forward to visits from the talented and enthusiastic consultants who came for interviews, to stock up on supplies or to visit nearby chapters. It's good to know this outstanding Pi Phi program is as strong as ever.

VIRGINIA "GINNY" BLAND FRY

Past Executive Director

Tennessee Beta — St. Louis

It's a Family Affair

I read the article about legacies and want to say, if your daughter does not receive a bid, it does not mean it's over. My daughter, Oklahoma Alpha HILARIE HEFTON BLANEY, went through recruitment at the University of Oklahoma as a third-generation Pi Phi legacy. She was unable to attend all recruitment parties because she was an intern at the U.S. Capitol in Washington, D.C., and we were both devastated when she was released from Pi Phi. Years later, Hilarie became an alumna initiate and recently won the Carolyn Helman Lichtenbeg Crest Award for community service.

ANNE TURNER

Oklahoma Alpha — Oklahoma City

Lifelong Commitment

I graduated from the University of Illinois this spring, and in being recognized for the University Honors/Bronze Tablet, or the top three percent of my graduating class, I was allowed to ask someone who influenced my education to participate in the commencement ceremony with me. I knew right away who I was going to ask: Professor NANCY NORBERG MACGREGOR, Indiana Epsilon.

I chose Nancy because she challenged me to be the person I am today through her constant support and advice. She is one of those professors who you want to write down every single thing she says because it seems she has the answer to everything. She is a mentor and someone whom I truly admire. Little did I know the surprise I was going to receive on graduation day.

When checking my email that night, I found a congratulatory letter signed, "Pi Phi Love, Nancy." I instantly had the chills. How fitting the professor who had the greatest impact on my college education is a Pi Phi. Through our correspondence I found out Nancy, an Indiana Epsilon from DePauw University, knew I was a Pi Phi since the first day of class when I wore my letters. She refrained from mentioning our connection because of professional reasons, but I cannot think of a better time she could have told me.

Graduation day was the first time I realized Pi Beta Phi truly is all about lifelong commitment and my Pi Phi sisters — current and future — will forever have an impact on my life in ways I least expect it. I can only hope some day I will be the inspiration in someone's life as Nancy has been for me.

JULIA JAMES

Illinois Zeta — Geneva, Illinois



We look forward to hearing from you. Email comments to the Editor at editor@pibetaphi.org or mail them to Pi Beta Phi Headquarters, 1154 Town & Country Commons Drive, Town & Country, Missouri 63017.

HEADQUARTERS



10 YEARS LATER

The beautiful brick and white-columned Pi Beta Phi Headquarters building turns 10 years old this fall. But Headquarters is much more than a building — it's the people inside who strive every day to create a valuable member experience for each and every Pi Phi.

WHY ST. LOUIS?

The very first administrative employees for Pi Beta Phi worked in the homes of Grand Presidents. As the Fraternity grew, rented offices were used in Decatur and Marshall, Illinois. In 1964, based on a recommendation from the consulting firm Booz Allen Hamilton, Pi Beta Phi established its Central Office, now called Headquarters, in St. Louis. As it happened, Missouri Beta ALICE WEBER JOHNSON, Grand President from 1958 to 1967, also lived in St. Louis at that time.

A GRAND OPENING

By the late 1990s, Pi Beta Phi staff had grown to more than 20, and the Fraternity was renting nearly an entire floor of office space. Through strategic planning, Grand Council determined owning a building was a sound financial investment, and so a plan to build began.

A three-acre lot was purchased in Town & Country, Missouri, a western suburb of St. Louis in 2000, and construction was completed in less than one year. Because of existing assets, Pi Beta Phi was able to construct the Headquarters building without undertaking a capital campaign. Additionally, chapters, alumnae organizations and individual alumnae gave generous donations to help landscape “Founders Grove,” the trees planted around the building, and create a front walkway of inscribed bricks.

A dedication and grand opening of the Pi Beta Phi Headquarters building was held on November 3, 2002. More than 150 Pi Phis and friends, including the mayor of Town & Country, celebrated with a ribbon-cutting ceremony, building tours and a reception.

Construction of our Headquarters building would not have been possible without the passion and hard work of the Headquarters Task Force, which included past Fraternity Executive Director RENEE ROSS MERCER, Iowa Zeta. The Fraternity is grateful for their vision and service to Pi Beta Phi.

“Headquarters has a special place in my heart,” Renee says. “The building process — from the Grand Council vote to move forward, to site selection, to ‘showing it off’ with pride — is one of the most important highlights of my Pi Phi career.”



VISITORS WELCOME!

If you are in the area and would like to tour Headquarters, please feel free to stop by. A staff member would be happy to give you a tour. Don't forget to shop for some Pi Phi goodies at Pi Phi Express.



HEADQUARTERS TODAY

Over the last 10 years, Pi Beta Phi has seen significant growth in the number of women joining the Fraternity and an increase in opportunities to support these women — both during their college years and throughout their alumnae life.

In order to meet the needs of our growing membership, Pi Beta Phi Headquarters has grown, too. Today, Pi Beta Phi employs 39 professional staff members across three entities: the Fraternity, the Fraternity Housing Corporation and Pi Beta Phi Foundation. These men and women spend every day working to create a valuable member experience for Pi Phis of all ages.

Headquarters staff works hand-in-hand with Pi Phi volunteers to achieve the mission of the Fraternity. Grand Council provides leadership and direction, while staff and volunteers collaborate to complete projects, from producing *The Arrow* to creating programming for alumnae and collegians to convention and other event planning. The strong partnership between staff and volunteers ensures the Fraternity is able to support every Pi Phi woman, in every stage of her life.

Fraternity leadership has worked on creating a volunteer and staff model that will be sustainable well into the future. In recent years, one reason the Headquarters staff has increased is because the volunteer landscape has changed. Pi Phis today hold full-time jobs, have families and volunteer their time with numerous organizations. It is unfair to assume a volunteer will be able to devote 40 hours a week to Pi Phi. To ensure our members continue to receive the same services and outstanding support they have always received from the Fraternity, many projects, programs and promotional initiatives are now handled in-house at Headquarters.

For example, Headquarters staff oversaw the redesign of the Pi Beta Phi website this past spring. The staff conducted hours of research before beginning the design and navigation of the website, from writing and editing page content to reviewing more than 500 manuals and guides housed in the Resource Library.

“As the Fraternity evolves, Headquarters has become a true partner in developing our organization,” says Leadership Development Officer LISA MASTERS, Georgia Alpha. “Today, the Headquarters staff acts not only as a service provider, but as an agent of growth. They keep an eye to the future while also consciously honoring our past, and I am pleased the Fraternity is in such good hands.”

In another 10 years, Pi Beta Phi will have grown in ways we can't even imagine today. The needs of our members will also grow and change. One constant will be the Headquarters staff, which will always be present to serve and support our members.

“The staff at Headquarters pours their hearts and souls into their daily work, not just to help members today but to ensure the future of Pi Beta Phi,” says Executive Director JULI HOLMES WILLEMANN, Iowa Beta. “Our team, with the amazing support of our Pi Phi volunteers, is the reason many future generations of women will be able to experience the sisterhood of the wine and silver blue.” ↷





What I like best about working at Headquarters is the opportunity to give back to an organization that has given me so much. My co-workers and the volunteers with whom we collaborate have such dedication to the Fraternity; I feel very fortunate to work for an organization whose leaders care so deeply about its members.

*Assistant Executive Director
KATEY NEWELL HOBBS, Missouri Alpha*



I remember getting the phone call offering me a job at Pi Phi Headquarters and how I was shaking with excitement as I instantly said 'yes.' While I never imagined I'd end up working here, I'm thrilled to say I work at an organization that gave me so many unforgettable moments, both in college and after.

*Communications Content Manager
JANELLE SCHROEDER,
California Mu*



I love working at Headquarters because I ‘meet’ a sister every time I answer the phone. A typical day can include talking to a member planning a 30-year pledge class reunion to an alumnae organization planning a literacy service project. Our members have so much energy for our Fraternity, it’s hard not to be excited. I feel lucky to experience such a unique side of Pi Phi.

*Alumnae Services & Programming
Coordinator KRISTEN MASSEY,
Illinois Iota*



HEADQUARTERS STAFF AT A GLANCE

- 29 have Greek affiliations
- 18 are Pi Phis
- 11 hold a master’s degree or equivalent higher education certification
- 4 are men
- 207 combined years of Headquarters experience



Since my initiation into Gamma Phi Beta, I have come to value and respect what the Greek community and its leaders do, day after day, to support our members. It is an honor to be part of the Headquarters team and contribute to Pi Phi’s good work.

The best part of my role is the opportunity to speak with Pi Phis who have benefited from Foundation support. The women I interact with come from different chapters, backgrounds and experiences, but they are all passionate about Pi Phi and its future.

*Pi Beta Phi Foundation Marketing and
Communications Manager Jill Pampel*



When I first came to Pi Phi, I had never been part of an organization so focused toward one common goal. The welfare of the Fraternity — its members, its philanthropy, its respect for its past — is what really drives this group. Pi Phi's commitment to its members made Headquarters a perfect fit for me, since I was looking to work for an organization that was making a difference in society.

Creative Director Tim Steele



My Literacy Story: Running with Purpose

By: DEIRDRE LORENZ, Oregon Alpha

I always say, “I run with purpose.” Recently I traveled to Tanzania, Africa, to volunteer at a local orphanage and also run the Mt. Kilimanjaro Marathon. My trip was a life adventure I will never forget.



After two taxi rides and three long plane flights, I finally made it from New York City to Moshi, a town near the base of Mt. Kilimanjaro in Tanzania.

Upon arriving at Upendo Orphanage, I delivered the suitcase full of school supplies I brought with me and then spent the morning playing with the children. Many children live at the orphanage from birth because their mothers died during childbirth or their mothers are infected with HIV and cannot keep them.

In New York, I volunteer to read with students at public schools through the Screen Actors Guild Foundation’s “Performing Artists for Literacy in Schools” (BookPALS). Knowing the benefits of reading with students and to support Pi Phi’s literacy platform Read. Lead. Achieve.®, I decided to read aloud to the children at the orphanage.

When I pulled “The Very Hungry Caterpillar” by Eric Carle out of my bag, the children started jumping and squealing with excitement. As I began reading the book aloud, showing the pages as we went along, the children were so excited, they couldn’t sit still! They started crawling all over me and jumping on my lap to get closer to the book. They loved the colorful pages and illustrations.

I also used physical animation to describe the items on the pages: the fruits, the leaves, the caterpillar, the sun and, finally, the butterfly, a kipepeo in Swahili. I told the children to imagine they were kipepeos and had them “fly” around the playground with me. They listened and watched. They laughed and pointed. They smiled. We all smiled!

I used the second part of my trip, running the 22nd Annual Mt. Kilimanjaro Marathon, as an opportunity to promote Pi Phi’s commitment to literacy service. In honor of my run, I requested my friends and family donate to The Literacy Fund at Pi Beta Phi Foundation to support Read. Lead. Achieve. literacy initiatives.

The course was incredibly tough, including steep hills, deep ravines and dirt roads. Some of the more experienced runners said it was the toughest course they had ever run. Another American woman, a Marine, finished the race alongside me. We were the only two women from another continent to run the full marathon.

My trip was an amazing experience; however, my journey isn’t close to being over. I continue running with purpose in order to support Read. Lead. Achieve. and the BookPALS program, especially as I train for the New York City Marathon. I’m honored and proud to be able to represent Pi Beta Phi’s mission to “enrich lives through community service,” both in my daily life and in my travels abroad.



Gifts to The Literacy Fund at Pi Beta Phi Foundation support Read. Lead. Achieve. initiatives. To make a gift, visit www.pibetaphifoundation.org and click “Make a Donation.”

What's Inside the Read. Lead. Achieve. Promo Pack?

Pi Beta Phi's literacy platform, Read. Lead. Achieve., encompasses the Fraternity's literacy initiatives and literacy vision for the next 100 years: *Pi Beta Phi leads the way to a more literate society.* In August 2012, Headquarters mailed Read. Lead. Achieve. promotional packs to every chapter and alumnae organization to help them tell Pi Beta Phi's literacy story.

DVD/CD: The DVD/CD includes a brand-new video: "Read. Lead. Achieve. Pi Phi's Literacy Story" and additional tools, such as a trivia game, handouts and logos. A PowerPoint® template is also included to personalize with your chapter or alumnae organization's pictures, videos and literacy service stories.

Book: Use the book as a visual aid to tell Pi Beta Phi's literacy story, learn more about our current literacy initiatives and read about the impact Pi Phi's literacy work has in our communities.



Button: Use these buttons at your literacy service events to showcase Read. Lead. Achieve.

Giving Requirements Card: The card outlines how your chapter or alumnae organization can fulfill its annual donation and service requirements.

Why Literacy Script: Use the script to explain why Pi Beta Phi supports literacy and why literacy is important to society.

Bookplates: Order bookplates, in sets of 100, for \$10 through Pi Phi Express.

Brochure: The brochure is a great tool to share Read. Lead. Achieve. with others during your literacy events and promote Pi Phi's commitment to literacy.

NEED MORE? ORDER MORE! Visit www.pibetaphi.org/store.

- Entire promo pack: \$15
- Buttons: \$5 for 10
- Books: \$2.50 each
- Bookplates: \$10 for 100
- Brochures: \$20 for 20
- DVD/CDs: \$5 each

HELP CELEBRATE PI BETA PHI'S 100 YEARS OF LITERACY SERVICE

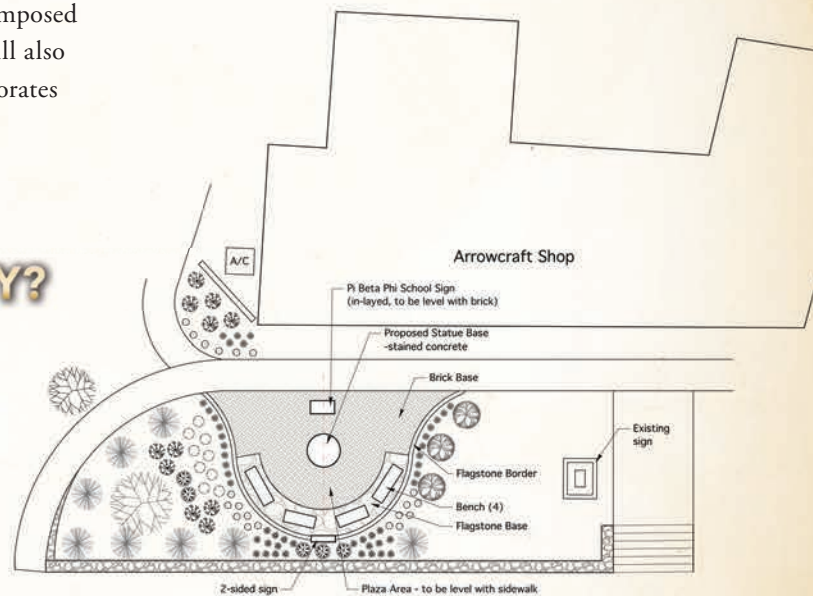
In celebration of the past 100 years of literacy service, Pi Beta Phi will dedicate a Centennial Plaza in Gatlinburg, Tennessee, November 2–3, 2012.



The Centennial Plaza will feature a life-size bronze sculpture, created by Douglas R. Young, of Pi Beta Phi Settlement School's first Pi Phi teacher, DELLA "DELL" GILLETTE MORGAN, Illinois Zeta, instructing a pupil. The design also features a beautiful inlaid plaza, composed of brick and metal plates, and four benches. Landscaping will also surround the plaza. A two-sided historical marker commemorates the incredible legacy of Pi Beta Phi in Gatlinburg.

HOW CAN I SUPPORT PI PHI'S LEGACY OF LITERACY?

- Join us! All Pi Phis and friends are invited to attend the celebration. To RSVP, visit www.pibetaphi.org/events.
- Make a donation to Pi Beta Phi Foundation to support the construction, dedication and maintenance of the Centennial Plaza. All donors will receive recognition for their gift. To make a gift to the Centennial Plaza Project, please visit www.pibetaphifoundation.org/centennial-celebration.
- Purchase a commemorative charm from Pi Phi Express featuring Pi Beta Phi's Legacy of Literacy logo. For each charm purchased, \$5 will be donated to The Literacy Fund at Pi Beta Phi Foundation.
- Follow what's happening during the Centennial Plaza dedication and reception on Twitter using the hashtag #legacyofliteracy. Photos and updates will be posted in real time.



Artist renderings of Centennial Plaza

STATE OF THE FRATERNITY

Dear Pi Phis,

Whether a current collegiate member or a Diamond Arrow, every Pi Phi has a unique story to tell. The Fraternity is also telling a story through its strategic plan: Pi Phis are Friends and Leaders for Life.

Success is rarely achieved without a plan. Our strategic plan is a roadmap for sustaining Pi Phi's long-term vitality. It ensures we remain relevant and compelling to current and future generations. The plan must propel the Fraternity toward its vision, while operating according to its mission statement: promoting friendship, developing women of intellect and integrity, cultivating leadership potential and enriching lives through community service.

Beginning in 2001, the current model of Pi Beta Phi's strategic plan began to take shape and has evolved since then. Pi Phi's leadership reviews the three main goals — lifelong loyal members, a sustainable organization model and broad resources to fuel growth — biennially to ensure they are still relevant to the membership. However, the strategies and tactics (the part that brings the plan to life) are reviewed, and sometimes changed, annually.

Over the last year, Pi Beta Phi has celebrated many successes. There have also been bumps along the way. It is important to the Fraternity's leadership we share these accomplishments and challenges with you.

Goal #1: Lifelong Loyal Members

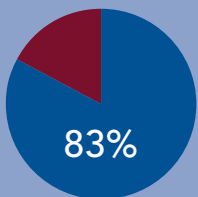
Sisterhood, philanthropic service and Fraternity engagement are at the heart of a Lifelong Loyal Member.

Successes

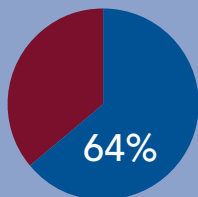
- Pi Beta Phi leads the way to a more literate society through new Read. Lead. Achieve. promotional efforts.

A new Facebook page allows members to share their literacy stories and learn about what other Pi Phis are doing. A promotional pack was also delivered to help chapters and alumnae organizations tell Pi Beta Phi's literacy story. In addition, The Literacy Fund at Pi Beta Phi Foundation was created so the collective financial resources of Pi Phi's fight for literacy are harnessed and targeted at the programs where they can have the most impact.

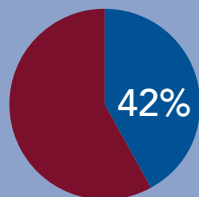
- Pi Phi's 100-year dedication to literacy will be celebrated this November in Gatlinburg, Tennessee, with the unveiling of Pi Beta Phi Centennial Plaza. Pi Beta Phi Foundation is working to make the celebration a success through its fundraising campaign, which will help develop the plaza and ensure its upkeep.
- Alumnae *Leading with Values* launched to give alumnae additional programming around Pi Phi's core values.
- Regional Collegiate Leadership Academies, Alumnae Leadership Summits and a Chapter House Corporation (CHC) Summit were held this year to provide position-specific training, and also cross functional and leadership training.
- Both Pi Beta Phi Fraternity and Foundation launched new and improved websites. The new websites have a softer look, streamlined navigation and more engaging content. The Fraternity also eliminated eSisters to minimize confusion and integrated the Members-Only information into the new www.pibetaphi.org.



Chapters reached quota during formal recruitment



Chapters received Pi Beta Phi Awards



Chapters with a higher GPA than campus average

9,522 Twitter Followers

28,703 Facebook "Likes"

30,645 Visits to the Blog

205,516 Visits to the Website

- Pi Phi welcomed its newest chapter Connecticut Gamma at Quinnipiac University. Pi Phi will colonize this fall at the University of Chicago and Case Western Reserve University.

Challenges

- Pi Beta Phi suspended operations at the Washington Beta Chapter and the Pennsylvania Beta Chapter because of Policy and Position Statement violations.
- Seven chapters were/are on Fraternity Probation because of low recruitment numbers, inappropriate conduct and/or financial difficulties. Probation means the chapter charter is in jeopardy, and they are receiving added support from Fraternity officers and staff.
- Because the Fraternity takes chapters on Fraternity Probation seriously, a comprehensive plan for prevention education and risk management is essential. A volunteer Director Risk Management position was approved last convention, and an Assistant Director of Chapter Development and Support joined the Headquarters staff for added support. Having these added resources will allow Pi Beta Phi to make greater strides in this area.
- This past school year, 23 individual members from 11 different chapters were dismissed for not adhering to policies and failing to live by Fraternity values. While this number may seem small, dismissals are very taxing on the Fraternity because of the time and resources needed to make an informed decision and allow for procedural fairness. Even though these decisions are hard, dismissing members not adhering to policies and failing to live by Pi Phi values is essential to ensure our sisterhood is strong for generations to come.
- Colleges and universities spend billions each year to upgrade campus housing. Many collegians also have off-campus

housing options that offer updated amenities. To meet the expectations of today’s collegians, the Fraternity Housing Corporation, alongside CHCs, must provide housing comparable to on- and off-campus housing, including working to upgrade amenities and manage facility operations and finances at the highest level.

Goal #2: Sustainable Organization Model

Through the creation of coaching and training for Pi Phi volunteers and staff, these individuals can have a greater impact on the lives of members; especially as the volunteer landscape changes and more responsibilities are shifted to staff with the adoption of a governance model.

Successes

- Grand Council became certified in board governance practices. A governance model will allow Grand Council to focus on strategy and less on day-to-day responsibilities.
- Both volunteers and staff attended the same biennial leadership and training events to build mutual trust, discuss the strategic plan and build tighter partnerships.
- New training for Alumnae Advisory Committees (AAC), alumnae organization officers and collegiate officers launched this fall through the new Pi Beta Phi Online Learning Center.
- Promotional tools were developed to recruit potential Pi Phi volunteers. For example, the new website allows members to self-identify for open volunteer positions. Social media and email marketing are other tools Pi Phi has utilized to increase volunteer recruitment efforts.

Challenges

- There is still much work to be done around onboarding our volunteers and staff.

1,650

Alumnae who serve on AAC and CHC

127

International Fraternity Officers

9 

New Member class size ranges from

132 

\$422,860 GRANTS

from Pi Beta Phi Foundation

funded the Leadership Development Consultant program, Holt House and *Leading with Values* programming

- Collegians and alumnae still need more education around Pi Phi's leadership model to help them learn how to adopt the leadership skills and live them in their Pi Phi roles.
- Though we developed volunteer recruitment tools, many chapters are still in need of AAC and CHC volunteers.

Goal #3: Broad Resources to Fuel Growth

As Pi Beta Phi experiences growth, it is essential to find new ways to effectively budget and staff the Fraternity to meet these growing needs and expectations.

Successes

- Technology changes rapidly, and Pi Phi wants to ensure it can successfully adapt to future technology advances. Additional personnel resources were added in the Information Technology area to reach this goal.
- New staff positions were established in the Member Services and Programming Department and in the Accounting Department to ensure Pi Phi has the resources it needs to support members for years to come.
- Pi Beta Phi continues to be diligent in managing Fraternity assets with its recent land of Silverbell, an undeveloped parcel of land in Gatlinburg. This sale did not affect other Fraternity landholdings in the area, including Pi Beta Phi Elementary School and Arrowmont® School of Arts and Crafts.
- Three new Non-regional Director positions are being piloted. These positions, partnered with the new staff positions, ensure the Fraternity has enough volunteers in place to support some of the growing needs, such as AAC support, risk management, communication and branding.
- New communication and branding tools for chapters and alumnae organizations were developed to help protect and

positively promote the Pi Beta Phi brand. Moving forward, members will continue to receive tools and presentations about protecting the Pi Phi brand, and how the first step to do so is to incorporate Pi Phi's core values into our daily lives.

Challenges

- It is important the Fraternity finds ways to help members understand the importance of what it means to be a lifelong loyal member and pin-pointing opportunities for engagement, such as volunteering, paying annual alumna dues and donating to Pi Beta Phi Foundation.
- Because Pi Beta Phi is a member organization, operating expenses must be funded in great part by the collection of member dues and contributions.
- Pi Beta Phi must find a more effective way of forecasting needs and budgeting to meet them. It will help ensure the Fraternity can be flexible and viable into the future.

As we move forward, Pi Beta Phi's focus will remain on our members, for each Pi Phi is critical to the Fraternity's overall success. We intend to be the organization of choice for women who value enduring friendships, want to make the world a better place and aspire to be leaders of intellect and character. Therefore, it is critical we understand the needs of the membership. With the help of our chapters, alumnae organizations, staff and Pi Phi volunteers, the Fraternity is poised for future success. Thank you for all you do to help make Pi Beta Phi a premier organization for women!

Yours in Pi Beta Phi,

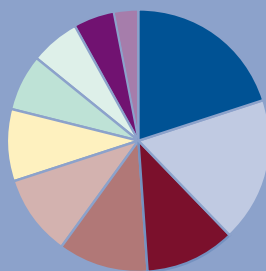


Grand President Mary Loy Tatum, Oklahoma Beta

Revenue and Expenditure charts use unaudited figures for the fiscal year ending June 30, 2012

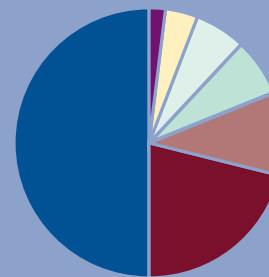
Administrative expenses such as salaries and depreciation have been allocated among other categories to departmentalize the expense.

Fiscal Year Ending June 30, 2012 Expenditures



Chapter Support	20%	\$1.04m
Administrative	18%	\$900k
Marketing & Communication/ The Arrow	11%	\$582k
Alumnae Support	11%	\$571k
Housing Support	10%	\$484k
Pi Phi Express Merchandise	9%	\$459k
National Officers	7%	\$357k
Convention/Educational Events	6%	\$304k
Membership	5%	\$244k
Other	3%	\$156k

Fiscal Year Ending June 30, 2012 Revenue



Dues and Fees	50%	\$3.74m
Silverbell Sale	21%	\$1.52m
Miscellaneous	10%	\$757k
Pi Phi Express Revenue	7%	\$514k
Foundation Grants	6%	\$423k
Investment Revenue	4%	\$293k
Convention/Educational Event Fees	2%	\$133k

Remember

By: FRAN DESIMONE BECQUE, New York Alpha Fraternity Archivist and Historian

A Pi Phi Suffragette

In this election year, we remember Iowa Gamma CARRIE LANE CHAPMAN CATT, who played a pivotal role in helping women earn the right to vote. A successor to the cause's leader, Susan B. Anthony, Carrie celebrated the passage of the 19th Amendment in 1920 and later founded the League of Women Voters.

Carrie's time as a student at Iowa State University was an important part of her life. Though she worked while in college, Carrie valued her Pi Phi membership and was very involved in what is now known as the Iowa Gamma Chapter. In a recording secretary's book in the Pi Beta Phi archives, an entry for a October 11, 1879, meeting reads, "Moved and seconded that a committee of two be appointed to make out a list of the addresses of members and send to each one. Carrie Carter and Carrie Lane appointed."



Photo Courtesy of Wisconsin Historical Society

Iowa Gamma CARRIE LANE CHAPMAN CATT was a lifelong loyal Pi Phi. In this portrait, taken in 1883, Carrie is proudly wearing her arrow badge in the style of the day.

She attended the 1890 Galesburg Convention and spoke about "The New Revolution." She also gave a lecture at Swarthmore College in 1901 entitled, "The Procession of Justice," which was attended by members of the Pennsylvania Alpha Chapter. The collegians reported, "We were all delighted to meet

After graduation, Carrie moved to Mason City, Iowa, where she taught high school and then became a school superintendent. Carrie's ties to Pi Beta Phi remained strong in her alumna life. In a portrait taken in 1883, she is proudly wearing her arrow badge in the style of the day.

Carrie used her Pi Phi connections to promote the women's suffrage movement.

She attended the 1890

this very prominent as well as very charming Pi Phi."

In 1902, a chance meeting between Carrie and Grand President ELIZABETH GAMBLE, Colorado Alpha, helped establish the New York City Alumnae Club, which was chartered later that year. Carrie aided in the club's formation by calling an impromptu gathering to greet the Grand President, and she spoke about the suffrage cause to the women on many occasions.

On May 25, 1902, Elizabeth wrote to a Pi Phi friend about her chance encounter with Carrie. "While in the Chicago (train) station I met Mrs. Catt on her way from Montana — had a long talk. She is going to get the New York City — Pi Beta Phi together for a meeting ... to organize. Have you met Mrs. Catt? I liked her."

Four days later, Carrie wrote to Elizabeth to pass along details about the upcoming meeting in New York City. Carrie's letter, dated May 29, 1902, expressed her enthusiasm to meet with the Pi Phi women:

"We talked with the Manager of the St. Denis (Hotel) over the telephone and secured their consent to hold our meeting in the reception room near the elevator, on the second floor, from 9:30 to 11 a.m. on Saturday. I then sent a letter to the 17 names whose addresses were given on the list. There will not be time for them to send replies to me, and therefore, I did not ask them to do so ... It would be well for you to be there a few moments before half past nine. I shall expect to be there promptly if possible, but as I live a long ways away, I may be delayed ... Hoping to see you Saturday, I am, Yours Fraternally."

It is because of the work of women like Carrie Chapman Catt that women today have the opportunity to vote. Make your voice heard! Remember to vote on November 6, 2012. ↪

Pi Phi Sisterhood is Important in Your Alumna Life

By: HOLLIE JANOVAK WHARTON, Utah Alpha

I grew up watching my sister, Utah Alpha ASHLEE CHRISTOFFERSON, inspire everyone she encountered. When Ashlee joined the Utah Alpha Chapter in college, I was eager to follow in her footsteps, and I became a Pi Phi when I later attended the University of Utah. Though I wasn't very involved as a collegian, I have discovered my passion for our Fraternity as an alumna. I am now thrilled to serve as President of the Salt Lake City Alumnae Club, thanks to Ashlee's support and encouragement.



Utah Alpha HOLLIE JANOVAK WHARTON (right) wasn't very involved in Pi Phi as a collegian, but her sister, Utah Alpha ASHLEE CHRISTOFFERSON (left), inspired her to get involved as an alumna.

My sister has always been an amazing person, but only upon pledging Pi Beta Phi did she fully blossom. Ashlee became passionate about friendship, community service and developing her leadership skills. I pledged the Utah Alpha Chapter in the fall of 1999, hoping I would experience a similar passion for sorority life.

However, because of my place in life, I failed to spend a lot of time at my chapter house or with my Pi Phi sisters while I was in college. After graduation, I was filled with regret about the experience others seemed to have in Pi Phi that I missed. But what I have found as an alumna is unexpected.

While I was focusing on my career as a labor and delivery nurse, my sister Ashlee became very involved with the Salt Lake City Alumnae Club. She started to take on a variety of leadership roles, including club President, President of the Northern Utah Alumnae Panhellenic and member of Utah Alpha's Alumnae Advisory Committee (AAC). All the while, Ashlee was an incredible role model and a comforting sister to me.

Encouraged by Ashlee's service, I began reconnecting with lost Pi Phi friends and participating in our alumnae club's events. In the process, I discovered my own enthusiasm and dedication to Pi Beta Phi. I am now the current President of the Salt Lake City Alumnae Club. In reflection of the

hurdles I experienced during my college years, my main goal as club President is to strengthen the relationship between alumnae club members, the Utah Alpha Chapter House Corporation and the chapter's AAC members, to better support the Utah Alpha collegians.

I am proud to report our support of the Utah Alpha Chapter has surpassed activities done in previous years. Our alumnae club has co-hosted a literacy walk; participated in Susan G. Komen Race for the Cure® with our team "Active Angels"; held a movie night with Utah Alpha seniors; provided dinner during recruitment; participated in initiation; provided moral support after the loss of a Utah Alpha collegiate sister with dinner and treats; filled the chapter room with balloons and letters before meetings; and helped decorate the chapter's Christmas tree.

I feel blessed to be able to serve our Fraternity as an alumna. Pi Phi has taught me values and leadership and completely opened my eyes to the importance of friendship and sisterhood. The combination of my supportive sister, Ashlee, and the amazing friendships I've made through the Salt Lake City Alumnae Club have completely changed my outlook on life. I am honored to be a member of Pi Beta Phi and to call so many wonderful women my sisters.

To become a volunteer, email volunteer@pibetaphi.org or visit www.pibetaphi.org/volunteernow.

Providing for Colorado Alpha's Future

The Colorado Alpha Chapter house at the University of Colorado has served as a home away from home for collegians since 1924. The Chapter House Corporation (CHC) knew if they wanted Pi Phi to continue its strong presence on campus, they must provide a safe, modern and competitive facility. Colorado Alpha's CHC invites you to take a look at the completed renovation phases, as well as plans for future updates.



Through careful study, assessment and planning, it was determined the chapter must respect the elegance and history of the original house, while updating and upgrading essential amenities and services in a sustainable, ecological way.

As a result, in early October of 2012, the Colorado Alpha CHC announced with great joy and enthusiasm, the "Honoring Our Past, Providing for Colorado Alpha's Future" capital campaign. The completed renovations were made possible in part thanks to generous donations from many loyal Colorado Alpha alumnae.

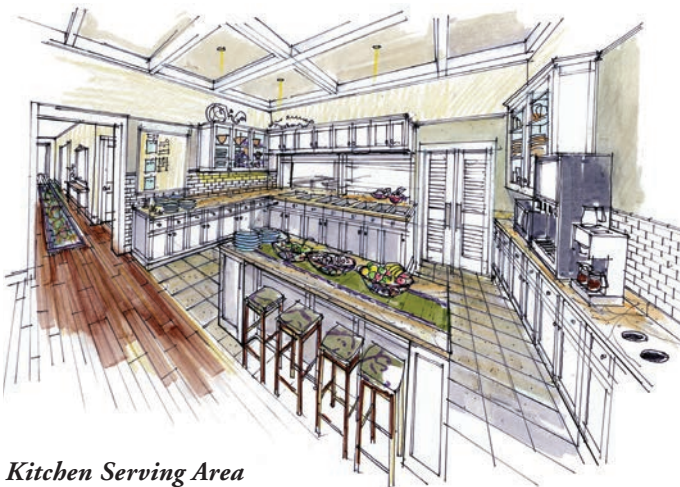




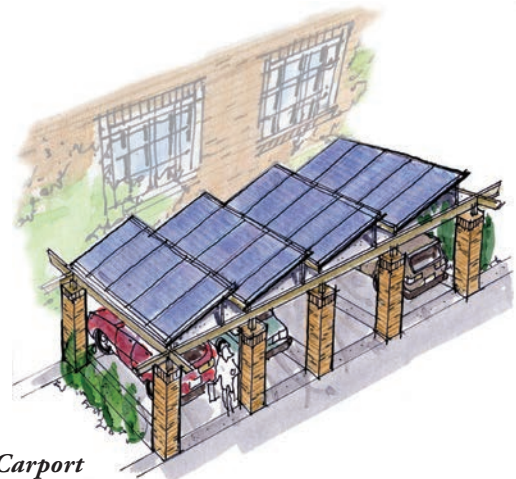
Students and their parents expect more for their housing dollars today. Sorority housing is often compared to newly renovated on-campus residence halls and off-campus apartments with full amenities. Those amenities, coupled with more space and privacy, pull our members away from the chapter house. Pi Phi must offer a safe and attractive facility in order to remain competitive with the university dorms and other sorority houses on campus.



Yoga Room



Kitchen Serving Area



Solar Carport

Collegiate Spotlight

A team of University of Illinois business students — including six Illinois Zeta Pi Phis — won the 2011 Ernst & Young “Your World, Your Vision” case competition, receiving \$10,000 to implement their youth cooking class in the Champaign-Urbana community.

Illinois Zeta KIM NELSON never imagined stopping for a free slice of pizza at an Ernst & Young promotional booth would lead to winning a national business competition. But after hearing about the case competition that day, Kim rushed back to the Illinois Zeta Chapter house to find her fellow business students.

“I was excited,” Kim said. “We go to class together, we have the same teachers and we study for finals together, so I knew it was an easy choice to ask some of the Pi Phis to participate.”

The final team, made up of six Pi Phis and two other women, began meeting at the Illinois Zeta Chapter house to brainstorm project ideas. The Ernst & Young “Your World, Your Vision” case competition asks students to create a service project for their local community incorporating education, environment and entrepreneurship. Each team presents its project to a panel of judges, with regional winning teams advancing to a national competition.

Each participating team is also assigned a “mentor,” an Ernst & Young employee who gives guidance while the teams develop their projects. By chance, Illinois Zeta alumna KATIE ABRAHAM was assigned as the women’s mentor.

“We sat around the Pi Phi living room for hours at a time thinking up ideas,” said Illinois Zeta NISHA SABOO. “It was definitely baby steps. We would think of an idea, test it out and then ask people around campus what they thought.”

The team decided to teach elementary school students about healthy eating, project planning and environmental sustainability by hosting cooking classes in local classrooms. Each lesson introduced students to a recipe that used organic, locally grown ingredients. After making the food, the students created a cookbook with the recipes and learned about entrepreneurship by selling the cookbooks.

“We worked with children from low-income neighborhoods where obesity is high and many children don’t have after-school activities,” Nisha said. “They were so excited to make the food and also eager to work with college students. It was nice to see how responsive they were to our project.”



From left, Illinois Zetas ERIN DUBER, SHANNON WOODS, JEANETTE PANFIL, SARAH ASHIDA, NISHA SABOO and KIM NELSON won the 2011 Ernst & Young “Your World, Your Vision” case competition.

The women learned they won the national competition on a conference call during spring break. Though one team member was in London and others were on vacation in Florida, all of the women heard the news at the same time.

“It all started with Kim saying ‘Hey, wanna do this?’” Nisha said. “I can’t believe we actually won the whole thing.”

As winners of the case competition, the team received \$10,000 to implement their service project. The women recruited other University of Illinois students to volunteer as cooking teachers and started hosting classes at several schools in the Champaign-Urbana area.

This year, a newly elected Executive Board will lead the project. The eight original team members, including Kim and Nisha, will still be involved in the project, but are looking forward to developing new leaders to continue the cooking classes after they graduate this spring.

“This past semester, I was helping a little girl make a snack, and she asked if she could take one to her mom because they don’t have a lot of food at home,” Kim said. “That’s the reason we did this project. It’s to get out of our college bubble and help children in our community.”

INDIANA

For members of Indiana Alpha at Franklin College, the relationship between a big sis and little sis is a special bond. To reveal the pairings, each New Member receives a pair of socks and finds the chapter member wearing the matching pair of socks. After the reveal is over, the women spend the night taking photos.



The Indiana Epsilon Chapter at DePauw University visits a pumpkin patch each fall. The Pi Phis pick out their favorite pumpkins and eat caramel apples, then they return to the chapter house to paint the pumpkins with faces, halos and arrows in wine and silver blue paint. From left, Indiana Epsilons KATE DUSMAN and CLAIRE RHOADES.



INDIANA

Indiana Thetas won second place in the Greek women category and overall best choreography for their "Pi Phi's '80s Ladies" theme at Valparaiso University's annual "Songfest" competition. The Pi Phis enjoyed making costumes, choreographing dances and practicing their skit.



IOWA

From left, Iowa Betas from Simpson College MIRANDA DEAN, JENNA GRAY, LAUREN SCHEMME and JEANI MULLEN take on the Great Wall of China in Beijing during a spring semester abroad.



KANSAS

From left, Kansas Betas from Kansas State University KRISTEN SVEC, CLAIRE WENGER and CAITLYN OATMAN spent their summer working at The Hole in the Wall Gang Camp. The camp serves children with cancer and other serious blood illnesses and their families. The Pi Phis participated in activities like archery, swimming and mini golf with the campers.



NEW YORK

Sincere friendship and lifelong commitment go hand in hand for the New York Eta Chapter at New York University. Chapter members and alumnae come together each year for the Parkinson's Unity Walk in Central Park. The women raise funds for "Team Nashville," in honor of New York Eta alumna ANNA MALONEY's mother, who lives with Parkinson's disease.



NORTH CAROLINA

Each spring, the North Carolina Alpha Chapter at the University of North Carolina hosts a "Barbecue and Baseball" event, which includes a southern barbecue meal at the chapter house, followed by a university baseball game. Win or lose, the Pi Phis always have a great time supporting the Tar Heels and celebrating sisterhood.



OHIO

The Ohio Epsilon Chapter at the University of Toledo celebrates graduation with a special senior dinner. Senior women shared their favorite Pi Phi memories with the chapter and are given farewell gifts including flowers, graduation cords and alumnae sweatshirts. From left, Ohio Epsilons MEGAN MASSI, DANA GALLOWAY, ARATHI PILLAY and ELISA BADDOUR.



OHIO

For the Ohio Kappa Chapter at the University of Cincinnati, sisterhood events are an opportunity to make memories and strengthen friendships. The women have held a day at the spa, “Popcorn Movie Sundays” and recently traveled to the Aronoff Center for the Arts in downtown Cincinnati to see a musical.



OKLAHOMA

Oklahoma Beta KALEY UPTERGROVE (right) spent her spring semester studying abroad in London. Throughout the semester, her Pi Phi sisters from Oklahoma State University shipped care packages with notes and treats. Kaley’s big sis, Oklahoma Beta KIMBERLEY CARTER (left), also traveled to London to see the sights with her Pi Phi sister.



WASHINGTON

Washington Gammas at the University of Puget Sound look forward to spending time with their Pi Phi sisters. Last year, the women traveled to Puyallup, Washington, for a sisterhood event, where they explored a corn maze and enjoyed the cool fall weather.



2011 Collegiate Awards

The Amy Burnham Onken Award honors a senior member of the Fraternity who has best lived Pi Beta Phi's qualities of excellent scholarship and outstanding campus participation and community service during her collegiate career. The award honors past Grand President AMY BURNHAM ONKEN, Illinois Epsilon.



SHIRI YADLIN
Virginia Theta
Washington & Lee University

Shiri demonstrated a sincere commitment to academics and service within the Washington & Lee community. She devoted much of her time to Campus

Kitchens, which takes unused food from campus dining facilities and serves it to those in need. Shiri cooked and delivered food, visited clients and coordinated chapter events working in the organization's garden. Shiri also shared her love of service with first-year students by leading pre-orientation trips through the Volunteer Venture program. The trips introduced students to contributing factors of poverty in cities surrounding the University. She also maintained a 3.87 GPA with a double major in religion and international politics, while completing more than 1,300 hours of community service. Shiri is a valuable role model, and her love for helping others encouraged her Virginia Theta sisters to join in her philanthropic efforts.

The Chapter Service Award honors an individual who has exhibited meritorious service to her chapter through leadership, responsibility, dependability, initiative and contribution to chapter spirit and unity.



ELEANOR KENNEDY
Virginia Theta
Washington & Lee University

Eleanor is a forward-thinking leader who excelled at uniting the Virginia Theta Chapter with Pi Beta Phi alumnae. While serving as Chapter

President, Eleanor facilitated relationships between her Executive Council and the chapter's Alumnae Advisory Committee through bimonthly meetings. She also increased the chapter's outreach to local alumnae through quarterly online newsletters, social media and chapter events like homecoming. Eleanor developed leadership opportunities for all chapter members by establishing brand-new chairmen and committee positions. These roles helped chapter members realize the importance of their individual contributions, increased sisterhood and peaked members' interests in attending Virginia Theta events as well as events in the Washington & Lee fraternity and sorority community. Eleanor is excited about all things Pi Phi, and her love of the Fraternity motivated and inspired her sisters.

The Jean Wirths Scott Leadership Award recognizes a junior or senior who has served on Executive Council in an exemplary manner, and, in the performance of her duties, has implemented changes and improvements in her chapter or local Panhellenic community. The award honors past Grand President JEAN WIRTHS SCOTT, Pennsylvania Beta.



LAUREN KOLNICK
California Kappa
University of California, San Diego

Lauren's hands-on leadership style created unity among Panhellenic women at the University of California, San Diego. While serving as Panhellenic President, Lauren restarted several Greek-run organizations, such as Greeks Against Sexual Assault. These groups provided an outlet for younger members of the Panhellenic community to get involved. Lauren also increased communication between sorority chapters by holding Panhellenic Council meetings more frequently, hosting quarterly roundtable discussions with Presidents from each chapter and holding weekly one-on-one meetings with each member of the Panhellenic Executive Board. At these meetings, women learned from each other's strengths and weaknesses and shared ideas. And, to celebrate outstanding work in the Panhellenic community, Lauren began a Greek Woman of the Week program to recognize individual achievements.

Congratulations to the 2011 Collegiate Award Winners

Balfour Cup

California Mu
Pepperdine University

Balfour Cup 1st Runner Up

Oregon Alpha
University of Oregon

Balfour Cup 2nd Runner Up

California Nu
Loyola Marymount University

Chapters of Excellence — Phi Level

Arkansas Alpha
University of Arkansas

California Mu
Pepperdine University

California Nu
Loyola Marymount University

D.C. Alpha
The George Washington
University

Missouri Alpha
University of Missouri

Oklahoma Beta
Oklahoma State University

Oregon Alpha
University of Oregon

Washington Alpha
University of Washington

Beta Level Recognition

Arizona Gamma
Northern Arizona University

California Gamma
University of Southern California

California Theta
University of California, Davis

Colorado Delta
Colorado School of Mines

Florida Beta
Florida State University

Iowa Gamma
Iowa State University

Kansas Alpha
University of Kansas

Kansas Beta
Kansas State University

Louisiana Alpha
Tulane University-Newcomb
College

Louisiana Beta
Louisiana State University

Michigan Alpha
Hillsdale College

Minnesota Alpha
University of Southern California

Ohio Iota
University of Dayton

Ohio Kappa
University of Cincinnati

Oklahoma Alpha
University of Oklahoma

Tennessee Beta
Vanderbilt University

Texas Beta
Southern Methodist University

Texas Delta
Texas Christian University

Virginia Epsilon
University of Virginia

Virginia Theta
Washington & Lee University

Pi Level Recognition

Alabama Alpha
Birmingham-Southern College

Alabama Beta
University of Alabama

Alberta Alpha
University of Alberta

Arizona Alpha
University of Arizona

Arizona Beta
Arizona State University

California Beta
University of California,
Berkeley

California Epsilon
San Diego State University

California Eta
University of California, Irvine

California Zeta
University of California, Santa
Barbara

Colorado Epsilon
University of Colorado,
Colorado Springs

Colorado Gamma
Colorado State University

Connecticut Alpha
University of Connecticut

Florida Alpha
Stetson University

Florida Delta
University of Florida

Florida Epsilon
University of Central Florida

Georgia Alpha
University of Georgia

Illinois Eta
Millikin University

Illinois Iota
Illinois State University

Indiana Alpha
Franklin College

Indiana Delta
Purdue University

Indiana Zeta
Ball State University

Iowa Beta
Simpson College

Kentucky Alpha
University of Louisville

Kentucky Beta
University of Kentucky

Kentucky Gamma
Eastern Kentucky University

Massachusetts Gamma
Massachusetts Institute of
Technology

Michigan Beta
University of Michigan

Mississippi Beta
University of Mississippi

Mississippi Gamma
Mississippi State University

Missouri Gamma
Drury University

Nebraska Beta
University of Nebraska

Nebraska Gamma
Creighton University

New Mexico Beta
New Mexico State University

New York Epsilon
Rensselaer Polytechnic Institute

New York Eta
New York University

North Carolina Alpha
University of North Carolina

Ohio Alpha
Ohio University

Ohio Epsilon
University of Toledo

Pennsylvania Gamma
Dickinson College

Pennsylvania Theta
Villanova University

Pennsylvania Zeta
Washington & Jefferson College

South Dakota Alpha
University of South Dakota

Texas Epsilon
University of North Texas

Texas Eta
Texas A&M University

Texas Zeta
Baylor University

Virginia Delta
Old Dominion University

Virginia Gamma
College of William & Mary

Washington Gamma
University of Puget Sound

Wisconsin Alpha
University of Wisconsin

Wisconsin Delta
Marquette University

Pi Beta Phi Spirit Awards

California Theta
University of California, Davis

Colorado Delta
Colorado School of Mines

Florida Alpha
Stetson University

Illinois Zeta
University of Illinois

Indiana Alpha
Franklin College

Kansas Beta
Kansas State University

Mississippi Gamma
Mississippi State University

Ohio Kappa
University of Cincinnati

Pennsylvania Zeta
Washington & Jefferson College

West Virginia Alpha
West Virginia University

Excellence in Academic Mentoring Programming

Michigan Alpha
Hillsdale College

Excellence in Alumnae Advisory Committee Service

Arizona Beta
Arizona State University

Illinois Theta
Bradley University

Missouri Alpha
University of Missouri

Ohio Kappa
University of Cincinnati

Oklahoma Alpha
University of Oklahoma

Virginia Theta
Washington & Lee University

Excellence in Appreciation of Fraternity Values

Virginia Theta
Washington & Lee University

Excellence in Chapter House Corporation Service (with residential housing)

Georgia Alpha
University of Georgia

Excellence in Chapter House Corporation Service (with suites/lodges or no housing)

Pennsylvania Gamma
Dickinson College

Excellence in Communications

Virginia Theta
Washington & Lee University

HM: California Eta
University of California, Irvine

Excellence in Community Service/Philanthropy Projects

Arizona Gamma
Northern Arizona University

Excellence in Formal Recruitment

Alabama Alpha
Birmingham-Southern College

Excellence in Fraternity Heritage Programming

Kentucky Gamma
Eastern Kentucky University

Excellence in Legacy Consideration

Arkansas Alpha
University of Arkansas

Excellence in Literacy Activities

D.C. Alpha
The George Washington University

Excellence in New Member Programming

California Kappa
University of California, San Diego

Excellence in Panhellenic Small & Large

Small: New York Eta
New York University

HM: Louisiana Alpha
Tulane University-Newcomb College

Large: Missouri Alpha
University of Missouri

HM: Arkansas Alpha
University of Arkansas

Excellence in Pi Phi for Life/Senior Programming

New York Eta
New York University

Excellence in Recruitment COB

Kentucky Gamma
Eastern Kentucky University

Excellence in Risk Management/Legal Programming

Colorado Gamma
Colorado State University

Most Improved Scholarship Award

Fewer than 100 Members:

Ohio Theta
Bowling Green State University

More than 100 Members:

California Eta
University of California, Irvine

Outstanding Financial Advisor

Tina Fellers
California Eta
University of California, Irvine

Scholarship Award Listings

Top 10

Connecticut Beta
Yale University (3.665)

California Alpha
Stanford University (3.593)

Tennessee Beta
Vanderbilt University (3.530)

Louisiana Alpha
Tulane University-Newcomb College (3.500)

California Mu
Pepperdine University (3.495)

Nebraska Gamma
Creighton University (3.495)

North Carolina Beta
Duke University (3.495)

Virginia Epsilon
University of Virginia (3.480)

Missouri Gamma
Drury University (3.465)

Oklahoma Beta
Oklahoma State University (3.465)

#1 in GPA on Campus

California Mu
Pepperdine University (3.495)

Iowa Beta
Simpson College (3.405)

Missouri Gamma
Drury University (3.465)

Nebraska Gamma
Creighton University (3.495)

Oregon Alpha
University of Oregon (3.257)

Silver Slipper Award — Excellence of a Chapter Vice President of Finance

Amanda Konarske
Michigan Alpha
Hillsdale College

Top 10 Chapters for Pi Beta Phi Foundation Giving

New York Delta
Cornell University
Missouri Alpha
University of Missouri

Arkansas Alpha
University of Arkansas

Florida Delta
University of Florida

California Gamma
University of Southern California

Mississippi Alpha
University of Southern Mississippi

Tennessee Delta
University of Memphis

Louisiana Beta
Louisiana State University

California Theta
University of California, Davis

Colorado Delta
Colorado School of Mines



June 2013 might seem far away, but it will be here before you know it. **Pi Beta Phi's 69th Biennial Convention** will take place in San Diego, California.

Don't miss out on a great opportunity to celebrate sisterhood, be inspired, learn new leadership skills and see Fraternity business firsthand. For more information, please visit www.pibetaphi.org/convention.



PI BETA PHI CONVENTION 2013

Sheraton San Diego Hotel and Marina
June 28–July 1, 2013

Sisterhood Stories

We plan to collect Sisterhood Stories in San Diego. If you have a special memory or story you would like to share, please visit www.pibetaphi.org/convention or email sisterhoodstories@pibetaphi.org.

Tribute Halos

Angelica, the Foundation Angel, will return to the 2013 Convention. Help make Angelica's dress glow by purchasing tribute halos for your sisters at Halo Heaven. Join the monthly donor club while you are there too!

Q & A with the Foundation President

Pi Beta Phi Foundation President KATHY SWINEA NEVILL, Tennessee Gamma, is passionate about Pi Phi. From serving as Chapter President to President of the Foundation Board of Trustees, Kathy's loyalty and love of Pi Phi is evident. Recently, Foundation staff sat down with Kathy to talk about her commitment to Pi Phi and her vision for the future of the Foundation.

What's your Pi Phi story?

I pledged Pi Phi in the fall of 1975 at the University of Tennessee. I was the first woman in my family to attend college. It was all very new to me, and I was lucky to find the perfect match with Pi Phi. There is little I remember from my college experience that isn't connected to Pi Phi. The Fraternity was my leadership training and total support group.

What motivates you to give so much of your time and talents to Pi Phi?

My father passed away when I was 14, leaving my mom with four young children. As the oldest, I was the first to go to college, and both my sister and brother soon followed. It was difficult to keep us all in school at the same time, and I worked two on-campus jobs to make ends meet. I received scholarships from Pi Phi during my junior and senior year. It really made the difference in my ability to be successful in school. Pi Phi gave so much to me. I am honored to serve such a wonderful organization.



Pi Beta Phi Foundation President
KATHY SWINEA NEVILL
Tennessee Gamma

When you came into the role as Board President, where did you hope to take the Foundation?

My goals were three-fold:

1. Increase awareness of the Foundation and its programs among our members;
2. Increase the amount the Foundation spends on scholarships, leadership training and sister support each year;
3. And increase the overall capacity of our Board and staff.

How is the Foundation doing on those three goals?

We still have a lot to do, but we are working hard to make sure every member understands who the Foundation is and what we do. The increase in awareness is evident in the recent growth of monthly donors and Evelyn Peters Kyle Society members. Programming is

expanding too. We were able to award 128 scholarships and fellowships this year for a total of \$310,000. Though that was a big increase for us over the last year, we were only able to award scholarships to one-third of those who applied. There is still work to be done. Lastly, our Board and staff have grown under the leadership of Executive Director Teri Chadwick. We have added a Trustee seat to the Board and established marketing and development positions at the staff level to better serve our donors.

What does it mean to you, knowing the Foundation has hit \$10.8 million in assets in 2012?

It is huge! It shows we have increased our awareness among Pi Phis, come closer to our programming goals and shown we are worthy of member investment.

Where do you envision the Foundation 10 years from now?

We want to double our assets over the next 10 years. This will allow us to expand our programming in ways that will help us achieve our long-term vision for Pi Phi.

What are the keys to success for organizations like Pi Beta Phi Foundation?

I believe the keys to success are accountability, transparency and sincere friendship. Pi Phi members must be guaranteed their investments in the Foundation are well protected and invested appropriately and their love of Pi Phi returned in a way that reflects our sincere love and friendship for each other.

Why do you think it is important for members to support the Foundation?

It is important to invest in those entities that have invested in you. Pi Phi invested in me and helped me become the woman I am today. It is critical I now share my gifts with Pi Phi to ensure the leadership and fellowship continues for other women.

Lastly, are you looking forward to being Angelica at the 2013 Convention in San Diego?

Yes! It is such fun, and I never thought being so goofy at the 2011 Convention could make me such a Pi Phi rock star! I am always surprised when someone recognizes me from my Angelica antics. In college, while I was serving as Chapter President, I came to meetings dressed as a giant pencil to emphasize the importance of academics, so it seems fitting that I get to don the Angelica costume at convention.



Foundation President KATHY SWINEA NEVILL, Tennessee Gamma (left) presented Missouri Alpha MARIA REDEI TENKHOFF (center) with a Top 10 Alumnae Organization Plaque at the 2011 Convention, with the help of Foundation Executive Director Teri Chadwick (right).



Dressed as "Angelica," Foundation President KATHY SWINEA NEVILL, Tennessee Gamma, encouraged attendees at the 2011 Convention to support Pi Beta Phi Foundation.



The Foundation's Year in Review

Special thanks to all of the collegians and alumnae who have helped make fiscal year 2011–2012 a successful one. With your gifts of support, you have helped sisters in need, led the way to a more literate society and developed the next generation of leaders. Your contributions make a difference, and together, we'll continue to strengthen the support for our sisters, our Fraternity and our communities.

- \$1.2 million was invested in programs and services, including more than \$1 million in direct grants to support education, leadership, philanthropy and heritage — that equates to nearly \$9,000 per chapter.
- 128 Pi Phis were awarded scholarships and fellowships for the 2012–2013 academic year. A total of \$310,000 was awarded, the largest amount in Foundation history.
- \$157,895 was invested to support sisters in need through the Emma Harper Turner Fund, double the amount from just two years ago.
- The Literacy Fund was established to support the Fraternity's Read. Lead. Achieve. initiatives. Now, Pi Phi's support of literacy can be targeted at the programs where they can have the most impact.
- More than 200 alumnae joined the new Evelyn Peters Kyle Society for \$1,000+ donors.
- More than 100 members signed up to join the Foundation's new monthly donor club. Monthly donors support their sisters through automatic, recurring gifts.
- The Foundation improved its channels of communication with members through the launch of a new website, the Pi Phi App, Facebook and Twitter pages.

Show Your Sisters You Care.



Honor a Pi Phi sister or loved one with a tribute gift in her name! Tribute gifts to Pi Beta Phi Foundation can be made to:

- Remember someone special
- Celebrate birthdays
- Commemorate a special Silver, Gold or Diamond Arrow Anniversary
- Honor Chapter Executive Council members or graduating seniors
- Thank outgoing alumnae organization officers or welcome new ones

Honorees receive a card from the Foundation announcing the gift. To make a tribute gift today, visit www.pibetaphifoundation.org and click "Make a Donation."

PI BETA PHI
Foundation

Dreaming Big

Colorado Gamma BRITNEY HENDRICKSON pursues a career in medicine with the help of Pi Beta Phi Foundation.

Brittney Hendrickson is the oldest of four children. She has two sisters and one brother, Danny, who will turn 13 this year. When Danny was born, he was diagnosed with Down syndrome. Brittney's family didn't view Danny's diagnosis as an obstacle, but as an opportunity to become a stronger, more loving family.

Even though Brittney now goes to college away from home, she and Danny remain close. "Danny means the world to me," Brittney said. "Whenever I am in a bad mood, he never fails to put a smile on my face."

Danny is also one of the reasons Brittney decided to pursue a career in medicine. "When I was young, I remember my parents struggled to find a doctor to fit Danny's needs," Brittney said. "At the time, I wanted to do something about it, but I couldn't. I think this desire influenced my career goals. I want to be a doctor and serve others in need."

Brittney began her senior year at Colorado State University this fall, where she is majoring in health and exercise science with a concentration in sports medicine. After graduation, Brittney plans to earn her master's degree in biomedical sciences and then apply to medical school to pursue a career



Colorado Gamma BRITNEY HENDRICKSON and her Pi Phi sisters.



Colorado Gamma BRITNEY HENDRICKSON plans to attend medical school, thanks to a scholarship from Pi Beta Phi Foundation and the encouragement of her brother, Danny.

in surgery. Despite being busy with pre-med course work, Brittney loves to spend every spare moment with her Pi Phi sisters.

"They mean everything to me," Brittney said. "My sisters are not only my friends, but they are also my support system. They motivate me to keep going when I feel like giving up. When I graduate next year, I know I will leave confident I have had the best college experience possible. I thank Pi Phi and my sisters for that."

This year, Brittney received an undergraduate scholarship from Pi Beta Phi Foundation for the 2012–2013 academic year. "I have big dreams for my career, but funding my education hasn't been easy," Brittney said. "The scholarship from the Foundation contributes in so many ways to helping me accomplish my goals."

Brittney also has plans to pay it forward. "I know there are other Pi Phis with their own academic and career goals who may be struggling to pay for school," Brittney said. "I don't think money should ever be an obstacle to pursuing your education. One day, I hope to give to the Foundation and set up a scholarship to help other women, like me, reach for their dreams."

To learn more about scholarships and fellowships offered through Pi Beta Phi Foundation, please visit www.pibetaphifoundation.org.



IN HER WORDS



REE SMITH DRUMMOND CALIFORNIA GAMMA

IN A NUTSHELL ... TELL US ABOUT YOU

I'm the mother of four kids, married to a cattle rancher in Northeastern Oklahoma. I started a blog, "The Pioneer Woman," in my pajamas one day, which led to two cookbooks, two children's books and a memoir about my love story with my husband. I currently have a show on the Food Network chronicling our life on the ranch and how food fits into it. It's been lots of fun! Also, I need a nap.

PI PHI TAUGHT ME ...
"To delight in differences."

ADVICE FOR UP-AND-COMING PROFESSIONAL WOMEN

GIVE US A PEEK INSIDE YOUR TYPICAL DAY

There is no typical day on a working cattle ranch, but it looks something like this: Get up before sunrise. Wake up four tired children. Look for missing boots, jeans, spurs, chaps, gloves and hats. Send them out the door. Try to get as much work done as possible. Cook them lunch. Homeschool them. Cook them dinner. Get more work done after they go to bed. Pass out. Repeat the next day.

WHY I LOVE MY JOB

I get to do it without leaving the ranch!

BEST DAY EVER

The day I married my husband. Everything in my life is a result of that day.

FAVORITE QUOTE

"Everytime you smile at someone, it is an action of love, a gift to that person, a beautiful thing."
— Mother Teresa

BEST ADVICE YOU'VE EVER RECEIVED

"It ain't all that tragic."
(Another way of saying, "Don't sweat the small stuff.")

FAVORITE PI PHI MEMORY

The week of initiation. We ate lots of brownies, laughed until we cried and cried until we laughed.

Left Brained Right Brained

Heels Flats

iPhone Blackberry

a.m. coffee a.m. soda

Hours a week 40+ 50+ 60+

GO GET 'EM!
YOU CAN DO THIS.

RACHEL ALLEN

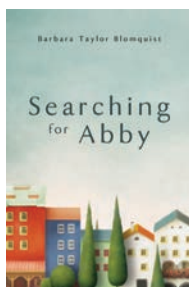
THE HATPIN KILLER

Idaho Alpha RACHEL ALLEN's debut novel, "The Hatpin Killer," is a murder mystery set against the backdrop of post-Hurricane Katrina New Orleans. The story follows Libby, a crime scene investigator running from a painful past, as she becomes entangled in the plot of a serial killer. Libby must draw upon her dormant faith to solve the case and bring the Hatpin Killer to justice.



SEARCHING FOR ABBY

BARBARA TAYLOR BLOMQUIST



"Searching for Abby," by Wisconsin Alpha BARBARA TAYLOR BLOMQUIST, is a novel about one woman's quest for identity. By most accounts, Abby leads a successful life: college degree, husband, three children and the house of her dreams. However, she feels unfulfilled and believes finding her birth family will fill her void. Abby's search carries her through a whirlwind of events and emotions, and she finally discovers who she is, though the answer is not where she was looking.

TRACY FAGAN

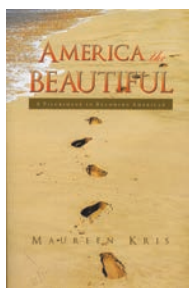
GRATITUDE, GIGGLES & GRACE

Washington Gamma TRACY FAGAN provides a humorous look into finding Mr. Right in "Gratitude, Giggles & Grace." The book describes Tracy's re-entrance into the dating world following two divorces, from first-date anecdotes to dating tips. Along the way, Tracy also shares a touching story of self-discovery and personal growth. She learns the three most important things to bring to a relationship are gratitude, giggles and grace.



AMERICA THE BEAUTIFUL

MAUREEN KRIS HALIKIS



In "America the Beautiful," California Gamma MAUREEN KRIS HALIKIS chronicles the pilgrimage of her family to America, from her grandparents' journey beginning on the small Greek island of Castellorizo to present-day experiences and observations of assimilation. Maureen's memoir touches on the importance of family, faith and values; and echoes the experiences of all immigrants who make the United States their home.

All Aboard ... Next Stop Alumnae Leadership Summits

For three weekends this past spring, alumnae organization officers, Alumnae Advisory Committee (AAC) members and Chapter House Corporation (CHC) members were invited to Pi Beta Phi's Alumnae Leadership Summits held in Atlanta, Los Angeles and Kansas City.



Top: Alumnae stop to take a picture at the Alumnae Leadership Summit in Kansas City.

Bottom: Fraternity Housing Corporation Housing Manager Jen Fetter discusses housing with Chapter House Corporation members.

The goal of the summits was to help attendees charter a course for the upcoming year and beyond, as well as give each member the tools to help her lead her alumnae organization, committee or board.

Pi Phi's longtime friends, The Leadership Institute – Women with Purpose, were on hand during General Sessions to present on the “Art of Balance” and “Footprint Leadership.”

In addition, attendees participated in breakout sessions covering topics ranging from eReports for alumnae organizations and navigating the new Pi Beta Phi website to membership recruitment and literacy event fundraising. AAC members participated in a special “train-the-trainer” track. They also had a sneak peak of the brand-new AAC training resources, which became available on the Pi Beta Phi Online Learning Center this fall.

“Alumnae Leadership Summits provide our alumnae leaders an opportunity to gather with other alumnae leaders and Fraternity officers in a smaller setting,” said Grand Vice President Alumnae CINDY RICE SVEC, Kansas Beta. “The summits allowed for valuable idea sharing, specific job training, education on new Fraternity initiatives and leadership development opportunities.”

Exclusively at the Kansas City Summit, CHC members were invited to attend a summit hosted by Pi Beta Phi's Fraternity Housing Corporation (FHC). There were 25 chapters across the country represented. Presentations were given on topics including fundraising, insurance, property management and renovating chapter residences. CHCs enjoyed time networking with one another, the FHC staff and presenters.


"The CHC Summit has been positive — meeting others, networking and learning from others," said Vermont Beta CHC member BETH NUTTER-GAMACHE, Vermont Beta. "I hope to attend another summit in two years."

In all, nearly 250 alumnae leaders took part in the regional Alumnae Leadership Summits and CHC Summit.

"These summits are well worth the time and money invested by both Pi Beta Phi and alumnae organizations to further the mission of our Fraternity, meet the needs of our leaders and enjoy the fun and friendship membership has to offer," Cindy said.

Pi Beta Phi Foundation Trustees, Foundation Ambassadors and staff were on hand throughout each of the weekends to explain The Literacy Fund and its role in Read. Lead. Achieve., share updates about the Foundation and sell tribute halos. Thanks to the generosity of summit participants, the Foundation raised \$3,735 for Holt House.

In honor of the summits taking place, Pi Beta Phi and First Book® donated more than 500 brand-new books at each location: in Kansas City to Benjamin Banneker Charter Academy of Technology; in Atlanta to Morehouse College Bonner Scholars and the University Center "Let's Read" program; and in Los Angeles to the Elm Street Head Start program.

The Fraternity encouraged each Pi Phi attending to take time to learn something new, meet a sister from another alumnae organization or chapter support team and reflect on her Pi Phi experience. Attendees were challenged to be leaders and encourage more involvement from their chapter, alumnae organization or AAC members. Ultimately, Pi Beta Phi wanted attendees to make the weekend their own, and that they did. It made for an awesome trip! 



Top: Alumnae leaders network during a breakout session at the Alumnae Leadership Summit.

Bottom: From left, Alumnae Region Six Director PATTY DAVISSON BROWN, Kansas Beta; Grand Vice President Alumnae CINDY RICE SVEC, Kansas Beta; Alumnae Region Five Membership Specialist CHANEL LACHAPPA, California Iota; Alumnae Region Four Director MARLA NEELLY WULF, Kansas Beta; and Alumnae Region Five Director LISA REDE ROMAN, New Mexico Beta, presented new books to the Elm Street Head Start Program in Los Angeles.

PI BETA PHI
COAST TO
COAST
CONNECTIONS
2011-2013

Alumnae Spotlight

This summer, Connecticut Beta TAYLOR RITZEL won Olympic Gold at the London Games as part of the United States Women's Eight Rowing Team. Her teammates included California Beta ERIN CAFARO, who also competed in Beijing in 2008.

Since the age of 5, Taylor had been a swimmer. She swam competitively throughout high school and was determined to continue her swimming career in college. Her times were just a bit slow, and discussions with college swimming coaches were not turning out as planned. So during an East Coast college tour, Taylor's mother surprised her by setting up meetings with rowing coaches instead.

"My mom told me her plan when we landed, and I wasn't very happy because I wanted to swim," Taylor said. "We met with several coaches, and the Yale University coach was the most interested. He called me the day after our meeting and told me he wanted to recruit me."

The rest, as they say, is history. Taylor returned home from the trip and started to row, including indoor rowing practice and joining a local rowing club in her Colorado hometown. She became serious with the sport as soon as she arrived at Yale. Taylor and her Yale teammates went on to win three national championships and NCAA titles.

"My team at Yale came together quickly," Taylor said. "It really was a magical four years of rowing for me."

After graduating in 2010, Taylor decided she wanted to "give the national team a try" and began training full time with US Rowing. At first, she competed with the Under 23 National Team, but quickly moved up to the Senior Team.

The Senior Team — which includes eight rowers and one coxswain — trains year-round, spending summers at Princeton University in New Jersey and winters in San Diego, California. The grueling training is interrupted only by competitions and the annual world championships, which have taken Taylor and her teammates to exotic locations like Bolivia and New Zealand.

And then came the London Games. Though Taylor calls earning her spot on the Olympic team "anti-climactic," since the women had been training together the past year, she was thrilled to hear the official announcement this past June.

The Olympic Games are not only a dream come true for Taylor, but also a dream for her mother, who passed away from breast cancer in 2010.



The US Women's Eight Rowing team shows off their gold medals at the London Games. The team included Connecticut Beta TAYLOR RITZEL (fifth from left) and California Beta ERIN CAFARO (first from left).

"My mother was a huge positive influence on my life, and I am so happy I could fulfill her dream for me," Taylor said.

Taylor and her teammates won Olympic Gold in front of a crowd of more than 30,000 at Eton Dorney, the venue for the London rowing competitions. The women beat their biggest competition, the Canadian team, by several yards.

"Winning the Olympics is a huge honor and something I'm very proud of, especially being able to win alongside my teammates," Taylor said. "I have never rowed a race like (the final) before, and I was excited to test my limits. I think we really raced our potential."

Taylor said one of the best parts of her time in London was receiving her gold medal from American rowing legend and past Olympian Anita DeFrantz. As Anita placed the medal around Taylor's neck, she said, "For now and forever more." In that moment, Taylor said she realized becoming an Olympic Champion is something very few people have the chance to do.

"It's something no one can take away from you," Taylor said. "You work so hard and give up so much. To culminate with a gold medal is exciting, but to be able to share it with my teammates is the real beauty of the event."

CALIFORNIA

This spring, the San Jose, California, Alumnae Club held a Champions are Readers® (CAR) program at Blackford Elementary School. Pi Phis tutored students and spent time reading one-on-one with them. At the end of the monthlong program, the fourth-graders received medals of recognition and new books.



FLORIDA

The newly re-chartered Tallahassee, Florida, Alumnae Club hosted its first meeting in May at the Florida Beta Chapter house at Florida State University. The women enjoyed house tours and a catered breakfast, discussed goals for the coming year and installed a new Executive Board. Pictured are the club's charter members.



KANSAS

From left, Kansas Beta SALLY DEFOREST ATTWATER, Texas Gamma MARION MCELROY and Arizona Alpha JOAN DOLD JAEDICKE, members of the Wichita, Kansas, Alumnae Club, affix Pi Phi bookplates to new children's books. The books will be used for a lending library program at the Wichita Children's Home.



Members of the Kansas City, Missouri-Shawnee Mission, Kansas, Alumnae Club celebrated alumna initiate candidate Barbara Butler's "Bid Day" at a local candy shop. From back left, Texas Beta BECKY RAINWATER ANDERSON, Texas Delta AMELIA WENZEL, Kansas Alpha JEAN CHALLINOR HALL, Kansas Beta BARBARA ROE LUHRS, Texas Beta JENNIFER JOHNSON WENZEL and Tennessee Alpha BARBARA BITTNER HAKKIO. Seated from left, Missouri Alpha JEANNE TAYLOR COCKAYNE, Barbara Butler and past Grand Vice President Membership KAY KNITTLE BROCK, Colorado Alpha.



OHIO

In August, members of the Toledo, Ohio, Alumnae Club handed out books at a carnival for Family Outreach Community United Services (FOCUS), which offers housing and job development for homeless children and families. Club members collected the books throughout the year and enjoyed promoting literacy among Toledo families. From left, Ohio Epsilons PEGGY LARMORE LOWDEN, MARTY BRUCE KUPSKY, JENNIFER GRAY and KATHLEEN MILLER GREWE.



VIRGINIA

Three generations of Virginia Gammas gathered at the College of William & Mary to celebrate Charter Day, which commemorates the founding of the college in 1693. From left, Virginia Gammas PATRICIA KING SELL, SAMANTHA PHILLIPS and SHERRI SELL PHILLIPS.



TEXAS

From left, Texas Betas JENNIFER PHILLIPS POTTER, TISH MAULDIN VISINSKY and AMY ANDERSON ZICARELLI, Oklahoma Beta LORI WILSON and Texas Alpha CAROLYN HOOPER LANE attended the annual “Family Night at Six Flags” fundraiser for Children’s Hospital Dallas. The event, co-chaired by Jennifer, Tish and Carolyn, raised more than \$300,000 for the hospital.



WASHINGTON

In June, the Seattle Alumnae Club’s “Fairway Angels” interest group braved the rain to enjoy a game on a local golf course. From left, Pennsylvania Theta TIFFANY PARKER, California Theta KIRSTEN PHILLIPS, Virginia Delta CHRISSEY MONTERO, Washington Beta SARA GOODENOUGH VADSET, Washington Alpha KIM KIMMY TOMCZAK and Montana Alpha GAIL RODENBERG DUGAN.



2011 Alumnae Awards



BETTY STAGGS HUCKABAY
Oklahoma Alpha
University of Oklahoma
Oklahoma City Alumnae Club

The Emma Harper Turner Leadership Award honors a member of the Fraternity whose exceptional leadership contributed to the success of her alumnae organization. The award honors D.C. Alpha EMMA HARPER TURNER who established the alumnae department in 1893.

Betty's leadership and motivational skills led the Oklahoma City Alumnae Club to unprecedented success. While serving as President Elect and then President, the club received the Premier Club Award in 2009 and 2010. Additionally, during her year as President, the club increased its dues-paying members by more than 30 percent. Betty has served as Chairman of the club's annual fundraising event, "A Gathering of Angels," and was the first to establish sponsors to help support the event. She has also served as member of Oklahoma Alpha's Alumnae Advisory Committee (AAC), as member of Oklahoma Alpha's Centennial Celebration board and served two terms as a Province President for the Fraternity.



SONIA PHIPPS BROKAW
Ohio Beta
The Ohio State University
Richmond, Virginia, Alumnae Club

The Evelyn Peters Kyle Angel Award for Club Service is presented to an alumna who has performed duties that often go unrecognized but enhance the success of an alumnae organization. The award honors Illinois Alpha EVELYN PETERS KYLE who gave more than 75 years of service and leadership to the Fraternity.

Sonia always has Pi Phi on her mind and in her heart. She has served as Treasurer for the Richmond Alumnae Club for 17 years and is an integral supporter of the club's longtime philanthropic project, the Elizabeth Kates Foundation. The foundation, named in honor of Pennsylvania Beta ELIZABETH KATES, provides educational materials and books to help inmates at the Virginia Correctional Center for Women (VCCW) earn their GEDs. Sonia has served on the Elizabeth Kates Foundation Board of Directors, started a monthly book club for the VCCW women, helped coordinate the annual plant sale benefitting the foundation and gathered interview clothing and shoes for women who are released. Sonia is also known for helping her Pi Phi sisters in need, whether a death in the family or organizing meals for a sister who is sick.



TISH MAULDIN VISINSKY
Texas Beta
Southern Methodist University
Dallas Alumnae Club

The Young Alumna Achievement Award honors an alumna who graduated college within the last 15 years and has demonstrated a lifelong commitment through her involvement as an alumnae organization member, Alumnae Advisory Committee member or Chapter House Corporation member or other community leadership.

Tish's gift of leadership unites generations of Pi Phis. Upon graduating from Southern Methodist University in 1998, Tish joined the Dallas Alumnae Club and served as the Junior Night Group Treasurer, Fashion Show Liaison, Newsletter Chair and President. She also served in many roles in the alumnae club's Junior Day Group, from Programs Chair to President, in addition to serving on the Texas Beta AAC. Tish worked tirelessly as co-chair of the Local Convention Committee for the 2009 Convention. Beyond her many contributions to Pi Phi, Tish is an enthusiastic volunteer for the Women's Auxiliary to Children's Medical Center, Junior League of Dallas and Young Friends of the Ronald McDonald House®, among others.

Congratulations to the 2011 Alumnae Award Winners



In September, Grand Vice President Alumnae CINDY RICE SVEC, Kansas Beta, attended the Seattle Alumnae Club's kickoff event to present the club with its 2011 awards: the Premier Club Award, the highest honor for a Pi Beta Phi alumnae organization, and the Excellence in Programming Award. Pictured are members of the club's Executive Board with Cindy, wearing their school colors to coincide with the club's 2012–2013 theme, "Good Sports."

Premier Club

Seattle, Washington

Premier Club 1st Runner Up

Oklahoma City, Oklahoma

Premier Club 2nd Runner Up

Houston, Texas

Clubs of Excellence

Region One

Bostonian, Massachusetts
 Manchester Area, Connecticut
 Nation's Capital-D.C.
 Northern New Jersey
 Northern Virginia

Region Two

Brevard County, Florida
 Nashville, Tennessee
 North Carolina Triangle

Region Three

Arlington Heights, Illinois
 Glen Ellyn-Wheaton, Illinois
 Indianapolis, Indiana
 Minneapolis, Minnesota
 Omaha, Nebraska

Region Four

Cypress Creek-Northwest
 Houston, Texas
 Houston, Texas
 Kansas City, Missouri-Shawnee
 Mission, Kansas
 Katy-West Houston, Texas
 Oklahoma City, Oklahoma
 Richardson-Plano, Texas
 Southlake Area, Texas
 Tulsa, Oklahoma

Region Five

Aurora, Colorado
 Colorado Springs, Colorado

Lake Oswego-Dunthorpe,
 Oregon
 Portland, Oregon
 Seattle, Washington

Region Six

Albuquerque, New Mexico
 La Jolla, California
 Long Beach, California
 Palo Alto, California
 Pasadena, California
 Phoenix, Arizona
 San Francisco, California
 San Jose, California
 South Coast, California
 South Orange County,
 California
 Tucson, Arizona

Clubs of Superior Performance

Region One

Chesapeake, Maryland
 Philadelphia-Main Line,
 Pennsylvania
 Richmond, Virginia
 South Fairfield County,
 Connecticut
 Tidewater of Virginia

Region Two

Alpharetta, Georgia
 Birmingham, Alabama
 DeLand, Florida
 Greenville, South Carolina
 Hattiesburg, Mississippi
 Knoxville, Tennessee
 Lowcountry, South Carolina
 Naples, Florida
 Sand Hills, North Carolina
 Southwest Florida
 Stuart Area, Florida

Region Three

Bloomington, Indiana
 Chicago West Suburban, Illinois

Chicago Windy City, Illinois
 Cleveland East, Ohio
 Columbus, Ohio
 Des Moines, Iowa
 Madison, Wisconsin
 Monmouth, Illinois

Region Four

Arlington, Texas
 Austin, Texas
 Columbia, Missouri
 Dallas, Texas
 Fort Worth, Texas
 Lawrence, Kansas
 McKinney, Texas
 San Antonio, Texas
 Springfield, Missouri
 St. Louis, Missouri
 Stillwater, Oklahoma
 Tyler, Texas
 Wichita, Kansas

Region Five

Denver, Colorado
 Highlands Ranch, Colorado
 Jefferson County, Colorado
 Las Vegas, Nevada
 Salt Lake City, Utah

Region Six

Arrowhead-West Phoenix,
 Arizona
 Central Orange County,
 California
 Conejo Valley, California
 Glendale-La Cañada, California
 Los Angeles-Santa Monica,
 California
 Marin County, California
 North San Diego, California
 Palm Springs-Desert Cities,
 California
 San Mateo County, California
 South Bay, California
 Valley of the Moon, California

Clubs of Traditional Performance

Region One

New York City-Manhattan, New York
Pioneer Valley, Massachusetts

Region Two

Augusta, Georgia
Baton Rouge, Louisiana
Charlotte, North Carolina
Clearwater, Florida
Indian River County, Florida
Lafayette, Louisiana
Louisville, Kentucky
Montgomery, Alabama
Pensacola, Florida
Richmond Area, Kentucky
Sarasota-Manatee, Florida
Tampa, Florida

Region Three

Cleveland West, Ohio
Indianola, Iowa
Lafayette, Indiana
St. Paul, Minnesota

Region Four

Bartlesville, Oklahoma
Bay Area, Texas
Conroe-The Woodlands, Texas
Corpus Christi, Texas
El Paso, Texas
Hutchinson, Kansas
Midland, Texas
Norman, Oklahoma

Region Five

Anchorage, Alaska
Bellevue-Eastside, Washington
Boise, Idaho
Corvallis, Oregon
Evergreen, Colorado
Laramie, Wyoming
Vancouver, British Columbia

Region Six

Contra Costa, California

Honolulu, Hawaii
Ventura County, California

Pi Beta Phi Spirit Awards

Bloomfield Hills, Michigan
Columbia, Missouri
Contra Costa, California
Lawrence, Kansas
Madison, Wisconsin
North San Diego, California
Philadelphia-Main Line, Pennsylvania
Pioneer Valley, Massachusetts
Red River Valley, North Dakota
Richmond, Kentucky
Salt Lake City, Utah
Tuscaloosa, Alabama

Excellence in Chapter Support

Large Group: Phoenix, Arizona

Small Group: Nation's Capital-D.C.

Excellence in Communication

Overall Winner

San Jose, California

Region One

Northern Virginia
Richmond, Virginia

Region Two

Brevard County, Florida
Clearwater, Florida
Columbia, South Carolina
Louisville, Kentucky
Naples, Florida

Nashville, Tennessee

Region Three

Arlington Heights, Illinois
Bloomfield Hills, Michigan
Chicago-Windy City, Illinois
Glen Ellyn-Wheaton, Illinois
Indianapolis, Indiana
Minneapolis, Minnesota

Region Four

Dallas, Texas
Houston, Texas
Kansas City, Missouri-Shawnee Mission, Kansas
Katy-West Houston, Texas
Oklahoma City, Oklahoma
Richardson-Plano, Texas
Southlake Area, Texas
St. Louis, Missouri

Region Five

Denver, Colorado
Lake Oswego-Dunthorpe, Oregon
Seattle, Washington

Region Six

Palm Springs-Desert Cities, California
Palo Alto, California
Phoenix, Arizona
San Jose, California
South Coast, California
South Orange County, California

Excellence in Community Service

Large Group: Nashville, Tennessee

Small Group: Arlington Heights, Illinois

Excellence in Literacy Initiatives

Large Group: Indianapolis, Indiana

Small Group: Katy-West Houston, Texas

Excellence in Programming

Large Group: Seattle, Washington

Small Group: San Jose, California

Top 10 Alumnae Organizations for Pi Beta Phi Foundation Giving

Phoenix, Arizona
Kansas City, Missouri-Shawnee Mission, Kansas
Oklahoma City, Oklahoma
San Antonio, Texas
Dallas, Texas
Northern Virginia
St. Louis, Missouri
Long Beach, California
San Mateo County, California
Arlington, Texas

Reunions & Anniversaries

ARKANSAS

In June, Arkansas Alphas from 1964–1969 pledge classes held a reunion on the University of Arkansas campus. With the theme “making new memories with old friends,” the women held a Cookie Shine and remembrance ceremony for deceased sisters, enjoyed a Mexican buffet and visited the Crystal Bridges Museum of American Art (pictured).



LOUISIANA

A Golden Arrow celebration was held in Baton Rouge, Louisiana, for members of the Louisiana Beta pledge class of 1962. The Pi Phi sisters celebrated with a luncheon and pinning ceremony, followed by a Cookie Shine at the Louisiana Beta Chapter house.



KANSAS

The Kansas Alpha pledge class of 1977 met for its 35th Anniversary at Cedar Crest, the Kansas Governor’s Mansion. Their pledge sister, First Lady of Kansas MARY STAUFFER BROWNBACK, hosted the Pi Phis. The weekend included dinner and a tour of the residence, a Cookie Shine, a memorial tribute for deceased sisters, brunch and a trip to visit the Kansas Alpha Chapter house.



NEBRASKA

Members of the Nebraska Beta pledge class of 1966 reunited in Washington, D.C. The women toured the city on bicycles and visited the Gallup Poll headquarters. From back left, TINA CHRISTENSEN MILLER, CONNIE CLIFTON RATH, MONA PETERSEN KUNIO, TERESA LUTHER and CHRIS UHER BERANEK. From front left, CONNIE BURGLAND JENSEN, ROXIE LASH WEAVER and MARTY GOTTSCHALK FRAZIER.



2012–2013 Directory

Past Grand Presidents

Carolyn Helman Lichtenberg, Ohio Alpha
Jo Ann Minor Roderick, Oklahoma Beta
Beth van Maanen Beatty, Texas Gamma
Sarah Ruth Mullis, South Carolina Alpha
Emily Russell Tarr, Texas Beta

Officers Emeriti

Grand President Emerita –
 Jean Wirths Scott, Pennsylvania Beta

Grand Council

Grand President –
 Mary Loy Tatum, Oklahoma Beta
Grand Vice President Collegians –
 Cara Ballard Sutcliffe, Illinois Beta-Delta
Grand Vice President Alumnae –
 Cindy Rice Svec, Kansas Beta
Grand Vice President Communications –
 Diane Bielman, California Eta
Grand Vice President Finance –
 Rae Wohlhueter Maier, Kentucky Beta
Grand Vice President Membership –
 Paula Pace Shepherd, Texas Epsilon
Grand Vice President Programming –
 Julie Carney, Texas Beta

Directors

Director Membership – Tina Rivard,
 Pennsylvania Theta
Director Extension – Ana Mancebo Miller,
 Texas Beta
Director Finance/Housing – Ann Warmack
 Brookshire, Texas Beta
Director Philanthropy – Ann Crigger Shaw,
 Arkansas Alpha
Director Communications (Pilot) –
 Rebecca Brannen Lasse, Florida Epsilon
Director Chapter Operations/Advisors (Pilot) –
 Melissa Malone Colvin, Virginia Theta
Director Risk Management – Alexis Janda,
 Nebraska Gamma

Appointed Officers

Fraternity Archivist and Historian – Frances
 DeSimone Becque, New York Alpha
Collegiate Resources Officer (Pilot) – Caton
 Metzler Bredar, Illinois Beta-Delta
Collegiate Housing Officer (Pilot) – Suzette
 Thompson Farrar, Colorado Delta
Collegiate Housing Officer (Pilot) – TBD
Leadership Development Officer – Lisa Masters,
 Georgia Alpha
National Panhellenic Conference Delegate –
 Linda Noel Ibsen, Colorado Beta
NPC First Alternate – Ana Mancebo Miller,
 Texas Beta

NPC Second Alternate – Ashley Dye, Illinois Zeta
NPC Third Alternate – Oriana Bertucci,
 Ontario Gamma
Parliamentarian – Janice Shrader Falk,
 Nebraska Beta

Alumnae Directors/Specialists

Alumnae Region One

Director – Lisa Doll Tovar, Connecticut Alpha
Membership Specialist – Amanda Phillips-
 Haberern, Connecticut Alpha
Programming Specialist – Rachel Torres,
 California Eta

Alumnae Region Two

Director – Sande Schweier Ullmann,
 Oregon Gamma
Membership Specialist – Carrie Tilley,
 Mississippi Alpha
Programming Specialist – Amy Dailey,
 Virginia Zeta

Alumnae Region Three

Director – Suzanne Gill Kriz, Illinois Eta

Membership Specialist – Elizabeth Van Buren
 Kiss, Iowa Gamma
Programming Specialist – Katie Braun, North
 Carolina Delta

Alumnae Region Four

Director – Marla Neelly Wulf, Kansas Beta
Membership Specialist – Teri Kirk Rolph,
 Ohio Eta
Programming Specialist – Audrey Miller
 Pennings, Arkansas Alpha

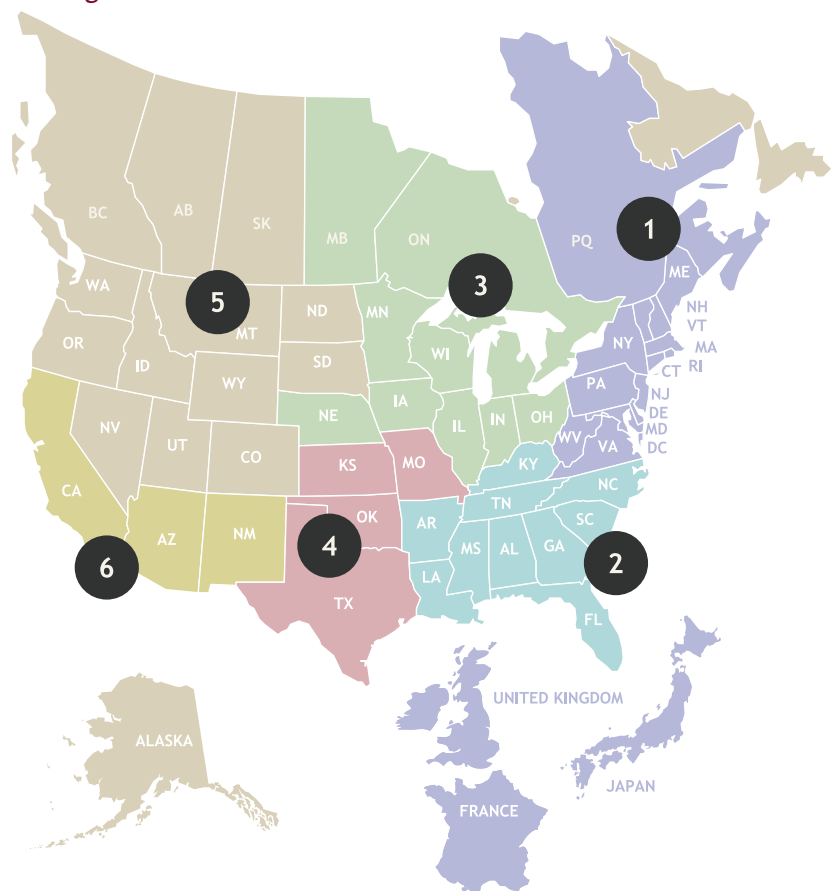
Alumnae Region Five

Director – Lisa Rede Roman, New Mexico Beta
Membership Specialist – Chanel LaChappa,
 California Iota
Programming Specialist – Hillary Moore,
 Colorado Gamma

Alumnae Region Six

Director – Patty Davisson Brown, Kansas Beta
Membership Specialist – Tracy Beaufort
 Whitehead, California Delta
Programming Specialist – Veronica Zukowski,
 California Iota

Alumnae Regions



Collegiate Directors/Specialists

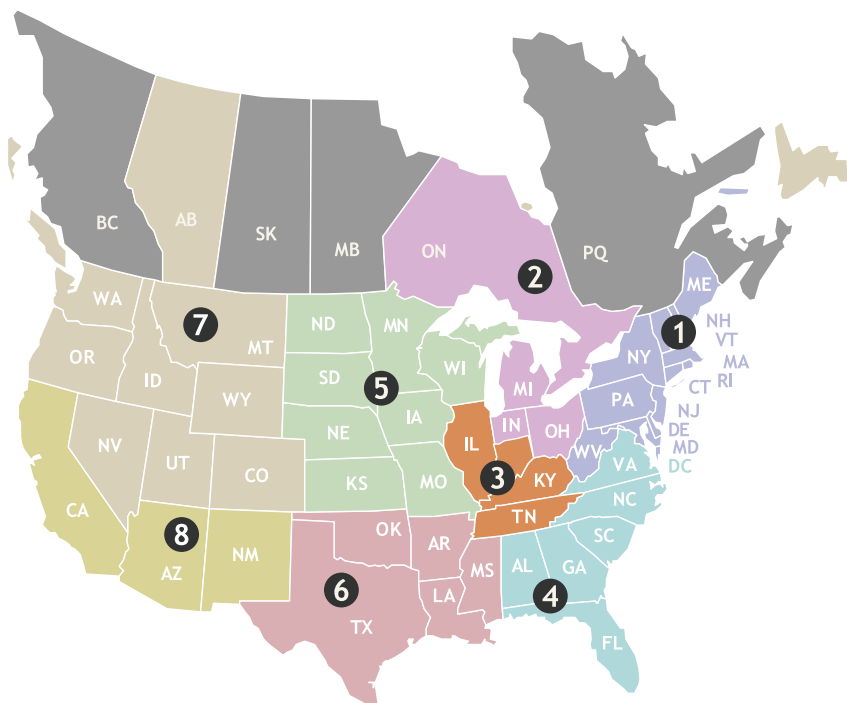
Collegiate Region One

Director – Alison Veit Heafitz, Illinois Zeta
Chapter Operations/Advisor Specialist – Missy Hatteyer Korduner, Connecticut Alpha
Financial/Housing Specialist – Donna Butterworth, Virginia Eta
Membership Specialist – Amy Lorenzen Southerland, South Dakota Alpha
Programming Specialist – Casey Pola, Maine Alpha
Risk Management/Policy Specialist – Michelle Hinkley, Michigan Gamma
Coordinating Specialist (Pilot) – Stephanie Baysinger, California Nu

Collegiate Region Two

Director – Leisa Ebeling Lowrey, Ohio Eta
Chapter Operations/Advisor Specialist – Nadia Husbands Smid, Ontario Alpha
Financial/Housing Specialist – Lynda Breyer Miller, Michigan Alpha
Membership Specialist – Jen Bailey, Michigan Epsilon
Programming Specialist – Stephanie McKinnon, Ontario Gamma
Risk Management/Policy Specialist – Jessica Donda Ledbetter, Michigan Alpha

Collegiate Regions



Coordinating Specialist (Pilot) – Amy Bader Keirle, Georgia Alpha

Collegiate Region Three

Director – Jill Mackey Carrel, Indiana Gamma
Chapter Operations/Advisor Specialist – Kristi Hanlon Marsh, Illinois Zeta
Financial/Housing Specialist – Brittney Jenkins Bolyard, Kentucky Beta
Membership Specialist – Patricia Berryhill, Illinois Iota
Programming Specialist – Kimberly Sisk Crowe, Kentucky Beta
Risk Management/Policy Specialist – Jessica French Steed, Ontario Alpha

Collegiate Region Four

Director – Kathy Wager Ewing, Alabama Gamma
Chapter Operations/Advisor Specialist – Peggy Malone, Georgia Alpha
Financial/Housing Specialist – Rachel Seaton Barnes, Virginia Delta
Membership Specialist – Greer Horne, Virginia Zeta
Programming Specialist – Mary Beth Rhyne Dykes, Alabama Gamma
Risk Management/Policy Specialist – Melissa Kish, Indiana Zeta

Coordinating Specialist – Melissa Forshey, Michigan Gamma

Collegiate Region Five

Director – Amy Strickland Dreller, Arizona Beta
Chapter Operations/Advisor Specialist – Judy Weltsch Klote, Kansas Beta
Financial/Housing Specialist – Melissa Bockhold, Indiana Alpha
Membership Specialist – Jennifer Follett, Texas Eta
Programming Specialist – Leslie Stachowiak, Wisconsin Alpha
Risk Management/Policy Specialist – Kate Blatherwick Pickert, Kansas Alpha

Collegiate Region Six

Director – Emory McGinnis Eison, Mississippi Beta
Chapter Operations/Advisor Specialist – Stephanie Coomes, Indiana Zeta
Financial/Housing Specialist – Susan McDavitt, Mississippi Beta
Membership Specialist – Brenda Foster Huffman, Texas Epsilon
Programming Specialist – Elise Hayes, Oklahoma Alpha
Risk Management/Policy Specialist – Debbie Boyd Sharp, Arkansas Alpha

Collegiate Region Seven

Director – Carly Miller Giesbrecht, Alberta Alpha
Chapter Operations/Advisor Specialist – Jamie Feist Daniels, Montana Alpha
Financial/Housing Specialist – Korinne Hague Rice, Montana Alpha
Membership Specialist – Kate Malloy, Nebraska Gamma
Programming Specialist – Marie Metke Westom, Oregon Gamma
Risk Management/Policy Specialist – Lauren Carrier, California Nu

Collegiate Region Eight

Director – Karen Emberton, Kentucky Beta
Chapter Operations/Advisor Specialist – Kathleen Caldwell Kleinman, Arizona Alpha
Financial/Housing Specialist – Sharon Abeyta-Levey, New Mexico Beta
Membership Specialist – Michele Looman Benedict, Arizona Gamma
Programming Specialist – Jenica McClure, California Lambda
Risk Management/Policy Specialist – Tara Abbott Davis, Arizona Alpha

Fraternity Committees

Audit Chairman – Rae Wohlhueter Maier, Kentucky Beta
Canadian Philanthropies Chairman – Marilyn Clark, Ontario Beta
Carolyn Helman Lichtenberg Crest Award Chairman – Cindy Rice Svec, Kansas Beta
Investment Chairman – Rae Wohlhueter Maier, Kentucky Beta
Local Committee Convention Chairman – Jerelyn Wright Biehl, California Delta
Holt House Committee Chairman – Cheri Raber Patterson, Illinois Theta
Legislative Committee Chairman – Margie Borges, Nebraska Gamma
Music Committee Chairman – Jane Bony Heiserman, California Delta
Leadership and Nominating Committee Chairman – Katie Schwie Perrine, Tennessee Delta

Pi Beta Phi Headquarters

1154 Town & Country Commons Drive
Town & Country, Missouri 63017
Phone: (636) 256-0680
FAX: (636) 256-8095
email: headquarters@pibetaphi.org
website: www.pibetaphi.org
Executive Director – Juli Holmes Willeman, Iowa Beta
Assistant Executive Director – Katey Newell Hobbs, Missouri Alpha
Fraternity Controller – Susan Mertz
Human Resources Director, Headquarters – Margo Wilton Lesser, California Gamma
IT Director, Headquarters – Jodi O'Toole
Marketing & Communications Director, Headquarters – Eily Cummings
The Arrow Editor – Constance Dillon, California Delta
Member Services and Programming Director, Headquarters – Shawn Eagleburger
Creative Director – Tim Steele
Internal Legal Counsel – Michelle Murrell Willbanks, California Eta
Pi Phi Express – (800) 322-1867

Consultants

Leadership Development Consultants – Emily Chambers, California Theta; Ashley Hallowell, Illinois Eta; Molly Johnson, Michigan Gamma; Jennifer Mason, Texas Delta; and Shannon Winter, California Kappa
Resident Leadership Development Consultants – Jillian Conrad, Utah Alpha; Caroline Daly, North Carolina Delta; Emily Jones, Virginia Delta; and Victoria Pinciotti, Ohio Iota.

Holt House

402 E. First Avenue
Monmouth, Illinois 61462
Phone: (309) 734-3988
Curator – Denise Turnbull, Illinois Alpha
Hours – Wednesday and Friday, 9 a.m.–5 p.m.
Other times by appointment only.

Fraternity Insurance Representatives

Property and Liability Insurance
MJ Insurance, Inc., Sorority Division
P.O. Box 50435, Indianapolis, Indiana 46250
Phone: (888) 442-7470
website: www.mjinsurance.com/sorority

Pi Beta Phi Fraternity Housing Corporation

FHC Board of Directors

President – Lyn Arnot Clark, Texas Alpha
Vice President – Eileen O'Neil Grigutis, Kentucky Beta
Secretary – Kathy Wasiele Bach, Connecticut Alpha
Treasurer – Lisa Gamel Scott, Colorado Alpha
Ex-Officio Member – Rae Wohlhueter Maier, Kentucky Beta
FHC Advisory Committee – Leah Cero Fitzgerald, Kansas Beta

Fraternity Housing Corporation Office

1154 Town & Country Commons Drive
Town & Country, Missouri 63017
Phone: (636) 256-0680
FAX: (636) 256-8095
email: fhc@pibetaphi.org
Executive Director – Rebecca Culver Randolph, Oklahoma Alpha

Pi Beta Phi Foundation

Board of Trustees

Foundation President Emerita – Ann Dudgeon Phy, Texas Alpha
President – Kathy Swinea Nevill, Tennessee Gamma
Vice President Development – Jan Kincaid Clifford, Indiana Delta
Vice President Finance – Karen Consalus Price, Missouri Alpha
Secretary – Karen Sulley Thorn, Nebraska Beta
Trustees – Beth Seidelhuber Sordi, California Kappa; Mary Rakow Tanner, Maryland Beta; and Beth Torres, Illinois Zeta.
Ex-Officio Members – Mary Loy Tatum, Oklahoma Beta and Lyn Arnot Clark, Texas Alpha

Foundation Ambassadors Council

Alumnae Region One – Kristie Callahan Gill, California Theta
Alumnae Region Two – TBD
Alumnae Region Three – Laurie Hoskins, Iowa Alpha
Alumnae Region Four – Leigh Mossman Pauling, Texas Delta
Alumnae Region Five – Ruth Walsh McIntyre, South Carolina Alpha
Alumnae Region Six – Kim O'Brien, Ohio Zeta (FAAR Chairman)
Collegiate Region One – Mary Alice Classen Tinari, North Carolina Beta (FACR Chairman)
Collegiate Region Two – Betsy Harris Cantlie, New York Gamma
Collegiate Region Three – Emily Nicholson Richmeier, Tennessee Delta
Collegiate Region Four – Hannah Muehlbauer, Indiana Gamma
Collegiate Region Five – Julie Wightman Taylor, Texas Beta
Collegiate Region Six – Hayley Zimmerman, Oklahoma Beta
Collegiate Region Seven – Sherrie Pendley Liebsack, Idaho Alpha
Collegiate Region Eight – Daphney Bitanga, California Eta

Foundation Committees

Investment and Audit Committee Chairman – Karen Consalus Price, Missouri Alpha
Development Committee Chairman – Jan Kincaid Clifford, Indiana Delta
Communications Committee Chairman – Beth Torres, Illinois Zeta
Emma Harper Turner Fund Committee Chairman – Gina Garrison Jones, Nebraska Beta
Undergraduate Scholarship Committee Chairman – Jacqueline Vo, California Lambda
Graduate Fellowship Committee Chairman – Mallory Wightman Rogers, Oklahoma Alpha
Alumnae Continuing Education Scholarship Committee Chairman – Stacy Warren, Kansas Alpha

Pi Beta Phi Foundation Office

1154 Town & Country Commons Drive
Town & Country, Missouri 63017
Phone: (636) 256-1357
FAX: (636) 256-8124
email: fdnd@pibetaphi.org
Executive Director – Teri Chadwick, CFRE

In Memoriam

Because of space constraints, *The Arrow* will only print the entirety of an obituary for a past Grand President. If you know a sister who has died, please inform Pi Beta Phi Headquarters. Names will only be listed in *The Arrow* if accompanied by a published notice, including those names entered electronically via eReports, Pi Phi's online reporting system. Published notices include a newspaper or newspaper website obituary, a funeral program/prayer card or a listing in a college/university alumni newsletter. Email Alison Bauer at alison@pibetaphi.org or mail to Headquarters.

In Memoriam lists the name and initiation year of each member who has died.

Alabama Alpha

Betty Chapman Bland, 1959

Alabama Beta

Kathleen Peacock Bruhn, 1953

Judith Keith Hand, 1952

Blanche "Betty"
Spain Houseman, 1951

Alberta Alpha

Barbara Gillman
McDougall, 1940

Marilyn Diamond
Miller, 1941

Arizona Alpha

Joyce Ballard Ferris, 1952

Lucille Johannessen
Roca, 1941

Eleanor Smith Savage, 1931
Monte Fariss Whitaker, 1928
Mary Trezell Vincent, 1940

Arkansas Alpha

Emily Tiller Bransford, 1948

Mary Thomas Cox, 1951

Kay Campbell Gude, 1977

Jane Cole Hamilton, 1942

Eve Dilley Irwin, 1951

Dorothy Boon
McClanahan, 1942

Feriba Thomas McNair, 1939

Thelma Shannon
Ruddell, 1945

Ina Nicholas Rutherford, 1949

Charlotte Wacker Wortz, 1941

California Beta

Elizabeth Humann
Alford, 1943

Mary Schuler
Henderson, 1950

Marie Kahl, 1940

Madeline Goodrich
McLaughlin, 1941

California Delta

Elda Hite Coleman, 1956

Lee Cook Cuyler, 1946

Marti Hlavacek, 2008

Dorothy Stanley
Thompson, 1939

California Epsilon

Johna Kimball Chaney, 1953;
affiliated California Beta

Sydney Shook Shank, 1960

Virginia Hogan Warner, 1949

California Gamma

Betty Oster Berish, 1945

Barbara Case Gauntt, 1940

Ellen Thomasson
Malecek, 1990

Elaine Prudhon
O'Donnell, 1946

Evelyn McGowin
Surgener, 1929

Gwendolynne Troutt
Webb, 1951; affiliated
Arkansas Alpha

Elsie Rush Williams, 1947

California Zeta

Meredyth Christiansen
Hentschke, 1950

Chantelle Tavshanjian, 2009

Colorado Alpha

Janet Larson Bainbridge, 1946

Margaret Kunsmiller
Brown, 1932

Marjorie Drake Butcher, 1937

Claire Anderson
Lindgren, 1953

Marguerite Kellerman
Paty, 1940

Elizabeth Nagle Smith, 1954

Jean Zurick Smith, 1942

Maurine "Meem" Walker
Paulson, 1953

Jean Jens Wehner, 1939

Colorado Beta

Marcene McKnight
Bonny, 1956

Imogene Wilhite
Chapman, 1949

Betty Stovall King, 1931

Margaret Brown Rhoads, 1943

Frances Trott Robinson, 1936

Sally Sheridan Sizemore, 1941

Colorado Delta

Michelle Vivona
Heffernan, 1986

Connecticut Alpha

Farrie Mariner Clark, 1949

D.C. Alpha

Martha Runner Bray, 1952;
affiliated West Virginia Alpha

Barbara Borrer Warden, 1945

Florida Alpha

Louise Fugate
Woodbery, 1943

Florida Beta

Mildred Woodward
Hiegel, 1940

Florida Delta

Alicia Derin Andreou, 1993

Florida Epsilon

Helga Rogge Schwarz, 1981

Florida Gamma

Jean Mora Hodge, 1949

Susan Kaye Frankland
Knight, 1962

Mary Anthony Smith, 1941;
affiliated Florida Beta

Georgia Alpha

Lynn Wimberly Burson, 1970

Cynthia Thomas Cornish,
1966

Margalyn Manning
Pickering, 1944

Rebecca Lester Rumpler, 1940

Daisy Andrews Smith, 1944

Elaine Fuller Walsh, 1939

Idaho Alpha

Elizabeth Bales
Charamuga, 1940

Shirley Lint Greif, 1954

Dorothy Nixon
Rundquist, 1940

Illinois Alpha

Jean Shanks Alexander, 1940

Nadine Knights Dodge, 1932

Frances Bryson Morgan, 1936

Grace Walker Smedberg, 1943

Diane Dunlap La Spisa, 1956

Illinois Beta-Delta

Marion Beatty Doyle, 1936
Mary Phyllis Gerth
Baumer, 1945; affiliated
Oregon Gamma
Margaret Johnson Clark, 1944
Catherine Lackland
Gunnison, 1947
Janet Gainer Hall, 1956
Beverly Shaw
McNamara, 1945
Jean Holmes Stott, 1933

Illinois Epsilon

Janie Slemph Burgess, 1956
Mary Ellen Clark
Christensen, 1954
Anne Curtiss Collett, 1948
Patricia Sheppard Felton, 1955
Natalie Smart Larrabee, 1949
Mary Brookings
Imrie-McGowan, 1943
Bonnie Pick, 1943
Frances Coleman Powell, 1928

Illinois Eta

Joanne McDavid Baird, 1937
Marlene Blasingame
Bergman, 1954
Marylou Evans Hicklin, 1951
Joan Weishaar Jones, 1949
Charlotte Lyon, 1950
Lenore Scherer Wells, 1948

Illinois Theta

Patricia Murphy
Adamson, 1947
Ann Taylor Farley, 1954
Myra Kingston Heger, 1948
Geraldine Lamb Nelson, 1947
Joan Vespa O'Dea, 1951

Illinois Zeta

Dorothy Carmichael
DiIorio, 1946
Mary Ruth Tate Elfe, 1950
Mary-Frances George
Gillan, 1940
Mary Courteol Kasch, 1966
Helen Schnepf Mauney, 1941
Dottie Himes Mooney, 1948
Allene Eberle Nichols, 1944
Nancy Brown Stoneberg, 1945

Indiana Alpha

Betty Bevis Buhner, 1939
Nancy McIntosh
Gilbreath, 1942
Martha Lewis Keucher, 1940
Gene McCurry
Kneeburg, 1944
Helen Seybold Sullivan, 1931

Indiana Beta

Susan Gastineau
Flanders, 1950
Gyneth Wilson Fredbeck,
1946, affiliated Indiana Alpha
Nancy Chloupek
McClain, 1966
Barbara Davis
McMurray, 1943
Betty McComb Yost, 1948

Indiana Delta

Mary Losey
Craig-Jerrell, 1941
Suzanne Flint Fifer, 1955
Janeth Dixon Friend, 1940
Mimi Schmidt
Ledyard-Brown, 1943
Mary Jo Cochran
Loveridge, 1948
Kathryn Busard Roller, 1936,
affiliated Nebraska Beta
Elizabeth Lisle Sessions, 1945
Susan Mayer Stoutland, 1943

Indiana Epsilon

Mary Sloop Cabler, 1949
Millicent Chapman
Lewellen, 1951
Barbara Ocheltree Stepp, 1948
Carolyn Duncan Young, 1956

Indiana Gamma

Marthalou Schoener
Hill, 1928
Martha Hart Lewis, 1941
Ruth Bell Smith, 1940
Camilla Wright
Wottring, 1942

Indiana Zeta

Nancy Neff Crankshaw, 1953
Sarah Mann Hewitt, 1952
Laraine Isaac, 1966

Iowa Alpha

Betty Wright Hall, 1943
Lucille Carlson Kreamer, 1942
Beth Rochefort, 1944
Doris Ogburn Schlatter, 1931

Iowa Beta

Marjorie Coy Barnett, 1931
Charlotte Schrier Klyn, 1935
Barbara Stevens
Lafollette, 1944
Codyne Luse McDonald, 1945
Muriel Johnson
Tochterman, 1951

Iowa Gamma

Anne Kennedy Hovey, 1940
Jill Thompson
McDonald, 1978
Ramona Caslavka
Schmidt, 1941

Iowa Zeta

Gloria Kelly Gates, 1944
Lennadore Schilleter
Mark, 1956
Marilyn Steele Penn, 1962
Gwen Owen Stone, 1962

Kansas Alpha

Jane Veatch Barber, 1940
Harriet Darby Gibson, 1937
Betty Billingsley Wilson
Pfutzenreuter, 1954
Sally Fitzpatrick Postma, 1943
Susan Stuckey Sully, 1966
Jo Ann McCrory
Von Ruden, 1945
Elizabeth Ranney
Youmans, 1931

Kansas Beta

Carol Fiser Cannon, 1973
Lois Smith Notley, 1936
Fran Boyd Logback, 1959

Kentucky Alpha

Ann Bowen Bishop, 1952
Mary Anne Nofsinger
Edger, 1941
Mary Davis Gossman, 1940
Helen Jennings
Marcuccilli, 1937

Kentucky Beta

Margaret Crapster
Neltner, 1971

Kentucky Gamma

Karen Sue Jackson, 1976

Louisiana Alpha

Marcelle deBuys Ellis, 1955
Donna Reese Godwin, 1951
Rosemary Carrere
Palfrey, 1944
Francoise Billion
Richardson, 1945
Wilder Breckenridge
Selman, 1957

Louisiana Beta

Jean Steib Dubiel, 1953
 Kay Godfrey Ellender, 1963
 Margaret Andress
 Gilbert, 1939
 Jennifer H. Lewis, 1996
 Brent Fenet McGinley, 1959
 Anne Hatfield Oliver, 1953;
 affiliated Georgia Alpha

Maine Alpha

Carol Stevenson Abbott, 1956
 Carole Griney Ford, 1952
 Viola Purinton Giffin, 1929
 Evangeline Anderson
 Jackson, 1937
 Nancy Carroll
 Weaver Mello, 1957

Manitoba Alpha

Elisabeth Alexander
 Bevis, 1955
 Helen Kennedy Macklin, 1946

Maryland Alpha

Marieanne Porter Dodge,
 1940
 Virginia Bongardt
 Eldridge, 1950
 Gertrude Gale Lynn, 1934

Maryland Beta

Kathleen McDonald Fuss,
 1966

Massachusetts Alpha

Nancy Shaw Bolton, 1945
 Mary Dunlap Ecuyer, 1956
 Barbara Huse Stackpole, 1935
 Theophane Burke
 Woodruff, 1946

Massachusetts Beta

Janet Smith Birnie, 1948
 Betty Young Huening, 1947

Michigan Alpha

Rita Notestine Good, 1967

Michigan Beta

Mary Jordan Davis, 1939
 Elizabeth Woodhams
 Parker, 1932
 Shirley Hassard
 Van Der Kar, 1941

Minnesota Alpha

Marilyn Clark
 Halvorson, 1942
 Janet Beggs Helgen, 1954
 Josephine Lovell Weaver, 1935

Mississippi Beta

Mittie Welty Thompson, 1965

Missouri Alpha

Virginia Heifner Cox, 1951
 Ginger Brice Hardie, 1955
 Mindy Dianne Hobbs, 1993
 Geraldine Klein McKee, 1935
 Catherine Sigmund
 Murch, 1989

Missouri Beta

Marian Grimm
 McClintock, 1941
 Marge Welek Murphy, 1946

Missouri Gamma

Pat Evans Lohmeyer, 1950

Montana Alpha

Wadine Huntley
 Cummins, 1933
 Rosemary Olson Jany, 1973
 Harriet McCord Paris, 1939
 Helen Butterfield Roys, 1941

Nebraska Beta

Eleanor Foley Roberts, 1927
 Marilyn Cain Semrad, 1942
 Ruth Curtiss Swalley, 1948
 Marion Norall Young, 1948

Nevada Alpha

Nan Howell Spina, 1953
 Rose Marie Faul
 Winslow, 1947

New York Alpha

Mildred Wicke Hinkle, 1932
 Claire Haswell
 Randolph, 1942
 Nan Thompson True, 1944

New York Delta

Philly Edmunds Dake, 1945
 Anita Sargent Leonard, 1951
 Mary Joseph Perry, 1940
 Ellen Carnell Seaburg, 1935

New York Gamma

Helene Lagergren Lehr, 1953
 Elsie Tupper, 1939

North Carolina Alpha

Eliza Rose Bagby, 1935
 Shirley Hartzell
 McDowell, 1944
 Jinnette Hood Ellis, 1942
 Jane Parker Johnson, 1947
 Sallie Lee Walker, 1947

North Carolina Beta

Virginia Haile Ramsey, 1939;
 affiliated Maryland Alpha
 Donna Perkins Baltis
 Wells, 1949

Ohio Alpha

Mary McCune Black, 1934
 Jane Finsterwald Long, 1942
 Helen Motz Taylor, 1933
 Dorothy Smith
 Richardson, 1938
 Jane Grover Scheel, 1947

Ohio Beta

Ann Williams Brown, 1944
 Jeanne Kelly Foster, 1940
 Louise Fallon Hoag, 1948
 Martha Moore Kohr, 1944
 Elisabeth Griffin
 Weadock, 1964
 Mary Moulton Witte, 1946
 Suzanne Baumann
 Zuber, 1932

Ohio Delta

Jane Roderick Ballard, 1943
 Mary Fawley Brodd, 1944;
 affiliated Indiana Delta
 Lucile Hittle Grassi, 1954
 Jeannie Goubeaux Morris,
 1954; affiliated Illinois Epsilon

Ohio Epsilon

Betty Fowler Andrews, 1962
 Barbara Stevenson Viest, 1950

Ohio Zeta

Gloria Humbert Doench, 1953

Oklahoma Alpha

Marilyn Pearson Choate, 1954
 Liz Wheatley Coppedge, 1955
 Anna Boylin Malcolm, 1934
 Mary Ann McDowell
 Jacklin, 1949
 Jean Bonney McGill, 1959
 Mary Menefee Sebree, 1951

Oklahoma Beta

Leah Mignon Putty
 Albers, 1943
 Shirley Humphrey
 Burgin, 1956
 Phyllis Gouin Kelly, 1946
 June Loy Tucker, 1945

Ontario Alpha

Jean Robertson
 Carruthers, 1939
 Mary Seitz Roche, 1941
 Eleanor Warwick
 Statten, 1938
 Gwendolyn Evans
 Sutherland, 1941
 Joyce Simpson Weekes, 1937
 Janet Lewis Digby
 Zimmerman, 1947

Oregon Alpha

Selby Frame Burris, 1944
 Susie Stageberg Keeton, 1980

Oregon Beta

Marjorie Hunt Ridgway
Burke, 1940; affiliated
California Alpha
Alice Reed Moore, 1934

Oregon Gamma

Sonja Peterson Behrens, 1957

Oregon Delta

Barbara Halen, 1960

Pennsylvania Alpha

Jean Walton Noyes, 1929

Pennsylvania Beta

Catherine Windsor
Bowe, 1941
Mary Henderson
Layden, 1944

Pennsylvania Epsilon

Julie McCoy Ferrazzani, 1983
Nancy Bird Teague, 1954

Pennsylvania Gamma

Elise Howland Koehler, 1953
Myra De Palma Reimer, 1940

South Carolina Alpha

Margaret Bailey Bennett, 1938
Wilbur Kirkland Hayes, 1936
Elizabeth Rollins Larsen, 1945

South Dakota Alpha

Lucy Smith Colby, 1947
Jean Coplen Crawford, 1940
Genevieve Howe
Spurdon, 1928
Jeanne Gapp Sullivan, 1937

Tennessee Alpha

Alice Springer, 1954
Julie Ingram Tryon, 1985

Tennessee Beta

Nancy Pearre Katz, 1946
Helaina Vial Meara, 1980
Azile Whittemore Winn, 1944

Texas Alpha

Martha Wiggins Bailey, 1936
Margaret Whisenant
Saunders Block, 1939
Eleanor Grimes Butt, 1940
Bonne Liston Craig, 1958
Jane Woodward Elioseff, 1960
Margie Roster Fuquay, 1944
June Gripper Grissom, 1942
Carolyn Brock Hudson, 1946
Elizabeth Woodward
Jones, 1933
Virginia Jones Kent, 1942
Hattie Wallace Park, 1937
Rosemary Hemmingson
Perry, 1943
Betsy Russell Quin, 1938

Texas Beta

Nancy Bluntzer Gandy, 1958
Eris Martin Loomis, 1945
Betty Bright Madole, 1937
Gene Bell Miller, 1941
Margaret McCord
Ramsey, 1940
Grace Neuhaus
Richards, 1954
Gloria Milton Straus, 1954
Ouida January West, 1938

Texas Gamma

Lucy West Hamilton, 1953
Beverly Singley Junell, 1967
Ann Lee Turner, 1953

Utah Alpha

Helen Ray Aadnesen, 1936
La Rue "Claudia" Crowell
Abplanalp, 1954
Margaret Boud Coombs, 1935
Patricia Isgreen Johnson, 1940
Ruth Summerhays Rich, 1938
Gloria Evans Morrison, 1953
Marjory Parrish Smith, 1933
Frances Parsons Wunder, 1933

Vermont Beta

Marion Herberg Klandl, 1933
Martha Douglass
Peterson, 1936

Virginia Alpha

Randolph Arnold
Aufranc, 1926
Sara French Brown, 1948;
affiliated Louisiana Alpha
Deane Shafer Colby, 1957

Virginia Gamma

Jane Ayers Davis, 1933
Frances Anderson
Endicott, 1934
Catherine Lee Landess, 1952
Helen Young Langton, 1945
Ruth Sharrett Yount, 1933

Washington Alpha

Nancy Johnson Anklam, 1942
Madelene Hunt
Kantarowski, 1958
Peggy Worthley King, 1937
Dorothy Fisher Kirk, 1928
Jeanne Butts Marks, 1952
Sharon Wolfe Moore, 1952
Helen Feht Painter, 1931
Helen Gilkey Tucker, 1937

Washington Beta

Phyllis Hinkley Baltzer, 1944
Carol Adams Ellis, 1934
Jill Ruth Gotzian, 1979
Joan Baken Hattemer, 1958
Mary Nelson Logan, 1935
Elizabeth Corfman
Timmons, 1943
Muriel Peterson Tugaw, 1937

Washington Gamma

Nancy Riehl Hoff, 1948

West Virginia Alpha

Virginia "Ginger" Gundstrom
Hedges, 1948
Roberta Wildman Hill, 1947

West Virginia Gamma

Clare Peiser Goodman, 1969

Wisconsin Alpha

Barbara Mueller
Bachman, 1953
Peggy Perkins Casey, 1939
Janet Bickler Crawford, 1938
Barbara Dudley Shaw, 1936
Peggy Jamieson Winkler, 1940

Wisconsin Beta

Margaret Perrin Smith, 1930

Wyoming Alpha

Leslie Smith Andersen, 1941;
affiliated Iowa Gamma
Nadine Glidden Marks, 1956
Lynne Bailey Peck, 1954
Abbe Dale Wells, 1977

Pi Phi Express

X451
OILCLOTH TOTE
\$36



X413
SHOWER WRAP
\$30



X415
OILCLOTH
COSMETIC
BAG
\$21.50



X425
HAIR TIES
\$10

X721
KNICK KNACK
TRAY
\$20

ΠΒΦ



X200
POLAR FLEECE
JACKET
\$60

X450
RUGBY STRIPE
TOTE
\$32

X204
POLAR FLEECE
PULLOVER
\$54



X710
CREST
ORNAMENT
\$25

X708
CHRISTOPHER
RADKO™
ARROW
ORNAMENT
\$48

X709
CLOISSONÉ
ORNAMENT
\$38



X720A
ARROW BALL
ORNAMENT
\$20



X720C
CHEVRON BALL
ORNAMENT
\$20



X458
ORIGINAL TOTE
\$88

X418
ZIPPITY-DO
MAKEUP BAG
\$38

X624
TUMBLER
\$16

X423
MURFETTE SCARF
\$78

X428
iPHONE® COVER
\$28
(Cover fits 4S/4)

X424
WRISTLET
\$38

Lilly Pulitzer®



MD125
STACK RING
\$70
Stainless Steel

MD144
OVAL INCISED
RING*
\$100



MD158
OFFICIAL CREST
RING*
\$125



PX515
ARROW WRAP
RING
\$28



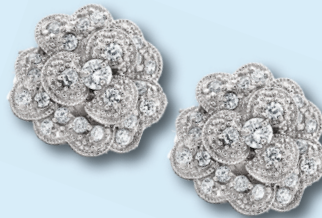
PX514
ANGEL BAND
RING
\$28



PMD198
CARNATION
RING
\$40



PMD225
CARNATION
NECKLACE
\$40



PMD199
CARNATION
EARRINGS
\$40

*Indicates ring must be special ordered.

MD188
OVAL DISK
NECKLACE
\$40



X510
GREEK LETTER
LARIAT
NECKLACE
\$45



MD187
FESTOON
NECKLACE
\$32



PX520
FESTOON
ARROW
NECKLACE
\$125



PX519
FESTOON
ARROW
NECKLACE
\$30



MD165
ANGEL
PENDANT
\$32



PX511
ANGEL WING
PENDANT
\$16



MD141
CREST
PENDANT
\$38



X503
CURLY
LAVALIERE
\$14



MD175
CREST
PENDANT
\$42



All jewelry is sterling silver or 10k gold unless otherwise noted.

WWW.PIBETAPHI.ORG/STORE

In Order to be Leaders in the Greek community, Collegians Needs to Live by Their Values

By: OMO OGBOMO, Michigan Epsilon

This summer was very special for me as I spent it working on becoming a better leader.

I attended the Undergraduate Interfraternity Institute (UIFI), courtesy of a wonderful scholarship from Pi Beta Phi Foundation. UIFI is a five-day program bringing together fraternity men and sorority women to explore, define and enhance their leadership skills, personal awareness, commitment to the Greek community and grow to expect values-based action from themselves and those they lead.

During my week at UIFI, I deepened my appreciation for being a Greek woman as well as my appreciation for my Pi Phi sisters. I discovered I have the potential to be an asset to my chapter by helping grow future leaders among my sisters. I want to build our bonds of sisterhood and work together to keep Michigan Epsilon strong in the future.

I'm so grateful I also had the opportunity to meet with other young Greek students who want to bring positive change to their organizations. I had an eye-opening experience when everyone had a chance to recite their open ritual, mottos and creeds. I realized it did not matter what letters we wore on our chests. I realized what matters is that we all stand for exactly the same things, written out different ways. I feel as young people, Greeks become too focused on



This summer, Michigan Epsilon OMO OGBOMO (sitting on the bench second from left) attended UIFI, thanks to a scholarship from Pi Beta Phi Foundation. Omo is pictured with other UIFI attendees.

things that deviate from our values and the goals of our organizations. The sooner we all realize this, the better futures we will all have.

I am humbled and honored to have been given this life-changing opportunity by the Foundation. I believe every Greek student should go to a program like UIFI, because it makes you think about why you chose to join a Greek organization in the first place and also realize what you can do to enhance the Greek experience. I know I will never forget what I learned, and I look forward to helping my chapter live by our Pi Phi core values in everything we do.

Tennessee Gamma Chapter Breaks Ground for New Chapter House at the University of Tennessee

In May, the Tennessee Gamma Chapter at the University of Tennessee celebrated the groundbreaking of its new chapter house.

The house is part of the University's "Sorority Village at Morgan Hill." The village will be made up of 13 sorority houses, which are being built in phases. The Pi Beta Phi house is scheduled for completion in March 2013.

The three-story Greek Revival style house will include formal living areas, a chapter room, a study room with built-in shelving, a covered, brick outdoor eating area and sleeping rooms for 36 women.

To learn more about the new Tennessee Gamma Chapter house, visit www.tngammahouse.com.



In May, the Tennessee Gamma Chapter House Corporation celebrated the groundbreaking of the new Pi Beta Phi chapter house. From left, Tennessee Gammias JOAN EDINGTON WALLACE, DEOBRAH GRIFFITH RODGERS, DEBORAH FRIEDLI DURRETT and KRISTI BERNARD BENNETT.

The Arrow Reader's Guide

The Arrow of Pi Beta Phi is the official quarterly publication of Pi Beta Phi Fraternity. The purpose of *The Arrow* is to present matters of value to Pi Beta Phi; furnish a means of communication among collegiate chapters, alumnae organizations and officers; and represent the worthiest interest of Fraternity women.

CONTACT THE ARROW:

The Arrow of Pi Beta Phi Fraternity
1154 Town & Country Commons Drive
Town & Country, Missouri 63017
TheArrow@pibetaphi.org
Phone: (636) 256-0680 Fax: (636) 256-8095

HOW TO RECEIVE THE ARROW

Collegians receive quarterly issues of *The Arrow* each year with payment of collegiate dues through their chapter. Individual copies are mailed to each undergraduate member's permanent address, and each Pi Beta Phi chapter receives six copies.

The Fall *Arrow* is mailed to all alumnae. Dues paying alumnae are mailed the winter, spring and summer issues. *The Arrow* is posted online, and non-dues paying alumnae who have a good email address listed with Headquarters (HQ) receive an email notification. Messages are also posted on the Fraternity's official Facebook page and Twitter when the magazine is available online.

To receive four hard copy issues of *The Arrow*, pay your \$25 annual Fraternity alumna dues to your local alumnae organization or directly to HQ by mailing a check to Pi Beta Phi Fraternity, Alumna Dues, 1154 Town & Country Commons Drive, Town & Country, Missouri 63017. You can also pay your dues online at www.pibetaphi.org.

HOW TO MAKE AN ADDRESS CHANGE OR NAME UPDATE

Visit the profile section of the website, or email your name and/or address changes to headquarters@pibetaphi.org. You may also call Pi Beta Phi HQ at (636) 256-0680 or mail a written notice to Pi Beta Phi Headquarters.

LETTERS TO THE EDITOR

Email your letter to the Editor at editor@pibetaphi.org. Please include your full name and chapter of initiation. *The Arrow* reserves the right to publish any letter received. Letters may be edited for space and clarity.

HOW TO GET PUBLISHED

All Pi Phis are encouraged to submit news and stories to *The Arrow*. All submissions are subject to editing for content, grammar and space constraints. When submitting a story, be sure to include a member's preferred chapter, first, maiden and last names. As a general rule, *The Arrow* does not print stories about weddings, engagements, pinnings or birth announcements. Visit *The Arrow* Web page for more information and to download Pi Beta Phi's Photography Guidelines. We cannot guarantee the publication of any submission. We receive so many and space is limited.

ARROW SUBMISSION DEADLINES

Winter Issue: November 1 Summer Issue: May 1
Spring Issue: February 1 Fall Issue: August 1

Pi Beta Phi Welcomes New Resident Leadership Development Consultant

Pi Beta Phi is excited to welcome Utah Alpha JILLIAN CONRAD as a Resident Leadership Development Consultant for the Wyoming Alpha Chapter at the University of Wyoming.



Jillian graduated from the University of Utah with a Bachelor of Science in marketing and management. She served as Vice President of Fraternity Development, Vice President of Finance and Chapter President. Jillian said her favorite Pi Phi memory was the opportunity to alumnae initiate her mother.

The Leadership and Nominating Committee is calling ...

Pi Phi wants to hear your voice! Nominate the Fraternity's leaders of tomorrow. Submit an ideal slate or nominate candidates for Grand Council and Director positions for the 2013-2015 biennium.

Visit www.pibetaphi.org to submit a nomination form or to self-identify. Nominations are due November 15, 2012.

Carrie Chapman Catt Center for Women and Politics Celebrates 20th Anniversary

The Carrie Chapman Catt Center for Women and Politics at Iowa State University celebrates its 20th Anniversary this year. The center is named after Iowa Gamma CARRIE LANE CHAPMAN CATT, who played an influential role in the women's suffrage movement.

Founded in 1992, the center provides leadership development and educational opportunities in the areas of politics, public policy and administration and public service for more than 3,000 women and men each year.

CORRECTIONS: In the Summer 2012 issue of *The Arrow*, Leadership Development Consultant Molly Johnson, Michigan Gamma, was mistakenly listed with a Bachelor of Arts in political science on Page 20. Molly received a Bachelor of Arts in interior design. The photo printed on Page 23 of attendees at the Gilbert Leadership Conference incorrectly listed the women. Pictured from left is: Texas Etas Ellen Wilson and Paige Toppert, Texas Zeta Laura Ramey Gilbert and Texas Etas Emily Wilson and Emily Josey. *The Arrow* apologizes for these errors and regrets any confusion they may have caused.



Pi Beta Phi Fraternity
1154 Town & Country Commons Drive
Town & Country, MO 63017

CHANGE SERVICE REQUESTED

NONPROFIT
ORGANIZATION
US POSTAGE
PAID
PERMIT NO 1050
COLUMBUS, OH



**PI PHI SISTERHOOD ISN'T JUST
FOR COLLEGE ... IT'S FOR LIFE.**

No matter when you celebrated Bid Day, Pi Phi is a lifelong bond. You are part of a network of more than 190,000 Pi Phi sisters worldwide! Support the future of our sisterhood by paying your \$25 annual alumna dues. Contact your local alumnae organization or visit www.pibetaphi.org.