

# *The Arrow*



## **Pi Beta Phi House Directors: Part-time Hostesses, Full-time Mentors**



Friends & Leaders for Life

PI BETA PHI FRATERNITY

ΠΒΦ

Founded 1867

FOUNDERS

- Emma Brownlee Kilgore
- Margaret Campbell
- Libbie Brook Gaddis
- Ada Bruen Grier
- Clara Brownlee Hutchinson
- Fannie Whitenack Libbey
- Rosa Moore
- Jennie Nicol, M.D.
- Inez Smith Soule
- Fannie Thomson
- Jennie Horne Turnbull
- Nancy Black Wallace

MISSION STATEMENT

The mission of Pi Beta Phi Fraternity for Women is to promote friendship, develop women of intellect and integrity, cultivate leadership potential and enrich lives through community service.

VISION STATEMENT

Pi Beta Phi Fraternity is committed to being recognized as a premier organization for women by providing lifelong enrichment to its members and contributing to the betterment of society.

CORE VALUES

- Integrity
- Honor and Respect
- Lifelong Commitment
- Personal and Intellectual Growth
- Philanthropic Service to Others
- Sincere Friendship

# The Arrow OF PI BETA PHI



## Features

- 4 Pi Beta Phi House Directors: Part-time Hostesses, Full-time Mentors
- 10 Pi Phi History on Display
- 27 Alumnae Advisory Committees Celebrate 100 Years
- 40 Honoring our Diamond Arrows
- 42 How Pi Phis use our Values During Recruitment

Follow us online:



Facebook®  
www.facebook.com/pibetaphi



Pinterest®  
www.pinterest.com/pibetaphi



Instagram®  
www.instagram.com/pibetaphihq



Twitter®  
www.twitter.com/pibetaphihq



LinkedIn®  
www.linkedin.com



YouTube®  
www.youtube.com/pibetaphihq



Pi Beta Phi Blog  
www.piphiblog.org

The Arrow of Pi Beta Phi is published by Pi Beta Phi Fraternity, 1154 Town & Country Commons Drive, Town & Country, Missouri 63017. POSTMASTER: Send address changes to The Arrow of Pi Beta Phi, 1154 Town & Country Commons Drive, Town & Country, Missouri 63017.

Facebook® is a registered trademark of Facebook, Inc.  
Instagram® is a registered trademark of Instagram, LLC.  
LinkedIn® is a registered trademark of LinkedIn Corporation.  
Wordpress® is a registered trademark of Automattic Inc.

Pinterest® is a registered trademark of Cold Brew Labs, Inc.  
Twitter® is a registered trademark of Twitter, Inc.  
YouTube® is a registered trademark of Google, Inc.



View  
*The Arrow*<sup>®</sup>  
 online at  
[www.pibetaphi.org](http://www.pibetaphi.org)

**ARROW EDITOR**

Constance Dillon  
 editor@pibetaphi.org

**MARKETING & COMMUNICATIONS  
 DIRECTOR, HEADQUARTERS**

Eily Cummings

**EDITORIAL STAFF**

Jennifer Whitrom Schmidt  
 Janelle Schroeder  
 Katie Jackson

**GRAND COUNCIL**

Mary Loy Tatum  
 Grand President

Cara Ballard Sutcliffe  
 Grand Vice President Collegians

Cindy Rice Svec  
 Grand Vice President Alumnae

Diane Bielman  
 Grand Vice President Communications

Rae Wohlhueter Maier  
 Grand Vice President Finance

Paula Pace Shepherd  
 Grand Vice President Membership

Julie Carney  
 Grand Vice President Programming

**PI BETA PHI HEADQUARTERS**

1154 Town & Country Commons Drive  
 Town & Country, Missouri 63017  
 (636) 256-0680 • FAX (636) 256-8095  
[headquarters@pibetaphi.org](mailto:headquarters@pibetaphi.org)  
[www.pibetaphi.org](http://www.pibetaphi.org)

# Departments

- 2 Perspective
- 3 From our Readers
- 14 Remember
- 15 Extension
- 18 Literacy
- 20 Campus Living
- 22 Collegiate News
- 31 Volunteers
- 33 In Her Words
- 34 Foundation
- 36 Alumnae News
- 41 Pi Phi Pens
- 43 Reunions & Anniversaries
- 45 In Memoriam
- 46 Pi Phi Express<sup>®</sup>
- 48 News & Notes



15



31



33



36



ON THE COVER: Pi Beta Phi House Directors not only help run chapter facilities, but they also act as mentors and friends to Pi Phi collegians. Pi Phis and House Directors share their favorite memories, beginning on Page 4. Pictured is the Indiana Beta Chapter senior class with their House Director, Draeleen Gabalac.



Member Fraternity Communications Association

## If These Walls Could Talk

All members of Pi Phi share in the rituals of our beloved organization, but each of our chapters has its own unique character entwining its members, the university and local community. Chapter housing is different on every campus, too.



**RAE WOHLHUETER MAIER**  
Grand Vice President Finance  
Kentucky Beta  
University of Kentucky

The Fraternity and Fraternity Housing Corporation (FHC) partner to ensure we obtain safe, affordable housing for our members. We work to locate housing on or near the campus and facilities comparable to other sororities.

Nearly half of our Pi Phi chapters have some residential living space either in a Chapter House Corporation (CHC) or FHC owned/leased house, or a facility that is owned by the university. There are just as many other Pi Phi chapters that have a suite, lodge or other similar meeting/office space dedicated for chapter use.

My sisters and daughters are all sorority members, but none of them were on a campus where residential sorority housing was the norm. Yet, each of them cherishes her sorority experience and has fond memories of her undergraduate days at Duke University, Miami University and Vanderbilt University.

I had the opportunity to live in the Kentucky Beta Chapter house at the University of Kentucky (UK) for three years. Being a Pi Phi and living in the house was life changing for me. Although I was initially apprehensive about moving into the house, I quickly bonded with my roommates, and they are still my very best friends. The second-floor lounge was where we gathered midday to watch soap operas after class or hang out on weekend nights. Our House Director, Mrs. B., knew our favorite foods, and we had a special peppermint ice cream dessert we called “Pi Phi Delight.” We even had a cook from a local French restaurant who prepared our Sunday brunch on her day off — it was a meal we never wanted to miss.

As alumnae, we look forward to going back to our alma mater to tour campus and see the changes. It is such a treat to take a peek in the rooms at the Pi Phi house where we lived and recall the “old days.” CHCs lovingly make changes over the years, with new carpeting, wallpaper, reupholstered couches and chairs, central air conditioning and fire safety sprinklers added, but the love, tradition and sisterhood within those walls never changes.

In the bonds of wine and blue,

A handwritten signature in cursive script that reads "Rae Maier".

Rae Wohlhueter Maier



## You Represent the Pi Beta Phi Brand

I wanted to share how fabulous this past *Arrow* was. Sitting around the Founders' Day celebration table, members of the Conroe-The Woodlands, Texas, Alumnae Club — ranging in initiation years from 1954 to 2006 — all were talking about the branding article and the

power it held. They all felt its relevancy and how impactful it was for all ages. The article showed what a significant role social media plays in our lives today, and how important it is for all of us to represent Pi Phi in a way that would make our founders proud. The discussion then went to the Pi Phi Pens section. Needless to say, it was a wonderful day.

MARLA NEELLY WULF

Alumnae Region Four Director  
Kansas Beta — The Woodlands, Texas

I thoroughly enjoyed the article entitled “You Represent the Pi Beta Phi Brand.” As Assistant Director of Marketing and Communications for my organization, I am our brand manager. Every section of this article hit home with me, as I, and my staff, work to maintain a consistent look and feel across all of our chapters, while battling the improper use of insignia we see coming from our various groups. Kudos to Pi Beta Phi for another fine edition of the magazine, and in particular the informative, well-written article on brand management.

Ryan Bakita

Alpha Sigma Phi Fraternity — Carmel, Indiana



We look forward to hearing from you. Email comments to the Editor at [editor@pibetaphi.org](mailto:editor@pibetaphi.org) or mail them to

Pi Beta Phi Headquarters, 1154 Town & Country Commons Drive, Town & Country, Missouri 63017.

## My Literacy Story: A Brighter Future

How exciting was it for me to read my *Arrow* (while sitting in court) and see the article by Ohio Beta SONIA PHIPPS BROKAW about the efforts for literacy for my employer, the Virginia Department of Corrections (at the Virginia Correctional Center for Women). I greatly applaud the Richmond, Virginia, Alumnae Club for their efforts to bring literacy to those incarcerated; a population that is often discarded or overlooked due to social stigma. I went straight back to work and showed the article to my entire Probation & Parole Office and posted it on our newsworthy board. It was days like today that remind me of how proud I am to be a member our organization.

TONI CERINO

Virginia Delta — Virginia Beach, Florida

## A Note of Gratitude from a Delta Gamma Mother

Wendy Faust's letter touched my heart! Expanding the Greek legacy, rather than the Pi Phi legacy, is often the outcome of recruitment, but is rarely told in the spirit of gratitude. I admire Wendy's openness and excitement for her daughter to experience the sisterhood she had, even if not as a legacy of her organization, Delta Gamma. Wendy's understanding that “being Greek” is enough of a bond to share with her daughter is absolutely inspiring. Thank you, Wendy, for sharing your daughter California Nu HANNAH FAUST with us!

TINA RIVARD

Director Membership  
Pennsylvania Theta — Washington, D.C.

**CORRECTIONS:** In the Spring 2013 issue of *The Arrow*, Illinois Beta-Delta Makenzi Crouch's letter on Page 3 was not attributed to its original source. The letter was an abridged excerpt from the article “Makenzi's Mentoring Experience,” published on the London Pocket's blog: [pi-phi-london.blogspot.com](http://pi-phi-london.blogspot.com). On Page 40, Illinois Alpha Charmayne Brue Smith's first name was misspelled. *The Arrow* apologizes for these errors and regrets any confusion they may have caused.

A light blue door with a silver handle and a decorative sign. The sign is a light yellow, cloud-like shape with a scalloped edge and a blue shadow. It contains the text 'Home SWEET Home' in a mix of fonts. 'Home' is in a black cursive font, 'SWEET' is in a red serif font, and 'Home' is in a black cursive font with a red arrow pointing to the end of the word.

Home  
SWEET  
Home

Not only is her list of responsibilities and duties endless, but her dedication is as well. More than 60 women serve in this role at Pi Beta Phi chapter facilities across North America. The job includes everything from administrator to hostess, friend and confidant. She significantly impacts a chapter's living environment, and she also contributes to the personal development of our members. Who is this person? You may have called her your "House Mom" but her official title is House Director.

## Del Chapman

House Director for Louisiana Beta

It was late winter of 2008, and I was in need of a new life adventure. My real estate business had slumped — the market had crashed — and my only son had informed me he was planning on staying at his out-of-state college for the summer session. One of my Kappa Kappa Gamma sisters suggested I look into becoming a House Director. At first I was aghast; my House Director had been more than 70 years old, and I vaguely remember her from chapter dinners and occasionally venturing out of her apartment to make sure we quieted down in the evening. I soon learned the role of a House Director today has a much broader scope of responsibility, and you don't have to be an experienced bridge player either!

I interviewed with three different schools, and organizations, and realized quite quickly the New Mexico Alpha Chapter of Pi Beta Phi at the University of New Mexico was a perfect fit. The women were amazing, and the chapter's alumnae were incredibly supportive and generous with their time. It was so easy to fall in love with all of them.

When I'm home, my door is always open. I enjoy baking and on weekends, you can often find me in the kitchen making banana bread or cookies for the women. I also feel part of my responsibility, as House Director, is to make sure the women have the tools necessary to move out into the real world after college. Those tools may be as simple as helping them figure out how to do their laundry or as complicated as sorting out relationships or writing resumes.

I am a firm believer the collegiate women should have ownership of their house, which includes picking up after themselves and respecting their sisters and surroundings. Things have changed so much since I was a collegian, but I still hold high standards for the women, and they seldom let me down.

After leaving New Mexico, I have had the opportunity to work with other Greek organizations at different campuses, like the University of Oregon and the University of Maryland, and am so excited to be returning this fall to the Pi Phi fold as the new House Director for the Louisiana Beta Chapter at Louisiana State University. There is something really special about Pi Beta Phi, and I can't wait to be a part of it again. I am so very lucky!



## Maddie Rosa and Stephanie Nolan

Iowa Zeta Chapter President and Vice President of Housing

It is an understatement to say we have a great relationship with our House Director, Jo Fischer. Our relationship with her is so sincere and cherished, the title of "House Director" does not do her justice in our minds. Here at Iowa Zeta, Jo is our friend and mentor, or as we like to call her, our mom away from home. From volunteering as a judge during Greek Week to staying up late to prepare midnight snacks during finals week, she makes our Pi Phi experience as special as can be.

One of the most admirable things about Jo is her enthusiasm to be involved. No matter what the occasion, Jo is all about planning decorations and — of course — the food. Before we go home for winter break, Jo throws a Pi Phi Holiday Cozy. She organizes the whole thing, and we enjoy the most delicious punch, appetizers and desserts. It's festive and warm, and it's the perfect way to relax before our semester finals. She also puts on her gala at the end of the year as a way to say goodbye to the seniors. She is involved with planning our Founders' Day festivities, and this year we even had a chocolate fountain! Clearly, Jo knows a thing or two about hosting an event.

Jo is also there to laugh with us, give us advice or listen to our troubles. Our chapter members can comfortably walk into Jo's room, sit on the couch and just relax. From Iowa basketball games to the Oscars, big TV events are a must in Jo's room. It's traditions like this that allow Jo to stay in touch with every member, living in or out of our house. She is our rock in so many ways, and we are incredibly blessed to have such a strong, generous and loving woman be our House Director.

# WHAT DOES A House Director's DAY LOOK LIKE ?

A residential facility or chapter house is a home for Pi Phi collegians. Even if a collegian does not live in the facility, the chapter suite, dorm or house is a place where she can study, relax and spend time with her sisters. To help maintain these housing facilities, a House Director is employed by a group of local alumnae that serve on the Chapter House Corporation (CHC).

The duties of a Pi Beta Phi House Director can vary from chapter to chapter, but the House Director always works in partnership with the CHC, Alumnae Advisory Committee (AAC) and chapter leadership to run the housing facility. The House Director helps train and supervise other house employees like kitchen staff, supervises maintenance of the housing facility and grounds and arranges for cleaning and repairs.

The House Director also plays an important role in maintaining the safety of a housing facility. She can supervise the securing of a chapter facility at night, in accordance with the chapter's house rules, and also welcomes chapter guests and ensures their comfort. Additionally, the House Director maintains a list of police, fire and other emergency telephone numbers and is familiar with Pi Beta Phi's emergency procedures.

While a House Director is knowledgeable with university, city, state and Fraternity housing rules and regulations, including Pi Beta Phi's Policy and Position Statements, the House Director is not involved in chapter operations or the personal affairs of members. The House Director is present and available to assist chapter members if an illness or personal problem occurs, if requested by a member.

*Samantha Rosier*  
Virginia Theta Chapter President

Our House Director, Miss Carol, is known for being a friendly face on the Washington & Lee University campus. Since Virginia Theta's house is part of the University's Greek village, Miss Carol is a University employee. In that role, she has become one of our chapter's largest advocates on campus. Throughout the year, we often see her at recitals, plays and award presentations for our members where she cheers loudly right in the middle of our Pi Phi section.

Miss Carol also helps our chapter with events. She always volunteers to set up the catering herself and to decorate. She hosts a holiday decorating party the first day back from Thanksgiving break for our chapter and has bought decorations for all different faiths as our chapter has grown. She also is helpful during recruitment week, during which she'll stay up with us until two in the morning gluing nametags and will watch the same dance multiple times while giving her suggestions.

Miss Carol also cares about giving back to the community. She volunteers for a local preschool, and (three times a year) she organizes a get-together for the Pi Phis and students at our chapter house. She will bake cookies for us to decorate, cut socks to make into puppets and bring out the best snacks to make sure the event is a success. And during the year, every Greek woman on campus can drop off donations to local charities in the bins she manages at our house. It was Miss Carol's idea for us to collect used T-shirts for the local women's shelter, and we are now one of its largest donors.

Most of all, Miss Carol is our friend. She's willing to sit and listen to anyone who needs it and gives wonderful advice. Lunches have been known to last three times longer when she is at the table to chat with. Recently, during recruitment, while Virginia Theta's Executive Council introduced Miss Carol to the Potential New Members, she said, "When you hear the women singing 'Honor, Friendship, Loyalty,' they really mean it. Pi Phis care about each other." Our chapter considers itself the luckiest chapter on campus because we have a mentor and friend who cares about us, and lives our values, too.





Indiana Betas with current House Director Ms. G

*Linde Schmidt Wiedow*  
Indiana Beta

My House Director, whom we called Mother Smith, came to Indiana Beta in September 1953. She had attended “House Mothers’ School” at Purdue University that summer with a friend. Both women were widows from Connecticut. Her friend needed a job, but was very unsure of herself, so she urged her friend, Mother Smith, to come with her for moral support. At the end of their course, Mother Smith interviewed and was immediately offered the position of House Director for Indiana Beta.

Manners were important in the 1950s. None of my Indiana Beta sisters wanted to disappoint Mother Smith. Her apartment was just off the living room and she wasted no time in calling one in for a talk when she felt it was necessary. All of us knew exactly where we stood with her and quickly learned it was far better to have her approval and stop by her apartment by choice.

Curfew hours were set for all women on campus by the University and maintained by dormitory counselors and House Directors. No house was ever locked during the day, but “at hours” (when curfew ended), doors were locked for the night. After that moment, you had to ring the bell to be let into the house. Consequences, for the most part, were up to the person with the key. If you abused the rule too often or by too much time, your social life could be severely curtailed. Thus, we were in before the key turned, which also ended some dates (much to one’s relief).

Mother Smith would come into our Great Hall jingling her keys about five minutes before the boys had to leave. If anyone was too rowdy, she quietly reminded him or her to “keep it down in the Great Hall.” If you were a frequent visitor, you knew lingering over that last kiss was not tolerated. At the second jingling of keys, this tall, rather regal woman meant business — as many as 40 dates were out of the house within seconds.

## *Sarah Tankersley* Georgia Alpha

As members of Pi Beta Phi, we all know about the love of sorority sisters. Throughout college, I have made some amazing friends. I have stayed up late laughing and have had many heart-to-heart sessions with them. I know Pi Phis everywhere can relate to this. However, I believe very few can say they have shared memories like this, and more, with their House Director. I, and other Georgia Alphas, are lucky enough to say we have.

Ms. Evelyn Yaros, or Mama Ev as we like to call her, is truly an angel in disguise. As our lovely House Director, she pours her heart and soul into each woman on a daily basis. You can find her in our dining room after dinner, chatting with women and giving advice. If you are sick, she comes to your room to check on you and will even bring your meals if you cannot crawl out of bed. She can tell you something about every member of the chapter, because when you talk to her, she actually listens.

As our chapter's past Vice President of Housing, I was fortunate enough to work closely with Mama Ev. She was by my side through every problem and was an everlasting support system. When I moved back into the house my junior year, I literally dropped everything in my arms and ran to Mama Ev when I saw her, because a summer apart was just too long. Since then, we have remained best friends. When I need cheering up, I will go to the house for dinner because she consistently encourages me and always puts a smile back on my face.

Georgia Alpha is truly blessed to have Mama Ev as our housemother. Like many members of Georgia Alpha, she has been an integral part of my college experience and life. Her love for us has impacted and changed each of us in many different ways. Rudyard Kipling once said, "God could not be everywhere, and therefore He made mothers." God also knew we would leave home and our mother for college, so for us lucky Georgia Alphas, he made Mama Ev.



Georgia Alpha Sarah Tankersley with Mama Ev

## *Kathy Stasiak Hankins* Mississippi Beta Beta Theta Pi Chapter Mother

This fall will be my sixth year as Chapter Mother for the Beta Theta Pi chapter at Ole Miss, and it's been one of the best things I've ever done in my life. Years ago, my son, Richard, invited me to meet his fraternity brothers. It was a difficult time for his chapter, as they were under reorganization and moving to an alcohol-free culture. As I talked with the Beta men, I was very impressed with their dedication to their fraternity, their chapter and to each other.

They were building men of principle, holding their members to a higher standard, and I wanted to do something to help them.

At that time, the Betas didn't have a Chapter Mother, so they asked me to serve as Chapter Hostess during recruitment. I greeted visitors, served lemonade and shook 1,200 hands. It was then I realized the chapter needed more than a hostess — they needed a mother. I became Mama K, going from one son to having nearly 100 sons.

I had no idea how rewarding it would be to work with these young men; they have enriched my life. In return, I hope I am mentoring them as they mature into adulthood. I try to encourage high ethical and moral standards and healthy relationships. An additional blessing has been getting to know the men's parents, who have become dear friends.

In my office, I have a framed quotation from Frederick Douglass: "It is easier to build strong children than to repair broken men." Being Chapter Mother gives me the opportunity to help build strong men. Although I live and work in Omaha, Nebraska (where I am a collegiate psychiatrist), I commute to Oxford, Mississippi, at least once a month to be with this fraternity. I have been asked why I do this. The initial answer was, "Because they're worth it." Over the years, I have added, "And I love them." These men have changed my life, and it's an honor and a joy to be their Chapter Mother.

## Liz Amidon

House Director for California Zeta

I had no idea when I entered the Pi Phi house for the first time that it would become my home for 26 years. I had been offered a job as House Director, and I thought I was just passing through. I accepted the job after a friend of mine, who was the current AAC Chair, asked me to step in on short notice. I didn't know what the job entailed, and I certainly didn't think it would change my life so drastically.

I remember my first Monday night chapter dinner. The dining room was noisy, busy and bursting with energy. I wondered what I had gotten myself into and how I would ever adapt to this new environment. I could see on that first night they needed somebody to organize things — they didn't even have enough place settings for the dining room.

I continue to learn over the years how to fill in and to serve the chapter. I began to anticipate the needs of the members and found ways to make the house a safer, happier and better place to live. I describe my job to others as a part-time hostess, full-time facilities manager and an "as-needed" mentor and friend. I refer to myself as the glue; filling in and helping things stick together.

A question you might be asking by now is what circumstances have caused me to stay so long or what might be the secret to my longevity. I may have some of the answers, but mostly, I always felt at home. I also know that I fit with the character of the house. I realize it's the women's time to shine, and I help out only when I'm needed. I take the time to encourage and to love and to handle "with care" the more sensitive issues. I value the individual, and I try to treat people as I would want to be treated.

I've stayed because of the wonderful Pi Phi alumnae I've worked with, who have made me feel I am a valuable member of the Pi Phi team. I've stayed because of the love I feel for the members of Pi Phi. Over the cumulative years, living and working with more than 900 collegians has been a truly unique experience. In the end, I've stayed because I know how much it has changed me: I am more loving, patient and kind because of this position. ↪



Mississippi Beta Kathy Stasiak Hankins



Virginia Thetas with Miss Carol

## DO YOU WANT TO BECOME A *Pi Phi House Director?*

A full-time House Director is employed at more than 60 Pi Phi chapter facilities. Have you ever thought about serving in this life-changing role? Positions become available each year, depending on the chapter. To learn more about becoming a House Director, please contact the Fraternity Housing Corporation at [fhc@pibetaphi.org](mailto:fhc@pibetaphi.org).

# Pi Phi History on Display

From the moment you step into a Pi Phi suite or chapter house, it's easy to tell Pi Phis are nearby. From arrows hanging on the wall to antique photographs of Pi Phis, there are touches of Pi Beta Phi history and sisterhood throughout. You're invited to take a look inside these spaces and see how Pi Phi pride is displayed in facilities across North America.



THE  
BALLANTYNE  
FILE

THE  
RUGBY  
FILE

*M. L. Keller*  
*Grand Pres.*  
LETTERS

LETTERS

*Pi Beta Phi.*  
*May L. Keller*  
*Grand Pres.*

FROM

FROM

*Jan 8 1908*

TO

TO

*Jan. 1st 1909*

W. M. BALLANTYNE & SONS,  
428 Seventh St., N. W.,  
WASHINGTON, D. C.

FOR SALE BY  
ALL STATIONERS

## Pennsylvania Zeta

This year, Pennsylvania Zeta's Chapter House Corporation (CHC) had the chapter's original 1975 charter framed in wine and silver blue. This wonderful and important piece of the chapter's history got a makeover just in time for Founders' Day. It was one of the first things the CHC completed to kick off some redecorating projects the chapter is currently undergoing.



## Maine Alpha

Maine Alpha has a chapter room on campus, and this spring the CHC donated wine-colored, custom-built storage closets to help decorate the room and to make storing important items from the archives more convenient. All the composites not hanging on the walls were moved into the unit as well as all of the chapter's histories. The unit is easily accessible and a more organized way for Maine Alpha sisters to look through all the chapter's old artifacts and enjoy Maine Alpha's heritage.

## Indiana Beta

Indiana Beta ANN WELKE VIEL serves on Indiana Beta's CHC. The house dedicated a wing to her mother, Indiana Beta BETTY BURNETT WELKE, in



1993 in honor of her work on Indiana Beta's CHC, most notably for her role as CHC Chairman. The dedication was a complete surprise for Betty, because she did not realize how appreciative the entire CHC was to her at that time. The Welke



Wing has continued to hold a deep meaning to the women living in the chapter house. Above the entrance of the wing hangs this plaque, which has Betty's years of service on CHC, 1949–1993, and her

years of service as Chairman, 1952–1984. Also hanging is a picture of Betty during her years working with Indiana Beta.



## Indiana Delta

These stained glass windows are at the Indiana Delta Chapter house at Purdue University. The arrow windows were donated by the 1949 pledge class, the angel stained glass window was donated by the 1955 pledge class and the carnation window was donated by the 1975 pledge class.



## Iowa Gamma

One cherished piece of décor in the Iowa Gamma Chapter house is the photograph of Catt Hall at Iowa State University (ISU). The photo was taken in 1995, right after renovations to the historic building and its dedication to CARRIE CHAPMAN CATT, Iowa Gamma. The photo illustrates Carrie, modeled by ISU Theatre professor and stage director JANE COX, who is also an Iowa Gamma. Jane has worked at ISU for more than 20 years and has been involved with more than 250 theater productions. She has spent much of her life teaching and telling the story of Carrie, including writing a one-woman play called “The Yellow Rose of Suffrage.” Other women in the background of the photo were members of the Iowa Gamma Chapter at that time.



## Illinois Theta

Illinois Theta has a “Pi Beta Phi Brides” photo album. It is filled with photos of Pi Phis who married either during or after school in the 1950s. There are many beautiful brides in that scrapbook, and the chapter members love looking at the old photos.

The chapter also has a lighted arrow hanging in the house. The antique arrow has been in the chapter since Illinois Theta first moved into the house at 1004 North Institute Place.



## West Virginia Alpha

This arrow originally hung on the front of the West Virginia Alpha Chapter house; it was put up shortly after the house was built in 1901.

On the back of the arrow are the names of the chapter’s founding members. After having it almost stolen a few times, the chapter moved the arrow inside for safekeeping. It now resides in a bedroom on the third floor called “Arrow.”

West Virginia Alpha also has a picture of the chapter’s founding members taken in 1918. It hangs in the chapter’s foyer and is one of the first things seen when walking into the house. The chapter considers the photograph its first composite.

The chapter also displays its original charter, given to West Virginia Alpha at the 1918 Convention. It hangs in the chapter’s dining room and reminds the women of the hard work and dedication of those who came before them.



## Oklahoma Beta

Memories of early Oklahoma Beta members and their proud Pi Beta Phi spirit can be seen on display at the Oklahoma Beta Chapter house at 324 South Cleveland. Wine-colored wool blazers, worn by Oklahoma Betas in the 1920s, are the focal point of the chapter's all-purpose room. The blazers bear the Pi Beta Phi crest on the pocket and are mounted on silver blue. They were donated by Oklahoma Betas FRANCES JENKINS ESCUE and PAULA POWELL HOYT.



## D.C. Alpha

D.C. Alpha owns some of its founding members' badges. The D.C. Alpha Chapter was the first women's fraternity on



The George Washington (GW) University's campus, chartered in 1889. When the chapter was re-chartered in 2007, D.C. Alpha alumnae donated their badges along with handwritten letters about their life at GW, which are now displayed in the chapter's dining room. D.C. Alpha JEAN MAXWELL STRINGHAM wrote about being sisters with D.C. Alpha MARGARET TRUMAN DANIEL, daughter of U.S. President Harry Truman: "Margaret invited the entire chapter to the White House for dinner and a movie," Jean wrote. "Wonderful experience."

## Oregon Gamma

This armoire was originally owned by founder NANCY BLACK WALLACE and is now located in the Oregon Gamma Chapter's formal living room. The armoire is believed to be one from a set of three, and the other two pieces are thought to be located in other chapter houses throughout the country. The chapter has this piece of furniture because Nancy moved to Salem, Oregon, later in life. The Oregon Gamma women always point out the armoire during house tours because they feel fortunate to have an antique from a Pi Beta Phi founder.



## Vermont Beta

The Vermont Beta Chapter proudly displays a photo of First Lady GRACE GOODHUE COOLIDGE, Vermont Beta, when she hosted the Pi Phis at the White House during the 1924 Eastern Conference. Pictured with the Pi Phis is artist Howard Chandler Christy, who painted Grace's portrait, which now hangs in the China Room at the White House. Vermont Beta has had this photo in the chapter house for more than 50 years. The chapter



also displays a photo of the Vermont Beta founders, taken in 1898. GRACE GOODHUE COOLIDGE, future First Lady, is seated fourth from the left.

# Remember

By: FRAN DESIMONE BECQUE, New York Alpha  
Fraternity Archivist and Historian

## The Kansas Alpha Chapter House

Kansas Alpha at the University of Kansas is one of Pi Phi's oldest chapters. The chapter published the first editions of *The Arrow* and is also known for hosting the first Cookie Shine. The history of Kansas Alpha's Chapter house is also a fascinating story.

In 1902, Kansas Alpha members first lived together in a home belonging to chapter alumnae HELEN SUTCLIFF and JENNIE SUTCLIFF. The chapter required all out of town members to reside there. A house fund was established to purchase furniture and carpets. This ended in 1906, when the Sutcliffs moved to California.

With \$100 saved, Kansas Alpha asked alumnae to build a chapter house. A lot at 1246 Oread was \$800, so an alumna loaned the chapter funds for the land. Four Kansas Alpha alumnae signed the loan note, and "The Kansas Association of Pi Beta Phi" was formed. A constitution dated June 1, 1906, set dues at \$1 per year. Fundraising to pay back the loan began with personal letters, and by summer's end, the \$800 for the land was repaid in full.

However, all was not smooth sailing for Kansas Alpha. An early account stated, "It is surprising to remember, though, how much opposition and even ridicule we encountered. Older alumnae scoffed at the idea of our being able to finance and manage a chapter house of our own. But the courage and enthusiasm of the active chapter never faltered. They did everything in their fervor to help. They gave what they could outright, they worked all summer getting pledges and doing actual labor at home in turn for cash, they did without clothes and other things, they gave entertainments, all for the cause."

For the 1906–07 year, while fundraising for the building continued, the chapter rented a home on Louisiana Street. More than \$2,000 was in the bank, but no one would loan the women the remaining \$5,500 they needed to build the house. Finally, an agent advanced \$3,000 on a first mortgage and an alumna lent \$2,500 on a second mortgage.

The first Kansas Alpha Chapter house was ready in Fall 1907. There were 13 rooms and two baths; a basement room was finished later. It was the first women's fraternity house on campus. Eight years later, the house was paid for,



Missouri Alpha JANICE LYON YATES donated this watercolor of the Kansas Alpha Chapter house at 1246 Mississippi to the Pi Beta Phi archives. Jan remembers visiting the house during her years at Missouri Alpha.

and plans were under way to enlarge it. But in 1915, the Kansas Association of Pi Beta Phi seized the opportunity to sell the house.

With the profit of the sale, two lots were purchased at 1246 Mississippi. A native stone and half-timbered stucco home, costing \$20,000, was built. The women only had to borrow half the amount and paid back the debt in only a few short years. With extra funds, in part because "The Kansas Association" dues were raised to \$25 per share, the chapter built an addition in 1928.

By the 1950s, the chapter had again outgrown the house. Because of city parking regulations, Kansas Alpha could not simply build another addition, so the women began searching for a different lot. After much debate, ground was finally broken in December 1961 for the present chapter house at 1612 15th Street. The chapter moved into the house only a short time later, in October 1962.

The Kansas Alphas made Pi Phi history when they built their first chapter house in 1907. The location has changed over the years, but the house stands as a testament to the loyal alumnae who helped build the wonderful home. ↗



## Coming Soon ...

Pi Beta Phi is excited to colonize at the University of Tampa this coming fall.

### The Florida Zeta Chapter at the University of Tampa

Located in the heart of downtown Tampa, the University of Tampa attracts students, faculty and staff from around the world, and provides a historical and cultural setting for learning. This medium-sized, private university, which was founded in 1931, enrolls 6,900 undergraduate students, 56 percent of which are female.

The University of Tampa is a developing and competitive University with a fraternity and sorority community that is expanding to match the campus growth. The Greek community currently has 21 organizations across five councils, including the Interfraternity Council, National Multicultural Greek Council, National Interfraternity Music Council, National Pan-Hellenic Council and National Panhellenic Conference.

After submitting materials to the University of Tampa's Extension Committee and offering a formal presentation to the University's Panhellenic community, Pi Beta Phi was invited to colonize in the fall of 2013. Pi Phi will join five National Panhellenic Conference groups: Alpha Chi Omega, Delta Gamma, Delta Zeta, Kappa Alpha Theta and Sigma Delta Tau.

"The Extension Committee, University administration and Panhellenic Community were thoroughly impressed with the Pi Phi extension team and values of the organization," said Brent Grunig, Coordinator of Fraternity and Sorority Life at the University of Tampa. "We are truly excited to begin a collaborative partnership to ensure the success of the extension effort this fall and look forward to planning the details in the coming weeks."



## *Pi Beta Phi Welcomes Illinois Kappa*

“My time in Pi Beta Phi has been filled with laughter, learning and growth. I have not been this happy, as I am right now, since I arrived at the University of Chicago, and it all is because I joined Pi Phi. This chapter is the best decision I have made in college. I have come out of my shell and met new friends because of this Fraternity. I can’t wait to give back to Pi Phi by being a big sis and helping our chapter grow.” — Illinois Kappa NIKKI ROQUE



Top: Illinois Kappa New Members enjoyed taking pictures with a life-size Pi Beta Phi frame during Bid Day. From left, HANNA HUANG, NIKKI ROQUE and VALERIE TATE.

Bottom: From left, Illinois Kappas ELISA EPSTEIN, ANI MARTY and KELSEY WHEELER celebrate during Bid Day.

Pi Beta Phi is excited to welcome the Illinois Kappa Chapter at the University of Chicago. Colonizing efforts began this past fall with several open-house events, during which the University of Chicago women could get to know Pi Beta Phi better. Though there was much excitement on campus, Pi Beta Phi postponed colonizing recruitment for the winter semester to allow for more women to sign up for recruitment. The University of Chicago is a highly student-run campus and without the enthusiasm and drive shown by a core group of women, the Illinois Kappa Chapter would not be a reality.

From February 8–10, 2013, colonizing recruitment was held on the University of Chicago campus. In keeping with Pi Beta Phi’s literacy focus, the weekend kicked off with a literacy-themed open house. Pi Phi volunteers, local alumnae and the University of Chicago women enjoyed conversations about the Fraternity, including discussion around our six core values and how important these values are to Pi Phis of all ages.

The next day, following preference events, 55 women were pledged into the Illinois Kappa New Member class. To celebrate, the women received Bid Day packs from Pi Phi Express, complete with silver blue “You Had Me at Halo” T-shirts, and enjoyed taking photos with a life-size Pi Beta Phi photo frame.

Throughout the winter, the Illinois Kappa New Members immersed themselves into Pi Beta Phi and also into the University of Chicago fraternity and sorority community. The women participated in several philanthropy events, including Sigma Chi’s “Derby Days,” which brought the whole chapter together to support the Huntsman Cancer Foundation. As part of “Derby Days,” the women participated in penny wars, attended a restaurant night, played in a trivia night and won third place in a dance competition.

“Derby Days’ was the first time we were able to introduce ourselves to the UChicago Greek community, and we had a great time doing it,” said Illinois Kappa charter member CATHERINE ALVAREZ-MCCURDY. “We placed in several events — the week was a great boost to our morale and drew our chapter closer to one another.”

After much preparation and anticipation, installation weekend was held April 19–21, 2013. The weekend-long celebration began Friday night with a Cookie Shine alongside local alumnae, current and past Grand Council members, Pi Phi volunteers and Headquarters staff. Members of other University of Chicago fraternities and sororities also attended the Cookie Shine to welcome the Illinois Kappa Chapter.

“My favorite Pi Phi event so far has been the Cookie Shine,” said Illinois Kappa charter member LEIGH RYFFEL. “Seeing so many members of other Greek organizations from campus show up to support us, along with alumnae and family members, was really motivating and inspiring.”

On Saturday, the weekend’s events continued with Grand President MARY LOY TATUM, Oklahoma Beta, initiating 54 women into Pi Beta Phi, including four alumnae initiates. That evening, Illinois Kappa charter members gathered with their families and friends to celebrate their official induction as the Illinois Kappa Chapter.

Installation banquet Toastmistress ERIN CORREA, Illinois Kappa alumna initiate, shared why she wanted to be a Pi Phi, bringing tears to many in the room. Erin previously served as the Executive Director for The Leadership Institute — Women with Purpose® and has been a workshop facilitator and keynote speaker at many Pi Beta Phi events. And as fate would have it, some of Erin’s closet friends, as well as her sisters-in-law, are Pi Phis.

“With all that has been happening in our world lately, from the shooting at Sandy Hook Elementary to the bombing at the Boston Marathon, the world needs women like us: women who live with integrity, honor and respect,” Erin said. “Women who understand the value of a lifelong commitment and who value and promote sincere friendship, readily giving it to others, just as Pi Phi has given us.”

The banquet ended when Grand President MARY LOY TATUM, Oklahoma Beta, performed the Installation Ceremony making Illinois Kappa Pi Beta Phi’s 192nd collegiate chapter.

“The installation banquet made me feel very special because I began to look at my sisters differently, knowing we shared something unique: Pi Beta Phi,” said Illinois Kappa charter member CATHERINE ALVAREZ-MCCURDY.

The next chapter in Illinois Kappa’s story is just beginning. Chapter President RAYNA GUO expressed her excitement for the newest members of Pi Phi.

“I hope to help Illinois Kappa create its own unique voice in the UChicago Greek community and love, share and promote Pi Phi’s core values to our sisters and to others outside the Fraternity,” Rayna said. “I’m excited to embark on this journey and grow with these passionate and beautiful women who each have their own unique interests and aspirations, who have high standards for themselves and those around them, and who are dedicated to, and united by, the three letters: Pi Beta Phi.” ↪



Top: Illinois Kappa charter members gather for a photo at the installation banquet on Saturday, April 20, 2013.

Bottom: Illinois Kappas HANNA HUANG, GINA LI and JACQUELINE WANG look through a Pi Phi scrapbook following the chapter’s installation banquet.

## Read > Lead > Achieve®: 2011–2013 Milestones

During the last two years, Pi Phis hosted literacy service events and encouraged reading in their communities through Read. Lead. Achieve. As the 2011–2013 biennium ends, the Fraternity takes a closer look at our literacy-related milestones.

<p><b>Promoting the Importance of Literacy</b></p> <ul style="list-style-type: none"> <li>• Destination: Recruitment resource developed for chapters to support philanthropy round of recruitment.</li> <li>• Chapters and alumnae organizations received a Read &gt; Lead &gt; Achieve promotional pack including materials for service events and member education.</li> <li>• Read &gt; Lead &gt; Achieve Facebook page launched to encourage members to share their literacy service events.</li> <li>• The Fraternity proudly celebrated 100 years of literacy service in November 2012 with the dedication of Pi Beta Phi Centennial Plaza in Gatlinburg, Tennessee.</li> <li>• To support Pi Beta Phi’s literacy work, a Literacy Initiatives Coordinator joined the Headquarters staff.</li> </ul>	<p><b>First Book®</b></p> <ul style="list-style-type: none"> <li>• CAR Connect launched: when a CAR site registers with First Book, they receive a \$200 First Book Marketplace credit. If the CAR site refers a peer program, they earn an additional \$100 to spend.</li> <li>• Five thousand copies of “Remember the Ladies: 100 Great American Women” children’s books were made available in the First Book Marketplace. Seven hundred of those were donated to Pi Beta Phi Elementary School in Gatlinburg.</li> <li>• More than 3,000 books were donated to local recipient groups in Kansas City, Atlanta and Los Angeles during the Fraternity’s regional leadership events.</li> </ul>
<p><b>Fraternity Day of Service</b></p> <ul style="list-style-type: none"> <li>• Pi Phis organized or participated in events to encourage reading and improve literacy in their communities.</li> <li>• Chapters and alumnae organizations nominated First Book recipient groups to receive \$100 in First Book Marketplace credits. Pi Phis across North America nominated 223 recipient groups, giving more than 9,300 new books to children in need.</li> <li>• Each chapter and alumnae organization received 50 bookmarks, promoting Pi Phi’s literacy initiatives, to hand out during Fraternity Day of Service events.</li> </ul>	<p><b>Champions are Readers®</b></p> <ul style="list-style-type: none"> <li>• Committed created to: develop new reading enrichment activities aligned with national standards for education; evaluate program costs; include multiple grade levels; evaluate program incentives; and develop additional resources for Pi Phi chapters and alumnae organizations.</li> <li>• The updated CAR program launched at the 2013 Convention and materials are available this summer.</li> <li>• Pi Beta Phi Foundation approved a \$40,000 grant, making the new CAR a free program. Chapters and alumnae organizations will only be responsible for shipping and handling costs of the CAR materials.</li> </ul>

<p><b>The Literacy Fund at Pi Beta Phi Foundation</b></p>		
<p>\$30,000 to First Book for new books in honor of extension efforts and special projects.</p>	<p>\$25,000 for the backpack build at the 2013 Convention to benefit 1,000 children in need in the San Diego area.</p>	<p>\$55,000 for CAR materials, books and pilot testing.</p>
<p>\$10,000 to Pi Beta Phi Elementary School to purchase new books so their library meets core curriculum standards.</p>	<p>\$14,200 for Arrow in the Arctic to supply new books for libraries, family literacy kits, story-time kits and staff support.</p>	<p>\$307 for staff professional development at The Ohio State University’s Struggling Readers Workshop.</p>

# Revised Champions are Readers Program Launched

Champions are Readers (CAR), Pi Beta Phi's reading enrichment program, recently underwent some exciting updates. Through the new program, Pi Phis will continue to impact the lives of students by providing lifelong reading skills.

In 2003, Pi Beta Phi introduced CAR as a reading program specifically for third-grade elementary students. The program was designed to supplement reading activities already being provided in schools and after-school programs, while offering Pi Phis a turnkey reading program to implement in their communities. Since its launch, more than 30,000 students have participated in the CAR program across North America.

In 2012, a committee of Pi Beta Phi volunteers, Headquarters staff, teachers and educators evaluated the CAR program. Revisions were made based on feedback from Pi Phi chapter and alumnae organization members who said the program needed to incorporate more proven effective reading strategies, while including additional grade levels. Updates were also needed to ensure the program aligned with national standards for education.

The new CAR program offers the flexibility to serve students in prekindergarten through third grade and offers the opportunity for differentiation amongst students. When ordering CAR materials, chapters and alumnae organizations will be asked to indicate the grade level(s) and number of students participating in the program, and the new CAR packs will include materials for students according to the grade level indicated on the order. Updated CAR packs, available later this summer, will include:

- **Implementation Folder:** This folder contains all pre-K through third-grade activities with correlating directions. Pi Phis should work with teachers to decide which activities are best for individual students or the entire class.
- **Student folders:** Each student will receive a portfolio folder to be kept at school until the end of the program.
- **Books:** A brand-new book is provided for each student. Chapters and alumnae organizations can work with teachers to select these books according to students' reading levels and interests.
- **Certificate of Achievement:** At the end of the program, each student will receive a Certificate of Achievement to recognize his or her work.



From left, Ohio Betas KRISTEN DREVNA, ELLEN SARIDAKIS and KRISTIN GUNN read to students in Columbus, Ohio.

- **Parent Letter and Reading Tips Brochure:** Included in the CAR pack is a letter to parents explaining the program. Also included is a brochure with helpful tips outlining how parents can help their children succeed as readers. These parent resources are available in English and Spanish.

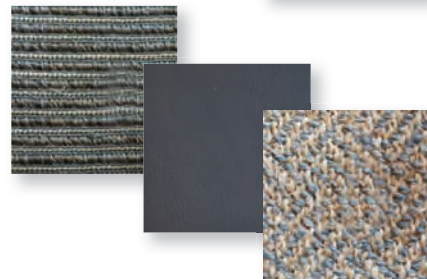
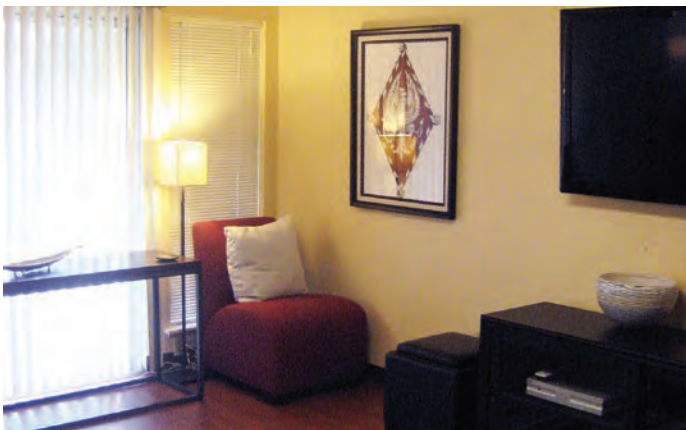
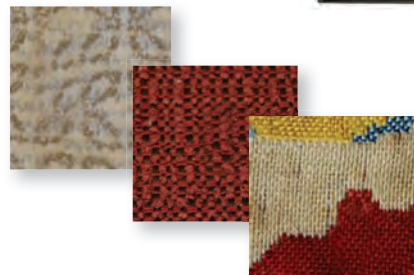
We hope chapters and alumnae organizations will enjoy the flexibility of the new program and its focus on providing a mentoring relationship between the volunteers and the students, while focusing on reading strategies for learning. For many students, working one-on-one with an adult on his or her reading comprehension is one of the best ways to improve reading skills and encourage lifelong learning.

For additional resources, and to view the complete set of new CAR materials, email [literacy@pibetaphi.org](mailto:literacy@pibetaphi.org) or visit [www.pibetaphi.org/championsarereaders](http://www.pibetaphi.org/championsarereaders). ↪

Thanks to a grant from Pi Beta Phi Foundation, all materials for the new CAR program, including folders, activities, certificates and books, are FREE! It doesn't matter if the order is for 10 or 100 students, chapters and alumnae organizations will only be responsible for shipping and handling costs.

## North Carolina Beta's New Look

North Carolina Beta's suite at Duke University was in need of a renovation before fall recruitment in 2012. The chapter is managed by the Fraternity Housing Corporation (FHC); therefore, FHC hired an interior designer who incorporated hints of Pi Beta Phi colors throughout the space, including paint, furniture, fabrics, artwork and lamps.



# Greek Village Construction at Virginia Eta

The Virginia Eta Chapter had the unique opportunity to become part of a Greek Village at the University of Richmond. It's one of seven cottages used by sororities on campus. Although chapter members are not housed in the facility, the cottage is designed to act as a common space to hold weekly chapter meetings and recruitment activities.



## Collegiate Spotlight

First-year students at Massachusetts Institute of Technology (MIT) are faced with a rude awakening: everyone in their class is just as smart, if not smarter, than they are. One would think this environment fosters competition and pressure among students. However, Massachusetts Gamma, LIZZ ALBANY, said MIT does not. She shared her personal experience through the University's prestigious and groundbreaking TIMtalks program.

TIMtalks are modeled after the inspirational talks given at Technology Entertainment Design (TED) Conferences that have gone viral on social media and throughout the Internet. TED Talks are devoted to ideas worth spreading, so MIT thought it clever to create something similar, TIMtalks, for students to showcase their ideas — successful or otherwise. In addition to being MIT backwards, the name stands for “think, inspire, motivate.” The purpose of the talks is for students to reflect on what they have learned at MIT and share that with fellow students.

Lizz was encouraged to apply to give a TIMtalk by her roommate and Massachusetts Gamma sister, MAGGIE LLOYD. Maggie knew the hardships Lizz had gone through during her undergraduate career and thought other students could benefit from hearing her story. Lizz applied and was accepted to give her talk in the fall of 2012. Though her fear of public speaking is ever present, her love of MIT gave her the courage to go through with her talk.

“MIT students are used to being the best of the best, so when you get to school, it's scary to think everyone here is just as good, if not better than you,” Lizz said. “It's a huge life lesson some people, like me, come to learn the hard way.”

Lizz joined Pi Beta Phi during her “second” sophomore year. She contracted the swine flu at the beginning of her sophomore year and had to take the entire school year off to battle her illness. When she returned, she found a support system in Pi Beta Phi.

“I was looking for a place where I could walk down the stairs in sweatpants each morning and no one would care,” Lizz said. “These girls have embraced me for who I am.” She found this acceptance not only in Pi Phi but throughout MIT. Students didn't want to step on each other to reach the top; they helped each other get through their classes.

But it wasn't the classroom element that inspired Lizz to give a TIMtalk. It was the other degree that students at MIT



Massachusetts Gamma LIZZ ALBANY (left) spoke at MIT's prestigious TIMtalks about the life lessons she's learned while in college. Lizz is pictured with her Pi Phi sister SIOBHAN RIGBY (right).

graduate with, a degree in life lessons. “As amazing as it is to graduate from MIT with a highly sought-after degree, it doesn't represent the lesson we learn here: that we can fail and pick ourselves up again,” Lizz said. “There's no real recognition for the life lessons we learn in college, and I wanted to address that.”

Because of her talk, *Business Insider* named Lizz one of the 14 most impressive students at MIT. This distinction also honored her academic accomplishments, including the research she conducts in the Early Childhood Cognition Lab, and also her widespread involvement on campus.

Lizz has felt very thankful to Pi Beta Phi throughout her time at MIT. Pi Phi has helped her break down some personal barriers and conquer the nerves that prevented her from sharing her “first” sophomore year hardships.

“Some compare the MIT experience to trying to drink from a fire hose, because you get way more than you bargain for,” Lizz said. “It's absolutely true, but it doesn't matter how hard it was or how many tears I shed, this is where I fit in. I would do it all over again in a heartbeat.”



## ALABAMA

The Alabama Gamma Chapter met the current Miss America, Alabama Gamma MALLORY HAGAN, this spring when she returned to Auburn University. The chapter took photos with her in the Miss America crown as well as her Pi Phi badge. Mallory shared her Miss America experiences and reminisced with the women about her favorite Auburn memories.



## CALIFORNIA

The sisters of California Zeta at the University of California, Santa Barbara, participate in the Champions are Readers (CAR) program each year. This year, the women continued the friendships they made with their third-graders after CAR ended by becoming pen pals. Pictured is California Zeta EMILY COSTLOW.



## CALIFORNIA

Through the CAR program, California Nu sisters have tutored third-grade students in reading and also hosted book drives for schools in Westchester, California. The Loyola Marymount University Pi Phis love the opportunity to give back to their community through literacy service. From left, California Nus MEGAN MAHONEY and MEREDITH ALLENDORPH.



## MISSISSIPPI

Pi Phis at Mississippi State University raised more than \$12,000 for Armstrong Middle School through the Laura Carson Foundation with their “Pi Phi Pasta Night” fundraiser. The foundation buys textbooks and supplies for local schools, and it was named in honor of Laura Carson, a young girl in Starkville, Mississippi, who lost her life in a tragic accident. The Mississippi Gammas enjoy supporting this local philanthropy and its support of education.



## MISSOURI

Missouri Beta Pi Phis had the unique opportunity to showcase their chapter suite to alumnae during Washington University in St. Louis’ alumni weekend. Alumnae toured the suite, looked through scrapbooks and shared stories. The collegians discovered many traditions the alumnae practiced are still in use today, illustrating Pi Beta Phi truly is a lifelong commitment.



## OHIO

The Ohio Iota Chapter at the University of Dayton holds a fundraiser, “Pi Day Bake Sale,” on March 14 every year to support The Literacy Fund at Pi Beta Phi Foundation. From back left, Ohio Iotas MEREDITH DENNEY, ANNA DEVINE, LIBBY HARBAUGH, CAT SCHOLTES and LIV PINCIOTTI. From front left, Ohio Iotas CHELSEA MILLER and HAILEY THORN.



## OREGON

The Oregon Alpha Chapter at the University of Oregon celebrated Fraternity Day of Service by hosting a carnival for a local Boys and Girls Club. The children competed in a spelling bee, participated in a relay race and walked away owning a new book donated by the Pi Phis. The Cat in the Hat®, played by Oregon Alpha SALLY STENDER, also made a guest appearance.



## VERMONT

For Fraternity Day of Service this year, Vermont Beta Pi Phis at the University of Vermont spent time tutoring third-grade students. The students created their own versions of the classic story, “If You Give a Mouse a Cookie,” by Laura Numeroff. Pi Phis helped students write down their stories and draw illustrations. Pictured is Vermont Beta NORAH CARLOS.



## PENNSYLVANIA

This year, Pennsylvania Theta won first place in Villanova University’s Greek Week, including the tug-of-war, three-on-three basketball and obstacle course. The chapter also raised more than \$100 for North Light Community Center through its “Coin Wars.” The amount of enthusiasm and teamwork the Pi Phis displayed contributed to their success.



## VIRGINIA

In April, nine Pi Phis from the Washington & Lee University chorus had the chance to sing during the noon mass at St. Peter’s Basilica in Rome, Italy. Two Virginia Theta sisters traveled from their study abroad locations of Jerusalem and Edinburgh to watch their sisters perform, and one Pi Phi mother came from Georgia to show support as well.



# Pi Phi Lobbyists Garner New Sponsors for CHIA Bill

In April, Pi Phis joined 200 Greek students and leaders on Capitol Hill to discuss issues of importance to the Greek community with members of Congress and their staffs. The Pi Phi lobbying team helped gather support for the Collegiate Housing and Infrastructure Act (CHIA) and other important issues such as hazing prevention and proposed limits on charitable contributions.



FSPAC Logo



The Pi Phi lobbying team included collegians Ohio Beta ABIGAIL CAMP and Illinois Theta SARAH CZUFIN, Pi Beta Phi Fraternity and Sorority Political Action Committee (FSPAC) Representative SHEILA CONSAUL, Illinois Theta, and Fraternity Housing Corporation Executive Director, REBECCA RANDLOPH CULVER, Oklahoma Alpha.

Before visiting Capitol Hill, the women participated in workshops and training provided by the Fraternal Government Relations Coalition (FGRC), of which Pi Beta Phi is a member. The coalition represents the National Panhellenic Conference, the North-American Interfraternity Conference and the FSPAC to monitor and address legislative issues important to the fraternity world.

One of the main topics of conversation was CHIA, which — if passed — would allow contributions, made to maintain, improve or build fraternity and sorority housing, to be tax-deductible. Currently, Pi Phi chapters can only use tax-deductible donations for educational spaces, such as libraries or study facilities, not for living spaces like bathrooms or bedrooms.

Pi Phis also discussed with the legislators issues that could impact Greek organizations, such as proposed limits on all charitable deductions. President Obama has consistently asked Congress to reduce the value of charitable contributions for high-income taxpayers as a means of raising more revenue for the federal government. Such a change would almost certainly lead to a decrease in charitable contributions to fraternities and sororities, which would dramatically affect academic scholarships and leadership development programming.

“Before lobbying on Capitol Hill, I never realized the boundless opportunities that being Greek provides,” said Ohio Beta ABIGAIL CAMP. “While in Washington, D.C., though we were all representing our different organizations, we were also simultaneously a part of something much bigger. We had a common goal: to gain support for legislation that would not only protect the lives of our fellow Greeks but generations of students to come.”

This well-coordinated Greek lobbying day happens annually in the spring and is orchestrated through the pro bono work of Patton Boggs LLP.

For more information on Pi Phi’s government relations activities, visit [www.pibetaphi.org/governmentinitiatives](http://www.pibetaphi.org/governmentinitiatives).



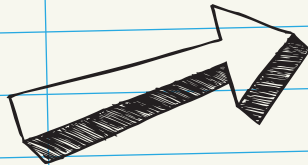
Top: In April, Pi Beta Phi’s lobbying team stopped on the steps of the Capitol to meet Pi Phis who work on the Hill.

Bottom: From left, Illinios Theta SARAH CZUFIN, Congressman Adam Kinzinger, Fraternity Housing Corporation Executive Director REBECCA CULVER RANDOLPH, Oklahoma Alpha, and Jeff Risser, Director of Finance/FHC Operations Director for Kappa Alpha Theta Fraternity.

# Pi Phi Alumnae Advisory Committees Celebrate

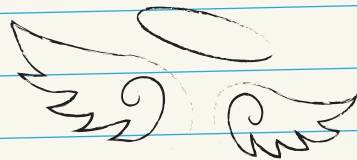
# 100 YEARS

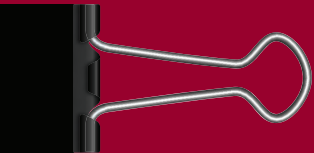
of 'MODELING the WAY'



Pi Phi chapters, regardless of size or history, are successful because alumnae graciously dedicate their time as Alumnae Advisory Committee (AAC) members. These women shape the next generation of Pi Phis and model what it means to be a lifelong committed member of Pi Beta Phi. This year, as the AAC program turns 100 years old, we celebrate the thousands of women who said "yes" and shaped our Fraternity through their service.

# ΠΒΦ





## How Did Pi Phi's AAC Program Begin?

Pi Phi was the first women's fraternity to recognize the value of using its alumnae to give guidance and counsel to active chapters. As early as 1908, it was recommended Pi Phi alumnae living near a chapter should have contact with the chapter at least once per month.

On June 21, 1913, Grand Council authorized an amendment to the Constitution and Statutes, providing the formation of Alumnae Advisory Committees (AAC). The amendment included provisions "that for each active chapter there shall be an advisory committee of five from the nearest chartered alumnae club" and that committee shall supervise in the areas of scholarship, house management, general social conditions, the publication of Fraternity news and the Panhellenic situation.

The June 1914 *Arrow* contained several reports on the concept. The Minneapolis and St. Paul, Minnesota, Alumnae Club reported: "Our chapter advisory committee has been interested and conscientious in solving the problems which have come to it. As the work of this committee becomes better defined and organized, it will be of great service to the Fraternity."

In 1922, Grand Vice President ANNA ROBINSON NICKERSON, Massachusetts Alpha, compiled a "Manual for the Use of Alumnae Advisory Committees." It proved to be of inestimable value. By the mid-1920s, AACs became required to meet with the chapter's Executive Council to review and approve the list of candidates eligible for initiation. By the 1930s, AACs were also named official counselors in the areas of recruitment and development of New Members.

Today, though AAC job titles and duties have evolved over the years, the duties of mentoring and guiding active members remain unchanged.

## Kansas Alpha

### **KATY IBSEN**

As a collegian, one particular AAC member stood out to me, as she was a leader in our community and on the University of Kansas campus: Texas Zeta JUDY LOCY WRIGHT. I knew she was well respected, and in my eyes, the epitome of what Pi Beta Phi was preparing me for. Whenever times became tough during my service on the chapter's Executive Council, Judy provided me with the tools to effectively and confidently work with my chapter and the University.

After I graduated and began my professional career, I was quick to make a call to Judy. I asked her how I could share all I received from Pi Beta Phi and apply it to my career and my community. Before I knew it, I was serving the United Way, nominated for a local leadership program and joining a young professionals network — all at her recommendation. Ten years later, our relationship has evolved into a special one, and I am so grateful for all her service to Pi Beta Phi and for being my mentor. Had it not been for her work on AAC, I would have missed the opportunity to fashion myself after such an accomplished Pi Phi.

## New Jersey Alpha

### **SARA KUSHMA**

When I began my term as Chapter President, I was unsure how I was going to lead my Executive Council and accomplish all the goals we had established. It is also important to note, at that same time, Virginia Theta JEN MANDEVILLE had just become our AAC Chair after recently moving to the area. We both had steep learning curves. But Jen and I grew into our roles together, learning exactly how to get things done effectively and efficiently. She was always available, by phone and email, to answer my constant questions. I know New Jersey Alpha would not have been able to accomplish everything that we have without her. She has helped our chapter reconnect with our Pi Phi heritage, and I know our chapter will continue to flourish under her leadership. All in all, she was truly amazing!

Illinois Iota

## LINDSEY LERNER

As an 18-year-old leaving home for the first time, I found the support group I felt I was lacking in Pi Phi. In my sophomore year, I was elected to my chapter's Executive Council and introduced to our AAC. Though these women were from different parts of the country and varied in age, they all had one thing in common:

their love of Pi Phi.

That love quickly transcended into a love for us. The women of AAC lent a helping hand, gave a supportive shoulder to cry on and even gave some tough love when needed.



It was this type of compassion that drove me to become involved with my local chapter, Illinois Epsilon, as an alumna. Working with the collegians brings me more joy than they probably will ever know, and I can only hope I have the same influence on them as my advisors had on me. Being on AAC is a selfless act, and it takes a special type of person to do the job. I want to say thank you to them for showing me what a true Pi Phi woman is and helping me become the person I am today.

North Carolina Alpha

## NATALIE MAYO DEAK

South Dakota Alpha AMY LORENZEN SOUTHERLAND was my AAC Chair, and she was always helpful, supportive and, most importantly, a true mentor. Amy taught me how to prioritize, how to communicate with people and how to be a good leader. She helped me deal with the unpleasantness of leading your friends and always held me accountable when I didn't do what I should, while also making me feel confident!

Today, I use the skills I learned from Amy in my role as AAC Chair for the Maryland Gamma Chapter. I try to be a strong leader like Amy. She taught me that being an AAC member is not just showing up once a month to make sure the chapter is not breaking rules, but is about sharing life skills, professional skills and positive energy with our sisters.

Ohio Eta

## LAURA CLOUGH REDMOND

I've seen the magic of Pi Beta Phi's AAC as both a collegian and an advisor. I had such a warm relationship with my advisor, Ohio Eta SUSIE WALTER CARGILE, when I served on my chapter's Executive Council. She was my coach and cheerleader. We would write letters back and forth after graduation. Now I'm on AAC myself, and it's the most rewarding volunteer work I've ever done, mostly because I love to give back to Pi Phi, but also because each year we get to meet a new group of bright, accomplished, poised young women. Many things have changed since I pledged Pi Phi back in 1989, but when I hear "Speed Thee My Arrow" or see that golden arrow pin pointing skyward, it is an absolute comfort to know the core experience of being a Pi Beta Phi remains the same.

Tennessee Gamma

## BETTY LOPEZ SMITHGALL



As a collegian, I got to know Maryland Beta DAWN SHEELER FORD, who was my AAC Chair at the time. She was classy, respectful and had a passion for Pi Beta Phi. I was impressed she gave her time to a group of challenging, sometimes rebellious, college students of the 1970s.

After graduation, I remembered how alumnae like Dawn gave back to Pi Phi and often thought I would like to return the favor. I tried to get involved several times as I moved around to different cities, but my schedule never allowed it. Finally, in 1994, my husband and I arrived in Bozeman, Montana, with a 2-year-old, not knowing a single person. Next thing I knew, I was helping out with AAC for the Montana Alpha Chapter.

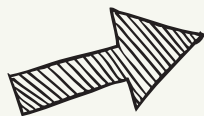
A few years ago, I was at a Pi Phi event and Dawn happened to be there also. I reintroduced myself and told her how much she had influenced me. I shared how she was one of the main reasons I reconnected with Pi Phi as an alumna and why I wanted to give back. I can't think of any other organization from college that continues to impact a person's life like Pi Phi has done for me. It is the lifetime experience at its best.

Ontario Alpha

## HELENA YEUNG

My AAC Chair, Ontario Alpha MONICA DIAZ-GRECO, has shown me what it means to be a Pi Phi. Working with Monica and seeing her dedication and passion for our chapter, and Pi Phi as a whole, I'm constantly amazed. She single-handedly recruited our chapter's AAC, which has grown from one person to almost 10. She helps out during every recruitment, even when she was nine months pregnant. And every Ontario Alpha knows Monica well, from New Members to seniors.

Something that has really stood out to me from my time working with Monica is that she keeps a box full of her Pi Phi memorabilia and memories. She was gifted the box from her Executive Council when she was Chapter President. She's kept almost everything from her Pi Phi career: brochures, gifts, cards, pictures and even nametags from convention! Seeing the box helped me understand Pi Phi is a lifelong commitment, one where your service isn't work but helping out your sisters.



Texas Delta

## LAUREN TATUM MATOCHA

About seven years ago, a Pi Phi sister of mine called me somewhat out of the blue. We caught up on old times and where we were now, and then she swooped in! I was getting a "call" to join my chapter's AAC. My friend appealed to all the things I wanted: to reconnect with college buddies, to have a leadership role and to help support my chapter. It was an easy yes. I served on AAC at Texas Delta for five years, connected with old friends, made some new ones and enjoyed a new Pi Phi experience. I think my AAC experience was awesome and very interesting. I do hope that others will step into an open AAC position near them to make a difference in their own lives, as well as support and develop the future leaders of Pi Phi.



## 'Pi Phi AACs: Celebrating 100 Years of Modeling the Way'

The 100th anniversary celebration continues online with the premiere of a new video about AACs! Pi Phis share their favorite AAC memories and how AAC members changed their lives. Watch the video online via the Fraternity's YouTube channel.

[www.youtube.com/pibetaphihq](http://www.youtube.com/pibetaphihq)



## Once a Pi Phi, Always a Pi Phi

By: CHANEL LACHAPPA, California Iota

In May 2005, while I was attending California State University, Chico, my chapter received devastating news: California Iota would be closing. As a younger member, I didn't fully understand the decision. What did the closure mean for me? Was I still a Pi Phi? Though lifelong membership may sound intimidating for most collegians, I wanted more time to enjoy all the great reasons I picked Pi Beta Phi.

After graduation, I moved to Portland, Oregon. I didn't know a soul, so I joined the local Pi Phi alumnae organization. At first, I thought I would be an outcast, because my chapter was no longer active, but I still gave it a shot. What I learned was quite different! The women were from all over and some had also come from closed chapters. They welcomed me to Portland and were a vital support group while I adjusted to living in a new city. The club also had many leadership opportunities I was able to take advantage of, and after a few roles I was elected to be President.

As President of the Portland Alumnae Club, I worked closely with the Lake Oswego-Dunthorpe, Oregon, Alumnae Club on a few events and met Oregon Alpha MAJA TANAKA BERGE. Maja is a remarkable Pi Phi and holds the essence of our values. I didn't know it at the time, but Maja would end up becoming a wonderful friend and an amazing mentor to me. When Maja moved into her role as an Alumnae Regional Director, she recommended to the Leadership and Nominating Committee that I join her team as the Membership Specialist. Wow! An International Officer, me? They still want me, even if my chapter closed? Maja assured me it was my individual leadership skills and values that were the considerations going forward.

Currently, as an International Officer for Pi Beta Phi, I serve at the regional level working with more than 40 alumnae organizations. Working on an Alumnae Regional Team has opened my eyes to all Pi Beta Phi has to offer its members, no matter the chapter. I love working with the alumnae and seeing their Pi Phi pride.

Last year, I had the opportunity to work on a support team for a chapter in need. Working on the team was bittersweet. My heart broke for the women in the chapter. I could completely relate as members of my chapter also



Though her chapter closed while she was in college, California Iota CHANEL LACHAPPA (left) reconnected with Pi Phi as an alumna. She met a wonderful friend and mentor, Oregon Alpha MAJA TANAKA BERGE (right).

made poor decisions, which came with consequences. As the alumna representative on the team, I was able to work with the collegiate women during their transition to Undergraduate Alumna Status (UAS). It was vital for the women to know even though the university no longer recognized their chapter, their membership with Pi Beta Phi remained. All Pi Phis should know that while collegiate life is four years, membership with the Fraternity is for life.

I know the last seven years of my life would have been very different if I hadn't reconnected with Pi Beta Phi after graduation. Thanks to Pi Phi, I have been able to work with my peers, advance my career skills and gain friends from all over the United States and Canada. I'm thankful every day for this gift. If you know a sister who has been through the closing of a chapter or has lost contact with Pi Beta Phi, it is my hope you will remind her that her lifelong membership always remains.

## Have You Ever Thought, 'I Want to be a Mentor'?

There may be a chapter in your area needing women to fill open spots on its Alumnae Advisory Committee or Chapter House Corporation. Join a volunteer team to help build a strong chapter and meet new sisters. Your personal and professional experiences could be the perfect fit. Email [volunteer@pibetaphi.org](mailto:volunteer@pibetaphi.org) or visit [www.pibetaphi.org/volunteernow](http://www.pibetaphi.org/volunteernow).

### The following chapters need Alumnae Advisory Committee members

AB Alpha, University of Alberta	IL Epsilon, Northwestern University*	OH Alpha, Ohio University
AL Alpha, Birmingham-Southern College*	IL Theta, Bradley University	OH Beta, The Ohio State University
AL Gamma, Auburn University	IL Zeta, University of Illinois	OH Eta, Denison University
AZ Alpha, University of Arizona*	IN Alpha, Franklin College	OH Kappa, University of Cincinnati
AZ Beta, Arizona State University*	IN Beta, Indiana University	OH Theta, Bowling Green State University*
AZ Gamma, Northern Arizona University	IN Delta, Purdue University	OH Zeta, Miami University*
CA Alpha, Stanford University	IN Epsilon, DePauw University	ON Beta, University of Western Ontario*
CA Beta, University of California, Berkeley	IN Gamma, Butler University	ON Gamma, University of Guelph*
CA Delta, University of California, Los Angeles	IN Theta, Valparaiso University	OR Alpha, University of Oregon
CA Epsilon, San Diego State University*	IN Zeta, Ball State University	OR Gamma, Willamette University
CA Eta, University of California, Irvine	KY Alpha, University of Louisville*	PA Eta Lafayette College*
CA Gamma, University of Southern California	KY Beta, University of Kentucky	PA Gamma, Dickinson College*
CA Kappa, University of California, San Diego*	KY Gamma, Eastern Kentucky University*	PA Kappa, Lehigh University
CA Lambda, University of California, Riverside*	LA Beta, Louisiana State University	PA Theta, Villanova University
CA Mu, Loyola Marymount University*	MA Gamma, Massachusetts Institute of Technology	PA Zeta, Washington & Jefferson College
CA Nu, Pepperdine University*	MD Gamma, Johns Hopkins University	TN Beta, Vanderbilt University
CA Theta, University of California, Davis	MI Alpha, Hillsdale College	TN Gamma, University of Tennessee
CA Zeta, University of California, Santa Barbara*	MI Beta, University of Michigan*	TX Delta, Texas Christian University
CO Alpha, University of Colorado	MI Epsilon, Western Michigan University	TX Gamma, Texas Tech University
CO Gamma, Colorado State University	MI Gamma, Michigan State University	UT Alpha, University of Utah
CO Delta, Colorado School of Mines*	MT Alpha, Montana State University*	VA Delta, Old Dominion University
CO Epsilon, University of Colorado, Colorado Springs	NC Delta, North Carolina State University	VA Epsilon, University of Virginia*
CT Beta, Yale University*	ND Alpha, University of North Dakota	VA Eta, University of Richmond
CT Gamma, Quinnipiac University	NJ Alpha, Princeton University	VA Gamma, College of William & Mary
FL Alpha, Stetson University*	NM Alpha, University of New Mexico	VA Zeta, Virginia Tech*
FL Delta, University of Florida*	NM Beta, New Mexico State University	VT Beta, University of Vermont*
FL Epsilon, University of Central Florida	NY Delta, Cornell University	WA Alpha, University of Washington
IA Zeta, University of Iowa	NY Epsilon, Rensselaer Polytechnic Institute	WA Beta, Washington State University
ID Alpha, University of Idaho	NY Eta, New York University	WA Gamma, University of Puget Sound
IL Alpha, Monmouth College	NV Alpha, University of Nevada	WI Alpha, University of Wisconsin
IL Beta-Delta, Knox College		WI Delta, Marquette University
IL Iota, Illinois State University		
IL Eta, Millikin University		

\* Indicates the chapter also needs CHC members.

### The following chapters only need Chapter House Corporation members

CT Alpha, University of Connecticut	OH Epsilon, University of Toledo	TN Delta, University of Memphis
MO Gamma, Drury University	ON Alpha, University of Toronto	VA Theta, Washington & Lee University
NC Alpha, University of North Carolina	SD Alpha, University of South Dakota	WV Alpha, West Virginia University

# IN HER WORDS



**ROBIN JONES SHIELDS**  
MISSOURI ALPHA

## IN A NUTSHELL ... TELL US ABOUT YOU

While in college, I put my name in a box to win a free flying lesson. As fate would have it, I won the lesson, which lit a spark of passion for aviation. Today, I am Captain on a Boeing 777 and fly to international destinations like Beijing, Tokyo, London and Buenos Aires. Over the last 28 years, I have also worked as a flight instructor, charter pilot and commuter airline pilot.

**PI PHI TAUGHT ME ...**  
*"To be a strong, self-confident woman."*

BEST ADVICE YOU'VE EVER RECEIVED ▶

## FAVORITE PI HI MEMORY

I used to take my Pi Phi sisters flying around the Mizzou campus to get practice hours and loved circling the Pi Phi house at 2,000 feet.

## WHY I LOVE MY JOB

Every flight is different, and the view from my office is the best.

## WHAT IS YOUR FAVORITE RAINY DAY ACTIVITY?

Cooking.

## FAVORITE WORKPLACE EXPRESSION

"Cleared for takeoff!"

## HOW DO YOU KNOW WHEN YOU'RE SUCCESSFUL?

Happiness + constant improvement + contribution = success.

## FAVORITE QUOTE

"Choose a job you love, and you will never have to work a day in your life."  
— Confucius

## ADVICE FOR UP-AND-COMING PROFESSIONAL WOMEN

Life is 10 percent what happens to you and 90 percent how you react to it.

Left Brained  Right Brained

Heels  Flats

iPhone  Blackberry

a.m. coffee  a.m. soda

Hours a week 40+  50+  60+

ALWAYS HAVE A PLAN B

## A Proud Parent Honors her Pi Phi Daughter

Fern Levitt is a mom, wife, volunteer and documentary filmmaker from Toronto. She is passionate about telling stories, and she's even more passionate about her family. Fern especially loves to tell the story of how her daughter, Ontario Beta FARAH ZIPURSKY, joined Pi Beta Phi.

"When Farah first asked my husband and me if she could go through recruitment, we weren't sure what to think, as fraternity and sorority life was completely foreign to us," Fern said. "But the more Farah talked about it, the more we could see how excited she was to join a Greek organization. Of course, we said yes."

In March 2012, Farah became a member of the Ontario Beta Chapter at the University of Western Ontario, where she is majoring in global studies. Farah quickly became active in the chapter, participating in sisterhood events, reading to kindergartners at a local grade school and working with a committee of sisters on the chapter's Policy and Standards Board.

"Farah has always been a good kid, but I can tell Pi Phi has given her so many opportunities to grow and flourish," Fern said. "She's made great friends, taken on new responsibilities and stayed active in the community."

This spring, Fern visited the Ontario Beta Chapter. She toured the chapter house and participated in a parents' brunch. "It was great to meet the women whom my daughter has become so close with," Fern said. "It's important to me Farah has a strong support system at school, and it's clear Pi Phi provides that in spades."

When Fern received a letter from Pi Beta Phi Foundation earlier this year asking if she wanted to make a donation in honor of Farah, she jumped at the chance.

"My contribution is my way of thanking Pi Phi for the friendships, leadership and service opportunities it has provided for Farah and her sisters," she said. "It's also a way for me to show Farah how extremely proud I am of her."

*A parent gift expresses love and an appreciation for the Pi Phi experience. Daughters are mailed a special card notifying them a gift was made in their honor. For gifts of \$135 or more, the daughter also receives a limited edition sterling silver Pi Phi charm. Each year, the Foundation receives more than \$80,000 from generous parents like Fern through its parent campaign.*



After seeing how much her daughter, Ontario Beta FARAH ZIPURSKY (right), had grown because of Pi Phi, mother Fern Levitt (left) made a gift in her daughter's honor through the Foundation's parent campaign.

# Supporting Literacy in the Arctic

The Literacy Fund recently provided new grants to Arrow in the Arctic, strengthening Pi Phi's philanthropic work in Canada and making a positive impact on literacy.

Pi Beta Phi's Canadian philanthropy, Arrow in the Arctic, is a Read > Lead > Achieve initiative supporting literacy in Canada's Northern library systems, including libraries in the Yukon, Northwest Territories and Nunavut. Illiteracy is high in these areas, and many children are often home-schooled because of extreme weather conditions and long distances to and from schools.

For these children and their families, libraries are much-needed community and educational centers. The Canadian government provides basic funding for these libraries, but contributions from Pi Beta Phi help strengthen the libraries' abilities to serve their communities and boost literacy rates. Pi Beta Phi Foundation is honored to serve as a channel through which chapters, alumnae organizations and individual members can support literacy efforts in the Arctic.

This past spring, the Foundation's Board of Trustees approved four new grants for Arrow in the Arctic. The new grants, which come from The Literacy Fund, total more than \$7,000. These funds positively impact reading and literacy programs, including:

- New books for Atlin Library in British Columbia.
- Family literacy kits for 10 libraries in the Northwest Territories public library system.
- Books for the permanent collection and staff support for a summer reading and writing program for the Laird Valley Literacy Society, in Watson Lake, Yukon.
- Children's story-time kits for the Friends of Whitehouse Public Library in Yukon.

"The libraries we serve are especially grateful for Arrow in the Arctic," said Canadian Philanthropies Committee Chairman MARILYN CLARK, Ontario Beta. "They appreciate our fundraising and our efforts to improve literacy in the far north."

More than \$14,000 has been granted to Arrow in the Arctic during the 2011–2013 biennium. For more information about The Literacy Fund or Arrow in the Arctic, visit [www.pibetaphifoundation.org](http://www.pibetaphifoundation.org). ↪

## Arrow in the Arctic Fast Facts

- 1** Arrow in the Arctic was established at the 1967 Convention to commemorate the centennials of Canada and Pi Beta Phi.
- 2** Pi Beta Phi was the first group in the National Panhellenic Conference to have its own Canadian philanthropy.
- 3** The Canadian Arctic includes five time zones, 18 official languages and the magnetic North Pole.
- 4** Arrow in the Arctic's support is vast, covering an area five times the state of Texas.
- 5** To date, donations of more than \$100,000 have supported Arrow in the Arctic.



## Alumnae Spotlight

Photographer KATIE JENKINS NORRIS, Texas Zeta, uses her camera to tell “Rudy” stories: ordinary people who face great obstacles. Her business, Fotolanthropy, combines pictures and film to share the inspiring stories of individuals facing the hardest times of their lives, from cancer to a special needs child to a soldier returning from war as a quadruple amputee.

Katie dreamt up Fotolanthropy during a 16-hour road trip with her husband. At the time, she had been working as a portrait photographer for several years. Though her work was fulfilling, she yearned to use her creative talents to help others. Katie just didn’t know how and explains she “kept the idea in my heart, tucked under a rug.”

One day, not long after her road trip, Katie received a phone call from a distraught mother. The woman’s eight-month-old son, James, had been diagnosed with brain cancer and she wanted to have family portraits taken before his chemotherapy started. In that moment, Fotolanthropy was born.

“My heart broke, I wanted to help this mom prepare to go through the worst time of her life,” Katie said. “I pulled the first filmmaker I knew and we filmed the story of baby James. It was a humbling experience to delve into such a sensitive time in someone’s life.”

James passed away only three weeks later. The Fotolanthropy photographs and videos helped share his fight against cancer with family and friends. The positive response was enormous. Katie realized, for many families, retelling an experience over and over again is exhausting. But Fotolanthropy could help share these stories for a family, providing support during a difficult time.

Katie’s family, friends and colleagues began to pass on inspiring stories they’d heard. From a child born with a life-altering birth defect to a family whose home had been destroyed by a tornado, the stories kept coming. Katie also set up a nomination form on her website.

“Every time I check my email in the morning, I have nominations from across the country,” Katie said. “It’s an amazing journey. Right when I think the world is going under, I’m constantly reminded of the incredible people who are supporting those who are hurting.”

While searching Facebook one afternoon, Katie came across a photo of Army Staff Sergeant Travis Mills, a quadruple



Texas Zeta KATIE JENKINS NORRIS (far left) founded Fotolanthropy to tell the inspiring, true stories of individuals like Army Staff Sergeant Travis Mills, a husband, father and quadruple amputee.

amputee who had recently returned from Afghanistan. Katie said she first noticed Travis’ huge smile, but then her jaw dropped when she looked closer and saw all four of his limbs were gone. She immediately called Travis and asked if he wanted to tell his story through Fotolanthropy.

“On the phone that day, Travis told me he would love to tell his story and asked if I could be there next week,” Katie said. “I said ‘yes!,’ called my team and booked plane tickets, though we only had \$100 in our bank account.”

Fotolanthropy premiered the trailer for “Travis: A Soldier’s Story” in April. The feature-length film, to be released later this year, tells Travis’ story and his unbelievable physical progress in just one year. It beautifully captures Travis’ daily fight to be a good father and good husband as he jump-starts his future.

“Some days I cry myself to sleep, as Fotolanthropy can be a dose of reality,” Katie said. “But our work is a wonderful way for people to be honored, for them to feel beautiful and to see their families happy together. Our families also look back and see how far they’ve come and how they chose not to lose hope. It’s truly inspiring for them, for me and for those on the outside looking in.”

## ARKANSAS

The Northeast Arkansas Alumnae Club gathered to celebrate Founders' Day this past April. The members used the time to honor their eight Golden Arrow members by surprising them with a Cookie Shine and performing the Order of the Golden Arrow Ceremony.



## CALIFORNIA

The Long Beach, California, Alumnae Club celebrated Chinese New Year with a festive Chinese dinner. The women wore red and enjoyed spending time together.



## BRITISH COLUMBIA

The Vancouver, British Columbia, Alumnae Club celebrated its 65th anniversary with a luncheon at the historical Hycroft House. Washington Alpha COURTNEY SOULE MITCHELL (left) and her sister, VIRGINIA SOULE HIETPAS, Washington Gamma (right), great-granddaughters of founder INEZ SMITH SOULE, attended the celebration.



## CALIFORNIA

Members of the La Jolla, California, Alumnae Club participated in storytelling and literacy workshops at "Reading Day" at The New Children's Museum of San Diego. From left, California Kappa LAURA JARMAN, First Book-San Diego Board Member and California Epsilon LYNNE LUCKEY ADAMS, Idaho Alpha BARBARA MELBOURN and Florida Alpha SUSAN DORAZ HUNIUI.



## CALIFORNIA

The South Coast, California, Alumnae Club dressed in pink and enjoyed front-row seats at a production of “Legally Blonde.” From left, California Etas KATIE MCCORMICK SHREVE and ILDIKO SOMOGYI ALLEN, California Gamma DEBBIE SATTLER CUNNINGHAM, California Delta ANN FORKEY, Utah Alpha DIANE GRAY HARDIE, California Delta KATHY MEFFERD SMITH and California Eta DONNA RAINS ROMERO.



## CONNECTICUT

In March, a group of Pi Phis ran the Sandy Hook Elementary School Memorial 5K in honor of Connecticut Alpha LAUREN ROUSSEAU, a Sandy Hook teacher who was killed in the tragic shooting. Connecticut Alphas KARI STEWART and MICHELLE FARELLA helped coordinate the runners, including making custom T-shirts with angel wings.



## COLORADO

The Aurora, Denver and Highlands Ranch, Colorado, Alumnae Clubs hosted a Founders’ Day brunch to honor Golden Arrows and hold the *Leading with Values*® seminar “Then and Now.” From left, Iowa Zeta JULIE BURKE SZLACHTA, Nebraska Gamma KRISTI FISHER, Oklahoma Alpha PHYLLIS RICHARDSON EURTON, South Dakota Alpha MARLYCE EIESLAND BUCH and Texas Beta MARION MADISON HARRISON.



## FLORIDA

One of the Naples, Florida, Alumnae Club’s popular interest groups is its “Angels’ Book Club.” The women recently met in the home of Michigan Gamma SANDRA GOVATOS KARAGANIS. The book club allows the women the chance to read books they normally wouldn’t pick and leads to discussions full of laughter.





## ILLINOIS

Members of the Glen Ellyn-Wheaton, Illinois, Alumnae Club proudly show off their custom-made “Pi Phi” Little Free Library, painted with arrows and angels. The Little Free Library is full of donated books for all ages, which are available on a take-a-book, leave-a-book honor system. From left, Iowa Zeta ANNE WHEATON WANZENBERG, Indiana Gamma CHELLE HUMAN MILLER, Illinois Zeta LAURIE MITCHELL GORNIK and Iowa Zeta DENA KANE HOWSER.



## NEBRASKA

Pi Phis from the Omaha, Nebraska, Alumnae Club attended “A Gathering of Greeks,” the Omaha Alumnae Panhellenic Association’s scholarship and awards brunch. From left, Iowa Gamma ANNE PAULE HALL, Nebraska Beta MARCIA LEWIS JONES, Texas Delta ALLISON SCHORR, Nebraska Betas LINDA OAKESON DOBRY and CATHERINE ORIGER HOHMAN, Nebraska Gamma MICAH WHITE, Nebraska Beta JOAN GRAVES HARTMAN, Nebraska Gamma ELIZABETH TOMETICH RUDDEN and Nebraska Beta JULIE RICHARDS.



## MINNESOTA

The Minneapolis Alumnae Club hosted a read-a-thon at a bookstore featuring local celebrities reading aloud from their favorite books. From back left, Wisconsin Alpha JESSICA MILES, Minnesota Alphas EMILY MITCHELL and WYNNE REECE, Iowa Zeta STACIE VERBRUGGE and Minnesota Alphas SARAH WALL and RACHEL KONOPACZ. From front left, Minnesota Alphas ROBIN TARDY, HAILEY DAHL, EMILY HAFFTEN and MAGGIE GLEASON.



## WASHINGTON

In December, the Yakima, Washington, Alumnae Club celebrated its goth anniversary. Club members enjoyed a catered dinner, held a Cookie Shine and shared treasured Pi Phi songs and memories at the home of Washington Beta JANE GILBERT PLATH. The group also honored Founder FANNY WHITENACK LIBBEY, who was a founding member of the club.



## *Honoring our Diamond Arrows — 75-Year Members*

Congratulations to the 505 women who became Diamond Arrows in 2013. The following women requested certificates in honor of their 75 years of membership in Pi Beta Phi.

HELEN SHARP ANDERSON  
Texas Alpha

NATALIE LYONS BARROW  
Louisiana Beta

MARIANNA KISTLER BEACH  
Kansas Beta

PATRICIA MCCARTHY BOETTCHER  
Iowa Zeta

MAE BETTY NELMS BRIDGERS  
Tennessee Alpha

ELISE CURRY BROWNELL  
North Carolina Beta

ELEANOR JACKSON BURLESON  
North Carolina Alpha

MARY JANE LANG CHILTON  
New York Gamma

ELEANOR POSTLE CLARIDGE  
Ohio Beta

MARGUERITE CLARK CODY  
New York Alpha

DOROTHY ALLEN COUTANT  
Illinois Eta

JEAN CLIFFORD CREE  
New York Gamma

BERTHA SOUTHWICK CROWTHER  
North Carolina Beta

JEAN MCMURRY CROWTHER  
Florida Alpha

BETH COLTON DUNCAN  
Minnesota Alpha

MONTREW GOETZ DUNHAM  
Indiana Gamma

THELMA BUGHER FISHER  
Indiana Delta

VIRGINIA HUHN GALLUP  
Minnesota Alpha

JEAN CHUBB HARDY  
Illinois Epsilon

VIRGINIA WHEELLOCK HENDERSON  
Iowa Beta

JOYCE LEDGERWOOD INGLE  
Washington Beta

JOAN LAUNSPACH KLENK  
Wisconsin Beta

ADEL PETERS LONGMORE  
Oregon Beta

VIRGINIA HOLT MCFARLAND  
Texas Beta

ADELE TRUEX MUSGRAVE  
Oklahoma Alpha

CAROLYN OVERHOLT NELSON  
Kansas Beta

BETTIE LU GAUGHAN ROGERS  
Arkansas Alpha

VIRGINIA SCHMITZ ROGERS  
Wisconsin Alpha

JANET LERCH RUSH  
Florida Beta

PEGGY BOYCE RYDER  
Indiana Delta

MAXINE MILLER SIFERS  
Kansas Alpha

JEAN JOHNSON SMITH  
Indiana Beta

ANNABELLE MCALPIN SPENCER  
Indiana Alpha

JANIS SIEKMEIER TIFFANY  
South Dakota Alpha

GENEVIEVE MUNSON TRIMBLE  
Louisiana Beta

ANN GAMBLE WALTERS  
Nevada Alpha

ELIZABETH ROBBINS WEAVER  
California Alpha

DINA BARKAN WHITNEY  
Indiana Gamma

ALICE M. MCFALL ZWANZIG  
New York Delta



Diamond Arrows VIRGINIA HOLT MCFARLAND, Texas Beta (left), and HELEN SHARP ANDERSON, Texas Alpha (right), were honored during the Houston Alumnae Club's Founders' Day celebration this past April.

REBEKAH SCHNURR CRANE

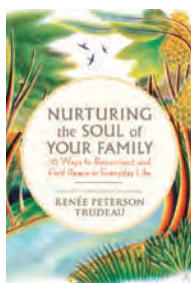
## PLAYING NICE

“Playing Nice,” a young adult novel by Ohio Alpha REBEKAH SCHNURR CRANE, follows Martina “Marty” Hart, a restless high schooler seeking freedom from her controlling mother and best frenemy, Sarah. When Lil Hatfield transfers schools, Marty gets her chance. Lil wears black and listens to angry punk music, but Marty sees something honest and real in her new friend. The novel reminds us how friendship is a lasting and influential bond.



## NURTURING THE SOUL OF YOUR FAMILY

RENEE PETERSON TRUDEAU



Texas Delta RENEE PETERSON TRUDEAU’s book, “Nurturing the Soul of Your Family,” helps parents find harmony amidst homework squabbles, relationship struggles, daily commutes and the challenges of everyday life. Based on the author’s popular women’s retreats and workshops, the book shares empowering and down-to-earth ideas for personal and spiritual renewal, like releasing old habits and enjoying unscheduled, free time with your family.

EDITH STODARD WEIGAND

## BLIND IRONY

In the historical novel “Blind Irony,” Kansas Alpha EDITH STODARD WEIGAND brings to life “Bleeding Kansas,” an important prelude to the Civil War. Between 1854 and 1861, the Territory of Kansas was a battleground as Northern abolitionists and pro-slavery Southerners vied for control. During the struggle, Native Americans were also stripped of their lands. Few people noticed the incongruity of these two movements and those who did were in double jeopardy.



## THE BATHROOM KEY

KIM MOORE PERELLI



Using humor and real-life stories, “The Bathroom Key: Put an End to Incontinence,” drives home the truth about this syndrome, which affects nearly one-third of all women. Written by a physical therapist and her cured patient, California Gamma KIM MOORE PERELLI, the book shatters the stigma attached to incontinence and provides a variety of tools and physical therapy techniques to help women stop medications, avoid surgery and regain their dignity.

## *How Pi Phis use our Values During Recruitment*

Every Pi Phi knows: recruitment is an exciting and busy time. Though recruitment schedules and traditions will vary from campus to campus, all Pi Beta Phi chapters seek to find New Members who will uphold the Fraternity's six core values in their daily lives. Talking about values may sound different than recruitment conversations of the past, but it's today's collegians who become tomorrow's lifelong committed members.

Like many nonprofit organizations and corporate companies, Pi Beta Phi has a set of core values guiding our work and our members. Pi Phi's values are: Integrity; Honor and Respect; Lifelong Commitment; Personal and Intellectual Growth; Philanthropic Service to Others; Sincere Friendship. The wording of our values has changed slightly over the last 150 years, but the meaning of these words comes directly from our 12 founders.

Pi Phi sets itself apart from other organizations by using our values in its day-to-day operations, like recruitment. We use our values to know what is right versus wrong, good versus bad. Our values guide how Pi Phis — from Grand Council to collegians — make decisions and solve problems. We ask ourselves, “does this event say ‘integrity’ or does this Facebook post say ‘honor and respect’”? By following our values, Pi Phi helps create responsible women who better society.

Clearly demonstrating our values during recruitment is especially important because recruitment is more competitive than in the past. More women are going to college and desire to be part of a Greek organization than ever before. These women want to join an organization with strong, clearly defined values.

Though times have changed, Pi Phi chapters always seek New Members who will uphold and live Pi Phi's core values in their daily lives. By establishing “the Pi Phi way,” we set expectations and are able to hold our members accountable when their actions or words are contrary to our values.

During recruitment, Pi Phi collegians discuss our core values in nearly every activity. The conversation begins during Spirit Week as collegians prepare through workshops, decorate the chapter house, suite or dorm and hold sisterhood events. Chapters also host *Leading with Values* seminars to identify how they live our Pi Phi values. For example, values play an important role in big and little sis relationships to helping sisters study for finals.

Values are also discussed during recruitment events. Instead of asking PNMs “what's your major” or “what dorm do you live in,” Pi Phi collegians talk about philanthropic service, like the chapter's Champions are Readers program at the



local elementary school. And the Pi Phi women ask a PNM what she values. If she is searching for lifelong sisterhood and opportunities to support her community, the PNM may be a good fit for Pi Beta Phi. Values also play an important role during membership selection. While membership selection is strictly confidential, we know our chapters use our Pi Phi values to guide the process.

Pi Phi alumnae use our values, too. According to the Fraternity's “Membership Satisfaction Survey,” which more than 2,000 alumnae completed in early 2011, two of our core values — Philanthropic Service to Others and Sincere Friendship — are the main reasons our alumnae stay connected to Pi Phi throughout their lives. Whether a Pi Phi is a new mom or an empty nester, she looks to her local Pi Phi alumnae organization to find sisterhood and participate in philanthropic activities.

Additionally, alumnae use our core values when completing a Recruitment Information Form (RIF) or a Legacy Introduction Form. By completing these forms, a Pi Phi alumna is confirming the PNM is a woman who holds herself to a higher standard, a woman who will live and uphold our core values. An alumna explains this on the RIF by including the PNM's achievements, academic or service-related, and explaining what qualities the PNM possesses.

Using values in all aspects of recruitment helps build a strong Pi Beta Phi for the future. Thank you for doing your part! To learn more, visit [www.pibetaphi.org/recruitment](http://www.pibetaphi.org/recruitment). ↪

# Reunions & Anniversaries

## CALIFORNIA

Twenty-three California Zetas from the University of California, Santa Barbara, met in Palm Springs, California, for an “Angels in the Sun” reunion. Events included a Cookie Shine, memorial service and singing of Pi Phi songs. The women, many who have known each other for nearly 50 years, still feel the same bond of sisterhood and enjoy spending time together just like their college days.



## KANSAS

The Kansas City, Missouri-Shawnee Mission, Kansas, Alumnae Club celebrated its 100 year anniversary with a Centennial Celebration and Founders’ Day event. There were 200 Pi Phis in attendance including collegians and alumnae as well as Pi Beta Phi Foundation representatives and Grand Council members. A historical display of awards and early newspaper accounts of club events highlighted the club’s accomplishments through the years. Grand President MARY LOY TATUM, Oklahoma Beta, brought greetings from the Fraternity and welcomed the new Golden Arrows.



TEXAS

In honor of their 50 years of membership in Pi Phi, members of the Texas Gamma pledge class of 1962 traveled to Lubbock, Texas, to attend the Texas Gamma Chapter's Founders' Day celebration. During the weekend, the Pi Phis also toured campus and enjoyed lunch at the Texas Tech Club overlooking the stadium.



TEXAS

In May, five past Grand Council members traveled to San Antonio, Texas, to visit with past Grand President BETH VAN MAANEN BEATTY, Texas Gamma. From back left, Ohio Alpha CAROLYN HELMAN LICHTENBERG, Grand President Emerita JEAN WIRTHS SCOTT, Pennsylvania Beta, North Carolina Beta CAROL INGE WARREN and South Carolina Alpha SARAH RUTH "SIS" MULLIS. Seated from left, Texas Gamma BETH VAN MAANEN BEATTY and Texas Delta CAROLYN PAVLETICH LESH.



# In Memoriam

Because of space constraints, *The Arrow* will only print the entirety of an obituary for a past Grand President. If you know a sister who has died, please email Alison Bauer at [alison@pibetaphi.org](mailto:alison@pibetaphi.org) or mail to Headquarters. Names will only be listed in *The Arrow* if accompanied by a published notice, such as a newspaper or newspaper website obituary or a funeral program/prayer card.

In Memoriam lists the name and initiation year of each member who has died.

## Arizona Alpha

Peggy Paxton Babby, 1950  
Elnora Little Bell Hansen-Olsen, 1933

## California Delta

Alice Rankin Beard, 1937

## California Zeta

Patricia Huscher Brenner, 1950

## Colorado Alpha

Margaret Abel Elam, 1943  
Eileen McCauley Humphries, 1942

## Florida Alpha

Doris Hill LaRoche, 1938

## Florida Beta

Doris Smith Swope, 1949

## Florida Gamma

Martha McCord Weathers, 1945

## Idaho Alpha

Beverly Whitson Akers, 1945  
Gertrude Gnaedinger Turley, 1935

## Illinois Alpha

Nancy Nevius McKee, 1957  
Mary Turnbull Mengler, 1934

## Illinois Eta

Barbara Gilman Bivens, 1940

## Illinois Zeta

Margery Lloyd Shuster Doyle, 1939

## Indiana Alpha

Louise Kelch Vandivier, 1929

## Indiana Beta

Nancy Scheid Neumayer, 1954  
Penny Garrett Wooldridge, 1963

## Indiana Delta

Susan Ann Tredwell, 1964

## Indiana Gamma

Mary Sims Root, 1942

## Iowa Alpha

Pauline Carroll Shepp, 1936

## Kansas Alpha

Joan Darby Edwards, 1939  
Mary Edgerton Ranney, 1937

Ruth Granger Stauffer, 1946

## Kansas Beta

Ruth Strickland Bickford, 1930  
Norma Ryan Bisagno, 1946

## Kentucky Alpha

Virginia Stockhoff Boebinger, 1937

## Louisiana Alpha

Susan Tatum Hays, 1961

Ruth Harper Watson, 1955

## Louisiana Beta

Lucille Hopkins Hodge, 1938

## Manitoba Alpha

Kit Bingeman Stevenson, 1940

## Maryland Alpha

Esther Evans McCauley, 1937

## Michigan Alpha

Mary Marshall Ramant Young, 1944

## Michigan Beta

Nancy Bridge Ruedig, 1945  
Mary Reinhart Tamsen, 1975

## Missouri Alpha

Lee Dickinson Loffer, 1940

## Missouri Beta

Evelyn Bissell Horner, 1935  
Marion Buck King, 1945

Beverly Lueders Weihe, 1945

## Missouri Gamma

Elizabeth O'Neal Riggins, 1968

## Nebraska Beta

Ardyce Gidley Bohlke, 1962

## Nevada Alpha

Crystal Hussey Bailey, 1998  
Cheryl Walker McMullen, 1969  
Patricia Burkhalter Moore, 1948

## New York Alpha

Marcia Mulligan Bertelson, 1953  
Janet McCale Douglas, 1953

## New York Delta

Natalie Egleston, 1983

Nancy Hislop McPeck, 1958

## North Carolina Alpha

Helen Brundage Crowell, 1951

## Ohio Beta

Janet Cleveland Teachnor, 1947  
Margaret Davis Wood, 1945

## Ohio Delta

Ann Reuter Dove, 1955

Shirley Shank Gibbons, 1953, affiliated Ohio Beta

Phyllis Hazelwood Hamlin, 1949

Peggy Fuller Sandberg, 1953

## Oklahoma Alpha

Marcie Henry Stockwell, 1977  
Mary Porter Walsh, 1949

## Ontario Alpha

Catherine Bryans Fallis, 1938  
Sally Wigle Somers, 1955

## Oregon Alpha

Julie Caspell Engel, 1981  
Carol Kraig Kienow, 1964  
Joan Mimnaugh Pierson, 1947  
Betty Schaefer Wheeler, 1945, affiliated Washington Alpha

## South Carolina Alpha

Mary Simpson Bailey, 1940  
Anne Howerton Faircloth, 1951

## South Dakota Alpha

Sally Olson Roggen, 1951

## Tennessee Beta

Nancy Perry Morgan, 1941

## Texas Alpha

Jeanne Richey Amacker, 1936

Jeannette Russell Baker, 1938  
Nancy Muse Bass, 1934  
Carroll McPherson Gilmer, 1937  
Betty York Harp, 1948  
Sallie Griffis Helms, 1972  
Elva Johnson Johnston, 1935  
Isabel Kronzer Mayer, 1936  
Mary Graham Pate, 1966

## Texas Beta

Joan Segars Ford, 1949  
Ruth Dyer Hammond, 1937  
Barbara Clements McCall, 1952, affiliated Texas Alpha

## Utah Alpha

Cleone Peterson Eccles, 1954

## Virginia Alpha

Lynn Hume Stuart, 1957  
Marjorie Vale Wilson, 1940, affiliated Indiana Beta

## Washington Alpha

Shirlee Middlesworth Hogenson, 1946

## Wisconsin Alpha

Nancy Edwards Stevens, 1947

## Wisconsin Beta

Marion Newell Dassie, 1945  
Janet Macy Lawrence, 1948, affiliated Oregon Alpha

Barbara Messmer Lippman, 1939  
Genevieve Fawcett Rich, 1932

## Wisconsin Gamma

Carol Duthie Holbrook, 1950

# Pi Phi Express



**X401**  
NEON SUNGLASSES  
\$3

**X402**  
PEEPER  
KEEPERS  
\$3



**X419**  
NEON FLIP  
FLOPS  
\$20



**X615**  
ZEBRA  
TUMBLER  
\$16



**X101**  
NEON TANK  
\$21





**MD177**  
FRESH WATER  
PEARL NECKLACE  
\$100

**PMD226**  
PEARL AND  
GARNET NECKLACE  
\$125

**M188**  
OVAL DISK  
NECKLACE  
\$40



**MD230**  
CRYSTAL WATCH  
*Polished ionic-plated  
brass casing, accented  
with cubic zirconias  
and a stainless steel  
backing. Leather strap.*  
\$50

**PMD223**  
ARROW WRAP  
BRACELET  
\$120



**MD220**  
PINK SAPPHIRE  
BADGE  
\$250



**MD219**  
PINK SAPPHIRE  
AND PEARL BADGE  
\$250



**MD218**  
AQUAMARINE  
AND PEARL BADGE  
\$250



**MD165**  
ANGEL PENDANT  
\$32

**PX511**  
ANGEL WING  
PENDANT  
\$16

**MD141**  
CREST  
PENDANT  
\$38



All jewelry is sterling silver or 10k gold unless otherwise noted.  
Jewelry is enlarged to show details.

[WWW.PIBETAPHI.ORG/STORE](http://WWW.PIBETAPHI.ORG/STORE)

## Marilyn Simpson Ford Award Winner



Mariellen Sasseen, Director of *To Dragma* and Archives for Alpha Omicron Pi Fraternity, received the 2013 Marilyn Simpson Ford Award at the Fraternity Communications Association annual conference.

The Fraternity Communications Association (FCA) awarded the Marilyn Simpson Ford Award to Mariellen Sasseen, Director of *To Dragma* and Archives for Alpha Omicron Pi Fraternity, at its 2013 annual conference in May.

This award was established in 1989 by Pi Beta Phi to honor longtime *Arrow* Editor MARILYN SIMPSON FORD, Nebraska Beta. It is given to an individual who represents an FCA-member organization and has distinguished himself or

herself through outstanding service to FCA.

Mariellen, a member of Alpha Omicron Pi, served as Chapter President and a Panhellenic Council officer while attending the University of Alabama. After graduation, Mariellen became active in the Nashville Alumnae Chapter of Alpha Omicron Pi and served as President for the alumnae organization. She then became an international

volunteer for Alpha Omicron Pi, which led to a staff position at the fraternity's international headquarters.

Since 1995, Mariellen has been responsible for Alpha Omicron Pi's award-winning magazine, *To Dragma*, and for the fraternity's archives. Over the last several years, Mariellen has helped digitally archive Alpha Omicron Pi's historical items, including documents, photographs and past issues of *To Dragma*. Mariellen also plays an instrumental role in the creation of the organization's marketing materials.

As a member of FCA, Mariellen has served as Awards Committee Chairman, Annual Conference Committee Chairman and New Member Committee Chairman, three of the Association's most visible and vital programs. Mariellen has also served as a member of FCA's membership strategy committee and public relations committee. In 2008, she worked diligently alongside other FCA leaders to create the Association's first strategic plan. She then worked to implement the changes she was responsible for, and did so two years ahead of schedule.

Colleagues and friends know Mariellen as a hard-working, purposeful, thoughtful and courteous individual. During her 18 years of membership in FCA, she has worked earnestly to advance the Association's goals and done things because they are right, not because of recognition that may be received.



### Pi Phis loved the Spring Arrow! See what they said on Twitter ...

@TriciaBanach: <3 the "Represent your Brand" article in #TheArrow. VPCs I hope u are reading! @PiBetaPhiHQ #ringching #appealingvsappallingapparel #R3

@IowaBetaPiPhis: Read the latest #TheArrow from @PiBetaPhiHQ! Look at what you are tweeting and what you are posting. Represent your brand well, angels!

@CheechM: Just read Arrow article "You Represent the Brand" from Spring '13 issue! Wonderfully written & great tips #happycampusadvisor

@maddieb11: First time I've sat down and read #TheArrow from front to back. Really puts the bigger Pi Phi picture into perspective. #ppl @PiBetaPhiHQ

@Yathatfrancesca: My mom got *The Arrow* magazine today and read it all. Afterwards she told me I was apart of something amazing. WELL DUHHHH #piphilove

@kctcotton: It's always a great day when #thearrow comes in the mail. #piphiforlife #piphinerd @PiBetaPhiHQ @ValpoPiPhi

## The Arrow Reader's Guide

*The Arrow* of Pi Beta Phi is the official quarterly publication of Pi Beta Phi Fraternity. The purpose of *The Arrow* is to present matters of value to Pi Beta Phi; furnish a means of communication among collegiate chapters, alumnae organizations and officers; and represent the worthiest interest of Fraternity women.

### CONTACT THE ARROW:

*The Arrow* of Pi Beta Phi Fraternity  
1154 Town & Country Commons Drive  
Town & Country, Missouri 63017  
TheArrow@pibetaphi.org  
Phone: (636) 256-0680 Fax: (636) 256-8095

### HOW TO RECEIVE THE ARROW

Collegians receive quarterly issues of *The Arrow* each year with payment of collegiate dues through their chapter. Individual copies are mailed to each undergraduate member's permanent address, and each Pi Beta Phi chapter receives six copies.

The Fall *Arrow* is mailed to all alumnae. Dues paying alumnae are mailed the winter, spring and summer issues. *The Arrow* is posted online, and non-dues paying alumnae who have a good email address listed with Headquarters (HQ) receive an email notification. Messages are also posted on the Fraternity's official Facebook page and Twitter when the magazine is available online.

To receive four hard copy issues of *The Arrow*, pay your \$25 annual Fraternity alumna dues to your local alumnae organization or directly to HQ by mailing a check to Pi Beta Phi Fraternity, Alumna Dues, 1154 Town & Country Commons Drive, Town & Country, Missouri 63017. You can also pay your dues online at [www.pibetaphi.org](http://www.pibetaphi.org).

### HOW TO MAKE AN ADDRESS CHANGE OR NAME UPDATE

Visit the profile section of the website, or email your name and/or address changes to [headquarters@pibetaphi.org](mailto:headquarters@pibetaphi.org). You may also call Pi Beta Phi HQ at (636) 256-0680 or mail a written notice to Pi Beta Phi Headquarters.

### LETTERS TO THE EDITOR

Email your letter to the Editor at [editor@pibetaphi.org](mailto:editor@pibetaphi.org). Please include your full name and chapter of initiation. *The Arrow* reserves the right to publish any letter received. Letters may be edited for space and clarity.

### HOW TO GET PUBLISHED

All Pi Phis are encouraged to submit news and stories to *The Arrow*. All submissions are subject to editing for content, grammar and space constraints. When submitting a story, be sure to include a member's preferred chapter, first, maiden and last names. As a general rule, *The Arrow* does not print stories about weddings, engagements, pinnings or birth announcements. Visit *The Arrow* Web page for more information and to download Pi Beta Phi's Photography Guidelines. We cannot guarantee the publication of any submission. We receive so many and space is limited.

### ARROW SUBMISSION DEADLINES

Fall Issue: August 1                      Spring Issue: February 1  
Winter Issue: November 1              Summer Issue: May 1

### Pi Beta Phi Foundation Wins Communication Award

Pi Beta Phi Foundation took home second place in the eNewsletter category for *The Bow* at the Fraternity Communications Association annual conference this past spring. *The Bow* is sent to Foundation donors each quarter. Congratulations to the Foundation staff who put in many hours of hard work on each issue.

### It's a Family Affair: Legacy Webinars

Is your legacy (sister, daughter or granddaughter) going through recruitment this year? Want to learn more about Pi Phi's legacy policy? Join an intimate discussion with Director Membership TINA RIVARD, Pennsylvania Theta:

- Sunday, July 28, at 9 p.m. EST
- Tuesday, August 6, at 9 p.m. EST

Visit [www.pibetaphi.org](http://www.pibetaphi.org) to register today — space is limited!

### Congratulations to the 2013–2014 Foundation Scholarship and Fellowship Recipients

Pi Beta Phi Foundation is pleased to announce that 123 Pi Phis will receive scholarship and fellowship awards for the 2013–2014 academic year. A total of \$324,900 will be awarded, the largest amount in Foundation history. Thank you to the generous donors whose gifts made these scholarships possible. The Foundation would also like to thank the scholarship committee volunteers for their time and dedication reviewing every member application. For a complete list of scholarship and fellowship recipients, please visit [www.pibetaphifoundation.org](http://www.pibetaphifoundation.org).

### Upcoming Michigan Beta Reunion this October

Michigan Beta will celebrate its 125th anniversary during the University of Michigan's Homecoming Weekend, October 4–6, 2013. The festivities include a luncheon with guest speaker Pi Beta Phi Archivist and Historian FRAN DESIMONE BECQUE, New York Alpha, a breakfast and house tours highlighting the newest renovations. Invitations and details will be mailed in July. For hotel or general information please email [mibeta125@gmail.com](mailto:mibeta125@gmail.com) or contact Michigan Beta Chapter House Corporation President MARTHA BECKER VALEN, Ohio Delta, at (734) 429-4808.



Pi Beta Phi Fraternity  
1154 Town & Country Commons Drive  
Town & Country, MO 63017

NONPROFIT  
ORGANIZATION  
US POSTAGE  
PAID  
PERMIT NO 1050  
COLUMBUS, OH

CHANGE SERVICE REQUESTED

# Save the Date!



**February 7-9, 2014**



Collegiate Leadership Academy

**June 20-22, 2014**



FHC Housing Symposium  
Alumnae Leadership Summit

**July 2014**



College Weekend — New!