

The Arrow

OF PI BETA PHI • SUMMER 2021

LINKED Through Friendship





OF PI BETA PHI • SUMMER 2021

FEATURES

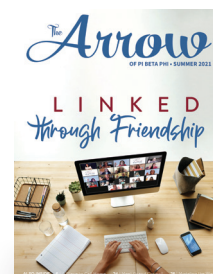
10 LINKED THROUGH FRIENDSHIP: CONVENTION 2021

26 MODELING THE WAY

42 DOING OUR BEST WITHOUT FEAR

ON THE COVER

Pi Phi members are bound by the power of friendship, whether in-person or from afar. This year's convention theme, *Linked through Friendship*, inspired the stories within this issue of *The Arrow* and encouraged members to renew their commitment to our sisterhood and to each other.



IN EVERY ISSUE

- 2 PERSPECTIVE
- 3 LETTERS TO PI PHI
- 4 ONE, TWO, THREE WORDS
- 6 BUILT FOR SISTERHOOD
- 8 PURPOSEFULLY PI PHI
- 9 IN HER WORDS
- 32 READ > LEAD > ACHIEVE®
- 34 FOUNDATION
- 36 COLLEGIATE NEWS
- 42 COLLEGIATE SPOTLIGHT
- 43 ALUMNAE NEWS
- 48 REMEMBER
- 50 IN MEMORIAM

FEATURED CONTRIBUTORS

FRAN DESIMONE BECQUE, New York Alpha



26

THE ARROW® OF PI BETA PHI

Summer 2021 • Vol. 137 No. 4

GRAND COUNCIL

Lisa Gamel Scott Emory McGinnis Eison
Melissa Malone Colvin Ana Mancebo Miller
Jamie Feist Daniels Greer Horne
Amy Lorenzen Southerland

EXECUTIVE DIRECTOR

Shawn Eagleburger

EDITORIAL STAFF

Jordan Aschwege TG Livak
Caroline Majers Backer Cassidy Nieves
Emily Kuryla Brittany Robb

PI BETA PHI FRATERNITY FOR WOMEN

1154 Town & Country Commons Drive
Town & Country, Missouri 63017
(636) 256-0680 | FAX (636) 256-8095
headquarters@pibetaphi.org
pibetaphi.org

CONNECT WITH US!

[f/pibetaphi](#)
[t/pibetaphihq](#)
[@pibetaphihq](#)
[in/Pi Beta Phi Fraternity](#)
[v/pibetaphihq](#)
[e/pibetaphi.org/blog](#)

SUBMISSIONS

All Pi Phis are encouraged to submit news and stories to *The Arrow*. Articles may be submitted online at [pibetaphi.org/submit](#). Visit [pibetaphi.org/arrow](#) for submission and photography guidelines.

All photos and written submissions become the property of Pi Beta Phi, and are subject to editing for content, grammar and space constraints, and may be used for other educational or marketing purposes by the Fraternity. We cannot guarantee the publication of any submission.

SUBMISSION DEADLINES

Fall — August 1 Spring — February 1
Winter — November 1 Summer — May 1

ADDRESS/NAME CHANGES

Please direct any address or name changes by email to thearrow@pibetaphi.org or by mail to *The Arrow*, 1154 Town & Country Commons Dr., Town & Country, Missouri, 63017. You may also call Pi Beta Phi Headquarters at (636) 256-0680 or update your profile at [pibetaphi.org/profile](#).

HOW TO RECEIVE *THE ARROW*

To receive four hard copies of *The Arrow*, pay your \$35 annual alumna dues to your local alumnae club or directly to Headquarters. Visit [pibetaphi.org/dues](#) or mail a check to Headquarters.



SHAWN EAGLEBURGER

Executive Director
Pi Beta Phi Fraternity and
Fraternity Housing Corporation

Dear Pi Phis,

In 2010, while preparing to train our Leadership Development Consultants, I read an article announcing the new words that would be added to the Merriam-Webster Dictionary. One word in particular on that list got my mind churning: *unfriend*. Of course, the word unfriend came into use with the rise of social media which gave us the opportunity to formally and publicly showcase our list of friends. And, if we were going to add friends to the list, we needed a way to remove them. For Pi Phi — an organization rooted in friendship — I thought this concept was most interesting.

Some friendships are intentional and come from building a personal coalition of comrades. Many friendships come by chance, organically through experiences, repeat interactions or even third parties. Often, friendships are made unconsciously and unintentionally — someone we are assigned to work with on a class project, someone we sit next to at a meeting, someone who has a similar schedule and always seems to show up at the same time to daycare pick up. That’s what makes friendships exciting. On the other hand, ending a friendship — or unfriending — can only come about as an intentional or conscious act. Friendships may fizzle out as we move through life, but — as proven by an encounter with a long-forgotten friend — the flame of friendship doesn’t self-extinguish.

In this issue of *The Arrow*, I believe there are two crucial lessons for us all. First, it feels good to celebrate being *Linked through Friendship*. The theme of Pi Beta Phi’s 73rd Convention has life beyond those few days in June and July 2021; it is the underlying meaning of everything this organization does. And Pi Phi does it so well! I’ve personally benefitted from the value of friendship that’s ingrained in Pi Phi and am better for it. Let’s not look for an invitation to celebrate friendship, let’s make it a regular venture.

Second, we must be careful not to interpret an act of change as a decision to “unfriend.” It’s no surprise to anyone, there is great amount of change that is taking place all around us — and within us. To some, it all feels too fast and to others, too slow. From the hiring of a new Executive Director, a man, leading a women’s organization, to significant convention legislative decisions that will forever impact the organization. For a 154-year-old organization, some change is inevitable. It may be scary — and potentially feel threatening — but it is not the organization pushing anyone away. So, step in closer, channel your passion, hang in there as Pi Phi grows and evolves and works to make the organization stronger. Avoid the decision to unfriend. Pi Beta Phi needs your time, talents, passion and involvement to help the organization remain relevant. Pi Phi is stronger with a rich history and a fresh vision for our place in the future.

True friendship — the kind of friendship you can’t walk away from — is what Pi Phi creates. I’m grateful and humbled to help lead an organization that fosters that kind of connection. ◀

Your friend,

Shawn.

On March 31, 2021, Shawn Eagleburger was introduced as the 16th Executive Director of the Fraternity. He originally joined staff in 2009 and has held several roles, including for Pi Beta Phi Foundation. Shawn claims to be Pi Beta Phi’s proudest fan. Learn more about Shawn, including his thoughts on what it means to be a man leading a women’s organization, at pibetaphi.org/seagleburger.

Letters to Pi Phi

Pi Beta Phi is committed to delivering a premier experience for all members. To fulfill this commitment, we are continually striving to learn what our sisters need from the membership experience and find the best ways to deliver. We believe we can strengthen the inherent value in Pi Phi sisterhood by seeking feedback from our members and using what we learn to help plan our next steps.

We want to hear from you, whether you're sharing your feelings on the latest issue of *The Arrow*, your thoughts on a Fraternity email or social media post or a heartfelt critique encouraging Pi Phi to do better. Below are a selection of thoughts Pi Phi sisters shared on recent stories in *The Arrow*, social media and Fraternity communications.

In response to our Founders' Day post asking, "What has Pi Phi given you?":

ANTONETTA AXUP, Illinois Alpha, initiated 2014

"Pi Phi has given me so many things! I have amazing sisters who support and care for me, even though we are miles apart. I was able to have leadership opportunities during undergrad that developed my skills and confidence. Those are just to name a few. Ring Ching Angels!"

In response to our Facebook post, Better Together:

FOREST NEWCOMER, Oklahoma Beta, initiated 1968

"I am so encouraged reading this. Because it is coming from Pi Phi, I know it is sincere, not just lip service."

In response to Grand President Marla Neelly Wulf's Founders' Day message:

JANICE GROW HOWSMON, West Virginia Alpha, initiated 1957

"I am grateful for the ways in which Pi Beta Phi has blessed my life these many years. I was initiated in 1957 and am still in touch with sisters in my class at West Virginia Alpha, West Virginia University. May the wine and blue continue to bless others as it has blessed me."

CLAIRE ROBERTS ADAMS, Alabama Beta, initiated 1959

"Celebrate Founders' Day? When the "spirit of Sincere Friendship - to pledge themselves to each other and their shared core values" is more pervasive than the ideas of "Diversity, Equality, and Inclusion" now being pushed by Grand Council, I will be inclined to again celebrate Founders Day and make a few donations, but no longer inclined."

The opinions expressed in Letters to Pi Phi do not necessarily reflect the opinions of Pi Beta Phi Fraternity, nor does Pi Beta Phi endorse the opinions or viewpoints expressed within these letters. Let's keep the conversation going, together — send your reflections and feedback to thearrow@pibetaphi.org. Please include your full name and chapter of initiation. ◀

CONGRATULATIONS, 2021-2022 SCHOLARSHIP RECIPIENTS

Congratulations to the 101 scholarship and fellowship recipients receiving awards totaling \$248,800 for the 2021-2022 academic year! Thank you to all the sisters and friends who make these scholarships possible by supporting our Foundation. View the full list of scholarship recipients at pibetaphi.org/scholarships.

PI PHI LEADER ELECTED NATIONAL PANHELLENIC CONFERENCE DIRECTOR

Indiana Alpha **HELEN LAHRMAN** was elected to serve on the National Panhellenic Conference (NPC) Board of Directors for the 2021-2023 term. The NPC Board of Directors sets the strategic direction for the NPC and creates a vision for the sorority experience today, tomorrow and into the future. We look forward to all Helen will accomplish working to empower our Panhellenic community!

WELCOME 2021-2023 INTERNATIONAL OFFICERS

Congratulations to our International Officers for the 2021-2023 biennium! These leaders generously give their time and talent in service to Pi Beta Phi through their work with our Fraternity, Fraternity Housing Corporation (FHC) and Pi Beta Phi Foundation. The Officer Directory will be published in the Fall *Arrow*.

To the outgoing officers leaving their current role serving the Fraternity, FHC and Foundation, thank you for your dedication to serving Pi Beta Phi and all that you've given to our sisterhood.

NOMINATE A PI PHI FOR THE CAROLYN HELMAN LICHTENBERG CREST AWARD

The Carolyn Helman Lichtenberg Crest Award is given to distinguished individual alumnae who have positively impacted their communities through community service or professional achievement. Nominations are now open and will close on October 1, 2021. Learn more and nominate a Pi Phi at pibetaphi.org/awards.

INTRODUCING OUR 2021-2022 LEADERSHIP DEVELOPMENT CONSULTANTS

Pi Beta Phi is pleased to introduce the 11 outstanding women serving as our 2021-2022 Leadership Development Consultants (LDCs). We look forward to all they will accomplish working with our chapters and empowering our sisterhood.

TRAVELING LEADERSHIP DEVELOPMENT CONSULTANTS

ELISABETH BRAUN, Colorado Gamma
REBECCA CROSBY, Texas Eta
KAITLYN DIAL, Idaho Alpha
KARLI SUGAR, Nebraska Gamma
STEPHANIE TREANOR, Arizona Gamma

RESIDENT LEADERSHIP DEVELOPMENT CONSULTANTS

JORDAN FREUDENBERG, Delaware Alpha
MADDISON GATES, Connecticut Alpha
CHRISTIANA HOLLADAY, Colorado Gamma
SARAH MOORE, South Carolina Alpha
DOROTHY RUOFF, Montana Alpha
TORI VASQUEZ, California Epsilon

To learn more about the 2021-2022 LDC class, visit pibetaphi.org/blog.

PI BETA PHI WINS COMMUNICATIONS AWARDS

Pi Beta Phi received two awards at the virtual Fraternity Communications Association Annual Conference in April.

- Second Place in Social Media Engagement
- Third Place in Writing: Persuasive or Opinion for the Fall 2020 feature Better Together

Congratulations to the Fraternity volunteers and Headquarters staff who contributed to these accomplishments!

SUPPORT PI PHI SISTERHOOD WITH YOUR ANNUAL ALUMNA DUES

Before our founders chose our name, motto or arrow badge, they came together with a shared purpose — to cultivate Sincere Friendship and promote happiness among women. The most meaningful way you can ensure Pi Beta Phi continues to share this purpose with our members, our communities and our campuses is through your loyal support. Your international annual dues are an expression of your loyalty and help the Fraternity consistently deliver a premier experience for all members — providing vital resources needed to operate our beloved Pi Beta Phi. Fulfilling your commitment keeps you connected to the thousands of sisters who are there to inspire and encourage you, while creating opportunities for future generations of Pi Phis to experience that same unwavering support. Pay your dues online today at pibetaphi.org/dues.

CHAPTER AND ALUMNAE CLUB ANNIVERSARIES

As Pi Beta Phi celebrates 154 years of sisterhood, many of our chapters and alumnae clubs are achieving their own milestones. Chapter and alumnae club anniversaries are true testaments to the Lifelong Commitment of our members. Congratulations to the chapters, clubs and members celebrating significant milestones in 2021!

ALUMNAE CLUBS

- Atlanta, Georgia - 100 years
- Boulder, Colorado - 100 years
- Eugene, Oregon - 100 years
- Milwaukee, Wisconsin - 100 years
- North Carolina Triangle - 75 years
- Quad Cities, Iowa-Illinois - 75 years
- Naples, Florida - 50 years
- Aurora, Colorado - 25 years
- Boise, Idaho - 25 years
- Bozeman, Montana - 25 years
- Denton, Texas - 25 years
- Duncan, Oklahoma - 25 years
- Highlands Ranch, Colorado - 25 years
- Midwest City, Oklahoma - 25 years
- Norman, Oklahoma - 25 years
- Oklahoma City, Oklahoma - 25 years
- Schenectady, New York - 25 years
- St. Petersburg, Florida - 25 years
- Wichita Falls, Texas - 25 years

CHAPTERS

- Florida Beta - 100 years
- Indiana Delta - 100 years
- Montana Alpha - 100 years
- North Dakota Alpha - 100 years
- New Mexico Alpha - 75 years
- California Mu - 25 years
- Ontario Gamma - 25 years

From left: Ontario Gammas **PAOLA VARELA, LAUREN YEE, MATTI LUSTIG** and **GISLAINE LEVASSEUR**.



Did you recently celebrate a reunion or anniversary? Submit your story and photos at pibetaphi.org/submit for a chance to be featured in a Pi Phi publication. ◀

A Place to Call Home

For many Pi Phis, living in the chapter facility is a once-in-a-lifetime experience. The opportunity to be surrounded by sisters allows members to grow and thrive in environments where they know they will find support. It's often said that Pi Phi is a home away from home, but for many sisters looking for a place of comfort and solace it is so much more.

At the onset of the COVID-19 pandemic, chapters across North America were forced to close their doors for the remainder of the term. As the pandemic continued into the fall, universities and chapters had to decide whether they would open their facilities for the 2020-2021 academic year. Each chapter and campus faced the lengthy and challenging decision to open housing facilities - requiring a great deal of planning and preparation.

For the California Zeta Chapter, planning started with the hope to welcome members home to the University of California, Santa Barbara campus for the fall term, but

necessitated flexibility and collaboration to do so. After several meetings with chapter officers, Alumnae Advisory Committee members, Fraternity Housing Corporation (FHC) and the Region Eight Team, California Zeta was able to reconfigure its housing policies and design a transition plan with additional COVID-19 safety measures including increased cleanings, House Director trainings and a quarantine and isolation plan.

California Zeta chapter officers and volunteers knew what opening the facility would mean to sisters. "It was important for members to have a place in the chapter facility because several of our members did not have options outside of the chapter house," Vice President Finance/Housing **BRITTNEY ROGERS** says. "They had relied on living at Pi Phi."

While many members were able to accommodate the housing changes brought on by the pandemic, several members faced increased stress and additional challenges. There were several out-of-state members who

From left, California Zetas **EMMA SCHABERG**, **KATIE PETERSEN** and **EMMA BRAUER** during the chapter's first-ever virtual 5K philanthropy event, Running For Readers.





From left, **LEANNE HAGEN**, **FRANCES NOLAN** and **CHLOE BABOCK** outside the California Zeta Chapter house on the first day of fall quarter.

expressed that living in the chapter facility was their only opportunity to return to California for the school year.

Whether coping with a challenging time change from California to their home state or a lack of access to Wi-Fi and technology, many members would have faced additional strain if the chapter house didn't open. The stress of facing a lack of housing only compounded existing issues associated with student life in a pandemic. Sisters faced this increased pressure along with the burdensome social challenges and mental health concerns that affected all students during the pandemic.

As Director Housing, **QUINN SHOMO** recognized the concerns she heard from chapter members and worked in conjunction with advisors and volunteers to safely reopen the chapter house. "Everyone in our chapter knows they have a place to call home because of Pi Phi," Quinn says. "In times of crisis, it's nice to know you have your Pi Phi sisters standing by to help you."

Beyond providing a sense of home, living in the chapter facility also offered members a notable virtual learning experience. "With no access to the library or on-campus resources, being able to spread out and study in the

chapter house allowed us to focus on our academics without the added pressure of finding somewhere to go," Brittney says.

The California Zeta Chapter facility offered several study spaces from the chapter room to the computer room. With plenty of space to social distance, members were able to study and attend classes in a variety of environments - whether in a private room or a shared space with sisters.

Over the last year, many sisters - both collegians and alumnae - lived, worked and studied apart from one another. Live-in members at California Zeta shared that being surrounded by their sisters provided light during some of the more difficult moments of the pandemic.

Quinn shares that many days started with socially-distanced breakfast, followed by members' course work and a socially-distanced lunch. Often, members would end their day by walking to the beach to watch the sunset or watching a movie. Reflecting on the last year living in the chapter facility, Quinn says, "While it wasn't always easy, it was certainly worth it to be able to live alongside sisters."

Although the housing experience has looked different over the past year, it has continued to support sisters at a time in their lives when they need it most. With the Fall 2021 term fast approaching, many chapters are making plans to reopen their facilities - some for the first time since their facilities closed in Spring 2020. Sisters will soon be together again, caring for one another, pursuing academic goals and celebrating the ups and downs of life.

Across North America, Pi Phi housing facilities are providing members with a sense of home. Chapter facilities support more than just housing - encouraging members' educational pursuits, meeting expectations for safety and allowing space to develop Sincere Friendships. Whether living in a traditional chapter facility or among sisters, Pi Beta Phi will always be a place to call home.

How did living in the chapter facility support your collegiate experience? We want to share your housing story!

Submit your photos and stories at pibetaphi.org/submit. ◀

Choose Your Own Adventure

“Do what you love, love what you do” is age-old advice. Many strive to find not just a job, but something they enjoy doing. Massachusetts Gamma **JENNY XU** considers herself lucky to have turned her passion for video game development into a career. “It’s been fun to finally do what I’ve always wanted to do,” Jenny says. “It used to be my hobby, now it’s my job.”

Jenny is the CEO of Talofa Games - a gaming studio she started after winning the Niantic Beyond Reality Contest in 2019. In her role as CEO, Jenny oversees the game design, copywriting, art design, audio and engineering for Run to My Heart - Talofa Games’ social running mobile game.

As a child, Jenny spent most of her time drawing her favorite Pokémon and Neopets characters. She realized at a young age that video games were a way to bring her art to life. “I would often write visual novels or short stories that players could experience,” Jenny says. “I have a love of drawing, animating and storytelling.” For Jenny, video games are the most immersive way to experience a story.

Video game development requires a great deal of world building - designing the game play, writing dialogue,

selecting music and even developing backstories for the characters. Everything from the dialogue between characters to the adjustment of sound is designed to elicit emotion from a player, and - unlike in books and movies - players have agency in the storylines they choose. The different components of each game are typically shared among a team, but Jenny designed many of her games on her own.

At 12 years old, after teaching herself to code, Jenny made her first video game. By middle school, Jenny was releasing a game every week - sometimes every day. She eventually founded JCSoft Inc. in order to share her games on Apple’s App Store. Jenny’s confidence continued to grow as some of her games hit the top charts and started providing a small income. “I realized if I was making games and utilizing monetization strategies, there was actually a way for me to build a career around this.” Jenny says. “That was an empowering moment for me.” The financial instability of a career in game development is a risk for anyone, but especially for women. “It’s still considered special if you’re a woman in the game industry,” Jenny says. “And even more special if you own your own studio.” It wasn’t until Jenny entered college that she realized the lack of women in game development. “People very quickly assumed that I was a guy,” Jenny says. “When I attended my first game conference, people were surprised to learn that I made my games on my own.”

Although Jenny recognized she was creating a path for women in video game development, at times she still felt lonely. It was the support from other women mentors in the gaming industry that provided Jenny with the confidence needed to continue. “Mental health is really important,” Jenny says. “Anyone who wants to enter the game developer community should find a support network.”

Jenny’s passion for gaming led to her successful and inspiring career in video game development. Just as she frequently looked to her mentors for guidance, Jenny knows she serves as inspiration to many young women and girls interested in gaming. Her advice is to share your work as much as possible. “The more you make, the easier it is to learn,” Jenny says. “Learn by doing and put stuff out before you’re ready. If you’ve put something out and you’re not even a little embarrassed by it, you’ve put it out too late.” ←



Massachusetts Gamma **JENNY XU**

Peggy Sweeney-McDonald

LOUISIANA BETA



WHAT DOES A TYPICAL DAY LOOK LIKE?

My day begins with drinking coffee and reading my spiritual and motivational books. I have a Gratitude Journal where I write five things I'm grateful for every day. It sets my day on the right path. I walk the lake in our neighborhood with my 85-year-old father every day. We always end our walk sitting on a bench and watch the Canada geese and herons. Looking out at the sun glistening on the lake and the wildlife inspires me. I write in the afternoon and work on marketing for my podcast before cooking dinner for my husband and father. Several times a month, we have a big family dinner with my three younger sisters - who were Pi Phis - and their families, including two nieces who were also Pi Phis at Louisiana State University! Now that we have all been vaccinated, my husband and I plan to go to music festivals once they begin again!

HOW HAS THAT CHANGED THIS PAST YEAR?

When the pandemic hit, my husband and I were planning our second honeymoon to Italy. We had to scramble to cancel everything. Our family immediately began to have weekly Zoom happy hour calls and planned some social distanced outdoor get-togethers in our backyards. It made us grateful for each other and our health.

CAN YOU TELL US ABOUT THE MOTIVATION BEHIND CREATING YOUR PODCAST, LIFE IN THE A-ZONE?

I moved home to Louisiana in 2016, when my mother was diagnosed with Alzheimer's. Throughout the tough caregiving journey with my beloved mother, I thought I should write about my journey. A few months after she passed, I began writing a memoir, and then COVID hit. I switched gears and decided to share my bittersweet journey in a podcast which launched on the first anniversary of her death. The first episode begins on the day Mom was officially diagnosed. The 20 sequential episodes are stories of love, laughter, life and loss over three years. I have listeners from around the world write to tell me they laugh, cry and relate to my journey. I am now working on the book.

WHAT DO YOU LOVE MOST ABOUT YOUR WORK?

Writing and sharing my experience, strength and hope has helped me process my grief and heal. Connecting with other people who have experienced the same thing or who are now trudging the tough journey now is a blessing. Together we are stronger.

PI BETA PHI HAS TAUGHT ME ...

If you have good friends, you can get through anything! My Pi Phi sisters, who have known me since college, are the best friends to have. We can laugh and cry together because we have a bond that will never break. My sister, Louisiana Beta **SHANNAN RIEGER**, asked me to get involved with the Louisiana Beta Chapter when I moved back to Baton Rouge. I'm blessed to be an Alumnae Advisory Committee member along with some of my pledge sisters. I attended the 2019 Pi Beta Phi Convention in Washington, D.C., and to see a ballroom filled with Pi Phis was incredible. I've learned so much from the members who I mentor. It's a gift to watch them blossom and become leaders in the chapter. I know they will go out into the world and make a difference. Pi Phi is truly the gift that keeps on giving!

WHAT'S THE BEST ADVICE YOU'VE EVER RECEIVED?

The last advice my mother ever gave me was three weeks before she passed. She wasn't talking much and was very weak, but I think she could sense my helplessness and grief. She looked at me and said, "Don't forget how good you are!" When I'm discouraged or having a hard day, I try to remember her words.

Read more about Peggy at pibetaphi.org/blog. ◀



Hanging from every Pi Beta Phi arrow badge made since 1934 are 12 links of chain. Each of those links represents one of our 12 founders and the everlasting bonds of friendship they created for all Pi Phi sisters. The theme of Pi Beta Phi's 73rd Biennial Convention, Linked through Friendship, honored those bonds as members around the globe came together in celebration of Pi Beta Phi sisterhood.

A Pi Phi First

There's just something special about the energy at a Pi Phi convention — the feeling of rekindling old friendships, making new connections, sharing once-in-a-lifetime experiences and charting a course for the future of the sisterhood. When it became clear that the COVID-19 pandemic would make it impossible to hold a traditional, in-person convention, Fraternity leaders called on each other to reframe this challenge as an opportunity. How could Pi Phi provide a premier convention experience in a virtual format? How could we invite more sisters to share in the celebration, recognize the achievements of our members, chapters and clubs, and highlight the talents and strengths of our members in new ways? Months of brainstorming, researching and planning paid off. Pi Phi's first-ever virtual convention was also its best attended, with 2,052 sisters joining in programming over the weekend.

Missouri Alpha **MOLLY SHEN**, a television news anchor in Seattle, served as convention emcee. At the opening General Session on Friday night, Molly recapped the multitude of life-altering events that occurred during the past biennium — a global pandemic, civil unrest rooted in social injustice and significant challenges to the fraternity and sorority community, to name a few. Yet Molly also reminded convention guests that Pi Phi has experienced — and overcome — every one of these challenges in its 154-year history. "Coming together ... for this convention shows triumph," she said. "It is a victory. It will be an important part of our story forever more. It will be what defines the future of our sisterhood."

As she welcomed Convention attendees Friday night, Grand President **MARLA NEELLY WULF**, Kansas Beta,

outlined three messages she hoped Pi Phis would take away from the event. "First ... Pi Beta Phi is resilient," she said. "As Molly shared, over our 154-year history, our Fraternity has seen some things and we've always made it through. Second, Pi Beta Phi membership is relevant. Friendship and leadership are timeless and what we do best. And finally, you have great reason to be proud of our sisterhood. As an organization we have much to celebrate, and we will take time to do just that."

Making an Impact

At every convention, we share the most recent chapter in the story of Pi Phi's literacy work by describing the impact Pi Phi made during the last biennium — and this chapter looks different than any other in our history. Just a week after Pi Phi's 2020 Fraternity Day of Service Signature Events took place, the COVID-19 pandemic forced schools to close and children's reading programs to pause. As students transitioned to distance learning, the need for reading and educational materials in homes and classrooms became even more critical. Pi Phis found creative ways to stay connected to students, raise funds for our Foundation and volunteer in our communities — and our actions continued to make a big difference at a time when help was needed most. Our efforts were made possible by hundreds of dedicated Pi Phi literacy volunteers, as well as the generous donors who made gifts to The Literacy Fund at Pi Beta Phi Foundation. Because we chose to participate, donate and advocate for literacy, each of us is ONE who made a difference. We showed what we can accomplish — together — through the power of reading. Learn more and see our impact video at pibetaphi.org/literacy.

Legislative Outcomes

On June 26, the Fraternity began what would come to be the first day of the convention business session, with collegiate and alumnae delegates ready to vote on legislation that would shape the future of Pi Beta Phi. “The greatest duty we have as a convention body is to conduct the formal, legislative business of our Fraternity,” Marla reminded voting delegates as she called the session to order.

Delegates and non-voting convention attendees came to the meeting well prepared to debate and consider 27 legislative proposals to amend the Constitution & Statutes of Pi Beta Phi. During a lengthy meeting, only the first nine proposals were considered; eight of the nine passed. Fraternity leaders recognized the time constraints preventing proper consideration of the remaining proposals, and thus moved to continue the business meeting at a later date. After soliciting feedback from voting delegates regarding the time, date and venue for the continued business session, Grand Council scheduled the virtual follow-up session for July 24, 2021.

The continued business session reconvened with newly elected Grand President **LISA GAMEL SCOTT**, Colorado Alpha, serving as presiding officer. On the docket were the remaining 18 legislative proposals, including those relating to legacy and sponsorship, both of which were thoroughly debated by members representing a wide range of perspectives. Proposal 14 — to remove language regarding “special considerations” given to legacies during recruitment — was passed by a two-thirds vote. Proposal 15 — eliminating the requirement of sponsorship for a collegiate invitation — failed to reach the two-thirds vote requirement. In turn, Grand Council will provide sponsorship to all Potential New Members otherwise not sponsored, as was the case for the 2020-2021 academic year.

After reconsidering her vote at the June 26 session, a voting delegate brought a motion from the floor to reconsider Proposal 7 — to establish a chapter Vice

Right: Grand President **MARLA NEELLY WULF** swearing in her successor **LISA GAMEL SCOTT** during the first portion of the convention business session. Lisa presided over the continued business session as the newly elected Grand President.

President Inclusion and Director Community Inclusion. The convention body voted to reconsider the proposal, and after a lengthy debate, the proposal passed. The position will be first elected by chapters for the 2022 collegiate officer term. Another noteworthy change was the adoption of the Director Chapter Support as an International Officer position. The proposal was passed by the voting body and the July 24 session concluded with the installation of Pennsylvania Theta **TINA RIVARD** as the inaugural Director Chapter Support.

Lisa closed Convention 2021 by thanking attendees for their patience and grace throughout the entire virtual event. “May we always look back on this experience and know it was yet another gift given to us by our beloved Pi Beta Phi,” she said.

A complete list of legislative outcomes can be found at pibetaphi.org/legislation.

Marla Reflects on Her Journey

After the June 26 legislation and election results were announced, Marla shared her Pi Phi story in commemoration of the conclusion of her term as Grand President — a journey that began during recruitment at Kansas State University. “It was at 1819 Todd Road, in Manhattan, Kansas, that I first learned about sisterhood, unwavering support, Lifelong Commitment, opportunities for personal growth, leadership, Pi Phi Pride and Sincere Friendship,” she said. Her alumnae service to Pi Phi began after a move to Denver in the early 1980s, as she joined the Denver, Colorado, Alumnae Club and served on the Alumnae Advisory Committee for the newly





Members of the Tennessee Delta Executive Council celebrating convention weekend together. Back, from left: **EMMA JOSLIN, BRYNN MEYERS, CHLOE PRICE** and **KENDALL JONES**. Front, from left: **EMMA APPLEBAUM** and **CAMILLA WHITE**.

installed Colorado Delta Chapter. After retiring from a career in school administration and moving to Texas in the early 2000s, Marla completed a form in *The Arrow* sharing her willingness to serve, never imagining that her decision to give back would ultimately lead her to Grand Council.

She expressed gratitude for the support of sisters along the way, as well as the uniqueness and authenticity each member brings to the shared Pi Phi experience. “We are a sisterhood,” she said. “Just as in a family, we each bring ourselves: our differences, our similarities, our passions, our joys and sorrows. We are a sisterhood — promising to uphold the ideals of Pi Beta Phi, each one of us, for as long as we may live. Each one of us has pledged to do work for the betterment of society; to work for the development of our organization; to seek the beautiful and the good — not only outside our organization, but within.”

Marla continued to emphasize the importance of seeking the good as she reflected on the highlights and challenges of her term as Grand President. She reaffirmed the vision she shared in her opening remarks: Pi Phi is resilient, Pi Phi is relevant, and members have many reasons to take pride in our sisterhood as we look to the future. “The times may have changed; where we are in life may have changed; yet Pi Beta Phi — our sisterhood, our mission and vision, our commitment to literacy and our core values — has not changed,” she said. “For such a time

as this, we have been called to use our influence for the betterment of society. Now is the time, as we look to the future, to build on the foundation our founders gave us ... Let us walk the talk, keep the main thing the main thing — and that is love in Pi Beta Phi.”

Ensuring a Bright Future for Pi Phi

Since its debut at the 2011 Orlando Convention, Halo Heaven has become a special convention tradition giving Pi Phis and friends an opportunity to honor the special sisters in their lives while supporting Pi Beta Phi Foundation. Generous sisters and friends sent 9,279 Halos and raised \$70,018.67 for the Friendship Fund. Every halo sent helped to strengthen our sisterhood and our communities, support our Foundation and ensure a bright future for every Pi Phi.

An anonymous angel donor opened Halo Heaven by sending a virtual halo to every Pi Phi attending convention. “I’m honoring you with this halo today to recognize the inspiration you are to your Pi Phi sisters and with gratitude for everything you’ve given to our Fraternity,” the donor wrote in her message to halo honorees. “I’m also sending a halo to everyone who will experience our first virtual convention together. I hope you will join me in recognizing and honoring the Pi Phi sisters who have inspired you. Together, we can create a ripple effect of pure intention, sharing Pi Phi Love across the miles to our sisters, wherever they may be.”

Thanks to Our Sponsors

GOLDEN LEVEL SPONSORS



SILVER LEVEL SPONSORS



Nicole Kidman Reflects on Empowerment, Confidence and Friendships

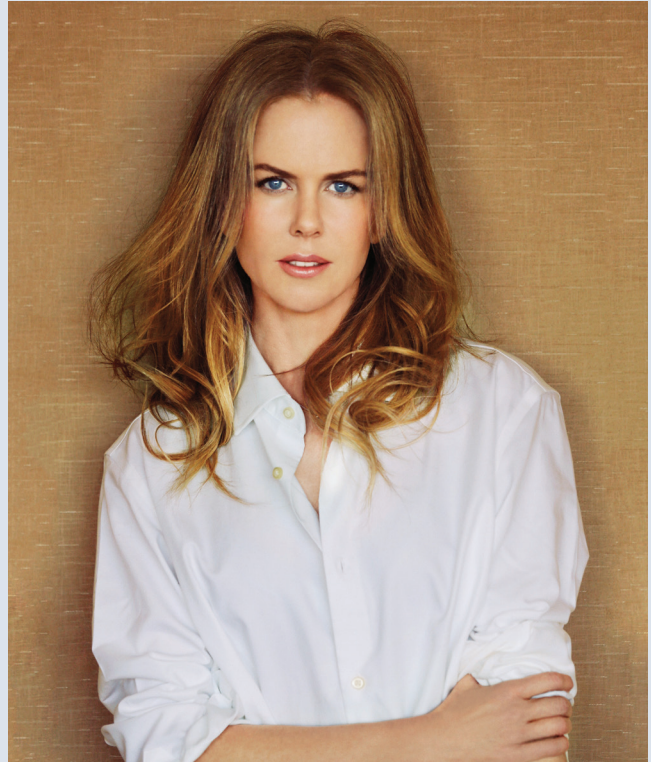
Academy Award, Golden Globe, Screen Actors Guild and Emmy winner Nicole Kidman is an internationally acclaimed actress and producer — and a fierce advocate for women. During Friday night's General Session, Nicole joined Grand President **MARLA NEELLY WULF** for a facilitated conversation, sharing her reflections on friendship, leadership, confidence and inspiring women. Nicole spoke honestly and authentically, drawing from experiences gained through her wide-ranging career as well as her personal life.

Reflecting on her career trajectory, Nicole said she believed she hit her stride after turning 40, noting the energy she felt following the birth of her daughter and the opportunity to expand her skill set into producing. “In my 40s, instead of winding down, I amped up,” she said, reminding attendees it’s not necessary to have life figured out as a young woman. “For women that are at a different stage of their life, the possibilities can be extraordinary.” The additional career successes, coupled with her philanthropic priorities and advocacy work, meant Nicole found an increased need to seek balance in her life. “Sometimes it goes out of balance,” she said. “And, acknowledging that it goes out of balance is one of the ways of then balancing it. Because there’s no sort of even keel, I’ve found ... It’s a constant rebalancing.”

With children as young as 10 and 12, Nicole said being present for her family means being intentional about setting boundaries — a process she still finds difficult. “I’ve learned to say, ‘let me get back to you,’” she said. “Rather than saying an immediate ‘yes,’ the greatest phrase for me is ‘I’m going to sleep on it’ — so I don’t make rash decisions and am not pressured into saying ‘yes.’ That key phrase of ‘let me sleep on it’ is such a good way to just get some time to be able to take a breath and think about something.”

Throughout her career, Nicole has prioritized philanthropic work and being an advocate for other women. She serves as Goodwill Ambassador of the United Nations Development Fund for Women, UN Women. She also has helped raise millions over the years for the Women’s Cancer Program, a world-renowned center for research into the causes, treatment, prevention, and eventual cure of women’s cancer. She attributes these passions to the influence of her mother, a nurse who shared her feminist ideals with Nicole and her sister and modeled selfless service to others. “She raised her two little girls to believe that we could do anything,” Nicole said. “But what she did give me — and I always say this to her — ‘Mama, the deepest thing you gave me was that philanthropic heart.’”

The concept of Sincere Friendships also resonates with Nicole, who like so many Pi Phis finds strength and inspiration in her relationships with other women. She recounted stories of watching her mother take care of friends in times of need, then watching her mother’s friends care for her in turn during her battle with breast cancer and the sudden death of her father. “When my father died, I saw all her friends rally around her, and it was such a shock to our family ... Her friends just came and lifted her up — and I’m talking cooking, taking care of her, taking care of us,” she said. “I think that has the deepest impact, as a child and then a teenager and then a woman, when you see that. That, for me, is true love, true friendship — Sincere Friendship.”





"I mailed my Linked through Friendship postcard to the Pi Phi contact listed and included my email address in hopes we might connect. I was thrilled to receive a prompt response from North Carolina Alpha **ROSALIE VARN RUGGLES**, who at 91 years old was attending her first Pi Phi convention. As we continued to exchange emails, we found we had much in common — we each have two Pi Phi daughters and even share a birthday! Rosie mentioned she saw me in the "Past Grands" convention video and was excited as she felt like she already knew me. I honored her with a virtual halo from Halo Heaven and look forward to continuing our friendship after convention. This was such a fun way to connect Pi Phi sisters, as we will be forever Linked through Friendship!"

— Foundation Trustee **CINDY RICE SVEC**, Kansas Beta

State of the Organization

The State of the Organization report summarized Pi Beta Phi's work during the 2019-2021 biennium, our current position and what we expect to be on the horizon.

Grand President **MARLA NEELLY WULF** presented the report alongside Pi Beta Phi Foundation President **KATHY WAGER SPRAGUE**, Alabama Gamma, and Fraternity Housing Corporation (FHC) Board President **BRENDA BALKUNAS WIRTH**, Wisconsin Alpha.

COMMITMENT TO DIVERSITY, EQUITY AND INCLUSION

This biennium brought the difficult reality that our sisterhood has not been a welcoming place for all members. In June 2020, after hearing from more than 6,000 members, the Fraternity issued a commitment to do better. "We listened to the membership — all voices, all sides and all perspectives — and took action," Marla said. With the support of our newly formed Diversity Equity and Inclusion (DEI) Advisory Committee, we began the hard work, and by the end of 2020, Grand Council had endorsed an organization-wide Commitment to Diversity, Equity and Inclusion.

In February, we offered a progress report and recently completed a DEI Strategic Framework outlining how Pi Phi will achieve this commitment over the next several biennia. These strategies seek to address and impact organizational culture, member development, leadership capacity, policies and procedures and community connections. The next step in the process was to establish new officer positions to implement and support DEI efforts at the chapter and international level. Through convention legislation, delegates voted to establish the positions of Regional Inclusion Specialist, Director Diversity, Equity and Inclusion and, after initially voting down the proposal on June 26, the convention body voted again on July 24 to establish the chapter Vice President Inclusion and Director Community Inclusion roles. Virginia Gamma **BRIANNA HENSON** is serving as the inaugural Director Diversity, Equity and Inclusion.

This past spring, after careful examination and lengthy debate, Grand Council announced plans to change current practices related to the consideration of legacies during recruitment, the requirement for sponsorship for membership and the creation of new chapter and international officer positions to support the Fraternity's Commitment to Diversity, Equity and Inclusion. Originating from years of conversation about the relevance of our practices, some of these conversations became mission critical during the pandemic. "As the Fraternity more firmly expressed our commitment, we

were faced with the reality that our practices may be antiquated, exclusive and create barriers,” Marla explained. “With feedback from many within our organization and the rapidly evolving climate of higher education, Grand Council felt it imperative we ensure we were proposing the best possible solutions for Pi Phi.” At the July 24 continued business session, the convention body voted to remove special considerations afforded to legacies, while also voting to continue the practice of sponsorship for collegiate invitation to membership. Fraternity leaders are proud of the many steps we’ve taken to create a more inclusive, welcoming sisterhood for all, and the work will continue in this biennium and beyond.

COMMUNICATIONS

As a strategic priority, Pi Phi leadership has sought intentional and purposeful communication with the membership. The eight issues of *The Arrow* magazine published during the last two years have focused specifically on topics and issues the Fraternity and our members were tackling. The newly launched Ring Ching Chat conversation series, a comprehensive Pi Phi website and targeted email newsletters help members stay engaged and updated on Fraternity issues and initiatives. “We continually strive to learn what our sisters need from the membership experience and find the best ways to deliver,” said Marla. “We believe we can strengthen the inherent value of Pi Phi sisterhood by seeking feedback from our members and using what we learn to help plan our next steps.”

ORGANIZATIONAL STRUCTURE

Legislation passed at the 2019 Convention shifted officer positions for chapters, chapter Advisors, Regional Teams and even Grand Council. Alumnae and Collegiate Regional Teams were combined to better support a streamlined, more cohesive Pi Beta Phi member experience. During and after the implementation, the structure has received positive response from Fraternity leaders. Interest in chapter officer positions, which were designed to be more manageable and relevant, consistently increased. Grand Council points to this shift in officer organization structure as a key factor in helping us navigate the COVID-19 pandemic.

COLLEGIATE CHAPTER SUPPORT

The Fraternity focuses considerable energy on ensuring a relevant and valuable collegiate member experience. A large team of officers and staff has worked this biennium to evolve our Chapter Support Model. Looking at a series of Chapter Health Indicators, we hope to address issues before they are irreversible.

Congratulations TO OUR AWARD WINNERS

BALFOUR CUP

Missouri Alpha, University of Missouri

PREMIER CLUB

Large Club: Bostonian, Massachusetts, Alumnae Club

Small Club: Bloomfield Hills, Michigan, Alumnae Club

AMY BURNHAM ONKEN AWARD FOR
OUTSTANDING SCHOLARSHIP AND CAMPUS
AND COMMUNITY LEADERSHIP
GEORGIA KRALOVICH, Ohio Lambda

CAROL INGE WARREN AWARD
FOR OUTSTANDING AAC ADVISOR
RUTH-ANN ROBERTS, Iowa Beta

CHAPTER SERVICE AWARD
FOR OUTSTANDING SERVANT LEADERSHIP
ISABELLA ESPARZA, Louisiana Beta
MORGAN WALTHALL, Texas Epsilon

EMMA HARPER TURNER
LEADERSHIP AWARD
SUSAN JONNATTI MAXWELL, Pennsylvania Zeta

EVELYN PETERS KYLE ANGEL AWARD
FOR CLUB SERVICE
KELLEE CASEBEER, Oregon Gamma

JEAN WIRTHS SCOTT LEADERSHIP AWARD
FOR OUTSTANDING CHANGE LEADERSHIP
SAMANTHA GILDEA, Florida Delta

SILVER SLIPPER AWARD – EXCELLENCE OF
A CHAPTER VICE PRESIDENT OF FINANCE
ALLISON POWELL, South Carolina Alpha

YOUNG ALUMNA ACHIEVEMENT AWARD
JENNA TROUP PHILLIPS, Pennsylvania Theta

MAY LANSFIELD KELLER AWARD
FOR PHILANTHROPIC LEADERSHIP
SUSAN CRANE KYLE, Indiana Beta

SERVICE IN SISTERHOOD “SIS” AWARD
LEISA EBELING LOWREY, Ohio Eta

DOROTHY WEAVER MORGAN AWARD
FOR FRATERNITY LOYALTY
JULI HOLMES WILLEMAN, Iowa Beta

Convention 2021 by The Numbers

2,052
REGISTRANTS

134
CHAPTERS

126
ALUMNAE CLUBS
REPRESENTED

1,472
ALUMNAE

555
COLLEGIANS

37
ATTENDEES FROM
CALIFORNIA ETA
THE MOST FROM
ONE CHAPTER

9,279
VIRTUAL HALOS
SENT THROUGH
HALO HEAVEN

91
CONVENTION
DANGLES
ORDERED

12
COUNTRIES
REPRESENTED
BELGIUM, CANADA, CHILE,
COLOMBIA, NORWAY,
SINGAPORE, SPAIN,
THE BAHAMAS,
THE NETHERLANDS,
THE UNITED KINGDOM,
THE UNITED STATES
AND VIETNAM

14,148
COLLECTIVE
"RINGS" AND
"CHINGS" SUNG
DURING THE
COOKIE SHINE
393 ATTENDEES

"Our member development program, *Leading with Values*®, received a comprehensive update to help participants create authentic connections by engaging in open and honest conversations," Marla shared.

This biennium, at nearly 60 college campuses across North America, grassroots "Abolish Greek Life" movements led to an increase in student activism. More than 30 of these campuses were home to Pi Beta Phi chapters. Most of these efforts asked whether the fraternity/sorority experience can transform into the diverse, equitable and inclusive community today's students expect. Pi Phi leaders sought to understand what changes collegians want to see and began working thoughtfully to figure out how to demonstrate change was possible.

ALUMNAE CLUB SUPPORT

In support of a more positive, more simplified and less restrictive alumnae club experience, expectations of alumnae clubs changed with the elimination of the Alumnae Club Review. "Today, we focus on celebrating clubs' successes in being relevant to their members and communities," Marla said. The decision to simplify aided the Fraternity in navigating a year in which complicated expectations would have been even more cumbersome. With this simplified model, we saw clubs and members continue to embody their Lifelong Commitment to Pi Phi and to each other.

Right: Alabama Alpha Chapter President **LAUREN HAYES** attending Convention 2021 as her chapter's voting delegate.

NAVIGATING THE PANDEMIC

Without a doubt, the impact of COVID-19 on our Fraternity was immediate and will be long felt. In total, 94 of Pi Phi's chapters reported a confirmed case of COVID-19. Fourteen chapter facilities underwent full house quarantines due to community or campus mandates, some more than once.

"As we prepared for students to return to campus this past fall, the Fraternity demonstrated agility," said Marla. The Fraternity's recruitment team accomplished the amazing feat of shifting Pi Phi's recruitment efforts to virtual platforms and developed a comprehensive Virtual Recruitment Guide in a matter of days. To retain collegiate members enrolled in fully online course loads,





Members of the 2019-2021 Grand Council in the Pi Beta Phi archives at Headquarters during convention weekend. From left, Montana Alpha **JAMIE FEIST DANIELS**, Kansas Beta **MARLA NEELLY WULF**, Colorado Alpha **LISA GAMEL SCOTT**, South Dakota Alpha **AMY LORENZEN SOUTHERLAND**, and Illinois Zeta **ALISON VEIT HEAFITZ**.

the Fraternity developed Remote Student Status (RSS). The more than 2,500 collegians on RSS kept most chapter membership privileges such as a voice and vote in chapter business and virtual participation in chapter programming while reducing their financial responsibilities and obligation to be physically present.

Pi Phi has and will continue to address the large revenue losses which are anticipated for chapters, Chapter House Corporations, FHC, our Foundation and the Fraternity as a result of the pandemic. The Fraternity has opened a COVID Bridge loan program to chapters as support for short-term operations. The thoughtful management of Fraternity financial resources in years past has allowed our sisterhood to carefully respond.

PI BETA PHI FOUNDATION

Just a few months after we celebrated the success of the SHINE THROUGH campaign, the world changed. Immediately, our Foundation saw a need within the membership from those most affected by the pandemic. Gifts to our Foundation enabled support to sisters experiencing financial crises as a direct result of COVID-19.

“We realized that with chapters and alumnae clubs cancelling plans, chapter and club fundraising events would cease — and the impact would be significant,” said Kathy. While many loyal donors have increased their giving to help meet the ongoing need, the decrease in overall Friendship Fund support has continued into the current fiscal year. Despite the challenges, our Foundation



Left: Mississippi Alpha **TABITHA EPPERSON-GRAHAM** and her dog, Toto, watching Friday's Opening General Session.



Illinois Epsilon
GINA TABACHKI
tuning into convention
from Two Rivers, Alaska.

has worked hard to steward the dollars donors have entrusted to us and to make the greatest impact possible. In addition to fulfilling our Emma Harper Turner Fund and scholarship programs, the Foundation was able to provide full funding for all Read > Lead > Achieve® initiatives thanks to our literacy endowments and gifts to The Literacy Fund — including the special crisis grant to First Book® at the start of the pandemic.

FRATERNITY HOUSING CORPORATION

Our Fraternity continues to see great need within the area of housing. Nearly 80% of our chapters manage beds for members, and the average Pi Beta Phi facility is more than 100 years old. “Students expect living environments to be competitive with the best residence halls and apartments,” Brenda shared. “In addition, our facilities need to be safe, well maintained and affordable.”

Navigating campus closures, and then returns to campus during a pandemic, was a significant feat. FHC volunteers and staff supported Chapter House Corporations (CHCs) who own and manage their own facilities as well as the facilities FHC owns and manages. The support and guidance FHC was able to offer prevented several possible challenges for the Fraternity. Outside of the pandemic, work has continued to strengthen Pi Beta Phi housing. This past biennium, 10 chapters transitioned to FHC-owned and managed facilities. Today, FHC manages property for 54 Pi Beta Phi chapters.

Watch the complete State of the Organization report at pibetaphi.org/soto. ←

2020 Carolyn Helman Lichtenberg Crest Award Winners

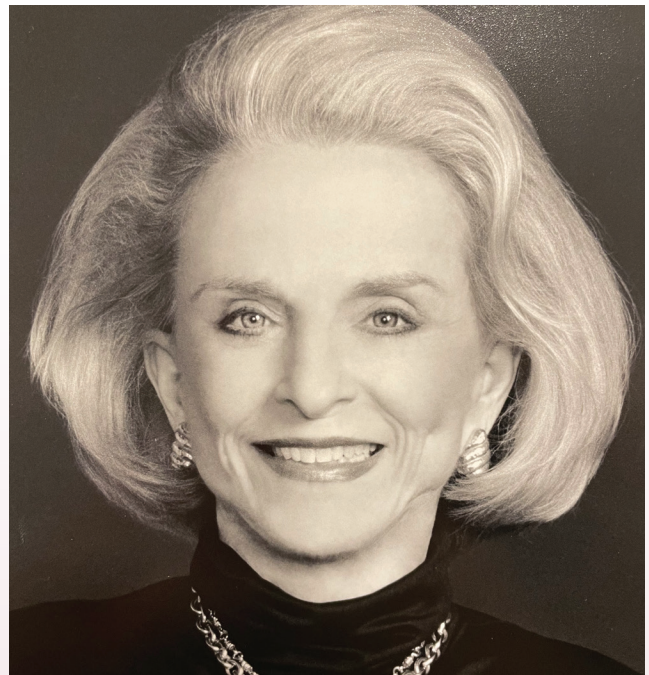
The Crest Award is given in honor of Ohio Alpha **CAROLYN HELMAN LICHTENBERG**, who served Pi Beta Phi as Grand President from 1985 to 1991. Carolyn was a visionary leader for Pi Beta Phi, and her efforts can still be felt today in the achievements of our members. This award recognizes other distinguished alumnae who have positively impacted their communities through their professional success and dedication to serving others.

CAROLYN HELMAN LICHTENBERG CREST AWARD FOR COMMUNITY SERVICE



EILEEN CONWAY SEITZ, DDS, ILLINOIS ZETA

In 2016, Eileen sold her dental practice in Nashville, Tennessee, to create Giving Smiles - a non-profit seeking to improve access to dental services for those with limited resources or other barriers to care. Giving Smiles began as a mobile clinic to serve patients who may have difficulty traveling to the dentist. In January 2020, Eileen opened a brick-and-mortar clinic serving five counties from Middle Tennessee to the Alabama border. Her dental clinic is the only clinic in the area providing free or reduced-cost services without public aid. Since launching Giving Smiles, Eileen has treated more than 800 patients, providing hundreds of hours of service and thousands of dollars in free dentistry.



NANCY MCMILLAN DEDMAN, TEXAS BETA

Twenty-five years ago, Nancy established The Dedman Foundation to continue her family's legacy of giving to higher education, public charities, civic organizations and medical institutions. Nancy and her family have made significant contributions to Southern Methodist University, Florida State University and the University of Texas (UT). At UT Southwestern Medical Center, Nancy established the Dedman Family Distinguished Chair in Neurologic Disease and the Dedman Family Endowed Program for Scholars in Clinical Care. Nancy has received several awards for her humanitarianism and has served on the Board of Directors at Baylor Healthcare System and the Dallas Museum of Art.

CAROLYN HELMAN LICHTENBERG CREST AWARD FOR PROFESSIONAL ACHIEVEMENT



LESLIE PARIS, OKLAHOMA BETA

Leslie is the Senior Vice President and Director Community and Employee Engagement at Bank of Oklahoma Financial (BOKF). As a 35-year veteran of BOKF, Leslie directs the company's community impact projects which have resulted in more than \$30 million supporting United Way campaigns, 300,000 books for children in need, and thousands of volunteer hours for the company's Learn for Life financial education program promoting basic financial skills to better prepare individuals to lead successful and productive lives. Leslie also serves as the Director of the BOKF Foundation, which has provided more than \$90 million to hundreds of nonprofit organizations over the past 20 years.



BARBARA TRAVIS OSGOOD, PH.D., NEW YORK DELTA

Barbara left her professional mark on the United States Department of Agriculture (USDA) as the first sociologist hired by the Soil Conservation Service. From 1980-2002, Barbara held several positions within the USDA. She managed a \$1 million nationwide study of public attitudes toward conservation, represented the Under Secretary of Agriculture for Natural Resources and Environment at the Environmental Protection Agency, and worked with field office staff on strategies for working with farmers from minority and low-income backgrounds, understanding different ethnic groups, and marketing conservation practices to farmers, ranchers and land-users.



**CHARLOTTE “CHAR” HALSEMA OTTINGER,
INDIANA DELTA**

Char is a Registered Nurse (RN), American Sign Language (ASL) Interpreter and Adjunct Instructor for the ASL/English Interpreter Program at Indiana University-Purdue University Indianapolis. She pursued a master’s degree at Gallaudet University as part of the 5% of hearing students admitted to the historic institution. After serving students in the Illinois School for the Deaf and the Indiana School for the Deaf, Char became an RN and eventually transitioned to a hospital interpreter. Her work extended beyond interpreting to educate doctors, nurses and medical personnel on laws regarding interpreters in healthcare and cultural norms in the deaf community. In addition to educating hospital staff, Char also counseled deaf patients to improve their health literacy and to increase their autonomy in healthcare settings.



**JESSICA STRAUSS,
FLORIDA ALPHA**

With 15 years of teaching experience, Jessica’s work as an educator goes far beyond the classroom. She regularly collaborates with educators across the United States to share space education lessons and presented at the 2018, 2019 and 2020 Space Exploration Educators Conference in partnership with NASA specialists and crew members at the Houston Space Center. Jessica is recognized by her peers as an outstanding educator through awards such as Teacher of the Year and the Ida S Baker Diversity Educator of the Year. She manages several extracurriculars for her school and created U Go Girl — a program which helps girls in third through fifth grade prepare for a 5K while learning about leadership skills, anti-bullying, body image and friendship. ◀

2021 Members of Distinction

Pi Beta Phi's Member of Distinction Award honors Pi Phi sisters who have achieved success and recognition within their professions and bring great credit to the Fraternity. The award is only presented biennially at convention.

The 2021 Member of Distinction Award recipients share the common thread of making a difference in our world by empowering others. Whether blazing trails for future generations of women, working to create more equitable communities or ensuring the protection of human rights around the globe, these Pi Phis knew they could make this world a better place for others — and were bold enough to take action. Their achievements have helped to better our society and pave the way for emerging women leaders by demonstrating what's possible.

PATRICIA "TRISH" BOSTROM, WASHINGTON ALPHA

Trish is a pioneer in women's athletics and has made a tremendous impact on equality for women athletes. In 1971, as a member of the women's tennis team at the University of Washington (UW), Trish filed a legal challenge against the university citing blatant discrimination in the school's treatment of male athletes compared to their female counterparts. Trish sought the opportunity to play tennis for the UW men's team until equitable athletic programs could be developed for women. After a pre-trial hearing, the university agreed to both of her requests — a landmark moment for women's athletics before the enactment of Title IX protections.

After college, Trish embarked on a successful eight-year career as an international touring tennis professional, competing in more than 80 countries and appearing at Wimbledon, the U.S. Open, the French Open and the Australian Open. During the course of her career, she was ranked fifth in the world as a doubles player and 35th in singles. After retiring from professional tennis, Trish earned her juris doctorate degree from Southern Methodist University Law School and currently practices law in Seattle. A member of numerous sports halls of fame and nonprofit boards, Trish was honored by USA Today as one of the top ten Women of the Century for the state of Washington in recognition of her fight for gender equality in athletics.

Trish believes women must continue to speak out in the face of injustice — a process that begins with mentoring younger generations. "Women who have lived through inequity need to mentor younger women," she said. "We as women need to help other women reach their goals. We need to speak out, mentor girls and encourage them to have courage. I was young, but something deep inside me told me what I saw wasn't right or just. When you have those feelings, speak out."

JENNIFER BURDICK, WISCONSIN BETA (AWARDED POSTHUMOUSLY)

Jennifer lived a life in service to others, advocating for equality and civil rights. The daughter of U.S. Rep. and Sen. Quentin N. Burdick, Jennifer was inspired to action early in her life. At age 14, she began co-managing her father's political campaigns after the death of her mother. She participated in the 1963 "I Have a Dream" March on Washington with Dr. Martin Luther King, Jr., and marched alongside the late U.S. Rep. John Lewis on the Edmund Pettus Bridge in Selma, Alabama, in 1965. She graduated from Beloit College with a degree in anthropology and sociology in 1966.

Jennifer worked as an investigator for the U.S. Equal Employment Opportunity Commission in Baltimore before her appointment as Executive Director of the Maryland Commission on Human Relations. In this role, Jennifer enforced laws preventing discrimination, helped to educate Maryland citizens on their rights and implemented programs improving civil and human rights across the state. She served on the Baltimore City Ethics Board and the board of the American Civil Liberties Union of Maryland. An entrepreneur as well as a civil servant, Jennifer founded a human resources consulting company and owned a children's art education business. She was a passionate supporter of the arts throughout her life and volunteered with several local arts organizations, including the Maryland Film Festival, the Chesapeake Shakespeare Theatre and the Baltimore Museum of Art. In recognition of Jennifer's accomplishments and community leadership, the Maryland Daily Record chose her as one of Maryland's Top 100 Women three times and also named her to its Circle of Excellence.

In October 2020, Jennifer died due to complications of ALS. She is survived by family members including three children, two sisters and four grandchildren. She found special meaning in a quote from Jimi Hendrix: "When the power of love overcomes the love of power, then the world will know peace."



From left: **PATRICIA "TRISH" BOSTROM**, Washington Alpha, **JENNIFER BURDICK**, Wisconsin Beta, and **DAVINA P. DURGANA**, Ph.D., D.C. Alpha

DAVINA P. DURGANA, PH.D., D.C. ALPHA

Davina is an award-winning international human rights statistician and professor. As shared in her Spring 2021 profile in *The Arrow*, Davina's statistical models are used by governments, corporations and nonprofits around the globe to enact change and better protect people at risk of exploitation. She serves as Senior Multilateral Engagement Advisor for Minderoo Foundation, one of the largest philanthropies in the Asia-Pacific region, leading Americas Policy and Quantitative Research for the organization. In this role, she co-authored the Global Slavery Index for Minderoo's Walk Free initiative.

Davina has been widely recognized for her work in statistical modeling, human security theory and human trafficking. She has authored more than 28 publications, delivered over 100 invited presentations and keynote addresses and is a member of more than a dozen international nonprofit and professional boards. Her work has taken her to more than 60 countries and every continent — including Antarctica. In addition to her role

with Minderoo Foundation, Davina is a visiting professor at Oxford University and serves on faculty at the National Defense University in Washington, D.C.

A vocal advocate for women's leadership and women in STEM fields, Davina recognizes the inherent power and strength found in networks of confident, supportive women. "We can't rise alone, and inclusion has to be a movement," she said. "We have an immense power and responsibility to promote other women. When we're the lucky ones who get in, we need to bring others with us. This is where we can be each other's champions — identify people who can do something well and deserve the opportunity and give them the chance." ◀

Meet Grand Council

Pi Beta Phi is pleased to introduce the seven women serving on Grand Council for the 2021-2023 biennium. These women support the mission, vision and strategic direction of Pi Beta Phi. We look forward to all they will accomplish for our sisterhood! To learn more about our Grand Council members, visit pibetaphi.org/blog.

GRAND PRESIDENT LISA GAMEL SCOTT, COLORADO ALPHA



WHY DID YOU WANT TO SERVE ON GRAND COUNCIL?

My professional skill set in finance and fundraising took me to Pi Beta Phi Foundation Board, then led me to the Fraternity Housing Corporation (FHC) board. These 16 years of service paved a path that led me to Grand Council.

IS THERE A MEMBER OF PI BETA PHI WHO INSPIRES YOU?

Former Fraternity and FHC Executive Director **JULI HOLMES WILLEMEN**, Iowa Beta. I admire her confidence, her ability to bring others along and her passion for the Fraternity's well-being. Pi Beta Phi wouldn't be where we are today without her guidance and vision of service.

MOST PEOPLE DON'T KNOW, BUT ...

I love to sew. I have served as the 4-H Leader for the Clothing Construction Project for 12 years.

GRAND VICE PRESIDENT COLLEGIANS MELISSA MALONE COLVIN, VIRGINIA THETA



WHAT IS SOMETHING YOU ARE LOOKING FORWARD TO DURING YOUR TIME ON GRAND COUNCIL?

I look forward to learning from and harnessing the knowledge, skills, experience and connection that our collegiate and alumnae volunteers bring to our organization.

IS THERE A MEMBER OF PI BETA PHI WHO INSPIRES YOU?

The biggest blessing of my membership in Pi Beta Phi has been the friendships and connections I have made along the way; having a community that empowers one another and lifts each other up no matter the circumstance is inspiring.

MY FAVORITE BOOK IS...

"The Little Engine That Could" by Watty Piper.

GRAND VICE PRESIDENT MEMBER EXPERIENCE JAMIE FEIST DANIELS, MONTANA ALPHA



WHY DID YOU WANT TO SERVE ON GRAND COUNCIL?

To help lay the groundwork for the future success of Pi Phi. We have work to do to remain relevant, nimble and forward-thinking.

PI BETA PHI HAS TAUGHT ME...

It's a small world and we're all connected. I've met Pi Phis around the globe, at work and in the grocery store. I love the immediate connection and knowing there might be another Pi Phi around the next corner.

WHAT DO YOU CONSIDER TO BE THE MOST VALUABLE THING YOU OWN?

Our camper trailer — I love the way it brings my family together, the adventures we have and the many places we travel. Spending time as a family brings me great joy.

GRAND VICE PRESIDENT FINANCE/HOUSING EMORY MCGINNIS EISON, MISSISSIPPI BETA



WHAT DO YOU HOPE TO ACCOMPLISH THIS BIENNIUM?

I hope to demonstrate that the fraternity/sorority experience is still relevant for all members. Our members represent a wide range of experiences and beliefs, who all have a place in Pi Phi.

WHAT IS YOUR FAVORITE PI PHI MEMORY?

One of my favorite Pi Phi memories is participating in our first virtual Initiation. To assist with the ceremony and see the faces of all our new sisters will be a memory that lasts a lifetime!

WHAT IS THE BEST ADVICE YOU EVER RECEIVED?

An emergency on someone else's part does not necessitate an emergency on your part.

GRAND VICE PRESIDENT INCLUSION/COMMUNITY RELATIONS AMY LORENZEN SOUTHERLAND, SOUTH DAKOTA ALPHA



WHY DID YOU WANT TO SERVE ON GRAND COUNCIL?

This will be my third term on Grand Council, and it is simple — I truly believe in the sorority experience. Pi Phi has given so much to me, and I want others to experience our sisterhood.

WHAT DO YOU CONSIDER TO BE THE MOST VALUABLE THING YOU OWN?

My husband and I collect concert posters from live concerts we've seen over the years. Many have value as they were designed by well-known artists, but they all have sentimental value to us. They are beautiful reminders of nights we've had with music we love.

WHAT IS THE BEST ADVICE YOU EVER RECEIVED?

Always wear sunscreen.

GRAND VICE PRESIDENT FRATERNITY GROWTH ANA MANCEBO MILLER, TEXAS BETA



WHAT DO YOU HOPE TO ACCOMPLISH THIS BIENNIUM?

I hope to hear the voices of our Fraternity's generations and position Pi Phi so that we can continue to be proud of the organization. I know together we can build a strong future.

WHAT IS YOUR FAVORITE QUOTE?

The song "I'm Still Standing" is probably my anthem for life. Anyone who's driven or ambitious is going to be challenged and experience failures, some big and some small. But success is not final, and failure is not fatal. Having the courage to continue makes all the difference.

PI BETA PHI HAS TAUGHT ME...

Compassion is a mark of confidence.

GRAND VICE PRESIDENT ALUMNAE GREER HORNE, VIRGINIA ZETA



WHAT IS SOMETHING YOU ARE LOOKING FORWARD TO DURING YOUR TIME ON GRAND COUNCIL?

I am looking forward to meeting even more Pi Phis across the U.S. and Canada - hearing their thoughts on how we can continue to meet the needs of our members for the next 150 years.

WHAT IS THE BEST ADVICE YOU EVER RECEIVED?

When I was a kid my mom would always say, "The worst answer you will ever receive is 'no,' and as long as you are prepared for that, then you might as well ask the question."

MOST PEOPLE DON'T KNOW BUT ...

I go by my middle name. ←

Modeling the Way

After twenty years as a leader at Pi Beta Phi Headquarters (HQ), Iowa Beta **JULI HOLMES WILLEMAN** officially retired from her role as Executive Director of the Fraternity and Fraternity Housing Corporation (FHC) in May 2021. Juli likened her responsibility to Pi Phi to serving as its guardian, while leading our sisterhood through historic growth and change to a position of strength. Yet one of the greatest hallmarks of her legacy may be her commitment to modeling the way through servant leadership, using her gift for strategic vision, calling her team members to greatness and embodying Pi Phi's core values.

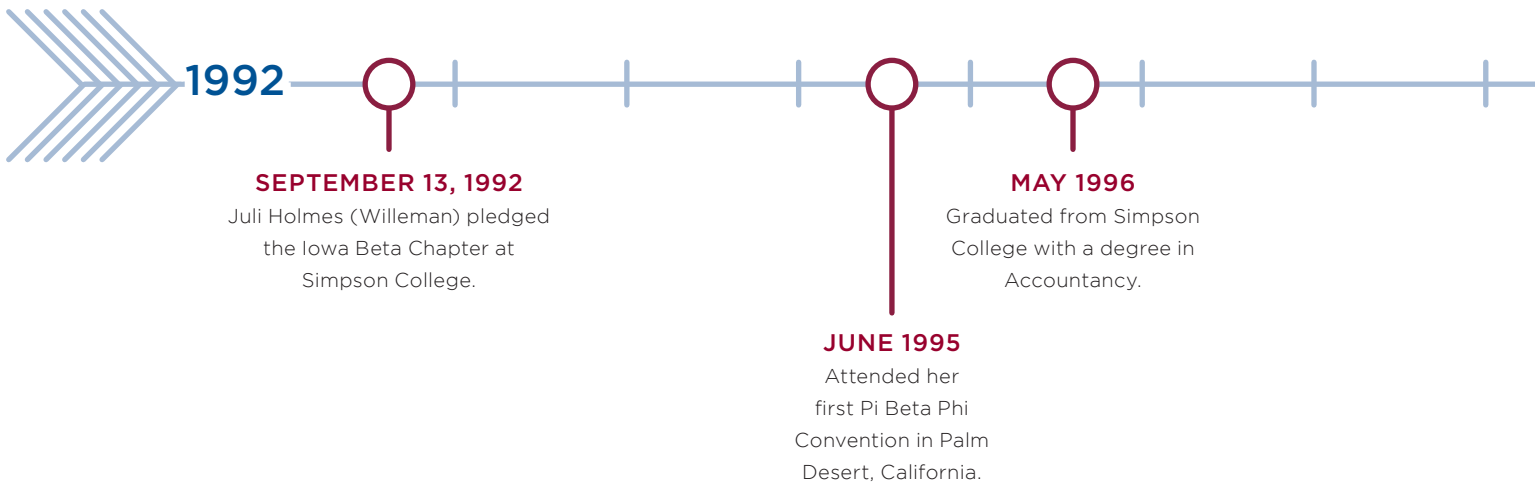
"I cannot imagine being on this journey without her," said past Grand President **MARLA NEELLY WULF**, Kansas Beta. "Juli is present in every conversation, listening intently and always seeking to understand — asking incredible questions and considering the risk and the reward. She is a problem solver, a servant leader, envisioning and inspiring. She strives to turn challenges into opportunities and calls us to do that as well."

Juli began her career as a certified public accountant. She joined Pi Phi HQ as the Fraternity controller in 2001 and became Executive Director (ED) in 2006 — a position she described as her dream job. "Words will never fully express the deep appreciation and love I have for this organization and all the relationships I've been blessed to make along the way," Juli said as she announced her retirement. "It's been an amazing journey, and I know this is not an end but rather an ever-evolving path of lifelong

membership. It is my sincere hope I have served the organization, the people and ideals well."

Past Grand President **EMILY RUSSELL TARR**, Texas Beta, hired Juli for the ED role. "She was willing to accept the challenge head on," Emily said. "To be a premier organization has always been at the forefront of her thinking. By raising the level of strategy among HQ leaders and staff members, Juli made it possible for HQ to take on more work. She trusted the team with her vision and Grand Council's vision."

Emily said Juli's knack for breaking huge projects into manageable pieces paved the way for Pi Phi's success and advancement during Juli's tenure. In that time, the organization went from a volunteer-driven organization to a staff-driven one using a board governance model. The HQ staff more than tripled in size to better support members, chapters and alumnae clubs. Our signature member development program, *Leading with Values*®, was created and has since become a key part of Pi Phi's identity. Pi Phi launched a longstanding literacy partnership with First Book®, sharing a lifelong love of reading with millions of children and offering Pi Phi members a way to make a personal impact in their communities. In addition, Juli's foresight and expertise in financial management were critical in establishing FHC in 2008, which today provides a once-in-a-lifetime housing experience for the 4,300 collegians who live in Pi Phi facilities each year.



“Juli was integral in building the FHC team and inviting new chapters to join Pi Phi’s premier housing experience,” said FHC Board President **BRENDA BALKUNAS WIRTH**, Wisconsin Alpha. “She has seen our board through changes in leadership, houses being built and closed, and numerous facility renovations, always ensuring we made the best possible financial decisions.”

Juli believed in building empowered leaders and leading by example, building a supportive culture among Pi Phi volunteers and staff members. “I’m convinced the term ‘servant leader’ was coined to describe Juli,” said past Grand President **MARY LOY TATUM**, Oklahoma Beta. “She is always thinking of how actions will affect people — our members. She met every challenge with positive energy.” That characteristic energy and passion for the Fraternity’s work inspired and elevated those who worked alongside her. “Juli helps leaders understand the ‘why,’ which provides greater meaning in our work and shared vision,” said past Grand President **PAULA PACE SHEPHERD**, Texas Epsilon. “Her ability to maintain a high level of responsibility is an inspiration and challenge to those she leads. She models and encourages systematic and creative thinking applied to problem solving and decision making, empowering those around her to strive to do their best work.”

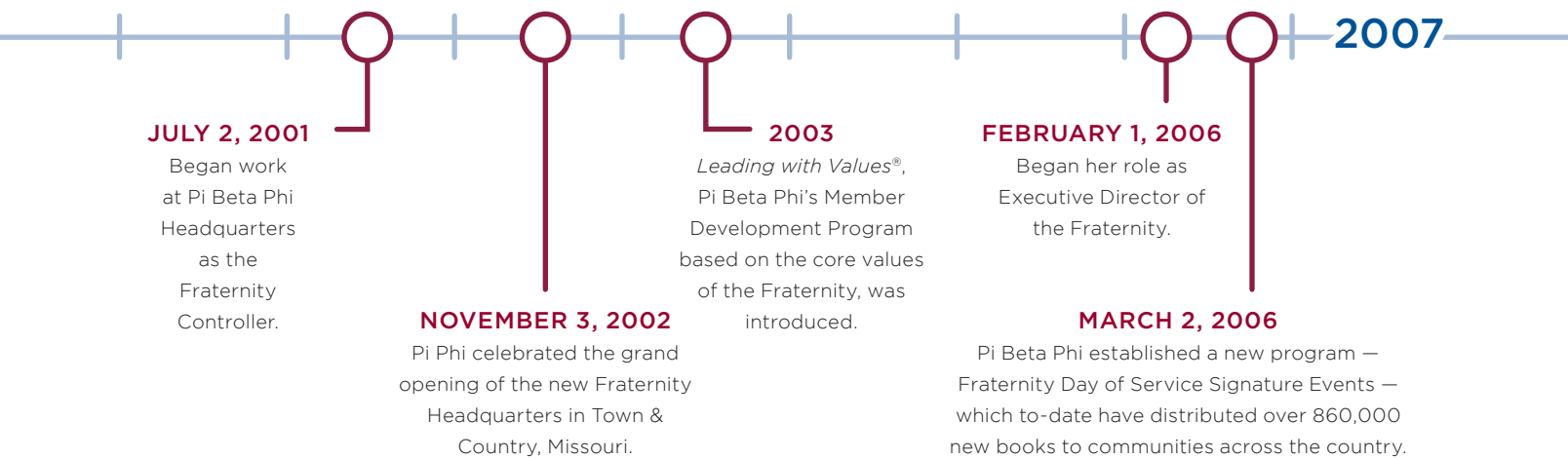
Staff members across HQ felt that same sense of empowerment in their everyday interactions with Juli. Michelle Moser worked with Juli for nearly 19 years as Accounts Receivable Specialist and Event and Meeting Coordinator. Michelle felt Juli’s example of accountability and passion, coupled with personal investment in her success, directly contributed to a positive working environment and drove employee engagement. “Having



Juli with past Grand Council member **CAROL INGE WARREN**, North Carolina Beta, at Convention 2019.

Juli as a leader has empowered me to give my all in everything I do and to never forget to have compassion for others,” she said. “Juli was always willing to listen, give advice, build confidence and remind you of your untapped potential.”

For Associate Executive Director **ASHLEY HALLOWELL KARTH**, Illinois Eta, working for Juli was more than a job — it was a relationship with far-reaching impact. “Time and time again, she has called me to greatness by seeing strengths in me I wasn’t aware of, while modeling honesty and candor along the way,” she said. Ashley emphasized



“I’VE ALWAYS LOVED THAT JULI SHARES REAL EMOTION — LAUGHTER AND TEARS. SHE HAS ALWAYS SHOWN US THAT YOU CAN BE A STRONG WOMAN, A CONFIDENT LEADER, YET YOU CAN STILL SHOW YOUR EMOTIONS. **SHE HAS LED US WITH HER WHOLE HEART EVERY STEP OF THE WAY.**”

- GRAND VICE PRESIDENT INCLUSION/COMMUNITY RELATIONS **AMY LORENZEN SOUTHERLAND**, SOUTH DAKOTA ALPHA

Juli’s commitment to surrounding herself with smart, capable people, then trusting those team members to carry out the work — a philosophy Ashley now employs as an HQ leader. “She encourages those around her to dream, make decisions, problem solve and work together to come up with the best outcomes,” Ashley said. “She put a lot of trust in me, which is something I try to do for my team. Being trusted to take on projects, lead teams and work with others is how we learn and grow.” Ashley noted Juli’s habit of tackling even the most difficult problems with grace, calmness and confidence, a sentiment echoed by Fraternity Historian and Archivist **FRAN DISIMONE BECQUE**, New York Alpha. “Whether she had a very young baby with her at convention or she was juggling 1,867 balls in the air at once, you would never know it,” Fran reflected. “My visits to HQ were always made better when Juli would stop in the Archives to say hello or catch me as I was walking through the building.”

Juli’s leadership extended beyond her more immediate circles of staff members and International Officers. She is seen as an experienced and respected leader in the fraternal industry, having served as President of the Fraternity Executives Association and using her influence and insight to drive needed change. “Juli strives to make sure the right people are at the table for the right conversations,” said Paula. “She is the Fraternity’s biggest advocate and embodies the values of our organization.”

2007

2007

Pi Phi began a new partnership with First Book® to increase Pi Phi’s capacity to distribute books and resources to children and communities.

2008

The Fraternity Housing Corporation (FHC) was established to ensure members receive a once-in-a-lifetime opportunity to live, learn and grow together.

2011

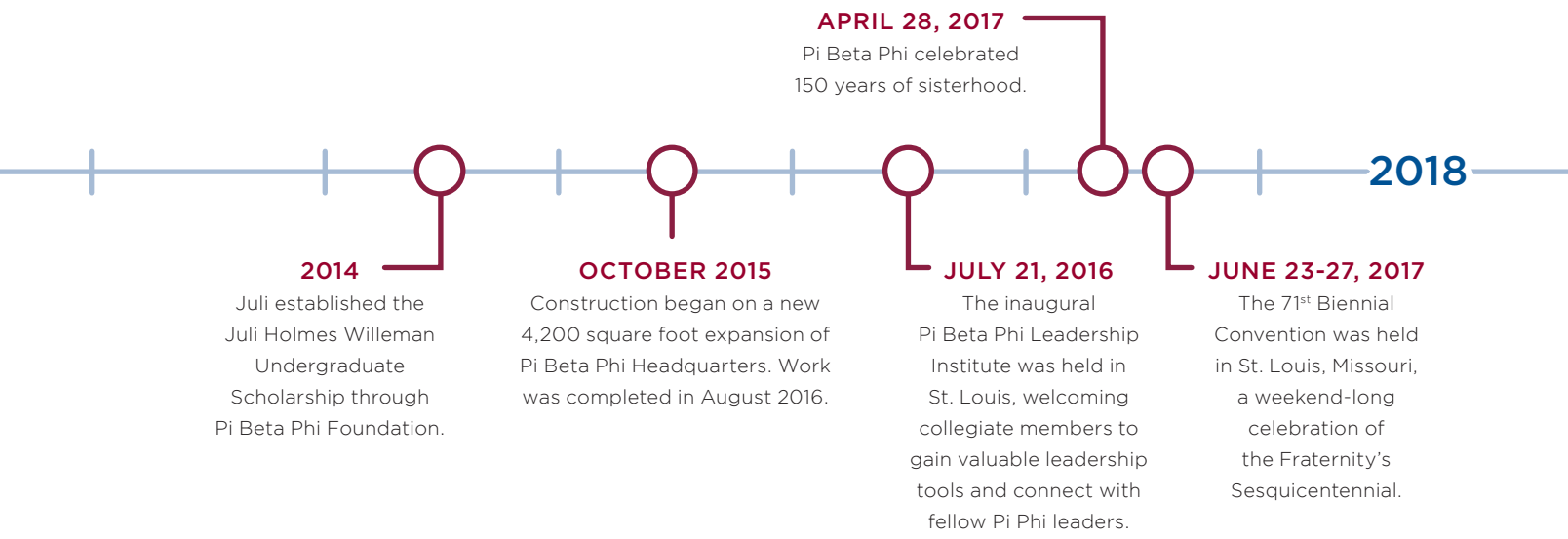
Pi Beta Phi unveiled a new literacy platform, Read > Lead > Achieve, and new literacy vision: Pi Beta Phi leads the way to a more literate society.



From left, Grand Council members **ALISON VEIT HEAFITZ, DIANE BIELMAN, CARA BALLARD SUTCLIFFE, JULIE CARNEY, MARLA NEELLY WULF, PAULA PACE SHEPHERD, RAE WOHLHUETER MAIER** and Executive Director **JULI HOLMES WILLEMAN** at the HQ addition groundbreaking in 2015.

Her commitment to living those values inspired Juli to model the way as a longtime donor to Pi Beta Phi Foundation, making a difference for members across our sisterhood. “If anyone has represented our value of Philanthropic Service to Others better than Juli, I don’t know her yet,” said past Foundation President **KATHY WAGER SPRAGUE**, Alabama Gamma. Juli’s belief in the importance of developing confident women leaders

led her and her family to endow the Juli Holmes Willeman Undergraduate Scholarship with our Foundation, awarded each year to help a Pi Phi sister complete her education. And, when the time came to support the landmark **SHINE THROUGH** campaign to sustain Pi Beta Phi, Juli’s gift was yet another example of her characteristic intentionality and care for our sisterhood. “Juli and [her husband] Chris made an incredibly thoughtful investment by mirroring





Juli meeting convention goers at the 2019 Convention in Washington D.C.

the Fraternity’s gift and supporting each area of the campaign — operations, scholarships, leadership, literacy and housing,” Kathy said.

Juli’s signature ability to plan for the future — while skillfully navigating the present and building upon the past — defined her contributions to Pi Phi during the

past twenty years. As new Executive Director Shawn Eagleburger stepped into the role, he emphasized how Pi Phi is positioned for continued growth and engagement. “I’ve learned there are few things as powerful in this world as Pi Phi Pride,” Shawn said. “Truly, pride in this organization is an undeniable, most-valuable commodity. When we’ve been able to harness Pi Phi Pride, incredible

JUNE 30, 2019

Pi Beta Phi Foundation celebrated the success of the **SHINE THROUGH** campaign — the largest philanthropic endeavor ever assumed by Pi Phi and the largest fundraising effort in National Panhellenic Conference history at the time — raising more than \$32 million.

2018



AUGUST 1, 2018

Juli took on her new role as Executive Director of both the Fraternity and FHC.



JUNE 28 - JULY 2, 2019

Juli attended the Washington, D.C. Convention — her final Pi Beta Phi convention as Executive Director.

“THERE ARE **TWO GREAT LESSONS THAT EXEMPLIFY JULI’S LEADERSHIP STYLE**. FIRST, PI PHI (AND, REALLY, LIFE) IS NOT A LADDER — IT’S A JUNGLE GYM. YOU DON’T HAVE TO TAKE A LINEAR PATH FROM A TO Z. SECOND, YOU DON’T ALWAYS HAVE TO TAP THE ‘EXPECTED’ PEOPLE TO PERFORM TASKS. IT ALLOWS PEOPLE TO GROW AND SHINE IN SOMETIMES UNEXPECTED WAYS.”

— EVENT AND LITERACY DIRECTOR **KATEY NEWELL HOBBS**, MISSOURI ALPHA

things have happened: one million books for children, \$32 million for the future of Pi Phi, successful new chapters, record-breaking convention attendance, surviving a pandemic ... and the list goes on. If I have one clear goal today through the end of my time as Executive Director, it’s to see continued expansion of Pi Phi Pride.”

Shawn and Juli shared their thoughts on Pi Phi’s evolution during the past two decades, and their confidence in a bright future for the organization, in the May 2021 Ring Ching Chat. Reflecting on the milestones of her tenure, Juli named some unforgettable moments: planning and

celebrating the Fraternity’s 150th anniversary, continuing to advance Pi Phi’s literacy work through Fraternity Day of Service and taking the leap of faith to start FHC, to name a few. She also seized one more opportunity to help her team, and her sisterhood, shine. “There are so many highlights — I could go on and on,” she said. “I’m so proud of Pi Phi and all the great work. I think that’s a testament to the people doing the work and the nimbleness with which they approach it, and that’s something I don’t see changing.” ←

JUNE 1, 2020

Pi Beta Phi launched a new, shared online home for the Fraternity, Foundation and Fraternity Housing Corporation at pibetaphi.org.

JANUARY 6, 2021

Juli announced her retirement from Pi Beta Phi Headquarters. After 15 years in the role of Executive Director — and almost 20 at Headquarters — she decided to focus more fully on her family; her daughter Audri, son Austin and husband Chris.

JANUARY 22, 2021

Pi Phi announced the refresh of its award-winning Leading with Values member development program.

MAY 14, 2021

A socially distanced celebration was held outside of Pi Beta Phi Headquarters to mark Juli’s final day as Executive Director. In honor of her immeasurable impact on Pi Beta Phi, a plaque was added to the Executive Suite at Headquarters, renaming the space the Juli Holmes Willeman Executive Suite.

MARCH 13, 2020

With the guidance of Juli and other Headquarters staff, Pi Beta Phi Headquarters staff went to remote work as a precautionary measure amidst the COVID-19 pandemic. That same week, all 136 campuses with Pi Phi chapters modified their academic schedules, including the closure of 110 chapter facilities.

2022 →

Changing Lives, Families and Communities

More than a year into the COVID-19 pandemic, students and teachers still face unprecedented challenges. Access to books, both in homes and classrooms, remains more critical than ever as existing gaps in academic achievement continue to grow. As we shared in the Spring 2021 issue of *The Arrow*, our spring literacy initiative was created to respond to this need when our help was needed most.

With many of our traditional literacy events on hold, Pi Beta Phi collaborated with our partners at First Book® to reimagine the ways we could continue to make an impact. Pi Phis across the United States and Canada identified need within their own communities and connected qualified educators and organizations with First Book memberships. Each new registrant received immediate access to First Book’s extensive library of reading materials and resources, as well as a gift certificate toward new books from First Book Marketplace. Half of the books available featured titles from First Book’s “Stories for All” collection.

Books from this collection include diverse characters and themes, helping children gain confidence and develop empathy. As with all Read > Lead > Achieve® programs, the initiative was fully funded by grants from Pi Beta Phi Foundation, made possible by generous donors supporting The Literacy Fund. Educators and representatives from the newly registered organizations have reached out to tell us about the impact our literacy advocates and donors are helping to make for the children and families served through this initiative. Jamie Lanagan, an educator who works with students with special needs in Brooklyn, New York, shared the following reflection.

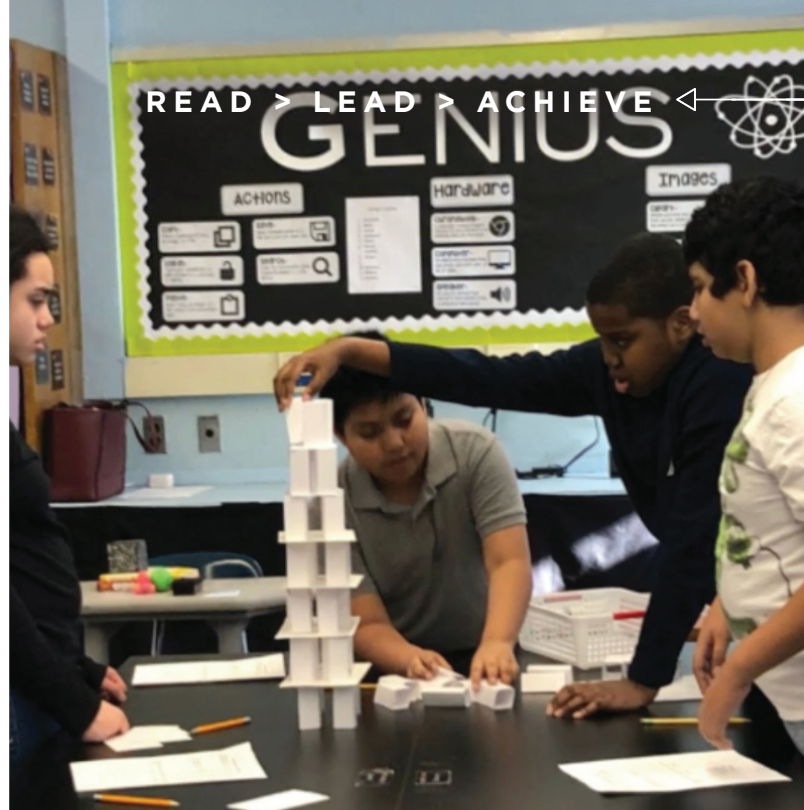
“I work at 53K, a public school in the Bushwick neighborhood of Brooklyn, New York. We’re a middle school serving students with moderate to severe special needs in grades six through eight. In my classroom, I support students with autism, intellectual disabilities and emotional behavior disorders. While my students have these disabilities, they’re very socially aware that they are “different,” are interested in and inquisitive about world affairs and challenge me with pop culture references. They overcome so many obstacles every day, and I will forever shout from the rooftops how incredible they are!

“Anyone who knows me knows my students have no choice but to love reading by the time they leave me — but as with any Title I school, our main need is always funding. For my students, funding directly impacts the availability of books in our classroom. We don’t have a school-wide library, so any books my students have access to come mainly from what I’m able to provide for them in our physical classroom — and we’ve been learning remotely for this entire school year due to the pandemic.

“Most of my students are children of color, so the need for diverse books that represent their voices and experiences is even more imperative. In addition, having a library that meets the needs of all my students is an ongoing struggle. In one classroom, I have students learning their letters alongside students who are practicing reading



Left: Jamie Lanagan’s students at 53K in Brooklyn, New York, enjoyed reading three books in the “Harry Potter” series before moving to remote learning in the wake of the pandemic.



In Jamie's classroom, students representing a wide range of abilities learn alongside each other, collaborating on work such as this architecture project. "We sometimes put away our books for math and science classes," Jamie jokes.

novels independently. My class typically studies four novels during the year, and creating a study unit for each one often means rewriting an entire book to meet my kids' individual needs. In addition, my students have 30 minutes of independent reading time every day, where they can work on their individual needs and read books that interest them. This is why a diverse selection of books is so important! Having a gift certificate to First Book Marketplace has completely changed our classroom library, both in terms of the number of books and the content.

"As a school community, our other main needs are awareness and understanding. We need awareness of the difficulties that come with urban public schools, that what

my students have is nowhere near what students in other areas have.

"We need awareness of special needs and how woefully underrepresented people like my students are in the workforce. My kids have every right to join the workforce, but how many of us realize how much discrimination exists against people with disabilities? And, we need understanding of the generational trauma my students carry that comes with cyclical poverty. With increased literacy rates, we can change lives, families and communities at their foundation." ←

September is Read > Lead > Achieve Month

Every September, Pi Beta Phi celebrates Read > Lead > Achieve Month. As Pi Phi's philanthropic effort, Read > Lead > Achieve inspires a lifelong love of reading. We ask every Pi Phi to be ONE who will participate, donate and advocate for literacy with us. Throughout the month, our social media pages and blog will feature stories from our members, chapters and clubs, helpful literacy resources and ways you can continue to make an impact.

How will you help to inspire a lifelong love of reading during Read > Lead > Achieve Month? How will your club or chapter participate, donate and advocate for literacy? Share your ideas, stories and photos with us at pibetaphi.org/submit and by using [#readleadachieve](https://twitter.com/readleadachieve) on social media.

Here's to the Friendship True

As the song goes, “A Pi Phi is an angel in disguise.” The sentiment rings true throughout Pi Phi’s sisterhood, but some halos are harder to disguise. Such is the case for the late **ADRIENNE HISCOX MITCHELL**, Kansas Alpha and past Grand Council member and Foundation Board of Trustees President. Adrienne’s contributions to Pi Phi’s success and philanthropic efforts are nearly unmatched, and her Lifelong Commitment extends even beyond her final days.

As a member of the Marianne Reid Wild Society, Adrienne designated a portion of her estate to our Foundation, resulting in a gift of more than \$1 million at a time when it was most needed. Her generosity, foresight and commitment to Pi Phi made an immeasurable difference in the lives of Pi Phis today and yet to come, and her story is one in which every sister can find inspiration.

As a committed volunteer and donor, Adrienne embodied every Pi Beta Phi core value throughout her 75 years of membership. She was a woman who showed Integrity in all she did, committed herself to Personal and Intellectual Growth and Philanthropic Service to Others — but above all, Adrienne was devoted to building and cultivating Sincere Friendships. Friendships were the heart of her commitment to Pi Phi, and the lasting impact remains for those she held dear.

Texas Beta **ANN WARMACK BROOKSHIRE** can’t say enough about how meaningful her friendship with Adrienne was and how far their bond extended. “Adrienne was such a loyal friend, to me and my entire family,” Ann says. “She and her husband, Bruce, were always world travelers, as is my youngest son, Cliff. When we were serving together on the Foundation Board of Trustees, we both happened to be in Italy with our families and met for dinner. She and Cliff took to each other immediately, and they always kept in touch about their travels.”

Adrienne and Bruce visited more than 150 countries through their decades of travel. Ever the generous spirit, one way she kept in touch with the Brookshire family was by sending airline tags from around the world to Cliff for his own collection. “Throughout middle and high school and even into college, Cliff had about 20 tags on his backpack from her travels,” Ann says. “She took the time to send thoughtful mementos to my son, and that meant the world to me as her friend and sister.”

Beyond sending mementos to friends, Adrienne was also an avid writer who shared her travel tips and stories with friends by postcard. Ann still has every postcard Adrienne sent and says they are more than just the simple “here’s what we did” message. They included her own personal travel advice, musings on any number of topics and often sweet messages of missing her friends.

Aside from her love for travel, Adrienne’s strongest commitment was to Pi Beta Phi and her sisters turned cherished friends. Her contributions to Pi Phi truly encapsulate time, talent and treasure. Through her years of leadership and service to the Fraternity and Foundation, Adrienne guided the organization, imparted wisdom to younger members and made an everlasting impact with her generosity of spirit. Two members who worked alongside Adrienne throughout her time as an International Officer include past Grand Vice President Membership **CAROL INGE WARREN**, North Carolina Beta, and Grand President Emerita **JEAN WIRTHS SCOTT**, Pennsylvania Beta.



Left, from left Texas Beta **ANN WARMACK BROOKSHIRE**, Kansas Alpha **ADRIENNE HISCOX MITCHELL** and **JEAN WIRTHS SCOTT**, Pennsylvania Beta.

“Adrienne was a mentor to me when I joined Grand Council,” Carol says. “I looked to her as both a friend and a big supporter as I started engaging with the Fraternity on the international level. I always felt like maybe I was a favorite niece to her; we were from separate generations, but we showed lots of care for each other, and our relationship was both emotion-driven and a form of mentorship.”

Carol and Jean share the same sentiments as Ann, reiterating that Adrienne went above and beyond in her commitment to sisterhood. From her Kansas Alpha sisters to her peers in leadership, Pi Phis were her family. “Pi Phi was Adrienne’s primary social connection, and she forged and maintained those friendships from every part of her life,” Jean says. “She was a Pi Phi who cherished her sisterhood connections, was friendly to each and every person, always open to new friends and a world traveler at heart.”

Ever the example of Pi Phi’s core values, Adrienne had a passion for leadership development, personal growth and service to others. She turned her talents toward these passions by devoting herself to many nonprofit organizations and causes. Adrienne was a leader in her local branch of the American Association of University Women, served as president of the Children’s Health Home Auxiliary and served Pi Beta Phi in multiple roles, including Grand Vice President Collegians and President of the Foundation Board of Trustees.

Adrienne gave of her spirit to every person and cause with whom she had a connection. In 2006, she established the Adrienne Hiscox Mitchell Scholarship with the University of Kansas Department of Chemistry to be awarded to a deserving woman in chemistry based on need or achievement. This award benefits both undergraduates and graduate students, with 25 recipients thus far since its creation. She and Bruce also supported Stanford University with an endowed chair, as well as the Castilleja School in Palo Alto, California and various arts venues throughout the San Francisco Bay Area.

Adrienne extended this same commitment to her beloved sisterhood. Not only was she a lifelong supporter of our Foundation, but Adrienne exhibited true loyalty and foresight with a bequest in her estate plan to benefit Pi Phis beyond her lifetime. She made her commitment known to our Foundation, but as with many estate plans, the amount of her gift grew overtime. Adrienne’s gift was designated to the Friendship Fund and a scholarship, the Jane Turner Campbell Memorial Scholarship to be awarded with preference to Missouri Alpha undergraduate members. Her gift is yet another example of both her Lifelong Commitment to Pi Phi and whatever the greatest needs are at the moment, and her passion for advancing women in their educational pursuits.

“With the gift bequeathed through her estate, Adrienne made a true difference for Pi Beta Phi,” says Pi Beta Phi Foundation Executive Director **HALLEE WINNIE**, Michigan Gamma. “The largest portion of her gift was made to the Friendship Fund, meaning the funds are unrestricted and can be used to meet Pi Phi’s most immediate and pressing needs. Adrienne could not have possibly known the gravity of our need at the time of her passing when she established this gift, but her generosity was transformational at a time when unrestricted giving was down more than 50% from a typical year. It allowed the Foundation to continue our operations as promised without additional financial reductions.”

Each and every sister who benefits from Foundation grants and programs — as well as the organization’s operations — will long be touched by the impact of Adrienne’s contributions. The plans members make today provide a significant difference for the sisterhood in the future. As we’ve all been reminded recently, the future brings many unknowns for which we cannot fully prepare. However, with the relief and opportunity provided by planned giving, handling and overcoming those unknowns becomes possible with the foresight of sisters who make provisions for Pi Phi today. Our sisterhood can persevere and planning ahead gives us the tools and resources to do so together. ◀

PLANNED GIVING OPPORTUNITIES

We invite all sisters to consider including Pi Beta Phi Foundation in your estate plans. All planned gift donors are honored as members of the Marianne Reid Wild Society, named for the first alumna to name our Foundation as the primary beneficiary of her estate.

Contact Individual Giving Officer **COURTNEY HAMMOCK**, Colorado Epsilon, at fndn@pibetaphi.org or (636) 256-1357 to discuss and learn more about the planned giving opportunity that’s right for you.

ALABAMA

Alabama Gamma, Auburn University and Alabama Beta, University of Alabama

In honor of Fraternity Day of Service, the Alabama Gamma Chapter teamed up with the Alabama Beta Chapter to host the Iron Bowl Book Drive - a friendly competition for literacy. The drive was more successful than the chapters imagined, as they collectively raised more than \$5,000 worth of books and school supplies for local elementary schools in Tuscaloosa and Auburn, Alabama. Both chapters are proud of their members' philanthropic efforts and hope to continue the Iron Bowl Book Drive in the future.

COLORADO

Colorado Delta, Colorado School of Mines

The Colorado Delta Chapter recently achieved the highest GPA among Panhellenic chapters at the Colorado School of Mines, as well as the third highest GPA in the fraternity and sorority community. Due to the COVID-19 pandemic, members of the chapter who didn't live in the chapter house were unable to access the chapter's study room and the textbooks available to members in that space. While several live-in members sent photos to their sisters, Director Academics **LIZZI WHITING** saw an opportunity to provide academic support to every Colorado Delta sister. Lizzi spearheaded an effort to digitize the study resources in the study room and make them accessible to all members year-round.

DISTRICT OF COLUMBIA

D.C. Alpha, The George Washington University

To celebrate Founders' Day, the D.C. Alpha Chapter worked in conjunction with the Nation's Capital - D.C., Alumnae Club to plan a virtual event. Director Fraternity Heritage **CELESTE ROBERTSON** and Vice President Member Experience **MORGAN DRAKE** organized the event along with the alumnae club, including introductions and breakout rooms where alumnae and collegians could get to know each other and network. The highlight of the night was a presentation by guest speaker California Nu **MARINA MARMALEJO**. Marina founded Dreamkit, an app that supports unstably housed youth. Marina's accomplishments demonstrate what strong Pi Phi values can lead you to achieve and inspired the members in attendance to continue to incorporate Pi Phi values into everything they do. Of course, no Founders' Day celebration is complete without a sweet treat, which was mailed to sisters to enjoy during the festivities. The treat consisted of Cherry Blossom chocolate bark from the D.C. Candy Shop, and was organized by Director Social Events **AMELIA JACQUAT**. Though it was not the same as years past, members enjoyed celebrating 154 years of Pi Beta Phi together!

DELAWARE

Delaware Alpha, University of Delaware

The Delaware Alpha Chapter holds the value of Personal and Intellectual Growth close to its heart. Chapter leaders are dedicated to educating their members and providing an inclusive and safe space for everyone on campus. During the spring semester, Director Diversity/Inclusion (DDI) **SARINA SIMPSON** hosted numerous events to encourage members to examine their privilege as college women while fighting for others around the world. Before recruitment, Delaware Alpha looked at harmful stereotypes surrounding the recruitment process and brainstormed ways to make all Potential New Members feel welcomed. At chapter meetings, Sarina discusses current events, educates members on what is happening outside of campus and provides members with tangible resources. Sarina says, "By educating each other on other cultures and religions, and by providing members with resources to be allies to oppressed communities, the DDI expands the horizons of everyone in the chapter. Providing ways to participate in human rights movements and resources to help those in crises allows the chapter to be part of something so much bigger."

FLORIDA

Florida Delta, University of Florida

The COVID-19 pandemic disrupted many volunteering and fundraising initiatives. However, with perseverance and planning, the Florida Delta Chapter was able to plan a successful in-person philanthropy event during the spring semester. The Florida Delta Chapter embraced the challenges presented by the pandemic and organized Down N' Dirty 2021 - a dodgeball tournament - with help

Below, from left: Florida Deltas **TEAGAN MILFORD, SOFIA MIRET, ALEXIS ROSA, KATE ALTMAN** and **LILLIAN WIGGINS**.



from their Alumnae Advisory Committee, the Region Four team and the University of Florida. Social distancing, masks and clearance from campus were mandatory for volunteers and participants. By implementing an effective contact-tracing registration system, the philanthropy event occurred safely and successfully, and in compliance with all regulations and guidelines. The combined efforts of the dodgeball tournament and other smaller fundraisers throughout the semester not only lifted the spirits of the women in the Florida Delta Chapter, but also raised more than \$18,000 in support of Read > Lead > Achieve®. In addition to the tangible outcomes of the fundraisers, participating in philanthropic service also served as a morale boost for a community feeling the hardships of the past year. The chapter's ability to come together and support literacy efforts served its members and the Gainesville community well, providing a sense of hope and optimism for the future.

Florida Eta, University of Miami

Florida Eta has been thriving as its charter members have successfully completed their first semester at the University of Miami (UM). As Pi Beta Phi's first-ever virtually established chapter, members have gone above and beyond to connect with one another in unique ways. From virtual meetings to socially distanced celebrations, members have shown resilience as they formed strong bonds and Sincere Friendships. On Founders' Day, the chapter held a combined book drive and recruitment tabling event. Director Service and Philanthropy **ESTHER CAI** helped coordinate book donations to local communities in support of Pi Beta Phi's philanthropic commitment to creating a more literate and productive society. Working alongside Esther, Vice President Recruitment **EMILY MARQUEZ** helped guide current members as they raised awareness and interest among Potential New Members and promoted Pi Phi sisterhood among the communities at UM. The Florida Eta Chapter is excited to continue its philanthropic involvement in upcoming semesters.

GEORGIA

Georgia Alpha, University of Georgia

GABBY FILKINS was actively involved with Food2Kids since her freshman year at the University of Georgia (UGA). Food2Kids is a student-run nonprofit organization that partners with the Food Bank of Northeast Georgia to decrease food insecurity in and around Athens. "I knew I wanted to get involved at UGA and give back to the community and Food2Kids gave me just that and more," Gabby says. "From having our weekly Wednesday baggings at the food bank before COVID to having to transition to more COVID-friendly options such as bag drop offs and mobile food pantries all around Athens, it has been a blast." As a senior, Gabby served on the Executive Board as one of the Directors of Organizational Outreach to help promote fraternity and sorority involvement with Food2Kids. She says her favorite part about being a member of Food2Kids was not only connecting and working with others in the UGA community, but also the broader Athens-Clarke community.

Below: Georgia Alpha **GABBY FILKINS**



ILLINOIS

Illinois Eta, Millikin University

The Illinois Eta Chapter hosted a philanthropy event, “Breakfast for Champions,” at the chapter house to raise money for Pi Beta Phi Foundation and promote Read > Lead > Achieve on campus. **KAELA ADAMS** and **KELSEY BAKER** worked tirelessly to put on a successful philanthropy event while following COVID-19 guidelines, and thanks to their efforts, the chapter was able to double its fundraising from previous years. In total, the chapter raised \$2,951 and received more than 1,300 books. During this event the chapter was able to showcase its new Little Free Library which was installed on the front lawn. This book drop is for any community member to come and take books to further their learning and promote literacy.



Above: Chapter President **ALLY BANKS** poses with the new Little Free Library in front of the Illinois Eta Chapter house.

INDIANA

Indiana Delta, Purdue University

Amid finals season, tension and stress tends to run high among college students. Mental health is extremely important to the Indiana Delta Chapter, which inspired chapter leaders to plan a sisterhood event to try to relieve this stress. Vice President Member Experience **OLIVIA KENNA** and her team planned a fun cookout and ice cream social to give sisters a chance to decompress and gather near the end of the semester. She coordinated with Pi Phi chefs Jacob and Josh to grill burgers and hotdogs outside for live-in members to enjoy together. Following the cookout, Olivia surprised members with frozen custard floats from a local shop. All members were invited to enjoy these floats on the patio and hang out before returning to their studies leading up to finals. **LEXI ROEMER** says, “It was amazing to take a second away from studying and hang out with my friends. I am going to miss them all a ton this summer. Plus, nothing beats good food and getting to enjoy the weather.”

Indiana Theta, Valparaiso University

In early April, Valparaiso University held its ninth annual “ValpoDM” Dance Marathon event to benefit Children’s Miracle Network Hospitals. Every year, Indiana Theta Chapter members participate as both dancers and Leadership Team members for the event. Senior **LILLIA POGUE** served as the Dance Marathon Overall Director from April 2020 to April 2021. In this position, Lillia oversaw an Executive Board of 10 individuals and a Leadership Team with 67 members. In 2021, despite the challenges presented by the COVID-19 pandemic, ValpoDM fundraised \$71,431.09, the most money ever raised in the history of the event. The Indiana Theta Chapter is proud to have raised a total of \$8,760, the most of any sorority.

Valparaiso University also awarded Dance Marathon with the Dr. Bonnie Hunter Student Organization Program of the Year. Lillia played a large role in making the event so successful, and the Indiana Theta Chapter is incredibly proud of her achievement. Despite many obstacles, Lillia remained centered on her ‘why’ by doing everything she could for the kids that needed help the most. She is proud of her team for making miracles happen in the face of adversity. Lillia connects both her efforts in Dance Marathon and her membership in Pi Phi by explaining, “My work through Dance Marathon means so much to me because of my Pi Phi values. Philanthropic Service to Others and Personal and Intellectual Growth are at the core of my work at Valparaiso University through Dance Marathon. As I put my heart into this philanthropy throughout my collegiate career, I was striving to exemplify what it means to be a Pi Beta Phi woman to the Indiana Theta Chapter and the rest of the Panhellenic

and Valparaiso community.” The members of the Indiana Theta Chapter are proud of Lillia’s commitment to servant leadership and her passion for helping others.

MISSOURI

Missouri Gamma, Drury University

The Missouri Gamma Chapter spent the spring semester focusing on what philanthropic service means to its members, emphasizing the Pi Phi core value of Philanthropic Service to Others. The chapter hosts annual philanthropy events on campus, including Pie a Pi Phi, a lip sync competition called Puttin’ on the Lips, Love for Literacy (where members sell wine and pink carnations with literacy facts on Valentine’s Day) and Pi Burger Fry. The chapter also participates in a book club with a local elementary school where members get to see their impact firsthand. Director Service and Philanthropy **ASANTAE HAANSTAD** came into her position with the goal to find alternative ways to raise funds and awareness for children’s literacy and to focus on the meaning behind the value of Philanthropic Service to Others.

In April, Missouri Gamma hosted its first service week to promote service in the community and to raise money for Read > Lead > Achieve. The week’s events included virtual book readings and a pen pals program with a local elementary school, as well as a virtual fundraiser for Read > Lead > Achieve. The chapter raised more than \$660 for children’s literacy and created a stronger sisterhood through the value of Philanthropic Service to Others.

NEBRASKA

Nebraska Beta, University of Nebraska

In March 2021, the Nebraska Beta Chapter hosted its first Dodge for a Cause dodgeball tournament. The event raised money for Read > Lead > Achieve through team signups, ticket sales and donations. Seventeen teams participated in the day-long dodgeball event that was hosted with COVID-19 safety measures in place. Chapter members staffed the event as greeters, referees, dodgeball sanitizers, team coaches and photographers. The winning team, composed of members from the Pi Kappa Alpha chapter at the University of Nebraska, received \$250 toward its own philanthropy. Director Service and Philanthropy **MORGAN PEREZ** and her team worked hard all semester to make the event a success. From creating t-shirts and social media fundraising templates to communicating with the fraternity and sorority community, Morgan and her team made sure everyone had an enjoyable time at the chapter’s first in-person philanthropy event in over a year.

Right: Members of the Pi Phi Dodge for a Cause team.



Above: Missouri Gammas **SADIE VAHLE, ADDY SPORLEDER, CHLOE JONES, EMMA ABBOTT, KATE HALL** and **ASANTAE HAANSTAD**.



OREGON

Oregon Alpha, University of Oregon

During the 2020-2021 academic year, the Oregon Alpha Chapter implemented the Racial Ethical Awareness Development (READ) Committee with the goal of taking an educational approach to combat racial injustice. The READ Committee is led by Director Diversity/Inclusion **YAZMEEN BOUNNAM** with feedback and assistance from other members. Sophomore **KIANA GELLMAN** says, “READ was created to educate our chapter members and create a space in which we can learn and grow together by developing a shared passion for and understanding of racial justice.” During chapter meetings, members of READ put together presentations on a wide range of topics, including cultural appropriation, racism in fraternity/sorority life, the model minority myth, cancel culture versus call out culture, women in hip hop and the white savior complex. READ has given chapter members a unique and safe environment to learn about new topics, ask questions and become better, more educated and understanding members of society. Kiana hopes other members will be inspired to continue these conversations during chapter meetings and beyond — and that the committee motivates other sororities and fraternities to educate their members on similar issues.

UTAH

Utah Alpha, University of Utah

The week of March 29 was Utah Alpha's philanthropy week, featuring four days of events which raised a total of \$2,600 for Read > Lead > Achieve. To accommodate the limitations imposed by COVID-19, Director Service and Philanthropy **TATTIANA SPEARS** created the week of hybrid activities to ensure members and the community could safely engage in the philanthropy events. On Monday, the chapter held a frozen yogurt night at the local "Ugurt" shop with customers from other fraternity/sorority chapters and members of campus. The Lemonade for Literacy lemonade sale on Tuesday featured individually-packaged, sealed containers of lemonade for sale outside of the chapter house. As customers stopped by, Vice President Recruitment **NICOLE CHOI** held an Instagram takeover with Director PR/Marketing **CARLIE DIBELLA** where Nicole interviewed fraternity and sorority members about why they support Pi Phi's philanthropy. They also shared their favorite philanthropic events and memories from past years. Thursday night was the virtual Line Dancing for Literacy where Pi Phis and other Panhellenic members dressed up and learned line dancing routines over Zoom. The chapter is grateful to everyone who contributed to philanthropy week and helped support Read > Lead > Achieve!

Below, from left: Utah Alphas **ALLIE FAUBERT, ANNIE BRIDGES** and **BROOKE MCMURREY** work the Lemonade for Literacy sale during the chapter's Philanthropy Week.





Above, from left: Texas Gamma Executive Council **HALEY HUTCHINSON, EMILY AYOUBI, EMILY ELLIOT, HANNAH MIARS, ALLIE VOYLES, LINDSEY DAY** and **RYLIE MCNABNEY**.

TEXAS

Texas Gamma, Texas Tech University

The Texas Gamma Chapter has made a great effort to maintain a strong, premier membership experience. The chapter implemented a new program called Sisterhood in Real Life, which helps members embrace the inherent, inner value of each individual in the chapter. This has been an amazing way to establish and foster Sincere Friendship. The chapter has been incredibly receptive, and the program has turned out to be a lot of fun! While the challenges of everyday life are still daunting, the chapter wants to keep morale high.

Because the chapter was able to have in-person chapter and recruitment meetings during the spring semester, the Chapter Leadership Team used the opportunities to encourage a feeling of fun and sisterhood. As the women entered the lodge, music played while everyone socialized and even danced together! Seeing members have fun and remember why they joined Pi Phi reminded every chapter leader of why they chose to serve the chapter. ◀

Doing Our Best Without Fear

Florida Delta **SAMANTHA GILDEA** believes each of us holds an obligation to understand our impact on the world. As the founder and co-director of DiversiPhi, a student-led initiative to promote diversity, equity and inclusion (DEI) work within the University of Florida (UF) sorority community, Sam also believes engaging in challenging conversations can help develop that understanding and empower others to do the same. “We show homage, solidarity and respect to each other when we ask questions and when we challenge each other to be better,” she says.

As her chapter’s Vice President Housing, Sam offered weekly micro challenges to integrate mindfulness practices, empowerment tools and mental health awareness into her sisters’ daily lives. She saw an additional opportunity for intentional dialogue about the ways DEI work intertwines with Pi Phi values. A group of Florida Deltas, including **SOPHIE BETANCOURT, LILY KILBERT, ANIA MURILLO** and **VALERIA REYES**, to meet regularly to share their lived experiences and discuss related topics, and DiversiPhi began to take shape.

The group leaned heavily on mentors, teachers, peers and other resources to educate themselves and find a formal structure to support their work. Eventually, the DiversiPhi members focused their conversations on six pillars — racial and ethnic diversity, LGBTQIA+, women’s empowerment, lingual diversity, accessibility and spirituality — and the added impact of intersectionality. Sam became a voice for empowerment within the UF sorority community, and members of other sororities began to reach out to the group for support. “I saw how important this work is, and we couldn’t stop,” Sam remembers.

Then came the spring and summer of 2020, and public outrage over racism and the deaths of Black people at the hands of police and others began to build. The DiversiPhi members felt a new sense of urgency and awareness guiding their work. “I realized this work couldn’t stay within Pi Phi — it needed to be the standard for our community,” Sam says. “I started calling every sorority president, encouraging them to create a DEI committee within their chapter that was ready to start work in the fall.” Under Sam’s leadership, DiversiPhi members worked feverishly to develop programming around their six pillars. They drew on personal connections, used their own funds and poured hours of work into the project each day.



Florida Delta **SAM GILDEA**

As the group’s momentum and presence grew, Sam received a call from the President of the Panhellenic Council (PHC). “She understood the significance and value of the work,” Sam says. After some negotiation, DiversiPhi officially merged with PHC for the 2020-2021 academic year — which offered critical funding, mentorship and the ability to make DEI programming required for UF’s sororities. In Fall 2020, DiversiPhi began to present monthly talks on each pillar topic to sorority DEI chairs, coupled with additional resources and activities for chapters to explore. “Every chapter is at a different level of exposure and comfort with these topics,” Sam explains. “Empowering the DEI chairs to educate their own chapters helps them meet their sisters where they are. Having these conversations within the context of sisterhood empowers us to do our best without fear.”

Sam hopes DiversiPhi will provide a space for diverse voices and give the UF community a chance to continuously better itself. “DiversiPhi will never be about checking a box or placing a band-aid over issues,” she says. “Instead, we aim for a standard of education, dialogue, awareness and mindfulness to change the way women interact with each other and to transform fraternity/sorority life in sustainable ways to ensure we’re a welcoming community for all students.” ◀

ARIZONA

Phoenix, Arizona, Alumnae Club

Shortly after Thanksgiving 2020, Arkansas Alpha **JOSEPHINE CURE ABRAMS** was riding her bike with a friend when the two collided, and Josephine ended up in the emergency room. She had to wait several days to have surgery on her back, which was broken in two places. After a lengthy stay in the hospital and in a rehab unit, she was finally released to return to her home where she lives with her dog, Lizzie. Family members were able to care for Josephine for a few weeks, but then she would be on her own with two rods in her back, a cumbersome back brace and several months of limited activities and movement. Josephine has led the Phoenix, Arizona, Alumnae Club's book club for several years, and when other book club members heard of her circumstances, they immediately rallied to support her convalescence. During this tough year fighting a global pandemic, many of the usual support options were not available.

In an effort to provide support from the Phoenix club, Ohio Zeta **LAURA ECKMAN ATWELL** invited 30 alumnae sisters to send cards to Josephine, and organized food deliveries to her home for the first three weeks that she would be on her own. Other Pi Phis who lived too far away could contribute money to supply food boxes for another few weeks, until Josephine could safely navigate her kitchen and take care of herself and Lizzie. They were joined by about 20 sisters from Josephine's alma mater, the University of Arkansas, who heard about her accident and sent gift certificates for food deliveries and a bookstore to supply her with reading material.

Arkansas Alpha **ANN CRIGGER SHAW** remembered Josephine being her babysitter when she was young; she and her mother, Arkansas Alpha **PATRICIA ANN MCKENZIE CRIGGER**, had kept in touch with Josephine over the years. When she heard about her friend's accident, Ann helped purchase meals and other basic needs. She remarked, "I am thankful Pi Phi has remained an integral part of Josephine's life and that her Arizona and Arkansas Pi Phi friends are helping her recover from her accident." Josephine's story illustrates how much it can mean to receive support from Pi Phi friends, near and far, especially in these times of isolation and uncertainty. Pi Phi friends are for life, and the bonds of wine and silver blue are strong, even in times of a global pandemic.



Above: **JOSEPHINE CURE ABRAMS** with her dog, Lizzie, prior to her bike accident.

DISTRICT OF COLUMBIA

D.C. Alpha Alumna

Please join Pi Beta Phi in celebrating the 100th birthday of D.C. Alpha **FLORENCE COLBERT CASSIDY**. Florence was initiated into Pi Beta Phi in February 1939 at The George Washington University as a second-generation Pi Phi. Her mother, D.C. Alpha **MARGUERITE CLARK COLBERT**, had joined Pi Phi 23 years prior and passed along the sisterhood tradition. According to her family, Florence has always been very fond of her Pi Phi memories, and she continues to read *The Arrow* from cover to cover. Pi Phi has been a lifelong source of fun and friendship for Florence, and she was actively involved with both the Northern Virginia Alumnae Club and the St. Petersburg, Florida, Alumnae Club over the years. Florence also showed her Lifelong Commitment to Pi Phi by assisting with sales at Arrowmont. In 2016, members of the Virginia Epsilon Chapter at the University of Virginia attended Florence's 95th birthday celebration to present her with a Diamond Arrow anniversary badge in honor of 75 years of membership in Pi Beta Phi.



FLORIDA

Naples, Florida, Alumnae Club

Fifty Members of the Naples, Florida, Alumnae Club celebrated the club's 50th anniversary in 2021, joined by one of their founding members, Ohio Beta **ANN ROBINSON DILBONE**. On June 1, 1971, 15 Pi Phis signed the charter to create the Naples Alumnae Club. At the 50th Anniversary Celebration on March 18, Ann, the only surviving founder and still a Naples resident, stood at the podium and told the members in attendance about the beginnings of the club. She described how small Naples was 50 years ago and that the alumnae club had events such as teas, luncheons, Arrowcraft product sales and Beaux & Arrows events to include husbands and partners. Other highlights of the celebration included seven past presidents toasting the club's 15 founders, singing Pi Phi songs, enjoying a luncheon outside on the patio of a private club, a special anniversary cake, and gifts of commemorative Pi Phi water bottles, wine carnations and 50-year history booklets which include memories from 10 past presidents. A special highlight was the outstanding graphic presentation — 50 years of historical photos and newspaper clips, produced by two creative sisters.

Left: Ohio Beta **ANN ROBINSON DILBONE**, a founding member of the Naples, Florida, Alumnae Club, spoke at the club's 50th anniversary event.



KANSAS

Kansas Beta Alumna

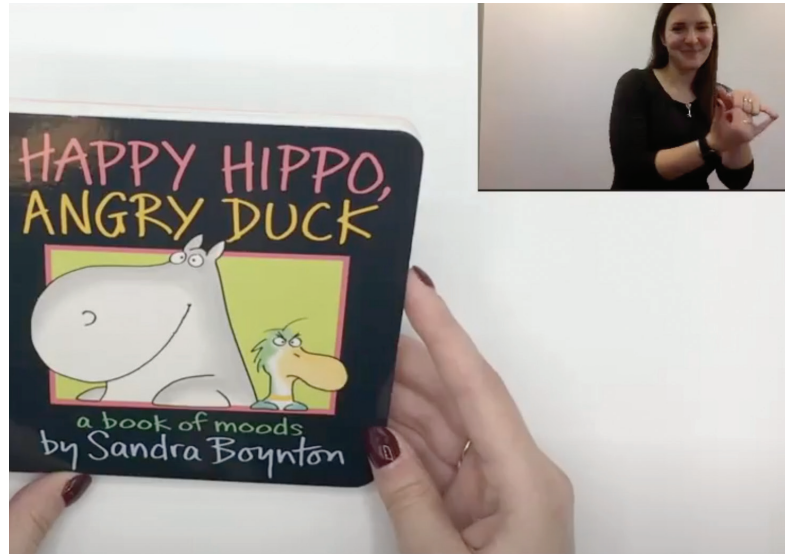
Kansas Beta **KJ DELL'ANTONIA** is the proud author of "The Chicken Sisters," a New York Times bestseller. The story is a humorous exploration of the importance of finding joy in our families, the challenge of figuring out what makes us happy and the need to value the people in front of us more than the ones in our phones and laptops. The novel earned accolades as Reese Witherspoon's Book Club Pick for December 2020 and also was selected for the Indie Next List. KJ is also the author of the book "How to be a Happier Parent" and is the former editor of the New York Times' "Motherlode" blog. She lives in New Hampshire with her husband, four children, and assorted horses, chickens, dogs and cats. She is the co-host of the #AmWriting podcast and is currently hard at work on her second novel.

Left: **KJ DELL'ANTONIA** with a copy of her New York Times bestseller, "The Chicken Sisters."

MISSOURI

Missouri Alpha Alumna

Missouri Alpha **KENDALL MALKIN** and her team in at the Upstate Golisano Children’s Hospital in Syracuse, New York, have been brainstorming ideas to help connect with patients who are in isolation for treatment. The team turned to virtual events, including virtual story times available whenever patients needed a pick-me-up during isolation. Kendall’s team worked with Read Across America to record videos of the books along with voiceovers. As a deaf woman, Kendall wanted to ensure children who are deaf or hard of hearing could partake in the literacy events, so she recorded herself reading the books in American Sign Language to make the titles more accessible to all readers. Kendall says, “I felt a connection to Pi Phi’s philosophy of enriching literacy and knowing the importance of reading.” This is a true example of Philanthropic Service to Others tailored through an inclusive lens.



Above: **KENDALL MALKIN** records herself doing sign language to make storytelling videos accessible to all patients at the Upstate Golisano Children’s Hospital in Syracuse, New York.

TEXAS

Fort Worth, Texas, Alumnae Club

The Fort Worth, Texas, Alumnae Club’s 28th Annual Design Inspirations event was reimagined in 2021, as were many other fundraising events due to the ongoing pandemic. Since an in-person event was not an option for the March event, the Board of Directors — made up of representatives from the local Kappa Kappa Gamma

Alumnae Club and Pi Beta Phi Alumnae Club — voted to have two days of giving on the original dates the 2021 event was slated to be held. More than \$74,000 was raised during the two-day fundraising event, and Design Inspirations was able to gift its two beneficiaries, Gill Children’s Services and Rivertree Academy, with \$37,000 each.

Below, from left: Fort Worth Alumnae Club members Texas Beta **DUFFY PITTS BLOEMENDAL**, Texas Delta **SHARON FAST FULGHAM**, Mississippi Beta **HEATHER MCEWEN SENTER**, Rivertree Academy Development Director Michelle Norris, Texas Eta **KATY CAMERON OLIVER** and Oklahoma Beta **AMY HOLLOMAN ADAMS**.



Texas Gamma Alumna

Texas Gamma **ERIN O'NEILL CLAYTON** is the founder of PEACE Play Kits. At the beginning of the pandemic, Erin, like many women, found herself homeschooling her child. She purchased whatever she could find to keep him engaged, learning and stimulated at home. Because the products she found were often too education-dense or fun-focused, her son became bored very easily. Leaning on her degree in human development and family studies, Erin created PEACE Play Kits. Each sensory-based kit is created with thought and intention, includes educational elements and finds the right balance of learning and fun.

VIRGINIA

Virginia Iota Alumna

Virginia Iota **ISHWARYA NAGULAPATI** competed for the Miss Virginia USA crown on July 17 in Richmond, Virginia. Her current title is Miss Chantilly USA, and the platform she represented is Leadership through Literacy. The objective of Leadership through Literacy is to tackle illiteracy for all ages and develop leadership skills, helping others learn how to read and write and grow in financial and health literacy.



Above: **ISHWARYA NAGULAPATI**, Miss Chantilly USA

WASHINGTON

Washington Gamma Alumna

Washington Gamma **JULIE JACOBSON GATES**, TransLoc Director of Communications & Policy, was recognized with a Women in Business Award from the Triangle Business Journal, a leading provider of business news for North Carolina's Triangle area. The Women in Business Awards recognize outstanding women in the Triangle area with significant accomplishments in business and community service. Recipients represent the best in professional accomplishment, leadership and development. This year's winners were selected from a group of roughly 200 nominees. "Julie is a critically important part of our organization," said TransLoc Vice President of Marketing, Communications, and Strategy Ron Cygnarowicz. "She enriches the lives and careers of our team members with her extensive communications background and unwavering support and positive attitude. Julie's contributions to TransLoc are highly valued and overshadowed only by her commitment to community and equity advocacy. We are immensely proud to have Julie on our team."

WISCONSIN

Wisconsin Alpha Alumna

In 2016, Wisconsin Alpha **ALISON ROOTBERG** founded Wellness4Every1®, a wellness company that provides access to quality arts and physical education classes for students at Chicago Public Schools. Despite the challenges of shifting to virtual programming during the pandemic, Wellness4Every1® became a certified Women's Business Enterprise, continued to host monthly events and virtual residencies and published two books, "Yoga4Every1" and "Dance4Every1." The books feature themes of diversity and inclusion, encouraging conversations about how yoga and dance are for everyone. Today, Wellness4Every1® has provided programming to 90 schools, reaching more than 10,000 students. ←

Honoring Our 75-Year Diamond Arrows

This year, 937 women celebrated their Lifelong Commitment to our Fraternity by joining the Order of the Diamond Arrow. Certificates were requested to honor 75 years of membership in Pi Beta Phi for the following members. ◀

Janice Johnson Arthur
South Dakota Alpha

Nancy Laird Bankston
North Carolina Alpha

Teresa Howe Bartholomew
Virginia Gamma

Bette Pence Beck
Kentucky Alpha

Rhoma Van De Mark Berlin
Ohio Beta

Lucille Huizinga Billard
Illinois Epsilon

Mary Nantz Black
Ohio Delta

Mary Ellen Brininger Blanton
California Delta

Virginia Smith Bowman
Ohio Beta

Gloria Strome Broadfoot
Tennessee Alpha

Virgene Hansen Buthman
Nebraska Beta

Gwen Fowler Clark
California Delta

Helen Simpson Coulson
Missouri Alpha

Anne Warren Denig
Colorado Alpha

Phyllis Burkhardt Doescher
Wisconsin Beta

Martha Rogers Doyle
Ohio Zeta

Jacqueline Nelson Flynn
California Delta

Ann Anderson Franklin
North Carolina Alpha

Florence Sawusch Froland
Illinois Epsilon

Myra Rowley Gallant
Ohio Delta

Helen Wolfe Garrett
Texas Beta

Pat Blohm Hall
Iowa Beta

Elizabeth Wetzel Hamrick
Pennsylvania Beta

Nancy Newton Handley
California Gamma

Roseann Evans Herndon
Oklahoma Beta

Beatrice Bickford Hicock
Vermont Beta

Ann Andrews Hill
Georgia Alpha

Barbara Gould Hoffman
Nevada Alpha

Virginia Hutchison Hovde
Florida Gamma

Nyla Olson Howard
Kansas Beta

Phoebe Foster Hughes
Texas Beta

Betty Price Hughes
Alabama Alpha

Phyllis Anderson Hunt
Alabama Alpha

Marjorie Guerber Jessup
Oregon Beta

Mary Lou Harris Johnson
California Gamma

Peggy Payne Johnston
Texas Alpha

Sally Rowe Jones
Kansas Alpha

Mavis Magleby Kelly
Nevada Alpha

Portia Baldwin Kendall
Kansas Beta

Doris Shields Kendrick
Arizona Alpha

Mary Jervey Kilby
D.C. Alpha

Phyllis Augustin Larsen
Indiana Gamma

Jean-Marie Ross MacKinnon
Ontario Beta

Joan Johnston Mactier
Iowa Gamma

June Daugherty O'Donnell
Illinois Epsilon

Vi Van Zelst Orr
Illinois Alpha

Susan Singleton Pease
Indiana Gamma

Arlene Cormier Place
Massachusetts Beta

Barbara Bruns Starr
New York Alpha

Jane Schmittgall Stolzenberg
Connecticut Alpha

Alice Keighen Strunk
Illinois Zeta

Beverly Wood Swanson
North Dakota Alpha

Myrelle Eccles Thomas
Utah Alpha

Mary Lib Vick Thornhill
Texas Alpha

Phyllis Weeks Tull
Illinois Zeta

Martha Nunn Ulbricht
Texas Alpha

Joylin Johnson Vandenberg
Nevada Alpha

Marjorie Knight Watson
Texas Alpha

Jane Davenport Wetmore
Massachusetts Beta

Sherry Leeka Wiese
Nebraska Beta

Margaret Cameron Yaeger
West Virginia Alpha

Long-Lasting Convention Connections

by Pi Beta Phi Historian and Archivist **FRAN DESIMONE BECQUE**, New York Alpha

Sincere Friendship has been a mainstay of the Pi Phi experience since April 28, 1867. From meeting on Bid Day to meeting alumnae from all walks of life, opportunities for friendship are lifelong and plentiful. Many long-lasting Pi Phi friendships have emerged from international events, including conventions. With all the Pi Phi Pride and excitement, what could be a better place to meet new friends and treasure old ones than at a Pi Beta Phi Convention?

This tradition goes back as far as our sisterhood. One such Sincere Friendship was formed in 1901, when Pi Phi had only 3,500 total initiates from 30 chapters in 19 states. That July, the New York Alpha Chapter at Syracuse University hosted approximately 90 sisters for Pi Phi's 17th convention. Among the attendees were Massachusetts Alpha **ANNA ROBINSON (NICKERSON)** and Vermont Beta **GRACE GOODHUE (COOLIDGE)**, decades before the latter would become First Lady to President Calvin Coolidge. Grace had completed her junior year at the University of Vermont and Anna was a recent Boston University alumna, and the two formed a quick, meaningful friendship. Anna later said of meeting Grace at convention, "I can see her now - so vivacious and full of fun."

After leaving Syracuse, the two kept in touch by writing letters. After graduation, Grace moved to Northampton, Massachusetts, where she worked at the Clarke School for the Deaf. There, she met a young lawyer in 1903, a Phi Gamma Delta from Amherst College. Grace and Calvin Coolidge married on October 4, 1905, at the home of her parents in Burlington, Vermont. One day earlier, Anna married David D. Nickerson in Malden, Massachusetts.

Grace was a charter member of the Springfield, Massachusetts, Alumnae Club and Anna belonged to the Boston, Massachusetts, Alumnae Club. Both served as their respective club presidents, and in 1912, they were both Pi Phi officers. Anna was the Alpha Province President working with collegiate chapters and Grace was elected the Alpha Province Vice President overseeing alumnae clubs.

When the 1915 Berkeley Convention was announced, Anna and Grace — among other East Coast Pi Phis — were preparing to make the long trip to California. To make the most of the trip, they joined a group of 15 Pi Phis who travelled from Boston to Chicago on a special train car. That car joined the "Pi Phi Special" the rest of the way to California. It was essentially a Pi Phi party before

Below: Attendees of the 1901 Convention in Syracuse, New York, including Anna and Grace. The two kept in touch following the Syracuse Convention and would later start Round Robin letter-writing with fellow attendees of the 1915 Convention in Berkeley, California.



convention as it took almost a week to make the trip. There were stops for sightseeing and meeting with local chapters and alumnae clubs along the way.

The group from Boston — two Vermont Betas and the rest Massachusetts Alphas — enjoyed travelling across the United States, celebrating Pi Phi sisterhood at convention and touring the Pan American Exposition. They all went to a party hosted by a Massachusetts Alpha who lived in Glendale. All, that is, except for Grace. Her husband was running for lieutenant governor of Massachusetts, and she felt she should return home to him and their two young sons to help with campaigning.

Because of her early departure, the group promised to stay in touch through a “Round Robin” letter. This involved a packet of letters, one from each woman, being mailed to each participant so everyone could see the previous responses from all the other members. Upon receiving the packet, a woman would remove her previous letter, write a new one and mail it on to the next in line.

The Round Robin letter continued throughout the women's lives. After Calvin Coolidge was elected Vice President in 1921, Anna asked Grace if she could store her letters for safe keeping and future reference. Grace replied, “My interest in my letters, also my responsibility, ceases with the last lick of the envelope. My advice is to consign them to oblivion. Burned letters tell no tales.” Lucky for us, copies of some of the letters Grace wrote to her Pi Phi friends were retained for future Pi Phis and friends to look back on.

In April 1924, as part of the Fraternity's Eastern Conference, Pi Beta Phi presented a portrait of then-First Lady Grace to the White House, painted by Howard Chandler Christy. At this event, the Robins also had a special gift for Grace, a jeweled Pi Phi badge. Lloyd G. Balfour, the Fraternity's official jeweler, wanted to gift her a new badge, but the Robins insisted on purchasing one for her knowing that although it would likely be less ornate than the one Balfour would have given her, it would mean much more to Grace coming from her Pi Phi friends. The President and First Lady met privately with her Robin friends before the portrait was unveiled and it was during this time that the Robins gave her the jeweled arrow badge.

Anna was Grand Vice President of the Fraternity in 1924 and acted as a liaison between the Fraternity and the First Lady in preparation for the presentation of the portrait. She also served as toastmistress of the Eastern Conference banquet and is standing next to the First Lady in the picture taken on the White House lawn along with more than 1,200 Pi Phis.

Reminiscing on their long friendship, Anna later said of her friend Grace, “I have seen Grace in so many different circumstances and have always marveled at and admired her poise — she was always just herself without any frills or affectations, no gush, no condescension. Once when Calvin was Vice President, I was in their suite in the New Willard Hotel. Various callers came and went. Her manner was the same to the woman asking for a charitable cause as to a foreign ambassador. Just her usual friendly way — poised, unaffected, perfectly natural.”

At the 1901 Syracuse Convention, none who were there could have known a future First Lady was in attendance, making one of her lifelong Pi Phi friends in the process. That's the power of a Pi Phi convention mixed with a large dose of Sincere Friendship. ◀



The diamond-crusted arrow badge gifted to Grace by her fellow Round Robins. The badge's guard pays homage to her husband's Theta Lambda Phi legal fraternity pin.

In Memoriam

We honor our Pi Phi sisters who have passed away and celebrate their part in our sisterhood.

In Memoriam lists the name and initiation year of each member who has died. The list below reflects notification by public obituary received at Pi Beta Phi Headquarters between February 1, 2021 – April 30, 2021. Obituaries may be submitted at pibetaphi.org/in-memoriam.

Memorial gifts made to Pi Beta Phi Foundation are a loving and lasting way to honor the memory of a beloved Pi Phi sister. To make a memorial gift, please call our Foundation at (636) 256-1357 or visit pibetaphi.org/foundation. ←

ALABAMA BETA

Lou A Mulliniks Duncan, 1957
Ann Douglas Henagan, 1954

ARIZONA ALPHA

Nan Doubet Brown, 1961
Lynne Vanerka Jackson, 1959
Joan Purdy Roney, 1945

ARKANSAS ALPHA

Sara Housley Ferguson, 1943
Inez Wallis Hartley, 1960
Carolyn Warmouth Polk, 1962
Carol Bowman Williams, 1964

ARKANSAS BETA

Susan Young McCoy, 1974

CALIFORNIA BETA

Ann Hawley, 1951
Betsy Swift Kline, 1951

CALIFORNIA DELTA

Robin Templeton Quist, 1946

COLORADO ALPHA

Elizabeth Carpenter Harrington, 1949

COLORADO DELTA

Heidi Erker Tanner, 1996

CONNECTICUT ALPHA

Betty Fischer Henriksen, 1947

D.C. ALPHA

Rachel Bruner McComb, 1950

FLORIDA ALPHA

Carol Belcher Abernathy, 1956

FLORIDA BETA

Betty Prather Hyde, 1956
Adria Whittle Snyder, 1955

FLORIDA DELTA

Suzie Behrman, 2009

GEORGIA ALPHA

Marcel Andriette Fincher, 1978
Clare Isanhour, 1947

IDAHO ALPHA

Janemarie Smith Prestel, 1956
Donna Kindschy White, 1966

ILLINOIS BETA-DELTA

Joann Westerfield Lundeen, 1944
Ruth McGee O'Dwyer, 1950

ILLINOIS ETA

Judith Hagebush Larson, 1957

ILLINOIS THETA

Cheri Nordenberg Greenlee, 1968
Barbara Ketcham Leiter, 1964

ILLINOIS ZETA

Suzanne Wideman Prichard, 1950

INDIANA ALPHA

Martha Garner Sass, 1954

INDIANA BETA

Hazel Ganoe Kriesel, 1953

INDIANA DELTA

Shirley Wileman Dunn, 1943
Doris Bachmann Fitzpatrick, 1950

INDIANA EPSILON

Virginia Jordan Burchard, 1953
Virginia Auble Knueppel, 1945

IOWA ALPHA

Annette Jennings Scieszinski, 1974

IOWA BETA

Jo Ann Bennett Boltinghouse, 1954
Cindy Houghan, 1967
Robertta Starry Kerr, 1948
Sharon Wolf Martin, 1962
Barbara Worth Sayre, 1955

IOWA GAMMA

Courtney Lyon Larson, 1995
Sue Moore Palmer, 1952
Jean Hoppe Steffenson, 1957
Belinda Thorne Tate, 1957
Linda Ligouri Tessau, 1967

IOWA ZETA

Sharon Karr Ritzman, 1960

KANSAS ALPHA

Margaret Sue Brown, 1964

KANSAS BETA

Laura Speer Varney, 1952

KENTUCKY ALPHA

Martha Hayes Dupps, 1946

LOUISIANA ALPHA

Marion Pratt Nolan, 1950

LOUISIANA BETA

Paula Crain Garrot, 1967
Patricia Dent Price, 1943

MARYLAND ALPHA

Mary Wood Wilson, 1947

MARYLAND BETA

Janice Trimmer Crowder, 1945

MICHIGAN ALPHA

Mary Looney Cleare, 1949

MICHIGAN GAMMA

Joan Lawler Stapleton, 1952

MINNESOTA ALPHA

Dona Syvrud Wagner, 1945

MISSISSIPPI ALPHA

Freddie Geiger Bellard, 1961

MISSISSIPPI BETA

Susan Walker Horlock, 1966

MISSOURI ALPHA

Ardis Sly Coe, 1949
Ellen Westfall Mering, 1952

NEBRASKA BETA

Betty Lysinger Reinhardt, 1944
Susan Powers Roux, 1965

NEVADA ALPHA

Barbara Ruark Allison, 1957

NEW MEXICO ALPHA

Patricia Jones Bisbee, 1956
Letitia Creveling Peirce, 1951

NEW MEXICO BETA

Karen Williams Shelton, 1976

NORTH CAROLINA ALPHA

Jeane White Dubose, 1944
Cecil Collins Scanlan, 1962

NORTH CAROLINA BETA

Lillian George Douglas, 1946

OHIO ALPHA

Sarah Weber Wild, 1956
Marjorie Young Wittich, 1949,
affiliated Ohio Beta

OHIO EPSILON

Marilyn Kratt Bennett, 1945

OHIO ZETA

Janet Wilcox Hallin, 1952,
affiliated Colorado Alpha

OKLAHOMA ALPHA

Anne Reeves Carrozza, 1944
Patricia Park Oldt, 1957
Josephine Boddy Temple, 1940

OKLAHOMA BETA

Maribeth Garnett Hill, 1954
Mary Helen Bogert Iselin, 1957
Jacque Oldham Shupe, 1945
Carolyn Crawford Welch, 1948

ONTARIO BETA

Monica Sznajder, 2018

OREGON ALPHA

Patricia Lakin Cudahy, 1948
Linda Pope Eskildsen, 1956
June Tyler Rogers, 1939

OREGON BETA

Mica Olsen Ward, 1996

OREGON GAMMA

Janelle Sevy Swanson, 1962

PENNSYLVANIA BETA

Betty Peterman Williams-Eberhart,
1946

TENNESSEE ALPHA

Mary Frances Holland Coleman, 1957

TENNESSEE BETA

Nancy Crosthwait Allen, 1982
Trish Champion Frist, 1958
Mary Sue Farmer Saltsman, 1949

TEXAS ALPHA

Mary-Martha Dickie Dossett, 1951
Sara McNeel Noble, 1952
Joan Loffland Russey, 1958
Sita Agnor Smith, 1948
Betty West Stedman, 1952

TEXAS BETA

Annie Allen Davis, 1952
Mary Lou Staley Guthrie, 1946
Peggy Markum Nabors, 1958

TEXAS GAMMA

Suzanne Ferrell Stiles, 1965
Mary Allison Wilcox, 2001

TEXAS DELTA

Taylor Anniebelle Dickson, 2006

TEXAS EPSILON

Dena Compton Devoto, 1976

TEXAS ZETA

Claire Worrell Haslam, 1979

VIRGINIA ALPHA

Joan Scheuermann
Anderson McGurk, 1951,
affiliated Louisiana Alpha
Mary Bernard Pace, 1952,
affiliated North Carolina Alpha
Elizabeth Starr Towles, 1950

WASHINGTON GAMMA

M. Joann McDonough Bargelt, 1956

WEST VIRGINIA ALPHA

Frances Reich Ulmer, 1940

WEST VIRGINIA GAMMA

Debbie Schumann DePollo, 1969

WISCONSIN ALPHA

Barb Dewey Cammett, 1950

WISCONSIN BETA

Dorothy Akin Jens, 1942

WYOMING ALPHA

Marilyn Marshall Kirkman, 1956
Joan Strange Westerhausen, 1951

Butterfly Sleeve Hoodie
\$36.74

PI BETA PHI

FOR THE LARGEST CURATED COLLECTION
OF PI PHI MERCHANDISE, VISIT

shoppibetaphi.com



Ring, ching ching

A. Lyanna Necklace, #LYANNA GP | **B.** 10K Lavalier with 18" Gold-filled Snake Chain, #L2649 10K/GF | **C.** Rory Necklace, #RORY GP | **D.** Holiday Ornament, #ORNA GP | **E.** Garnet and Aquamarine Badge with Diamond Point, #0332 10K | **F.** Crown Pearl Badge, #0201 10K | **G.** Crown Pearl Badge with Garnet Point, #0205 10K | **H.** Letter Guard, #J0100 10K | **I.** **NEW!** 2021 Virtual Convention Dangle, #2021 GP | **J.** VP Finance Dangle, #004 GP | **K.** Chapter President Dangle, #001A GP | **L.** Scholarship Pearl Dangle, #041 GP | **M.** Crest Guard, #9010 10K | **N.** Arrow Crest Bracelet, #1065 10K | **O.** Emma Ring, #0629 SS | **P.** Forever Ring, #001G 10K | **Q.** CZ Stackable Band Ring, #143864 SP/GP | **R.** Addy Ring, #ADDY SP/GP | **S.** Cushion Ring, #0452 SS | **T.** Arrow Wrap Ring, #3047 10K

HJGreek.com | 1.800.451.3304



Pi Beta Phi Fraternity
 1154 Town & Country Commons Drive
 Town & Country, MO 63017
 pibetaphi.org

NONPROFIT
 ORGANIZATION
 US POSTAGE
 PAID
 PERMIT NO 1828
 ST. LOUIS, MO

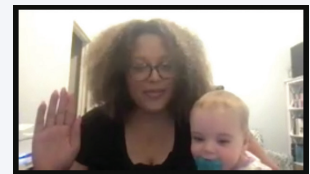
Linked Through Friendship

FOLLOW PI BETA PHI ON INSTAGRAM AND TWITTER @PIBETAPHIHQ AND ON FACEBOOK



Ally Banks

Last night was the first night of virtual Pi Beta Phi Convention! I so wish we could be in person, but I've loved getting to connect already with various alums and my fellow sisters! Look at this cute round up of Pi Beta Phi at Millikin University sisters who are virtually attending!! I love my sisters and this sisterhood so much!! #linkedthroughfriendship #pibetaphi



Brianna Henson

Today I was voted and installed as the first International Director of Diversity, Equity, and Inclusion @PiBetaPhiHQ. Of course, my little one had to partake in the pledge too. #LinkedThroughFriendship

Allison Harvey Griffin

Soooo proud of my Pi Phi sister, Davina Durgana, Member of Distinction and my "little." So very proud of all that you are doing to make the world a better, safer place for women and girls. #linkedthroughfriendship #empowHERment



Lynda Breyer Miller

#LinkedThroughFriendship looking forward to Convention 2021. ❤️❤️



@barilladanielle

Wish we were on a girls trip to Phoenix but so thankful to be a part of a group of strong women that goes over the top to be #LinkedThroughFriendship even when we have to be apart! Here's to being back in person in 2023!