



SHINE THROUGH

UNENDING LOYALTY. ENDLESS IMPACT.

CELEBRATING THE CAMPAIGN TO SUSTAIN PI BETA PHI.

THANK YOU!

This special publication celebrates every donor who made possible the incredible success of the **SHINE** THROUGH campaign by translating your unending loyalty to Pi Beta Phi into endless impact. As part of our ongoing responsibility to steward your investments, this piece replaces two issues of *The Bow*, Pi Beta Phi's official publication for donors to our Foundation. The next issue of *The Bow* will be published in Spring 2020.

On page 37, you will find highlights of the impact you have made possible for the last fiscal year, July 1, 2018 – June 30, 2019. Also recognized are the members of the Evelyn Peters Kyle Society for the same fiscal year. Evelyn Peters Kyle Society members make cumulative annual gifts to Pi Beta Phi Foundation of \$1,000 or more. We are grateful for their loyalty and commitment to Pi Beta Phi.

TODAY'S PHILANTHROPIC IMPACT INSPIRED BY YESTERDAY'S PHILANTHROPIC VISION

More than 100 years ago, Pi Beta Phi made an investment in the people of the Appalachian Mountains, by providing access to education. Through the years, many Pi Phis nurtured this investment. Our historic asset grew, and a few years ago it became time to determine how best to steward the realized investment going forward. Fraternity leaders used both their heads and hearts to ensure the intent of the original investment was respected as a legacy for all Pi Phis.

Recognizing the opportunity to dramatically impact Pi Beta Phi's member experience, Grand Council made the thoughtful decision to ensure the future of Pi Beta Phi by reinvesting proceeds from the sale of Pi Beta Phi's Appalachian property in our Foundation. The Fraternity became the lead donor and helped establish the priorities of the **SHINE** THROUGH campaign. The most significant portion of the Fraternity's gift went to establish the Elizabeth Clarke Helmick Literacy Endowment, named in honor of the Michigan Alpha Pi Phi who led our efforts in Gatlinburg, Tennessee, in its most formative years.

In total, the investment made by the Fraternity established seven new endowment funds. These endowment funds will grow and produce grant dollars for Pi Phi programs and initiatives in perpetuity. As you read this report on our campaign successes, you'll see that many donors have chosen to take advantage of these new giving opportunities by making gifts that will truly last forever.

Reinvesting in Pi Phi is an easy decision for most of us, but for all of us, it's a choice. Pi Beta Phi exists for two reasons: to provide lifelong enrichment to its members and to contribute to the betterment of society. I'm proud the success of the **SHINE** THROUGH campaign is linked to our sisterhood's earliest philanthropic efforts. I know the fruits of that early work, as well as our efforts today, bring us a little closer to achieving the vision of our sisterhood – I hope you are proud, too.



Mary Loy Tatum, Oklahoma Beta
Past Grand President



TABLE OF CONTENTS

SHINE THROUGH SUCCESS	5
COLLABORATIVE AND INNOVATIVE LEADERSHIP	6
LITERACY INITIATIVES THAT INSPIRE	8
ACCESS TO EDUCATION	10
HOUSING THAT DRIVES MEMBER SATISFACTION	12
GROWTH AND SUSTAINABILITY	14
GROWTH IN ENDOWMENTS	16
THE LEGACY OF DEFERRED GIVING	18
SHINE THROUGH DONORS	20
SUPPORT FROM CHAPTERS AND ALUMNAE CLUBS TO CONTINUE OUR SUCCESS	28
2018-2019 ANNUAL REPORT SUMMARY	36
EVELYN PETERS KYLE SOCIETY DONORS	38

DEAR SISTERS AND FRIENDS,

A few years ago, Pi Beta Phi set a course for one of our most ambitious goals ever: to complete a \$28 million campaign to sustain Pi Beta Phi. What an incredible few years it has been. Having raised more than \$32 million for our sisterhood is a great accomplishment — one I hope makes you proud to be a Pi Phi, and one that certainly could not have been reached without the support of each and every one of you.

During **SHINE** THROUGH, we invited you to be inspired and to inspire others. We invited you to focus your light — your loyalty — on future generations of Pi Phi leaders. We invited you to translate your unending loyalty into endless impact in this historic moment for our Fraternity.

So many of you have done just that. In these pages, you'll find stories of Pi Phi sisters and friends who've chosen to help ensure the future of our sisterhood. They represent more than 7,000 donors who have helped Pi Phi raise the bar for our own organization and for our Panhellenic sisters. The **SHINE** THROUGH campaign is the largest philanthropic endeavor in our Fraternity's history and the largest fundraising campaign ever assumed by a National Panhellenic Conference organization so far. Its success will allow Pi Phi to remain a premier organization for women, providing lifelong enrichment to its members and contributing to the betterment of society for generations of sisters to come.

Please consider my words and the many letters within this report as personal notes of gratitude for your support of this special endeavor for our sisterhood. As Pi Phis, we have so much of which to be proud. And yet, our greatest opportunities — opportunities empowered and emboldened by this campaign — still lie ahead. We look forward to seeing how you continue to let your light **SHINE** THROUGH for Pi Beta Phi.

In Pi Phi,



Jan Kincaid Clifford, Indiana Delta
Chairman, Campaign Cabinet





YOU HAVE PREPARED MEMBERS TO **LEAD** IN COLLABORATIVE AND INNOVATIVE WAYS.

More than ever before, we need a membership full of strong, confident leaders.

The issues facing the world today are more complex than ever before. They require leaders equipped with strategic thinking skills, vision and strong networks.

As a sisterhood, we must acknowledge the challenges facing Greek Life are significant, and could

threaten the very existence of Pi Beta Phi. Today's college campus is quickly evolving and too many people are questioning the relevance of sororities. However, we continue to be convinced that the experience Pi Phi offers is exactly what today's young women need.

“MORE EXPOSURE TO LEADERSHIP TRAINING CREATES BETTER WOMEN, LEADERS AND MENTORS. WE NEED TO DO ALL WE CAN DO TO GIVE OUR SISTERS THE TOOLS THEY NEED TO SUCCEED.”

Kelley Golden, Tennessee Gamma

Kelley used the **SHINE THROUGH** campaign as an opportunity to establish a Chapter Leadership Education Expendable (CLEE) fund for North Carolina Delta. Kelley supported North Carolina Delta as a Resident Leadership Development Consultant and understood that it's often younger chapters who need extra support to send members to leadership development events. This CLEE fund will provide resources for the chapter's leaders to attend Fraternity leadership training opportunities as well as leadership education experiences for the entire chapter.

Pi Beta Phi is uniquely qualified to empower women — both collegians and alumnae — equipping them with strategic thinking skills, vision and strong networks. We are both great believers that life is really all about experiences and relationships. By investing in Pi Phi, we are providing critical experiences for leadership development and securing a network of support for women that will last long beyond their collegiate careers.

Pi Beta Phi is rich in leadership development opportunities, with events such as College Weekend, Pi Beta Phi Leadership Institute and the Leadership Development Consultant program. We are grateful

for the opportunity to help more women benefit from these premier programs with our gift to the **SHINE THROUGH** campaign.

Paula Pace Shepherd

Paula Pace Shepherd, Texas Epsilon

Dr. David Shepherd

Dr. David Shepherd

\$3.1M
TO SUPPORT
LEADERSHIP



OF THE
\$32.3 MILLION
RAISED



YOU HAVE CHAMPIONED **LITERACY** INITIATIVES THAT INSPIRE READERS TO REACH THEIR TRUE POTENTIAL.

Pi Phi's commitment to literacy has inspired us not only to lead, but to lead with purpose in our communities.

I often hear stories about Pi Phis who have made literacy service their personal mission – not just during college, but for their entire adult lives. During the **SHINE THROUGH** campaign, I learned about one of those Pi Phis – Texas Alpha Barbara Beardmore Adams.

Careers took her family abroad and led Barbara to make a home in five different countries over a span

of 23 years. All the while, Barbara's deep commitment to volunteerism and philanthropy made an impact wherever the family went.

After returning to her stateside home of Houston, Barbara resumed the volunteer work at Texas Children's Hospital she had enjoyed before her family's travels. Barbara was part of the Pi Phi team who helped establish the Pi Beta Phi Patient/Family Library

PI PHI'S COMMITMENT TO LITERACY HAS STOOD THE TEST OF TIME AND IS A DEMONSTRATION OF LOYALTY IN ITSELF. FOR THIS REASON, LITERACY GIFTS ARE NOT ONLY AN INVESTMENT IN THE FUTURE — THE LIFE OF A CHILD — BUT ALSO AN INVESTMENT IN OUR HERITAGE — THE VERY FIBER OF PI BETA PHI.

at the hospital — a first of its kind. Barbara devoted more than 11,000 hours as a Texas Children's Hospital volunteer. She served as a trustee on library boards in Houston and her home state of Oklahoma and continued to be a dedicated Pi Phi.

After the passing of Barbara and her husband, I learned Pi Beta Phi Foundation was named as a beneficiary of their estate. The Adams' son took great care to ensure their gift would align with his parents' long-standing interests, believing Barbara's passion for literacy was in great part due to Pi Phi. The result of their gift was the establishment of a new endowment: the Barbara Beardmore Adams, Texas Alpha, Literacy Endowment, which will support Pi Beta Phi's Read > Lead > Achieve® literacy initiatives in perpetuity. As an endowment fund, only the earnings from the Adams' gift will be used to make grants to Pi Phi programs, ensuring Barbara's commitment to literacy will endure forever.

So many Pi Phis are purpose-driven community leaders — like Barbara — and it's my honor to help them make an impact. I am so proud of what our sisterhood has accomplished, and will continue to accomplish, to ensure a more literate and productive society.



Hallee Winnie, Michigan Gamma
Executive Director,
Pi Beta Phi Foundation

\$4.8M
TO SUPPORT
LITERACY



OF THE
\$32.3 MILLION
RAISED

YOU HAVE PROVIDED COLLEGIANS AND ALUMNAE WITH FINANCIAL SUPPORT TO ACCESS INCREASINGLY EXPENSIVE **EDUCATION.**

It's no secret that Pi Phis are all connected by our desire for education — after all, education is at the core of Pi Phi. As young women ahead of their time, our 12 founders sought education when few universities even admitted women. They were able to endure by relying on one another and the support of the sisterhood they created.

Today, Pi Phi's scholarship program ensures academic achievement remains at the center of our membership experience. With awards for both collegians and alumnae, our scholarships echo our founders' commitment to education

by assisting as many members as possible in pursuing — and reaching — their academic goals.

While membership in Pi Phi brings the joy and support of a community of sisters, I believe it should also bring the security of financial support to access increasingly expensive education. As a recipient of scholarships during my college years, I know firsthand how important they are. Now that I have the resources to give back, I'm thrilled to help by paying it forward.

Our scholarship program brings our Fraternity's mission — to develop

women of intellect and integrity — to fruition. Just as we continue working together to uphold our core values and fulfill our mission, we must also continue to provide scholarships that allow our sisters to pursue their studies and personal development. I know there will always be a need to help our sisters obtain the education they need to succeed. I chose to use the **SHINE** THROUGH campaign as an opportunity to invest in our members' education and in their future.



Susan Crane Kyle, Indiana Beta



\$4.9M
TO SUPPORT
EDUCATION



OF THE
\$32.3 MILLION
RAISED

“YOU’VE HEARD PI PHI SAY IT BEFORE: BEING ABLE TO ATTEND COLLEGE REMAINS A PRIVILEGE, AND ONE THAT COMES AT A COST. AS THAT COST CONTINUES TO RISE, IT’S CRITICAL FOR OUR SCHOLARSHIP PROGRAM TO GROW AS WELL. OUR FOUNDATION’S ABILITY TO AWARD MORE SCHOLARSHIPS OF LARGER AMOUNTS WILL HELP ENSURE OUR SISTERS STAY IN SCHOOL.”

Betsy West McCune, Missouri Alpha

Director of Operations and Programs, Pi Beta Phi Foundation



“When donors invest in housing, they invest in an opportunity for young women to have a once-in-a-lifetime experience. An opportunity to live surrounded by women who share their values and commitments in the years they most need the support and encouragement of their peers. Housing is complex and needs are changing. Our sisters need living and meeting spaces that support their educational pursuits. With the support of donors, we can continue to provide a premier housing experience for future Pi Phis.”

Libby Gilkison Cannon, Missouri Alpha
Senior Director of Housing, Fraternity
Housing Corporation

YOU HAVE ADVANCED COLLEGIATE **HOUSING** THAT DRIVES MEMBER SATISFACTION.

Maintaining a competitive living and learning environment is vital to the future of so many Pi Phi chapters.

For this reason, I'm proud to have made my **SHINE THROUGH** campaign gift to support renovation and expansion efforts to the Indiana Gamma Chapter facility I once called home.

Currently, the Indiana Gamma Chapter house lacks a space large enough to hold all members for weekly chapter meetings. The dining room is too small to accommodate all members at one dinner seating. For the facility to remain a competitive living option for today's college students, critical renovations and updates are needed in the kitchen, bathrooms and bedrooms.

While my college experience was wonderful — making lifelong friendships, experiencing leadership opportunities and learning the importance of philanthropic service — only as an alumna have I fully understood the magnitude of

what it means to be a member of Pi Beta Phi. I know the chapter house is the setting for my fondest college memories. I know some of the greatest lessons of my college years were learned inside the chapter house. And, I know the experience of living with my sisters, who shared my values, contributed to my success. I also know that I must do what I can to ensure future generations of Pi Phi women have the opportunities I did while living in the Indiana Gamma Chapter house.



Margy Harm Moorhead,
Indiana Gamma

\$3M
TO SUPPORT
HOUSING



OF THE
\$32.3 MILLION
RAISED

YOU HAVE BUILT **OPERATIONAL RESOURCES** TO LEVERAGE GROWTH AND SUSTAINABILITY.

Pi Phi is a big part of our lives. We say “our lives” because *both* of us are invested in Pi Phi. Even though only one of us is a Pi Phi (or a member of any fraternity, for that matter), we both consider Pi Beta Phi Foundation a philanthropic priority because we value its mission. We have seen the faces of the collegians and alumnae impacted and lives changed by the work our dollars support. Since the very beginning of its history, we have seen the Foundation grow in both assets and impact. Through the years, the leadership of the Foundation has remained strong, and we have confidence in the Trustees to make decisions in the best interest of Pi Beta Phi. With Pi Phi playing such an important role in our lives and our trust in its governance, it was a natural decision to make the Foundation a significant beneficiary of our living trust.

We chose to designate our gift to the Friendship Fund, because while we wholeheartedly believe in scholarships, leadership and all the other good things the Foundation

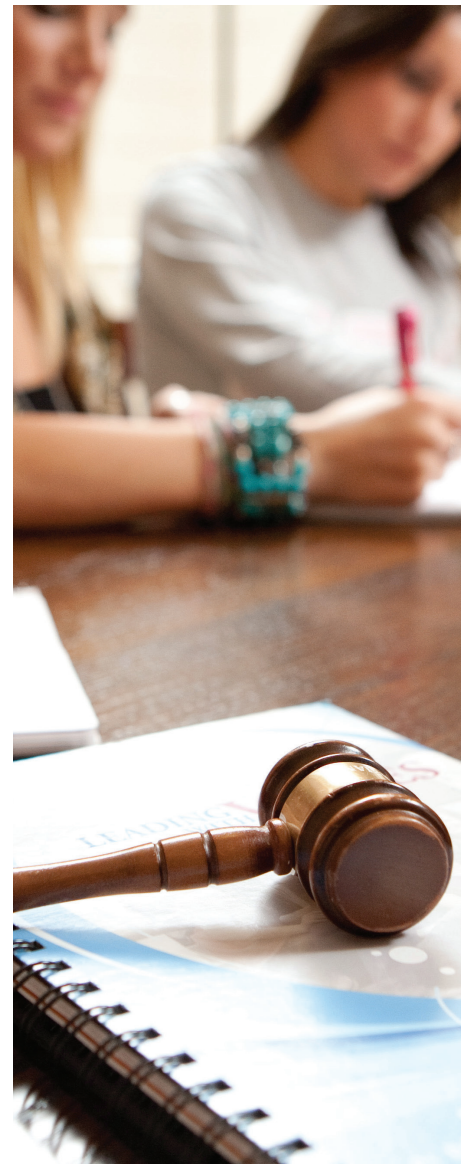
makes possible, we know that giving unrestricted dollars supports the mechanism that keeps it all going. Without a strong Friendship Fund, the scholarships couldn't be fairly awarded and distributed, the leadership development programs wouldn't be fully funded, the funds wouldn't be responsibly managed, the gifts couldn't be properly stewarded and so much more. By giving to the Friendship Fund, we've told the Foundation to put our gifts to the best possible use to ensure the future of the sisterhood, including bringing more donors to the same commitment we've made! And while our most significant investment in Pi Phi is in the form of a bequest, we are both proud to be monthly donors supporting the most critical needs of Pi Phi today.

Ruth McIntyre

Dr. Ruth Henderson McIntyre,
South Carolina Alpha

David McIntyre

Dr. David McIntyre





“I BELIEVE IN THE POWER OF PI PHI, IN ITS MISSION AND ITS FOCUS ON CHANGING THE WORLD THROUGH WOMEN IN LEADERSHIP. THE FOUNDATION’S ONLY PURPOSE IS THE SUCCESS OF PI PHI’S MISSION. THAT GIVES ME TOTAL CONFIDENCE THAT MY INVESTMENT IN THE FOUNDATION WILL HAVE STELLAR RETURNS.”

Kathy Swinea Nevill, Tennessee Gamma
Past President, Pi Beta Phi Foundation

\$14.4M
TO SUPPORT
OPERATIONS



OF THE
\$32.3 MILLION
RAISED



While celebrating the 150th birthday of our Fraternity was certainly a good reason to launch a transformational campaign, the true impetus for the **SHINE THROUGH** campaign was a need to sustain our sisterhood. Developing women of intellect and integrity takes resources. As we looked at our next 150 years, it became clear that if Pi Beta Phi was to continue to do the work we do, we'd need more resources.

I remember the very early phases of this campaign. A small committee came together to cast a vision for what we thought we might accomplish and how we might be able to do it. The early goals we set for the campaign were far surpassed before we even launched the effort at Convention 2017.

As the campaign took shape, we realized the most significant impact would come from growing our

endowment dollars. Endowment gifts are invested, and proceeds of those investments are used to support Pi Phi's needs. In most cases, the original gift stays intact at its original amount or grows. Endowment gifts produce new dollars for Pi Beta Phi in perpetuity. If this campaign was truly about the future of Pi Phi, we knew a focus on endowment giving would be a critical component.

WHAT A TESTAMENT TO OUR SISTERHOOD!

“Growing the Foundation’s capacity was a clear goal of this campaign from the forefront. And it’s no secret that donors like you have made a historic impact on our sisterhood. With your support, the Foundation has grown our staff to better care for and connect with our increasing number of donors, and we’ve intentionally recruited volunteer leaders with the skills needed to ensure we’re making the most thoughtful decisions in stewardship of your investments. While we have much to celebrate, the increased capacity you have helped to create with the **SHINE THROUGH** campaign is what excites me the most. I hope to ensure all donors feel their investment in our Foundation is well cared for. With more gifts comes more responsibility — but it’s responsibility we can handle. We’re so very grateful for the opportunity!”

Hallee Winnie, Michigan Gamma
Executive Director, Pi Beta Phi Foundation

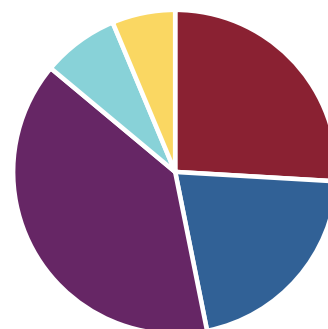
I’m in awe of what donors to the **SHINE THROUGH** campaign have accomplished. Prior to the start of the campaign, our Foundation managed slightly more than \$6 million in endowment funds. Today, our total endowment has surpassed \$14 million. From this vantage, the future of Pi Phi is certainly bright — and shining through for future generations!

Beth Seidelhuber Sordi

Beth Seidelhuber Sordi,
California Kappa
Past President, Pi Beta Phi Foundation

The **SHINE THROUGH** campaign resulted in **more than 125%** growth of the endowed funds held by Pi Beta Phi Foundation.

LEADERSHIP	\$2,116,218.00
SCHOLARSHIP	\$1,707,211.04
LITERACY	\$3,200,421.13
HOUSING	\$623,115.00
UNRESTRICTED	\$514,795.00



MAKING IMPACT THROUGH YOUR LEGACY



“There’s no question that membership in Pi Beta Phi shaped the woman I became after college. I learned skills as a member that I didn’t even realize at the time, such as time management, diplomacy and problem-solving. The support and encouragement from my sisters helped me achieve things I otherwise would have thought beyond my ability, and their friendship still lifts me up today. Whatever success I’ve had since then is grounded in these things. I truly believe that Pi Phi develops confident women leaders, and I hope that every young woman has the same opportunity in the future. When my husband and I were making our estate plans and decided we wanted to leave a legacy beyond bequests to family, we agreed that Pi Beta Phi was at the top of the list.”

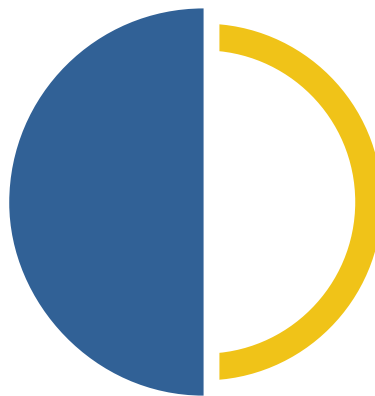
Penny Proctor, Michigan Alpha

When considering a commitment to the **SHINE THROUGH** campaign, my husband Bill and I knew this was the time to make a special gift. Because Pi Phi has given me so much joy and so many opportunities for growth, I wanted my legacy to be an impact on the sisterhood I hold so dear. Therefore Bill and I decided to list Pi Beta Phi Foundation as a beneficiary of our estate. By doing so, we have the opportunity to celebrate the most significant, exciting charitable decision of our lives now. I feel satisfied knowing our deferred gift will achieve our

vision, and because we’ve worked with the Foundation to document our plans, I know Pi Phi will have even greater ability to plan for the future of our sisterhood in the years to come. This planned gift is an expression of my love for Pi Beta Phi and what I consider my sincerest demonstration of just how much I cherish my Pi Phi membership and believe in its possibilities for future generations.

A handwritten signature in black ink, reading "Sally Shoemaker".

Sally Shoemaker, Arizona Beta



50%
OF THE **TOTAL** GIFTS
CELEBRATED AS PART OF
THE **SHINE THROUGH**
CAMPAIGN **ARE**
DEFERRED GIFTS
AND WILL BE REALIZED
IN THE FUTURE.

DONORS CHOOSE TO MAKE PI PHI PART OF THEIR LEGACY

Deferred gifts, also called planned or estate gifts, often provide donors with the greatest personal ability to have significant impact. During the **SHINE** THROUGH campaign, 76 donors chose to inform the Foundation of their deferred gifts and quantify their commitments so they could be celebrated as part of the campaign. Their gifts supported the campaign goal at their full present value, or at a more conservative value comfortable to the donor for recognition. With their deferred gifts, these donors are also celebrated as members of Pi Beta Phi's Marianne Reid Wild Society.

Jody Morse Al-Saigh, New York Alpha

The Family of Joanie MaGirl Arnold,
Texas Beta

Sissy Phillips Austin, Oklahoma Alpha

Patti Root Bash, Indiana Beta

Fran DeSimone Becque, New York Alpha

Diane M. Bielman, California Eta

Daphney Rose Rivera Bitanga,
California Eta

Barbara Anderson Blake, California Delta

Barbie Ann Blake, California Gamma

Roberta Boyd Bragan, West Virginia
Gamma & Rick Bragan

Hannah Muehlbauer Brenner,
Indiana Gamma

Kathie Erickson Bridges, Utah Alpha

Susan Bruch, Michigan Alpha

Cynthia Stafford Burley, Ohio Delta

Eugene M. Busche

Donna Lynn Butterworth, Virginia Eta

Kellee A. Casebeer, Oregon Gamma

Toni Cerino, Virginia Delta

Clare Buie Chaney, Texas Alpha

Trudy Hartzell Clark, Maryland Beta

Jan Kincaid Clifford, Indiana Delta,
Katie Clifford, California Omicron,
Michael Clifford & Brian Clifford

Leslie Willard Dunsworth, Arizona Beta

Shawn Eagleburger & Chase Sechrist

Suzette Thompson Farrar, Colorado Delta

Ellen Frances Ferringer, Indiana Gamma

Jeannine Van Wagenen Funk,
Nevada Alpha

Terre McFillen Hall, Ohio Alpha

Anonymous, Mississippi Beta

Carla Hashley, Michigan Epsilon

Jennifer Windell Hazelton, Virginia Eta

Katey Newell Hobbs, Missouri Alpha

Laurie Teresa Hoskins, Iowa Alpha

Bimi Lane Huebner, New Mexico Beta

Jayne A. Hultman, Michigan Gamma

Jacqueline M. Jasek, Indiana Gamma

Mary Jane Buchele Johnson, Illinois Eta

Madalyn Marchman Jones,
Arkansas Alpha

Caitlin Pierce Kissee, Missouri Gamma
& T. Weston Kissee

Kathi Caldwell Kleinman, Arizona Alpha
& Brent Kleinman

Marnie Rae Lee, Alberta Alpha

Janice Worthington Lisko, Oklahoma Beta

Kitty Sue Little, Oklahoma Alpha

Leisa Ebeling Lowrey, Ohio Eta

Rae Wohlhueter Maier, Kentucky Beta

Peggy Claire Malone, Georgia Alpha

Toni Martinovich, California Eta

Dr. Ruth Henderson McIntyre,
South Carolina Alpha
& Dr. David McIntyre

Ana Mancebo Miller, Texas Beta

Kathy Swinea Nevill, Tennessee Gamma

Kim OBrien, Ohio Zeta

Audrey Miller Pennings, Arkansas Alpha

Bobbie Bliss Pittman, Wisconsin Beta

Wendy Labreche Pratt,
Massachusetts Beta

Karen Consalus Price, Missouri Alpha

Penny Ann Proctor, Michigan Alpha

Missy A. Reams, Iowa Eta

Vanessa Ann Redman, Texas Eta

Tina Lynn Rivard, Pennsylvania Theta

Robin McPherson Rohrback, Florida Beta

Amanda Rychtanek, Indiana Theta

Paula Pace Shepherd, Texas Epsilon
& Dr. David Shepherd

Sally Minning Shoemaker, Arizona Beta
& Bill Shoemaker

Romy Skaper, Arizona Beta

Beth Seidelhuber Sordi, California Kappa

Kathy Wager Sprague, Alabama Gamma

Mary Rakow Tanner, Maryland Beta

Emily Russell Tarr, Texas Beta

Mary Loy Tatum, Oklahoma Beta

Karen Sulley Thorn, Nebraska Beta

Mary Alice Classen Tinari,
North Carolina Beta

Kim Kimmy Tomczak, Washington Alpha

Rebecca Nekervis Walker, Kentucky Beta

Carol Inge Warren, North Carolina Beta

Joanie Platt Welch, Washington Gamma

Juli Holmes Willeman, Iowa Beta
& Chris Willeman

Carolyn Thompson Zachritz,
Oklahoma Alpha

CAMPAIGN DONOR ROLL

More than 7,000 donors have demonstrated their unending loyalty to Pi Beta Phi by making a gift to support the goals of the **SHINE THROUGH** campaign. Gifts range from \$1 to \$6 million, and each continues to make an endless impact. Below is a listing of donors who supported the campaign with a cumulative gift of \$5,000 or greater. For the complete listing of campaign donors, visit pibetaphifoundation.org/campaign.

\$6,000,000

Pi Beta Phi Fraternity for Women

Juli Holmes Willeman, Iowa Beta
& Chris Willeman ☀

Kathi Caldwell Kleinman,
Arizona Alpha
& Brent Kleinman ☀

\$1,000,000 and above

Trudy Hartzell Clark,
Maryland Beta ☀
Jan Kincaid Clifford, Indiana Delta,
Katie Clifford, California Omicron,
Michael Clifford
& Brian Clifford ☀
Kim O'Brien, Ohio Zeta ☀
Sally Minning Shoemaker, Arizona
Beta & Bill Shoemaker ☀

\$250,000 - \$499,999

Susan Bruch, Michigan Alpha ☀
Cynthia Stafford Burley,
Ohio Delta ☀
Jayne A. Hultman,
Michigan Gamma ☀
Kathy Swinea Nevill,
Tennessee Gamma ☀
Penny Ann Proctor,
Michigan Alpha ☀

Rae Wohlhueter Maier,
Kentucky Beta ☀
Bobbie Bliss Pittman,
Wisconsin Beta ☀
Lisa Gamel Scott, Colorado Alpha
& Diane Malloy Lighthall,
Colorado Beta
Paula Pace Shepherd, Texas Epsilon
& Dr. David Shepherd ☀
Washington Alpha Chapter
The Wilbur and Hilda Glenn
Family Foundation

\$500,000 - \$999,999

Barbara Beardmore Adams,
Texas Alpha
Sissy Phillips Austin,
Oklahoma Alpha ☀
Kathy Wager Sprague,
Alabama Gamma ☀
Dr. Ruth Henderson McIntyre,
South Carolina Alpha
& Dr. David McIntyre ☀

\$150,000 - \$249,999

Diane M. Bielman, California Eta ☀
Roberta Boyd Bragan, West Virginia
Gamma & Rick Bragan ☀
Donna Lynn Butterworth,
Virginia Eta ☀
Toni Cerino, Virginia Delta ☀
Patricia Rand Glenn, Arkansas Alpha
Mary Jane Buchele Johnson,
Illinois Eta ☀

\$100,000 - \$149,999

Anonymous, Mississippi Beta ☀
Arkansas Alpha Chapter
Barbara Anderson Blake,
California Delta ☀
Barbie Ann Blake,
California Gamma ☀
Patricia Rose Carlton, Arkansas Alpha

Kellee A. Casebeer,
Oregon Gamma ☀️
Ellen Frances Ferringer,
Indiana Gamma ☀️
Susan Heather Henricks Lenkin,
Arizona Alpha
Gibbs-McKittrick-Engelbrecht Family
Kansas Alpha Chapter
Susan Crane Kyle, Indiana Beta
Toni Martinovich, California Eta ☀️
Mary Grable McLeod,
Illinois Alpha ☀️
Susan Consalus Miller,
Missouri Alpha
Mississippi Beta Chapter
Ohio Alpha Chapter
Vanessa Ann Redman, Texas Eta ☀️
Beth Seidelhuber Sordi,
California Kappa ☀️
Mary Rakow Tanner,
Maryland Beta ☀️
Mary Loy Tatum, Oklahoma Beta ☀️
Texas Delta Chapter
Texas Eta Chapter
Kim Kimmy Tomczak,
Washington Alpha ☀️
Pam Joy Turbeville, Arizona Alpha

Lisa Beliles Walsh, Missouri Alpha
Carol Inge Warren,
North Carolina Beta ☀️
Elizabeth Montgomery Wilson,
Texas Beta

\$75,000 - \$99,999

Joanne Hunt Hook, Missouri Alpha
Wendy Labreche Pratt,
Massachusetts Beta ☀️
Emily Russell Tarr, Texas Beta ☀️

\$50,000 - \$74,999

Anonymous, Wisconsin Gamma
Dee Danford Acuff, Missouri Alpha
Alabama Beta Chapter
Anne O'Connell Albrecht,
Missouri Alpha
Arizona Beta Chapter
The Family of Joanie MaGirl Arnold,
Texas Beta ☀️
California Alpha Chapter
California Gamma
California Theta Chapter
Lou Ann Montgomery Carter,
Oklahoma Alpha
Colorado Gamma Chapter

Dallas, TX Alumnae Club
MaryBeth Rhyne Dykes,
Alabama Gamma
Malinda Berry Fischer,
Oklahoma Beta
Florida Beta Chapter
Terre McFillen Hall, Ohio Alpha ☀️
Donna Helble, Iowa Beta
Houston, Texas Alumnae Club
and Houston Pi Beta Phi
Foundation
Bimi Lane Huebner,
New Mexico Beta ☀️
Madalyn Marchman Jones,
Arkansas Alpha ☀️
Marnie Rae Lee, Alberta Alpha ☀️
Janice Worthington Lisko,
Oklahoma Beta ☀️
Ana Mancebo Miller,
Texas Beta ☀️
Ana Mancebo Miller, Texas Beta
& David Miller
Mississippi Gamma Chapter
Oklahoma Alpha Chapter
Amanda Rychtanek,
Indiana Theta ☀️

“To say attending Purdue University and joining Pi Phi changed my life is an understatement. My parents worked hard to save and afford my degree. They gifted me my membership in Pi Beta Phi. My father told me investing in my college education and Pi Phi experience was the best money he ever spent. I follow their lead with my giving to Pi Phi.”

Jan Kincaid Clifford, Indiana Delta

“What an honor to support Pi Phi’s continuing efforts to grow women of integrity and character. An opportunity to invest in this future? Count me in!”

Trudy Hartzell Clark, Maryland Beta

Celia Ann Mills Saterbak,

Alabama Alpha

Deb Jackowniak Scarlett,

Illinois Alpha ☀️

Texas Alpha Chapter

Karen Sulley Thorn,

Nebraska Beta ☀️

Joanie Platt Welch,

Washington Gamma ☀️

Paige Schroeder Yost,

Missouri Alpha

\$25,000 - \$49,999

Alabama Gamma Chapter

Arizona Alpha Chapter

Daphney Rose Rivera Bitanga,

California Eta ☀️

California Beta Chapter

California Kappa Chapter

California Nu Chapter

California Zeta Chapter

Colorado Alpha Chapter

Dennis J Heid Memorial

Scholarship Foundation

Joanne Flowers Duncan,

South Carolina Alpha

Nancy Payne Ellis, Oklahoma Beta

Florida Delta Chapter

Karin Daniel Frye, Alabama Gamma

Greater Kansas City Alumnae Club

Anne Paule Hall, Iowa Gamma

Mary Ann Behlen Hruska,

Nebraska Beta

Illinois Kappa Chapter

Sharon Jett, Texas Delta ☀️

The Jones Family Gift

Nancy Barclay Jones, Missouri Alpha

Jenna Jones Oesch, Missouri Alpha

Gina Garrison Jones, Nebraska Beta

Caitlin Pierce Kissee,

Missouri Gamma

& T. Weston Kissee ☀️

Sarah Goodner Leffen, Texas Delta

Kitty Sue Little, Oklahoma Alpha ☀️

Louisiana Beta Chapter

Mississippi Alpha Chapter

Missouri Alpha Chapter

Nashville, TN Alumnae Club

Oklahoma Beta Chapter

Oklahoma City, OK Alumnae Club

Oregon Alpha Chapter

Audrey Miller Pennings,

Arkansas Alpha ☀️

Ann Dudgeon Phy, Texas Alpha

Nancy Fogle Pollard,

Arkansas Beta & Larry Pollard

Texas Gamma Chapter

Texas Zeta Chapter

Gwendolyn Weiner, Arizona Alpha

Carrie Annette Ziemak,

Massachusetts Beta

\$15,000 - \$24,999

Hannah Muehlbauer Brenner,

Indiana Gamma ☀️

California Epsilon Chapter

California Mu Chapter

California Omicron Chapter

Elizabeth Yarbrough Cross,

Arkansas Alpha

Kathy Kontor Dougherty,

Texas Epsilon

Suzette Thompson Farrar,

Colorado Delta ☀️

Florida Alpha Chapter

Florida Epsilon Chapter

Georgia Alpha Chapter

Kelley Golden, Tennessee Gamma

Betty Staggs Huckabay,

Oklahoma Alpha ☀️

Illinois Zeta Chapter

Indiana Beta Chapter

Iowa Gamma Chapter

Lesley Whitehead Jagers,

Kansas Beta

Kansas Alpha Chapter Housing

Corporation

Kansas Beta Chapter

Kay Kenimer, Georgia Alpha

Heidi Dake Keogh, Colorado Alpha

Barbara McReynolds LaMaster,

Kentucky Beta

Margo Wilton Lesser,

California Gamma

Betty Blades Lofton, Indiana Gamma

Leisa Ebeling Lowrey, Ohio Eta ☀️

Peggy Claire Malone,

Georgia Alpha ☀️

Massachusetts Gamma Chapter
 Michigan Alpha Chapter
 Michigan Beta Chapter
 Michigan Gamma Chapter
 Minnesota Alpha Chapter
 Missouri Beta Chapter
 Susan Mitchell Smith, Missouri Alpha
 Montana Alpha Chapter
 Margy Harm Moorhead,
 Indiana Gamma
 Sarah (Sis) Mullis,
 South Carolina Alpha
 North Carolina Delta Chapter
 Northern Virginia Alumnae Club
 Ohio Beta Chapter
 Pi Beta Phi Fraternity Housing
 Corporation
 Pennsylvania Gamma Chapter
 Phoenix, AZ Alumnae Club
 Tina Lynn Rivard,
 Pennsylvania Theta ☀️
 Robin McPherson Rohrback,
 Florida Beta ☀️
 Sharon Edwards Schachter,
 South Carolina Alpha
 & Phyllis Rhoads Edwards,
 Pennsylvania Gamma
 Vivian Long Shah, New York Eta

South Dakota Alpha Chapter
 Tennessee Beta Chapter
 Tennessee Delta Chapter
 Texas Beta Chapter
 Texas Epsilon Chapter
 Mary Alice Classen Tinari,
 North Carolina Beta ☀️
 Virginia Epsilon Chapter
 Virginia Zeta Chapter
 Washington Beta Chapter
 Sally Sewell Wightman,
 Oklahoma Alpha ☀️
 Wisconsin Alpha Chapter

\$10,000 - \$14,999

Anonymous, Colorado Gamma
 Arizona Gamma Chapter
 Patti Root Bash, Indiana Beta ☀️
 Maja Tanaka Berge, Oregon Alpha ☀️
 Oriana Rebecca Bertucci,
 Ontario Gamma
 Kathie Erickson Bridges,
 Utah Alpha ☀️
 Sally Hewell Brown, Texas Delta ☀️
 California Delta Chapter
 California Eta Chapter
 California Xi Chapter

Karen Shelton Chevalier,
 California Delta
 Lyn Arnot Clark, Texas Alpha
 Jordan Clark, Alabama Beta
 Colorado Delta Chapter
 Connecticut Alpha Chapter
 Jennifer Sheffield Crain,
 Arkansas Alpha
 D.C. Alpha Chapter
 Delaware Alpha Chapter
 Leslie Willard Dunsworth,
 Arizona Beta ☀️
 Shawn Eagleburger
 & Chase Sechrist ☀️
 Harry G. Ebeling
 Martha Bowman Ebeling, Ohio Delta
 Georgia Alpha Chapter House
 Corporation
 Janet Wickham Gregory,
 Michigan Beta
 Mary Ellen Beneke Hale,
 Indiana Gamma
 Pamela Williams Hallin,
 Arkansas Alpha
 Carla Hashley, Michigan Epsilon ☀️
 Jennifer Windell Hazelton,
 Virginia Eta ☀️
 Indiana Delta Chapter

“My parents were never financially able to finish school, but they never stopped learning. It was important to them that my sister and I attended and graduated college. Bill and I are in a position to help others, and I know it would make my mother and father very proud that we’ve chosen to do so.”

Sally Minning Shoemaker, Arizona Beta

Indiana Gamma Chapter
Jacqueline M. Jasek,
Indiana Gamma ☀️
Jacque Bankston Johnston,
Alabama Gamma
Gene Chambers Jones,
Arkansas Alpha
Kentucky Alpha Chapter
Kentucky Beta Chapter
Louisiana Alpha Chapter
Lisa Nicole Masters, Georgia Alpha
Olga and Robert McDonough
Nebraska Beta Chapter
Nebraska Gamma Chapter

New York Eta Chapter
North Carolina Alpha Chapter
Ohio Kappa Chapter
Ohio Theta Chapter
Ontario Beta Chapter
Marion Swanson Oster,
California Zeta
Ann Hall Patten, Missouri Alpha
Georgia Alpha Chapter Housing
Corporation
Karen Consalus Price,
Missouri Alpha ☀️
Missy A. Reams, Iowa Eta ☀️

Dee Rippetoe Richardson,
Oklahoma Beta
Liz Hoover Rotan, Texas Beta
Jane Landreth Russell,
Arizona Alpha ☀️
Beverly Cregg Schafer,
Oklahoma Beta
Jill Lanman Schneider,
Alabama Gamma
Sign of The Arrow
Romy Skaper, Arizona Beta ☀️
South Carolina Alpha Chapter
Lori Swart Sporer, Kansas Beta
St. Louis, MO Alumnae Club
Cindy Rice Svec, Kansas Beta
Tennessee Gamma Chapter
Melanie Merrill Thompson,
Kansas Beta
Utah Alpha Chapter
Virginia Eta Chapter
Virginia Gamma Chapter
Rebecca Nekervis Walker,
Kentucky Beta ☀️

“As a volunteer for the last 15 years, I know our Foundation is a good steward of donors’ gifts. How could I not support our Foundation when it brings me such joy?”

Kim OBrien, Ohio Zeta

Marty Reynolds White, Kansas Beta
Linda Lake Young, Oklahoma Alpha
Carolyn Thompson Zachritz,
Oklahoma Alpha ☀

\$5,000 - \$9,999

Sharon Abeyta-Levey,
New Mexico Beta
Jill Klabzuba Ahrens,
Washington Gamma
Alabama Alpha Chapter
Jody Morse Al-Saigh,
New York Alpha ☀
Marie Baldazo Andreasen,
California Eta
Tanya Phillips Barnes,
Arkansas Alpha
Betty Hogan Bechtel,
California Beta
Fran DeSimone Becque,
New York Alpha ☀
Bellevue-Eastside, WA
Alumnae Club

Anne Taylor Blatherwick,
Kansas Alpha
Caton Metzler Bredar,
Illinois Beta-Delta
Martha Posey Burke, Oklahoma Beta
Eugene M. Busche
Julie Carney, Texas Beta ☀
Clare Buie Chaney, Texas Alpha ☀
Maureen O'Sullivan Clayton,
Georgia Alpha
Colorado Epsilon Chapter
Terry Zoller Cross, Arizona Beta
Mandy Boreing Dillard,
Arkansas Alpha
Kim Barger Durand, Oregon Alpha
Debbie Walker Duszak,
West Virginia Alpha
Julia Buckingham Edelmann,
New Mexico Alpha
Michele Wilding Eichermueller,
Oregon Delta
Emory McGinnis Eison,
Mississippi Beta

Jenny Arnold Elkins, Texas Alpha
Flowers Family Foundation
Fort Collins, CO Alumnae Club
S. D. Bechtel, Jr. Foundation
Jeannine Van Wagenen Funk,
Nevada Alpha ☀
Jane McNeill George, Ohio Alpha
Eileen O'Neil Grigutis, Kentucky Beta
Jensy Fulbright Hale,
Arkansas Alpha
Misty McIlroy Hawkins,
Arkansas Alpha
Alison Veit Heafitz, Illinois Zeta
& Jonathan Heafitz
Katey Newell Hobbs,
Missouri Alpha ☀
Cynthia McShan Hoffman,
Texas Gamma
Mary Morns Holman, Arizona Alpha
Greer Horne, Virginia Zeta
Laurie Teresa Hoskins, Iowa Alpha ☀
Brenda Foster Huffman,
Texas Epsilon
Linda Noel Ibsen, Colorado Beta
Idaho Alpha Chapter
Illinois Epsilon Chapter
Illinois Eta Chapter
Illinois Theta Chapter
Indiana Epsilon Chapter
Indiana Zeta Chapter
Iowa Beta Chapter
Kirstin Swindler Johnson,
Arkansas Alpha
Amy Bader Keirle, Georgia Alpha
Charline Sage Ketcherside,
New Mexico Alpha ☀
Robin Cypert King, Oklahoma Beta

Shelly Hamm Lambertz,
Oklahoma Beta

Chantel Hagner Lanier,
Florida Epsilon & John Lanier

Brenda Laroche, Arkansas Alpha

Paul Lawrence

Cynthia L. Leaphart, MD, MBA,
South Carolina Beta

Carolyn Pavletich Lesh, Texas Delta

Tiffany Ward Lindsey,
Arkansas Alpha

Erin Palla Lindsey, California Kappa

Lowell A. Weber Revocable Trust

Leslie Atkinson Marshall,
Connecticut Alpha

Maryland Gamma Chapter

Lauren Tatum Matocha, Texas Delta

Sherry and Randy McCaslin

Dana Downing McElroy,
Oklahoma Beta

Kathleen Ann Meriano,
New York Eta

Heather Wilson Miller,
New Mexico Beta

Missouri Gamma Chapter

New Mexico Alpha Chapter

New York Delta Chapter

North Dakota Alpha Chapter

Julie Ternes Oakhill, Arkansas Alpha

Ohio Epsilon Chapter

Ohio Iota Chapter

Ohio Lambda Chapter

Pasadena, CA Alumnae Club

Pennsylvania Eta Chapter

Pi Beta Phi Foundation of
Oklahoma City

Kate Blatherwick Pickert,
Kansas Alpha



Jenn Plagman-Galvin, Iowa Gamma
& Jeremy Galvin

Jan Turner Polk, Oklahoma Beta

Jenny Miller Pratt, Indiana Alpha

Patty Shelton Pyle, Arkansas Alpha

Amanda Marie Reid, Michigan Alpha

Lisa Rede Roman, New Mexico Beta

Ann Bodenhamer Rosso,
Arkansas Alpha

Alisa Brooks Rudlang,
Minnesota Alpha

Jean Wirths Scott,
Pennsylvania Beta ☀️

Morgan Riley Sexton,
Kentucky Gamma

South Carolina Beta Chapter

Amy Lorenzen Southerland,
South Dakota Alpha

Amanda Strickland Stout,
Louisiana Beta

Nancy S. Strine, South Carolina Alpha

Lloyd and Norma Swart



Rena Rodeman Thorsen,

Maryland Beta

Chris Mills Verity, Texas Gamma ☀️

Virginia Delta Chapter

Virginia Theta Chapter

Laura Beth Holden Vogel,

Arkansas Alpha

Ashleigh Johnson Waits,

Georgia Alpha

Carol Schnabel Weber,

Wisconsin Alpha

Carol Crane Wells,

Alabama Gamma & John Wells

West Virginia Alpha Chapter

Diane Carlson White, Georgia Alpha

Ann Wear Wiley, Iowa Gamma ☀️

Sherri Zillgitt Wilson, Texas Alpha

Hallee Winnie, Michigan Gamma

Nancy Morsbach Winter,

Kansas Alpha

MacKenzie Winters, Alabama Beta

Leisa Winters

Julie Wisbrock & Chris Wisbrock

Wisconsin Delta Chapter

Marla Neelly Wulf, Kansas Beta

& Brent Wulf

100% OF CHAPTERS SUPPORT SHINE THROUGH

Every operating Pi Beta Phi chapter made the decision to support the **SHINE THROUGH** campaign.

Alabama Alpha
Alabama Beta
Alabama Gamma
Alberta Alpha
Arizona Alpha
Arizona Beta
Arizona Gamma

Arkansas Alpha
California Alpha
California Beta
California Delta
California Epsilon
California Eta
California Gamma
California Kappa
California Lambda
California Mu
California Nu
California Omicron
California Theta
California Xi
California Zeta
Colorado Alpha
Colorado Delta
Colorado Epsilon

Colorado Gamma
Connecticut Alpha
Connecticut Beta
Connecticut Gamma
D.C. Alpha
Delaware Alpha
Florida Alpha
Florida Beta
Florida Delta
Florida Epsilon
Florida Zeta
Georgia Alpha
Georgia Beta
Idaho Alpha
Illinois Alpha
Illinois Beta-Delta
Illinois Epsilon
Illinois Eta



Illinois Iota
Illinois Kappa
Illinois Theta
Illinois Zeta
Indiana Alpha
Indiana Beta
Indiana Delta
Indiana Epsilon
Indiana Gamma
Indiana Theta
Indiana Zeta
Iowa Beta
Iowa Gamma
Iowa Zeta
Kansas Alpha
Kansas Beta
Kentucky Alpha
Kentucky Beta

Louisiana Alpha
Louisiana Beta
Maine Alpha
Maryland Gamma
Massachusetts Gamma
Michigan Alpha
Michigan Beta
Michigan Gamma
Minnesota Alpha
Mississippi Alpha
Mississippi Beta
Mississippi Gamma
Missouri Alpha
Missouri Beta
Missouri Gamma
Montana Alpha
Nebraska Beta
Nebraska Gamma

Nevada Alpha
New Mexico Alpha
New York Delta
New York Epsilon
New York Eta
North Carolina Alpha
North Carolina Beta
North Carolina Delta
North Dakota Alpha
Ohio Alpha
Ohio Beta
Ohio Epsilon
Ohio Eta
Ohio Iota
Ohio Kappa
Ohio Lambda
Ohio Theta
Oklahoma Alpha
Oklahoma Beta
Ontario Alpha
Ontario Beta
Ontario Gamma
Oregon Alpha
Oregon Gamma
Pennsylvania Epsilon
Pennsylvania Eta
Pennsylvania Gamma
Pennsylvania Kappa
Pennsylvania Theta
Pennsylvania Zeta
South Carolina Alpha
South Carolina Beta
South Dakota Alpha
Tennessee Beta
Tennessee Delta
Tennessee Gamma
Texas Alpha
Texas Beta
Texas Delta
Texas Epsilon



Texas Eta
 Texas Gamma
 Texas Zeta
 Utah Alpha
 Vermont Beta
 Virginia Delta
 Virginia Epsilon
 Virginia Eta
 Virginia Gamma
 Virginia Iota
 Virginia Theta
 Virginia Zeta
 Washington Alpha
 Washington Beta
 Washington Gamma
 West Virginia Alpha
 Wisconsin Alpha
 Wisconsin Delta

ALUMNAE CLUB GIFTS

188 alumnae clubs made gifts supporting the **SHINE** THROUGH campaign. Those alumnae clubs listed in a bold typeface made gifts totaling \$25,000 or greater.

Abilene, TX Alumnae Club
 Adams County, PA Alumnae Club
 Albuquerque, NM Alumnae Club
 Alpharetta, GA Alumnae Club
 Amarillo, TX Alumnae Club
 Arlington Heights, IL Alumnae Club
 Arrowhead-West Phoenix, AZ Alumnae Club
 Atlanta, GA Alumnae Club
 Augusta, GA Alumnae Club
 Aurora, CO Alumnae Club
 Bakersfield, CA Alumnae Club

Baltimore, MD Alumnae Club
 Bartlesville, OK Alumnae Club
 Baton Rouge, LA Alumnae Club
 Bay Area, TX Alumnae Club
 Bellevue-Eastside, WA Alumnae Club
 Birmingham, AL Alumnae Club
 Bloomfield Hills, MI Alumnae Club
 Bloomington, IN Alumnae Club
 Bloomington-Normal, IL Alumnae Club
 Boca Raton, FL Alumnae Club
 Boise, ID Alumnae Club
 Bostonian, MA Alumnae Club
 Brazos Valley, TX Alumnae Club
 Brevard County, FL Alumnae Club
 Broward County, FL Alumnae Club
 Calgary, AB Alumnae Club
 Cape Cod, MA Alumnae Club
 Cedar Rapids, IA Alumnae Club
 Central Orange County, CA Alumnae Club
 Charlotte, NC Alumnae Club
 Chattanooga, TN Alumnae Club
 Chesapeake, MD Alumnae Club
 Cheyenne, WY Alumnae Club
 Chicago Windy City, IL Alumnae Club
 Cincinnati, OH Alumnae Club
 Clearwater, FL Alumnae Club
 Cleveland East, OH Alumnae Club
 Cleveland West, OH Alumnae Club
 Colorado Rocky Mountain Alumnae Club
 Colorado Springs, CO Alumnae Club
 Columbia, MO Alumnae Club
 Columbia, SC Alumnae Club
 Conejo Valley, CA Alumnae Club
 Conroe-The Woodlands, TX Alumnae Club
 Contra Costa, CA Alumnae Club
 Conway, AR Alumnae Club

Corpus Christi, TX Alumnae Club
 Corvallis, OR Alumnae Club
 Cypress Creek-NW Houston, TX Alumnae Club
Dallas, TX Alumnae Club
 Dayton, OH Alumnae Club
 DeLand, FL Alumnae Club
 Denver, CO Alumnae Club
 Des Moines, IA Alumnae Club
 Duncan, OK Alumnae Club
 Edmond, OK Alumnae Club
 Edmonton, AB Alumnae Club
 Fort Collins, CO Alumnae Club
 Fort Myers Area, FL Alumnae Club
 Fort Smith, AR Alumnae Club
 Fort Worth, TX Alumnae Club
 Fox River Valley, IL Alumnae Club
 Galesburg, IL Alumnae Club
 Glen Ellyn-Wheaton, IL Alumnae Club
 Glendale-La Canada, CA Alumnae Club
 Grand Junction, CO Alumnae Club
Greater Kansas City Alumnae Club
 Greater Orlando Area, FL Alumnae Club
 Greenville, SC Alumnae Club
 Harrisburg-Carlisle, PA Alumnae Club
 Hartford, CT Alumnae Club
 Highlands Ranch, CO Alumnae Club
 Hill Country, TX Alumnae Club
 Hilton Head Island, SC Alumnae Club
 Honolulu, HI Alumnae Club
 Hot Springs, AR Alumnae Club
Houston, TX Alumnae Club
 Indian River County, FL Alumnae Club

Indianapolis, IN Alumnae Club
 Indianola, IA Alumnae Club
 Inland Empire, CA Alumnae Club
 Jackson Metro, MS Alumnae Club
 Jefferson County, CO Alumnae Club
 Katy-West Houston, TX
 Alumnae Club
 Knoxville, TN Alumnae Club
 L.A.-Santa Monica, CA
 Alumnae Club
 La Jolla, CA Alumnae Club
 Lafayette, LA Alumnae Club
 Lake County, IL Alumnae Club
 Lake Oswego-Dunthorpe, OR
 Alumnae Club
 Lake Shore, IL Alumnae Club
 Las Vegas, NV Alumnae Club
 Lawrence, KS Alumnae Club
 Lexington, KY Alumnae Club
 Little Rock, AR Alumnae Club
 Long Beach, CA Alumnae Club
 Long Island-Nassau/Suffolk, NY
 Alumnae Club
 Louisiana Northshore
 Alumnae Club
 Louisville, KY Alumnae Club
 Lowcountry, SC Alumnae Club
 Lubbock, TX Alumnae Club
 Lufkin, TX Alumnae Club
 Madison, WI Alumnae Club
 Manchester Area, CT
 Alumnae Club
 Marin County, CA Alumnae Club
 Maryland-DC Suburban
 Alumnae Club
 McKinney Area, TX Alumnae Club
 Memphis, TN Alumnae Club
 Midland, TX Alumnae Club
 Milwaukee, WI Alumnae Club
 Minneapolis, MN Alumnae Club

Mississippi Gulf Coast Alumnae Club
 Monmouth, IL Alumnae Club
 Montgomery, AL Alumnae Club
 Mt. Pleasant, IA Alumnae Club
 Muncie, IN Alumnae Club
 Naperville Area, IL Alumnae Club
 Naples, FL Alumnae Club
Nashville, TN Alumnae Club
 Nations Capital-DC Alumnae Club
 New Haven, CT Alumnae Club
 New Orleans, LA Alumnae Club
 North Mississippi, MS
 Alumnae Club
 North San Diego, CA
 Alumnae Club
 Northeast Arkansas Alumnae Club
 Northern New Jersey Alumnae Club
 Northern Virginia Alumnae Club
 Northwest Arkansas Alumnae Club
 NY City-Manhattan, NY
 Alumnae Club
Oklahoma City, OK Alumnae Club
 Olympia, WA Alumnae Club
 Omaha, NE Alumnae Club
 Palm Springs-Desert Cities, CA
 Alumnae Club
 Palo Alto, CA Alumnae Club
 Pasadena, CA Alumnae Club
 Pensacola, FL Alumnae Club
 Peoria, IL Alumnae Club
 Philadelphia-Main Line, PA
 Alumnae Club
 Phoenix, AZ Alumnae Club
 Piedmont Area, NC Alumnae Club
 Pioneer Valley, MA Alumnae Club
 Portland, OR Alumnae Club
 Pueblo, CO Alumnae Club
 Red River Valley Alumnae Club
 Reno, NV Alumnae Club
 Richardson-Plano, TX Alumnae Club

Richmond Area, KY Alumnae Club
 Richmond, VA Alumnae Club
 Rochester, NY Alumnae Club
 Roswell, NM Alumnae Club
 Sacramento, CA Alumnae Club
 San Antonio, TX Alumnae Club
 San Diego, CA Alumnae Club
 San Francisco, CA Alumnae Club
 San Jose, CA Alumnae Club
 San Juan, CO Alumnae Club
 Sandhills, NC Alumnae Club
 Sarasota-Manatee, FL Alumnae Club
 Savannah, GA Alumnae Club
 Schenectady, NY Alumnae Club
 Seattle, WA Alumnae Club
 South Bay, CA Alumnae Club
 South Coast, CA Alumnae Club
 South Orange County, CA
 Alumnae Club
 Southern Fairfield County, CT
 Alumnae Club
 Southern Illinois Alumnae Club
 Southlake Area, TX Alumnae Club
 Spokane, WA Alumnae Club
 Springfield, MO Alumnae Club
 St. Louis, MO Alumnae Club
 St. Paul, MN Alumnae Club
 Stillwater, OK Alumnae Club
 Tampa, FL Alumnae Club
 Texarkana, AR-TX Alumnae Club
 Tidewater of Virginia Alumnae Club
 Toronto, ON Alumnae Club
 Traverse Bay Area, MI Alumnae Club
 Tucson, AZ Alumnae Club
 Tulsa, OK Alumnae Club
 Tyler, TX Alumnae Club
 Valley of the Moon, CA
 Alumnae Club
 Vancouver, BC Alumnae Club
 Ventura County, CA Alumnae Club



YOU DID IT ... AND WE NEED YOU TO CONTINUE!

When we launched the **SHINE THROUGH campaign, we asked every Pi Phi and Pi Phi friend to shine for our sisterhood. We called upon you to transform your unending loyalty into endless impact.**

We had clear goals: to cultivate Pi Beta Phi philanthropists, to increase the Foundation's capacity, to strengthen the partnership among the Foundation, Fraternity and Fraternity Housing Corporation and to raise \$28 million in outright and deferred gifts to sustain Pi Beta Phi for the future. And, you responded — in big ways!

With this campaign we set a record for Pi Beta Phi and for our fraternal friends, as we completed the largest campaign of any National Panhellenic Conference organization. However, it cannot mean our work stops.

Of the more than \$32 million you invested, 50% is comprised of deferred gifts and will be realized in the future. Of the gifts received today, half were given to grow our endowments — and while endowments have impact into perpetuity, they present only a portion of their worth for current needs. Completing a \$32 million campaign does not mean that all of today's needs are met!

Our sisterhood deserves our constant and continued care. Don't let this campaign be the end of your financial investment in Pi Phi. **To continue our success, every sister, every gift, every year is important.**

We have seen amazing things happen over our many years in Pi Phi — but this campaign is at the top of the list. We are in awe imagining all the opportunities you've created... Thank you for your gifts to our dear Pi Beta Phi!

Thank you and Ring Ching!



Sarah "Sis" Mullis,
South Carolina Alpha
Honorary Campaign Chairman



Carol Inge Warren,
North Carolina Beta
Honorary Campaign Chairman



50%

**DEFERRED
GIFTS**

COMMITTED
TO OUR FUTURE!

25%

CASH GIFTS
GIFTS WE CAN PUT TO
WORK NOW!

25%

**ENDOWMENT
GIFTS**

TO SUPPORT OUR
LONG-TERM SUCCESS!

HALF

OF THESE GIFTS

support Pi Phi's
greatest needs and
half are restricted
to support specific
programs.

The success of the **SHINE THROUGH** campaign strengthens our ability to sustain Pi Beta Phi into our next 150 years. Your continued support will ensure Pi Phi has the resources to meet today's needs.

CAMPAIGN CABINET



Jan Kincaid Clifford,
Indiana Delta,
Chairman



Ana Mancebo Miller,
Texas Beta



Kathy Swinea Nevill,
Tennessee Gamma



Kim O'Brien,
Ohio Zeta



Sally Minning Shoemaker,
Arizona Beta



Mary Loy Tatum,
Oklahoma Beta



Sarah "Sis" Mullis,
South Carolina Alpha,
Honorary Chairman



Carol Inge Warren,
North Carolina Beta,
Honorary Chairman

Barbara McReynolds LaMaster, Kentucky Beta, served on the Campaign Cabinet through October 2017.

PI BETA PHI FOUNDATION BOARD OF TRUSTEES

CURRENT TRUSTEES

Kate Blatherwick Pickert, Kansas Alpha, President

Janice Worthington Lisko, Oklahoma Beta,
Vice President Finance

Kathy Wager Sprague, Alabama Gamma,
Vice President Development

Gina Garrison Jones, Nebraska Beta, Secretary

Terre McFillen Hall, Ohio Alpha

Jennifer Hazelton, Virginia Eta

Mary Jane Buchele Johnson, Illinois Eta

Leslie Magnus, New Jersey Alpha

Cindy Rice Svec, Kansas Beta

Marla Neelly Wulf, Kansas Beta, Ex Officio,
Fraternity Grand President

Brenda Balkunas Wirth, Wisconsin Alpha, Ex Officio,
Fraternity Housing Corporation President

Ann Dudgeon Phy, Texas Alpha,
Foundation President Emerita

FORMER TRUSTEES SERVING DURING THE CAMPAIGN

Beth Seidelhuber Sordi, California Kappa, Past President

Vivian Long Shah, New York Eta

Mary Rakow Tanner, Maryland Beta

Rena Rodeman Thorsen, Maryland Beta

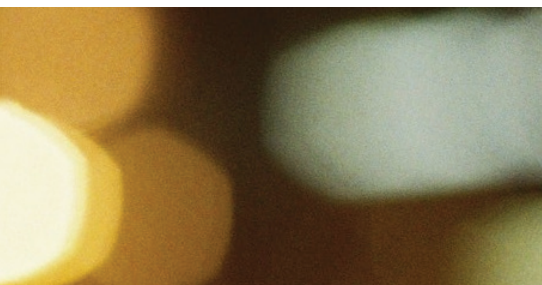
Beth Torres, Illinois Zeta

Paula Pace Shepherd, Texas Epsilon, Ex Officio,
Past Fraternity Grand President

Lisa Gamel Scott, Colorado Alpha,
Ex Officio, Past Fraternity Housing
Corporation President

PI BETA PHI FOUNDATION EXECUTIVE DIRECTOR

Hallee Winnie, Michigan Gamma



Pi Beta Phi Foundation is registered with the IRS as a 501(c)3 organization. Gifts to the Foundation are tax-deductible to the extent allowable by law. Sample deferred gift language, provided for your convenience: "I give, devise and bequeath (percent of the rest, residue, and remainder) or (specific dollar amount) to Pi Beta Phi Foundation, a Missouri education, charitable corporation, to be used for (general purposes for name of fund)."

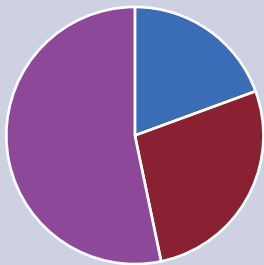
Speak with a member of the Pi Beta Phi Foundation staff by calling (636) 256-1357. To make a gift today, visit pibetaphifoundation.org/givenow.

2018-2019 ANNUAL REPORT HIGHLIGHTS

While this publication celebrates the success of the **SHINE THROUGH** campaign, your Foundation also is pleased to use the following pages to highlight the impact you have made possible for the last fiscal year, July 1, 2018 – June 30, 2019*. The statistics on these pages represent the many lives touched because of your dedication to our sisterhood. Your generosity truly makes an impact in the lives of our sisters and communities. Thank you for your support and for helping to ensure the future of Pi Beta Phi!

TOTAL ASSETS UNDER MANAGEMENT

\$24,834,482



Undesignated	\$4,819,687
Board Designated	\$6,785,243
Donor Restricted	\$13,229,552

TOTAL ANNUAL REVENUE

\$5,005,425



Without Donor Designations	\$1,678,929
With Donor Restrictions	\$3,326,496

TOTAL ANNUAL EXPENSES

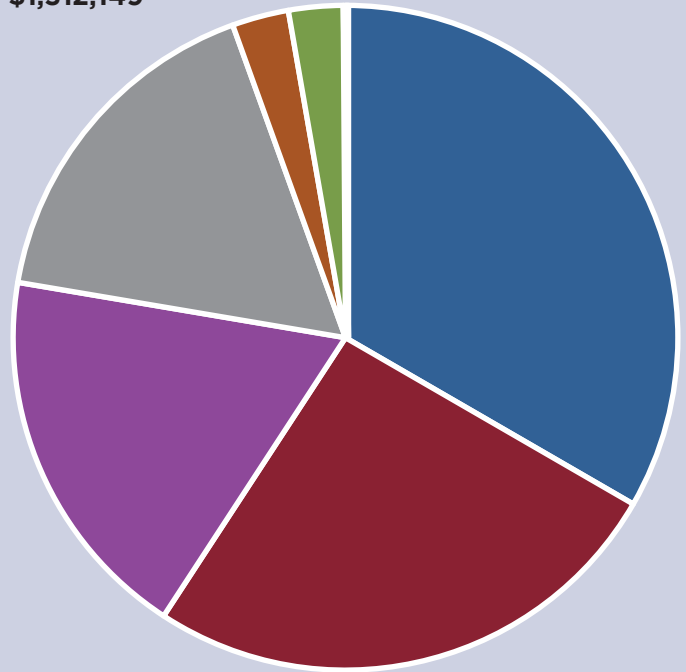
\$1,711,142



Salaries & Benefits	\$816,711
Events, Workshops	\$227,257
Printing	\$139,270
Travel	\$110,653
All Other Expenses	\$417,251

PROGRAM SERVICES/GRANTS

\$1,512,149



Leadership	\$504,200 [^]
Literacy*	\$391,178
Housing*	\$279,033
Scholarships*	\$254,408
Heritage - Holt House*	\$40,000
Emma Harper Turner Fund*	\$41,650
Miscellaneous**	\$1,680

[^] 77% from undesignated funds and 23% from donor restricted funds.

* 100% from donor restricted funds.

** 100% from undesignated funds.

+Fiscal reports are issued based on preliminary financial information.



BECAUSE OF YOUR SUPPORT...

\$1,512,149

INVESTED IN SCHOLARSHIPS, LEADERSHIP, EMERGENCY GRANTS,
LITERACY, HERITAGE AND HOUSING.

5,230

FOUNDATION
DONORS



389

EVELYN PETERS
KYLE SOCIETY
MEMBERS

\$41,650

FOR SISTERS IN NEED
THROUGH THE
EMMA HARPER TURNER
FUND



179,910

BOOKS FOR CHILDREN THROUGH
READ > LEAD > ACHIEVE®



20,491

COLLEGIANS SUPPORTED
THROUGH LEADERSHIP
DEVELOPMENT

\$132,366

LOCAL IMPACT GRANTS
MADE POSSIBLE BY CLUBS &
CHAPTERS



122

SCHOLARSHIPS AWARDED
TO COLLEGIANS AND
ALUMNAE



\$279,033

FOR QUALIFIED
CHAPTER HOUSING
PROGRAMS

Visit pibetaphifoundation.org/FY19highlights to view the following donor listings:

Annual Giving Societies

Recognizing members, alumnae clubs, chapters, friends and parents who gave to the Foundation from July 1, 2018 – June 30, 2019.

Lifetime Giving Societies

Honoring sisters and friends who have contributed \$1,867 or more during their lifetime as of June 30, 2019.

Marianne Reid Wild Society

Honoring sisters and friends who have made planned gifts to Pi Beta Phi by naming our Foundation as a beneficiary of their estate.

Evelyn Peters Kyle Society

Evelyn Peters Kyle Society members make cumulative annual gifts to Pi Beta Phi Foundation of \$1,000 or more. These loyal donors' annual commitment helps sustain the important work of our Foundation. *Pages 38 to 43 list Evelyn Peters Kyle Society members for the 2018-2019 fiscal year.*

EVELYN PETERS KYLE SOCIETY

Pi Beta Phi wishes to recognize the following donors who have made gifts of \$1,000 or more for the last fiscal year, July 1, 2018 – June 30, 2019. With their contributions, these donors prepare members to lead, give access to education, promote a lifelong love of reading, support sisters in need, advance collegiate housing and so much more.

Pamela Seneff Abadie
Arkansas Alpha

Sharon Abeyta-Levey
New Mexico Beta

Dee Danford Acuff
Missouri Alpha

Barbara Beardmore Adams*
Texas Alpha

Jill Klabzuba Ahrens
Washington Gamma

Maggie Strum Allesee
Florida Beta

Marie Baldazo Andreasen
California Eta

**The Family of Joanie
MaGirl Arnold***
Texas Beta

Sissy Phillips Austin
Oklahoma Alpha

Kay Cross Baker
Indiana Zeta

Peggy Batson Ballard
Georgia Alpha

Amy Richter Bankhead
Louisiana Alpha

Tanya Phillips Barnes
Arkansas Alpha

Patti Root Bash
Indiana Beta

Betty Hogan Bechtel
California Beta

Margaret Paterson Becker
Minnesota Alpha

Fran DeSimone Becque
New York Alpha

Janie Mayes Beeler
Texas Alpha

Elizabeth Bennett
Oklahoma Beta

Maja Tanaka Berge
Oregon Alpha

Maureen Day Bernard
Oregon Alpha

Oriana Rebecca Bertucci
Ontario Gamma

Jennifer Lauer Bevington
Illinois Alpha

Diane M. Bielman
California Eta

Barbara Anderson Blake
California Delta

Barbie Ann Blake
California Gamma

Caroline Elizabeth Blakey
Oklahoma Alpha

Carolyn Eberly Blaney
West Virginia Alpha

Anne Taylor Blatherwick
Kansas Alpha

Nell Blatherwick
California Gamma

Jeanne Krouse Bliss
Illinois Theta

Dody Intveld Boat
Iowa Gamma

**Demory Schwarzbauer
Boeneke**
Florida Beta

Mary Lou Iglehart Bookhout
Texas Beta

Laura Smith Borsch
Arizona Alpha

Cynthia Arnold Bowen
Kentucky Beta

Jan Ward Bowmer
Oklahoma Alpha

Bobbi Boyd Bragan
West Virginia Gamma

Ann Warmack Brookshire
Texas Beta

Sally Hewell Brown
Texas Delta

Susan Bruch
Michigan Alpha

Kara Damm Bryan
Iowa Zeta

Mary Ansley Buffington
Louisiana Beta

Laura Isabel Bushnell
California Alpha

Stacey Ford Butterfield
Oklahoma Beta

Susan Butterfly-Ebert
Arizona Alpha

Donna Lynn Butterworth
Virginia Eta

Carol M. Calkins
Louisiana Beta

Patricia Rose Carlton
Arkansas Alpha

Emily Martin Carney
Tennessee Beta

Julie Carney
Texas Beta

Lou Ann Montgomery Carter

Oklahoma Alpha

Kellee A. Casebeer

Oregon Gamma

Karen Shelton Chevalier

California Delta

Philip Cianciotto

Peggy Haberstroh Cifrino

West Virginia Alpha

Alicia Harris Clark

Texas Delta

Jordan Clark

Alabama Beta

Lyn Arnot Clark

Texas Alpha

Trudy Hartzell Clark

Maryland Beta

Maureen O'Sullivan Clayton

Georgia Alpha

Jan Kincaid Clifford

Indiana Delta

Misti Pollard Coker

Arkansas Alpha

Mimi Campbell Cole

Texas Alpha

Karen Kennedy Compton

Arkansas Alpha

Anne Smith Conkin

Alabama Beta

Charleen Meyer Copeland

Arkansas Beta

Ashley Holmes Corley

Tennessee Beta

Jennifer Sheffield Crain

Arkansas Alpha

Ann Tollefson Crampton

Kansas Beta

Angie Pinion Crawford

Mississippi Beta

Medie Rood Crockett

Georgia Alpha

Samantha Crosby

Elizabeth Yarbrough Cross

Arkansas Alpha

Terry Zoller Cross

Arizona Beta

Betty Small Crow

Oklahoma Beta

Sally Grayson Cullum

Arizona Beta

Janet Pierce Davis

Tennessee Gamma

Schabahn Straughan Day

Oregon Beta

Katie Rice Dimitrova

Arkansas Alpha

Kathy Kontor Dougherty

Texas Epsilon

Joan Todd Duncan

Georgia Alpha

Joanne Flowers Duncan

South Carolina Alpha

Kim Barger Durand

Oregon Alpha

John S. Durmon, D.D.S.

Debbie Walker Duszak

West Virginia Alpha

Kim Knight Dutton

Arkansas Alpha

Natalie Wilkins Dyenson

Iowa Zeta

MaryBeth Rhyne Dykes

Alabama Gamma

Shawn Eagleburger &

Chase Sechrist

Camille Thornton Easley

Arkansas Alpha

Nan Ellen Dickinson East

Arkansas Alpha

Martha Bowman Ebeling*

Ohio Delta

Julia Buckingham Edelmann

New Mexico Alpha

Michele Wilding Eichermueller

Oregon Delta

Emory McGinnis Eison

Mississippi Beta

Jenny Arnold Elkins

Texas Alpha

Ann Nicolay Erickson

Kansas Beta

Gayle Etienne

California Delta

Judy Ogden Fabian

South Dakota Alpha

Suzette Thompson Farrar

Colorado Delta

Ellen Wintroub Feigal

California Eta

Joan Groth Fenstermaker

Illinois Zeta

Remy Aileen Makiko Fisher

New Jersey Alpha

Mary Baker Flesher

Oklahoma Alpha

JoAnn Young Ford

Florida Delta

Frances Shields Foster

Texas Beta

Melissa Phillips Fritz

South Carolina Beta

Karin Daniel Frye

Alabama Gamma

Elisabeth Mayer Garcia

Nevada Alpha

Annette Pearson Gean

Arkansas Alpha

Barbara Gabriel George

Oklahoma Beta

Jane McNeill George

Ohio Alpha

Candi Parks Gershuni

Georgia Alpha

Carly Miller Giesbrecht

Alberta Alpha

Amy Shuart Gingrich

Virginia Zeta

Kelley Golden

Tennessee Gamma

Pamela Schumacher

Grading

Arizona Alpha

William K. Greenhaw

Janet Wickham Gregory

Michigan Beta

Jensey Fulbright Hale

Arkansas Alpha

Mary Ellen Beneke Hale

Indiana Gamma

Anne Paule Hall

Iowa Gamma

Terre McFillen Hall

Ohio Alpha

Pamela Williams Hallin

Arkansas Alpha

Mary Mead Hamill

North Carolina Beta

Katherine Stasiak Hankins

Mississippi Beta

Julie Boring Harrell

Tennessee Beta

Amne Harrington

Florida Alpha

Dana Hart

Ohio Eta

Margaret Steele Harvey

New York Alpha

Misty McIlroy Hawkins

Arkansas Alpha

Jennifer Windell Hazelton

Virginia Eta

Alison Veit Heafitz

Illinois Zeta

Ann Douglas Henagan

Alabama Beta

Jane Bell Henderson

Arkansas Alpha

Anne Busch Hills

Arizona Alpha

Katey Newell Hobbs

Missouri Alpha

Jacque Nelson Holloway

Iowa Zeta

Mary Morns Holman

Arizona Alpha

Mary Katharyn Howell Hope

Mississippi Beta

Greer Horne

Virginia Zeta

Mary Ann Behlen Hruska

Nebraska Beta

Betty Staggs Huckabay

Oklahoma Alpha

Bimi Lane Huebner

New Mexico Beta

Brenda Foster Huffman

Texas Epsilon

Bunny A. Hultman

Michigan Gamma

Leah Ann Hurley

Mississippi Beta

Sharlotte Jeffcoat Hyde

Texas Gamma

Linda Noel Ibsen

Colorado Beta

Audrey Sullivan Jacob

Michigan Beta

Sandra McCracken Jacobsen

Washington Alpha

Susan Parry Jacques

Oklahoma Beta

Lesley Whitehead Jagers

Kansas Beta

Carla Gaither Jeffrey

Oklahoma Beta

Sharon Jett

Texas Delta

Kirstin Swindler Johnson

Arkansas Alpha

Mary Jane Buchele Johnson

Illinois Eta

Melissa Edmunds Johnson

Wisconsin Alpha

Jacque Bankston Johnston

Alabama Gamma

Gina Garrison Jones

Nebraska Beta

Madalyn Marchman Jones

Arkansas Alpha

Nancy Barclay Jones

Missouri Alpha

Susan Tennant Kartzke

Arkansas Alpha

Mary Wingard Keathley

Alabama Beta

Amy Bader Keirle

Georgia Alpha

Rainey Peuse Kellogg

Montana Alpha

Heidi Dake Keogh

Colorado Alpha

Charline Sage Ketcherside*

New Mexico Alpha

Caitlin Pierce Kissee

Missouri Gamma

Kathi Caldwell Kleinman

Arizona Alpha

Vicki Borman Knight

Arkansas Alpha

Twyla Willey Kulp

Virginia Gamma

Christine Anderson Kurtz

Ohio Delta

Susan Crane Kyle

Indiana Beta

Whittnee Cox La Chapelle

Washington Gamma

Susan McFerron Laird

New Mexico Beta

Barbara McReynolds LaMaster

Kentucky Beta

Chantel Hagner Lanier

Florida Epsilon

Ashley Scott Larkin

Louisiana Alpha

Brenda Laroche

Arkansas Alpha

Nancy Doerner Latta

Michigan Gamma

Nicoletta Polychron Lawson

Arkansas Alpha

Cynthia L. Leaphart, MD, MBA

South Carolina Beta

**Susan Heather Henricks
Lenkin**

Arizona Alpha

Carolyn Pavletich Lesh

Texas Delta

Margo Wilton Lesser

California Gamma

Ann Rector Lewis

Texas Alpha

Julie Johnson Lewis

Oklahoma Beta

Carolyn Chappell Light

Texas Beta

Diane Malloy Lighthall

Colorado Beta

Erin Palla Lindsey

California Kappa

Janice Worthington Lisko

Oklahoma Beta

Kitty Sue Little

Oklahoma Alpha

Lourdes Maria Llopiz

Florida Epsilon

Betty Blades Lofton

Indiana Gamma

Susan E. Lombardi

Nevada Alpha

Jill Whitney Long

Oklahoma Beta

Julie Avins Long

California Epsilon

Margy Liebers Lovelette

Pennsylvania Eta

Luana Davis Lovenguth

West Virginia Alpha

Leisa Ebeling Lowrey

Ohio Eta

Nell Williams Luce

South Dakota Alpha

Shannon Kimbrough Luce

New Mexico Alpha

Gayle Gillum Macdiarmid

Louisiana Beta

Sue Ann Magness

Oklahoma Alpha

Fredna Barton Mahaffey

Texas Beta

Rae Wohlhueter Maier

Kentucky Beta

Leslie Atkinson Marshall

Connecticut Alpha

Marshall Foundation

Dorothy Will Marston

Iowa Gamma

Toni Martinovich

California Eta

Debby Gibson Marvel

Arizona Alpha

Lauren Tatum Matocha

Texas Delta

Sherry and Randy McCaslin

Chantel McCollum

Arkansas Alpha

Barbara Witzeman McCoy

Illinois Eta

Ann Weaver McDonald

Texas Beta

Mr. Robert McDonough

Ruth Henderson McIntyre

South Carolina Alpha

Mary Grable McLeod

Illinois Alpha

Mary Fenn McMillan

Manitoba Alpha

Elizabeth Trice Meacham

Arkansas Alpha

Mary Jane Keller Meier

Michigan Alpha

Kathleen Ann Meriano

New York Eta

Melanie Beck Metzger

Texas Epsilon

Ana Mancebo Miller

Texas Beta

Heather Wilson Miller

New Mexico Beta

Kelli Nicholson Miller

Arkansas Alpha

Lisa Hornibrook Miller

Arkansas Alpha

Alison Hennig Moore*

Florida Gamma

Margy Harm Moorhead

Indiana Gamma

Doreen Lynn Mueller

Georgia Alpha

Sarah (Sis) Mullis

South Carolina Alpha

Jo Anne Craver Murdock

Texas Gamma

Luke Musfeldt

Gail Webb Natale

Texas Beta

Kathy Swinea Nevill

Tennessee Gamma

Linda Ward O'Hara

Kansas Alpha

Brenda Martini O'Loughlin

Colorado Alpha

Julie Ternes Oakhill

Arkansas Alpha

Kim OBrien

Ohio Zeta

Marion Swanson Oster

California Zeta

Carol Christensen Oukrop

North Dakota Alpha

Barbie Edwards Paige

Oklahoma Beta

Anne Oehler Palmer

Ohio Epsilon

Ann Hall Patten

Missouri Alpha

Cheri Raber Patterson

Illinois Theta

Lynn Ridge Peacher

Oklahoma Beta

Barbara Hall Peck

Arizona Alpha

Audrey Miller Pennings

Arkansas Alpha

Kelly Zudycki Perry

Illinois Zeta

Christina Nguyen Pham

California Eta

Ann Dudgeon Phy

Texas Alpha

Kate Blatherwick Pickert

Kansas Alpha

Lauren Pierce

Bobbie Bliss Pittman

Wisconsin Beta

Jenn Plagman-Galvin

Iowa Gamma

Jan Turner Polk

Oklahoma Beta

Nancy Fogle Pollard

Arkansas Beta

Ashley Smith Potter

Georgia Alpha

Lisa Edwards Powell

Arkansas Alpha

Lura Jane Powell

Maryland Beta

Wendy Labreche Pratt

Massachusetts Beta

Patty Shelton Pyle

Arkansas Alpha

Terri Anderson Quick

New York Epsilon

Shannon Rainosek-Hurley

New Mexico Alpha

Lynn Moll Rassieur

Louisiana Alpha

Eileen Norcross Rauschert

Illinois Zeta

Amanda Marie Reid

Michigan Alpha

Lisa Hughes Reid

Oklahoma Alpha

Winnie Coyne Reitnouer

California Zeta

Beth Stuckey Rice

Arkansas Alpha

Erin Monnig Rice

Iowa Gamma

Dee Rippetoe Richardson

Oklahoma Beta

Sara McIlhenny Ringle

New Mexico Alpha

Tina Lynn Rivard

Pennsylvania Theta

Suzanne Barrett Robert

Arizona Alpha

Cynthia Dean Robinson

Tennessee Beta

Robin McPherson Rohrback

Florida Beta

Alan Rolph

Lisa Rede Roman

New Mexico Beta

Ann Bodenhamer Rosso

Arkansas Alpha

Liz Hoover Rotan

Texas Beta

Alisa Brooks Rudlang

Minnesota Alpha

Jane Landreth Russell

Arizona Alpha

Vanessa Brown Russell

Arkansas Alpha

Sandra D. Rutherford

Arizona Alpha

Gioia Mariani Ryan

Arizona Beta

Amanda Rychtanek

Indiana Theta

Patience Rood Sanford

Arizona Alpha

Celia Ann Mills Saterbak

Alabama Alpha

Sharon Edwards Schachter

South Carolina Alpha

Beverly Cregg Schafer

Oklahoma Beta

Amy Sonner Schemenauer

Missouri Alpha

Kathleen Schierman

Jill Lanman Schneider

Alabama Gamma

Kelli Schrang

Jean Wirths Scott

Pennsylvania Beta

Lisa Gamel Scott

Colorado Alpha

Betty Huff Seay

Oklahoma Alpha

Morgan Riley Sexton

Kentucky Gamma

Vivian Long Shah

New York Eta

Deborah Boyd Sharp

Arkansas Alpha

Phyllis M. Sharp

Illinois Theta

Ann Crigger Shaw

Arkansas Alpha

Sue White Shellabarger

Oklahoma Beta

Paula Pace Shepherd

Texas Epsilon

Betsy Beese Sheridan

Texas Gamma

Sarah Catherine Shoaf

North Carolina Gamma

Sally Minning Shoemaker

Arizona Beta

Jamie Shuster

North Carolina Alpha

April and Craig Shy

Peggy Bookhout Sisson

Oklahoma Alpha

Romy Skaper

Arizona Beta

Tia Hoppin Smith

Colorado Alpha

Dorothy Goodson Snowden

Tennessee Beta

Ellen Poole Solich

Mississippi Alpha

Bethany Johnson Soper

Ohio Kappa

Beth Seidelhuber Sordi

California Kappa

Amy Lorenzen Southerland

South Dakota Alpha

Lori Swart Sporer

Kansas Beta

Kathy Wager Sprague

Alabama Gamma

Susan Hansen Stannard

Kansas Beta

Betty West Stedman

Texas Alpha

Charlotte Smith Steele

Arkansas Alpha

Betsy Campbell Stone

Washington Gamma

Amanda Strickland Stout

Louisiana Beta

Nancy S. Strine

South Carolina Alpha

Maurita Estes Stueck

Missouri Beta

Lela Bennett Sullivan

Oklahoma Beta

Margaret A. Sundberg

Washington Alpha

Leah Beth Faulk Sutton

Arkansas Alpha

Cindy Rice Svec

Kansas Beta

Mary Rakow Tanner

Maryland Beta

Emily Russell Tarr

Texas Beta

Mary Loy Tatum

Oklahoma Beta

**Joanne Church Taylor-
Johnson**

California Beta

Sally Rahe Thomas

Oklahoma Alpha

Melanie Merrill Thompson

Kansas Beta

Cosette Fidler Thoms

Wyoming Alpha

Karen Sulley Thorn

Nebraska Beta

Rena Rodeman Thorsen

Maryland Beta

Mary Alice Classen Tinari

North Carolina Beta

Patty Neal Todderud

Indiana Delta

Kim Kimmy Tomczak

Washington Alpha

Beth Torres

Illinois Zeta

Anita Tracy

Maryland Beta

Carol Turbeville Trittschuh

Indiana Gamma

Leslie Bryles Truemper

Arkansas Alpha

Jean Nees Tulin

Illinois Eta

Pam Joy Turbeville

Arizona Alpha

Denise Pierce Turnbull

Illinois Alpha

Alissa Rose Turnipseed

D.C. Alpha

Angie Killian Underwood

Illinois Iota

Valerie Jean Uyeda

California Theta

Chris Mills Verity

Texas Gamma

Stephanie Adair Vickery

South Carolina Alpha

Laura Beth Holden Vogel

Arkansas Alpha

Judi Buck Wagner

Washington Alpha

Jennifer Scott Wahlen

Alabama Gamma

Ashleigh Johnson Waits

Georgia Alpha

Myra Gungoll Ward

Oklahoma Alpha

Nancy Halvorson Ward

California Epsilon

Veda Ward

Pennsylvania Beta

Carol Inge Warren

North Carolina Beta

Kristy Lynn Weber

Missouri Alpha

Gwendolyn Weiner

Arizona Alpha

Joanie Platt Welch

Washington Gamma

Carol Crane Wells

Alabama Gamma

Nelly Welsch

South Carolina Beta

Marty Reynolds White

Kansas Beta

Sally Sewell Wightman

Oklahoma Alpha

Alinda Hill Wikert

Texas Alpha

Ann Wear Wiley

Iowa Gamma

Natalie McCollum Wilks

Arkansas Alpha

Ruth Dunlap Will

Ohio Beta

Juli Holmes Willeman

Iowa Beta

**Elizabeth Montgomery
Wilson**

Texas Beta

Sherri Zillgitt Wilson

Texas Alpha

Hallee Winnie

Michigan Gamma

Julie & Chris Wisbrock

Victoria Stillman Withers

Arizona Alpha

Tally Smith Witmer

Ohio Zeta

Valera Hume Wolf*

Indiana Gamma

Marla Neelly Wulf

Kansas Beta

Linda Lake Young

Oklahoma Alpha

Janet Farrington Youngberg

New Mexico Alpha

Carolyn Thompson Zachritz

Oklahoma Alpha

Carolyn Dinner Zecca-Ferris

Arizona Alpha

Anonymous

Colorado Gamma

Anonymous

Wisconsin Gamma



Little could our Founders have known what the sisterhood they created would accomplish.

Inspired by a beautiful 150 years of Pi Beta Phi, we committed to sustaining Pi Phi forever. So, to every Pi Phi and Pi Phi friend who made a gift, to each sister who spread the word, to every member who proudly wears the wine and silver blue, simply to every Pi Beta Phi, congratulations. You have transformed unending loyalty — loyalty that knows no bounds — into endless impact.”

Celebratory toast offered by **SHINE THROUGH** Campaign Cabinet Chairman Jan Kincaid Clifford, Indiana Delta, at Convention 2019



FOUNDATION

pibetaphifoundation.org

1154 Town and Country Commons Drive | Town and Country, MO 63017