

PI BETA PHI OVERVIEW

This overview is a compilation of facts and explanations about Pi Beta Phi designed to be a summary for new officers, advisors and volunteers.



FRATERNITY FACTS & FIGURES

- **Initiated members since 1867:** more than 316,000
- **Living alumna members:** more than 225,000
- **Alumnae club organizations:** more than 280
- **Collegiate chapters:** 206 installed, 134 active and of these, 25 were chartered prior to 1900
- **Current collegiate members:** more than 20,000

FRATERNITY LEADERSHIP

GRAND COUNCIL

The Grand President and six Grand Vice Presidents uphold the Pi Beta Phi Constitution and Statutes by managing and supervising the affairs of the Fraternity. They select and appoint international officers and committees. They are responsible for granting and revoking charters of chapters and alumnae clubs and have the responsibility of holding chapters accountable. In addition to a full list of responsibilities outlined in the Constitution & Statutes, Grand Council performs other duties as directed by the convention body or in the best interest of the Fraternity.

Grand Council members are elected biennially at convention for two-year terms. A Grand Council officer may serve up to three terms in any one position and up to 10 years of total service. Every Grand Council officer must have served as a Director or Fraternity officer above the local level and must be knowledgeable about current Fraternity programs.

DIRECTORS

A series of international Directors are elected at convention to help lead the Fraternity, including Specialty Team Directors who provide support to alumnae clubs and chapters in their areas of expertise, and design and institute new initiatives contributing to the overall growth and welfare of the Fraternity.

Directors are elected biennially at convention for two-year terms. A Director may serve no more than three consecutive terms in any one office, nor a total of more than 10 consecutive years as a Director.

ALUMNAE ENGAGEMENT DIRECTORS

Alumnae Engagement Directors report to the Grand Vice President Alumnae and oversee alumnae clubs within defined regions to promote successful club operations and encourage overall alumnae engagement.

COLLEGIATE REGIONAL DIRECTORS

Collegiate Regional Directors report to the Grand Vice President Collegians and lead teams of Regional Specialists to oversee and support the operations of collegiate chapters within defined regions.

SPECIALISTS

Specialists are part of the Regional Team and are selected based on their unique skill sets or experiences to help lead the Fraternity. Regional Specialists are appointed to office, not elected, with the help of the Pi Beta Phi Leadership and Nominating Committee (LNC). For each region, six Regional Specialists provide guidance and support to chapters in the areas of Operations, Risk Management, Member Experience, Finance and Housing, Community Relations, Inclusion and Recruitment.

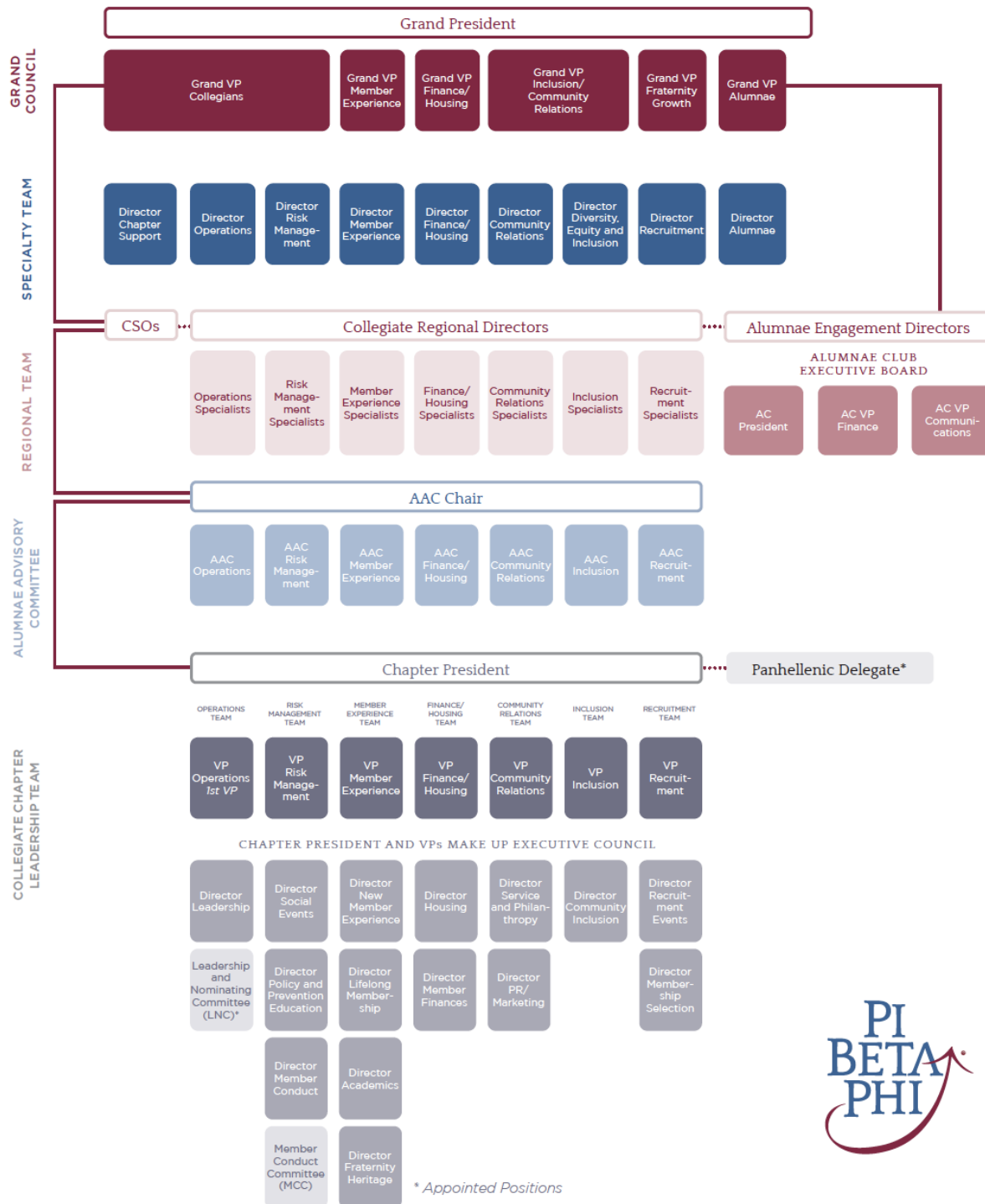
Specialists are slated by the Leadership and Nominating Committee and appointed by Grand Council in off-Convention years for two-year terms. A Specialist may serve no more than three consecutive terms in the same specialist position.

APPOINTED OFFICERS AND COMMITTEES

Appointed officers and committees are nominated by the LNC and are officially appointed by Grand Council and play a critical role in the Fraternity. These officers address specific needs of the Fraternity ranging from leadership to music, to ensuring the history and heritage of the Fraternity is well-documented, to representing the Fraternity within the National Panhellenic Conference.



PI BETA PHI ORGANIZATIONAL STRUCTURE



ALUMNAE ADVISORY COMMITTEE

The Alumnae Advisory Committee (AAC) is the local advisory board for each chapter. These alumnae volunteers offer guidance, support, professional knowledge, experience and continuity to the collegiate experience. AAC members work with counterparts on the Executive Council as mentors and advisors and interact with the chapter as a whole. In some cases, not all AAC positions are filled and one individual may take on more than one role. The duties of AAC members include, but are not limited to, the following:

- Meet monthly with the chapter's Executive Council and communicate with Vice President counterpart regularly.
- Provide general support, encouragement, continuity and advice.
- Attend Initiation, Pledging and other ceremonies when possible.
- Assist and support chapter programming, including officer training.
- Oversee and support the member accountability process.
- Sign off on reports and forms.
- Consider and act on requests for undergraduate alumna status.
- Consider and act on requests for "living-out" and assist with filling the house to capacity.
- Consider all chapter requests for dispensation and forward to Regional Specialists, if approved.
- Determine jointly with the Executive Council the eligibility of New Members for Initiation.
- Serve on the Chapter Membership Selection Committee and attend membership selection meetings.
- Appoint the Leadership and Nominating Committee jointly with the Executive Council.
- Approve jointly with the Executive Council a single slate of nominees for chapter officers as prepared by the Leadership and Nominating Committee.
- Approve jointly with the Executive Council all appointed officers and committees as recommended by the Leadership and Nominating Committee; and finally,
- Serve on the Chapter Budget Committee as the AAC Finance/ Housing Advisor or AAC Chairman.



GOVERNING DOCUMENTS

CONSTITUTION AND STATUTES

Pi Beta Phi Fraternity, its members, chapters and alumnae clubs are governed by the Pi Beta Phi Constitution and Statutes, often referred to as the “C&S.” The Constitution and Statutes may be amended only by a vote of the convention voting body and takes precedence over all other governing documents. First adopted in 1890, the Constitution designates the name, object, membership, organization, government, insignia and amendments. The Statutes are equally binding and establish the basic requirements for collegiate chapters. The Constitution and Statutes can be found in the members-only section of the Pi Beta Phi website in the [Resource Library](#). External requests for copies of the Constitution and Statutes must be approved by the Grand President. The Constitution and Statutes should never be copied or distributed without permission.

POLICY AND POSITION STATEMENTS

Pi Beta Phi’s Policy and Position Statements are the overarching policies for chapters and members. Each individual member is responsible for fully understanding and complying with these policies along with Pi Beta Phi’s Member Obligations. Specific event planning Policy and Position Statements guide collegiate chapters in their planning and management of chapter events. All external stakeholders such as parents, family members and campus partners are able to view all Policy and Position Statements on the public side of the Pi Phi website at pibetaphi.org/policies. There are seven overarching Policy and Position Statements including: Member Conduct, Alcohol and Drugs, Non-Discrimination, Anti-Hazing, Chapter Facility Safety and Visitation, Alumnae/Parent Involvement in Collegiate Recruitment and Parents’ Clubs.

CHAPTER BYLAWS

Each chapter has developed a set of bylaws which detail local chapter organization and policies. These bylaws may be more restrictive but not less so than the Constitution and Statutes. It’s important to remember the Constitution and Statutes take precedence over chapter bylaws. Bylaws must be reviewed annually by the Vice President Operations in collaboration with the Chapter Leadership Team. Revisions are first approved by the regional Operations Specialist, AAC and Executive Council, then voted upon by the chapter.



The regional Operations Specialist will also review a chapter's bylaws on an annual basis. Bylaws should be posted before voted upon and all members should have access to them. Sharing the bylaws varies based on the audience and need, therefore chapters should work with their regional Operations Specialist before sharing copies externally.

FOUNDATION

Since its formation in 1990, the aim of Pi Beta Phi Foundation has remained clear – to act as a strong financial support for the Fraternity and its members. A 501(c)(3) not-for-profit organization, the Foundation is committed to enriching lives of Pi Phis and their communities by funding programs in education, leadership and philanthropy. Pi Beta Phi Foundation is led by the Foundation Board of Trustees, staff based out of Pi Beta Phi Headquarters and supported by volunteers structured into focused committees. The Foundation's Mission Statement is "Pi Beta Phi Foundation enables Pi Beta Phi Fraternity to realize its vision and ensures the future of our sisterhood." Programs funded by Pi Beta Phi Foundation include, but are not limited to:

- Undergraduate scholarships, graduate fellowships and Alumnae Continuing Education (ACE) scholarships
- *Leading with Values*®, Critical Conversations®, Pi Beta Phi Online Learning Center
- Leadership Development Consultant (LDC) Program, Leadership Institute
- Emma Harper Turner Fund Emergency Assistance Grants
- Read > Lead > Achieve initiatives, including Champions are Readers® (CAR), Fraternity Day of Service Signature Events, FDS 500, Arrow in the Arctic and Local Impact Grants
- Holt House

To learn more about our Foundation, visit pibetaphifoundation.org.

FRATERNITY HOUSING CORPORATION

Pi Beta Phi Fraternity Housing Corporation (FHC) was founded in April 2008 to oversee housing on an international level and to help Chapter Housing Corporations (CHC) operate effectively and efficiently. The FHC Board consists of five members. FHC is staffed with full-time housing and finance experts at Headquarters in St. Louis, Missouri. FHC's goal is to strengthen, support and service our CHCs and FHC chapters. FHC oversees all CHCs and



volunteers work directly with FHC staff for housing assistance. FHC serves as a resource in areas including volunteer development, employee management, finance, safety issues, training, fundraising and more. The FHC Board and staff are consistently developing new tools and training to help CHCs more effectively fulfill their volunteer positions. The FHC website is housing.

CHAPTER HOUSE CORPORATIONS

CHCs own and maintain property for the use and benefit of the chapter, which often includes residential facilities. This can also include property, such as furniture, within a different type of facility, such as a suite or storage unit. A CHC Board, comprised of alumnae volunteers, manages all responsibilities of a CHC. In addition to leasing the property to the chapter based on a written annual agreement, the CHC employs the House Director and other employees necessary to operate the chapter facility and is represented on the Chapter Budget Committee by the CHC President or Treasurer. For some chapters, property is owned and maintained by Pi Beta Phi FHC instead of a CHC.

NATIONAL PANHELLENIC CONFERENCE

The National Panhellenic Conference (NPC) was established in 1902 to assist collegiate and alumnae chapters of the NPC member organizations in cooperating with colleges and universities and to foster interfraternal relationships. Today NPC is made up of 26 women's-only inter/national member organizations and is the world's largest umbrella organization specifically charged with advancing the sorority experience. Through its advocacy, NPC seeks to enlist nearly 5 million sorority women in its efforts to showcase the transformational power of the sorority experience.

NPC's Strategic Plan Priorities include:

- Champion the Sorority Experience
- Cultivate Strategic Growth of Panhellenic Communities
- Leverage the Collective Strength of Our Member Organizations



HEADQUARTERS OVERVIEW

The Fraternity is supported by Headquarters staff located in St. Louis, Missouri. More than 50 staff members based at Headquarters function as the service center of Pi Beta Phi. In addition to partnering with volunteers to conduct both the strategic and administrative work of the Fraternity, Headquarters also directs the financial affairs and manages much of the communication with alumnae, collegians and officers. Anyone may contact Headquarters with questions on anything from Fraternity dues to the member experience. Headquarters also houses Pi Beta Phi Fraternity Housing Corporation and Pi Beta Phi Foundation. Headquarters is open 8:00 a.m. to 5:00 p.m. CST, Monday through Friday.

BASICS OF MEMBERSHIP

Once a New Member is bid-matched to Pi Beta Phi during recruitment, the match is binding for one year. The New Member is not eligible to join any other NPC group during that time. Once a member has been initiated into Pi Beta Phi, she is ineligible to join another NPC group on any campus. All Pi Beta Phi members in good standing fall into one of three categories:

- New Members
- Initiated members
- Alumnae members

There are very specific actions that must take place to change a member from one status to another or to remove a member from the chapter roster. The status of New Members can change in two ways:

- They can become an initiated member OR
- Their pledge may be terminated by one of the following methods:
 - Breaking of a pledge by the New Member
 - Breaking of a pledge by the chapter OR
 - Expiration of their pledge after one calendar year

The status of initiated members can change in the following ways:

- The initiated member automatically becomes an alumna if:
 - They do not return to school as the result of:
 - Graduation
 - Transfers to another school
 - Withdraws from the university
- They are granted undergraduate alumna status via application or automatically as a 5th year senior

A membership may be terminated through one of two actions:

- Resignation by a financially current member OR
- Dismissal by the chapter or Fraternity (including financial dismissal)

Pi Beta Phi members cannot “deactivate” nor is there an “inactive” status. The only way members are removed from Fraternity membership is by resignation or dismissal.

RELATIONSHIP BETWEEN FRATERNITY AND COLLEGIATE MEMBERS

Pi Beta Phi is a private membership organization. The membership relationship is between the Fraternity and the individual member, not their parents or guardians, regardless of the collegian’s financial obligations. Anything related to a collegian’s membership status, financial status, housing status or their chapter experience cannot be shared with a parent/guardian without the member’s written permission. Pi Beta Phi Headquarters staff are available at (636) 256-0680 to answer or find answers to questions of parents or guardians regarding the organization.

FREQUENTLY USED ABBREVIATIONS

AAC	Alumnae Advisory Committee	GVPFH	Grand Vice President Finance/Housing
AC	Alumnae Club	GVPFG	Grand Vice President Fraternity Growth
ACP	Alumnae Club President	GVPI/CR	Grand Vice President Inclusion/Community Relations
ACT	Alumnae Club Treasurer	GVPME	Grand Vice President Member Experience
AED	Alumnae Engagement Director	HQ	Headquarters
AO	Assistance Officer	HD	House Director
AFP	Automatic Financial Probation	IS	Inclusion Specialist
CAR	Champions are Readers	LDC	Leadership Development Consultant
CE	Chapter Evaluation	LNC	Leadership Nominating Committee
CHC	Chapter House Corporation	MCC	Member Conduct Committee
CMSC	Chapter Membership Selection Committee	MES	Membership Experience Specialist
CP	Chapter President	MS	Membership Selection
CSO	Chapter Support Officer	NM	New Member
CPO	Chief Panhellenic Officer	NPC	National Panhellenic Conference
CRD	Collegiate Regional Director	OLC	Online Learning Center
CRS	Community Relations Specialist	OT	Officer Training
C&S	Constitution and Statutes	OS	Operations Specialist
DA	Director Alumnae	PH	Panhellenic
DCR	Director Community Relations	PPS	Policy and Position Statement
DDEI	Director Diversity, Equity and Inclusion	PO	Probation Officer
DFH	Director Finance/Housing	RIF	Recruitment Information Form
DME	Director Member Experience	RS	Recruitment Specialist
DO	Director Operations	RLDC	Resident Leadership
DR	Director Recruitment	RMS	Risk Management Specialist
DRM	Director Risk Management	RT	Regional Team
EC/Exec	Executive Council	SO	Supervision Officer



ED	Executive Director
FHS	Finance/Housing Specialist
FSA	Fraternity and Sorority Advisor
FH	Fraternity Heritage
FHC	Fraternity Housing Corporation
GC	Grand Council
GP	Grand President
GVPA	Grand Vice President Alumnae
GVPC	Grand Vice President Collegians

UAS	Undergraduate Alumna Status
VPCR	Vice President Community Relations
VPFH	Vice President Finance/Housing
VPI	Vice President Inclusion
VPME	Vice President Member Experience
VPO	Vice President Operations
VPR	Vice President Recruitment
VPRM	Vice President Risk Management